

FOR QUESTIONS, CALL THE  
Indiana Office  
REGION 56  
PHONE: (317) 852 - 3770  
EMAIL: reg56@econair.com

**PATENT NUMBERS**

AC-PSP (UNITED STATES) - US PATENT 7963830 B2.  
AC-PSP WALL (CANADA) - CA PATENT 2820509.  
AC-PSP ISLAND (CANADA) - CA PATENT 2520330.

**SPECIFICATION: CAPTRATE® GREASE-STOP® SOLID FILTER**

THE CAPTRATE GREASE-STOP SOLID FILTER IS A SINGLE-STAGE FILTER FEATURING A UNIQUE S-Baffle DESIGN IN CONJUNCTION WITH A SLOTTED REAR Baffle DESIGN, TO DELIVER EXCEPTIONAL FILTRATION EFFICIENCY.

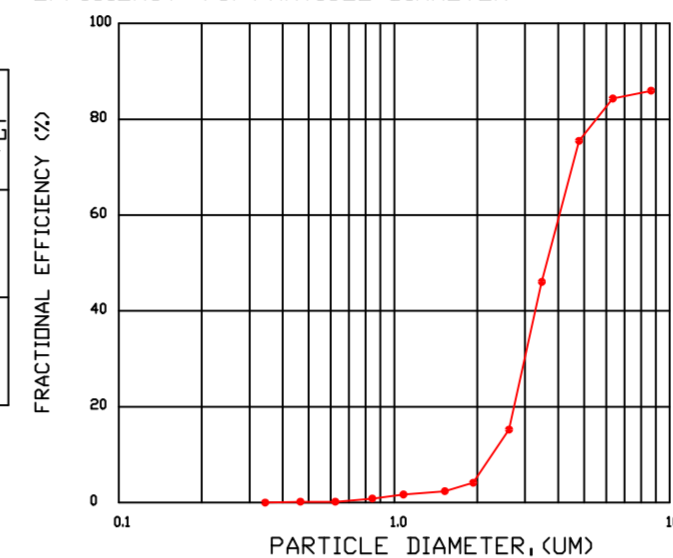
FILTER IS STAINLESS STEEL CONSTRUCTION, AND SIZED TO FIT INTO STANDARD 2-INCH DEEP HOOD CHANNEL(S).

UNITS SHALL INCLUDE STAINLESS STEEL HANDLES AND A FASTENING DEVICE TO SECURE THE TWO COMPONENTS WHEN ASSEMBLED.

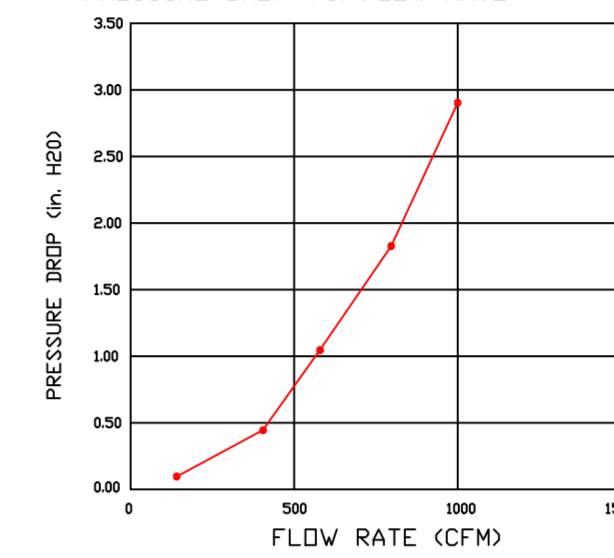
GREASE EXTRACTION EFFICIENCY PERFORMANCE SHALL REMOVE AT LEAST 75% OF GREASE PARTICLES FIVE MICRONS IN SIZE, AND 85% GREASE PARTICLES SEVEN MICRONS IN SIZE AND LARGER, WITH A CORRESPONDING PRESSURE DROP NOT TO EXCEED 1.0 INCHES OF WATER GAUGE.

THE CAPTRATE GREASE-STOP SOLID WAS TESTED TO ASTM STANDARD ASTM F2519-05, MANUFACTURER APPROVED FOR USE IN SOLID FUEL APPLICATIONS AS A SPARK ARRESTER.

EFFICIENCY VS. PARTICLE DIAMETER



PRESSURE DROP VS. FLOW RATE



CAPTRATE FILTERS ARE BUILT IN COMPLIANCE WITH:  
NFPA #96.  
NSF STANDARD #2.  
UL STANDARD #1046.  
INT. MECH. CODE (IMC).  
ULC-S649.



**HOOD INFORMATION - JOB#6838657**

HOOD NO	TAG	MODEL	MANUFACTURER	LENGTH	MAX COOKING TEMP	TYPE	APPLIANCE DUTY	DESIGN CFM/FT	TOTAL EXH CFM	EXHAUST PLENUM RISER(S)						TOTAL SUPPLY CFM	HOOD CONSTRUCTION	HOOD CONFIG		
										WIDTH	LENG	HEIGHT	DIA	CFM	VEL			SP	END TO END	RDW
1	1A	6024 EX-2-PSP-F	ECON-AIR	12' 0"	450 DEG	I	MEDIUM	225	2700			4'	16'	2700	1934	-1.344'	2160	430 SS WHERE EXPOSED	ALONE	ALONE
2	1B	6024 EX-2-PSP-F	ECON-AIR	12' 0"	450 DEG	I	MEDIUM	225	2700			4'	16'	2700	1934	-1.344'	2160	430 SS WHERE EXPOSED	ALONE	ALONE

**HOOD INFORMATION**

HOOD NO	TAG	FILTER(S)				LIGHT(S)				UTILITY CABINET(S)				FIRE SYSTEM PIPING	HOOD HANGING WEIGHT	
		TYPE	QTY	HEIGHT	LENGTH	EFFICIENCY @ 7 MICRONS	QTY	TYPE	WIRE GUARD	LOCATION	SIZE	FIRE SYSTEM	SIZE			ELECTRICAL
1	1A	CAPTRATE SOLID FILTER	9	16"	16"	85% SEE FILTER SPEC	4	L55 SERIES E26	NO	RIGHT	12"x60"x24"	TANK FS	4.0/4.0/4.0		YES	1207 LBS
2	1B	CAPTRATE SOLID FILTER	9	16"	16"	85% SEE FILTER SPEC	4	L55 SERIES E26	NO	LEFT	12"x60"x24"				YES	907 LBS

**HOOD OPTIONS**

HOOD NO	TAG	OPTION
1	1A	FIELD WRAPPER 18.00" HIGH FRONT, LEFT, RIGHT.
		BACKSPLASH 80.00" HIGH X 156.00" LONG 430 SS VERTICAL.
		BACKSPLASH 120.00" HIGH X 18.00" LONG 430 SS VERTICAL.
		BACKSPLASH 120.00" HIGH X 18.00" LONG 430 SS VERTICAL.
		RISER SENSOR INSTALL 6IN PLEN.
		RIGHT VERTICAL END PANEL 27" TOP WIDTH, 21" BOTTOM WIDTH, 80" HIGH INSULATED 430 SS.
2	1B	LEFT VERTICAL END PANEL 27" TOP WIDTH, 21" BOTTOM WIDTH, 80" HIGH INSULATED 430 SS.
		FIELD WRAPPER 18.00" HIGH FRONT, LEFT, RIGHT.
		BACKSPLASH 80.00" HIGH X 156.00" LONG 430 SS VERTICAL.
		BACKSPLASH 120.00" HIGH X 18.00" LONG 430 SS VERTICAL.
		BACKSPLASH 120.00" HIGH X 18.00" LONG 430 SS VERTICAL.
		RISER SENSOR INSTALL 6IN PLEN.
1	1A	RIGHT VERTICAL END PANEL 27" TOP WIDTH, 21" BOTTOM WIDTH, 80" HIGH INSULATED 430 SS.
		LEFT VERTICAL END PANEL 27" TOP WIDTH, 21" BOTTOM WIDTH, 80" HIGH INSULATED 430 SS.

**PERFORATED SUPPLY PLENUM(S)**

HOOD NO	TAG	POS	LENGTH	WIDTH	HEIGHT	TYPE	RISER(S)			
							WIDTH	LENG	DIA	CFM
1	1A	Front	156"	16"	6"	MUA	12"	28"	720	0.195'
							12"	28"	720	0.195'
							12"	28"	720	0.195'
2	1B	Front	156"	16"	6"	MUA	12"	28"	720	0.195'
							12"	28"	720	0.195'
							12"	28"	720	0.195'

**GREASE DUCT & CHIMNEY SPECIFICATIONS:**  
 PROVIDE GREASE DUCT EQUAL TO ECON-AIR MODEL "EDW"  
 ROUND 20 GAUGE 430 STAINLESS STEEL DUCTWORK. MODEL "EDW"  
 IS LISTED TO UL-1978 AND IS INSTALLED USING "V" CLAMP LOCKING  
 CONNECTIONS SEALED WITH 3M FIRE BARRIER 2000 PLUS. MODEL "EDW"  
 DOES NOT REQUIRE WELDING PROVIDING IT HAS BEEN INSTALLED PER  
 THE MANUFACTURES INSTALLATION GUIDE.  
 PROVIDE RATED ACCESS DOORS AT EVERY CHANGE IN DIRECTION AND EVERY 12' ON CENTER.  
 PER MANUFACTURES LISTING MODEL "EDW" HORIZONTAL RUNS LESS THAN 75 FT. CAN BE  
 SLOPED 1/16" PER 12", HORIZONTAL RUNS MORE THAN 75 FT. CAN BE SLOPED 3/16" PER 12".  
 DUCT SHOULD BE SLOPED AS MUCH AS POSSIBLE TO REDUCE THE CHANCE OF GREASE  
 ACCUMULATION IN HORIZONTAL RUNS.  
 IF THE DUCT OR CHIMNEY IS WITHIN 18 INCHES OF COMBUSTIBLE MATERIAL, PROVIDE  
 UL-2221 OR UL-103 HT LISTED DOUBLE WALL GREASE DUCT OR DOUBLE WALL CHIMNEY  
 EQUAL TO ECON-AIR MODEL "EDW- 2R, 2R TYPE HT, 3R, OR 3Z" ROUND 20 GAUGE 430  
 STAINLESS INNER DUCT INSULATED WITH A 24 GAUGE 430 STAINLESS OUTER SHELL.

ECON-AIR RECOMMENDS THE USE OF LISTED, PRE-FABRICATED ROUND GREASE EXHAUST DUCT TO REDUCE STATIC PRESSURE IN THE SYSTEM, MINIMIZE INSTALLATION AND INSPECTION TIMES, AND ENSURE DUCT IS LIQUID TIGHT

**HVAC DISTRIBUTION NOTE**  
 HIGH VELOCITY DIFFUSERS OR HVAC RETURNS SHOULD NOT BE PLACED WITHIN TEN (10) FEET OF THE EXHAUST HOOD. PERFORATED DIFFUSERS ARE RECOMMENDED.

**VERIFY CEILING HEIGHT**  
 \_\_\_\_\_' - \_\_\_\_\_"  
 HEIGHT REQUIRED TO VERIFY THAT HOOD FITS SPACE AND TO SIZE THE ENCLOSURE PANELS

**CUSTOMER APPROVAL TO MANUFACTURE:**

APPROVED AS NOTED

APPROVED WITH NO EXCEPTION TAKEN

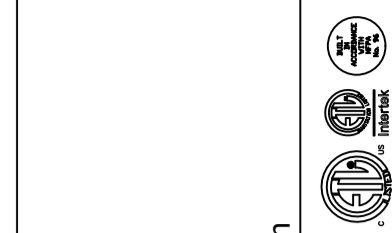
REVISE AND RESUBMIT

SIGNATURE \_\_\_\_\_

YOUR TITLE \_\_\_\_\_ DATE \_\_\_\_\_

**REVISIONS**

DESCRIPTION	DATE:



**econ·air**  
 Indiana Office  
 20 E. Airport Rd. Ste. 100, Brownsburg, IN, 46112 PHONE: (317) 852 - 3770 FAX: 9192278929 EMAIL: reg56@econair.com

YWCA USING EXISTING MUA  
 Fort Wayne, IN, 46808

DATE: 6/6/2024

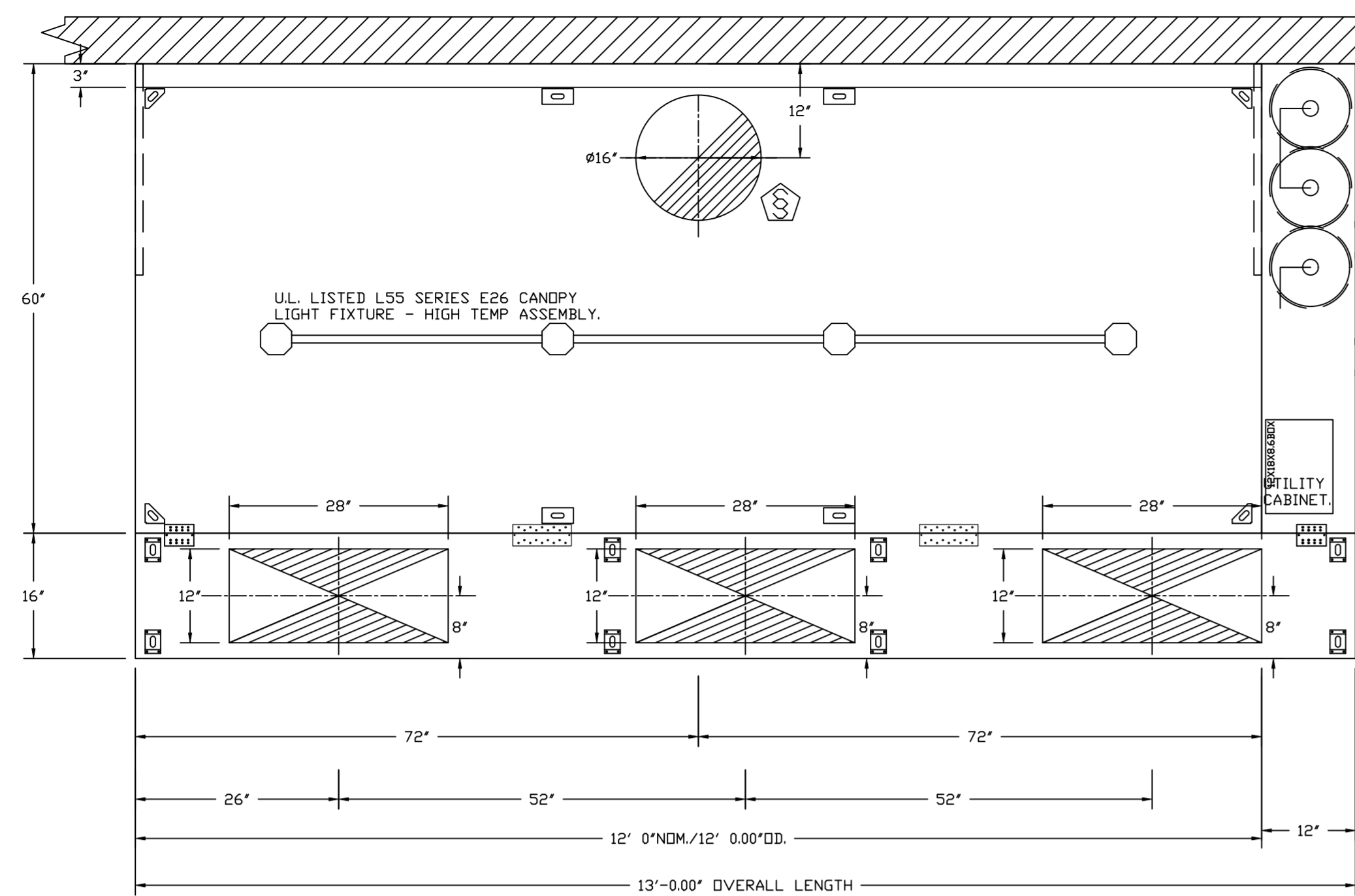
DWG.#:  
6838657

DRAWN BY: DCM-56

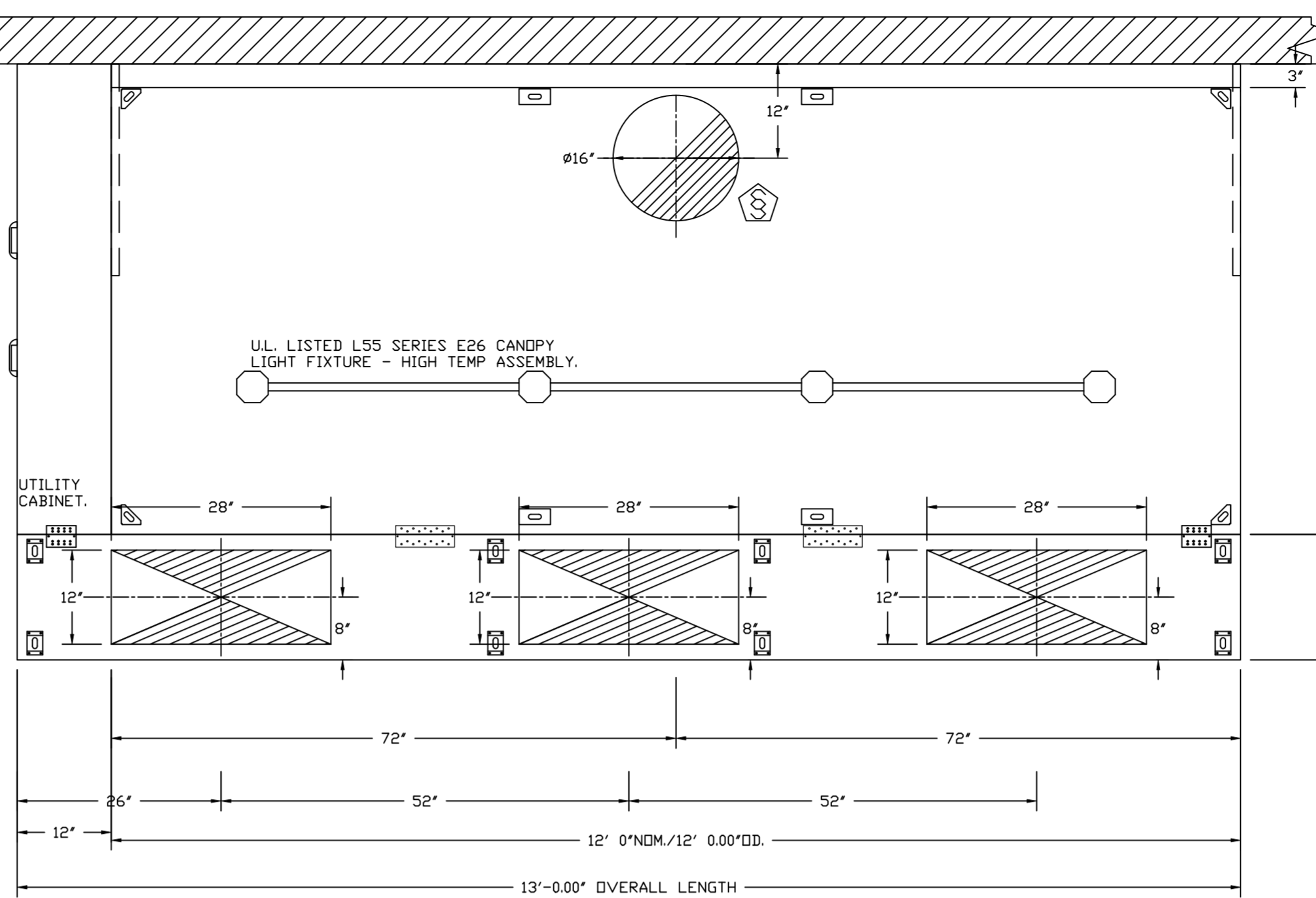
SCALE:  
3/4" = 1'-0"

MASTER DRAWING

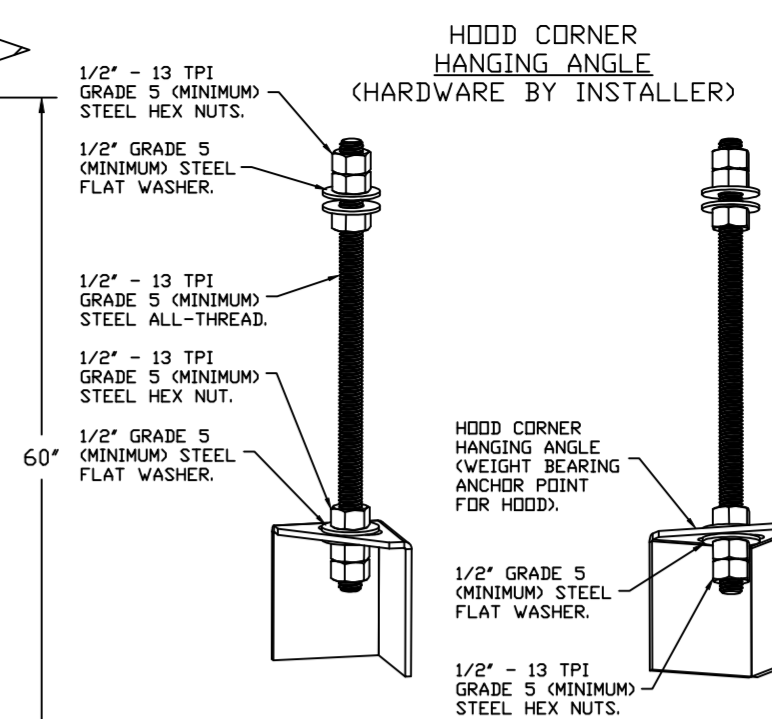
SHEET NO.  
1



PLAN VIEW - HOOD #1 (1A)  
12' 0.00" LONG 6024EX-2-PSP-F  
NOTE: ADDITIONAL HANGING ANGLES PROVIDED FOR HOODS 12' AND LONGER.



PLAN VIEW - HOOD #2 (1B)  
12' 0.00" LONG 6024EX-2-PSP-F  
NOTE: ADDITIONAL HANGING ANGLES PROVIDED FOR HOODS 12' AND LONGER.



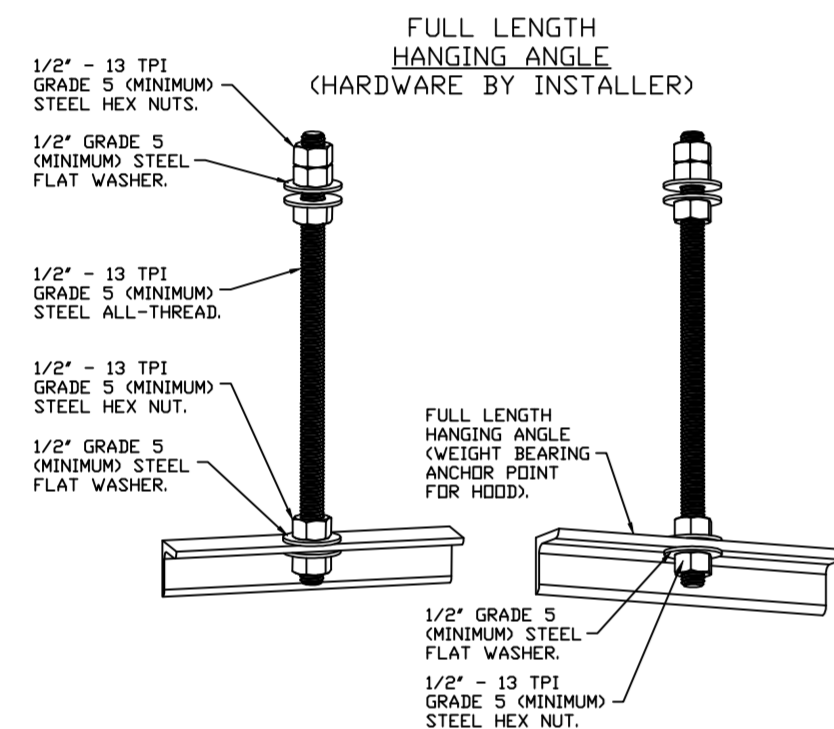
ASSEMBLY INSTRUCTIONS

HANGING ANGLE MUST BE SUPPORTED WITH 1/2" - 13 TPI GRADE 5 (MINIMUM) ALL-THREAD. SANDWICH HANGING ANGLES AND CEILING ANCHOR POINTS WITH 1/2" GRADE 5 (MINIMUM) STEEL FLAT WASHERS AND 1/2" - 13 TPI GRADE 5 (MINIMUM) HEX NUTS AS SHOWN. MUST USE DOUBLED HEX NUT CONFIGURATION BENEATH HOOD HANGING ANGLES AND ABOVE CEILING ANCHORS. MAINTAIN 1/4" OF EXPOSED THREADS BENEATH BOTTOM HEX NUT. TORQUE ALL HEX NUTS TO 57 FT-LBS.

CLEARANCE TO COMBUSTIBLES

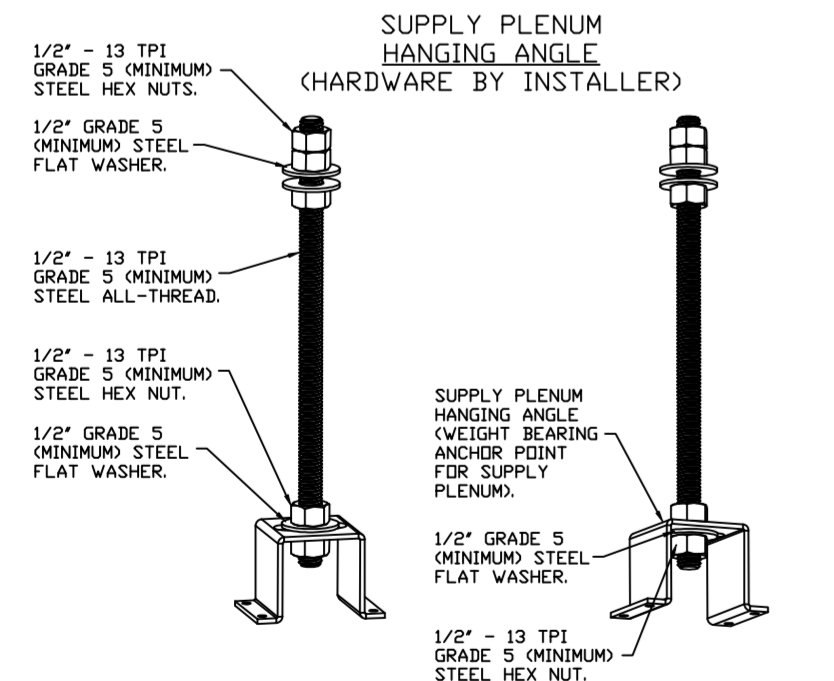
HOODS #	SURFACE	*CLEARANCE
1	TOP	18"
	FRONT	0"
	BACK	18"
	LEFT	18"
2	TOP	18"
	FRONT	0"
	BACK	18"
	RIGHT	18"

- \*0" CLEARANCE TO COMBUSTIBLES CONFORMS TO UL710 STANDARD.  
- HOOD MOUNTED UTILITY CABINETS REQUIRE 36" SERVICE CLEARANCE.



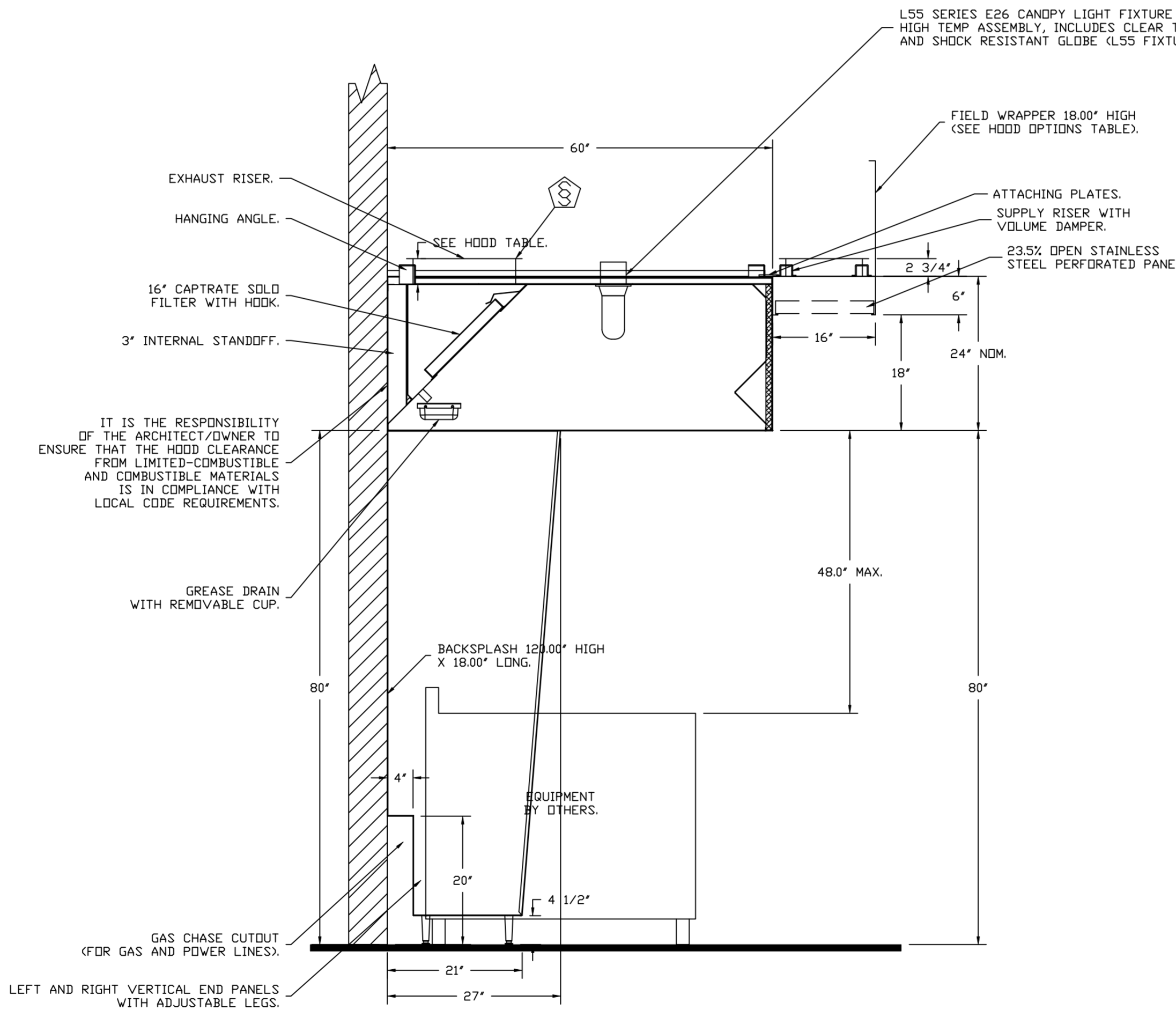
ASSEMBLY INSTRUCTIONS

HANGING ANGLE MUST BE SUPPORTED WITH 1/2" - 13 TPI GRADE 5 (MINIMUM) ALL-THREAD. SANDWICH HANGING ANGLES AND CEILING ANCHOR POINTS WITH 1/2" GRADE 5 (MINIMUM) STEEL FLAT WASHERS AND 1/2" - 13 TPI GRADE 5 (MINIMUM) HEX NUTS AS SHOWN. MUST USE DOUBLED HEX NUT CONFIGURATION ABOVE CEILING ANCHORS. SINGLE HEX NUT BENEATH HANGING ANGLE IS ACCEPTABLE FOR FULL LENGTH HANGING ANGLES. MAINTAIN 1/4" OF EXPOSED THREADS BENEATH BOTTOM HEX NUT. TORQUE ALL HEX NUTS TO 57 FT-LBS.

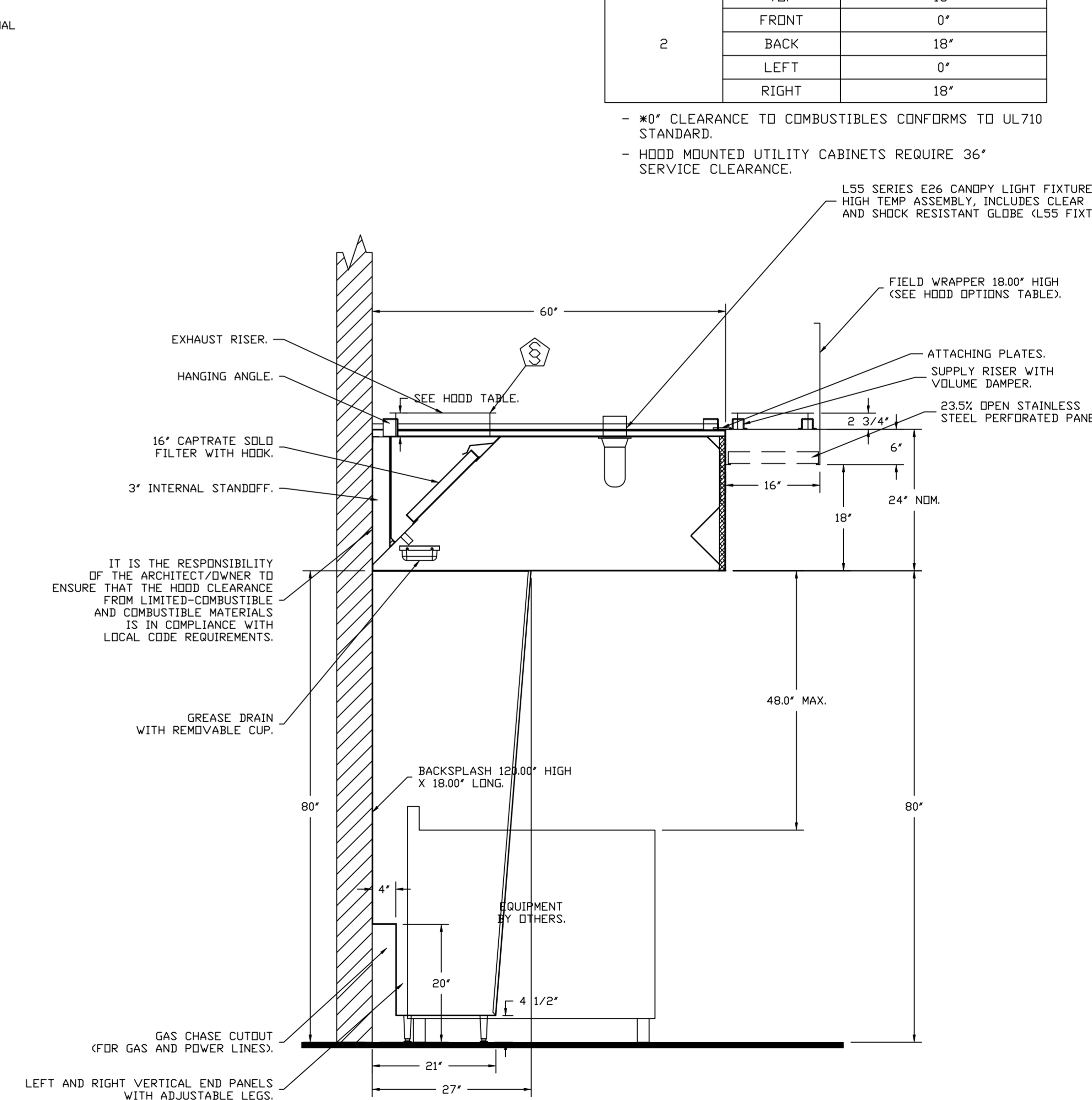


ASSEMBLY INSTRUCTIONS

HANGING ANGLE MUST BE SUPPORTED WITH 1/2" - 13 TPI GRADE 5 (MINIMUM) ALL-THREAD. SANDWICH HANGING ANGLES AND CEILING ANCHOR POINTS WITH 1/2" GRADE 5 (MINIMUM) STEEL FLAT WASHERS AND 1/2" - 13 TPI GRADE 5 (MINIMUM) HEX NUTS AS SHOWN. MUST USE DOUBLED HEX NUT CONFIGURATION ABOVE CEILING ANCHORS. SINGLE HEX NUT BENEATH HANGING ANGLE IS ACCEPTABLE FOR PSP HANGING ANGLES. MAINTAIN 1/4" OF EXPOSED THREADS BENEATH BOTTOM HEX NUT. TORQUE ALL HEX NUTS TO 57 FT-LBS.



SECTION VIEW - MODEL 6024EX-2-PSP-F  
HOOD - #1 (1A)



SECTION VIEW - MODEL 6024EX-2-PSP-F  
HOOD - #2 (1B)

**REVISIONS**

DESCRIPTION	DATE

**econ·air**  
www.econair.com

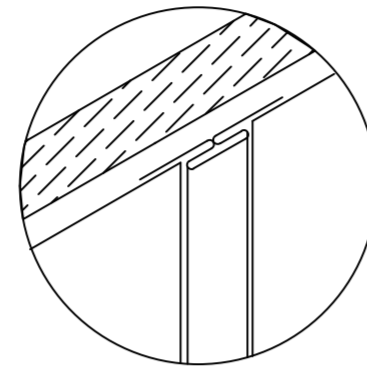
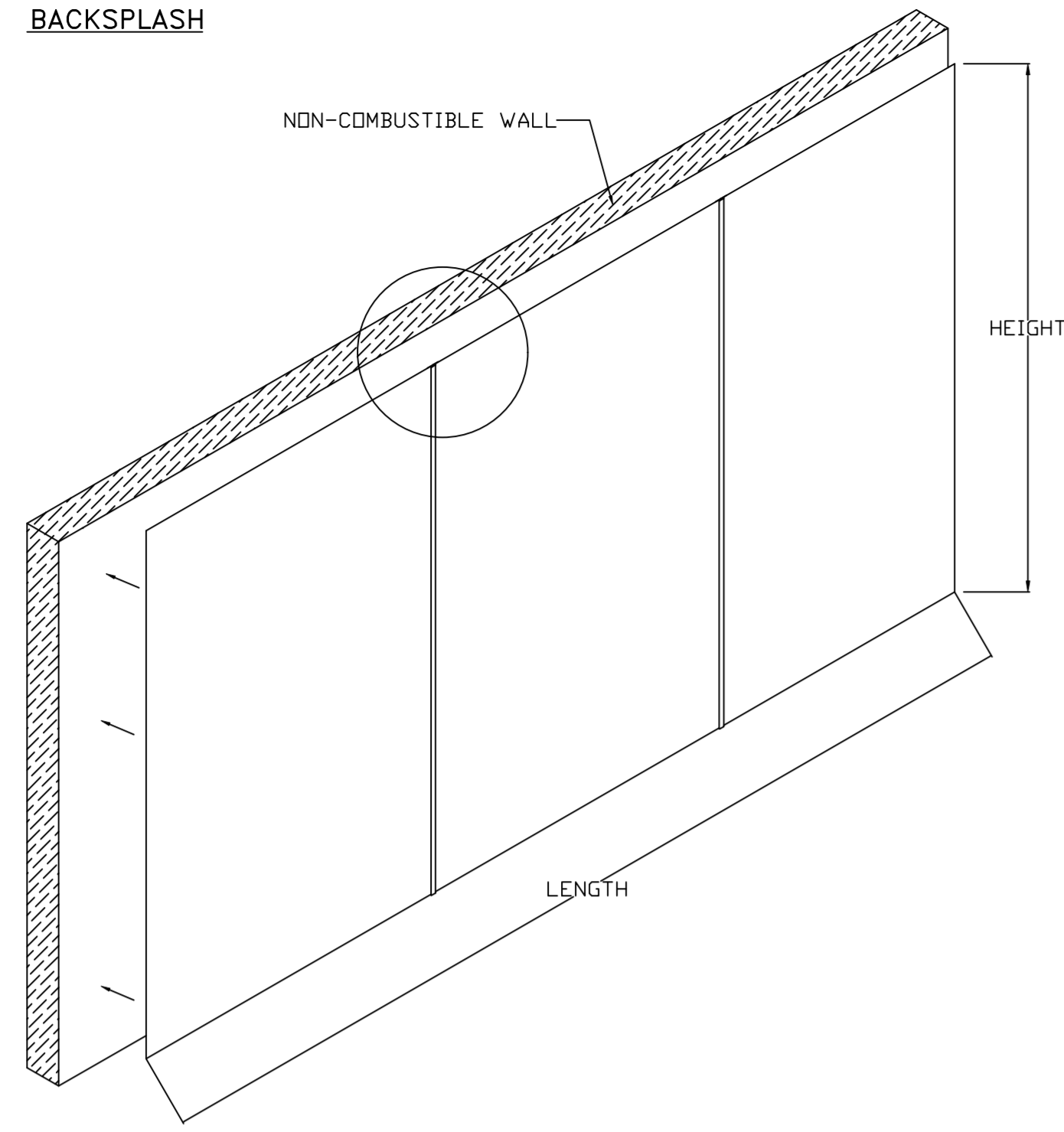
**Indiana Office**  
20 E. Airport Rd. Ste. 100, Brownsburg, IN, 46112 PHONE: (317) 852 - 3770 FAX: 9192278929 EMAIL: reg56@econair.com

YWCA USING EXISTING MUA  
Fort Wayne, IN, 46808

DATE: 6/6/2024  
DWG.#: 6838657  
DRAWN BY: DCM-56  
SCALE: 3/4" = 1'-0"  
MASTER DRAWING

SHEET NO.  
2

**BACKSPLASH**

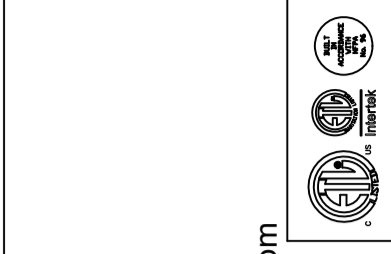


BACKSPLASH PANELS  
SLIDE INTO DIVIDER  
BAR

- BACKSPLASH IS NOT  
INSULATED AND IS UNSUITABLE  
FOR INSTALL AGAINST  
COMBUSTIBLE WALLS

**REVISIONS**

DESCRIPTION	DATE



**econ·air**  
www.econair.com

**Indiana Office**  
20 E. Airport Rd. Ste. 100, Brownsburg, IN, 46112 PHONE: (317) 852 - 3770 FAX: 9192275929 EMAIL: reg56@econair.com

YWCA USING EXISTING MUA  
Fort Wayne, IN, 46808

**DATE:** 6/6/2024

**DWG.#:**  
6838657

**DRAWN BY:** DCM-56

**SCALE:**  
3/4" = 1'-0"

**MASTER DRAWING**

**SHEET NO.**  
3

**FIRE SYSTEM INFORMATION - JOB#6838657**

FIRE SYSTEM NO	TAG	TYPE	SIZE	MAX FP	DESIGN FP	INSTALLATION	
						SYSTEM	LOCATION ON HOOD
1		TANK FS	4.0/4.0/4.0	60	59	FIRE CABINET RIGHT	RIGHT, HOOD 1

**GAS VALVE(S)**

FIRE SYSTEM NO	TAG	TYPE	SIZE	SUPPLIED BY
1		SC ELECTRICAL	1.250	DISTRIBUTOR

**FIRE SYSTEM PARTS LIST KEY**

FIRE SYSTEM NO	TAG	KEY NUMBER - PART DESCRIPTION	QTY BY FACTORY	QTY BY DIST
1		0 - 0 - TANK FIRE SUPPRESSION MAINTENANCE GUIDE UTILITY CABINET LABEL SHEET.	1	0
		0 - 0 - TANK FIRE SUPPRESSION POST-DISCHARGE PROCEDURE UTILITY CABINET LABEL SHEET.	1	0
		0 - 0 - 12-F28021-32144-0T-360 DUCT FIRE THERMOSTAT WITH 12 FOOT WIRE LEADS. NO, CLOSE ON TEMP RISE AT 360°F. (A0034310).	2	0
		0 - 0 - 4429K153 1/2" MALE NPT TO 1/2" FEMALE NPT ELBOW, BRASS.	3	0
		0 - 0 - 4429K422 1/2" X 1/4" BRASS REDUCING BUSHING.	2	0
		0 - 0 - 79525 1/2" 90 PRO-PRESS ELBOW WITH 1/2" NPT FEMALE CONNECTION, VIEGA.	2	0
		0 - 0 - 79580 1/2" X 1/2" PRO-PRESS TEE X 1/2" NPT FEMALE CONNECTION, VIEGA.	3	0
		0 - 0 - 87-120042-001 SECONDARY ACTUATOR VALVE (SVA) - SINGLE ACTUATOR, REQUIRES PRIMARY RELEASE ACTUATOR, TANK FIRE SUPPRESSION.	2	0
		0 - 0 - 87-120045-001 HOSE, SECONDARY ACTUATOR HOSE, 7.5' BRAIDED STAINLESS STEEL, TANK FIRE SUPPRESSION.	2	0
		0 - 0 - 87-300001-001 TANK - PRESSURIZED TANK USED FOR TANK FIRE SUPPRESSION.	3	0
		0 - 0 - 87-300030-001 PRIMARY ACTUATOR KIT (PAK) - ACTUATOR AND RELEASE SOLENOID ASSEMBLY, ONE NEEDED PER FIRE SYSTEM, SUPERVISED, TANK FIRE SUPPRESSION.	1	0
		0 - 0 - 87-300152-001 HARDWARE, SVA BOLTS, TANK FIRE SUPPRESSION.	12	0
		0 - 0 - 98694A115 HARDWARE, DATANKLOCK LOCKING BRACKET SQUARE NUTS 5/16" ZINC, TANK FIRE SUPPRESSION.	6	0
		0 - 0 - A0034332 JUNCTION BOX FOR MANUAL PULL STATION. 1.5" DEEP BACK BOX, RED COLOR.	1	0
		0 - 0 - A31484 1/4" NPT SCHRADER VALVE AND CAP, JB INDUSTRIES. 1/4" FLARE X 1/4" MPT HALF UNION. USED ON TANK SERVICE PORT.	2	0
		0 - 0 - DATANKLOCK DISCHARGE ADAPTER TANK LOCKING PLATE FOR FIRE SYSTEM TANK INSTALLATION IN UTILITY CABINETS, TANK FIRE SUPPRESSION.	3	0
		0 - 0 - SLPCDN-03FT SUPERVISED LOOP CONNECTION KIT. CONTAINS THE PARTS NEEDED TO CONNECT THE SUPERVISED LOOP BETWEEN END TO END HOODS WITH LESS THAN A 2' GAP. KIT CONTAINS 5 FEET OF BLACK MG WIRE, 5 FEET OF TAN MG WIRE, 3 FEET OF FLEXIBLE CONDUIT, AND TWO 7/8" CONNECTORS.	1	0
		0 - 0 - SLPCDN-05FT SUPERVISED LOOP CONNECTION KIT. CONTAINS THE PARTS NEEDED TO CONNECT THE SUPERVISED LOOP BETWEEN END TO END HOODS WITH LESS THAN A 4' GAP. KIT CONTAINS 7 FEET OF BLACK MG WIRE, 7 FEET OF TAN MG WIRE, 5 FEET OF FLEXIBLE CONDUIT, AND TWO 7/8" CONNECTORS.	1	0
		0 - 0 - SLPCDN-30FT SUPERVISED LOOP CONNECTION KIT. CONTAINS THE PARTS NEEDED TO CONNECT THE SUPERVISED LOOP BETWEEN HOODS WITH UPTO 29' GAP. KIT CONTAINS 32 FEET OF BLACK MG WIRE, 32 FEET OF TAN MG WIRE, 30 FEET OF FLEXIBLE CONDUIT, AND TWO 7/8" CONNECTORS.	1	0
		0 - 0 - TANK STRAP TANK STRAP - USED FOR TANK FIRE SUPPRESSION.	9	0
	0 - 0 - TFS-UCTANKBRACKET TANK BRACKET FOR FIRE SYSTEM TANK INSTALLATION IN UTILITY CABINETS, TANK FIRE SUPPRESSION.	3	0	
	0 - 0 - WK-283952-000 DISCHARGE ADAPTER, TANK FIRE SUPPRESSION.	3	0	
	34 - 34 - A0034331 24VDC SINGLE ACTION MANUAL ACTUATION DEVICE (PUSH/PULL STATION) WITH PROTECTIVE COVER, ONE (1) NORMALLY OPEN CONTACT. RED COLOR.	1	0	
	ADDITIONAL PARTS TO BE DETERMINED..			

REVISIONS	
DESCRIPTION	DATE



**Indiana Office**  
www.econair.com  
20 E. Airport Rd. Ste. 100, Brownsburg, IN, 46112 PHONE: (317) 852-3770 FAX: 9192278929 EMAIL: regis6@econair.com

YWCA USING EXISTING MUA  
Fort Wayne, IN, 46808

**DATE:** 6/6/2024

**DWG.#:** 6838657

**DRAWN BY:** DCM-56

**SCALE:** 3/4" = 1'-0"

**MASTER DRAWING**

**SHEET NO.**  
4

**EXHAUST FAN INFORMATION – JOB#6838657**

FAN UNIT NO	TAG	QTY	FAN UNIT MODEL #	MANUFACTURER	CFM	ESP	RPM	MOTOR ENCL	HP	BHP	PHASE	VOLT	FLA	DISCHARGE VELOCITY	WEIGHT (LBS)	SONES
1		1	EADU180H	ECON-AIR	2700	1.500	1268	DDP,PREMIUM	2.000	1.4040	3	208	7.2	624 FPM	216	18
2		1	EADU180H	ECON-AIR	2700	1.500	1268	DDP,PREMIUM	2.000	1.4040	3	208	7.2	624 FPM	216	18

**FAN OPTIONS**

FAN UNIT NO	TAG	QTY	DESCRIPTION
1		1	GREASE BOX
		1	FAN BASE CERAMIC SEAL – DU/DR180HFA – INSTALLED AT PLANT – FOR GREASE DUCTS
		1	EXHAUST FAN HEAT BAFFLE
		1	2 YEAR PARTS WARRANTY
2		1	GREASE BOX
		1	FAN BASE CERAMIC SEAL – DU/DR180HFA – INSTALLED AT PLANT – FOR GREASE DUCTS
		1	EXHAUST FAN HEAT BAFFLE
		1	2 YEAR PARTS WARRANTY

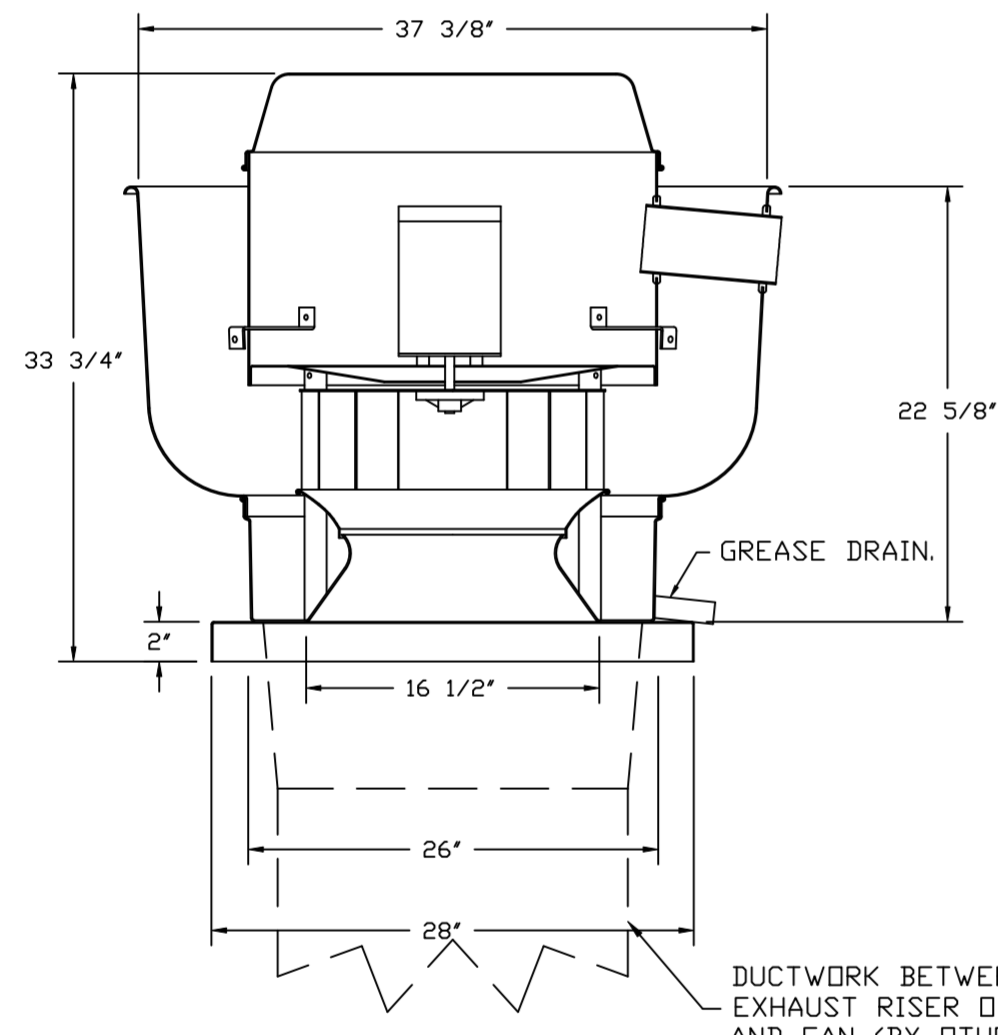
**FAN ACCESSORIES**

FAN UNIT NO	TAG	EXHAUST				SUPPLY		
		GREASE CUP	GRAVITY DAMPER	WALL MOUNT	SIDE DISCHARGE	GRAVITY DAMPER	MOTORIZED DAMPER	WALL MOUNT
1		YES						
2		YES						

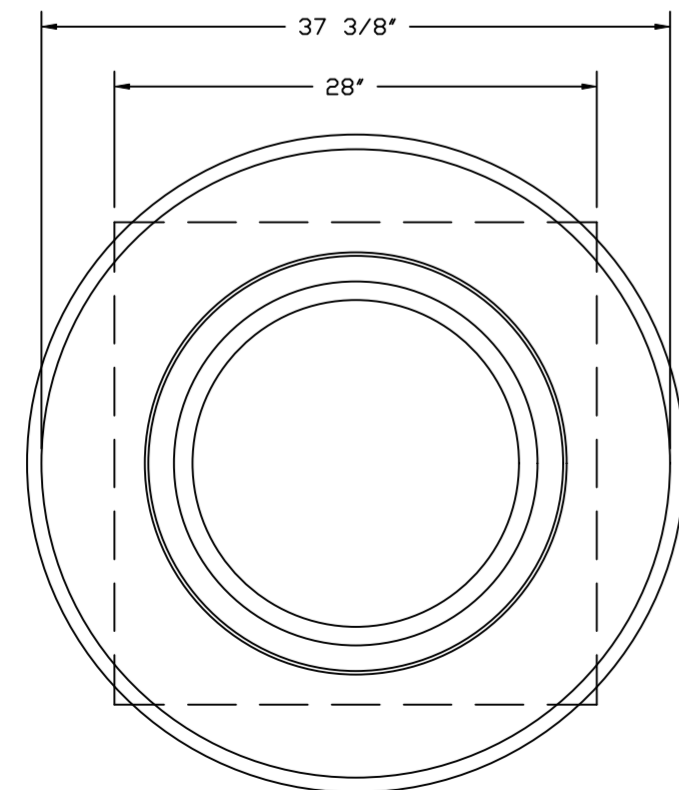
**CURB ASSEMBLIES**

NO	DN FAN	WEIGHT	ITEM	SIZE
1	# 1	34 LBS	CURB	26.500"W X 26.500"L X 22.000"H VENTED HINGED.
2	# 2	34 LBS	CURB	26.500"W X 26.500"L X 22.000"H VENTED HINGED.

FANS #1, #2 – EADU180H EXHAUST FAN



DUCTWORK BETWEEN EXHAUST RISER ON HOOD AND FAN (BY OTHERS).



TOP VIEW

**FEATURES:**

- DIRECT DRIVE CONSTRUCTION (NO BELTS/PULLEYS).
- ROOF MOUNTED FANS.
- RESTAURANT MODEL.
- UL705 AND UL762 AND ULC-S645
- VARIABLE SPEED CONTROL.
- INTERNAL WIRING.
- THERMAL OVERLOAD PROTECTION (SINGLE PHASE).
- HIGH HEAT OPERATION 300°F (149°C).
- GREASE CLASSIFICATION TESTING.
- NEMA 3R SAFETY DISCONNECT SWITCH.

**NORMAL TEMPERATURE TEST**

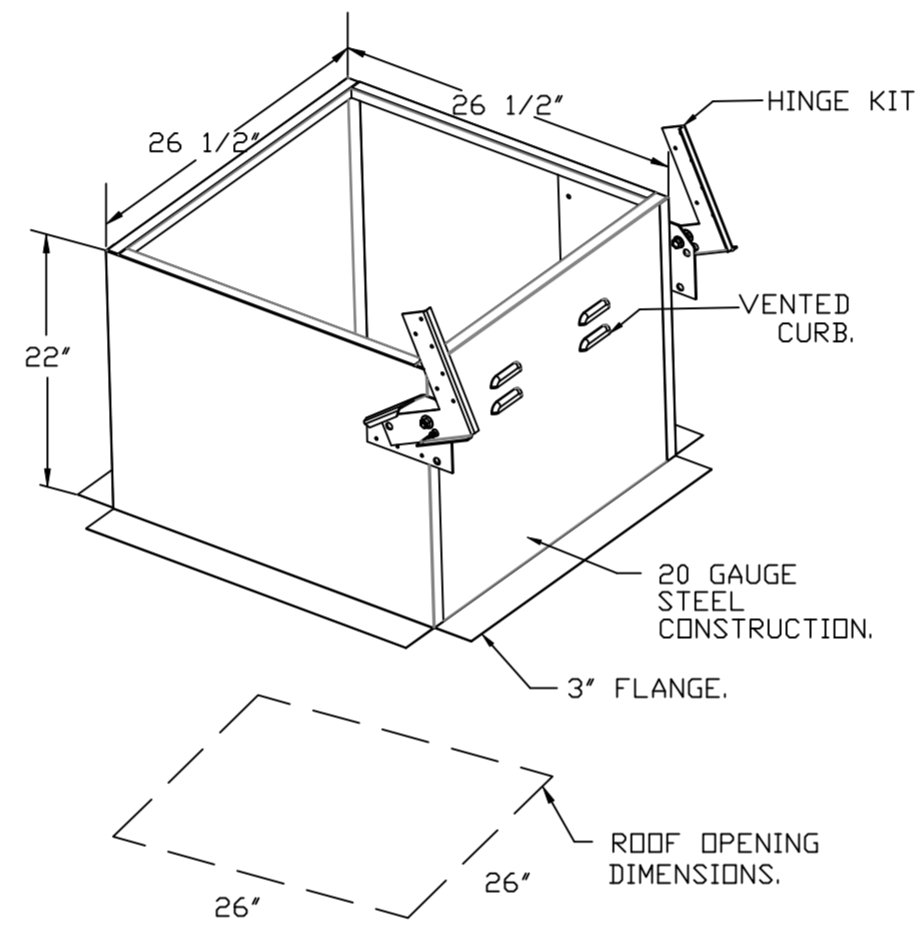
EXHAUST FAN MUST OPERATE CONTINUOUSLY WHILE EXHAUSTING AIR AT 300°F (149°C) UNTIL ALL FAN PARTS HAVE REACHED THERMAL EQUILIBRIUM, AND WITHOUT ANY DETERIORATING EFFECTS TO THE FAN WHICH WOULD CAUSE UNSAFE OPERATION.

**ABNORMAL FLARE-UP TEST**

EXHAUST FAN MUST OPERATE CONTINUOUSLY WHILE EXHAUSTING BURNING GREASE VAPORS AT 600°F (316°C) FOR A PERIOD OF 15 MINUTES WITHOUT THE FAN BECOMING DAMAGED TO ANY EXTENT THAT COULD CAUSE AN UNSAFE CONDITION.

**OPTIONS**

- GREASE BOX.
- FAN BASE CERAMIC SEAL – DU/DR180HFA
- INSTALLED AT PLANT – FOR GREASE DUCTS.
- EXHAUST FAN HEAT BAFFLE.
- 2 YEAR PARTS WARRANTY.



**REVISIONS**

DESCRIPTION	DATE:

**Indiana Office**  
www.econair.com  
20 E. Airport Rd. Ste. 100, Brownsburg, IN, 46112 PHONE: (317) 852-3770 FAX: 9192275929 EMAIL: reg66@econair.com

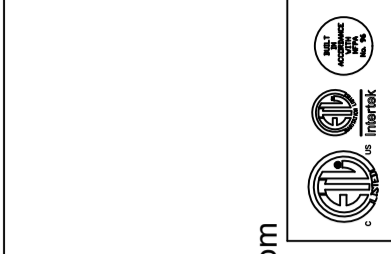
YWCA USING EXISTING MUA  
Fort Wayne, IN, 46808

DATE: 6/6/2024  
DWG.#: 6838657  
DRAWN BY: DCM-56  
SCALE: 3/4" = 1'-0"  
MASTER DRAWING

SHEET NO.  
5

**REVISIONS**

DESCRIPTION	DATE:



**econ·air**  
 www.econair.com  
**Indiana Office**  
 20 E. Airport Rd. Ste. 100, Brownsburg, IN, 46112 PHONE: (317) 852-3770 FAX: 9192275929 EMAIL: reg66@econair.com

YWCA USING EXISTING MUA  
 Fort Wayne, IN, 46808

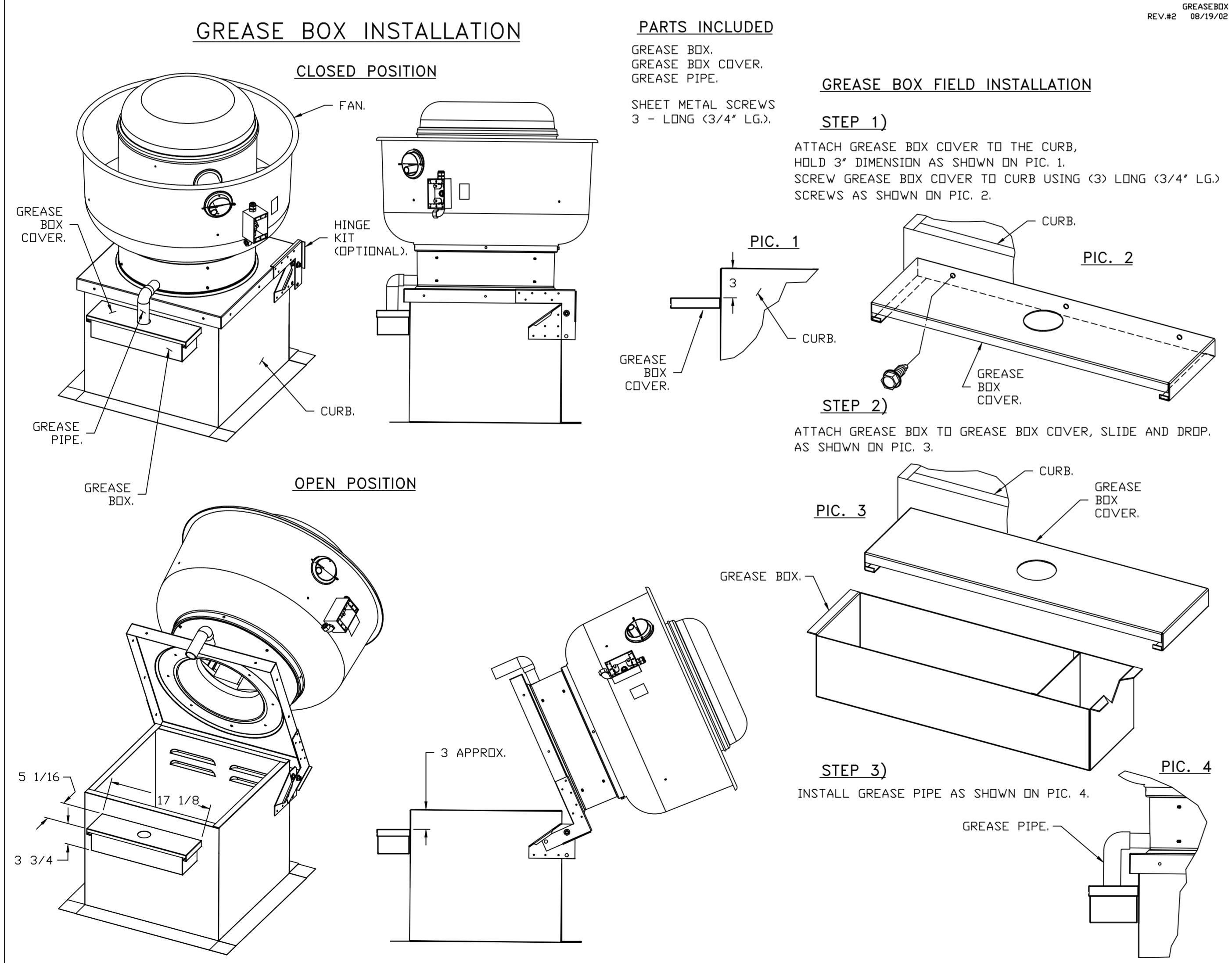
**DATE:** 6/6/2024  
**DWG.#:** 6838657  
**DRAWN BY:** DCM-56  
**SCALE:** 3/4" = 1'-0"  
**MASTER DRAWING**

**SHEET NO.**  
 6

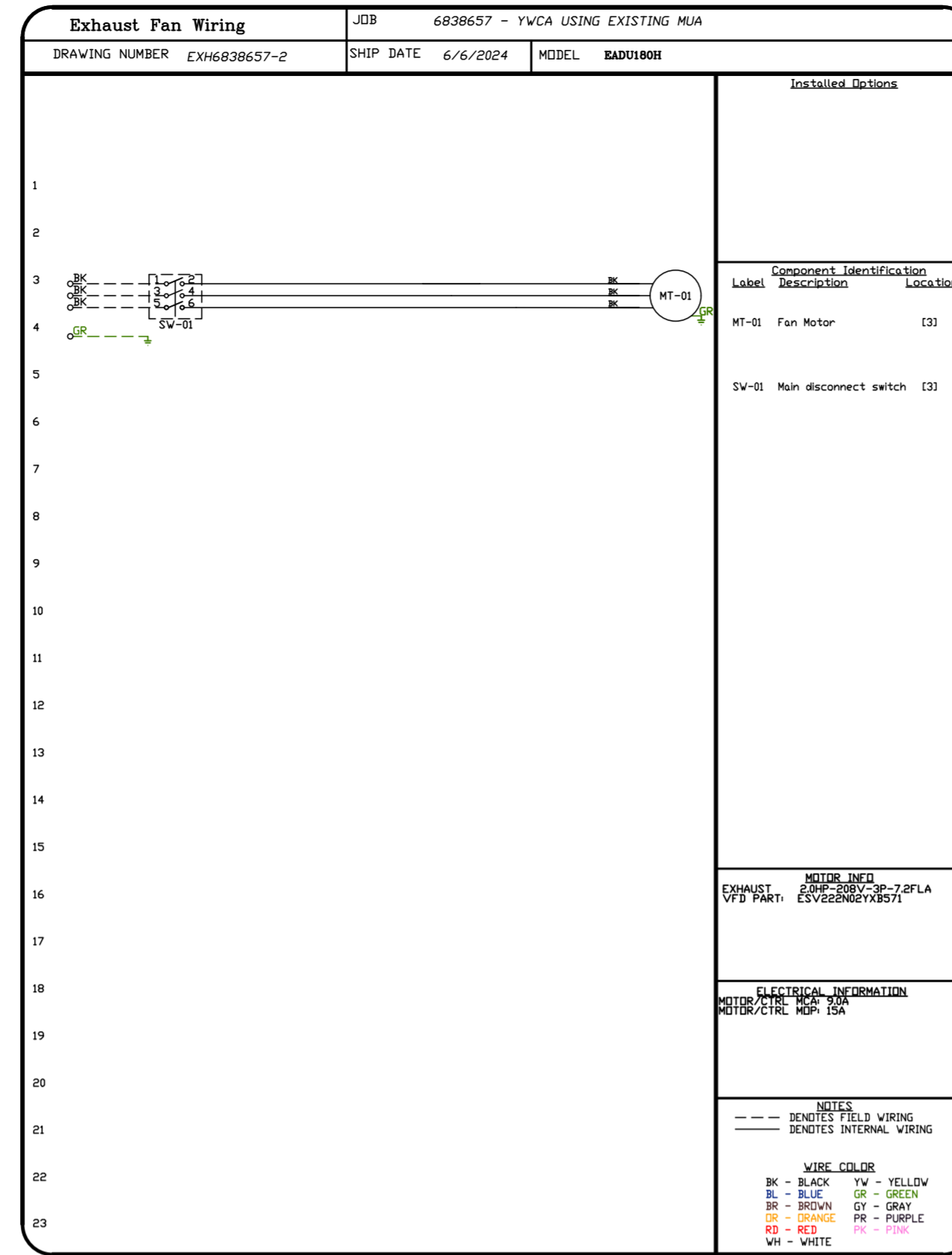
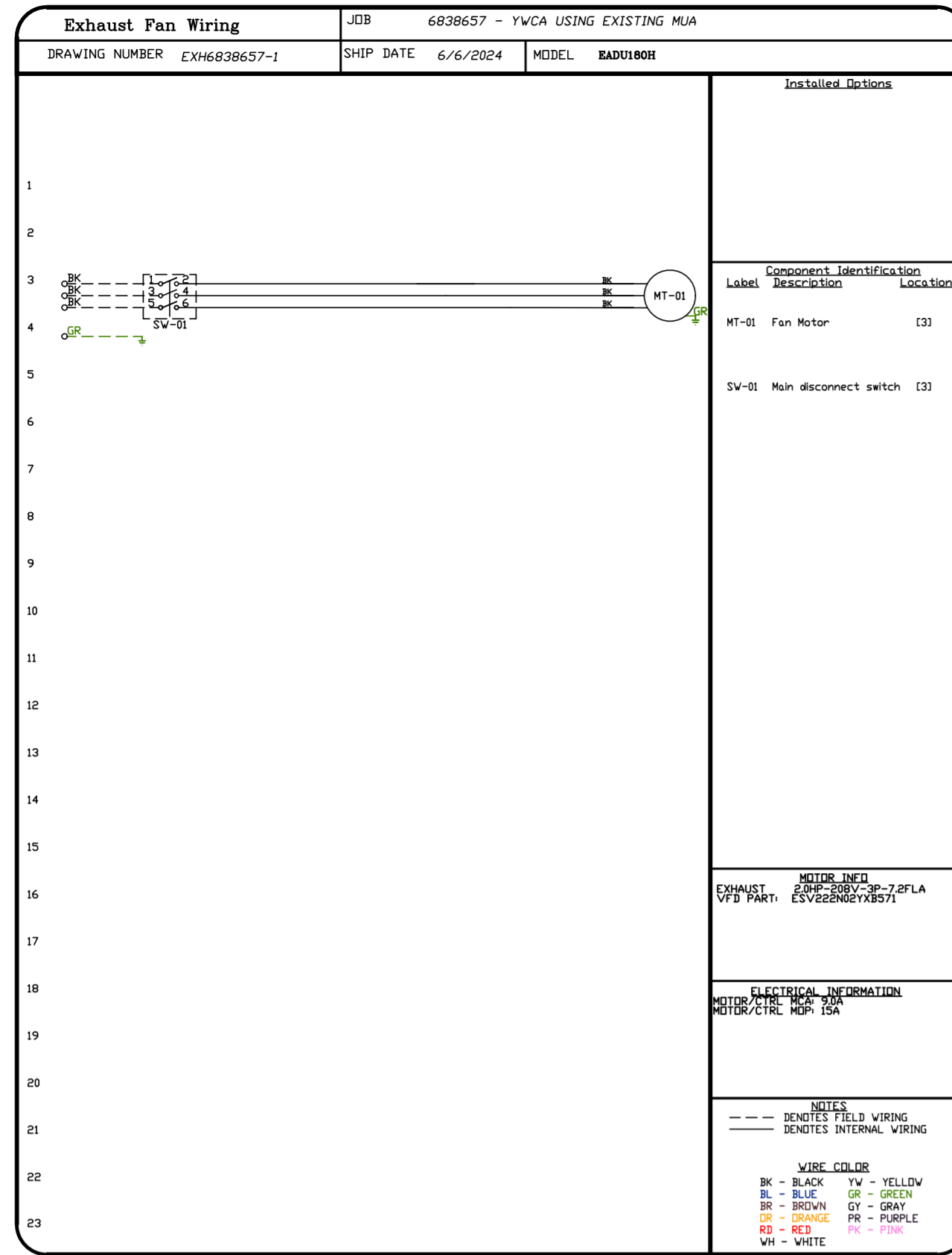
**GREASE DUCT & CHIMNEY SPECIFICATIONS:**  
 PROVIDE GREASE DUCT EQUAL TO ECON-AIR MODEL "EDW"  
 ROUND 20 GAUGE 430 STAINLESS STEEL DUCTWORK. MODEL "EDW"  
 IS LISTED TO UL-1978 AND IS INSTALLED USING "V" CLAMP LOCKING  
 CONNECTIONS SEALED WITH 3M FIRE BARRIER 2000 PLUS. MODEL "EDW"  
 DOES NOT REQUIRE WELDING PROVIDING IT HAS BEEN INSTALLED PER  
 THE MANUFACTURES INSTALLATION GUIDE.  
 PROVIDE RATED ACCESS DOORS AT EVERY CHANGE IN DIRECTION AND EVERY 12' ON CENTER.  
 PER MANUFACTURES LISTING MODEL "EDW" HORIZONTAL RUNS LESS THAN 75 FT. CAN BE  
 SLOPED 1/16" PER 12", HORIZONTAL RUNS MORE THAN 75 FT. CAN BE SLOPED 3/16" PER 12".  
 DUCT SHOULD BE SLOPED AS MUCH AS POSSIBLE TO REDUCE THE CHANCE OF GREASE  
 ACCUMULATION IN HORIZONTAL RUNS.  
  
 IF THE DUCT OR CHIMNEY IS WITHIN 18 INCHES OF COMBUSTIBLE MATERIAL, PROVIDE  
 UL-2221 OR UL-103 HT LISTED DOUBLE WALL GREASE DUCT OR DOUBLE WALL CHIMNEY  
 EQUAL TO ECON-AIR MODEL "EDW- 2R, 2R TYPE HT, 3R, OR 3Z" ROUND 20 GAUGE 430  
 STAINLESS INNER DUCT INSULATED WITH A 24 GAUGE 430 STAINLESS OUTER SHELL.

**CUSTOMER APPROVAL TO MANUFACTURE:**

APPROVED AS NOTED   
 APPROVED WITH NO EXCEPTION TAKEN   
 REVISE AND RESUBMIT   
 SIGNATURE \_\_\_\_\_  
 YOUR TITLE \_\_\_\_\_ DATE \_\_\_\_\_



\*NOTE: UL 705 INSTALL.



REVISIONS	
DESCRIPTION	DATE:

www.econair.com  
Indiana Office  
20 E. Airport Rd. Ste. 100, Brownsburg, IN, 46112 PHONE: (317) 852 - 3770 FAX: 9192275929 EMAIL: reg56@econair.com

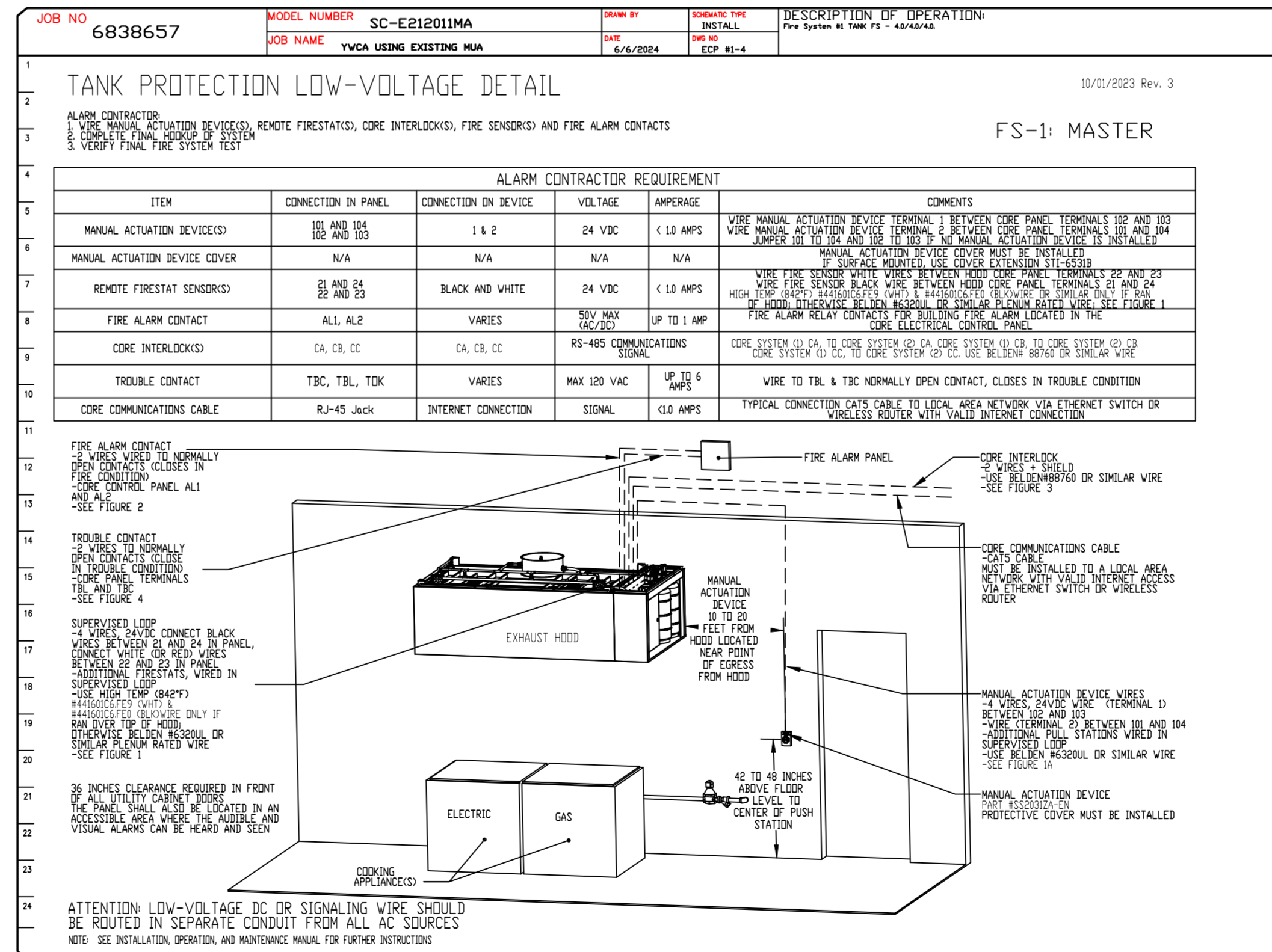
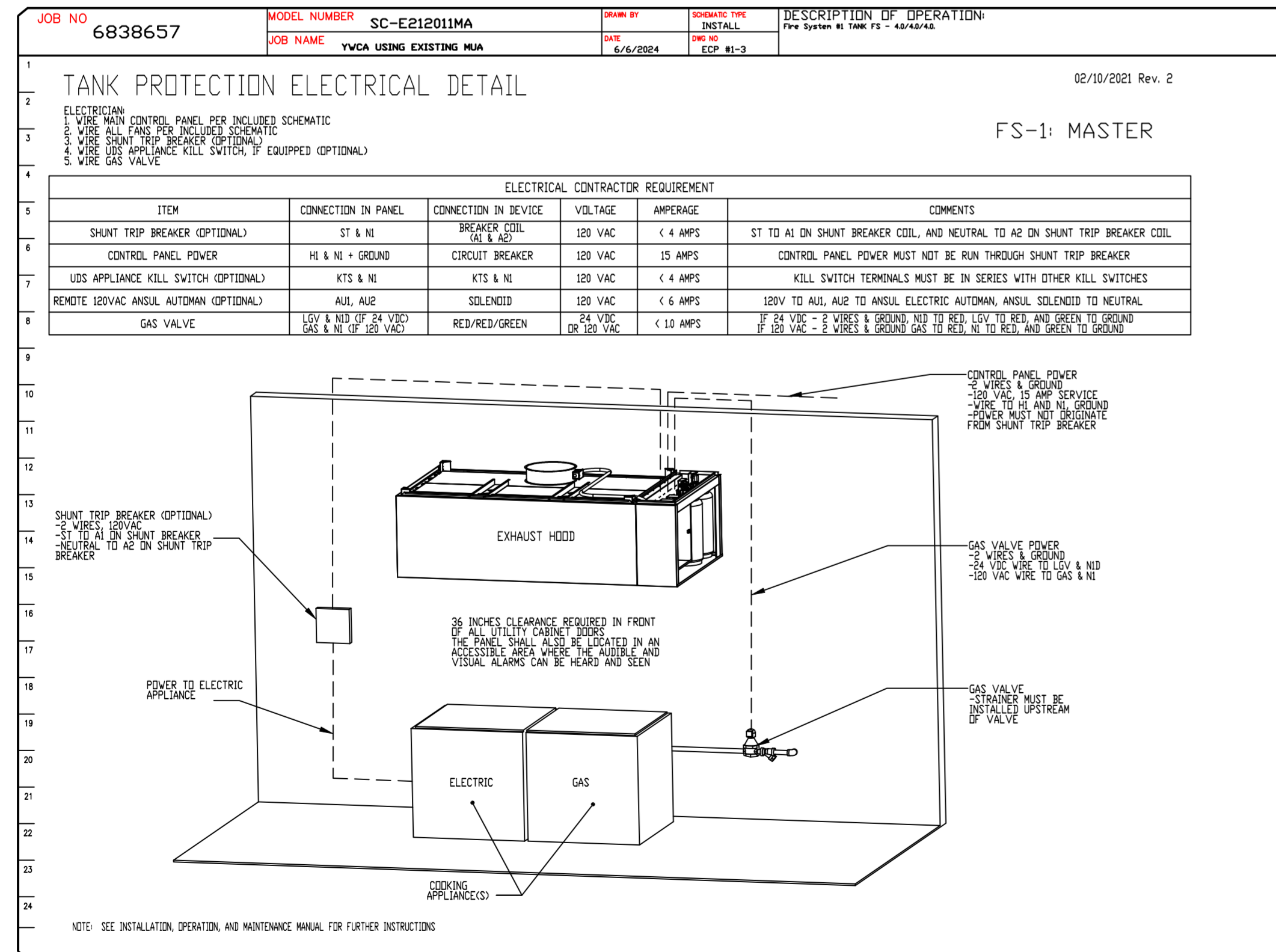
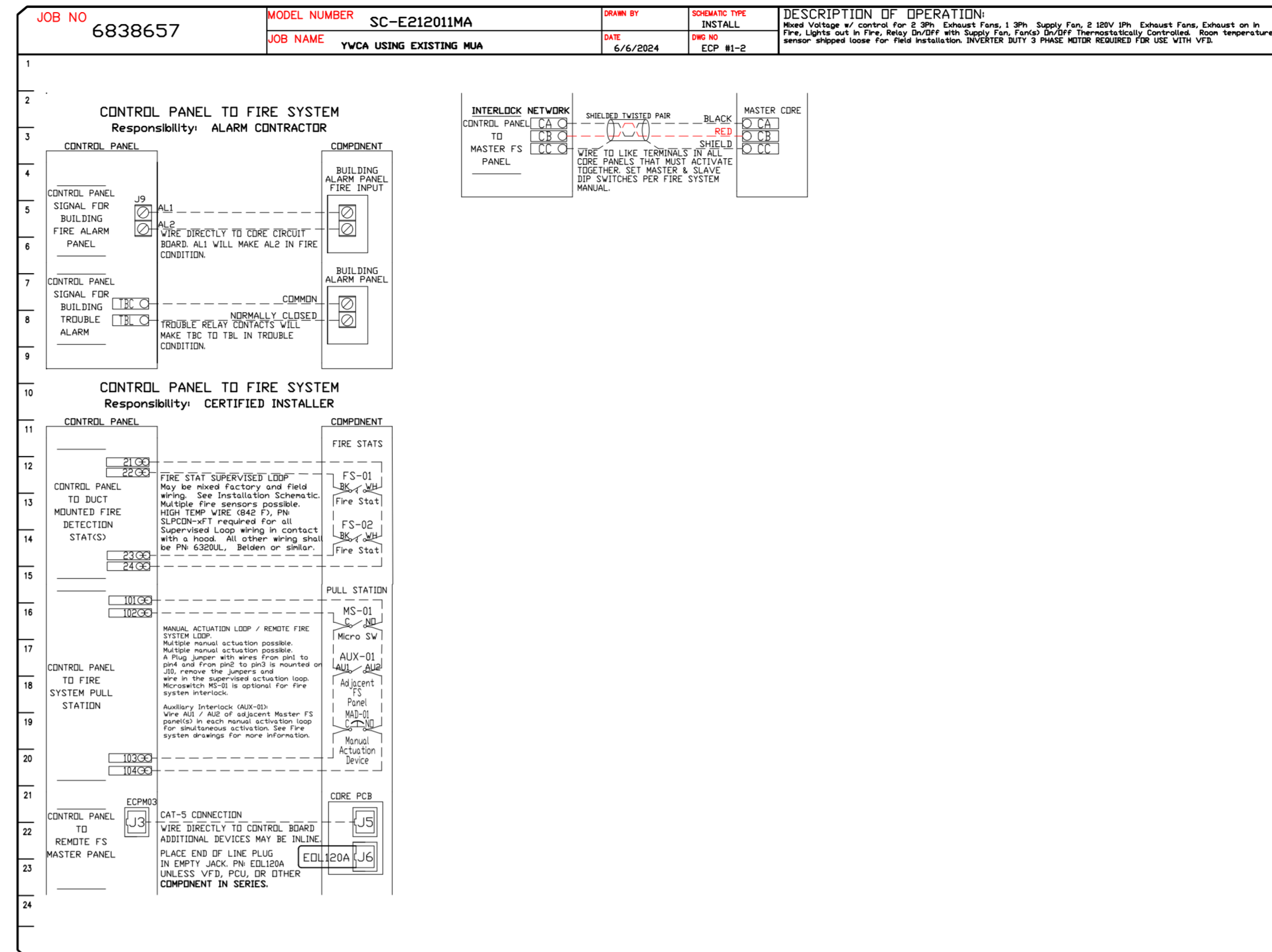
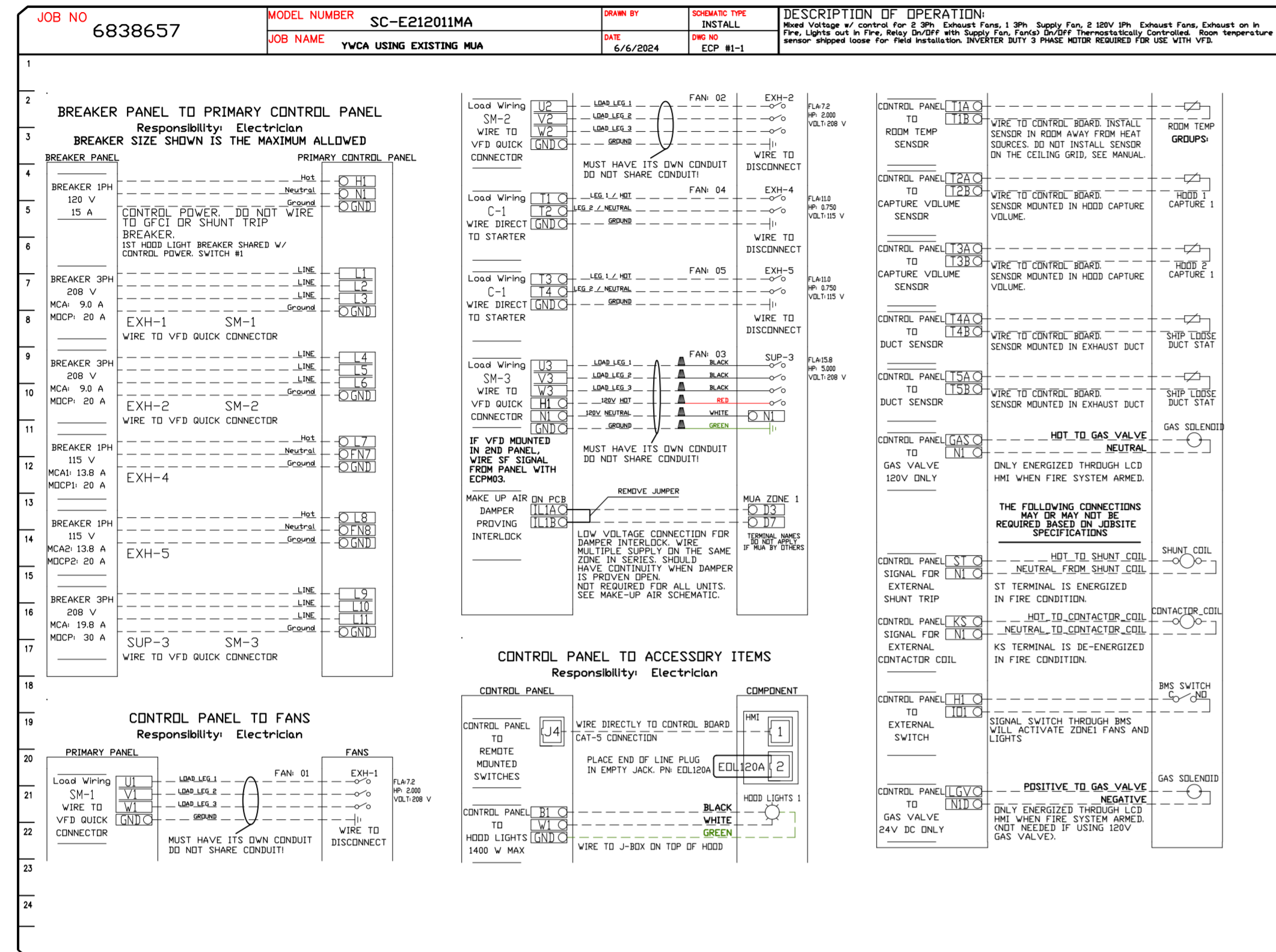
YWCA USING EXISTING MUA  
Fort Wayne, IN, 46808

<b>DATE:</b> 6/6/2024
<b>DWG.#:</b> 6838657
<b>DRAWN BY:</b> DCM-56
<b>SCALE:</b> 3/4" = 1'-0"
<b>MASTER DRAWING</b>

**SHEET NO.**  
7

**ELECTRICAL PACKAGE - JOB#6838657**

NO	TAG	PACKAGE #	LOCATION	SWITCHES		OPTIDN	FANS CONTROLLED				
				LOCATION	QUANTITY		TYPE	#	HP	VOLT	FLA
1		SC-E212011MA	WALL MOUNT IN SS BOX	UTILITY CABINET RIGHT	1 LIGHT 1 FAN	SMART CONTROLS THERMOSTATIC CONTROL W/ RELAY ON/OFF WITH SUPPLY	EXHAUST	3	2.000	208	7.2
							SUPPLY	3	5.000	208	15.8
							EXHAUST	1	0.750	115	11.0
							EXHAUST	1	0.750	115	11.0



**REVISIONS**

NO.	DESCRIPTION	DATE

**www.econair.com**

**INDIANA OFFICE**

**20 E. Airport Rd. Ste. 100, Brownsburg, IN 46112 PHONE: (317) 852 - 3770 FAX: 9192278299 EMAIL: regis@econair.com**

**YWCA USING EXISTING MUA**  
Fort Wayne, IN, 46808

**DATE:** 6/6/2024

**DWG.#:** 6838657

**DRAWN BY:** DCM-56

**SCALE:** 3/4" = 1'-0"

**MASTER DRAWING**

**SHEET NO.** 8





SYSTEM DESIGN VERIFICATION (SDV)

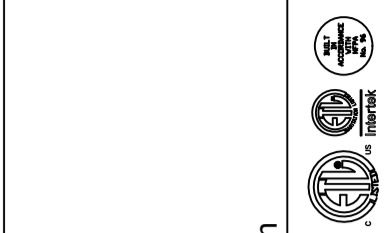
IF ORDERED, CAS SERVICE WILL PERFORM A SYSTEM DESIGN VERIFICATION (SDV) ONCE ALL EQUIPMENT HAS HAD A COMPLETE START UP PER THE OPERATION AND INSTALLATION MANUAL. TYPICALLY, THE SDV WILL BE PERFORMED AFTER ALL INSPECTIONS ARE COMPLETE.

ANY FIELD RELATED DISCREPANCIES THAT ARE DISCOVERED DURING THE SDV WILL BE BROUGHT TO THE ATTENTION OF THE GENERAL CONTRACTOR AND CORRESPONDING TRADES ON SITE. THESE ISSUES WILL BE DOCUMENTED AND FORWARDED TO THE APPROPRIATE SALES OFFICE. IF CAS SERVICE HAS TO RESOLVE A DISCREPANCY THAT IS A FIELD ISSUE, THE GENERAL CONTRACTOR WILL BE NOTIFIED AND BILLED FOR THE WORK. SHOULD A RETURN TRIP BE REQUIRED DUE TO ANY FIELD RELATED DISCREPANCY THAT CANNOT BE RESOLVED DURING THE SDV, THERE WILL BE ADDITIONAL TRIP CHARGES.

DURING THE SDV, CAS SERVICE WILL ADDRESS ANY DISCREPANCY THAT IS THE FAULT OF THE MANUFACTURER. SHOULD A RETURN TRIP BE REQUIRED, THE GENERAL CONTRACTOR AND APPROPRIATE SALES OFFICE WILL BE NOTIFIED. THERE WILL BE NO ADDITIONAL CHARGES FOR MANUFACTURER DISCREPANCIES.

**REVISIONS**

DESCRIPTION	DATE
Δ	
Δ	
Δ	
Δ	



**econ·air**  
www.econair.com

**Indiana Office**  
20 E. Airport Rd. Ste. 100, Brownsburg, IN, 46112 PHONE: (317) 852 - 3770 FAX: 9192275929 EMAIL: reg56@econair.com

YWCA USING EXISTING MUA  
Fort Wayne, IN, 46808

**DATE:** 6/6/2024

**DWG.#:**  
6838657

**DRAWN BY:** DCM-56

**SCALE:**  
3/4" = 1'-0"

**MASTER DRAWING**

**SHEET NO.**  
10