



ADDENDUM NO. 1

Project:	Monon Center Indoor Playground	Project Number:	2023-020
		Date Prepared:	19 April 2024
Location:	195 Central Park Dr W. Carmel, IN 46032	Bid Package:	
		Distributed to:	ALL PLAN HOLDERS
Owner:	Carmel Clay Parks and Recreation		

NOTE: The following changes are hereby made to the Contract Documents and insofar as the original Contract Documents are inconsistent therewith, the changes herein shall govern. All bidders shall acknowledge this Addendum by inserting its number and dater on their Bid Proposal.

GENERAL:

1. Prebid Attendance Sign in is Attached
2. Prebid Agenda is Attached
3. Play Structure Preliminary Drawings are attached FOR REFERENCE ONLY
4. MEP Subcontractors may visit site upon coordinating with the owner.
5. The Final Day for questions will be EOD April 25th. Final Addendum will be issues EOD 26th, If necessary.
6. Previous Railing Manufacturer appears to be Bo-Mar.

DRAWINGS:

Listed Items are meant as an overview of changed. Refer to Sheets for complete revisions.

1. E1.1 – Provided clarification on existing symbols.
2. E2.11 – Adjusted lighting controls to remove RGBW controls. Added exit signs. Revised toilet room lighting layout.
3. E2.21 – Revised lighting control conduit location. Added conduit for camera locations.
4. E2.22 – Revised lighting control conduit location.
5. E6.00 – Revised luminaire schedule as shown.

PROJECT MANUAL: No changes

ENCL: Listed

Distribution: Eastern Engineering

Prepared by: SL

End of Addendum



PRE-BID AGENDA

Project:	Monon Center	Project Number:	2023-020
	Indoor Playground	Project Phase:	Bidding
Date / Time:	April 17 2024 / 1PM EST	Date Prepared:	16 April 2024
Location:	Monon Center	Meeting Title:	Pre-Bid Conference
	Multipurpose Room West	<input checked="" type="checkbox"/> MANDATORY	<input type="checkbox"/> VOLUNTARY Attend.

NOTE: This Agenda is an outline of the proposed topics to be discussed. Any corrections or additions shall be communicated to Williams Architects as soon as possible or at the start of the meeting.

EXPECTED ATTENDEES: CCPR, WA, and Prospective Bidders.

DISCUSSION ITEMS:

1. GENERAL

- a. Introductions
- b. Mandatory Attendance clarification
- c. Sign-in Sheet
 - i. Business Cards Optional
 - ii. Distribution of Attendance Sheet
- d. Communications
 - i. Point(s) of Contact at Williams
 - ii. Obtaining Documents
 - iii. Bidders' Requests for Information
 1. Format
 2. Question close Date and Time: EOD April 25th
 - iv. Substitution Request
 1. Format (Section in Project Manual: See Specification)
 2. Substitution Request close Date and Time: April 22nd
 3. Expectations: Provide all data and clarify differences in Specifications.
 - a. Incomplete forms or insufficient information will not be considered.
 4. Unacceptable Forms.
 - v. Addenda
 1. Date and Time of Release: First Addenda April 18th, Final Addenda April 26th
 2. Obtaining Addenda

2. BID DATES AND REQUIREMENTS

- a. When: April 30th. 11:30 AM
- b. Where: Administration Offices
- c. Instructions to Bidders:
 - i. Pre-Qualifications
 - ii. Bid Bond
 - iii. Performance Bond
 - iv. Maintenance Bond
 - v. Insurance
- d. Bid form and Attachments
 - i. Schedule of allowances

ii. References

3. SCHEDULE

- a. Bid Award Date: May 14th
- b. Proposed Construction Start Date: Aug 12th 2024
- c. Proposed Substantial Completion Date: Feb 12th 2025
- d. Proposed Construction Completion Date: March 5th 2025
- e. Intermediate Construction Sequencing Required

4. ALTERNATES

- a. Explain Alternates - None

5. UNIT PRICES

- a. State Unit Prices - None

6. ALLOWANCES

- a. State Allowances and Expectations – 75,000
- b. Allowances shall be recognized on bid form

7. REFERENCES

- a. References defined in Bidder Requirements
- b. Notice: Expectation is that all references listed shall be of the Contractor's latest projects of similar size and scope compared to current project.

8. SITE LIMITATIONS

- a. Review site access/work limitations or restrictions required
- b. Review Area and Time restrictions.

9. PERMITS

- a. Permit Status
- b. Define who obtains permits and sub-permits
- c. Define who pays for permits and sub-permits

10. CONSTRUCTION DOCUMENTS

- a. Abbreviated Scope of Work Description
- b. Abbreviated walk-through of Drawings
- c. Abbreviated Project Manual walk-through

11. FACILITIES

- a. Define Existing conditions
- b. Define Temporary Facility expectations / options.
- c. Define Site office or trailer
- d. Define Use of Site and Work
- e. Define Utilities: Gas, Electric, Phone, Water, etc.

12. OWNER SUPPLIED FIXTURES / LABOR

- a. Define Contractor versus Owner Supplied Equipment / Fixtures / Labor

13. WORK BY OTHERS

- a. Define Bid Packages / Other bids are being taken for coordinating work
- b. State Coordination planning
- c. Define Break in work and coordination requirements and expectations.

14. SPECIAL PROJECT REQUIREMENT

- a. Environmental
- b. Hazardous Material

- c. Asbestos / Lead
- d. LEED or Special Requirements
- e. Other

15. ADDITIONAL COMMENTS AND QUESTIONS

- a. Owner comments
- b. Open Floor Inquiries: General Questions from above content

16. WALKTHROUGH

- a. Site / Facility / Scope Walk-through tour
- b. Comments on Site Specific Items
- c. Open Floor Inquiries: Walk-through related

Distribution: Addenda

Prepared by: SL

End of Pre-Bid Conference Agenda

Document36

Project:	Monon Center Indoor Playground	Project Number:	2023-020
Date:	17 April 2024 / 1 : 00 pm	Location:	Multipurpose Room West
Subject:	Pre-Bid Conference	<input checked="" type="checkbox"/> MANDATORY	<input type="checkbox"/> VOLUNTARY Attendance

[illegible]

document52

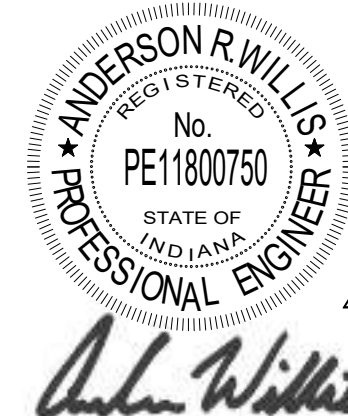


GENERAL SHEET NOTES:
A. REFER TO SHEET E0.0 FOR ELECTRICAL SYMBOLS, ABBREVIATIONS, AND INSTALLATION NOTES.

- KEYNOTES:** #
1. REMOVE AND RETAIN LIGHT FIXTURE FOR REINSTALLATION.
 2. REMOVE AND RETAIN EXISTING CAMERA AND ASSOCIATED WIRING FOR REINSTALLATION.
 3. PROVIDE STAINLESS STEEL BLANK OFF PLATES TO COVER EXISTING BACK BOX.
 4. REMOVE EXISTING HOOD FIRE ALARM CONTROL MODULE.



1 FIRST FLOOR ELECTRICAL DEMOLITION PLAN
1/8" = 1'-0"



4.9.24

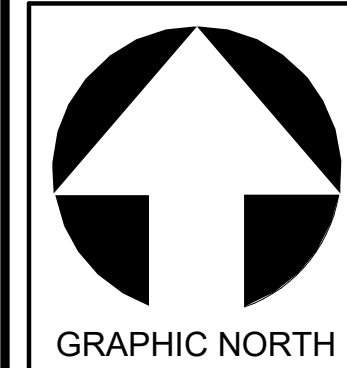
IMEG
8900 KEYSTONE CROSSING
SUITE 210
INDIANAPOLIS, IN 46240
P: 317.848.5045 F: 317.844.2201
www.imegcorp.com
IMEG CORP. RESERVES PROPRIETARY RIGHTS, INCLUDING COPYRIGHTS, TO THIS DRAWING AND THE DATA SHOWN THEREON. SAID DRAWING AND/OR DATA ARE THE EXCLUSIVE PROPERTY OF IMEG CORP. AND SHALL NOT BE USED OR REPRODUCED FOR ANY OTHER PROJECT WITHOUT THE EXPRESS WRITTEN APPROVAL AND PARTICIPATION OF IMEG CORP. ©2024 IMEG CORP.

0 1 2 3
REF. SCALE IN INCHES PROJECT #2306207.00

**MONON CENTER PLAYGROUND
CARMEL CLAY PARKS & REC**
195 Central Park Dr W
Carmel, IN 46032

WA No.	2023-020
Date	4/9/2024
Drawn	SPM
Checked	ARW

NO.	DATE	DESCRIPTION
1	04/18/24	Adendum 1

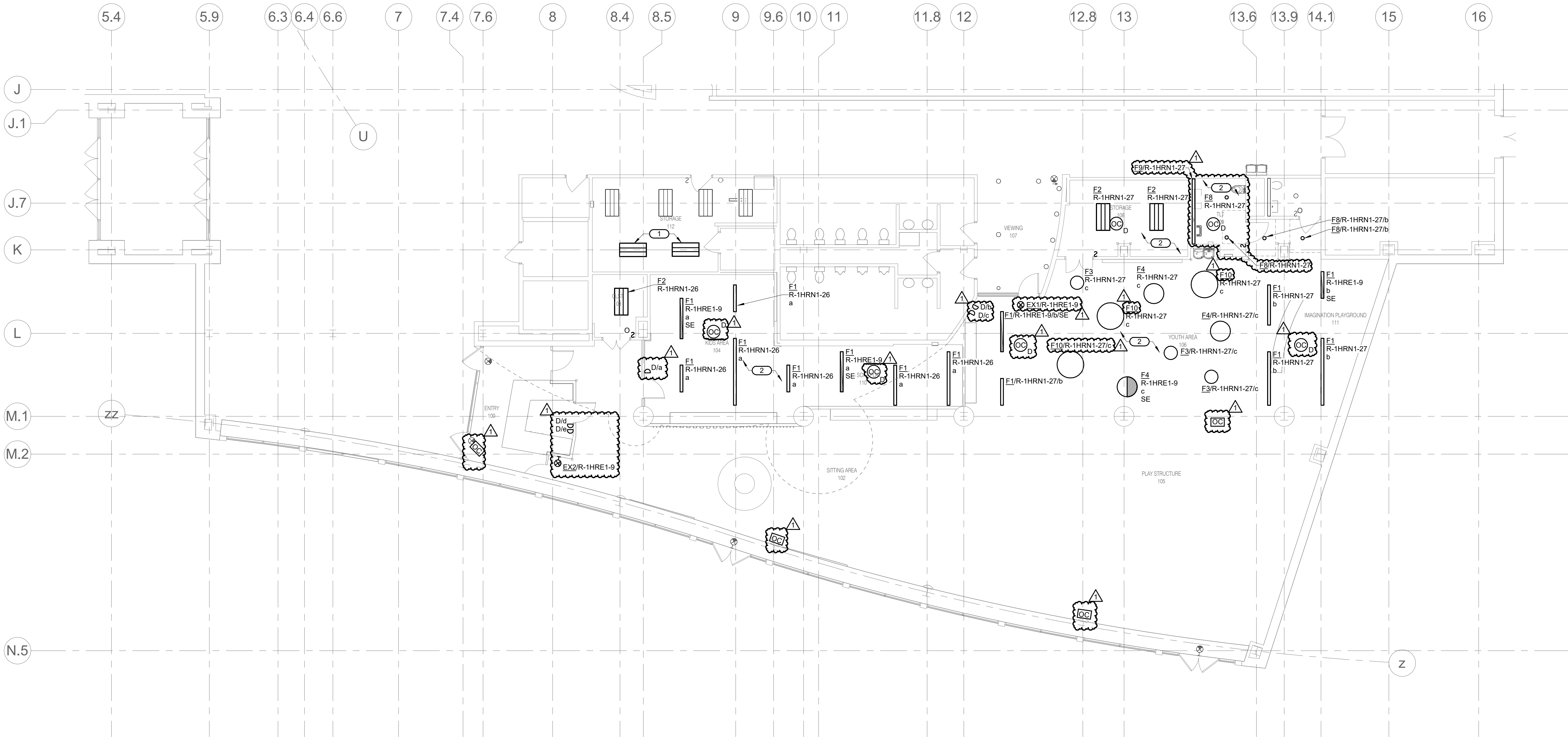


WILLIAMS
ARCHITECTS/AQUATICS
ARCHITECTURE | PLANNING | AQUATICS | INTERIORS
500 Park Boulevard, Suite 800, Itasca, IL 60143
Phone 630-221-1212 / Fax 630-221-1220



FIRST FLOOR
ELECTRICAL
DEMOLITION
PLAN

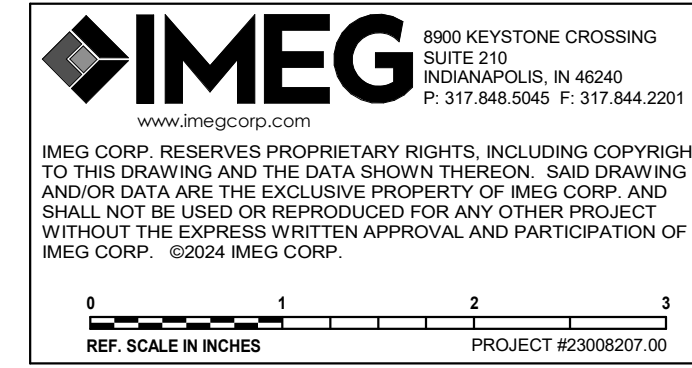
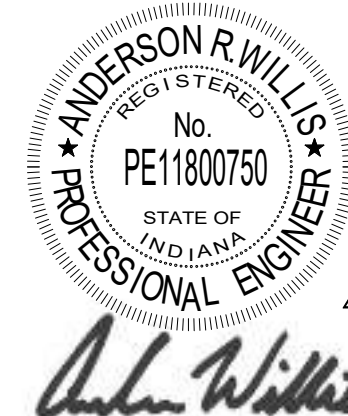
E1.1



1

FIRST FLOOR LIGHTING PLAN

1/8" = 1'-0"



GENERAL SHEET NOTES:

A. REFER TO SHEET E0.0 FOR ELECTRICAL SYMBOLS, ABBREVIATIONS, AND INSTALLATION NOTES.

B. NEW DEVICES SHALL BE INSTALLED FLUSH IN WALL WITH CONDUIT CONCEALED. CUT, PATCH, AND REPAIR WALLS AS REQUIRED TO MATCH ADJACENT CONDITIONS.

KEYNOTES: (#)

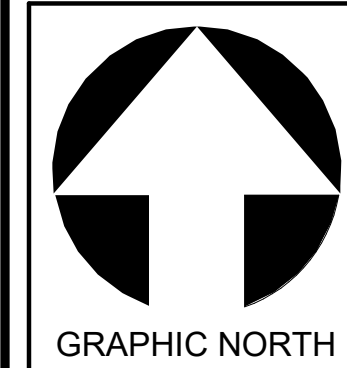
1. REINSTALL FIXTURE IN NEW LOCATION. EXTEND ROOM CIRCUIT R-1HRN1-26 WITH 2#10 & 1#10 GND IN 3/4" C VIA EXISTING LIGHTING CONTROLS.

2. EXTEND EXISTING CIRCUIT AS SHOWN WITH 2#10 & 1#10 GND IN 3/4" C VIA NEW LIGHTING CONTROLS.

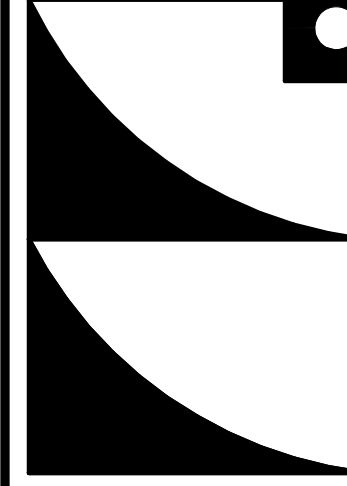
MONON CENTER PLAYGROUND
CARMEL CLAY PARKS & REC
195 Central Park Dr W
Carmel, IN 46032

WA No. 2023-020
Date 4/9/2024
Drawn SPM
Checked ARW

NO.	DATE	DESCRIPTION
1	04/18/24	Addendum 1

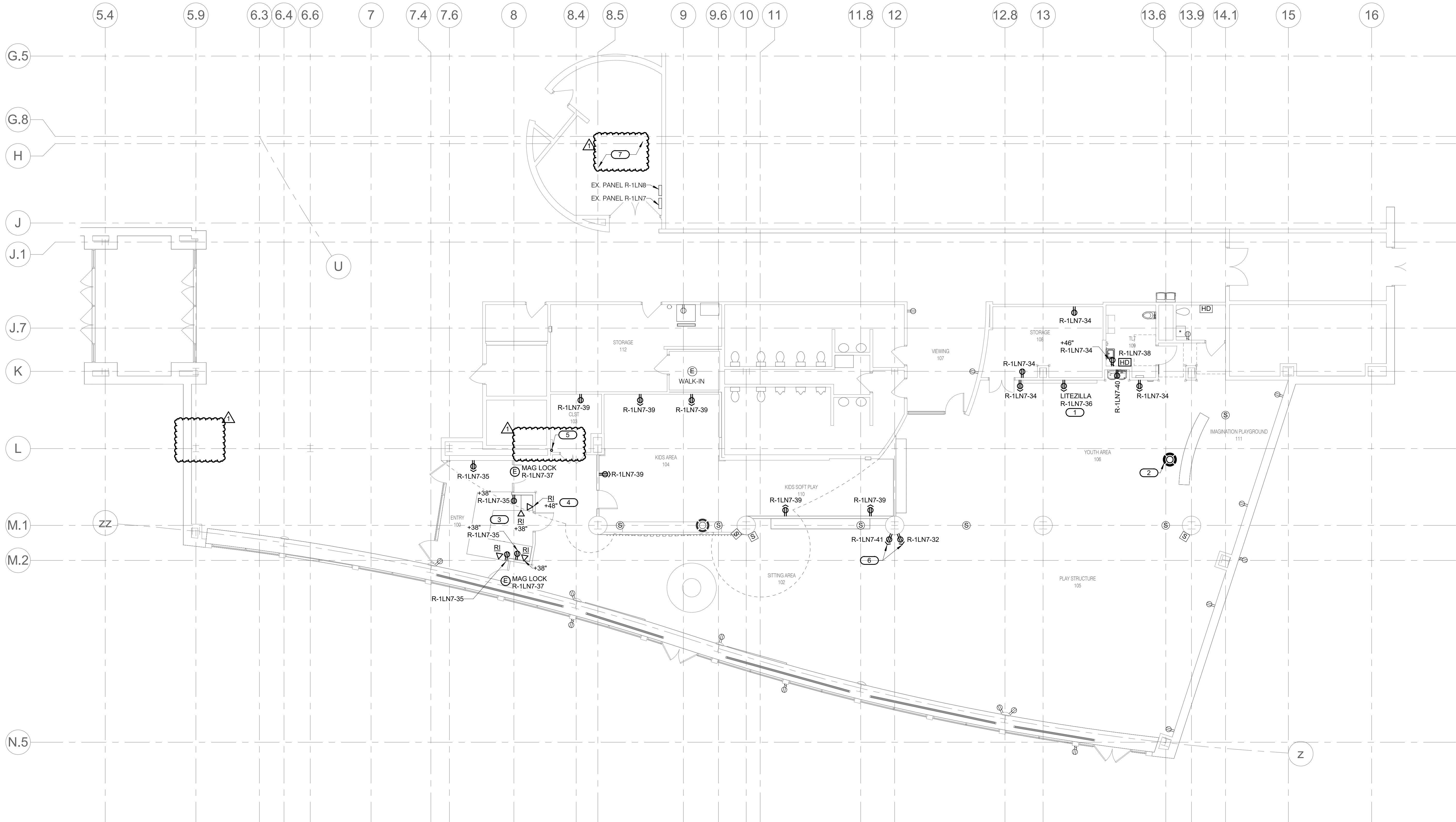


WILLIAMS
ARCHITECTS/AQUATICS
ARCHITECTURE | PLANNING | AQUATICS | INTERIORS
500 Park Boulevard, Suite 800, Itasca, IL 60143
Phone 630-221-1212 / Fax 630-221-1220



FIRST FLOOR
LIGHTING PLAN

E2.11



1

FIRST FLOOR POWER PLAN

1/8" = 1'-0"

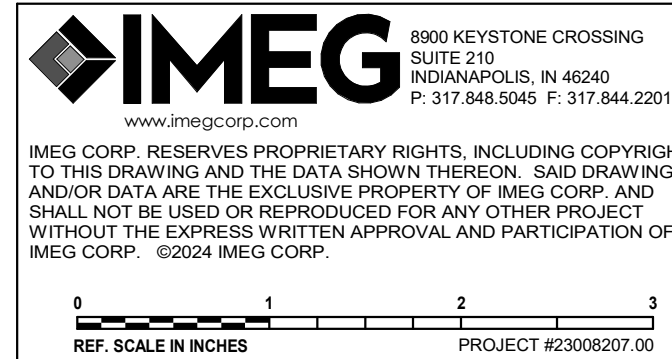
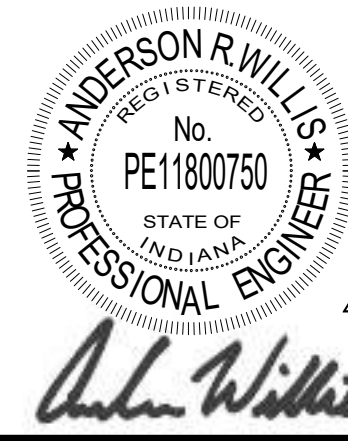
GENERAL SHEET NOTES:

- REFER TO SHEET E0.0 FOR ELECTRICAL SYMBOLS, ABBREVIATIONS, AND INSTALLATION NOTES.
- NEW DEVICES SHALL BE INSTALLED FLUSH IN WALL WITH CONDUIT CONCEALED. CUT, PATCH, AND REPAIR WALLS AS REQUIRED TO MATCH ADJACENT CONDITIONS.

KEYNOTES:

- COORDINATE FINAL LOCATION OF LITEZILLA RECEPTACLE WITH OWNER PRIOR TO ROUGH-IN.
- REINSTALL DEVICE TO NEW LOCATION. EXTEND WIRE AS REQUIRED.
- INSTALL RECEPTACLES AND ROUGH-INS WITHIN CASEWORK. ALL CONDUIT SHALL BE CONCEALED WITHIN CASEWORK. REFER TO ARCHITECTURAL ELEVATIONS FOR ADDITIONAL INFORMATION.
- PLAY STRUCTURE LIGHTING CONTROLLER. PROVIDE 1" CONDUIT FROM ROUGH-IN LOCATION TO CEILING MOUNTED ROUGH-IN LOCATION SHOWN ON SHEET E2.22.
- ROUTE PLAY STRUCTURE LIGHTING CONTROL CONDUIT UP CHASE AS SHOWN. REFER TO SHEET E2.22 FOR CONTINUATION OF CONDUIT ROUTE.
- RECEPTACLE FOR AIR BLOWER MAZE. COORDINATE FINAL LOCATION WITH OWNER PRIOR TO ROUGH-IN.

- PROVIDE 1" CONDUIT FROM THIS ROOM TO FOUR CAMERA LOCATIONS IN THE KIDS ZONE. FINAL LOCATION OF CAMERAS TO BE COORDINATED WITH OWNER.

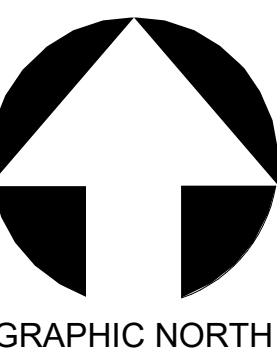


MONON CENTER PLAYGROUND CARMEL CLAY PARKS & REC 195 Central Park Dr W Carmel, IN 46032

WA No. 2023-020
Date 4/9/2024
Drawn SPM
Checked ARW

REVISIONS

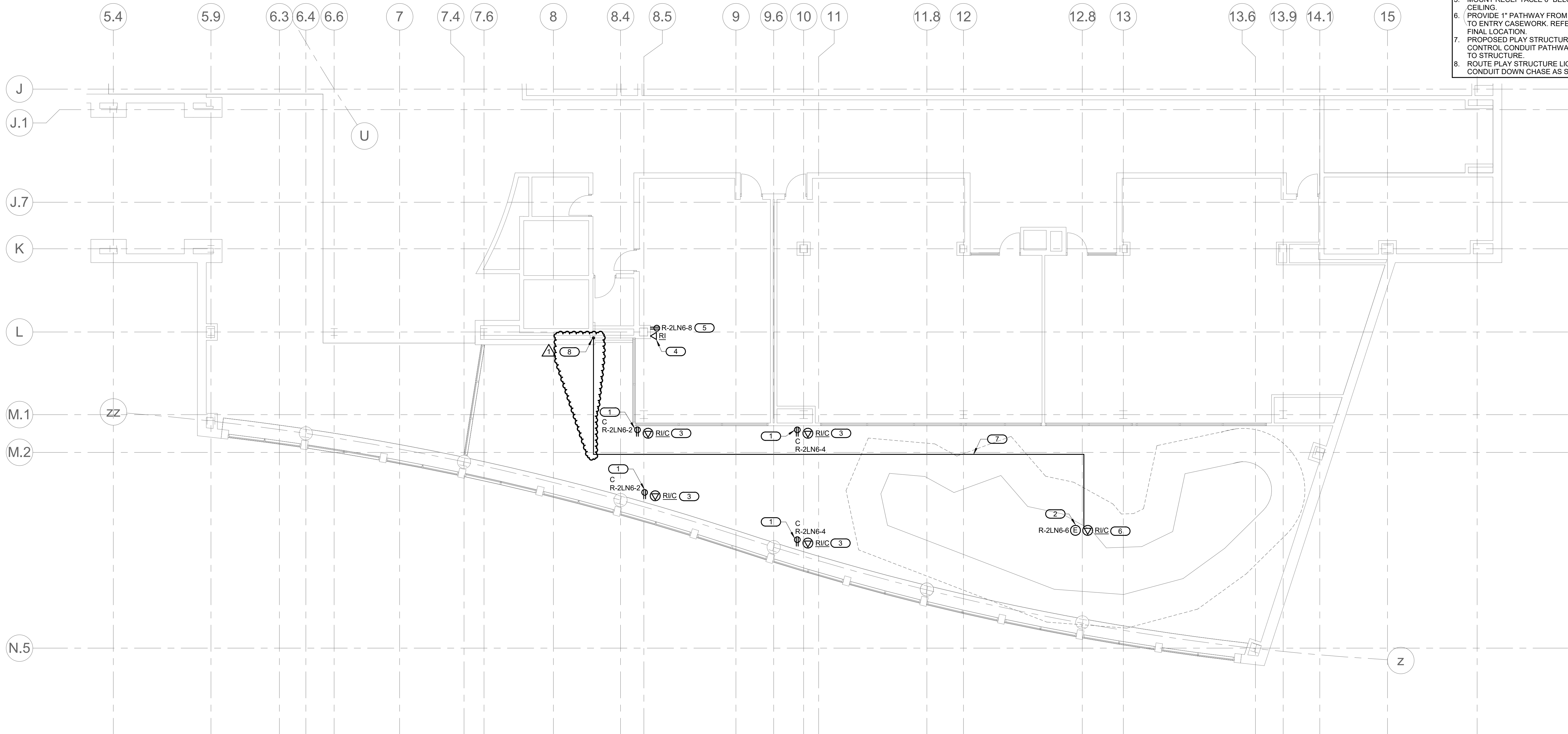
NO.	DATE	DESCRIPTION
1	04/18/24	Adendum 1



WILLIAMS
ARCHITECTS/AQUATICS
ARCHITECTURE | PLANNING | AQUATICS | INTERIORS
500 Park Boulevard, Suite 800, Itasca, IL 60143
Phone 630-221-1212 / Fax 630-221-1220

FIRST FLOOR
POWER PLAN

E2.21



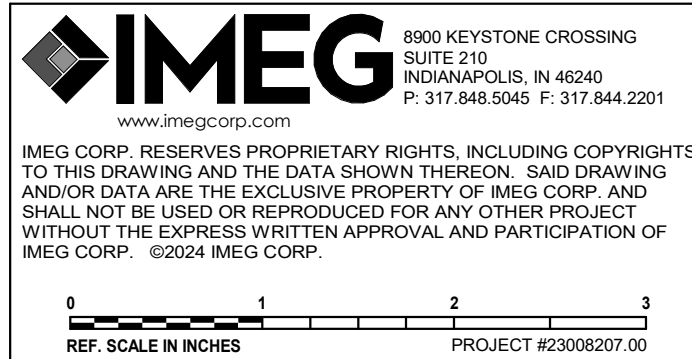
1

SECOND FLOOR POWER PLAN

1/8" = 1'-0"



4.9.24



GENERAL SHEET NOTES:

- REFER TO SHEET E0.0 FOR ELECTRICAL SYMBOLS, ABBREVIATIONS, AND INSTALLATION NOTES.
- NEW DEVICES SHALL BE INSTALLED FLUSH IN WALL WITH CONDUIT CONCEALED. CUT, PATCH, AND REPAIR WALLS AS REQUIRED TO MATCH ADJACENT CONDITIONS.

KEYNOTES:

- CEILING MOUNTED RECEPTACLE FOR TREE PROJECTOR. COORDINATE FINAL LOCATION WITH OWNER PRIOR TO ROUGH-IN.
- POWER FOR INTEGRAL CLIMBER LIGHTING. COORDINATE FINAL CONNECTION LOCATION WITH CLIMBER INSTALLATION.
- CEILING MOUNTED HDMI ROUGH-IN FOR TREE PROJECTOR. PROVIDE 2" CONDUIT FROM HEAD END TO FINAL TREE PROJECTOR LOCATION. TERMINATE IN DEEP BACK BOXES IN BOTH LOCATIONS.
- TREE PROJECTOR HEAD END TO BE MOUNTED ABOVE CEILING. PROVIDE DEEP BACK BOX FOR TERMINATION OF 2" CONDUIT FROM FINAL TREE PROJECTOR LOCATION. MOUNT ROUGH-IN 8" ABOVE ACCESSIBLE CEILING.
- MOUNT RECEPTACLE 6" BELOW ACCESSIBLE CEILING.
- PROVIDE 1" PATHWAY FROM PLAY STRUCTURE TO ENTRY CASEWORK. REFER TO E2.21 FOR FINAL LOCATION.
- PROPOSED PLAY STRUCTURE LIGHTING CONTROL CONDUIT PATHWAY. ROUTE TIGHT TO STRUCTURE.
- ROUTE PLAY STRUCTURE LIGHTING CONTROL CONDUIT DOWN CHASE AS SHOWN.

MONON CENTER PLAYGROUND CARMEL CLAY PARKS & REC 195 Central Park Dr W Carmel, IN 46032

WA No. 2023-020
Date 4/9/2024
Drawn SPM
Checked ARW

REVISIONS

DESCRIPTION

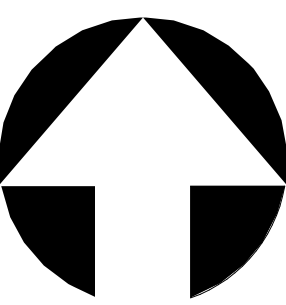
Adendum 1

DATE

04/18/24

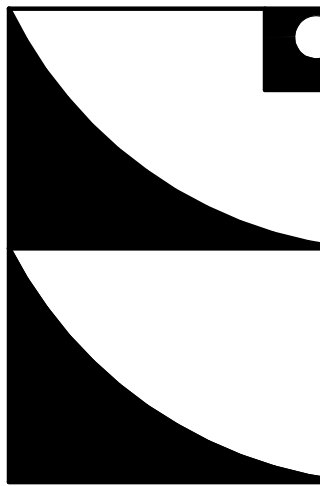
NO.

1



GRAPHIC NORTH

WILLIAMS
ARCHITECTS/AQUATICS
ARCHITECTURE | PLANNING | AQUATICS | INTERIORS
500 Park Boulevard, Suite 800, Itasca, IL 60143
Phone 630-221-1212 / Fax 630-221-1220



SECOND FLOOR
POWER PLAN

E2.22

EX. PANEL R-2LN6																								
MOUNTING: SURFACE					SINGLE TUB SOLID NEUTRAL GROUND BUS					MAIN: 225 A MCB														
ENCLOSURE: NEMA 1										VOLTS: 120/208 Wye														
FED FROM: 0 A/OP @										PHASE: 3														
LOCATION:										WIRE: 4														
										SCCR: 10 kA														
										ISC UNKNOWN 0.00 kA														
NOTES: UNLESS NOTED OTHERWISE, ALL CIRCUITS SHALL HAVE 2#12 & 1#12 GND IN 3/4" C., USE #10 FOR CIRCUIT HOME RUN LENGTHS OVER 75 FEET.																								
KEY	CKT NO.	LOAD DESCRIPTION			OCPD AMPS	P	WIRE SIZE	H	N	G	A	B	C	WIRE SIZE	G	N	H	P	OCPD AMPS	LOAD DESCRIPTION			CKT NO.	KEY
--	1	EXISTING LOAD			20 A	1	--	--	--	--	0 0.36							1	20 A	Receptacles			2	
--	3	EXISTING LOAD			20 A	2	--	--	--	--		0 0.36						1	20 A	Receptacles			4	
--	5				--	--	--	--	--	--			0 0.3					1	20 A	PLAY STRUCTURE LIGHTING			6	
--	7	EXISTING LOAD			20 A	2	--	--	--	--	0 0.18							1	20 A	Receptacles			8	
--	9				--	--	--	--	--	--			0 0					1	20 A	SPARE			10	--
--	11	EXISTING LOAD			20 A	1	--	--	--	--			0 0					1	20 A	SPARE			12	--
--	13	EXISTING LOAD			20 A	1	--	--	--	--	0 0							1	20 A	SPARE			14	--
--	15	EXISTING LOAD			20 A	1	--	--	--	--		0 0						1	20 A	SPARE			16	--
--	17	EXISTING LOAD			20 A	1	--	--	--	--			0 0					1	20 A	SPARE			18	--
--	19	SPARE			20 A	1	--	--	--	--	0 0							1	20 A	SPARE			20	--
--	21	SPARE			20 A	1	--	--	--	--		0 0						1	20 A	SPARE			22	--
--	23	SPARE			20 A	1	--	--	--	--			0 0					1	20 A	SPARE			24	--
--	25	SPARE			20 A	1	--	--	--	--	0 0							1	20 A	SPARE			26	--
--	27	SPARE			20 A	1	--	--	--	--		0 0						1	20 A	EXISTING LOAD			28	--
--	29	SPARE			20 A	1	--	--	--	--			0 0					1	20 A	EXISTING LOAD				

MOUNTING: SURFACE

ENCLOSURE: NEMA 1

FED FROM: 0 A/DP @

LOCATION:

EX. PANEL R-1LN7

SINGLE TUB
SOLID NEUTRAL
GROUND BUS

MAIN: 175 A MCB

VOLTS: 120/208 Wye

PHASE: 3

WIRE: 4

SCCR: 10 kA

ISC UNKNOWN 0.00 kA

NOTES: UNLESS NOTED OTHERWISE, ALL CIRCUITS SHALL HAVE 2#12 & 1#12 GND IN 3/4" C., USE #10 FOR CIRCUIT HOME RUN LENGTHS OVER 75 FEET.


KEY	CKT NO.	LOAD DESCRIPTION	OCPD		WIRE SIZE			A		B		C		WIRE SIZE			OCPD		LOAD DESCRIPTION	CKT NO.	KEY
			AMPS	P	H	N	G						G	N	H	P	AMPS				
--	1	EXISTING LOAD	20 A	1	--	--	--	0	0				--	--	--	1	20 A	SPARE	2	--	
--	3	EXISTING LOAD	20 A	1	--	--	--			0	0		--	--	--	1	20 A	EXISTING LOAD	4	--	
--	5	EXISTING LOAD	20 A	1	--	--	--					0	0	--	--	1	20 A	EXISTING LOAD	6	--	
--	7	EXISTING LOAD	20 A	1	--	--	--	0	0				--	--	--	1	20 A	EXISTING LOAD	8	--	
--	9	EXISTING LOAD	20 A	1	--	--	--			0	0		--	--	--	1	20 A	EXISTING LOAD	10	--	
--	11	EXISTING LOAD	20 A	1	--	--	--					0	0	--	--	1	20 A	EXISTING LOAD	12	--	
--	13	EXISTING LOAD	20 A	1	--	--	--	0	0			0	0	--	--	1	20 A	EXISTING LOAD	14	--	
--	15	EXISTING LOAD	20 A	1	--	--	--			0	0			--	--	1	20 A	EXISTING LOAD	16	--	
--	17	EXISTING LOAD	20 A	1	--	--	--					0	0	--	--	1	20 A	EXISTING LOAD	18	--	
--	19	EXISTING LOAD	20 A	2	--	--	--	0	0					--	--	1	20 A	EXISTING LOAD	20	--	
--	21		--	--	--	--	--			0	0			--	--	1	20 A	EXISTING LOAD	22	--	
--	23	EXISTING LOAD	20 A	2	--	--	--					0	0	--	--	1	20 A	EXISTING LOAD	24	--	
--	25		--	--	--	--	--	0	0					--	--	1	20 A	EXISTING LOAD	26	--	
--	27	EXISTING LOAD	20 A	2	--	--	--			0	0			--	--	1	20 A	SPARE	28	--	
--	29		--	--	--	--	--					0	0	--	--	1	20 A	EXISTING LOAD	30	--	
--	31	EXISTING LOAD	20 A	2	--	--	--	0	0.18					--	--	1	20 A	Receptacles	32	--	
--	33		--	--	--	--	--			0	0.9			--	--	1	20 A	Receptacles	34	--	
--	35	Receptacles	20 A	1								0.72	0	--	--	1	20 A	Receptacles	36	--	
--	37	MAG LOCK	20 A	1				0.4	1.7					--	--	1	20 A	HAND DRYER	38	G	
--	39	Receptacles	20 A	1						1.08	0.18			--	--	1	20 A	EWG	40	G	
--	41	Receptacles	20 A	1								0.18	0	--	--	1	20 A	SPARE	42	--	
			Total Load:		2.28 kVA		2.16 kVA		0.90 kVA												
			Total Amps:		20.62		19.62		7.50												
LOAD SUMMARY																					
LOAD CLASSIFICATION			CONNECTED LOAD		DEMAND FACTOR																

LED LUMINAIRE SCHEDULE																
(DESC) DOOR:		DISTRIBUTION:		BEAMWIDTH:		(L/L) LENS/LOUVER:										
FA - FLAT ALUMINUM FS - FLAT STEEL RA - REGRESSED ALUMINUM RS - REGRESSED STEEL FINISH: PAF - PAINT AFTER FABRICATION CFSA - COLOR-FINISH SELECTION BY ARCHITECT		II - ANSI/IES TYPE 2 DISTRIBUTION III - ANSI/IES TYPE 3 DISTRIBUTION IV - ANSI/IES TYPE 4 DISTRIBUTION V - ANSI/IES TYPE 5 DISTRIBUTION		NSP - VERY NARROW SPOT SP - SPOT MD - MEDIUM WD - WIDE VWD - VERY WIDE WW - WALL WASH		A - .125" ACRYLIC B - BAFFLE/LOUVER C - CLEAR ALZAK F - FROSTED ACRYLIC G - TEMPERED GLASS K - KSH12 .125" ACRYLIC		K19 - KSH19 .156" ACRYLIC M - MATTE DIFFUSE CLEAR N - NONE P - POLYCARBONATE R - HIGH IMPACT DR ACRYLIC SS - SEMI-SPECULAR CLEAR O - OTHER (SEE DESCRIPTION) [DESIGN SPECIFIC BLANKS]								
(MTG) MOUNTING:		RE - RECESSED SP - SUSPENDED SU - SURFACE UC - UNDER CABINET WL - WALL O - OTHER (SEE DESCRIPTION)		(WATT) PER:		FIX - FIXTURE, FT - FOOT, LAMP										
CL - CEILING SURFACE CV - COVE FR - FLANGED RECESSED P - PERIMETER PL - POLE						(TYPE) LED LED - LIGHT EMITTING DIODE TLED - TUBULAR LED LAMP OLED - ORGANIC LED DLED - DYNAMIC TUNABLE LED		RGB - COLOR CHANGING LED RGBW - COLOR CHANGING + WHITE RGBA - COLOR CHANGING + AMBER RLED - RETROFIT LED WLED - WARM DIM LED								
(TYPE) DRIVER:		0-10V - 0-10V DIMMING DALI - DIGITAL ADDRESSABLE DMX - DIGITAL MULTIPLEX		EB - ELECTRONIC ELV - ELECTRONIC LOW VOLTAGE EM - EMERGENCY BATTERY		HL - HIGH/LOW (100%/50%) STEP DIM LINE - LINE VOLTAGE DIMMING ML - MULTI-LEVEL SWITCHING		MV - MULTI-VOLTAGE ELECTRONIC REM - REMOTE O - OTHER (SEE DESCRIPTION)								
CATALOG NUMBER SHALL NOT BE CONSIDERED COMPLETE AND MATERIAL SHALL NOT BE ORDERED BY MANUFACTURER AND CATALOG NUMBER ONLY. THE COMPLETE DESCRIPTION AND THE SPECIFICATION SHALL BE COORDINATED WITH THE CATALOG NUMBER TO DETERMINE THE EXACT MATERIAL AND ACCESSORIES TO BE ORDERED. THE FIRST MANUFACTURER LISTED IS THE BASIS OF DESIGN.																
VERIFY AND COORDINATE ALL CEILING TYPES WITH LUMINAIRE MOUNTING AND TRIM REQUIREMENTS PRIOR TO THE RELEASE OF THE LUMINAIRE ORDER. CONFIRM ALL COLORS AND FINISHES OF ALL LUMINAIRE COMPONENTS WITH ARCHITECT AND INTERIOR DESIGNER PRIOR TO THE RELEASE OF THE LUMINAIRE ORDER. UNLESS INDICATED ON LIGHTING PLANS OR BELOW, REFER TO ARCHITECTURAL AND INTERIOR DESIGN ELEVATIONS, SECTIONS AND DETAILS FOR ALL SUSPENDED AND WALL MOUNTED LUMINAIRE MOUNTING HEIGHTS.																
REFER TO SPECIFICATION SECTIONS LED LIGHTING 26 51 19 FOR ADDITIONAL INFORMATION AND REQUIREMENTS. INTERIOR CORRELATED COLOR TEMPERATURE 3500K, COLOR RENDERING INDEX (CRI) AT OR ABOVE 80, UNLESS NOTED OTHERWISE. ALL DRIVERS SHALL BE 1% DIMMING.																
						DIMENSIONS		WATT		LED		DRIVER				
ITEM	DESCRIPTION	L/L	MTG	L	W	H	DIA.	ANSI WATTS	PER	TYPE	QTY	DELIVERED LUMENS (MIN)	VOLTS	TYPE	MANUFACTURER AND MODEL	
EX1	SINGLE-FACE EXIT SIGN WITH BRUSHED ALUMINUM HOUSING AND RED LETTERS.	O	CL	1'-1"	2"	9"		0 W	FIX	LED	1	LUMENS	277 V	EM	LITHONIA LQC OR APPROVED EQUAL	
EX2	SINGLE-FACE EXIT SIGN WITH BRUSHED ALUMINUM HOUSING AND RED LETTERS.	O	WL	1'-1"	2"	9"		0 W	FIX	LED	1	LED	277 V	EM	LITHONIA LQC OR APPROVED EQUAL	
F1	LINEAR RECESSED LIGHT FIXTURE WITH EXTRUDED ALUMINUM HOUSING. LENGTH AS SHOWN ON DRAWINGS.	F		<varies>	5"	2"		5 W	FT	LED	1	873 LUM/F	277 V	0-10V	FOCAL POINT SEEM 4 OR APPROVED EQUAL	
F2	RECESSED CENTER LENSED TROFFER WITH SMOOTH ACRYLIC LENS.	F	RE	4'-0"	2'-0"	5 1/2"		40 W	FIX	LED	1	4000	277 V	0-10V	LITHONIA 2BLT4 OR APPROVED EQUAL	
F3	DECORATIVE PENDANT WITH MOLDED SINGLE PIECE DIFFUSER WITH OUTER TRIM. PENDANT MOUNTING TO BE 4 VERTICAL AIRCRAFT CABLES WITH POWER CORD TO CANOPY. FINISH SELECTION BY ARCHITECT FROM STANDARD FINISHES. PROVIDE FIXTURE WITH 48" OAH. PROVIDE FIXTURE WITH CENTER ETCHED ACOUSTIC PANEL. MOUNT REMOTE DRIVER ABOVE ACCESSIBLE CEILING.	O	SP/CL			6"	2'-0"	55 W	FIX	LED	1	5115	277 V	0-10V	OCL GLOWRING GL2-P1EM-24 OR APPROVED EQUAL	
F4	DECORATIVE PENDANT WITH MOLDED SINGLE PIECE DIFFUSER WITH OUTER TRIM. PENDANT MOUNTING TO BE 4 VERTICAL AIRCRAFT CABLES WITH POWER CORD TO CANOPY. FINISH SELECTION BY ARCHITECT FROM STANDARD FINISHES. PROVIDE FIXTURE WITH 48" OAH. PROVIDE FIXTURE WITH CENTER ETCHED ACOUSTIC PANEL. MOUNT REMOTE DRIVER ABOVE ACCESSIBLE CEILING.	O	SP/CL			6"	3'-0"	85 W	FIX	LED	1	7905	277 V	0-10V	OCL GLOWRING GL2-P1EM-36 OR APPROVED EQUAL	
F5	DECORATIVE PENDANT WITH MOLDED SINGLE PIECE DIFFUSER. PENDANT MOUNTING TO BE 3 ANGLED AIRCRAFT CABLES WITH POWER CORD TO CANOPY. FINISH SELECTION BY ARCHITECT FROM STANDARD FINISHES. PROVIDE FIXTURE WITH 100" OAH. PROVIDE FIXTURE WITH CENTER ETCHED ACOUSTIC PANEL.	O	SP/CL			6"	4'-0"	75 W	FIX	LED	1	7875	277 V	0-10V	OCL LOOP LO1-P1EC-48 OR APPROVED EQUAL	
F6	DECORATIVE PENDANT WITH MOLDED SINGLE PIECE DIFFUSER. PENDANT MOUNTING TO BE 3 ANGLED AIRCRAFT CABLES WITH POWER CORD TO CANOPY. FINISH SELECTION BY ARCHITECT FROM STANDARD FINISHES. PROVIDE FIXTURE WITH 100" OAH. PROVIDE FIXTURE WITH CENTER ETCHED ACOUSTIC PANEL.	O	SP/CL			6"	6'-0"	115 W	FIX	LED	1	12075	277 V	0-10V	OCL LOOP LO1-P1EC-72 OR APPROVED EQUAL	
F7	LARGE INDOOR CEILING FLOOD LIGHT. CUSTOM COLOR FINISH SELECTED BY ARCHITECT. PROVIDE FIXTURE WITH CUTOFF VISOR.	A	WL	1'-0"	10"	10 1/2"		51 W	FIX	LED	1	5400	277 V	0-10V	ELLIPTIPAR S124-H-12-E OR APPROVED EQUAL	
F8	LENSED RECESSED DOWNLIGHT, CLEAR SPECULAR PARABOLIC SELF TRIMMING REFLECTOR, DAMP LABEL. WIDE DISTRIBUTION.	O	RE		9 1/2"	6"		24 W	FIX	LED	1	2000	277 V	0-10V	GOTHAM EVO 6 OR APPROVED EQUAL	
F9	LINEAR LED RECESSED PERIMETER SYMMETRIC DISTRIBUTION FIXTURE WITH EXTRUDED ALUMINUM HOUSING. FLUSH FROSTED ACRYLIC LENS. LENGTH AS SHOWN ON DRAWING.	O	RE	9'-9"	5"	2"		5 W	FT	LED	1	250 LUM/FT	277 V	0-10V	LUMENWERX VIA PERIMETER 5 FINELITE LIGHTING PRUDENTIAL LIGHTING	
F10	DECORATIVE PENDANT WITH MOLDED SINGLE PIECE DIFFUSER WITH OUTER TRIM. PENDANT MOUNTING TO BE 4 VERTICAL AIRCRAFT CABLES WITH POWER CORD TO CANOPY. FINISH SELECTION BY ARCHITECT FROM STANDARD FINISHES. PROVIDE FIXTURE WITH 48" OAH. PROVIDE FIXTURE WITH CENTER ETCHED ACOUSTIC PANEL. MOUNT REMOTE DRIVER ABOVE ACCESSIBLE CEILING.	O	SP/CL			6"	4'-0"	75 W	FIX	LED	1	7875	277 V	0-10V	OCL GLOWRING GL2-P1EM-48 OR APPROVED EQUAL	

MONON CENTER PLAYGROUND
CARMEL CLAY PARKS & REC
195 Central Park Dr W
Carmel, IN 46032

WA No. 2023-020
Date 4/9/2024
Drawn SPM
Checked ARW

REVISIONS		
NO.	DATE	DESCRIPTION
1	04/18/24	Addendum 1



GRAPHIC NORTH

WILLIAMS
ARCHITECTS/AQUATICS
ARCHITECTURE | PLANNING | AQUATICS | INTERIORS
5500 Park Boulevard, Suite 800, Itasca, IL 60143

ELECTRICAL SCHEDULES

E6.0

4.9.2

IMEG 8900 KEYSTONE CROSSING
SUITE 210
INDIANAPOLIS, IN 46240
P. 317.848.5045 F. 317.844.2201
www.imegcorp.com

IMEG CORP. RESERVES PROPRIETARY RIGHTS, INCLUDING COPYRIGHT, TO THIS DRAWING AND THE DATA SHOWN THEREIN. SAVED DRAWING AND/OR DATA ARE THE EXCLUSIVE PROPERTY OF IMEG CORP. AND SHALL NOT BE USED OR REPRODUCED FOR ANY OTHER PROJECT WITHOUT THE EXPRESS WRITTEN APPROVAL AND PARTICIPATION OF IMEG CORP. ©2024 IMEG CORP.

0 1 2 3
REF. SCALE IN INCHES PROJECT #23080207.00

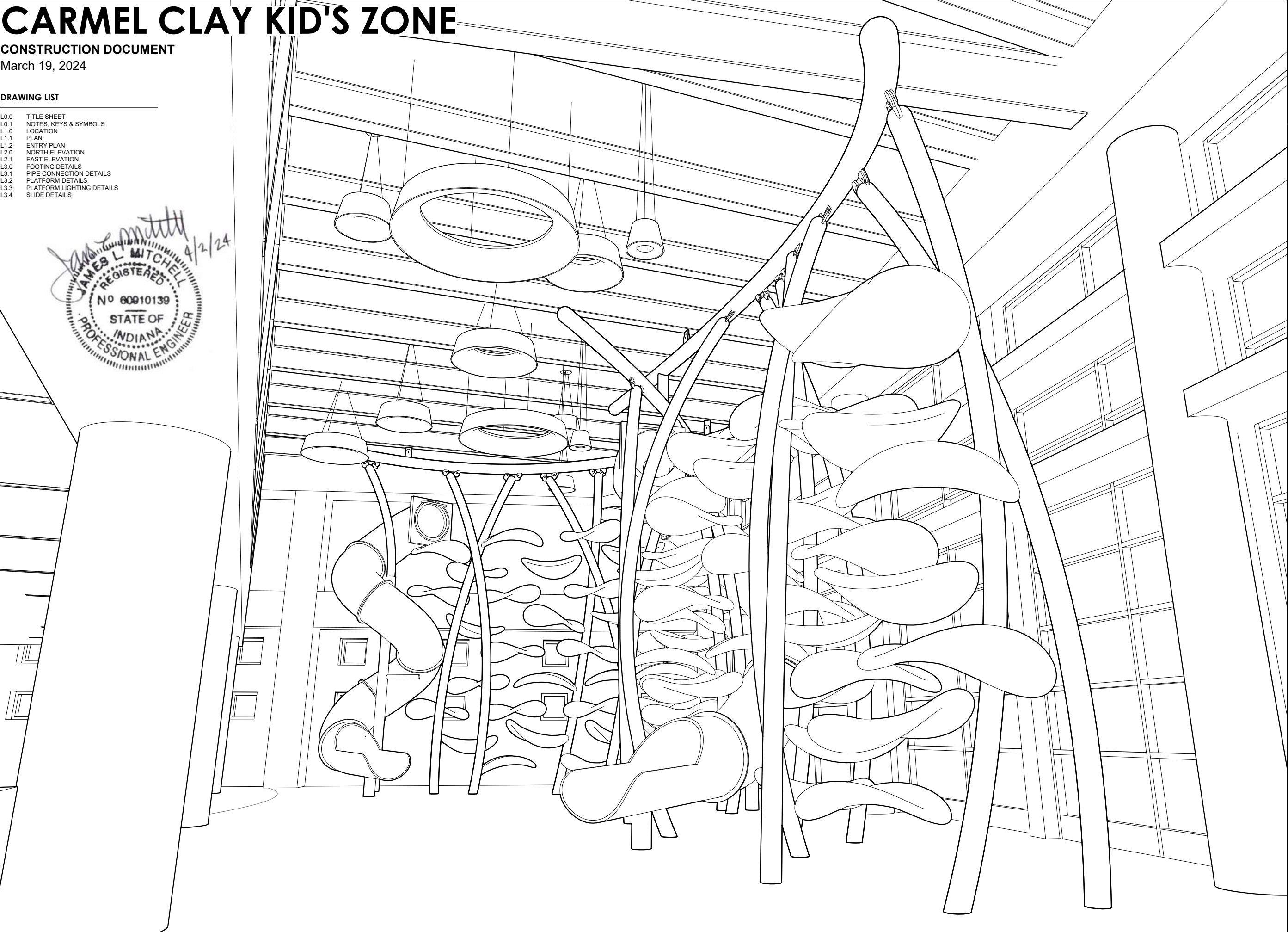
CARMEL CLAY KID'S ZONE

CONSTRUCTION DOCUMENT

March 19, 2024

DRAWING LIST

- L0.0 TITLE SHEET
- L0.1 NOTES, KEYS & SYMBOLS
- L1.0 LOCATION
- L1.1 PLAN
- L1.2 ENTRY PLAN
- L2.0 NORTH ELEVATION
- L2.1 EAST ELEVATION
- L3.0 FOOTING DETAILS
- L3.1 PIPE CONNECTION DETAILS
- L3.2 PLATFORM DETAILS
- L3.3 PLATFORM LIGHTING DETAILS
- L3.4 SLIDE DETAILS



DESIGNER
LUCKEY LLC
300 EAST STREET
NEW HAVEN, CT 06511
T: 475-441-7468

CONSULTING ENGINEER
JAMES L. MITCHELL
STRUCTURAL ENGINEER
220 CHERRY LAUREL LANE
KYLE, TX 78640

CLIENT
CARMEL CLAY PARKS & RECREATION
1235 CENTRAL PARK DR E
CARMEL, IN 46032

PROJECT
CARMEL CLAY KID'S ZONE



DISCLAIMER
The drawings, specifications, ideas, designs and arrangements presented thereby are and shall remain in the property of Luckey LLC. No part thereof shall be copied, disclosed to others or used in connection with any work or project other than the specific project for which they have been prepared, or reviewed without the written consent of Luckey LLC.

ISSUE
CONSTRUCTION DOCUMENT

DATE
3/19/2024

DRAWN BY
AMELIA CARLSON

SCALE
AS NOTED

DATE
3/19/2024

SHEET TITLE
TITLE SHEET


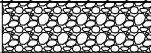


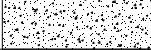
SHEET NUMBER

L0.0 (1 / 12)

GENERAL NOTES


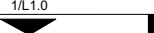


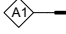
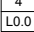
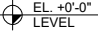
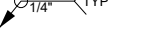
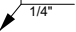
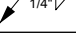
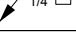
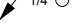
1. DRAWINGS TO BE READ IN CONJUNCTION W/ ALL RELEVANT CURRENT AND EXISTING ENGINEERING AND ARCHITECTURAL DRAWINGS.
2. DIMENSIONS SHALL GOVERN. DO NOT SCALE DRAWINGS. NOTIFY LUCKEY LLC IN WRITING OF ANY DISCREPANCIES, OMISSIONS AND/OR CONFLICTS BEFORE PROCEEDING WITH THE WORK.
3. WHERE SPECIFIC DIMENSIONS, DETAILS AND DESIGN INTENT CANNOT BE DETERMINED, CONSULT LUCKEY LLC IN WRITING BEFORE PROCEEDING WITH THE WORK IN THIS AREA.
4. DRAWINGS SHALL NOT BE USED AS SHOP DRAWINGS. ALL DIMENSIONS SHALL BE VERIFIED BY FABRICATOR.
5. DETAILS SHOWN ARE INTENDED TO BE INDICATIVE OF THE PROFILES AND TYPE OF DETAILING REQUIRED FOR THE WORK. DETAILS NOT SHOWN ARE SIMILAR IN CHARACTER AND QUALITY TO THOSE DETAILED.
6. ALL DIMENSIONS SHALL BE VERIFIED ON SITE BY A LICENSED SURVEYOR.
7. LOADING ASSUMPTIONS: CLIMBING PLATFORM LIVE LOAD = 30 PSF
8. WELDS: ALL WELDS NOT REFERENCED ON DRAWINGS SHALL BE MINIMUM OF 3/16" FILLET ALL AROUND W/ 70XX ELECTRODES
9. APPLICABLE CODES: PUBLIC PLAYGROUND SAFETY HANDBOOK

INDEX	SPECIFICATION TYPE	SPECIFICATION DESCRIPTION
S1	CONCRETE SPECIFICATION	FOUNDATION CONCRETE SHALL BE COMPOSED OF 4,000 PSI NORMAL WEIGHT CONCRETE, WITH A MINIMUM 500 LBS PORTLAND CEMENT PER CUBIC YARD IN THE MIX DESIGN. SLUMP AT THE POINT OF PLACEMENT TO BE 4" - 6" WITH A MAXIMUM WATER CEMENT RATIO OF 0.48.
S2	REBAR SPECIFICATION	ALL FOUNDATION REINFORCEMENT TO BE GRADE 60 DEFORMED BAR REINFORCEMENT, PLAIN.
S3	GEOTECHNICAL REQUIREMENTS	FOUNDATION TO BEAR UPON COMPACTED NATURAL SOILS AND STONE SUB-BASE AS INDICATED TO SAFELY PROVIDE 2000 PSF ALLOWABLE SOIL BEARING.

MATERIAL	DESCRIPTION
	WOOD
	GRAVEL
	STEEL
	COMPACT FILL
	CONCRETE

MATERIALS LEGEND

2

SYMBOL	DESCRIPTION
	NORTH ARROW
	SECTION KEY/FLAG
	ELEVATION KEY
	ENTRY KEY
	PIPE TAG
	DETAIL KEY
	ELEVATION MARKER
	WELD ALL AROUND
	FIELD WELD
	FILLET WELD
	PLUG WELD
	SPOT OR PROJECTION WELD

KEYS & SYMBOLS

1

LUCKEY

DESIGNER

LUCKEY LLC
300 EAST STREET
NEW HAVEN, CT 06511
T: 475-441-7468

CONSULTING ENGINEER

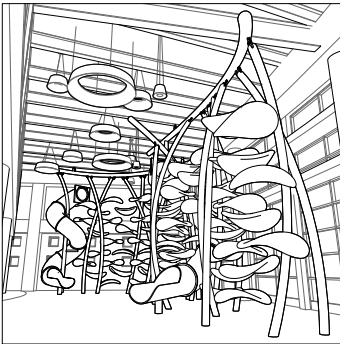
JAMES L. MITCHELL
STRUCTURAL ENGINEER
220 CHERRY LAUREL LANE
KYLE, TX 78640

CLIENT

CARMEL CLAY PARKS & RECREATION
1235 CENTRAL PARK DR E
CARMEL, IN 46032

PROJECT

CARMEL CLAY KID'S ZONE



DISCLAIMER

The drawings, specifications, ideas, designs and arrangements presented thereby are and shall remain in the property of Luckey LLC. No part thereof shall be copied, disclosed to others or used in connection with any work or project other than the specific project for which they have been prepared, or reviewed without the written consent of Luckey LLC.

ISSUE

CONSTRUCTION DOCUMENT

DATE

3/19/2024

DRAWN BY

AMELIA CARLSON

SCALE

AS NOTED

DATE

3/19/2024

SHEET TITLE

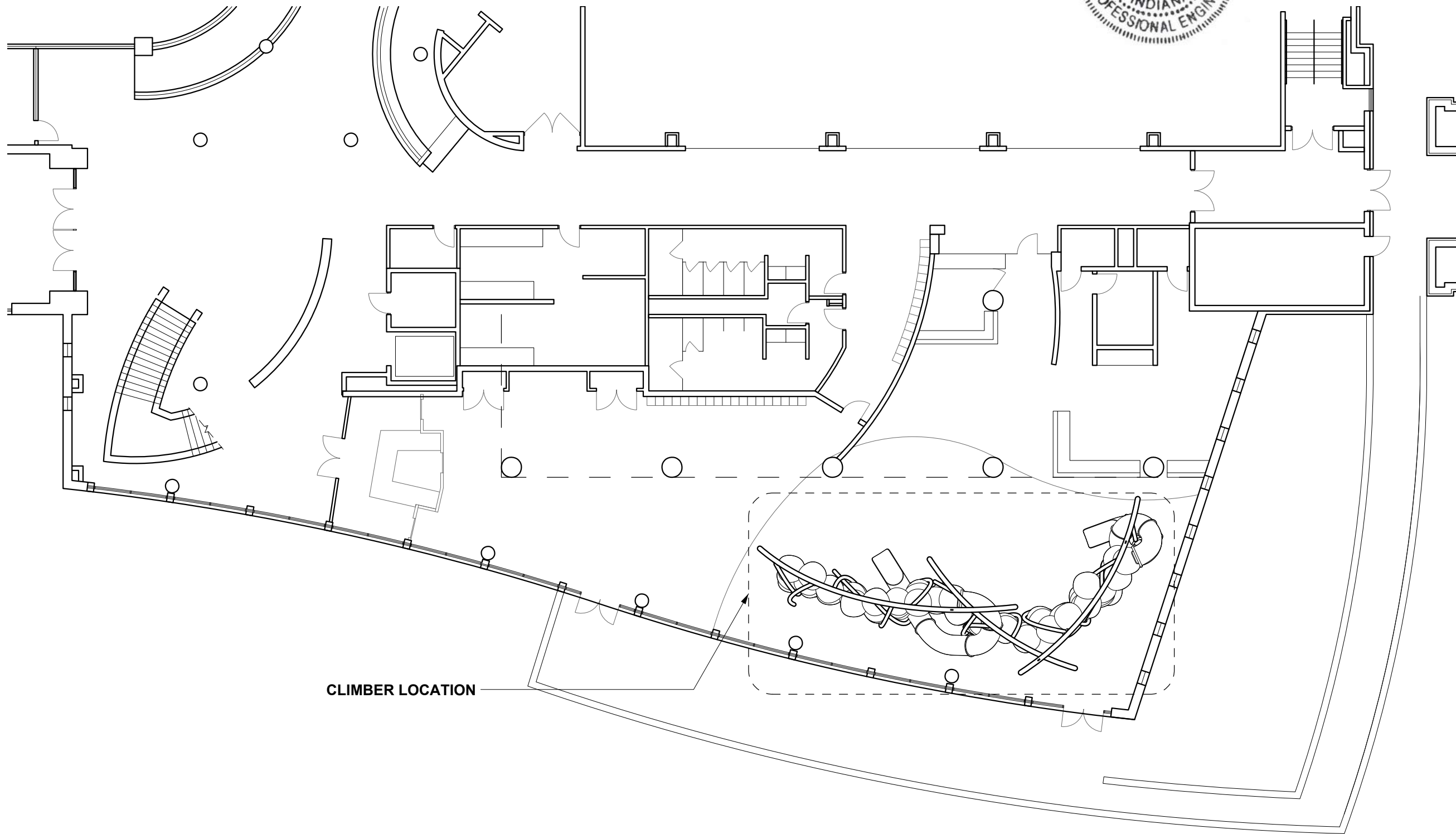
NOTES, KEYS & SYMBOLS

SHEET NUMBER

L0.1

(2 / 12)





CLIMBER LOCATION

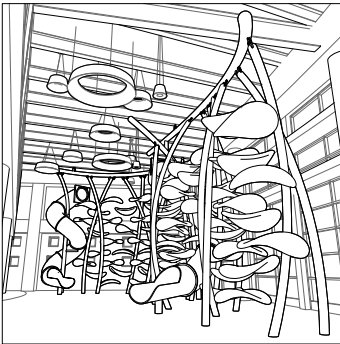
CLIMBER LOCATION 1 N
SCALE: 1/16" = 1'-0"

DESIGNER
LUCKEY LLC
300 EAST STREET
NEW HAVEN, CT 06511
T: 475-441-7468

CONSULTING ENGINEER
JAMES L. MITCHELL
STRUCTURAL ENGINEER
220 CHERRY LAUREL LANE
KYLE, TX 78640

CLIENT
CARMEL CLAY PARKS & RECREATION
1235 CENTRAL PARK DR E
CARMEL, IN 46032

PROJECT
CARMEL CLAY KID'S ZONE



DISCLAIMER
The drawings, specifications, ideas, designs and arrangements presented thereby are and shall remain in the property of Luckey LLC. No part thereof shall be copied, disclosed to others or used in connection with any work or project other than the specific project for which they have been prepared, or reviewed without the written consent of Luckey LLC.

ISSUE
CONSTRUCTION DOCUMENT

DATE
3/19/2024

DRAWN BY
AMELIA CARLSON

SCALE
AS NOTED

DATE
3/19/2024

SHEET TITLE
CLIMBER LOCATION PLAN

SHEET NUMBER

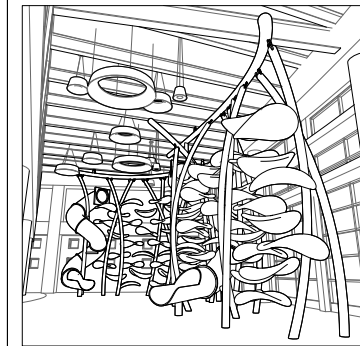
L1.0 (3 / 12)

DESIGNER
LUCKEY LLC
300 EAST STREET
NEW HAVEN, CT 06511
T: 475-441-7468

CONSULTING ENGINEER
JAMES L. MITCHELL
STRUCTURAL ENGINEER
220 CHERRY LAUREL LANE
KYLE, TX 78640

CLIENT
CARMEL CLAY PARKS & RECREATION
1235 CENTRAL PARK DR E
CARMEL, IN 46032

PROJECT
CARMEL CLAY KID'S ZONE



DISCLAIMER
The drawings, specifications, ideas, designs and arrangements presented thereby are and shall remain in the property of Luckey LLC. No part thereof shall be copied, disclosed to others or used in connection with any work or project other than the specific project for which they have been prepared, or reviewed without the written consent of Luckey LLC.

ISSUE
CONSTRUCTION DOCUMENT

DATE
3/19/2024

DRAWN BY
AMELIA CARLSON

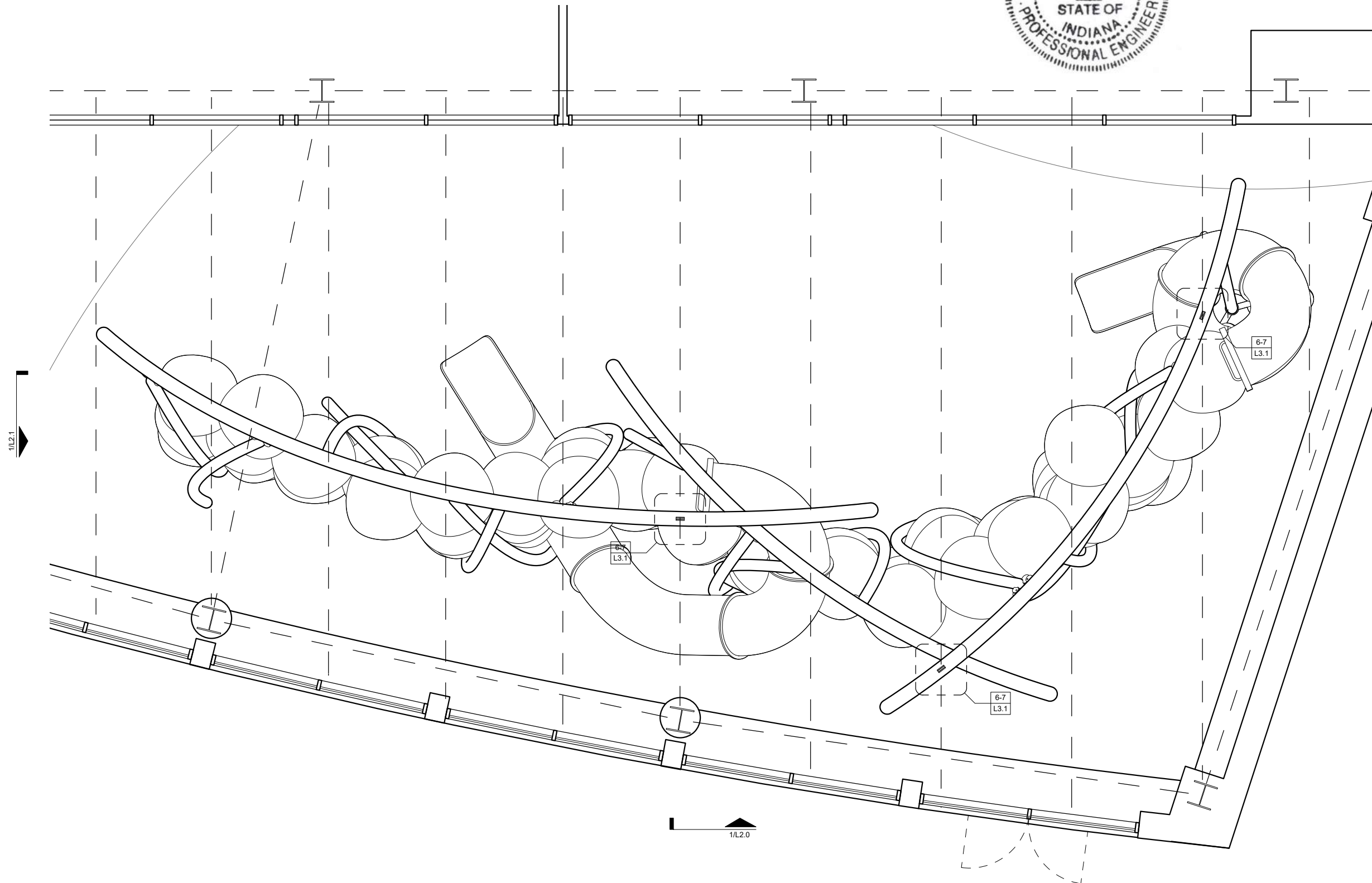
SCALE
AS NOTED

DATE
3/19/2024

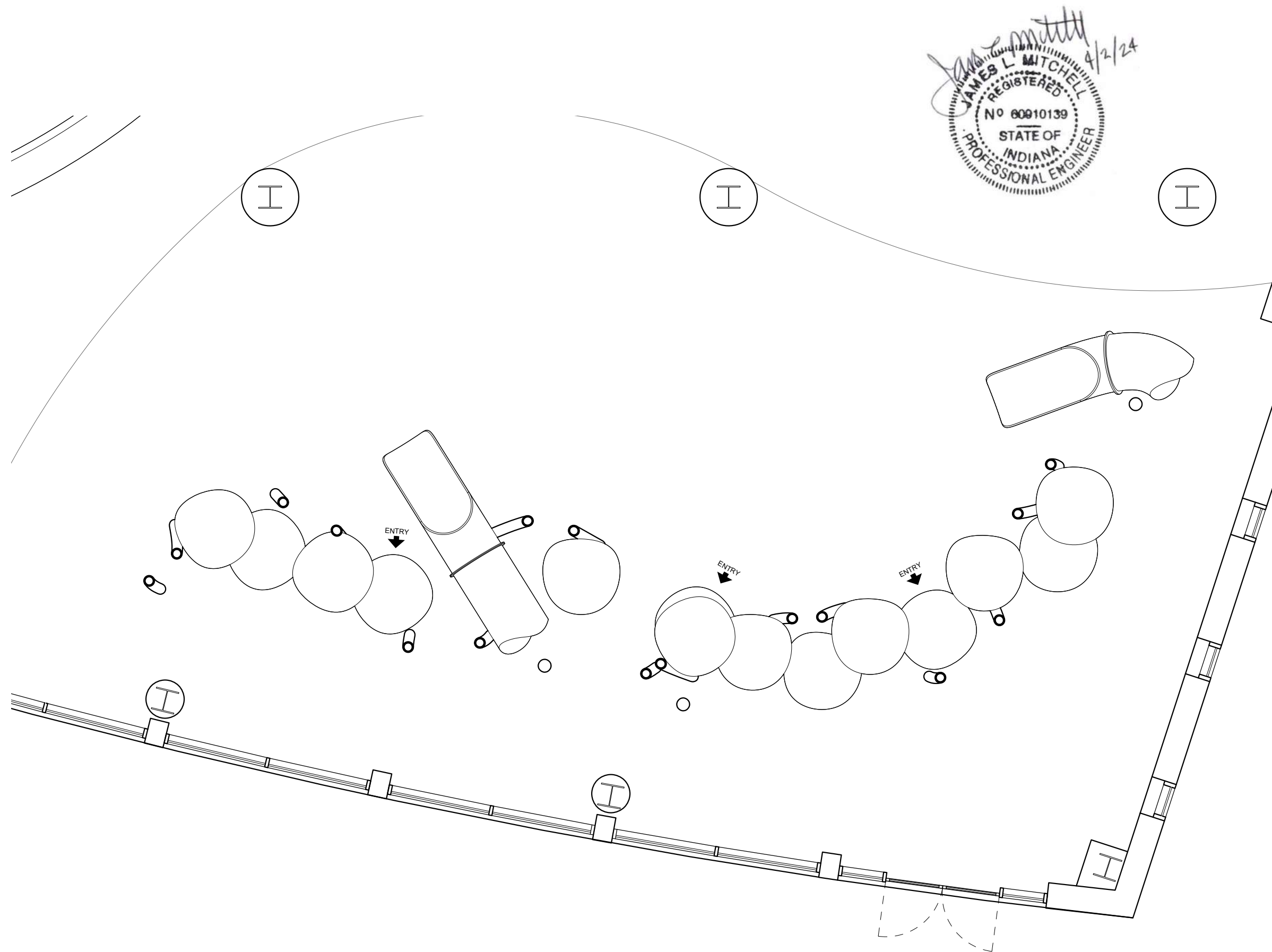
SHEET TITLE
CLIMBER PLAN

SHEET NUMBER

L1.1 (4 / 12)



CLIMBER PLAN
SCALE: 3/16" = 1'-0" 1 N



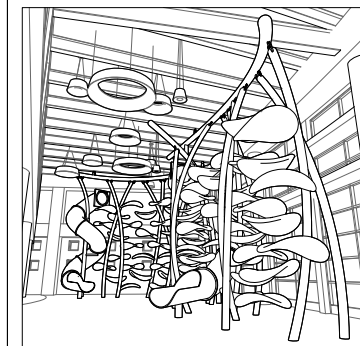
LUCKEY

DESIGNER
LUCKEY LLC
300 EAST STREET
NEW HAVEN, CT 06511
T: 475-441-7468

CONSULTING ENGINEER
JAMES L. MITCHELL
STRUCTURAL ENGINEER
220 CHERRY LAUREL LANE
KYLE, TX 78640

CLIENT
CARMEL CLAY PARKS & RECREATION
1235 CENTRAL PARK DR E
CARMEL, IN 46032

PROJECT
CARMEL CLAY KID'S ZONE



DISCLAIMER
The drawings, specifications, ideas, designs and arrangements presented thereby are and shall remain in the property of Luckey LLC. No part thereof shall be copied, disclosed to others or used in connection with any work or project other than the specific project for which they have been prepared, or reviewed without the written consent of Luckey LLC.

ISSUE	DATE
CONSTRUCTION DOCUMENT	3/19/2024

DRAWN BY
AMELIA CARLSON

SCALE
AS NOTED

DATE
3/19/2024

SHEET TITLE
CLIMBER ENTRY PLAN

SHEET NUMBER

L1.2 (5 / 12)

CLIMBER ENTRY PLAN @ 4'
SCALE: 3/16" = 1'-0" 1 ▲ N



L2.0 (6 / 12)

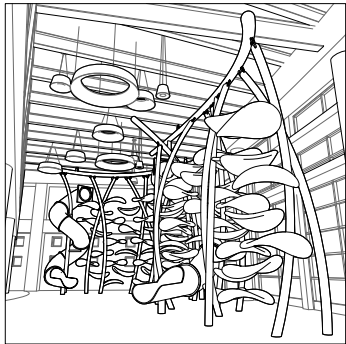
NORTH ELEVATION 1
SCALE: 3/32" = 1'-0"

DESIGNER
LUCKEY LLC
300 EAST STREET
NEW HAVEN, CT 06511
T: 475-441-7468

CONSULTING ENGINEER
JAMES L. MITCHELL
STRUCTURAL ENGINEER
220 CHERRY LAUREL LANE
KYLE, TX 78640

CLIENT
CARMEL CLAY PARKS & RECREATION
1235 CENTRAL PARK DR E
CARMEL, IN 46032

PROJECT
CARMEL CLAY KID'S ZONE



DISCLAIMER
The drawings, specifications, ideas, designs and arrangements presented thereby are and shall remain in the property of Luckey LLC. No part thereof shall be copied, disclosed to others or used in connection with any work or project other than the specific project for which they have been prepared, or reviewed without the written consent of Luckey LLC.

ISSUE	DATE
CONSTRUCTION DOCUMENT	3/19/2024

DRAWN BY
AMELIA CARLSON

SCALE
AS NOTED

DATE
3/19/2024

SHEET TITLE
EAST ELEVATION

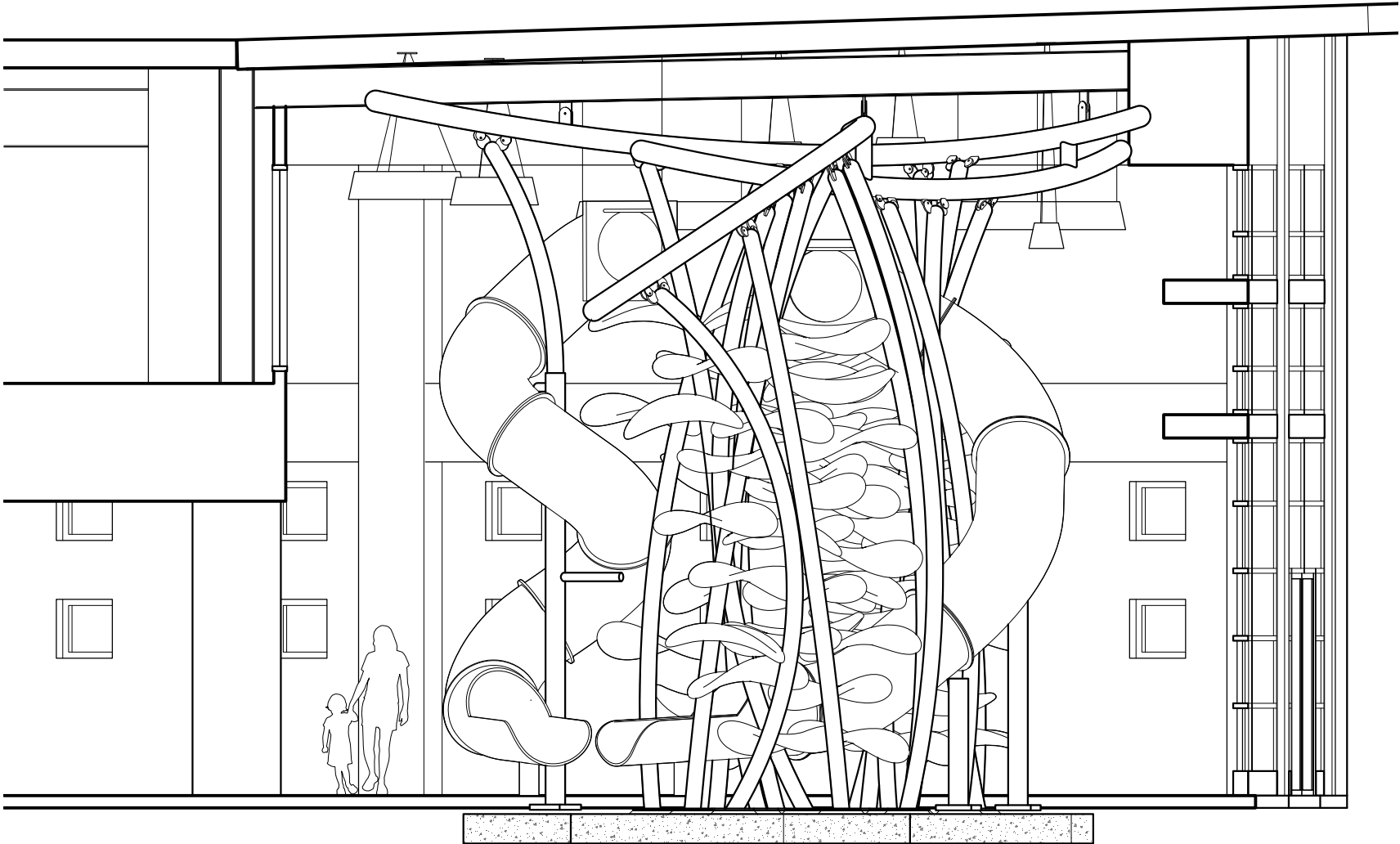
SHEET NUMBER

L2.1 (7 / 12)

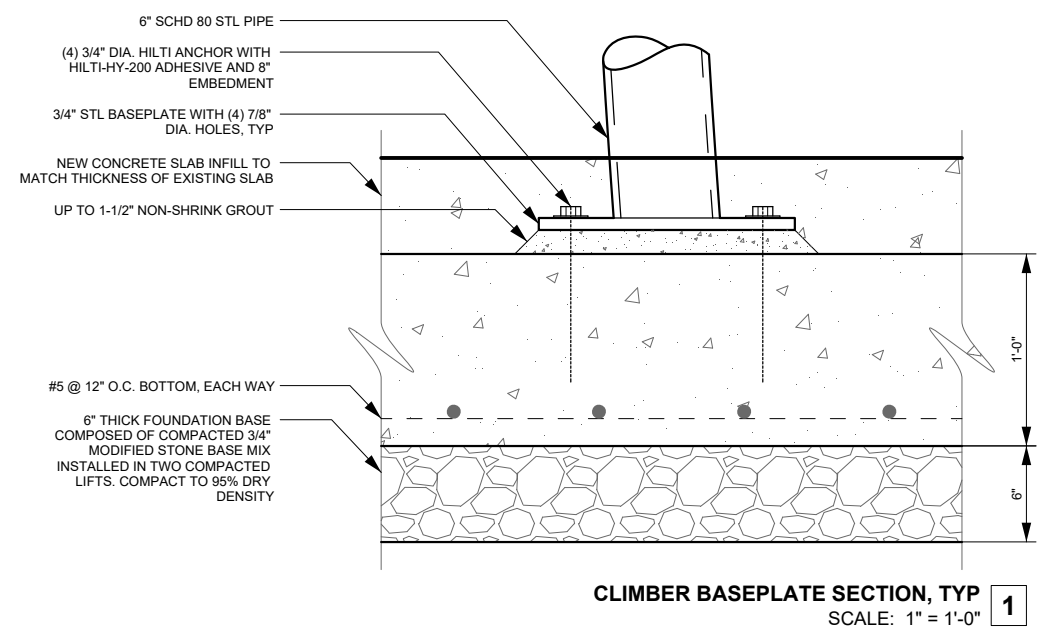
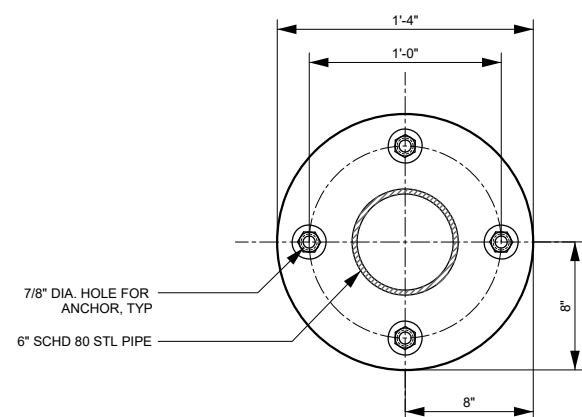
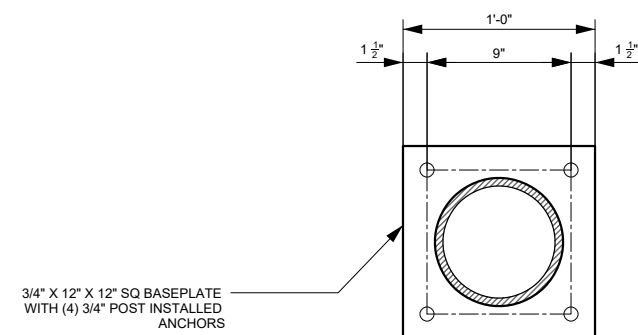
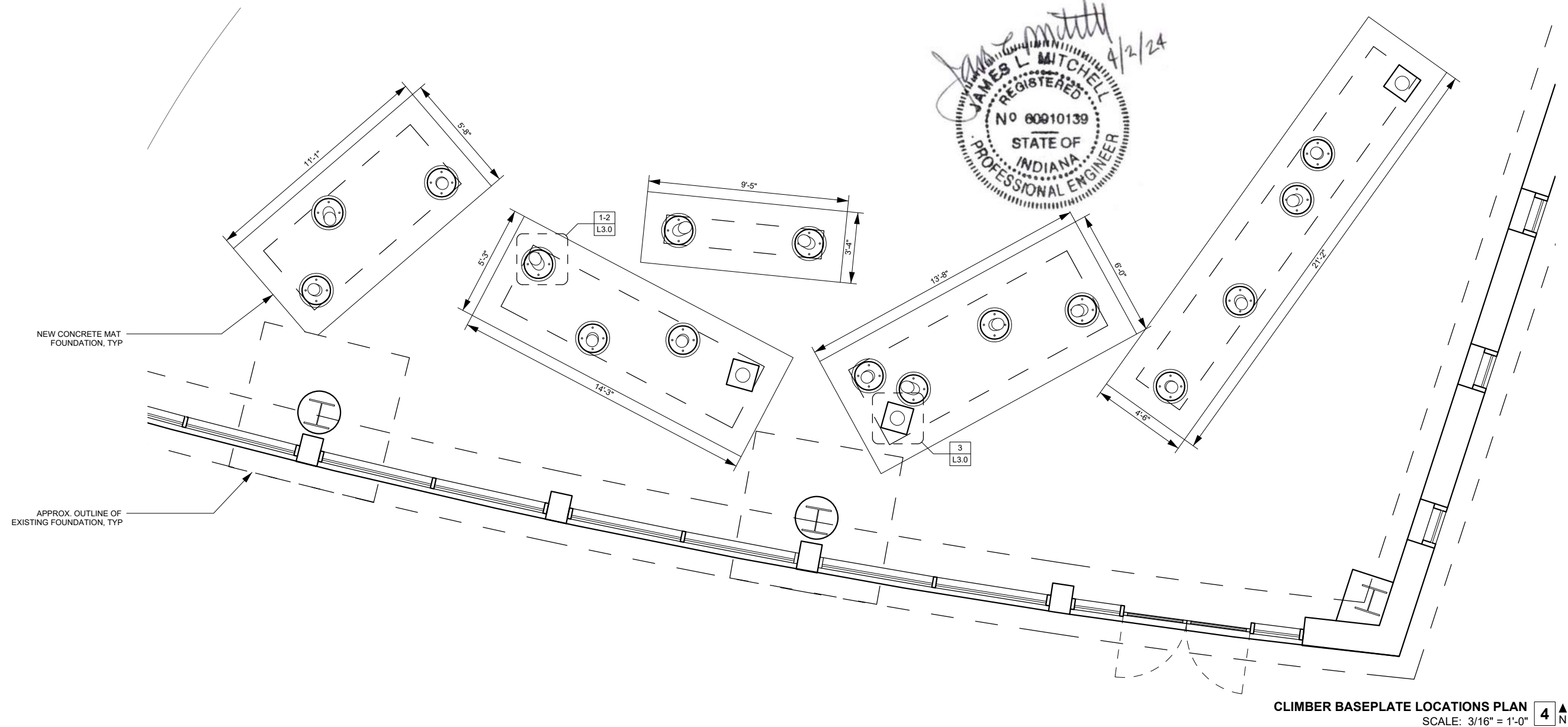


EL. +23'-10"
TOP OF CLIMBER

EL. +0'-0"
GRADE



EAST ELEVATION 1
SCALE: 3/32" = 1'-0"

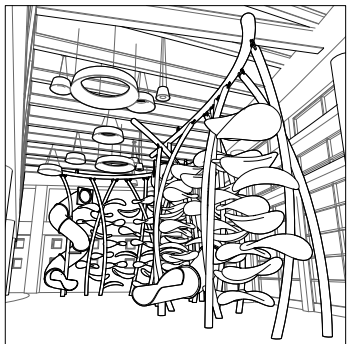


DESIGNER
LUCKEY LLC
300 EAST STREET
NEW HAVEN, CT 06511
T: 475-441-7468

CONSULTING ENGINEER
JAMES L. MITCHELL
STRUCTURAL ENGINEER
220 CHERRY LAUREL LANE
KYLE, TX 78640

CLIENT
CARMEL CLAY PARKS & RECREATION
1235 CENTRAL PARK DR E
CARMEL, IN 46032

PROJECT
CARMEL CLAY KID'S ZONE



DISCLAIMER

The drawings, specifications, ideas, designs and arrangements presented thereby are and shall remain in the property of Luckey LLC. No part thereof shall be copied, disclosed to others or used in connection with any work or project other than the specific project for which they have been prepared, or reviewed without the written consent of Luckey LLC.

ISSUE	DATE
CONSTRUCTION DOCUMENT	3/19/2024

DRAWN BY
AMELIA CARLSON

SCALE
AS NOTED

DATE
3/19/2024

SHEET TITLE
FOOTING DETAIL

SHEET NUMBER

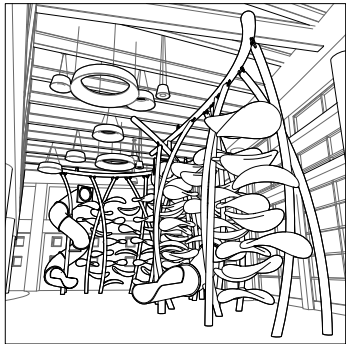
L3.0 (8 / 12)

DESIGNER
LUCKEY LLC
300 EAST STREET
NEW HAVEN, CT 06511
T: 475-441-7468

CONSULTING ENGINEER
JAMES L. MITCHELL
STRUCTURAL ENGINEER
220 CHERRY LAUREL LANE
KYLE, TX 78640

CLIENT
CARMEL CLAY PARKS & RECREATION
1235 CENTRAL PARK DR E
CARMEL, IN 46032

PROJECT
CARMEL CLAY KID'S ZONE



DISCLAIMER
The drawings, specifications, ideas, designs and arrangements presented thereby are and shall remain in the property of Luckey LLC. No part thereof shall be copied, disclosed to others or used in connection with any work or project other than the specific project for which they have been prepared, or reviewed without the written consent of Luckey LLC.

ISSUE	DATE
CONSTRUCTION DOCUMENT	3/19/2024

DRAWN BY
AMELIA CARLSON

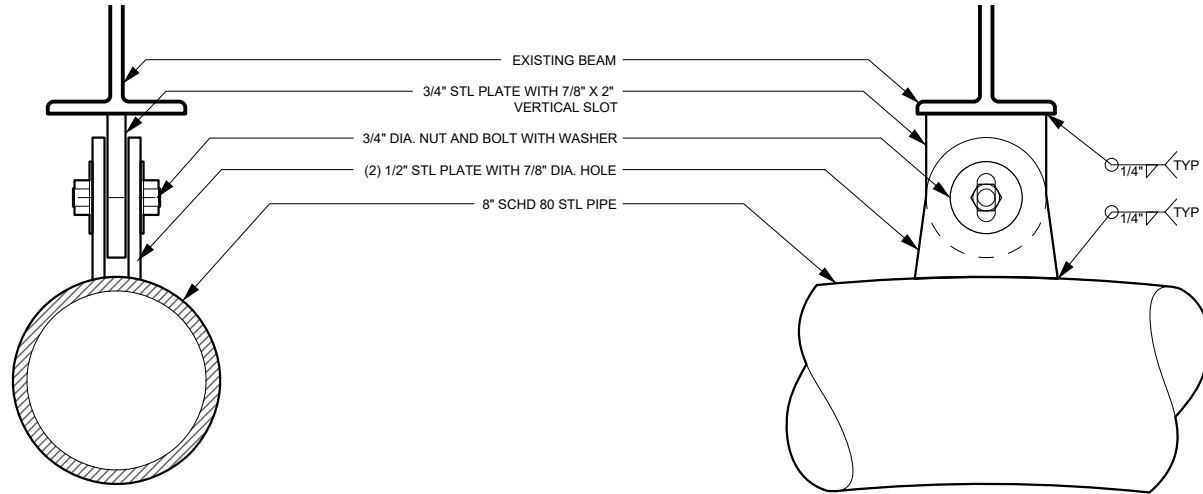
SCALE
AS NOTED

DATE
3/19/2024

SHEET TITLE
PIPE CONNECTION DETAILS

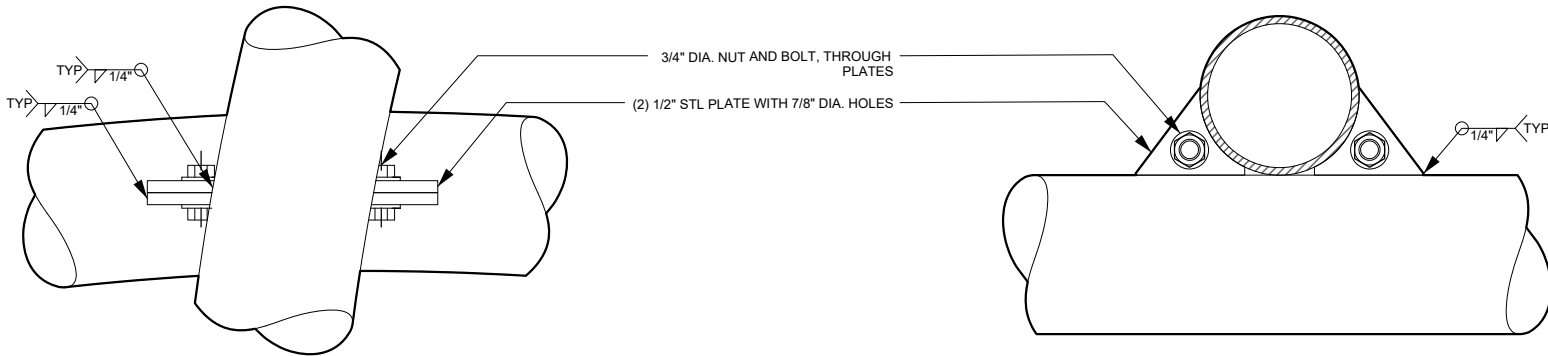
SHEET NUMBER

L3.1 (9 / 12)



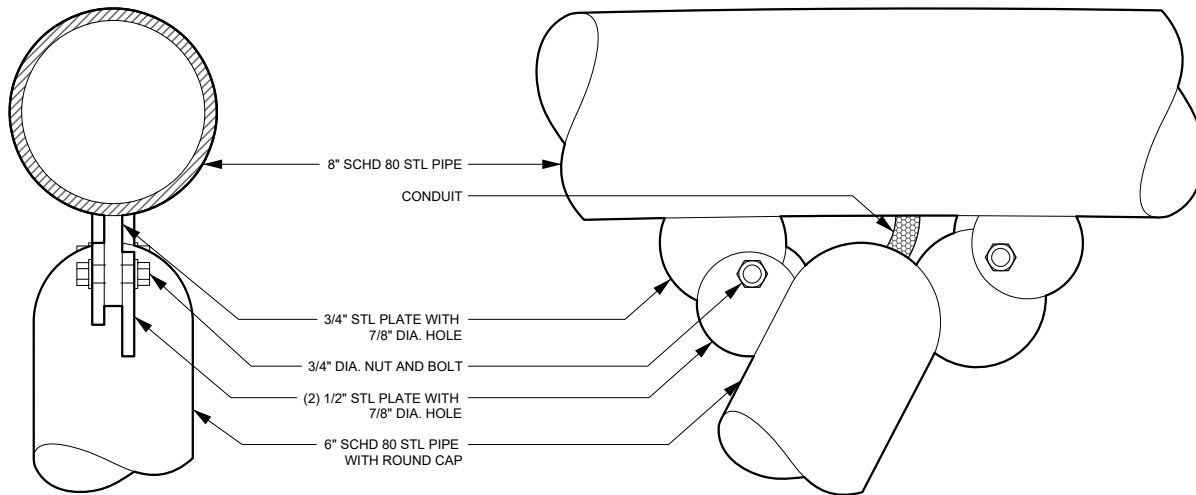
ARC TO BEAM CONNECTION, TYP
SCALE: 1-1/2" = 1'-0" **7**

ARC TO BEAM CONNECTION, TYP
SCALE: 1-1/2" = 1'-0" **6**



COLUMN TO COLUMN CONNECTION, TYP
SCALE: 1-1/2" = 1'-0" **5**

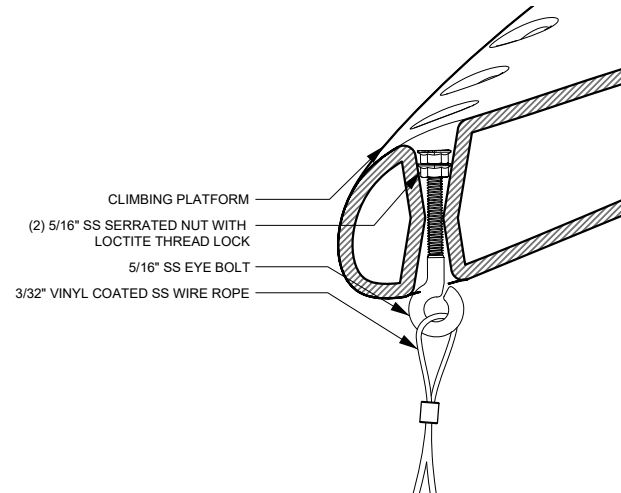
COLUMN TO COLUMN CONNECTION, TYP
SCALE: 1-1/2" = 1'-0" **4**



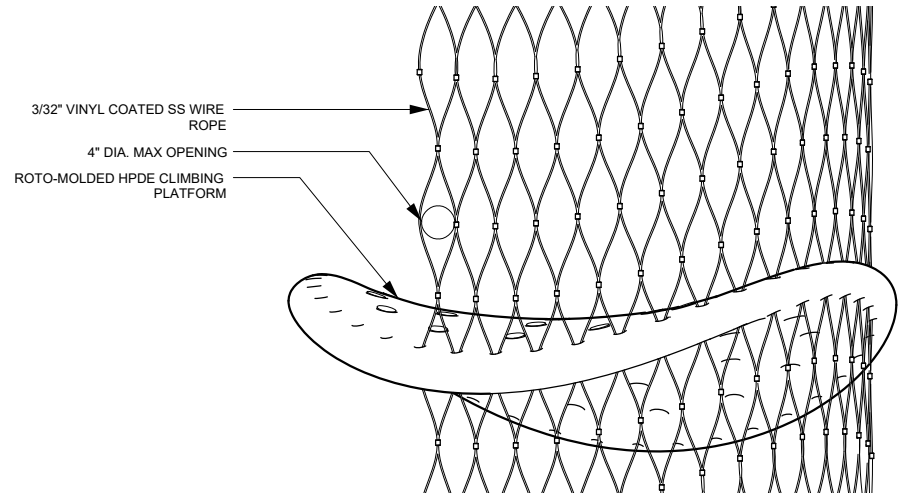
COLUMN TO ARC CONNECTION, TYP
SCALE: 1-1/2" = 1'-0" **2**

COLUMN TO ARC CONNECTION, TYP
SCALE: 1-1/2" = 1'-0" **1**

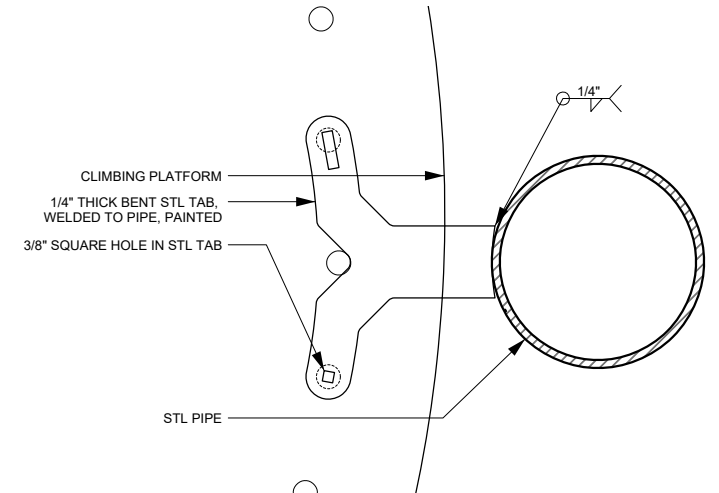




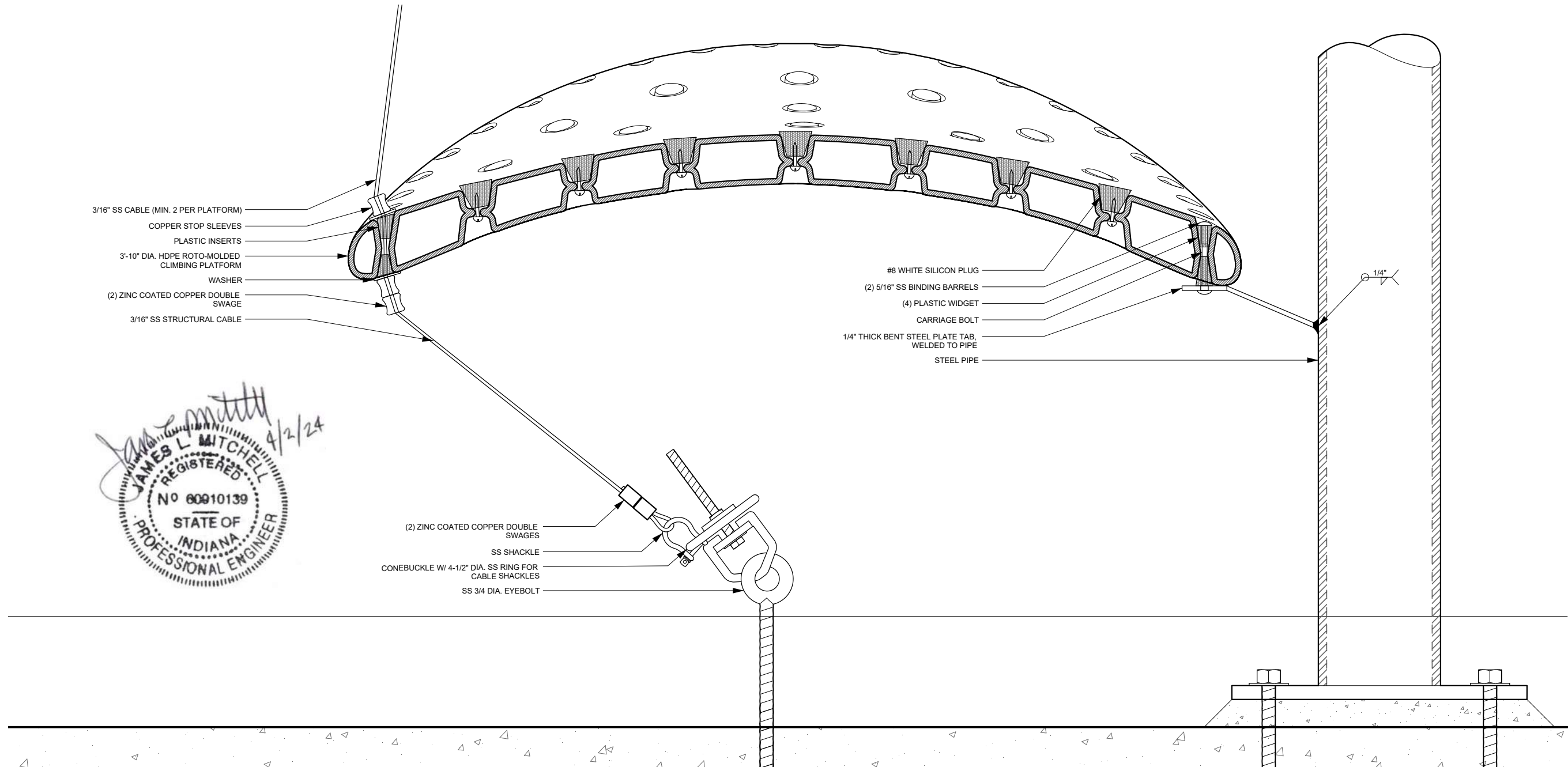
SAFETY WALL DETAIL
SCALE: NTS **4**



SAFETY MESH CONNECTION @ PLASTIC PLATFORM
SCALE: NTS **3**



PIPE TO PLATFORM CONNECTION TAB, TYP
SCALE: 2" = 1'-0" **2**



PLATFORM CONNECTIONS
SCALE: 2" = 1'-0" **1**

James L. Mitchell
4/2/24
JAMES L. MITCHELL
REGISTERED
No 80910139
STATE OF INDIANA
PROFESSIONAL ENGINEER

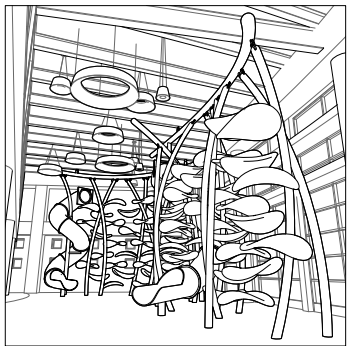


DESIGNER
LUCKEY LLC
300 EAST STREET
NEW HAVEN, CT 06511
T: 475-441-7468

CONSULTING ENGINEER
JAMES L. MITCHELL
STRUCTURAL ENGINEER
220 CHERRY LAUREL LANE
KYLE, TX 78640

CLIENT
CARMEL CLAY PARKS & RECREATION
1235 CENTRAL PARK DR E
CARMEL, IN 46032

PROJECT
CARMEL CLAY KID'S ZONE



DISCLAIMER
The drawings, specifications, ideas, designs and arrangements presented thereby are and shall remain in the property of Luckey LLC. No part thereof shall be copied, disclosed to others or used in connection with any work or project other than the specific project for which they have been prepared, or reviewed without the written consent of Luckey LLC.

ISSUE	DATE
CONSTRUCTION DOCUMENT	3/19/2024

DRAWN BY
AMELIA CARLSON

SCALE
AS NOTED

DATE
3/19/2024

SHEET TITLE
PLATFORM DETAILS

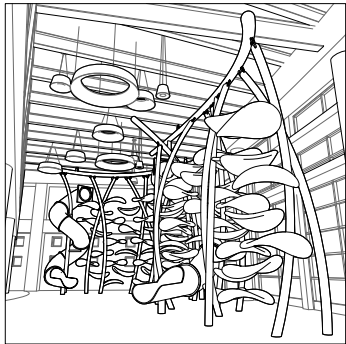
SHEET NUMBER
L3.2 (10 / 12)

DESIGNER
LUCKEY LLC
300 EAST STREET
NEW HAVEN, CT 06511
T: 475-441-7468

CONSULTING ENGINEER
JAMES L. MITCHELL
STRUCTURAL ENGINEER
220 CHERRY LAUREL LANE
KYLE, TX 78640

CLIENT
CARMEL CLAY PARKS & RECREATION
1235 CENTRAL PARK DR E
CARMEL, IN 46032

PROJECT
CARMEL CLAY KID'S ZONE



DISCLAIMER
The drawings, specifications, ideas, designs and arrangements presented thereby are and shall remain in the property of Luckey LLC. No part thereof shall be copied, disclosed to others or used in connection with any work or project other than the specific project for which they have been prepared, or reviewed without the written consent of Luckey LLC.

ISSUE
CONSTRUCTION DOCUMENT

DATE
3/19/2024

DRAWN BY
AMELIA CARLSON

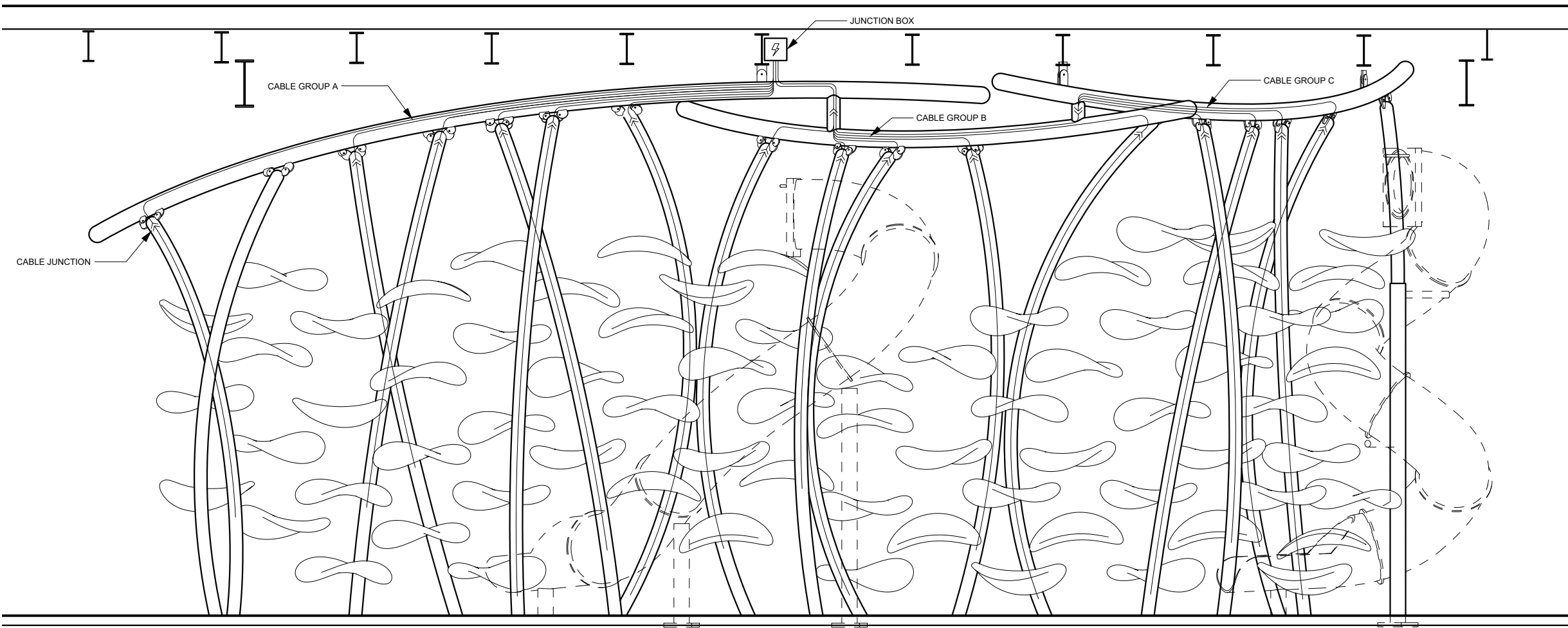
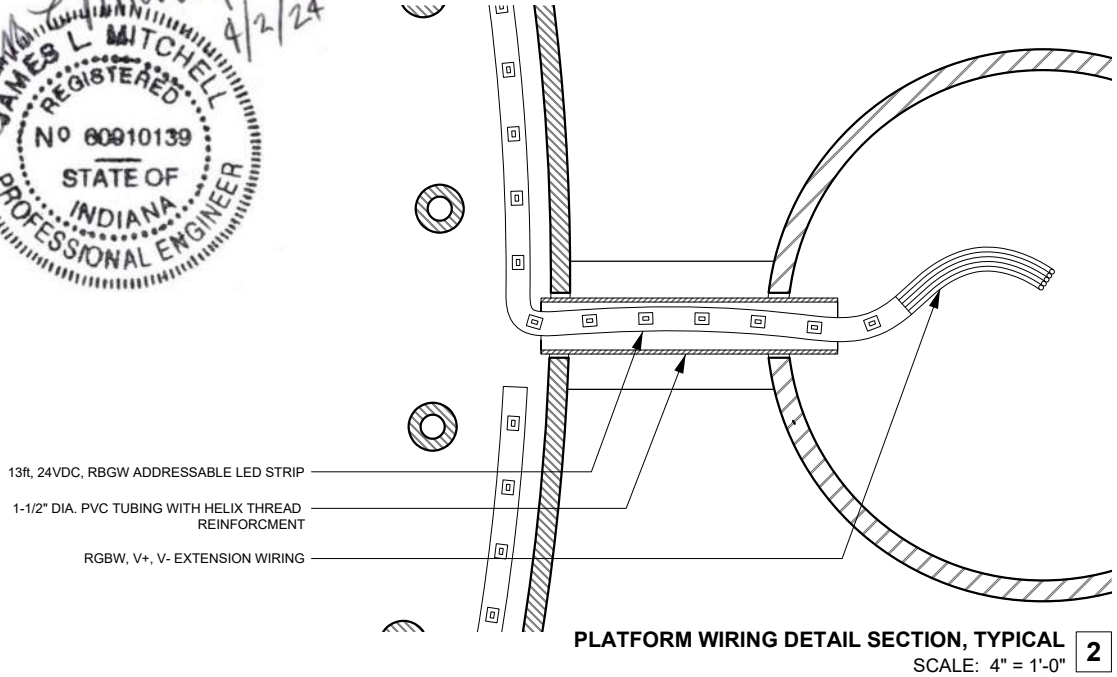
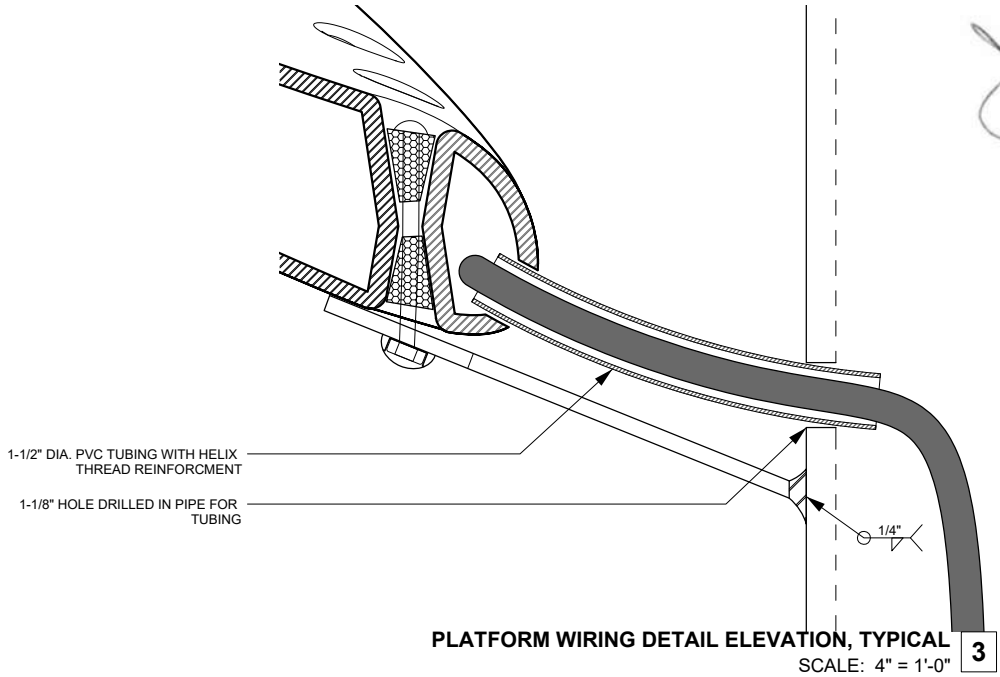
SCALE
AS NOTED

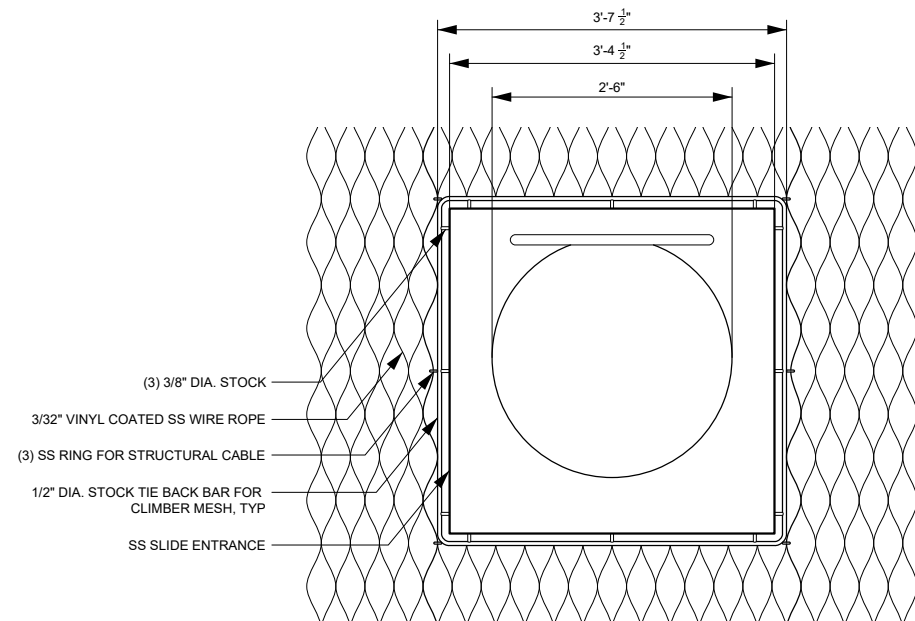
DATE
3/19/2024

SHEET TITLE
PLATFORM LIGHTING DETAILS

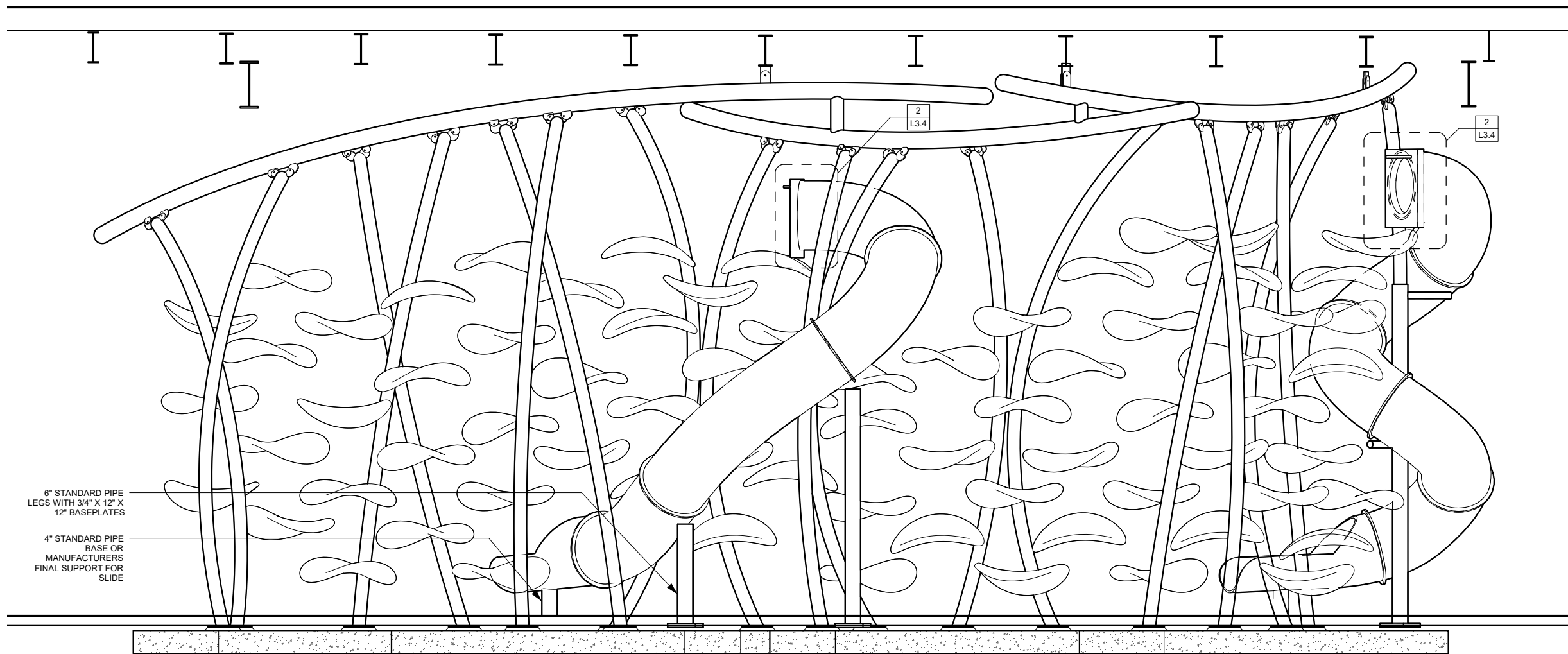
SHEET NUMBER

L3.3 (11 / 12)





SLIDE ENTRANCE DETAIL 2
SCALE: 1/2" = 1'-0"



NORTH ELEVATION 1
SCALE: 3/32" = 1'-0"

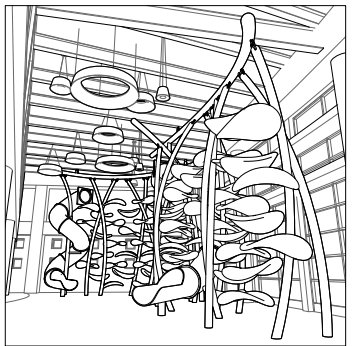
LUCKEY

DESIGNER
LUCKEY LLC
300 EAST STREET
NEW HAVEN, CT 06511
T: 475-441-7468

CONSULTING ENGINEER
JAMES L. MITCHELL
STRUCTURAL ENGINEER
220 CHERRY LAUREL LANE
KYLE, TX 78640

CLIENT
CARMEL CLAY PARKS & RECREATION
1235 CENTRAL PARK DR E
CARMEL, IN 46032

PROJECT
CARMEL CLAY KID'S ZONE



DISCLAIMER
The drawings, specifications, ideas, designs and arrangements presented thereby are and shall remain in the property of Luckey LLC. No part thereof shall be copied, disclosed to others or used in connection with any work or project other than the specific project for which they have been prepared, or reviewed without the written consent of Luckey LLC.

ISSUE
CONSTRUCTION DOCUMENT

DATE
3/19/2024

DRAWN BY
AMELIA CARLSON

SCALE
AS NOTED

DATE
3/19/2024

SHEET TITLE
SLIDE DETAILS

SHEET NUMBER

L3.4 (12 / 12)