

ADDENDUM NO. 2

South Putnam Roof Replacements

South Putnam Community School Corporation  
Greencastle, Indiana

Project No. 222152.05

Index of Contents

Addendum No. 2, 3 items, 1 page  
Revised Drawing Sheets: G-001 through A-518

Date: April 19, 2024

FANNING/HOWEY ASSOCIATES, INC.  
ARCHITECTS/ENGINEERS/CONSULTANTS



**South Putnam Community School Corporation - South Putnam HS & Central ES Elementary School Roof Replacement**

**April 22, 2024**

**ADDENDUM NO. 2**

This addendum is issued as a supplement to the plans and specifications and shall be considered an integral part of the same.

<b>Item:</b>	<b>2.01</b>
<b>Location:</b>	Add E-Verify Affidavit to 00 41 13 Bid Form
<b>Description:</b>	Add E-Verify Affidavit to contract documents. Prime bidders are required to complete and include with Bid Form. Lower tier contractors will be required to complete after prime contract is awarded.

## E-Verify Affidavit

Pursuant to Indiana Code 22-5-1.7, Contractor agrees and shall enroll in and verify the work eligibility status of all newly hired employees of the contractor through the E-Verify program including all new employees of lower tier subcontractors. E-Verify means the electronic verification of work authorization program of the Illegal Immigration Reform and Immigration Responsibility Act of 1996 (P.L. 104-208). Division C, Title IV, s.403(a), as amended, operated by the United States Department of Homeland Security or a successor work authorization program designated by the United States Department of Homeland Security or other federal agency authorized to verify the work authorization status of newly hired employees under the Immigration Reform and Control Act of 1986 (P.L. 99-603). Contractor is not required to verify the work eligibility status of all newly hired employees of Contractor through the E-verify program if the E-Verify program no longer exists.

The undersigned, on behalf of the Contractor, being first duly sworn, deposes and states that the Contractor does not knowingly employ an unauthorized alien. The undersigned further affirms that, prior to entering into its contract with the City, the undersigned Contractor will enroll in and agrees to verify the work eligibility status of all its newly hired employees through the E-Verify program.

Name of Company

By:

Title

## ACKNOWLEDGEMENT

STATE OF INDIANA )  
 ) SS  
COUNTY OF ALLEN)

Before me, a Notary Public, in and for said State and County, personally appeared the within named Company by Name, Title, who being first duly sworn upon his/her oath states that he/she is a duly authorized agent of the Contractor, and as such duly authorized to execute the foregoing Declaration, and acknowledged the same as his/her voluntary act and deed.

**WITNESS** my hand and seal this \_\_\_\_\_ day of \_\_\_\_\_, 20\_\_\_\_.

My Commission Expires:

Signature of Notary Public

Resident of \_\_\_\_\_ County \_\_\_\_\_

---

Printed Name

END OF SECTION 004588

TO: ALL BIDDERS OF RECORD

ADDENDUM NO. 2 to Drawings and Project Manual, dated March 22, 2024, for South Putnam Community School Corporation, 3999 South US Highway 231, Greencastle, Indiana 46135; as prepared by Fanning/Howey Associates, Inc., Indianapolis, Indiana.

This Addendum shall hereby be and become a part of the Contract Documents the same as if originally bound thereto.

The following clarifications, amendments, additions, revisions, changes, and modifications change the original Contract Documents only in the amount and to the extent hereinafter specified in this Addendum.

Each bidder shall acknowledge receipt of this Addendum in his proposal or bid.

NOTE: Bidders are responsible for becoming familiar with every item of this Addendum. (This includes miscellaneous items at the very end of this Addendum.)

RE: ALL BIDDERS

ITEM NO. 1. PROJECT MANUAL, SECTION 07 53 23 – THERMOSET SINGLE-PLY MEMBRANE ROOFING/ADHERED EPDM ROOFING SYSTEM

- A. Article 2.04, A., 1., b., 2): Change “R-30.0” to “R-20.0”.

ITEM NO. 2. ACCEPTABLE MANUFACTURERS

The following manufacturers are to be considered acceptable manufacturers (suppliers and fabricators) for the Sections of the Specifications listed. Listed manufacturers are required to bid on products equal in type and design, size, function, and quality to that originally specified. Final decision as to equality of products specified versus those proposed shall be made by the Architect.

Section 07 54 00 – Thermoplastic Single-ply Membrane Roofing  
- Johns Manville, Denver, Colorado (JM PVC-60 mil MIN)

ITEM NO. 3. REVISED DRAWING SHEETS

- A. Drawing Sheets: G-001 through A-518 have been revised, dated 04/18/24 and are included with and hereby made a part of this Addendum. These Drawings supersede the original documents.

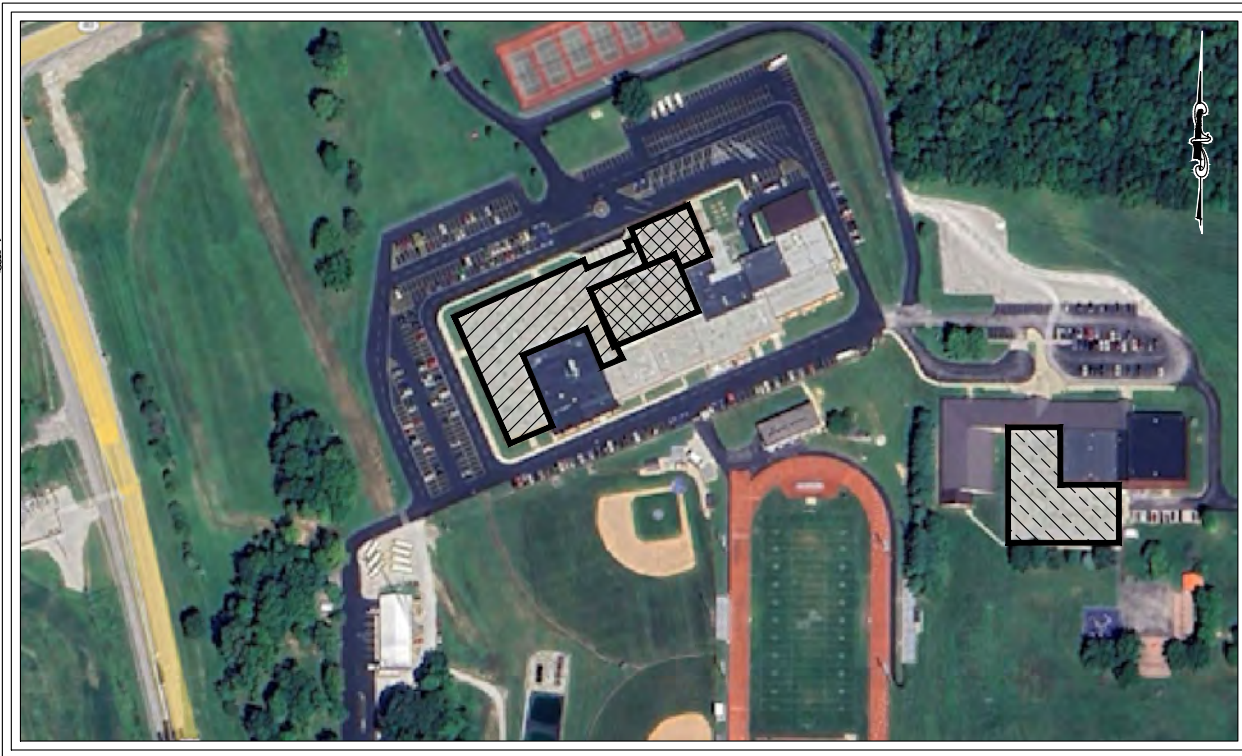
END OF ADDENDUM

# SOUTH PUTNAM COMMUNITY SCHOOL CORPORATION

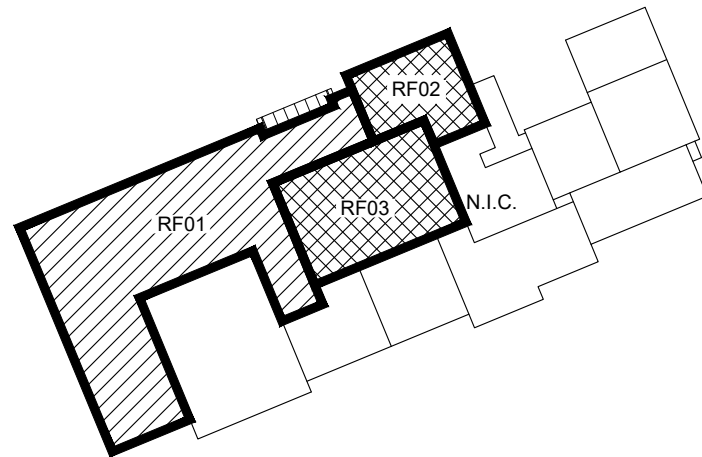
## 1780 EAST HIGHWAY 40 GREENCASTLE, IN SOUTH PUTNAM HIGH SCHOOL AND CENTRAL ELEMENTARY SCHOOL ROOF REPLACEMENT PROJECT

### DRAWING INDEX

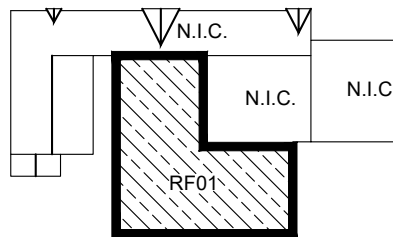
G-001	TITLE SHEET	△
G-002	GENERAL NOTES	
G-003	PARTIAL SITE PLAN	
G-004	WIND CALCULATIONS	
G-005	CORE CUT LOCATIONS SOUTH PUTNAM HIGH ACHOOL	△
G-006	CORE CUT LOCATIONS SOUTH PUTNAM CENTRAL ELEMENTARY SCHOOL	△
A-101	SOUTH PUTNAM HIGH SCHOOL PARTIAL ROOF PLAN	△
A-102	SOUTH PUTNAM HIGH SCHOOL PARTIAL ROOF PLAN	△
A-103	CENTRAL ELEMENTARY SCHOOL PARTIAL ROOF PLAN	△
A-501	ROOF DETAILS	△
A-502	ROOF DETAILS	△
A-503	ROOF DETAILS	△
A-504	ROOF DETAILS	△
A-505	ROOF DETAILS	△
A-506	ROOF DETAILS	△
A-507	ROOF DETAILS	△
A-508	ROOF DETAILS	△
A-509	ROOF DETAILS	△
A-510	ROOF DETAILS	△
A-511	ROOF DETAILS	△
A-512	ROOF DETAILS	△
A-513	ROOF DETAILS	△
A-514	ROOF DETAILS	
A-515	ROOF DETAILS	
A-516	ROOF DETAILS	
A-517	ROOF DETAILS	
A-518	ROOF DETAILS	



**A** LOCATION MAP  
G-001  
SCALE: NOT TO SCALE



SOUTH PUTNAM HIGH SCHOOL



CENTRAL ELEMENTARY SCHOOL

### PROJECT AREA

- BASE BID 1
- BASE BID 2
- BASE BID 3

**B** BUILDING KEY PLANS  
G-001  
SCALE: NOT TO SCALE

Issued for Revision:

2 ADDENDUM NO 2  
04/18/24

**TECHNICAL  
ASSURANCE**  
HIGH PERFORMANCE BUILDING ENVELOPE EXPERTS  
Cleveland | Indianapolis | Knoxville | Raleigh

SOUTH PUTNAM COMMUNITY SCHOOL CORPORATION  
SOUTH PUTNAM HIGH SCHOOL AND CENTRAL ELEMENTARY SCHOOL  
ROOF REPLACEMENT PROJECT  
1780 EAST HIGHWAY 40 GREENCASTLE, IN  
TITLE SHEET

Drawn By:  
JB  
Checked By:  
JSG  
Date  
04/18/24  
Scale:  
N.T.S.

Sheet No.  
**G-001**

R-002.DWG JBUNTING 4/18/2024 3:42 PM

GENERAL NOTES

1.

DRAWINGS ARE INTENDED FOR PROJECT ORIENTATION, APPROXIMATE CONFIGURATIONS, LOCATION OF DETAILS, AND PROJECT SPECIFIC NOTES.
2.

THE CONTRACTOR IS RESPONSIBLE FOR ALL DIMENSIONS AND DETAILS THAT AFFECT THIS WORK. BY SUBMITTING HIS PROPOSAL, THE CONTRACTOR ACKNOWLEDGES THAT HE HAS PERFORMED HIS DUE DILIGENCE IN REGARD TO EXISTING AS-BUILT CONDITIONS.
3.

IN LOCATIONS WHERE DETAILS OR WORK DESCRIPTION CALLOUTS ARE NOTED AS "TYPICAL", THE REFERENCED INFORMATION SHALL APPLY AT ALL SIMILAR LOCATIONS THROUGHOUT THE IDENTIFIED PROJECT SCOPE OF WORK.
4.

IN LOCATIONS WHERE DETAILS OR WORK DESCRIPTION CALLOUTS ARE NOTED AS "SIMILAR", THE ROOF DECK, SUBSTRATE COMPONENTS, THERMAL INSULATION, AND ROOF COVERING MAY DIFFER FROM THE CONDITIONS GRAPHICALLY SHOWN. REGARDLESS, THE DESIGN CONCEPT IN THE REFERENCED DETAIL OR WORK DESCRIPTION NOTE SHALL PERTAIN TO THE CONDITION.
5.

REFER TO THE PROJECT SUMMARY OF WORK FOR A GENERAL OVERVIEW OF THE PROJECT. REFER TO THE INDIVIDUAL PLAN SHEETS FOR SPECIFIC WORK DESCRIPTION ITEMS IN THE AREAS OF WORK.
6.

EXAMINE THE SITE CONDITIONS AROUND THE BUILDINGS AT GRADE AND LEVEL BELOW ROOFS FOR ACCESS.
7.

PROTECT EXISTING WALL FINISHES AND COMPONENTS TO REMAIN FROM DAMAGE DURING CONSTRUCTION ACTIVITIES.
8.

COORDINATE PARKING, CRANE ACCESS, MATERIAL STAGING AND STORAGE WITH THE OWNER.
9.

ACCESS SCAFFOLDING MAY BE PROVIDED AND ERECTED BY THE CONTRACTOR IF NEEDED, THE CONTRACTOR SHALL PROVIDE AND INSTALL EXTERIOR PROTECTIVE MEASURES THAT WILL RESTRICT UNAUTHORIZED ACCESS TO THE AREAS OF WORK.
10.

COORDINATE BUILDING AND ROOF ACCESS WITH THE OWNER.
11.

WORK SHALL BE SCHEDULED DURING SUMMER MONTHS WHILE SCHOOL IS NOT IN SESSION. COORDINATE BUILDING QUIET TIMES AND LOCATIONS WITH THE OWNER; AS NEEDED WEEKEND WORK MAY BE REQUIRED AS TO NOT DISRUPT BUILDING OCCUPANTS.
12.

EXTEND ROOF PROJECTION PENETRATIONS TO ACHIEVE A MINIMUM HEIGHT OF 8-INCHES ABOVE THE FINISHED ROOF SURFACE. UTILIZE LIKE-MATERIALS IN PROJECTION EXTENSIONS. DO NOT INSTALL PROJECTION EXTENSION JOINERY ABOVE THE FINISHED INSULATION.
13.

INSPECT ALL EXISTING ROOF DRAINS. REMOVE AND REPLACE ANY DAMAGED OR MISSING COMPONENTS. REMOVE AND REPLACE ALL PLASTIC ROOF DRAIN STRAINERS WITH CAST IRON STRAINERS. TIGHTEN ALL CLAMPING RINGS.
14.

THE CONTRACTOR IS RESPONSIBLE FOR THE PROPER SEQUENCING OF CONSTRUCTION ON THE ROOF SURFACE TO PREVENT DAMAGE TO THE NEWLY INSTALLED ROOFING SYSTEM. THE CONTRACTOR SHALL REMOVE EQUIPMENT AND MATERIALS, MITIGATE TRAFFIC, AND PROTECT CONDITIONS THAT ARE CONSIDERED SUBSTANTIALLY COMPLETE.
15.

AS PART OF DEMOBILIZATION AND FINAL CLEANING, THE CONTRACTOR SHALL LOW PRESSURE WASH AND MILD DETERGENT CLEAN THE ROOF SURFACE TO REMOVE ALL DIRT AND CONTAMINANTS FROM THE INSTALLED ROOF AND COATING SURFACES. CLEANING MEANS AND METHODS SHALL BE IN STRICT ACCORDANCE WITH THE MANUFACTURERS WRITTEN INSTRUCTIONS.

- ROOF REPLACEMENT:

16.

INSTALL WOOD BLOCKING TO BE LEVEL WITH OR ABOVE INSULATION THICKNESS AT ROOF CURBS BASE TIE-INS. PROVIDE TAPERED EDGE STRIP OR TAPERED INSULATION PANELS AS NEEDED FOR A SMOOTH TRANSITION.

17.

VERIFY SECURE ATTACHMENT OF EXISTING WOOD BLOCKING TO THE SUBSTRATE; PROVIDE AND INSTALL SUPPLEMENTAL ATTACHMENT OF WOOD BLOCKING TO MEET SPECIFICATION REQUIREMENTS. REMOVE AND REPLACE ANY DAMAGED OR DETERIORATED WOOD BLOCKING COMPONENTS.

18.

NEW WOOD BLOCKING TO BE LEVEL WITH OR BELOW INSULATION THICKNESS AT LOW EAVE LOCATIONS. DO NOT EXCEED 1/4-INCH MAXIMUM DIMENSION BELOW INSULATION THICKNESS.

19.

THROUGH-ROOF PROJECTIONS SHALL BE SECURED IN PLACE TO PREVENT MOVEMENT DURING ALL PHASES OF THE WORK. PROVIDE 10-GAUGE GALVANIZED STEEL STRUCTURAL CLAMPS WITH BOLT-UP CONNECTIONS AT ALL THROUGH-ROOF PROJECTIONS PRIOR TO ROOF DEMOLITION. MAINTAIN CLAMPS THROUGH ALL PHASES OF THE WORK.

20.

DISCONNECT, RAISE AND RESET EXISTING SET-ON ACCESSORIES AS NEEDED TO ACCOMMODATE THE WORK. STORE AND PROTECT ALL REMOVED COMPONENTS AND ACCESSORIES FOR RE-INSTALLATION (WHERE SPECIFIED). COORDINATE REQUIREMENTS WITH THE SITE AND APPROPRIATE SUB-CONTRACTORS PRIOR TO THE START OF WORK.

21.

PROVIDE MANUFACTURED PIPE SUPPORTS BENEATH ALL LINES THAT ARE ELEVATED ABOVE THE FINISHED ROOF SURFACE AT 6-FEET ON CENTER MAXIMUM SPACING; SET SUPPORTS ON MEMBRANE WALKWAY PADS.

22.

WALKWAY MATERIAL SHALL BE INSTALLED TO PROTECT THE ROOF SURFACE AND PEDESTRIAN TRAFFICKERS. AT A MINIMUM, WALKWAY MATERIALS SHALL BE INSTALLED AT ALL ROOF ACCESS LOCATIONS, AT THE TOP AND BOTTOM OF ACCESS STAIRS, LADDERS AND PLATFORMS, ON 3 SIDES OF ROOF ACCESS HATCHES, AROUND ALL SERVICEABLE ROOFTOP EQUIPMENT, AND AS PROTECTION BENEATH CONDENSATE LINES AND DOWNSPOUTS.

23.

TRANSITIONS BETWEEN ADJACENT MEMBRANE FLASHING DETAILS/CONDITIONS SHALL BE CONTINUOUS AND INSTALLED TO WATERTIGHT CONDITION. WATERTIGHT SHEET METAL FLASHING CLOSURES SHALL BE CONSTRUCTED OUT OF PREFINISHED GALVANIZED METAL, MINIMUM 26-GAUGE, AND SHALL BE FABRICATED TO CONFORM TO SUBSTRATE AND MEMBRANE FLASHING PROFILES.

24.

VERTICAL FLASHING TERMINATIONS SHALL BE CONSTRUCTED TO INCORPORATE MECHANICALLY ATTACHED SHEET METAL COUNTERFLASHING OVER WATERTIGHT MEMBRANE TERMINATIONS TO CREATE A COVERED CONDITION OVER THE WATERTIGHT MEMBRANE TERMINATION. A MANUFACTURED COMPRESSION BAR, INSTALLED VERTICALLY IS NOT AN ACCEPTABLE DETAIL SUBSTITUTION.

25.

THE CONTRACTOR SHALL INSTALL A TWO-LAYER APPLICATION OF ROOF MEMBRANE SYSTEM MANUFACTURER'S LIQUID-APPLIED PMMA COATING AT FINISHED ROOF AREAS WHERE MINOR AREAS OF STANDING WATER ARE OBSERVED DURING THE LOW-PRESSURE WASH CLEANING THE ROOF SURFACE. THE APPLICATION OF LIQUID-APPLIED PMMA COATING SHALL BE IN STRICT ACCORDANCE WITH THE ROOF MEMBRANE MANUFACTURER'S WRITTEN INSTRUCTIONS.

26.

PROVIDE UNDERDECK PROTECTION AT ROOF REPLACEMENT AREAS ABOVE THE GYMNASIUM AND NATATORIUM TO MITIGATE THE SPREAD OF CONSTRUCTION RELATED DUST AND DEBRIS. CLEAN UP ALL CONDITIONS SOILED AS A RESULT OF CONSTRUCTION ACTIVITIES.

HAZARDOUS MATERIALS - CONTRACTOR CERTIFICATION:

THE OWNER INTENDS TO ASSURE THAT NO OTHER HAZARDOUS MATERIAL IS USED OR ALLOWED TO REMAIN ON A PROJECT SITE, INCLUDING LEAD PAINT AND PCB. TO ASSIST THE OWNER IN ACCOMPLISHING THIS, THE CONTRACTOR MUST SUBMIT THE FOLLOWING CERTIFICATION UPON SUBSTANTIAL COMPLETION:

THE CONTRACTOR HEREBY CERTIFIES, BASED ON A GOOD FAITH REVIEW OF THE CONTRACT DOCUMENTS, THAT IT IS UNAWARE OF ANY REASON TO BELIEVE THAT THE CONTRACT DOCUMENTS PREPARED FOR THIS CONTRACT MIGHT REQUIRE MATERIALS CONTAINING ASBESTOS, LEAD PAINT, OR PCB, AND FURTHER THAT THE CONTRACTOR HAS INTRODUCED NO OTHER SUCH MATERIALS DURING THE CONSTRUCTION OF THIS PROJECT.

FURTHERMORE, THE CONTRACTOR CERTIFIED THAT THE CONTRACTOR HAS NOTIFIED THE OWNER OF THE PRESENCE OF ANY PRE-EXISTING ASBESTOS, LEAD PAINT OR PCB THAT HAS BEEN DISCOVERED DURING PERFORMANCE. IF SUCH MATERIALS WERE DISCOVERED, THE CONTRACTOR CERTIFIED THAT IT HAS TAKEN ALL STEPS THAT ARE REQUIRED BY THE CONTRACT TO REMOVE, OR TO PROTECT AGAINST DISTURBANCE OF SUCH MATERIALS, UNLESS REQUIRED BY THE TERMS OF THE CONTRACT TO DEFER REMOVAL TO THE OWNER OR TO ANOTHER CONTRACTOR.

SUBMIT THIS CERTIFICATION TO:  
INFO@TECHNICALASSURANCE.COM  
HAZARDOUS MATERIALS COORDINATOR

Issued for Revision:

TECHNICAL ASSURANCE

High Performance Building Envelope Experts

Cleveland | Indianapolis | Knoxville | Raleigh

SOUTH PUTNAM COMMUNITY SCHOOL CORPORATION

SOUTH PUTNAM HIGH SCHOOL AND CENTRAL ELEMENTARY SCHOOL

ROOF REPLACEMENT PROJECT

GREENCASTLE, IN

GENERAL NOTES

Drawn By:

JB

Checked By:

JSG

Date

04/18/24

Scale:

AS SHOWN




Sheet No.

G-002

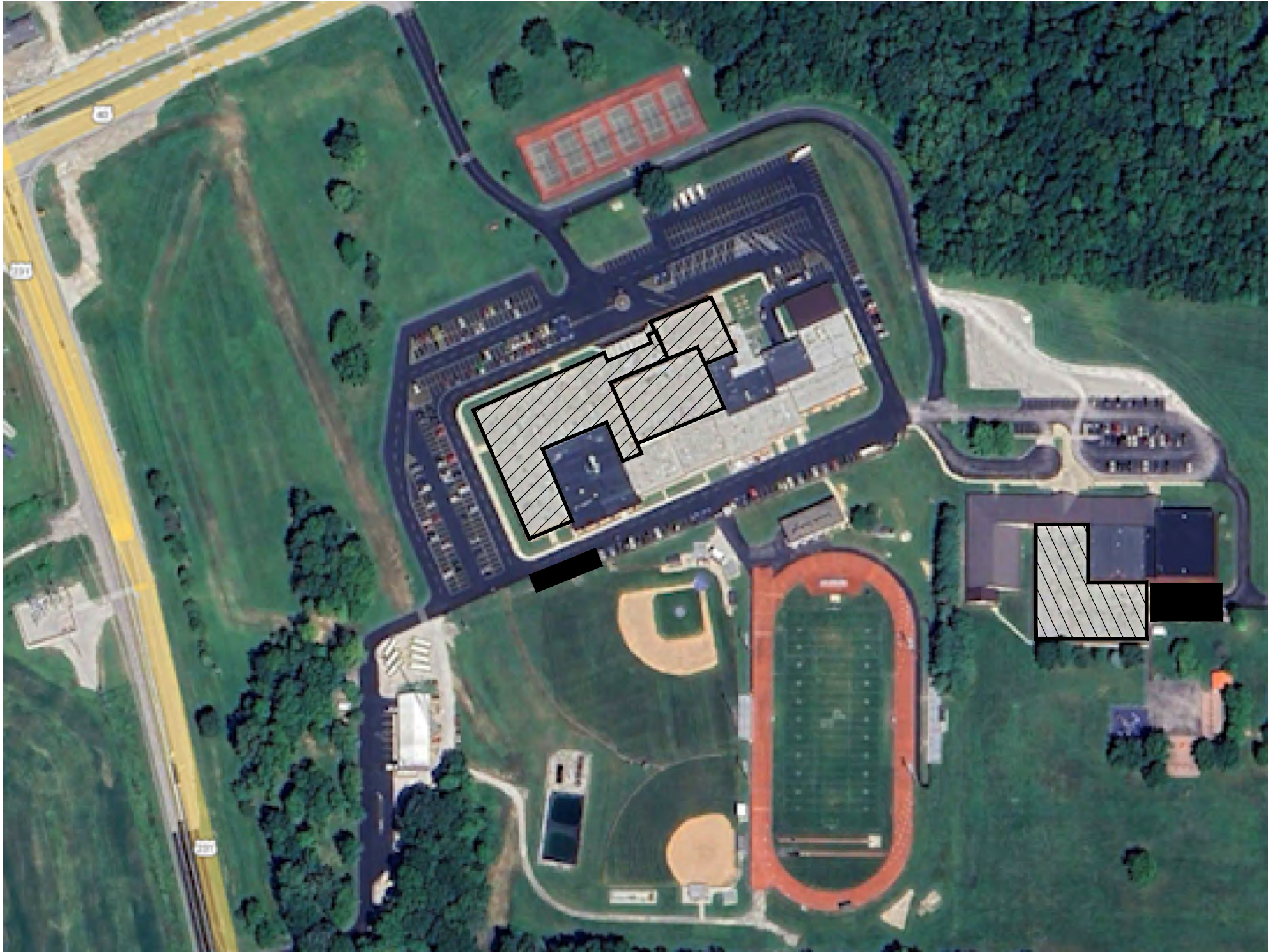


R-002.DWG JBUNTING 4/18/2024 3:43 PM

SITE LEGEND

-  SOUTH PUTNAM HIGH SCHOOL BUILDING WORK AREA
-  CENTRAL ELEMENTARY SCHOOL BUILDING WORK AREA
-  CONTRACTOR LAY-DOWN AREAS

NOTE: CONFIRM WITH OWNER PRIOR TO ANY WORK ACTIVITIES




A

G-003

PARTIAL SITE MAP  
SCALE: N.T.S.

Issued for Revision:



TECHNICAL  
ASSURANCE

High Performance Building Enclosure Experts

Cleveland | Indianapolis | Knoxville | Raleigh

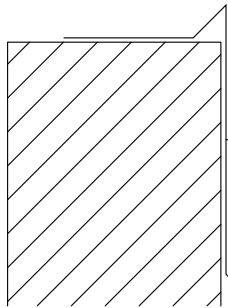
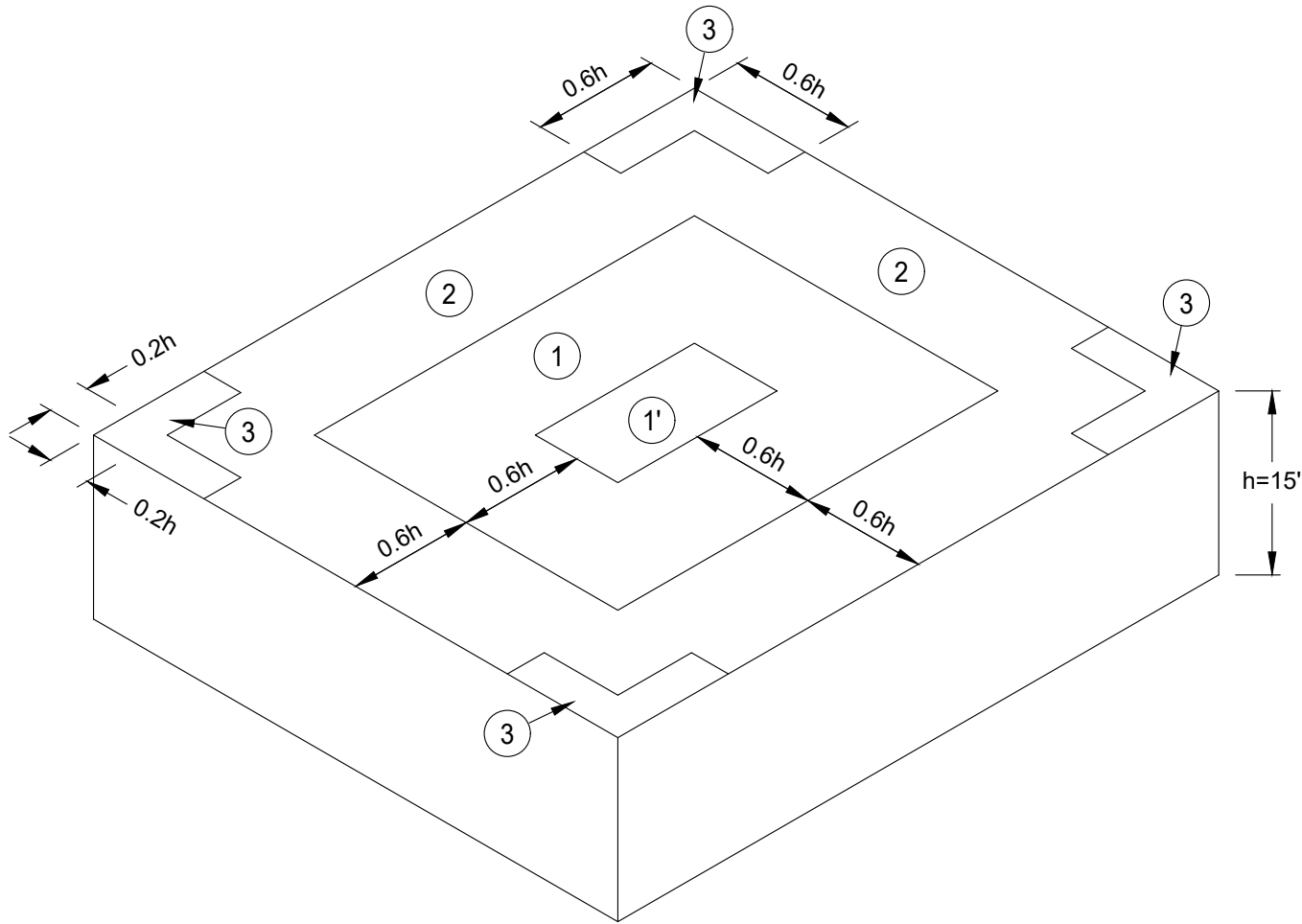
SOUTH PUTNAM COMMUNITY SCHOOL CORPORATION  
SOUTH PUTNAM HIGH SCHOOL AND CENTRAL ELEMENTARY SCHOOL  
ROOF REPLACEMENT PROJECT  
GREENCASTLE, IN  
PARTIAL SITE PLAN

Drawn By:  
JB  
Checked By:  
JSG  
Date  
04/18/24  
Scale:  
AS SHOWN

Sheet No.  
**G-003**

WIND CALCULATION

WIND UPLIFT PRESSURE CALCULATION FOR GREENCASTLE, IN 46135 CALCULATED PER AMERICAN SOCIETY OF CIVIL ENGINEERS (ASCE) STANDARD ASCE 7-16, RATINGS CALCULATOR EXPOSURE C, RISK CATEGORY III; DESIGN WIND SPEED: 115 MPH			
ZONE 1'	ZONE 1	ZONE 2	ZONE 3
31.7 POUNDS PER SQUARE FOOT (PSF)	55 POUNDS PER SQUARE FOOT (PSF)	72.6 POUNDS PER SQUARE FOOT (PSF)	98.9 POUNDS PER SQUARE FOOT (PSF)



ZONE 4 (PERIMETER) = 38.5 POUNDS PER SQUARE FOOT  
ZONE 5 (CORNERS) = 46.3 POUNDS PER SQUARE FOOT

RE-2, "TEST METHOD FOR DEPENDENTLY OR INDEPENDENTLY  
TERMINATED ROOF MEMBRANE SYSTEMS"

RE-2, TEST RESISTANCES TO HORIZONTAL (OUTWARD FROM BUILDING FACE) LOADS FOR GRAVEL STOPS OR FASCIAS.

R-002.DWG JBUNTING 4/18/2024 3:42 PM

Issued for Revision:

TECHNICAL  
ASSURANCE

HIGH PERFORMANCE BUILDING ENCLOSURE EXPERTS

Cleveland | Indianapolis | Knoxville | Raleigh

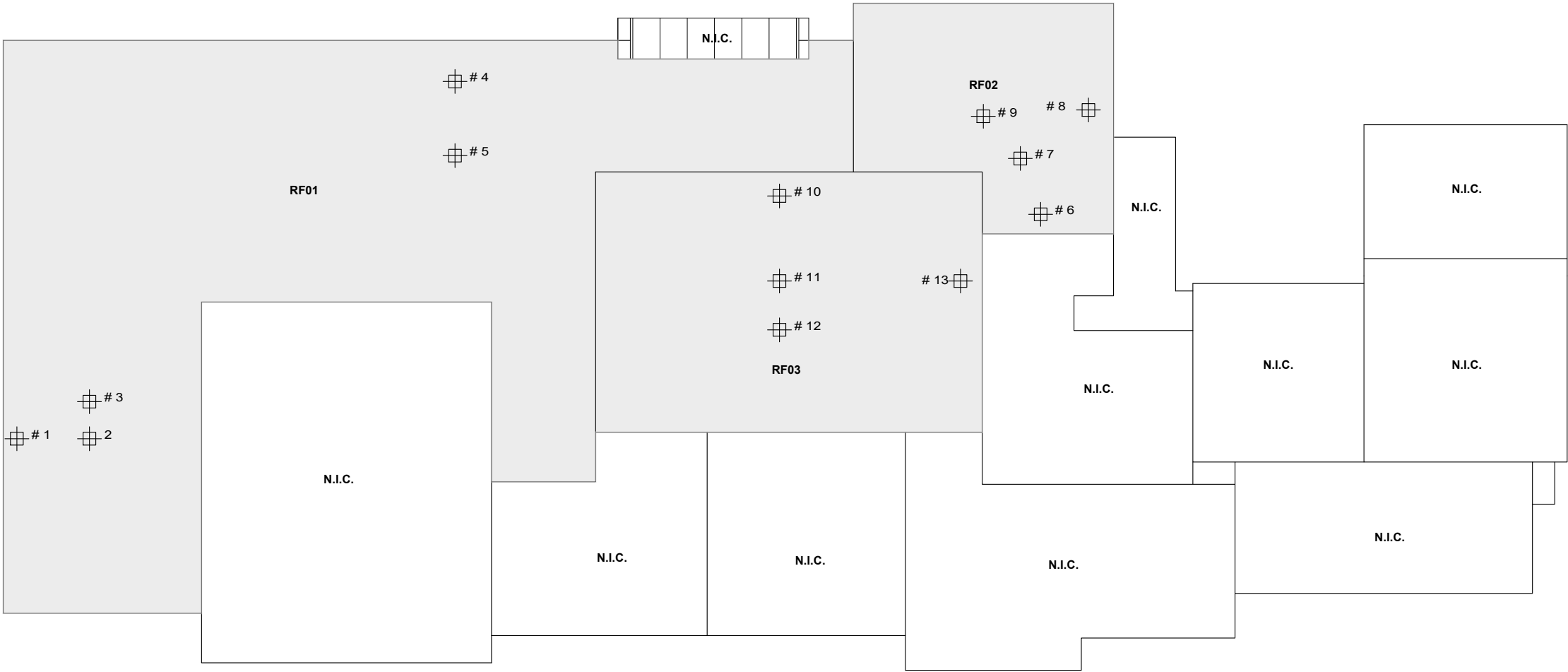
SOUTH PUTNAM COMMUNITY SCHOOL CORPORATION  
SOUTH PUTNAM HIGH SCHOOL AND CENTRAL ELEMENTARY SCHOOL  
ROOF REPLACEMENT PROJECT  
GREENCASTLE, IN  
WIND CALCULATIONS

Drawn By:  
JB  
Checked By:  
JSG  
Date  
04/18/24  
Scale:  
AS SHOWN

Sheet No.  
G-004



R-002.DWG JBUNTING 4/18/2024 3:43 PM



**A**  
G-005  
**KEY PLAN-SOUTH PUTNAM HIGH SCHOOL**  
SCALE: N.T.S.

**BUILDING LEGEND**

- BASE BID: ROOF AREAS - RF01, RF02, AND RF03
- CORE CUT LOCATIONS  
REFER TO SHEET G-005 FOR EXISTING ASSEMBLY DATA

**EXISTING ROOF CONSTRUCTION**

CONTRACTOR RESPONSIBLE FOR VERIFICATION OF ALL AS-BUILT CONDITIONS. REFER TO ROOFING KEY PLAN (SHEET 7) FOR CORE CUT LOCATIONS.

- RF01 - CORE CUT #1
  - 2-INCH SPRAY POLYURETHANE FOAM (SPF)
  - 1/2-INCH WOOD FIBER
  - LIGHTWEIGHT CONCRETE
- RF01 - CORE CUT #2
  - 2-1/2-INCH SPRAY POLYURETHANE FOAM (SPF)
  - 1/2-INCH WOOD FIBER
  - LIGHTWEIGHT CONCRETE
- RF01 - CORE CUT #3
  - 2-1/2-INCH SPRAY POLYURETHANE FOAM (SPF)
  - 1/2-INCH WOOD FIBER
  - LIGHTWEIGHT CONCRETE
- RF01 - CORE CUT #4
  - 2-1/2-INCH SPRAY POLYURETHANE FOAM (SPF)
  - 1/2-INCH WOOD FIBER
  - LIGHTWEIGHT CONCRETE
- RF01 - CORE CUT #5
  - 2-1/2-INCH SPRAY POLYURETHANE FOAM (SPF)
  - 1/2-INCH WOOD FIBER
  - LIGHTWEIGHT CONCRETE
- RF02 - CORE CUT #6
  - 2-1/4-INCH SPRAY POLYURETHANE FOAM (SPF)
  - 1/2-INCH WOOD FIBER
  - 3-INCH EXTRUDED POLYSTYRENE (XPS)
  - LIGHTWEIGHT CONCRETE
- RF02 - CORE CUT #7 - WET
  - 2-1/4-INCH SPRAY POLYURETHANE FOAM (SPF)
  - 1/2-INCH WOOD FIBER
  - 3-INCH EXTRUDED POLYSTYRENE (XPS)
  - LIGHTWEIGHT CONCRETE
- RF02 - CORE CUT #8
  - 3-INCH SPRAY POLYURETHANE FOAM (SPF)
  - 1/2-INCH WOOD FIBER
  - 3-INCH EXTRUDED POLYSTYRENE (XPS)
  - LIGHTWEIGHT CONCRETE
- RF02 - CORE CUT #9
  - 2-INCH SPRAY POLYURETHANE FOAM (SPF)
  - 1/2-INCH WOOD FIBER
  - 3-INCH EXTRUDED POLYSTYRENE (XPS)
  - LIGHTWEIGHT CONCRETE
- RF03 - CORE CUT #10
  - 2-3/4-INCH SPRAY POLYURETHANE FOAM (SPF)
  - 1/2-INCH WOOD FIBER
  - 3-INCH EXTRUDED POLYSTYRENE (XPS)
  - LIGHTWEIGHT CONCRETE
- RF03 - CORE CUT #11
  - 2-3/4-INCH SPRAY POLYURETHANE FOAM (SPF)
  - 1/2-INCH WOOD FIBER
  - 3-INCH EXTRUDED POLYSTYRENE (XPS)
  - LIGHTWEIGHT CONCRETE
- RF03 - CORE CUT #12
  - 2-3/4-INCH SPRAY POLYURETHANE FOAM (SPF)
  - 1/2-INCH WOOD FIBER
  - 3-INCH EXTRUDED POLYSTYRENE (XPS)
  - LIGHTWEIGHT CONCRETE
- RF03 - CORE CUT #13
  - 2-3/4-INCH SPRAY POLYURETHANE FOAM (SPF)
  - 1/2-INCH WOOD FIBER
  - 3-INCH EXTRUDED POLYSTYRENE (XPS)
  - LIGHTWEIGHT CONCRETE

Issued for Revision:

2	ADDENDUM NO 2
04/18/24	

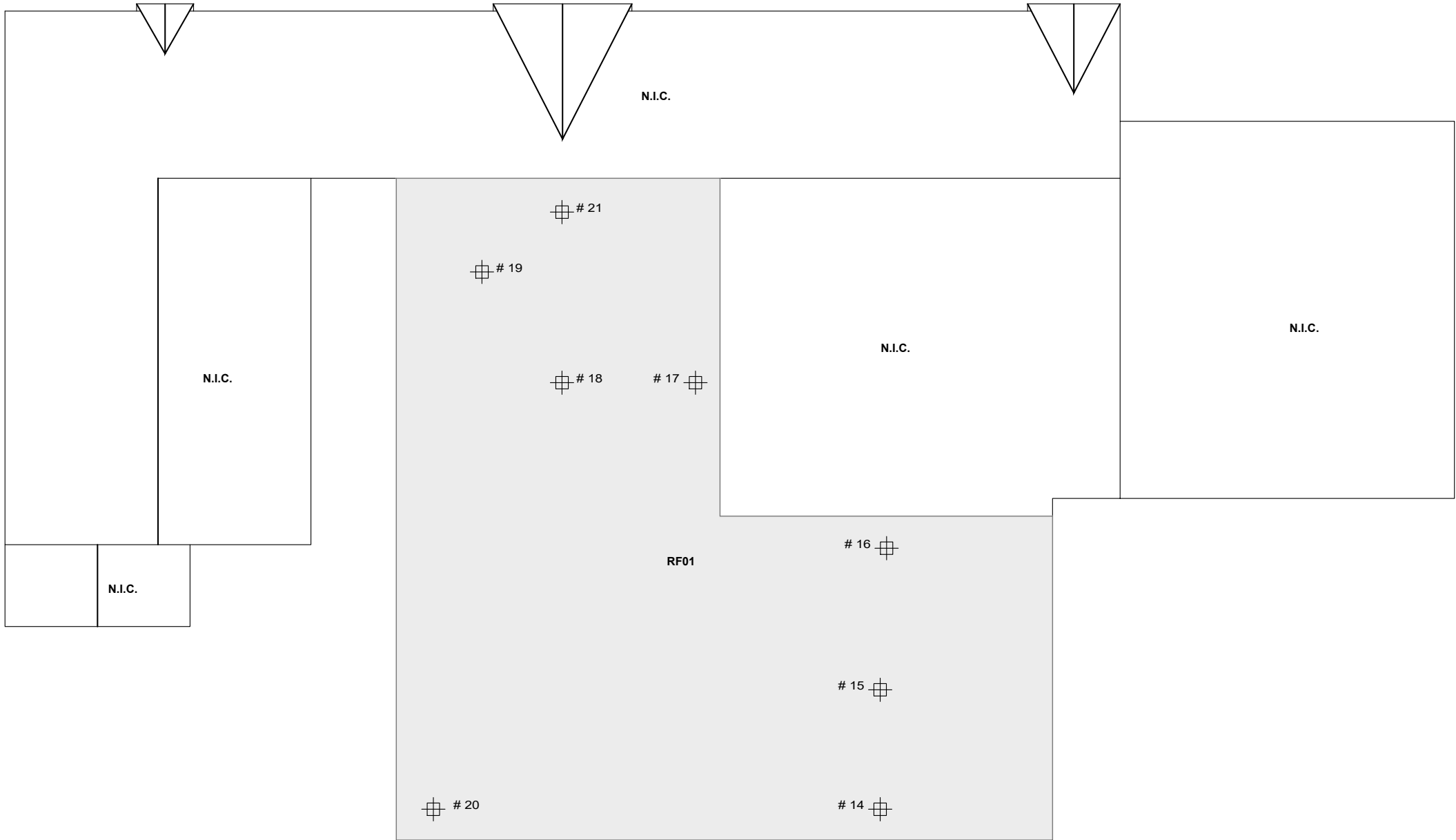


**SOUTH PUTNAM COMMUNITY SCHOOL CORPORATION**  
**SOUTH PUTNAM HIGH SCHOOL AND CENTRAL ELEMENTARY SCHOOL**  
**ROOF REPLACEMENT PROJECT**  
**GREENCASTLE, IN**  
**CORE CUT LOCATIONS**

Drawn By:  
JB  
Checked By:  
JSG  
Date  
04/18/24  
Scale:  
AS SHOWN

Sheet No.  
**G-005**

R-002.DWG JBUNTING 4/18/2024 3:42 PM



A  
G-006

KEY PLAN-SOUTH PUTNM CENTRAL ELEMENTARY SCHOOL  
SCALE: N.T.S.



#### BUILDING LEGEND

- BASE BID: ROOF AREAS - RF01
- CORE CUT LOCATIONS  
REFER TO SHEET G-005 FOR EXISTING ASSEMBLY DATA

#### EXISTING ROOF CONSTRUCTION

CONTRACTOR RESPONSIBLE FOR VERIFICATION OF ALL AS-BUILT CONDITIONS. REFER TO ROOFING KEY PLAN (SHEET 7) FOR CORE CUT LOCATIONS.

- RF01 - CORE CUT #14
- 2-INCH SPRAY POLYURETHANE FOAM (SPF)
  - 1/2-INCH WOOD FIBER
  - ETHYLENE PROPYLENE DIENE MONOMER (EPDM)
  - 1-1/2-INCH EXTRUDED POLYSTYRENE (XPS)
  - 1-1/2-INCH EXTRUDED POLYSTYRENE (XPS)
  - 1/2-INCH GYPSUM
  - LIGHTWEIGHT CONCRETE

- RF01 - CORE CUT #15
- 2-INCH SPRAY POLYURETHANE FOAM (SPF)
  - 1/2-INCH WOOD FIBER
  - ETHYLENE PROPYLENE DIENE MONOMER (EPDM)
  - 1-1/2-INCH EXTRUDED POLYSTYRENE (XPS)
  - 1-1/2-INCH EXTRUDED POLYSTYRENE (XPS)
  - 1/2-INCH GYPSUM
  - LIGHTWEIGHT CONCRETE

- RF01 - CORE CUT #16
- 2-1/4-INCH SPRAY POLYURETHANE FOAM (SPF)
  - 1/2-INCH WOOD FIBER
  - ETHYLENE PROPYLENE DIENE MONOMER (EPDM)
  - 1-1/2-INCH EXTRUDED POLYSTYRENE (XPS)
  - 1-1/2-INCH EXTRUDED POLYSTYRENE (XPS)
  - 1/2-INCH GYPSUM
  - LIGHTWEIGHT CONCRETE

- RF01 - CORE CUT #17
- 2-1/4-INCH SPRAY POLYURETHANE FOAM (SPF)
  - 1/2-INCH WOOD FIBER
  - ETHYLENE PROPYLENE DIENE MONOMER (EPDM)
  - 1-1/2-INCH EXTRUDED POLYSTYRENE (XPS)
  - 1-1/2-INCH EXTRUDED POLYSTYRENE (XPS)
  - 1/2-INCH GYPSUM
  - LIGHTWEIGHT CONCRETE

- RF01 - CORE CUT #18
- 3-INCH SPRAY POLYURETHANE FOAM (SPF)
  - 1/2-INCH WOOD FIBER
  - ETHYLENE PROPYLENE DIENE MONOMER (EPDM)
  - 1-1/2-INCH EXTRUDED POLYSTYRENE (XPS)
  - 1-1/2-INCH EXTRUDED POLYSTYRENE (XPS)
  - 1/2-INCH GYPSUM
  - LIGHTWEIGHT CONCRETE

- RF01 - CORE CUT #19
- 3-1/2-INCH SPRAY POLYURETHANE FOAM (SPF)
  - 1/2-INCH WOOD FIBER
  - ETHYLENE PROPYLENE DIENE MONOMER (EPDM)
  - 1-1/2-INCH EXTRUDED POLYSTYRENE (XPS)
  - 1-1/2-INCH EXTRUDED POLYSTYRENE (XPS)
  - 1/2-INCH GYPSUM
  - LIGHTWEIGHT CONCRETE

- RF01 - CORE CUT #20
- 2-1/4-INCH SPRAY POLYURETHANE FOAM (SPF)
  - 1/2-INCH WOOD FIBER
  - ETHYLENE PROPYLENE DIENE MONOMER (EPDM)
  - 1-1/2-INCH EXTRUDED POLYSTYRENE (XPS)
  - 1-1/2-INCH EXTRUDED POLYSTYRENE (XPS)
  - 1/2-INCH GYPSUM
  - LIGHTWEIGHT CONCRETE

- RF01 - CORE CUT #21
- 3-INCH SPRAY POLYURETHANE FOAM (SPF)
  - 1/2-INCH WOOD FIBER
  - DIMENSIONAL LUMBER

#### Issued for Revision:

2	ADDENDUM NO 2
04/18/24	



SOUTH PUTNAM COMMUNITY SCHOOL CORPORATION  
SOUTH PUTNAM HIGH SCHOOL AND CENTRAL ELEMENTARY SCHOOL  
ROOF REPLACEMENT PROJECT  
GREENCASTLE, IN  
CORE CUT LOCATIONS

Drawn By:

JB

Checked By:

JSG

Date

04/18/24

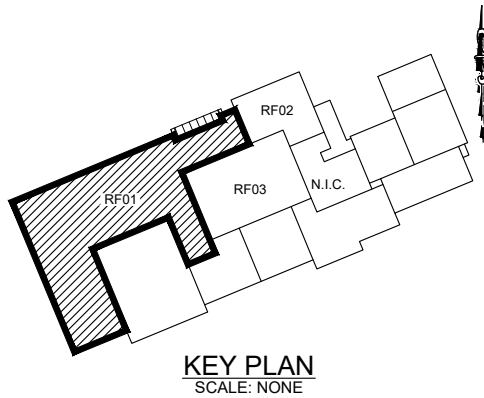
Scale:

AS SHOWN

Sheet No.

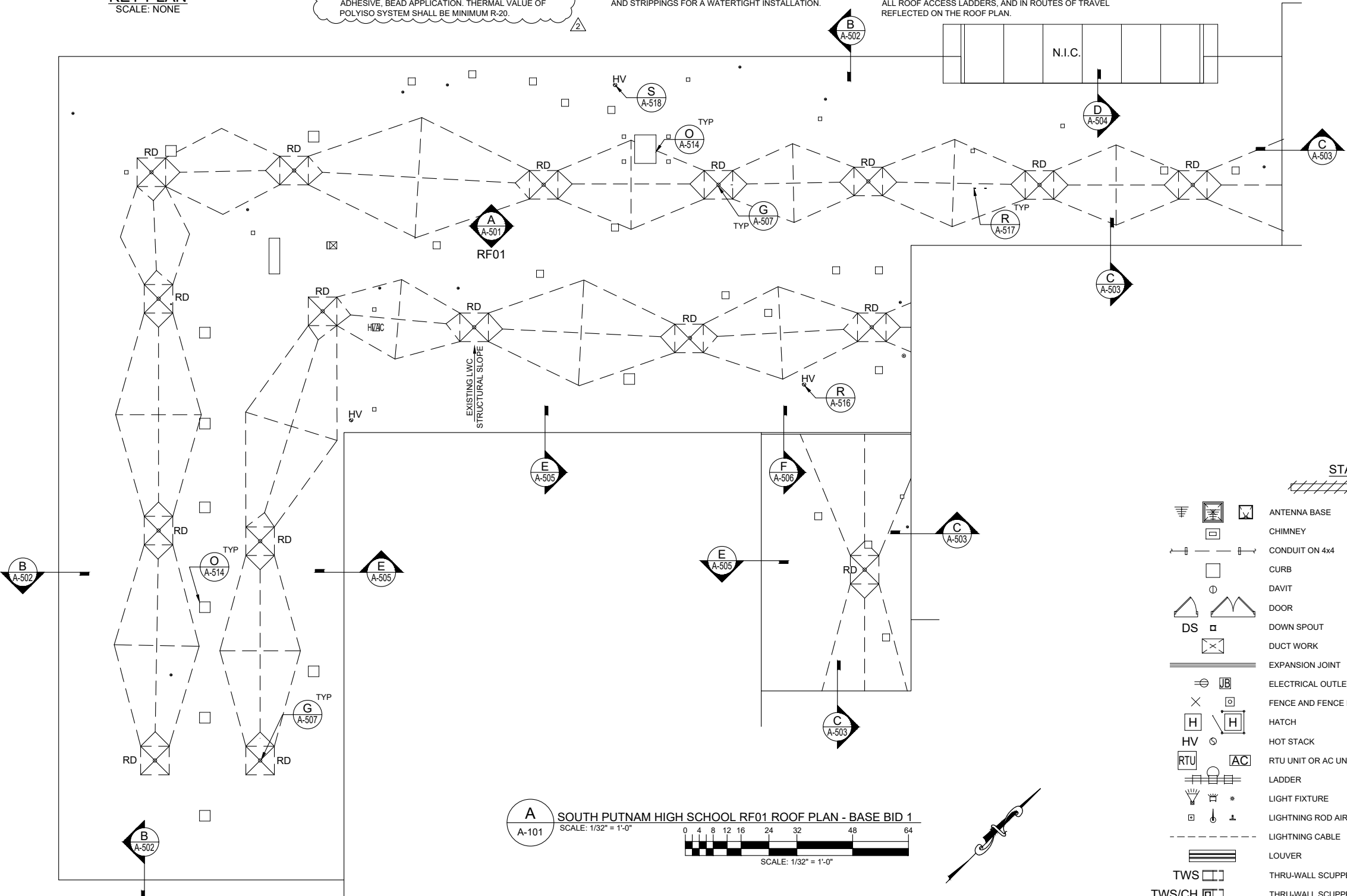
G-006

R-10-PLANS.DWG JBUNTING 4/18/2024 3:43 PM



GENERAL CONSTRUCTION NOTES

- A. REMOVE EXISTING ROOF SYSTEM DOWN TO THE EXISTING LIGHTWEIGHT CONCRETE SUBSTRATE(S). CLEAN SUBSTRATES FREE OF ALL MOISTURE, DIRT, DEBRIS AND DELETERIOUS MATERIALS.
- B. REMOVALS INCLUDE BUT ARE NOT LIMITED TO: SPRAY POLYURETHANE FOAM, WOOD FIBER BOARD, UNDERLYING WOOD BLOCKING, COMPOSITION FLASHINGS, METAL FLASHINGS, PERIMETER METAL FLASHINGS, ROOF DRAIN HARDWARE, ETC., DOWN TO THE LIGHTEIGHT CONCRETE SUBSTRATE.
- C. REPAIR LIGHTWEIGHT CONCRETE AS REQUIRED FOR INSTALLATION OF NEW ROOF SYSTEM.
- D. PROVIDE MECHANICALLY-ATTACHED BASE SHEET.
- E. PROVIDE POLYISOCYANURATE INSULATION SYSTEM. INSTALL INSULATION IN LOW RISE POLYURETHANE FOAM ADHESIVE, BEAD APPLICATION. THERMAL VALUE OF POLYISO SYSTEM SHALL BE MINIMUM R-20.
- F. PROVIDE TAPERED INSULATION SYSTEM TO MITIGATE THE LONG-TERM COLLECTION OF WATER ON THE FINISHED ROOF SURFACE. TAPERED INSULATION (FIELD, SADDLES AND CRICKETS, ETC.) SHALL BE INSTALLED TO DIRECT WATER TO DRAINAGE COMPONENTS. ROOF DRAINS AND SCUPPERS SHALL BE RECESSED/SUMPED, AND SADDLES/CRICKETS SHALL BE INSTALLED ON THE UPSLOPE SIDE OF ALL PENETRATIONS EXCEEDING A DIMENSION GREATER THAN 18-INCHES; SADDLE/CRICKET SLOPE SHALL BE DOUBLE THE FINISHED SLOPE IN THE FIELD OF THE ROOF AREA. A TAPERED EDGE STRIP SHALL BE INSTALLED AT THE TOE OF ALL SADDLES AND CRICKETS.
- G. PROVIDE NEW GYPSUM-BASED COVER BOARD INSULATION TO COVER PREPARED POLYISOCYANURATE INSULATION SUBSTRATE.
- H. PROVIDE NEW PVC SINGLE-PLY MEMBRANE, FLASHINGS, AND STRIPPINGS FOR A WATERTIGHT INSTALLATION.
- I. PROVIDE NEW SHEET METAL FLASHINGS, COUNTERFLASHINGS, RAIN COLLARS AND CLOSURES.
- J. ROOF DRAIN(S):  
a. PROVIDE AND INSTALL ALL NEW DRAIN INSERTS, INCLUDING NEW BOLTS, RINGS, AND CAST-IRON STRAINERS.  
b. CONTRACTOR SHALL ENSURE ALL DRAINS LINES ARE UNCLOGGED, FUNCTIONAL, IN GOOD CONDITION, AND ARE IN GOOD WORKING ORDER AT THE BEGINNING AND END OF THE PROJECT.  
c. CAUTION SHALL BE TAKEN DURING ALL CONSTRUCTION ACTIVITIES TO ELIMINATE ANY CONSTRUCTION DEBRIS FROM ENTERING INTO THE DRAIN LINES.
- K. PROVIDE NEW MEMBRANE WALKWAY PADS AROUND ALL SERVICEABLE ROOFTOP UNITS, BENEATH ALL SET-ON EQUIPMENT/COMPONENTS, AT THE TOP AND BOTTOM OF ALL ROOF ACCESS LADDERS, AND IN ROUTES OF TRAVEL REFLECTED ON THE ROOF PLAN.
- L. PROVIDE CONTRACTOR'S 2-YEAR GUARANTEE.
- M. PROVIDE MANUFACTURER'S 20-YEAR LABOR AND MATERIAL WARRANTY.



EXISTING ROOF CONSTRUCTION

- SPRAY-APPLIED POLYURETHANE FOAM (SPF)
- 1/2-INCH WOOD FIBER COVER BOARD
- SLOPED LIGHTWEIGHT CONCRETE
- CORRUGATED METAL FORM DECK

PROPOSED ROOF CONSTRUCTION

- ADHERED PVC MEMBRANE
- ADHERED 1/2-INCH GYPSUM COVER BOARD
- ADHERED R-20 POLYISO FLAT STOCK INSULATION (TWO 2-INCH THICK LAYERS)
- MECHANICALLY-ATTACHED BASE SHEET
- EXISTING SLOPED LIGHTWEIGHT CONCRETE
- EXISTING CORRUGATED METAL FORM DECK

STANDARD ROOF LEGEND

= ITEMS TO BE REMOVED	
	ANTENNA BASE
	CHIMNEY
	CONDUIT ON 4x4
	CURB
	DAVIT
	DOOR
	DOWN SPOUT
	DUCT WORK
	EXPANSION JOINT
	ELECTRICAL OUTLET - JUNCTION BOX
	FENCE AND FENCE POST BASE
	HATCH
	HOT STACK
	RTU UNIT OR AC UNIT
	LADDER
	LIGHT FIXTURE
	LIGHTNING ROD AIR TERMINALS
	LIGHTNING CABLE
	LOUVER
	THRU-WALL SCUPPER
	THRU-WALL SCUPPER CONDUCTOR HEAD
	PIPE PENETRATION
	PITCH POCKET
	PORTAL CURB
	RAIL BASE
	RAIL CURB
	ROOF DRAIN - OVERFLOW DRAIN
	WALL DRAIN - ROOF FLOOR DRAIN
	SATELLITE DISH
	SKYLIGHT
	SOIL STACK
	SPLASH BLOCK
	STRUCTURAL PEN. AND SUPPORT LEG
	TIE-OFF
	UNIT ON 4x4
	VENT - GRAVITY AND GOOSE NECK
	VENT - MECHANICAL
	CORE CUT - INFORMATION
	NEW WALKWAY
	ADJOINING BUILDING

A SOUTH PUTNAM HIGH SCHOOL RF01 ROOF PLAN - BASE BID 1  
SCALE: 1/32" = 1'-0"  
0 4 8 12 16 24 32 48 64  
SCALE: 1/32" = 1'-0"

Issued for Revision:

2 ADDENDUM NO 2

04/18/24

TECHNICAL  
ASSURANCE  
HIGH PERFORMANCE BUILDING ENCLOSURE EXPERTS  
Cleveland | Indianapolis | Knoxville | Raleigh

SOUTH PUTNAM COMMUNITY SCHOOL CORPORATION  
SOUTH PUTNAM HIGH SCHOOL AND CENTRAL ELEMENTARY SCHOOL  
ROOF REPLACEMENT PROJECT  
GREENCASTLE, IN  
SOUTH PUTNAM HIGH SCHOOL  
RF01 ROOF PLAN - BASE BID 1

Drawn By:

JB

Checked By:

JSG

Date

04/18/24

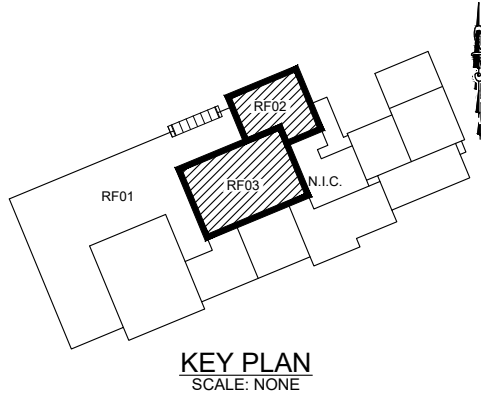
Scale:

AS SHOWN

Sheet No.

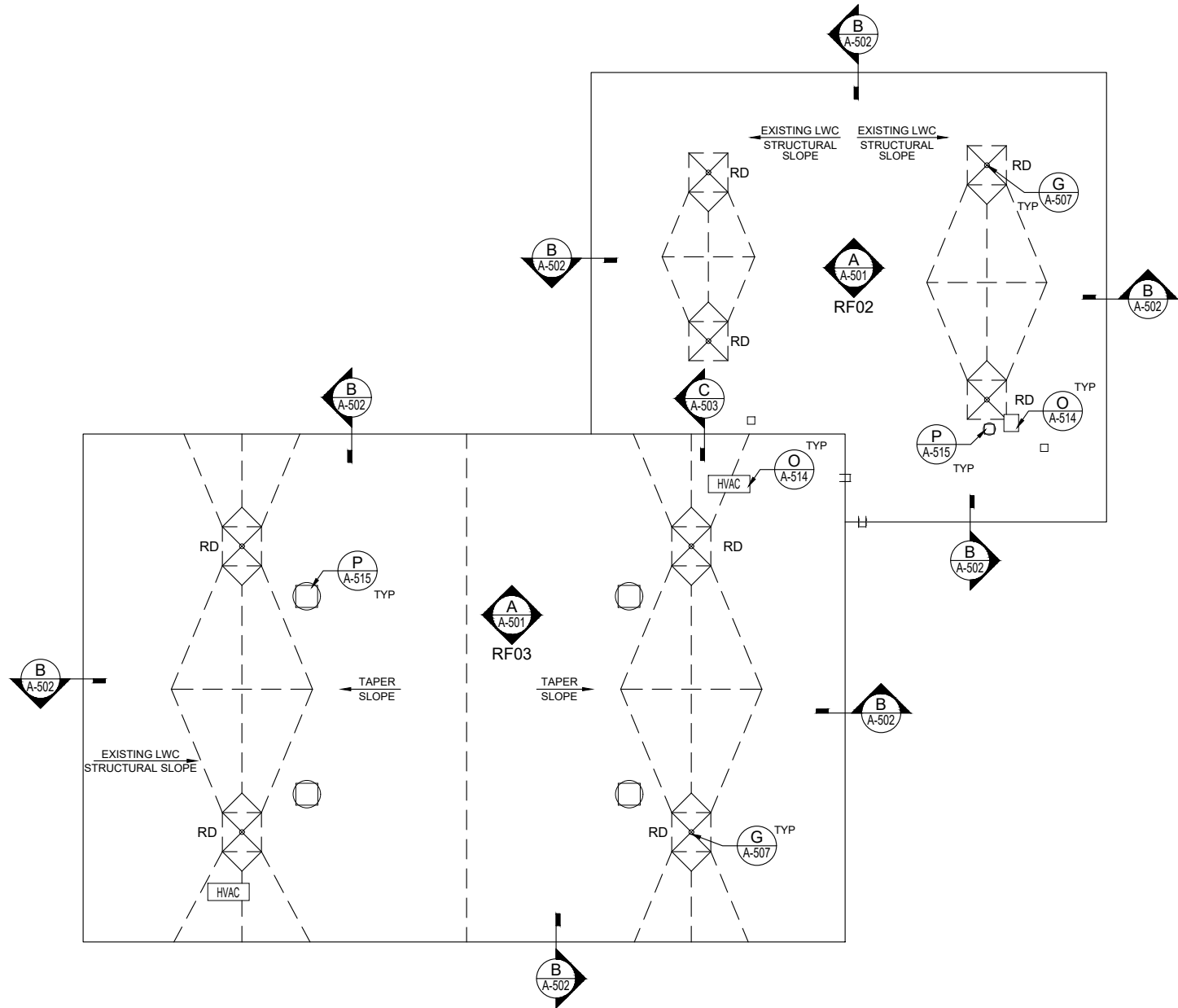
A-101

R-10-PLANS DWG JBUNTING 4/18/2024 3:42 PM



### GENERAL CONSTRUCTION NOTES

- A. REMOVE EXISTING ROOF SYSTEM DOWN TO THE EXISTING LIGHTWEIGHT CONCRETE SUBSTRATE(S). CLEAN SUBSTRATES FREE OF ALL MOISTURE, DIRT, DEBRIS AND DELETERIOUS MATERIALS.
- B. REMOVALS INCLUDE BUT ARE NOT LIMITED TO; SPRAY POLYURETHANE FOAM, WOOD FIBER BOARD, UNDERLYING WOOD BLOCKING, COMPOSITION FLASHINGS, METAL FLASHINGS, PERIMETER METAL FLASHINGS, ROOF DRAIN HARDWARE, ETC., DOWN TO THE LIGHTEIGHT CONCRETE SUBSTRATE.
- C. REPAIR LIGHTWEIGHT CONCRETE AS REQUIRED FOR INSTALLATION OF NEW ROOF SYSTEM.
- D. PROVIDE MECHANICALLY-ATTACHED BASE SHEET.
- E. PROVIDE POLYISOCYANURATE INSULATION SYSTEM. INSTALL INSULATION IN LOW RISE POLYURETHANE FOAM ADHESIVE, BEAD APPLICATION. THERMAL VALUE OF POLYISO SYSTEM SHALL BE MINIMUM R-20.
- F. PROVIDE TAPERED INSULATION SYSTEM TO MITIGATE THE LONG-TERM COLLECTION OF WATER ON THE FINISHED ROOF SURFACE. TAPERED INSULATION (FIELD, SADDLES AND CRICKETS, ETC.) SHALL BE INSTALLED TO DIRECT WATER TO DRAINAGE COMPONENTS. ROOF DRAINS AND SCUPPERS SHALL BE RECESSED/SUMPED, AND SADDLES/CRICKETS SHALL BE INSTALLED ON THE UPSLOPE SIDE OF ALL PENETRATIONS EXCEEDING A DIMENSION GREATER THAN 18-INCHES; SADDLE/CRICKET SLOPE SHALL BE DOUBLE THE FINISHED SLOPE IN THE FIELD OF THE ROOF AREA. A TAPERED EDGE STRIP SHALL BE INSTALLED AT THE TOE OF ALL SADDLES AND CRICKETS.
- G. PROVIDE NEW GYPSUM-BASED COVER BOARD INSULATION TO COVER PREPARED POLYISOCYANURATE INSULATION SUBSTRATE.
- H. PROVIDE NEW PVC SINGLE-PLY MEMBRANE, FLASHINGS, AND STRIPPINGS FOR A WATERTIGHT INSTALLATION.
- I. PROVIDE NEW SHEET METAL FLASHINGS, COUNTERFLASHINGS, RAIN COLLARS AND CLOSURES.
- J. ROOF DRAIN(S):
- PROVIDE AND INSTALL ALL NEW DRAIN INSERTS, INCLUDING NEW BOLTS, RINGS, AND CAST-IRON STRAINERS.
  - CONTRACTOR SHALL ENSURE ALL DRAINS LINES ARE UNCLOGGED, FUNCTIONAL, IN GOOD CONDITION, AND ARE IN GOOD WORKING ORDER AT THE BEGINNING AND END OF THE PROJECT.
  - CAUTION SHALL BE TAKEN DURING ALL CONSTRUCTION ACTIVITIES TO ELIMINATE ANY CONSTRUCTION DEBRIS FROM ENTERING INTO THE DRAIN LINES.
- K. PROVIDE NEW MEMBRANE WALKWAY PADS AROUND ALL SERVICEABLE ROOFTOP UNITS, BENEATH ALL SET-ON EQUIPMENT/COMPONENTS, AT THE TOP AND BOTTOM OF ALL ROOF ACCESS LADDERS, AND IN ROUTES OF TRAVEL REFLECTED ON THE ROOF PLAN.
- L. PROVIDE CONTRACTOR'S 2-YEAR GUARANTEE.
- M. PROVIDE MANUFACTURER'S 20-YEAR LABOR AND MATERIAL WARRANTY.



**A-102** SOUTH PUTNAM HIGH SCHOOL SCHOOL RF02, RF03 ROOF PLAN - BASE BID 2  
SCALE: 1/32" = 1'-0"  
SCALE: 1/32" = 1'-0"

### EXISTING ROOF CONSTRUCTION

- SPRAY-APPLIED POLYURETHANE FOAM (SPF)
- 1/2-INCH WOOD FIBER COVER BOARD
- SLOPED LIGHTWEIGHT CONCRETE
- CORRUGATED METAL FORM DECK

### PROPOSED ROOF CONSTRUCTION

- ADHERED PVC MEMBRANE
- ADHERED 1/2-INCH GYPSUM COVER BOARD
- ADHERED R-20 POLYISO FLAT STOCK INSULATION (TWO 2-INCH THICK LAYERS)
- MECHANICALLY-ATTACHED BASE SHEET
- EXISTING SLOPED LIGHTWEIGHT CONCRETE
- EXISTING CORRUGATED METAL FORM DECK

### STANDARD ROOF LEGEND

	ANTENNA BASE		PIPE PENETRATION
	CHIMNEY		PITCH POCKET
	CONDUIT ON 4x4		PORTAL CURB
	CURB		RAIL BASE
	DAVIT		RAIL CURB
	DOOR		ROOF DRAIN - OVERFLOW DRAIN
	DOWN SPOUT		WALL DRAIN - ROOF FLOOR DRAIN
	DUCT WORK		SATELLITE DISH
	EXPANSION JOINT		SKYLIGHT
	ELECTRICAL OUTLET - JUNCTION BOX		SOIL STACK
	FENCE AND FENCE POST BASE		SPLASH BLOCK
	HATCH		STRUCTURAL PEN. AND SUPPORT LEG
	HOT STACK		TIE-OFF
	RTU UNIT OR AC UNIT		UNIT ON 4x4
	LADDER		VENT - GRAVITY AND GOOSE NECK
	LIGHT FIXTURE		VENT - MECHANICAL
	LIGHTNING ROD AIR TERMINALS		CORE CUT - INFORMATION
	LIGHTNING CABLE		NEW WALKWAY
	LOUVER		ADJOINING BUILDING
	THRU-WALL SCUPPER		
	THRU-WALL SCUPPER CONDUCTOR HEAD		

Issued for Revision:

2 ADDENDUM NO 2

04/18/24



SOUTH PUTNAM COMMUNITY SCHOOL CORPORATION  
SOUTH PUTNAM HIGH SCHOOL AND CENTRAL ELEMENTARY SCHOOL  
ROOF REPLACEMENT PROJECT  
GREENCASTLE, IN  
SOUTH PUTNAM HIGH SCHOOL  
RF02 & RF03 ROOF PLAN - BASE BID 2

Drawn By:

JB

Checked By:

JSG

Date

04/18/24

Scale:

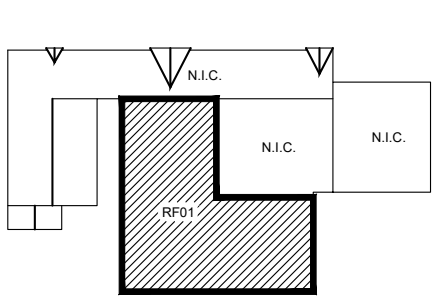
AS SHOWN

Sheet No.

**A-102**



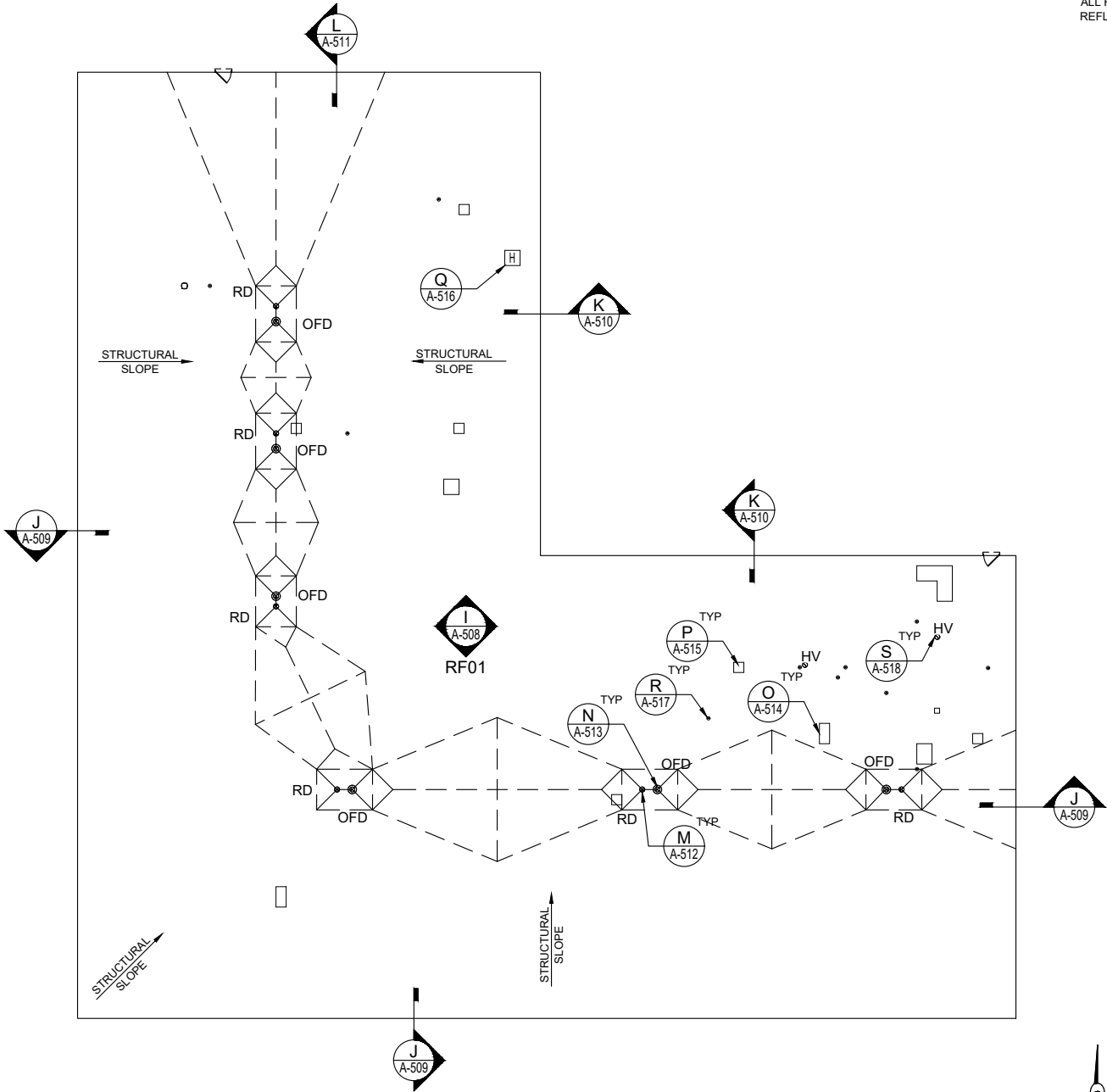
R-10-PLANS.DWG JBUNTING 4/18/2024 3:42 PM



KEY PLAN  
SCALE: NONE

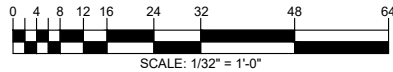
### GENERAL CONSTRUCTION NOTES

- A. REMOVE EXISTING ROOF SYSTEM DOWN TO THE EXISTING METAL DECK. CLEAN SUBSTRATES FREE OF ALL MOISTURE, DIRT, DEBRIS AND DELETERIOUS MATERIALS.
- B. REMOVALS INCLUDE BUT ARE NOT LIMITED TO; SPRAY POLYURETHANE FOAM, WOOD FIBER BOARD, EPDM MEMBRANE, XPS INSULATION, UNDERLYING WOOD BLOCKING, COMPOSITION FLASHINGS, METAL FLASHINGS, PERIMETER METAL FLASHINGS, ROOF DRAIN HARDWARE, ETC., DOWN TO THE METAL DECK.
- C. REPAIR METAL DECK AS REQUIRED FOR INSTALLATION OF NEW ROOF SYSTEM.
- D. PROVIDE MECHANICALLY-ATTACHED GYPSUM-BASED SUBSTRATE BOARD.
- E. PROVIDE ADHERED VAPOR RETARDER.
- F. PROVIDE POLYISOCYANURATE INSULATION SYSTEM. INSTALL INSULATION IN LOW RISE POLYURETHANE FOAM ADHESIVE. BEAD APPLICATION. THERMAL VALUE OF POLYISO SYSTEM SHALL BE MINIMUM R-20.
- G. PROVIDE TAPERED INSULATION SYSTEM TO MITIGATE THE LONG-TERM COLLECTION OF WATER ON THE FINISHED ROOF SURFACE. TAPERED INSULATION (FIELD, SADDLES AND CRICKETS, ETC.) SHALL BE INSTALLED TO DIRECT WATER TO DRAINAGE COMPONENTS. ROOF DRAINS AND SCUPPERS SHALL BE RECESSED/SUMPED, AND SADDLES/CRICKETS SHALL BE INSTALLED ON THE UPSLOPE SIDE OF ALL PENETRATIONS EXCEEDING A DIMENSION GREATER THAN 18-INCHES; SADDLE/CRICKET SLOPE SHALL BE DOUBLE THE FINISHED SLOPE IN THE FIELD OF THE ROOF AREA. A TAPERED EDGE STRIP SHALL BE INSTALLED AT THE TOE OF ALL SADDLES AND CRICKETS.
- H. PROVIDE NEW GYPSUM-BASED COVER BOARD INSULATION TO COVER PREPARED POLYISOCYANURATE INSULATION SUBSTRATE.
- I. PROVIDE NEW PVC SINGLE-PLY MEMBRANE, FLASHINGS, AND STRIPPINGS FOR A WATERTIGHT INSTALLATION.
- J. PROVIDE NEW SHEET METAL FLASHINGS, COUNTERFLASHINGS, RAIN COLLARS AND CLOSURES.
- K. ROOF DRAIN(S):
- PROVIDE AND INSTALL ALL NEW DRAIN INSERTS, INCLUDING NEW BOLTS, RINGS, AND CAST-IRON STRAINERS.
  - CONTRACTOR SHALL ENSURE ALL DRAINS LINES ARE UNCLOGGED, FUNCTIONAL, IN GOOD CONDITION, AND ARE IN GOOD WORKING ORDER AT THE BEGINNING AND END OF THE PROJECT.
  - CAUTION SHALL BE TAKEN DURING ALL CONSTRUCTION ACTIVITIES TO ELIMINATE ANY CONSTRUCTION DEBRIS FROM ENTERING INTO THE DRAIN LINES.
- L. PROVIDE NEW MEMBRANE WALKWAY PADS AROUND ALL SERVICEABLE ROOFTOP UNITS. BENEATH ALL SET-ON EQUIPMENT/COMPONENTS, AT THE TOP AND BOTTOM OF ALL ROOF ACCESS LADDERS, AND IN ROUTES OF TRAVEL REFLECTED ON THE ROOF PLAN.
- M. PROVIDE CONTRACTOR'S 2-YEAR GUARANTEE.
- N. PROVIDE MANUFACTURER'S 20-YEAR LABOR AND MATERIAL WARRANTY.



A CENTRAL ELEMENTARY SCHOOL RF01 ROOF PLAN-BASE BID 3

SCALE: 1/32" = 1'-0"



SCALE: 1/32" = 1'-0"

### EXISTING ROOF CONSTRUCTION

- SPRAY-APPLIED POLYURETHANE FOAM (SPF)
- 1/2-INCH WOOD FIBER COVER BOARD
- EPDM MEMBRANE
- 2 LAYERS OF 1.5-INCH EXTRUDED POLYSTYRENE (XPS-BLUEBOARD)
- 1/2-INCH GYPSUM SUBSTRATE BOARD
- STEEL DECK

### PROPOSED ROOF CONSTRUCTION

- ADHERED PVC MEMBRANE
- ADHERED 1/2-INCH GYPSUM COVER BOARD
- ADHERED R-20 POLYISO FLAT STOCK INSULATION (TWO 2-INCH THICK LAYERS)
- MECHANICALLY-ATTACHED 1/2-INCH GYPSUM SUBSTRATE BOARD
- EXISTING STEEL DECK

### STANDARD ROOF LEGEND

= ITEMS TO BE REMOVED	
	ANTENNA BASE
	CHIMNEY
	CONDUIT ON 4x4
	CURB
	DAVIT
	DOOR
	DOWN SPOUT
	DUCT WORK
	EXPANSION JOINT
	ELECTRICAL OUTLET - JUNCTION BOX
	FENCE AND FENCE POST BASE
	HATCH
	HOT STACK
	RTU UNIT OR AC UNIT
	LADDER
	LIGHT FIXTURE
	LIGHTNING ROD AIR TERMINALS
	LIGHTNING CABLE
	LOUVER
	THRU-WALL SCUPPER
	THRU-WALL SCUPPER CONDUCTOR HEAD
	PIPE PENETRATION
	PITCH POCKET
	PORTAL CURB
	RAIL BASE
	RAIL CURB
	ROOF DRAIN - OVERFLOW DRAIN
	WALL DRAIN - ROOF FLOOR DRAIN
	SATELLITE DISH
	SKYLIGHT
	SOIL STACK
	SPLASH BLOCK
	STRUCTURAL PEN. AND SUPPORT LEG
	TIE-OFF
	UNIT ON 4x4
	VENT - GRAVITY AND GOOSE NECK
	VENT - MECHANICAL
	CORE CUT - INFORMATION
	NEW WALKWAY
	ADJOINING BUILDING

Issued for Revision:

2 ADDENDUM NO 2

04/18/24



SOUTH PUTNAM COMMUNITY SCHOOL CORPORATION  
SOUTH PUTNAM HIGH SCHOOL AND CENTRAL ELEMENTARY SCHOOL  
ROOF REPLACEMENT PROJECT  
GREENCASTLE, IN  
CENTRAL ELEMENTARY SCHOOL  
RF01 ROOF PLAN - BASE BID 3

Drawn By:

JB

Checked By:

JSG

Date

04/18/24

Scale:

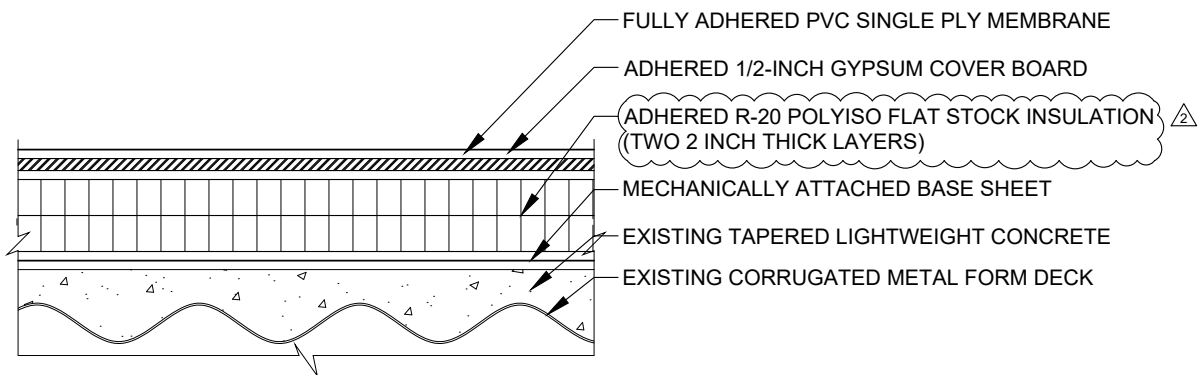
AS SHOWN

Sheet No.

A-103

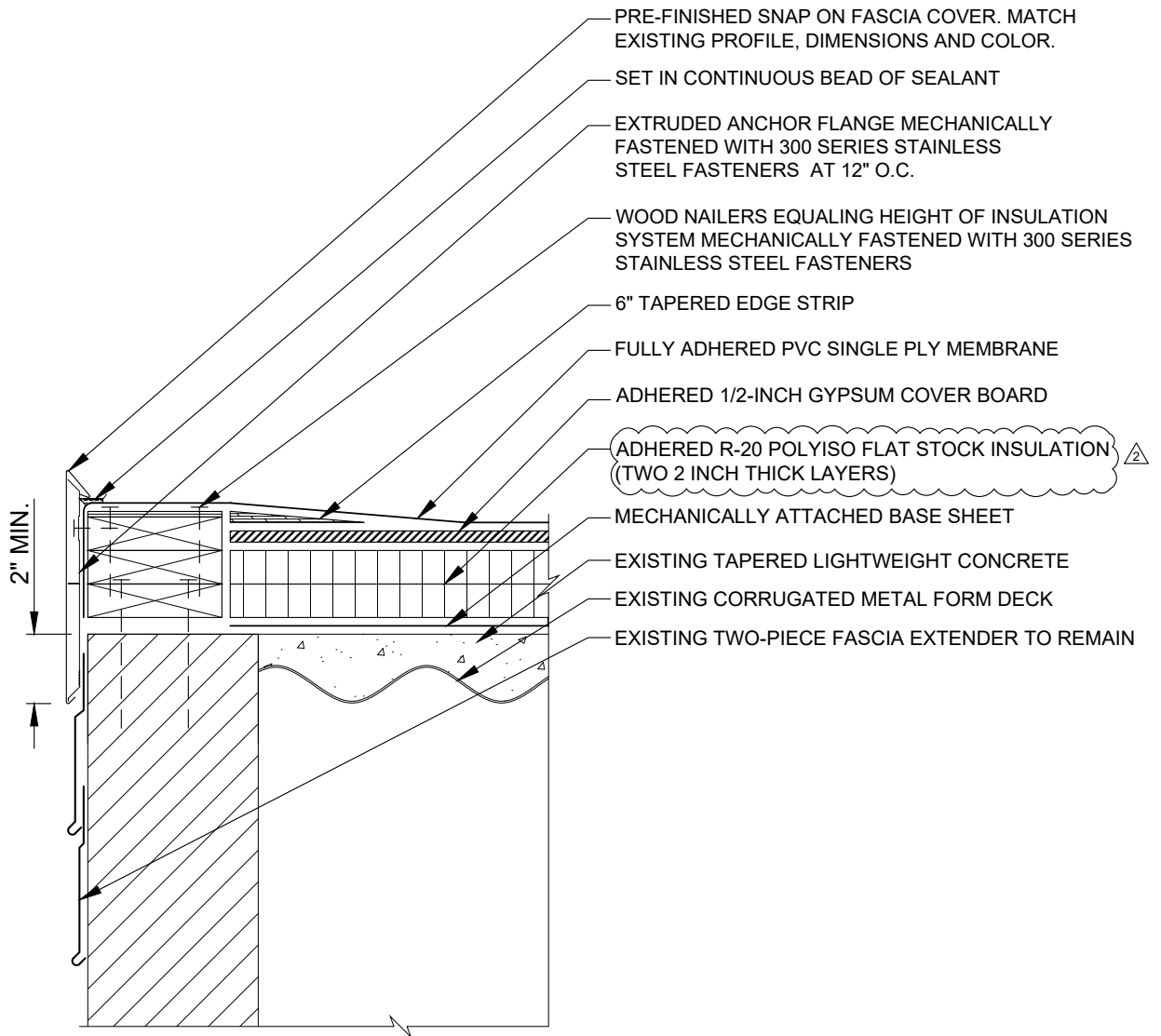
**NOTES:**

- BREAK ALL INSULATION JOINTS AT MINIMUM 12-INCHES
- INSTALL TAPERED INSULATION PANELS OVERTOP FLAT-STOCK INSULATION PANELS
- INSTALL TAPERED EDGE STRIP AT TOE OF ALL SADDLES AND CRICKETS



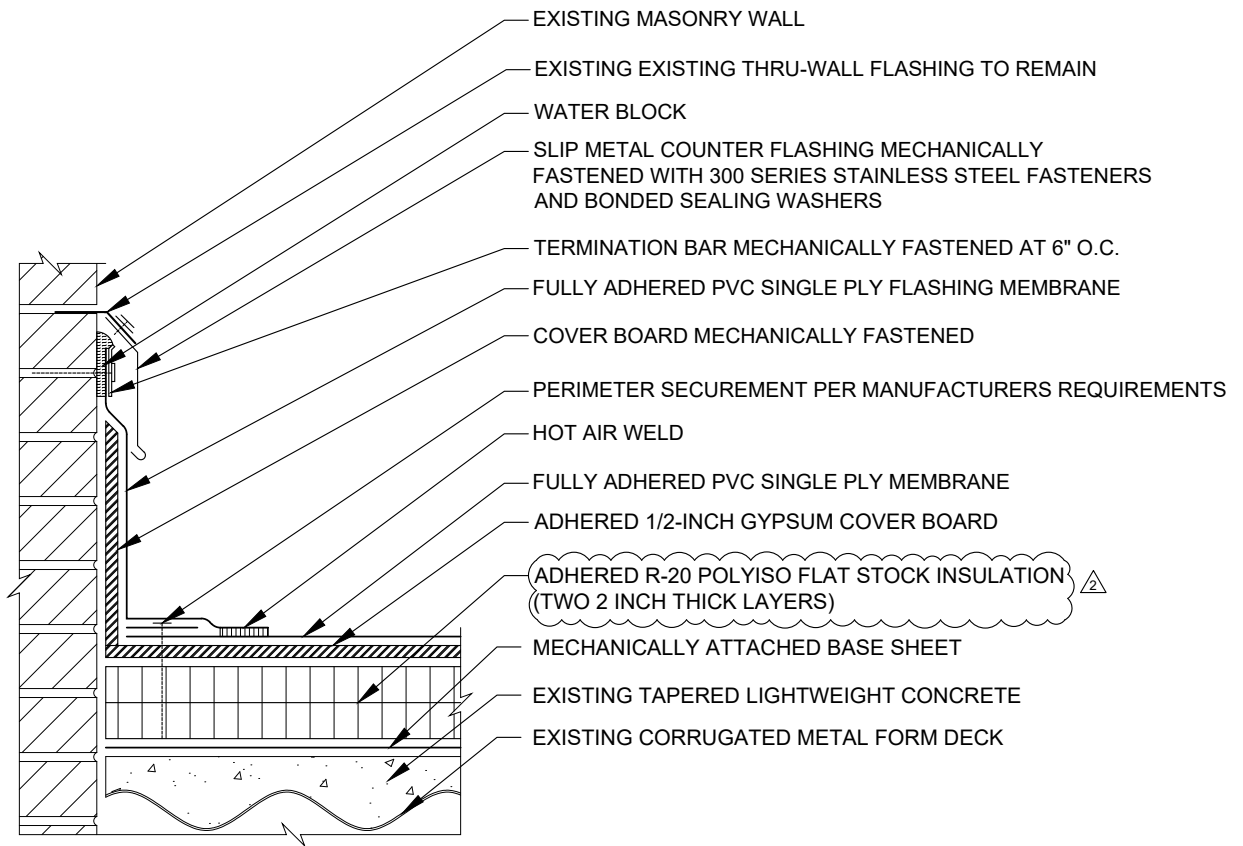
**A** NEW ROOF SYSTEM DETAIL  
A-501  
SCALE: NOT TO SCALE

R-50-DETAILS.DWG JBUNTING 4/18/2024 3:42 PM



**B** GRAVEL STOP DETAIL  
A-502 SCALE: NOT TO SCALE

R-50-DETAILS.DWG JBUNTING 4/18/2024 3:43 PM



C  
A-503

## WALL FLASHING DETAIL

SCALE: NOT TO SCALE



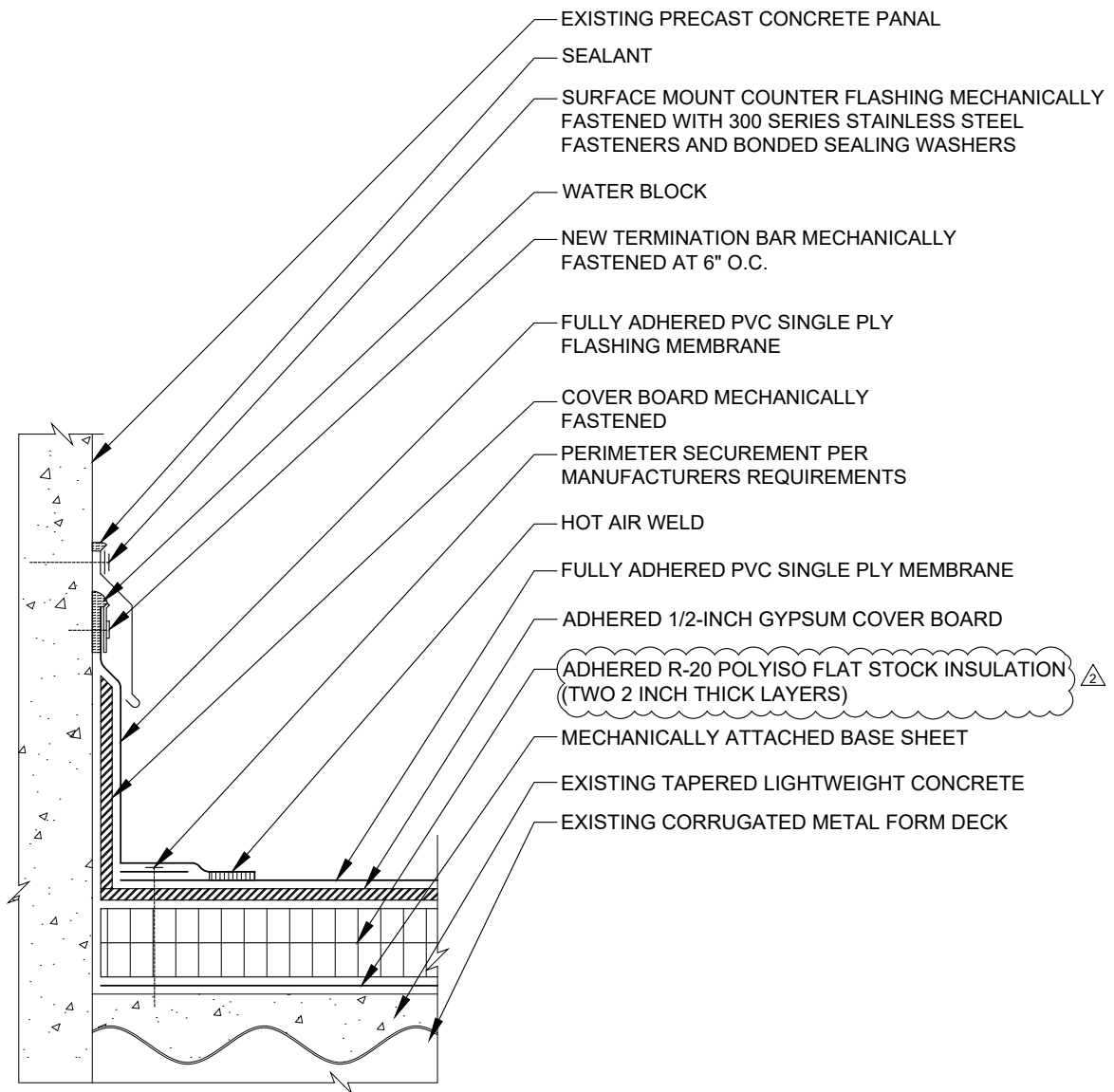
**SOUTH PUTNAM COMMUNITY SCHOOL CORPORATION  
SOUTH PUTNAM HIGH SCHOOL AND CENTRAL ELEMENTARY SCHOOL  
ROOF REPLACEMENT PROJECT  
ROOF DETAILS**

**Drawn By:** JB **Date:** 04/18/24  
**Checked By:** JSG **Scale:** AS\_SHOWN

**A-503**



R-50-DETAILS.DWG JBUNTING 4/18/2024 3:43 PM



D

WALL FLASHING DETAIL

A-504

SCALE: NOT TO SCALE



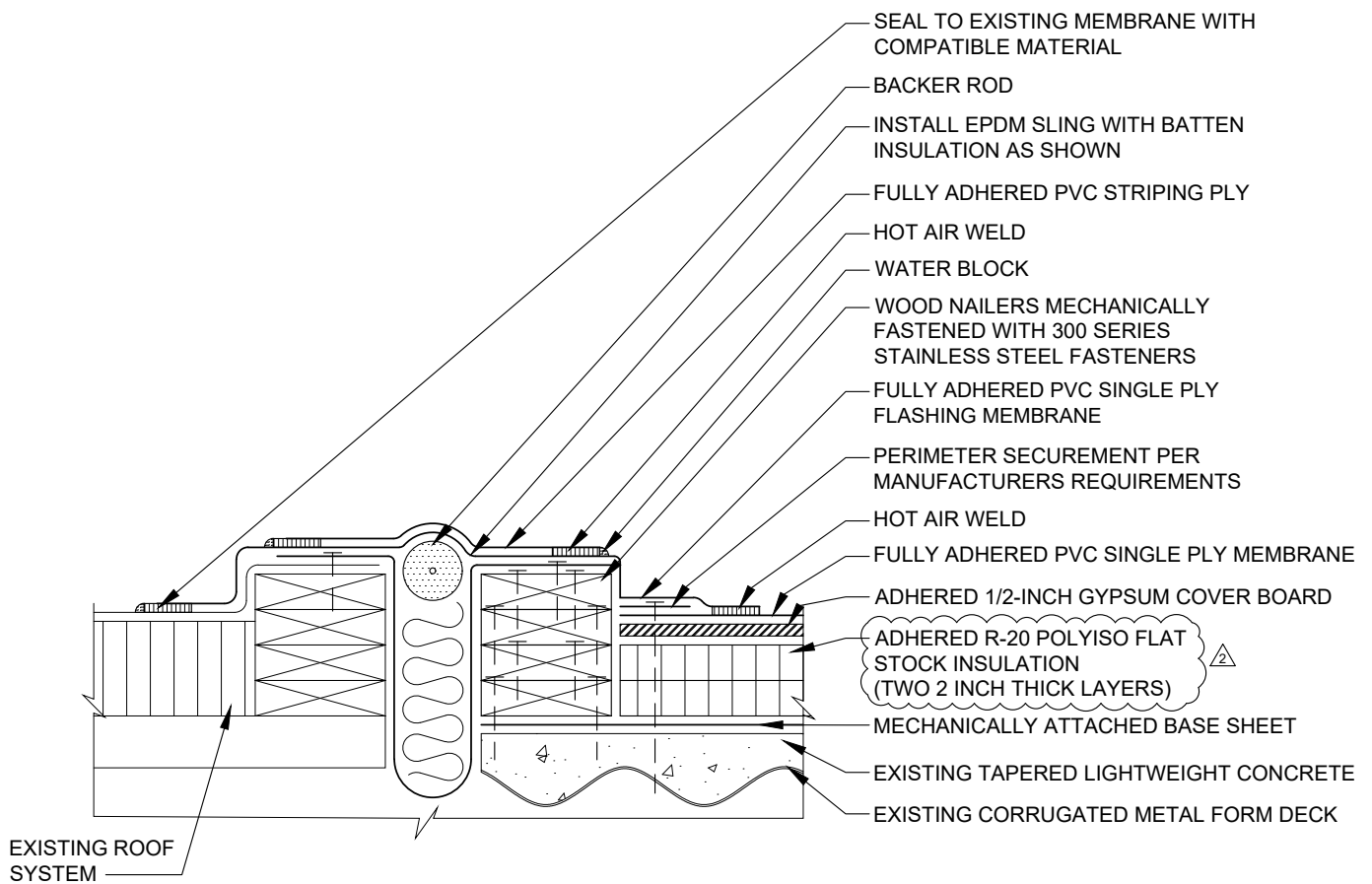
Cleveland | Indianapolis | Knoxville | Raleigh

**SOUTH PUTNAM COMMUNITY SCHOOL CORPORATION**  
**SOUTH PUTNAM HIGH SCHOOL AND CENTRAL ELEMENTARY SCHOOL**  
**ROOF REPLACEMENT PROJECT**  
**ROOF DETAILS**

**Drawn By:** JB **Date:** 04/18/24  
**Checked By:** JSG **Scale:** AS\_SHOWN

**A-504**

R-50-DETAILS.DWG JBUNTING 4/18/2024 3:43 PM



E

EXPANSION JOINT DETAIL

A-505

SCALE: NOT TO SCALE



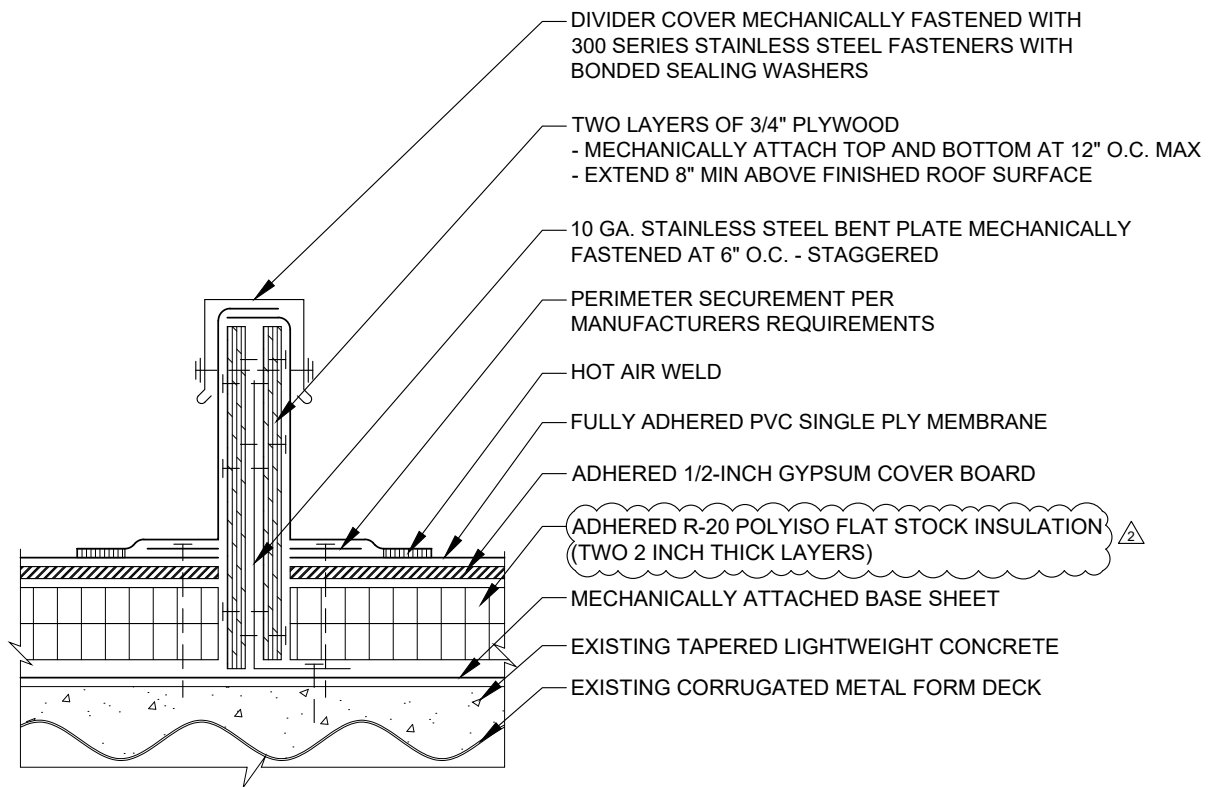
Cleveland | Indianapolis | Knoxville | Raleigh

SOUTH PUTNAM COMMUNITY SCHOOL CORPORATION  
SOUTH PUTNAM HIGH SCHOOL AND CENTRAL ELEMENTARY SCHOOL  
ROOF REPLACEMENT PROJECT  
ROOF DETAILS

Drawn By: JB Date: 04/18/24  
Checked By: JSG Scale: AS\_SHOWN

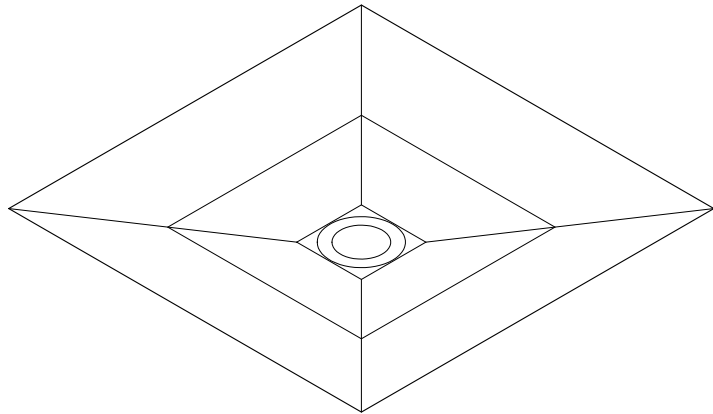
**A-505**

R-50-DETAILS.DWG JBUNTING 4/18/2024 3:42 PM

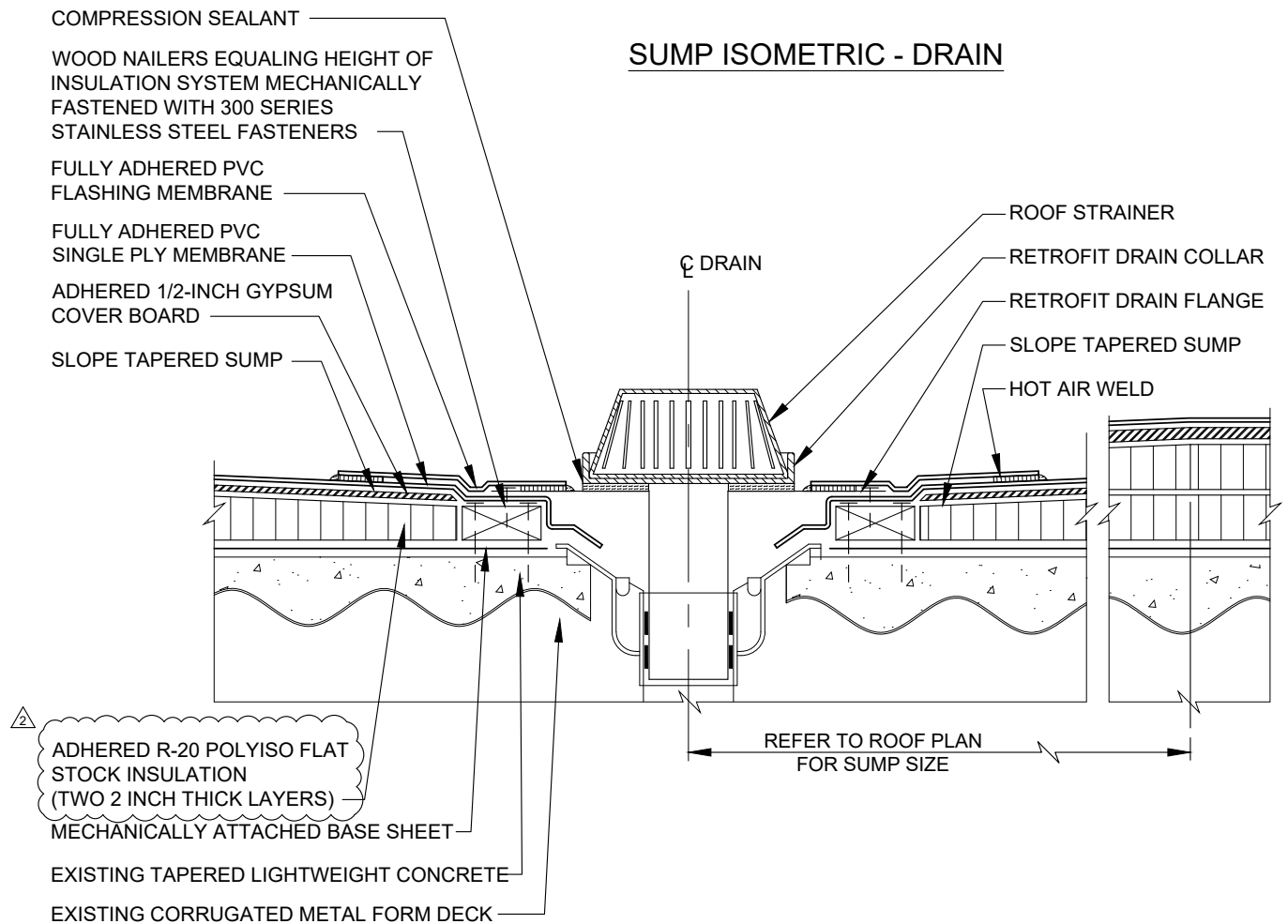


**F** AREA DIVIDER DETAIL  
A-506  
SCALE: NOT TO SCALE

R-50-DETAILS.DWG JBUNTING 4/18/2024 3:42 PM



### SUMP ISOMETRIC - DRAIN



G

ROOF DRAIN DETAIL

A-507

SCALE: NOT TO SCALE



Cleveland | Indianapolis | Knoxville | Raleigh

**SOUTH PUTNAM COMMUNITY SCHOOL CORPORATION**  
**SOUTH PUTNAM HIGH SCHOOL AND CENTRAL ELEMENTARY SCHOOL**  
**ROOF REPLACEMENT PROJECT**  
**ROOF DETAILS**

Drawn By: JB Date: 04/18/24  
Checked By: JSG Scale: AS\_SHOWN

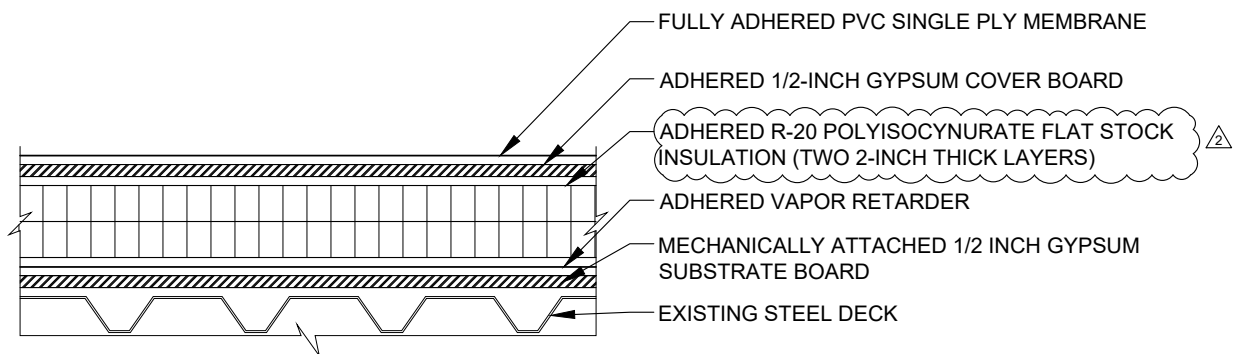
**A-507**



R-50-DETAILS.DWG JBUNTING 4/18/2024 3:43 PM

### NOTES:

- BREAK ALL INSULATION JOINTS AT MINIMUM 12-INCHES
- INSTALL TAPERED INSULATION PANELS OVERTOP FLAT-STOCK INSULATION PANELS
- INSTALL TAPERED EDGE STRIP AT TOE OF ALL SADDLES AND CRICKETS



### NEW ROOF SYSTEM DETAIL

SCALE: NOT TO SCALE

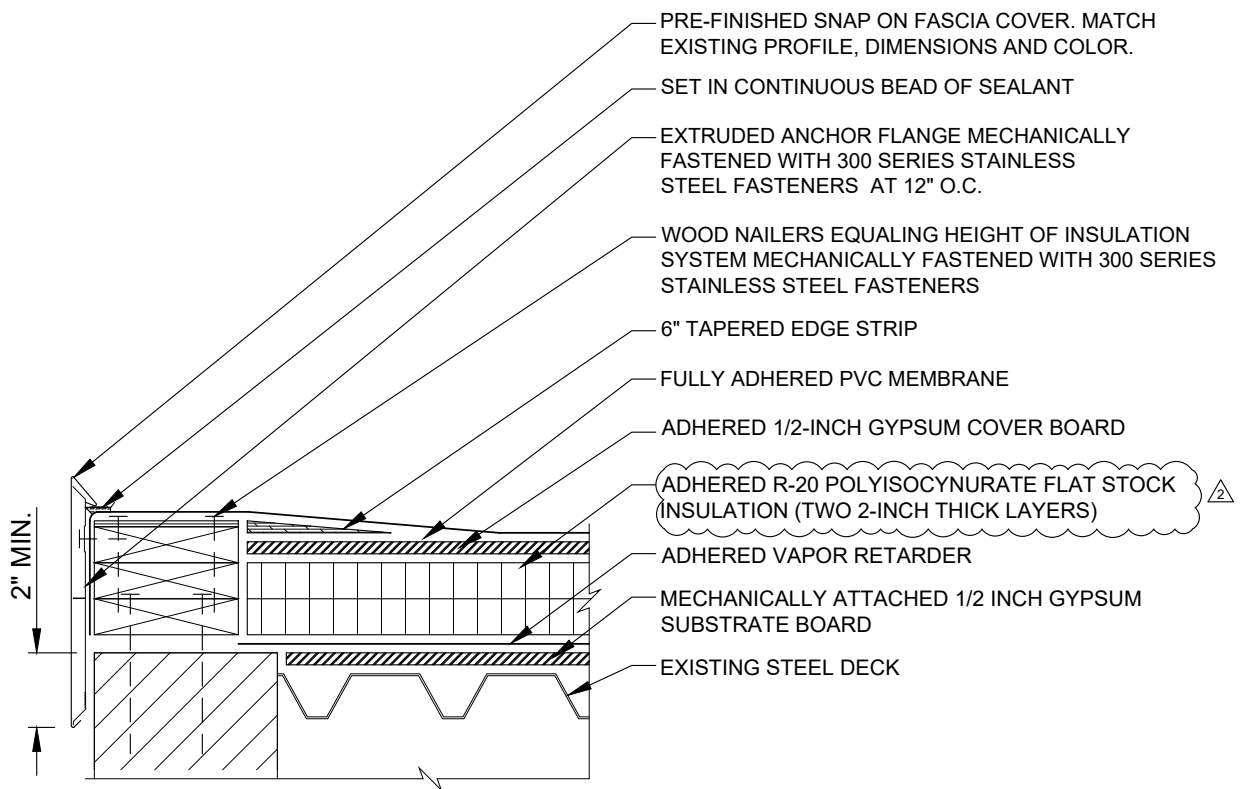


**SOUTH PUTNAM COMMUNITY SCHOOL CORPORATION**  
**SOUTH PUTNAM HIGH SCHOOL AND CENTRAL ELEMENTARY SCHOOL**  
**ROOF REPLACEMENT PROJECT**  
**ROOF DETAILS**

**Drawn By:** JB  
**Checked By:** JSG  
**Date:** 04/18/24  
**Scale:** N.T.S.

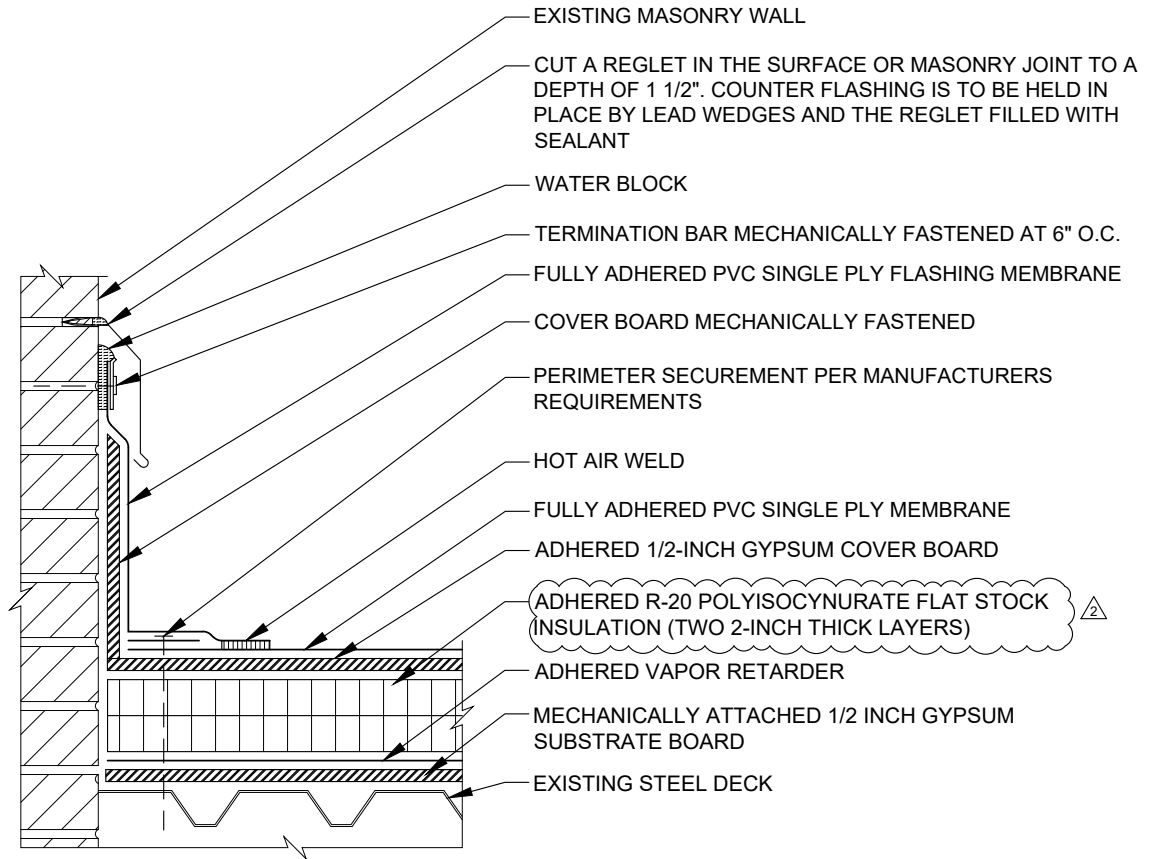
**A-508**

R-50-DETAILS.DWG JBUNTING 4/18/2024 3:43 PM



**J** GRAVEL STOP DETAIL  
A-509 SCALE: NOT TO SCALE

R-50-DETAILS.DWG JBUNTING 4/18/2024 3:42 PM



K

WALL FLASHING DETAIL

A-510

SCALE: NOT TO SCALE



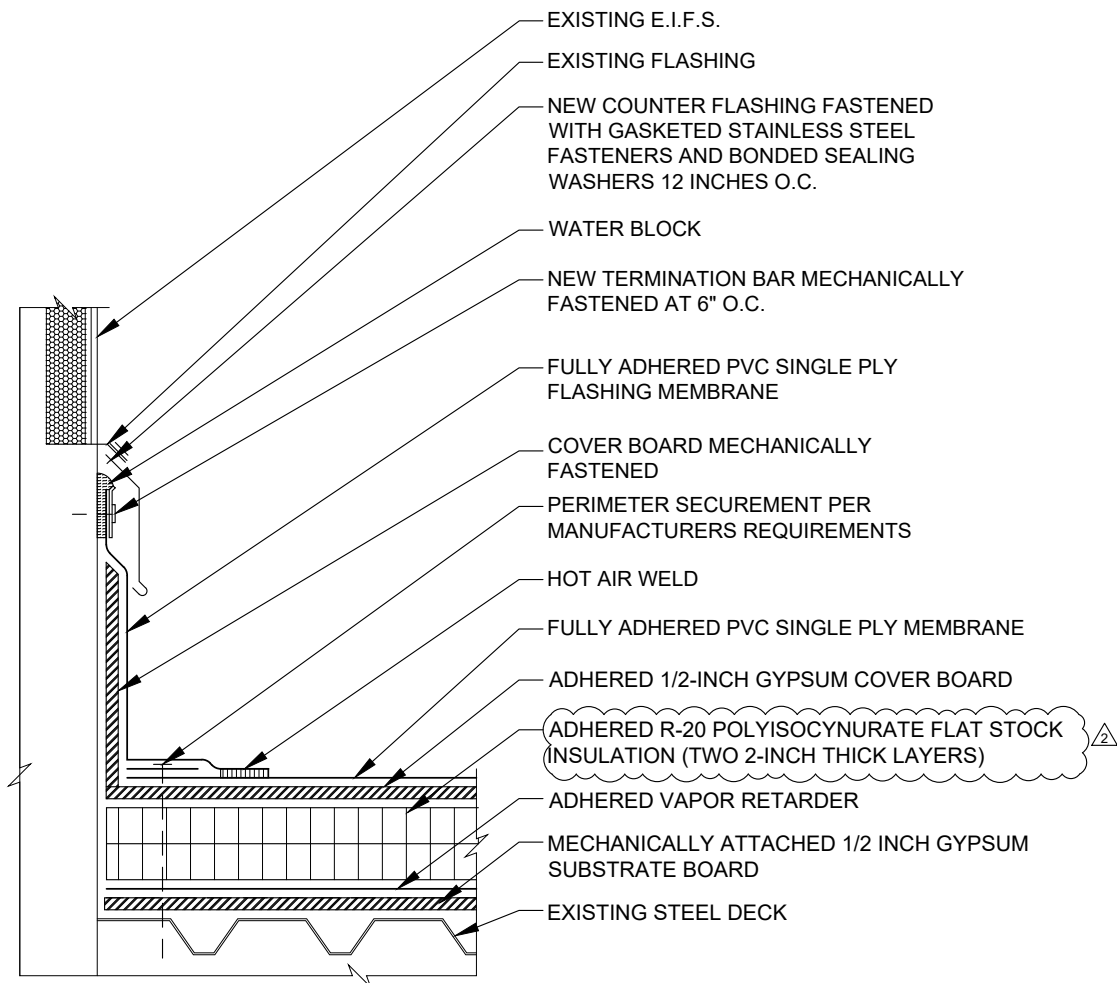
Cleveland | Indianapolis | Knoxville | Raleigh

**SOUTH PUTNAM COMMUNITY SCHOOL CORPORATION**  
**SOUTH PUTNAM HIGH SCHOOL AND CENTRAL ELEMENTARY SCHOOL**  
**ROOF REPLACEMENT PROJECT**  
**ROOF DETAILS**

**Drawn By:** JB  
**Checked By:** JSG  
**Date:** 04/18/24  
**Scale:** N.T.S.

**A-510**

R-50-DETAILS.DWG JBUNTING 4/18/2024 3:42 PM

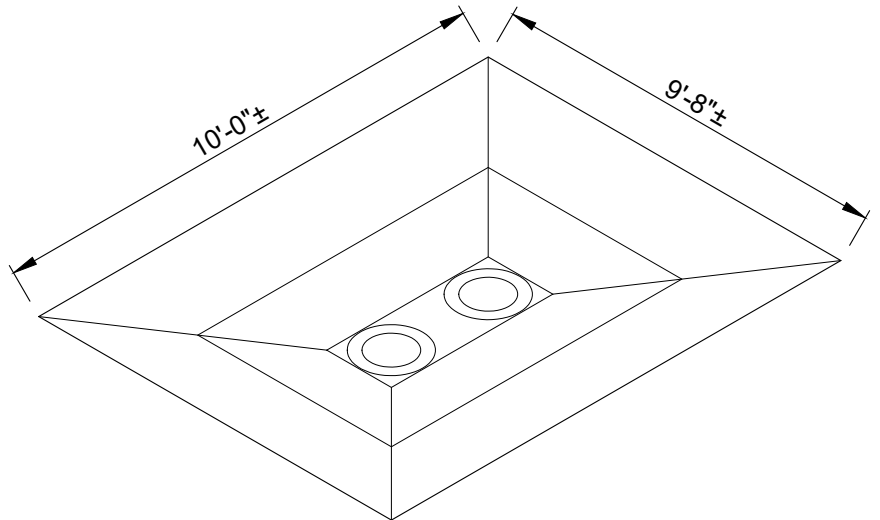


L  
A-511

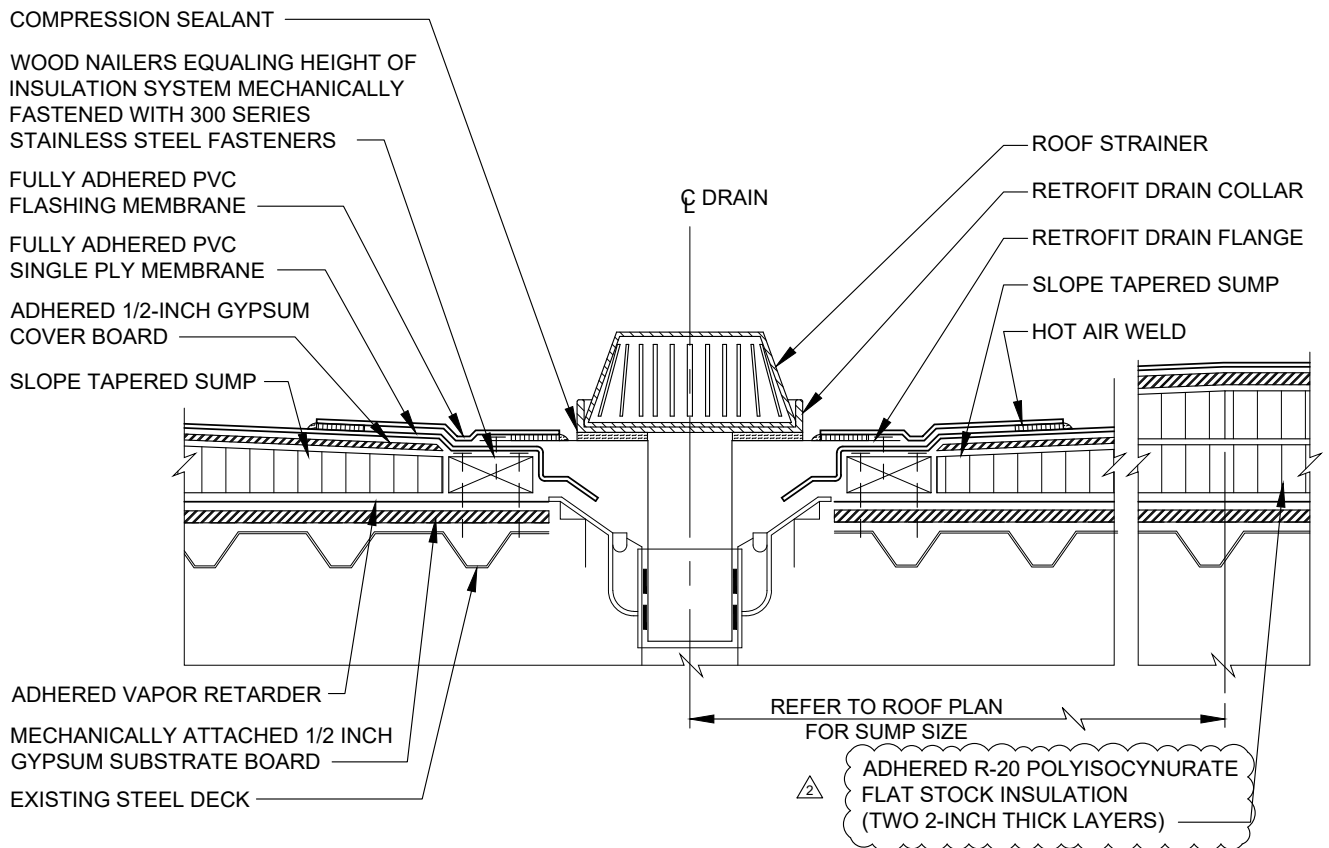
## WALL FLASHING DETAIL

SCALE: NOT TO SCALE





### SUMP ISOMETRIC - DRAIN



M

### ROOF DRAIN DETAIL

A-512

SCALE: NOT TO SCALE

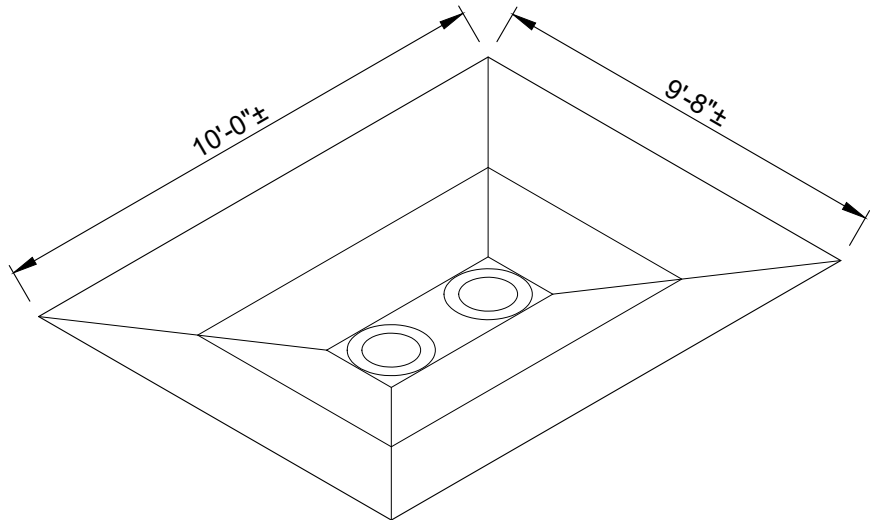


Cleveland | Indianapolis | Knoxville | Raleigh

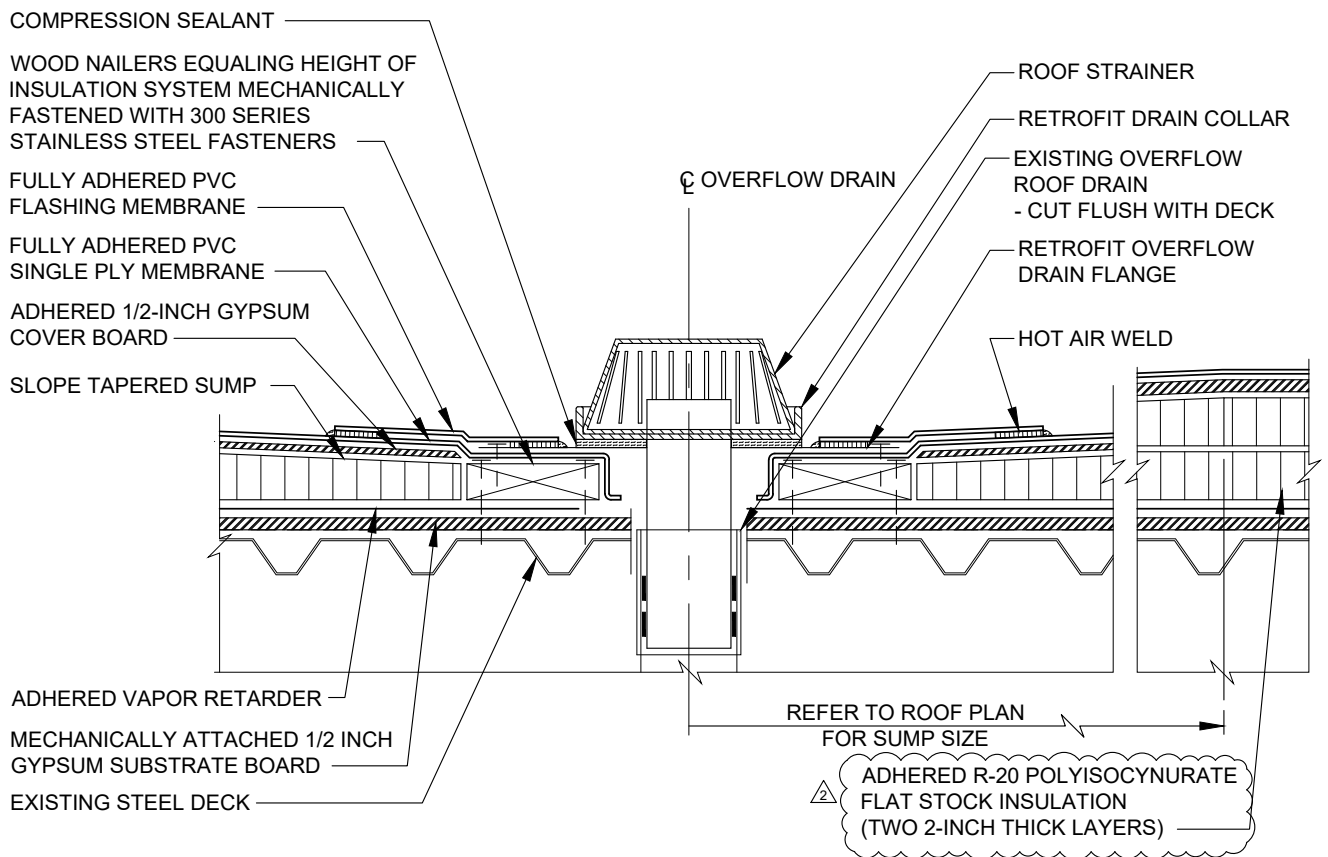
SOUTH PUTNAM COMMUNITY SCHOOL CORPORATION  
SOUTH PUTNAM HIGH SCHOOL AND CENTRAL ELEMENTARY SCHOOL  
ROOF REPLACEMENT PROJECT  
ROOF DETAILS

Drawn By: JB Date: 04/18/24  
Checked By: JSG Scale: AS SHOWN

**A-512**



### SUMP ISOMETRIC - DRAIN



### OVERFLOW ROOF DRAIN DETAIL

SCALE: NOT TO SCALE



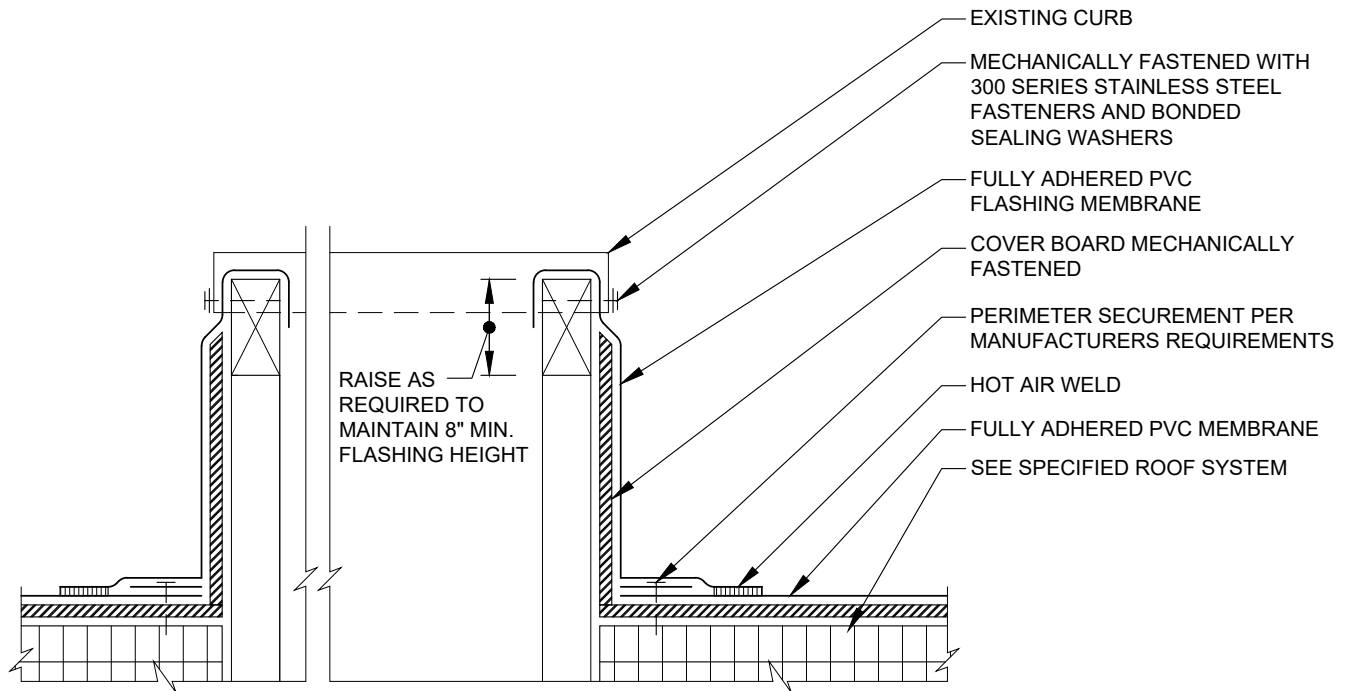
Cleveland | Indianapolis | Knoxville | Raleigh

**SOUTH PUTNAM COMMUNITY SCHOOL CORPORATION**  
**SOUTH PUTNAM HIGH SCHOOL AND CENTRAL ELEMENTARY SCHOOL**  
**ROOF REPLACEMENT PROJECT**  
**ROOF DETAILS**

Drawn By: JB Date: 04/18/24  
 Checked By: JSG Scale: AS SHOWN

**A-513**

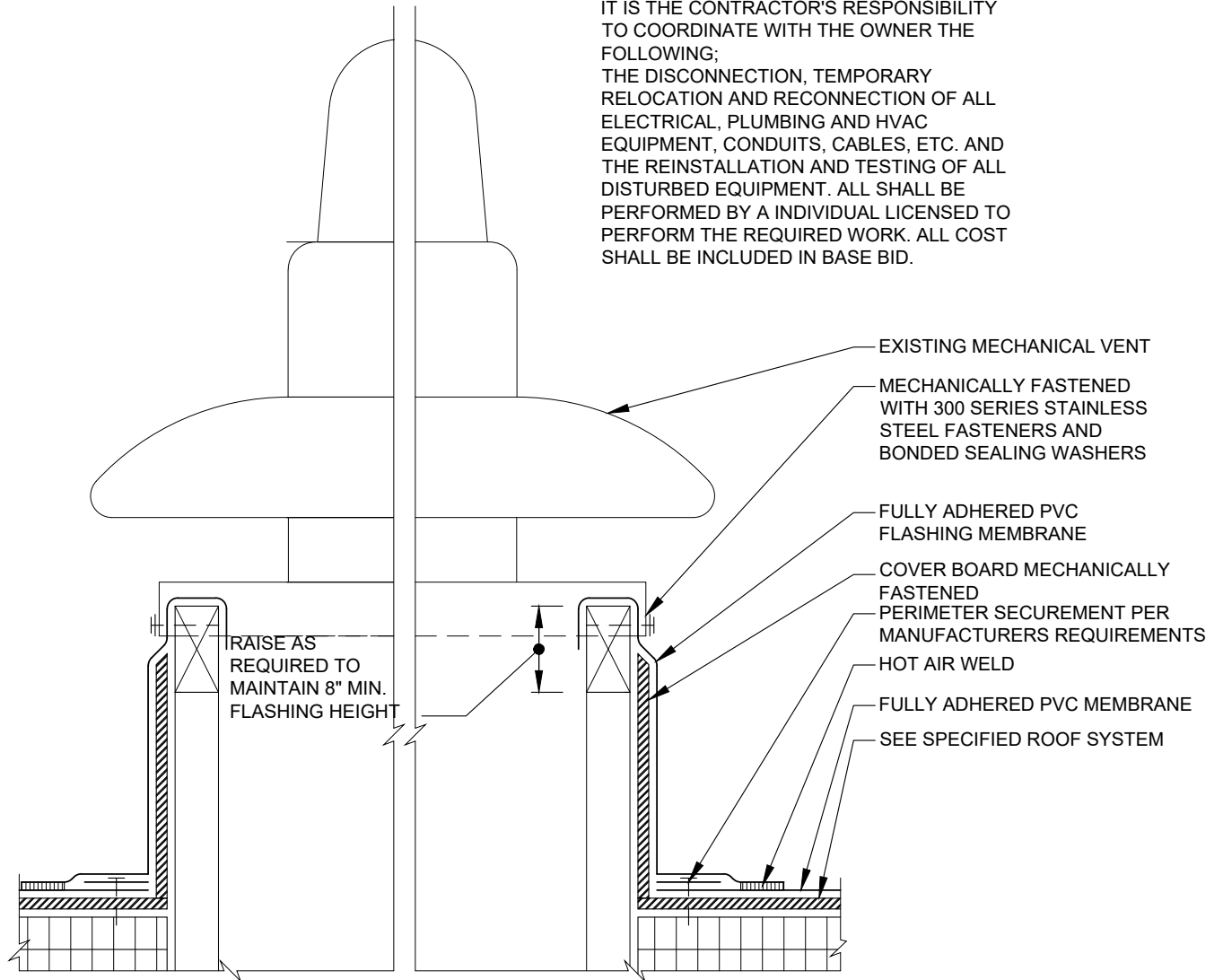
R-50-DETAILS.DWG JBUNTING 4/18/2024 3:42 PM



**O** CURB DETAIL  
A-514  
SCALE: NOT TO SCALE

**NOTE:**

IT IS THE CONTRACTOR'S RESPONSIBILITY TO COORDINATE WITH THE OWNER THE FOLLOWING;  
THE DISCONNECTION, TEMPORARY RELOCATION AND RECONNECTION OF ALL ELECTRICAL, PLUMBING AND HVAC EQUIPMENT, CONDUITS, CABLES, ETC. AND THE REINSTALLATION AND TESTING OF ALL DISTURBED EQUIPMENT. ALL SHALL BE PERFORMED BY A INDIVIDUAL LICENSED TO PERFORM THE REQUIRED WORK. ALL COST SHALL BE INCLUDED IN BASE BID.



P

A-515

**MECHANICAL VENT DETAIL**

SCALE: NOT TO SCALE



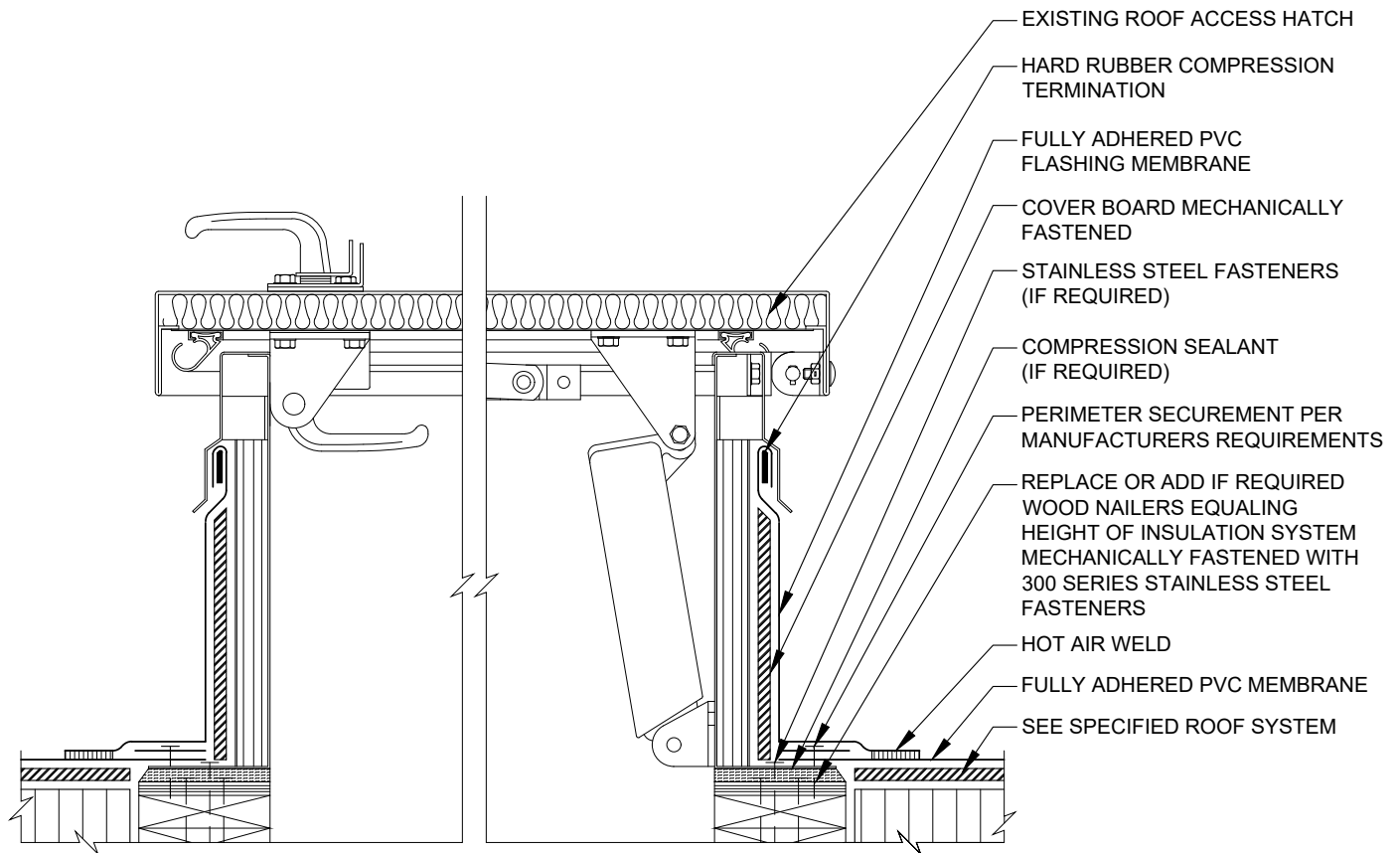
Cleveland | Indianapolis | Knoxville | Raleigh

**SOUTH PUTNAM COMMUNITY SCHOOL CORPORATION**  
**SOUTH PUTNAM HIGH SCHOOL AND CENTRAL ELEMENTARY SCHOOL**  
**ROOF REPLACEMENT PROJECT**  
**ROOF DETAILS**

Drawn By: JB Date: 04/18/24  
Checked By: JSG Scale: AS\_SHOWN

**A-515**

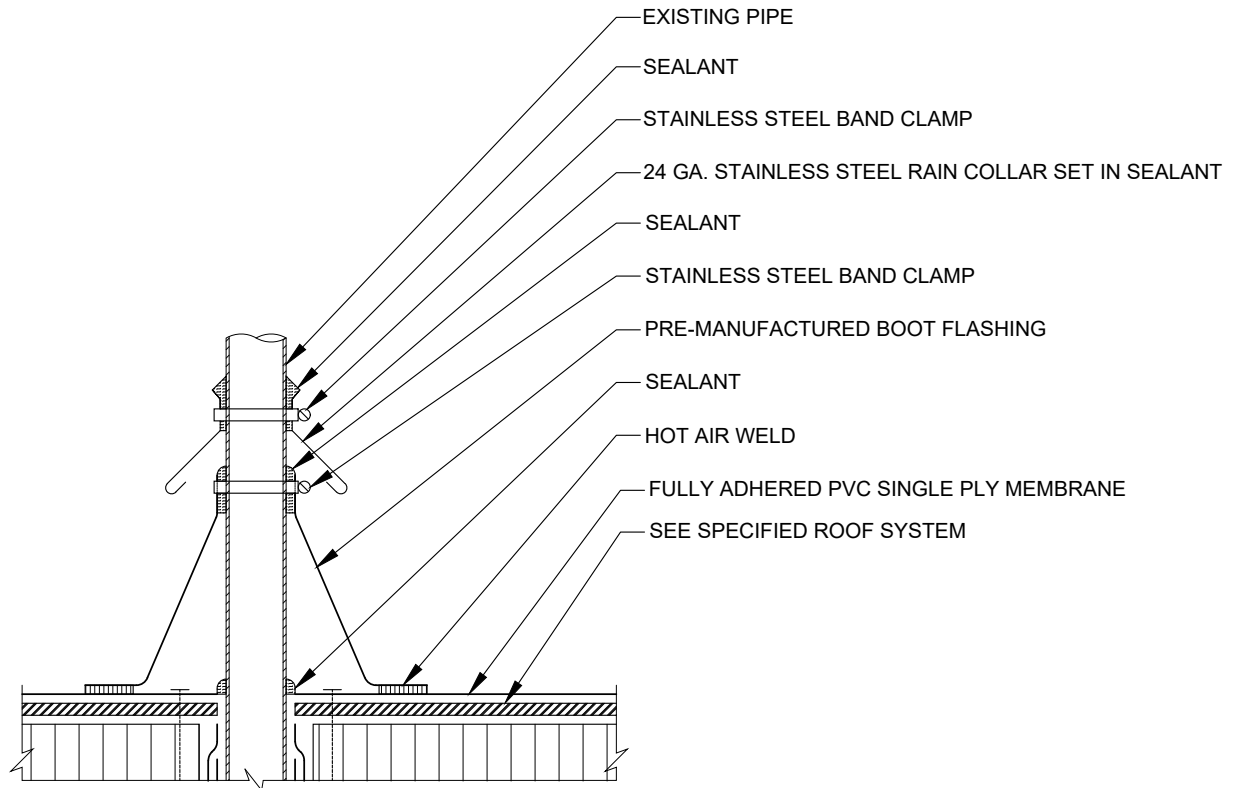
R-50-DETAILS.DWG JBUNTING 4/18/2024 3:42 PM



**Q** HATCH DETAIL  
A-516  
SCALE: NOT TO SCALE

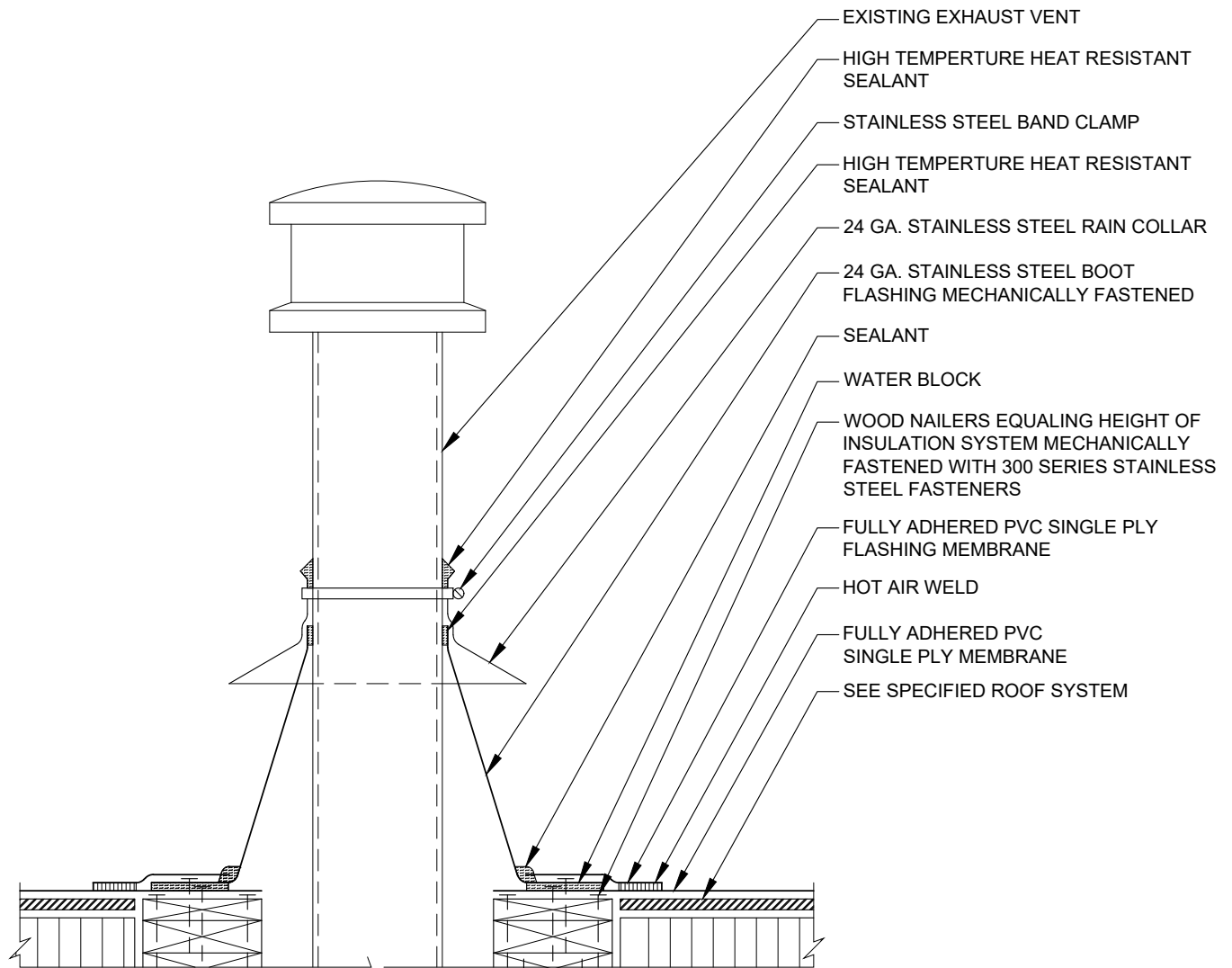


R-50-DETAILS.DWG JBUNTING 4/18/2024 3:42 PM



**R** PIPE PENETRATION DETAIL  
A-517 SCALE: NOT TO SCALE

R-50-DETAILS.DWG JBUNTING 4/18/2024 3:42 PM



**S** HEAT VENT DETAIL  
A-518  
SCALE: NOT TO SCALE