

# Hancock County Office Renovations

123 E Main Street  
Greenfield, Indiana

## Addendum No. 02

### CONSTRUCTION MANAGER



#### **Envoy, Inc.**

116<sup>th</sup> Street, Suite 250  
Indianapolis, Indiana 46038  
Phone: 317.594.4600  
Fax: 317.594.4601  
[www.envoy-cm.com](http://www.envoy-cm.com)

### ARCHITECT / ENGINEER



DLZ Indiana, LLC  
138 N. Delaware Street  
Indianapolis, Indiana 46204  
Phone: 317.633.4120

January 22, 2024

**Project:** Hancock County Office Renovations

**Date:** January 22, 2024

**By:** Envoy, Inc.

## **ADDENDUM**

---

**Number: 02**

This addendum is based in accordance with the provisions of "The General Conditions of the Contract for Construction," Article 1, "Contract Documents" and becomes a part of the Contract Documents as provided therein. Bids will be received at the Hancock County Annex in the Commissioner's Court located at 111 South American Legion Place, Suite 101, Greenfield, IN 46140 until **2:00 p.m.** (local time) on **Thursday January 25, 2024**.

---

**Included with this Addendum are the following Notes and Clarifications:**

- 1. Technical Plan and Specification changes are per the DLZ Addendum dated January 22, 2024.**
- 2. Reminder that all bids need to be submitted in sealed envelopes to the place noted in the Bid Documents. Please follow the checklist for all items required which include the State Form 96, Supplemental Bid Form per Section 004200, Financial Statement, and Bid Bond. 2 copies.**
- 3. Do NOT send you bid directly to Envoy. Subs and suppliers can contact Envoy for list of potential/probable bidders.**
- 4. Questions if simple can still be answered, however no further Addenda are planned.**

**(PAGE LEFT INTENTIONALLY BLANK)**

**ADDENDUM NO. 02**

PROJECT: HANCOCK COUNTY OFFICE RENOVATIONS  
123 East Main Street  
Greenfield, IN 46140  
DLZ Project Number 2163-1063-90

TO: All Bidders and others to whom Plans and Specifications  
for the above referenced Project have been issued.

OWNER: Hancock County Board of Commissioners  
111 South American Legion Place, Suite 219  
Greenfield, IN 46140

ARCHITECT: DLZ INDIANA, LLC  
138 N. Delaware Street.  
Indianapolis, Indiana 46204

CONSTRUCTION MANAGER: ENVOY CONSTRUCTION  
890 E 116th Street, Suite 250  
Fishers, Indiana 46038

DATE: January 22, 2024

CERTIFIED BY:



Phillip J. Wink, RA  
Registered Architect  
State of Indiana

The items included in this Addendum are to become a part of the original Drawings and Project Manual dated December 21, 2023 as if included herein. Only these items are to be altered. The remainder of the original Drawings and Project Manual remain valid in their entirety. Bidders must acknowledge receipt of this Addendum in the space provided on the Bid Form. Failure to do so may subject the Bidder to disqualification.

**PROJECT MANUAL**

- ITEM NO. 1. SECTION 093000 – TILING  
a. Replace section in its entirety with attached.
- ITEM NO. 2. SECTION 260519 – LOW-VOLTAGE ELECTRICAL POWER CONDUCTORS AND CABLES  
a. Revise paragraph 3.1A.1 as follows: “Copper for feeders smaller than No. 4 AWG; copper or aluminum for feeders No. 4 AWG and larger. Conductors must be solid for No. 10 AWG and smaller; stranded for No. 8 AWG and larger.”
- ITEM NO. 3. SECTION 271300 – COMMUNICATIONS BACKBONE CABLING  
a. Revise paragraph 2.2C.1, replace “OS2” with “OM2.”

**DRAWINGS**

- ITEM NO. 4.      DRAWING A8.2 - ENLARGED TOILET PLANS AND INTERIOR ELEVATIONS  
a.                Replace drawing in its entirety with attached.
- ITEM NO. 5.      DRAWING A8.3 - ENLARGED TOILET PLANS AND INTERIOR ELEVATIONS  
a.                Replace drawing in its entirety with attached.
- ITEM NO. 6.      DRAWING M1.2 – ROOF DUCTWORK INSTALLATION PLAN  
a.                Detail 1 – In the southwest mechanical room, delete one (1) note “233121” at the west exterior wall. Add “Backdraft damper sizes: 36 inches x 36 inches; 20 inches x 20 inches” to note “233121” at the east exterior wall.
- ITEM NO. 7.      DRAWING M4.2 – MECHANICAL ROOMS ENLARGED PLANS  
a.                Detail 1: Delete note “233121” just south of AHU-5. Add “Backdraft damper sizes: 60 inches x 60 inches; 12 inches x 14 inches; 12 inches x 12 inches” to note “233121” in the southeast corner of the mechanical room.  
b.                Detail 2: Add “Backdraft damper sizes: 60 inches x 48 inches; 12 inches x 12 inches; 14 inches x 14 inches” to note “233121”.

**ATTACHMENTS:**

**PROJECT MANUAL – VOLUME 2**

1.                093000 – TILING

**PROJECT MANUAL – VOLUME 3**

None

**DRAWINGS**

1.                A8.2 - ENLARGED TOILET PLANS AND INTERIOR ELEVATIONS  
2.                A8.3 - ENLARGED TOILET PLANS AND INTERIOR ELEVATIONS

END OF ADDENDUM NO. 02

## SECTION 093000 - TILING

## PART 1 - GENERAL

## 1.1 RELATED DOCUMENTS

- A. Drawings and general provisions of the Contract, including General and Supplementary Conditions and Division 01 Specification Sections, apply to this Section.

## 1.2 SUMMARY

- A. This Section includes the following:
  - 1. Porcelain tile for floors and base.
- B. Related Sections include the following:
  - 1. Division 07 Section "Joint Sealants" for sealing of expansion, contraction, control, and isolation joints in tile surfaces.

## 1.3 DEFINITIONS

- A. Module Size: Actual tile size (minor facial dimension as measured per ASTM C 499) plus joint width indicated.
- B. Facial Dimension: Nominal tile size as defined in ANSI A137.1.

## 1.4 SUBMITTALS

- A. Product Data: For each type of product indicated.
- B. Shop Drawings: Show locations of each type of tile and tile pattern. Show widths, details, and locations of expansion, contraction, control, and isolation joints in tile substrates and finished tile surfaces.
- C. Samples for Initial Selection: For each type of tile and grout indicated. Include Samples of accessories involving color selection.
- D. Samples for Verification:
  - 1. Full-size units of each type and composition of tile and for each color and finish required.
  - 2. Assembled samples with grouted joints for each type and composition of tile and for each color and finish required, at least 12 inches (300 mm) square and mounted on rigid panel. Use grout of type and in color or colors approved for completed work.

3. Full-size units of each type of trim and accessory.

- E. Qualification Data: For Installer.

## 1.5 QUALITY ASSURANCE

- A. Source Limitations for Tile: Obtain all tile from one source or producer.

1. Obtain tile from same production run and of consistent quality in appearance and physical properties for each contiguous area.

- B. Source Limitations for Setting and Grouting Materials: Obtain ingredients of a uniform quality for each mortar, adhesive, and grout component from a single manufacturer and each aggregate from one source or producer.

- C. Mockups: Build mockups to verify selections made under sample Submittals and to demonstrate aesthetic effects.

1. Build mockup of floor and wall tile installation.
2. Approved mockups may become part of the completed Work if undisturbed at time of Substantial Completion.

## 1.6 PROJECT CONDITIONS

- A. Environmental Limitations: Do not install tile until construction in spaces is complete and ambient temperature and humidity conditions are maintained at the levels indicated in referenced standards and manufacturer's written instructions.

## PART 2 - PRODUCTS

### 2.1 MANUFACTURERS

- A. In other Part 2 articles where titles below introduce lists, the following requirements apply for product selection:
  1. Manufacturers: Subject to compliance with requirements, available products that may be incorporated into the Work include the manufacturers specified.

### 2.2 PRODUCTS, GENERAL

- A. ANSI Ceramic Tile Standard: Provide tile that complies with ANSI A137.1, "Specifications for Ceramic Tile," for types, compositions, and other characteristics indicated.
  1. Provide tile complying with Standard grade requirements, unless otherwise indicated.

- B. ANSI Standards for Tile Installation Materials: Provide materials complying with ANSI standards referenced in "Setting and Grouting Materials" Article.
- C. Colors, Textures, and Patterns: From manufacture's standard selection.
- D. Factory Blending: For tile exhibiting color variations within ranges selected during Sample submittals, blend tile in factory and package so tile units taken from one package show same range in colors as those taken from other packages and match approved Samples.
- E. Mounting: For factory-mounted tile, provide back- or edge-mounted tile assemblies as standard with manufacturer, unless otherwise indicated.

## 2.3 TILE PRODUCTS

- A. Porcelain Tile: Basis of Design Product: Subject to compliance with requirements provide – **"Modern Formation"** as manufactured by **Marazzi** or an Architect approved product by one of the following manufacturers:

- 1. Or pre-approved equal by:

- a. American Olean; Div. of Dal-Tile International Corp.
- b. Crossville Ceramics Company, L.P.
- c. Daltile.
- d. Florida Tile Industries, Inc.
- e. Royal Mosa Tiles

- 2. Porcelain Floor Tile:

- a. Style: **Modern Formation.**
- b. Type: **Colorbody Porcelain.**
- c. Application: Floor **and Wall**
- d. Size: **24**-inches by 12-inches.
- e. Thickness: 1/3-inch.
- f. Color: **MF05 Smoky Ridge.**
- g. Finish: **Unpolished.**

- 3. Technical Data:

- a. Water Absorption: ASTM C373 < 0.1%.
- b. Breaking Strength: ASTM C648 > 400 lbs.
- c. Scratch Hardness: MOHS > 7.0.
- d. Chemical Resistance: ASTM C650 Unaffected.
- e. Bond Strength: > 200 psi.

- 4. Porcelain Tile **bullnose trim**:

- a. Size: Bullnose 3-inches by **24**-inches.
- b. Edge: Rectified.



- c. Finish: **Unpolished.**
- d. Color: **MF05 Smoky Ridge.**

**5. Porcelain Tile cove base and outcorners:**

- a. Size: **Cove base 6-inches by 12-inches.**
- b. Size: **Outcorner 1-inch by 6-inches**
- c. Edge: **Rectified.**
- d. Finish: **Unpolished.**
- e. Color: **MF05 Smoky Ridge.**

**B. Trim:**

- 1. Provide necessary caps, stops, returns, trimmers and other shapes to complete installation.
- 2. Color and finish: Aluminum.

~~C. Accessories:~~

~~1. Base:~~

- ~~a. Schluter Systems **DILEX-AHK**~~

~~2. Option:~~

- ~~a. Custom Building Products~~
- ~~b. Blanke and Co.~~
- ~~c. Dural USA, Inc.~~

**2.4 GROUTING MATERIALS**

**A. Manufacturers:**

- 1. Bonsal, W. R., Company.
- 2. Bostik.
- 3. DAP, Inc.
- 4. LATICRETE International Inc.
- 5. MAPEI Corporation.
- 6. TEC Specialty Products Inc.
- 7. Custom Building Products.

**B. Latex-Portland Cement Mortar (Thin Set): ANSI A118.4, consisting of the following:**

- 1. Prepackaged dry-mortar mix containing dry, redispersible, ethylene vinyl acetate additive to which only water must be added at Project site.
- 2. Prepackaged dry-mortar mix combined with acrylic resin or styrene-butadiene-rubber liquid-latex additive.

- a. For wall applications, provide nonsagging mortar that complies with Paragraph F-4.6.1 in addition to the other requirements in ANSI A118.4.
- C. Sand-Portland Cement Grout: ANSI A108.10, composed of white or gray cement and white or colored aggregate as required to produce color indicated.

## 2.5 MISCELLANEOUS MATERIALS

- A. Trowelable Patching Compounds: Latex-modified, Portland cement-based formulation provided or approved by manufacturer of tile-setting materials for installations indicated.
- B. Tile Cleaner: A neutral cleaner capable of removing soil and residue without harming tile and grout surfaces, specifically approved for materials and installations indicated by tile and grout manufacturers.
- C. Grout Sealer: Manufacturer's standard silicone product for sealing grout joints that does not change color or appearance of grout.

### 1. Products:

- a. Bonsal, W. R., Company; Grout Sealer.
- b. Bostik; CeramaSeal Grout Sealer.
- c. MAPEI Corporation; KER 003, Silicone Spray Sealer for Cementitious Tile Grout.
- d. Southern Grouts & Mortars, Inc.; Silicone Grout Sealer.
- e. Summitville Tiles, Inc.; SL-15, Invisible Seal Penetrating Grout and Tile Sealer.
- f. TEC Specialty Products Inc.; TA-256 Penetrating Silicone Grout Sealer.
- g. Miracle.
- h. Custom Building Products.

### D. Joint Compound for Tile Backing Panels:

- 1. Cementitious Backer Units: As recommended by backer unit manufacturer.

## 2.6 MIXING MORTARS AND GROUT

- A. Mix mortars and grouts to comply with referenced standards and mortar and grout manufacturers' written instructions.
- B. Add materials, water, and additives in accurate proportions.
- C. Obtain and use type of mixing equipment, mixer speeds, mixing containers, mixing time, and other procedures to produce mortars and grouts of uniform quality with optimum performance characteristics for installations indicated.

## PART 3 - EXECUTION

## 3.1 EXAMINATION

- A. Examine substrates, areas, and conditions where tile will be installed, with Installer present, for compliance with requirements for installation tolerances and other conditions affecting performance of installed tile.
  - 1. Verify that substrates for setting tile are firm; dry; clean; free of oil, waxy films, and curing compounds; and within flatness tolerances required by referenced ANSI A108 Series of tile installation standards for installations indicated.
  - 2. Verify that installation of grounds, anchors, recessed frames, electrical and mechanical units of work, and similar items located in or behind tile has been completed before installing tile.
  - 3. Verify that joints and cracks in tile substrates are coordinated with tile joint locations; if not coordinated, adjust joint locations in consultation with Architect.
- B. Proceed with installation only after unsatisfactory conditions have been corrected.

## 3.2 PREPARATION

- A. Remove coatings, including curing compounds and other substances that contain soap, wax, oil, or silicone, that are incompatible with tile-setting materials.
- B. Blending: For tile exhibiting color variations within ranges selected during Sample submittals, verify that tile has been factory blended and packaged so tile units taken from one package show same range of colors as those taken from other packages and match approved Samples. If not factory blended, either return to manufacturer or blend tiles at Project site before installing.

## 3.3 INSTALLATION, GENERAL

- A. ANSI Tile Installation Standards: Comply with parts of ANSI A108 Series "Specifications for Installation of Ceramic Tile" that apply to types of setting and grouting materials and to methods indicated in ceramic tile installation schedules.
- B. TCA Installation Guidelines: TCA's "Handbook for Ceramic Tile Installation." Comply with TCA installation methods indicated in ceramic tile installation schedules.
- C. Extend tile work into recesses and under or behind equipment and fixtures to form complete covering without interruptions, unless otherwise indicated. Terminate work neatly at obstructions, edges, and corners without disrupting pattern or joint alignments.
- D. Accurately form intersections and returns. Perform cutting and drilling of tile without marring visible surfaces. Carefully grind cut edges of tile abutting trim, finish, or built-in items for

straight aligned joints. Fit tile closely to electrical outlets, piping, fixtures, and other penetrations so plates, collars, or covers overlap tile.

- E. Jointing Pattern: Align joints when adjoining tiles on walls and trim are same size. Lay out tile work and center tile fields in both directions on each wall area. Adjust to minimize tile cutting. Provide uniform joint widths, unless otherwise indicated.
  - 1. For tile mounted in sheets, make joints between tile sheets same width as joints within tile sheets so joints between sheets are not apparent in finished work.
  - 2. Tile Pattern: One third running bond.
- F. If tile ends in middle of wall, rather than wall to wall, provide end bull nosed tile.
- G. Grout tile to comply with requirements of the following tile installation standards:
  - 1. For ceramic tile grouts (sand-Portland cement; dry-set, commercial Portland cement; and latex-Portland cement grouts), comply with ANSI A108.10.

### 3.4 CLEANING AND PROTECTING

- A. Cleaning: On completion of placement and grouting, clean all ceramic tile surfaces so they are free of foreign matter.
  - 1. Remove grout residue from tile as soon as possible.
  - 2. Clean grout smears and haze from tile according to tile and grout manufacturer's written instructions, but no sooner than 10 days after installation. Use only cleaners recommended by tile and grout manufacturers and only after determining that cleaners are safe to use by testing on samples of tile and other surfaces to be cleaned. Protect metal surfaces and plumbing fixtures from effects of cleaning. Flush surfaces with clean water before and after cleaning.
- B. Before final inspection, remove protective coverings and rinse neutral cleaner from tile surfaces.

END OF SECTION 093000

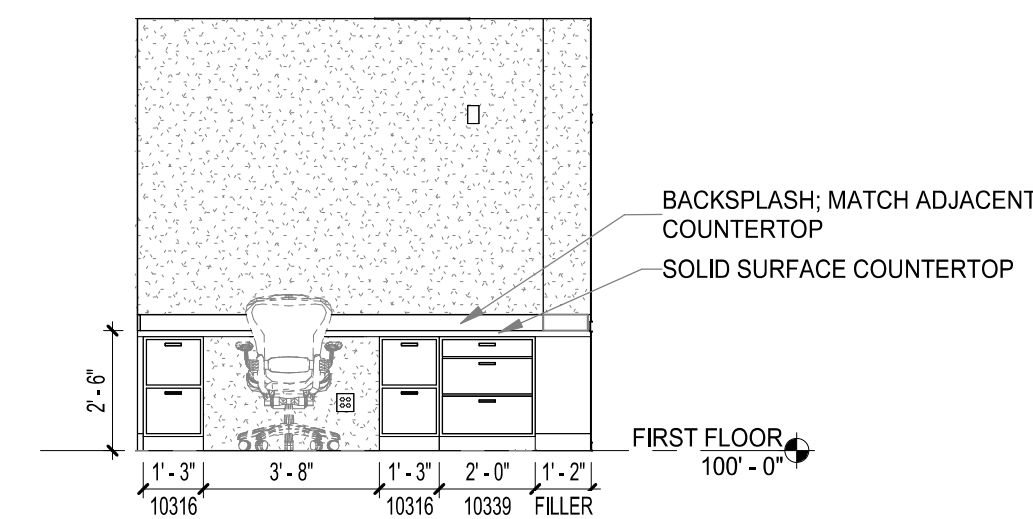
(THIS PAGE INTENTIONALLY LEFT BLANK)

**GENERAL NOTES:**

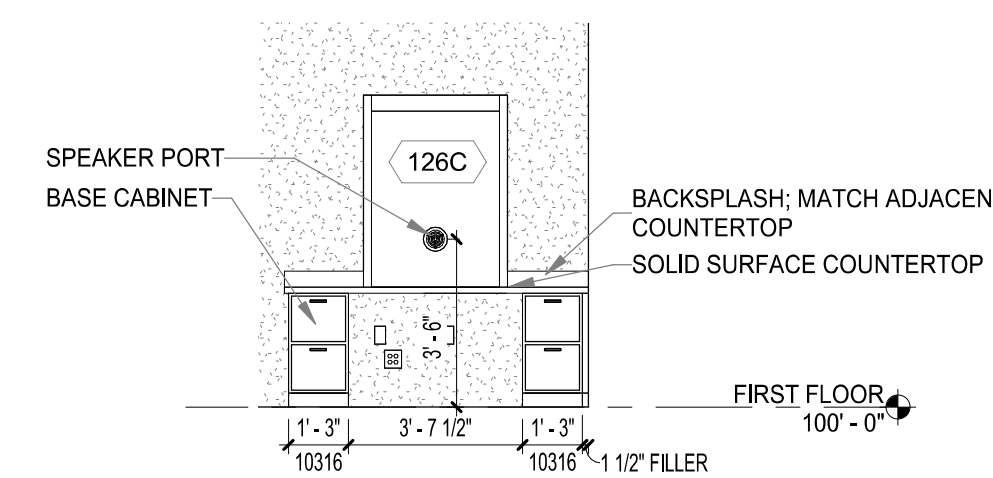
- A. REFER TO G1.1 FOR ADDITIONAL GENERAL NOTES AND INFORMATION.
- B. REFER TO SHEET G1.3 FOR STANDARD ADA MOUNTING HEIGHTS OF ALL FIXTURES, ACCESSORIES, AND SIGNAGE.

## KEYNOTES

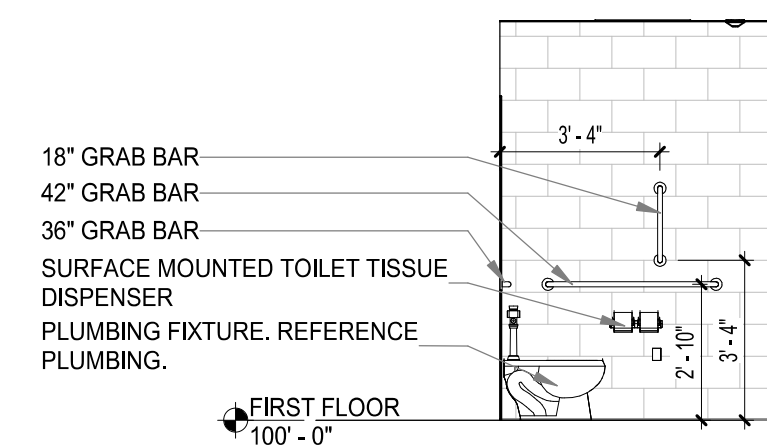
- 085640 SPEAKER PORT  
102801 SURFACE MOUNTED TOILET TISSUE DISPENSER  
102820 WALL MOUNTED SOAP DISPENSER  
102830 42" GRAB BAR  
102831 36" GRAB BAR  
102833 18" GRAB BAR  
102836 24"x36" MIRROR UNIT  
102843 ROBE HOOK  
123211 BARE CABINET  
123601 BACKSLASH; MATCH ADJACENT COUNTERTOP  
123661 SOLID SURFACE COUNTERTOP  
224101 PLUMBING FIXTURE, REFERENCE PLUMBING.



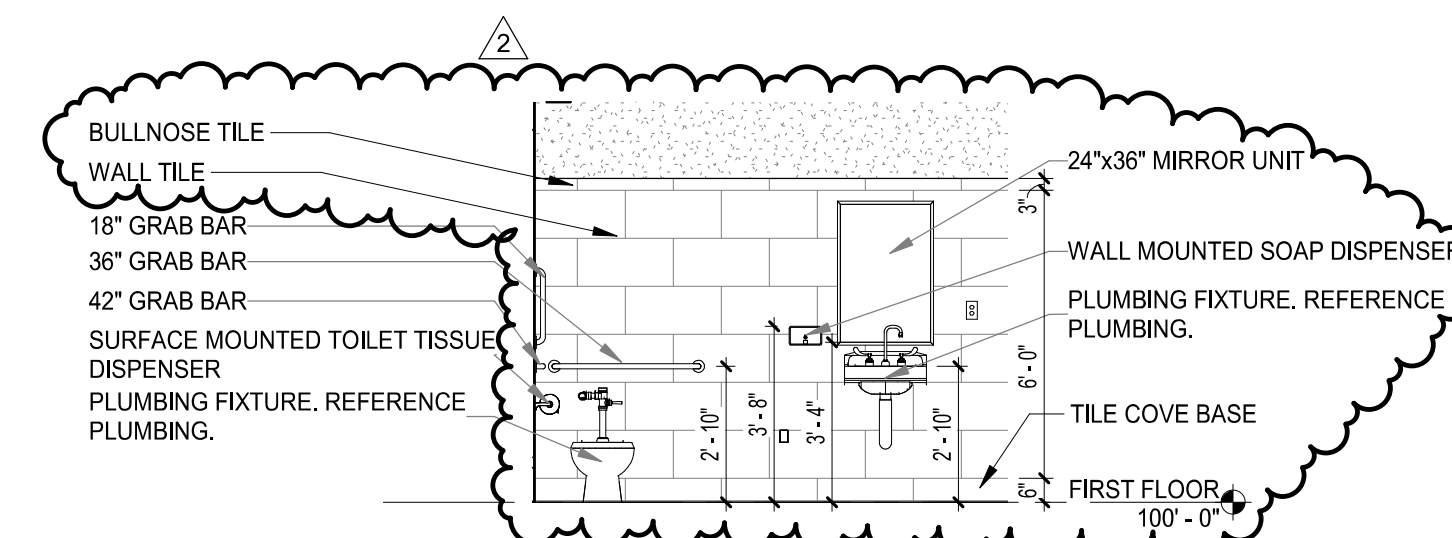
**5 SECURITY 126A - SOUTH ELEVATION**  
SCALE: 1/4" = 1'-0"



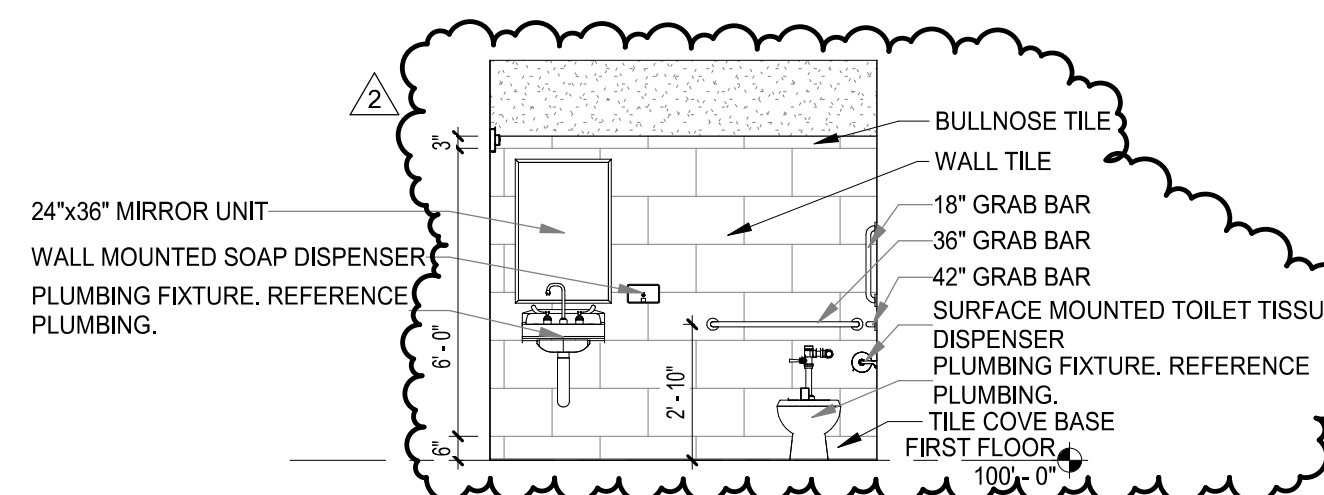
**4 SECURITY 126A - EAST ELEVATION**  
SCALE: 1/4" = 1'-0"



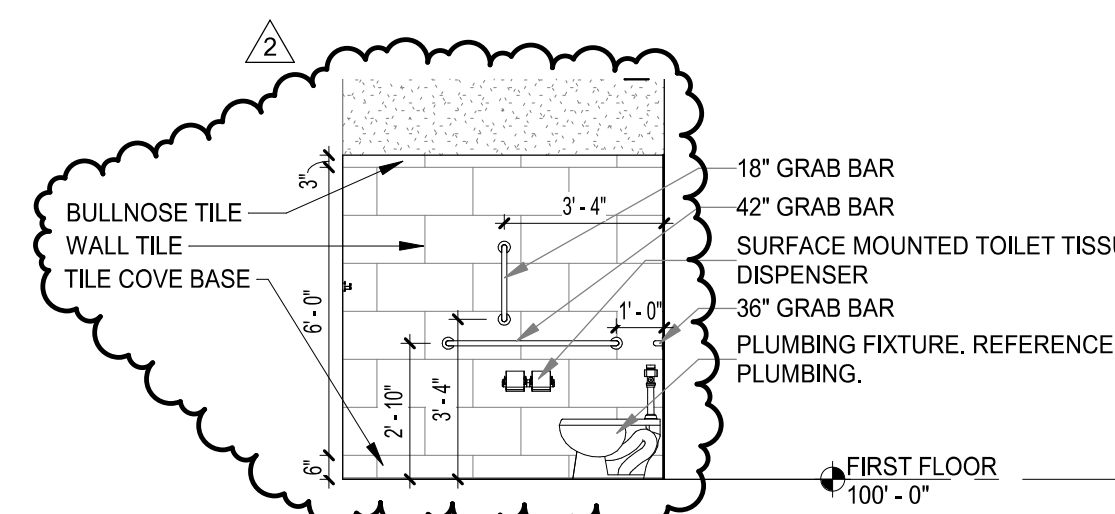
**9 STAFF TOILET 141 - WEST ELEVATION**  
SCALE: 1/4" = 1'-0"



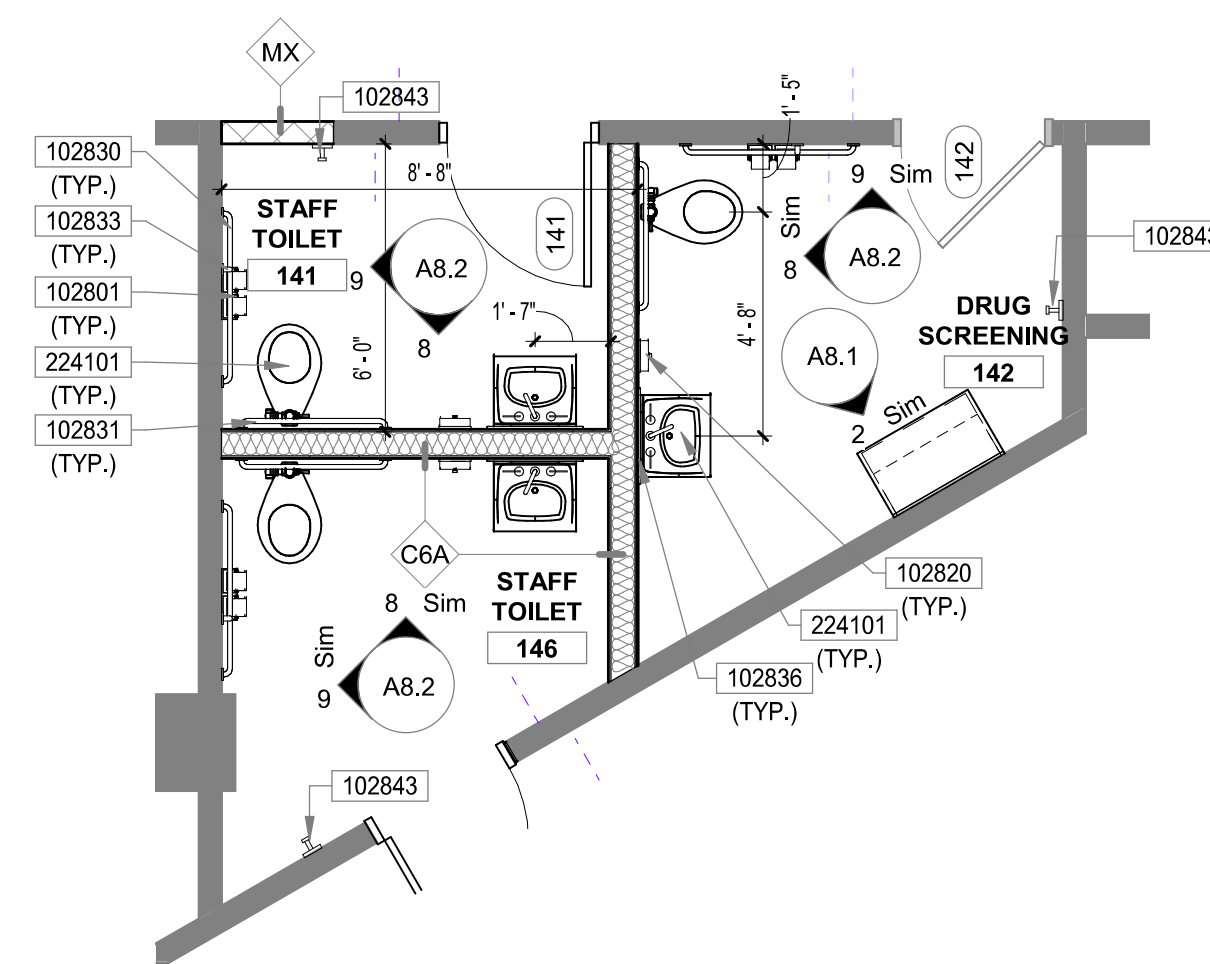
**3 TOILET 116 - SOUTH ELEVATION**  
SCALE: 1/4" = 1'-0"



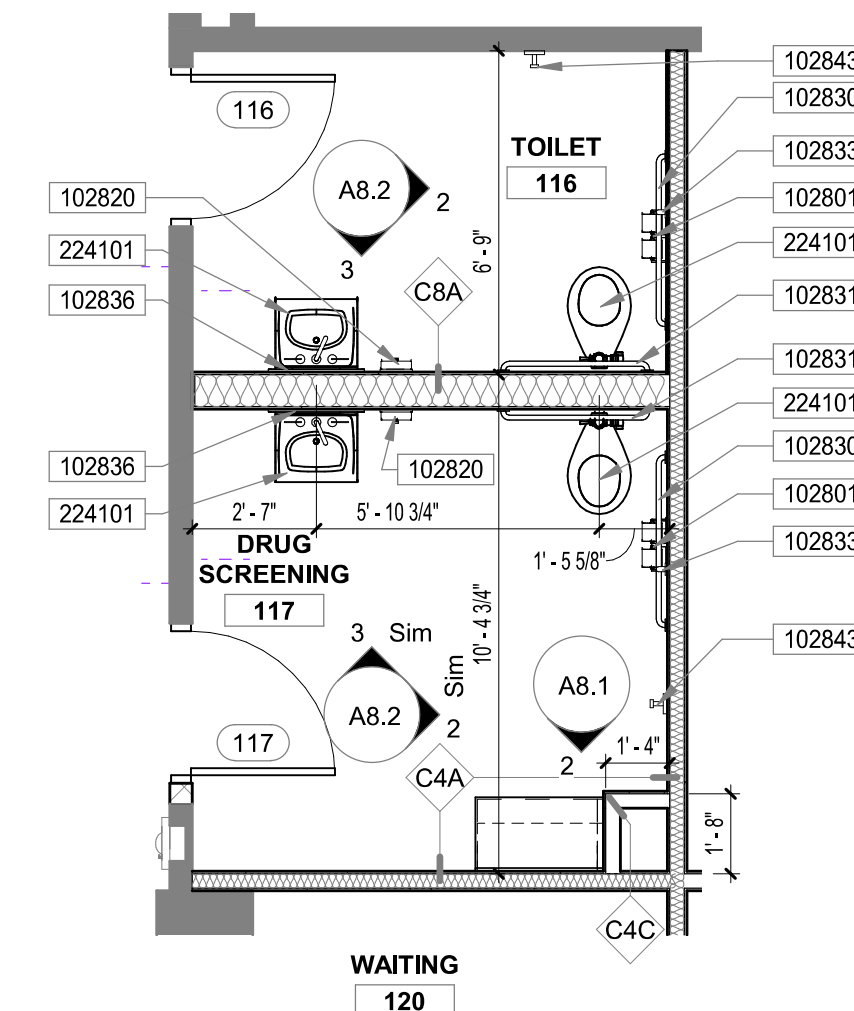
**8 STAFF TOILET 141 - SOUTH ELEVATION**  
SCALE: 1/4" = 1'-0"



2 TOILET 116 - EAST ELEVATION  
SCALE: 1/4" = 1'-0"

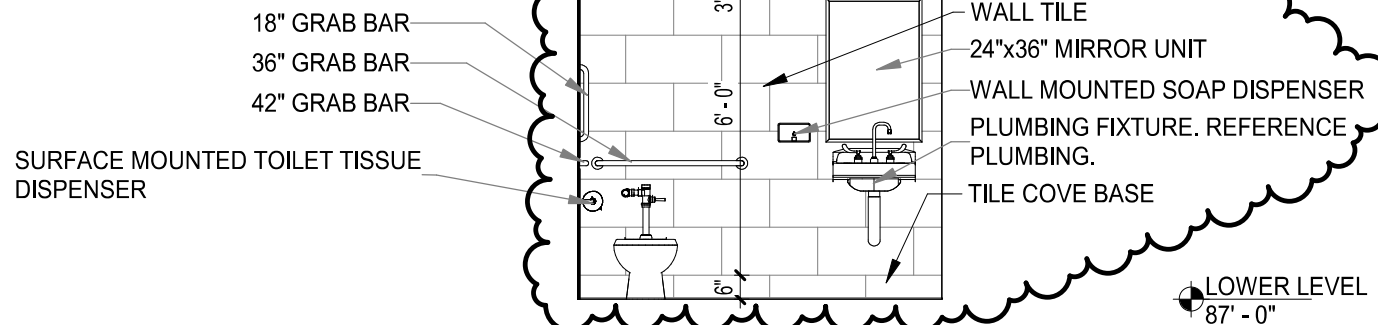


**7 FIRST FLOOR PLAN - STAFF TOILETS/DRUG SCREENING**  
SCALE: 1/4" = 1'-0"

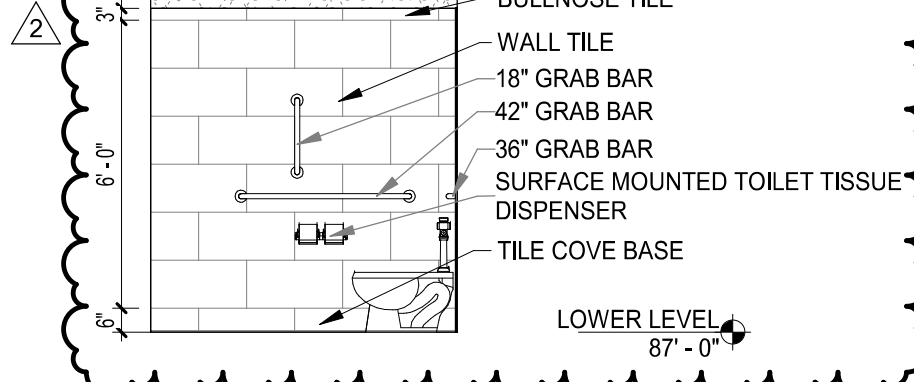


**1 FIRST FLOOR PLAN - TOILET/DRUG SCREENING**  
SCALE: 1/4" = 1'-0"

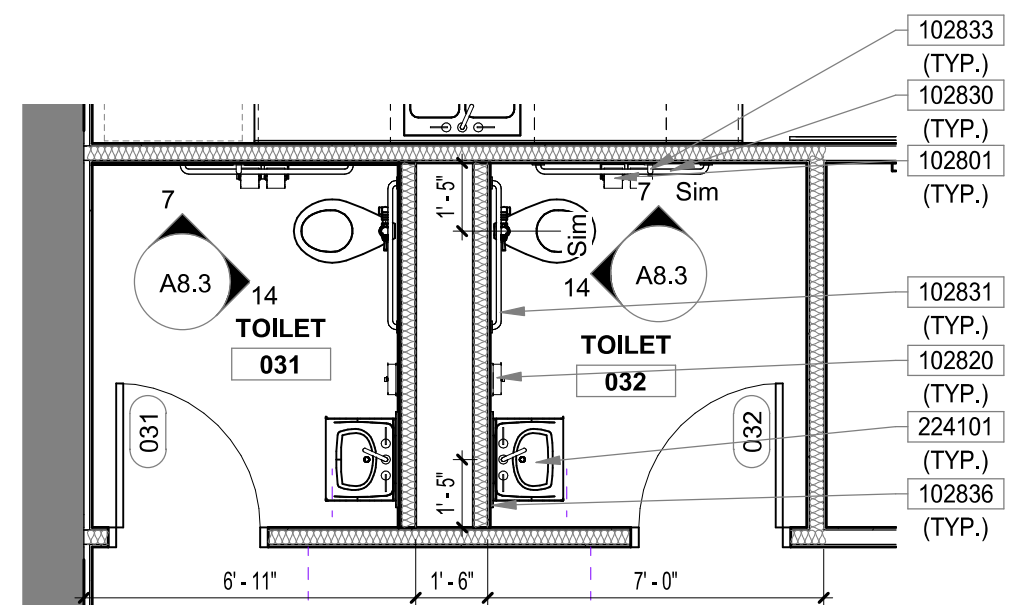




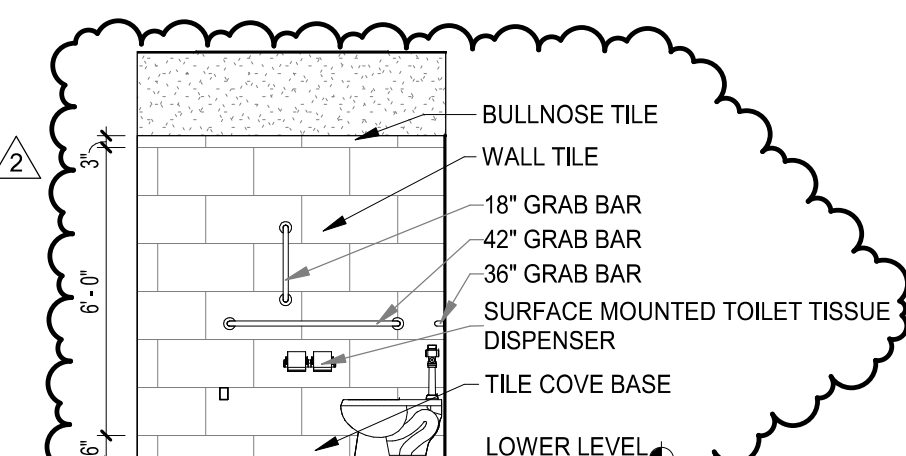
**14 TOILET 031 - EAST ELEVATION**  
SCALE: 1/4" = 1'-0"



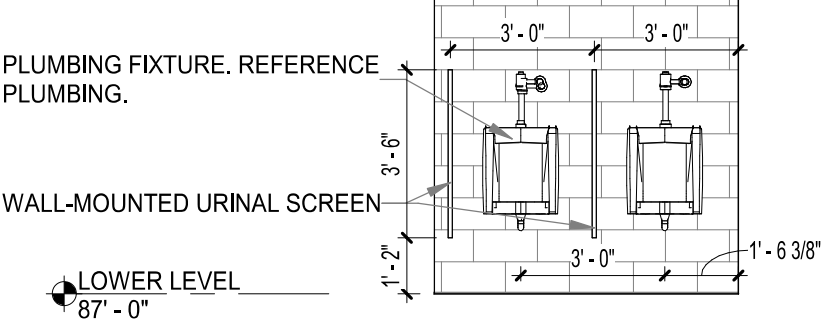
**7 TOILET 031 - NORTH ELEVATION**  
SCALE: 1/4" = 1'-0"



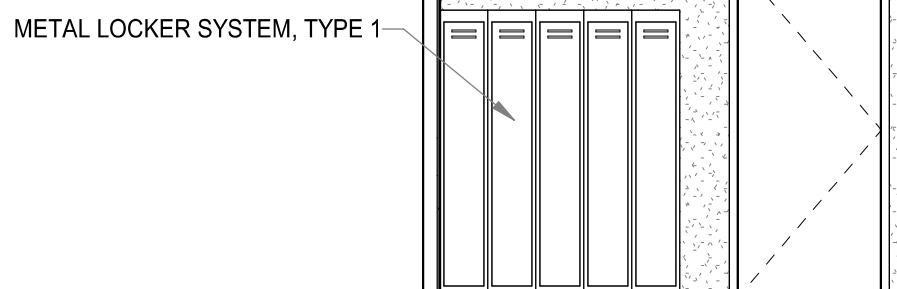
**13 LOWER LEVEL FLOOR PLAN - TOILETS 031/032**  
SCALE: 1/4" = 1'-0"



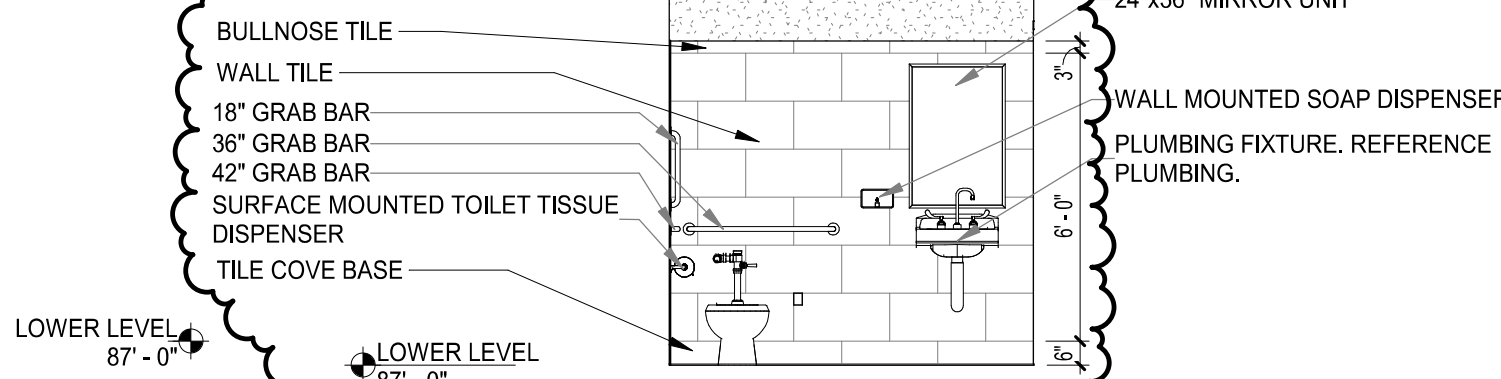
**6 TOILET 083 - SOUTH ELEVATION**  
SCALE: 1/4" = 1'-0"



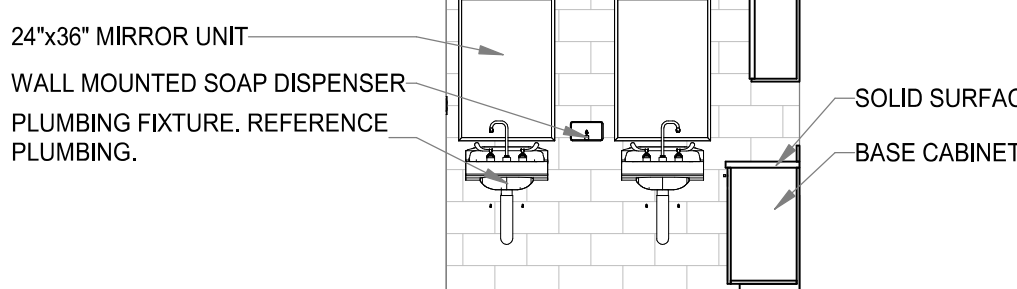
**18 MENS 061 - WEST ELEVATION**  
SCALE: 1/4" = 1'-0"



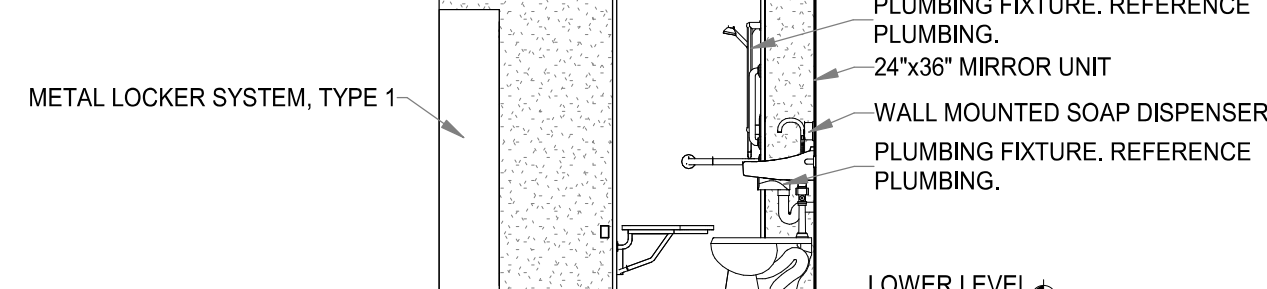
12 TOILET/SHOWER 015 - EAST ELEVATION  
SCALE: 1/4" = 1'-0"



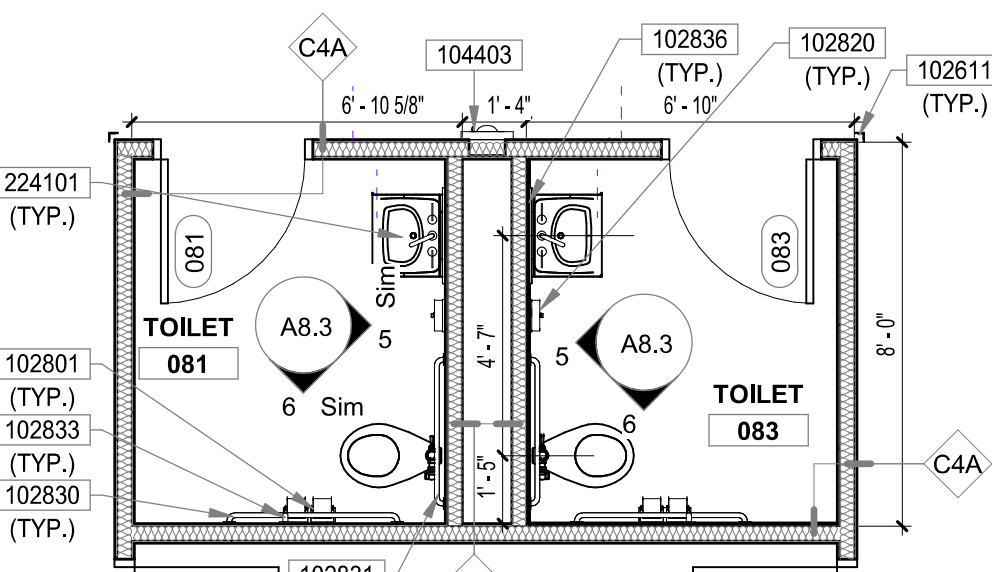
**5 TOILET 083 - WEST ELEVATION**  
SCALE: 1/4" = 1'-0"



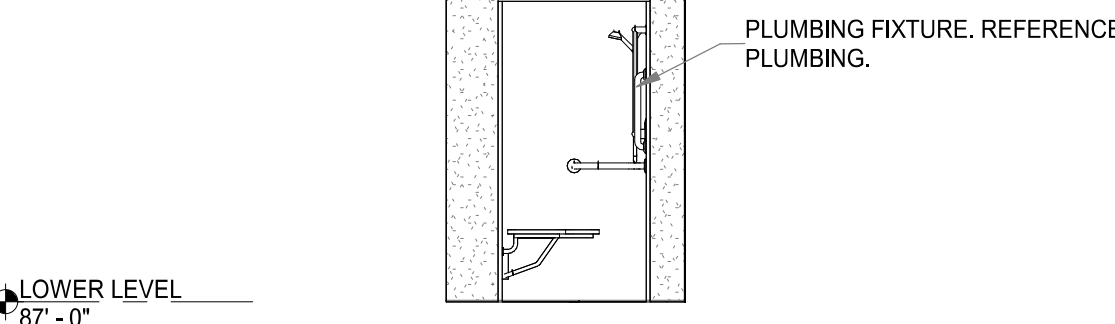
**17 MENS 061 - EAST ELEVATION**  
SCALE: 1/4" = 1'-0"



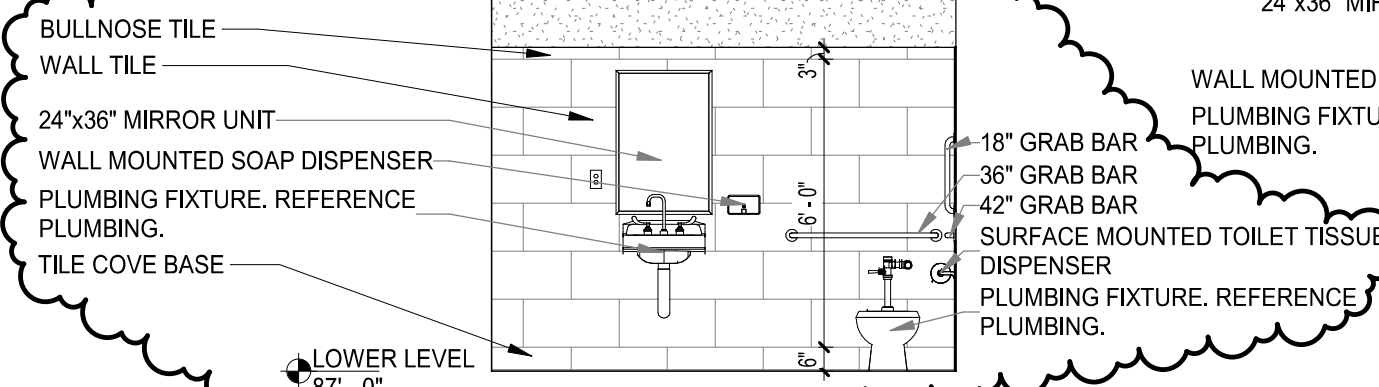
11 TOILET/SHOWER 015 - SOUTH ELEVATION  
SCALE: 1/4" = 1'-0"



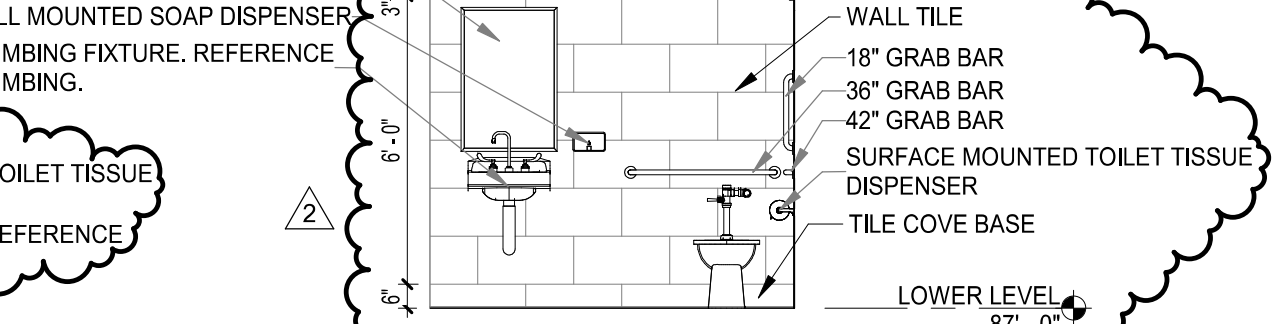
**4 LOWER LEVEL FLOOR PLAN - TOILETS 081/083**  
SCALE: 1/4" = 1'-0"



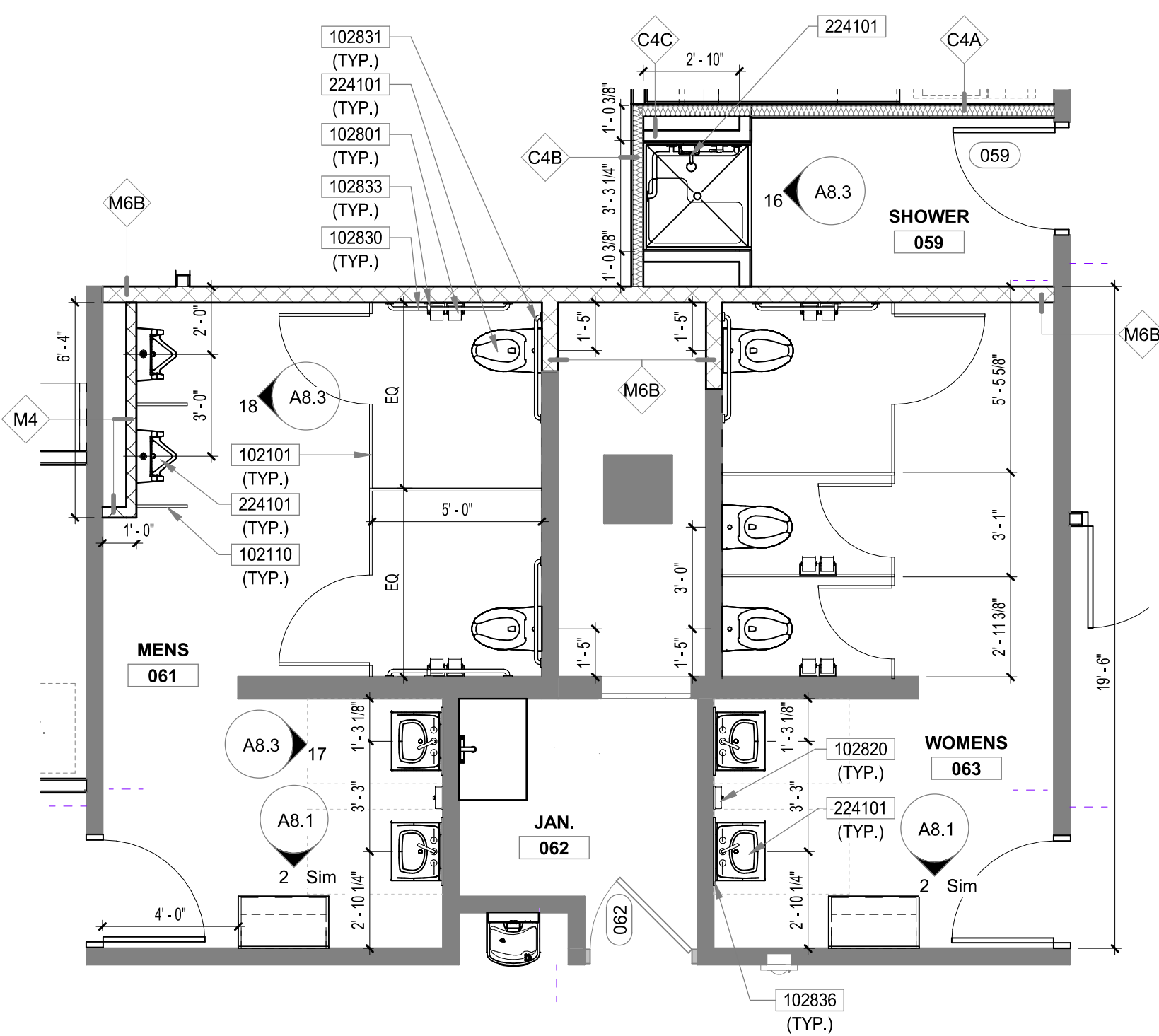
**16** **SHOWER 059 - WEST ELEVATION**  
SCALE: 1/4" = 1'-0"



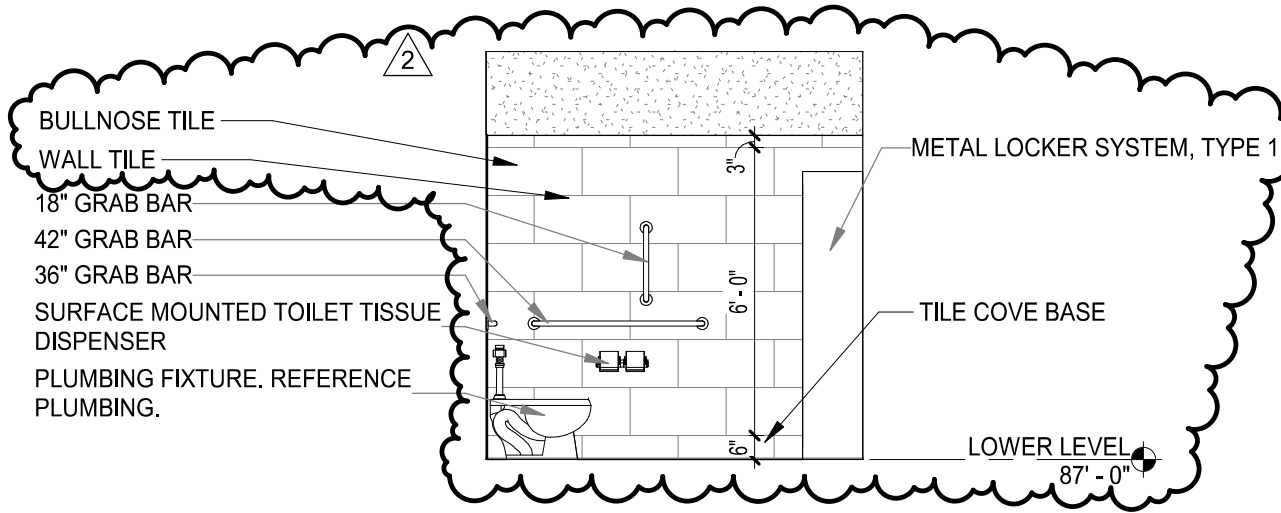
**10 TOILET/ShOWER 015 - WEST ELEVATION**



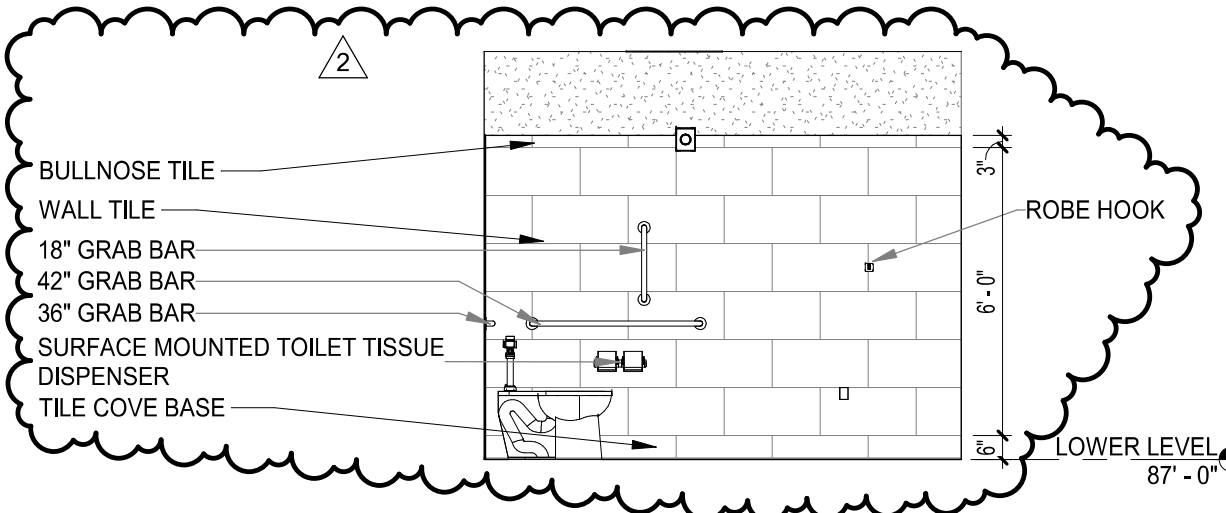
**3 TOILET 068 - NORTH ELEVATION**  
SCALE: 1/4" = 1'-0"



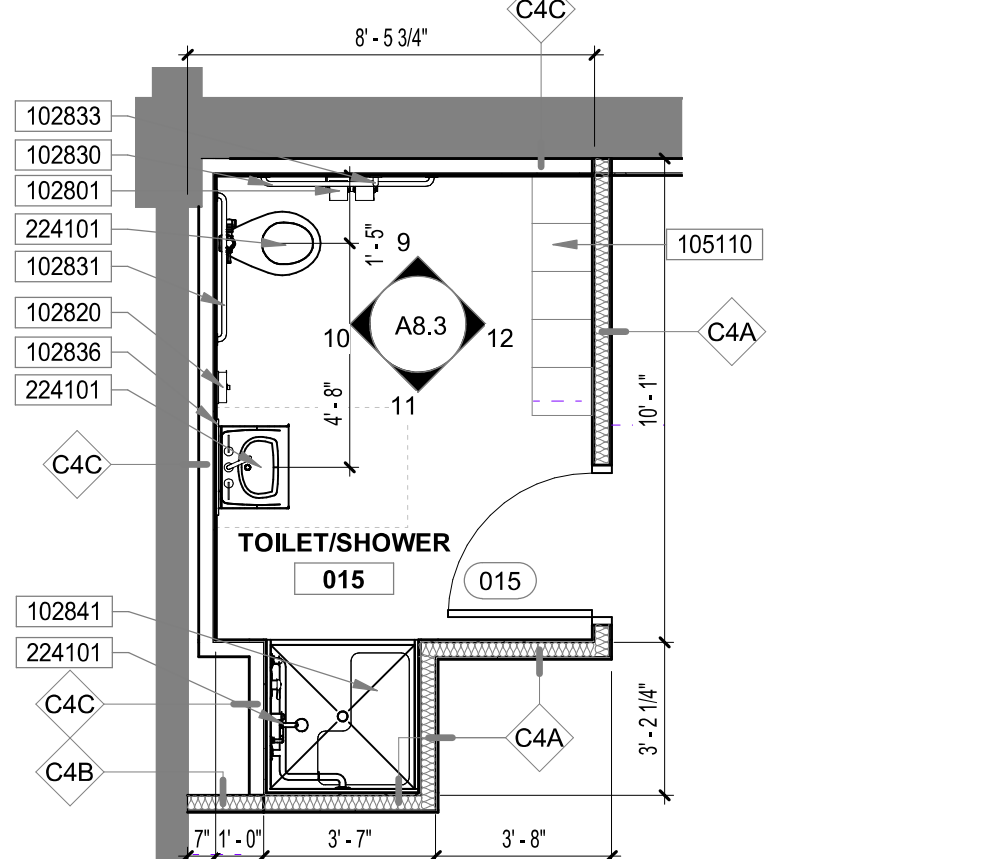
**15 LOWER LEVEL FLOOR PLAN -MEN'S/WOMEN'S/SHOWER**  
SCALE: 1/4" = 1'-0"



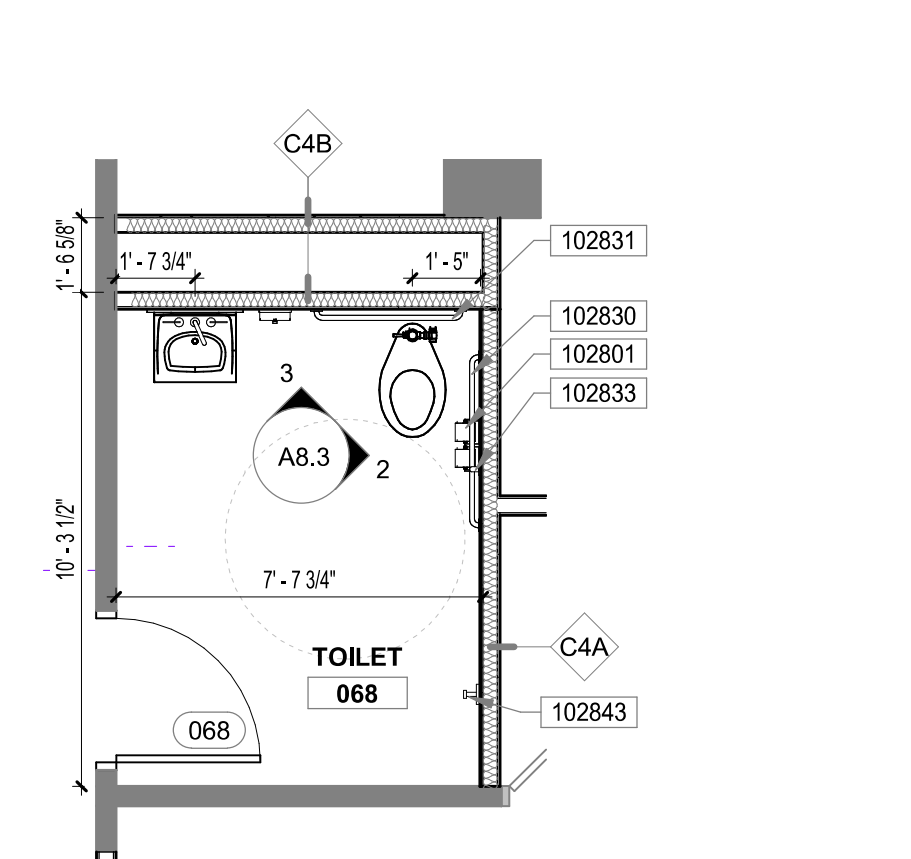
9 TOILET/SHOWER 015 - NORTH ELEVATION  
SCALE: 1/4" = 1'-0"



**2 TOILET 068 - EAST ELEVATION**  
SCALE: 1/4" = 1'-0"



**8 LOWER LEVEL FLOOR PLAN - TOILET/SHOWER**  
SCALE: 1/4" = 1'-0"



1 LOWER LEVEL FLOOR PLAN - TOILET 068  
SCALE: 1/4" = 1'-0"

**GENERAL NOTES:**

- A. REFER TO G1.1 FOR ADDITIONAL GENERAL NOTES AND INFORMATION.
- B. REFER TO SHEET G1.3 FOR STANDARD ADA MOUNTING HEIGHTS OF ALL FIXTURES, ACCESSORIES, AND SIGNAGE.

## KEYNOTES

- 102101 TOILET COMPARTMENT, FLOOR ANCHORED AND  
OVERHEAD-BRACED
- 102110 WALL-MOUNTED URINAL SCREEN
- 102111 48" SURFACE MOUNTED CORNER GUARD
- 102801 SURFACE MOUNTED TOILET TISSUE DISPENSER
- 102820 WALL MOUNTED SOAP DISPENSER
- 102830 42" GRAB BAR
- 102831 36" GRAB BAR
- 102833 18" GRAB BAR
- 102836 24"x36" MIRROR UNIT
- 102841 FOLDING SHOWER SEAT
- 102843 ROBE HOOK
- 104410 RECESSED CABINET FRYE EXTINGUISHER, TYPE A-B-C
- 105101 METAL LOCKER SYSTEM, TYPE 1
- 123211 BASE CABINET
- 123601 SLOD SURFACE COUNTERTOP
- 224101 PLUMBING FIXTURE, REFERENCE PLUMBING.