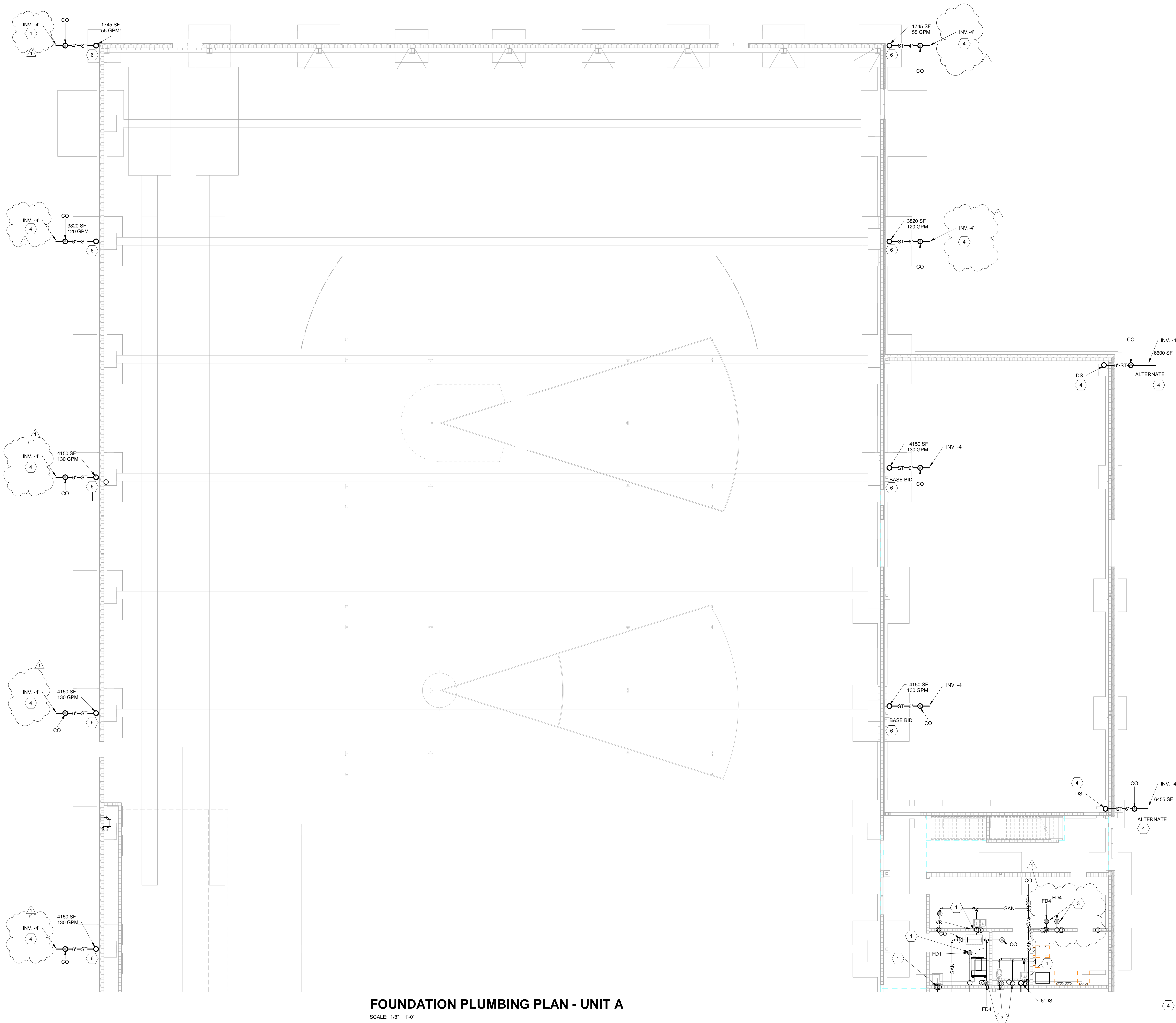


C:\Users\zawak\Documents\2023\_FLUM\_222130.00\_cawak6CHC2.rvt  
1/23/2024 3:12:29 PM



FOUNDATION PLUMBING PLAN - UNIT A

SCALE: 1/8" = 1'-0"

ALTERNATE NOTE:  
REFER TO ALTERNATE NOTES ON DRAWINGS, ARCHITECTURAL  
DRAWINGS, AND FRONT END SPECIFICATIONS.

CODED NOTES

- 2" WASTE FROM ABOVE.
- 3" WASTE FROM ABOVE.
- 4" WASTE FROM ABOVE.
- EXTEND PIPING THROUGH BUILDING WALL AND  
CONNECT TO SCOPE INDICATED ON SITE UTILITY  
DRAWINGS. COORDINATE EXACT LOCATIONS  
WITH SITE UTILITY CONTRACTOR.
- NATURAL GAS SERVICE. COORDINATE PIPING WITH  
NIPSCO.
- PROVIDE DUCTILE IRON DOWNSPOUT BOOT TO  
ACCOMMODATE DOWNSPOUT. REFER TO PLANS  
FOR PIPE SIZES AND COORDINATE WITH GENERAL  
TRADES. EXTEND TO SEWER CONNECTION. BOOT  
SHALL BE EQUAL TO J.R. HOE WITH  
SQUARE/RECTANGULAR INLET, ROUND OUTLET,  
WITH LUG SUPPORT FLANGES AND CLEANOUT.

COPYRIGHT 2024 BY FANNINGHOWEY ASSOCIATES, INC.

PENN HIGH  
SCHOOL  
FIELDHOUSE

12641 McKinley Highway, Mishawaka,  
Indiana 46545

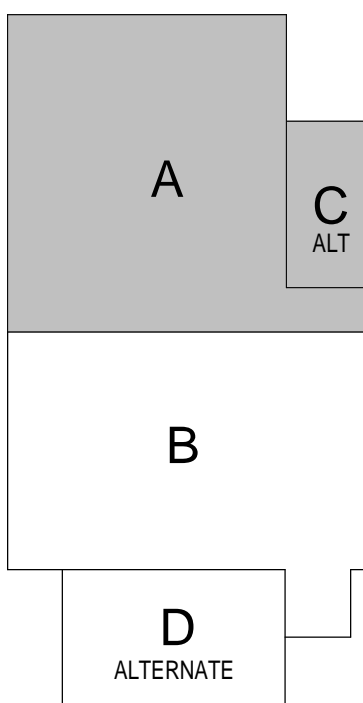
PENN-HARRIS-MADISON  
SCHOOL CORPORATION



ARCHITECT

FANNING  
HOWEY

317.848.0966 WWW.FHAI.COM  
350 E NEW YORK ST #300 INDIANAPOLIS, IN 46204



KEY PLAN

Construction Documents



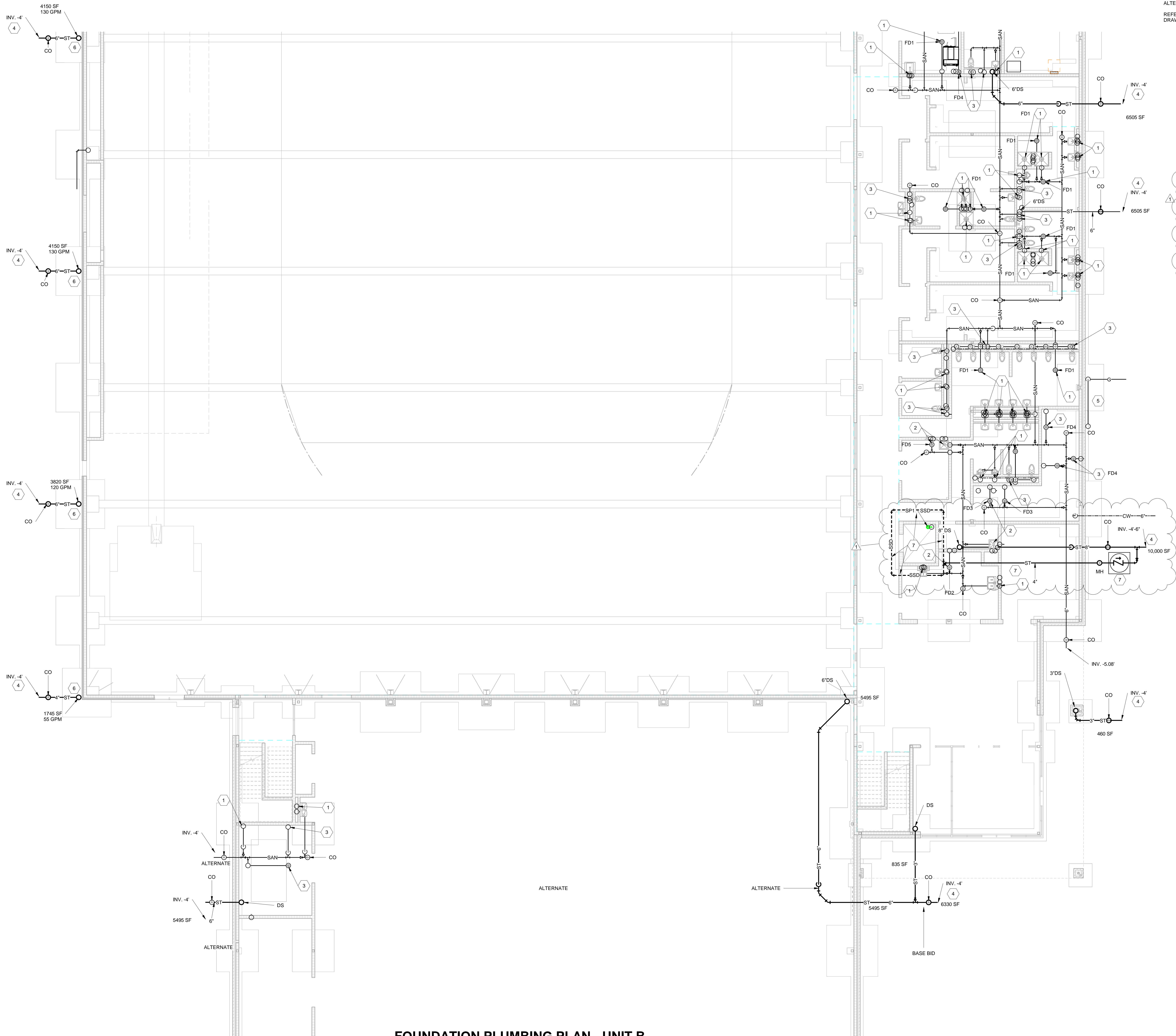
DRAWN BY: CSS  
PROJECT NUMBER: 222130  
PROJECT ISSUE DATE: January 10, 2024

REV. NO.	DESCRIPTION	DATE
1	ADDENDUM 1	01/26/24

FOUNDATION PLUMBING PLAN -  
UNIT A

PF11A

C:\Users\zawak\Documents\2023\_FLUM\_222130.00\_rawak6CH2.rvt  
1/26/2024 12:08:20 PM



ALTERNATE NOTE:  
REFER TO ALTERNATE NOTES ON DRAWINGS, ARCHITECTURAL  
DRAWINGS, AND FRONT END SPECIFICATIONS.

CODING NOTES

- 2" WASTE FROM ABOVE.
- 3" WASTE FROM ABOVE.
- 4" WASTE FROM ABOVE.
- EXTEND PIPING THROUGH BUILDING WALL AND  
CONNECT TO SCOPE INDICATED ON SITE UTILITY  
DRAWINGS. COORDINATE EXACT LOCATIONS  
WITH SITE UTILITY CONTRACTOR.
- NATURAL GAS SERVICE, COORDINATE PIPING WITH  
NIPSCO.
- PROVIDE DUCTILE IRON DOWNSPOUT BOOT TO  
ACCOMMODATE DOWNSPOUT. REFER TO PLANS  
FOR PIPE SIZES AND COORDINATE WITH GENERAL  
TRADES. EXTEND TO SEWER CONNECTION. BOOT  
SHALL BE EQUAL TO J.R. HOE WITH  
SQUARE/RECTANGULAR INLET, ROUND OUTLET,  
WITH LUG SUPPORT FLANGES AND CLEANOUT.
- PROVIDE 4" SUB SOIL DRAINAGE PERIMETER  
PIPING AROUND ELEVATOR PIT FOOTER. REFER TO  
DETAIL SHEET P501. TRANSITION FROM WRAPPED  
PERFORATED PIPING TO SOLID WALL STORM  
PIPING. PENETRATE FOUNDATION WALL AT  
SLEEVE. EXTEND THROUGH BACKWATER VALVE  
AND CONNECT TO STORM SEWER PRIOR TO  
SITE SEWER CONNECTION. PROVIDE CONCRETE  
MANHOLE WITH DOT RATING DUCTILE IRON  
MANHOLE LID AND FRAME.

FOUNDATION PLUMBING PLAN - UNIT B

SCALE: 1/8" = 1'-0"

COPYRIGHT 2024 BY FANNINGHOWE ASSOCIATES, INC.

PENN HIGH  
SCHOOL  
FIELDHOUSE

12641 McKinley Highway, Mishawaka,  
Indiana 46545

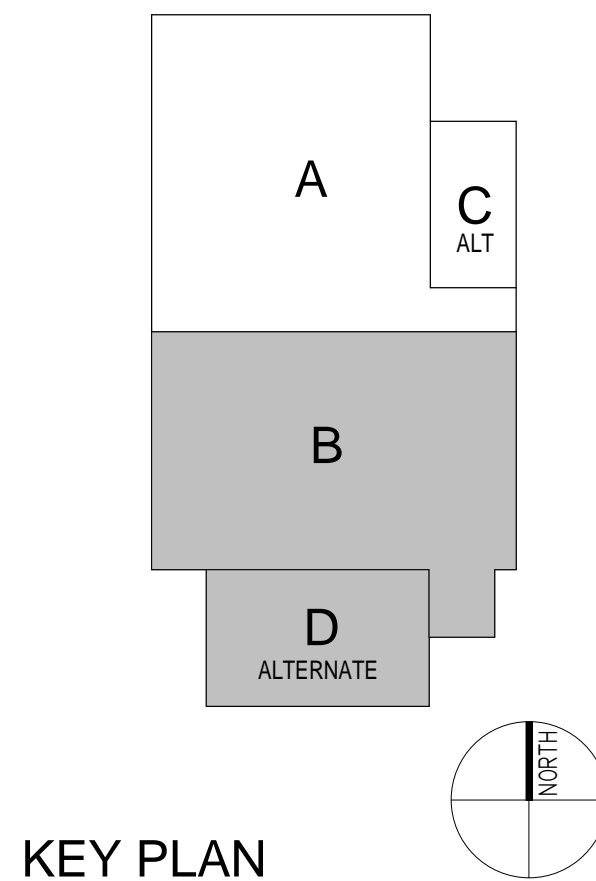
PENN-HARRIS-MADISON  
SCHOOL CORPORATION



ARCHITECT

FANNING  
HOWE

317.848.0966 WWW.FHAI.COM  
350 E NEW YORK ST #300 INDIANAPOLIS, IN 46204



KEY PLAN

Construction Documents



DRAWN BY: CSS

PROJECT NUMBER: 222130

PROJECT ISSUE DATE: January 10, 2024

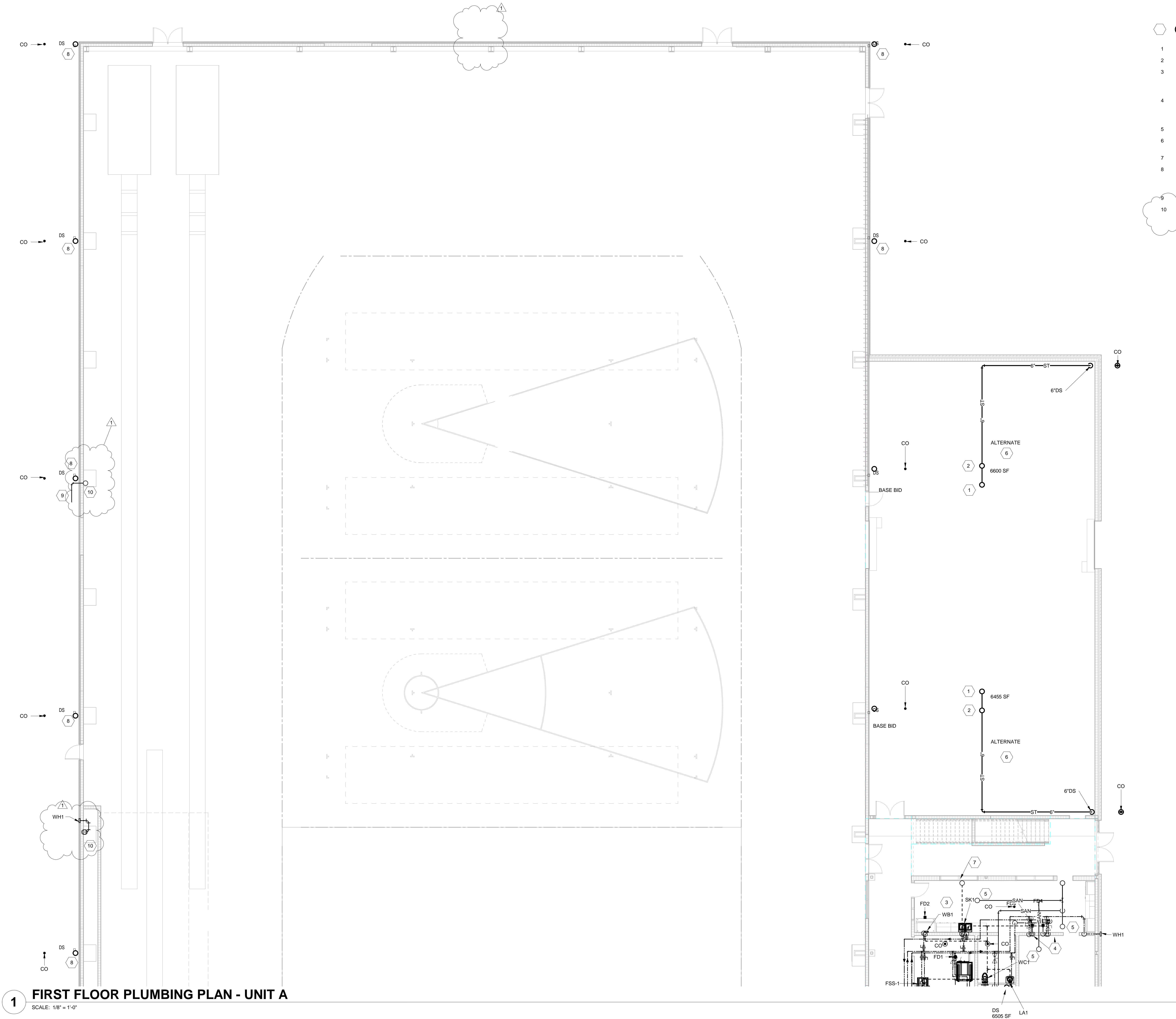
REV. NO.	DESCRIPTION	DATE
1	ADDENDUM 1	01/26/24

FOUNDATION PLUMBING PLAN -  
UNIT B

PF11B



C:\Users\zawak\Documents\2023\_FLUM\_222130.00\_cawak6CHC2.rvt  
1/23/2024 3:12:41 PM



**1 FIRST FLOOR PLUMBING PLAN - UNIT A**  
SCALE: 1/8" = 1'-0"

ALTERNATE NOTE:  
REFER TO ALTERNATE NOTES ON DRAWINGS, ARCHITECTURAL  
DRAWINGS, AND FRONT END SPECIFICATIONS.

#### CODED NOTES

- 1 ROOF DRAIN ABOVE.
- 2 OVERFLOW DRAIN ABOVE.
- 3 PROVIDE IN-LINE WATER FILTER, EVERPURE INSURICE 2000 AND WATTS MODEL SD3 BACKFLOW ON COLD WATER SUPPLY TO ICE MACHINE.
- 4 PROVIDE 1" CW AND HW CONNECTIONS TO HYDROTHERAPY TUB MIXING VALVES REFER TO SPECIFICATIONS. PROVIDE "B" SIZE WATER HAMMER ARRESTOR ON EACH SUPPLY.
- 5 4" SANITARY FROM FLOOR DRAIN ABOVE.
- 6 SCOPE INDICATED IN THIS AREA IS INCLUDED UNDER ALTERNATE SCOPE.
- 7 VENT RISER.
- 8 PROVIDE DUCTILE IRON DOWNSPOUT BOOT TO ACCOMMODATE DOWNSPOUT. REFER TO PLANS FOR PIPE SIZES AND COORDINATE WITH GENERAL TRADES. EXTEND TO SEWER CONNECTION.
- 9 GAS SUPPLY TO EQUIPMENT.
- 10 PIPING DROP TIGHT TO STRUCTURE.

COPYRIGHT 2024 BY FANNINGHOWEY ASSOCIATES, INC.

## PENN HIGH SCHOOL FIELDHOUSE

12641 McKinley Highway, Mishawaka, Indiana 46545

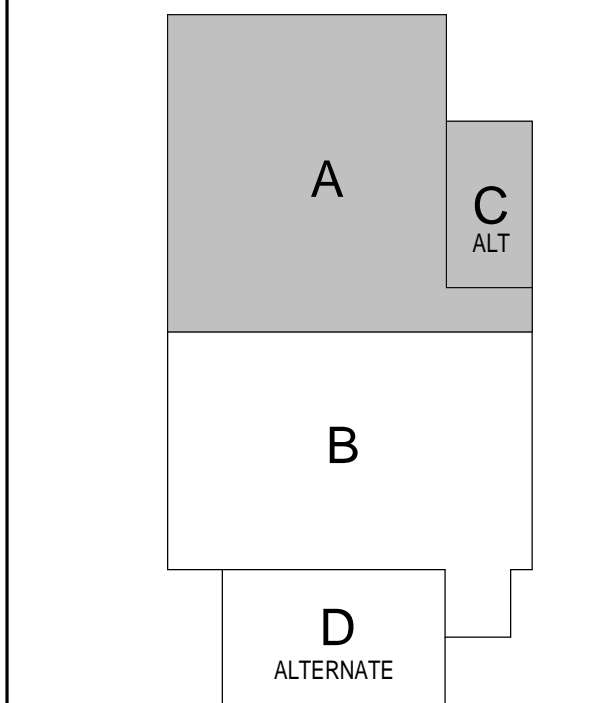
### PENN-HARRIS-MADISON SCHOOL CORPORATION



ARCHITECT

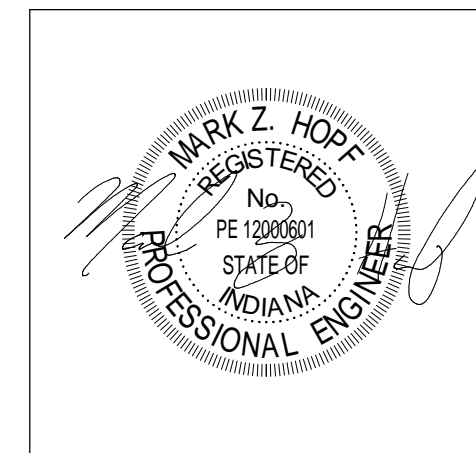
## FANNING HOWEY

317.848.0966 WWW.FHAI.COM  
350 E NEW YORK ST #300 INDIANAPOLIS, IN 46204



#### KEY PLAN

##### Construction Documents

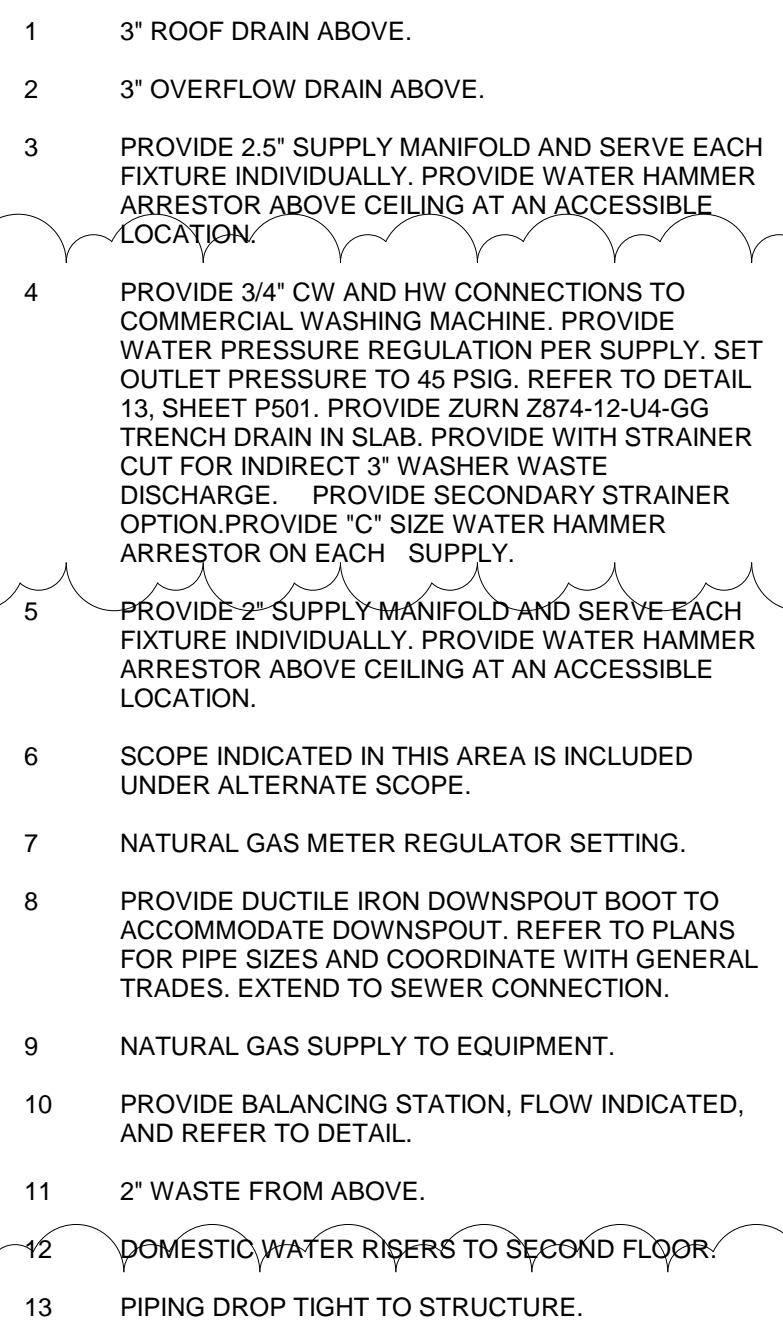


DRAWN BY: CSS  
PROJECT NUMBER: 222130  
PROJECT ISSUE DATE: January 10, 2024

REV. NO.	DESCRIPTION	DATE
1	ADDENDUM 1	01/26/24

FIRST FLOOR PLUMBING PLAN - UNIT A

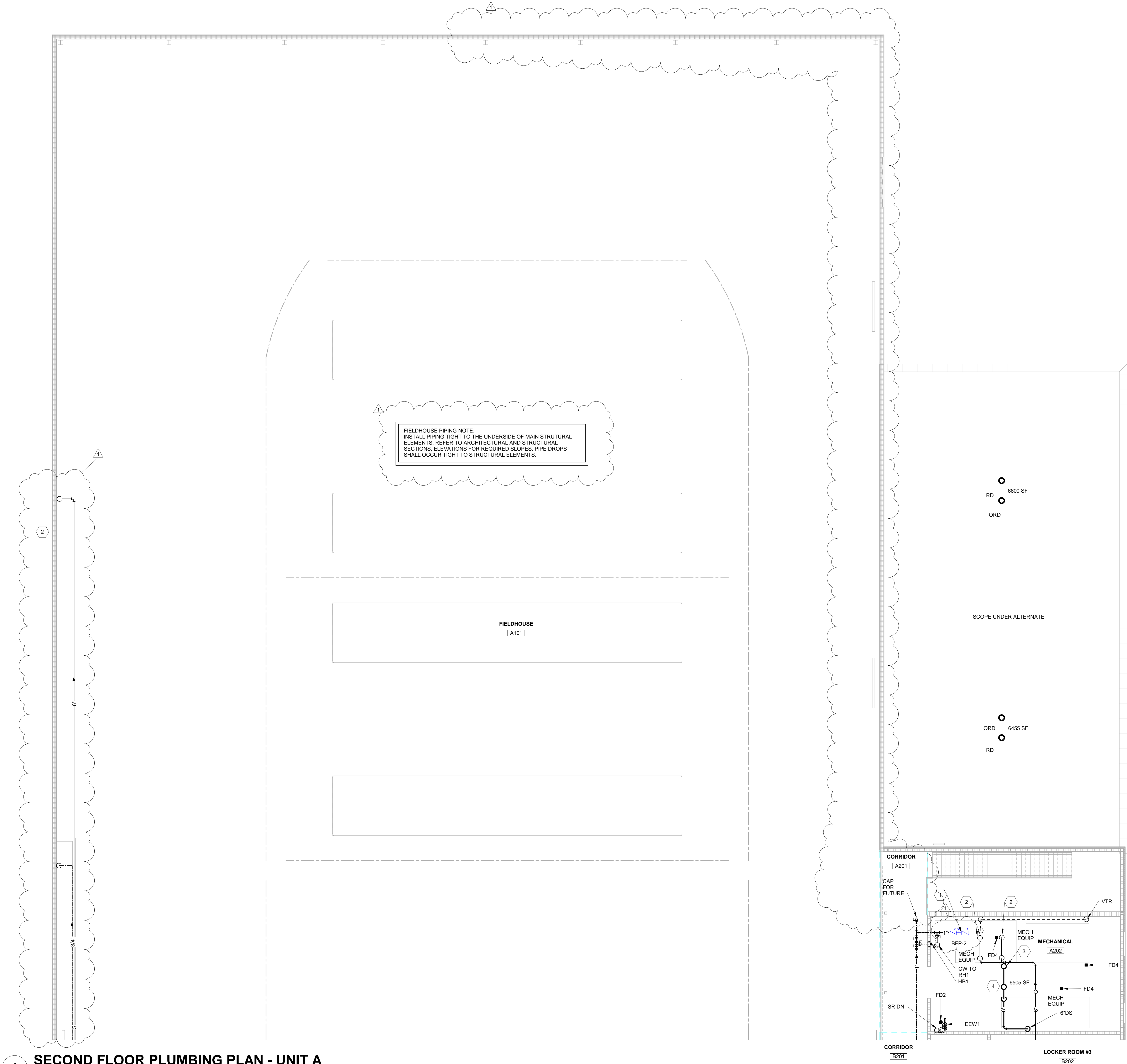
# PL11A



**1 FIRST FLOOR PLUMBING PLAN - UNIT B**  
SCALE: 1/8" = 1'-0"



C:\Users\zawak\Documents\2023\_FLUM\_222180.00\_cawak6CH2.nt  
1/23/2024 3:12:47 PM



ALTERNATE NOTE:

REFER TO ALTERNATE NOTES ON DRAWINGS, ARCHITECTURAL DRAWINGS, AND FRONT END SPECIFICATIONS.

#### CODED NOTES

- 1 PROVIDE REDUCED PRESSURE ZONE BACKFLOW PREVENTER TO SERVE MECHANICAL MAKEUP WATER SUPPLY. COORDINATE EXACT CONNECTION LOCATION WITH MECHANICAL TRADES. PROVIDE HIGH TEMPERATURE RATED CHECK VALVE DOWNSTREAM OF BACKFLOW AND CONNECT TO SCOPE BY MECHANICAL. EXTEND BACKFLOW AIRGAP DISCHARGE TO ADJACENT FLOOR SINK.
- 2 NATURAL GAS CONNECTION TO EQUIPMENT.
- 3 FROM ROOF DRAIN ABOVE.
- 4 FROM OVERFLOW ROOF DRAIN ABOVE.
- 5 PIPE DROPS TIGHT TO COLUMN, ALL FIELDHOUSE LOCATIONS.

COPYRIGHT 2024 BY FANNINGHOWEY ASSOCIATES, INC.

## PENN HIGH SCHOOL FIELDHOUSE

12641 McKinley Highway, Mishawaka, Indiana 46545

PENN-HARRIS-MADISON SCHOOL CORPORATION



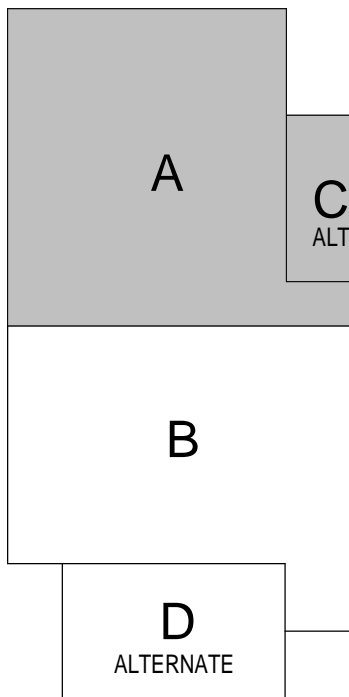
ARCHITECT

# FANNING HOWEY

317.848.0966

WWW.FHAI.COM

350 E NEW YORK ST #300 INDIANAPOLIS, IN 46204



#### KEY PLAN

Construction Documents



DRAWN BY: CSS

PROJECT NUMBER: 222130

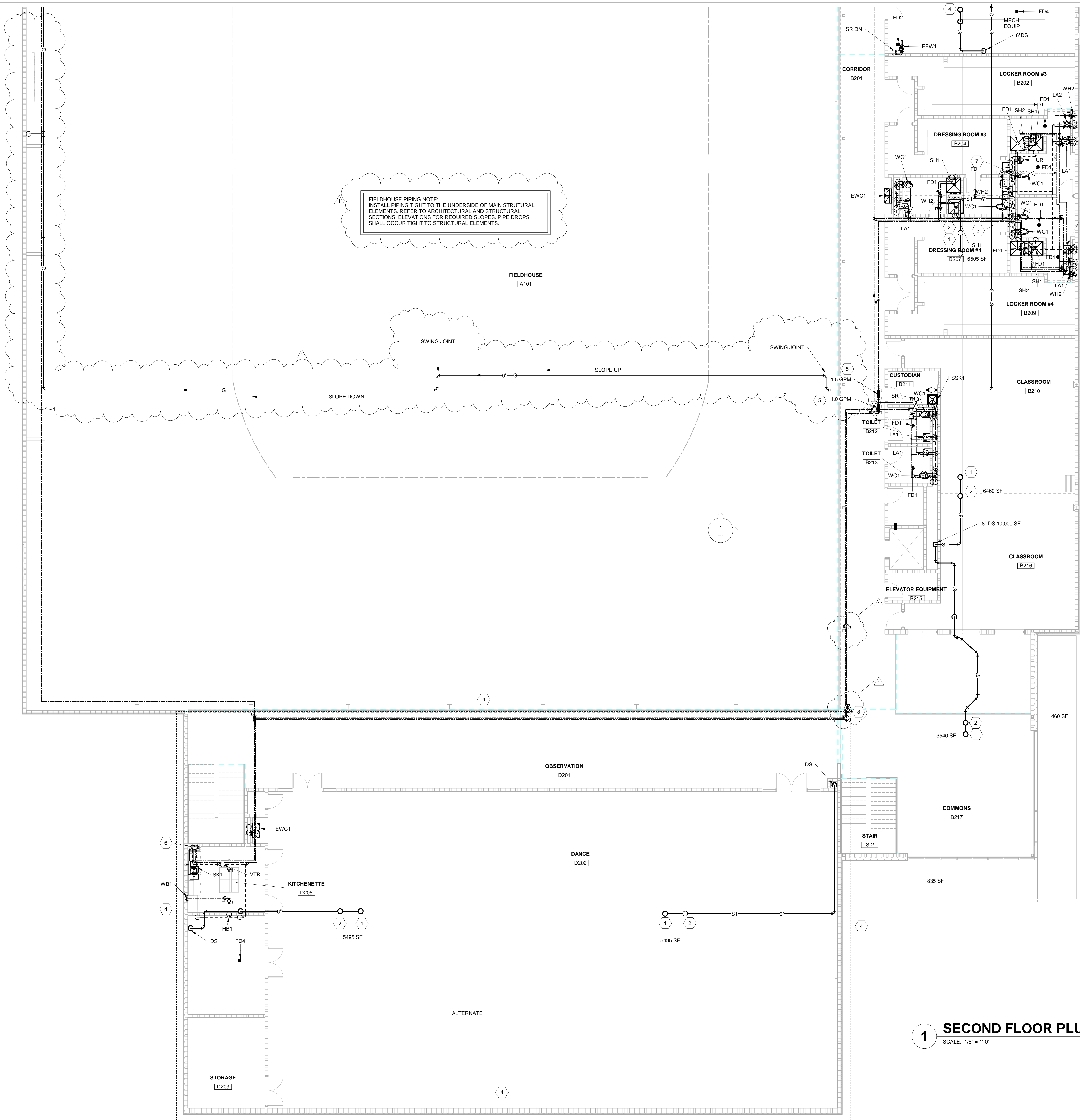
PROJECT ISSUE DATE: January 10, 2024

REV. NO.	DESCRIPTION	DATE
1	ADDENDUM 1	01/26/24

SECOND FLOOR PLUMBING PLAN - UNIT A

# PL12A

C:\Users\zawak\Documents\2023\_PLUM\_222130.00\_cawak\CH2.rvt  
1/23/2024 3:12:52 PM



ALTERNATE NOTE:  
REFER TO ALTERNATE NOTES ON DRAWINGS, ARCHITECTURAL  
DRAWINGS, AND FRONT END SPECIFICATIONS.

- CODED NOTES**
- 6" ROOF DRAIN ABOVE.
  - 6" OVERFLOW DRAIN ABOVE.
  - PROVIDE 2" FULL SIZE SUPPLY MANIFOLD IN CHASE TO SERVE ALL FIXTURES INDIVIDUALLY. PROVIDE WATER HAMMER ARRESTOR ABOVE CEILING ELEVATION AT AN ACCESSIBLE LOCATION.
  - AREA INCLUDED IN THE ALTERNATE SCOPE.
  - DOMESTIC HOT WATER FLOW CONTROL STATION. FLOW RATE PER PLANS. REFER TO DETAIL.
  - SUPPLY WATER AND VENT PIPING SERVING SINK DROPS IN CHASE. SUPPLIES OFFSET TIGHT TO BACK OF CASEWORK TO CONNECTION AT SINK FAUCET. INSTALL AND ROUTE P-TRAP AND FUTURE DRAIN TO SIDE CHASE FOR DROP THROUGH FLOOR AND DRY VENT CONNECTION.
  - PROVIDE 1.5" FULL SIZE SUPPLY MANIFOLD IN CHASE TO SERVE ALL FIXTURES INDIVIDUALLY. PROVIDE WATER HAMMER ARRESTOR ABOVE CEILING ELEVATION AT AN ACCESSIBLE LOCATION.
  - PROVIDE SHUT OFF VALVE AND CAP PER SYSTEM TO ACCOMMODATE FUTURE ADDITION. PROVIDE VALVED HOT WATER CIRCULATION PATH SHUT OFF VALVE THAT BRANCHES BETWEEN SUPPLY AND RETURN PIPING. LOOP VALVE NORMALLY OPEN UNDER BASE BID. UNDER ALTERNATE CONDITION, LOOP SHUT OFF VALVE NORMALLY CLOSED.

COPYRIGHT 2024 BY FANNINGHOWE ASSOCIATES, INC.

## PENN HIGH SCHOOL FIELDHOUSE

12641 McKinley Highway, Mishawaka, Indiana 46545

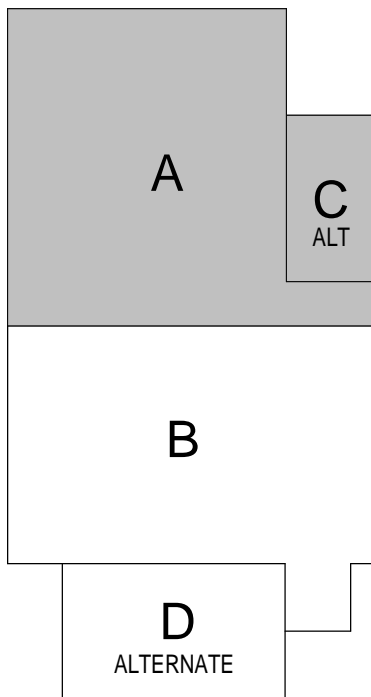
PENN-HARRIS-MADISON SCHOOL CORPORATION



ARCHITECT

# FANNING HOWEY

317.848.0966 WWW.FHAI.COM  
350 E NEW YORK ST #300 INDIANAPOLIS, IN 46204



### KEY PLAN

Construction Documents



DRAWN BY: CSS  
PROJECT NUMBER: 222130  
PROJECT ISSUE DATE: January 10, 2024

REV. NO.	DESCRIPTION	DATE
1	ADDENDUM 1	01/26/24

SECOND FLOOR PLUMBING PLAN - UNIT B

## PL12B

## 1 SECOND FLOOR PLUMBING PLAN - UNIT B

SCALE: 1/8" = 1'-0"



**PENN HIGH  
SCHOOL  
FIELDHOUSE**

12641 McKinley Highway, Mishawaka,  
Indiana 46545

**PENN-HARRIS-MADISON  
SCHOOL CORPORATION**

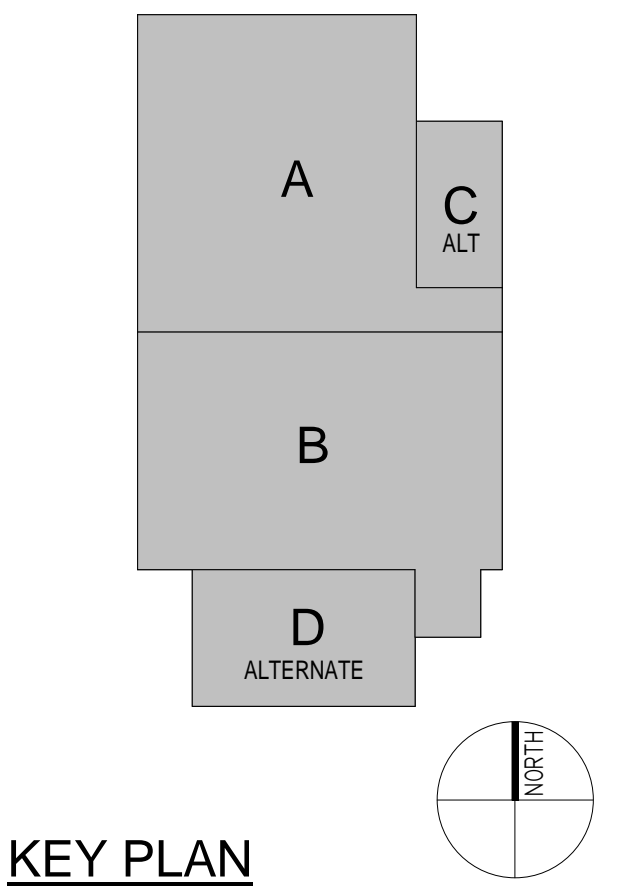


ARCHITECT



**FANNING  
HOWEY**

317.848.0966 WWW.FHAI.COM  
350 E NEW YORK ST #300 INDIANAPOLIS, IN 46204



**KEY PLAN**

## Construction Documents



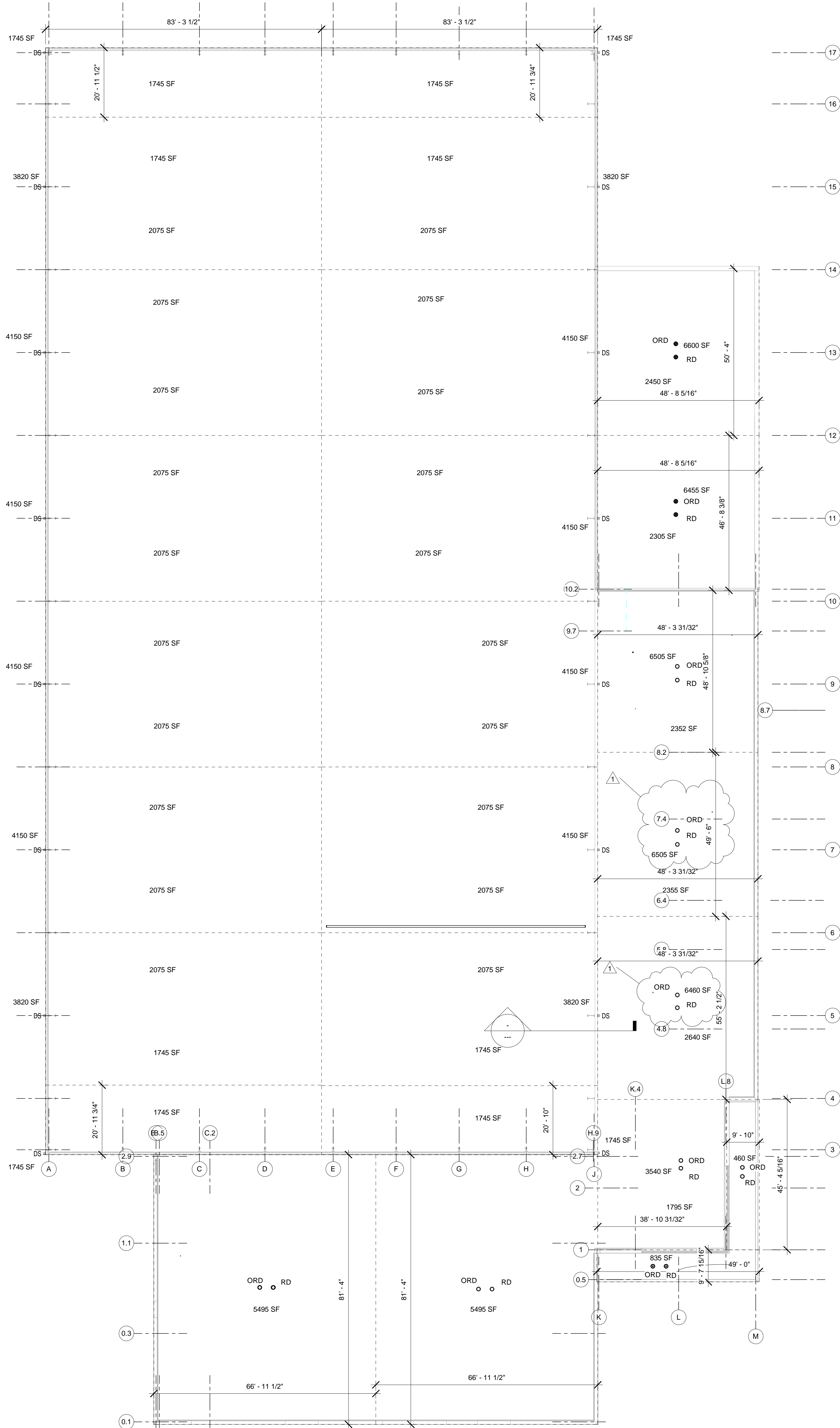
DRAWN BY: CSS  
PROJECT NUMBER: 222130  
PROJECT ISSUE DATE: January 10, 2024

[illegible]

## PLUMBING ROOF PLAN

PR101

ALTERNATE NOTE:  
REFER TO ALTERNATE NOTES ON DRAWINGS, ARCHITECTURAL  
DRAWINGS, AND FRONT END SPECIFICATIONS.



## 1 Roof Plan

SCALE: 1/16" = 1'-0"

PENN HIGH SCHOOL FIELDHOUSE

12641 McKinley Highway, Mishawaka, Indiana 46545

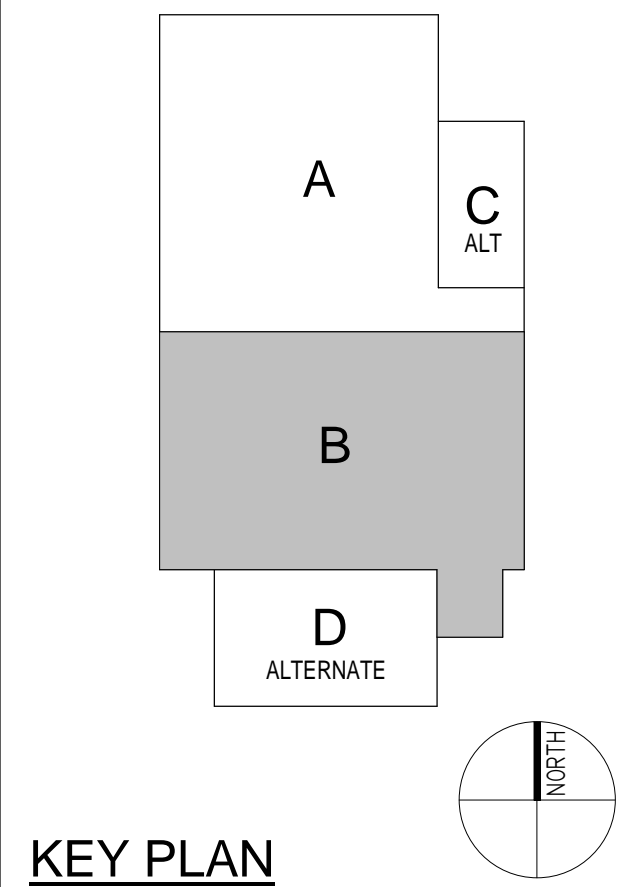
PENN-HARRIS-MADISON SCHOOL CORPORATION



ARCHITECT



317.848.0966 WWW.FHAI.COM  
350 E NEW YORK ST #300 INDIANAPOLIS, IN 46204



KEY PLAN

Construction Documents



DRAWN BY: CSS

PROJECT NUMBER: 222130

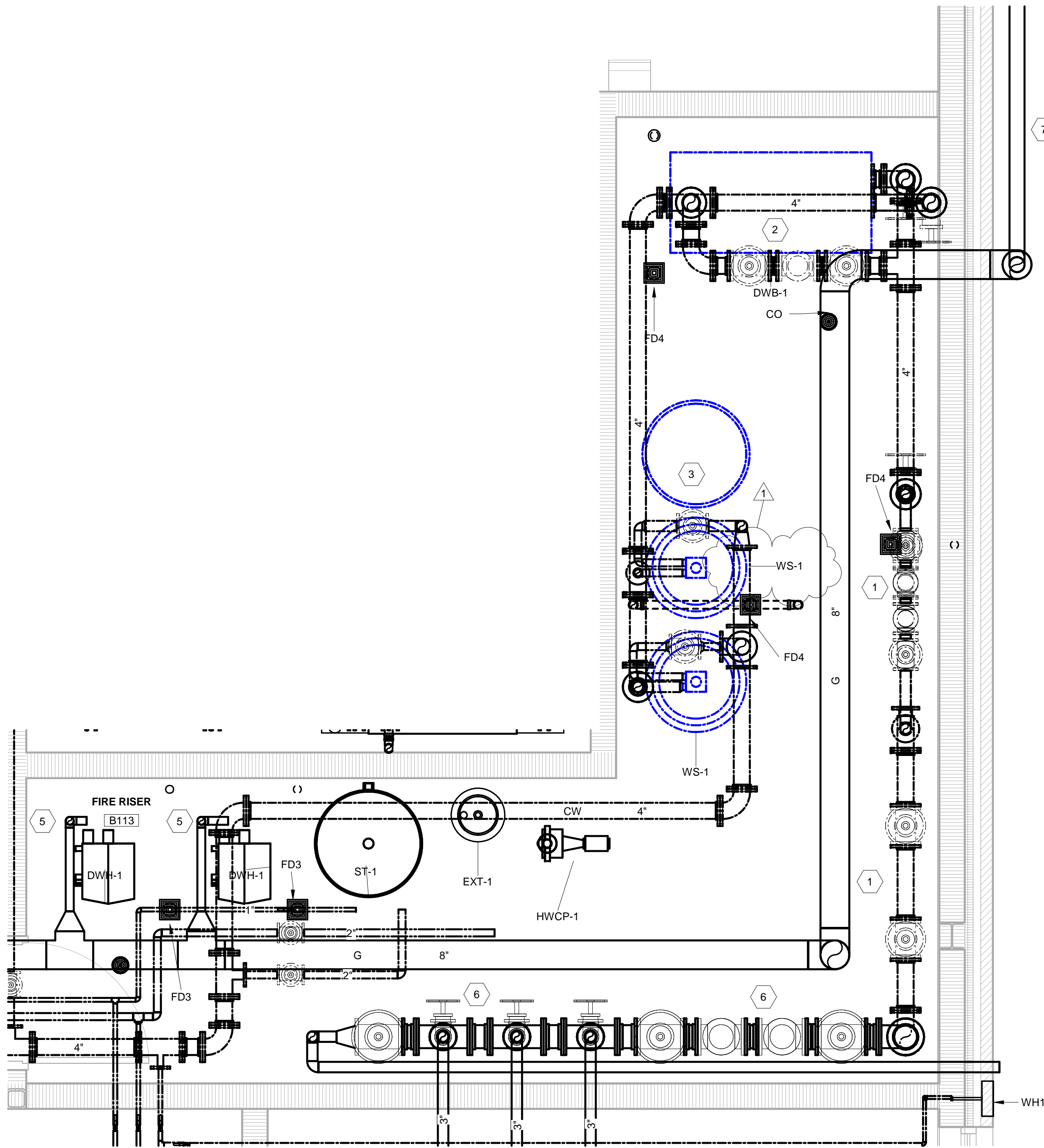
PROJECT ISSUE DATE: January 10, 2024

REV. NO.	DESCRIPTION	DATE
1	ADDENDUM 1	01/26/24

ENLARGED MECHANICAL ROOM PLUMBING PLAN

P-402

- CODED NOTES**
- WATER METER AND DOMESTIC BACKFLOW. REFER TO DETAIL 12, P501.
  - DOMESTIC WATER BOOSTER PUMP WITH FULL SIZE CHECK VALVE BYPASS.
  - DOMESTIC WATER SOFTENER. REFER TO DETAIL.
  - DOMESTIC WATER HEATING PLANT. REFER TO DETAIL.
  - NATURAL GAS SUPPLY DROP TO WATER HEATER. PROVIDE VALVED CONNECTION, DIRTLEG AND APPLIANCE REGULATOR.
  - FIRE RISERS AND SERVICE.
  - GAS METER AND REGULATOR SETTING.



**1 WATER SERVICE ROOM**  
SCALE: 1/2" = 1'-0"



# PENN HIGH SCHOOL FIELDHOUSE

12641 McKinley Highway, Mishawaka, Indiana 46545

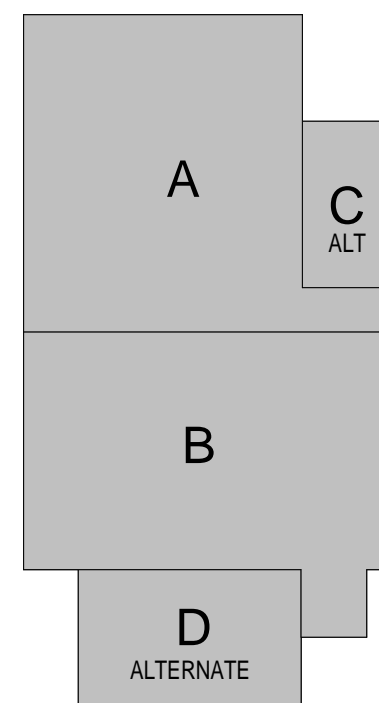
## PENN-HARRIS-MADISON SCHOOL CORPORATION



ARCHITECT

# FANNING HOWEY

317.848.0966 WWW.FHAI.COM  
350 E NEW YORK ST #300 INDIANAPOLIS, IN 46204



## KEY PLAN

### Construction Documents

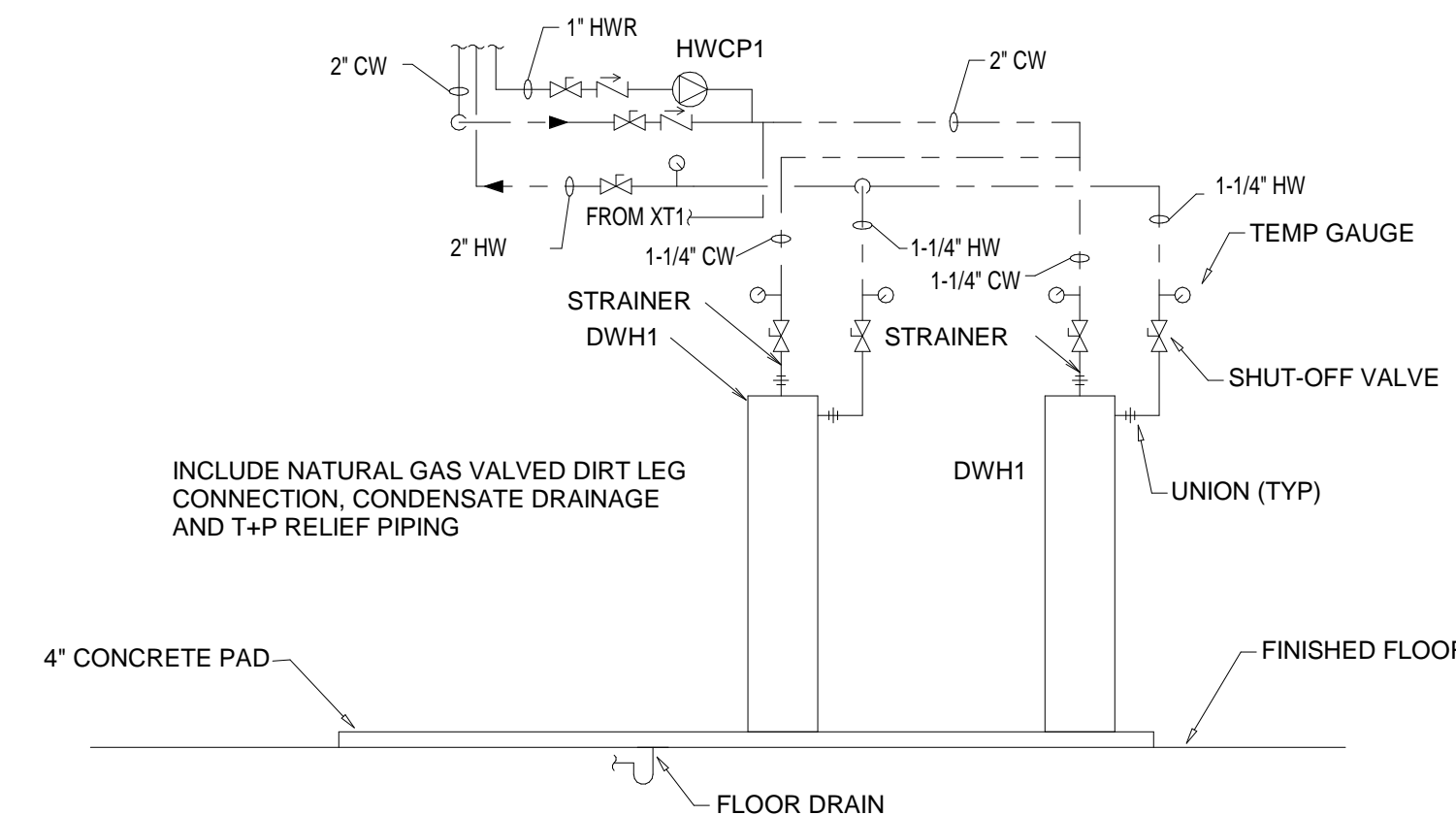


DRAWN BY: CSS  
PROJECT NUMBER: 222130  
PROJECT ISSUE DATE: January 10, 2024

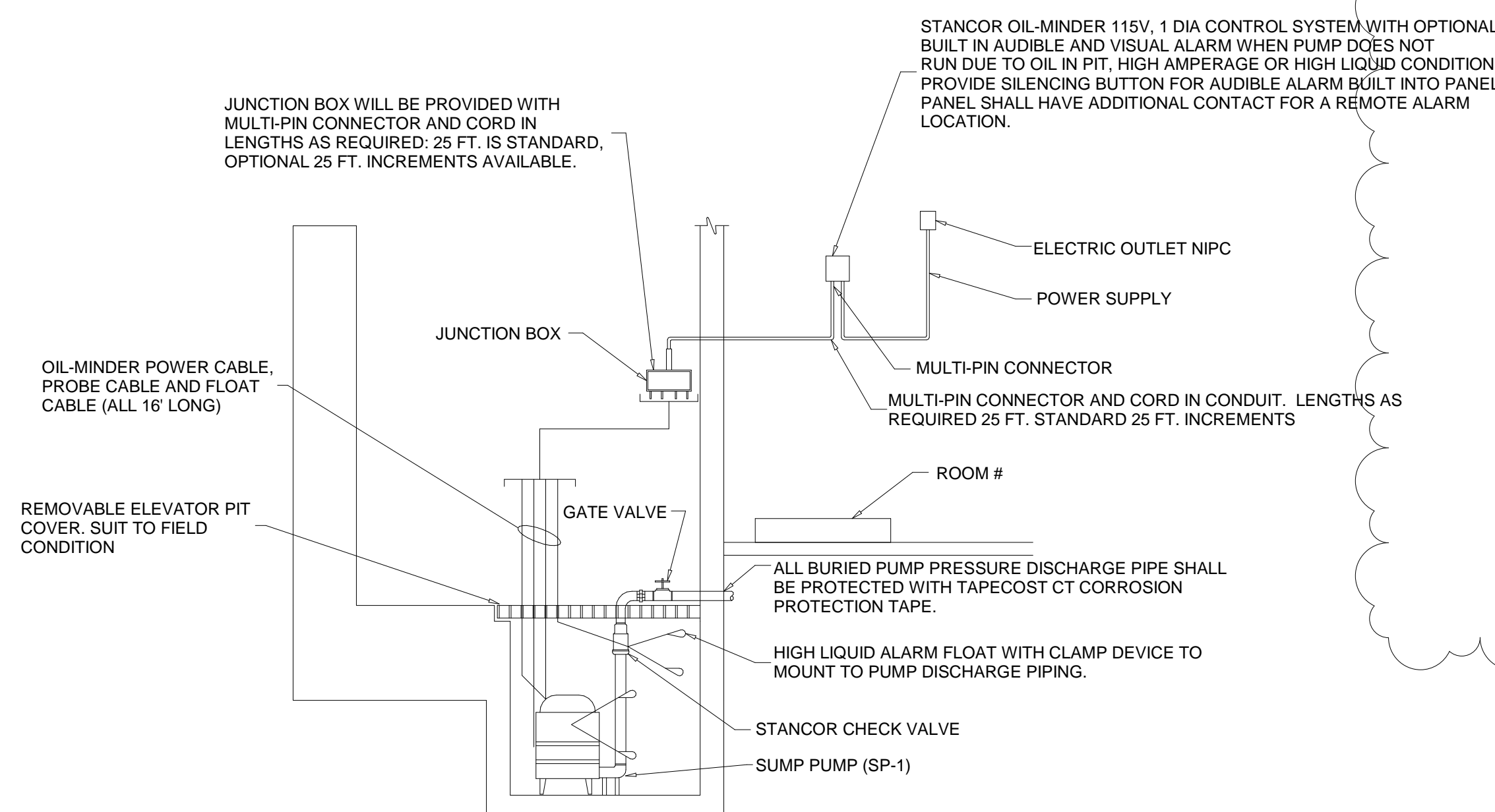
REV. NO.	DESCRIPTION	DATE
1	ADDENDUM 1	01/26/24

### PLUMBING DETAILS

# P-501



**1 DOMESTIC WATER HEATER DETAIL**  
NOT TO SCALE

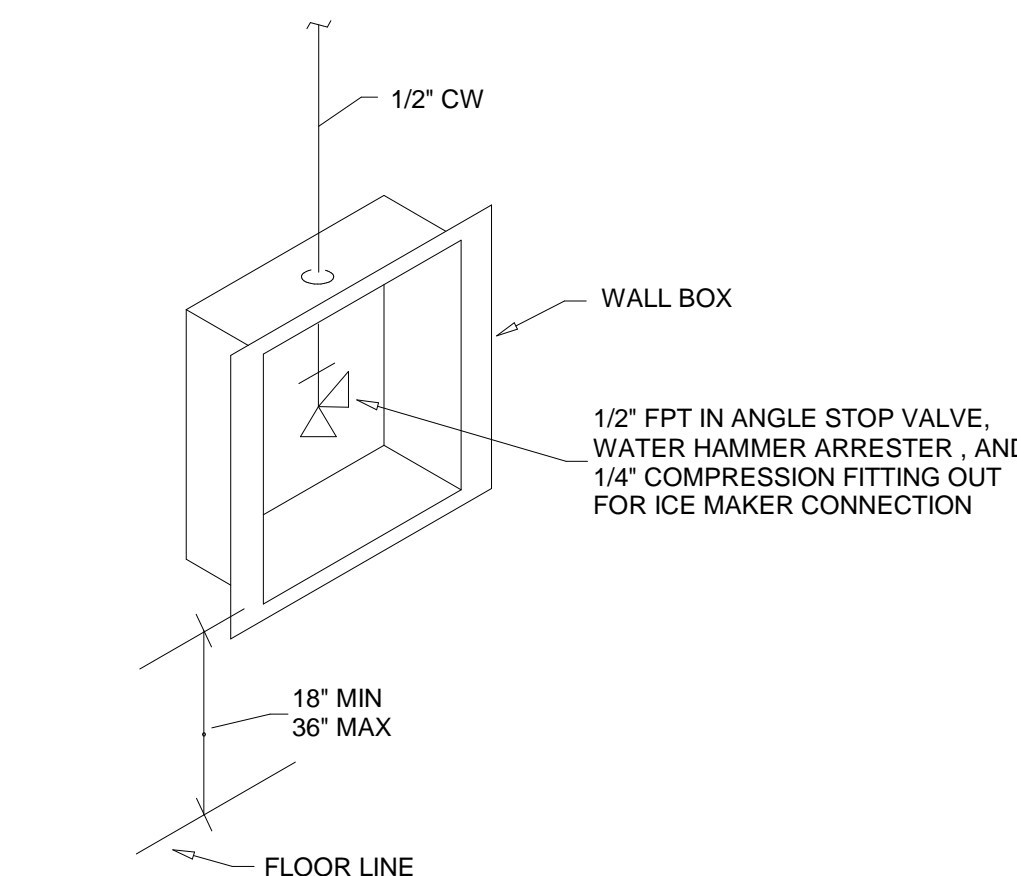


**4 ELEVATOR PIT SUMP PUMP DETAIL**  
NOT TO SCALE

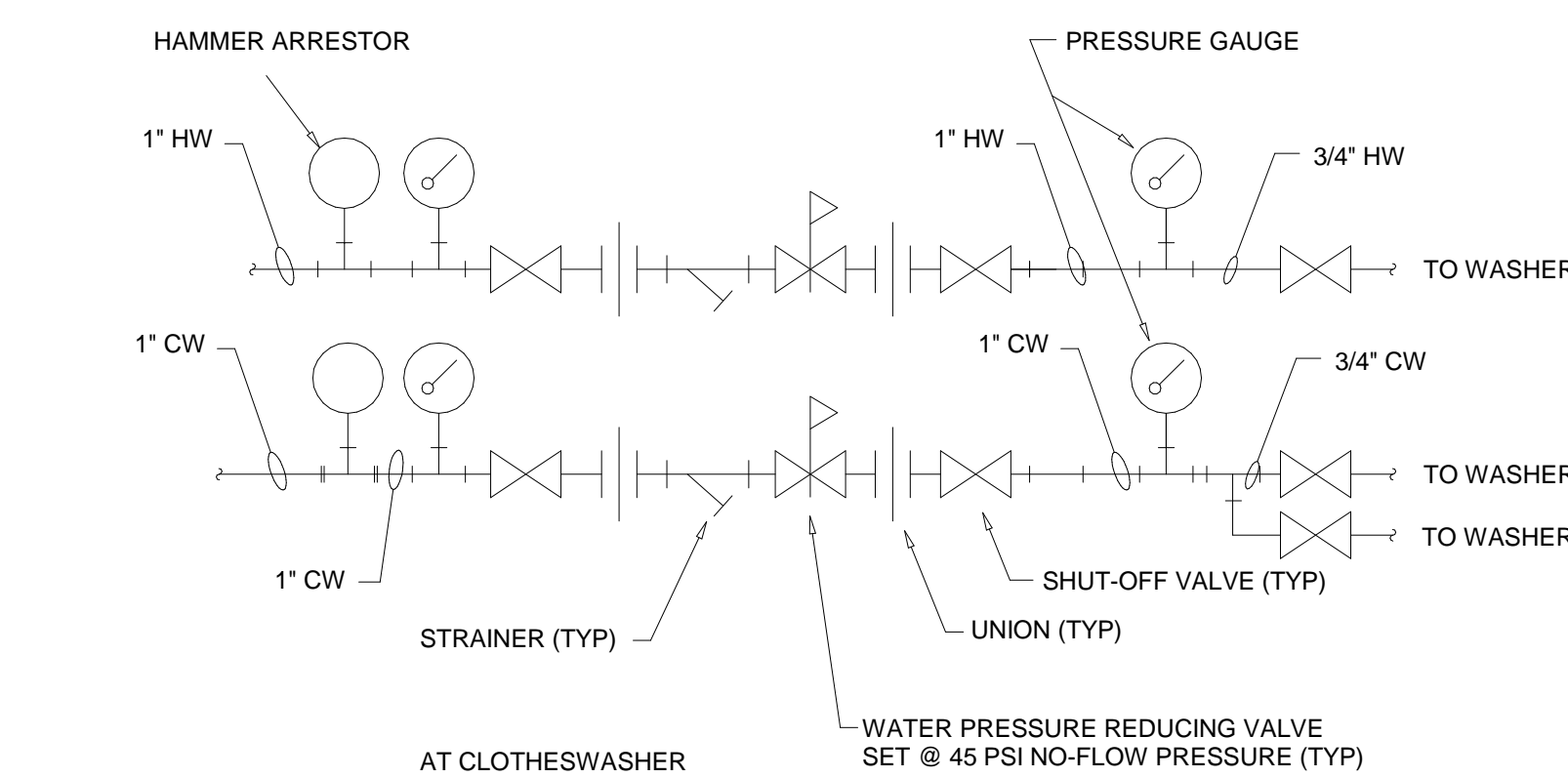


**8 HWR PUMP PIPING DIAGRAM**  
NOT TO SCALE

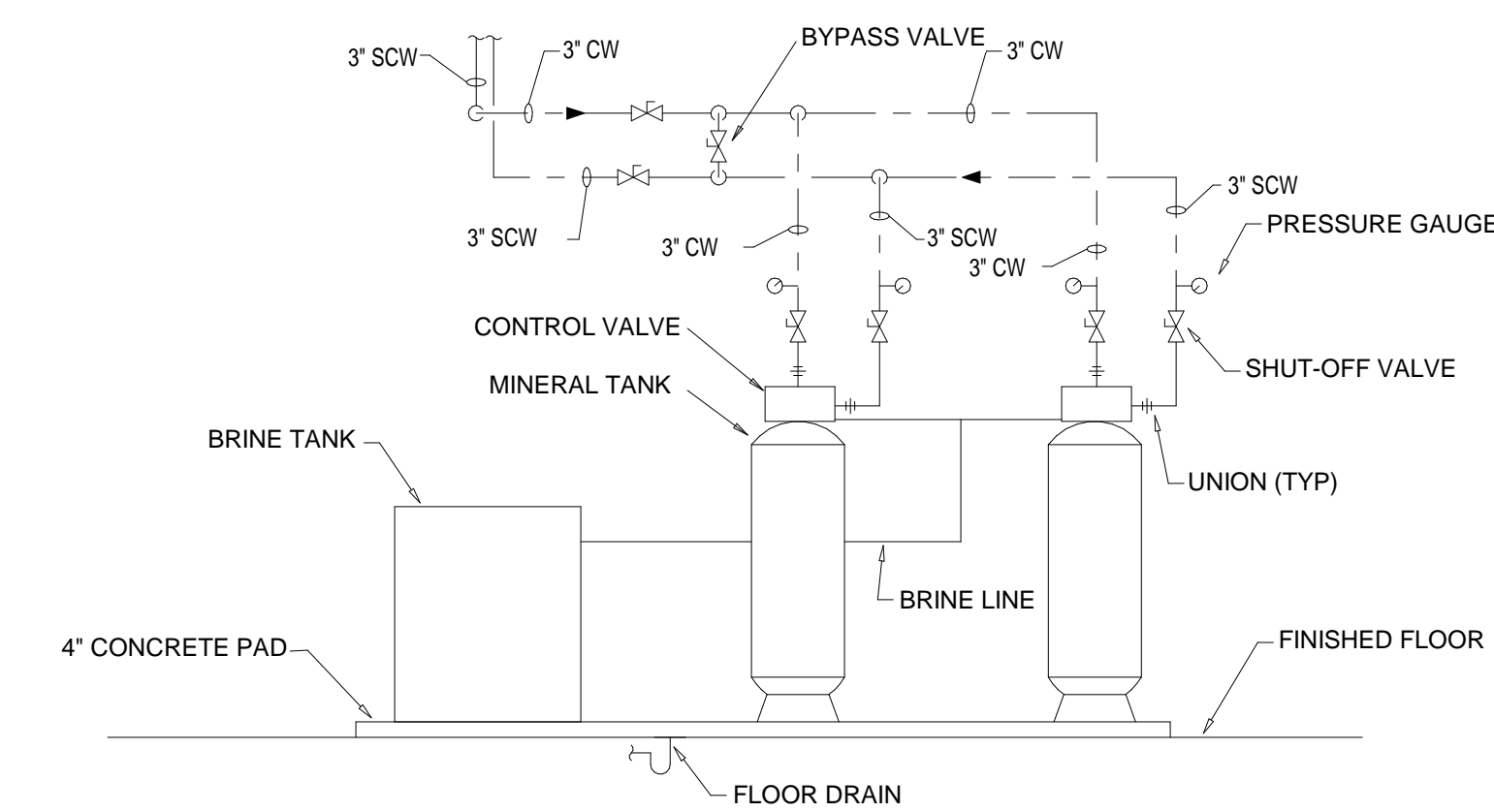
**7 HWR BALANCING STATION DETAIL**  
NOT TO SCALE



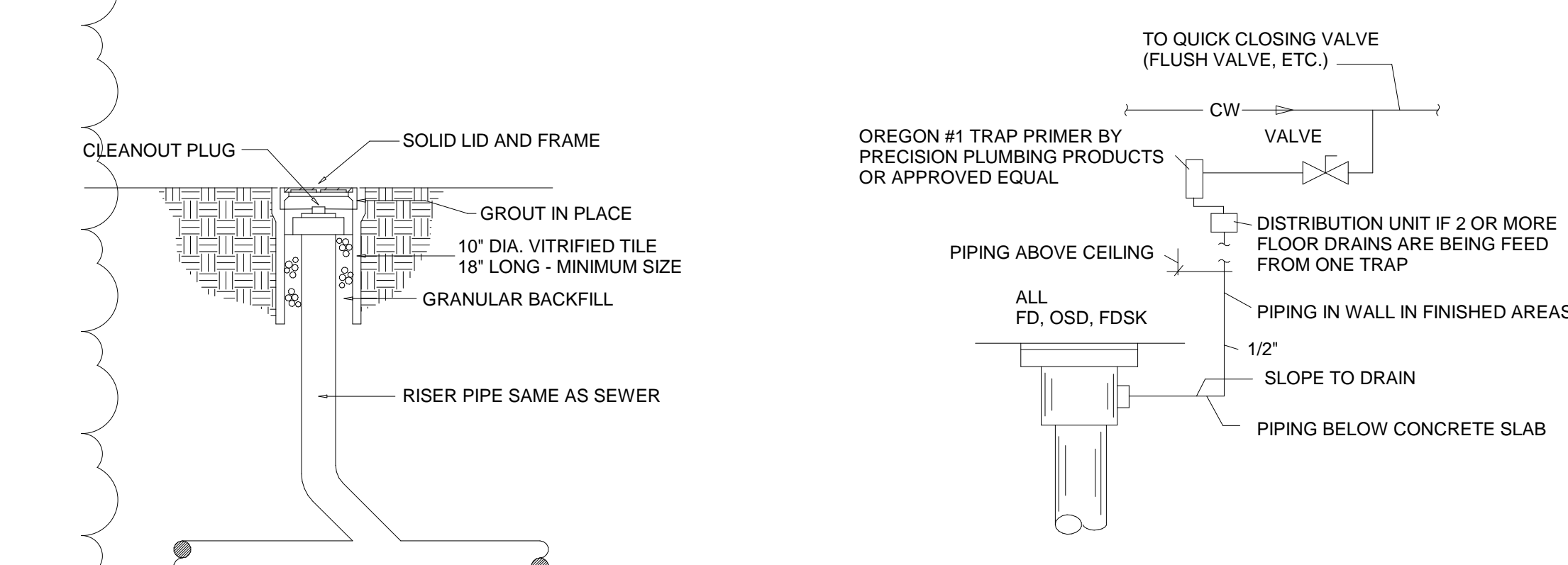
**9 ICE MAKER BOX DETAIL**  
NOT TO SCALE



**13 WATER PRESSURE REDUCING VALVE PIPING DIAGRAM**  
NOT TO SCALE

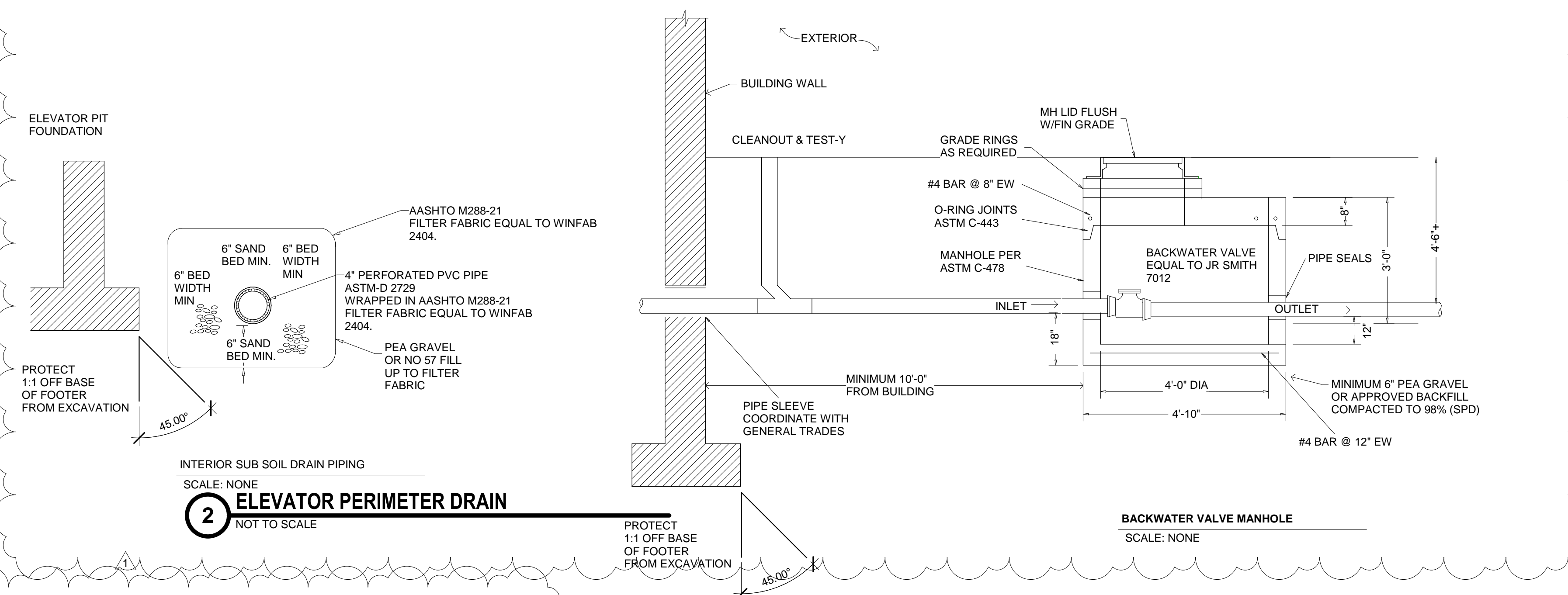


**3 DUPLEX WATER SOFTENER DETAIL**  
NOT TO SCALE

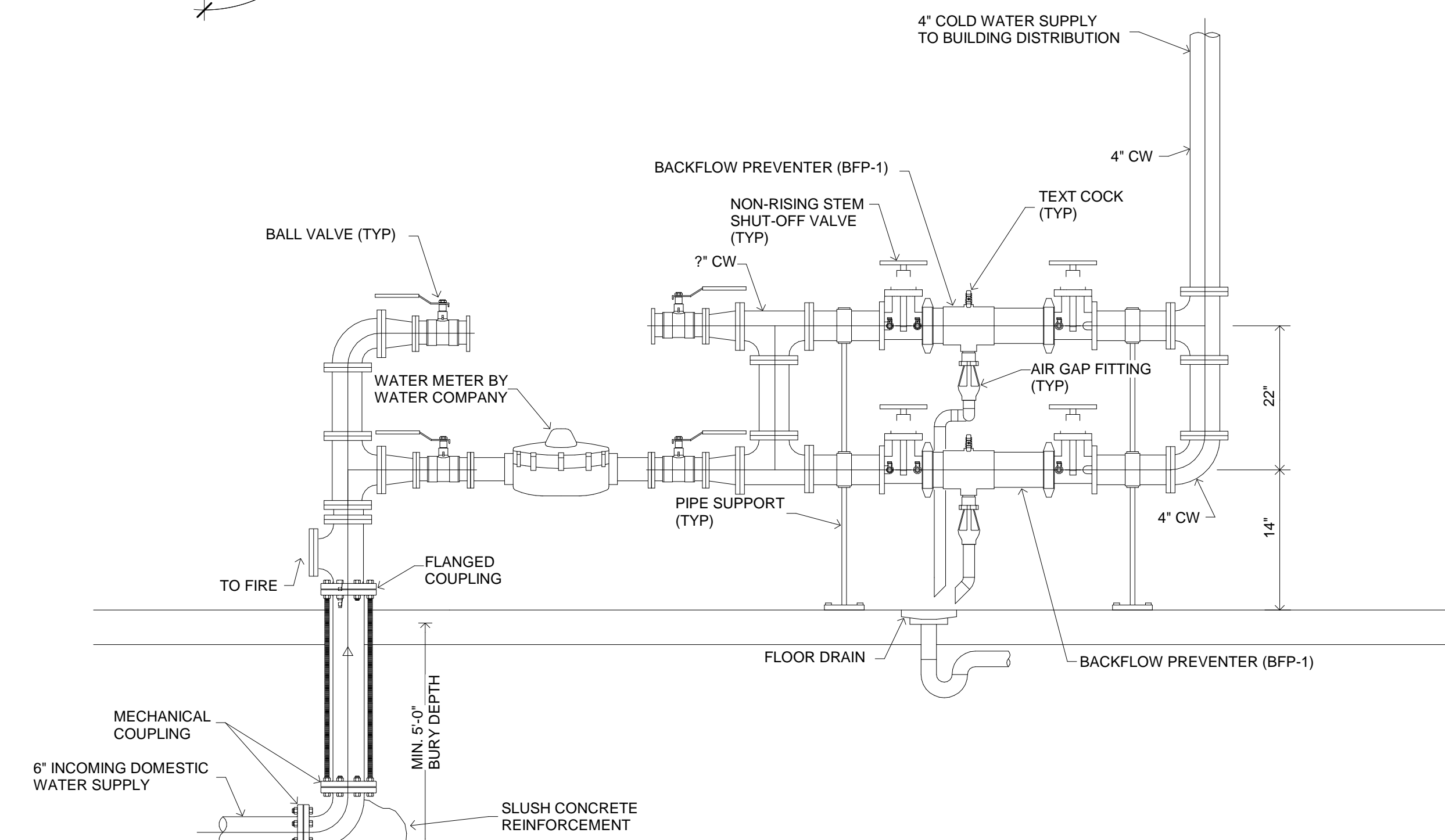


**5 EXTERIOR CLEANOUT DETAIL**  
NOT TO SCALE

**11 TRAP PRIMER DETAIL**  
NOT TO SCALE



**2 ELEVATOR PERIMETER DRAIN**  
NOT TO SCALE



**12 WATER METER & BACKFLOW PREVENTER ASSEMBLY DETAIL**  
NOT TO SCALE



**PENN HIGH  
SCHOOL  
FIELDHOUSE**

12641 McKinley Highway, Mishawaka,  
Indiana 46545

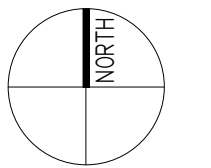
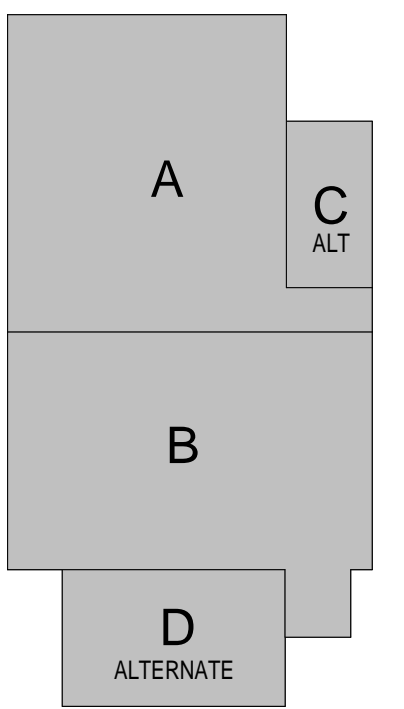
**PENN-HARRIS-MADISON  
SCHOOL CORPORATION**



ARCHITECT

**FANNING  
HOWEY**

317.848.0966 WWW.FHAI.COM  
350 E NEW YORK ST #300 INDIANAPOLIS, IN 46204



## KEY PLAN

## Construction Documents



DRAWN BY: CSS

PROJECT NUMBER: 222130

PROJECT ISSUE DATE: January 10, 2024

[illegible]

## PLUMBING SCHEDULES

# P-601

MARK	DESCRIPTION	LOCATION	MANUFACTURER/MODEL NUMBER	CAPACITY	REMARKS	ELECTRICAL DATA					COMMENTS
						HP	KW	V	AMP	PH	
BFP-2	REDUCED PRESSURE PRINCIPLE BACKFLOW PREVENTER	MECH. ROOM	WATTS MODEL NO. 009 (1")	20 GPM @ 10 PSI MAX. DROP	PIPE AIRGAP DISCHARGE FULL SIZE TO FLOOR DRAIN	-	-	-	-	-	
DWB-1	DUPLEX DOMESTIC WATER BOOSTER PUMP PACKAGE	MECH. ROOM	BELL AND GOSSETT MODEL 15SV DUPLEX 5 HP	140 GPM AT 40 PSI PRESSURE BOOST		(2) SHP		480V		3	SET OUTLET TO 85 PSIG
DWH-1	DOMESTIC GAS WATER HEATER	MECH. ROOM	AERCO AM 250R1	250,000 BTU/HR EA., 285 GPH @ 100 DEG. RISE, 3" FLUE, 3" AIR INTAKE	ROUTE DRAIN LINES FROM HEATER AND STORAGE TANK TO FLOOR DRAIN	1/6	-	120	-	1	
EXT-1	DOMESTIC HOT WATER EXPANSION TANK	MECH. ROOM	AMTROL ST-447C	53 GAL. MAX ACCEPT VOLUME 53 GAL. TOTAL VOLUME	A.S.M.E. RATED - SECTION VIII	-	-	-	-	-	
HWCP-1	HOT WATER RETURN PUMP NO. 1 (140 DEG. F.)	MECH. ROOM	BELL AND GOSSETT MODEL NO. PL36	5 GPM @ 35 T.D.H.	ALL BRONZE CONSTRUCTION	1/6	-	115	1.1	-	
SP-1	ELEVATOR SUMP PUMP	ELEVATOR PIT	STANCOR PUMPS MODEL NO. SE50	50 GPM @ 20 T.D.H.	PROVIDE OIL DETECTION ALARM SYSTEM WITH PUMP	1/2	-	115	8	1	
ST-1	DOMESTIC HOT WATER TANK (REQUIRED ONLY FOR LOCHINVAR EQUAL)	MECH. ROOM	AQ SMITH FACTORY INSULATED HOT WATER STORAGE TANK MODEL TSV-200A	200 GALLONS		-	-	-	-	-	
WS-1	WATER SOFTENER	MECH. ROOM	AQUA SYSTEMS GEN II 3" SERIES MULTI-UNIT MODEL 2000	172 GPM @ 15 PSI DROP, 20 CF MEDIA, 600,000 GRAINS		-	-	-	-	-	

PLUMBING FIXTURE SCHEDULE																		
MARK	FIXTURE						TRIM			ACCESSORIES			CONNECTIONS				COMMENTS	
	ITEM	MFGR	MODEL	MATERIAL	TYPE	COLOR	ITEM	MFGR	MODEL	ITEM	MFG R	MODE L	CW	HW	W	V		
EEW1	EMERGENCY EYE/FACE WASH	BRADLEY	S19214	STAINLESS	WALL MTD.	-	MIXING VALVE	BRADLEY	S192000	-	-	-	1/2"	1/2"	2"	1 1/2"	EXTEND WASTE OVER FLOOR DRAIN.	
EWC1	ELECTRIC WATER COOLER-ADA ACCESSIBLE	ELKAY	LZSTL8WSSK	STAINLESS	A	-	BUBBLER	-	-	BOTTLE FILLER	-	-	1/2"		2"	1 1/2"	PROVIDE STAINLESS STEEL WALL GUARDS, PVC RIM BUMPER, MOP HANGER, HOSE AND HOSE BRACKET	
FSS1	SERVICE SINK	E.L. MUSTEE	15F	STAINLESS	FLOOR MTD.	-	FAUCET	ZURN	Z871H1-X L	DRAIN	-	-	1/2"	1/2"	2"	2"		
FSSK1	MOP SERVICE BASIN	E.L. MUSTEE	63M	TERAZZO	FLOOR MTD.	-	FAUCET	ZURN	Z843M1-X L	-	-	-	3/4"	3/4"	3"	1 1/2"		
HB1	HOSE BIBB	ZURN	Z1341	ROUGH BRONZE	AS NOTED	-	-	-	-	-	-	-	3/4"					
KL1	KITCHEN HAND SINK	AMERICAN STANDARD	0355.012	VIT. CHINA	WALL MTD.	WHITE	FAUCET	MOEN	8210F05	TMV	POW ERS	USG1	1/2"	1/2"	1 1/2"	1 1/2"	PROVIDE TRAP AND SUPPLY WRAP	
LA1	LAVATORY-ADA ACCESSIBLE	AMERICAN STANDARD	0355.012	VIT. CHINA	WALL MTD.	WHITE	FAUCET	MOEN	8210F05	TMV	POW ERS	USG1	1/2"	1/2"	1 1/2"	1 1/2"		
LA2	LAVATORY	AMERICAN STANDARD	0355.012	VIT. CHINA	WALL MTD.	WHITE	FAUCET	MOEN	8210F05	TMV	POW ERS	USG1	1/2"	1/2"	1 1/2"	1 1/2"		
RH1	FREEZE PROOF SANITARY ROOF HYDRANT	WOODFORD	RHY2-1-MS	ROUGH BRONZE	AS NOTED	-	-	-	-	-	-	-	3/4"					
SH1	SHOWER-ADA ACCESSIBLE	-	-	STAINLESS	WALL MTD.	SATIN	SHOWER VALVE	POWERS	450-7100	FD1 FLOOR DRAIN	-	-	3/4"	3/4"	2"	1 1/2"		
SH2	SHOWER	-	-	STAINLESS	WALL MTD.	-	SHOWER VALVE	POWERS	450-7108	FD1 FLOOR DRAIN	-	-	3/4"	3/4"	2"	1 1/2"		
SK1	DOUBLE C.OMP. SINK	ELKAY	LR3319	STAINLESS	COUNTER TOP			ZURN	Z831C1-X L-4F-HS	TMV	POW ERS	LM495						
UR1	URINAL-ADA ACCESSIBLE	AMERICAN STANDARD	6590.001	VIT. CHINA	A	WHITE	FLUSH VALVE	SLOAN	186-0.5	-	-	-	3/4"		2"	1 1/2"	INSTALL FLUSH VALVE TO WIDE SIDE OF STALL	
UR2	URINAL	AMERICAN STANDARD	6590.001	VIT. CHINA	B	WHITE	FLUSH VALVE	SLOAN	186-0.5	-	-	-	3/4"		2"	1 1/2"		
WB-1	WATER SUPPLY BOX	GUY GRAY	MIB1HAAB	STAINLESS	WALL MTD.	-	-	-	-	-	-	-	1/2"					
WC1	WATER CLOSET-ADA ACCESSIBLE	AMERICAN STANDARD	2257.101	VIT. CHINA	A	WHITE	FLUSH VALVE	SLOAN	111-1.28	SEAT	BEMI S	1655S SCT	1 1/2"		4"	2"	<varies>	
WC2	WATER CLOSET	AMERICAN STANDARD	2257.101	VIT. CHINA	B	WHITE	FLUSH VALVE	SLOAN	111-1.28	SEAT	BEMI S	1655S SCT	1 1/2"		4"	2"		
WH1	NON-FREEZE WALL HYDRANT	JR SMITH	5519	ROUGH BRONZE	AS NOTED	-	-	-	-	-	-	-	3/4"					
WH2	WALL HYDRANT INTERIOR THIN WALL	JR SMITH	5519-SAP	ROUGH BRONZE	AS NOTED	-	-	-	-	-	-	-	3/4"	0"				



PENN HIGH SCHOOL FIELDHOUSE

12641 McKinley Highway, Mishawaka, Indiana 46545

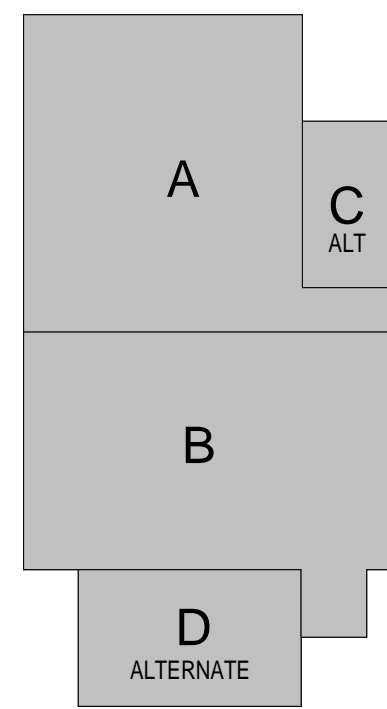
PENN-HARRIS-MADISON SCHOOL CORPORATION



ARCHITECT



317.848.0966 WWW.FHAI.COM  
350 E NEW YORK ST #300 INDIANAPOLIS, IN 46204



KEY PLAN

Construction Documents



DRAWN BY: CSS

PROJECT NUMBER: 222130

PROJECT ISSUE DATE: January 10, 2024

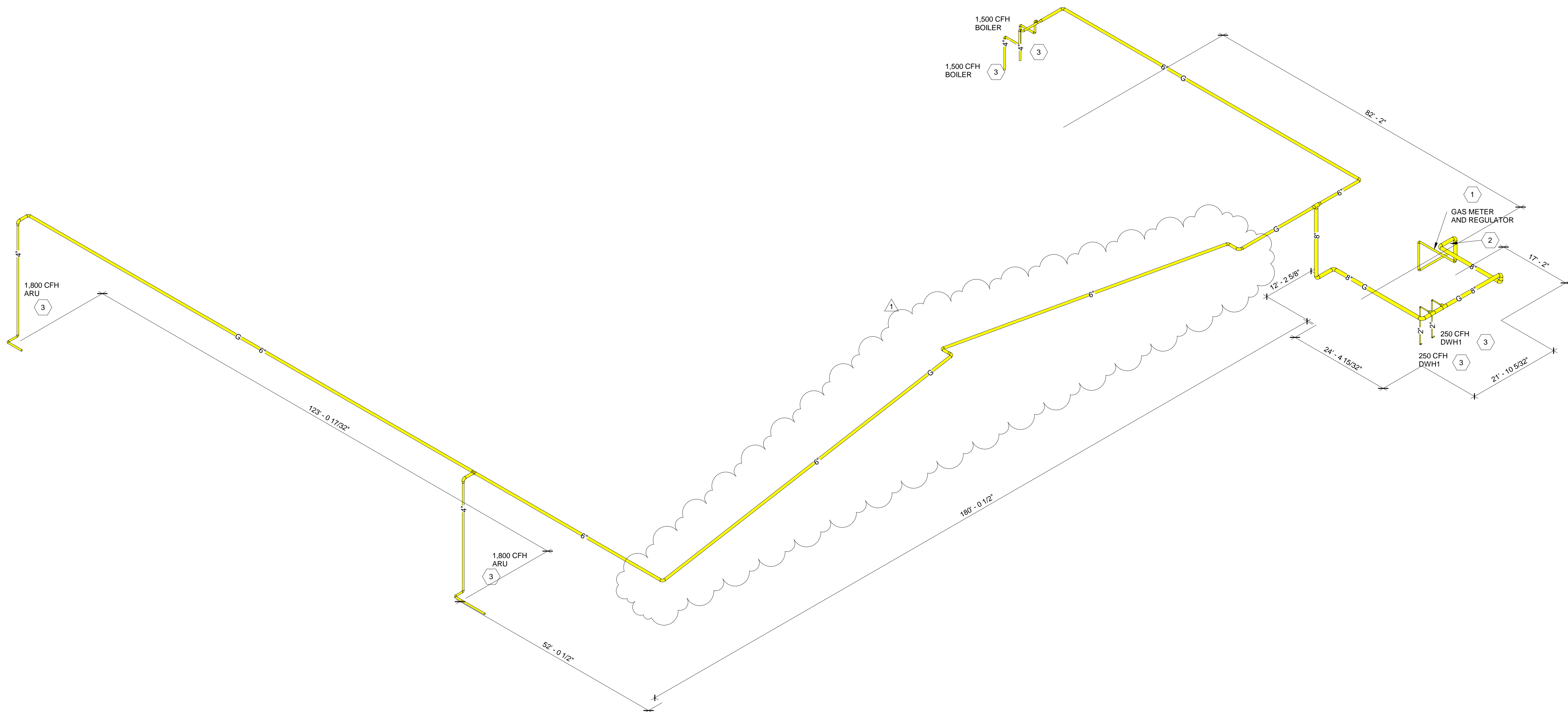
REV. NO.	DESCRIPTION	DATE
1	ADDENDUM 1	01/26/24

NATURAL GAS DIAGRAM

P-702

CODED NOTES

- METER AND REGULATOR SETTING, COORDINATE AND PROVIDE CONCRETE PAD AND BOLLARDS PER NIPSCO REQUIREMENTS.
- PROVIDE SEALED AND SLEEVED BUILDING WALL PENETRATION.
- PROVIDE SUPPLY DROP, ISOLATION VALVE, DIRT LEG PER ITEM OF EQUIPMENT, PROVIDE APPLIANCE REGULATOR AS REQUIRED. COORDINATE REQUIREMENTS WITH SUCCESSFUL BID EQUIPMENT.



1 NATURAL GAS DIAGRAM  
N.T.S.

NATURAL GAS DESIGN NOTES

NATURAL GAS SYSTEM DESIGN INCLUDES: 3,600 CFH CONNECTED GAS DEMAND FOR FIELD HOUSE AIR ROTATION UNITS, 3,000 CFH FOR HEATING HOT WATER BOILERS AND 500 CFH FOR DOMESTIC WATER HEATING. SYSTEM PRESSURE NOMINALLY 7" W.C. WITH PIPING SIZING DESIGNED TO DELIVER MINIMUM 6.5" W.C. AT EQUIPMENT.



PENN HIGH SCHOOL FIELDHOUSE

12641 McKinley Highway, Mishawaka, Indiana 46545

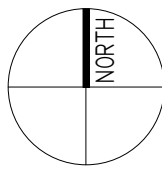
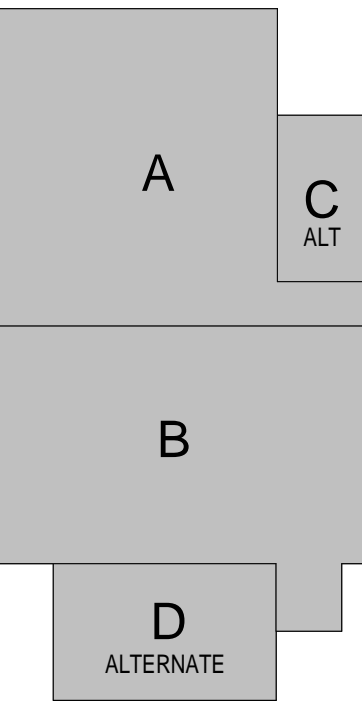
PENN-HARRIS-MADISON SCHOOL CORPORATION



ARCHITECT



317.848.0966 WWW.FHAI.COM  
350 E NEW YORK ST #300 INDIANAPOLIS, IN 46204



KEY PLAN

Construction Documents

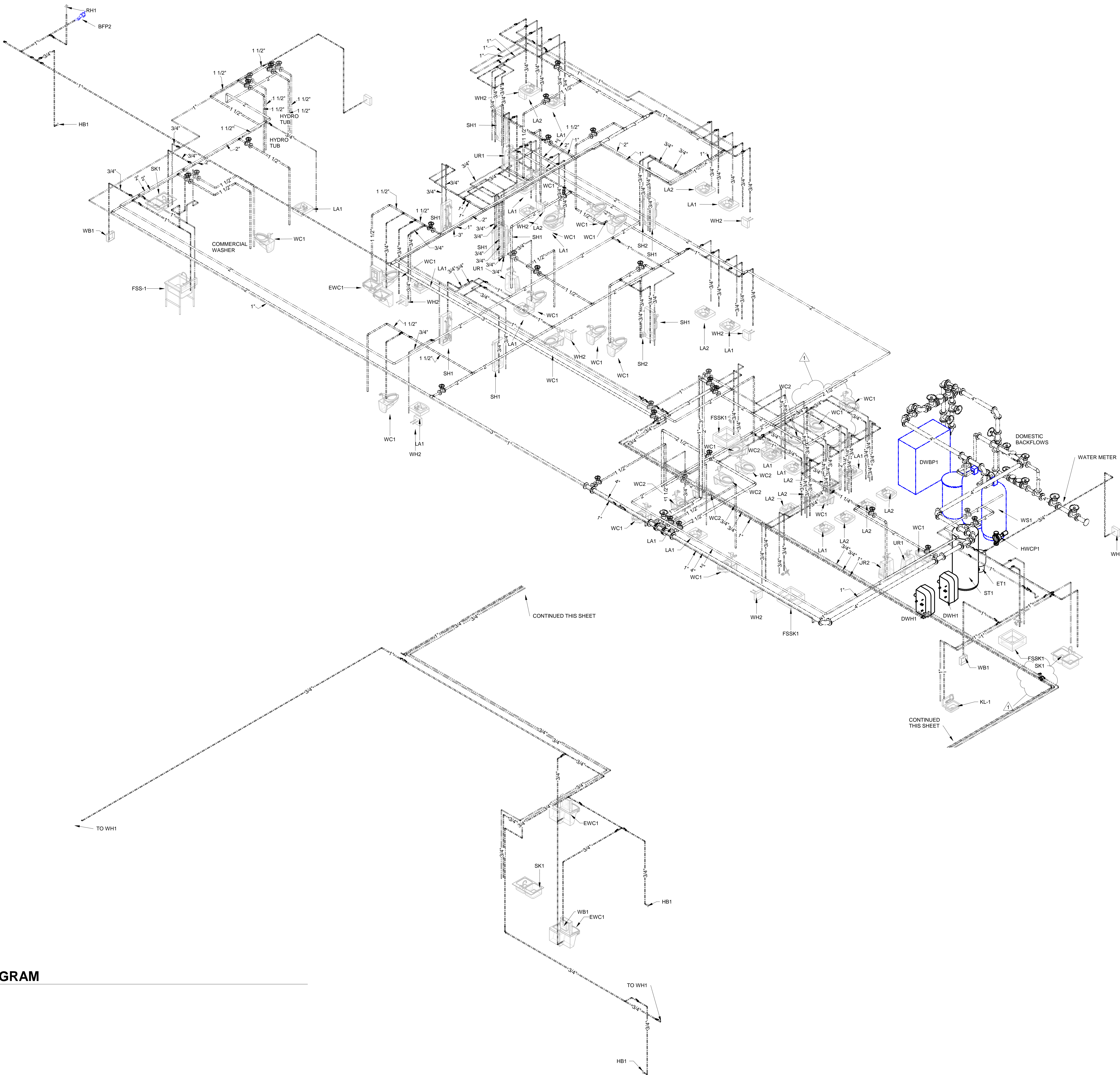


PROJECT NUMBER: 222130  
PROJECT ISSUE DATE: January 10, 2024

REV. NO.	DESCRIPTION	DATE
1	ADDENDUM 1	01/26/24

WATER DIAGRAM

P-703



WATER DIAGRAM