



Lillian Schmitt Elementary – Bid Package #1

Addendum #2

February 16, 2024

This addendum is hereby made a part of the Drawings and Specifications on the subject work as though originally included therein. The following amendments, additions, and/or corrections shall govern this package.

Updated Drawings:

- 1) See attached notes/addenda produced by R.E. Dimond, Engineer, regarding the drawings pertaining to BP#1 – Early Equipment (Pre-Purchase).

ADDENDUM No. 02

Bartholomew Consolidated School Corporation
Equipment Pre-Purchase Package
L.C. Schmitt Elementary School

2675 California St.
Columbus, IN 47201

February 16, 2024

This Addendum issued prior to bidding, alters, amends, corrects or clarifies the Proposal Documents to the extent stated herein and does hereby become a part of the Proposal Documents, and will become a part of the Contract Documents of the successful bidder.

MECHANICAL

A. DRAWINGS

1. M-101 – OVERALL FLOOR PLAN - MECHANICAL
 - a. This drawing is to be reissued in its entirety.
 - b. 8" Pipe chase has been removed from all 'B' and 'C' type VUVs.

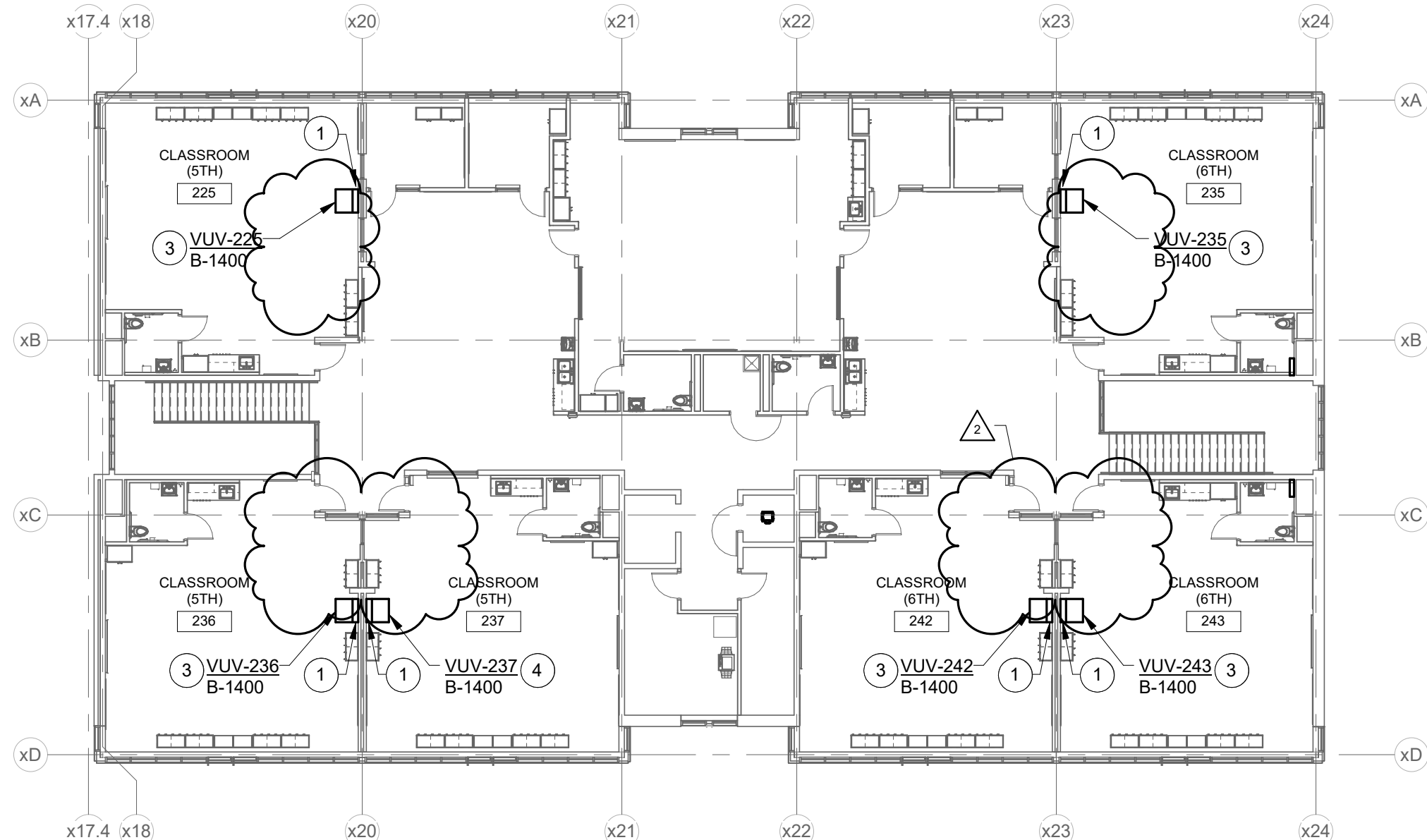
END OF ADDENDUM

RENOVATION LEGEND:

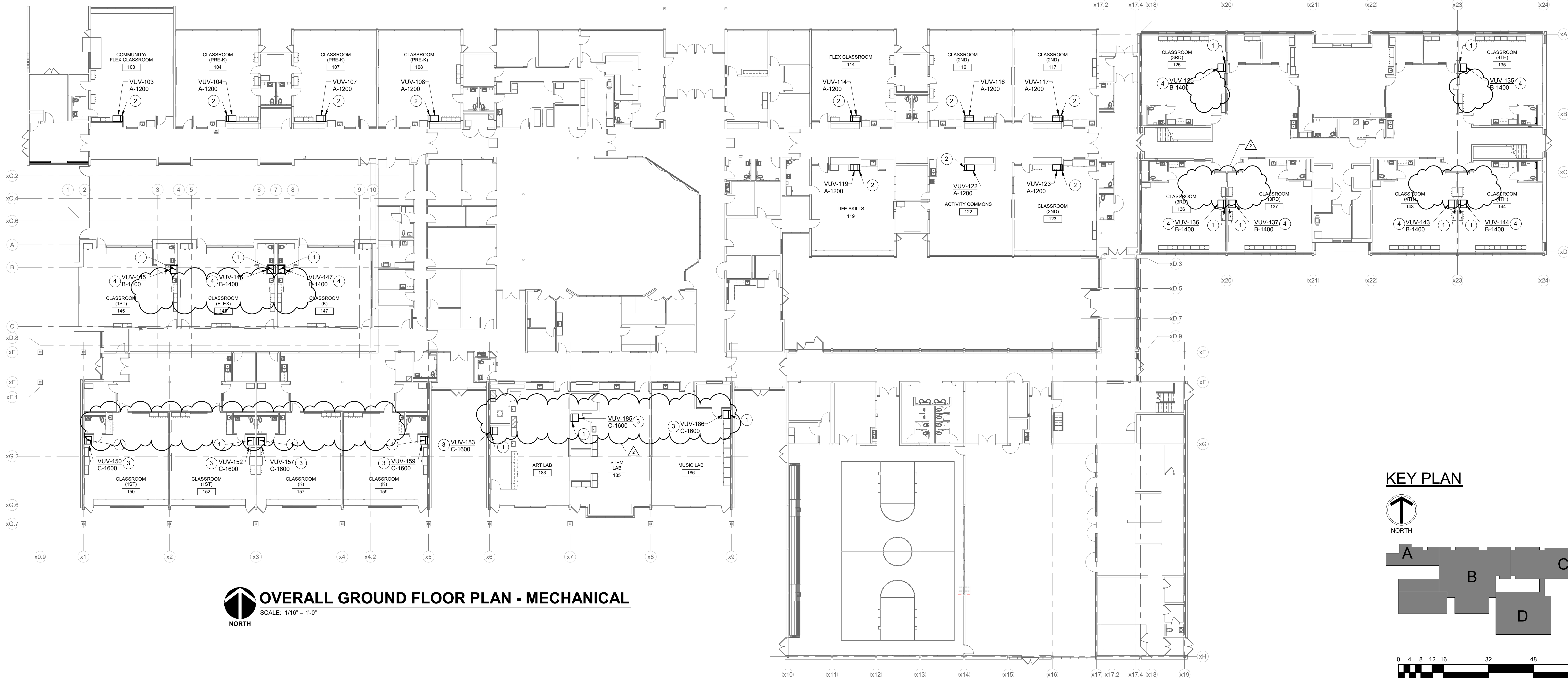
- WORK TO BE INSTALLED
WORK TO REMAIN

GENERAL NOTES - AIR DISTRIBUTION:

1. SEE SHEET M-415 FOR VUV ARRANGEMENT DETAILS.
- # PLAN NOTES:
1. 8" INSULATED OUTDOOR AIR PLENUM BY MFG.
2. 8" PIPE CHASE BY MFG.
3. VUV TO HAVE 42" TALL 5-SIDE INSULATED SUPPLY PLENUM EXTENSION.
4. VUV TO HAVE 38" TALL 5-SIDE INSULATED SUPPLY PLENUM EXTENSION.



UNIT C - SECOND FLOOR PLAN - MECHANICAL
SCALE: 1/16" = 1'-0"



OVERALL GROUND FLOOR PLAN - MECHANICAL
SCALE: 1/16" = 1'-0"

KEY PLAN

