

## **ADDENDUM # 4**

### **Athletic Facilities**

New Castle Community School Corporation

Loftus Engineering, Inc.  
LEI Project No. 2023-039

April 16, 2024

The following changes and clarifications shall be incorporated into the Contract Documents for the above-referenced project.

### **CONTRACTOR QUESTIONS**

1. Question: On sheet E-601 electrical one line diagram shows a 200amp feed on the primary side of T 1. Is this your intent?  
Answer: Yes, that is the intent to allow for potentially large inrush currents.
2. Question: On sheet ES101 notes 5-8 state the poles are furnished by owner but installed by contractor. What is the responsibility (materials and labor) of the owner provided lighting pole supplier and what is the responsibility (materials and labor) of the electrical contractor?  
Answer: Under Alternate Bid #1, there will be a separate contract to provide new light poles and associated controls, conduit, conductors and grounding to serve the practice field. Under Alternate Bid #1, this Contractor is responsible for furnishing and installing underground conduit from the new athletic building to the location of the first new practice field pole only. Refer to revised Drawing ES101 being reissued with this addendum.
3. Question: Does the owner have an preferred datacom vendor and if so, who is it?  
Answer: New Era Technology, 3209 Union Pike, Richmond, IN 47374.
4. Question: On sheet E-801 general note 7 shows a cash allowance and states to go to section 265100 paragraph 1.7. That section talks about warranty. Please advise.  
Answer: Cash allowances for light fixtures is not applicable to this project. Delete General Note #7 under "Luminaire (Light Fixture) Schedule" on Sheet E-801.

### **SPECIFICATIONS**

1. SECTION 26 33 23 – SMALL INVERTER SYSTEMS:
  - a. Under Paragraph 2.1 B.1., change DualLite model number to "LG" from "LSN."
2. SECTION 27 51 23 – SCHOOL INTERCOMMUNICATIONS SYSTEM:
  - a. Add Paragraph 2.13 and subparagraphs to read as follows:



2.13 RECESSED HORN TYPE LOUDSPEAKERS (Added by Addendum 03)

- A. Loudspeaker Construction: 4-1/4" square, die-cast, gasketed and vandal resistant enclosure with weather resistant louvered loudspeaker driver.
- B. Mounting: Recessed 4" square by 2" deep standard electrical box.
- C. Minimum Axial Sensitivity: 90 dB at one meter, with 1-W input.
- D. Frequency Response: 600 Hz to 5.5 kHz (+/- 5dB).
- E. Power Handling: Minimum 15 Watts.
- F. Dispersion: 190-degrees by 190-degrees at -6dB.
- G. Line Transformer: Primary selectable between 25 V with taps for 1/4, 1/2, 1, 2, 4, 8 and 15 Watts at 25 V. Insertion loss not greater than 1.5 dB with frequency response of 600 Hz to 5.5 kHz.
- H. Basis of Design: Atlas Model VTF-22UC.

**DRAWINGS**

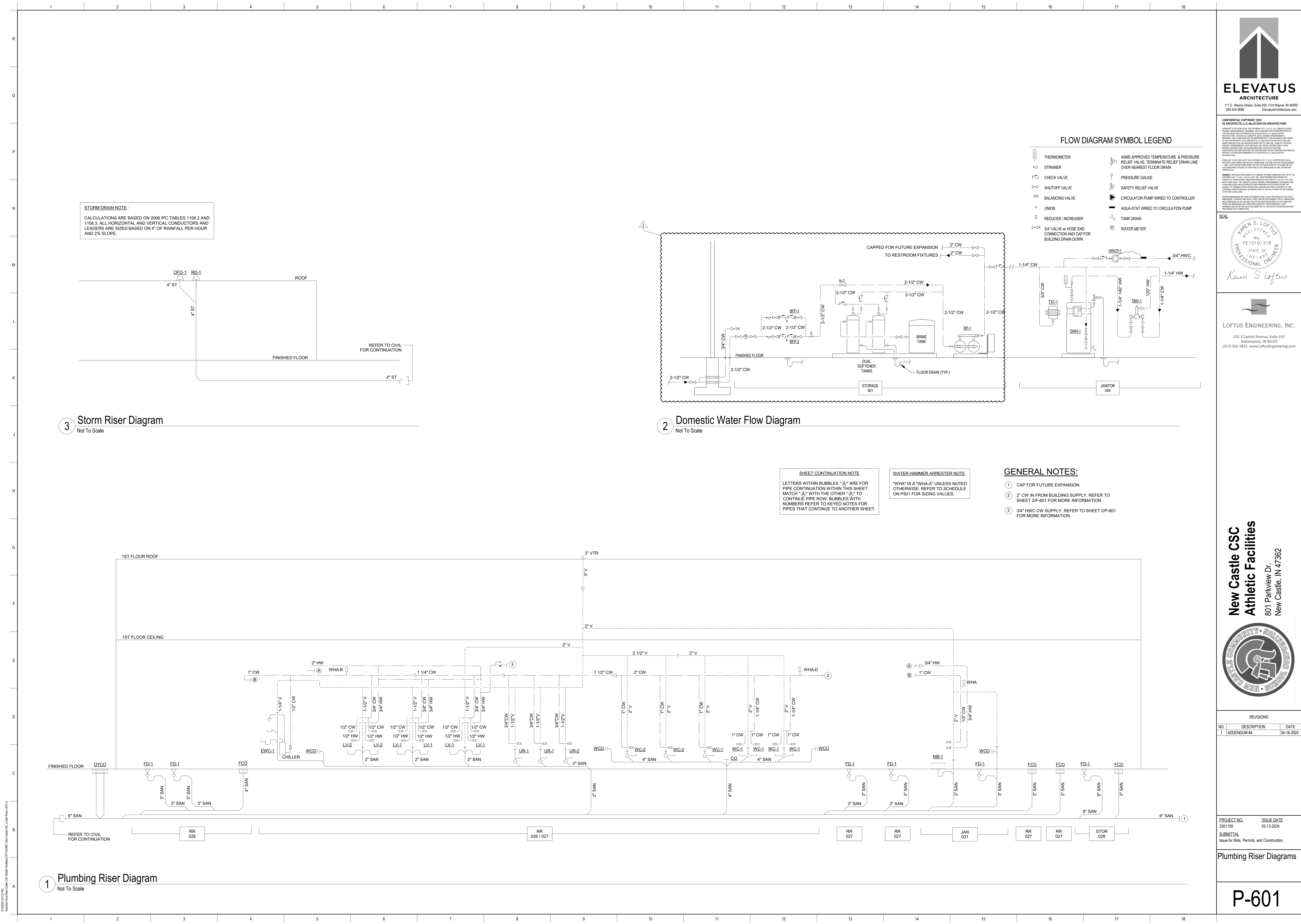
- 3. P-601 – PLUMBING RISER DIAGRAMS:
  - a. Revise the DOMESTIC WATER FLOW DIAGRAM to update domestic water pipe sizes, as indicated on the attached drawing.
- 4. P-603 – PLUMBING SCHEDULES:
  - a. Revise BACKFLOW PREVENTER SCHEDULE to add BFP-2.
- 5. ES101 – Electrical Site Plan
  - a. Revise Plan Notes to reflect revised scope of work under Alternate Bid #1.
  - b. Add Plan Notes #15 and #16 to reflect removal scope of work under Alternate Bid #2.
- 6. E-801 – Light Fixture Schedule:
  - a. On the "Luminaire (Light Fixture) Schedule", delete General Note #7.

**ATTACHMENTS**

P-601 – PLUMBING RISER DIAGRAMS:  
P-603 – PLUMBING SCHEDULES:  
ES101 – ELECTRICAL SITE PLAN

**END – ADDENDUM #4**







BACKFLOW PREVENTER SCHEDULE							
TAG	SERVICE	TYPE	SIZE	PSI DROP	STRAINER	MFG	MODEL
BFP-1	DOMESTIC WATER	RPZA	2-1/2	13	YES	WATTS	LF909
BFP-2	DOMESTIC WATER	RPZA	2-1/2	13	YES	WATTS	LF909

DOMESTIC WATER SOFTENER SYSTEM SCHEDULE										
TAG	LOCATION	INLET CONNECTION	FLOW (GPM) @ 15 PSI DROP	FLOW (GPM) @ 25 PSI DROP	ELECTRICAL DATA				MFG.	MODEL
					VOLTS	PH	HZ	AMPS		
DWS-1	MECHANICAL 114	3"	98	126	24	1	60	-	AQUA SYSTEMS	GEN II 3" SERIES 1000
NOTES:										
1. DUAL MEDIA TANKS, EACH: 24" x 72".										
2. BRINE TANK, 24" x 50". 250,000 GRAINS CAPACITY.										
3. 10.0 CU. FT. RESIN TANK.										
4. WATER METER-CONTROLLED, ON-DEMAND REGENERATION WITH 13 GPM BACKWASH.										

TAG	SERVICE	FLOW CAPACITY (GPM)		PRESSURE DROP AT MAX FLOW (PSI)	CONNECTION SIZES			MFG.	MODEL	NOTES
		MAX	MIN		HW INLET SIZE (IN)	CW INLET SIZE (IN)	TEMPERED OUTLET (IN)			
THW-1	DOMESTIC HOT WATER	36	2	24	3/4	3/4	1	LAWLER	801	1, 2
NOTES:										
1. PROVIDE THERMOMETER.										
2. PROVIDE SHUTOFF VALVES.										

JUMING FIXTURE JUGH-IN SCHEDULE					WATER HAMMER ARRESTER SCHEDULE					
ROUGH-IN CONNECTIONS					TYPE	I.P.S.	FIXTURE UNIT RATING	SILOX CHIEF	WATTS	ZURN
	HW	OW	WASTE	VENT						
(C) E)	-	1/2"	3"	2"	WHA-A	3/4"	1-11	652-A	15M2-A	100
	-	1"	3"	2"	WHA-B	1"	12-32	653-B	15M2-B	200
	-	3/4"	2"	1-1/2"	WHA-C	1"	33-60	654-C	15M2-C	300
	1/2"	1/2"	1-1/2"	1-1/2"	WHA-D	1"	61-113	655-D	15M2-D	400
	1/2"	1/2"	1-1/2"	1-1/2"	WHA-E	1"	114-154	656-E	15M2-E	500
	3/4"	3/4"	3"	1-1/2"	WHA-F	1"	155-330	657-F	15M2-F	600
SH-IN	1/2"	1/2"	2"	1-1/2"	<b>NOTE:</b> 1. PROVIDE SHUT-OFF VALVE WITH WATER HAMMER ARRESTER. 2. P.D.I. CERTIFIED.					
	1/2"	1/2"	2"	1-1/2"						

PLUMBING FIXTURE ROUGH-IN SCHEDULE				
DESCRIPTION	ROUGH-IN CONNECTIONS			
	HW	CW	WASTE	VENT
WATER CLOSET (TANK)	-	1/2"	3"	2"
WATER CLOSET (VALVE)	-	1"	3"	2"
URINAL	-	3/4"	2"	1-1/2"
LAVATORY	1/2"	1/2"	1-1/2"	1-1/2"
SINK	1/2"	1/2"	1-1/2"	1-1/2"
MOP BASIN	3/4"	3/4"	3"	1-1/2"
BATHTUB/SHOWER	1/2"	1/2"	3"	1-1/2"
CLOTHES WASHER ROUGH-IN	1/2"	1/2"	2"	1-1/2"
ELECTRIC WATER COOLER	-	1/2"	1-1/2"	1-1/2"
WALL HYDRANT/HOSE BIBB	-	3/4"	-	-
ICE MAKER ROUGH-IN	-	3/8"	-	-

WATER HAMMER ARRESTER SCHEDULE					
TYPE	I.P.S.	FIXTURE UNIT RATING	SIoux CHIEF	WATTS	ZURN
WAH-A	3/4"	1-11	652-A	15M2-A	100
WAH-B	1"	12-32	653-B	15M2-B	200
WAH-C	1"	33-60	654-C	15M2-C	300
WAH-D	1"	61-113	655-D	15M2-D	400
WAH-E	1"	114-154	656-E	15M2-E	500
WAH-F	1"	114-330	657-F	15M2-F	600

**NOTE:**

1. PROVIDE SHUT-OFF VALVE WITH WATER HAMMER ARRESTER.
2. P.D.I. CERTIFIED.

[illegible]

**New Castle CSC  
Athletic Facilities**

801 Parkview Dr.  
New Castle, IN 47362

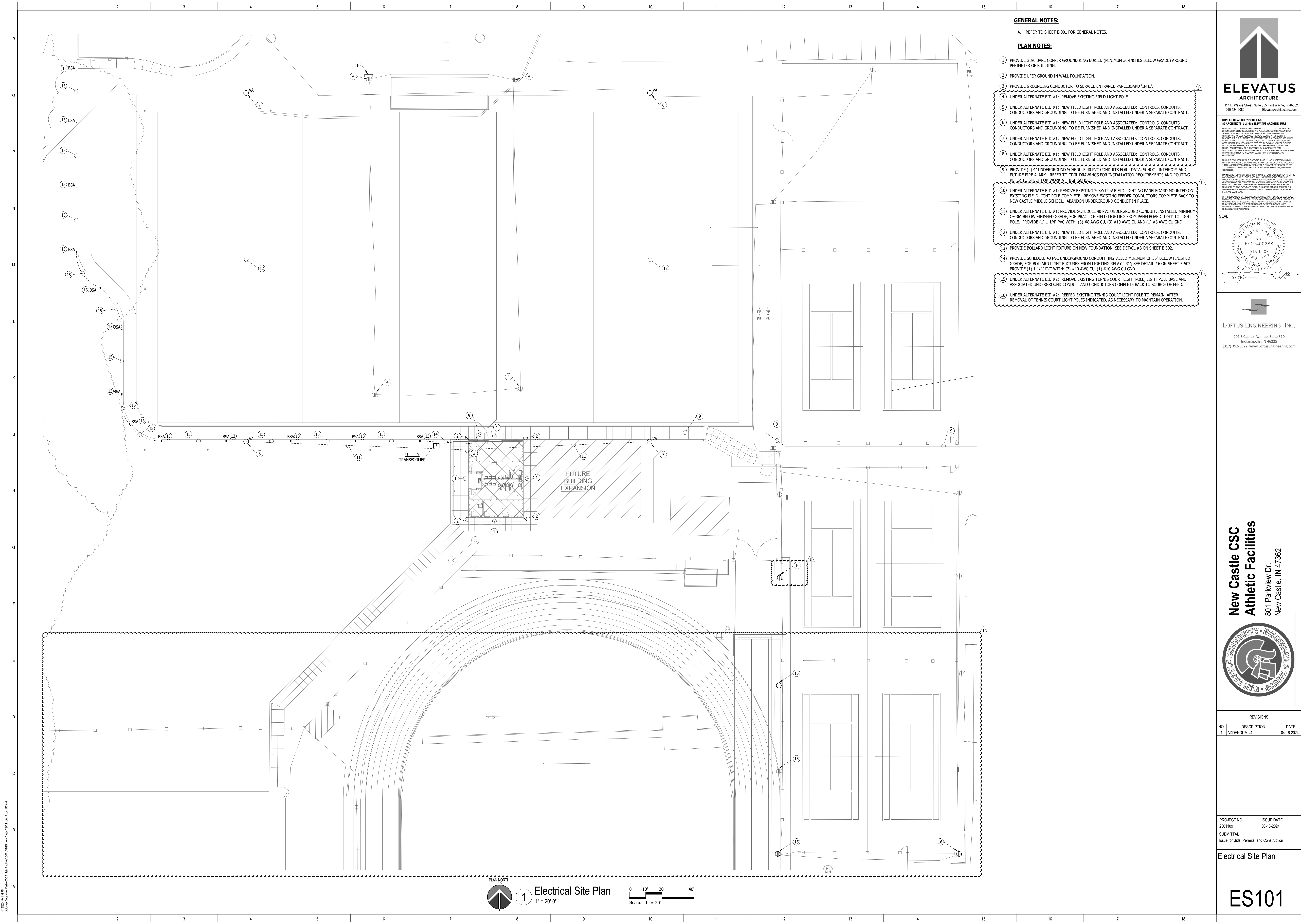
REVISIONS		
D.	DESCRIPTION	DATE
	ADDENDUM #4	04-16-2024

<u>PROJECT NO.</u>	<u>ISSUE DATE</u>
801109	03-13-2024
<u>UBMITTAL</u>	
Issue for Bids, Permits, and Construction	

## Climbing Schedules

# P-603





**GENERAL NOTES:**

A. REFER TO SHEET E-001 FOR GENERAL NOTES.

**PLAN NOTES:**

1. PROVIDE #3/0 BARE COPPER GROUND RING BURIED (MINIMUM 36-INCHES BELOW GRADE) AROUND PERIMETER OF BUILDING.
2. PROVIDE UFER GROUND IN WALL FOUNDATION.
3. PROVIDE GROUNDING CONDUCTOR TO SERVICE ENTRANCE PANELBOARD '1PH1'.
4. UNDER ALTERNATE BID #1: REMOVE EXISTING FIELD LIGHT POLE.
5. UNDER ALTERNATE BID #1: NEW FIELD LIGHT POLE AND ASSOCIATED: CONTROLS, CONDUITS, CONDUCTORS AND GROUNDING TO BE FURNISHED AND INSTALLED UNDER A SEPARATE CONTRACT.
6. UNDER ALTERNATE BID #1: NEW FIELD LIGHT POLE AND ASSOCIATED: CONTROLS, CONDUITS, CONDUCTORS AND GROUNDING TO BE FURNISHED AND INSTALLED UNDER A SEPARATE CONTRACT.
7. UNDER ALTERNATE BID #1: NEW FIELD LIGHT POLE AND ASSOCIATED: CONTROLS, CONDUITS, CONDUCTORS AND GROUNDING TO BE FURNISHED AND INSTALLED UNDER A SEPARATE CONTRACT.
8. UNDER ALTERNATE BID #1: NEW FIELD LIGHT POLE AND ASSOCIATED: CONTROLS, CONDUITS, CONDUCTORS AND GROUNDING TO BE FURNISHED AND INSTALLED UNDER A SEPARATE CONTRACT.
9. PROVIDE (2) 4" UNDERGROUND SCHEDULE 40 PVC CONDUITS FOR: DATA, SCHOOL INTERCOM AND FUTURE FIRE ALARM. REFER TO CIVIL DRAWINGS FOR INSTALLATION REQUIREMENTS AND ROUTING. REFER TO SHEET FOR WORK AT HIGH SCHOOL.
10. UNDER ALTERNATE BID #1: REMOVE EXISTING 208Y/120V FIELD LIGHTING PANELBOARD MOUNTED ON EXISTING FIELD LIGHT POLE COMPLETE. REMOVE EXISTING FEEDER CONDUCTORS COMPLETE BACK TO NEW CASTLE MIDDLE SCHOOL. ABANDON UNDERGROUND CONDUIT IN PLACE.
11. UNDER ALTERNATE BID #1: PROVIDE SCHEDULE 40 PVC UNDERGROUND CONDUIT, INSTALLED MINIMUM OF 36" BELOW FINISHED GRADE, FOR PRACTICE FIELD LIGHTING FROM PANELBOARD '1PH1' TO LIGHT POLE. PROVIDE (1) 1-1/4" PVC WITH: (3) #8 AWG CU, (3) #10 AWG CU AND (1) #8 AWG CU GND.
12. UNDER ALTERNATE BID #1: NEW FIELD LIGHT POLE AND ASSOCIATED: CONTROLS, CONDUITS, CONDUCTORS AND GROUNDING TO BE FURNISHED AND INSTALLED UNDER A SEPARATE CONTRACT.
13. PROVIDE BOLLARD LIGHT FIXTURE ON NEW FOUNDATION; SEE DETAIL #8 ON SHEET E-502.
14. PROVIDE SCHEDULE 40 PVC UNDERGROUND CONDUIT, INSTALLED MINIMUM OF 36" BELOW FINISHED GRADE, FOR BOLLARD LIGHT FIXTURES FROM LIGHTING RELAY 'LRI'; SEE DETAIL #6 ON SHEET E-502. PROVIDE (1) 1-1/4" PVC WITH: (2) #10 AWG CU, (1) #10 AWG CU GND.
15. UNDER ALTERNATE BID #2: REMOVE EXISTING TENNIS COURT LIGHT POLE, LIGHT POLE BASE AND ASSOCIATED UNDERGROUND CONDUIT AND CONDUCTORS COMPLETE BACK TO SOURCE OF FEED.
16. UNDER ALTERNATE BID #2: REEF EXISTING TENNIS COURT LIGHT POLE TO REMAIN, AFTER REMOVAL OF TENNIS COURT LIGHT POLES INDICATED, AS NECESSARY TO MAINTAIN OPERATION.



**CONFIDENTIAL COPYRIGHT 2022**  
SL ARCHITECTS, LLC AND ELEVATUS ARCHITECTURE  
ALL RIGHTS RESERVED. NO PART OF THIS DOCUMENT MAY BE REPRODUCED OR TRANSMITTED IN ANY FORM OR BY ANY MEANS, ELECTRONIC OR MECHANICAL, INCLUDING PHOTOCOPYING, RECORDING, OR BY ANY INFORMATION STORAGE AND RETRIEVAL SYSTEM, WITHOUT THE WRITTEN PERMISSION OF SL ARCHITECTS, LLC AND ELEVATUS ARCHITECTURE. THIS DOCUMENT IS THE PROPERTY OF SL ARCHITECTS, LLC AND ELEVATUS ARCHITECTURE. IT IS TO BE USED ONLY FOR THE PROJECT AND SITE SPECIFICALLY IDENTIFIED HEREIN. IT IS NOT TO BE USED FOR ANY OTHER PROJECT OR SITE WITHOUT THE WRITTEN PERMISSION OF SL ARCHITECTS, LLC AND ELEVATUS ARCHITECTURE. ANY REUSE OR MISUSE OF THIS DOCUMENT IS STRICTLY PROHIBITED. THE USER OF THIS DOCUMENT AGREES TO HOLD SL ARCHITECTS, LLC AND ELEVATUS ARCHITECTURE HARMLESS FROM AND AGAINST ALL CLAIMS, DAMAGES, LOSSES AND EXPENSES, INCLUDING REASONABLE ATTORNEY'S FEES, THAT MAY BE ASSERTED AGAINST THEM BY ANY THIRD PARTY AS A RESULT OF SUCH REUSE OR MISUSE.

**REGISTERED PROFESSIONAL ENGINEER**  
STEPHEN B. CLEBERT  
No. PE19400288  
STATE OF INDIANA  
Professional Seal

**LOFTUS ENGINEERING, INC.**  
201 S Capitol Avenue, Suite 310  
Indianapolis, IN 46225  
(317) 352-5822 www.LoftusEngineering.com

**New Castle CSC Athletic Facilities**  
801 Parkview Dr.  
New Castle, IN 47362



REVISIONS		
NO.	DESCRIPTION	DATE
1	ADDENDUM #4	04-16-2024

**PROJECT NO.**  
2301109  
**ISSUE DATE**  
03-13-2024  
**SUBMITTAL**  
Issue for Bids, Permits, and Construction

Electrical Site Plan

**ES101**