

# Addendum Number 2

## Issued 5/6/2024

for

### Franklin Active Adult Center (AAC)

160 E. Adams St.  
Franklin, IN 46131

Prepared for:

The City of Franklin and Franklin Parks & Recreation Department  
Franklin, IN 46131



Architects + Engineers

Solutions by Design Since 1937

## **ADDENDUM NO. 2**

### TO ALL BIDDERS OF RECORD AND TO WHOM IT MAY CONCERN:

This Addendum is being issued prior to the date for receiving bids.

This Addendum forms a part of the Contract Documents and modifies the original Drawings and Specifications as noted below and shall be incorporated into the Contract Drawings. All other provisions of the Drawings and Specifications shall remain unchanged.

This Addendum is issued in accordance with the provisions of the Notice to Bidders section of the Project Manual. All Bids shall be based upon work as modified by this Addendum.

Acknowledge receipt of this Addendum on the Bid Form. Failure to do so may result in disqualification of the Bidder. This Addendum **DOES NOT** change the Bid Date.

### GENERAL ITEMS:

- Item No. 1**      Question: Is there site plantings irrigation in the scope of work? No.
- Item No. 2**      Question: Are the stainless-steel hoods shown on sheet A807 part of the scope of work? Yes.
- Item No. 3**      Question: In Room 20 Auditorium, the finish schedule calls for porcelain tile wall base and vinyl plank as the flooring. Is this intended? Yes.
- Item No. 4**      Question: Is it acceptable to use MC cable in walls? Yes, MC cable is acceptable above ceilings and within walls of gypsum board and metal studs. However, conduit shall be used in concrete block walls and in concrete.
- Item No. 5**      Question: Where is AESS steel located? See 1/S102. All the HSS 8x6x3/8 tubes are exposed at the roof.
- Item No. 6**      Alternate 1: Theatrical, Sound and AV – Equipment List is attached.

### CHANGES TO SPECIFICATIONS:

- Item No. 7**      City of Franklin Bid Documents: Use the Bid Proposal Form Page 1 attached in lieu of the form in the Project Manual. This form includes lines for Allowances & Alternate No. 1.
- Item No. 8**      Section 012100 Allowances: Add an Unsuitable Soils Allowance as follows.
1.      Allowance B. Unsuitable Soils: Include the stipulated sum of \$165,000 for excavation and removal of unsuitable soils on site and placement of compacted fill as directed by the Geotechnical Engineer. The allowance

shall include the cost of the geotechnical engineer. Costs shall be documented using time & materials with receipts submitted to the City of Franklin requesting payment. Unused funds will be returned to the City of Franklin. If cost exceeds the allowance, a time and materials based change order shall be submitted to the City of Franklin.

- Item No. 9** Section 074646 Fiber-Cement Siding: Add 2.02.D – Finish of metal trim shall be clear anodized aluminum.
- Item No. 10** Section 074617 Prefinished Aluminum V-Groove Siding – Add Parallel Architectural Products to acceptable manufacturers.
- Item No. 11** Section 081113 Hollow Metal Doors & Frames: Revised gage of frames to 16 ga.
- Item No. 12** Section 081213 Hollow Metal Frames: Remove Paragraph 2.02 A. Frames are knock-down without integral casings.
- Item No. 13** Section 084229 Automatic Entrances:
1. Revise reference to basis of design from ASSA ABLOY VERSA MAX to Assa Abloy SL500-1 with break-out.
  2. Add Record 5100 Series door to acceptable manufacturers.
  3. Paragraph 2.02.E: Finish – Revise to dark bronze anodized.
- Item No. 14** Section 107380 Canopies: Add TFC as an acceptable manufacturer. The following shall be observed:
1. Comply with warranty requirements as stated in the project manual.
  2. Foundation rebar and anchors bolts shall be provided as part of the canopy cost.
  3. Canopy roof drainage shall work the same way as shown in the drawings.
- Item No. 15** Section 284613 Addressable Fire Alarm System
1. Modified acceptable manufacturer from “Siemens by Distribution Channel Only” to “Siemens”.
  2. Removed section 2.12 (B) for “Digital Alarm Communications Transmitter (DACT)”.

## **CHANGES TO DRAWINGS:**

- Item No. 16** Sheet A002: Wall System EW6. Add note indicating use of the same mortar as the building.
- Item No. 17** Sheet A100: Unsuitable Soils Plan. New sheet to identify known areas of unsuitable soils on site and scope of work for context related to Allowance. Attached.
- Item No. 18** Sheet A702: Add panic hardware to doors 6 and 6A.

## **ADDENDUM NO. 2**

**ADD2 - 3**O:\2021\210036\10100\Docs\Arch\02 - CA\01 - Bidding and

- Item No. 19** Sheet A703: Add a mid-rail to doors 6 and 6A (For panic hardware installation).
- Item No. 20** Sheet A806: Interior Elevation 16 – Dressing Rooms. Add under counter support brackets at ends and midpoints.
- Item No. 21** Sheet E701 attached: Electrical One-Line Diagram
1. Revised Fire Alarm Riser Diagram to clarify fire alarm system shall be a voice/strobe evacuation system.
  2. Revised Note 2 in the Fire Alarm Riser Diagram to indicate the microphone shall be provided at the Fire Alarm Annunciator Station.
- Item No. 22** Sheet E801 attached: Luminaire Schedule. Add Acceptable manufacturers as shown.

**END OF ADDENDUM NO. 2**

**BASE BID**

Item #	Description	Quantity	Units	Unit Price	Total
	Base Building	_____	_____	_____	

Alternate #1:

	Allowance A: Emergency Responder System				\$22,000
	Allowance B: Unsuitable Soils				\$165,000
TOTAL BID					

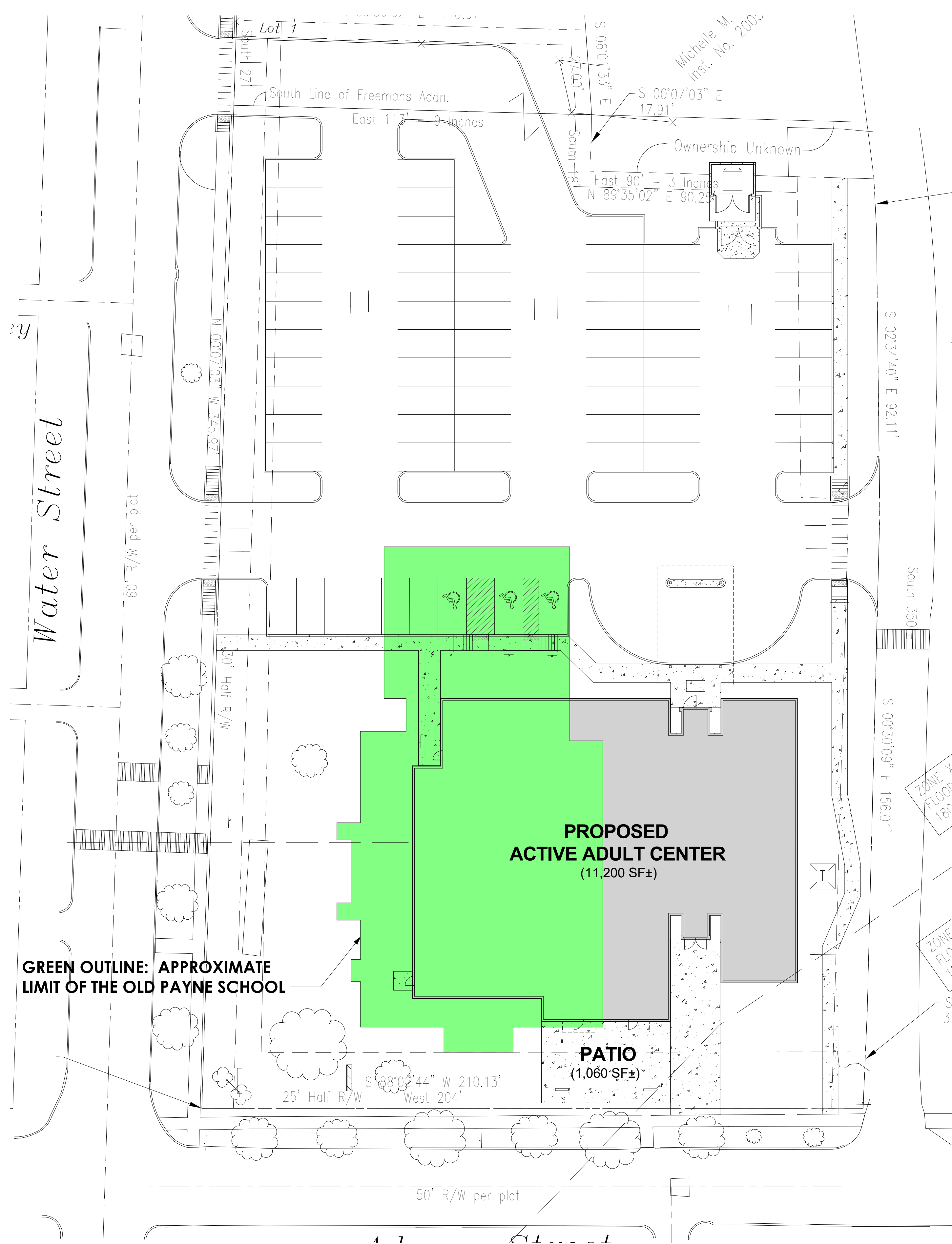
And in words:

Alternate No. 01: \_\_\_\_\_

**NAME**

And in words: \_\_\_\_\_

1 UNSUITABLE SOILS PLAN  
1" = 20'-0"



UNSUITABLE SOILS NOTES

1. THE PAYNE SCHOOL WAS THE MAJOR STRUCTURE ON SITE UNTIL ITS DEMOLITION. THE EXISTING AUDITORIUM TO BE DEMOLISHED ON THE EASTERN EDGE OF THE SITE WAS AN ADDITION TO THE SCHOOL. EXACT DATE UNKNOWN. FOR EXTENT OF SITE DEMOLITION, REFER TO CIVIL DOCUMENTS.
2. REFER TO THE GEOTECHNICAL REPORT INCLUDED IN THE PROJECT MANUAL FOR ADDITIONAL INFORMATION.
3. THE APPROXIMATE OUTLINE OF THE OLD PAYNE SCHOOL IS ILLUSTRATED ON THE UNSUITABLE SOILS PLAN. THIS IS CONSISTENT WITH SOIL BORINGS 7 THRU 11 IN THE GEOTECHNICAL REPORT WHERE FILL WAS IDENTIFIED.
4. REMOVE UNSUITABLE SOILS AS FOLLOWS:
  - A. AT NEW WALL FOOTINGS TO 6' DEEP AVERAGE.
  - B. AT NEW COLUMN FOOTINGS TO 4' DEEP AVERAGE.
  - C. AT PAVING AREAS TO 2' DEEP AVERAGE.
  - D. AT NEW FLOOR SLAB AREA TO 2' DEEP AVERAGE.
5. COMPACT SUBGRADE PER THE GEOTECHNICAL REPORT.
6. PLACE COMPACTED GRANULAR FILL IN 6\"/>

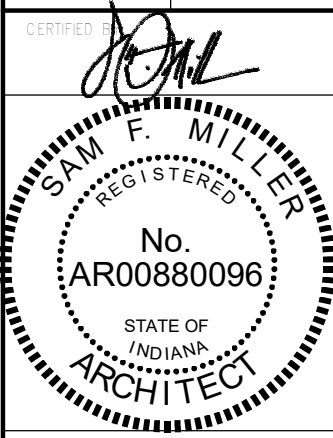
REVISION NUMBER	REVISION DATE	REVISION DESCRIPTION
2	05/04/2024	As Indicated

CONSULTANTS

3939 PRIORITY WAY SOUTH DRIVE  
SUITE 200  
INDIANAPOLIS, INDIANA 46240  
Phone (317) 844-4777  
Email: cripe@cripe.biz  
• CIVIL ENGINEERING  
• SURVEY & 3D LASER SCANNING  
• EQUIPMENT PLANNING  
• REAL ESTATE SERVICES



UNSUITABLE SOILS PLAN  
CITY OF FRANKLIN, IN  
ACTIVE ADULT CENTER (AAC)  
140 E ADAMS STREET  
FRANKLIN, IN 46131



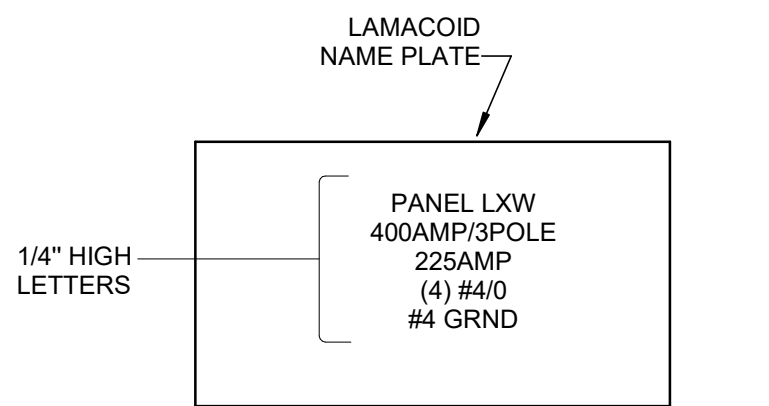
Drawn By:	Author
Checked By:	Checker
Quality Checked By:	Approver
As indicated	
Sheet	A100
Date	04/09/2024
File	0210036-10100

EQUIPMENT CONNECTION SCHEDULE							
EQUIP ID	DESCRIPTION	DISCONNECT MEANS	VOLTAGE	POLES	HP	POWER (kVA)	MCA
ACCU-1-1	AIR COOLED CONDENSING UNIT	EC SHALL PROVIDE 240V, 60A, 2-POLE, NEMA 3R, NON-FUSED DISCONNECT	208	2	-	5.82	35
ACCU-1-2	AIR COOLED CONDENSING UNIT	EC SHALL PROVIDE 240V, 60A, 2-POLE, NEMA 3R, NON-FUSED DISCONNECT	208	2	-	5.82	35
ACCU-2-1	AIR COOLED CONDENSING UNIT	EC SHALL PROVIDE 240V, 60A, 2-POLE, NEMA 3R, NON-FUSED DISCONNECT	208	2	-	5.82	35
ACCU-2-2	AIR COOLED CONDENSING UNIT	EC SHALL PROVIDE 240V, 60A, 2-POLE, NEMA 3R, NON-FUSED DISCONNECT	208	2	-	5.82	35
ACCU-3	AIR COOLED CONDENSING UNIT	EC SHALL PROVIDE 240V, 60A, 2-POLE, NEMA 3R, NON-FUSED DISCONNECT	208	2	-	4.66	28
ACCU-4	AIR COOLED CONDENSING UNIT	EC SHALL PROVIDE 240V, 60A, 2-POLE, NEMA 3R, NON-FUSED DISCONNECT	208	2	-	4.66	28
ACCU-5	AIR COOLED CONDENSING UNIT	EC SHALL PROVIDE 240V, 30A, 2-POLE, NEMA 3R, NON-FUSED DISCONNECT	208	2	-	3.30	20
ACCU-DS-1	AIR COOLED CONDENSING UNIT	EC SHALL PROVIDE 240V, 30A, 2-POLE, NEMA 3R, NON-FUSED DISCONNECT, EXTEND ELECTRICAL CONNECTION TO INTERIOR UNIT DS-1.	208	2	-	1.83	11
CUH-A	ELECTRIC CONCEALED UNIT HEATER	LOCAL DISCONNECT PROVIDED BY MANUFACTURER	208	3	-	5.00	17
DOAS-1	MAKE UP AIR UNIT	LOCAL DISCONNECT PROVIDED BY MANUFACTURER	208	3	3	17.77	62
DS-1	DUCTLESS SPLIT SYSTEM	UNIT ELECTRICALLY FED FROM EXTERIOR UNIT ACCU-DS-1.	208	2	-	0.21	1
DWH-1	GAS WATER HEATER	EC SHALL PROVIDE 120V, 20A MOTOR RATED TOGGLE SWITCH	120	1	-	0.50	5
EF-1	EXHAUST FAN	EC SHALL PROVIDE 120V, 20A MOTOR RATED TOGGLE SWITCH	120	1	1/4	0.50	7.25
EUH-A	ELECTRIC UNIT HEATER	LOCAL DISCONNECT PROVIDED BY MANUFACTURER	208	3	-	5.00	16
EWHA	ELECTRIC WALL UNIT HEATER	LOCAL DISCONNECT PROVIDED BY MANUFACTURER	208	3	-	4.00	14
FCU-1-1	FAN COIL UNIT	EC SHALL PROVIDE 120V, 20A MOTOR RATED TOGGLE SWITCH	120	1	1	1.34	14
FCU-1-2	FAN COIL UNIT	EC SHALL PROVIDE 120V, 20A MOTOR RATED TOGGLE SWITCH	120	1	1	1.34	14
FCU-2-1	FAN COIL UNIT	EC SHALL PROVIDE 120V, 20A MOTOR RATED TOGGLE SWITCH	120	1	1	1.34	14
FCU-2-2	FAN COIL UNIT	EC SHALL PROVIDE 120V, 20A MOTOR RATED TOGGLE SWITCH	120	1	1	1.34	14
FCU-3	FAN COIL UNIT	EC SHALL PROVIDE 120V, 20A MOTOR RATED TOGGLE SWITCH	120	1	1	1.06	11
FCU-4	FAN COIL UNIT	EC SHALL PROVIDE 120V, 20A MOTOR RATED TOGGLE SWITCH	120	1	1	1.06	11
FCU-5	FAN COIL UNIT	EC SHALL PROVIDE 120V, 20A MOTOR RATED TOGGLE SWITCH	120	1	1	0.86	9
HWCP-1	RECIRCULATING PUMP	EC SHALL PROVIDE 120V, 20A MOTOR RATED TOGGLE SWITCH	120	1	1/12	0.50	5

#### PANELBOARD AND WIRING SCHEDULE

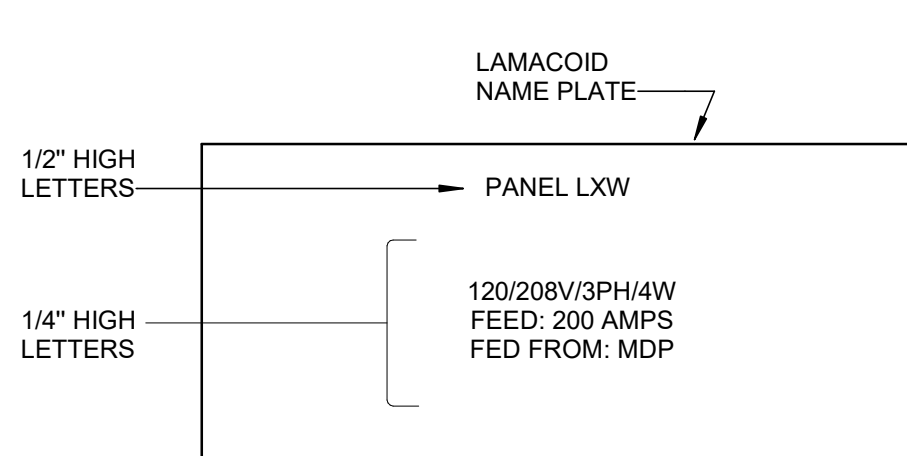
PANEL: DP1			MAINS TYPE: MCB								SCCR (kA): 35 kAIC									
VOLTAGE: 208Y/120V, 3P, 4W			SPD: Yes								AVAIL FAULT CURRENT (kA): 14.5 kAIC									
AMPERES: 600 A			MOUNTING: SURFACE								SUPPLY FROM: UTILITY									
CIRCUIT DESCRIPTION	WIRE	GND	C	OCB	P	CKT	A		B		C		CKT	P	OCB	C	GND	WIRE	CIRCUIT DESCRIPTION	
LPW2				125	3	1	10.5	19.2					2	3	200				LPW1	
						3				11.6	14.9									4
						5						14.4	14.6							6
DOAS-1				70	3	7	5.9	12.1		5.9	9.6		8	3	125				LPE	
						9						5.9	7.5							12
						11														
DR (DIMMER RACK)				60	3	13	5.3	0.0		4.1	0.0		14	1	20	--	--	--	SPARE	
						15						4.3	0.0	16	1	20	--	--	--	SPARE
						17								18	1	20	--	--	--	SPARE
EUH-A				20	3	19	1.7	0.0					20	1	20	--	--	--	SPARE	
						21				1.7	0.0			22	1	20	--	--	--	SPARE
						23						1.7	0.0	24	1	20	--	--	--	SPARE
SPACE	--	--	--	--	1	25	--	--					26	1	--	--	--	SPACE		
SPACE	--	--	--	--	1	27			--	--			28	1	--	--	--	SPACE		
SPACE	--	--	--	--	1	29					--	--	30	1	--	--	--	SPACE		
SPACE	--	--	--	--	1	31	--	--					32	1	--	--	--	SPACE		
SPACE	--	--	--	--	1	33			--	--			34	1	--	--	--	SPACE		
SPACE	--	--	--	--	1	35					--	--	36	1	--	--	--	SPACE		
SPACE	--	--	--	--	1	37	--	0.0					38							
SPACE	--	--	--	--	1	39			--	0.0			40	3	30	--	--	--	SPD	
SPACE	--	--	--	--	1	41						--	0.0	42						
TOTAL LOAD (kVA):							54.6 kVA		47.8 kVA		48.4 kVA									
TOTAL CURRENT (A):							456 A		399 A		404 A									
LOAD CLASSIFICATION			CONNECTED LOAD		DEMAND FACTOR		ESTIMATED DEMAND		PANEL TOTALS											
EQUIP			97099 VA		100.00%		97099 VA		TOTAL CONNECTED LOAD: 151 kVA											
LTNG			6706 VA		100.00%		6706 VA		TOTAL ESTIMATED DEMAND: 139 kVA											
Lighting			153 VA		100.00%		153 VA		TOTAL CONNECTED CURRENT: 419 A											
REC			33212 VA		65.05%		21606 VA		TOTAL ESTIMATED DEMAND CURRENT: 386 A											
Spare			13650 VA		100.00%		13650 VA													

NOTES: WHERE NOT LISTED, WIRE AND CONDUIT SHALL BE MINIMUM PER SPECIFICATIONS. SPARE BREAKERS TO BE 20A/1P.



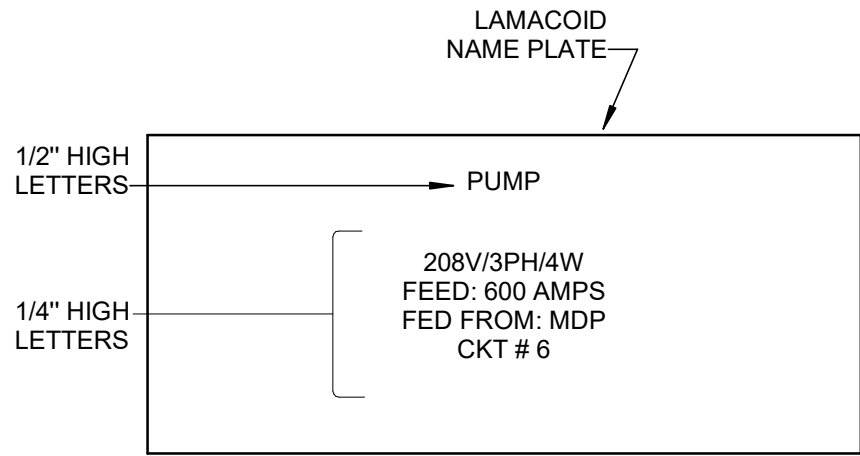
NORMAL POWER LABELS SHALL BE BLACK WITH WHITE LETTERS EMERGENCY POWER LABELS SHALL BE RED WITH WHITE LETTERS UTILIZE SCREW-ON TYPE LAMACOID PLATES.

TYPICAL SWITCHBOARD AND DISTRIBUTION PANELBOARD CIRCUIT LABEL NAMEPLATE DETAIL  
NO SCALE



NORMAL POWER LABELS SHALL BE BLACK WITH WHITE LETTERS EMERGENCY POWER LABELS SHALL BE RED WITH WHITE LETTERS UTILIZE SCREW-ON TYPE LAMACOID PLATES.

TYPICAL POWER PANEL NAMEPLATE DETAIL  
NO SCALE

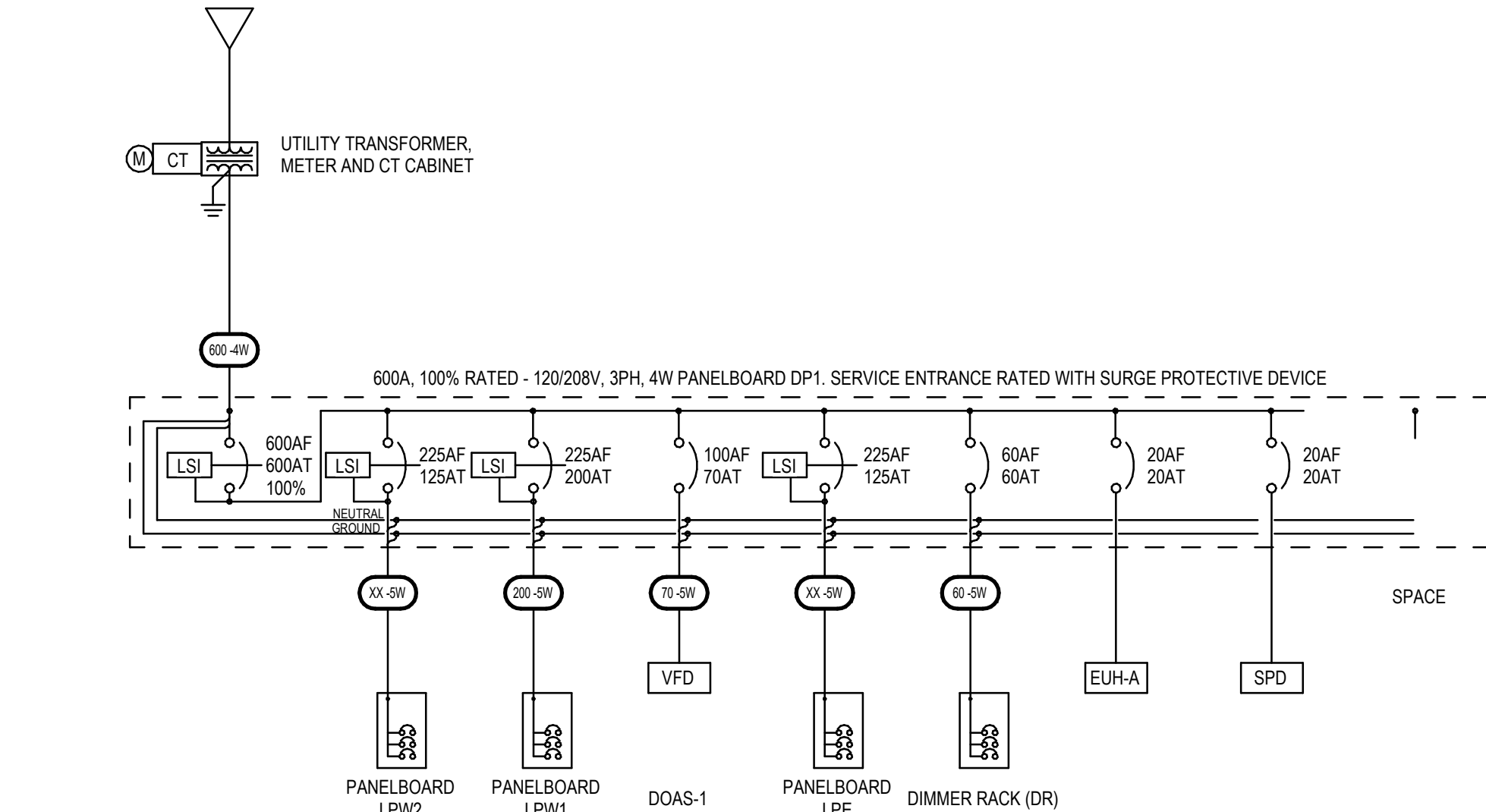


NORMAL POWER LABELS SHALL BE BLACK WITH WHITE LETTERS EMERGENCY POWER LABELS SHALL BE RED WITH WHITE LETTERS UTILIZE SCREW-ON TYPE LAMACOID PLATES.

TYPICAL DISCONNECT AND COMBINATION STARTER/DISCONNECT NAMEPLATE DETAIL  
NO SCALE

### 3 PANEL LABELING DETAILS

NO SCALE



### 1 ONE-LINE DIAGRAM

NO SCALE

TAGGED NOTES:

- PROVIDE NEW SURFACE MOUNTED, MICROPROCESSOR BASED, FIRE ALARM TRANSponder PANEL / CENTRAL PROCESSING UNIT (C.P.U.). PANEL SHALL BE CAPABLE OF MONITORING ALL INDIVIDUALLY ADDRESSABLE ALARM INDICATING DEVICES OR POINTS AS INDICATED AND WITH A MINIMUM OF 20% SPARE CAPACITY FOR FUTURE EXPANSION. ALL SYSTEM EQUIPMENT SHALL BE HOUSED IN A SINGLE CABINET. REFER TO SPECIFICATIONS FOR FURTHER REQUIREMENTS. SYSTEM SHALL BE A VOICE STROBE EVACUATION SYSTEM.
- NEW REMOTE FLUSH-MOUNTED FIRE ALARM ANNUNCIATOR STATION WITH LCD DISPLAY. SEE FLOOR PLANS FOR LOCATIONS AND QUANTITY. PROVIDE MICROPHONE AT FIRE ALARM ANNUNCIATOR STATION. TO ALL OTHER DEVICES ON LOOP/CIRCUIT AS REQUIRED. REFER TO FLOOR PLAN FOR PROPOSED DEVICE LOCATIONS.
- PROVIDE ETHERNET IP LINE TO REMOTE REPORTING DIALER FOR CENTRAL STATION REPORTING AS REQUIRED PER NFPA. COORDINATE WITH OWNER AND CENTRAL RECEIVING STATION AS REQUIRED. PROVIDE CELLULAR DIALER AS SECONDARY CONNECTION.
- PROVIDE ZONE ADDRESSABLE MODULE FOR SUPERVISION OF ANCILLARY FIRE PROTECTION/MONITORING SYSTEMS. DEVICE SHALL BE SURFACE MOUNTED IN NEMA-1 ENCLOSURE, ABOVE SUSPENDED CEILING. PROVIDE QUANTITY AND TYPE AS REQUIRED FOR FIRE PROTECTION TAMPER AND FLOW SWITCHES, FIRE PROTECTION POST-INDICATOR VALVE, DRY/CHEMICAL FIRE SUPPRESSION SYSTEMS, AND KITCHEN HOOD FIRE SUPPRESSION SYSTEMS.
- PROVIDE ADDRESSABLE FIRE ALARM RELAY FOR SIGNAL OUTPUT TO ANCILLARY BUILDING SYSTEMS. DEVICE SHALL BE SURFACE MOUNTED IN NEMA-1 ENCLOSURE, ABOVE SUSPENDED CEILING. PROVIDE QUANTITY AND TYPE AS REQUIRED FOR: OPERABLE FIRE SHUTTERS TO CLOSE ON FIRE ALARM, ACCESS CONTROL DOORS TO UNLOCK AND POSITIVELY LATCH ON FIRE ALARM, AND ELEVATOR FOR ALL SPECIFIED AND REQUIRED FUNCTIONS.
- ROUTE CONTROL WIRING (IN CONDUIT) BACK TO NEW HVAC EQUIPMENT CONTROLS FOR AUTOMATIC SHUTDOWN.
- PROVIDE ETHERNET IP CONNECTION TO OWNER'S NETWORK FOR REPORTING/LOGGING. COORDINATE WITH OWNER PRIOR TO CONSTRUCTION.
- PROVIDE NEW FLUSH-MOUNTED REMOTE ALARM/POWER INDICATING KEY RESET/TEST STATION ON CORRIDOR WALL (WHENEVER POSSIBLE) AT 7'-6" AFF BELOW SMOKE DAMPER/DUCT SMOKE DETECTOR LOCATION AS REQUIRED.
- PROVIDE AN "ISOLATOR MODULE" AT ALL BRANCH RUNS. MOUNT IN A SURFACE NEMA-1 ENCLOSURE ABOVE THE SUSPENDED CEILING. PROVIDE AS REQUIRED BY SYSTEM MANUFACTURER TO ISOLATE LOOPS ON EACH FLOOR AND WITHIN EACH SMOKE COMPARTMENT.
- PROVIDE SEPARATE, DEDICATED CIRCUIT FOR CARBON MONOXIDE ALARMS. A CARBON MONOXIDE ALARM SHALL INDICATE AS A SUPERVISORY SIGNAL ONLY AND SHALL NOT INITIATE A FIRE ALARM. SINGLE-STATION ALARMS IN EACH SLEEPING UNIT SHALL BE CONNECTED TO ALL OTHER SINGLE-STATION ALARMS IN THE UNIT. WHEN ANY DETECTOR ALARMS, ALL DETECTORS ON THE UNIT SHALL ALARM. PROVIDE NUMBER OF NOTIFICATION APPLIANCE POWER SUPPLIES AS REQUIRED. LOCATE IN ELECTRICAL ROOMS. SUBMIT PROPOSED LOCATIONS IN SHOP DRAWINGS FOR REVIEW.

### ELECTRICAL RISER NOTES

- PROVIDE ENGRAVED LAMACOID LABELS FOR ALL POWER DISTRIBUTION EQUIPMENT FURNISHED OR MODIFIED IN THIS PROJECT, LABELS PER DETAILS AND SPECIFICATIONS.
- SERVICE EQUIPMENT SHALL BE MARKED WITH THE MAXIMUM AVAILABLE FAULT-CURRENT AT THE EQUIPMENT AND THE DATE THE CALCULATION WAS PERFORMED. APPLY A TYPE-WRITTEN ADHESIVE LABEL WITH WHITE BACKGROUND, 1/2" HIGH BLACK LETTERING.
- CONTRACTOR SHALL INSTALL SEPARATE CONDUITS, PULL BOXES, ETC. FOR EACH EMERGENCY POWER BRANCH & NORMAL POWER PER NEC FOR COMPLETE SEPARATION OF POWER SERVICES.
- ALL CIRCUIT BREAKERS AND/OR DISCONNECTS SERVING THE PRIMARY SIDE OF A TRANSFORMER WHICH ARE NOT WITHIN SIGHT OF THE TRANSFORMER SHALL BE PROVIDED WITH PERMANENTLY INSTALLED MEANS TO LOCK THE BREAKER IN THE OFF POSITION. SUCH TRANSFORMERS SHALL HAVE THE ROOM NAME AND NUMBER OF THE PRIMARY DISCONNECTING MEANS ENGRAVED ON THE EQUIPMENT NAMEPLATE.
- REFER TO SPECIFICATIONS FOR ARC FLASH AND RELATED POWER SYSTEM STUDY REQUIREMENTS.

### ONE-LINE FEEDER SCHEDULE (COPPER)

NOTES:

- TAGS WITH SUFFIX "-3W" ARE THREE-WIRE, NO NEUTRAL.

TAG	OCBP SETTING	WIRE SIZE	EQUIP GROUND SIZE	CONDUIT SIZE
60	60/3 (4W)	(4) #6	(1) #10	1"
70	70/3 (4W)	(4) #4	(1) #8	1-1/4"
200	200/3 (4W)	(4) #4/0	(1) #4	2-1/2"
600	600/3 (4W)	2 SETS OF (4) #350 KCMIL	-	2-3"



PANELBOARD AND WIRING SCHEDULE

PANEL: LPE				MAINS TYPE: MLO						SCCR (KA): 22 kAIC									
VOLTAGE: 208Y/120V/3P/4W				SPD: No						AVAIL FAULT CURRENT (KA): 12.8 kAIC									
AMPERES: 125 A				MOUNTING: SURFACE						SUPPLY FROM: DP1									
CIRCUIT DESCRIPTION		WIRE	GND	C	OC	P	CKT	A	B	C	CKT	P	OC	C	GND	WIRE	CIRCUIT DESCRIPTION		
CUH-A					20	3	1	1.7	1.7			2					CUH-A		
							3			1.7	1.7		4	3	20				
							5					1.7	1.7						
ACCU-DS-1					20	2	7	1.0	2.3			8	2	30			ACCU-4		
							9					6							
FCU-4					20	1	11					1.1	0.2	12			REC - EWC (GFI)		
REC - EASTERN LOBBY					20	1	13	1.3	0.3			14	1	20			FAA (NOTE 1)		
REC - MEETING & LIBRARY					20	1	15		0.9	0.5		16	1	20			FACP (NOTE 1)		
LTNG INVERTER - ELP1					20	1	17				0.0	0.8	18	1	20		LTG - SW EXTERIOR		
LTG - EAST SIDE					20	1	19	0.7	1.1			20	1	20			LTG - LOBBY		
REC - IT RACK					30	1	21		0.2	0.4		22	1	20			REC - IT		
REC - EAST EXTERIOR					20	1	23				0.7	0.5	24	1	20		EF-1		
REC - GAME ROOM					20	1	25	1.1	0.9			26	1	20			REC - EAST RESTROOMS		
REC - PATIO					20	1	27		0.5	0.4		28	2	20			LTNG - SITE		
PWR - DESTRAT FANS					20	1	29				0.4	0.4	30	2	20				
SPARE		--	--	--	20	1	31	0.0	0.1			32	1	20			LTNG - NE EXTERIOR		
SPARE		--	--	--	20	1	33		0.0	0.0		34	1	20	--	--	SPARE		
SPARE		--	--	--	20	1	35				0.0	0.0	36	1	20	--	SPARE		
SPARE		--	--	--	20	1	37	0.0	0.0			38	1	20	--	--	SPARE		
SPARE		--	--	--	20	1	39		0.0	0.0		40	1	20	--	--	SPARE		
SPARE		--	--	--	20	1	41				0.0	0.0	42	1	20	--	SPARE		
TOTAL LOAD (kVA):				12.1 kVA				9.6 kVA				7.5 kVA							
TOTAL CURRENT (A):				104 A				83 A				62 A							
LOAD CLASSIFICATION		CONNECTED LOAD		DEMAND FACTOR		ESTIMATED DEMAND		PANEL TOTALS											
EQUIP		19809 VA		100.00%		19809 VA		TOTAL CONNECTED LOAD: 29 kVA											
LTNG		3452 VA		100.00%		3452 VA		TOTAL ESTIMATED DEMAND: 29 kVA											
Lighting		153 VA		100.00%		153 VA		TOTAL CONNECTED CURRENT: 81 A											
REC		5760 VA		100.00%		5760 VA		TOTAL ESTIMATED DEMAND CURRENT: 81 A											
NOTES: WHERE NOT LISTED, WIRE AND CONDUIT SHALL BE MINIMUM PER SPECIFICATIONS. SPARE BREAKERS TO BE 20A/1P.																			
NOTE 1 - PROVIDE RED LOCKING CLIPS																			

PANELBOARD AND WIRING SCHEDULE

PANEL: LPW2				MAINS TYPE: MCB				SCCR (KA): 10 kAIC											
VOLTAGE: 208Y/120V 3P/4W				SPD: No				AVAIL FAULT CURRENT (KA): 9.5 kAIC											
AMPERES: 125 A				MOUNTING: FLUSH				SUPPLY FROM: DP1											
CIRCUIT DESCRIPTION	WIRE	GND	C	OC	P	CKT	A	B	C	CKT	P	OC	C	GND	WIRE	CIRCUIT DESCRIPTION			
REC - ICE MACHINE (GFCI)				20	1	1	0.5	0.2				2	1	20		REC - PROJECTOR			
PROJECTOR SCREEN				20	1	3			0.2	1.1		4	1	20		REC - PLATFORM			
PWR - PLATFORM LIFT				20	1	5					1.2	1.0	6	1	20	AV RACK			
AV RACK				20	1	7	1.0	1.1				8	1	20		REC - AUDITORIUM			
REC - RR + CUSTODIAL				20	1	9			1.4	0.7		10	1	20		REC - FOOD STAGING			
REC - FOOD STAGING				20	1	11					0.2	1.1	12	1	20	REC - BACK STAGE + WEST...			
REC - FOOD WARMING				20	1	13	0.5	0.4				14	1	20		REC - FOOD WARMING			
REC - EVENTS				20	1	15			0.7	0.9		16	1	20		REC - WEST EXTERIOR			
REC - EVENTS				20	1	17					0.9	1.0	18	1	20	REC - EVENT AV RACK			
EAST DOOR POWER				20	1	19	0.4	0.5				20	1	20		REC - FOOD STAGING REF			
REC - ICE MACHINE (GFCI)				20	1	21			0.2	0.2		22	1	20		REC - FOOD WARMING REF			
REC - HALLWAY Z7				20	1	23					0.7	0.7	24	1	20	REC - PANTRY			
REC - OFFICE 03				20	1	25	0.7	0.7				26	1	20		REC - OFFICE 05			
WEST DOOR POWER				20	1	27			0.2	3.3		28	2	50		REC - STOVE			
REC - STOVE				50	2	29					3.3	3.3	30	3					
LTNG - AUDITORIUM				20	1	33	3.3	1.0				32	1	20		LTNG - EVENTS			
REC - STORAGE + MECH				20	1	35			1.3	1.0		34	1	20		LTNG - HALLWAY + OFFICES			
SPARE	--	--	--	20	1	37	0.0	0.2			0.7	0.2	36	1	20	DOOR POWER			
SPARE	--	--	--	20	1	39			0.0	0.4		38	1	20		PWR - HOOD			
SPARE	--	--	--	20	1	41					0.0	0.0	42	1	20	PWR - AUTO DOORS			
																KNOX BOX			
TOTAL LOAD (kVA):				10.5 kVA				11.6 kVA				14.4 kVA							
TOTAL CURRENT (A):				87 A				99 A				121 A							
LOAD CLASSIFICATION		CONNECTED LOAD		DEMAND FACTOR		ESTIMATED DEMAND		PANEL TOTALS											
EQUIP		6000 VA		100.00%		6000 VA		TOTAL CONNECTED LOAD: 37 kVA											
LTNG		3254 VA		100.00%		3254 VA		TOTAL ESTIMATED DEMAND: 28 kVA											
REC		27272 VA		68.33%		18636 VA		TOTAL CONNECTED CURRENT: 101 A											
								TOTAL ESTIMATED DEMAND CURRENT: 77 A											
NOTES: WHERE NOT LISTED, WIRE AND CONDUIT SHALL BE MINIMUM PER SPECIFICATIONS. SPARE BREAKERS TO BE 20A/1P.																			

PANELBOARD AND WIRING SCHEDULE

PANEL: LPW1				MAINS TYPE: MCB				SCCR (KA): 10 KAIC									
VOLTAGE: 208Y/120V 3P/4W				SPD: No				AVAIL FAULT CURRENT (KA): 8 KAIC									
AMPERES: 200 A				MOUNTING: FLUSH				SUPPLY FROM: DP1									
CIRCUIT DESCRIPTION		WIRE	GND	C	OC	P	CKT	A	B	C	CKT	P	OC	C	GND	WIRE	CIRCUIT DESCRIPTION
EUH-A					20	3	1	1.7	1.3		2						EWH-A
						5				1.7	1.3						
						7	2.9	2.9			1.7	1.3					
ACCU-2-1					40	2	9		2.9	2.9		10	2	40			ACCU1-1
						11					2.9	2.9	12	2	40		ACCU-2-2
ACCU1-2					40	2	13	2.9	2.9			14	2	40			ACCU-2
					30	2	15		2.3	1.7		16	2	25			
						17					2.3	1.7	18				
FCU-1-1					20	1	19	1.3	1.3			20	1	20			FCU-1-2
FCU-3					20	1	21			1.1	0.9	22	1	20			FCU-5
FCU-2-1					20	1	23				1.3	0.5	24	1	20		GWH-1
FCU-2-2					20	1	25	1.3	0.5			26	1	20			RP-1
SPARE		--	--	--	20	1	27			0.0	0.2	28	1	20			WATER SOFTENER
SPARE		--	--	--	20	1	29			0.0	0.0	30	1	20	--	--	--
SPARE		--	--	--	20	1	31	0.0	0.0			32	1	20	--	--	SPARE
SPARE		--	--	--	20	1	33		0.0	0.0		34	1	20	--	--	SPARE
SPARE		--	--	--	20	1	35			0.0	0.0	36	1	20	--	--	SPARE
SPARE		--	--	--	20	1	37	0.0	0.0			38	1	20	--	--	SPARE
SPARE		--	--	--	20	1	39			0.0	0.0	40	1	20	--	--	SPARE
SPARE		--	--	--	20	1	41					42	1	20	--	--	SPARE
TOTAL LOAD (KVA):								19.2 kVA		14.9 kVA		14.6 kVA					
TOTAL CURRENT (A):								160 A		125 A		122 A					
LOAD CLASSIFICATION		CONNECTED LOAD		DEMAND FACTOR		ESTIMATED DEMAND		PANEL TOTALS									
EQUIP		48520 VA		100.00%		48520 VA		TOTAL CONNECTED LOAD: 49 KVA									
REC		180 VA		100.00%		180 VA		TOTAL ESTIMATED DEMAND: 49 KVA									
								TOTAL CONNECTED CURRENT: 135 A									
								TOTAL ESTIMATED DEMAND CURRENT: 135 A									
NOTES: WHERE NOT LISTED, WIRE AND CONDUIT SHALL BE MINIMUM PER SPECIFICATIONS. SPARE BREAKERS TO BE 20A/1P.																	



QTY	MFGR	Part #	Description
<b>AUDIO &amp; CONTROLS - BASE SYSTEM</b>			
<b>RACKING</b>			
1	LEGRAND	DWR-35-22	
1	LEGRAND	VFD-35	
1	LEGRAND	D3	
1	LEGRAND	PDS-620R	
1	LEGRAND	VT2-CP12	
1	LEGRAND	BR1	
<b>COMPONENTS</b>			
1	TASCAM	TASCAM DC-400U	Rack-mount CD / Media Player with Bluetooth Receiver and AM/FM Tuner
1	HARMAN	DMS800 D5	Dual Wireless Mic
1	HARMAN	DVX-2265-4K, 6X2 ALL-IN-ONE 4K60	Room Controller
1	HARMAN	MT-1002,10IN MODERO TABLETOP TOUCH PANEL	Touch Screen (location TBD)
12	HARMAN	4INCEILING SPKR W/ X-FORMER (4PCS P/CTN)	JBL 8124
As Req	HARMAN	MTC-8124C 4IN C - RING	
As Req	HARMAN	S/M,MTC-RAIL/MSTRPK-4 CANT BE BROKEN	
3	AtlasIED	AT35D	Volume Control
1	CISCO	CISCO CBS350-24P-4G	
As Req	TBD	ALLOWANCE FOR PATCH PANEL & ACCESSORIES	
As Req	WESTPENN	452BK1000	1P 22G STRD SHLD PVC JKT
As Req	WESTPENN	4236FBK1000	4P 23G SHLD CAT6 PVC
As Req	WESTPENN	227BK1000	1P 12G STRD USHLD PVC JKT
As Req	ACDM	ALLOWANCE FOR FIRE ALARM INTERFACE	
As Req	ACDM	LV TERM SUPPLIES	
<b>AUDIO SYSTEM EXPANDED</b>			
<b>COMPONENTS</b>			
1	Odyssey	FZ1316WDLXII	Rack Case with Wheels and Tables, 13 Unit Top Rack, 16 Unit Bottom Rack
1	LEGRAND	PDS-620R	
1	TASCAM	TASCAM DC-400U	Rack-mount CD / Media Player with Bluetooth Receiver and AM/FM Tuner
3	HARMAN	DMS800 D5	Dual Wireless Mic
8	WHIRLWIND	MK406NP	6' MK4 Series XLRM-XLRF Microphone Cable

1	WHIRLWIND	MK425NP	25' MK4 Series XLRM-XLRF Microphone Cable
1	HARMAN	5035677	SI EXPRESSION 1 CONSOLE
1	LEGRAND	D3	
<b>VIDEO SYSTEM EXPANDED</b>			
<b>COMPONENTS</b>			
2	HARMAN	AMX-VTT0001B	DX-TX-DWP-4K60-BL Video Wall Plate
1	HARMAN	FGN4321-SA	NMX-ATC-N4321, AUDIO TRANSCEIVER, 2 CHAN
1	HARMAN	FG2100-22	COM2, ICSLAN SERIAL INTERFACE, 2 PORT
1	HARMAN	AMX-N26D001	N2622 4K60 DECODER
1	LEGRAND	70208LC	137" Diagonal, Black Case, Reverse Roll, Max Drop
1	TBD	ALLOWANCE FOR SCREEN RIGGING MATERIALS AS REQUIRED	Fasten to Rear of Proscenium
1	Dukane	DUKANE 6780WU-L	WUXGA, 8000 Lumens, LCD, Lens Shift, Network, HDBT In/Out, HDMI x 2, Display Port, Lens Sold Separately •
1	Dukane	DUKANE NP43ZL	Long Throw Power Zoom Lens, 2.99 - 5.98:1 (Replaces the NP42ZL)•
As Req	McMaster	3310T766	8', black strut
As Req	McMaster	1815T11	Strut Clamp
1	LEGRAND	CMA-372	Offset Unistrut Adapter
1	LEGRAND	RPAUW	Universal RPA Ceiling Projector Mount - RPAUW
1	LEGRAND	CMS0305W	3-5' Adjustable Extension Column, Pole
1	LEGRAND	CMA480W	Column Storage Shelf, White
1	LEGRAND	CMS003W	3 Inch Fixed Extension Column, Pole
As Req	WESTPENN	241GY0500	4C 22G STRD USHLD PVC JKT
As Req	WESTPENN	4236FBK1000	4P 23G SHLD CAT6 PVC
<b>AUDIO - EVENT SPACE</b>			
<b>RACKING</b>			
1	LEGRAND	DWR-10-22	
1	LEGRAND	VFD-10	
1	LEGRAND	D3	
1	LEGRAND	PD-920R	
1	LEGRAND	VT2-CP12	
<b>COMPONENTS</b>			
1	TASCAM	TASCAM DC-400U	Rack-mount CD / Media Player with Bluetooth Receiver and AM/FM Tuner
1	HARMAN	NVMA1120-0-US	4 Channel 1X120W MIXER AMP 120V
1	HARMAN	DMS800 D5	Dual Wireless Mic
8	HARMAN	4INCEILING SPKR W/ X-FORMER (4PCS P/CTN)	JBL 8124
As Req	HARMAN	MTC-8124C 4IN C - RING	

As Req	HARMAN	S/M,MTC-RAIL/MSTRPK-4 CANT BE BROKEN	
1	AtlasIED	AT100D	Volume Control
As Req	WESTPENN	452BK1000	1P 22G STRD SHLD PVC JKT
As Req	WESTPENN	227BK1000	1P 12G STRD USHLD PVC JKT
As Req	TBD	ALLOWANCE FOR FIRE ALARM INTERFACE	

LIGHTING			
QTY	MFGR	Part #	Description
As Req	WESTPENN	452BK1000	1P 22G STRD SHLD PVC JKT
As Req	WESTPENN	4236FBK1000	4P 23G SHLD CAT6 PVC
As Req	WESTPENN	227BK1000	1P 12G STRD USHLD PVC JKT
As Req	WESTPENN	D2402	24AWG 4-Conductor Stranded Shielded Data Cable
2	The Light Source	PDP1.5B288-3WE8I1X18-EX16F	MEGABATTEN, 24'0", 3 Circuit, Matte Black
8	The Light Source	MBATB	Mega-Batten Clamp, Black
8	The Light Source	MBAT-TRH.500B	Mega-Batten Clamp Hanger, 1/2, Black
1	The Light Source	PDP1.5WM288-3WE8I1X18-EX16F	MEGABATTEN, 24'0", 3 Circuit, Matte White
4	The Light Source	MBATW	Mega-Batten Clamp, White
4	The Light Source	MBAT-TRH.500W	Mega-Batten Clamp Hanger, 1/2, White
17	The Light Source	MLB	clamp
9	The Light Source	MLW	clamp
17	FEHR	39312-30B	1/8 X 30in 7x7 Galvanized Lighting Restraint Cable with 5/16 Spring Hook, Black
9	FEHR	39312-30W	1/8 X 30in 7x7 Galvanized Lighting Restraint Cable with 5/16 Spring Hook, White
2	FourStar	F8X8BAWP012524AC D	8X8 BLACK ANOD PLATE W/ (1)5P XLRF (1)5- XLRM (2) XLRF SCREW TERM (1) XLRM SCREW TERM
1	FourStar	F3GBAWP012524ACD	3 GANG BLACK ANOD PLATE W/ (1)5P XLRF (1)5P XLRM
9	FourStar	FPDMX3-5P-5 WHT	24-1PR DMX 3 PIN CABLE XLRF 5P - XLRM 5P WHITE, 5FT
9	FourStar	FPOW123TRU1F/EDIM-5 WHT	12-3C SJTOW TRUE 1 FEMALE - EDISON MALE WHITE, 5FT
12	FourStar	FPOW123TRU1F/EDIM-5	12-3C SJOOW TRUE 1 FEMALE TO MALE EDISON, 5FT
12	FourStar	FPDMX5-5	DMX 5P XLRF-XLRM 5FT
<b>A21 CONVECTION-COOLED DIMMER/RELAY CABINET</b>			
<b>Designed For 120/208V, 3-Phase, 4-Wire &amp; Ground Operation</b>			
1	Vari-Lite	74123C	A21 6-space dimmer cabinet, 120V, Master
1	Vari-Lite	74141	A21 3-space, 6-space aux. breaker kit (3 circuit breakers, 20A, 120V)
1	Vari-Lite	A21-UL924-6	A21 6-space UL924 system base kit with breaker security locks
1	Vari-Lite	74181	A21 blank filler module
1	Vari-Lite	74197	Quad 2000VA, 0-10VDC dimmer module, 120V

4	Vari-Lite	74195	Quad 2400W non-dim module, 120V
<b>POWER FAILURE LOAD TRANSFER SYSTEM</b>			
<b>Designed For Individual 20A Feeds, 120V AC Operation UL 1008 Listed</b>			
1	Vari-Lite	SSRC-ELTP-4-1	Power Failure Transfer Cabinet, with
			4 - 20 Amp Circuits (2 wire) - 8 poles individual circuit feeds
<b>CUSTOM DIN-RAIL INTERFACE ENCLOSURE</b>			
1	Vari-Lite	3-191-XXXX	Custom Control Enclosure Assembly, consisting of
1			Vision.net DIN-rail enclosure, large, 21"x28", containing
1			Vision.net 4-way data splitter module, 6SU
1			Vision.Net Gateway 7SU
1			Vision.Net 1-port Gateway Module 4SU
1			Vision.Net Module - DMX (1 universe)
2			StrandNet 3 port DMX Node DIN-Rail
2			Strand RDM 6-way DMX/RDM splitter, 24V
1			eDIN DMX-to-Analog, 16-Channel
1			Vision.net DIN-rail Power Supply, 24V, 150W, 6SU
<b>RECEPTACLE STATIONS</b>			
<b>Stainless steel faceplate with insert</b>			
1	Vari-Lite	63035USB	Vision.net RS232 receptacle station w/ USB
<b>VISION.NET CONTROL STATIONS</b>			
<b>Soft white faceplate finish, standard</b>			
2	Vari-Lite	63325	Vision.Net Pushbutton Station, 5 buttons, 1 gang
10	Vari-Lite	ENG/VN	Custom Engraved Buttons
<b>VISION.NET CONTROL STATIONS</b>			
<b>Soft white faceplate finish, standard</b>			
2	Vari-Lite	63325	Vision.Net Pushbutton Station, 5 buttons, 1 gang
10	Vari-Lite	ENG/VN	Custom Engraved Buttons
2		63325-CK	Color Kit, 5 button
<b>FLX S24</b>			
1	Vari-Lite	54108-024	FLX S24 Console, 2 Universe
			-- Image picker
			-- Onscreen Guidance Tool
			-- 24 faders
			-- 1024 channels of control
<b><u>Includes:</u></b>			
1	Vari-Lite	1-262048-001	IEC Power Cable

1	Vari-Lite	5630-000078-00	FLX S24 Dust Cover
1	Vari-Lite	9820-000015-00	FLX S Series Rackmount Kit
<b>ACCLAIM LED ZOOMSPOT</b>			
9	Vari-Lite	64511-102	Acclaim LED Zoomspot, 25° - 50° , White Body
9	Vari-Lite	64511-111	Acclaim LED Zoomspot Accessory Holder, inc. Gel Frame, White
<b>ACCLAIM LED ZOOMSPOT</b>			
6	Vari-Lite	64511-002	Acclaim LED Zoomspot, 25° - 50° , Black Body
6	Vari-Lite	64511-011	Acclaim LED Zoomspot Accessory Holder, inc. Gel Frame, Black
<b>ACCLAIM LED FRESNEL</b>			
6	Vari-Lite	64511-001	Acclaim LED Fresnel, Black Body
6	Vari-Lite	64511-010	Acclaim LED Fresnel 4-leaf Barndoor, Black
<b>ACCLAIM LED CYC</b>			
5	Vari-Lite	64511-004	Acclaim LED CYC 150W, RGBL, Black body



**SOFT GOODS**

QTY	MFGR	Part #	Description
MAIN CURTAIN & BORDER RIGGING			
1	TBD	25 OZ IFR CHARISMA POLY VELOUR, UNLINED, COLOR TBD SEWN AT 50% FULLNESS	MAIN CURTAIN PAIR 9'6" (H) X 28'0" (W) EQUALS (2) PANELS 9'6" (H) X 14'0" (W) EACH
1	TBD	25 OZ IFR CHARISMA POLY VELOUR, UNLINED, COLOR TBD SEWN AT 50% FULLNESS	MAIN BORDER, 2'4" (H) X 24'0" (W)
1	ADC	ADC TRACK KIT MODEL 170 26.00 FEET WIDE X 12 FEET HIGH OVERLAP-TRACK WITH TENSION FLOOR PULLEY	
As Req	TBD	ALLOWANCE FOR RIGGING MATERIALS AS REQUIRED	
As Req	TBD	ALLOWANCE FOR SCHD40 PIPE	
As Req	TLSID	MQSB	Mega-Quick Pipe Splice 1-1/2 sch40 Black
MID BORDER & LEG RIGGING			
1	TBD	25 OZ IFR CHARISMA POLY VELOUR, UNLINED, COLOR TBD SEWN AT 50% FULLNESS	qty1 BORDER, 2'4" (H) X 24'0" (W)
2	TBD	25 OZ IFR CHARISMA POLY VELOUR, UNLINED, COLOR TBD SEWN AT 50% FULLNESS	qty2 LEG, 10'0" (H) X 4'0" (W)
1	ADC	QTY2 ROTODRAPER	
As Req	ACDM	ALLOWANCE FOR RIGGING MATERIALS AS REQUIRED	
As Req	ACDM	ALLOWANCE FOR SCHD40 PIPE	
As Req	TLSID	MQSB	Mega-Quick Pipe Splice 1-1/2 sch40 Black
REAR CYC RIGGING			
1	TBD	IFR POLY MUSLIN, SEAMLESS, SKY BLUE, SEWN AT 0% FULLNES	CYC, 10'0" (H) X 24'0" (W)
1	ADC	ADC TRACK KIT MODEL 173 24.00 FEET WIDE ONE-WAY-DRAW	
As Req	ACDM	ALLOWANCE FOR RIGGING MATERIALS AS REQUIRED	
As Req	TBD	ALLOWANCE FOR SCHD40 PIPE	
As Req	TLSID	MQSB	Mega-Quick Pipe Splice 1-1/2 sch40 Black