

**Glen Oaks Community College
Renovations to B and D Halls | 20220049
6/6/2024**

ADDENDUM NO. 2

This addendum is issued as a supplement to the plans and specifications and shall be considered an integral part of the same.

- Item: 2.01**
Location: General
Description: EPS Security is the current servicer of the college fire alarm system. System is a notifier system.
- Item: 2.02**
Location: General
Description: Basis of design for seating in the Nora Hagen Theater Room D235 has been indicated on the drawings. Please provide basis of design or equal.
- Item: 2.03**
Location: General
Description: Contractor to carry allowance for all vinyl graphics and logo's indicated on drawings. Logo on ceiling has basis of design indicated. GC to coordinate with Owner final graphics.
- Item: 2.04**
Location: Specifications: Section 09 65 66
Description: Basis of design for Thor Resi24 should be 1" thick.
- Item: 2.05**
Location: Sheet: A9.2d
Description: Roller shades are indicated by keynote 122413-3 on A9.2d. Roller shades can be found at windows in rooms D410 and D413
- Item: 2.06**
Location: Sheets; A10.4, A5.1
Description: Detail 4 on A10.4 is called out on 1/A5.1
- Item: 2.07**
Location: Sheet: A11.1b
Description: Walls in Toilet 133A should be CWT-3 similar to 131A.
- Item: 2.08**
Location: Sheet: A11.1b
Description: Changed base in Toilet 131A to be EP-1 to match other Toilet rooms.

Each contractor is responsible for incorporating all changes into their bid.

Respectfully submitted,



Jeremiah M. Hatfield, RA, LEED BD+C, Senior Architect
Design Collaborative, Inc.

SECTION 09 65 66 - RESILIENT ATHLETIC FLOORING**PART 1 - GENERAL****1.1 SUMMARY****A. Section Includes:**

1. Rubber sheet flooring.
2. Sheet vinyl flooring.

1.2 ACTION SUBMITTALS

- A. Product Data: For each type of product indicated.
- B. Samples: For each type of flooring indicated.

1.3 CLOSEOUT SUBMITTALS

- A. Maintenance data.

1.4 FIELD CONDITIONS**A. Adhesively Applied Products:**

1. Maintain temperatures during installation within range recommended in writing by manufacturer, but not less than 70 deg F or more than 95 deg F, in spaces to receive flooring 48 hours before installation, during installation, and 48 hours after installation unless longer period is recommended in writing by manufacturer.
2. After postinstallation period, maintain temperatures within range recommended in writing by manufacturer, but not less than 55 deg F or more than 95 deg F.
3. Close spaces to traffic during flooring installation.
4. Close spaces to traffic for 48 hours after flooring installation unless manufacturer recommends longer period in writing.

- B. Install flooring after other finishing operations, including painting, have been completed.

PART 2 - PRODUCTS**RUBBER SHEET FLOORING**

- A. Manufacturers: Subject to compliance with requirements, provide products by one of the following:
- B. Basis-of-Design Product: Subject to compliance with requirements, provide product indicated on Drawings or comparable product by one of the following:

1. ECORE International.
 2. Mondo America Inc.
 3. Robbins Sports Surfaces.
- C. Description: Rubber athletic flooring provided as rolled goods for adhered installation.
- D. Material: Recycled-rubber compound Rubber wear layer and rubber shock-absorbent layer, vulcanized together Insert description.
- E. Traffic-Surface Texture: Smooth.
- F. Thickness: 1 inch.
- G. Color and Pattern: As selected by Architect from manufacturer's full range.

2.2 ACCESSORIES

- A. Trowelable Leveling and Patching Compound: Latex-modified, hydraulic-cement-based formulation approved by flooring manufacturer.
- B. Adhesives: Water-resistant type recommended in writing by manufacturer for substrate and conditions indicated.
1. Adhesives shall have a VOC content of 50 g/L or less when calculated according to 40 CFR 59, Subpart D (EPA Method 24).

PART 3 - EXECUTION

3.1 PREPARATION

- A. Prepare substrates according to manufacturer's written recommendations to ensure adhesion of flooring.
- B. Concrete Substrates: Prepare according to ASTM F 710.
1. Verify that substrates are dry and free of curing compounds, sealers, and hardeners.
- C. Remove substrate coatings and other substances that are incompatible with adhesives and that contain soap, wax, oil, or silicone, using mechanical methods recommended in writing by manufacturer. Do not use solvents.
- D. Use trowelable leveling and patching compound to fill cracks, holes, and depressions in substrates.
- E. Move flooring and installation materials into spaces where they will be installed at least 48 hours in advance of installation unless manufacturer recommends a longer period in writing.
1. Do not install flooring until they are same temperature as space where they are to be installed.

- F. Sweep and vacuum clean substrates to be covered by flooring immediately before installation. After cleaning, examine substrates for moisture, alkaline salts, carbonation, and dust.
- G. Proceed with installation only after unsatisfactory conditions have been corrected.

3.2 FLOORING INSTALLATION, GENERAL

- A. Comply with manufacturer's written installation instructions.
- B. Scribe, cut, and fit flooring to butt neatly and tightly to vertical surfaces, equipment anchors, floor outlets, and other interruptions of floor surface.
- C. Extend flooring into toe spaces, door reveals, closets, and similar openings unless otherwise indicated.
- D. Maintain reference markers, holes, and openings that are in place or marked for future cutting by repeating subfloor markings on flooring. Use nonpermanent, nonstaining marking device.

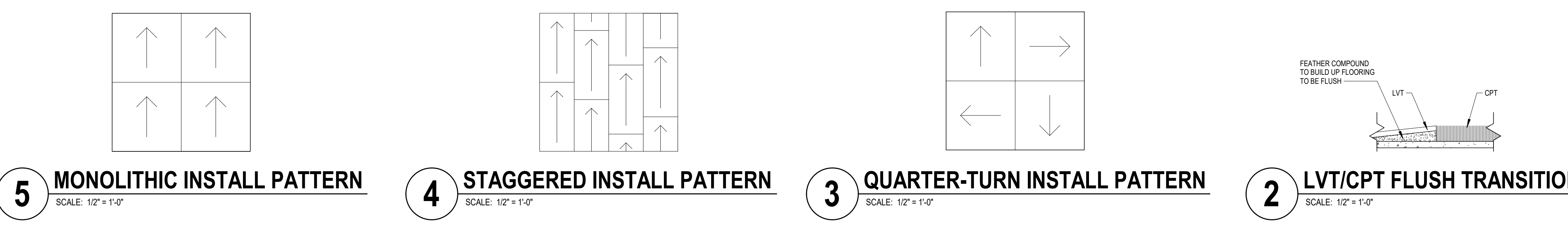
3.3 SHEET FLOORING INSTALLATION

- A. Unroll sheet flooring and allow it to stabilize before cutting and fitting.
- B. Lay out sheet flooring as follows:
 - 1. Maintain uniformity of flooring direction.
 - 2. Minimize number of seams; place seams in inconspicuous and low-traffic areas, at least 6 inches away from parallel joints in flooring substrates.
 - 3. Match edges of flooring for color shading at seams.
 - 4. Locate seams per approved Shop Drawings.
- C. Adhered Flooring: Adhere products to substrates using a full spread of adhesive applied to substrate to comply with adhesive and flooring manufacturers' written instructions.
- D. Vinyl Sheet Flooring Seams: Prepare and finish seams to produce surfaces flush with adjoining flooring surfaces.
 - 1. Heat-Welded Seams: Comply with ASTM F 1516. Rout joints and use welding bead to permanently fuse sections into a seamless flooring.

3.4 CLEANING AND PROTECTING

- A. Perform the following operations immediately after completing flooring installation:
 - 1. Remove adhesive and other blemishes from flooring surfaces.
 - 2. Sweep and vacuum flooring thoroughly.
 - 3. Damp-mop flooring to remove marks and soil after time period recommended in writing by manufacturer.
- B. Protect flooring from mars, marks, indentations, and other damage from construction operations and placement of equipment and fixtures during remainder of construction period. Use protection methods recommended in writing by manufacturer.

END OF SECTION



FINISH LEGEND

ACOUSTIC CEILING TILE
 ACT-1 ARMSTRONG, CORTEGA, ITEM NO. 770, SIZE: 24" X 24" X 5/8", EDGE: SQUARE, COLOR: WHITE

ACOUSTIC WALL PANEL
 AWP-1 CARNEGIE, XOREL PANEL, SHAPE: PLANK, SIZE: SMALL, 5' X 20", SUBSTRATE: QUIET-CORE, EDGE: BEVEL, FABRIC: LINEN 6291 S, INSTALL: QUICK GRAB WALL MOUNTED
 AWP-2 CARNEGIE, XOREL PANEL, SHAPE: PLANK, SIZE: SMALL, 5' X 20", SUBSTRATE: QUIET-CORE, EDGE: BEVEL, FABRIC: SAHARA MATTE 6099 629, INSTALL: QUICK GRAB WALL MOUNTED
 AWP-3 CARNEGIE, XOREL PANEL, SHAPE: PLANK, SIZE: SMALL, 5' X 20", SUBSTRATE: QUIET-CORE, EDGE: BEVEL, FABRIC: METEOR 6427 2016, INSTALL: QUICK GRAB WALL MOUNTED
 AWP-4 CARNEGIE, XOREL PANEL, SHAPE: PLANK, SIZE: LARGE, 10' X 20", SUBSTRATE: QUIET-CORE, EDGE: BEVEL, FABRIC: LINEN 6291 S, INSTALL: QUICK GRAB WALL MOUNTED
 AWP-5 CARNEGIE, XOREL PANEL, SHAPE: PLANK, SIZE: LARGE, 10' X 20", SUBSTRATE: QUIET-CORE, EDGE: BEVEL, FABRIC: SAHARA MATTE 6099 629, INSTALL: QUICK GRAB WALL MOUNTED

CARPET
 CPT-1 MOHAWK, COLLECTION: NUTOPIA MATRIX, STYLE: URBAN TERRAIN GT413, COLOR: FUSION 969, SIZE: 12' X 36", INSTALL: STAGGER
 CPT-2 SHAW, COLLECTION: COLOR AT WORK II, STYLE: SATURATE ST109, COLOR: VIVIDIAN 07396, SIZE: 9' X 36", INSTALL: STAGGER
 CPT-3 SHAW, COLLECTION: IN SYNC, STYLE: COMPANION TILE ST352, COLOR: FUSE 5815, SIZE: 24" X 24", INSTALL: QUARTER-TURN
 CPT-4 SHAW, COLLECTION: COLOR FRAME AND COLOR FORM, STYLE: COLOR FRAME TILE ST611, COLOR: DISAPPEAR 81557, INSTALL: MONOLITHIC

CERAMIC WALL TILE
 CWT-1 DALTILE, COLLECTION: CINEMATIC, STYLE: PICKET, COLOR: CLASSIC GREY CM41, SIZE: 2' X 9", MESH MOUNTED, GROUT: MAPEI, COLOR: 09 GRAY, UNSANDED
 CWT-2 DALTILE, COLLECTION: SADDLE BROOK, COLOR: GRAVEL ROAD SD16, SIZE: 6' X 36", INSTALL: STAGGER, GROUT: MAPEI, COLOR: 09 GRAY, UNSANDED
 CWT-3 DALTILE, COLLECTION: CONCRETE MASONRY, COLOR: ARTISAN GREY P036, SIZE: 16' X 32", INSTALL: 33% OFFSET, GROUT: MAPEI, COLOR: 107 IRON, UNSANDED
 CWT-4 BASIS OF DESIGN: OTTIMO CERAMICS, STYLE: DASH, COLOR: TBD, SIZE: 16' X 48", INSTALL: VERTICAL STACKED, GROUT: MAPEI, COLOR: TBD, UNSANDED

CORNER GUARD
 CG-1 INPRO, 150D HIGH IMPACT END WALL PROTECTOR, 8"H, MOUNTED TOP OF BASE, COLOR: DOVE GRAY 0108
 CG-2 INPRO, 150 HIGH IMPACT CORNER GUARD, 8"H, MOUNTED TOP OF BASE, COLOR: DOVE GRAY 0108

LUXURY VINYL TILE
 LVT-1 PATCRAFT, COLLECTION: LINOCUT 1600, COLOR: CHSEL 00550, SIZE: 9' X 36", INSTALL: STAGGER
 LVT-2 SHAW, COLLECTION: COMPOUND + CAST, STYLE: COMPOUND 5.0 4077V, COLOR: PATINA 7405, SIZE: 24" X 24", INSTALL: QUARTER-TURN

PAINT
 PNT-1 SHERWIN WILLIAMS, COLOR: SW7650 ELLIE GRAY, FINISH: EGGSHELL
 PNT-2 SHERWIN WILLIAMS, COLOR: GLEN OAKS BONE WHITE, FINISH: EGGSHELL
 PNT-3 GLEN OAKS GREEN, PANTONE# 1235C, FINISH: EGGSHELL
 PNT-4 GLEN OAKS YELLOW, PANTONE# 7484C, FINISH: EGGSHELL
 PNT-5 SHERWIN WILLIAMS, COLOR: SW7005 PURE WHITE, FINISH: FLAT
 PNT-6 PPG, COLOR: 1009-6, FINISH: SEMI-GLOSS

PLASTIC LAMINATE
 PL-1 FORMICA, COLOR: 5787-NG TAMPE WALNUT, FINISH: NATURAL GRAIN
 PL-2 ARBORITE, COLOR: P407 MONOLITH, FINISH: VL
 PL-3 PIONITE, COLOR: A6801SD JUMPING IN PUDDLES, FINISH: TEXTURED/SUEDE

PRIVACY CURTAIN
 PC-1 INPRO, STYLE: FRAMEWORK, COLOR: PLATINUM, 64" LONG WITH 20" LONG SNOW MESH CURTAIN HEADING ABOVE

RUBBER
 RB-1 TARKETT, TRADITIONAL 4" BASE, COLOR: 20 CHARCOAL

RUBBER FLOORING
 RF-1 THOR RUBBER FLOORING, STYLE: RESI24, COLOR: TBD, 48" WIDE ROLLED GOODS

SEALED CONCRETE
 SC-1 SHERWIN WILLIAMS, ARMORSEAL 1K, WATER-BASED URETHANE FLOOR ENAMEL, FINISH: CLEAR 865C775

SHEET VINYL
 SV-1 MANNINGTON, COLLECTION: PARADIGM II, STYLE: FLOW, COLOR: PURPOSE PD316

SOLID SURFACE
 SS-1 CORIAN, COLOR: COSMOS PRIMA
 SS-2 CORIAN, COLOR: EVEREST

STAIR COMPONENT
 STC-1 MANNINGTON, DOUBLE UNDERCUT CARPET STAIR NOSING 565, COLOR: 217 CHARCOAL

WALK-OFF MAT
 WOM-1 PATCRAFT, COLLECTION: WALK FORWARD, STYLE: CONNECTING 05355, COLOR: PATHWAY 00580, SIZE: 24" X 24", INSTALL: QUARTER-TURN

WOOD
 WD-1 PLAIN SLICED MAPLE STAINED TO MATCH EXISTING WOOD

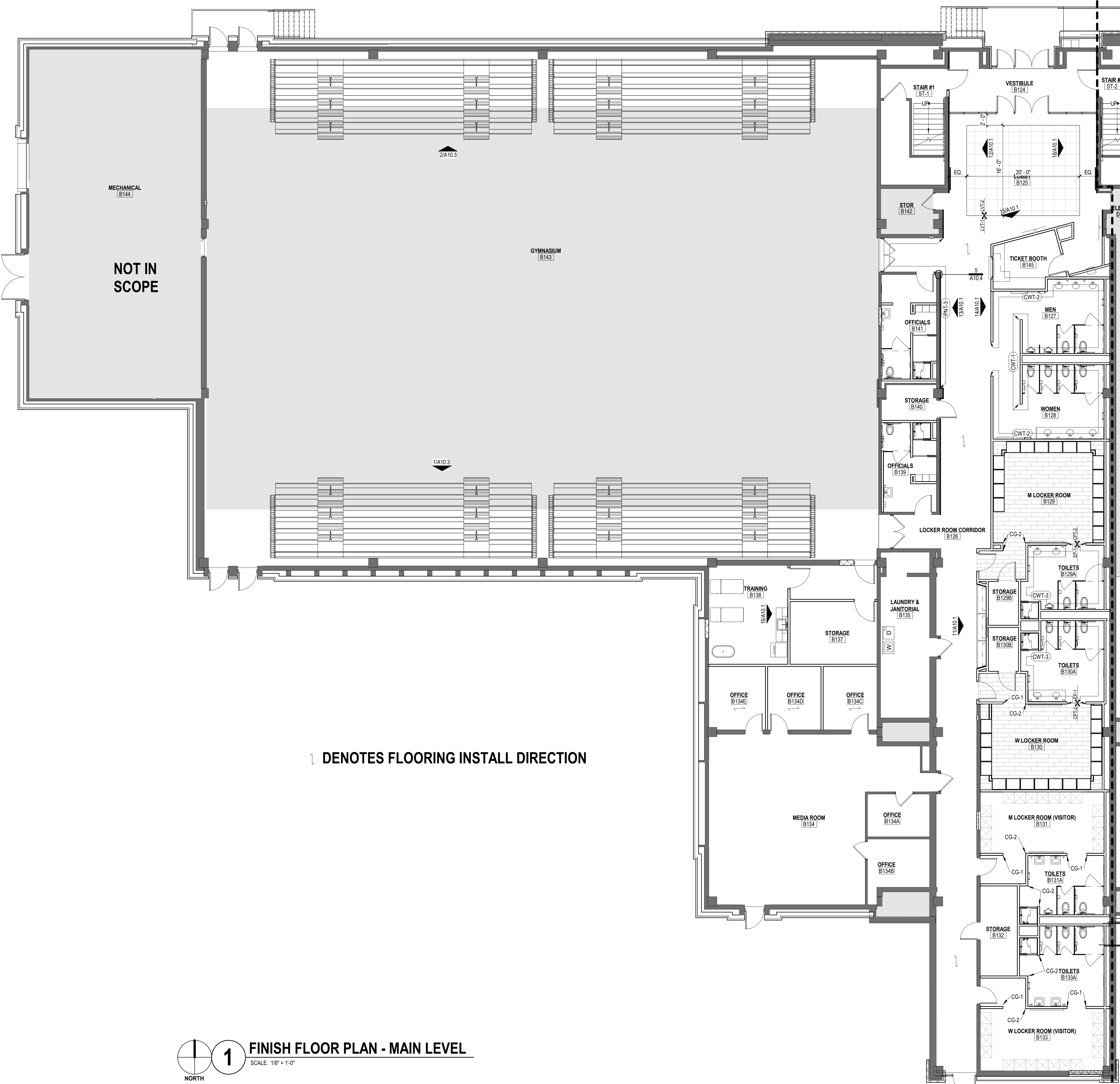
WOOD CEILING
 WOC-1 ARMSTRONG, WOODWORKS LINEAR VENEERED PLANKS, ITEM NO: 64680W1, SIZE: 5-1/4" X 96" X 3/4", FINISH: TBD

GENERAL ROOM FINISH NOTES

- SEE "GENERAL" SHEETS IN THE FRONT OF THE WORKING DRAWING SET FOR DEFINITION OF ABBREVIATIONS
- THE SCHEDULED MATERIALS AND FINISHES SHALL NOT BE ORDERED OR INSTALLED BEFORE THE CONTRACTOR'S ACTUAL COLOR SAMPLE SUBMITTALS HAVE BEEN APPROVED AS CALLED FOR ON THE DRAWINGS AND IN THE SPECIFICATIONS
- ALL FLOOR FINISH TRANSITIONS TO OCCUR IN THE MIDDLE OF DOOR FRAME, UNLESS NOTED OTHERWISE ON FLOOR FINISH PLAN
- PROVIDE JOINTS/SEALS/SLIMLINE RUBBER TRANSITIONS STRIP WHEREVER DIFFERING FLOOR MATERIALS MEET, UNLESS NOTED OTHERWISE
- ALL HOLLOW METAL DOOR FRAMES AND WINDOW FRAMES TO BE PAINTED PNT-4 WITH ZERO VOC ACRYLIC BASED PAINT WITH A SEMI-GLOSS FINISH
- BASIS OF DESIGN: ALL SOLID WOOD DOORS TO BE MASONITE DOOR SYSTEMS, SPORES: MATCH EXISTING, CUT: MATCH EXISTING, STAIN: MATCH EXISTING
- REFER TO A10 SERIES FOR ADDITIONAL WALL FINISH INFORMATION
- BOTTOM OF ALL CVP BOARD CEILING TO BE PAINTED PNT-6 WITH FLAT FINISH, UNLESS NOTED OTHERWISE ON REFLECTED CEILING PLAN
- FACE OF ALL BULKHEADS TO BE PAINTED PNT-5, UNLESS NOTED OTHERWISE ON REFLECTED CEILING PLAN
- ALL TOILET PARTITIONS TO BE COLOR-THRU PHENOLIC
- REFER TO FLOOR FINISH PLAN FOR FLOORING INSTALL DIRECTION
- ALL CASEWORK HARDWARE TO BE WIRE FILL UNLESS NOTED OTHERWISE
- PROVIDE SCHLUTER JOLLY TRIM PIECE WITH EB FINISH AT ALL EXPOSED TILE EDGES
- PROVIDE SIVT CONTRACT MANUAL ROLLER SHADES ON WINDOWS NOTED ON PLANS, SHADE FABRIC: SHEAR WEAVE 2701
- FLOORING DIRECTION INDICATED ON PLANS

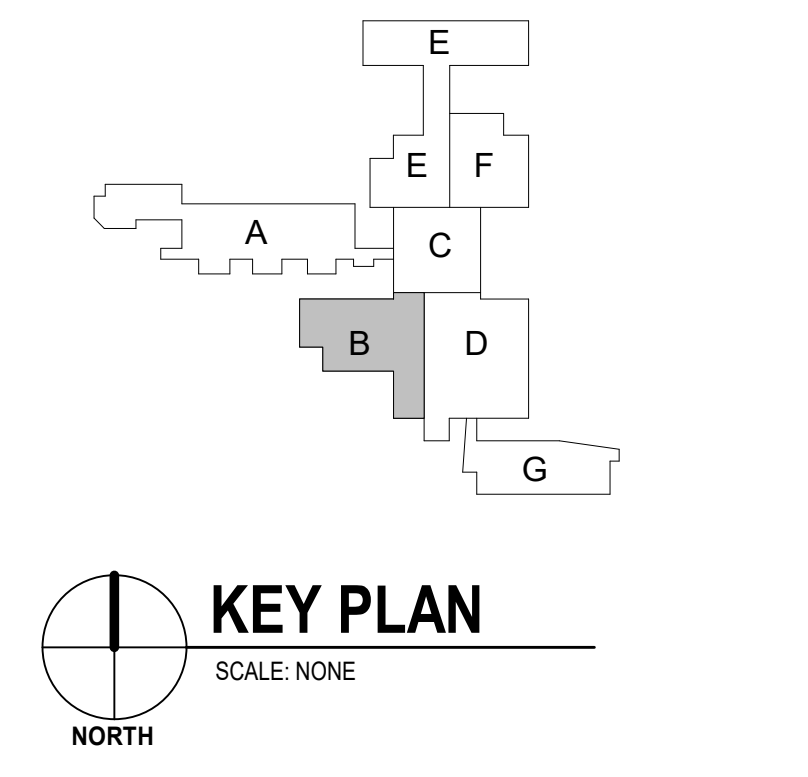
FINISH COMMENTS

- NO FINISH WORK
- RUBBER BASE TO BE INSTALLED ON NEW WALL TO MATCH EXISTING
- CERAMIC TILE TO BE INSTALLED FLOOR TO CEILING; NO RUBBER BASE TO BE INSTALLED ON WALL
- CPT-4 TO BE INSTALLED AS NEEDED WHERE NEW WINDOWS HAVE BEEN INSTALLED
- FINISH WORK SHOWN ON A10.3
- AWP SHOWN ON A10.2 TO INCLUDED IN ALTERNATE #3
- ALTERNATE #2A CEILING TO BE ACT-1
- WORK SHOWN IN FINISH SCHEDULE TO BE INCLUDED IN ALTERNATE #1
- ALTERNATE #2B CEILING TO BE WOC-1
- TREADS AND RISERS TO RECEIVE CPT-1 WITH STC-1 NOSING



FINISH SCHEDULE - 01 MAIN FLOOR

#	ROOM	FLOOR	BASE	WALLS				CEILING	COMMENTS
				NORTH	SOUTH	EAST	WEST		
B124	VESTIBULE	WOM-1	RB-1	PNT-1	PNT-1	PNT-1	PNT-1	ACT-1	
B125	LOBBY	LVT-1, LVT-2	RB-1	PNT-1	PNT-1	PNT-1	PNT-1	ACT-1	
B126	LOCKER ROOM CORRIDOR	LVT-1	RB-1	PNT-1	PNT-1	PNT-1	PNT-1	ACT-1	
B127	MEN	LVT-1	CWT-2	CWT-2	CWT-2	CWT-2	CWT-2	ACT-1	3
B128	WOMEN	LVT-1	CWT-2	CWT-2	CWT-2	CWT-2	CWT-2	ACT-1	3
B129	M LOCKER ROOM	CPT-2	RB-1	PNT-1	PNT-1	PNT-1	PNT-1	ACT-1	
B129A	TOILETS	EP-1	EP-1	CWT-3	CWT-3	CWT-3	CWT-3	ACT-1	3
B129B	STORAGE	SC-1	RB-1	PNT-1	PNT-1	PNT-1	PNT-1	ACT-1	
B130	W LOCKER ROOM	CPT-2	RB-1	PNT-1	PNT-1	PNT-1	PNT-1	ACT-1	
B130A	TOILETS	EP-1	EP-1	CWT-3	CWT-3	CWT-3	CWT-3	ACT-1	3
B130B	STORAGE	SC-1	RB-1	PNT-1	PNT-1	PNT-1	PNT-1	ACT-1	
B131	M LOCKER ROOM (VISITOR)	EP-1	EP-1	PNT-1	PNT-1	PNT-1	PNT-1	ACT-1	
B131A	TOILETS	EP-1	EP-1	CWT-3	CWT-3	CWT-3	CWT-3	ACT-1	3
B132	STORAGE	SC-1	RB-1	PNT-1	PNT-1	PNT-1	PNT-1	ACT-1	
B133	W LOCKER ROOM (VISITOR)	EP-1	EP-1	PNT-1	PNT-1	PNT-1	PNT-1	ACT-1	
B133A	TOILETS	EP-1	EP-1	CWT-3	CWT-3	CWT-3	CWT-3	ACT-1	3
B134C	OFFICE	CPT-2	RB-1	PNT-1	PNT-1	PNT-1	PNT-1	ACT-1	
B134D	OFFICE	CPT-2	RB-1	PNT-1	PNT-1	PNT-1	PNT-1	ACT-1	
B134E	OFFICE	CPT-2	RB-1	PNT-1	PNT-1	PNT-1	PNT-1	ACT-1	
B135	LAUNDRY & JANITORIAL	SC-1	--	--	--	--	--	--	
B136	CORRIDOR	SC-1	RB-1	PNT-1	PNT-1	PNT-1	PNT-1	ACT-1	
B137	STORAGE	SC-1	RB-1	PNT-1	PNT-1	PNT-1	PNT-1	EXPOSED	
B138	TRAINING	EP-1	EP-1	PNT-1	PNT-1	PNT-1	PNT-1	ACT-1	
B139	OFFICIALS	EP-1	EP-1	PNT-1	PNT-1	PNT-1	PNT-1	ACT-1	
B140	STORAGE	SC-1	RB-1	PNT-1	PNT-1	PNT-1	PNT-1	ACT-1	
B141	OFFICIALS	EP-1	EP-1	PNT-1	PNT-1	PNT-1	PNT-1	ACT-1	
B143	GYMNASIUM	--	--	--	--	--	--	--	5
B145	TICKET BOOTH	LVT-1	RB-1	PNT-1	PNT-1	PNT-1	PNT-1	ACT-1	
D233	ATHLETICS	CPT-1	RB-1	PNT-1	PNT-1	PNT-1	PNT-1	ACT-1	
D233A	OFFICE	CPT-1	RB-1	PNT-1	PNT-1	PNT-1	PNT-1	ACT-1	
D235	NORA HAGEN THEATER	CPT-1	EXIST. TO REMAIN	PNT-2	PNT-2	PNT-2	PNT-2	ACT-1	6, 7, 8, 10
D239	NURSING LAB 1	--	--	--	--	--	--	--	4
D242	NURSING LAB 2	--	--	--	--	--	--	--	4
D245	CLASSROOM	CPT-3	RB-1	PNT-2	PNT-2	PNT-2	PNT-2	ACT-1	
D248	STORAGE	SC-1	RB-1	PNT-2	PNT-2	PNT-2	PNT-2	ACT-1	
D250	CLASSROOM	CPT-3	RB-1	PNT-2	PNT-2	PNT-2	PNT-2	ACT-1	
ST-1	STAIR #1	EXIST. TO REMAIN	WD-1	CWT-4, PNT-1	CWT-4, PNT-1	CWT-4, PNT-1	CWT-4, PNT-1	ACT-1	
ST-2	STAIR #2	EXIST. TO REMAIN	WD-1	CWT-4, PNT-1	CWT-4, PNT-1	CWT-4, PNT-1	CWT-4, PNT-1	ACT-1	



1 FINISH FLOOR PLAN - MAIN LEVEL
 SCALE: 1/8" = 1'-0"
 NORTH

6/6/2024 6:22:44 AM