

**Addendum D1**

re: **DUNELAND SCHOOL CORPORATION**  
**Chesterton Middle School Demolition**  
513001.00

date: **June 7, 2024**

This Addendum forms a part of the Contract Documents for the above-referenced project and is issued in accordance with the Instructions to Bidders. Acknowledge receipt of this addendum by inserting its number in the space provided in the bid form.

ITEM	LOCATION	DESCRIPTION
A1.01	DRAWING A1.21 Demolition Elevations and/or Sections <i>(Drawing Reissued)</i>	<b><u>CLARIFICATION:</u></b> Extent of foundation wall waterproofing is now depicted on Partial West Elevation. Coverage is from the floor line down to the top of existing footings.

Submitted by:  
**The Moake Park Group, Inc.**

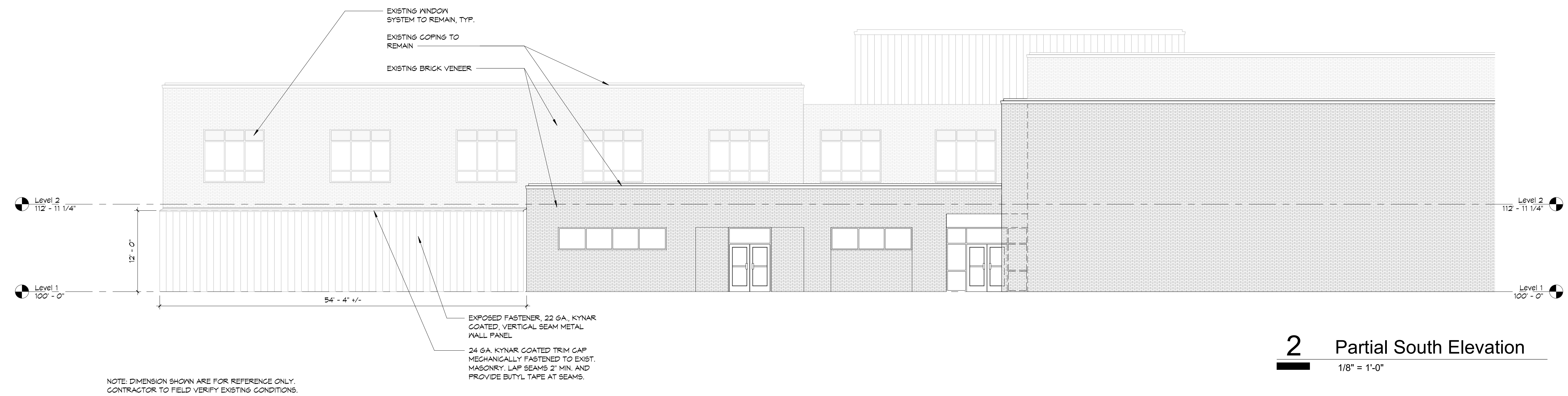


Jeff E. Schroeder, AIA  
President

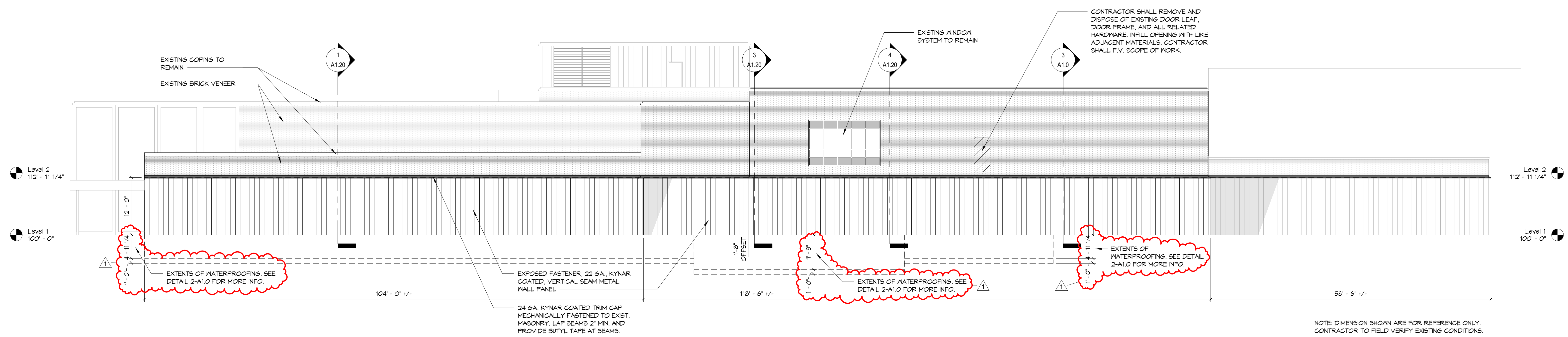
attachments: ***(Reissued Drawing)*** A1.21 Demolition Elevations and/or Sections

copies: All Plan Holders  
513001/670





**2** Partial South Elevation  
 1/8" = 1'-0"



**1** Partial West Elevation  
 1" = 10'-0"

A PROJECT FOR:



Duneland School Corporation  
 Chesterton Middle School Demolition

The contents, ideas, plans, and details as shown on this document are the sole property of Moake Park Group, Inc. and were created, developed, and prepared for the use on this specific project. None of the contents, ideas, plans, and details shall be used by any person, firm, or corporation for any purpose whatsoever without expressed written consent of Moake Park Group, Inc. The Owner shall be permitted to reproduce copies for information and reference in connection with this project.

mark	date	description
1	6/7/2024	Addendum #1

Demolition Elevations and/or Sections

date: June 3, 2024  
 project: 513001  
 coordinator: JES  
 drawn: CDH  
 checked: A1.21