



## RUSH COUNTY SCHOOL CORPORATION

### Rushville Elementary School Renovations

#### ADDENDUM NO. 7

To: ALL BIDDERS OF RECORD

---

Date of Issue: **June 19<sup>th</sup>, 2024**

This Addendum is issued before Award of Contract to inform the Bidders of revisions to the Bidding Documents, of which includes Multiple Prime Contract Bids.

All requirements contained in the Bidding Documents shall apply to this Addendum. The general character of the work called for in this Addendum shall be the same as originally set forth in the applicable portions of the Bidding Documents for similar work, unless otherwise specified under this Addendum. All incidental work necessitated by this Addendum, as required to complete the work, shall be included in the bid even though not particularly mentioned in this Addendum.

This Addendum modifies the Bidding and Contract Requirements of the specifications and drawings dated May 2024 for bidding. This Addendum is hereby made a part of the Bidding Documents and shall be included in the Contract.

Acknowledge receipt of this Addendum in the appropriate space on the Bid Form. Failure to do so may subject the Bidder to disqualification.

---

All Alternates shall be bid as indicated by section 00 42 00: Supplementary Bid Form and section 01 23 00: Alternates. Any conflicting discrepancies shall be superseded by these two specification sections (00 42 00 and 01 23 00).

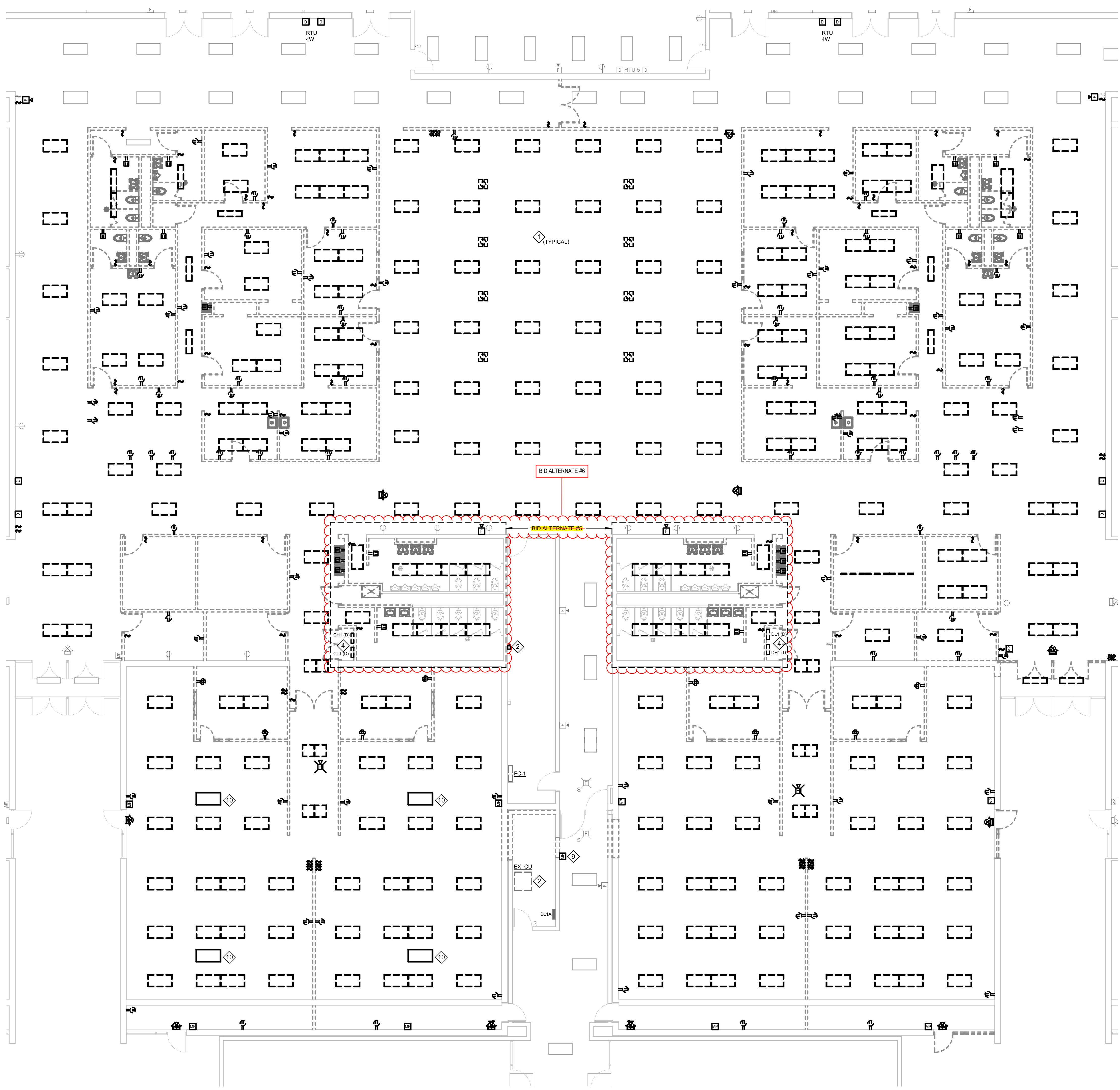
#### **DRAWING(S) CLARIFICATIONS**

- ED102 – ELECTRICAL DEMOLITION FIRST FLOOR PLAN – UNIT C
- EL102 – ELECTRICAL FIRST FLOOR LIGHTING PLAN – UNIT C
- EP103 – ELECTRICAL FIRST FLOOR POWER PLAN – UNIT C
- EF103 – ELECTRICAL FIRST FLOOR FIRE ALARM PLAN – UNIT C

---

**END OF ADDENDUM 7**

---



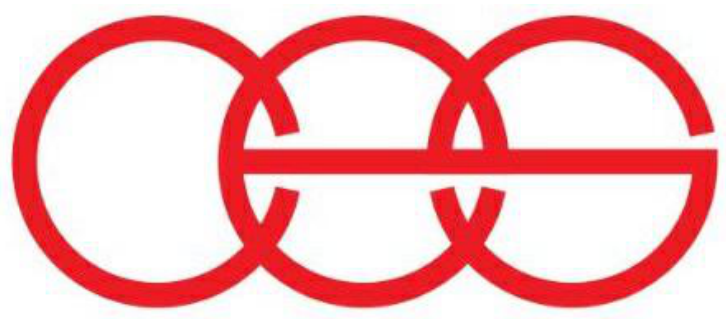
**GENERAL DEMOLITION NOTES**

- A REFER TO ELECTRICAL SYMBOLS AND ABBREVIATIONS SHEET E-001 FOR ADDITIONAL INFORMATION.
- B THIS DRAWING REPRESENTS INFORMATION OBTAINED FROM ORIGINAL CONTRACT DRAWINGS AND FIELD SURVEY. VERIFY BY ON-SITE OBSERVATION THE EXTENT OF WORK PRIOR TO SUBMISSION OF BID.
- C CONTRACT DOCUMENTS CONSIST OF BOTH PROJECT MANUAL AND DRAWINGS AND ARE MEANT TO BE COMPLEMENTARY. ANYTHING APPEARING ON EITHER MUST BE EXECUTED THE SAME AS IF SHOWN ON BOTH.
- D THOROUGHLY EXAMINE THE WORK OF OTHER CONTRACTORS AND PROPERLY INSTALL ALL WORK REQUIRED FOR THE PROJECT.
- E THE OWNER HOLDS RIGHT OF FIRST REFUSAL FOR ALL DEMOLISHED ELECTRICAL EQUIPMENT.
- F ALL ELECTRICAL ITEMS SHOWN WITH LIGHT LINEWORK ARE EXISTING TO REMAIN COMPLETE.
- G REMOVE ALL ELECTRICAL ITEMS SHOWN WITH BOLD/DASHED LINEWORK COMPLETE.
- H COORDINATE AND DISCONNECT ALL ARCHITECTURAL, MECHANICAL, AND PLUMBING EQUIPMENT AS NOTED BY OTHERS. REMOVE ALL ASSOCIATED ELECTRICAL EQUIPMENT, RACEWAYS, CONDUCTORS, ETC. SERVING THE EQUIPMENT.
- I PROVIDE ALL CUTTING AND PATCHING AS REQUIRED FOR THE REMOVAL OF EXISTING ELECTRICAL EQUIPMENT. REFER TO SPECIFICATIONS.
- J PROVIDE A BLANK COVERPLATE FOR ALL EXISTING WALL OPENINGS WHERE ELECTRICAL EQUIPMENT HAS BEEN REMOVED AND NOT REPLACED. IN AREAS RECEIVING NEW WALL TREATMENTS, PATCH THE EXISTING OPENING.
- K REFER TO A, M, AND P-SERIES DRAWINGS FOR AREAS WITH ABOVE CEILING WORK AND/OR CEILING REMOVAL. TEMPORARILY SUPPORT ALL ELECTRICAL DEVICES, FIXTURES, ETC. AS REQUIRED. RE-INSTALL ELECTRICAL ITEMS FOLLOWING THE COMPLETION OF WORK IN THE NEW OR EXISTING CEILINGS.
- L PROVE A COMPLETE TEST OF FIRE ALARM SYSTEM PRIOR TO STARTING DEMOLITION. SUBMIT COMPLETE TEST RESULTS TO OWNER AND ENGINEER.

**DEMOLITION PLAN NOTES**

- 1 MAINTAIN CIRCUITS THAT SERVED THIS AREA FOR REUSE.
- 2 DISCONNECT POWER CONNECTION TO MECHANICAL EQUIPMENT. REMOVE CONDUIT AND CONDUCTORS BACK TO SOURCE.
- 3 DISCONNECT POWER CONNECTION TO MECHANICAL EQUIPMENT FOR RECONNECTION.
- 4 DISCONNECT POWER CONNECTION TO PANELBOARD. REMOVE CONDUIT AND CONDUCTORS BACK TO SOURCE. REMOVE FUSES. CLEAN AND LUBRICATE FUSED DISCONNECT. MAINTAIN EXISTING LOADS THAT REMAIN FOR RECONNECTION.
- 5 BID ITEMS ON THIS SHEET AS AN ALTERNATE.
- 6 MAINTAIN BACK BOX AND CONDUIT. REMOVE RECEPTACLE AND CONDUCTORS. REMOVE CONDUIT FROM ABOVE CEILING TO PANELBOARD.
- 7 REMOVE POWER CONNECTION TO BOILER. REMOVE CONDUIT AND CONDUCTORS BACK TO SOURCE.
- 8 MAINTAIN SWITCH LEG LIGHTING CONTROLS FOR CONNECTION TO NEW SWITCHES.
- 9 SALVAGE FIRE ALARM DEVICE FOR RELOCATION.
- 10 SALVAGE ENERGY HARNESS ACTIVE AIRFLOW UV-C FIXTURE FOR RELOCATION.
- 11 SALVAGE ENERGY HARNESS ACTIVE AIRFLOW UV-C FIXTURE FOR RELOCATION. MAINTAIN CIRCUIT FOR RECONNECTION.

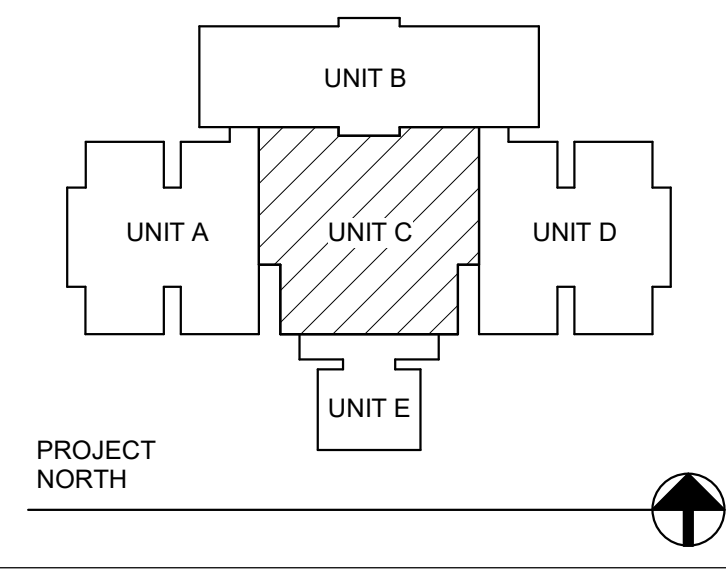
**1 ELECTRICAL DEMOLITION FIRST FLOOR PLAN - UNIT C**  
1/8" = 1'-0"



creative engineering solutions  
mechanical • electrical • plumbing  
201 S Rural St., Suite 210  
Indianapolis, IN 46201-463-777-8182  
www.creativeng.net

**ADDENDUM # 7 - ISSUED 06/19/2024**

#	Date	Description
---	------	-------------



**VPS ARCHITECTURE**  
528 Main Street - Suite 400  
905 North Capitol Avenue - Suite 100  
PH: (812) 423-7729  
Evansville, Indiana 47708  
Indianapolis, Indiana 46204  
www.VPSARCH.com

STRUCTURAL: ENGINEERS: CES

Project Name:  
**RENOVATIONS TO RUSHVILLE ELEMENTARY SCHOOL**

Drawing Title:  
**ELECTRICAL DEMOLITION FIRST FLOOR PLAN - UNIT C**

	Client Project No:	
	VPS Project No:	<b>2023021.00</b>
	Project Issue Date:	<b>05/03/24</b>
	Drawing No:	<b>ED102</b>



**GENERAL FIRE ALARM NOTES**

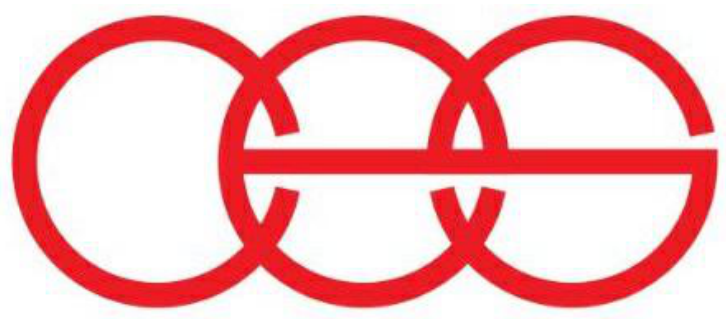
- A REFER TO ELECTRICAL SYMBOLS AND ABBREVIATIONS SHEET E-001 FOR ADDITIONAL INFORMATION.
- B PROVIDE A COMPLETE TEST OF FIRE ALARM SYSTEM UPON COMPLETION OF CONSTRUCTION. SUBMIT COMPLETE TEST RESULTS TO OWNER AND ENGINEER.
- C FIRE ALARM SYSTEM IS A DELEGATED DESIGN AND STATE SUBMISSION.

**FIRE ALARM PLAN NOTES**

- 1 BID ITEMS ON THIS SHEET AS AN ALTERNATE.
- 2 RELOCATED FIRE ALARM DEVICE. EXTEND WIRING TO NEW LOCATION.
- 3 ALL NEW DEVICES SHALL BE CONNECTED TO NEW FIRE ALARM CONTROL PANEL. PROVIDE A CONNECTION TO EXISTING FACP LOCATED IN UNIT B.
- 4 EXISTING FIRE ALARM PANEL TO REMAIN. PROVIDE CONNECTION FROM NEW FIRE ALARM CONTROL PANEL LOCATED IN UNIT C.



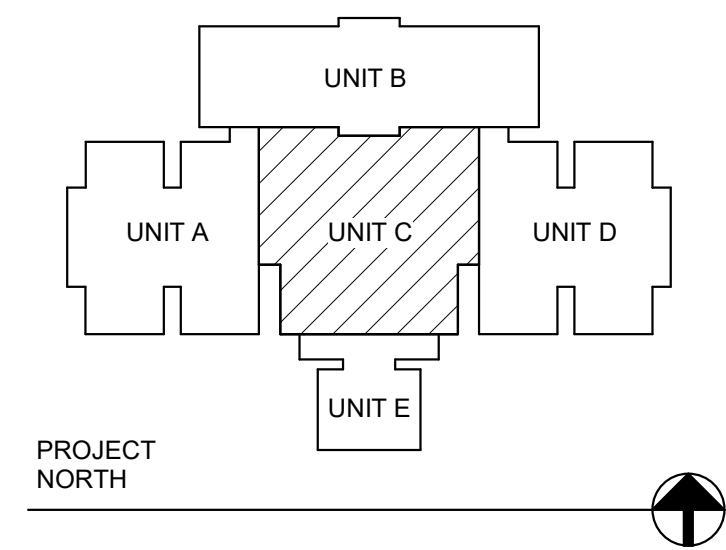
**1 ELECTRICAL FIRST FLOOR FIRE ALARM PLAN - UNIT C**  
1/8" = 1'-0"



creative engineering solutions  
mechanical • electrical • plumbing  
201 S Rural St., Suite 210  
Indianapolis, IN 46201 • 463-777-8182  
www.creativeng.net

**ADDENDUM # 7 - ISSUED 06/19/2024**

#	Date	Description
---	------	-------------



**VPS ARCHITECTURE**  
528 Main Street - Suite 400  
905 North Capital Avenue - Suite 100  
PH: (812) 423-7729

Evansville, Indiana 47708  
Indianapolis, Indiana 46204  
www.VPSARCH.com

STRUCTURAL: ENGINEERS: CES

Project Name:  
**RENOVATIONS TO RUSHVILLE ELEMENTARY SCHOOL**

Drawing Title:  
**ELECTRICAL FIRST FLOOR FIRE ALARM PLAN - UNIT C**

	Client Project No:	
	VPS Project No:	<b>2023021.00</b>
	Project Issue Date:	<b>05/03/24</b>
	Drawing No:	<b>EF103</b>

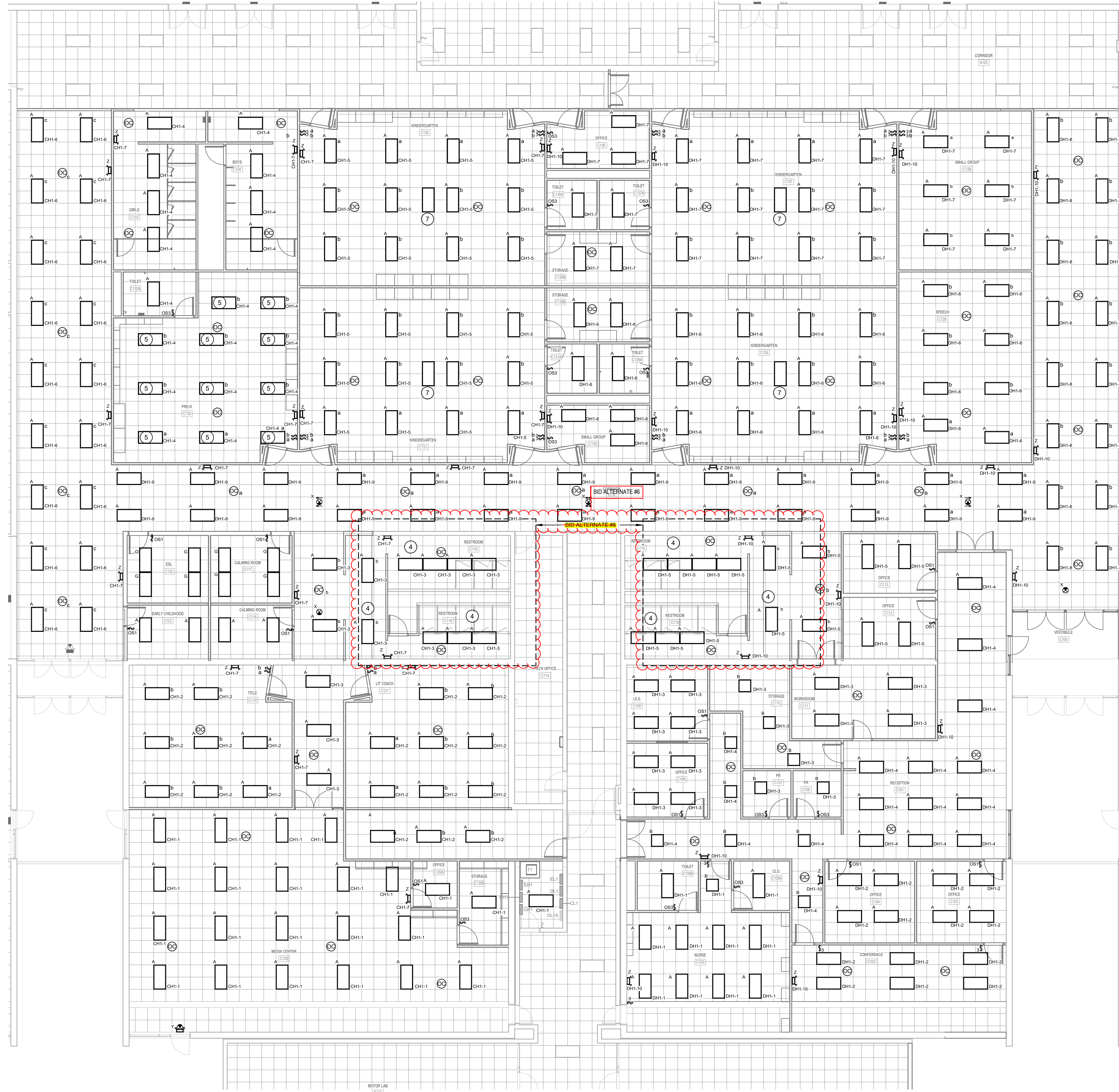


**GENERAL LIGHTING NOTES**

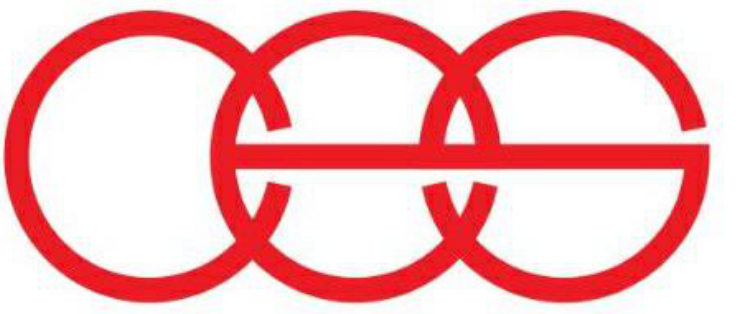
- A REFER TO ELECTRICAL SYMBOLS AND ABBREVIATIONS SHEET E-001 FOR ADDITIONAL INFORMATION.
- B CONNECT EXIT SIGNS AND EMERGENCY LIGHT FIXTURES TO EXISTING EXIT AND EMERGENCY LIGHTING CIRCUITS IN THIS AREA.

**LIGHTING PLAN NOTES**

- 1 CONNECT LIGHTING TO CIRCUIT THAT SERVED THIS AREA.
- 2 BID ITEMS ON THIS SHEET AS AN ALTERNATE.
- 3 BID AS ALTERNATE. PROVIDE ELECTRICAL DEVICES AND COVER PLATES IN ROOM.
- 4 BID ITEMS AS AN ALTERNATE.
- 5 PROVIDE LED FLAT PANEL THAT IS SIMILAR.
- 6 CONNECT NEW SWITCHES TO SWITCH LEG CONTROLS THAT WERE MAINTAINED DURING DEMOLITION.
- 7 INSTALL ENERGY HARNESS ACTIVE AIRFLOW UV-C FIXTURE THAT WAS SALVAGED DURING DEMOLITION. CONNECT TO LIGHTING CIRCUIT IN THIS ROOM AHEAD OF SWITCHING.
- 8 INSTALL ENERGY HARNESS ACTIVE AIRFLOW UV-C FIXTURE THAT WAS SALVAGED DURING DEMOLITION. CONNECT TO CIRCUIT THAT WAS MAINTAINED DURING DEMOLITION.



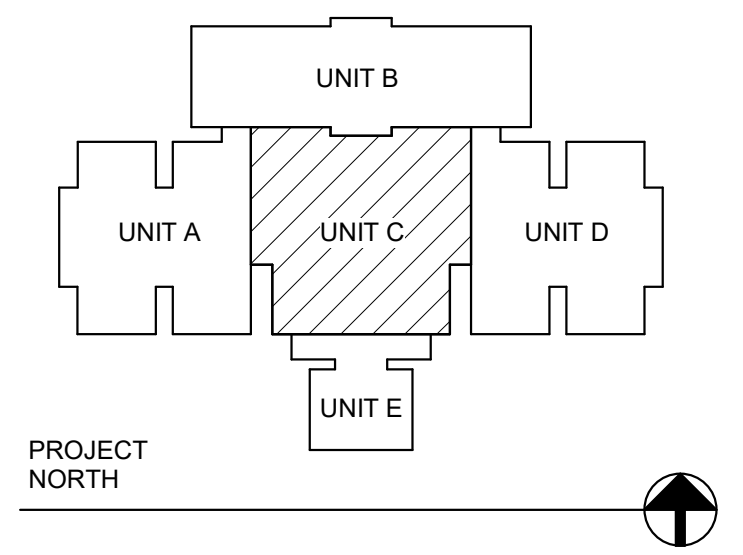
**1 ELECTRICAL FIRST FLOOR LIGHTING PLAN - UNIT C**  
1/8" = 1'-0"



creative engineering solutions  
mechanical • electrical • plumbing  
201 S Rural St., Suite 210  
Indianapolis, IN 46201-463-777-8182  
www.creativeng.net

**ADDENDUM # 7 - ISSUED 06/19/2024**

#	Date	Description
---	------	-------------



**VPS ARCHITECTURE**  
528 Main Street - Suite 400  
905 North Capital Avenue - Suite 100  
PH: (812) 423-7729  
Evansville, Indiana 47708  
Indianapolis, Indiana 46204  
www.VPSARCH.com

STRUCTURAL: ENGINEERS: CES

Project Name:  
**RENOVATIONS TO RUSHVILLE ELEMENTARY SCHOOL**

Drawing Title:  
**ELECTRICAL FIRST FLOOR LIGHTING PLAN - UNIT C**

	Client Project No:	
	VPS Project No:	2023021.00
	Project Issue Date:	05/03/24
	Drawing No:	EL102

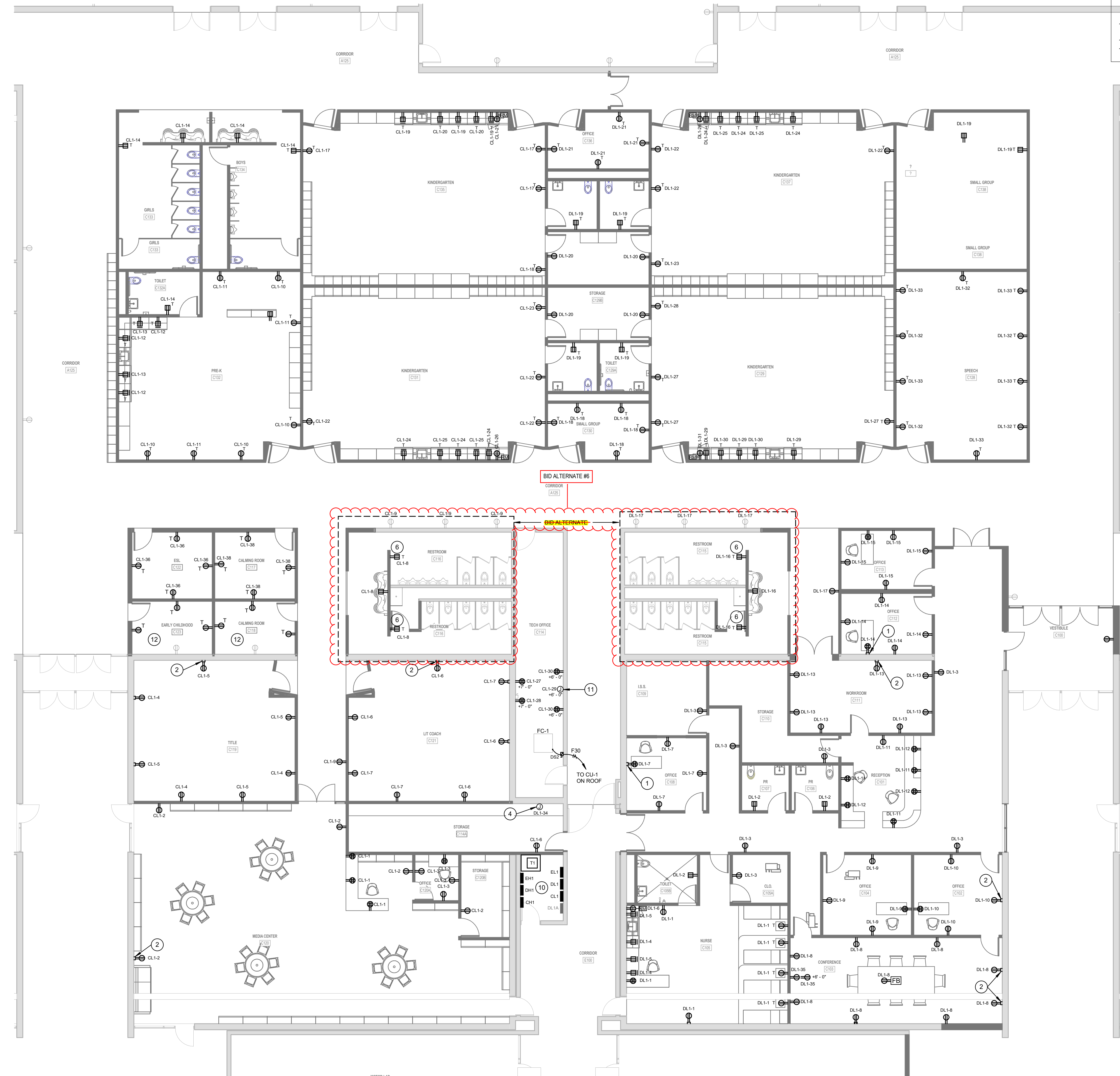


**GENERAL POWER NOTES**

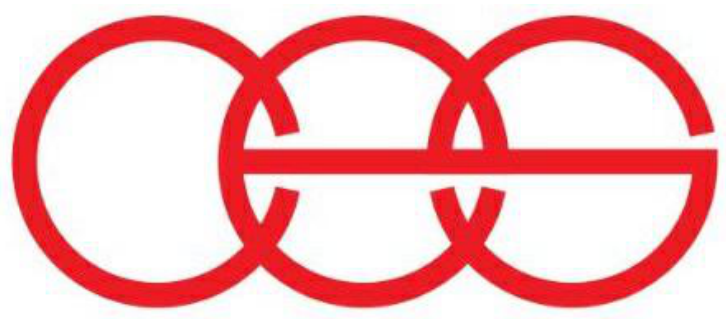
A REFER TO ELECTRICAL SYMBOLS AND ABBREVIATIONS SHEET E-001 FOR ADDITIONAL INFORMATION.

**POWER PLAN NOTES**

- 1 PROVIDE DUAL CHANNEL RACEWAY.
- 2 PROVIDE SINGLE CHANNEL RACEWAY.
- 3 BID ITEMS ON THIS SHEET AS AN ALTERNATE.
- 4 120V CONNECTION FOR TEMPERATURE CONTROL PANEL. COORDINATE EXACT LOCATION WITH DIVISION 23 CONTRACTOR.
- 5 BID AS ALTERNATE. PROVIDE ELECTRICAL DEVICES AND COVER PLATES IN ROOM.
- 6 BID ITEMS AS AN ALTERNATE.
- 7 CONNECT TO EXISTING RECEPTACLE CIRCUIT IN CORRIDOR.
- 8 COORDINATE RECEPTABLE ELEVATIONS WITH CASEWORK DRAWINGS AND ELEVATIONS.
- 9 PROVIDE 20A/120V CIRCUIT BREAKER IN PANELBOARD INDICATED. MATCH KAIC RATINGS OF PANELBOARD.
- 10 PROVIDE ALL WORK NECESSARY TO RECONNECT EXISTING LOADS. NOT ALL EXISTING LOADS HAVE BEEN NOTED.
- 11 120V CONNECTION FOR FIRE ALARM CONTROL PANEL.
- 12 CONNECT NEW RECEPTABLES TO CIRCUIT SERVING EXISTING RECEPTACLE IN THIS ROOM.



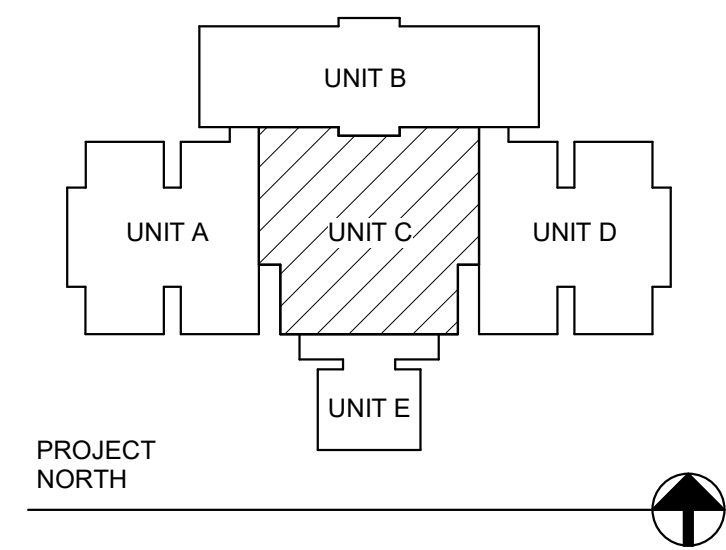
**1 ELECTRICAL FIRST FLOOR POWER PLAN - UNIT C**  
1/8" = 1'-0"



creative engineering solutions  
mechanical • electrical • plumbing  
201 S Rural St., Suite 210  
Indianapolis, IN 46201-463-777-8182  
www.creativeng.net

ADDENDUM # 7 - ISSUED 06/19/2024

#	Date	Description
---	------	-------------



**VPS ARCHITECTURE**  
528 Main Street - Suite 400  
905 North Capitol Avenue - Suite 100  
PH: (812) 423-7729

Evansville, Indiana 47708  
Indianapolis, Indiana 46204  
www.VPSARCH.com

STRUCTURAL: ENGINEERS: CES

Project Name:  
**RENOVATIONS TO RUSHVILLE ELEMENTARY SCHOOL**

Drawing Title:  
**ELECTRICAL FIRST FLOOR POWER PLAN - UNIT C**

	Client Project No:	
	VPS Project No:	2023021.00
	Project Issue Date:	05/03/24
	Drawing No:	EP103