

Addendum D3

re: **DUNELAND SCHOOL CORPORATION**
Chesterton Middle School Demolition
513001.00

date: **June 21, 2024**

This Addendum forms a part of the Contract Documents for the above-referenced project and is issued in accordance with the Instructions to Bidders. Acknowledge receipt of this addendum by inserting its number in the space provided in the bid form.

ITEM	LOCATION	DESCRIPTION
A3.01	DRAWING Sanitary & Storm Sewer Cap Off Site Plan <i>(New Drawing Issued)</i>	<u>ADDITION:</u> Contractor to call 811 for locations of utilities prior to demolition work. All existing utilities shall be disconnected and capped off before demolition. See new sheet Sanitary & Storm Sewer Cap Off Site Plan for additional utility information. Gas Disconnect: Gas needs to be cut and capped at the street. Contractor needs to verify Gas has a hole in the ground next to the yellow spray paint or yellow flags from the utility location. Electrical Disconnect: If the power line is connected to a building from above, tell the power company to drop from the pole, if power line below ground, tell power company to be but in the clear and gapped from transformer. Contractor to meet power company on site to ensure the disconnect of the power to the property. Water Disconnect: Contact the municipality that services water to get the municipality to cap the line or Contractor to turn off at the street with a water key. Sewer Disconnect: Demo Contractor must contact the Chesterton Utility Department at (219) 926-1572 to schedule an inspection. A licensed site contractor or plumber shall dig to sewer manhole, cut and cap sewer line.



Addendum D3
DUNELAND SCHOOL CORPORATION
Chesterton Middle School Demolition
June 21, 2024
Page 2

Submitted by:
The Moake Park Group, Inc.



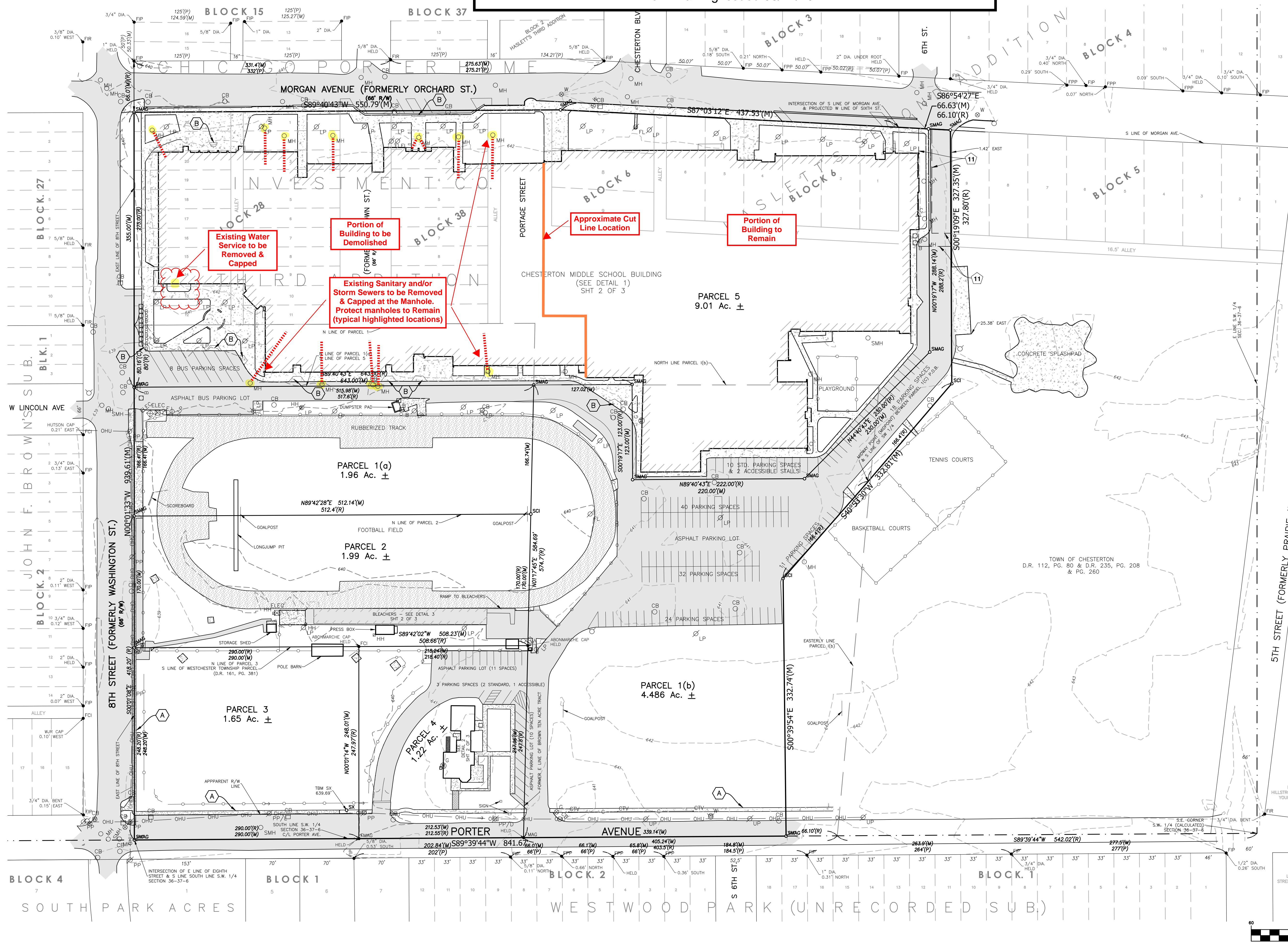
Jeff E. Schroeder, AIA
President

attachments: **(New Drawing Issued)** Sanitary & Storm Sewer Cap Off Site Plan

copies: All Plan Holders
513001/670

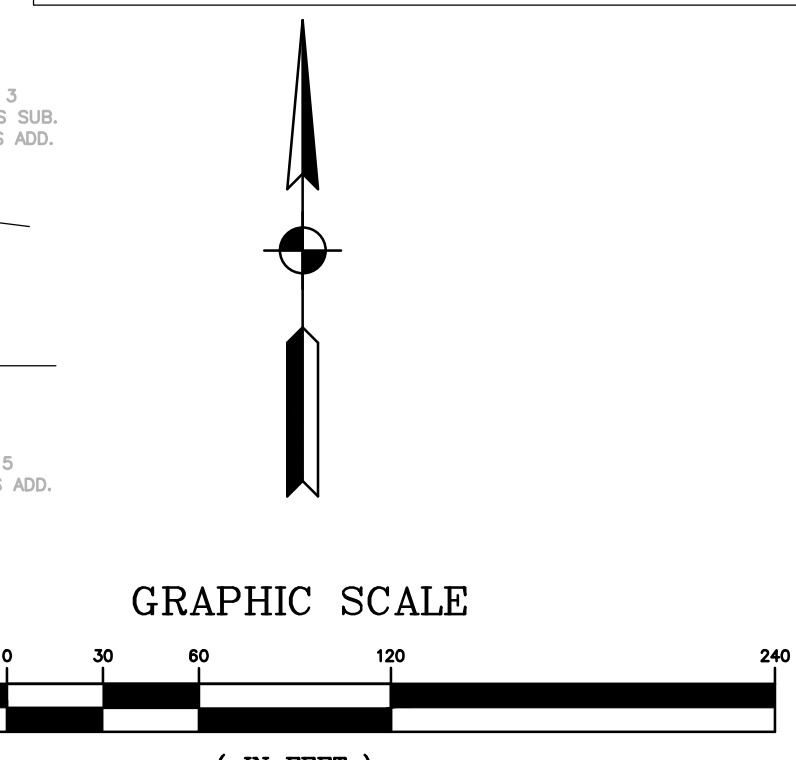
Sanitary & Storm Sewer Cap Off Site Plan

New Drawing Issued 06/21/2024



LEGEND

(A)	5' CONC. SIDEWALK
(B)	ADA RAMP
(ADA)	ADA PARKING SPOT
(S)	SCHEDULE B ITEM
(FCI)	FOUND IRON ROD WITH ID CAP
(FIR)	FOUND IRON ROD
(FIP)	FOUND IRON PIPE
(FPP)	FOUND PINCH PIPE
(SMAG)	SET MAG NAIL
(SCI)	SET IRON ROD W/ ABONMARCHE CAP
(T)	TELEPHONE PEDESTAL
(C)	CABLE PEDESTAL
(CTV)	CABLE TV LOCATE MARKER
(B)	BOLLARD
(ELEC)	ELECTRIC TRANSFORMER
(LP)	LIGHT POLE
(UP)	UTILITY POLE
(PP/L)	POWER POLE W/ LIGHT
(PP/D)	POWER POLE W/ DROP
(W)	GUY WIRE
(V)	WATER VALVE
(M)	WATER METER
(F)	FIRE HYDRANT
(G)	GAS VALVE
(M)	GAS METER
(CB)	CATCH BASIN
(CB)	CURB CATCH BASIN
(MH)	GENERAL MANHOLE
(SMH)	SANITARY MANHOLE
(HH)	HANDHOLE
(FL)	FLAGPOLE
(C)	CHAINLINK FENCE
(T)	TELEPHONE LINE
(G)	GAS LINE
(OHU)	OVERHEAD UTILITIES
(XXX)	1-FOOT VERTICAL CONTOUR LINE
(M)	MEASURED DISTANCE
(P)	PLATTED DISTANCE
(R)	RECORD DISTANCE
(GA)	GREEN AREA
(CONC)	CONCRETE AREA
(ASPH)	ASPHALT AREA
(RUB)	RUBBER TRACK AREA
(BRICK)	BRICK AREA



ABONMARCHÉ
 Benton Harbor
 Chicago
 Hammond
 South Haven
 Valparaiso
 Hobart
 Engineering Architecture Land Surveying

PROJECT:
**651 MORGAN STREET
 CHESTERION IN 46304
 PORTER COUNTY, INDIANA**

SHEET TITLE:
**ALTA/NSPS LAND TITLE SURVEY
 CLIENT: DUNELAND YMCA
 SECTION 36 T37N R6W**

DRAWN BY:
BRG
 DESIGNED BY:
BRG
 PM REVIEW:
MSK
 QA/QC REVIEW:
KDG
 DATE:
02/07/2024
 SEAL:

SIGNATURE:
 DATE:

HARD COPY IS INTENDED TO BE 24" X 36" WHEN PLOTTED. SCALES INDICATED AND GRAPHIC QUALITY MAY NOT BE ACCURATE FOR ANY OTHER SIZES

SCALE:
 HORIZ: 1"=60'
 VERT: N/A
 ACI JOB #
23-1400
 SHEET NO.

NO.	REVISION DESCRIPTION:	BY:	DATE:
-----	-----------------------	-----	-------