

# FLOYD COUNTY



## Old Vincennes Road Slide Correction

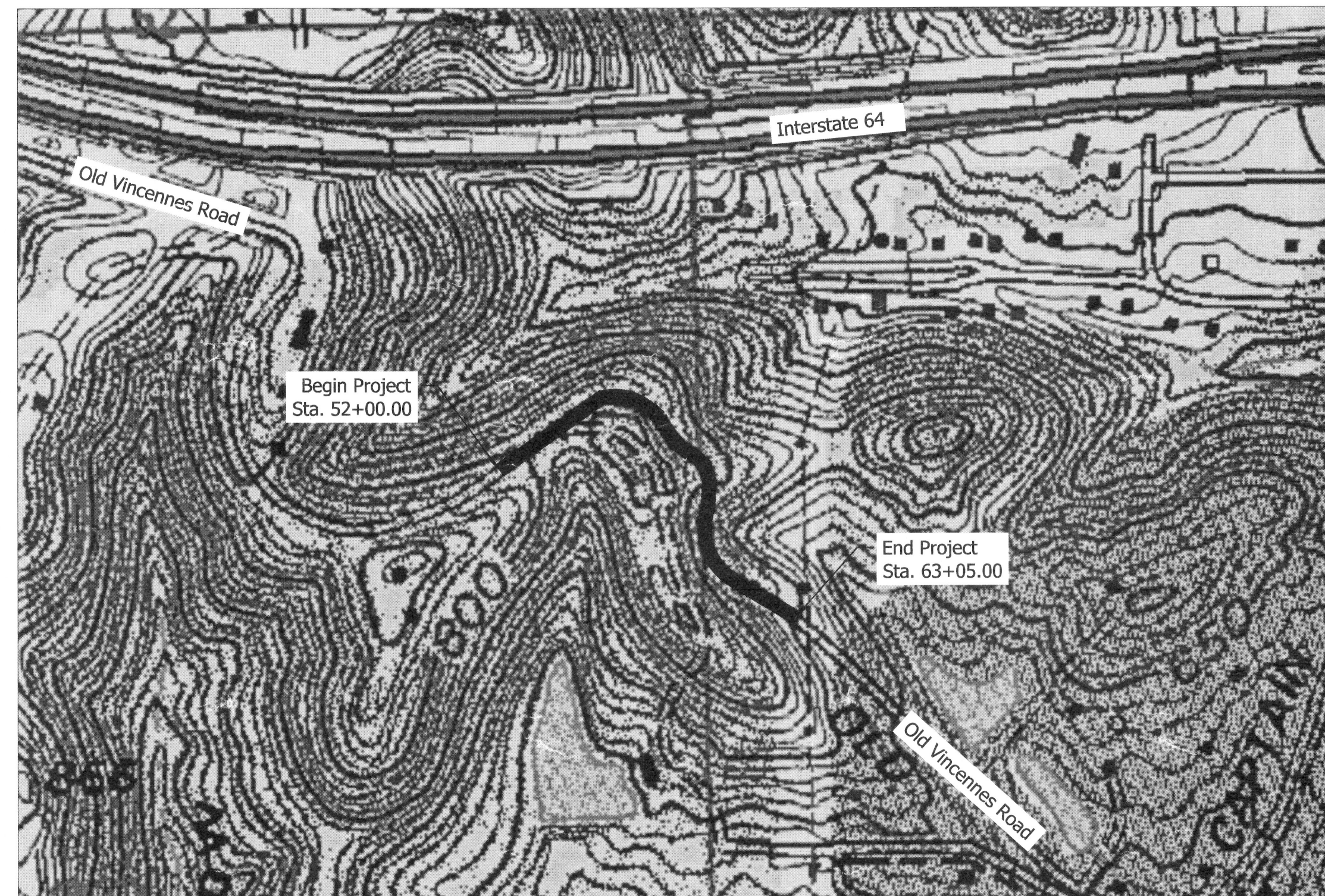


SLIDE CORRECTION PROJECT ON OLD VINCENNES ROAD LOCATED 0.32 MILES NORTHWEST OF CAPTAIN FRANK ROAD IN SECTION 32 AND 33, TOWNSHIP 16 NORTH, RANGE 2 EAST IN NEW ALBANY TOWNSHIP, FLOYD COUNTY, INDIANA

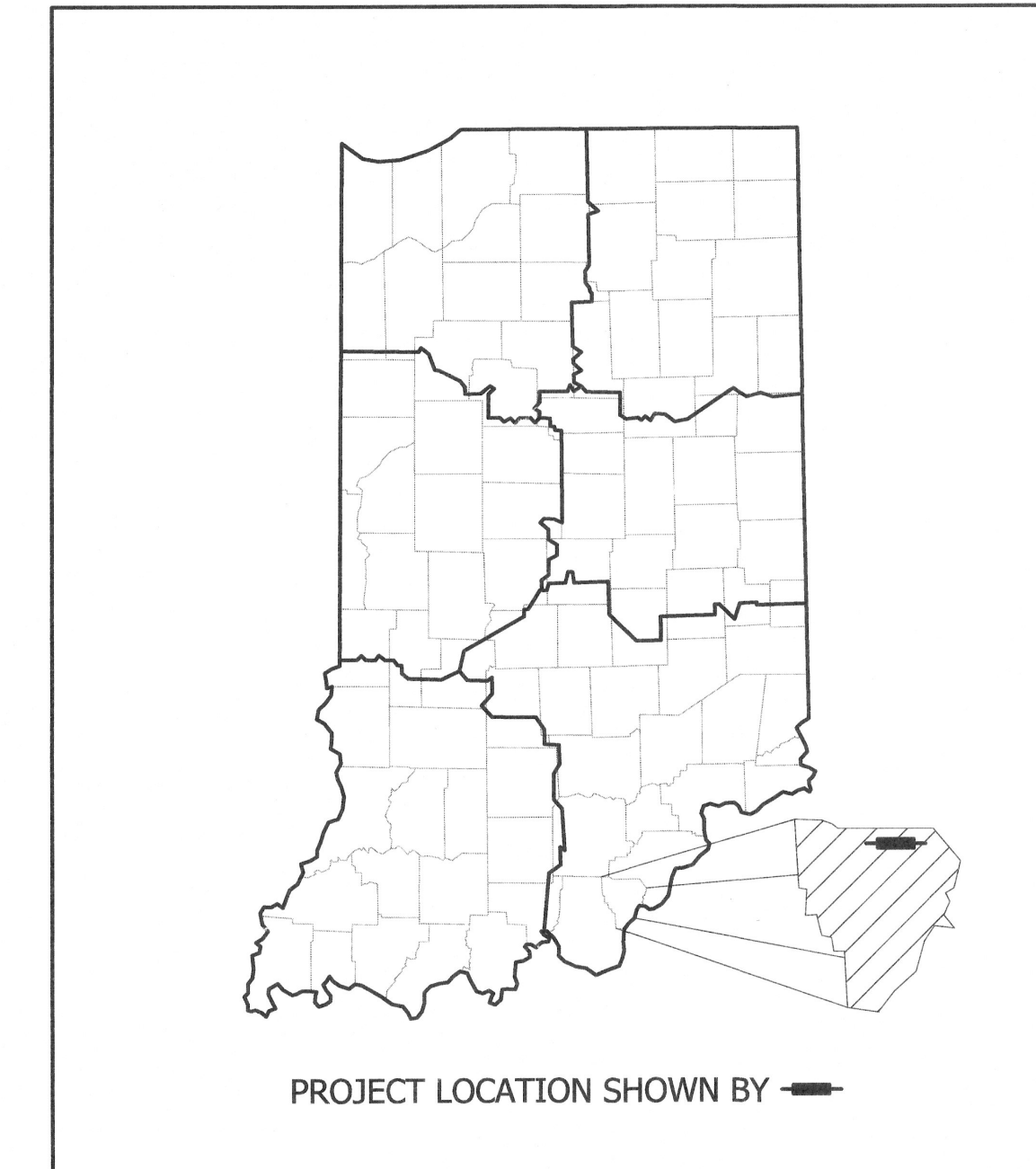
### FLOYD COUNTY COMMISSIONERS

	Date
AL KNABLE - DISTRICT 1	
	DATE
JOHN SCHELLENBERGER - DISTRICT 2	
	DATE
JASON SHARP - DISTRICT 3	

HORACIO URIETA, PE - COUNTY ENGINEER      08-06-2024  
 DATE



PROJECT LOCATION MAP  
 SCALE 1" = 200'



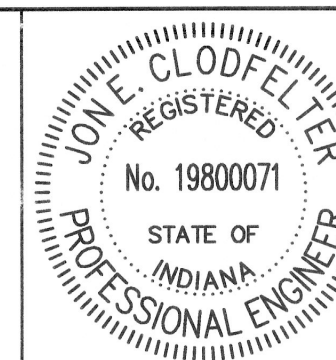
LATITUDE: 38°17'48"N      LONGITUDE: 85°51'47"W

GROSS LENGTH: .21 MI.  
 NET LENGTH: .21 MI.  
 MAXIMUM GRADE: 9.12 %

INDIANA DEPARTMENT OF TRANSPORTATION  
 STANDARD SPECIFICATIONS DATED 2024  
 TO BE USED WITH THESE PLANS



8440 Allison Pointe Blvd.  
 Suite 200  
 Indianapolis, IN 46250  
 Phone 317-895-2585  
 www.ucindy.com



PLANS PREPARED BY: **UNITED CONSULTING** (317) 895-2585  
 PHONE NUMBER  
 CERTIFIED BY: 8/5/2024  
 DATE  
 APPROVED FOR LETTING: \_\_\_\_\_  
 INDIANA DEPARTMENT OF TRANSPORTATION DATE

BRIDGE FILE	
N/A	
DESIGNATION	
-	
SURVEY BOOK	SHEETS
-	1 of 53
CONTRACT	PROJECT
-	-



### UTILITIES

**COMMUNICATIONS**  
 AT&T Distribution  
 510 East Spring Street  
 New Albany Indiana 47150  
 Contact: David Blackwell  
 216-543-0256  
 g09871@att.com

**ELECTRIC**  
 Duke Energy Indiana  
 2727 Central Avenue  
 Columbus, IN 47203  
 Contact: Rosandly Pierre  
 463-233-9064  
 rosandly.pierre@duke-energy.com

**COMMUNICATIONS**  
 Insight Communications  
 1900 N. Fares Ave.  
 Evansville, IN 47711  
 Contact: Daryl Hulsey  
 812-253-2755  
 daryl.hulsey@charter.com

**SANITARY**  
 New Albany  
 38 W. 10th Street  
 New Albany, IN 47150  
 Contact: Scott Wilkinson  
 812-948-5320  
 swilkinson@cityofnewalbany.com

### REVISIONS

SHEET NO.	DATE	REVISION
1	8/8/2024	Revised Title Sheet - Signatures Added
2	8/8/2024	Revised Index Sheet

### GENERAL NOTES

SHEET NO.	DESCRIPTION
	The project limits may include private laterals to the utilities. The contractor shall verify the location of private laterals.

### INDEX

SHEET NO.	DESCRIPTION
1	TITLE
2	INDEX & GENERAL NOTES
3	TYPICAL SECTIONS - NORTH SLIDE
4	TYPICAL SECTIONS - SOUTH SLIDE
5	SURVEY CONTROL
6	DETOUR ROUTE
7	PLAN AND PROFILE - NORTH SLIDE - DRILLED SHAFT OPTION
8	PLAN AND PROFILE - NORTH SLIDE - BEAM AND LAGGING OPTION
9	PLAN AND PROFILE - SOUTH SLIDE - DRILLED SHAFT OPTION
10	PLAN AND PROFILE - SOUTH SLIDE - BEAM AND LAGGING OPTION
11	SUPERELEVATION DIAGRAM - NORTH SLIDE
12	SUPERELEVATION DIAGRAM - SOUTH SLIDE
13-14	EROSION CONTROL DETAILS
15	WALL DETAIL - DRILLED SHAFT - NORTH SLIDE
16	WALL DETAIL - BEAM AND LAGGING - NORTH SLIDE
17-18	WALL DETAIL - DRILLED SHAFT - SOUTH SLIDE
19-20	WALL DETAIL - BEAM AND LAGGING - SOUTH SLIDE
21	PAVEMENT MARKING DETAILS
22	SUMMARY OF QUANTITIES AND STRUCTURE DATA TABLES
23	UNDERDRAIN TABLE
24 - 38	CROSS SECTIONS - DRILLED SHAFT OPTION
39 - 53	CROSS SECTIONS - BEAM AND LAGGING OPTION

File Name: P:\RD\CD\23-106-046\_Vincennes Rd Slide Correction\Road\Drawings\Plans\Index.dwg Plot Date: 8/8/2024 Plotted By: Heather Kigour

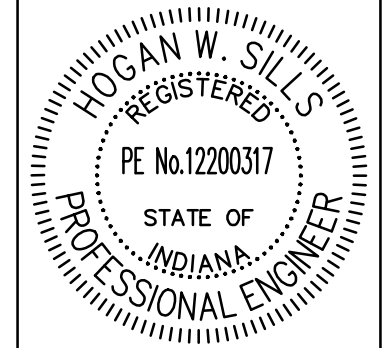


CALL TWO WORKING DAYS BEFORE YOU DIG  
**Call 811 or 800-382-5544**

8/8/24 - Revised Index Sheet



8440 Allison Pointe Boulevard, Suite 200  
 Indianapolis, IN 46250  
 Phone 317-895-2585  
 www.ucindy.com



RECOMMENDED FOR APPROVAL: *Hogan Sullis* 8/8/2024  
 DESIGN ENGINEER DATE

DESIGNED: HWS DRAWN: CJF  
 CHECKED: HEK CHECKED: HEK

FLOYD COUNTY  
 PUBLIC WORKS DEPARTMENT

INDEX & GENERAL NOTES

HORIZONTAL SCALE	BRIDGE FILE
N/A	-
VERTICAL SCALE	DESIGNATION
N/A	-
SURVEY BOOK	SHEETS
-	2 of 53
CONTRACT	PROJECT
-	-