

MSD PIKE TOWNSHIP PIKE HIGH SCHOOL BASEBALL/SOFTBALL RENOVATIONS

5401 W. 71ST STREET
INDIANAPOLIS, IN. 46268

MSD PIKE TOWNSHIP



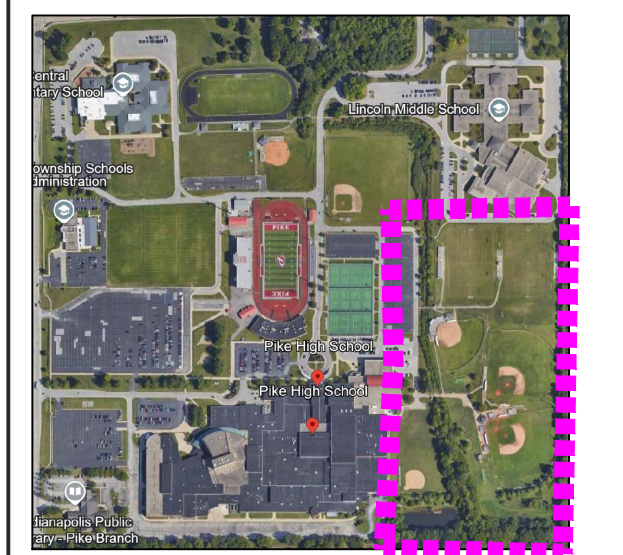
Academics - Opportunities - Diversity

ARCHITECT



317-848-0966

WWW.FHAI.COM



BASEBALL / SOFTBALL
PROJECT LIMITS

KEY PLAN

100% CONSTRUCTION DOCUMENTS



PROJECT MANAGER: PW
DRAWN BY: JB.EB
PROJECT NUMBER: 224064.00
PROJECT CONSTRUCTION ISSUE DATE: 10-03-2024

REV. NO.	DESCRIPTION	DATE
1	ADDENDUM #1	10/17/2024

ENLARGED
SOFTBALL LAYOUT

G1.20



LAYOUT PLAN NOTES

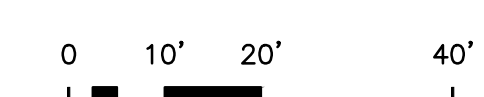
- 1 SYNTHETIC TURF ATHLETIC FIELD WITH INFILL MATERIAL IN ALTERNATING FIELD GREEN AND LIME GREEN PANELS IN ACTIVE PLAY AREAS OVER UNDERDRAIN SYSTEM. SEE PLAN FOR AREAS AND DETAILS 1,4,13 SD4.0
- 2 SYNTHETIC TURF INFILL WITH INFILL MATERIAL IN BRICK DUST COLOR TURF (COLOR TO MATCH EXISTING) OVER UNDERDRAIN SYSTEM. SEE DETAIL 1,4,13 SD4.0
- 3 SYNTHETIC TURF WARNING TRACK WITH INFILL MATERIAL IN COLOR AS SELECTED BY OWNER (TAN) OVER UNDERDRAIN SYSTEM. SEE DETAILS 8,13 SD4.0
- 4 BATTING CAGE SYNTHETIC TURF AS NOTED IN HATCHED AREA WITH THATCH LAYER BUT NO INFILL IN COLOR TO MATCH ATHLETIC FIELD COLOR OR INFILL AS GRAPHICALLY NOTED ADHERED TO EXISTING PREPARED CONCRETE SLAB.
- 5 SYNTHETIC TURF FIELD PERIMETER BANDING WITH INFILL MATERIAL IN "PIKE" WHITE COLOR TURF OVER UNDERDRAIN SYSTEM. SEE DETAIL 1,4,13 SD4.0
- 6 SYNTHETIC TURF FIELD "OUT OF PLAY" WITH INFILL MATERIAL IN "PIKE" RED COLOR TURF OVER UNDERDRAIN SYSTEM. SEE DETAIL 1,4,13 SD4.0
- 7 PIKE HIGH SCHOOL BRANDING LETTERING INLAY IN SYNTHETIC TURF IN LOCATIONS AND SIZE NOTED. LETTERING TO MATCH SCHOOL COLORS.
- 8 PIKE HIGH SCHOOL BRANDING LOGO INLAY IN SYNTHETIC TURF IN LOCATIONS AND SIZE NOTED. LETTERING TO MATCH SCHOOL COLORS.
- 9 PVC COATED CHAIN LINK GATES. SEE PLAN FOR WIDTH. SEE DETAILS 9,10,11 SD4.0
- 10 IN LOCATIONS NOTED INSTALL FENCE POSTS AND THEN POUR 12" WIDE X 18" DEEP CONCRETE CURB FOR MAINTENANCE EDGE AND INSTALLATION OF COMPOSITE LUMBER SYNTHETIC TURF ATTACHMENT BOARD. SEE DETAILS 7,12,13 SD4.0
- 11 PVC COATED CHAIN LINK FENCING. SEE PLAN FOR HEIGHT. SEE DETAILS 8,9,10,11,12,13 SD4.0
- 12 PVC COATED CHAIN LINK FENCING SET 6" IN FROM CONCRETE SLAB EDGE AND SLAB WITH THICKENED EDGE POURED AROUND POSTS.
- 13 PORTABLE PITCHING MOUNDS #PPBIT AS MANUFACTURED BY SPORTSFIELD SPECIALTIES, DELHI, NY. 888-975-3343
- 14 PORTABLE DOUBLE BULLPEN PITCHING MOUNDS #PPDBIT AS MANUFACTURED BY SPORTSFIELD SPECIALTIES, DELHI, NY. 888-975-3343
- 15 PITCHING RUBBER. INSTALL PER MANUFACTURERS SPECIFICATIONS.
- 16 BASES AND HOME PLATE. SEE DETAIL 4 SD4.0
- 17 BASELINES AND FIELD MARKINGS PER NFHS OR OFFICIAL GOVERNING ATHLETIC AGENCIES AND OWNER.
- 18 INSTALL 35' TALL CUSTOM POLE TO POLE TENSION SOFTBALL BACKSTOP NETTING SYSTEM WITH WALL PAD BACKSTOP INCLUDING POWDER COATED BLACK STEEL SUPPORT POLES AS MANUFACTURED BY SPORTSFIELD SPECIALTIES, 607-746-8911. SEE DETAIL 15 SD4.0.
- 19 INSTALL 40' TALL CUSTOM POLE TO POLE TIE BACK TENSION BASEBALL BACKSTOP NETTING SYSTEM WITH WALL PAD BACKSTOP INCLUDING POWDER COATED BLACK STEEL SUPPORT POLES AS MANUFACTURED BY SPORTSFIELD SPECIALTIES, 607-746-8911. SEE DETAIL 15 SD4.0.
- 20 INSTALL PVC FENCE CAP ALONG TOP RAIL OF FENCE AS NOTED.
- 21 PROVIDE SMOOTH CONCRETE SURFACE BELOW GRADE AND BOLT 2X4" COMPOSITE NAILER STRIP TO CONCRETE CURB SIMILAR TO DETAIL 13 SD4.0.
- 22 REMOVE EXISTING BENCHES AND CUBBIE STORAGE UNITS IN DUGOUTS AND INSTALL NEW 36" LONG POLY BENCH UNITS WITH BACK SEAT AND 2 CUBBIE STORAGE UNITS WITH 2 HELMET AND BAT RACKS AND 36" FEET RACK/HOOK STRIP PER DUGOUT AS MANUFACTURED BY SPORTSFIELD SPECIALTIES, 607-746-8911. SEE DETAILS FOR MORE INFORMATION.
- 23 INSTALL CUSTOM WIND SCREENS (TO RECEIVE DISTRICT APPROVED ARTWORK) FULL FENCE HEIGHT IN LOCATIONS NOTED ON PLANS.
- 24 INSTALL CUSTOM DOUBLE TENSION BASEBALL AND SOFTBALL BATTING TUNNEL AS MANUFACTURED BY SPORTSFIELD SPECIALTIES 607-746-8911. SEE PLAN LOCATION FOR SIZES AND LOCATIONS.
- 25 INSTALL NEW FOUL POLE. SEE DETAIL 7 SD4.0.
- 26 SYNTHETIC TURF AS NOTED IN CROSS HATCHED AREAS WITH THATCH LAYER BUT NO INFILL AND PERMEABLE BACKING IN PIKE "RED" OR "WHITE" COLOR TO MATCH OUT OF BOUNDS COLOR. TURF TO BE ADHERED TO PREPARED CONCRETE SURFACE OF EXISTING DUGOUT SLAB WITH ACCEPTABLE ADHESIVE. ADHERE TURF IN MANNER TO NOT IMPEDE DRAINAGE FLOW TO DRAINS OR EDGE OF EXISTING REMAINING DUGOUT SLAB.
- 27 PROVIDE REMOVABLE TURF INSERTS IN HIGH TRAFFIC AREAS AS NOTED BY SHADED AREAS.
- 28 DISCONNECT EXISTING SCOREBOARD AND REMOVE EXISTING DISCONNECT SWITCH. REMOVE EXISTING CONDUIT AND WIRING TO BELOW GRADE. PROVIDE NEW 20A 120V, 1P, NEAR 36" NOTIFIED DISCONNECT MOUNTED TO SIDE OF NEW SCOREBOARD FRAME. PROVIDE NEW CONDUIT AND WIRING TO MATCH PREVIOUS AND EXTEND EXISTING CIRCUIT FROM BELOW GRADE TO CONNECT NEW SCOREBOARD THROUGH DISCONNECT.
- 29 SEE DETAIL PLAN SHEET SD4.1 FOR BLEACHER MODIFICATIONS.

PROPOSED SITE LEGEND

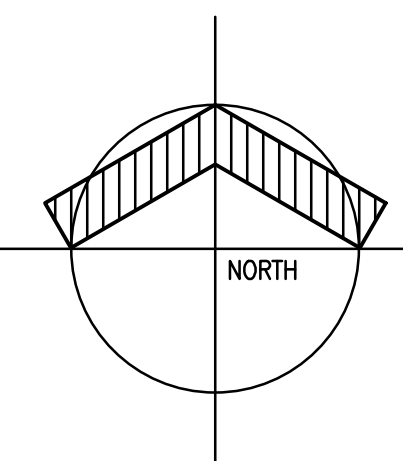
- ALTERNATING "FIELD GREEN" AND "LIME GREEN" PANELS IN FAIR PLAY BALL FIELD SYNTHETIC TURF. "FIELD GREEN" ONLY IN ALL OUT OF PLAY AREAS.
- INFILL COLOR "BRICK DUST" OR WARNING TRACK "TAN" BALL FIELD SYNTHETIC TURF.
- OUT OF PLAY AREAS IN PIKE "WHITE" OR "RED" SYNTHETIC TURF.
- SYNTHETIC TURF AREAS IN PIKE "WHITE" OR "RED" ADHERED TO EXISTING DUGOUT CONCRETE FLOOR.
- ADHERED BATTING CAGE SYNTHETIC TURF IN COLORS TO MATCH INFILL OR PLAYING FIELD OVER EXISTING PREPARED CONCRETE SURFACE.

SOFTBALL LAYOUT PLAN

SCALE: 1" = 20'-0"



SCALE: 1" = 20'



CAUTION !!
THE LOCATION OF ALL EXISTING UNDERGROUND UTILITIES PRIOR TO THE START OF CONSTRUCTION. ALL BASE CONSTRUCTION WORK, SYNTHETIC TURF SURFACING AND SAFETY POURED IN PLACE SURFACING INSTALL IS TO BE PERFORMED BY (1) SINGULAR (SYNTHETIC TURF/POURED) IN PLACE SURFACING MANUFACTURE APPROVED/CERTIFIED CONTRACTOR

LOCATIONS GIVEN ARE APPROXIMATE AND ARE TO BE SITE VERIFIED PRIOR TO THE START OF CONSTRUCTION. ALL BASE CONSTRUCTION WORK, SYNTHETIC TURF SURFACING AND SAFETY POURED IN PLACE SURFACING INSTALL IS TO BE PERFORMED BY (1) SINGULAR (SYNTHETIC TURF/POURED) IN PLACE SURFACING MANUFACTURE APPROVED/CERTIFIED CONTRACTOR

811
Know what's below.
Call before you dig.
Call 811 or visit 811.org

**MSD PIKE TOWNSHIP
PIKE HIGH SCHOOL
BASEBALL/SOFTBALL
RENOVATIONS**
5401 W. 71ST STREET
INDIANAPOLIS, IN. 46268

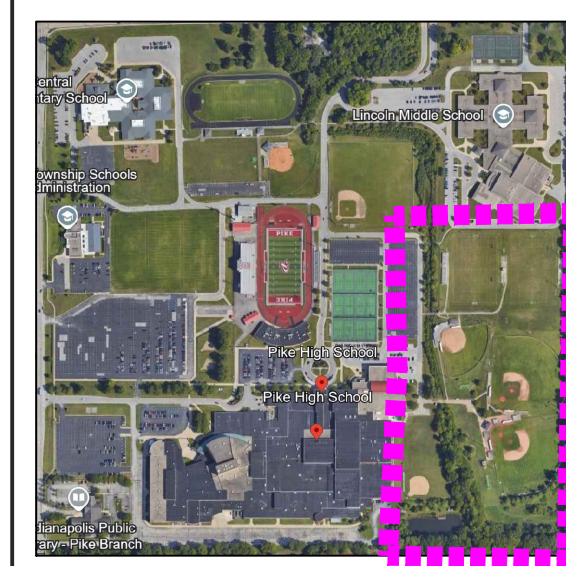
MSD PIKE TOWNSHIP



ARCHITECT



317-848-0966 WWW.FHAI.COM



BASEBALL / SOFTBALL
PROJECT LIMITS

KEY PLAN

100% CONSTRUCTION DOCUMENTS



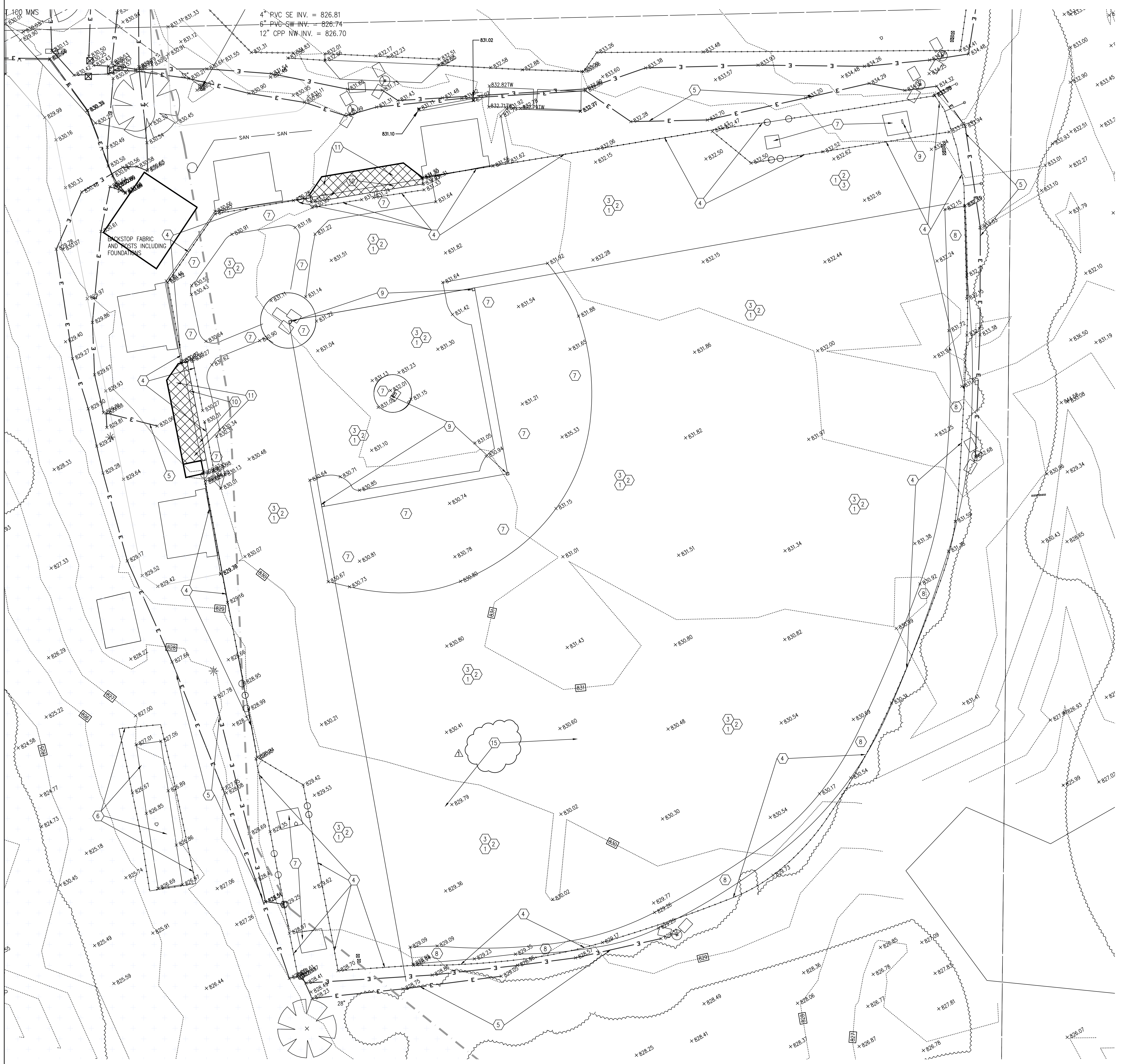
PROJECT MANAGER: PW
DRAWN BY: JB.EB
PROJECT NUMBER: 224064.00
PROJECT CONSTRUCTION ISSUE DATE: 10-03-2024

REV. NO.	DESCRIPTION	DATE
1	ADDENDUM #1	10/17/2024

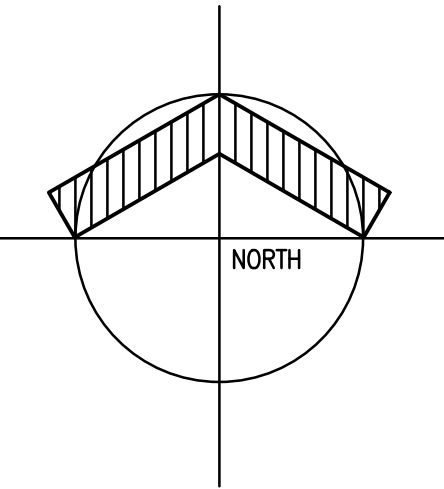
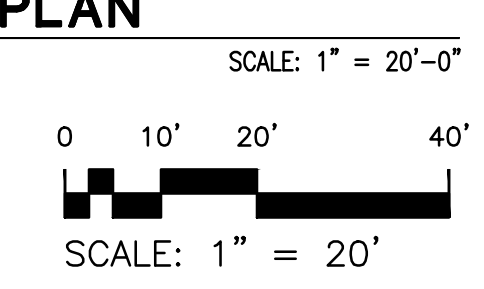
ENLARGED
BASEBALL DEMOLITION
GD1.10

DEMO PLAN NOTES

- 1 STRIP EXISTING SOD AND DISPOSE OF OFFSITE.
 - 2 STRIP EXISTING TOPSOIL AND DISPOSE OF EXCESS NOT REQUIRED FOR CONSTRUCTION OFF SITE. FOLLOWING REMOVAL OF TOPSOIL STRIP SUBSOIL TO DEPTHS AS REQUIRED FOR NEW SYNTHETIC TURF FIELD CONSTRUCTION AND DISPOSE OF EXCESS OFF SITE.
 - 3 IF IRRIGATION OR UNDERDRAIN SYSTEMS ARE ENCOUNTERED DURING GRADING OPERATIONS REMOVE ANY PIPING IN ITS ENTIRETY AND DISPOSE OF OFF SITE. ANY IRRIGATION HEADS OR EQUIPMENT ENCOUNTERED SHALL BE CAREFULLY REMOVED AND TURNED OVER TO THE OWNER FOR REUSE.
 - 4 REMOVE EXISTING FENCING INCLUDING POSTS, GATES, FOOTINGS AND FENCE FABRIC TO LIMITS OF NEW FENCING AND AS NOTED ON PLAN AND DISPOSE OF OFFSITE. REMOVAL SHALL ALSO INCLUDE EXISTING BACKSTOP POSTS AND BACKSTOP FABRIC AS NOTED ON PLAN.
 - 5 PROTECT EXISTING DRAINAGE STRUCTURES AND UTILITIES DURING DEMOLITION WORK. REPAIR AND RESET ANY ELEVATIONS AS REQUIRED FOR NEW CONSTRUCTION. IN AREAS OF NEW SYNTHETIC SET RIM ELEV. BELOW TURF FABRIC AND DRAINAGE AGGREGATE AND CAP WITH FILTER FABRIC.
 - 6 REMOVE EXISTING BATTING CAGE IN ITS ENTIRETY INCLUDING CAGE, CONCRETE, FENCING, NETTING, ETC. AND DISPOSE OF OFFSITE.
 - 7 REMOVE EXISTING INFIELD MATERIAL AND SUBSOIL TO SUBGRADE OF NEW CONSTRUCTION AND DISPOSE OF OFF SITE.
 - 8 REMOVE EXISTING WARNING TRACK MATERIAL AND SUBSOIL TO SUBGRADE OF NEW CONSTRUCTION AND DISPOSE OF OFF SITE.
 - 9 REMOVE EXISTING BASES AND OTHER MISC. ATHLETIC EQUIPMENT AND TURN OVER TO THE OWNER.
 - 10 PROTECT AND POWERWASH EXISTING DUGOUT FLOORS AS NOTED IN CROSSHATCHED AREAS AND PREPARE FOR SYNTHETIC TURF INSTALLATION.
 - 11 REMOVE ALL EXISTING WOOD HOOK STRIPS, WOOD STORAGE UNITS AND WOOD BENCHES AND DISPOSE OF OFF SITE. SEE DETAIL SHEETS FOR ADDITIONAL INFORMATION.
 - 12 SAWCUT AND REMOVE EXISTING CURB AND DISPOSE OF OFFSITE.
 - 13 SAWCUT AND REMOVE EXISTING CONCRETE PAVING AS NOTED BY SHADED AREAS ON PLAN AND DISPOSE OF OFF SITE.
 - 15 REFER TO SITE UTILITY PLAN FOR EXTENTS OF SOIL REMOVAL TO ACCOMMODATE UNDERGROUND DETENTION SYSTEM.
- NOTE: CONTRACTOR TO CONFIRM LOCATION OF ALL EXISTING SITE UTILITIES AND REPAIR AND REESTABLISH ANY UTILITIES DISTURBED DURING CONSTRUCTION ACTIVITIES.



BASEBALL DEMOLITION PLAN



CAUTION!!
THE LOCATION OF ALL EXISTING UNDERGROUND UTILITIES SHOWN ON THIS PLAN ARE BASED ON THE RECORD DRAWINGS AND FIELD SURVEY. FANNING HOWEY ASSOCIATES, INC. DOES NOT WARRANT THE ACCURACY OF THESE UTILITIES. CONTRACTOR SHALL VERIFY THE LOCATION AND DEPTH OF ALL EXISTING UTILITIES PRIOR TO CONSTRUCTION. CONTRACTOR SHALL BE RESPONSIBLE FOR THE PROTECTION AND REPAIR OF ALL UTILITIES ENCOUNTERED DURING CONSTRUCTION. CONTRACTOR SHALL BE RESPONSIBLE FOR THE PROTECTION AND REPAIR OF ALL EXISTING STRUCTURES AND UTILITIES ENCOUNTERED DURING CONSTRUCTION. CONTRACTOR SHALL BE RESPONSIBLE FOR THE PROTECTION AND REPAIR OF ALL EXISTING STRUCTURES AND UTILITIES ENCOUNTERED DURING CONSTRUCTION.

LOCATIONS GIVEN ARE APPROXIMATE AND ARE TO BE SITE VERIFIED PRIOR TO THE START OF CONSTRUCTION. ALL BASE CONSTRUCTION WORK, SYNTHETIC TURF SURFACING AND SAFETY POURED IN PLACE SURFACING INSTALL IS TO BE PERFORMED BY (1) SINGULAR (SYNTHETIC TURF/POURED IN PLACE SURFACING MANUFACTURE APPROVED/CERTIFIED) CONTRACTOR



MSD PIKE TOWNSHIP PIKE HIGH SCHOOL BASEBALL/SOFTBALL RENOVATIONS

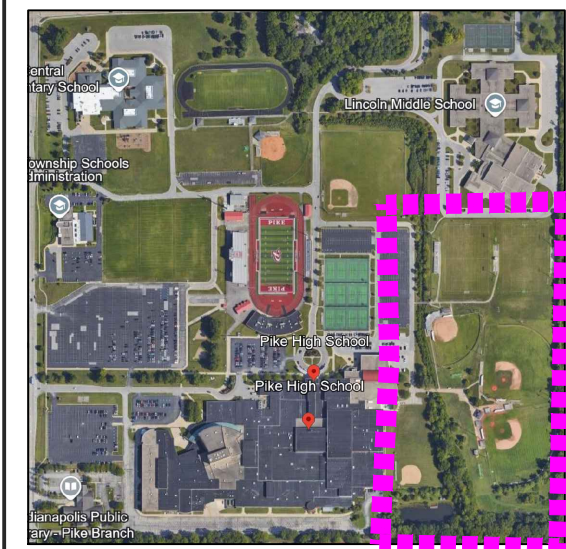
5401 W. 71ST STREET
INDIANAPOLIS, IN. 46268
MSD PIKE TOWNSHIP



ARCHITECT



317-848-0966 WWW.FHAL.COM



BASEBALL / SOFTBALL
PROJECT LIMITS

KEY PLAN

100% CONSTRUCTION DOCUMENTS



PROJECT MANAGER: PW
DRAWN BY: JB.EB
PROJECT NUMBER: 22406.00
PROJECT CONSTRUCTION ISSUE DATE: 10-03-2024

REV. NO.	DESCRIPTION	DATE
1	ADDENDUM #1	10/17/2024

ENLARGED
SOFTBALL DEMOLITION
GD1.20

DEMO PLAN NOTES

- STRIP EXISTING SOD AND DISPOSE OF OFFSITE.
- STRIP EXISTING TOPSOIL AND DISPOSE OF EXCESS NOT REQUIRED FOR CONSTRUCTION OFF SITE. FOLLOWING REMOVAL OF TOPSOIL STRIP SUBSOIL TO DEPTHS AS REQUIRED FOR NEW SYNTHETIC TURF FIELD CONSTRUCTION AND DISPOSE OF EXCESS OFF SITE.
- IF IRRIGATION OR UNDERDRAIN SYSTEMS ARE ENCOUNTERED DURING GRADING OPERATIONS REMOVE ANY PIPING IN ITS ENTIRETY AND DISPOSE OF OFF SITE. ANY IRRIGATION HEADS OR EQUIPMENT ENCOUNTERED SHALL BE CAREFULLY REMOVED AND TURNED OVER TO THE OWNER FOR REUSE.
- REMOVE EXISTING FENCING INCLUDING POSTS, GATES, FOOTINGS AND FENCE FABRIC TO LIMITS OF NEW FENCING AND AS NOTED ON PLAN AND DISPOSE OF OFFSITE. REMOVAL SHALL ALSO INCLUDE EXISTING BACKSTOP POSTS AND BACKSTOP FABRIC AS NOTED ON PLAN.
- PROTECT EXISTING DRAINAGE STRUCTURES AND UTILITIES DURING DEMOLITION WORK. REPAIR AND RESET ANY ELEVATIONS AS REQUIRED FOR NEW CONSTRUCTION. IN AREAS OF NEW SYNTHETIC SET RIM ELEV BELOW TURF FABRIC AND DRAINAGE AGGREGATE AND CAP WITH FILTER FABRIC.
- REMOVE EXISTING BATTING CAGE IN ITS ENTIRETY INCLUDING CAGE, CONCRETE, FENCING, NETTING, ETC. AND DISPOSE OF OFFSITE.
- REMOVE EXISTING INFIELD MATERIAL AND SUBSOIL TO SUBGRADE OF NEW CONSTRUCTION AND DISPOSE OF OFF SITE.
- REMOVE EXISTING WARNING TRACK MATERIAL AND SUBSOIL TO SUBGRADE OF NEW CONSTRUCTION AND DISPOSE OF OFF SITE.
- REMOVE EXISTING BASES AND OTHER MISC. ATHLETIC EQUIPMENT AND TURN OVER TO THE OWNER.
- PROTECT AND POWERWASH EXISTING DUGOUT FLOORS AS NOTED IN CROSSHATCHED AREAS AND PREPARE FOR SYNTHETIC TURF INSTALLATION.
- REMOVE ALL EXISTING WOOD HOOK STRIPS, WOOD STORAGE UNITS AND WOOD BENCHES AND DISPOSE OF OFF SITE. SEE DETAIL SHEETS FOR ADDITIONAL INFORMATION.
- SAWCUT AND REMOVE EXISTING CURB AND DISPOSE OF OFFSITE.
- SAWCUT AND REMOVE EXISTING CONCRETE PAVING AS NOTED BY SHADED AREAS ON PLAN AND DISPOSE OF OFF SITE.
- CONTRACTOR TO CLEAN AND INVESTIGATE EXISTING AREA DRAINS AND STORM LINES AND DETERMINE EXTENT OF SYSTEM AND BLOCKAGE AND CONTACT ARCHITECT AND ENGINEER FOR CORRECTIVE MEASURES.
- REFER TO SITE UTILITY PLAN FOR EXTENTS OF SOIL REMOVAL TO ACCOMMODATE UNDERGROUND DETENTION SYSTEM.

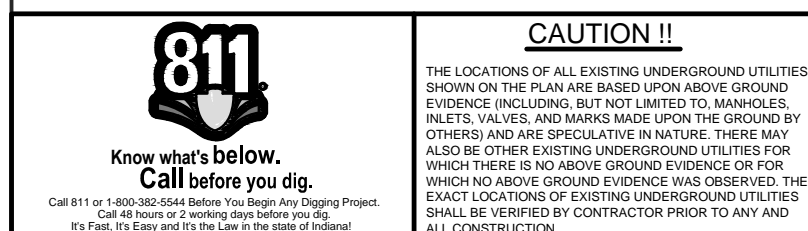
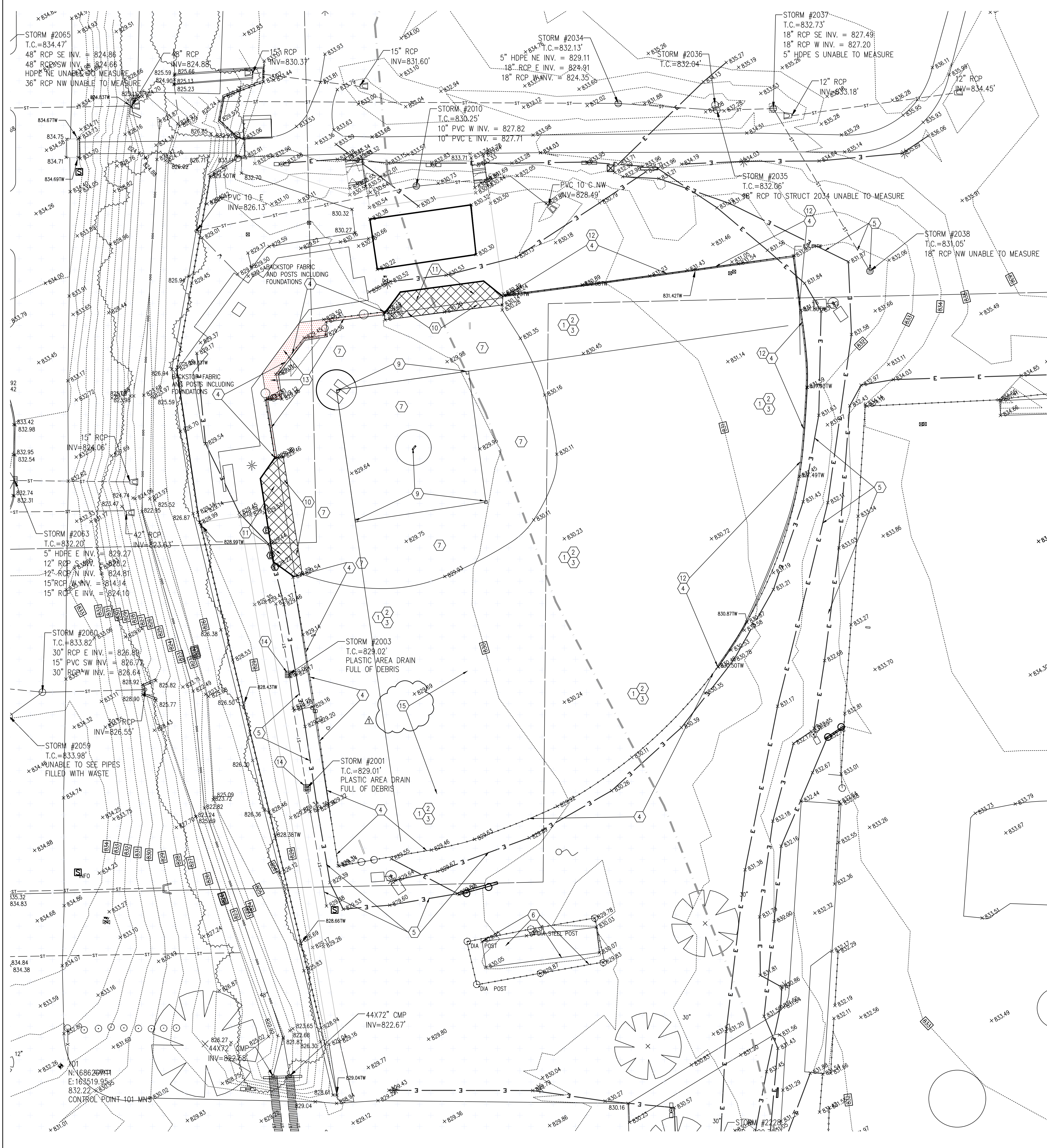
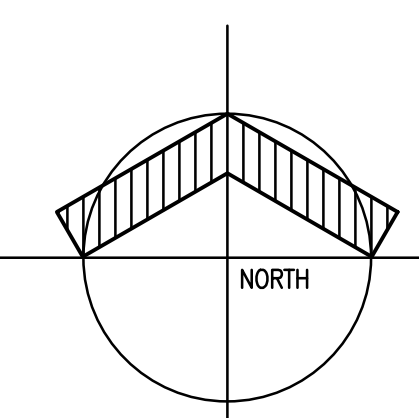
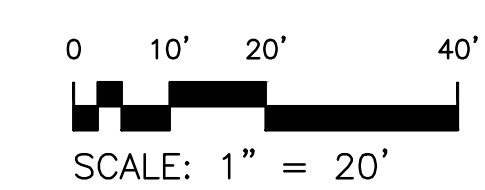
GENERAL DEMOLITION NOTES

- THE SITE SHALL BE STRIPPED OF EXISTING IMPROVEMENTS AS NOTED. ALL THE DEMOLISHED MATERIALS SHALL BE REMOVED FROM THE SITE BY THE GENERAL CONTRACTOR OR SUBCONTRACTOR.
- REMOVAL OF THE EXISTING IMPROVEMENTS ARE AS NOTED ON THE PLANS OR AS REQUIRED BY THE PROJECT. THE MATERIALS REMOVED FROM THE SITE SHALL BE DISPOSED OF IN A PROPER AND LEGAL MANNER PER FEDERAL, STATE, AND OR LOCAL LAWS AND ORDINANCES.
- EXISTING PAVEMENT, SIDEWALKS CURBS DRIVEWAYS, ELECTRICAL TRANSFORMER, DITCHES, DRAINAGE PIPES AND STRUCTURES, FENCES, LAWNS, TREES, BUSHES, MAILBOXES, SIGNS, POWER POLES, IRRIGATION LINES AND EQUIPMENT, ETC. TO REMAIN SHALL BE PROTECTED FROM DAMAGE BY THE CONTRACTOR. ANY DAMAGE DURING CONSTRUCTION SHALL BE RESTORED, RECONSTRUCTED OR REPLACED BY THE CONTRACTOR AT THEIR EXPENSE. ALL DAMAGES SHALL BE RESTORED OR REPLACED TO AT LEAST THEIR ORIGINAL CONDITION OR AS REQUIRED OR DICTATED BY FEDERAL, STATE, COUNTY, CITY OR LOCAL REQUIREMENTS.
- SAW CUT THE EDGES OF PAVED AREAS CLEAN, NEAT AND TRUE TO LINE SO NO UNWANTED CHIPPING OR BREAKING OF EXISTING PAVEMENT TO REMAIN WILL OCCUR.
- IT IS THE RESPONSIBILITY OF THE CONTRACTOR TO INSPECT EACH DAY AND REMOVE ALL MUD, DIRT, GRAVEL AND LOOSE MATERIALS TRACKED, DUMPED, SPILLED OR WIND BLOWN FROM THIS SITE ONTO OTHER SITES, RIGHT OF WAYS, PUBLIC OR PRIVATE STREETS OR ROADS, DRIVEWAYS, YARDS OR SIDEWALKS. THE CONTRACTOR MUST CLEAN OR PICK UP DAILY IF NECESSARY. THE CONTRACTOR SHALL REDUCE THE AIRBORNE DUST DURING THE ENTIRE DEMOLITION SCHEDULE. WATER MAY BE USED AS A REDUCER.
- THE CONTRACTOR SHALL MAINTAIN EROSION CONTROL DEVICES AS SPECIFIED OR AS REQUIRED BY CITY/ COUNTY DURING DEMOLITION.
- IT IS THE CONTRACTOR'S RESPONSIBILITY TO NOTIFY ALL THE UTILITY COMPANIES AND DEPARTMENTS 72 HOURS BEFORE DEMOLITION IS TO START TO VERIFY ANY UTILITIES THAT MAY BE PRESENT ON SITE. ALL VERIFICATIONS, LOCATIONS, SIZE AND DEPTHS SHALL BE MADE BY THE APPROPRIATE UTILITY COMPANIES OR DEPARTMENTS. WHEN EXCAVATING AROUND OR OVER EXISTING UTILITIES, THE CONTRACTOR MUST NOTIFY THE UTILITY COMPANY SO A REPRESENTATIVE OF THE UTILITY MAY BE PRESENT DURING THE EXCAVATION TO INSTRUCT AND OBSERVE DURING THE EXCAVATION. CONTRACTOR TO CALL 811 OR 1-800-362-5544 BEFORE DIGGING.
- IT IS THE RESPONSIBILITY OF THE CONTRACTOR OR CONTRACTORS TO OBTAIN ALL FEDERAL, STATE, COUNTY, CITY, AND LOCAL PERMITS FOR ANY AND ALL WORK REQUIRED UNLESS OTHERWISE NOTED. THIS SHALL INCLUDE ALL SUBMITTALS AS REQUIRED INCLUDING LAND DISTURBANCE, AND STORMWATER RUNOFF CONTROL. THE CONTRACTOR OR CONTRACTORS ARE RESPONSIBLE TO PAY FOR ALL REQUIRED PERMITS BY ANY OR ALL AGENCIES UNLESS OTHERWISE NOTED BY THE CONTRACT OR SPECIFICATIONS.
- IT SHALL BE THE RESPONSIBILITY OF THE CONTRACTOR TO VERIFY WITH EACH UTILITY COMPANY AND OR AGENT WHO IS RESPONSIBLE TO REMOVE OR RELOCATE EACH EXISTING UTILITY. IF FURTHER SHALL BE THE RESPONSIBILITY OF THE CONTRACTOR TO BEAR THE COST FOR THE REMOVAL, TERMINATION OR RELOCATION OF UTILITIES IF THE RESPONSIBILITY IS NOT COVERED BY THE UTILITY COMPANY.
- THE UTILITIES INDICATED ON THESE PLANS AND ON THE SURVEY MAY NOT BE A COMPLETE INVENTORY OF ALL THE EXISTING UTILITIES PRESENT ON AND AROUND THIS SITE. THE LOCATIONS AND SIZE OF THESE UTILITIES ARE APPROXIMATE. THIS INFORMATION WAS GATHERED OR SUPPLIED FROM OTHERS AND USED BY THE ARCHITECT AND OR ENGINEER AND MAY NOT BE ACTUAL. THE ARCHITECT AND OR ENGINEER MAY NOT BE HELD LIABLE FOR ANY INCORRECT OR MISLEADING UTILITY INFORMATION INDICATED, IMPLIED OR NOT INDICATED ON THESE PLANS.
- ALL CONTRACTORS MUST TAKE PARTICULAR CARE WHEN EXCAVATING IN AND AROUND EXISTING UTILITY LINES AND EQUIPMENT. ACTUAL FIELD LOCATIONS OF ALL THE EXISTING UTILITIES ARE THE CONTRACTORS RESPONSIBILITY AND MUST BE LOCATED EITHER BY THE REPRESENTATIVE OF THE UTILITY COMPANY OR BY A PRIVATE UNDERGROUND UTILITY LOCATING COMPANY PRIOR TO THE START OF DEMOLITION ACTIVITIES.
- REMOVAL OF EXISTING CONCRETE OR OTHER PAVED AREAS INDICATED ON THE PLANS SHALL INCLUDE ALL AGGREGATE BASE MATERIALS IF REQUIRED. AREAS TO BE REMOVED SHALL BE SAW CUT CLEAN, NEAT AND TRUE TO LINE. REMOVE ALL NONORGANIC MATTER THAT WOULD INTERFERE WITH THE GROWTH OF TURF OR PLANT MATERIAL IN AREAS TO BE PLANTED.
- THE CONTRACTOR SHALL NOTIFY THE OWNER PRIOR TO COMMENCEMENT OF DEMOLITION OPERATIONS. NO DEMOLITION, GRADING OR OTHER WORK SHALL COMMENCE UNTIL A COORDINATION MEETING HAS BEEN HELD BETWEEN THE CITY AND CONTRACTOR.

NOTE: CONTRACTOR TO CONFIRM LOCATION OF ALL EXISTING SITE UTILITIES AND REPAIR AND REESTABLISH ANY UTILITIES DISTURBED DURING CONSTRUCTION ACTIVITIES.

SOFTBALL DEMOLITION PLAN

SCALE: 1" = 20'-0"



CAUTION !!
THE LOCATIONS OF ALL EXISTING UNDERGROUND UTILITIES INDICATED ON THESE PLANS ARE APPROXIMATE. THE CONTRACTOR SHALL VERIFY THE LOCATION AND DEPTH OF ALL UTILITIES PRIOR TO THE START OF CONSTRUCTION. ALL BASE CONSTRUCTION WORK, SYNTHETIC TURF SURFACING AND SAFETY POURED IN PLACE SURFACING INSTALL IS TO BE PERFORMED BY (1) SINGULAR (SYNTHETIC TURF/POURED IN PLACE SURFACING MANUFACTURE APPROVED/CERTIFIED) CONTRACTOR

LOCATIONS GIVEN ARE APPROXIMATE AND ARE TO BE SITE VERIFIED PRIOR TO THE START OF CONSTRUCTION. ALL BASE CONSTRUCTION WORK, SYNTHETIC TURF SURFACING AND SAFETY POURED IN PLACE SURFACING INSTALL IS TO BE PERFORMED BY (1) SINGULAR (SYNTHETIC TURF/POURED IN PLACE SURFACING MANUFACTURE APPROVED/CERTIFIED) CONTRACTOR

**MSD PIKE TOWNSHIP
PIKE HIGH SCHOOL
BASEBALL/SOFTBALL
RENOVATIONS**
5401 W. 71ST STREET
INDIANAPOLIS, IN. 46268

MSD PIKE TOWNSHIP

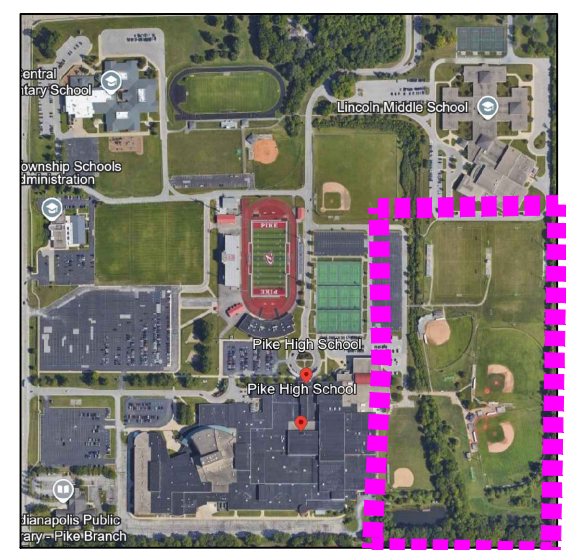


ARCHITECT



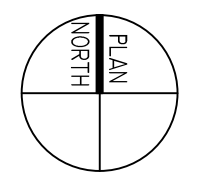
317-848-0966

WWW.FHAI.COM

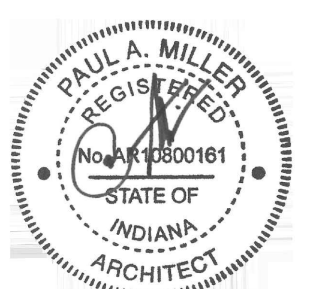


BASEBALL / SOFTBALL
PROJECT LIMITS

KEY PLAN



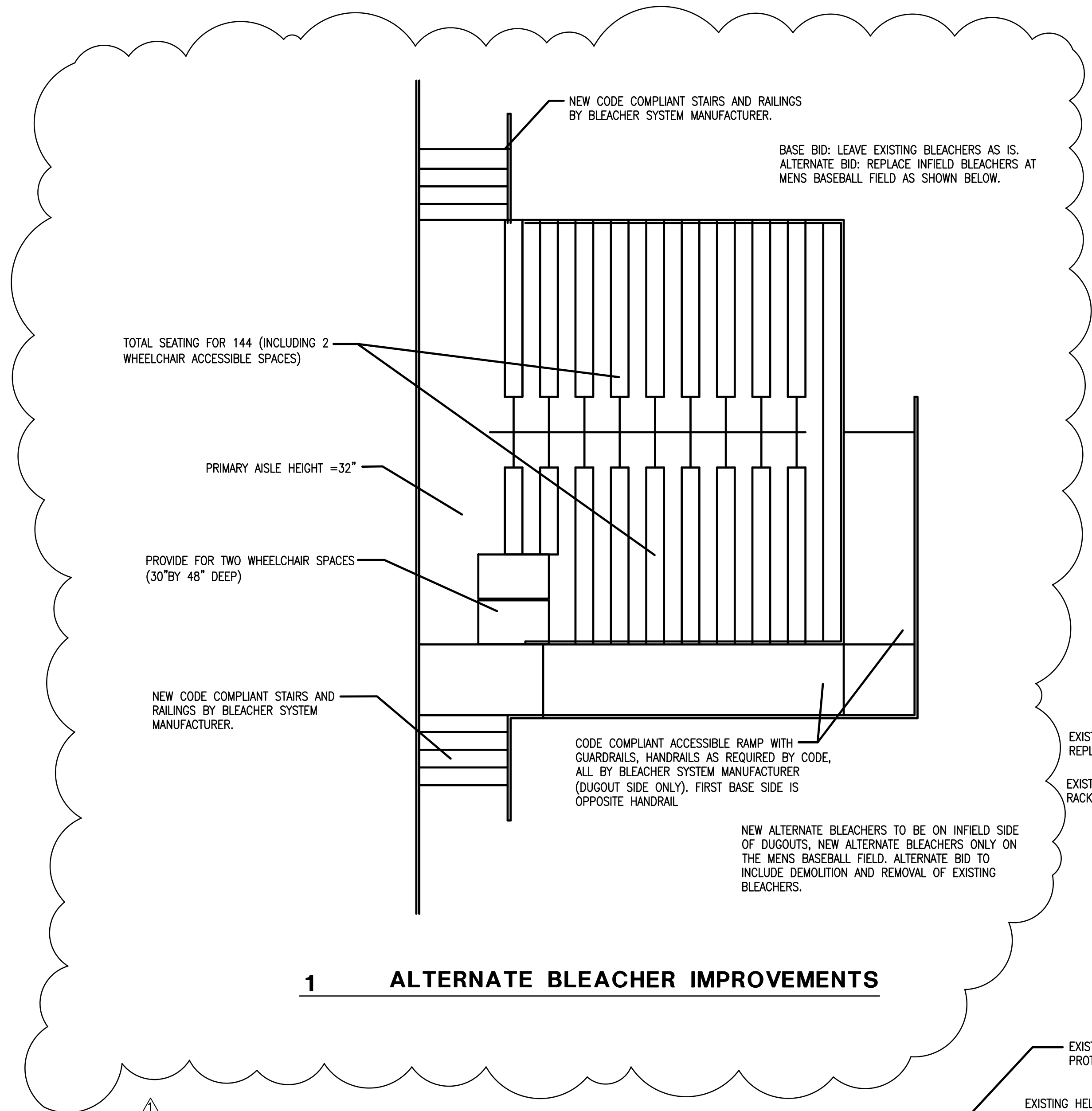
100% CONSTRUCTION DOCUMENTS



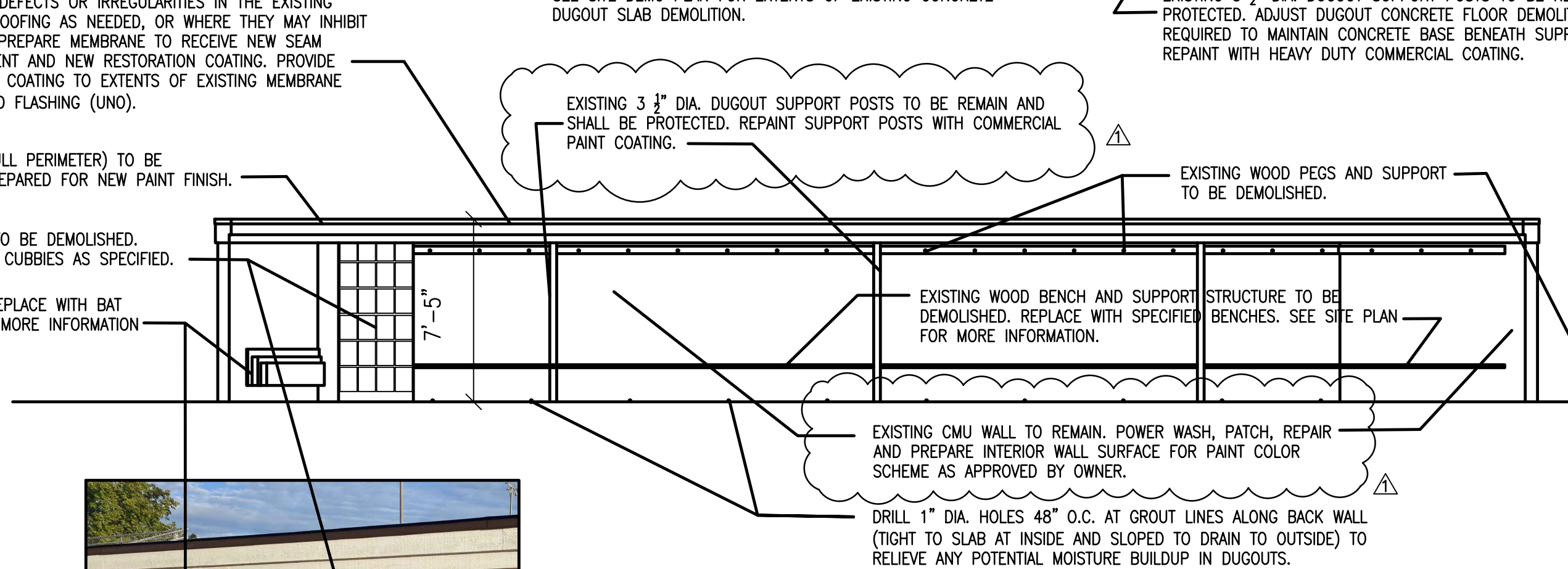
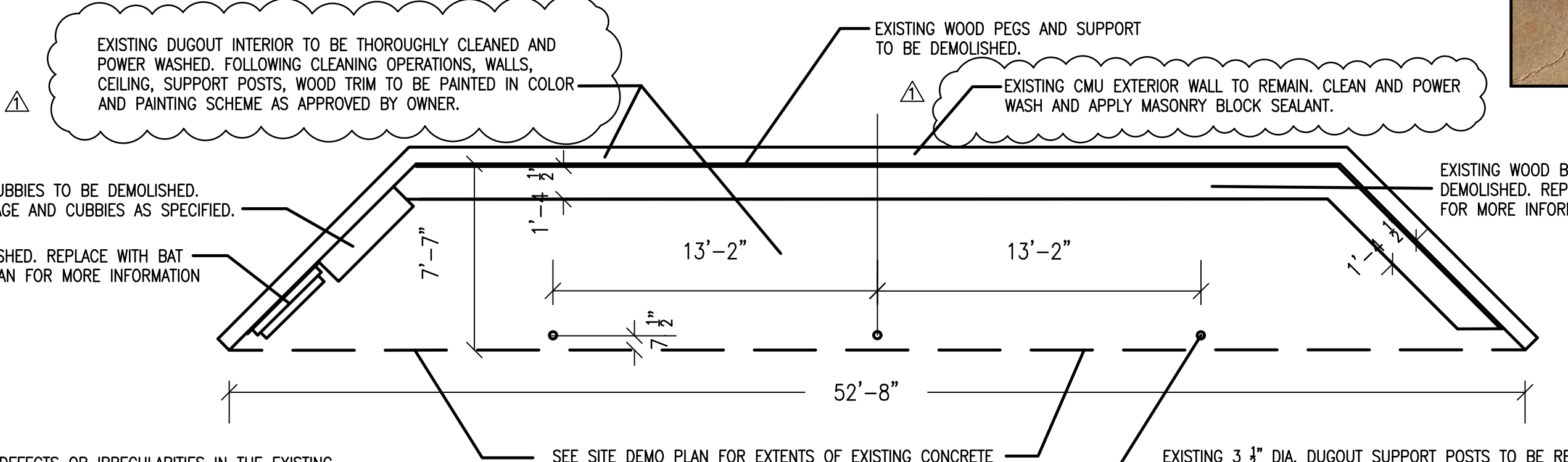
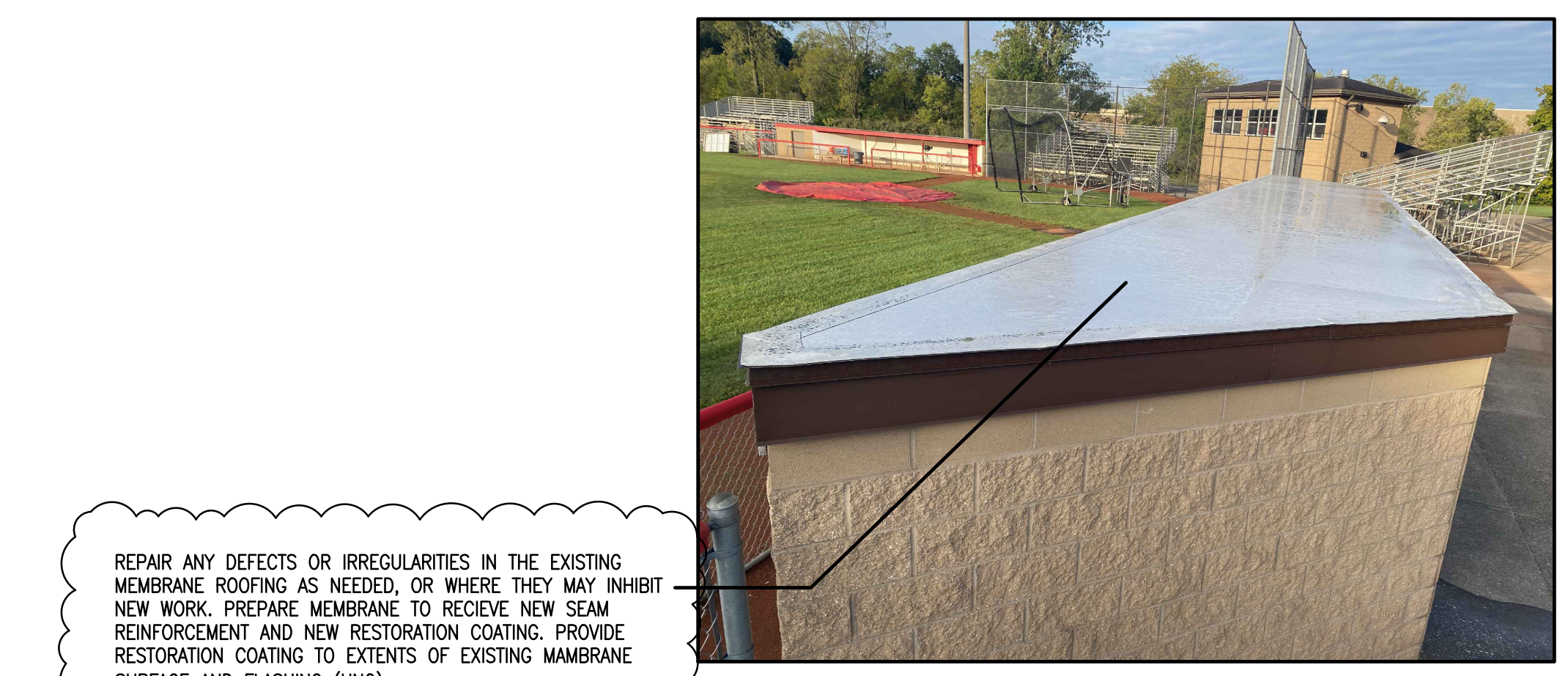
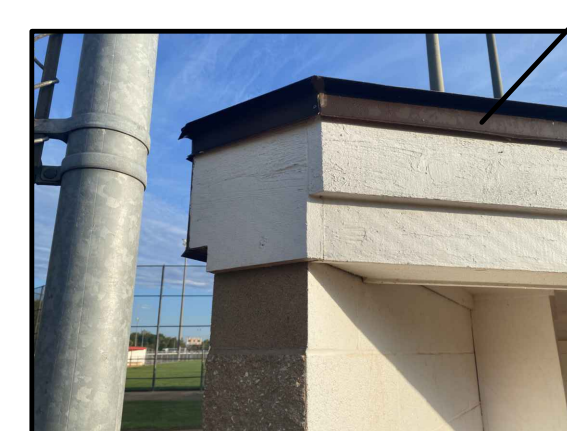
PROJECT MANAGER: PW
DRAWN BY: JB,EB
PROJECT NUMBER: 224064.00
PROJECT CONSTRUCTION ISSUE DATE: 10-03-2024

REV NO.	DESCRIPTION	DATE
△	ADDENDUM #1	10/17/2024

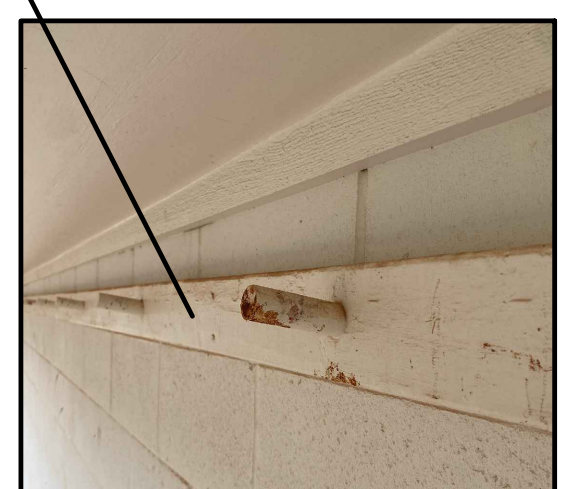
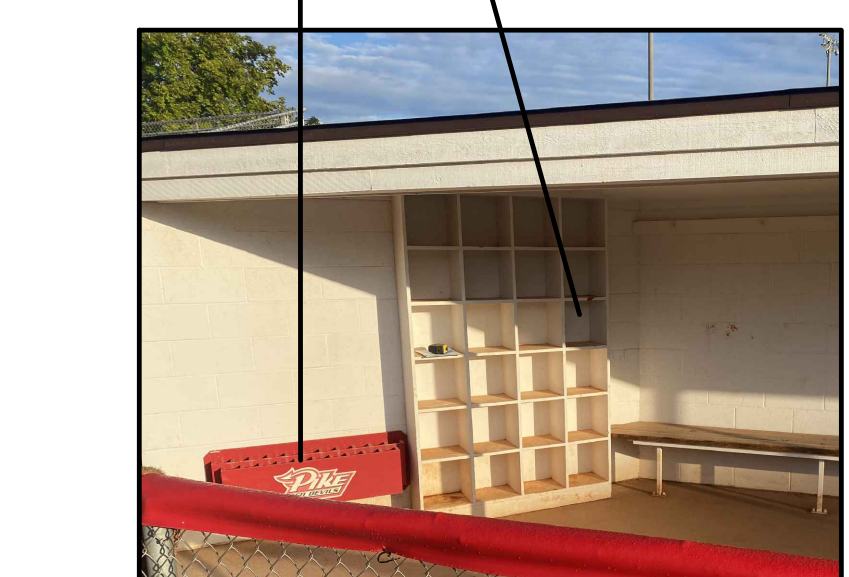
DETAILS
SD4.10



1 ALTERNATE BLEACHER IMPROVEMENTS



2 DUGOUT PLAN AND ELEVATION



REPAIR ANY DEFECTS OR IRREGULARITIES IN THE EXISTING MEMBRANE ROOFING AS NEEDED, OR WHERE THEY MAY INHIBIT NEW WORK. PREPARE MEMBRANE TO RECEIVE NEW SEAM REINFORCEMENT AND NEW RESTORATION COATING. PROVIDE RESTORATION COATING TO EXTENTS OF EXISTING MEMBRANE SURFACE AND FLASHING (UNO).

EXISTING DUGOUT INTERIOR TO BE THOROUGHLY CLEANED AND POWER WASHED. FOLLOWING CLEANING OPERATIONS, WALLS, CEILING, SUPPORT POSTS, WOOD TRIM TO BE PAINTED IN COLOR AND PAINTING SCHEME AS APPROVED BY OWNER.

EXISTING WOOD PEGS AND SUPPORT TO BE DEMOLISHED.

EXISTING CMU EXTERIOR WALL TO REMAIN. CLEAN AND POWER WASH AND APPLY MASONRY BLOCK SEALANT.

EXISTING WOOD BENCH AND SUPPORT STRUCTURE TO BE DEMOLISHED. REPLACE WITH SPECIFIED BENCHES. SEE SITE PLAN FOR MORE INFORMATION.

EXISTING HELMET STORAGE AND CUBBIES TO BE DEMOLISHED. REPLACE WITH NEW HELMET STORAGE AND CUBBIES AS SPECIFIED.

EXISTING BAT RACK TO BE DEMOLISHED. REPLACE WITH BAT RACKS AS SPECIFIED. SEE SITE PLAN FOR MORE INFORMATION.

REPAIR ANY DEFECTS OR IRREGULARITIES IN THE EXISTING MEMBRANE ROOFING AS NEEDED, OR WHERE THEY MAY INHIBIT NEW WORK. PREPARE MEMBRANE TO RECEIVE NEW SEAM REINFORCEMENT AND NEW RESTORATION COATING. PROVIDE RESTORATION COATING TO EXTENTS OF EXISTING MEMBRANE SURFACE AND FLASHING (UNO).

EXISTING 3 1/2\"/>

EXISTING 3 1/2\"/>

EXISTING WOOD PEGS AND SUPPORT TO BE DEMOLISHED.

EXISTING WOOD BENCH AND SUPPORT STRUCTURE TO BE DEMOLISHED. REPLACE WITH SPECIFIED BENCHES. SEE SITE PLAN FOR MORE INFORMATION.

EXISTING CMU WALL TO REMAIN. POWER WASH, PATCH, REPAIR AND PREPARE INTERIOR WALL SURFACE FOR PAINT COLOR SCHEME AS APPROVED BY OWNER.

DRILL 1\"/>

EXISTING DRIP EDGE FLASHING (FULL PERIMETER) TO BE PROTECTED AND CLEANED AND PREPARED FOR NEW PAINT FINISH.

EXISTING HELMET STORAGE AND CUBBIES TO BE DEMOLISHED. REPLACE WITH NEW HELMET STORAGE AND CUBBIES AS SPECIFIED.

EXISTING BAT RACK TO BE DEMOLISHED. REPLACE WITH BAT RACKS AS SPECIFIED. SEE SITE PLAN FOR MORE INFORMATION.