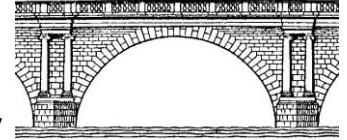


# ADAMS COUNTY ENGINEER

201 N POLK ST., MONROE, IN 46772

Office: 260-692-6551 email: nrumschlag@adamscounty.in.gov



## ADAMS COUNTY

### County Road 700 South Reconstruction

### Project No. 2024-11

### ADDENDUM #1

Date: October 30, 2024

The attention of all prospective Bidders on the subject project is directed to the following change in project specifications:

Replace C3.0 Storm Sewer P&P

See attached plan sheet.

Replace C4.0 Detailed Grading Plan

See attached plan sheet.

Replace C5.0 Erosion Control Plan

See attached plan sheet.

Revise Bid Tab quantities sheet

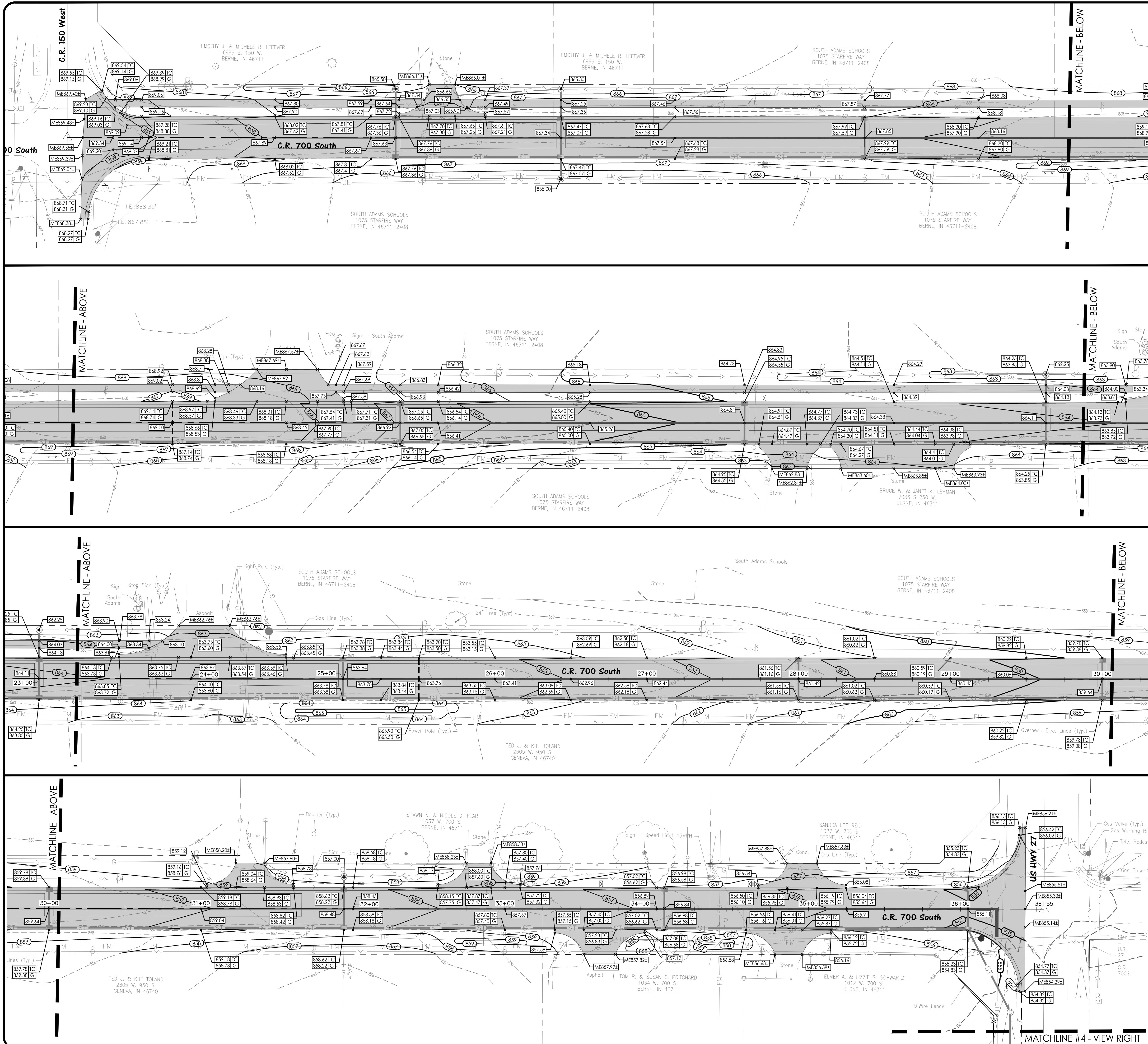
See attached sheet.

Please acknowledge receipt of this Addendum in final proposal.

Sincerely,

Nate Rumschlag, PE, MCM  
County Engineer



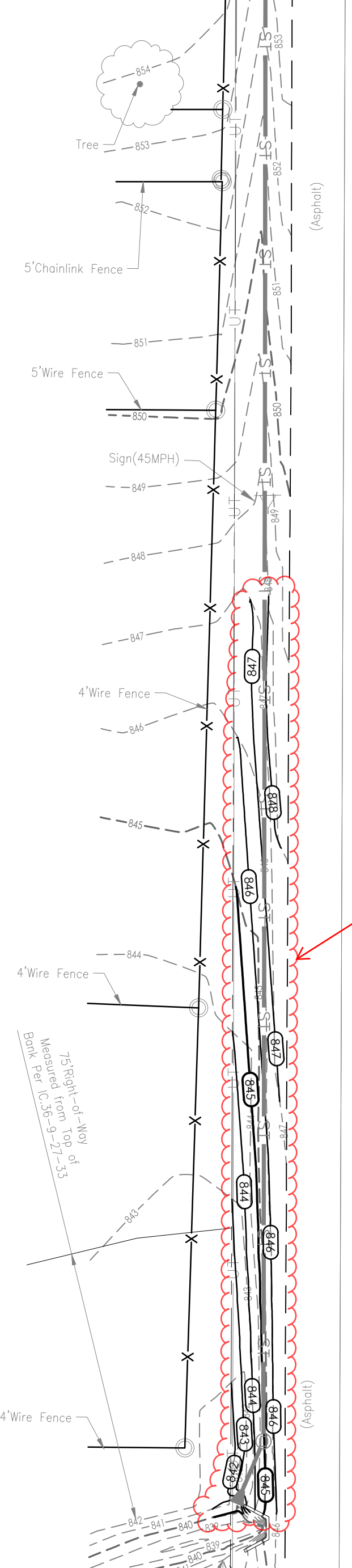


**GRADING LEGEND**

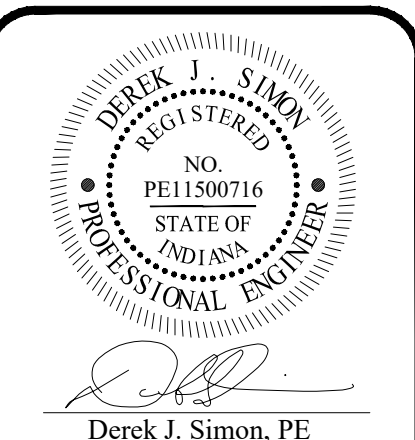
	FINISH GRADE ELEVATION
	(TC) TOP OF CURB / (G) GUTTER ELEVATION
	(ME) MATCH EXISTING ELEVATION
	EXISTING MAJOR CONTOUR (5' INTERVAL)
	EXISTING MINOR CONTOUR (1' INTERVAL)
	PROPOSED MAJOR CONTOUR (5' INTERVAL)
	PROPOSED MINOR CONTOUR (1' INTERVAL)
	DRAINAGE SWALE
	RIDGE LINE / GRADE BREAK LINE

- GRADING PLAN NOTES:**
- ALL ELEVATIONS AT CONSTRUCTION LIMITS SHALL MATCH EXISTING GRADE.
  - TOPSOIL SHALL BE PLACED IN ALL LANDSCAPE AND YARD AREAS. TOPSOIL SHALL BE SPREAD TO A MINIMUM DEPTH OF 4 INCHES UNLESS NOTED OTHERWISE.
  - MAINTAIN SITE DRAINAGE AT ALL TIMES DURING EARTHWORK OPERATIONS. THE CONTRACTOR SHALL BE RESPONSIBLE FOR PROVIDING TEMPORARY DRAINAGE FACILITIES IF NECESSARY THROUGHOUT CONSTRUCTION.
  - CONTOURS SHOW GRADING INTENT. THE CONTRACTOR MUST USE PROPOSED SPOT GRADE ELEVATIONS TO BUILD SITE. CONTACT ENGINEER IF ADDITIONAL SPOT GRADES ARE NEEDED FOR CONSTRUCTION.
  - PAVEMENT AREAS SHALL BE CONSTRUCTED OF SUITABLE FILL MATERIAL AND COMPACTED PER DETAILS AND/OR SPECIFICATIONS. FILL AREAS FOR PAVEMENTS ARE TO BE STRIPPED OF ALL TOPSOIL PRIOR TO PLACEMENT OF FILL.
  - ANY DISCREPANCIES OR CONFLICTS WHICH BECOME APPARENT BEFORE OR DURING CONSTRUCTION SHALL BE BROUGHT TO THE ATTENTION OF THE DESIGN ENGINEER PRIOR TO CONSTRUCTION SO THAT CLARIFICATION OR REDESIGN MAY OCCUR.
  - SEE UTILITY PLAN SHEETS FOR ALL SEWER INVERT AND RIM ELEVATIONS.
  - CONTRACTOR SHALL BE RESPONSIBLE FOR CHECKING THAT STAKED GRADES MATCH DESIGN ELEVATIONS AND POSITIVE DRAINAGE TO STORMWATER SYSTEM IS ACHIEVED. CONTACT ENGINEER IF DESIGN ELEVATIONS DO NOT PROVIDE POSITIVE DRAINAGE.
  - ALL SUBGRADE AREAS WITHIN PAVED AREAS SHALL BE COMPACTED TO 95% OF MAXIMUM DRY DENSITY PER STANDARD PROCTOR ASTM D-698. ALL SUBGRADE AREAS WITHIN LAWN AREAS SHALL BE COMPACTED TO 90% OF MAXIMUM DRY DENSITY PER STANDARD PROCTOR ASTM D-698.

**MATCHLINE #4 - VIEW LOWER LEFT**



**MATCHLINE #4 - VIEW RIGHT**



Derek J. Simon, PE  
 The concepts, ideas, designs, plans, details, etc. shown on this document are the property of M.S. Engineering, LLC, and were created for use on this specific project. None of the concepts, ideas, designs, plans, details, etc. shall be used by any person, firm, or corporation for any purpose without the expressed written consent of M.S. Engineering, LLC. The owner shall be permitted to retain copies for information and reference in connection with this project.

**M.S. Engineering**  
 ENGINEERING YOUR TOMORROW... TODAY  
 Fort Wayne Office  
 10064 Bant Creek Boulevard  
 Fort Wayne, IN 46825  
 Phone: (260) 489-8971  
 www.mslawsonsite.us  
 Monroe Office  
 221 Tower Drive  
 Monroe, IN 46772  
 Phone: (260) 692-6166

**PREPARED FOR:**  
 Adams Co. Hwy. Dept.  
 201 N. Polk St.  
 Monroe, IN 46772  
 260-692-6222

**REVISIONS:**

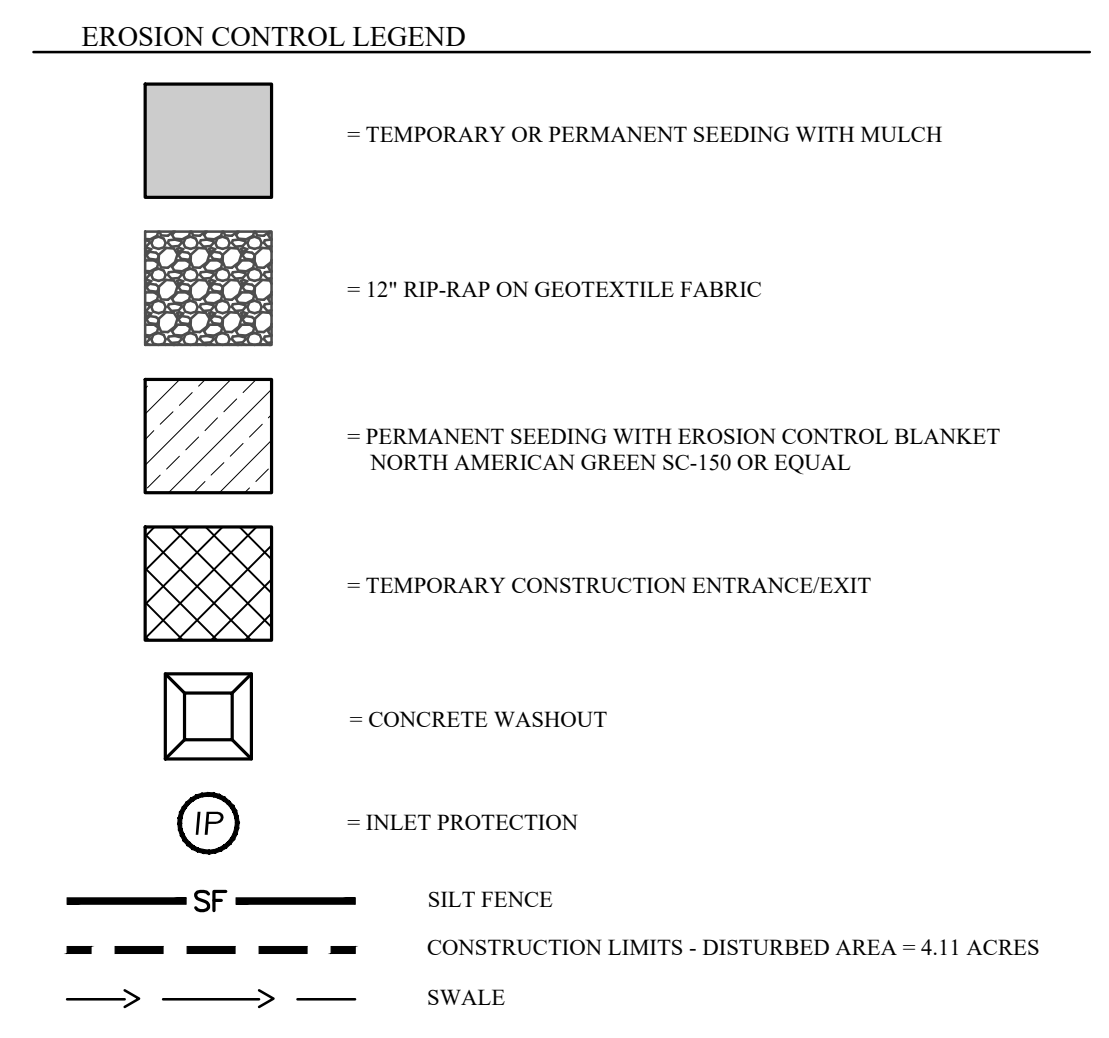
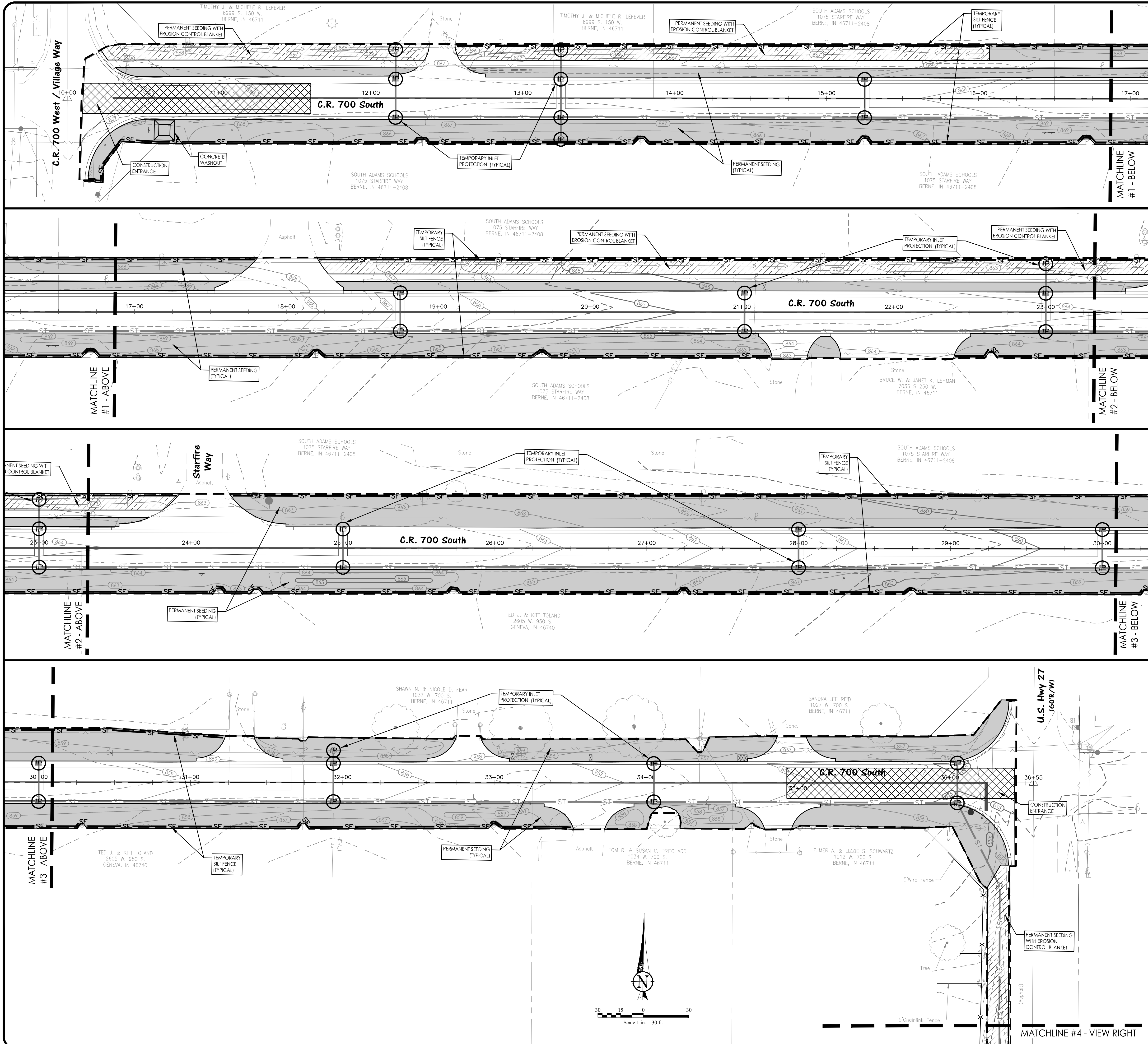
#	REVISION
10-28-24	Addendum - Revise storm sewer outlet

**Construction Plan Bid Set - October 9, 2024**

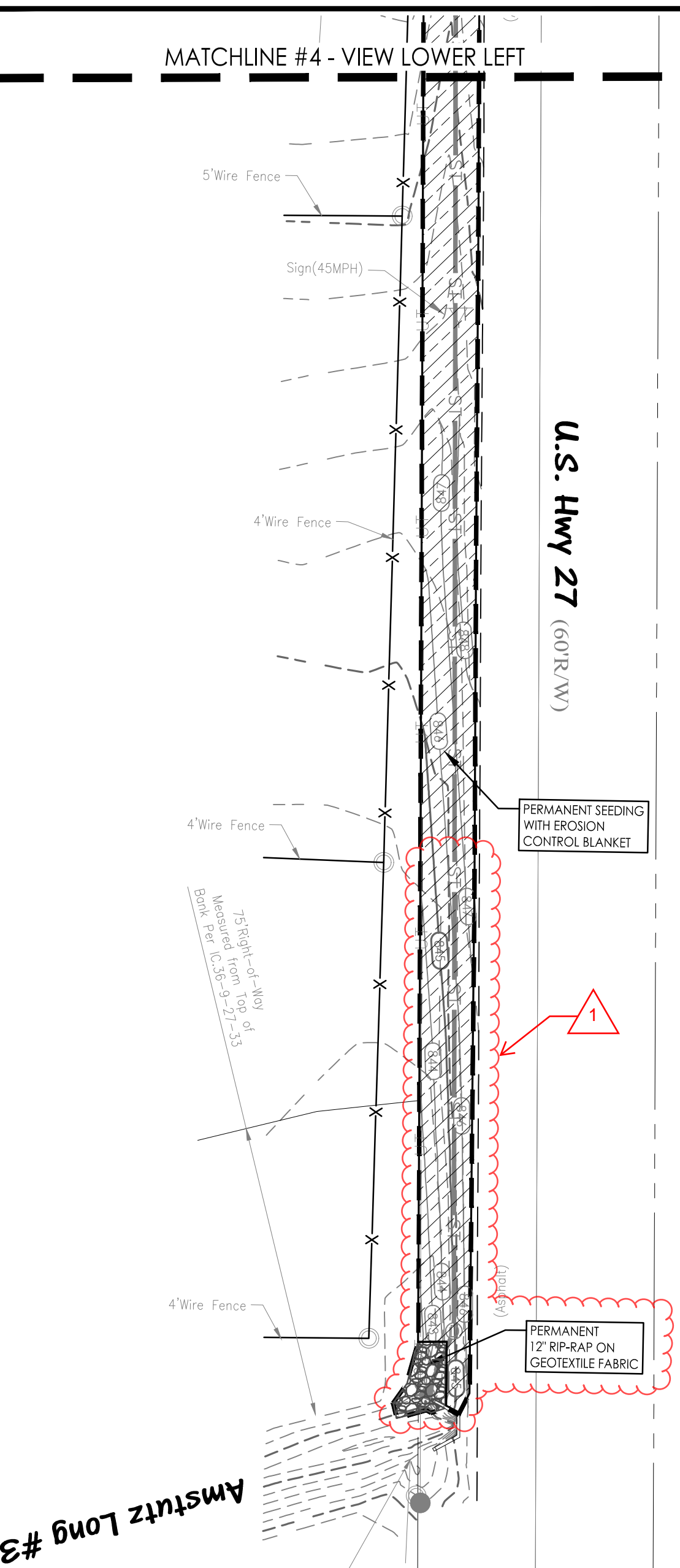
**County Road 700 South**  
 (Between Village Way & US-27)  
 Berne, Indiana 46711

**Road Improvement Plans**  
**Detailed Grading Plan**

Date: 10-09-2024  
 Design By: GML  
 Checked By: DTS  
 Project No.: 22116748  
 Sheet Number  
**C4.0**



- EROSION CONTROL NOTES**
- SEE SHEET C5.2 FOR SOILS MAP AND SOIL CHARACTERISTICS.
  - SEE SHEET C5.1 FOR EROSION CONTROL DETAILS.
  - SILT FENCE BARRIER SHALL BE INSTALLED PRIOR TO CONSTRUCTION.
  - A STABLE TEMPORARY GRAVEL CONSTRUCTION ENTRANCE/EXIT FROM THE CONSTRUCTION SITE SHALL BE INSTALLED PRIOR TO CONSTRUCTION.
  - SEE EROSION CONTROL SEQUENCE AND IMPLEMENTATION NOTES ON SHEET C5.2
  - EROSION CONTROL MAINTENANCE - SITE TO BE INSPECTED ONCE A WEEK AND AFTER EVERY RAINFALL EVENT. MAKE REPAIRS IMMEDIATELY.
  - EROSION CONTROL MEASURES SHALL BE MAINTAINED THROUGHOUT THE ENTIRE CONSTRUCTION PROCESS AND UNTIL ALL DISTURBED AREAS ARE STABILIZED.
  - UNVEGETATED AREAS THAT ARE SCHEDULED OR LIKELY TO BE INACTIVE FOR 7 DAYS OR MORE SHALL BE TEMPORARILY OR PERMANENTLY STABILIZED WITH MEASURES APPROPRIATE FOR THE SEASON TO MINIMIZE EROSION POTENTIAL. STABILIZATION ACTIVITIES MUST BE INITIATED BY THE END OF THE SEVENTH DAY THE AREA IS INACTIVE. STABILIZATION ACTIVITIES MUST BE COMPLETED WITHIN THE FOLLOWING 7 DAYS.
  - ALL DISTURBED YARD/GRASS AREAS MUST BE STABILIZED WITH PERMANENT SEEDING MEASURES. SEE SHEET C5.2 FOR GENERAL SEEDING AND SURFACE STABILIZATION PROCEDURES.
  - OWNER/CONTRACTOR SHALL INSTALL, IMPLEMENT, AND MAINTAIN ADDITIONAL EROSION CONTROL MEASURES AT REQUEST OF LOCAL AND/OR STATE STORMWATER AND EROSION CONTROL INSPECTORS TO ACHIEVE A STABILIZED SITE.



**Construction Plan Bid Set - October 9, 2024**

**County Road 700 South**  
(Between Village Way & US-27)  
Berne, Indiana 46711

**Road Improvement Plans**

**Erosion Control Plan**

Adams Co. Hwy. Dept.  
201 N. Polk St.  
Monroe, IN 46772  
260-692-6222

REVISIONS:

NO.	DESCRIPTION	DATE
10-28-24	#1 Addendum - Revise storm sewer outlet	

Date: 10-09-2024  
Design By: GML  
Checked By: DJS  
Project No.: 22116748  
Sheet Number

C5.0

www.mlse.com  
10060 Bart Creek Boulevard  
Fort Wayne, IN 46825  
Phone: (260) 489-8971

BID ITEMS - County Road 700 S					10/28/2024	
ITEM NO.	DESCRIPTION	UNIT	ESTIMATED QUANTITY	BID UNIT PRICE	BID PRICE	
1-1	CONSTRUCTION ENGINEERING	LSUM	1			
1-2	MAINTENANCE OF TRAFFIC	LSUM	1			
1-3	3RD PARTY TESTING AGENCY	LSUM	1			
1-4	PERFORMANCE BOND	LSUM	1			
1-5	MAINTENANCE BOND	LSUM	1			
1-6	MOBILIZATION AND DEMOBILIZATION	LSUM	1			
1-7	UTILITY COORDINATION, LOWER 1.5" PRIVATE SANITARY FORCE SERVICE LINES	EA	3			
1-8	UTILITY COORDINATION, RAISE/LOWER ELECTRIC SERVICE LINES BY UTILITY COMPANY (4 LOCATIONS)	LSUM	1			
1-9	UTILITY COORDINATION, REMOVE/REPLACE GUY WIRES, TEMPORARY POLE SUPPORT	LSUM	1			
1-10	UTILITY COORDINATION, REMOVE SANITARY FORCE MAIN WARNING RISER BY UTILITY COMPANY	EA	1			
1-11	MILL & REMOVE 2" ASPHALT PAVEMENT	SYD	3,660			
1-12	COMMON EXCAVATION (CUT & FILL, PIPE TRENCH SPOILS, REMOVAL OF ASPHALT & DRIVEWAYS)	CYS	10,889			
1-13	HAUL OFF EXCESS SOIL	CYS	1,983			
1-14	REMOVE CONCRETE CURB	LF	28			
1-15	REMOVE SIGN & POST	EA	7			
1-16	REMOVE CONCRETE FOUNDATION (OLD ELECTRIC DROP)	EA	1			
1-17	REMOVE STORM INLET	EA	4			
1-18	REMOVE STORM PIPE, 4-INCH (PVC & VCP)	LF	50			
1-19	REMOVE STORM PIPE, 6-INCH (VCP, HDPE, & CMP)	LF	103			
1-20	REMOVE STORM PIPE, 8-INCH (CMP)	LF	29			
1-21	REMOVE STORM PIPE, 10-INCH (CMP)	LF	65			
1-22	REMOVE STORM PIPE, 12-INCH (RCP)	LF	85			
1-23	REMOVE STORM PIPE, 12-INCH (CMP)	LF	32			
1-24	CAP STORM PIPE TO REMAIN	EA	3			
1-25	REMOVE MAILBOX AND PLACE IN TEMPORARY LOCATION	EA	6			
1-26	REMOVE CONCRETE PARKING BUMPER	EA	1			
1-27	TEMPORARY INLET PROTECTION, YARD GRATE SILT BARRIER	EA	5			
1-28	TEMPORARY SILT FENCE	LF	4,064			
1-29	TEMPORARY INLET PROTECTION, DANDY SACK (INSERT) BAG CURB INLET WITH CURB FILTER	EA	24			
1-30	OUTLET STRUCTURE RIP RAP, 12" OF d50=6" ON GEOTEXTILE FABRIC	SYS	21			
1-31	CONCRETE WASHOUT	EA	1			
1-32	EROSION CONTROL BLANKET, SC 150 OR EQUAL	SF	18,080			
1-33	PERMANENT SEEDING	SF	69,253			
1-34	COMPACTED AGGREGATE, NO. 53 BASE	TON	1,332			
1-35	HMA, 2" SURFACE, TYPE 'B', 12.5 mm	TON	793			
1-36	HMA, 2.5" INTERMEDIATE, TYPE 'B', 19.0 mm	TON	488			
1-37	HMA WEDGE & LEVEL (AVERAGE 3), INTERMEDIATE, TYPE 'B', 19.0 mm	TON	604			
1-38	COMPACTED AGGREGATE NO. 2 BASE (STONE DRIVEWAY)	TON	37			
1-39	CONCRETE ACCESSIBLE RAMP INCLUDING TRUNCATED DOME DETECTABLE WARNING SURFACE	EA	1			
1-40	DRIVEWAY, CONCRETE, 6 INCH	SYS	741			
1-41	SIDEWALK, CONCRETE, 4 INCH (ALTERNATE #1-Add for South Adams School Corp.)	SYS	698			
1-42	4" COMPACTED AGGREGATE, NO. 53 BASE (ALTERNATE #1-Add)	TON	116			
1-43	ROLL CURB AND GUTTER	LF	5,072			
1-44	DEPRESSED ROLL CURB	LF	204			
1-45	TRANSITION ROLL CURB	LF	46			
1-46	24" PRE-CAST CONCRETE END SECTION WITH	EA	1			
1-47	PIPE, HDPE, 6" (ALTERNATE #2-Deduct if existing pipe flow direction requires watertight pipe end cap)	LF	70			
1-48	PIPE TRENCH GRANULAR BACKFILL, #5, #8, OR #9 (ALTERNATE #2-Deduct)	TON	22			
1-49	PIPE TRENCH GRANULAR BACKFILL, #5, #8, OR #9	TON	3,574			
1-50	PIPE, HDPE, 12 INCH	LF	355			
1-51	PIPE, HDPE 15 INCH	LF	135			
1-52	PIPE, HDPE, 24 INCH	LF	2,367			
1-53	PIPE, RCP, 24 INCH	LF	430			
1-54	MANHOLE, 4' DIA.	EA	13			
1-55	INLET, 2x3 BOX	EA	13			
1-56	INLET, 24 INCH DIA.	EA	5			
1-57	CASTING, NEENAH R-1772 OR EQUAL	EA	2			
1-58	CASTING, NEENAH R-3501-TL OR EQUAL	EA	12			
1-59	CASTING, NEENAH R-3501-TR OR EQUAL	EA	12			
1-60	CASTING, NEENAH R-4342 OR EQUAL	EA	5			
1-61	STORM SEWER TESTING	LS	1			
1-62	STORM SEWER AS-BUILTS	LS	1			
1-63	LINE STRIPING, 4" SOLID DOUBLE YELLOW	LF	2,595			
1-64	STOP BAR, 24" WHITE THERMOPLASTIC	LF	19			
1-65	REPLACE MAILBOX IN PERMANENT LOCATION	EA	6			
1-66	REPLACE STOP SIGN AND POST	EA	2			
1-67	REPLACE SPEED LIMIT SIGN AND POST	EA	1			
1-68	REPLACE 'SCHOOL ZONE' SIGN AND POST	EA	1			
1-69	REPLACE 'SOUTH ADAMS FUTURE FARMERS OF AMERICA' SIGN (2 POST)	EA	1			
1-70	REPLACE 'TWO DIRECTION (DOUBLE ARROW)' SIGN	EA	1			
1-71	REPLACE 'STOP AHEAD' SIGN	EA	1			
1-72	REPLACE 'ADOPT A ROAD' SIGN	EA	1			
				<b>TOTAL:</b>		