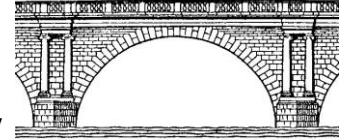


ADAMS COUNTY ENGINEER

201 N POLK ST., MONROE, IN 46772

Office: 260-692-6551 email: nrumschlag@adamscounty.in.gov



ADAMS COUNTY

County Road 700 South Reconstruction

Project No. 2024-11

ADDENDUM #2

Date: November 8, 2024

The attention of all prospective Bidders on the subject project is directed to the following change in project specifications:

Revise Bid Tab quantities sheet

See attached bid tab quantities sheet for clarification to bid items #48 and #49. The description for each item was revised to say, "PIPE TRENCH GRANULAR BEDDING & BACKFILL" and the aggregate #s have been removed. The estimated quantity of each item represents total tons for pipe trench bedding and backfill aggregates. Acceptable bedding aggregates for flexible and rigid pipes are listed in technical specification sections 2.16 and 2.17. Acceptable full depth 'special' backfill aggregates for all storm pipes are listed in technical specification section 2.18.

Replace C6.1 Construction Details

See attached plan sheet with added detail for general rigid pipe bedding

Please acknowledge receipt of this Addendum in final proposal.

Sincerely,

Nate Rumschlag, PE, MCM
County Engineer

BID ITEMS - County Road 700 S					10/31/2024	
ITEM NO.	DESCRIPTION	UNIT	ESTIMATED QUANTITY	BID UNIT PRICE	BID PRICE	
1-1	CONSTRUCTION ENGINEERING	LSUM	1			
1-2	MAINTENANCE OF TRAFFIC	LSUM	1			
1-3	3RD PARTY TESTING AGENCY	LSUM	1			
1-4	PERFORMANCE BOND	LSUM	1			
1-5	MAINTENANCE BOND	LSUM	1			
1-6	MOBILIZATION AND DEMOBILIZATION	LSUM	1			
1-7	UTILITY COORDINATION, LOWER 1.5" PRIVATE SANITARY FORCE SERVICE LINES	EA	3			
1-8	UTILITY COORDINATION, RAISE/LOWER ELECTRIC SERVICE LINES BY UTILITY COMPANY (4 LOCATIONS)	LSUM	1			
1-9	UTILITY COORDINATION, REMOVE/REPLACE GUY WIRES, TEMPORARY POLE SUPPORT	LSUM	1			
1-10	UTILITY COORDINATION, REMOVE SANITARY FORCE MAIN WARNING RISER BY UTILITY COMPANY	EA	1			
1-11	MILL & REMOVE 2" ASPHALT PAVEMENT	SYD	3,660			
1-12	COMMON EXCAVATION (CUT & FILL, PIPE TRENCH SPOILS, REMOVAL OF ASPHALT & DRIVEWAYS)	CYS	10,889			
1-13	HAUL OFF EXCESS SOIL	CYS	1,983			
1-14	REMOVE CONCRETE CURB	LF	28			
1-15	REMOVE SIGN & POST	EA	7			
1-16	REMOVE CONCRETE FOUNDATION (OLD ELECTRIC DROP)	EA	1			
1-17	REMOVE STORM INLET	EA	4			
1-18	REMOVE STORM PIPE, 4-INCH (PVC & VCP)	LF	50			
1-19	REMOVE STORM PIPE, 6-INCH (VCP, HDPE, & CMP)	LF	103			
1-20	REMOVE STORM PIPE, 8-INCH (CMP)	LF	29			
1-21	REMOVE STORM PIPE, 10-INCH (CMP)	LF	65			
1-22	REMOVE STORM PIPE, 12-INCH (RCP)	LF	85			
1-23	REMOVE STORM PIPE, 12-INCH (CMP)	LF	32			
1-24	CAP STORM PIPE TO REMAIN	EA	3			
1-25	REMOVE MAILBOX AND PLACE IN TEMPORARY LOCATION	EA	6			
1-26	REMOVE CONCRETE PARKING BUMPER	EA	1			
1-27	TEMPORARY INLET PROTECTION, YARD GRATE SILT BARRIER	EA	5			
1-28	TEMPORARY SILT FENCE	LF	4,064			
1-29	TEMPORARY INLET PROTECTION, DANDY SACK (INSERT) BAG CURB INLET WITH CURB FILTER	EA	24			
1-30	OUTLET STRUCTURE RIP RAP, 12" OF d50=6" ON GEOTEXTILE FABRIC	SYS	21			
1-31	CONCRETE WASHOUT	EA	1			
1-32	EROSION CONTROL BLANKET, SC 150 OR EQUAL	SF	18,080			
1-33	PERMANENT SEEDING	SF	69,253			
1-34	COMPACTED AGGREGATE, NO. 53 BASE	TON	1,332			
1-35	HMA, 2" SURFACE, TYPE 'B', 12.5 mm	TON	793			
1-36	HMA, 2.5" INTERMEDIATE, TYPE 'B', 19.0 mm	TON	488			
1-37	HMA WEDGE & LEVEL (AVERAGE 3), INTERMEDIATE, TYPE 'B', 19.0 mm	TON	604			
1-38	COMPACTED AGGREGATE NO. 2 BASE (STONE DRIVEWAY)	TON	37			
1-39	CONCRETE ACCESSIBLE RAMP INCLUDING TRUNCATED DOME DETECTABLE WARNING SURFACE	EA	1			
1-40	DRIVEWAY, CONCRETE, 6 INCH	SYS	741			
1-41	SIDEWALK, CONCRETE, 4 INCH (ALTERNATE #1-Add for South Adams School Corp.)	SYS	698			
1-42	4" COMPACTED AGGREGATE, NO. 53 BASE (ALTERNATE #1-Add)	TON	116			
1-43	ROLL CURB AND GUTTER	LF	5,072			
1-44	DEPRESSED ROLL CURB	LF	204			
1-45	TRANSITION ROLL CURB	LF	46			
1-46	24" PRE-CAST CONCRETE END SECTION WITH	EA	1			
1-47	PIPE, HDPE, 6" (ALTERNATE #2-Deduct if existing pipe flow direction requires watertight pipe end cap)	LF	70			
1-48	PIPE TRENCH GRANULAR BEDDING & BACKFILL (ALTERNATE #2-Deduct)	TON	22			
1-49	PIPE TRENCH GRANULAR BEDDING & BACKFILL	TON	3,574			
1-50	PIPE, HDPE, 12 INCH	LF	355			
1-51	PIPE, HDPE 15 INCH	LF	135			
1-52	PIPE, HDPE, 24 INCH	LF	2,367			
1-53	PIPE, RCP, 24 INCH	LF	430			
1-54	MANHOLE, 4' DIA.	EA	13			
1-55	INLET, 2x3 BOX	EA	13			
1-56	INLET, 24 INCH DIA.	EA	5			
1-57	CASTING, NEENAH R-1772 OR EQUAL	EA	2			
1-58	CASTING, NEENAH R-3501-TL OR EQUAL	EA	12			
1-59	CASTING, NEENAH R-3501-TR OR EQUAL	EA	12			
1-60	CASTING, NEENAH R-4342 OR EQUAL	EA	5			
1-61	STORM SEWER TESTING	LS	1			
1-62	STORM SEWER AS-BUILTS	LS	1			
1-63	LINE STRIPING, 4" SOLID DOUBLE YELLOW	LF	2,595			
1-64	STOP BAR, 24" WHITE THERMOPLASTIC	LF	19			
1-65	REPLACE MAILBOX IN PERMANENT LOCATION	EA	6			
1-66	REPLACE STOP SIGN AND POST	EA	2			
1-67	REPLACE SPEED LIMIT SIGN AND POST	EA	1			
1-68	REPLACE 'SCHOOL ZONE' SIGN AND POST	EA	1			
1-69	REPLACE 'SOUTH ADAMS FUTURE FARMERS OF AMERICA' SIGN (2 POST)	EA	1			
1-70	REPLACE 'TWO DIRECTION (DOUBLE ARROW)' SIGN	EA	1			
1-71	REPLACE 'STOP AHEAD' SIGN	EA	1			
1-72	REPLACE 'ADOPT A ROAD' SIGN	EA	1			
				TOTAL:		

The concepts, ideas, designs, plans, details, etc. shown on this document are the property of M&S Engineering, LLC, and were created for use on this specific project. None of the concepts, ideas, designs, plans, details, etc. shall be used by any person, firm, or corporation for any purpose without the expressed written consent of M&S Engineering, LLC. The owner shall be permitted to retain copies for information and reference in connection with this project.


M&S Engineering
 ENGINEERING YOUR TOMORROW... TODAY
 Fort Wayne Office
 10040 Hart Creek Boulevard
 Fort Wayne, IN 46825
 Phone: (260) 489-8571
 www.mswaebitsus.com

PREPARED FOR:
 Adams Co. Hwy. Dept.
 201 N. Polk St.
 Monroe, IN 46772
 260-692-6222

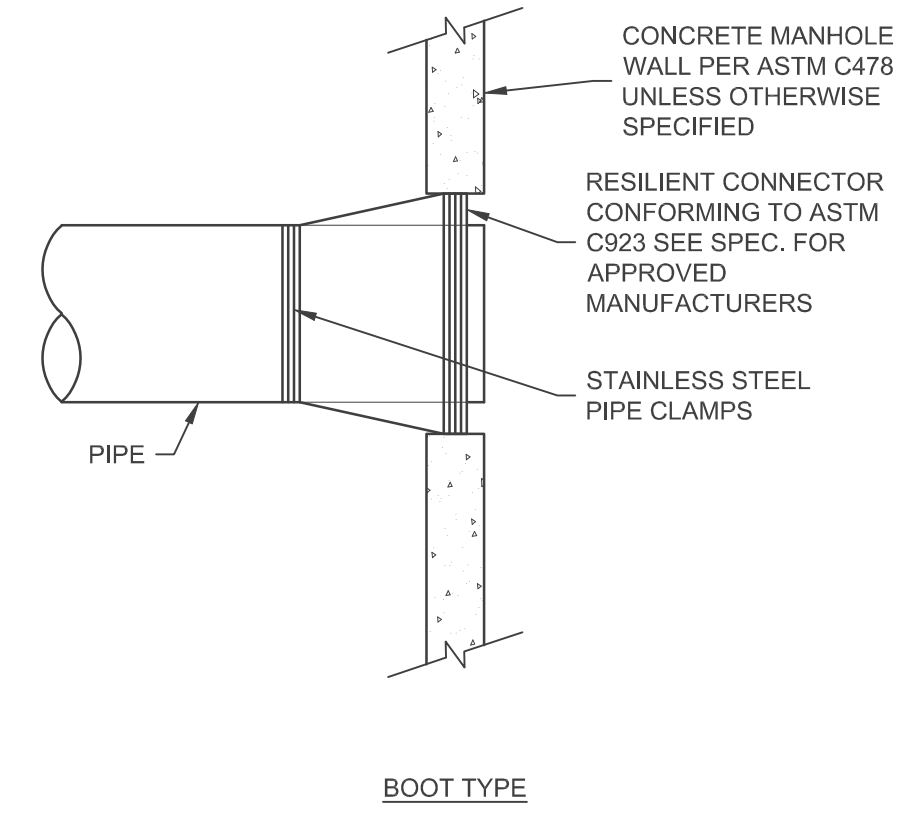
REVISIONS:

NO.	DATE	DESCRIPTION
#1	11-08-24	ADDendum - Add detail for general rigid pipe bedding
#2		

Construction Plan Bid Set - October 9, 2024
 County Road 700 South
 (Between Village Way & US-27)
 Berne, Indiana 46711
 Road Improvement Plans
 Construction Details

Date: 10-09-2024
 Design By: GML
 Checked By: DJS
 Project No.: 22116748

Sheet Number
C6.1

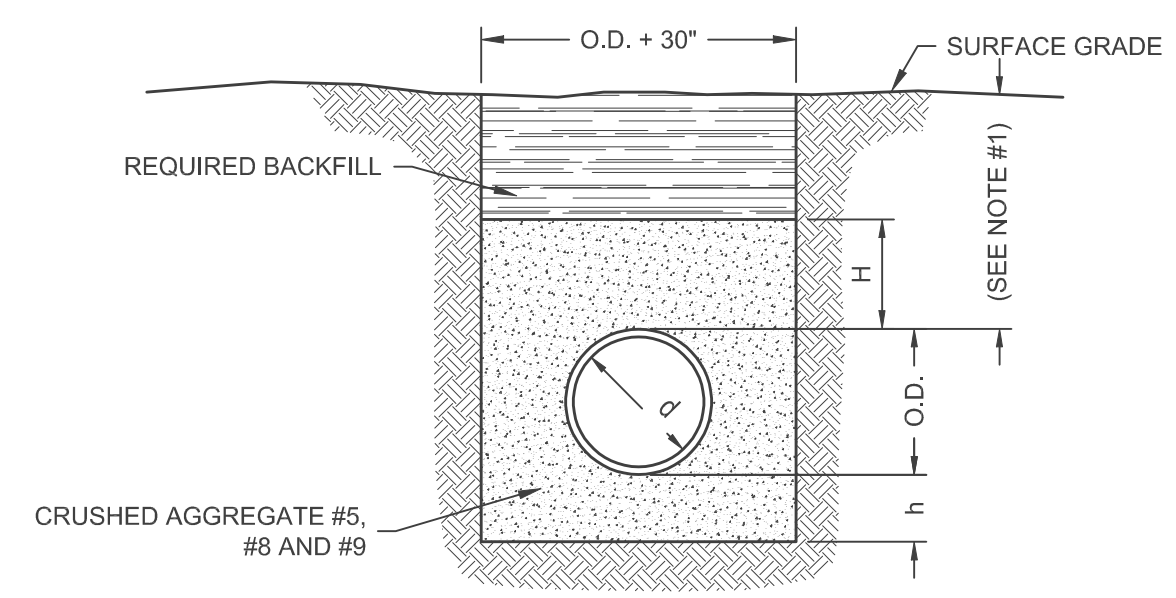


NOTE TO CONTRACTOR: IN-LIEU OF RUBBER BOOTS FOR STORM STRUCTURES, CONTRACTOR MAY INSTALL, BY HAND, NON-SHRINK DRY PACK GROUT MORTAR, 5000 PSI COMPRESSIVE STRENGTH MINIMUM.

CAUTION:
 1. WHEN INSTALLING PIPE STUBS FOR FUTURE PIPELINE, INSTALLATION OF ALL STUBS SHOULD PROPERLY RESTRAINED TO PREVENT ANY MOVEMENT.
 2. TYPICAL APPLICATION IS FOR PIPES 36" IN DIAMETER OR SMALLER.

PIPE CONNECTION TO MANHOLE
 (NOT TO SCALE)

CLASS 'F'
 * PVC, HDPE, FRP, DIP, PP & CMP are Considered Flexible Pipes

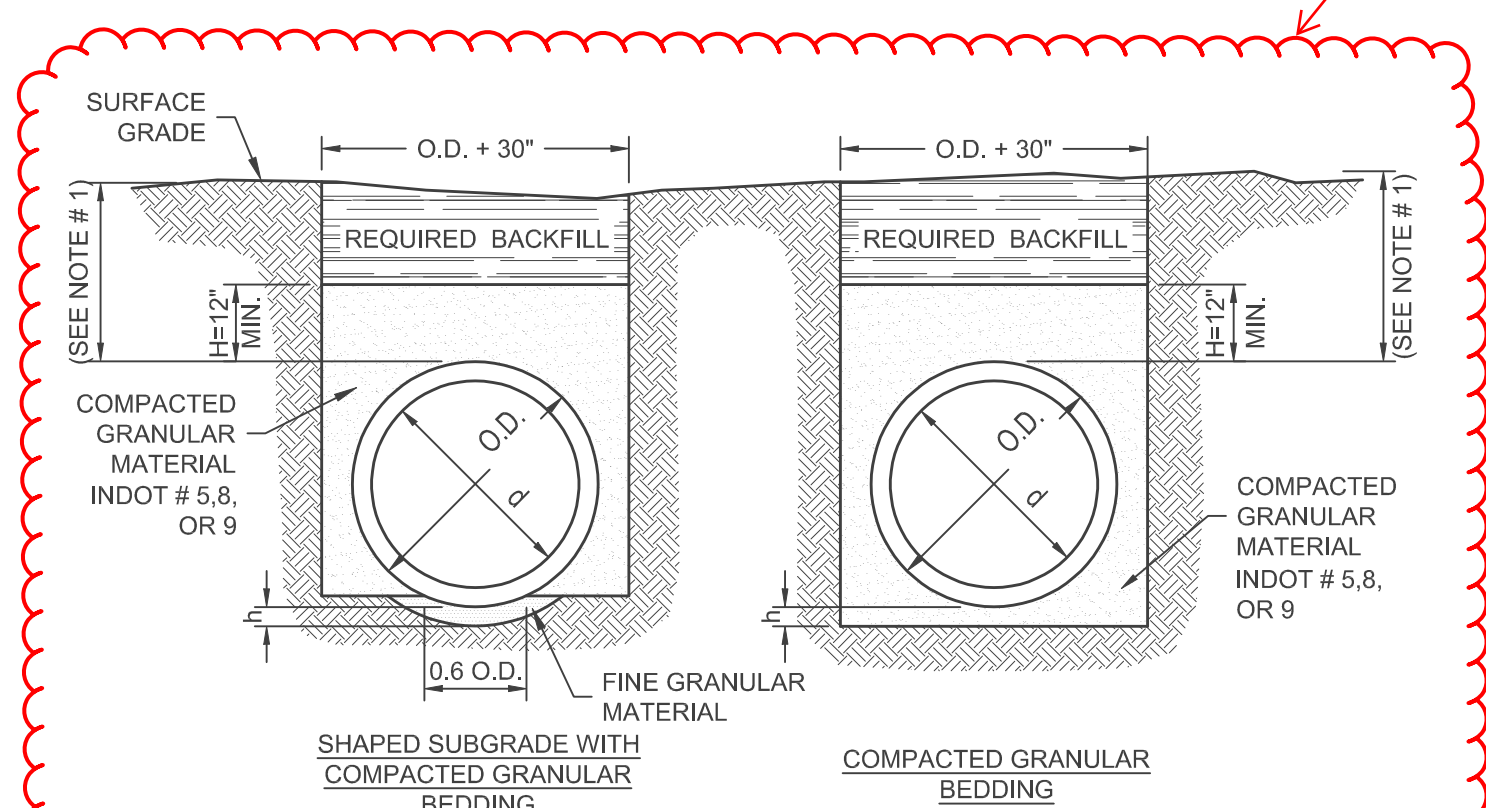


NOTE:
 FOR ROCK OR OTHER NON-COMPRESSIVE MATERIALS: THE TRENCH SHOULD BE OVER-EXCAVATED A MINIMUM OF 6" AND REFILLED WITH GRANULAR MATERIAL.

LEGEND:
 O.D. = OUTSIDE DIAMETER
 H = BACKFILL COVER ABOVE TOP OF PIPE;
 12" MINIMUM
 d = INSIDE DIAMETER
 h = $\frac{O.D.}{8}$; 4" MINIMUM

NOTES:
 1. MINIMUM COVER - STORMWATER 3', SANITARY 4', WATER 5'.
 2. FOR ROCK OR OTHER NON-COMPRESSIVE MATERIALS: THE TRENCH SHOULD BE OVER-EXCAVATED A MINIMUM OF 6" AND REFILLED WITH GRANULAR MATERIAL.

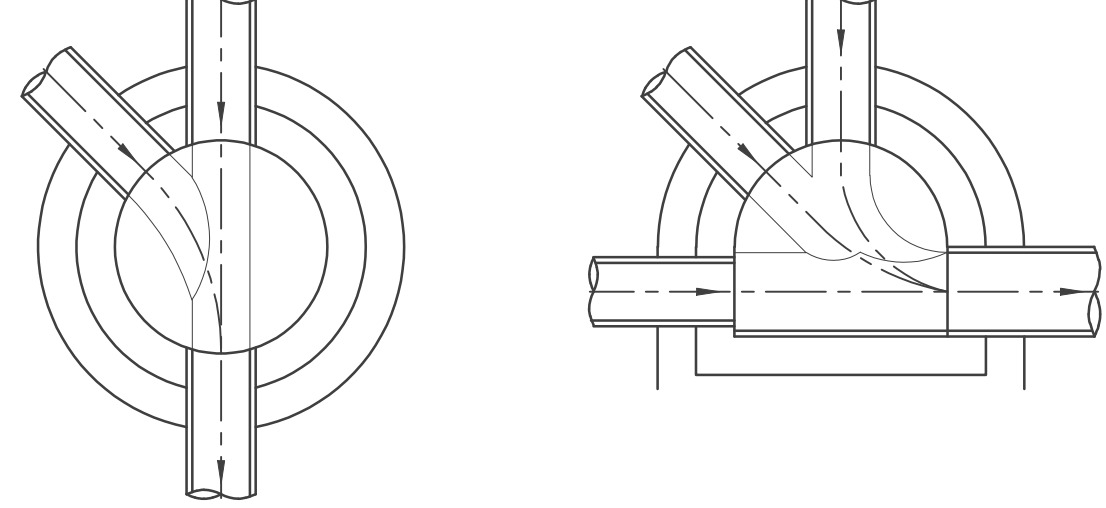
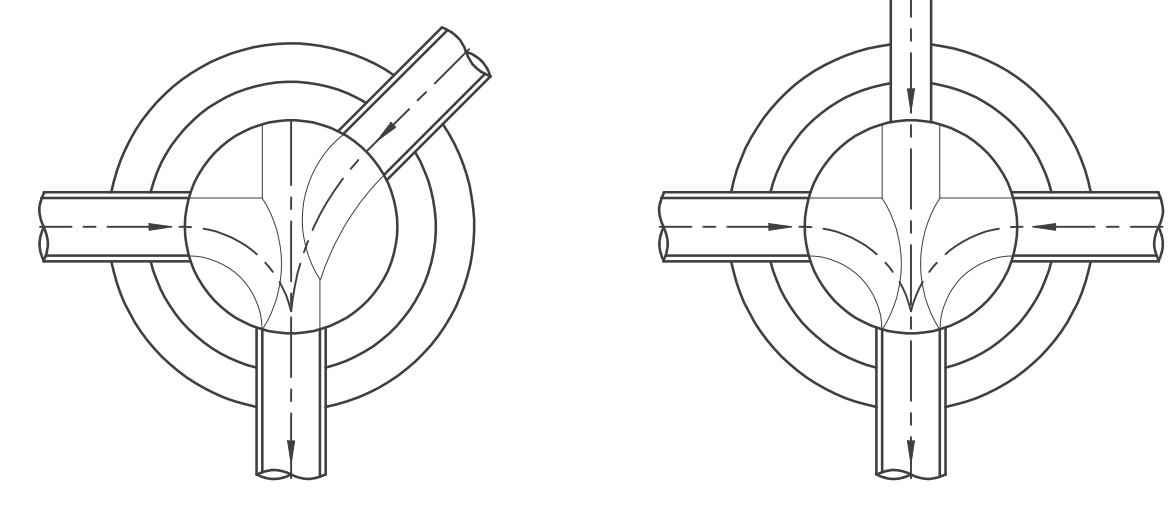
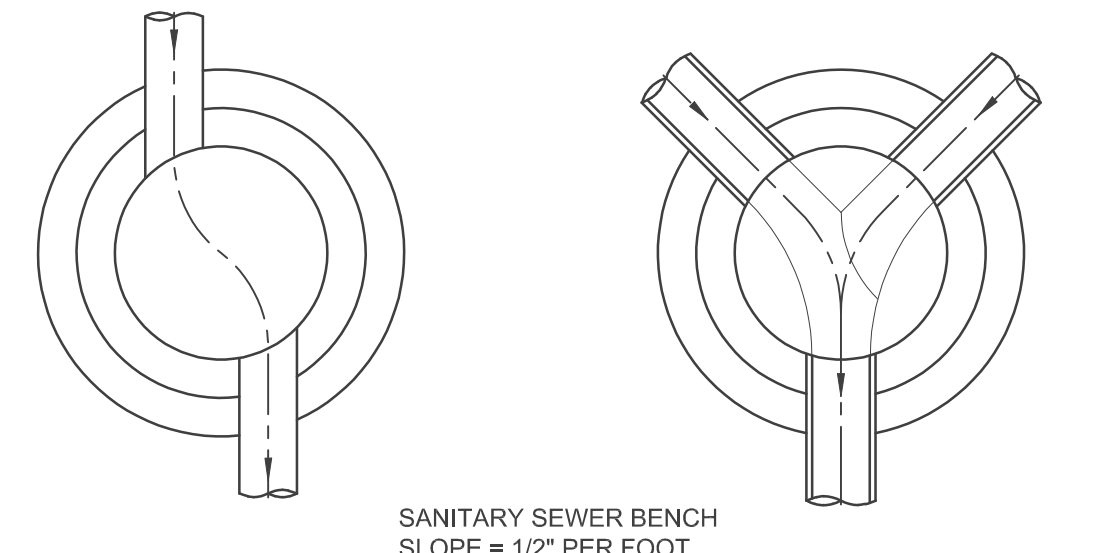
GENERAL FLEXIBLE PIPE BEDDING
 (NOT TO SCALE)



LEGEND:
 O.D. = OUTSIDE DIAMETER
 H = BACKFILL COVER ABOVE TOP OF PIPE
 d = INSIDE DIAMETER
 h = $\frac{O.D.}{8}$; 4" MINIMUM

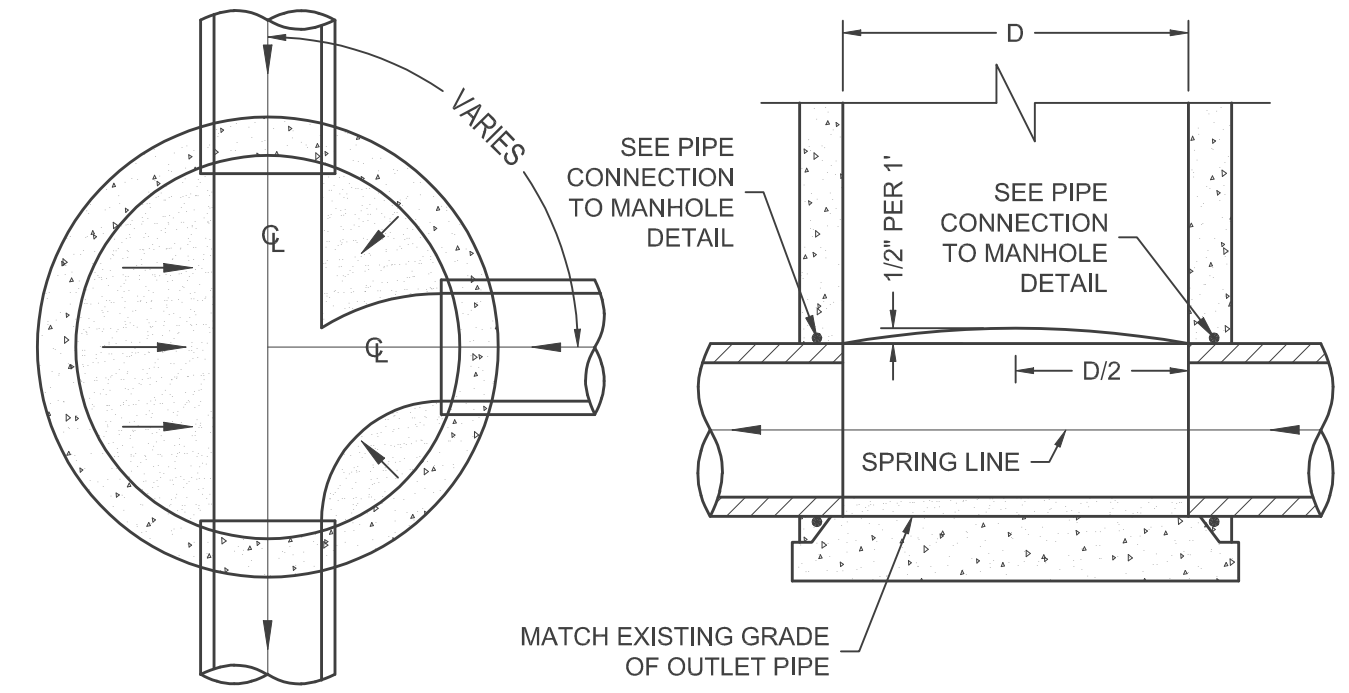
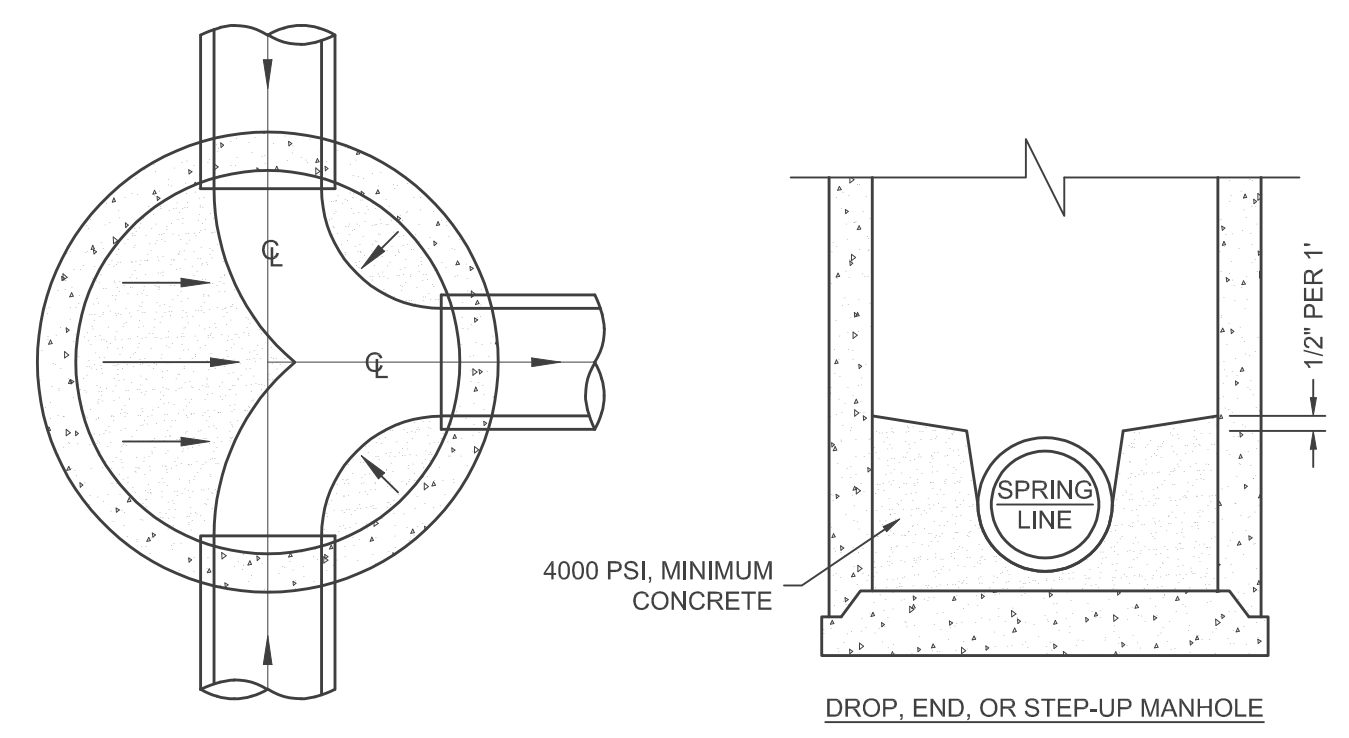
NOTES:
 1. MINIMUM COVER - STORMWATER 3', SANITARY 4', WATER 5'.
 2. FOR ROCK OR OTHER NON-COMPRESSIVE MATERIALS: THE TRENCH SHOULD BE OVER-EXCAVATED A MINIMUM OF 6" AND REFILLED WITH GRANULAR MATERIAL.

GENERAL RIGID PIPE BEDDING
 (NOT TO SCALE)

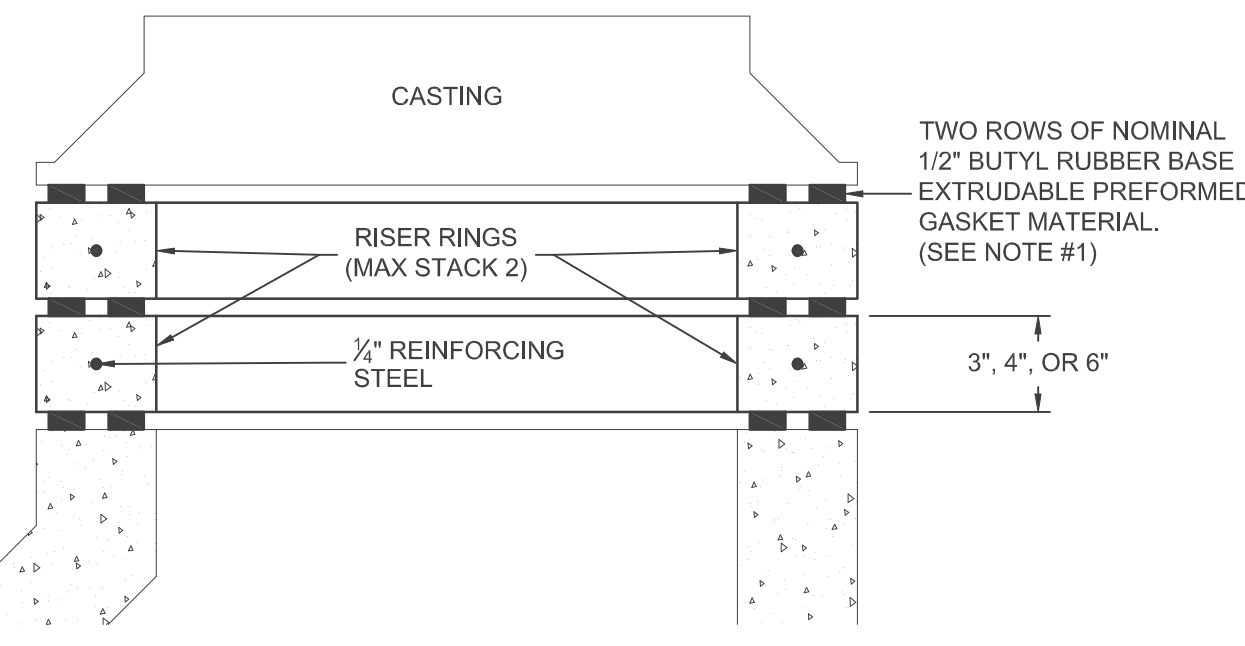
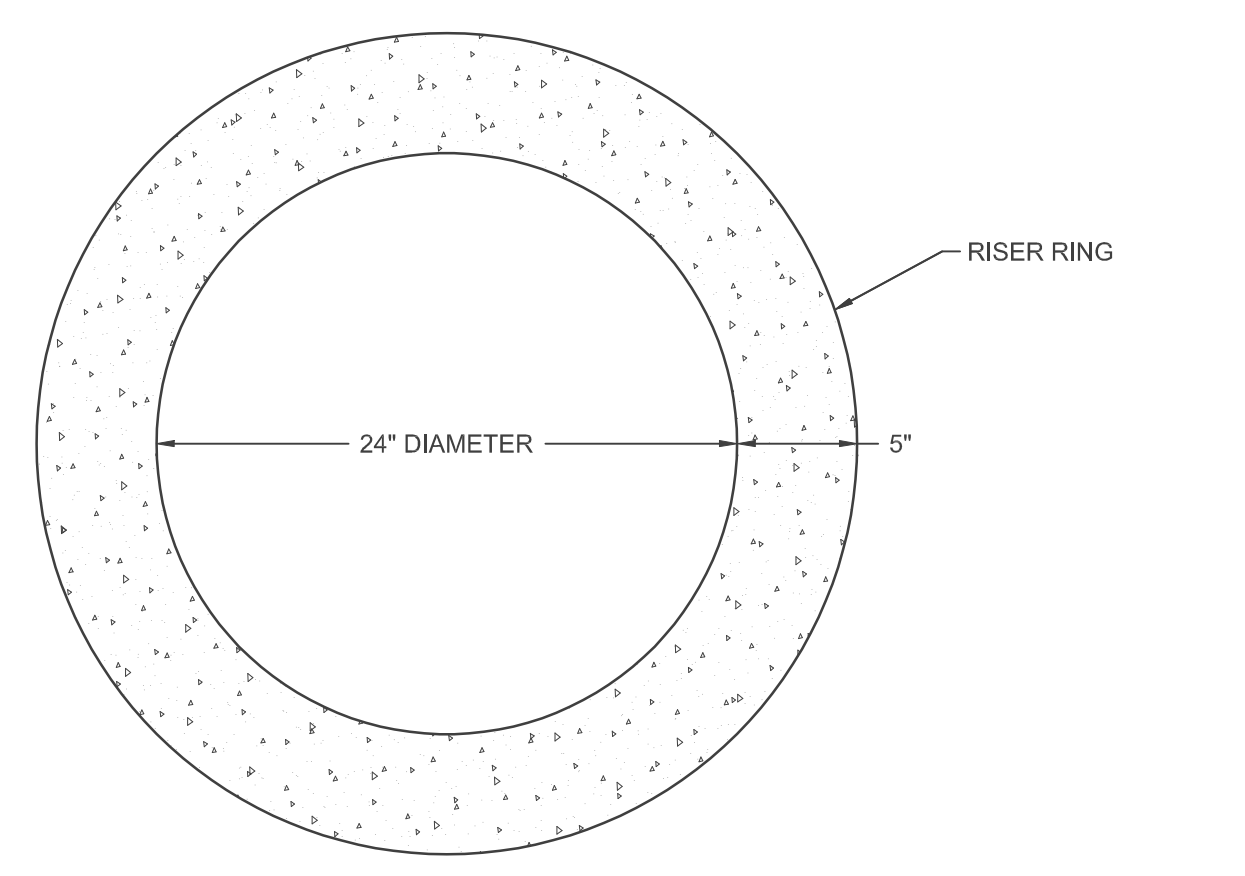


POURED CHANNEL SHAPES #2
 (NOT TO SCALE)

POURED CHANNEL SHAPES #1
 (NOT TO SCALE)

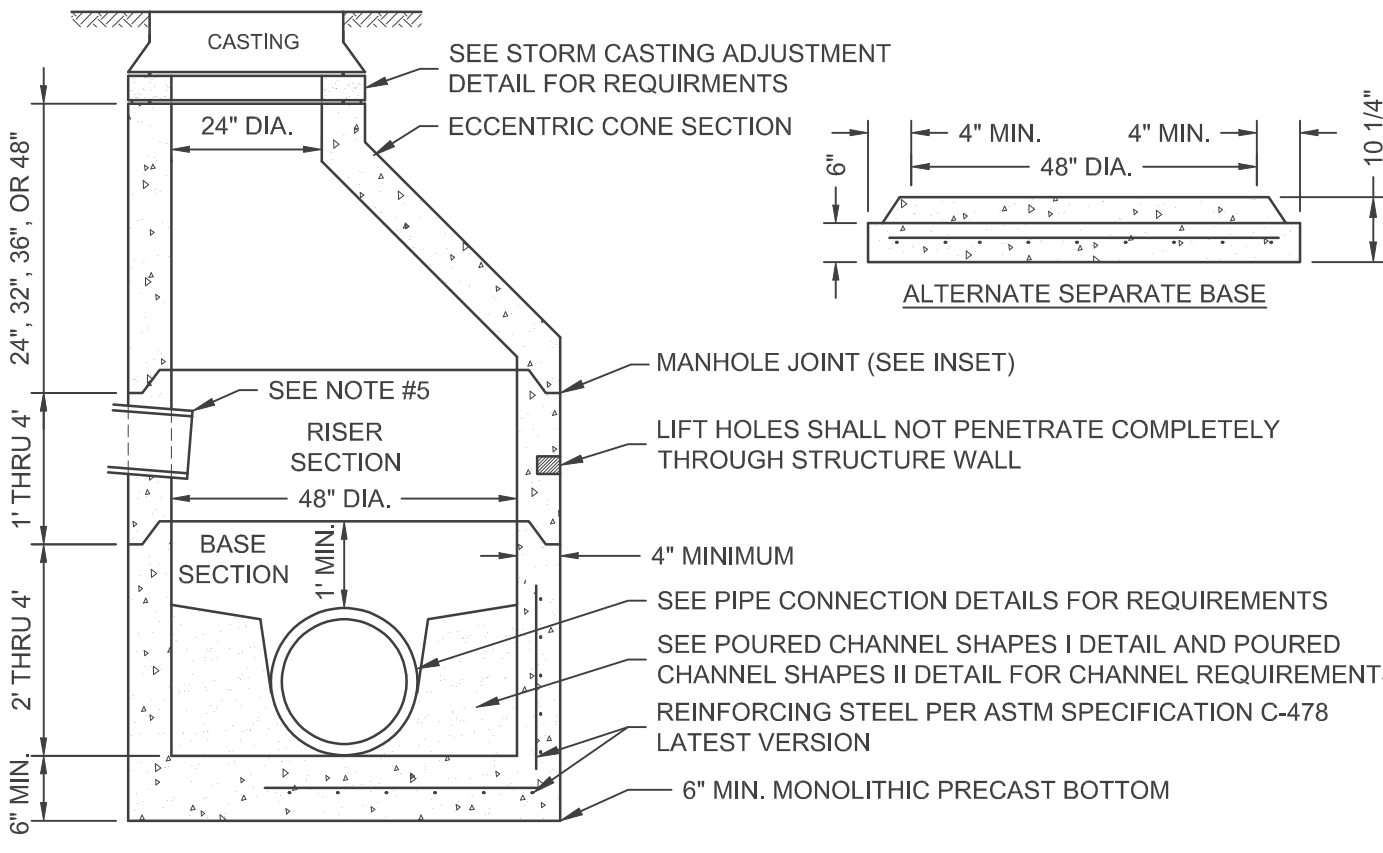
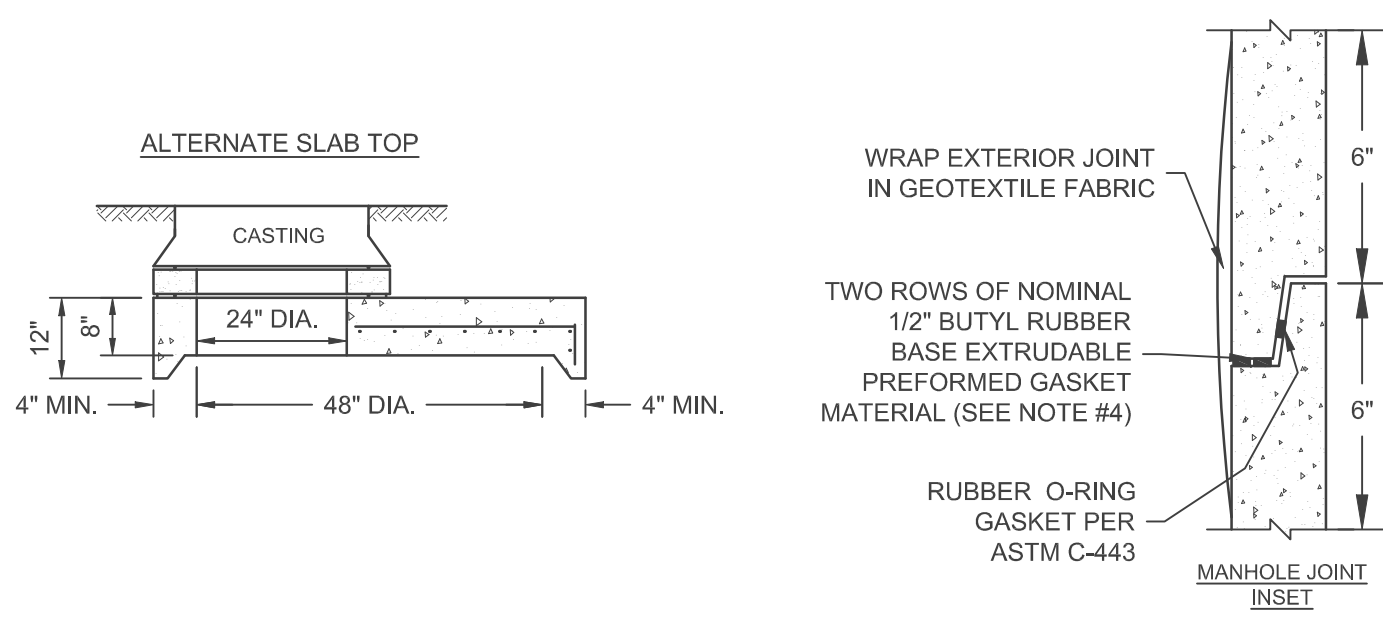


NOTES:
 1. ϵ OF ALL PIPES TO INTERSECT ϵ OF MANHOLE. INVERTS TO BE POURED UNDER DRY PIPE CONDITIONS.
 2. WHEN INCREASING PIPE DIAMETER BY 6" OR LESS, CROWN ELEVATIONS SHALL MATCH AT ϵ OF MANHOLE.
 3. WHEN INCREASING PIPE DIAMETER BY MORE THAN 6", SPRING LINES SHALL MATCH AT ϵ OF MANHOLE.



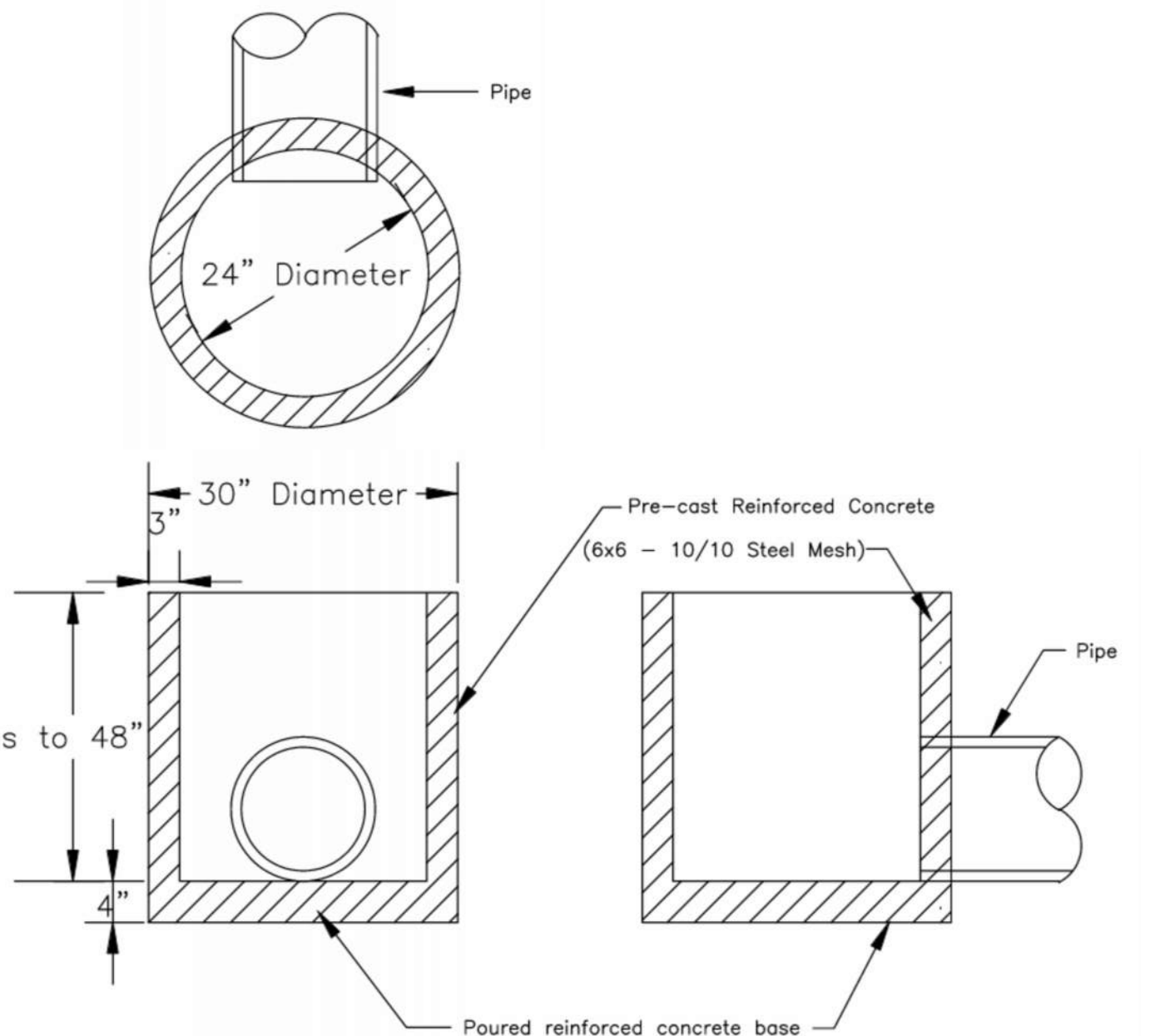
NOTES:
 1. USE RU 106 RUB'NEK LTM AS MANUFACTURED BY HENRY CO., KENT-SEAL NO. 2 AS MANUFACTURED BY HAMILTON-KENT OR EZ-STICK BUTYL-RUBBER-BASED PREFORMED FLEXIBLE SEALANT AS MANUFACTURED BY PRESS-SEAL.
 2. MINIMUM 4,500 PSI CONCRETE SHALL BE USED FOR RISER RINGS. ALTERNATE PRODUCTS MAY BE USED WITH PRIOR APPROVAL FROM THE CITY UTILITIES PROJECT ENGINEER.

STORM CASTING ADJUSTMENT
 (NOT TO SCALE)



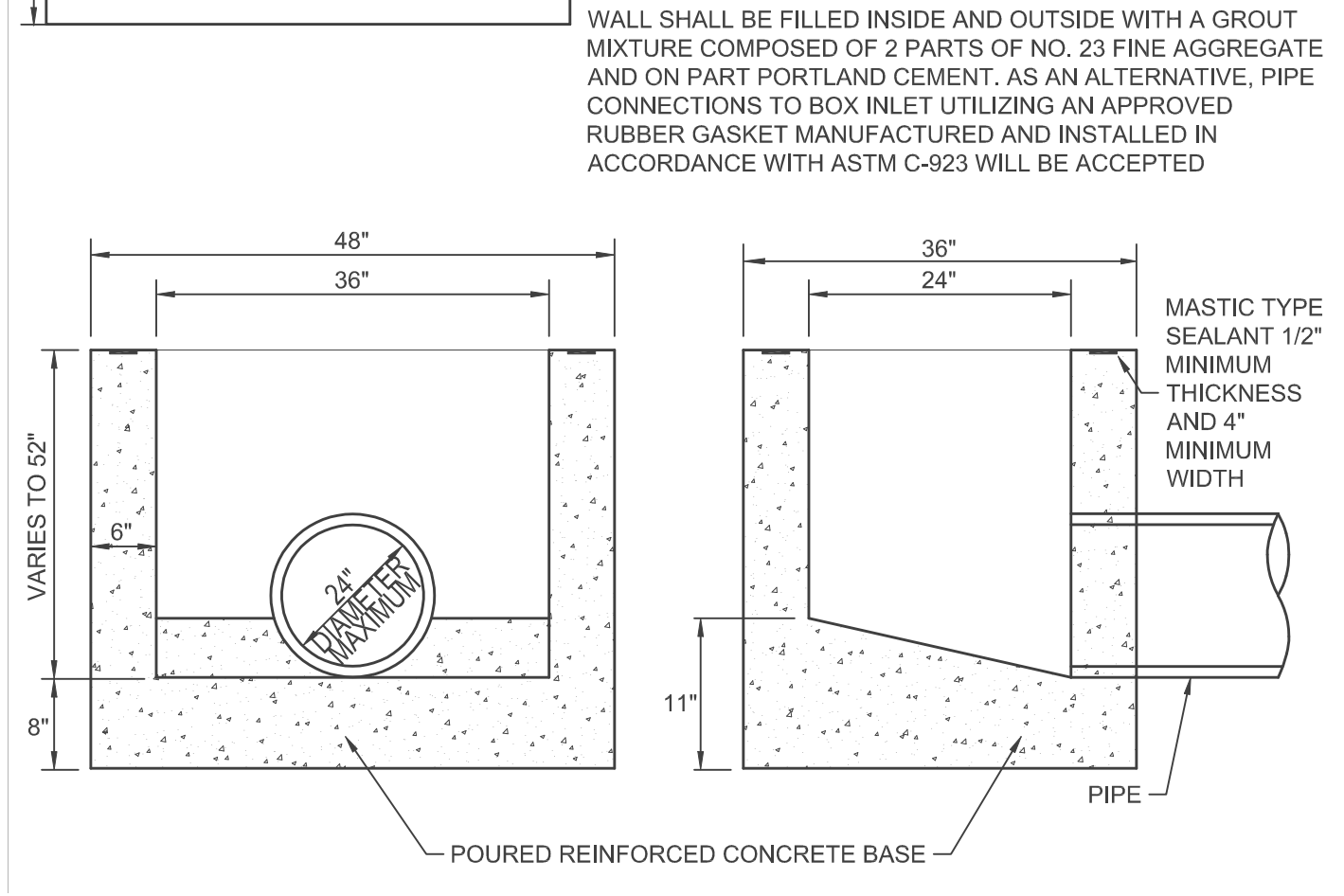
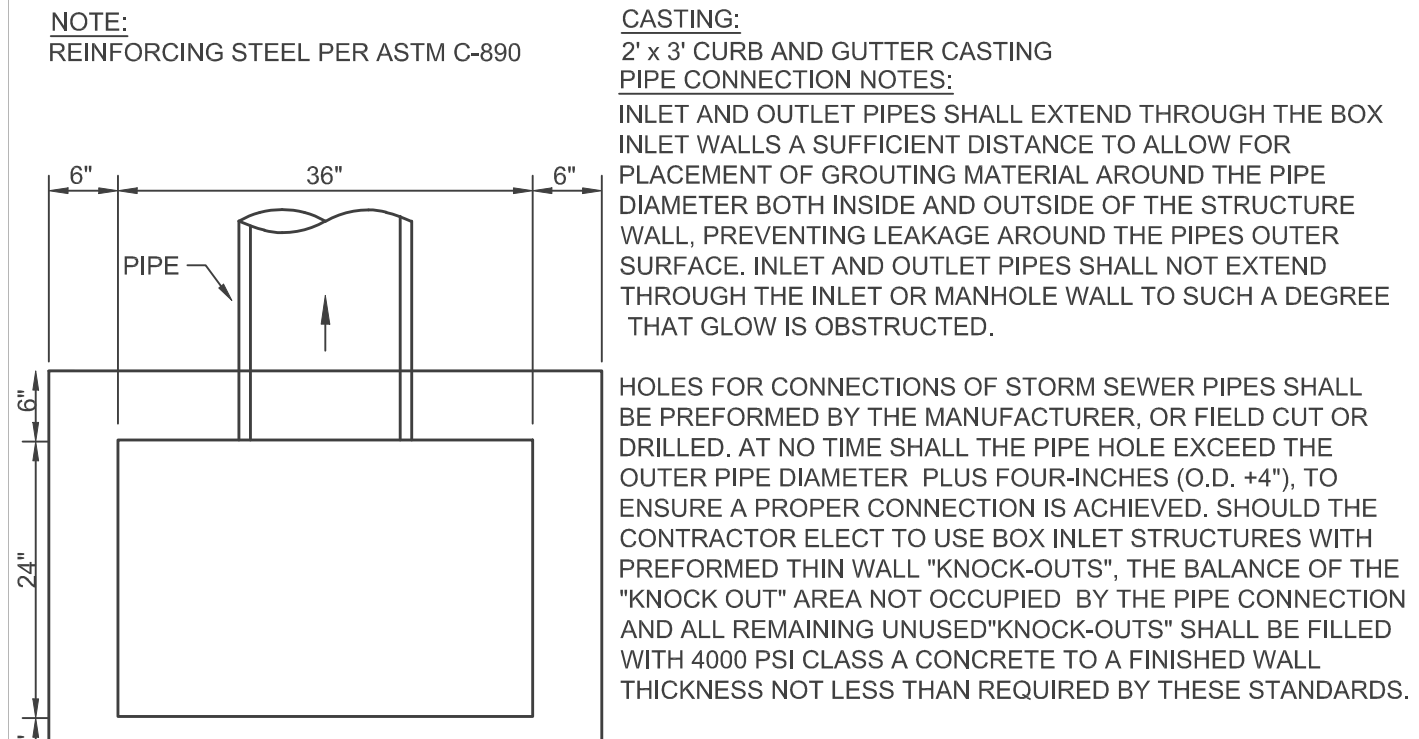
NOTES:
 1. FOR ALTERNATE CAST-IN-PLACE BASE, SEE CAST-IN-PLACE BASE 48" AND LESS DETAIL.
 2. THE BASE SHALL BE PLACED ON COMPACTED CRUSHED STONE, 4" MINIMUM.
 3. THE INSIDE WALL DISTANCE BETWEEN OPENINGS SHALL BE A MINIMUM OF 6".
 4. USE RU 106 RUB'NEK LTM AS MANUFACTURED BY HENRY CO., KENT-SEAL NO. 2 AS MANUFACTURED BY HAMILTON-KENT OR EZ-STICK BUTYL-RUBBER-BASED PREFORMED FLEXIBLE SEALANT AS MANUFACTURED BY PRESS-SEAL.
 5. UNDERDRAIN CONNECTION SHALL BE ABOVE BENCH. SEE PIPE CONNECTION DETAILS FOR REQUIREMENTS.

48" STORM MANHOLE
 (NOT TO SCALE)



Notes:
 1. All concrete to be a minimum of 4500 psi @ 28 days.
 2. Manufactured in accordance with ASTM C-478 and INDOT Spec. 907.04.
 3. Manhole joints to be Tongue and Groove with Butyl Rubber sealant or o-ring per ASTM C-443.
 4. Manhole steps are 1/2" Steel Reinforced with polypropylene plastic coating at 12" to 16" spacing.
 5. Lifting holes require plugging before testing.
 6. Pipe Connections available are PSX Boots, A-Lok or Non-Shrink Grout by Contractor.
 7. Pre-poured inverts are available on request.
 8. All reinforcing steel meets or exceeds ASTM C-478.
 9. Base section comes standard with 6" monolithic base. Separate base and Flat Top is available on request. Base section is to be set per job specifications.

24" DIA. INLET
 (NOT TO SCALE)



2' x 3' INLET
 (NOT TO SCALE)

Construction Plan Bid Set - October 9, 2024