

ADDENDUM NO. 2
To the Contract Document and Project Specifications for the
JEFFERSON MIDDLE SCHOOL SITE IMPROVEMENTS
Fort Wayne Community Schools (FWCS)
Fort Wayne, Indiana
January 2, 2025

To: All holders of the contract documents for the above project.

The items in this addendum are to become a part of the original documents as if included therein. The remainder of the original contract document is to remain in its entirety. This Addendum modifies the Contract Documents and Specifications as follows:

- Part 1 – General Clarifications
- Part 2 – Specifications
- Part 3 – Construction Drawings/Details
- Part 4 – Questions

PART 1 – GENERAL CLARIFICATIONS

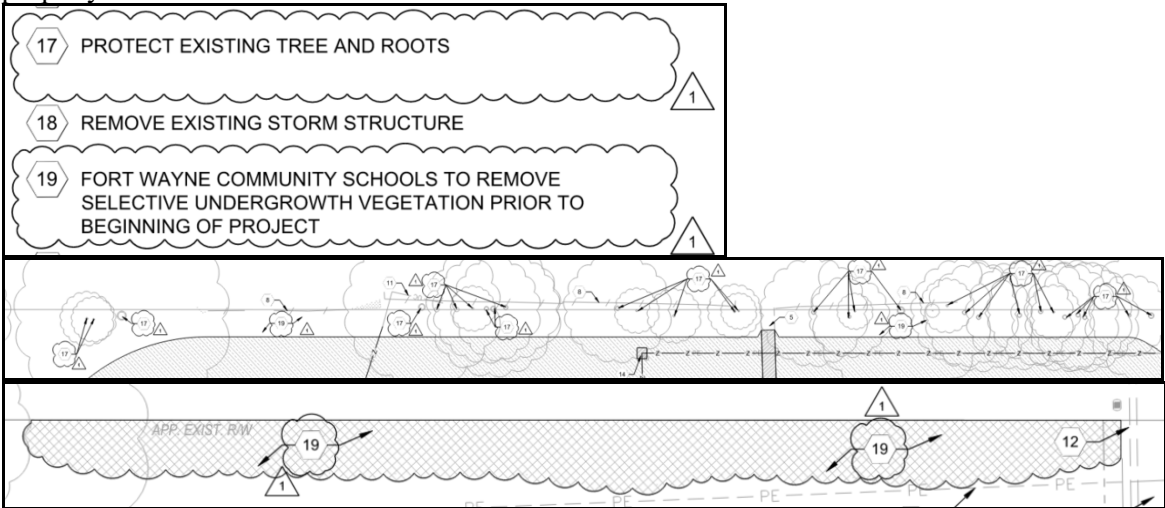
- 1. Not applicable

PART 2 – SPECIFICATIONS

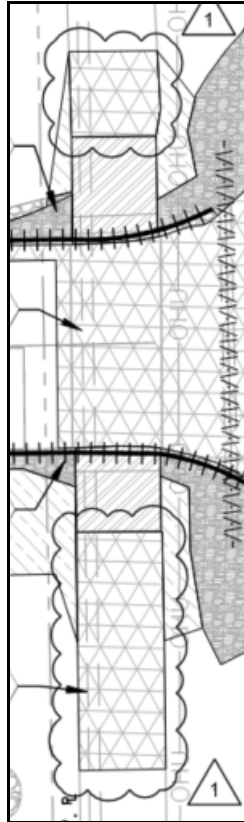
- 1. Not applicable

PART 3 – CONSTRUCTION DRAWING / DETAILS

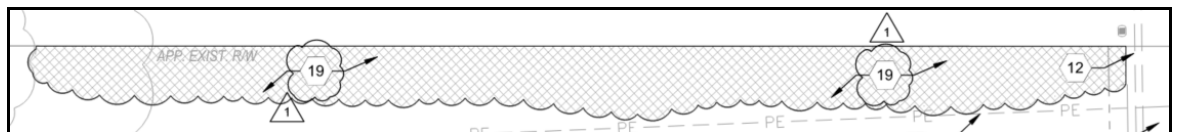
- 1. Plan Sheet C102
 - A. **REVISED:** Keynotes 17 & 19 to maintain existing trees along the northern edge of the property.



B. **REVISED:** Trail demolition along Wheelock Road to be full removal.

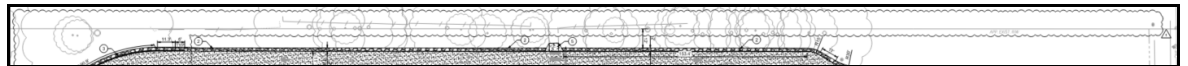
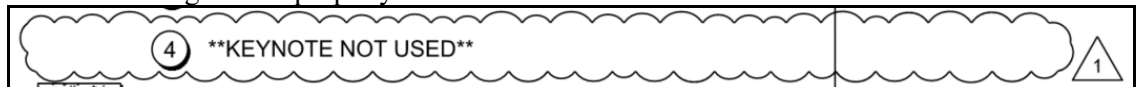


C. **REVISED:** Language for hatch calling for the removal of vegetation by FWCS.

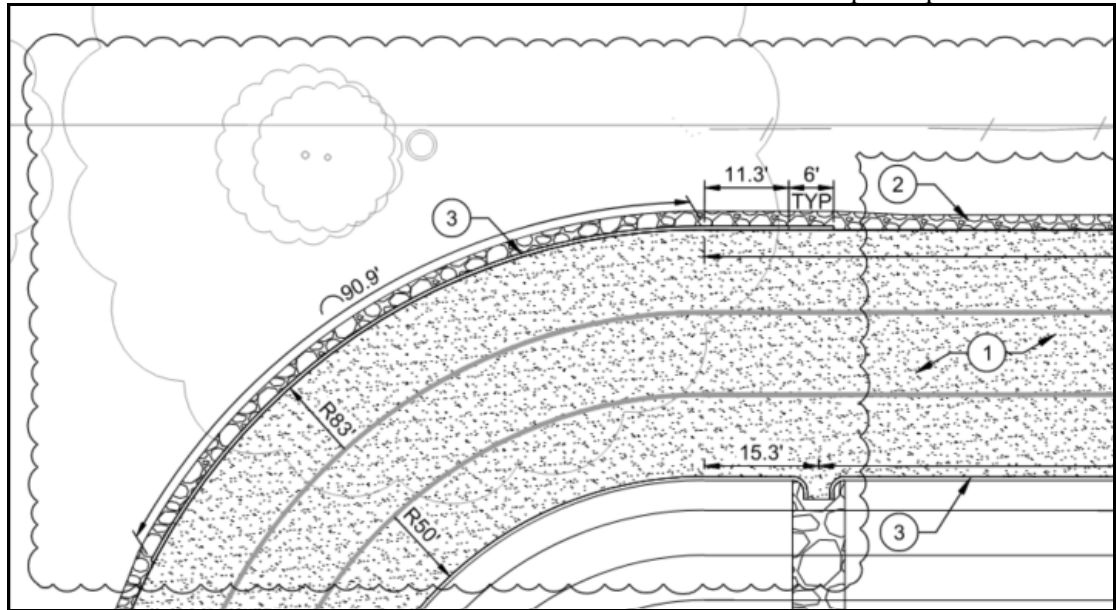


2. Plan Sheet C201

A. **REMOVED:** Keynote 4 in legend and on plan; there will not be a proposed fence along the northern edge of the property.

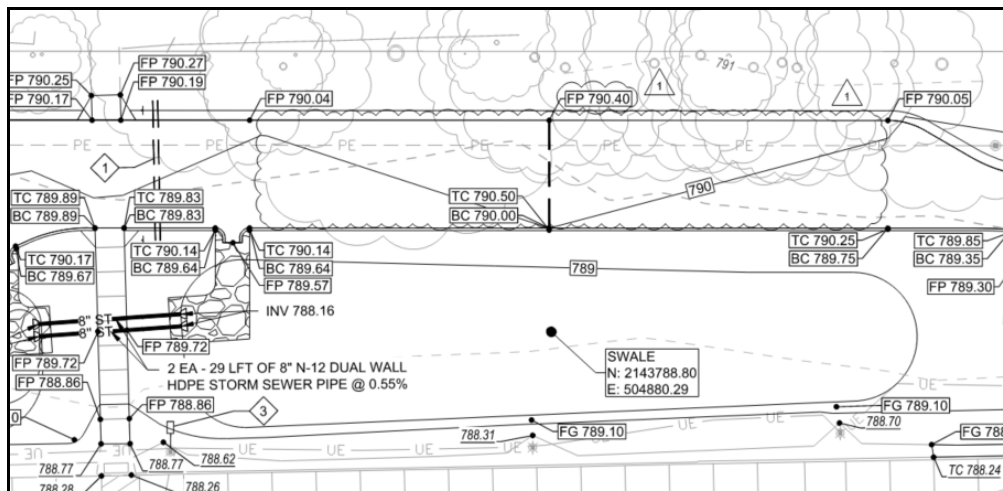
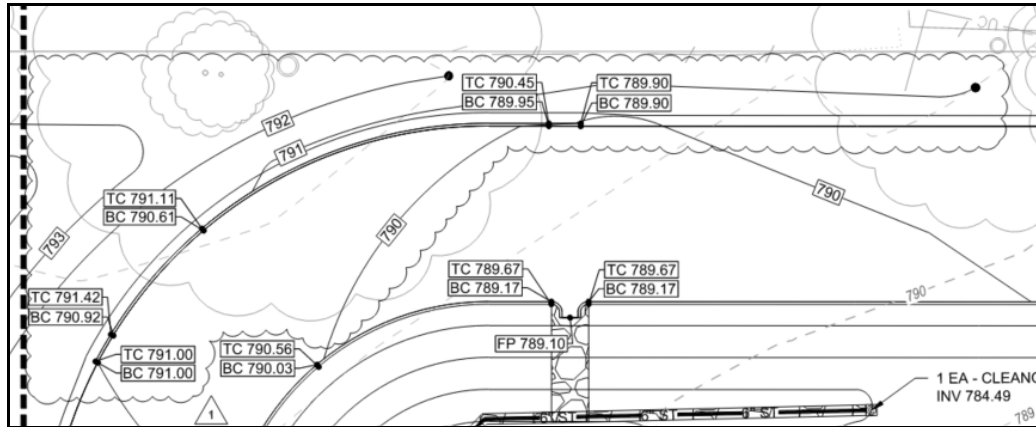


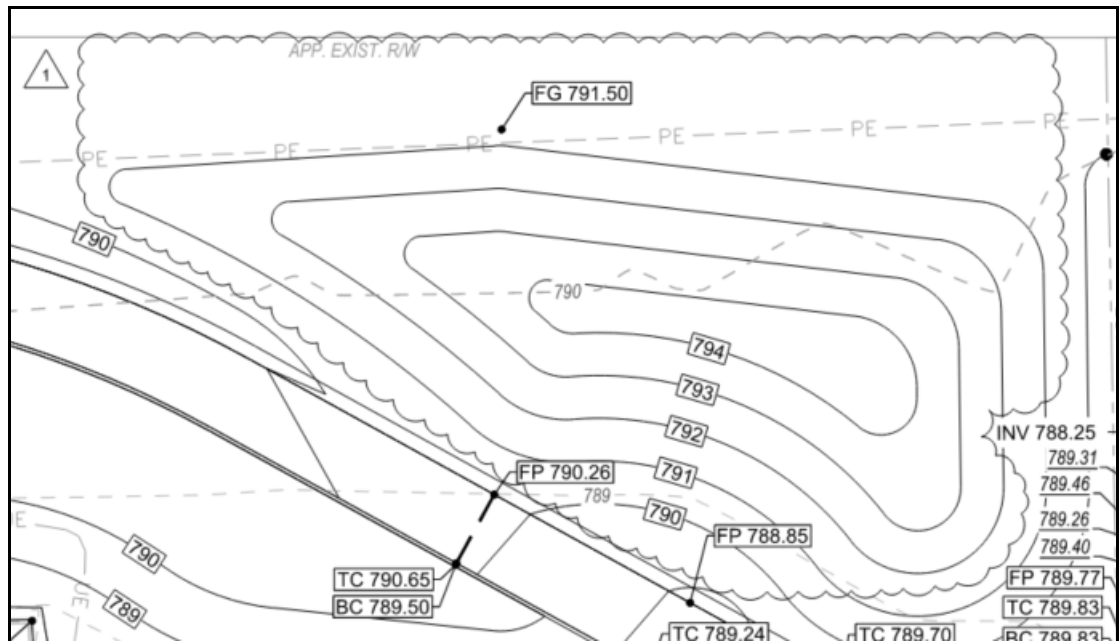
B. **ADDED:** Standard curb and dimensions on the northwest corner of the pick-up lanes.



3. Plan Sheet C301

A. **REVISED:** Grades and contours on the northeast and northwest edges of the pick-up lanes.



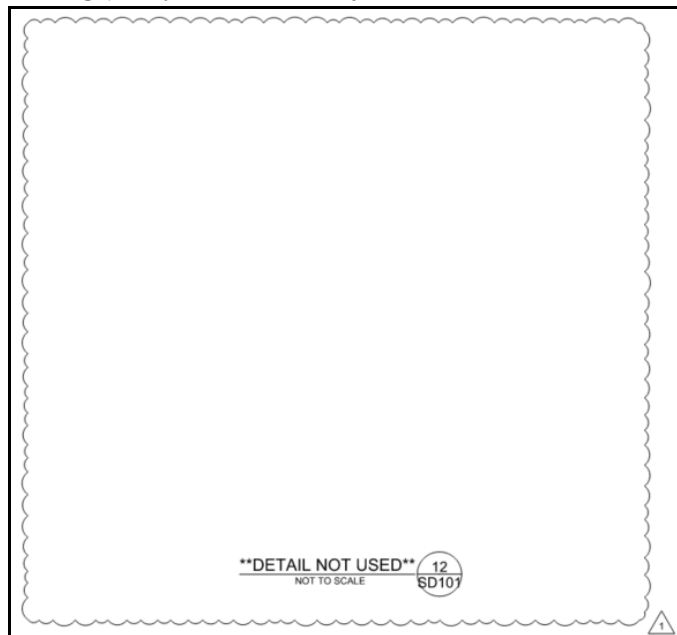


4. Plan Sheet C601 (Replace - See Attached Sheet)

- A. **REVISED:** Landscape at the northern edge of the property; instead of the proposed trees, there will be shrubs with a mulch bed.
- B. **REVISED:** Detail 1/C601; shown as a shrub planting detail instead of a tree planting detail.
- C. **REVISED:** Plant material list to account for shrubs.
- D. **REVISED:** Note 8 in General Landscape Notes to account for shrubs instead of trees.

5. Plan Sheet SD101

- E. **REMOVED:** Detail 12/SD101 as the fence has been removed.



PART 4 – QUESTIONS

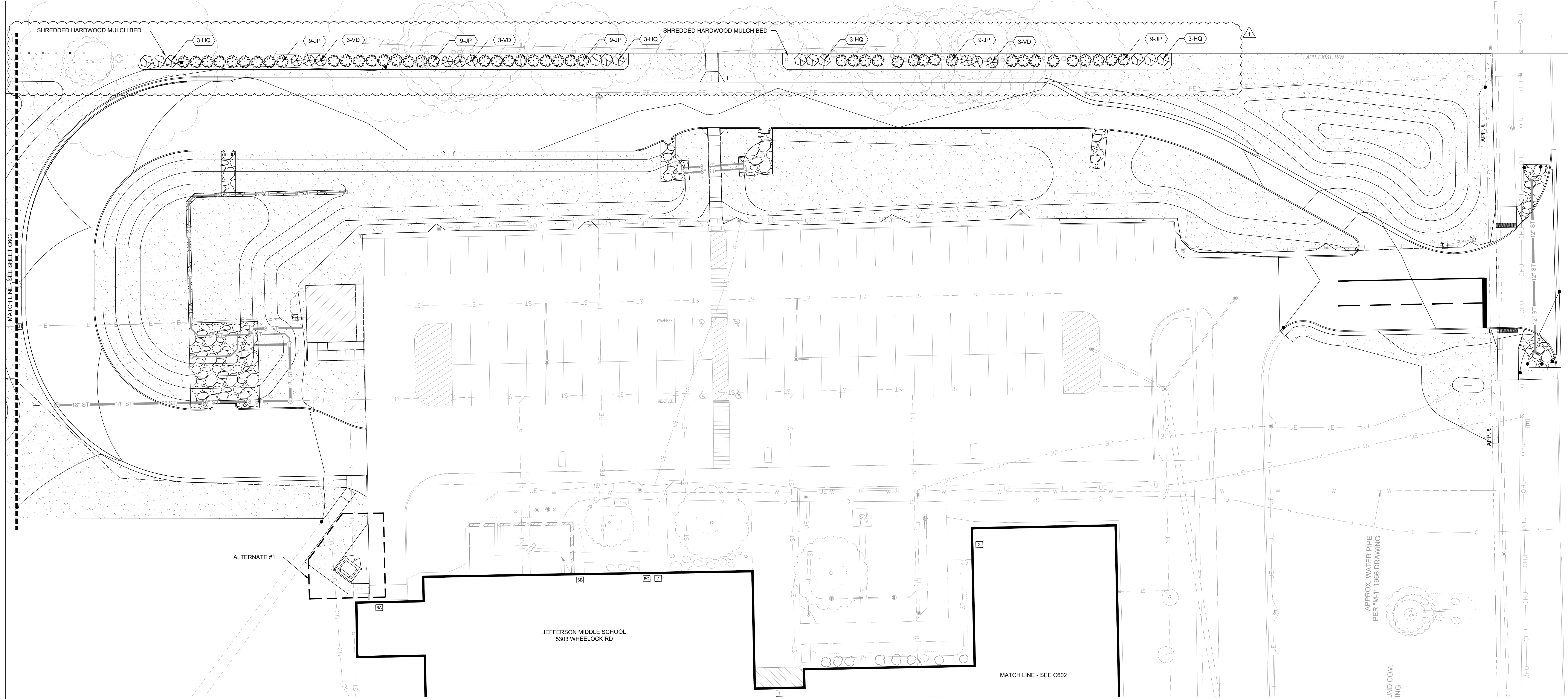
1. Are we supposed to remove the existing aggregate edge in the area on the northeast corner of the parking lot or do you want us to remove it for the new proposed aggregate edge?
 - A. *The slope of the aggregate edge from existing conditions to proposed conditions is being changed – refer to the grading plan. The aggregate edge does not need to be replaced full depth, a new layer of aggregate over top the existing stone edge in this area to meet the proposed grades and stormwater flow pattern is all that is needed.*

2. What conductors are installed in the conduits between the garage and soccer field?
 - A. *The conduit line that is being relocated is anticipated to just be the power feed for the scoreboard from the garage building. The scoreboard at the track is just 120 volt circuit. There are no good records of the sizing, but the conduit appears to be +/-3/4" (see image below). Contractors are welcome to visit the site and/or schedule a visit with FWCS (Travis Searles – 260.438.0122) to see further details if desired.*

3. For Note #2 on C301: What size conduit is it? What wire is in the conduit? Communications? Power? I believe you want (2) in-ground boxes installed at each end, please clarify.
 - A. *The conduit line that is being relocated is anticipated to just be the power feed for the scoreboard from the garage building – no communications lines anticipated. The scoreboard at the track is just 120 volt circuit. There are no good records of the wire sizing, but the conduit appears to be +/-3/4" (see image below). Contractors are welcome to visit the site and/or schedule a visit with FWCS (Travis Searles – 260.438.0122) to see further details if desired. Yes, one in-ground box is to be installed at both ends for a total of two on this conduit run.*



PLAN CH LINE - SEE SHEET C602



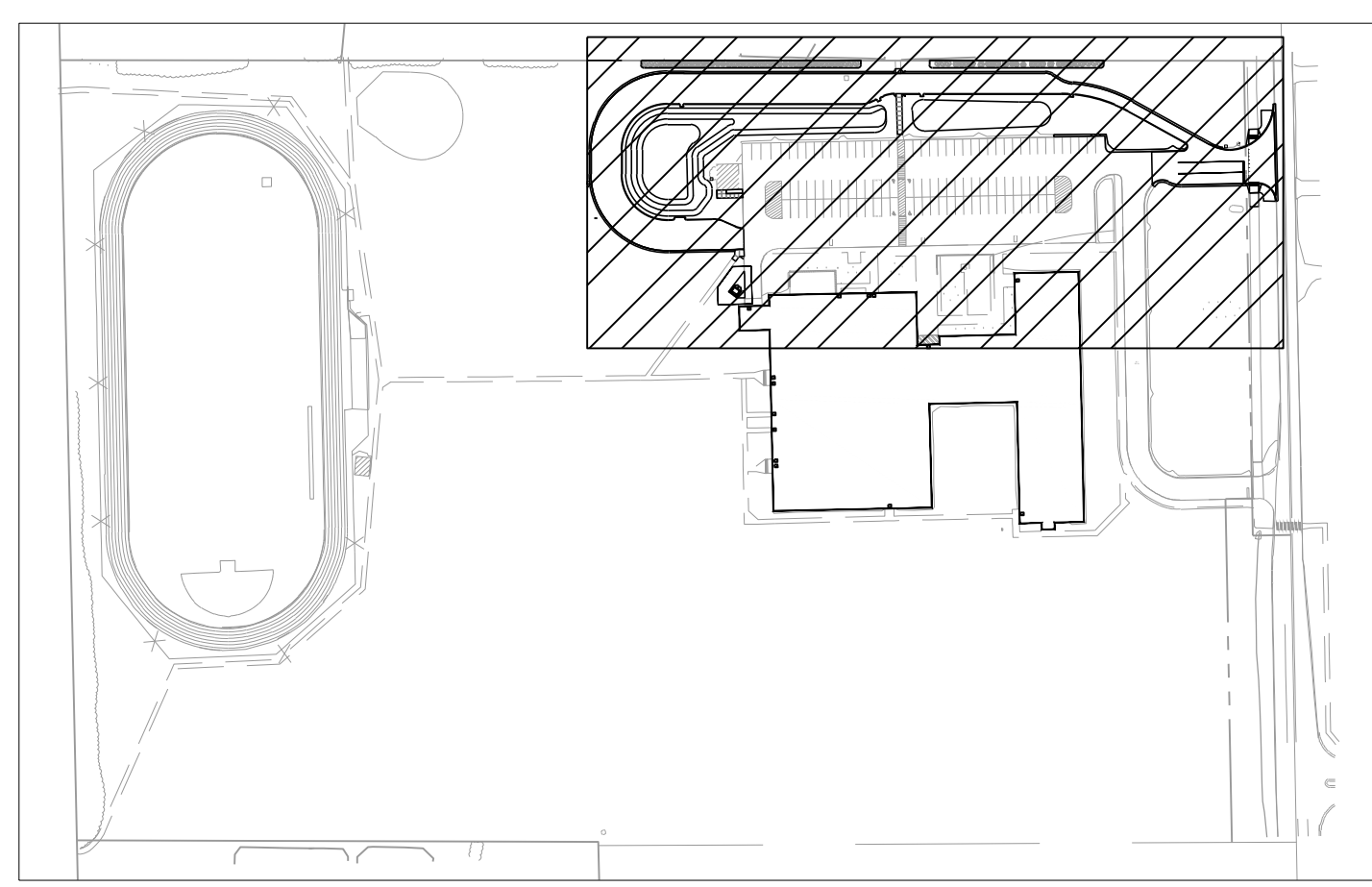
ALTERNATE #1

JEFFERSON MIDDLE SCHOOL
5303 WHEELCOCK RD

MATCH LINE - SEE C602

APPROX WATER PIPE
PER "M-1" 1986 DRAWING

IND COM.
ING



KEYNOTE PLAN - 1:200

GENERAL LANDSCAPE NOTES

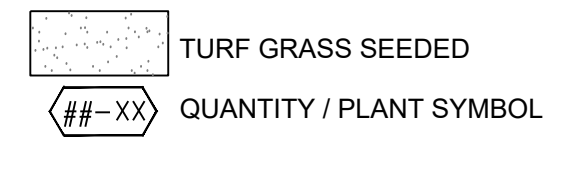
- 1. CONTRACTOR SHALL BE RESPONSIBLE TO VERIFY LOCATION OF ALL PRIVATE AND PUBLIC UTILITY LINES WHICH AFFECT THIS SITE. CONTRACTOR SHALL ALSO NOTIFY ALL UTILITY COMPANIES PRIOR TO THE COMMENCEMENT OF ANY SITE WORK.
2. CONTRACTOR SHALL REVIEW PLANTING SPECIFICATIONS AND PLANTING DETAILS BEFORE BEGINNING WORK.
3. CONTRACTOR SHALL VISIT THE PROJECT SITE AND BECOME FAMILIAR WITH CONDITIONS UNDER WHICH WORK SHALL BE IMPLEMENTED PRIOR TO BIDDING.
4. CONTRACTOR SHALL NOTIFY CONTRACT OFFICER OF ANY DISCREPANCIES IN THE EXISTING CONDITIONS OR WITHIN THE PLANS PRIOR TO BEGINNING WORK.
5. PLANTING BEDS SHALL HAVE FINISHED GRADES SMOOTHED TO ELIMINATE PONDING OR STANDING WATER. CONTRACTOR SHALL MAINTAIN A MINIMUM 2% DRAINAGE AWAY FROM BUILDINGS AND PAVING INTO DRAINAGE STRUCTURE OR TO STREET. CONTRACTOR SHALL NOTIFY OWNER IMMEDIATELY OF ANY CONFLICTS IN MAINTAINING DRAINAGE. IRRIGATION SYSTEM SHALL BE DESIGNED TO ELIMINATE OVERSPRAY ONTO BUILDINGS, STRUCTURES AND MONUMENT SIGNS.
6. CONTRACT OFFICER SHALL APPROVE ALL FINISH GRADING PRIOR TO PLACEMENT OF ANY PLANT MATERIAL.
7. CONTRACTOR SHALL IMMEDIATELY, UPON THE AWARD OF THE CONTRACT, LOCATE, ORDER AND PURCHASE (OR HAVE HELD) ALL PLANT MATERIAL REQUIRED BY THESE PLANS AND SPECIFICATIONS.
8. CONTRACTOR SHALL NOTIFY CONTRACT OFFICER FOR OBSERVATION AT THE FOLLOWING TIMES:
(SHRUB) LOCATIONS - PRIOR TO PLANTING
(PONT) APPROVAL AND SPOTTING - PRIOR TO PLANTING
(PRE) MAINTENANCE APPROVAL
(POST) MAINTENANCE / FINAL APPROVAL
9. CONTRACTOR SHALL BE HELD RESPONSIBLE FOR ANY REPAIRS MADE NECESSARY THROUGH THE ACTIONS/NEGLIGENCE OF THEIR CREW.
10. SHRUB QUANTITIES ARE SHOWN ON PLANS. UNDERPLANT ALL TREES WITH THE ADJACENT SHRUB AND/OR GROUNDCOVER AS INDICATED BY THE PLANS. PLANTS SHALL BE INSTALLED WITH TRIANGULAR SPACING. PLANT GROUNDCOVERS TO WITHIN 36" OF TREE TRUNK OR 12" OF SHRUB STEMS.
11. PLANT SYMBOLS TAKE PRECEDENCE OVER PLANT QUANTITIES SPECIFIED. WHERE SHRUB SYMBOLS ARE MASSES, CONTRACTOR SHALL MAINTAIN A CONSISTENT ON CENTER, TRIANGULAR SPACING AS SPECIFIED IN LEGEND. CONTRACTOR SHALL VERIFY PLANT TOTALS FOR BID PURPOSES.
12. ALL ROCKS AND DEBRIS ONE INCH (1") AND LARGER SHALL BE REMOVED FROM PLANTING AREAS TO A DEPTH OF 1'0" AND THEN FROM THE SITE TO A LEGAL SITE OF DISPOSAL. WHERE GRASS IS TO BE PLANTED, ALL ROCKS AND DEBRIS ONE HALF INCH (1/2") AND LARGER SHALL BE REMOVED.
13. PLANTING SOIL SHALL BE A THOROUGHLY GROUND AND BLENDED MIXTURE OF EQUAL PARTS OF THE FOLLOWING MATERIALS: ONE THIRD (1/3) TOPSOIL, ONE THIRD (1/3) PEAT MOSS AND ONE THIRD (1/3) SAND. ALL PLANTED AREAS SHALL RECEIVE A MINIMUM OF 6" OF TOPSOIL.
14. PRIOR TO PLANT INSTALLATION, CONTRACTOR SHALL IRRIGATE ALL PLANTING AREAS NORMALLY FOR TWO WEEKS TO GERMINATE WEEDS. CONTRACTOR SHALL THEN APPLY CONTACT HERBICIDE TO WEEDS ONLY PER MANUFACTURER, MONSANTO ROUNDUP OR APPROVED EQUAL.

- 15. PLANT MATERIAL MAY BE REJECTED AT ANY TIME BY CONTRACT OFFICER DUE TO CONDITION, FORM OR DAMAGE BEFORE OR AFTER PLANTING.
16. ALL PLANT MATERIAL TO BE PLANTED WITH PLANTING TABLETS ACCORDING TO THE MANUFACTURER'S INSTRUCTION AND AS FOLLOWS:
-BALLED & BURLAPPED PLANT MATERIAL USE TWO (2) 21 GRAM TABLETS PER EACH 1/2" CALIPER
-7 GALLON CONTAINER PLANT MATERIAL, USE THREE (3) 21 GRAM TABLETS PER PLANT
-5 GALLON CONTAINER PLANT MATERIAL USE TWO (2) 21 GRAM TABLETS PER PLANT
-3.2, AND 1 GALLON CONTAINER PLANT MATERIAL, USE ONE (1) 21 GRAM TABLETS PER PLANT
-PLANTING TABLETS SHALL BE AGRIFORM 20-10-5, PLANTING TABLETS PLUS MINORS STOCK NO. 90026 (21 GRAMS) OR APPROVED EQUAL.
17. ALL PLANT MATERIAL SHALL RECEIVE GRANULAR PLANT FOOD TO THE SURFACE OF THE PLANT BEDS INCLUDING GROUND COVER BEDS WHICH DO NOT CONTAIN MANURE OR PLANTING TABLETS. THE PLANT FOOD SHALL BE SPREAD OVER THE ROOT AREA STARTING 6" FROM THE TRUNK AND EXTENDING TO THE DRIP LINE OF EACH PLANT OR TO THE OUTER EDGE OF THE PLANT BED, WHICHEVER LARGER, AT THE RATE OF 2 POUNDS PER 100 SQ FT.
18. CONTRACTOR SHALL BE RESPONSIBLE FOR THE INSTALLATION OF ALL LANDSCAPE PLANT MATERIAL TO THE LATEST HORTICULTURAL PRACTICE STANDARDS.
19. ALL PLANTING BEDS SHALL HAVE A 3 INCH (3") DEPTH OF SHREDDED HARDWOOD MULCH APPLIED AFTER INSTALLATION OF PLANT MATERIAL. MULCH SHALL BE PEST & DISEASE FREE PLANT MATERIAL AND BE FREE OF TWIGS, LEAVES, STONES, CLAY OR OTHER FOREIGN MATERIAL. CONTRACTOR SHALL SUBMIT SAMPLE OF MULCH TO CONTRACT OFFICER FOR APPROVAL PRIOR TO INSTALLATION.
20. PLANTING BED EDGES SHALL BE A 3-4" DEEP NATURAL SPADE OR MACHINE TRENCHED EDGE IN THE SHAPE AS SHOWN ON THE LANDSCAPE PLANTING PLANS.
21. CONTRACTOR SHALL BE RESPONSIBLE FOR A MINIMUM ONE (1) YEAR GUARANTEE TIME FOR THE REPLACEMENT OF ANY PLANT MATERIAL WHICH DIES AFTER THE DATE OF INSTALLATION ON SITE. THE REPLACEMENT PLANT MATERIAL SHALL BE EQUAL IN SIZE AND QUALITY TO THE PLANT MATERIAL SHOWN ON THE LANDSCAPE PLANS. ALL COSTS FOR THE REMOVAL OF DEAD PLANTS AND THEIR REPLACEMENTS SHALL BE BORNE BY THE CONTRACTOR.
22. SUBSTITUTIONS OF PLANT MATERIAL SHALL BE PERMITTED UPON WRITTEN SUBMISSION THAT SPECIFIED PLANT(S) ARE UNAVAILABLE OR UNACCEPTABLE DUE TO HARDINESS. SUBSTITUTE PLANT MATERIAL SHALL BE EQUAL IN SIZE, CHARACTERISTICS AND CONDITION OF MATERIAL BEING REPLACED. OWNER SHALL BE NOTIFIED AND APPROVE ALL SUBSTITUTIONS PRIOR TO THEIR INSTALLATION.
23. CONTRACTOR SHALL INSPECT BACKFILL AND PLACEMENT OF TOPSOIL TO DETERMINE WHETHER OR NOT A "HARDPAN" SITUATION EXISTS OR COULD EXIST DUE TO PREVIOUS SOIL CONDITIONS, PLACEMENT OF AND COMPACTION OF FILL DURING CONSTRUCTION, OR ANY OTHER CONTRIBUTING FACTOR PRIOR TO INSTALLATION OF PLANT MATERIALS. IF SUCH A SITUATION IS FOUND OR ANTICIPATED, IT SHOULD BE BROUGHT TO THE ATTENTION OF JPR AND/OR OWNER IMMEDIATELY AND PRIOR TO THE INSTALLATION OF PLANT MATERIAL. FOR A REMEDY, CONTRACTOR RESPONSIBLE FOR PLANT REPLACEMENT IF PLANT MATERIAL IS PLANTED IN A "HARDPAN" SITUATION.
24. DIMENSIONS FOR HEIGHTS, SPREAD AND CALIPER OF TREES SPECIFIED ON THE PLANT LIST ARE GENERAL GUIDES FOR THE MINIMUM DESIRED SIZE OF EACH PLANT. EACH PLANT SHALL HAVE A UNIFORM AND CONSISTENT SHAPE AS IT PERTAINS TO THE LATEST EDITION OF AMERICAN STANDARD FOR NURSERY STOCK. PLANT MATERIAL WHICH FAILS TO CONFORM TO THE SPECIFICATIONS IS SUBJECT TO REJECTION BY OWNER/JPR.

PLANT MATERIAL LIST

Table with columns: ID, BOTANICAL NAME, COMMON NAME, SIZE, QTY, ROOT. Lists shrubs like Hydrangea, Juniper, and Viburnum.

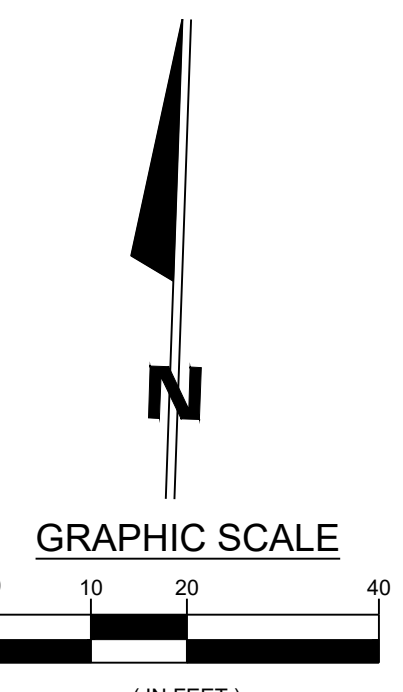
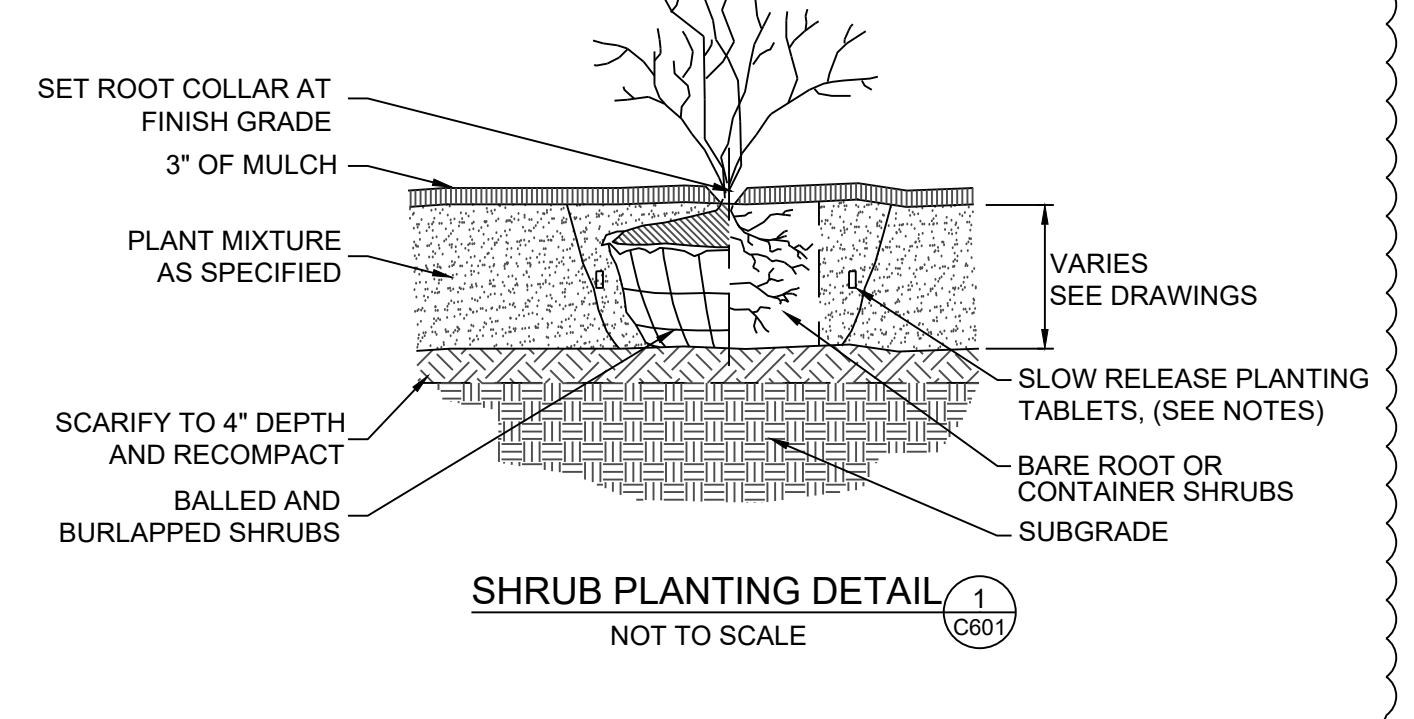
LANDSCAPE LEGEND



SEEDING NOTES

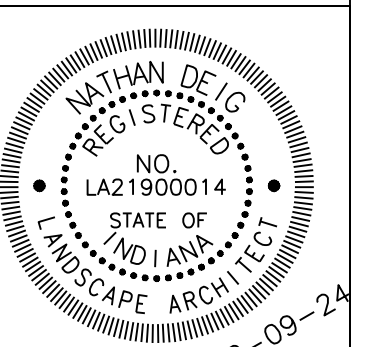
- 1. ALL DISTURBED AREAS TO BE DRILL SEEDED WITH THE FOLLOWING GRASS SEED MIXTURE:
TYPE % BY WEIGHT % BY PURITY % BY GERMINATION
KENTUCKY BLUE GRASS 36 85 80
RED FESCUE 30 98 85
MANHATTAN PERENNIAL RYE 17 98 90
NORLEA PERENNIAL RYE 17 98 90
2. TURF SEED INSTALLATION: SOW SEED WITH DRILL SEEDING MACHINE. EVENLY DISTRIBUTE SEED BY SOWING EQUAL QUANTITIES IN TWO DIRECTIONS AT RIGHT ANGLES TO EACH OTHER. DO NOT USE WET SEED OR SEED THAT IS MOLDY OR OTHERWISE DAMAGED. DO NOT SEED AGAINST EXISTING TREES. LIMIT EXTENT OF SEED TO OUTSIDE EDGE OF PLANTING SAUCER.
-SOW SEED AT A TOTAL RATE OF 4 LB/1000 SQ FT.
-RAKE SEED LIGHTLY INTO TOP 1/8 INCH OF SOIL. ROLL LIGHTLY, AND WATER WITH FINE SPRAY.
-PROTECT SEEDED AREAS WITH SLOPES EXCEEDING 1:3 WITH EROSION-CONTROL BLANKETS INSTALLED AND STAPLED ACCORDING TO MANUFACTURER'S WRITTEN INSTRUCTIONS.
-PROTECT SEEDED AREAS WITH SLOPES NOT EXCEEDING 1:3 BY HYDROMULCH. SPREAD UNIFORMLY AT A MINIMUM RATE OF 1/2 TONS/ACRE TO FORM A CONTINUOUS BLANKET OVER SEEDED AREAS.
3. SATISFACTORY SEEDED TURF: AT END OF MAINTENANCE PERIOD (90 DAYS), A HEALTHY, UNIFORM, CLOSE STAND OF GRASS HAS BEEN ESTABLISHED, FREE OF WEEDS AND SURFACE IRREGULARITIES, WITH COVERAGE EXCEEDING 90 PERCENT OVER ANY 10 SQ FT AND BARE SPOTS NOT EXCEEDING 3 INCHES BY 3 INCHES (3" X 3").

- NOTES:
1. DO NOT PRUNE EVERGREENS, EXCEPT TO REMOVE DEAD AND BROKEN BRANCHES.
2. THIN BRANCHES AND FOLIAGE (NOT ALL BRANCH TIPS) BY 1/3, RETAINING NORMAL PLANT SHAPE (EXCEPT EVERGREEN).
3. REMOVE BURLAP FROM TOP 1/3 OF BALL, OR WITH CONTAINER PLANTS, REMOVE POTS AND SPLIT BALLS AS SPECIFIED.



Revision table with columns: REV, DESCRIPTION, DATE. Includes entry for APPENDUM #2 - REMOVAL OF TREES AND ADDITION OF SHRUBS.

JONES PETRIE RAFINSKI logo and contact information for Fort Wayne, IN.



JEFFERSON MIDDLE SCHOOL PICKUP LANE
FORT WAYNE COMMUNITY SCHOOLS
1200 S CLINTON STREET
LANDSCAPE PLAN

DESIGNED BY: JPR TEAM
REVIEWED BY: NGD
DATE: DEC 09, 2024
JOB NUMBER: 2024-01328
HORIZ. SCALE: 1" = 30'
VERTICAL SCALE: N/A
C601

File: J:\Projects\2024\Projects\2024-01-238 Jefferson MS\07_Design\ENG\Plans\24-01328_C601_LANDSCAPE PLAN.dwg
Date: 2025-01-02 12:23:14M