



Primary Engineering, Inc.
 2828 Lake Ave.
 Fort Wayne, Indiana 46805
 260-424-0444 ph
 www.primary-eng.com



Addendum: **3**
 Date: **3/14/2025**
 Project: **FWCS HPB Natatorium HVAC Improvements**

Comm #: **24634**

The following items shall be incorporated into the specifications and drawings and are considered to be integral to the bid documents for the project. Acknowledgement of receipt of this addendum is required on the bid form.

Item #1: Specifications Section 230130.52 “Existing HVAC Air Distribution System Cleaning”

- A. Delete requirements for Indoor Environmental Professional (IEP).
- B. Delete Part 3.1 D.
- C. Delete Part 3.3 D.
- D. Delete Part 3.3 E.

Item #2: Specifications Section 260529 “Hangers and Supports for Electrical Systems”

- A. Part 2.A.3: Replace “Galvanized Steel” with “Stainless Steel”.
- B. Part 2.B – “Aluminum Slotted Support Systems:” - Delete in its entirety.
- C. Part 2.C – Conduit and Cable Support Devices – Replace “Steel and malleable-Iron hangers” with “Stainless Steel hangers”.
- D. Part 2.F.6 – Revise to be “Toggle Bolts: All stainless steel springhead type.”

Item #3: Specifications Section 260533.13 “Conduits for Electrical Systems”

- A. Part 3.1.C.2 – Delete “or IMC.”
- B. Part 3.1.C.3 – Delete “or IMC.”
- C. Part 3.1.C.1 – Replace “ERMC” with ERMC or PVC-80”
- D. Part 3.1.D.2 – Replace “ERMC or IMC” with “ERMC or PVC-80”
- E. Part 3.1.D.5 – Replace “ERMC” with “PVC-80”. (Natatorium is Wet Location)

Item #4: Drawing Sheet M001 “Mechanical Information Sheet.”

- A. Add Refrigerant Leak Detection and Control Diagram. See attached drawing revision to M001 dated 3/14/2025.

Item #5: Drawing Sheet E201 “Electrical Plans.”

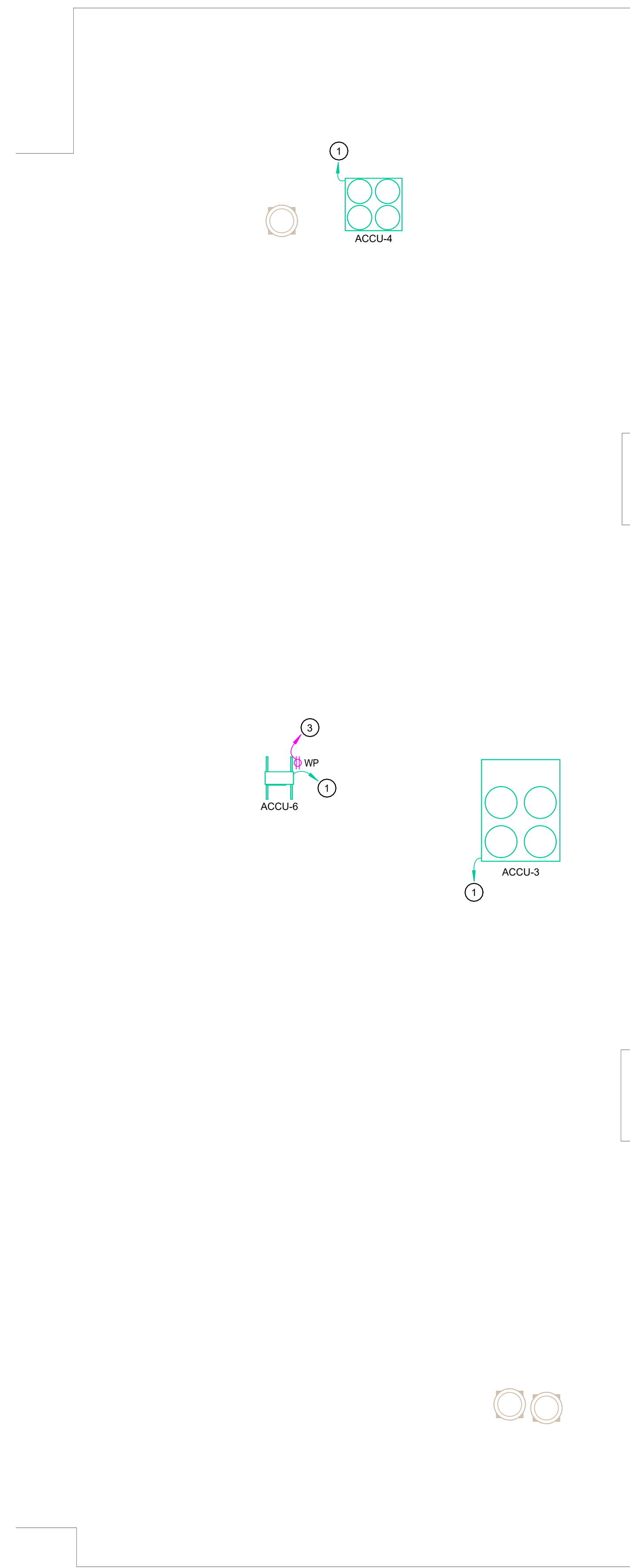
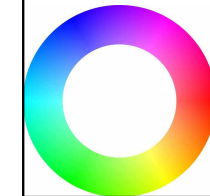
- A. Add power to EF-1 & EF-2 and (2) RMP (refrigerant monitor panel). See attached drawing revision to E201 dated 3/14/2025.

- B. Clarification" any conduit in Natatorium shall be PVC-80, cleaned, prepped, primed and painted two coats.

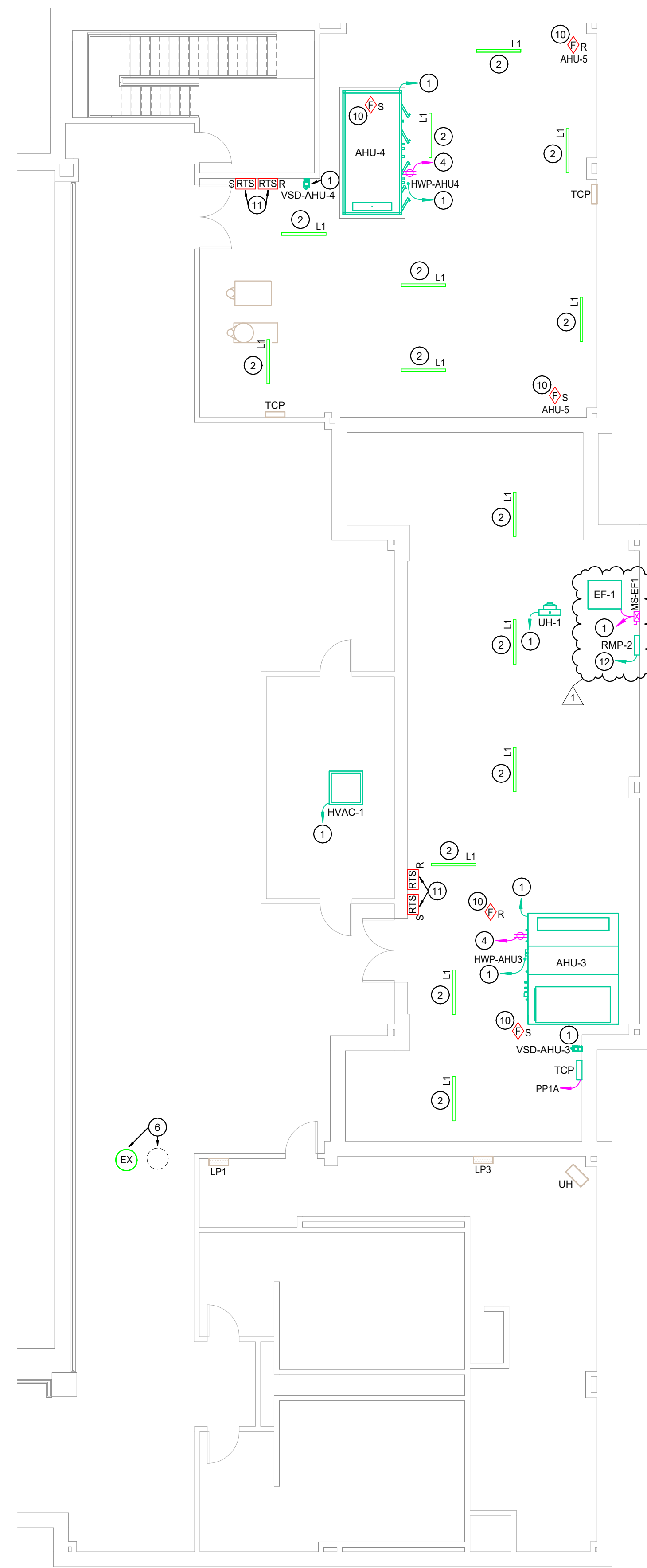
Item #6: Drawing Sheet E401 "Electrical Details and Schedules."

- A. Add EF-1 & 2 to Equipment Schedule. Add breaker in Panel HV1 for EF-1. See attached drawing revision to E401 dated 3/14/2025.

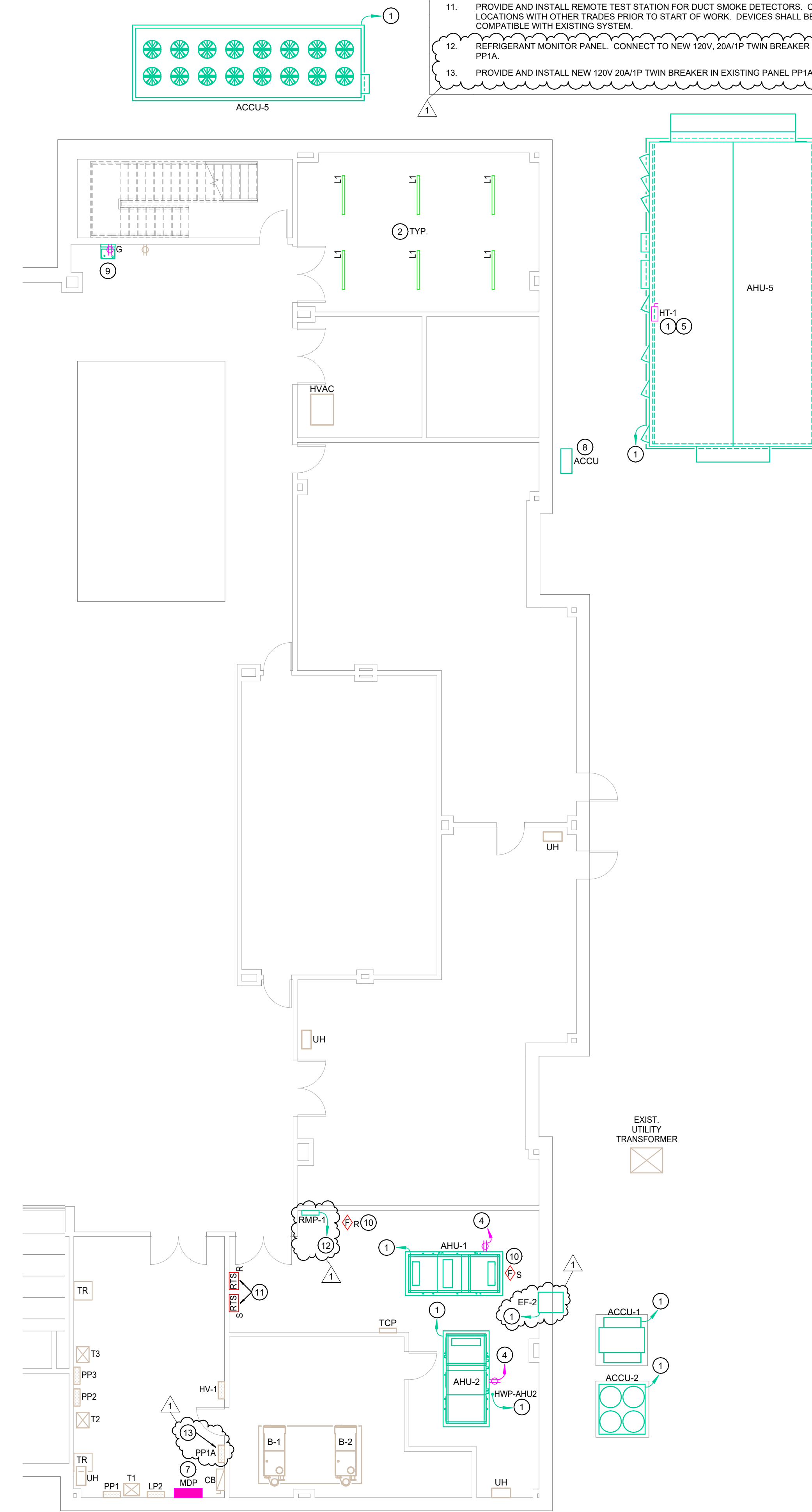
IF THE WHEN PRINTED BELOW IS NOT SHOWN IN COLOR, THIS SET OF PRINTS IS NOT REPRESENTING ALL LINE TYPES CORRECTLY. CONTACT ENGINEERING FOR DIRECTIONS ON HOW TO OBTAIN A FULL COLOR SET OF PRINTS



PARTIAL ROOF ELECTRICAL PLAN
1/8" = 1'-0"



PARTIAL SECOND FLOOR ELECTRICAL PLAN
1/8" = 1'-0"



PARTIAL FIRST FLOOR ELECTRICAL PLAN
1/8" = 1'-0"

- PLAN NOTES**
- REFER TO ELECTRICAL EQUIPMENT SCHEDULES ON E401 FOR ADDITIONAL REQUIREMENTS. COORDINATE LOCATION, ROUGH-IN REQUIREMENTS AND ELECTRICAL REQUIREMENTS WITH OTHER TRADES AND SHOP DRAWINGS PRIOR TO ROUGH-IN.
 - PROVIDE AND INSTALL NEW LIGHT FIXTURES, CONNECT TO EXISTING LIGHTING CIRCUIT AND CONTROLS SERVING ROOM. COORDINATE WITH MECHANICAL CONTRACTOR TO MISS ANY PIPING AND DUCTWORK IN THIS AREA, PRIOR TO INSTALLATION.
 - CONNECT NEW RECEPTACLE TO NEAREST RECEPTACLE CIRCUIT.
 - PROVIDE AND INSTALL 120V, 20A RECEPTACLE ON MECHANICAL UNIT FOR OWNER PROVIDED EQUIPMENT. CONNECT TO EXISTING RECEPTACLE CIRCUIT IN AREA.
 - PROVIDE AND INSTALL 277V, 20A CIRCUIT AND LOCAL DISCONNECT SWITCH IN AHU-5 FOR HT-1 HEAT TRACE EQUIPMENT. WIRE THROUGH TCC PROVIDED RELAY. COORDINATE LOCATION WITH OTHER TRADES. CONTROL BY TCC.
 - RELOCATE PENDANT LIGHT FIXTURE TO ALLOW FOR DUCT INSTALLATION. COORDINATE FINAL LOCATION WITH OTHER TRADES.
 - PROVIDE AND INSTALL NEW MAIN DISTRIBUTION PANEL MDP IN PLACE OF EXISTING. RECONNECT ALL EXISTING BRANCH CIRCUITS. COORDINATE WITH OWNER AND UTILITY COMPANY TO MINIMIZE OUTAGE.
 - RECONNECT RELOCATED ACCU TO EXISTING POWER AND CONTROLS PREVIOUSLY SERVING UNIT. EXTEND AS REQUIRED. COORDINATE WITH ALL TRADES.
 - PROVIDE AND INSTALL NEW GFCI RECEPTACLE FOR NEW ELECTRICAL WATER COOLER. REFER TO ELECTRICAL WATER COOLER MANUFACTURER'S REQUIREMENTS FOR EXACT LOCATION. CONNECT TO EXISTING CIRCUIT PREVIOUSLY SERVING DEMOED RECEPTACLE. COORDINATE WITH ALL TRADES.
 - PROVIDE AND INSTALL DUCT SMOKE DETECTORS. PROVIDE ALL HARDWARE, SOFTWARE, MATERIAL AND LABOR TO ADD SERVICES TO EXISTING FIRE ALARM SYSTEM. COORDINATE DEVICE LOCATIONS WITH OTHER TRADES PRIOR TO START OF WORK. DEVICES SHALL BE FULLY COMPATIBLE WITH EXISTING SYSTEM.
 - PROVIDE AND INSTALL REMOTE TEST STATION FOR DUCT SMOKE DETECTORS. COORDINATE LOCATIONS WITH OTHER TRADES PRIOR TO START OF WORK. DEVICES SHALL BE FULLY COMPATIBLE WITH EXISTING SYSTEM.
 - REFRIGERANT MONITOR PANEL. CONNECT TO NEW 120V, 20A/1P TWIN BREAKER IN EXISTING PANEL PPIA.
 - PROVIDE AND INSTALL NEW 120V 20A/1P TWIN BREAKER IN EXISTING PANEL PPIA.

FORT WAYNE COMMUNITY SCHOOLS
HELEN P. BROWN NATATORIUM
HVAC IMPROVEMENTS
3301 S Calhoun St, Fort Wayne, IN 46807

CERTIFICATION:

No.	Date	Description
1	3/14/2025	ADDENDUM #3

DATE: 02.24.2025
COMM: 24634

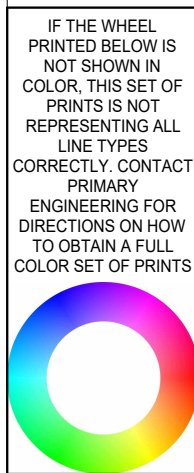
TITLE:
ELECTRICAL PLANS

SHEET:
E201

PRIMARY ENGINEERING INC
Indianapolis
9785 Crossport Blvd, Suite 103
Indianapolis, Indiana 46256
www.primaryeng.com
info@primary-eng.com

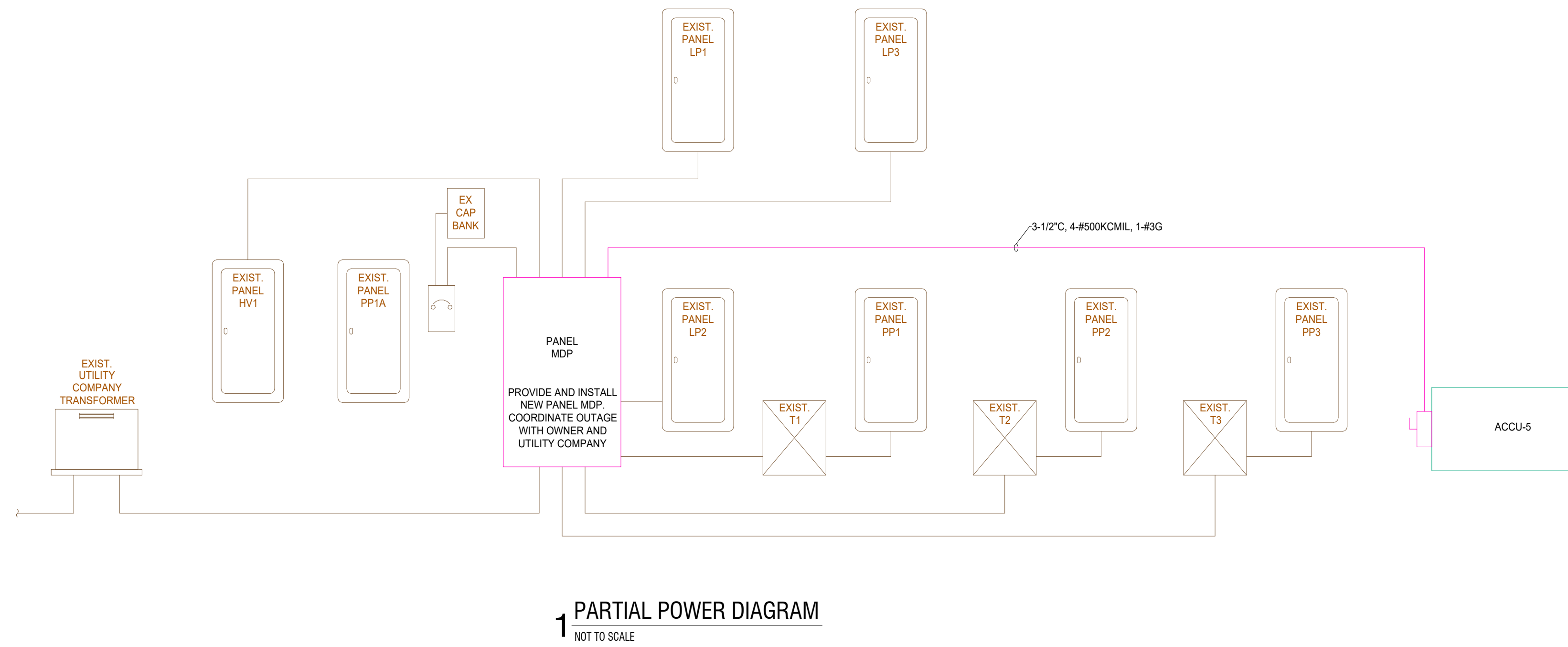
Fort Wayne
2828 Lake Ave.
Fort Wayne, Indiana 46805
www.primaryeng.com
info@primary-eng.com

All concepts, drawings, plans, and details are shown on this document as a guide only. The contractor shall verify all conditions and requirements for any other purpose without further expressed written consent. The contractor shall be permitted to make copies for information and reference purposes.
© 2025 © Primary Engineering, Inc.



LIGHT FIXTURE SCHEDULE									
TAG	MANUFACTURER'S CATALOG NUMBER	MAX. WATTS	MOUNT	MIN. LUMEN OUTPUT (FOOT CANDLE)	CCT	CRI	DESCRIPTION	REMARKS	
L1	METALUX #SMLED-LD8-98SL-LM-LUMV-L889-CD1 LITHONIA #21LD-L8-SMR-500LM-FST-4VOLT-40K-80CRI-WH COLUMBIA #MPS4-40HL-CW-EU	46	SUSPENDED	5,708	5500	80	120-277V, 4" LINEAR STRIP FIXTURE WITH FROSTED LENS AND COLD ROLLED STEEL HOUSING. ELECTRONIC 0-10V DIMMING DRIVER WITH RANGE FROM 100% TO 10% UL LISTED		
REMARKS:									

PANEL: LPS3 EXIST										
MOUNTING TYPE: SURFACE		MLO: 600 AMPERE		VOLTAGE: 277/480						
PANEL REMARKS: CUTLER HAMMER POW-R-LINE PRL1		K.A.I.C.I.: 18		PHASE: 3						
COPPER BUS, 100% RATED NEUTRAL BUS		FED FROM: UTILITY		WIRE: 4+G						
REMARKS	CKT NO.	BRK SIZE	LOAD DESCRIPTION	PHASE A (VA)	PHASE B (VA)	PHASE C (VA)	LOAD DESCRIPTION	BRK SIZE	CKT NO.	REMARKS
	1	20A/1P		0	0	0		20A/1P	2	
	3	20A/1P		0	0	0		20A/1P	4	
	5	20A/1P		0	0	0		20A/1P	6	
	7	20A/1P		0	0	0		20A/1P	8	
	9	20A/1P		0	0	0		20A/1P	10	
	11	20A/1P		0	0	0		20A/1P	12	
	13		SPACE	0	0	0	AHU-4	15A/3P	14	
	15	200A/3P	AHU-1 NEW AHU-5	0	0	0	AHU-2 (MOVES?)	200A/3P	16	
	17	200A/3P	AHU-3 (PUMP P1 ??)	0	0	0	PRESSURE BOOSTER SYSTEM	15A/3P	18	
	19	15A/3P		0	0	0	PUMPS P4 & P5 (POOL ED)	15A/3P	20	
	21	40A/3P	ACCU-1 & ACCU-2	0	0	0	ACCU-3	30A/3P	22	
	23			0	0	0			24	
REMARKS										



EQUIPMENT SCHEDULE

EQUIPMENT DESIGNATION	EQUIPMENT LOCATION	EQUIPMENT LOAD	VOLTAGE/PHASE	CIRCUIT INFORMATION		DISCONNECT				VARIABLE FREQUENCY/SPEED DRIVE (VFD/VSD)		SOLID STATE MOTOR STARTER				REMARKS					
				CONDUIT AND CONDUCTOR SIZE	BRANCH CIRCUIT DESIGNATION	PROVIDED BY	BASED ON (NON-FUSED)	NEUA ENCLASURE	DISCONNECT SWITCH SIZE	FUSE RATING	CONTROL PANEL	PROVIDED BY	INSTALLED BY	PROVIDED BY	NEUA SIZE		CONTROL	TYPE	DISCONNECT SWITCH SIZE	FUSE RATING	NEUA ENCLASURE
AHU-1	OFFICE	6.2 FLA, 4.5KW	480V/3PH	3/4"C, 4-#12, 1-#12 GROUND	LP2-19(21,23)	EC	NF	1	30/3	X											
AHU-2	W MAKEUP AIR	6.2 FLA, 4.5KW	480V/3PH	3/4"C, 4-#12, 1-#12 GROUND	LP2-20(22,24)	EC	NF	1	30/3	X											
AHU-3	SPECTATOR	(2X 10HP @...)	480V/3PH	1 1/4"C, 4-#4, 1-#6 GROUND	LP3-24(6)	INT															
AHU-4	W MAKEUP AIR	8.7 FLA	480V/3PH	3/4"C, 4-#12, 1-#12 GROUND	LP3-20(22,24)	INT															
AHU-5	NATORIUM	136FLA / 169MCA	480V/3PH	2"C, 4-#3, 1-#6 GROUND	LP3 SUB 1	INT															
ACCU-1	AHU-1	28 MCA	480V/3PH	3/4"C, 4-#8, 1-#10 GROUND	HV1-20(22,24)	EC	NF	3R	60/3	X											
ACCU-2	AHU-2	55.1 MCA	480V/3PH	1 1/4"C, 4-#4, 1-#6 GROUND	HV1-26(28,30)	EC	NF	3R	100/3	X											
ACCU-3	AHU-3	160.4 MCA	480V/3PH	2"C, 4-#2, 1-#6 GROUND	LP3 SUB 3	EC	NF	3R	200/3	X											
ACCU-4	AHU-4	55.1 MCA	480V/3PH	1 1/4"C, 4-#4, 1-#6 GROUND	LP3-7(9, 11)	EC	NF	3R	100/3	X											
ACCU-5	AHU-5	355.3 MCA	480V/3PH	3 1/2"C, 4-#0KCMIL, 1-#3 GROUND	MCP	EC	NF	3R	400/3	X											
ACCU-6	2ND FL	11 MCA	208V/1PH	3/4"C, 3-#10, 1-#12 GROUND	PP1A	EC	NF	3R	30/3	X									1		
HVAC-1	2ND FL	1 MCA	208V/1PH	3/4"C, 3-#10, 1-#12 GROUND	PP1A	EC	NF	1	30/3	X									1		
HWP-AHU2	AHU-2	1.5 HP	480V/3PH	3/4"C, 4-#12, 1-#12 GROUND	LP3-34(36,38)	EC	F	1	30/3	5.6A		MC	EC								
HWP-AHU3	AHU-3	2 HP	480V/3PH	3/4"C, 4-#12, 1-#12 GROUND	LP3-34(36,38)	EC	F	1	30/3	6.25A		MC	EC								
HWP-AHU4	AHU-4	1.5 HP	480V/3PH	3/4"C, 4-#12, 1-#12 GROUND	LP3-34(36,38)	EC	F	1	30/3	5.6A		MC	EC								
EF-1	2ND FL MECH RM	3 HP	480V/3PH	3/4"C, 4-#10, 1-#10 GROUND	HV-1	EC	NF	1	30/3	X				EC	9	MC	FWR	30/3	1	3	
EF-2	1ST FL BOILER RM	3/4 HP	120V/1PH	3/4"C, 2-#12, 1-#12 GROUND	PP1A	EC	NF	1	30/1	X										4	
UH-1	2ND FL STORAGE	1/3 HP	120V/1PH	3/4"C, 2-#12, 1-#12 GROUND	PP2-27	EC	NF	1	20/1	X											
HT-1	AHU-5	1200W	277V/1PH	3/4"C, 2-#10, 1-#10 GROUND	LP3-13	EC	NF	3R	20/1	X											2
SCHEDULE ABBREVIATIONS																					
A	AMPACITY	HLO	HIGH/LOW/OFF SWITCH	MHLO	MOMENTARY HIGH/LOW/OFF SWITCH																
EC	ELECTRICAL CONTRACTOR	HOA	HAND/OFF/AUTO	NF	NON-FUSED																
EX	EXISTING EQUIPMENT	HP	HORSE POWER	O	OWNER FURNISHED AND INSTALLED																
F	FUSES	INT	INTEGRAL WITH EQUIPMENT	RLA	RUNNING LOAD AMPS																
FLA	FULL LOAD AMPS	LOR	LOCAL/OFF REMOTE SWITCH	S	ON/OFF SWITCH																
FWR	FULL VOLTAGE NON-REVERSING	M	MOMENTARY ON/OFF SWITCH	W	WATTS																
G	GENERAL CONTRACTOR	MC	MECHANICAL CONTRACTOR	XAYP	X AMP CIRCUIT BREAKER, Y POLE																
HL	HIGH/LOW SWITCH	MCA	MIN CIRCUIT AMPACITY	XAF	SWITCH WITH X AMP FUSE(S)																
REMARKS																					
1. PROVIDE AND INSTALL NEW 200A/3P BREAKER IN EXISTING PANEL. CONNECT INDOOR UNIT THROUGH OUTDOOR ACCU UNIT.																					
2. PROVIDE AND INSTALL LOCAL DISCONNECT MOUNTED ON AHU-4. COORDINATE LOCATION. WIRE THROUGH CONTROL RELAY PROVIDED BY TCC.																					
3. PROVIDE AND INSTALL NEW 480V, 15A/3P BREAKER IN PANEL LPS3. REMOVE/RELOCATE BREAKERS TO INSTALL NEW INSTALLATION.																					
4. PROVIDE AND INSTALL NEW 120V, 25A/1P BREAKER IN EXISTING PANEL PP1A. RELOCATE BREAKERS TO ALLOW NEW INSTALLATION.																					

PANEL: MDP NEW										
MOUNTING TYPE: SURFACE		MLO: 600 AMPERE SER		VOLTAGE: 277/480						
PANEL REMARKS: CUTLER HAMMER PRL4		K.A.I.C.I.: 18		PHASE: 3						
HINGED DOOR COVER, COPPER BUS, 100% RATED NEUTRAL BUS		FED FROM: UTILITY		WIRE: 4+G						
REMARKS	CKT NO.	BRK SIZE	LOAD DESCRIPTION	PHASE A (VA)	PHASE B (VA)	PHASE C (VA)	LOAD DESCRIPTION	BRK SIZE	CKT NO.	REMARKS
	1	15	PANEL LP-3	0	0	0	AHU-5 (NEW)	400A/3P		
	1	1	PUMPS 16 & 17 (2@ 3HP) / RAF-A-1	0	0	0	PUMPS 16 & 17 (2@ 1.5HP)	15A/3P	2	1
	1	3	UV SYSTEM	0	0	0	CONDENSER A2	15A/3P	4	1
	1	5	TRANSFORMER T1	0	0	0	PHASE LOSS MONITOR	70A/3P	6	1
	1	7	TRANSFORMER T2	0	0	0	ELEVATOR	70A/3P	8	1
	1	9	TRANSFORMER T3	24725	24725	24725	PUMPS 7A & 7B (4 @ 15 HP ?)	125A/3P	10	1
	1	11	PANEL LP1	0	0	0	PANEL LP2	150A/3P	12	1
	1	13	DEHUMIDIFIER #3 SPARE	0	0	0	PANEL HV-1	250A/3P	14	1
REMARKS										
1. EXISTING LOAD TO BE RECONNECTED										

PANEL: HVT EXIST										
MOUNTING TYPE: SURFACE		MLO: 250 AMPERE		VOLTAGE: 277/480						
PANEL REMARKS: EXIST SQ D TYPE NF		K.A.I.C.I.: 18		PHASE: 3						
HINGED DOOR WITHIN HINGED COVER, COPPER BUS, 100% RATED NEUTRAL BUS, FEED THROUGH LUGS		FED FROM: SEE RISER		WIRE: 4+G						
REMARKS	CKT NO.	BRK SIZE	LOAD DESCRIPTION	PHASE A (VA)	PHASE B (VA)	PHASE C (VA)	LOAD DESCRIPTION	BRK SIZE	CKT NO.	REMARKS
	1			0	0	0			2	
OFF	3	50A/3P	SPARE	0	0	0	SPARE	40A/3P	4	OFF
	5			0	0	0			6	
	7			0	0	0			8	
	9	30A/3P	PUMPS 1 & 2	0	0	0	SPARE	30A/3P	10	OFF
	11			0	0	0			12	
	15			0	0	0			14	
	1	15A/3P	EF-1	0	0	0	HWRP-1	15A/3P	16	
	19			0	0	0			18	
	21			0	0	0	ACCU-1	35A/3P	22	1
	23		SHUNT TRIP	0	0	0			24	1
	25			0	0	0			26	1
	27	25A/3P ST	BOILERS 1 & 3	0	0	0	ACCU-2	70A/3P	28	1
	29			0	0	0			30	1
REMARKS										
1. PROVIDE AND INSTALL NEW BREAKER										
2. CIRCUIT BREAKER TO BE GFCI TYPE.										

PRIMARY ENGINEERING INC
Indianapolis
2828 Lake Ave.
Fort Wayne, Indiana 46805
www.primaryeng.com

FORT WAYNE COMMUNITY SCHOOLS
HELEN P. BROWN NATATORIUM
HVAC IMPROVEMENTS
3301 S Calhoun St, Fort Wayne, IN 46807

CERTIFICATION:
Professional Engineer
No. PE 030239
STATE OF INDIANA
M.D. Edwards

DATE: 02.24.2025
COMM: 24634

TITLE:
ELECTRICAL DETAILS AND SCHEDULES

SHEET:
E401