

**Addendum No:** 02 **Date:** 4-8-2025  
**Project:** Butler County ESC Renovations **Project Number:** 25120.00

The following Addendum contains clarifications and revisions to the construction documents issued for bid 3/24/2025 for the above-mentioned project. This addendum forms a part of the Contract Documents and modifies all previously issued specifications and drawings. Bidders shall update their Bidding Documents with the information contained in this Addendum. Where new Drawings are enclosed with this Addendum, discard the old Drawing and insert the new. Where Supplemental drawings are enclosed with this Addendum, attach the Supplemental drawing to the documents as noted. Where only written modifications are given, copy the information onto the appropriate Documents and note the Addendum number. All items contained herein shall be included with the Bid. Acknowledge receipt of this addendum by inserting the number and date on the bid form.

Note: This addendum  does  does not modify the bid due date.

### General

1.A Summary of revisions is as follows:

- a. Revised Mechanical and Fire Protection drawings to coordinate with Addendum 1 changes in the main entry Lobby.

### Drawings

1.B Sheet: M1.00

- a. Revised scope of HVAC work in main Lobby/Reception 102A, Waiting Room 107A, and Waiting Room 103A to maintain existing.

1.C Sheet: M1.01

- a. Revised scope of HVAC work in main Lobby/Reception 102A, Waiting Room 107A, and Waiting Room 103A to maintain existing.

1.D Sheet: F1.00

- a. Sheet is being reissued for clarity to align with plan and scope changes.

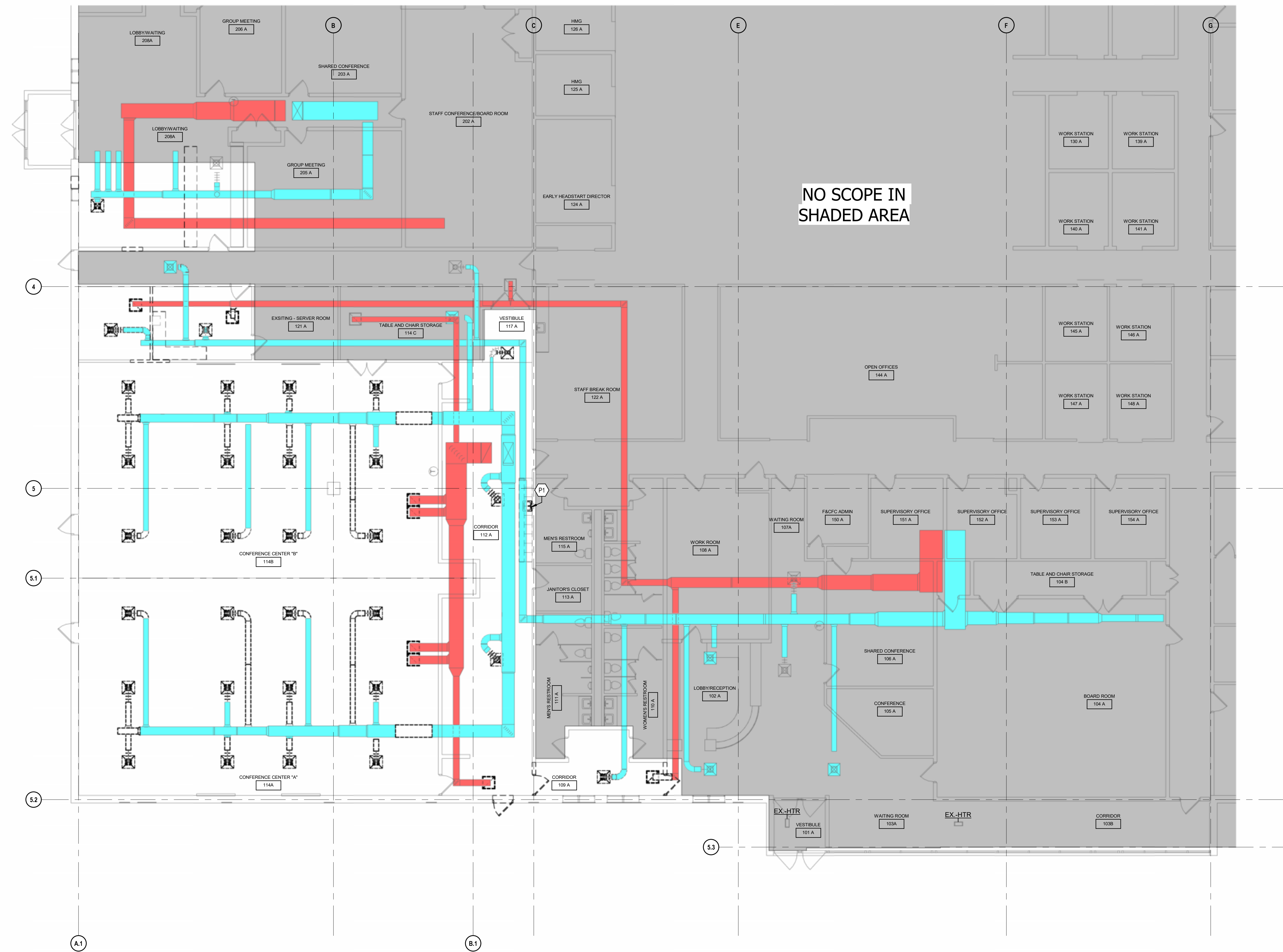
### Summary of Attachments

#### **Drawings**

F1.00	Fire Suppression New Work Plan	4-8-25
M1.00	Mechanical Demolition Plan	4-8-25
M1.01	Mechanical New Work Plan	4-8-25

**END OF ADDENDUM**

**TAGGED NOTES**  
P1 REMOVE EXISTING SINK IN CORRIDOR AND CAP EXISTING PIPING BEHIND THE WALL.



**EDUCATIONAL SERVICE CENTER**  
**BUTLER COUNTY**  
400 N ERIE HWY STE A, HAMILTON, OH 45011

This drawing and the design concepts represented, as instruments of service, are the sole property of MSA DESIGN and may not be used, reproduced, or copied in whole or part, for any purpose without the written authorization of MSA DESIGN.  
Copyright MSA DESIGN  
MSA DESIGN All Rights Reserved  
MSA SPORT is a division of MSA DESIGN

NO.	DATE	ISSUED / REVISION
1	03/14/2025	50% CDs
2	03/26/2025	BID/PERMIT
3	04/07/2025	ADDENDUM 1

PROJECT NO. 25120.00  
DRAWING TITLE:  
MECHANICAL  
DEMOLITION PLAN

**MECHANICAL DEMOLITION PLAN**  
1  
M1.00  
1/8" = 1'-0"

**M1.00**



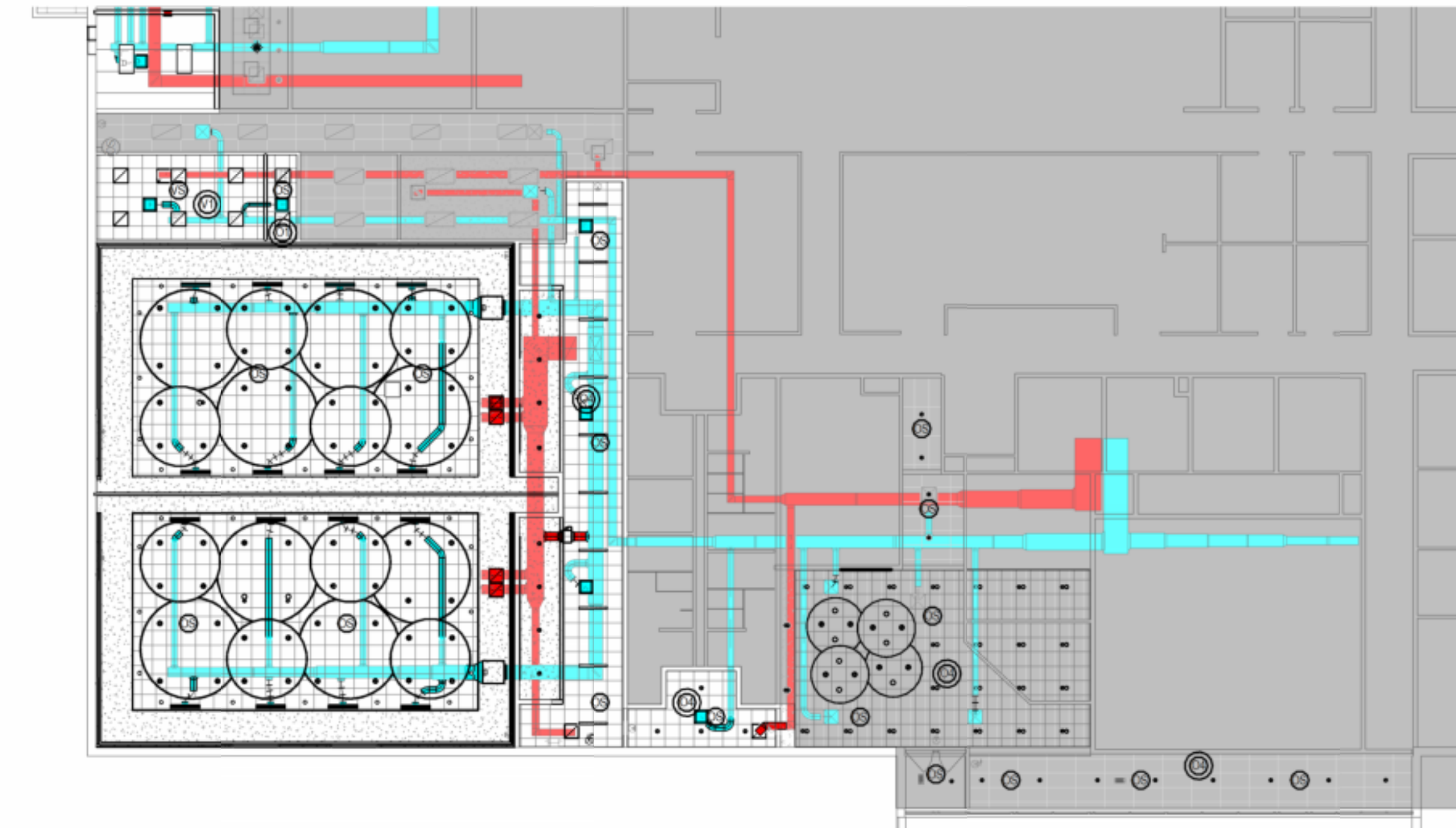
REGISTERS, GRILLES, AND DIFFUSERS						
TAG	MANUFACTURER	MODEL #	TYPE	PANEL SIZE	DUCT INLET SIZE	COLOR
LD-01	PRICE	JS	(1) 2" SLOT LINEAR SLOT DIFFUSER	48"	10"Ø	WHITE
RG-01	PRICE	530	STEEL RETURN GRILLE	24"x24"	N/A	WHITE
RG-02	PRICE	530	STEEL RETURN GRILLE	12"x6"	N/A	WHITE
SD-01	PRICE	SPD	SQUARE PLAQUE DIFFUSER	24"x24"	10"Ø	WHITE
SD-03	PRICE	SPD	SQUARE PLAQUE DIFFUSER	24"x24"	6"Ø	WHITE
SD-04	PRICE </td <td>SPD</td> <td>SQUARE PLAQUE DIFFUSER</td> <td>24"x24"</td> <td>12"Ø</td> <td>WHITE</td>	SPD	SQUARE PLAQUE DIFFUSER	24"x24"	12"Ø	WHITE
SD-VAV1	PRICE	SPD	VARITHERM VAV DIFFUSER	24"x24"	8"Ø	WHITE

VVT BOX SCHEDULE								
MARK	MANUFACTURER	MODEL #	BOX TYPE	DUCT CONNECTIONS		MAX. CFM	MIN. CFM	REMARKS
				INLET SIZE				
VVT-BYPASS	PRICE	PCV	ROUND	14"		3000	0	
VVT-01	PRICE	SDV	RECTANGULAR	24"x16"		2700	540	
VVT-02	PRICE	SDV	RECTANGULAR	24"x16"		2700	540	

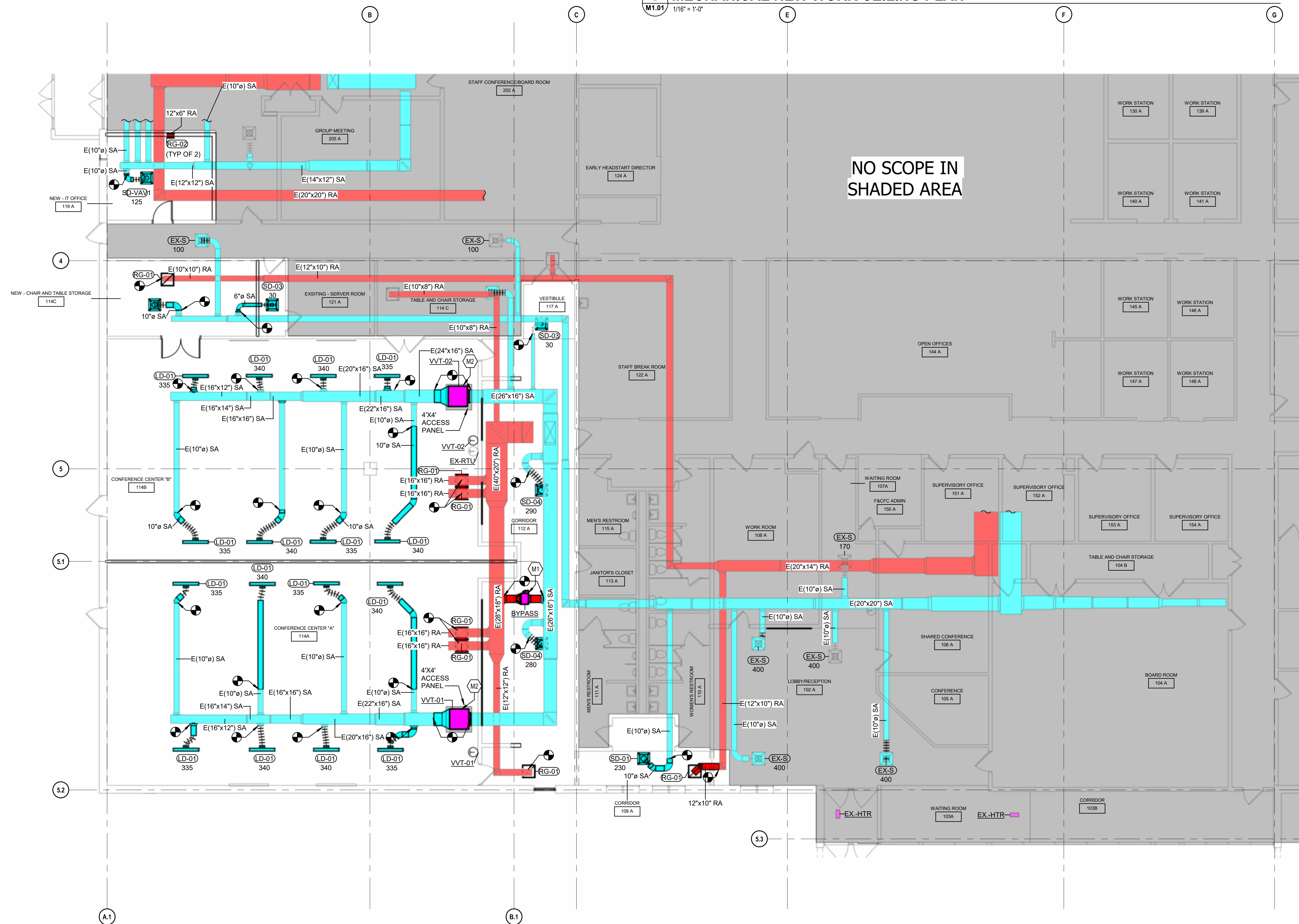
**TAGGED NOTES**

M1 PROVIDE PRICE (OR EQUAL) PRESSURE CONTROL VALVE WITH CONTROLLER AND DUCT PRESSURE SENSOR. SENSOR SHALL BE MOUNTED IN THE SUPPLY AIR DUCT 2/3 OF THE WAY DOWN THE MAIN DUCT RUN. DAMPER SHALL MODULATE TO PROVIDE CONSISTANT DUCT PRESSURE BASED ON THE OPENING AND CLOSING OF THE NEW VVT DAMPERS.

M2 PROVIDE NEW VVT DAMPERS AND JACE (OR SIMILAR) PROGRAMMABLE SYSTEM CONTROLLER WITH NEW THERMOSTATS IN EACH SPACE.



2 MECHANICAL NEW WORK CEILING PLAN  
M1.01 1/16" = 1'-0"



1 MECHANICAL NEW WORK PLAN  
M1.01 1/8" = 1'-0"

EDUCATIONAL SERVICE CENTER  
BUTLER COUNTY  
400 N ERIE HWY STE A, HAMILTON, OH 45011

This drawing and the design concepts represented, as instruments of service, are the sole property of MSA DESIGN, and may not be used, reproduced, or copied in whole or part, for any purpose without the written authorization of MSA DESIGN.  
Copyright MSA DESIGN  
MSA DESIGN All Rights Reserved  
MSA SPORT is a division of MSA DESIGN

NO.	DATE	ISSUED / REVISION
1	03/14/2025	50% CDs
2	03/26/2025	BID/PERMIT
3	04/07/2025	ADDENDUM 1

PROJECT NO. 25120.00

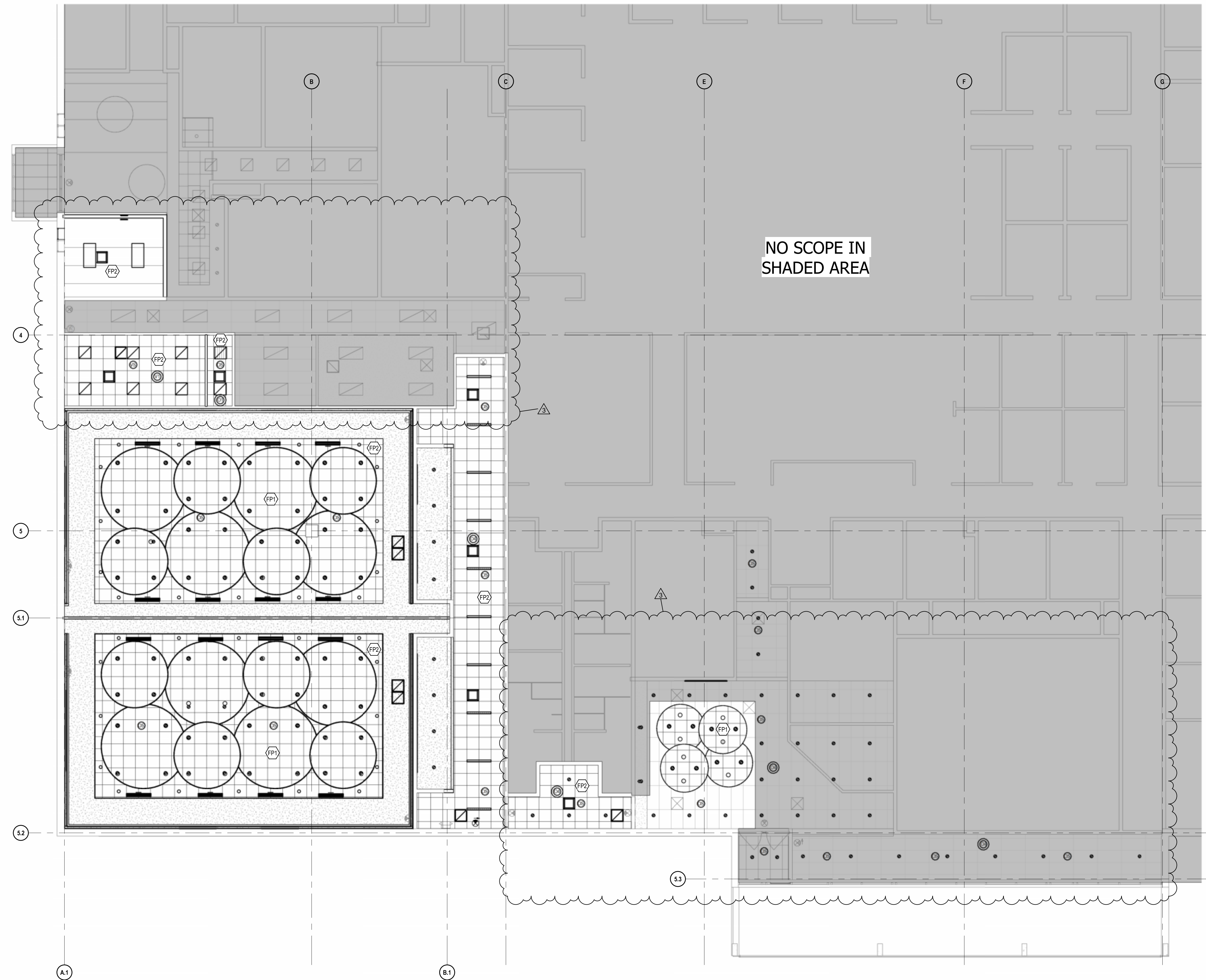
DRAWING TITLE:  
MECHANICAL NEW WORK PLAN

M1.01





TAGGED NOTES		#
FP1	REWORK EXISTING FIRE PROTECTION IN THIS AREA. CEILING HAS CLOUD FEATURES THAT WILL REQUIRE SPRINKLERS ABOVE AND BELOW THE CLOUDS. PROVIDE CONCEALED HEADS AREAS WITH CEILINGS.	
FP2	REWORK EXISTING FIRE PROTECTION IN THIS AREA. PROVIDE CONCEALED HEADS IN AREAS WITH CEILINGS.	



NO SCOPE IN  
SHADED AREA

**EDUCATIONAL SERVICE CENTER**  
**BUTLER COUNTY**  
400 N ERIE HWY STE A, HAMILTON, OH 45011

This drawing and the design concepts represented, as instruments of service, are the sole property of MSA DESIGN, and may not be used, reproduced, or copied in whole or part, for any purpose without the written authorization of MSA DESIGN.  
Copyright MSA DESIGN  
MSA DESIGN All Rights Reserved  
MSA SPORT is a division of MSA DESIGN

NO.	DATE	ISSUED / REVISION
1	03/14/2025	50% CDs
2	03/26/2025	BID/PERMIT
3	04/07/2025	ADDENDUM 1

PROJECT NO. 25120.00

DRAWING TITLE:  
FIRE SUPPRESSION  
NEW WORK PLAN

**F1.00**

**1**  
**F1.00** FIRE PROTECTION NEW WORK PLAN  
1/8" = 1'-0"