



Project # 25004 – SJCPL LaSalle Branch Renovation/Addition
3232 Ardmore Trail, South Bend, IN 46628

ADDENDUM No. 3

April 21st, 2025

This addendum and MEP addendum hereby becomes part of the Contract Documents. Each bidder shall acknowledge receipt of this addendum by number on the Bid Form.

It is each Prime Contractor's responsibility to notify all subcontractors of this addendum and provide copies for all sets of plans in their possession.

Item	Description
------	-------------

1. General Items:

- (a) Correction to Addendum #2 description of furniture remaining in the building for demolition:
 - i. All furniture to be retained by the owner will be moved off-site prior to construction. Following a furniture sale, the owner believes there will at most be 33% remaining of all furniture AND library shelving remaining in the building. This 33% of furniture and shelving remaining in the building shall be demolished/removed by the contractor.

2. Specification 087100 – Door Hardware

- (a) **Addition:** Add Hardware Set #013 for doors 130A and 130B, which are listed as part of Alternate #1.

3. Sheet A-201 – Building Elevations & Sections

- (a) **Modification:** Modify Elevation Note #1 to read: EXISTING WINGWALLS TO REMAIN. REPAINT SIDING ON EACH SIDE OF ALL WINGWALLS. COORDINATE WITH CONTRACTOR ON NEW ROOF LOCATION.
- (b) **Modification:** Modify Elevation Note #8 to read: NEW FIBER CEMENT SIDING AND TRIM AT EXTERIOR COLUMN ENCLOSURE.

4. Attachments:

- (a) **Architectural Specifications:** 087100
- (b) **Architectural Sheets:** A-201



435 E. Brackenridge St.
Fort Wayne, IN 46802
260.422.0783



3500 Depauw Blvd., Ste. 1089
Indianapolis, IN 46268
317.792.5020

mkmdesign.com
info@mkmdesign.com

End of Addendum 3

Sincerely,

MKM architecture + design

A handwritten signature in black ink, appearing to read "B. McHugh". The signature is fluid and cursive, with the first name "Benjamin" and last name "McHugh" clearly distinguishable.

Benjamin D. McHugh, AIA,
Associate

*P:\25004 St. Joe County Public Library LaSalle Branch\Drawing\4Contract\Addenda\Addendum 3\01_2025-04-21_SJCPL
LaSalle_Addendum 3 - Cover.docx*

SECTION 08710 - DOOR HARDWARE

PART 1- GENERAL

1.1 RELATED DOCUMENTS

- A. Drawings and general provisions of Contract, including General and Supplementary Conditions and Division 1 Specification Sections, apply to this Section.

1.2 SUMMARY

- A. This section includes items known commercially as finish or door hardware that are required for swing, sliding, and folding doors, except special types of unique hardware specified in the same sections as the doors and door frames on which they are installed.
- B. This section includes the following:
 - 1. Hinges.
 - 2. Lock cylinders and keys.
 - 3. Lock and latch sets.
 - 4. Wall, Floor Stops, & Bolts.
 - 5. Exit Devices.
 - 6. Push/pull units.
 - 7. Overhead Closers and Automatic Door Operators.
 - 8. Overhead Stops & Holders.
 - 9. Kick, Mop, and Armor Plates.
 - 10. Gasketing & Seals.
- C. Related Sections: The following Sections contain requirements that relate to this Section:
 - 1. Division 6 Section "Interior Architectural Woodwork" for cabinet hardware.
 - 2. Division 8 Section "Standard Steel Doors and Frames" for silencers integral with hollow metal frames.
 - 3. Division 8 Section "Flush Wood Doors" for factory prefitting and factory premachining of doors for door hardware.

1.3 SUBMITTALS

- A. General: Submit the following in accordance with Conditions of Contract and Division 1 Specification sections.
- B. Product data including manufacturer's technical product data for each item of door hardware, installation instructions, maintenance of operating parts and finish, and other information necessary to show compliance with requirements.

Final hardware schedule coordinated with doors, frames, and related work to ensure proper size, thickness, hand, function, and finish of door hardware.

1. Final Hardware Schedule Content: Based on hardware indicated, organize schedule into “hardware sets” indicating complete designations of every item required for each door or opening. Include the following information:
 - a. Type, style, function, size, and finish of each hardware item.
 - b. Name and manufacturer of each item.
 - c. Fastenings and other pertinent information.
 - d. Location of each hardware set cross referenced to indications on Drawings both on floor plans and in door and frame schedule.
 - e. Explanation of all abbreviations, symbols, and codes contained in schedule.
 - f. Mounting locations for hardware.
 - g. Door and frame sizes and materials.
 - h. Keying information.
 2. Submittal Sequence: Submit final schedule at earliest possible date particularly where acceptance of hardware schedule must precede fabrication of other work that is critical in the Project construction schedule. Include with schedule the product data, samples, shop drawings of other work affected by door hardware, and other information essential to the coordinated review of schedule
 3. Keying Schedule: Submit separate detailed schedule indicating clearly how the Owner’s final instructions on keying of locks has been fulfilled.
- C. Templates for doors, frames, and other work specified to be factory prepared for the installation of door hardware. Check shop drawing of other work to confirm that adequate provision are made for locating and installing door hardware to comply with indicated requirements.
- D. When matching an existing facility, an onsite coordinated walk through by door hardware supplier and general contractor shall take place. Lever style of locksets, lengths of hardware such as push bars & pull handles or any other unique hardware applications that may deviate from the specified hardware, shall be noted during the submittal to match for approval. Verification of these existing conditions, with intent to remain with the same hardware manufacturers and finishes, are required prior to procurement.

1.4 QUALITY ASSURANCE

- A. Single Source Responsibility: Obtain each type of hardware (latch and lock sets, hinges, closers, etc.) From a single manufacturer
- B. Supplier Qualification: A recognized architectural door hardware supplier, with warehousing facilities within 50 miles of the job site that has a record of successful in-service performance for supplying door hardware similar in quantity, type, and quality to that indicated for this Project and that employs an experienced architectural hardware consultant who is available to Owner, Architect, and Contractor, at reasonable times during the course of the Work, for consultation.

1. Require supplier to meet with Owner to finalize keying requirements and to obtain final instructions in writing.

- C. Fire-Rated Openings: Provide door hardware for fire-rated openings that complies with NFPA Standard No. 80 and requirements of authorities having jurisdiction. Provide only items of door hardware that are listed and are identical to Protect tested by UL, Warnock Hersey, FM, or other testing and inspecting organization acceptable to authorities having jurisdiction for use on types and sizes of door indicated in compliance with requirements of fire-rated door and door frame labels

1.5 PRODUCT HANDLING

- A. Tag each item or package separately with identification related to final hardware schedule, and include basic installation instructions with each item or package.
- B. Packaging of door hardware is responsibility of supplier. As material is received by hardware supplier from various manufacturers, sort and repackage in containers clearly marked with appropriate hardware set number to match set number of approved hardware schedule. Two or more identical sets may be packed in same container.
- C. Inventory door hardware jointly with representative of hardware supplier and hardware installer until each is satisfied that count is correct.
- D. Deliver individually packaged door hardware items promptly to place of installation (shop or Project site).
- E. Provide secure lock-up for door hardware delivered to the Project, but not yet installed. Control handling and installation of hardware items that are not immediately replaceable so that completion of the Work will not be delayed by hardware losses both before and after installation.

1.6 MAINTENANCE

- A. Maintenance Tools and Instructions: Furnish a complete set of specialized tools and maintenance instructions as needed for Owner's continued adjustment, maintenance, and removal and replacement of door hardware.

PART 2 - PRODUCTS

2.1 MANUFACTURERS

- A. Available Manufacturers: subject to compliance with requirements, manufacturers offering products that may be incorporated in the work include the following: (Manufacturer whose name is prefixed with an asterisk *, indicates the manufacturer whose products are listed in the schedule at the end of this section.)
 1. Hinges:
 - a. * Ives
 - b. Stanley

- c. Hager
- 2. Lock Cylinders and Keys:
 - a. *BEST
- 3. Lock and Latchsets:
 - a. *BEST
- 4. Wall, Floor Stops, & Bolts:
 - a. * Ives
 - b. Rockwood
- 5. Exit Devices
 - a. *Von Duprin
 - b. Sargent
- 6. Push/Pull Units:
 - a. * Ives
 - b. Rockwood
- 7. Overhead Closers and Automatic Door Operators:
 - a. *LCN
 - b. Sargent
- 8. Overhead Stops & Holders:
 - a. * Glynn Johnson
- 9. Kick, Mop, and Armor Plates:
 - a. * Ives
 - b. Rockwood
- 10. Gasketing & Seals:
 - a. * NGP
 - c. Pemko

2.2 SCHEDULED HARDWARE

- A. Requirements for design, grade, function, finish, size, and other distinctive qualities of each type of finish hardware are indicated in the “Hardware Schedule” at the end of this Section. Products are identified by using hardware designation numbers of the following:
 - 1. Manufacturer’s Product Designation: The product designation and name of one manufacturer are listed for each hardware type required for the purpose of establishing minimum requirements. Provide either the product designated or, where more than one manufacturer is specified under the Article “Manufacturers” in Part 2 for each hardware type, the comparable product of one of the other manufacturers that complies with requirements.

2.3 MATERIALS AND FABRICATION

- A. Manufacturer's Name Plate: Do not use manufacturers' products that have manufacturer's name or trade name displayed in a visible location (omit removable nameplates) except in conjunction with required fire-rated labels and as otherwise acceptable to Architect.
 - 1. Manufacturer's identification will be permitted on rim of lock cylinders only.
- B. Base Metals: Produce hardware units of basic metal and forming method indicated using manufacturer's standard metal alloy, composition, temper, and hardness, but in no case of lesser (commercially recognized) quality than specified for applicable hardware unit for finish designations indicated.
- C. Fastener: provide hardware manufactured to conform to published templated, generally prepared for machine screw installation. Do not provide hardware that has been prepared for self-tapping sheet metal screws, except as specifically indicated.
- D. Furnish screws for installation with each hardware item. Provide Phillips flat-head screws except as otherwise indicated. Finish exposed (exposed under any condition) screws to match hardware finish or, if exposed in surfaces of other work, to match finish of this other work as closely as possible including "prepared for paint" surfaces to receive painted finish.

2.4 HINGES, BUTTS, AND PIVOTS

- A. Templates: Except for hinges and pivots to be installed entirely (both leaves) into wood doors and frames, provide only template-produced units.
- B. Screws: Provide Phillips flat-head screws complying with the following requirements:
 - 1. For metal doors and frames install machine screws into drilled and tapped holes.
 - 2. For wood doors and frames install wood screws.
 - 3. For fire-rated wood doors install #12 x 1 1/4-inch (32mm), threaded-to-the-head steel wood screws.
 - 4. Finish screw heads to match surface of hinges or pivots
- C. Hinge Pins: Except as otherwise indicated, provide hinge pins as follows:
 - 1. Out-Swing Exterior Doors: Nonremovable pins.
 - 2. Interior Doors: Non rising pins.
 - 3. Tips: Flat button and matching plug, finished to match leaves, except where hospital tip (HT) indicated.
- D. Number of Hinges: Provide number of hinges indicated but not less than 3 hinges per door leaf for doors 90 inches (2250mm) or less in height and one additional hinge for each 30 inches (750mm) of additional height.
 - 1. Fire-Rated Doors: Not less than 3 hinges per door leaf for doors 86 inches (2150mm) or less in height with same rule for additional hinges.

2.5 LOCK CYLINDERS AND KEYING

- A. Provide DormaKaba BEST IC interchangeable cores integrated into Owner's existing master key system. Allow for 3 change keys per lock/cylinder and a total of 6 master keys.

2.6 LOCKS, LATCHES, AND BOLTS

- A. Strikes: Provide manufacturer's standard wrought box strike for each latch or lock bolt, with curved lip extended to protect frame, finished to match hardware set, unless otherwise indicated.
 - 1. Provide flat lip strikes for locks with 3-piece, antifriction latch bolts as recommended by manufacturer.
 - 2. Provide extra-long strike lips for locks used on frames with applied wood casing trim.
 - 3. Provide recess type top strikes for bolts locking into head frames, unless otherwise indicated.
- B. Lock Throw: Provide 5/8-inch (16mm) minimum throw of latch on pairs of doors. Comply with UL requirements for throw of bolts and latch bolts on rated fire openings.
 - 1. Provide 1/2-inch (13mm) minimum throw of latch for other bored and preassembled types of locks and 3/4-inch (19mm) minimum throw of latch for mortise locks. Provide 1-inch (25mm) minimum throw for all dead bolts.
- C. Flush Bolt Heads: Minimum of 1/2-inch (13mm) diameter rods of brass, bronze, or stainless steel with minimum 12-inch (300mm) long rod for doors up to 84 inches (2100mm) in heights. Provide longer rods as necessary for doors exceeding 84 inches (2100mm) in height.
- D. Exit Device Dogging: Except on fire-rated doors where closers are provided on doors equipped with exit devices, equip the unit with keyed dogging device to keep the latch bolt retracted, when engaged.

2.7 PUSH/PULL UNITS

- A. Exposed Fasteners: Provide manufacturer's standard exposed fasteners for installation, thru-bolted for matched pairs but not for single units.
- B. Concealed Fasteners: Provide manufacturer's special concealed fastener system for installation, thru-bolted for matched pairs but not for single units.

2.8 CLOSERS AND DOOR CONTROL DEVICES

- A. Size of Units: Except as otherwise specifically indicated, comply with the manufacturer's recommendations for size of door control unit depending on size of door, exposure to weather, and anticipated frequency of use.
 - 1. Where parallel arms are indicated for closers, provide closer unit one size larger than recommended for use with standard arms.
 - 2. Provide parallel arms for all overhead closers, except as otherwise indicated.

- B. Access-Free Manual Closers: Where manual closers are indicated for doors required to be accessible to the physically handicapped, provide adjustable units complying with ANSI A117.1 provisions for door opening force and delayed action closing.
- C. Combination Door Closers and Holders: Provide units designed to hold door in open position under normal usage and to release and close door automatically under fire conditions. Incorporate an integral electromagnetic holder mechanism designed for use with UL listed fire detectors, provided with normally closed switching contacts.

2.9 DOOR TRIM UNITS

- A. Fasteners: Provide manufacturer's standard exposed fasteners for door trim units consisting of either machine screws or self-tapping screws.
- B. Fabricate edge trim of stainless steel to fit door thickness in standard lengths or to match height of protection plates.
- C. Fabricate protection plates not more than 2 inches less than door width on the push side by the height indicated.

- 1. Metal Plates: Stainless Steel, .050 inch (U.S. 16 gage) (1.6mm).

2.10 HARDWARE FINISHES

- A. Match items to the manufacturer's standard color and texture finish for the latch and lock sets (for push-pull units if no latch or lock sets).
- B. Provide quality of finish, including thickness of plating or coating (if any), composition, hardness, and other qualities complying with manufacturer's standards, but in no case less than specified by referenced standards for the applicable units of hardware.
- C. The designations used in schedules and elsewhere to indicate hardware finishes are the industry recognized standard commercial finishes, except as otherwise noted.
 - 1. Rust-Resistant Finish: For iron and steel base metal required for exterior work and in areas shown as "High Humidity" areas (and also when designed with the suffix-RR), provide 0.2ml (0.005mm) thick copper coating on base metal before applying brass, bronze, nickel, or chromium plated finishes.

PART 3 - EXECUTION

3.1 INSTALLATION

- A. Mount hardware units at heights indicated in following applicable publication, except as specifically indicated or required to comply with governing regulation and except as otherwise directed by Architect.

1. "Recommended Locations for Builders Hardware for Standard Steel Doors and Frames" by the Door and Hardware Institute.

- B. Install each hardware item in compliance with the manufacturer's instructions and recommendations. Where cutting and fitting is required to install hardware onto or into surfaces that are later to be painted or finished in another way, coordinate removal, storage, and reinstallation or application of surface protection with finishing work specified in the Division 9 Section. Do not install surface mounted items until finishes have been completed on the substrates involved.
- C. Set units level, plumb, and true to line and location. Adjust and reinforce the attachment substrate as necessary for proper installation and operation.
- D. Drill and countersink units that are not factory prepared for anchorage fasteners. Space fasteners and anchors in accordance with industry standards.
- E. Set thresholds for exterior doors in full bed of butyl-rubber or polyisobutylene mastic sealant complying with requirements specified in Division 7 Section "Joint Sealers."
- F. Weatherstripping and Seals: Comply with manufacturer's instructions and recommendations to the extent installation requirements are not otherwise indicated.

3.2 ADJUSTING, CLEANING, AND DEMONSTRATING

- A. Adjust and check each operating item of hardware and each door to ensure proper operation or function of every unit. Replace units that cannot be adjusted to operate freely and smoothly or as intended for the application made.
- B. Clean adjacent surfaces soiled by hardware installation.
- C. Instruct Owner's personnel in proper adjustment and maintenance of door hardware and hardware finishes.

3.3 ELECTRONIC DOOR HARDWARE (RESPONSIBILITY)

- A. Hardware supplier is responsible to furnish and install all low voltage wiring for all electronic door hardware provided in this section, including electronic exit devices, power supplies, power transfers, electric strikes, electric locks, automatic door operators, operator push button or hands-free actuators, and other electronic door hardware specified and provided as part of this specification section. Hardware supplier is also required to install automatic door operators and actuators with factory trained installers and return at completion of project to make final adjustments and instruct owner in use/adjustment of equipment.
- B. Installers are required to be factory trained/certified by manufacturers of electronic door hardware.
- C. Electrical Contractor (EC) is responsible to furnish and install 120VAC power to all power supplies, automatic operator headers, and other locations required, noted herein, and/or shown on the electrical drawings.
 - 1. EC is also responsible to provide and install all conduit and/or wire chases for low voltage wiring and all required electrical boxes and junction boxes for electronic hardware – including, but not limited

to: Electric Strikes, Electric Power Transfers (EPT), Key Switches, Automatic Door Operators, Push or Hands-Free Actuators.

2. EC is also responsible for all low voltage wiring of Door Position Switches (DPS). Frame and door contacts to be factory concealed/mortised, but will not be installed or wired by frame/door supplier.

D. Hardware Supplier is to meet with Electrical Contractor (EC) early during the construction period to instruct EC in requirements for power and for low voltage conduit/chases. Hardware supplier and EC are to communicate continually during construction as necessary to coordinate power with low voltage electronic hardware requirements.

E. Access Control System and all materials by the Division 28 security contractor are to be furnished, installed and wired by that contractor for all access control and security hardware devices – including, but not limited to: All Power Supplies. Credential Readers (CR) where mounted on frame jamb faces, or door integrated hardware access CRs. All templates for concealed/mortised hardware in frames and doors need to be provided to the Architect and returned with frame/door/hardware submittals to be included during procurement of Division 08 materials.

3.4 HARDWARE SCHEDULE

- A. General: Provide hardware for each door to comply with requirements of Section “Door Hardware,” hardware set numbers indicated in door schedule, and in the following schedule of hardware sets.

Hardware Sets

Set #001

Doors: 100A

1	Continuous Hinge	112HD 83" EPT	628	IV
1	Continuous Hinge	112HD 83"	628	IV
1	Steel Mullion	KR4954 7'6"	SP28	VO
1	Exit Device	SD-QEL 99NL-OP x 110MD-NL	US26D	VO
1	Exit Device	CD 99EO	US26D	VO
1	Rim Cylinder	12E-72 PATD	626	BE
3	Mortise Cylinder	1E-74 PATD	626	BE
2	Door Pull	8190EZHD-2	US32D316	IV
1	Closer	4040XP RWPA	AL	LC
1	Adapter Plate	4040XP-18PA	AL	LC
1	Automatic Operator	9542 REGARM HDR2	AL	LC
2	Overhead Stop	104S	US32D	GL
1	Power Supply	PS902 900-2RS		VO
1	Electric Power Transfer	EPT 10	SP28	VO
1	Time Delay	TDM		MSED
2	Door Sweep	D698 A 36"		NA
1	Threshold	896 V 72"	AL	NA

NOTE: Perimeter seal by door manufacturer. Operation: Ingress by pull handles when exit devices are dogged by key cylinder during normal business hours or by RHR active automatic operator actuator button from outside. Doors locked after business hours by undogging cylinders. Free egress during business hours by RHR vestibule automatic operator actuator button, only when exit devices are cylinder dogged. When undogged, automatic operator will not allow ingress or egress. Free egress by exit device at all times. See contract plans for actuator locations.

Set #002

Doors: 100B

2	Continuous Hinge	112HD 83"	628	IV
2	Push/Pull Combo	9190EZHD-2 32"	US32D316	IV
1	Closer	4040XP RWPA	AL	LC
1	Automatic Operator	9542 REGARM HDR2	AL	LC
2	Overhead Stop	104S	US32D	GL
1	Actuator	59HSS		MSED
1	Wall Actuator-Double	59V-HSS		MSED

NOTE: Operation: Ingress by pull handles or by LHR active automatic operator actuator button from vestibule. Free egress by push bar or lobby actuator button at all times. See contract plans for actuator locations.

Set #003

Doors: 101

Set #003

3 Hinges	5BB1 5 x 4 1/2	652	IV
1 Lockset	9K3-7D16C PATD S3	626	BE
1 Overhead Stop	105S	US32D	GL
1 Protection Plate	8400 4" x 40" B-CS	US32D	IV

Set #004

Doors: 102

3 Hinges	5BB1 4 1/2 x 4 1/2 NRP	630	IV
1 Lockset	9K3-7D16C PATD S3	626	BE
1 Closer	4040XP RW62A	AL	LC
1 Overhead Stop	904S	US32D	GL
1 Latch Protector	PLP-211-EBF	DU	DJ
1 Gasketing	A626 A 1 x 36" 2 x 84"		NA
1 Drip Cap	16 A 40"		NA
1 Door Sweep	D698 A 36"		NA
1 Threshold	896 V 36"	AL	NA

Set #005

Doors: 107

1 Electric Strike	6211	US32D	VO
1 Closer	1461 REGARM	AL	LC
1 Power Supply	PS902		VO

NOTE: Existing opening to receive new CR. Credential Reader (CR) by others. Operation: Ingress by CR or key. Free egress at all times. Verify the following prior to procurement: 1. Existing BEST lockset is storeroom function, 626 finish. If yes, do not procure new (in this set) and leave existing. 2. Existing door has closer. If yes, do not procure new (in this set).

Set #006

Doors: 108A

3 Hinges	5BB1 4 1/2 x 4 1/2	652	IV
1 Exit Device	99L x 996L-R&V 99-ALK-RX	US26D	VO
1 Rim Cylinder	12E-72 PATD	626	BE
1 Mortise Cylinder	1E-74 PATD	626	BE
1 Closer	1461 RWPA	AL	LC
1 Protection Plate	8400 8" x 34" B-CS	US32D	IV
1 Protection Plate	8400 4" x 34" B-CS	US32D	IV
1 Wall Stop	WS406/407CCV	US32D	IV
1 Electric Power Transfer	EPT 10	SP28	VO
1 Power Supply	PS902 900-2RS		LO

NOTE: Verify cylinder requirements (including cam, size and finish) prior to procurement for ALK shunt in exit.

Set #007

Doors: 110, 111, 112, 113, 114

NOTE: Existing hardware to remain.

Set #008

Doors: 115, 131

3 Hinges	5BB1 4 1/2 x 4 1/2	652	IV
1 Lockset	9K3-7D16C PATD S3	626	BE
1 Protection Plate	8400 8" x 34" B-CS	US32D	IV
1 Wall Stop	WS406/407CCV	US32D	IV

Set #009

Doors: 117, 118, 126

3 Hinges	5BB1 4 1/2 x 4 1/2	652	IV
1 Deadbolt	B572	626	SC
1 Passage Set	9K3-0N16C S3	626	BE
1 Protection Plate	8400 8" x 34" B-CS	US32D	IV
1 Wall Stop	WS406/407CCV	US32D	IV

Set #010

Doors: 121, 123

4 Hinges	5BB1 4 1/2 x 4 1/2	652	IV
1 Protection Plate	8400 8" x 34" B-CS	US32D	IV
1 Wall Stop	WS406/407CCV	US32D	IV

NOTE: Owner provided RemoteLok 6500 series. Coordinate with Owner for templating for frame/door preps prior to procurement.

Set #011

Doors: 129

6 Hinges	5BB1 4 1/2 x 4 1/2	652	IV
1 Manual Flush Bolt	FB358	US26D	IV
NOTE: Manual flush bolt for wood door applications.			
1 Lockset	9K3-7D16C PATD S3	626	BE
1 Overhead Stop	104S	US32D	GL
2 Protection Plate	8400 8" x 34" B-CS	US32D	IV
2 Protection Plate	8400 4" x 34" B-CS	US32D	IV
1 Wall Stop	WS406/407CCV	US32D	IV

Set #012

Doors: 130

3 Hinges	5BB1 4 1/2 x 4 1/2 NRP	630	IV
1 Lockset	9K3-7D16C PATD S3	626	BE
1 Closer	4040XP RW62A	AL	LC
1 Overhead Stop	904S	US32D	GL
1 Latch Protector	PLP-211-EBF	DU	DJ
1 Gasketing	A626 A 1 x 36" 2 x 84"		NA
1 Drip Cap	16 A 40"		NA
1 Door Sweep	D698 A 36"		NA
1 Threshold	896 V 36"	AL	NA

Set #013 (ADDED IN ADDENDUM #3)

Doors: 130A, 130B

8 Hinges	5BB1 4 1/2 x 4 1/2	652	IV
1 Deadlock	MS1850SN410-X5X	628	AD
1 Mortise Cylinder	20-001 1 1/8"	626	SC
2 Push/Pull Combo	9190EZHD-2 32"	US32D316	IV
NOTE: Verify CTC stile dimensions with door supplier prior to ordering.			
2 Closer	1461 HWP	AL	LC
2 Wall Stop	WS406/407CCV	US32D	IV

NOTE: Verify cylinder requirements (including size and finish) with door supplier prior to ordering.

Manufacturer List

Code	Name
AD	Adams Rite
BE	Best Access Systems
DJ	Don-Jo
GL	Glynn Johnson
IV	Ives
LC	LCN Closers
LO	Schlage Electronics
MSED	MS Sedco
NA	National Guard
SC	Schlage
VO	Von Duprin

Option List

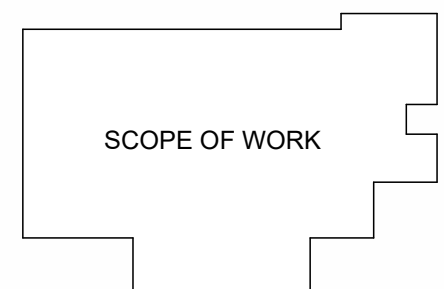
Code	Description
900-2RS	2 Relay Board Output
900-2RS	2 Relay Boards for Von Duprin EL
99-ALK-RX	ALARM KIT
B-CS	4 BEVELED EDGES -COUNTERSUNK HOLES (STD)
CD	CYLINDER DOGGING
EPT	Electric Power Transfer Prep
NRP	NRP (Steel&SS HNG - 4-1/2 x 4-1/2 only)
S3	ANSI Strike Package
SD-QEL	Center Case Dogging (for QEL Option)

Finish List

Code	Description
626	Satin Chromium Plated
628	Satin Aluminum, Clear Anodized
630	Satin Stainless Steel
652	Satin Chromium Plated
AL	Aluminum
AL	Aluminum (BHMA 689)
DU	Duro Coated
SP28	Lacquer Sprayed Aluminum
US26D	Chromium Plated, Dull
US32D	Stainless Steel, Dull
US32D316	Satin Stainless 316 Steel



Key Plan:



N

ALL IDEAS, DESIGN, ARRANGEMENTS AND PLANS INDICATED BY THIS DRAWING ARE OWNED BY AND THE PROPERTY OF MKM ARCHITECTURE + DESIGN AND WERE CREATED AND DEVELOPED FOR USE ON AND IN CONNECTION WITH THIS SPECIFIC PROJECT. NONE OF THE IDEAS, DESIGN, ARRANGEMENTS OR PLANS SHALL BE USED BY OR DISCLOSED TO ANY PERSON FOR ANY CONSTRUCTION FOR ANY PURPOSE WHATSOEVER WITHOUT THE WRITTEN PERMISSION OF MKM ARCHITECTURE + DESIGN. THE OWNER SHALL BE RESPONSIBLE TO RETAIN COPIES FOR INFORMATION AND REFERENCE IN CONNECTION WITH THIS PROJECT. WRITTEN DIMENSIONS ON THESE DRAWINGS SHALL HAVE PRECEDENCE OVER SCALE. DIMENSIONS CONTRACTORS SHALL VERIFY AND BE RESPONSIBLE FOR. ANY VARIATION FROM THE DIMENSIONS AND CONDITIONS SHOWN BY THESE DRAWINGS, SHOP DRAWINGS MUST BE SUBMITTED TO THIS OFFICE FOR REVIEW BEFORE PROCEEDING WITH FABRICATION AND/OR INSTALLATION. THE WORK SHOWN ON THIS DOCUMENT AND THE CORRESPONDING SPECIFICATIONS, INTERFACES WITH WORK SHOWN ON OTHER DOCUMENTS INCLUDING WORK TO BE PERFORMED BY OTHER CONTRACTORS OR SUBCONTRACTORS. EACH CONTRACTOR OR SUBCONTRACTOR SHALL BE FAMILIAR WITH THE WORK OF OTHER CONTRACTORS OR SUBCONTRACTORS, WHETHER OR NOT SHOWN ON THIS DOCUMENT, WHICH AFFECTS THE WORK SHOWN HEREIN AND SHALL COORDINATE SUCH WORK SO AS TO BE IN COMPLIANCE WITH THE INTENT OF ALL THE PROJECT DOCUMENTS.

Public Library
ST. JOE COUNTY

SJCPL - LASALLE
BRANCH

RENOVATION & ADDITION
3232 ARDMORE TRAIL,
SOUTH BEND, IN 46628

REVISION		
No.	Date	Revision
1	4/10/2025	Addendum 1
3	4/21/2025	Addendum 3

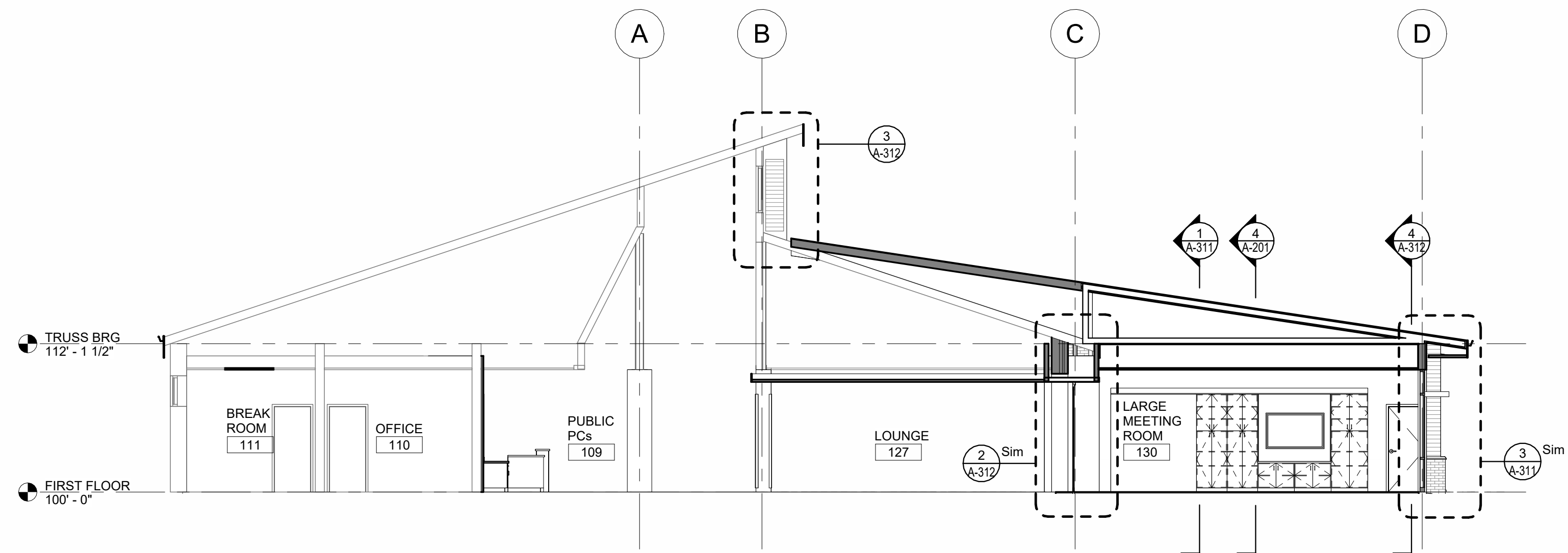
DRAWING CONTENTS:
BUILDING ELEVATIONS
& SECTIONS

ISSUE DATE:
03.27.2025
PROJECT NO.
25004
DRAWING NO.

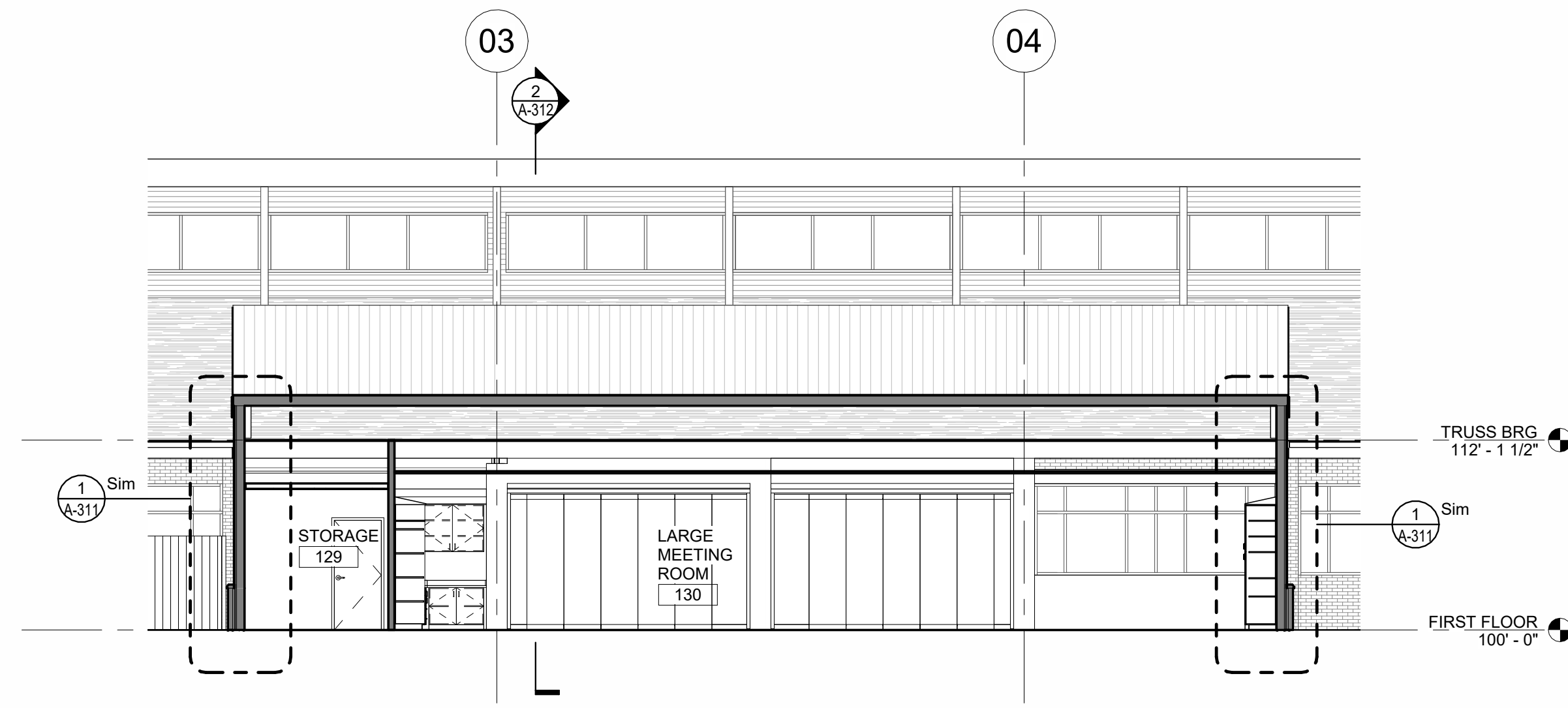
A-201

BUILDING ELEVATION NOTES

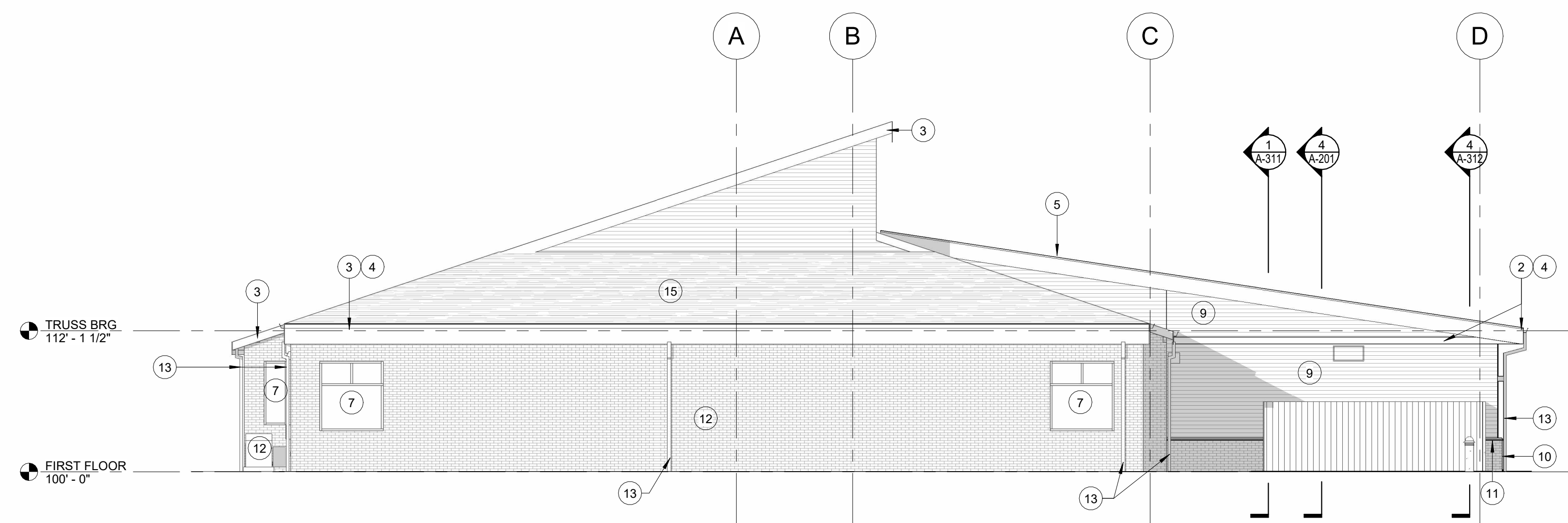
- 4/21/2025
MODIFIED
NOTE #1
- 4/21/2025
MODIFIED
NOTE #8
- EXISTING WINGWALLS TO REMAIN. REPAINT SIDING ON EACH SIDE OF ALL WINGWALLS. COORDINATE WITH CONTRACTOR ON NEW ROOF LOCATION.
 - NEW FASCIA.
 - EXISTING FASCIA - REFINISH.
 - NEW GUTTER.
 - NEW METAL ROOF.
 - NEW STOREFRONT WINDOW SYSTEM.
 - EXISTING WINDOW/GLAZING TO REMAIN.
 - NEW FIBER CEMENT SIDING AND TRIM AT EXTERIOR COLUMN ENCLOSURE.
 - NEW FIBER CEMENT SIDING.
 - NEW BRICK VENEER.
 - NEW PRE-CAST WATER TABLE.
 - EXISTING BRICK VENEER.
 - NEW DOWNSPOUT.
 - NEW ASPHALT SHINGLE ROOF.



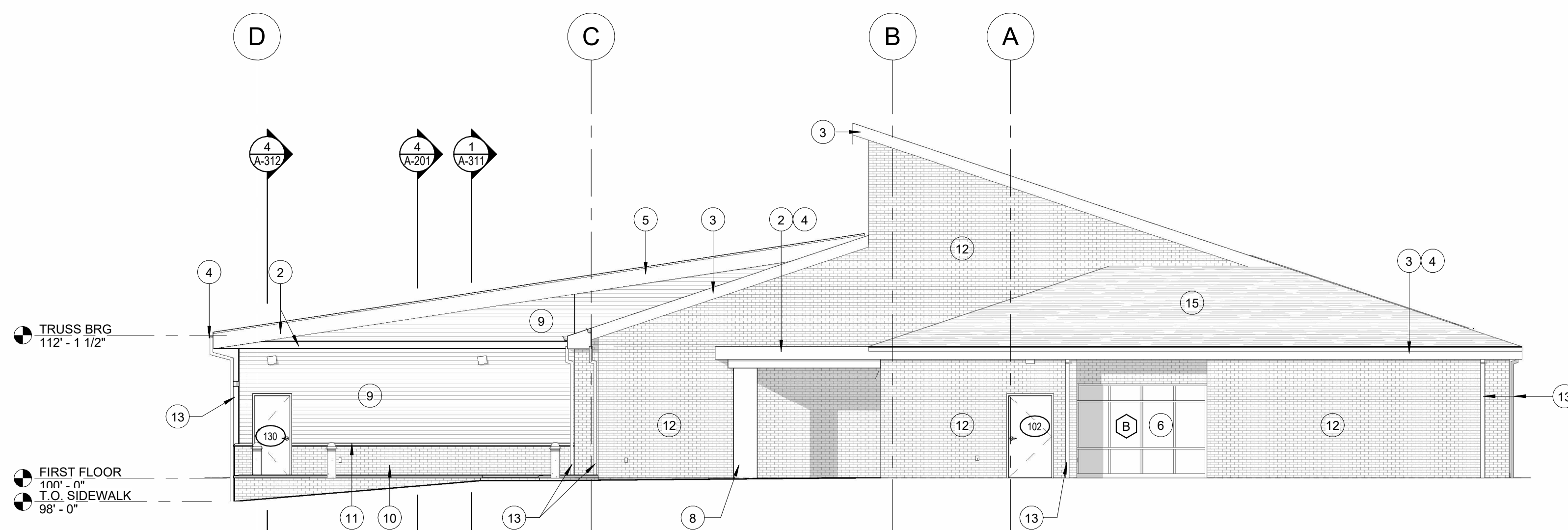
5 N-S BUILDING SECTION
1/8" = 1'-0"



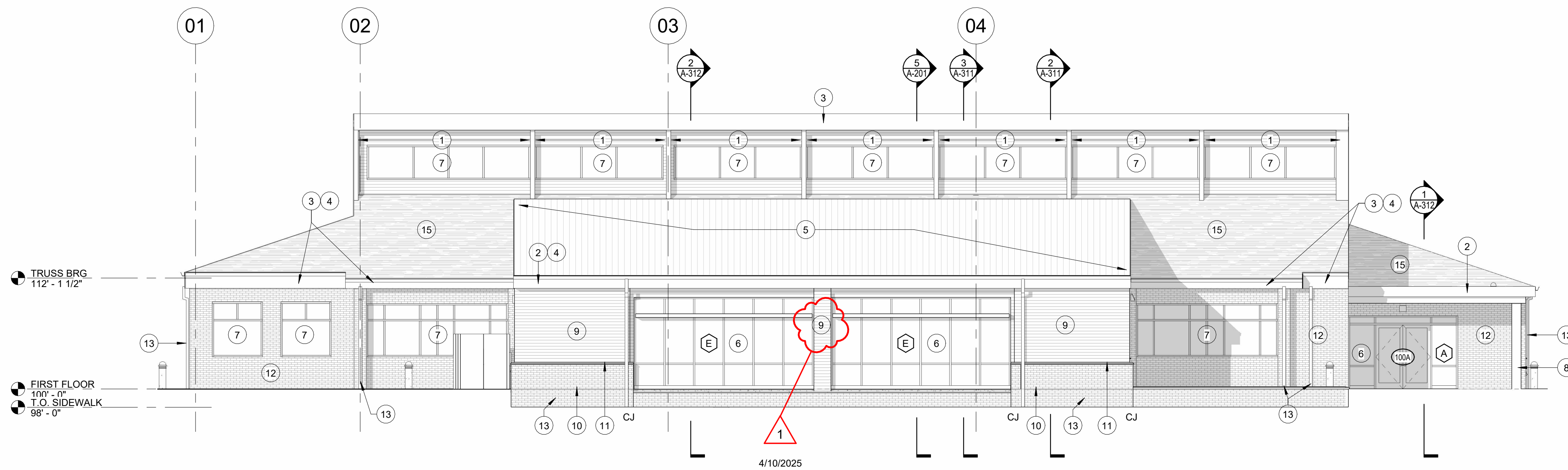
4 E-W BUILDING SECTION
1/8" = 1'-0"



3 WEST ELEVATION - NEW
1/8" = 1'-0"



2 EAST ELEVATION - NEW
1/8" = 1'-0"



1 SOUTH ELEVATION - NEW
1/8" = 1'-0"