



**MSKTD  
& ASSOCIATES**

**ARCHITECTURE ENGINEERING INTERIOR DESIGN**

**1715 MAGNAVOX WAY, FORT WAYNE, INDIANA 46804 PH. 260-432-9337**

**930 NORTH MERIDIAN, INDIANAPOLIS, INDIANA 46204 PH. 317-917-1190 MSKTD.COM**

---

---

**ADDENDUM NO. 2**

---

---

**KENDALLVILLE PUBLIC LIBRARY RENOVATION  
MAIN AND LIMBERLOST BRANCHES  
MSKTD Project No.: 8045  
May 9, 2025**

This addendum is issued as a supplement to the plans and specifications and shall be considered an integral part of the same.

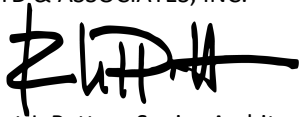
<u>ITEM</u>	<u>LOCATION</u>	<u>DESCRIPTION</u>
2.1	Specification Section 122413	Revise Section 122413 – Roller Window Shades; 1.2 Action Submittals; B. Shop Drawings; Omit 1 Motor-Operated Shades.
2.2	Drawings Sheet CL401	1. Detail 1 - 6" Bollard - Bollard tops shall have a hand rubbed domed concrete finish to match existing on-site bollards, in lieu of the metal cap as shown on the bollard detail. Bollards shall be painted entirely yellow to match existing.
2.3	Drawings Sheet AK901a	Refer to attached, revised sheet AK901a for the following clarifications/revisions: 1. KPL - First Floor Reflected Ceiling Plan Unit A. Note RC9 has been added to the drawing: "NEW LINEAR LIGHT FIXTURES TO BE INSTALLED IN EXISTING SUSPENDED ACOUSTIC CEILING SYSTEM. G.C. TO MODIFY THE EXISTING GRID AND CUT TILES AS REQUIRED TO ACCOMMODATE NEW LIGHT FIXTURES. SEE ELECTRICAL LIGHTING PLANS FOR MORE INFORMATION ON FIXTURE TYPE(S). NEW LIGHT FIXTURES ARE TO RUN PARALLEL WITH EXISTING MAIN GRID TEES, TYPICAL."
2.4	Drawings Sheet AK901b	Refer to attached, revised sheet AK901b for the following clarifications/revisions: 1. KPL - First Floor Reflected Ceiling Plan Unit B. Note RC9 has been added to the drawing: "NEW LINEAR LIGHT FIXTURES TO BE INSTALLED IN EXISTING SUSPENDED ACOUSTIC CEILING SYSTEM. G.C. TO MODIFY THE EXISTING GRID AND CUT TILES AS REQUIRED TO ACCOMMODATE NEW LIGHT FIXTURES. SEE ELECTRICAL LIGHTING PLANS FOR MORE INFORMATION ON FIXTURE TYPE(S). NEW LIGHT FIXTURES ARE TO RUN PARALLEL WITH EXISTING MAIN GRID TEES, TYPICAL."
2.5	Drawings Sheet E600	Refer to attached, revised sheet E600m for the following clarifications/revisions: 1. Luminaire Schedule: Add fixture types L29, L30, L31 and L32. 2. Luminaire Schedule: Add equals to light fixture types L15, L27, and L28. 3. Luminaire Schedule: Change L15 fixture to black for color of track and heads. 4. Luminaire Schedule: Revise light fixture type L17 to add Basis of Design part number.

<u>ITEM</u>	<u>LOCATION</u>	<u>DESCRIPTION</u>
		<ol style="list-style-type: none"> <li>5. Luminaire Schedule: Revise fixture type L26 to add Basis of Design.</li> <li>6. Exit/Emergency Luminaire Schedule: Add fixture EM1.</li> </ol>
2.6	Drawings Sheet EK101b	<p>Refer to attached, revised sheet EK101b for the following clarifications/revisions:</p> <ol style="list-style-type: none"> <li>1. In Adult Stacks near Offices K170, show 1 EM light to be demo and add Demolition Plan note D48.</li> </ol>
2.7	Drawings Sheet EK200	<p>Refer to attached, revised sheet EK200 for the following clarifications/revisions:</p> <ol style="list-style-type: none"> <li>1. In Kitchen K007, show added plan note P34. Add Power Plan note P34 to sheet.</li> </ol>
2.8	Drawings Sheet EK201a	<p>Refer to attached, revised sheet EK201a for the following clarifications/revisions:</p> <ol style="list-style-type: none"> <li>1. In Teen stacks K127, show circuits for outlets on east wall.</li> <li>2. In Collab K132 and Sensory room K131, show circuits for outlets.</li> <li>3. Added plan note P34 to sheet.</li> </ol>
2.9	Drawings Sheet EK201b	<p>Refer to attached, revised sheet EK201b for the following clarifications/revisions:</p> <ol style="list-style-type: none"> <li>1. In Board Room K170, add floor box power circuit and data.</li> <li>2. Revise Power plan note P10.</li> <li>3. In Library of Things K181, show circuit and add Power plan notes P30 and P34 on receptacles.</li> <li>4. In Office K142, Restroom K143, Workroom K139, Bookkeeper K141 and Adult Stacks, show circuits and add Power plan notes P34 on receptacles. Add Power plan note P13 for EF-01.</li> <li>5. In Meeting Room K149, Collab K151, Study K153, Collab K154 and Restroom K166, show circuits and add Power plan notes P34 on receptacles.</li> </ol>
2.10	Drawings Sheet EK301a	<p>Refer to attached, revised sheet EK301a for the following clarifications/revisions:</p> <ol style="list-style-type: none"> <li>1. In Entry Lobby K101, add (1) L13 light fixture and show (2) L13 lights changed to L30 lights.</li> <li>2. In Women's RR and Men's RR, added lighting plan note L24.</li> <li>3. Added plan notes L19 &amp; L20 to sheet and in corridor K121 and K130.</li> <li>4. Added Plan notes L11 and L24 to sheet.</li> <li>5. In Children's Reading K118, revised to show the L16 lights are continuous rows of individual fixtures.</li> <li>6. In Collab K132 and sensory room K131, add plan notes L11.</li> <li>7. In Teen Stacks outside Sensory room K131 add Lighting plan note L23 and fixture tag for EM1.</li> <li>8. In Workroom K139 add EM1 light and Lighting plan note L23.</li> </ol>
2.11	Drawings Sheet EK301b	<p>Refer to attached, revised sheet EK301b for the following clarifications/revisions:</p> <ol style="list-style-type: none"> <li>1. In Workroom K139, Restroom K143 and Adult Stacks K145 show EM1 lights and added Lighting plan note L23.</li> <li>2. In Genealogy K148, add Lighting Plan Note L1 on light fixtures.</li> <li>3. In Library of things K181, add EM1 and new light switch.</li> <li>4. In Restroom K166 add Lighting plan notes L9 and L11.</li> <li>5. In Corridor K172, add Lighting plan note L11 on new light switch.</li> </ol>

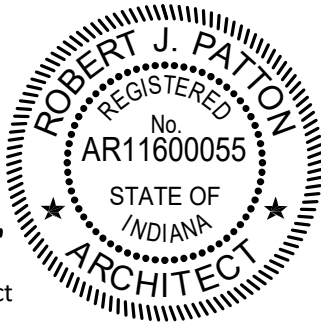
<u>ITEM</u>	<u>LOCATION</u>	<u>DESCRIPTION</u>
2.12	Drawings Sheet EL200	Refer to attached, revised sheet EL200 for the following clarifications/revisions: <ol style="list-style-type: none"> <li>1. Revise lights and L01 tags in DVD/Games L108.</li> <li>2. Add (1) L29 light fixture and (1) switch on west wall outside of Mtg Room "B". Add Lighting Plan note L21.</li> <li>3. Add (4) L31 lights under wall cabinets in Office L120. Add Lighting plan note L3.</li> <li>4. Add (2) L31 lights under wall cabinets in Circ Desk L107. Add Lighting Plan note L3.</li> <li>5. Added (1) L32 light in glass display at circ Desk L107. Add Lighting Plan note L22.</li> </ol>

Respectfully submitted,

MSKTD & ASSOCIATES, INC.



Robert J. Patton, Senior Architect

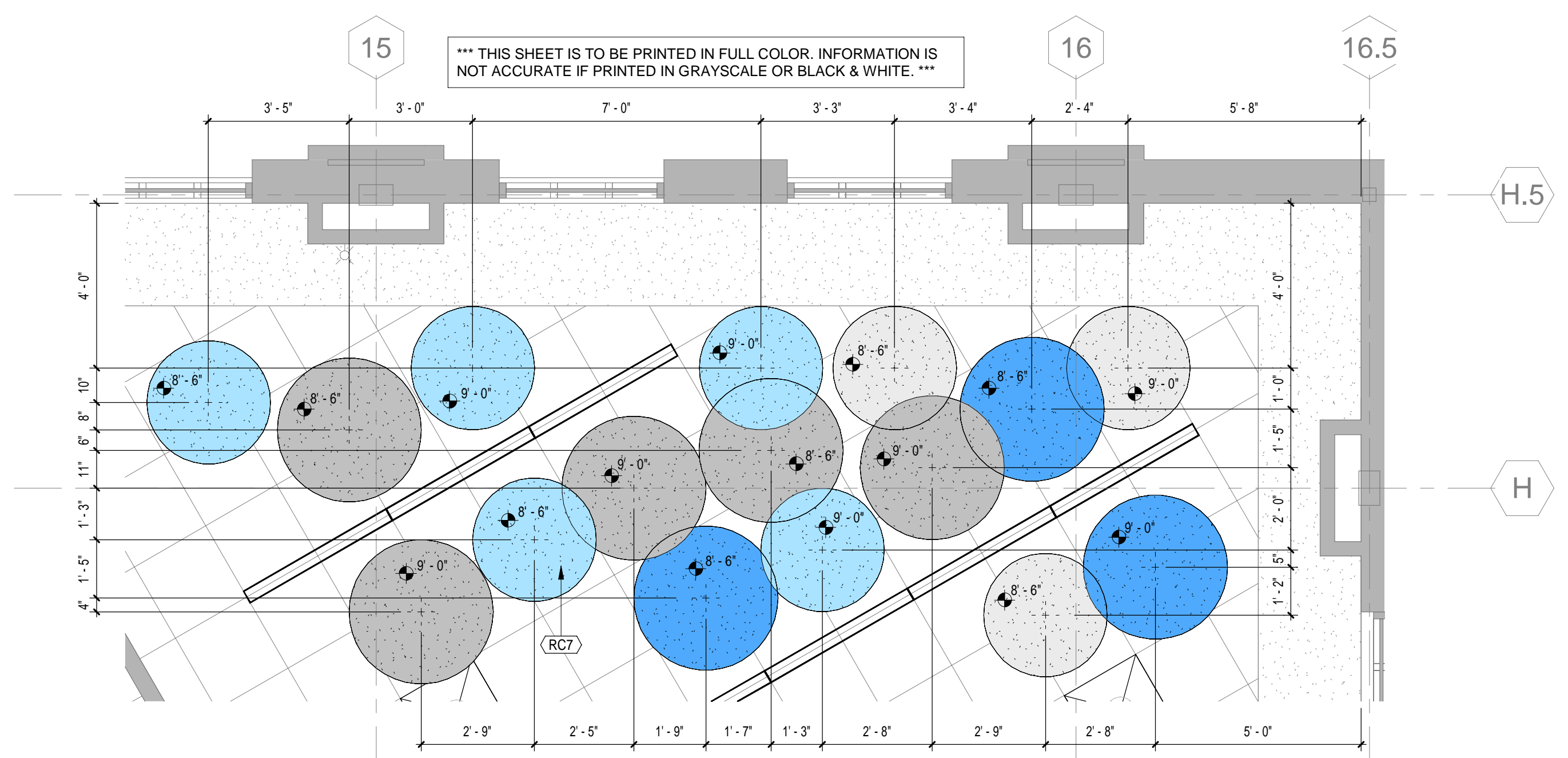


RJP/lw/mb

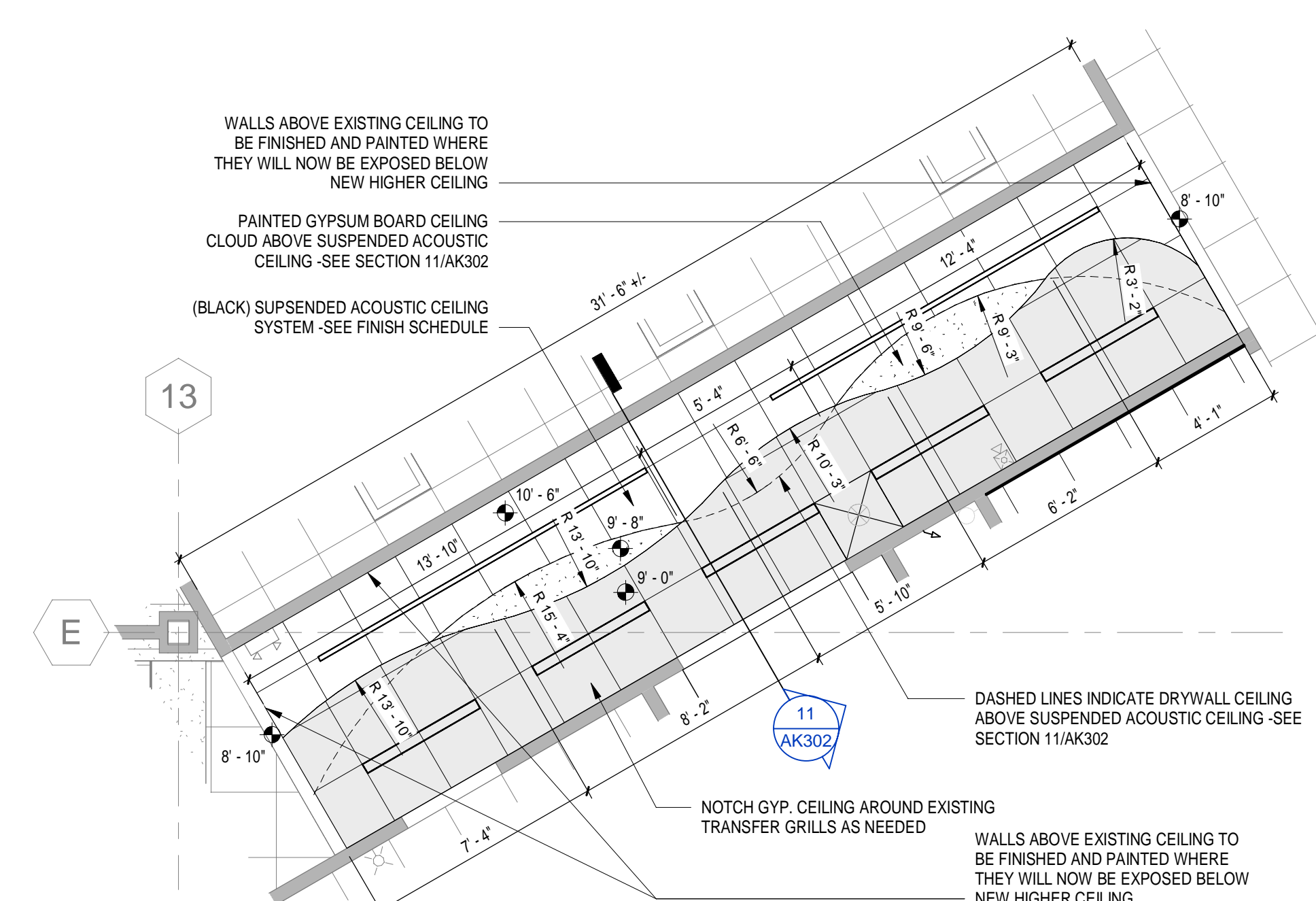
Attachments:

Sheets CL401, AK901A, AK901b, E600, EK101b, EK200, EK201a, EK201b, EK301a, EK301b and EL200

cc: All Plan Holders  
Mindy London (mlondon@kendallvillelibrary.org)  
Mark Thaler (mthaler@kendallvillelibrary.org)  
RJP/KC/ALK/CAB/KCS/ANS/JSH/CJB/PJB  
File



**3 Enlarged RCP - Children's Area**  
3/8" = 1'-0"



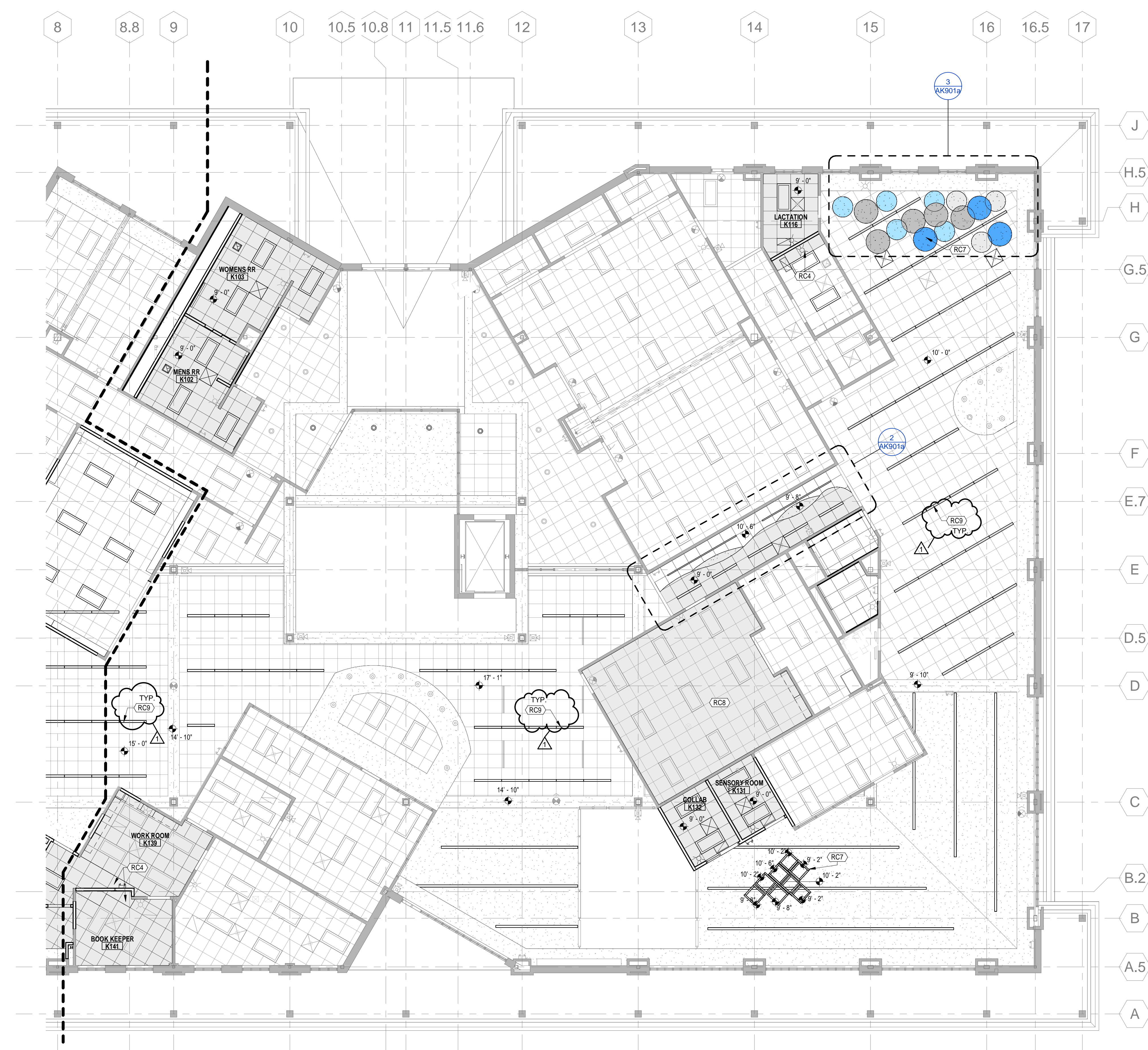
**2 Enlarged RCP - Children's Hallway**  
1/4" = 1'-0"

**General Ceiling Plan Notes**

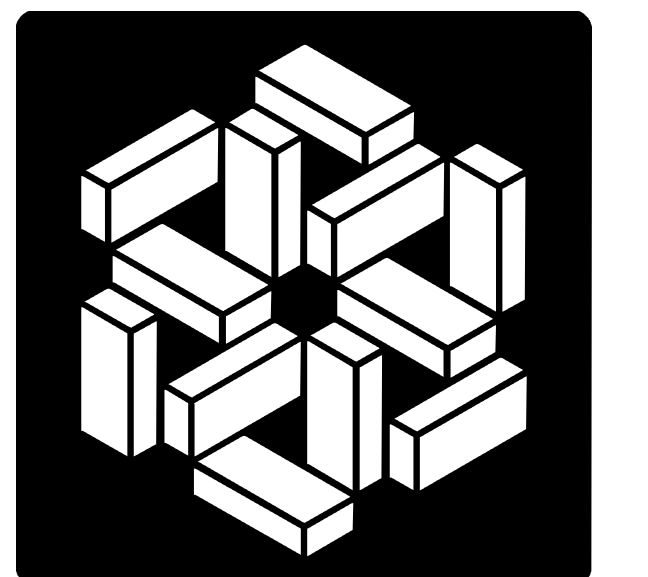
- THESE NOTES APPLY TO ALL CONSTRUCTION DRAWINGS AND TO ALL CONTRACTORS AND/OR SUBCONTRACTORS THAT WORK WITHIN THIS BUILDING.
- ALIGN ALL CEILING AND BULKHEAD REVEALS, CONTROL OR SEISMIC JOINTS WITH THE ADJACENT REVEAL, CONTROL OR SEISMIC JOINTS IN WALLS INDICATED ON ELEVATIONS.
  - ALL CEILING AND BULKHEAD HEIGHTS INDICATED ARE TO FINISHED FACE OF GYPSUM BOARD OR TO THE BOTTOM FACE OF ACOUSTICAL CEILING TILE PAD, UNLESS NOTED OTHERWISE.
  - CEILING CONTRACTOR TO PROVIDE ALL CEILING GRID TO SUPPORT HVAC SUPPLY DIFFUSERS AND RETURN GRILLS.
  - DEVICES OTHER THAN LIGHTING AND DIFFUSERS ARE SHOWN IN APPROXIMATE LOCATIONS. FINAL LOCATION TO BE COORDINATED WITH ALL TRADES AND ARCHITECT.
  - AT LOCATIONS WHERE GYPSUM BOARD CEILINGS ARE INDICATED, THE CONTRACTOR HAS THE OPTION TO USE LIGHT GAGE METAL FRAMING OR SUSPENDED GYPSUM BOARD GRID UNLESS OTHERWISE DETAILED. THE CONTRACTOR WILL COORDINATE ANY MODIFICATIONS WITH THE OTHER TRADES ON THE PROJECT. THE CEILING CONTRACTOR'S FINAL MEANS AND METHODS WILL NOT CONFLICT WITH THE WORK OF OTHERS OR THE INTENT OF THESE DOCUMENTS.
  - WHERE EXISTING SUSPENDED ACOUSTICAL CEILINGS ARE SCHEDULED TO REMAIN, CUT AND PREP THE CEILING GRID IN PREPARATION FOR REPAIRS. SALVAGE ENOUGH CEILING PADS FOR RECONSTRUCTION. STORE AND PROTECT ALL MATERIALS. USE NEW MATCHING MATERIALS FOR RECONSTRUCTION AS REQUIRED.
  - SEE THE ROOM FINISH SCHEDULE FOR ADDITIONAL COMMENTS REGARDING MATERIALS AND FINISHES.
  - THE DESIGNATION 'CJ' INDICATES GYPSUM BOARD CONTROL JOINTS. WHERE INDICATED PROVIDE USG #093 ZINC CONTROL TYPICAL. INSTALL JOINT THROUGH THE FULL EXTENTS OF ANY GYPSUM CEILING OR BULKHEAD. WHERE THE GYPSUM CEILING COMPONENT MEETS A GYPSUM WALL, EXTEND THE CONTROL JOINT DOWN TO THE FLOOR TYPICAL.
  - THE GENERAL CONTRACTOR WILL PROVIDE AND INSTALL ALL SUPPLEMENTAL AND/OR MISCELLANEOUS STEEL FRAMING AS REQUIRED BY THEMSELVES OR BY THEIR SUBCONTRACTORS FOR THE INSTALLATION OF THE EQUIPMENT SCHEDULED AND SPECIFIED. NOT ALL OF THE REQUIRED SUPPORT STEEL MAY BE DETAILED OR CALLED OUT FOR IN THESE DOCUMENTS. COORDINATE ALL REQUIREMENTS WITH THE SPECIFICATIONS, EQUIPMENT SUPPLIERS AND SUBCONTRACTORS. THERE WILL BE NO CHANGE ORDERS TO THE PROJECT FOR SUPPLEMENTAL STEEL WHERE OMISSIONS MAY OCCUR IN THE BIDDING DOCUMENTS.

**Specific Reflected Ceiling Plan Notes**

- RC4 PORTION OF EXISTING CEILING WILL NEED TO BE REMOVED AND REINSTALLED AS REQUIRED AFTER NEW WALL/BULKHEAD HAS BEEN INSTALLED.
- RC7 SUSPENDED SOUND ABSORBING CEILING CLOUDS/RAFFLE. SEE FINISH SCHEDULE.
- RC8 CEILING TILES TO BE REMOVED AND REPLACED WITH NEW TILES IN THIS ROOM. EXISTING CEILING GRID TO REMAIN. SEE FINISH SCHEDULE.
- RC9 NEW LINEAR LIGHT FIXTURES TO BE INSTALLED IN EXISTING SUSPENDED ACOUSTIC CEILING SYSTEM. G.C. TO MODIFY THE EXISTING GRID AND CUT TILES AS REQUIRED TO ACCOMMODATE NEW LIGHT FIXTURES. SEE ELECTRICAL LIGHTING PLANS FOR MORE INFORMATION ON FIXTURE TYPE(S). NEW LIGHT FIXTURES ARE TO RUN PARALLEL WITH EXISTING MAIN GRID TEES. TYPICAL.

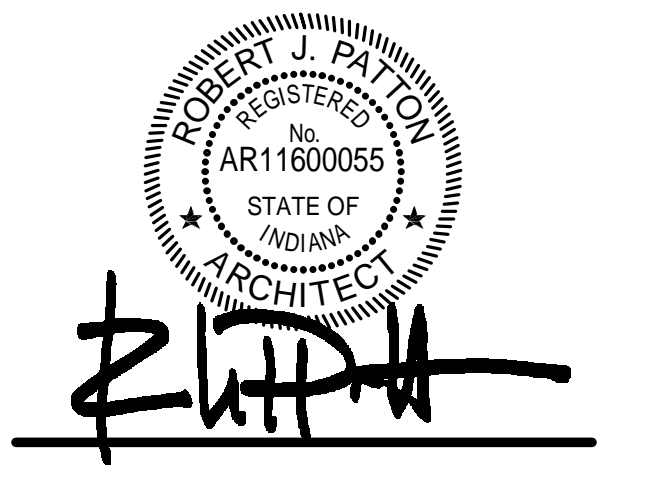


**First Floor Reflected Ceiling Plan Unit "A"**  
1/8" = 1'-0"



**MSKTD & Associates**  
Architecture | Engineering | Interior Design

1715 Magnavox Way Fort Wayne, IN 46804 260.432.8337  
930 North Meridian Indianapolis, IN 46204 317.917.1190  
www.msktd.com



A Project for:  
**Kendallville Public Library**  
221 S Park Avenue  
Kendallville, Indiana 46755

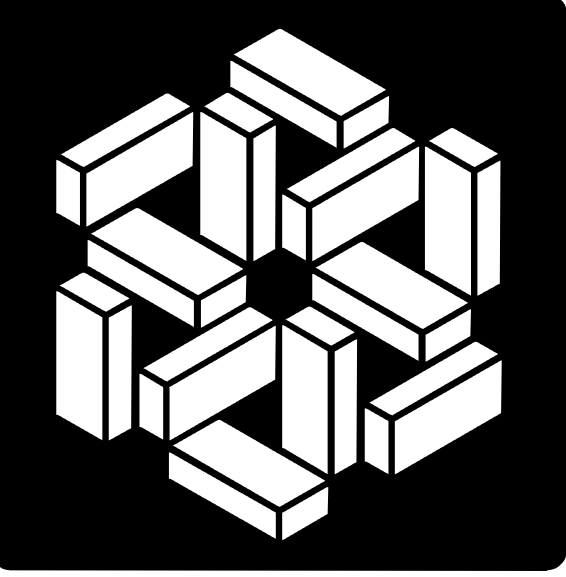
PROJECT NO. 8045	DATE 04-22-2025
REV. 1 Addendum 02	DATE 05-09-2025

SET DESCRIPTION  
**BID SET**

SHEET TITLE  
KPL - First Floor  
Reflected Ceiling Plan  
Unit "A"

SHEET NUMBER

**AK901a**



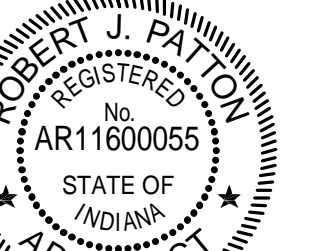
**MSKTD & Associates**

Architecture | Engineering | Interior Design

1715 Magnavox Way Fort Wayne, IN 46804 260.432.8337

930 North Meridian Indianapolis, IN 46204 317.917.1190

www.msktd.com

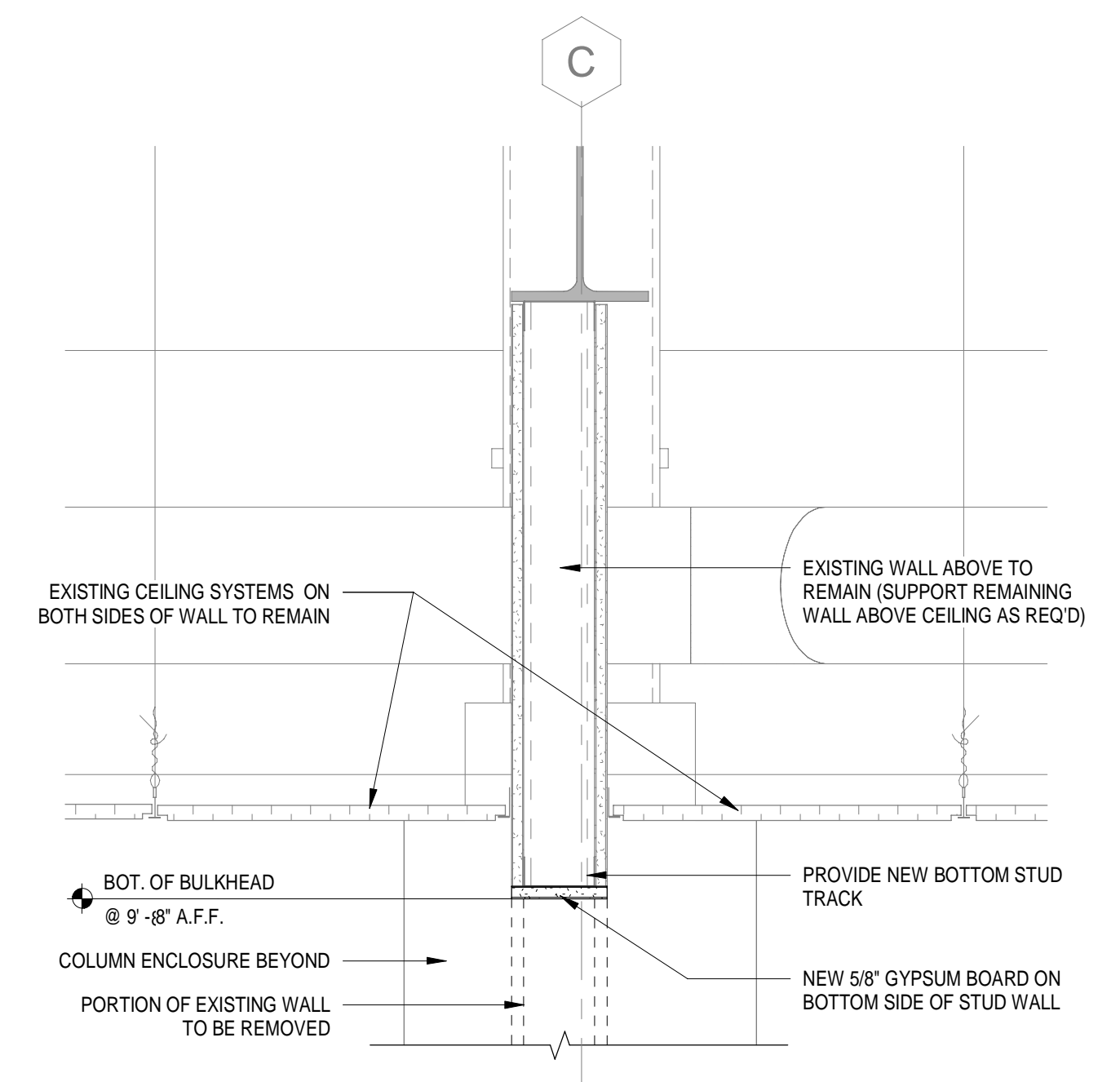


*[Signature]*

### General Ceiling Plan Notes

THESE NOTES APPLY TO ALL CONSTRUCTION DRAWINGS AND TO ALL CONTRACTORS AND/OR SUBCONTRACTORS THAT WORK WITHIN THIS BUILDING.

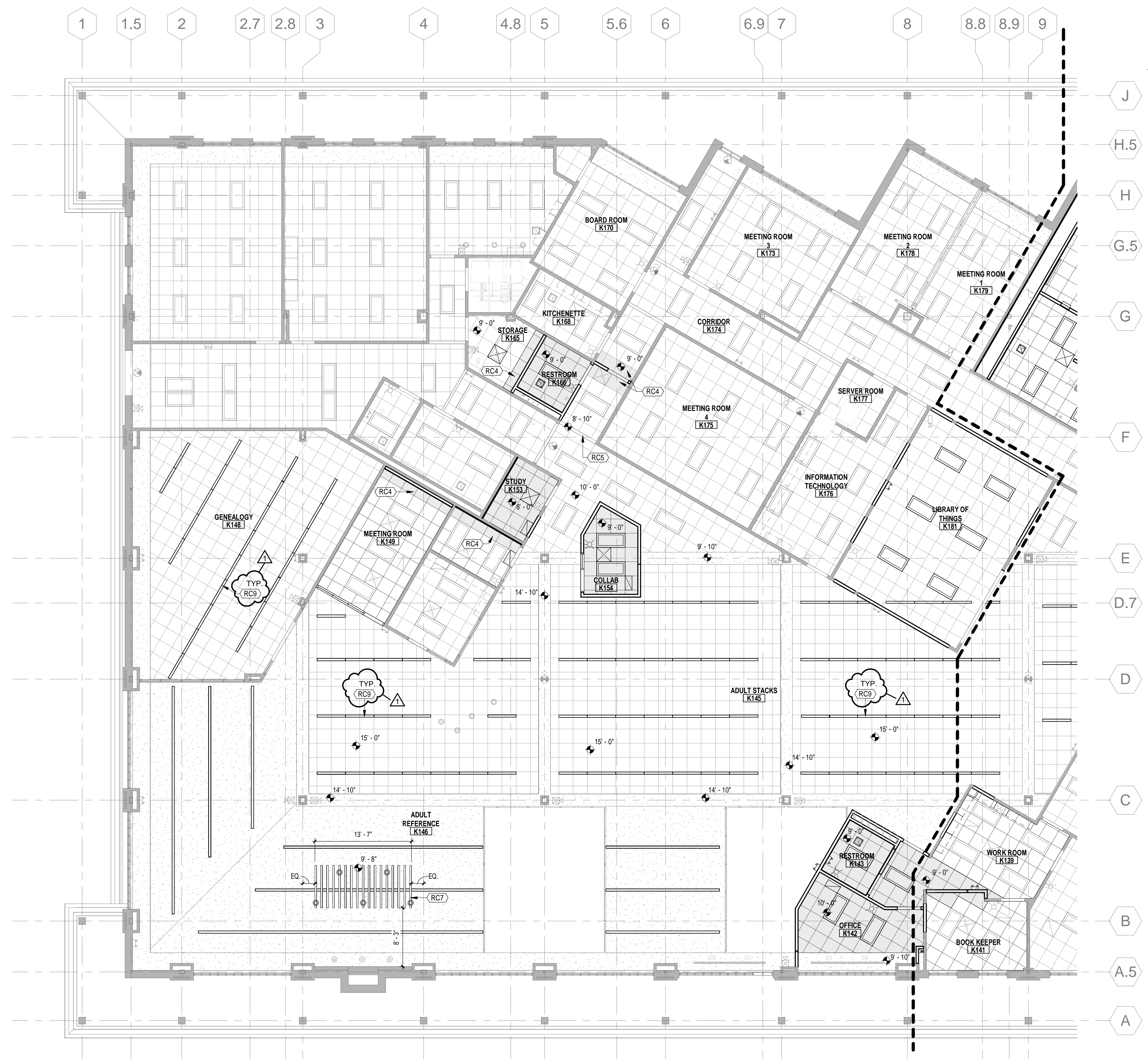
- ALIGN ALL CEILING AND BULKHEAD REVEALS, CONTROL OR SEISMIC JOINTS WITH THE ADJACENT REVEAL, CONTROL OR SEISMIC JOINTS IN WALLS INDICATED ON ELEVATIONS.
- ALL CEILING AND BULKHEAD HEIGHTS INDICATED ARE TO FINISHED FACE OF GYPSUM BOARD OR TO THE BOTTOM FACE OF ACOUSTICAL CEILING TILE PAD, UNLESS NOTED OTHERWISE.
- CEILING CONTRACTOR TO PROVIDE ALL CEILING GRID TO SUPPORT HVAC SUPPLY DIFFUSERS AND RETURN GRILLS.
- DEVICES OTHER THAN LIGHTING AND DIFFUSERS ARE SHOWN IN APPROXIMATE LOCATIONS. FINAL LOCATION TO BE COORDINATED WITH ALL TRADES AND ARCHITECT.
- AT LOCATIONS WHERE GYPSUM BOARD CEILINGS ARE INDICATED, THE CONTRACTOR HAS THE OPTION TO USE LIGHT GAGE METAL FRAMING OR SUSPENDED GYPSUM BOARD GRID UNLESS OTHERWISE DETAILED. THE CONTRACTOR WILL COORDINATE ANY MODIFICATIONS WITH THE OTHER TRADES ON THE PROJECT. THE CEILING CONTRACTOR'S FINAL MEANS AND METHODS WILL NOT CONFLICT WITH THE WORK OF OTHERS OR THE INTENT OF THESE DOCUMENTS.
- WHERE EXISTING SUSPENDED ACOUSTICAL CEILINGS ARE SCHEDULED TO REMAIN, CUT AND PREP THE CEILING GRID IN PREPARATION FOR REPAIRS. SALVAGE ENOUGH CEILING PADS FOR RECONSTRUCTION. STORE AND PROTECT ALL MATERIALS. USE NEW MATCHING MATERIALS FOR RECONSTRUCTION AS REQUIRED.
- SEE THE ROOM FINISH SCHEDULE FOR ADDITIONAL COMMENTS REGARDING MATERIALS AND FINISHES.
- THE DESIGNATION 'CJ' INDICATES GYPSUM BOARD CONTROL JOINTS. WHERE INDICATED PROVIDE USG #093 ZINC CONTROL TYPICAL. INSTALL JOINT THROUGH THE FULL EXTENTS OF ANY GYPSUM CEILING OR BULKHEAD. WHERE THE GYPSUM CEILING COMPONENT MEETS A GYPSUM WALL, EXTEND THE CONTROL JOINT DOWN TO THE FLOOR TYPICAL.
- THE GENERAL CONTRACTOR WILL PROVIDE AND INSTALL ALL SUPPLEMENTAL AND/OR MISCELLANEOUS STEEL FRAMING AS REQUIRED BY THEMSELVES OR BY THEIR SUBCONTRACTORS FOR THE INSTALLATION OF THE EQUIPMENT SCHEDULED AND SPECIFIED. NOT ALL OF THE REQUIRED SUPPORT STEEL MAY BE DETAILED OR CALLED OUT FOR IN THESE DOCUMENTS. COORDINATE ALL REQUIREMENTS WITH THE SPECIFICATIONS, EQUIPMENT SUPPLIERS AND SUBCONTRACTORS. THERE WILL BE NO CHANGE ORDERS TO THE PROJECT FOR SUPPLEMENTAL STEEL WHERE OMISSIONS MAY OCCUR IN THE BIDDING DOCUMENTS.



**2 KPL - Bulkhead Detail in K020**  
1/2" = 1'-0"

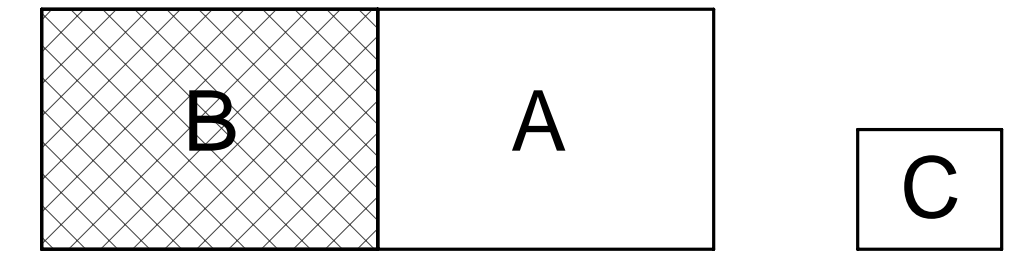
### Specific Reflected Ceiling Plan Notes

- RC4 PORTION OF EXISTING CEILING WILL NEED TO BE REMOVED AND REINSTALLED AS REQUIRED AFTER NEW WALL/BULKHEAD HAS BEEN INSTALLED.
- RC5 PORTION OF EXISTING WALL TO REMAIN ABOVE TO CREATE BULKHEAD BETWEEN TWO EXISTING CEILINGS. SEE SECTION 2/AK901b FOR SIMILAR DETAIL.
- RC7 SUSPENDED SOUND ABSORBING CEILING CLOUDS/BAFFLE. SEE FINISH SCHEDULE.
- RC9 NEW LINEAR LIGHT FIXTURES TO BE INSTALLED IN EXISTING SUSPENDED ACOUSTICAL CEILING SYSTEM. G.C. TO MODIFY THE EXISTING GRID AND CUT TILES AS REQUIRED TO ACCOMMODATE NEW LIGHT FIXTURES. SEE ELECTRICAL LIGHTING PLANS FOR MORE INFORMATION ON FIXTURE TYPE(S). NEW LIGHT FIXTURES ARE TO RUN PARALLEL WITH EXISTING MAIN GRID TEES. TYPICAL.



**KPL - First Floor Reflected Ceiling Plan Unit "B"**  
1/8" = 1'-0"

KEY PLAN



A Project for:  
**Kendallville Public Library**

221 S Park Avenue  
Kendallville, Indiana 46755

PROJECT NO. 8045	DATE 04-22-2025
REV. 1 Addendum 02	DATE 05-09-2025

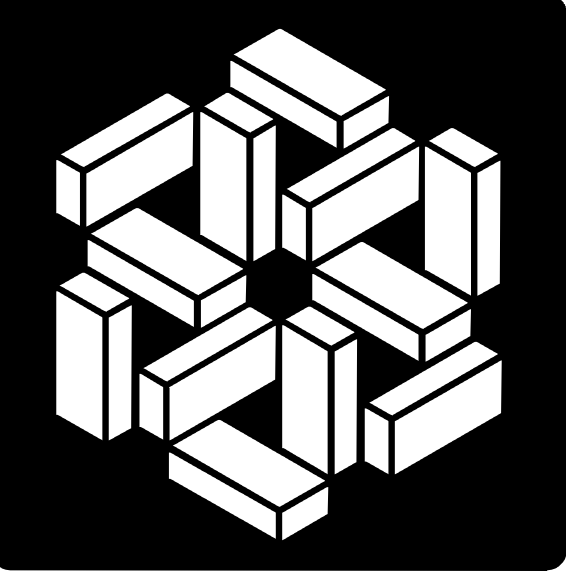
SET DESCRIPTION  
**BID SET**

SHEET TITLE  
**KPL - First Floor Reflected Ceiling Plan Unit "B"**

SHEET NUMBER

# AK901b





**MSKTD & Associates**

Architecture | Engineering | Interior Design

1715 Magnavox Way Fort Wayne, IN 46804 260-432-8337

930 North Meridian Indianapolis, IN 46204 317-917-1190

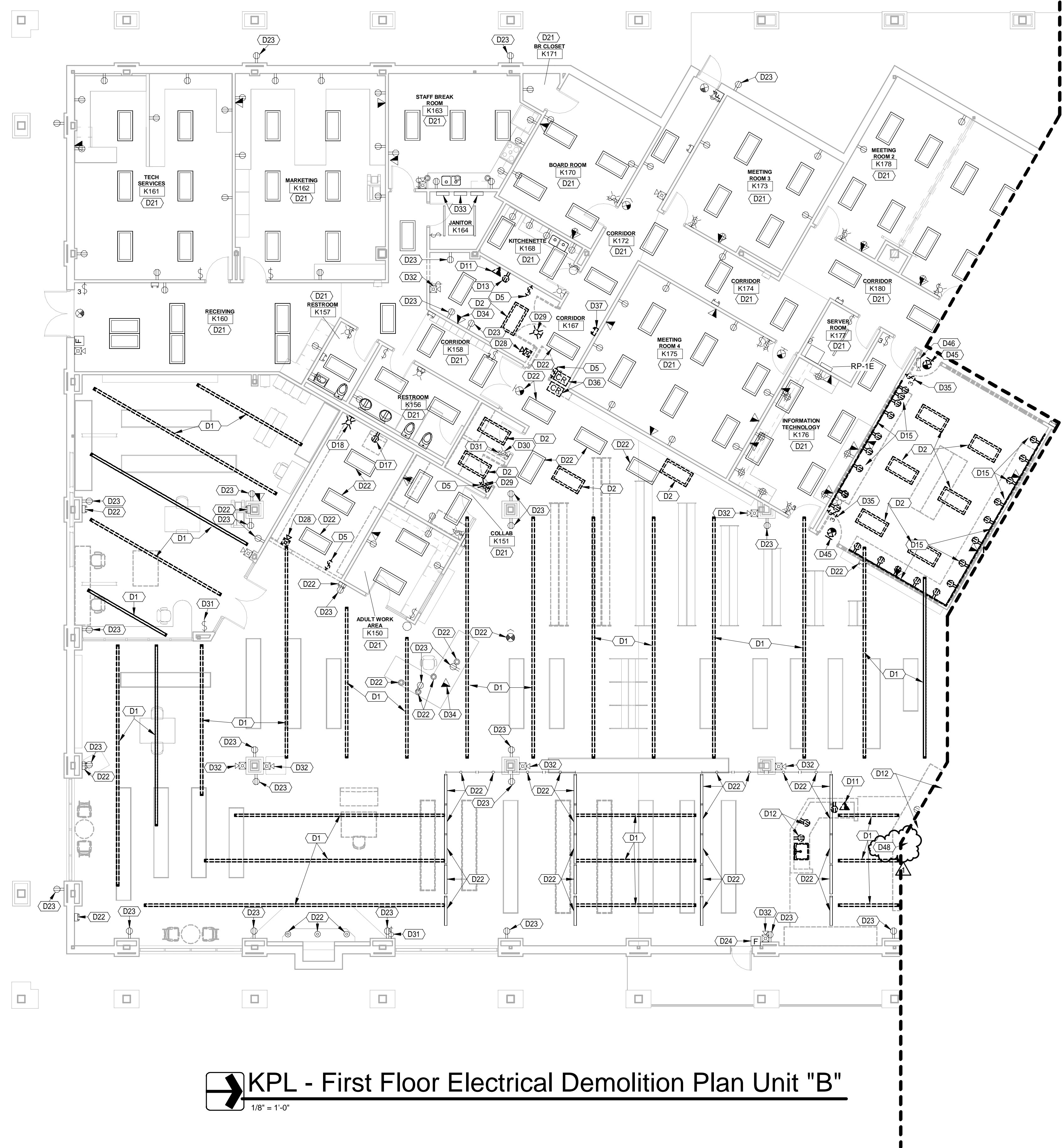
www.msktd.com



*K.G. Godwin*

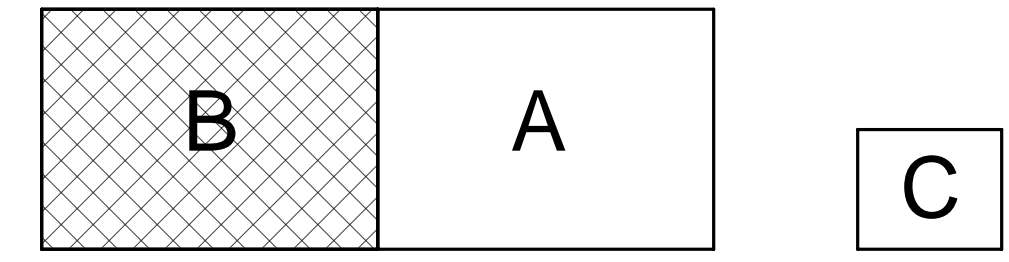
**Demolition Plan Notes**

- D1 DISCONNECT AND REMOVE EXISTING SUSPENDED LIGHT FIXTURE AND ASSOCIATED WIRING AND CONDUIT BACK TO JUNCTION BOX SOURCE IN ROOM. RETAIN EXISTING BRANCH CIRCUIT AS REQUIRED FOR CONNECTION TO NEW LIGHTING FIXTURES. FIELD VERIFY EXACT CIRCUIT AND LOCATION. (TYPICAL)
- D2 DISCONNECT AND REMOVE EXISTING LIGHT FIXTURE AND ASSOCIATED WIRING AND CONDUIT BACK TO JUNCTION BOX SOURCE IN ROOM. RETAIN EXISTING LIGHTING BRANCH CIRCUIT AS REQUIRED FOR CONNECTION TO NEW LIGHTING FIXTURES. FIELD VERIFY EXACT CIRCUIT AND LOCATION. (TYPICAL)
- D5 DISCONNECT AND REMOVE EXISTING LIGHT SWITCH AND ASSOCIATED WIRING AND CONDUIT.
- D11 DISCONNECT AND REMOVE EXISTING TELECOMMUNICATIONS OUTLET AND ASSOCIATED CABLING AND CONDUIT BACK TO TERMINATION AT EXISTING TELECOMMUNICATION RACK.
- D12 DISCONNECT AND REMOVE DUPLEX RECEPTACLE. EXISTING CIRCUIT SHALL BE REWORKED TO CONTINUE EXISTING CIRCUIT.
- D13 DISCONNECT AND REMOVE DUPLEX RECEPTACLE AND ASSOCIATED CONDUIT AND WIRING BACK TO EXISTING POWER PANEL.
- D15 DISCONNECT AND REMOVE RACEWAY, DEVICES AND ASSOCIATED WIRING AND CONDUIT BACK TO EXISTING POWER PANEL. REMOVE DATA CABLING IN ITS ENTIRETY BACK TO RACK.
- D17 DISCONNECT AND REMOVE DUPLEX RECEPTACLE AND BACKBOX TO BE EXTENDED TO NEW FURRED OUT WALL. EXISTING CIRCUIT SHALL BE REWORKED TO CONTINUE EXISTING CIRCUIT.
- D18 DISCONNECT AND REMOVE FIRE ALARM STROBE AND BACKBOX TO BE EXTENDED TO NEW FURRED OUT WALL. EXTEND FIRE ALARM CIRCUIT AS REQUIRED.
- D21 EXISTING LIGHTING FIXTURES, SWITCHES, WIRING DEVICES, FIRE ALARM DEVICES, T-COMM OUTLETS, ETC. IN THIS ROOM TO REMAIN UNLESS SPECIFICALLY NOTED OTHERWISE.
- D22 EXISTING LIGHT FIXTURE TO REMAIN. PROTECT DURING CONSTRUCTION.
- D23 EXISTING RECEPTACLE TO REMAIN. PROTECT DURING CONSTRUCTION.
- D24 EXISTING FIRE ALARM PULL STATION TO REMAIN. PROTECT DURING CONSTRUCTION.
- D28 DISCONNECT AND REMOVE EXISTING FIRE ALARM SIGNAL AND ASSOCIATED CABLING AND CONDUIT BACK TO NEAREST FIRE ALARM JUNCTION BOX SOURCE.
- D29 DISCONNECT AND REMOVE EXISTING FIRE ALARM STROBE AND ASSOCIATED CABLING AND CONDUIT BACK TO NEAREST FIRE ALARM JUNCTION BOX SOURCE.
- D30 EXISTING FIRE ALARM STROBE TO REMAIN. PROTECT DURING CONSTRUCTION.
- D31 EXISTING LIGHT SWITCH TO REMAIN. PROTECT DURING CONSTRUCTION.
- D32 EXISTING FIRE ALARM SIGNAL TO REMAIN. PROTECT DURING CONSTRUCTION.
- D33 EXISTING ELECTRICAL PANEL TO REMAIN. PROTECT DURING CONSTRUCTION.
- D34 EXISTING TELECOMMUNICATIONS OUTLET TO REMAIN. PROTECT DURING CONSTRUCTION.
- D35 DISCONNECT AND REMOVE EXISTING LIGHT SWITCH AND ASSOCIATED WIRING AND CONDUIT. ABANDON EXISTING CONDUIT IN PLACE WHERE CONCEALED IN EXISTING WALL TO REMAIN.
- D36 DISCONNECT AND REMOVE EXISTING CARD READER AND ASSOCIATED WIRING AND CONDUIT BACK TO EXISTING DOOR CONTROL PANEL. RETAIN EXISTING CARD READER AS REQUIRED FOR INSTALLATION IN NEW LOCATION. SEE PLAN T14 ON SHEET EK401d FOR ADDITIONAL INFORMATION.
- D37 DISCONNECT AND REMOVE EXISTING EMERGENCY LIGHT.
- D45 DISCONNECT AND REMOVE EXIT SIGN AND ASSOCIATED WIRING AND CONDUIT BACK TO JUNCTION BOX SOURCE IN ROOM. RETAIN EXISTING LIGHTING BRANCH CIRCUIT FOR REMAINING DOWNSTREAM FIXTURES. FIELD VERIFY EXACT CIRCUIT AND LOCATION. (TYPICAL)
- D48 DISCONNECT AND REMOVE EM LIGHT AND ASSOCIATED WIRING AND CONDUIT BACK TO JUNCTION BOX SOURCE IN ROOM. RETAIN EXISTING BRANCH CIRCUIT AS REQUIRED FOR CONNECTION TO NEW EM LIGHT FIXTURE. FIELD VERIFY EXACT CIRCUIT AND LOCATION. (TYPICAL)



**KPL - First Floor Electrical Demolition Plan Unit "B"**  
1/8" = 1'-0"

KEY PLAN



A Project for:  
**Kendallville Public Library**

221 S Park Avenue  
Kendallville, Indiana 46755

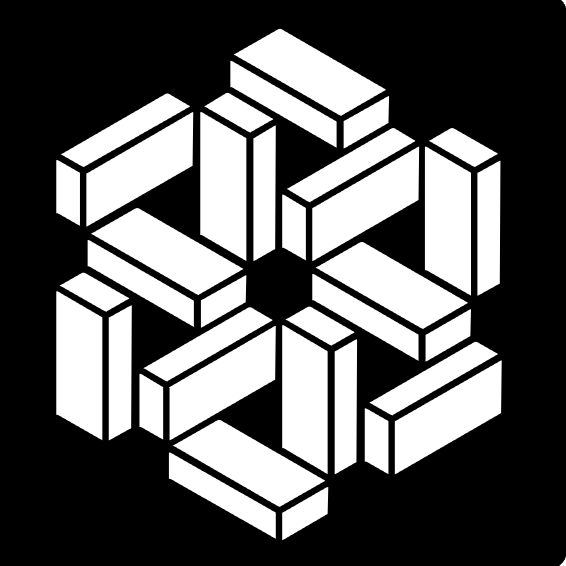
PROJECT NO. 8045	DATE 04-22-2025
REV. 1 Addendum 02	DATE 05/09/2025

SET DESCRIPTION  
**BID SET**

SHEET TITLE  
**KPL - First Floor  
Electrical Demolition  
Plan Unit "B"**

SHEET NUMBER

**EK101b**

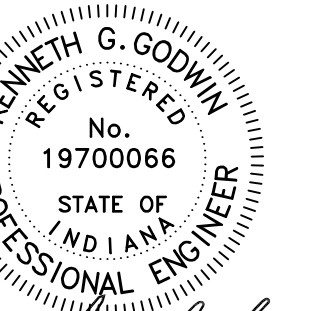


**MSKTD & Associates**

Architecture | Engineering | Interior Design

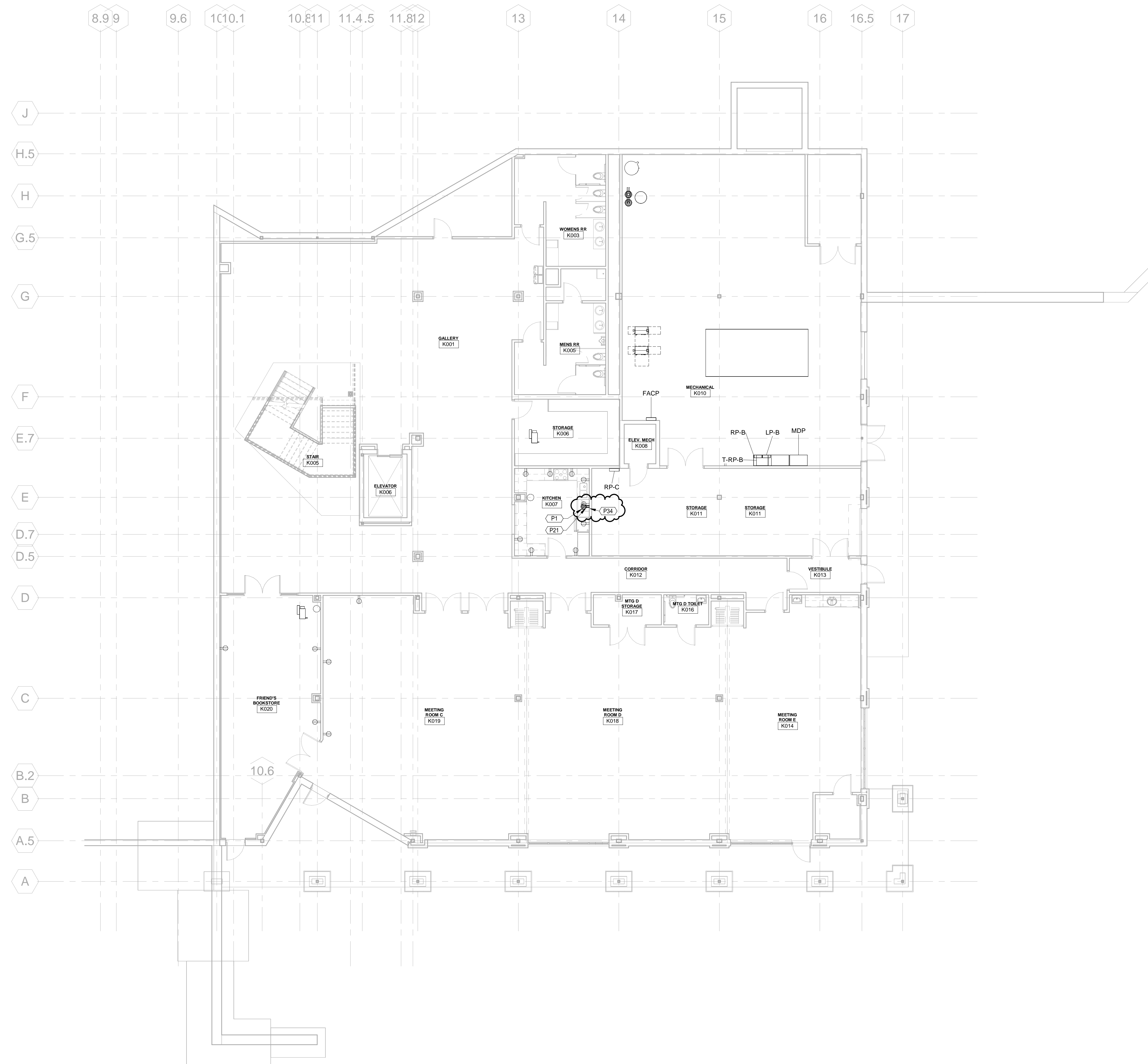
1715 Magnavox Way Fort Wayne, IN 46804 260.432.8337  
930 North Meridian Indianapolis, IN 46204 317.917.1190

www.msktd.com



*Kenneth G. Godwin*

Power Plan Notes	
P1	MOUNT GFCI RECEPTACLE IN WALL BELOW COUNTERTOP IN CABINET FOR DISHWASHER.
P21	CUT, PATCH, AND REPAIR EXISTING WALL AS REQUIRED TO MOUNT NEW DEVICE FLUSH AND CONCEAL NEW CONDUIT IN EXISTING WALL. PROVIDE ALL WIRING IN CONDUIT AND CONNECT TO EXISTING ELECTRICAL SYSTEM.
P34	CIRCUIT TO NEAREST SPARE 20A/1P BREAKER IN 120V POWER PANEL. LABEL CIRCUIT ON PANEL LEGEND.



**KPL - Lower Level Electrical Power Plan**  
1/8" = 1'-0"

A Project for:  
**Kendallville Public Library**

221 S Park Avenue  
Kendallville, Indiana 46755

PROJECT NO.	DATE
8045	04-22-2025
REV.	DATE
1 Addendum 02	05/09/2025

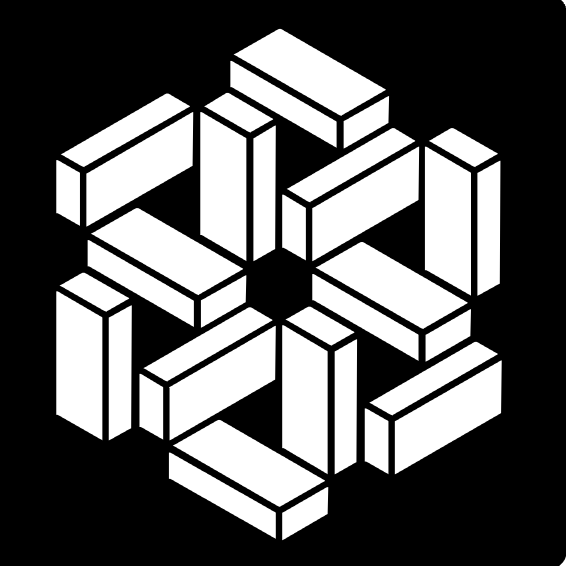
SET DESCRIPTION  
BID SET

SHEET TITLE  
KPL - Lower Level  
Electrical Power Plan

SHEET NUMBER

**EK200**





**MSKTD & Associates**

Architecture | Engineering | Interior Design

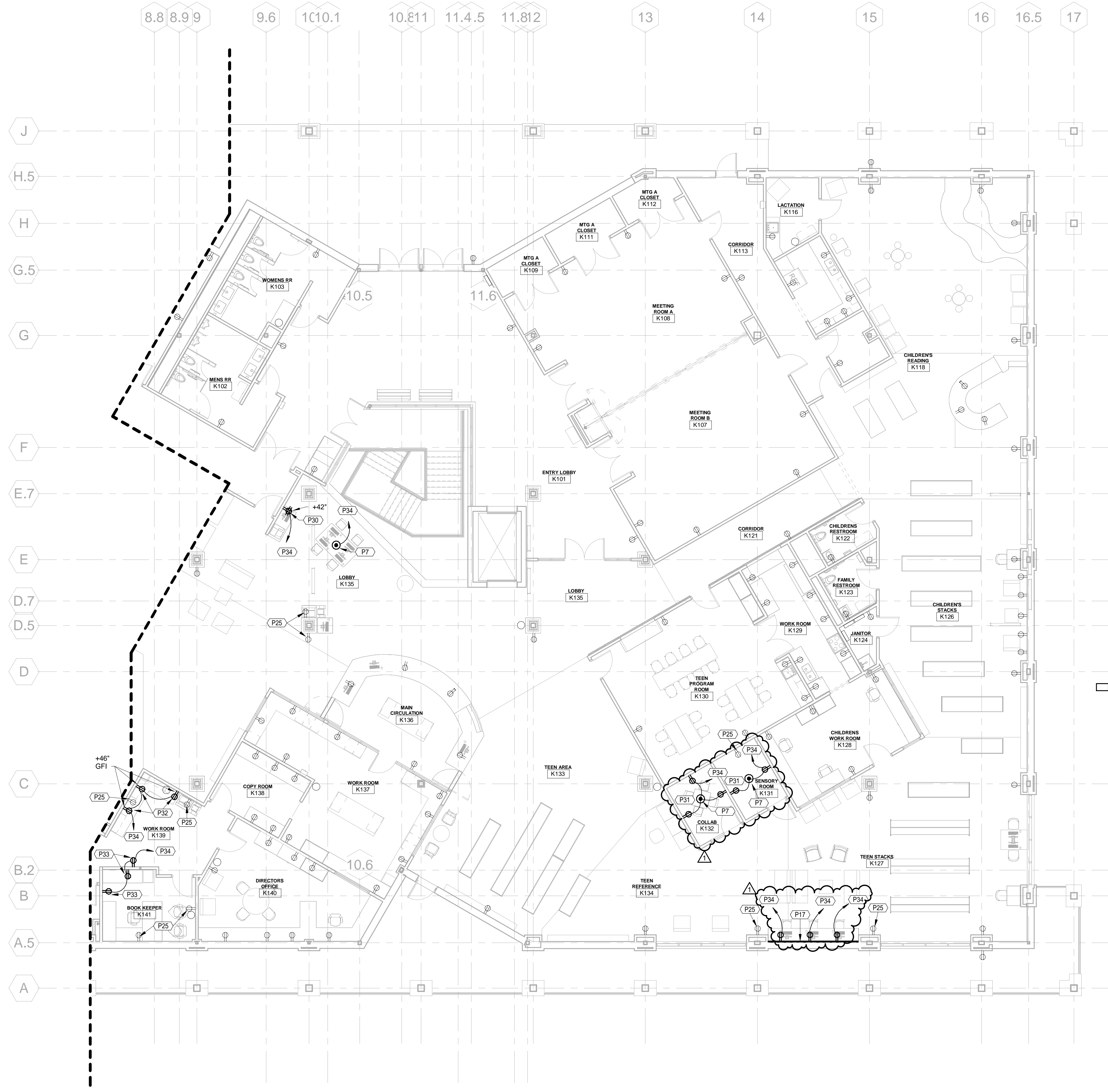
1715 Magnavox Way Fort Wayne, IN 46804 260.432.8337

930 North Meridian Indianapolis, IN 46204 317.917.1190



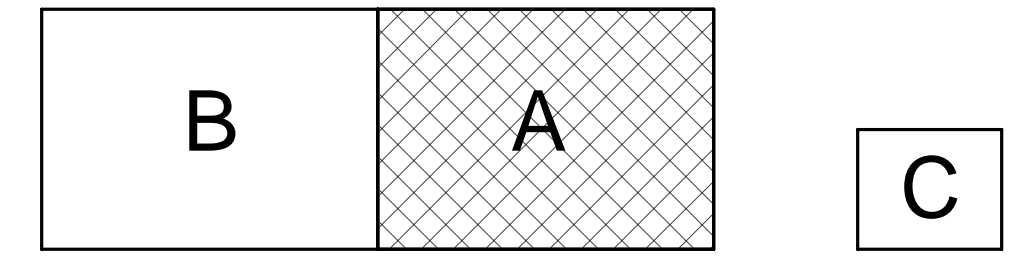
*K.G. Godwin*

Power Plan Notes	
P7	PROVIDE FIRE RATED POKE-THRU ASSEMBLY EQUAL TO WIREMOLD #84T SERIES 8 INCH POKE-THRU COMPLETE WITH TWO DUPLEX RECEPTACLES. SEE DETAIL #7 ON SHEET E500 FOR ADDITIONAL INFORMATION. PROVIDE ALL WIRING IN CONDUIT TO CONNECT TO EXISTING SPARE 20A/1P CIRCUIT BREAKER IN PANEL FOR CIRCUIT SHOWN.
P17	PROVIDE DUAL CHANNEL SURFACE METAL RACEWAY. MOUNT RACEWAY AT +2'-8" AFF TO CENTER OF RACEWAY. COORDINATE PLACEMENT WITH CASEWORK INSTALLER TO ENSURE RACEWAY WILL FIT BELOW COUNTERTOP. VERIFY LOCATION OF VERTICAL DROP AND ENSURE PROPER BUILD AND MATERIALS ARE PROVIDED. PROVIDE ALL WIRING IN CONDUIT AS REQUIRED TO CONNECT TO EXISTING SPARE 20A/1P CIRCUIT BREAKER IN PANEL FOR CIRCUIT SHOWN.
P25	EXISTING RECEPTACLE TO REMAIN. PROTECT DURING CONSTRUCTION.
P30	PROVIDE NEW RECEPTACLE IN EXISTING WALL. CUT, PATCH, AND REPAIR EXISTING WALL AS REQUIRED TO FLUSH MOUNT NEW DEVICE AND CONCEAL NEW CONDUIT IN EXISTING WALL. PROVIDE ALL WIRING IN CONDUIT AS REQUIRED TO CONNECT TO EXISTING SPARE 20A/1P CIRCUIT BREAKER IN PANEL FOR CIRCUIT SHOWN.
P31	PROVIDE ALL WIRING IN CONDUIT AS REQUIRED TO CONNECT NEW DEVICES SHOWN IN THIS ROOM TO EXISTING SPARE 20A/1P CIRCUIT BREAKER IN PANEL FOR CIRCUIT SHOWN.
P32	PROVIDE NEW RECEPTACLE IN EXISTING WALL ABOVE COUNTER TOP. SEE ARCHITECTURAL ELEVATIONS, CUT, PATCH, AND REPAIR EXISTING WALL AS REQUIRED TO FLUSH MOUNT NEW DEVICE AND CONCEAL NEW CONDUIT IN EXISTING WALL. PROVIDE ALL WIRING IN CONDUIT AS REQUIRED TO CONNECT TO EXISTING SPARE 20A/1P CIRCUIT BREAKER IN PANEL FOR CIRCUIT SHOWN.
P33	PROVIDE ALL WIRING IN CONDUIT AS REQUIRED TO CONNECT NEW DEVICE TO EXISTING SPARE 20A/1P CIRCUIT BREAKER IN PANEL FOR CIRCUIT SHOWN.
P34	CIRCUIT TO NEAREST SPARE 20A/1P BREAKER IN 120V POWER PANEL. LABEL CIRCUIT ON PANEL LEGEND.



**KPL - First Floor Electrical Power Plan Unit "A"**  
1/8" = 1'-0"

KEY PLAN



A Project for:  
**Kendallville Public Library**

221 S Park Avenue  
Kendallville, Indiana 46755

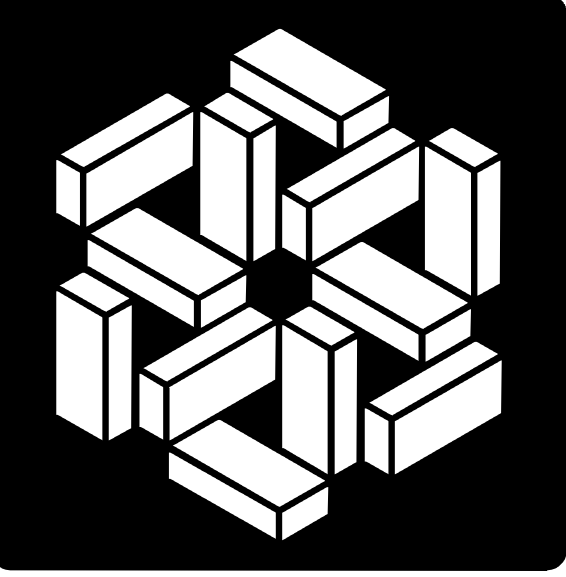
PROJECT NO. <b>8045</b>	DATE <b>04-22-2025</b>
REV. 1 Addendum 02	DATE 05/09/2025

SET DESCRIPTION  
**BID SET**

SHEET TITLE  
**KPL - First Floor  
Electrical Power Plan  
Unit "A"**

SHEET NUMBER

**EK201a**

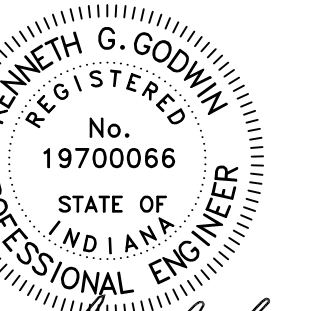


**MSKTD & Associates**

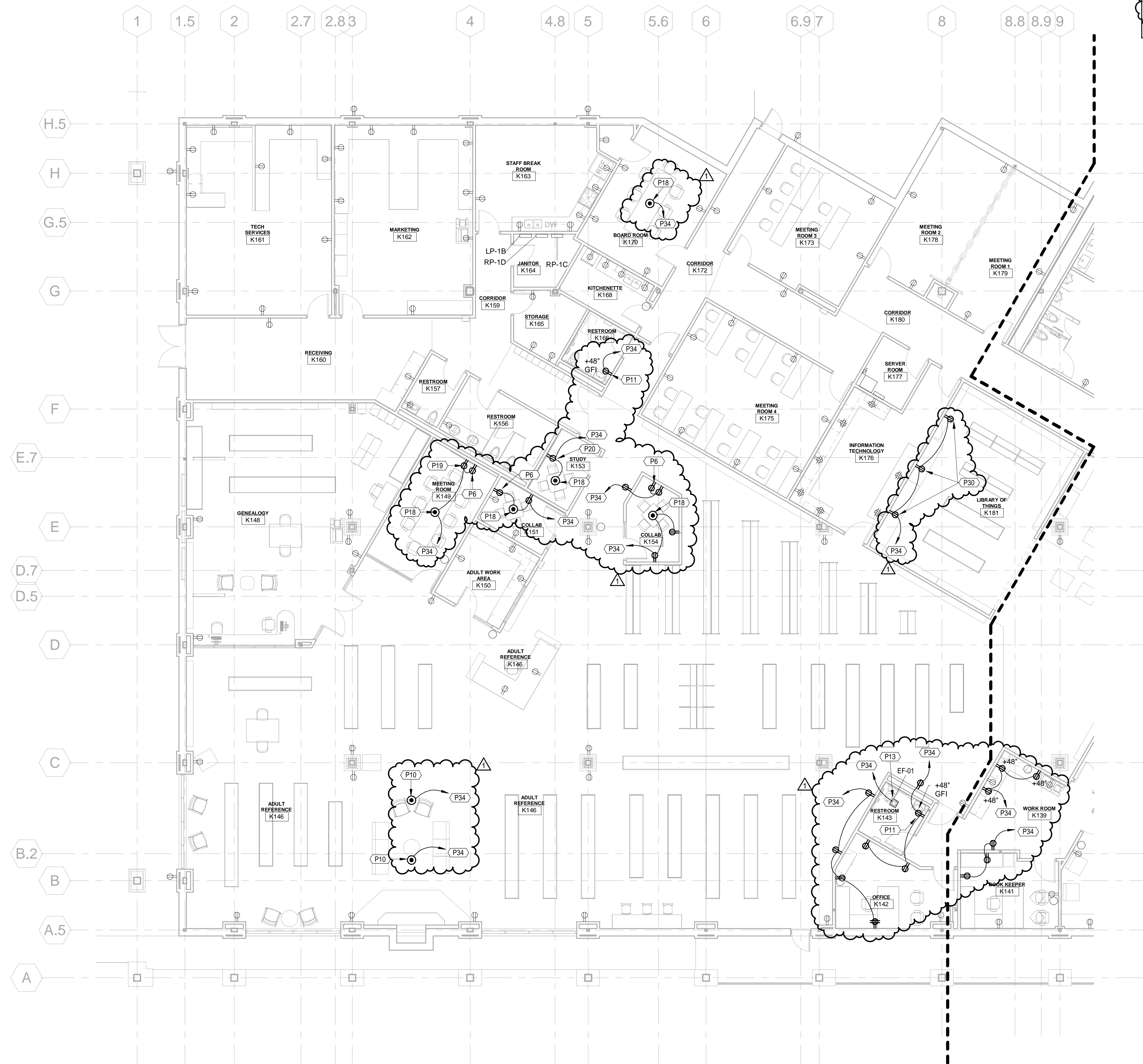
Architecture | Engineering | Interior Design

1715 Magnavox Way Fort Wayne, IN 46804 260.432.8337 930 North Meridian Indianapolis, IN 46204 317.917.1190

www.msktd.com



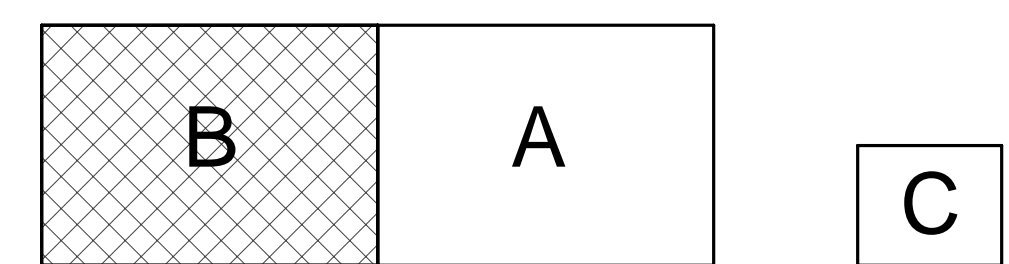
*Kenneth G. Godwin*



- Power Plan Notes**
- P6 PROVIDE RECEPTACLES AT THIS TV MONITOR LOCATION AT +6'-0" IN FSR BOX. SEE DETAIL #8 ON SHEET E-200 FOR MORE INFORMATION.
  - P10 FLOOR BOX EQUAL TO WIREMOLD #RFB2 SERIES ADJUSTABLE BOX COMPLETE WITH TWO GFCI DUPLEX RECEPTACLES, INTERNAL BRACKETS, AND FITTINGS. PROVIDE WIREMOLD #FFPCTO FLANGED COVER FOR BOX. FINISH TO BE AS SELECTED BY THE ARCHITECT. VERIFY EXACT LOCATION OF BOX WITH THE ARCHITECT/OWNER & FURNITURE SHOPS PRIOR TO INSTALLATION. ALL CONDUITS TO BOX TO BE ROUTED BELOW FLOOR SLAB. CONTRACTOR SHALL CUT THE FLOOR BACK TO COLUMN LOCATION FOR ROUTING NEW CONDUITS CONCEALED IN COLUMN WRAP. COORDINATE ALL WORK WITH GC FOR REWORK OF COLUMN WRAP.
  - P13 EF SHALL BE CONTROLLED BY LIGHTING CONTROLS IN THEIR RESPECTIVE ROOM. PROVIDE AND INSTALL ALL NECESSARY RELAYS FOR A COMPLETE SYSTEM.
  - P18 DUPLEX RECEPTACLES, INTERNAL BRACKETS, AND FITTINGS. PROVIDE WIREMOLD #FFPCTO FLANGED COVER FOR BOX. FINISH TO BE AS SELECTED BY THE ARCHITECT. VERIFY EXACT LOCATION OF BOX WITH THE ARCHITECT PRIOR TO INSTALLATION. ALL CONDUITS TO BOX TO BE ROUTED BELOW FLOOR SLAB. CONTRACTOR SHALL CUT THE FLOOR BACK TO EXISTING WALL. LOCATION FOR ROUTING NEW CONDUITS CONCEALED IN WALL. COORDINATE ALL WORK WITH GC FOR REWORK WALL AND FLOOR.
  - P19 NEW DUPLEX RECEPTACLE TO BE INSTALLED ON NEW FURRED OUT WALL. EXTEND BACKBOX AND CONDUIT TO NEAREST 20A NON-SWITCHED RECEPTACLE CIRCUIT.
  - P20 NEW DUPLEX RECEPTACLE TO BE INSTALLED ON NEW FURRED OUT WALL. CIRCUIT NEW DEVICE TO NEAREST 20A NON-SWITCHED RECEPTACLE CIRCUIT.
  - P30 PROVIDE NEW RECEPTACLE IN EXISTING WALL. CUT, PATCH, AND REPAIR EXISTING WALL AS REQUIRED TO FLUSH MOUNT NEW DEVICE AND CONCEAL NEW CONDUIT IN EXISTING WALL. PROVIDE ALL WIRING IN CONDUIT AS REQUIRED TO CONNECT TO EXISTING SPARE 20A/1P CIRCUIT BREAKER IN PANEL FOR CIRCUIT SHOWN.
- LEGEND

**KPL - First Floor Electrical Power Plan Unit "B"**  
1/8" = 1'-0"

KEY PLAN



A Project for:  
**Kendallville Public Library**

221 S Park Avenue  
Kendallville, Indiana 46755

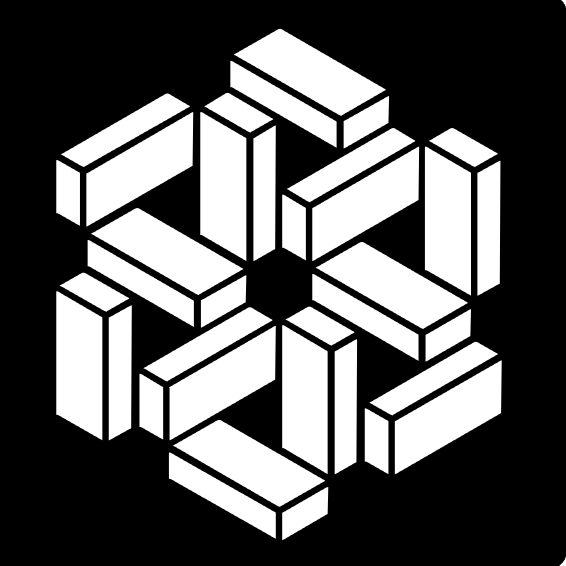
PROJECT NO. 8045	DATE 04-22-2025
REV. 1 Addendum 02	DATE 05/09/2025

SET DESCRIPTION  
**BID SET**

SHEET TITLE  
**KPL - First Floor  
Electrical Power Plan  
Unit "B"**

SHEET NUMBER

**EK201b**

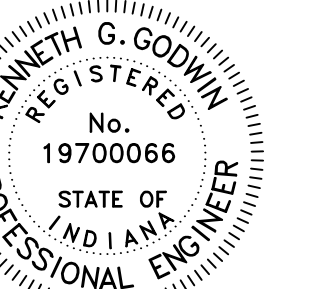


**MSKTD & Associates**

Architecture | Engineering | Interior Design

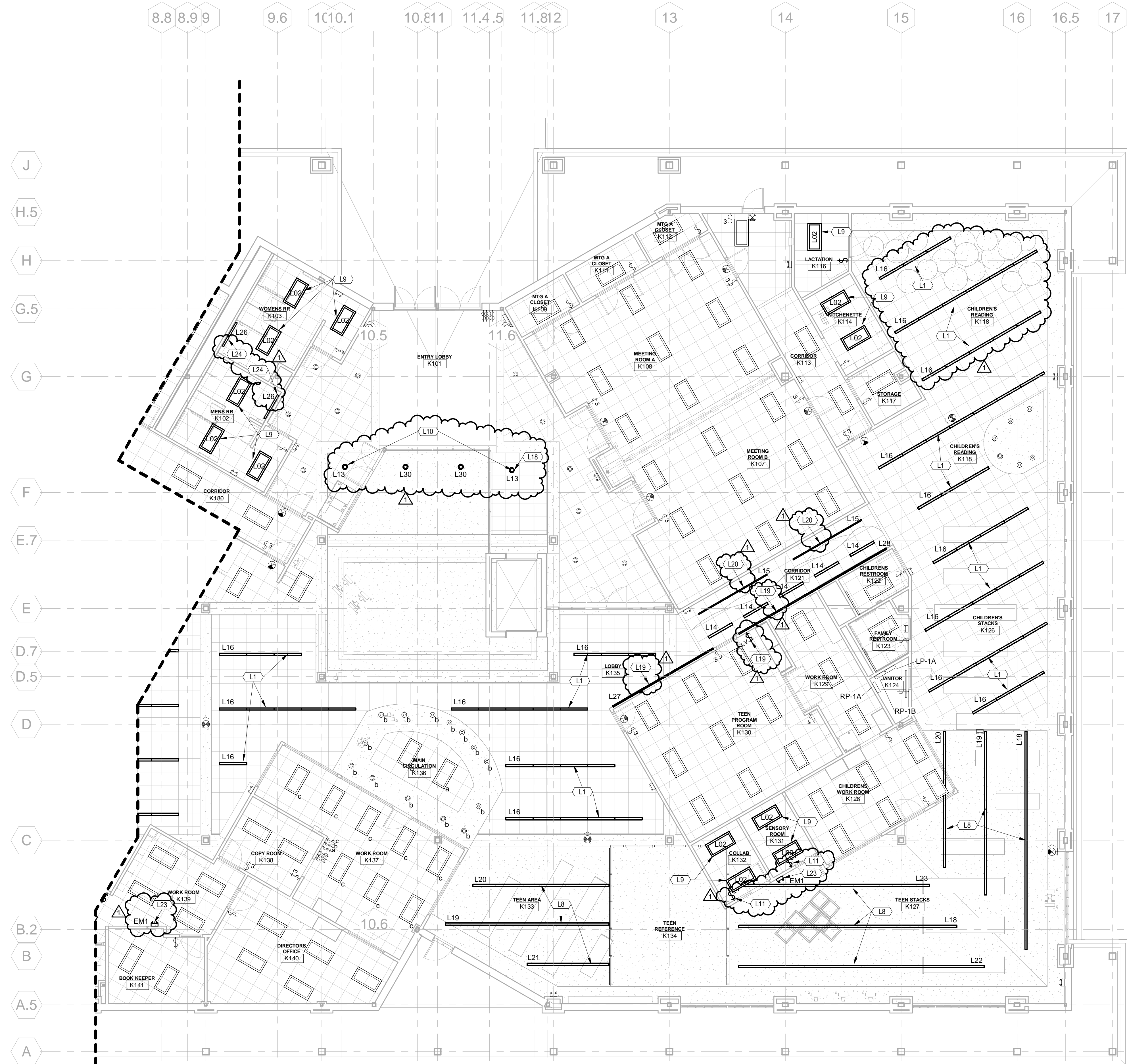
1715 Magnavox Way Fort Wayne, IN 46804 260.432.8337 | 930 North Meridian Indianapolis, IN 46204 317.917.1190

www.msktd.com



*K.G. Godwin*

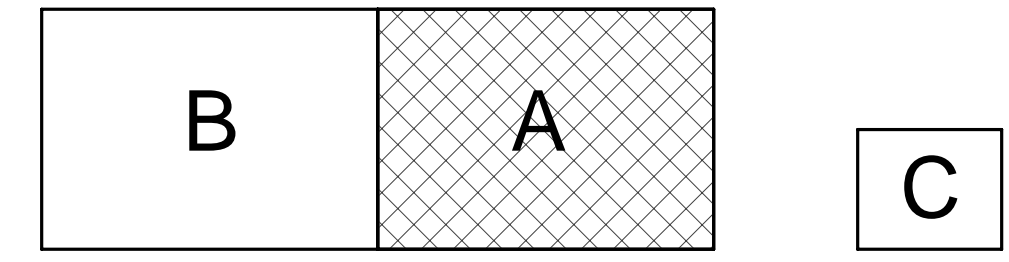
Lighting Plan Notes	
L1	INSTALL NEW LINEAR RECESSED LIGHTING IN EXISTING CEILING GRID. CONTRACTOR SHALL RE-USE EXISTING LIGHTING CIRCUITS AND CONTROLS IN EXISTING ROOMS.
L8	INSTALL NEW LINEAR PENDANT LIGHTING IN EXISTING HARD CEILING AREAS. CONTRACTOR SHALL RE-USE EXISTING LIGHTING CIRCUITS AND CONTROLS IN EXISTING ROOMS.
L9	INSTALL NEW 2X4 RECESSED LIGHT. CONTRACTOR SHALL RE-USE EXISTING LIGHTING CIRCUIT AND CONTROLS FOR NEW LIGHTS.
L10	INSTALL NEW OWNER PROVIDED LIGHTS. CONTRACTOR SHALL RE-USE EXISTING LIGHTING CIRCUITS AND CONTROLS FOR NEW LIGHTS.
L11	INSTALL NEW LIGHT SWITCH TO THE NEW LOCATION.
L16	INSTALL NEW L16 TRACK LIGHT FIXTURE TO BE SUSPENDED FROM NEW UPPER ACCOUSTICAL CEILING AT 10'-6". REFER TO ARCHITECTURAL DETAIL 11 ON SHEET AK302. EXTEND EXISTING CORRIDOR LIGHTING CIRCUIT TO THESE NEW LIGHT LOCATIONS. INSTALL NEW LIGHT SWITCH IN TEEN PROGRAM ROOM K130 TO CONTROL L15, L27 AND L28. COORDINATE FINAL SWITCH LOCATION WITH OWNER.
L19	INSTALL NEW L19 TRACK LIGHT FIXTURE ON EXISTING WALL UNDER NEW PLASTIC LAMINATE. REFER TO ARCHITECTURAL DETAILS 11 & 12 ON SHEET AK302. EXTEND EXISTING CORRIDOR LIGHTING CIRCUIT TO THESE NEW LIGHT LOCATIONS. INSTALL NEW LIGHT SWITCH IN TEEN PROGRAM ROOM K130 TO CONTROL L15, L27 AND L28. COORDINATE FINAL SWITCH LOCATION WITH OWNER.
L20	INSTALL NEW L15 TRACK LIGHT FIXTURE TO BE SUSPENDED FROM NEW UPPER ACCOUSTICAL CEILING AT 10'-6". FIXTURE SHALL BE SUSPENDED 1' BELOW ACCOUSTICAL CEILING. REFER TO ARCHITECTURAL DETAIL 11 ON SHEET AK302. EXTEND EXISTING CORRIDOR LIGHTING CIRCUIT TO THESE NEW LIGHT LOCATIONS. INSTALL NEW LIGHT SWITCH IN TEEN PROGRAM ROOM K130 TO CONTROL L15, L27 AND L28. COORDINATE FINAL SWITCH LOCATION WITH OWNER.
L23	INSTALL NEW L19 TRACK LIGHT FIXTURE ON EXISTING WALL UNDER NEW PLASTIC LAMINATE. REFER TO ARCHITECTURAL DETAILS 11 & 12 ON SHEET AK302. EXTEND EXISTING CORRIDOR LIGHTING CIRCUIT TO THESE NEW LIGHT LOCATIONS. INSTALL NEW LIGHT SWITCH IN TEEN PROGRAM ROOM K130 TO CONTROL L15, L27 AND L28. COORDINATE FINAL SWITCH LOCATION WITH OWNER.
L24	INSTALL NEW WALL MOUNTED VANITY LIGHT FIXTURE ABOVE MIRROR. RE-CIRCUIT TO EXISTING LIGHTING CIRCUIT AND CONTROLS.



**KPL - First Floor Electrical Lighting Plan Unit "A"**

1/8" = 1'-0"

KEY PLAN



A Project for:  
**Kendallville Public Library**

221 S Park Avenue  
Kendallville, Indiana 46755

PROJECT NO. 8045 | DATE 04-22-2025

REV. 1 Addendum 02 | DATE 05/09/2025

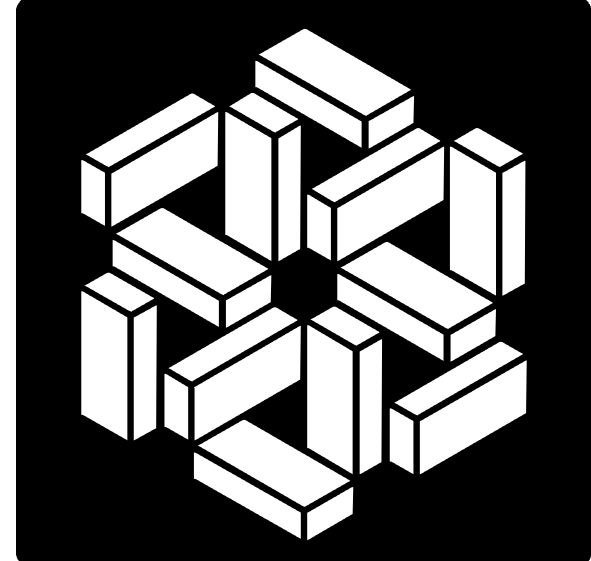
SET DESCRIPTION  
BID SET

SHEET TITLE  
KPL - First Floor  
Electrical Lighting Plan  
Unit "A"

SHEET NUMBER

**EK301a**

5/9/2025 9:46:30 AM



**MSKTD & Associates**

Architecture | Engineering | Interior Design

1715 Magnavox Way Fort Wayne, IN 46804 260.432.8337

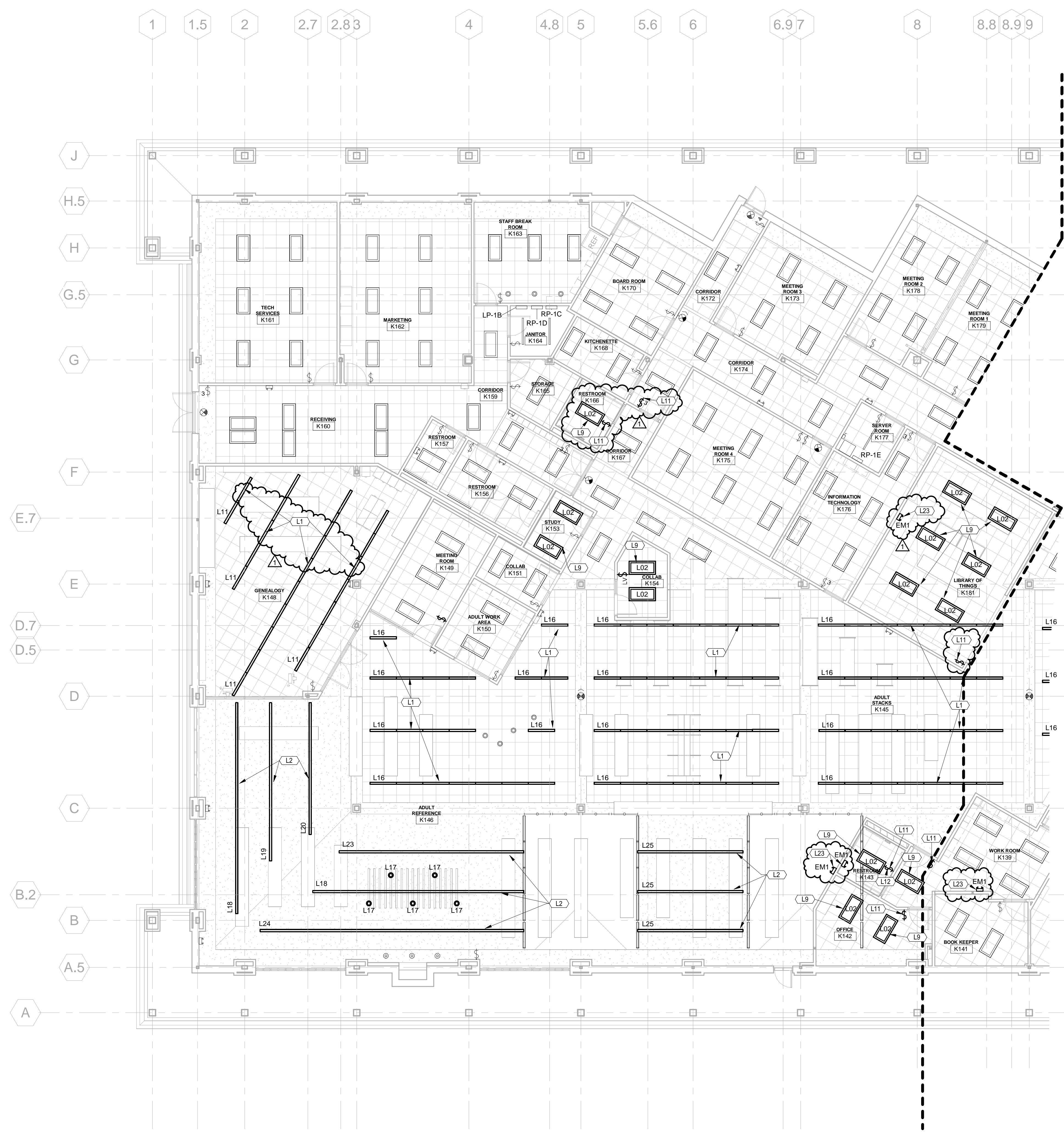
930 North Meridian Indianapolis, IN 46204 317.917.1190

www.msktd.com



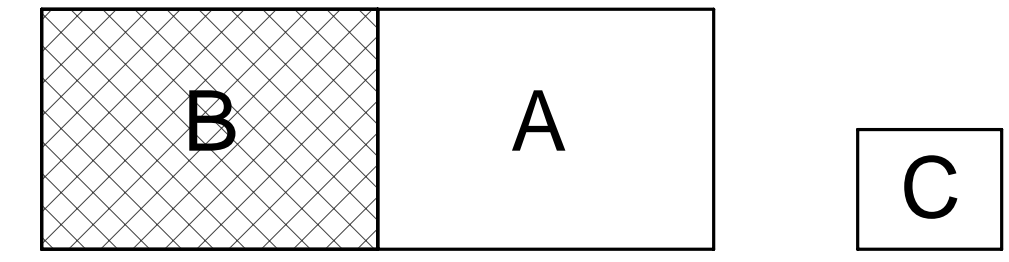
*Kenneth G. Godwin*

Lighting Plan Notes	
L1	INSTALL NEW LINEAR RECESSED LIGHTING IN EXISTING CEILING GRID. CONTRACTOR SHALL RE-USE EXISTING LIGHTING CIRCUITS AND CONTROLS IN EXISTING ROOMS.
L2	INSTALL NEW SUSPENDED PENDANT LIGHT FIXTURE AT 9'-0" A.F.F. TO BOTTOM OF FIXTURE.
L9	INSTALL NEW 2x4 RECESSED LIGHT. CONTRACTOR SHALL RE-USE EXISTING LIGHTING CIRCUIT AND CONTROLS FOR NEW LIGHTS.
L11	INSTALL NEW LIGHT SWITCH.
L12	PROVIDE AND INSTALL A TIME-DELAY RELAY WITH 5 MINUTE DELAY OFF AND WIRE EXHAUST FAN TO THIS NEW LIGHT SWITCH.
L23	INSTALL NEW EM LIGHT FIXTURE. EXTEND EXISTING EM LIGHTING CIRCUIT TO THIS NEW LIGHT LOCATION. EM LIGHTS TO BE WIRED AHEAD OF ANY SWITCHING.



**KPL - First Floor Electrical Lighting Plan Unit "B"**  
1/8" = 1'-0"

KEY PLAN



A Project for:  
**Kendallville Public Library**

221 S Park Avenue  
Kendallville, Indiana 46755

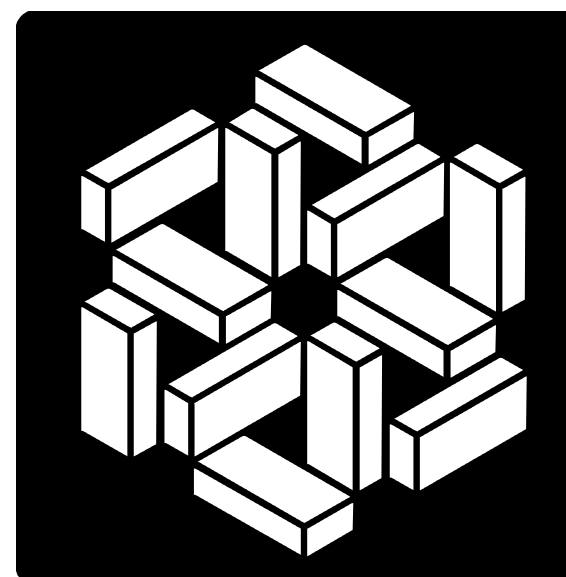
PROJECT NO.	DATE
8045	04-22-2025
REV.	DATE
1 Addendum 02	05/09/2025

SET DESCRIPTION  
BID SET

SHEET TITLE  
KPL - First Floor  
Electrical Lighting Plan  
Unit "B"

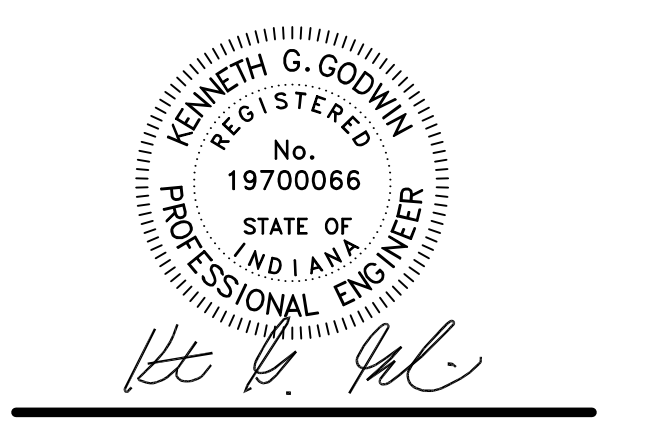
SHEET NUMBER

**EK301b**

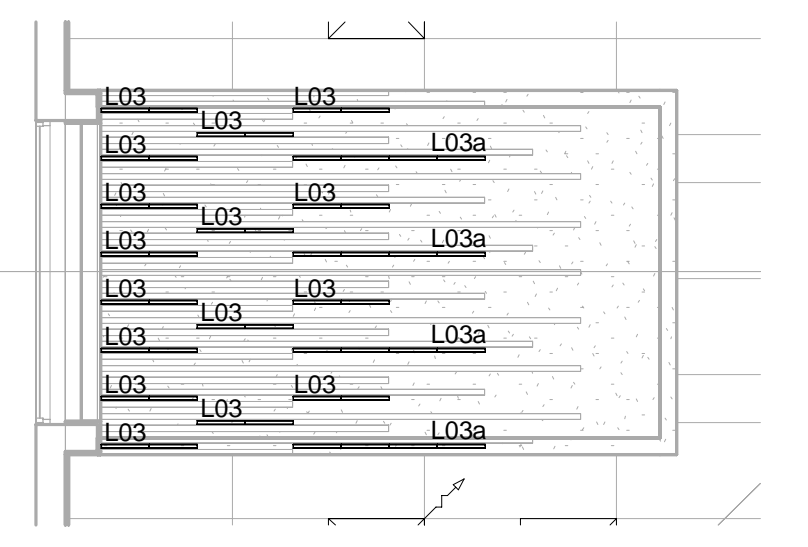
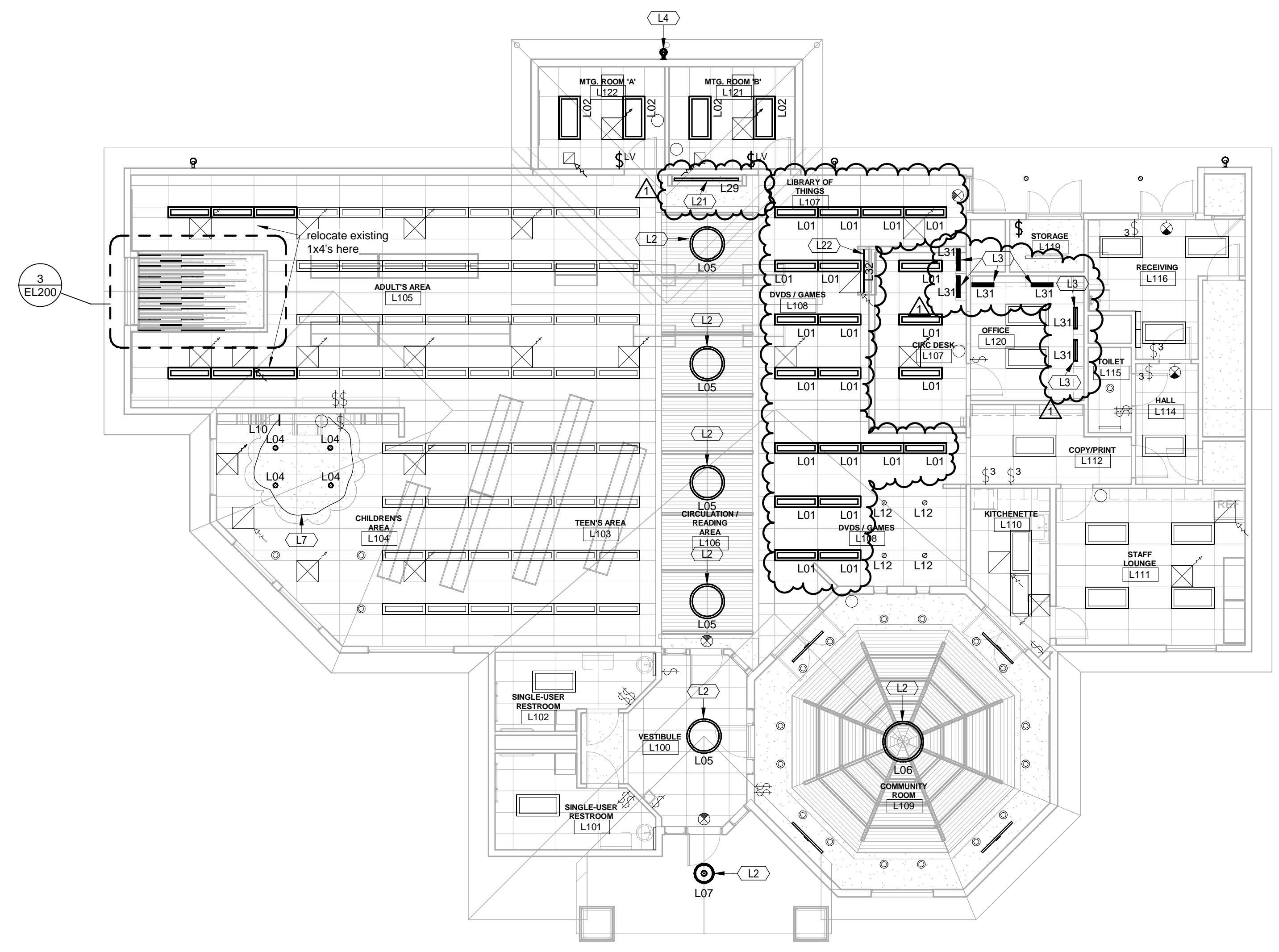


**MSKTD & Associates**  
 Architecture | Engineering | Interior Design

1715 Magnavox Way Fort Wayne, IN 46804 260.432.8337  
 930 North Meridian Indianapolis, IN 46204 317.917.1190  
 www.msktd.com



- Lighting Plan Notes**
- L3 INSTALL UNDER CABINET TASK LIGHTS UNDER UPPER CABINETS. COORDINATE ROUGH-IN HEIGHT WITH ARCHITECTURAL PLANS AND SHOP DRAWINGS.
  - L7 INSTALL NEW ROPE LIGHTING ABOVE DECORATIVE TREE. CONTRACTOR SHALL CIRCUIT TO EXISTING LIGHTING CIRCUIT AND CONTROL IN EXISTING AREA.
  - L21 INSTALL NEW L23 LIGHT FIXTURE. FIXTURE SHALL BE SURFACE MOUNTED INSIDE ALCOVE. REFER TO ARCHITECTURAL DETAIL 4 ON SHEET ALSO. EXTEND EXISTING AREA LIGHTING CIRCUIT TO THIS NEW LIGHT LOCATION. LIGHT SHALL BE CONTROLLED BY EXISTING AREA LIGHTING CONTROL.
  - L22 INSTALL NEW L32 LIGHT FIXTURE. FIXTURE SHALL BE SURFACE MOUNTED INSIDE GLASS DISPLAY CASE. REFER TO ARCHITECTURAL DETAIL 2 & 8 ON SHEET ALSO. EXTEND EXISTING AREA LIGHTING CIRCUIT TO THIS NEW LIGHT LOCATION. LIGHT SHALL BE CONTROLLED BY EXISTING AREA LIGHTING CONTROL. MOUNT DRIVER IN ACCESSIBLE SPACE IN BASEMENT AND ROUTED CABLING THRU POKE THRU.

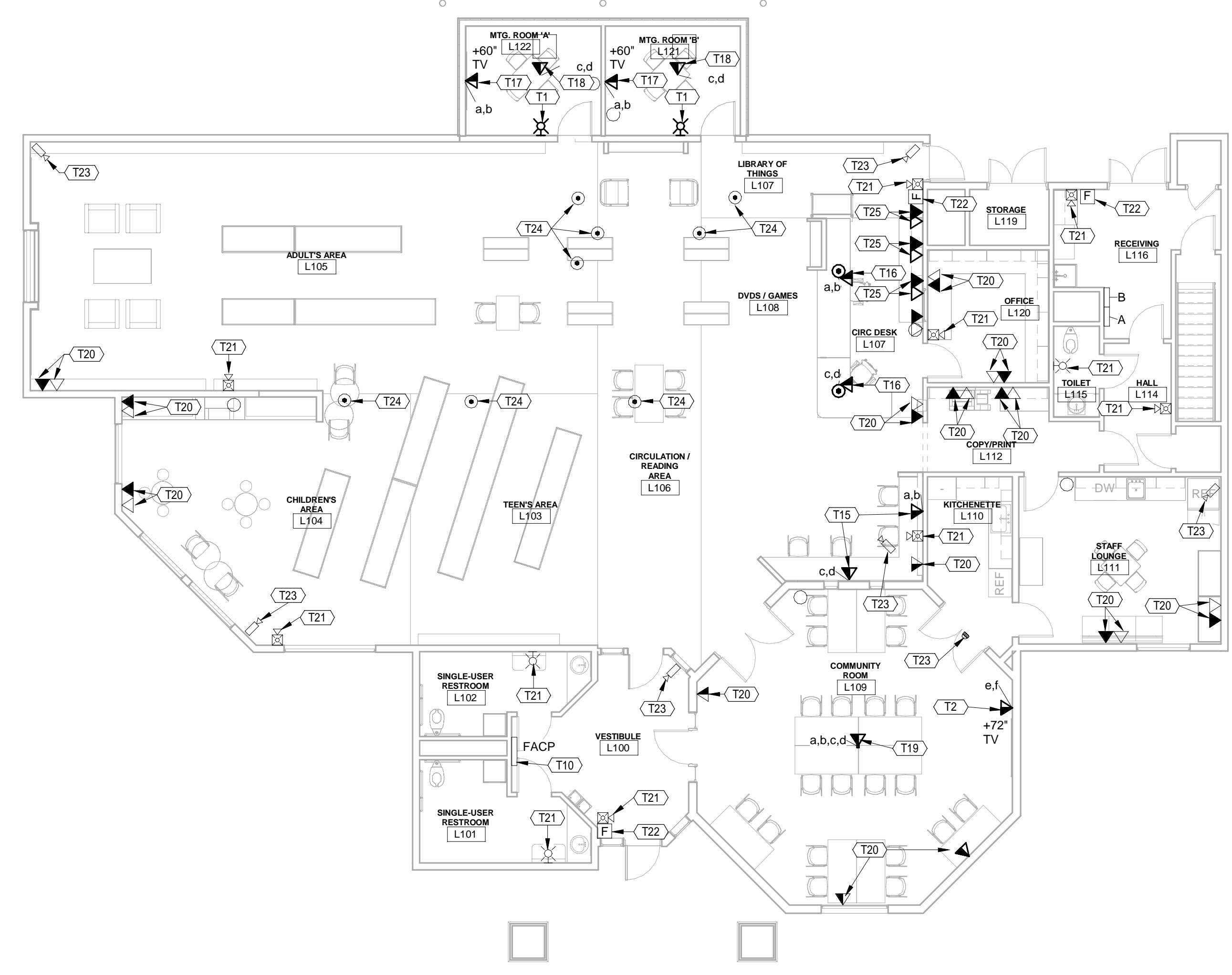


**3 LIMB - Enlarged Lighting Plan**  
 1/4" = 1'-0"

**LIMB - First Floor Electrical Lighting Plan**  
 1/8" = 1'-0"

**NEW TELECOMMUNICATIONS WIRING SCHEDULE - LIMBERLOST**

ROOM NUMBER	OUTLET ID	CABLE TYPE	QUANTITY	TO TERMINAL BOARD NUMBER	CONNECTOR DESIGNATION(S)	REMARKS
L107	a,b	DATA	2	BASEMENT	L107-A, L107-B	IN POKE-THRU UNIT
L107	c,d	DATA	2	BASEMENT	L107-C, L107-D	IN POKE-THRU UNIT
L108	a,b	DATA	2	BASEMENT	L108-A, L108-B	
L108	c,d	DATA	2	BASEMENT	L108-C, L108-D	
L109	a,b,c,d	DATA	4	BASEMENT	L109-A, L109-B, L109-C, L109-D	IN FLOOR BOX UNIT
L121	a,b	DATA	2	BASEMENT	L121-A, L121-B	IN FSR BOX
L121	c,d	DATA	2	BASEMENT	L121-C, L121-D	IN FLOOR BOX UNIT
L122	a,b	DATA	2	BASEMENT	L122-A, L122-B	IN FSR BOX
L122	c,d	DATA	2	BASEMENT	L122-C, L122-D	IN FLOOR BOX UNIT



**LIMB - First Floor Telecom Plan**  
 1/8" = 1'-0"

**Telecom & Fire Alarm Plan Notes**

- T1 PROVIDE NEW FIRE ALARM SIGNAL IN NEW LOCATION SHOWN. PROVIDE ALL FIRE ALARM CABLING IN CONDUIT AS REQUIRED TO CONNECT NEW SIGNAL TO EXISTING FIRE ALARM SYSTEM. FIELD VERIFY EXACT CIRCUIT AND LOCATION. PROVIDE NEW NAC PANEL, POWER SUPPLIES, CONTROL CARDS, ETC. AS REQUIRED FOR A COMPLETE AND OPERATIONAL SYSTEM.
- T2 PROVIDE NEW DATA OUTLET. SEE DETAIL #5 ON SHEET E500. PROVIDE NEW DATA CABLING ROUTED ABOVE NEW AND EXISTING CEILING UTILIZING "J" HANGERS FROM OUTLET BACK TO EXISTING DATA RACK IN ROOM K177.
- T10 EXISTING FIRE ALARM CONTROL PANEL TO REMAIN. PROVIDE ALL CARDS, POWER SUPPLIES, PROGRAMMING, ETC. AS REQUIRED TO SUPPORT NEW DEVICES.
- T15 PROVIDE NEW DATA OUTLET. SEE DETAIL #5 ON SHEET E500. PROVIDE NEW DATA CABLING ROUTED ABOVE NEW AND EXISTING CEILING UTILIZING "J" HANGERS FROM OUTLET BACK TO EXISTING DATA RACK IN BASEMENT (SEE NOTE P24 ON SHEET EL100).
- T16 PROVIDE NEW DATA OUTLET IN POKE-THRU UNIT. SEE DETAIL #7 ON SHEET E500 AND NOTE P15 ON SHEET EL100. PROVIDE NEW DATA CABLING ROUTED IN (1) 1" CONDUIT BELOW FLOOR SLAB IN SPACE ABOVE BASEMENT CEILING AND TURN UP AT WALL TO ABOVE FIRST FLOOR CEILING. ROUTE ABOVE FIRST FLOOR NEW AND EXISTING CEILING UTILIZING "J" HANGERS FROM OUTLET BACK TO EXISTING DATA RACK IN BASEMENT (SEE NOTE P24 ON SHEET EL100).
- T17 PROVIDE NEW DATA OUTLET AT TV MONITOR LOCATION IN FSR BOX. SEE DETAIL #8 ON SHEET E500 AND NOTE P6 ON SHEET EL100. PROVIDE NEW DATA CABLING ROUTED ABOVE NEW AND EXISTING CEILING UTILIZING "J" HANGERS FROM OUTLET TO EXISTING DATA RACK IN BASEMENT (SEE NOTE P24 ON SHEET EL100).
- T18 PROVIDE NEW DATA OUTLET IN FLOOR BOX UNIT. SEE NOTE P22 ON SHEET EL100. PROVIDE NEW DATA CABLING ROUTED IN (1) 1" CONDUIT BELOW FLOOR SLAB AND TURN UP AT WALL TO ABOVE FIRST FLOOR CEILING. ROUTE ABOVE FIRST FLOOR NEW AND EXISTING CEILING UTILIZING "J" HANGERS FROM OUTLET BACK TO EXISTING DATA RACK IN BASEMENT (SEE NOTE P24 ON SHEET EL100).
- T19 PROVIDE NEW DATA OUTLET IN FLOOR BOX UNIT. SEE NOTE P23 ON SHEET EL100. PROVIDE NEW DATA CABLING ROUTED IN (1) 1" CONDUIT BELOW FLOOR SLAB AND TURN UP AT WALL TO ABOVE FIRST FLOOR CEILING. ROUTE ABOVE FIRST FLOOR NEW AND EXISTING CEILING UTILIZING "J" HANGERS FROM OUTLET BACK TO EXISTING DATA RACK IN BASEMENT (SEE NOTE P24 ON SHEET EL100). CUT, PATCH, AND REPAIR EXISTING FLOOR AS REQUIRED.
- T20 EXISTING TELECOMMUNICATIONS OUTLET TO REMAIN. PROTECT DURING CONSTRUCTION.
- T21 EXISTING FIRE ALARM SIGNAL TO REMAIN. PROTECT DURING CONSTRUCTION.
- T22 EXISTING FIRE ALARM MANUAL PULL STATION TO REMAIN. PROTECT DURING CONSTRUCTION.
- T23 EXISTING SECURITY CAMERA TO REMAIN. PROTECT DURING CONSTRUCTION.
- T24 EXISTING FLOOR BOX TO REMAIN. PROTECT DURING CONSTRUCTION.
- T25 PROVIDE NEW TELECOMMUNICATIONS OUTLET IN WALL ABOVE COUNTER TOP. SEE ARCHITECTURAL ELEVATIONS. INTERCEPT EXISTING CONDUIT MADE AVAILABLE BY OUTLET SHOWN TO BE REMOVED AND EXTEND TO NEW OUTLET. PROVIDE NEW TELECOMMUNICATIONS CABLING THROUGH NEW AND EXISTING CONDUIT BACK TO PREVIOUS TERMINATION. NEW OUTLET AND CABLING TO MATCH EXISTING OUTLET AND CABLING SHOWN TO BE REMOVED. FIELD VERIFY. SEE NOTE D42 ON SHEET EL100.

A Project for:  
**Kendallville Public Library - Limberlost**  
 164 Kelly Street  
 Rome City, IN 46784

PROJECT NO. **8045** DATE **04-22-2025**  
 REV. 1 Addendum 02 DATE 05/09/2025

SET DESCRIPTION  
**BID SET**

SHEET TITLE  
**LIMB - Electrical Lighting & Telecom Plans**

SHEET NUMBER

**EL200**