

ADDENDUM NO. 3

Elm Road Elementary School – Classroom Addition

Penn High School Instructional and Activity Space Addition

Penn-Harris-Madison School Corporation
Mishawaka, Indiana

Project No. 223211.00/223213.00

Index of Contents

Addendum No. 3, 3 items, 1 page

PHM Drawing Sets for Reference available for download (per Contractor's Request):
1987 Penn HS – Civil & Site Construction Documents

June 30, 2025

I hereby certify that this Addendum was prepared by me or under my direct supervision and that I am a duly registered Architect/Engineer under the Laws of the State of Indiana.

FANNING/HOWEY ASSOCIATES, INC.
ARCHITECTS/ENGINEERS/CONSULTANTS



Paul A. Miller, License No. AR10800161
Expiration Date: 12/31/2025

TO: ALL BIDDERS OF RECORD

ADDENDUM NO. 3 to Drawings and Project Manual, dated April 10, 2025, for Penn-Harris-Madison School Corporation, 55900 Bittersweet Road, Mishawaka, Indiana 46545; as prepared by Fanning/Howey Associates, Inc., Indianapolis, Indiana.

This Addendum shall hereby be and become a part of the Contract Documents the same as if originally bound thereto.

The following clarifications, amendments, additions, revisions, changes, and modifications change the original Contract Documents only in the amount and to the extent hereinafter specified in this Addendum.

Each bidder shall acknowledge receipt of this Addendum in his proposal or bid.

NOTE: Bidders are responsible for becoming familiar with every item of this Addendum. (This includes miscellaneous items at the very end of this Addendum.)

RE: ALL BIDDERS

ITEM NO. 1. PROJECT MANUAL, SECTION 01 50 00 - TEMPORARY FACILITIES AND CONTROLS

- A. Add 3.4, 3., change the last sentence as follows: "At Elm Road Elementary School (Unit C), construct a temporary (all-weather) access road to provide unimpeded traffic for construction process. At the restroom addition (Unit A), protect the existing 8' wide concrete sidewalk during construction."

ITEM NO. 2. PROJECT MANUAL, SECTION 09 65 19 – RESILIENT TILE FLOORING -

- A. Replace 2.3, C., as follows:

"C. Thickness: Manufacturer's standard for LVT shall be 3mm."

ITEM NO. 3. ELM ROAD ES – DRAWING SHEET – P-601:

- A. Detail 1, Add the following note: "The hot water circulation pump shall be B&G model PL-30B (1/12 HP, 120V/1 Ph., 1.4 AMPS, 2650 RPM). The pump shall be controlled by a pipe mounted aqua stat by Honeywell, Model L6006C with a 10 deg. Temp. differential – On at 130 Deg. F – Off at 140 Deg. F."
- B. Detail 7, Add the following note: "The balance valve shall be B&G Circuit Setter Model CB-3/4 and set to 0.5 GPM."

ITEM NO. 4. PENN HS – DRAWING SHEET – PL.11:

- A. Foundation Plan 1-PL11, Add the following note: "Refer to existing 1987 Construction Drawings C6 and C7 for rim elevations for the sanitary inverts to the north and south of the addition."

END OF ADDENDUM

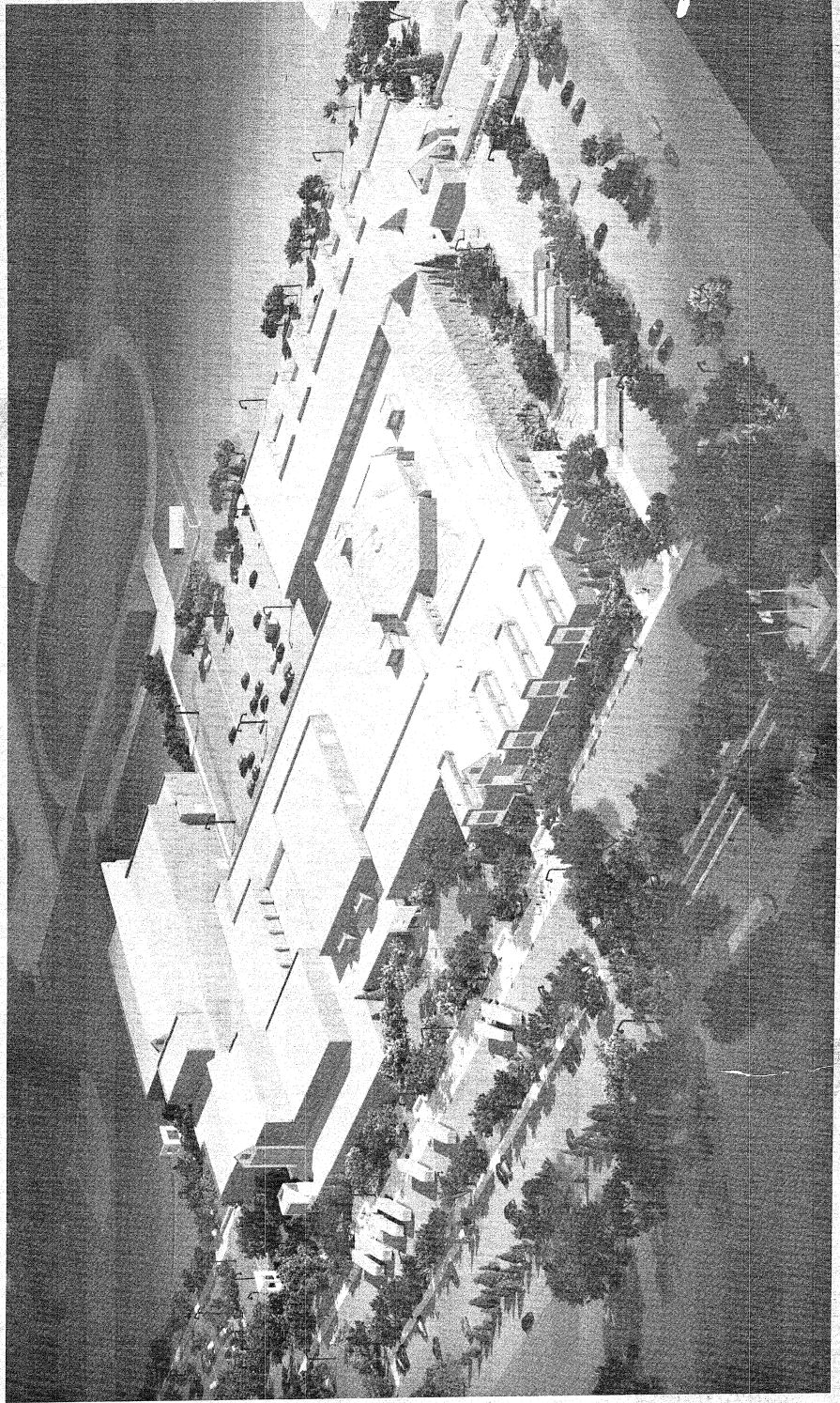
RENOVATIONS & ADDITIONS TO THE

PENN HIGH SCHOOL

PENN-HARRIS-MADISON SCHOOL CORP.

OSCEOLA, INDIANA

VOLUME 1 GENERAL BUILDING



DAVERMAN / HMFH

SHEET INDEX

VOLUME 1
GENERAL BUILDING

VOLUME 2
STRUCTURAL

VOLUME 3
MECHANICAL
PLUMBING

VOLUME 4
ELECTRICAL
ELECTRICAL

VOLUME 5
EQUIPMENT
EDUCATIONAL EQ

CIVIL	
C-1	SITE PLAN
C-2	SITE LAYOUT PLAN, SOUTH
C-3	SITE LAYOUT PLAN, NORTH
C-4	GRADING & DRAINAGE PLAN, NORTH
C-5	GRADING & DRAINAGE PLAN, SOUTH
C-6	SITE UTILITY PLAN, NORTH
C-7	SITE UTILITY PLAN, SOUTH
C-8	LANDSCAPE PLAN, SOUTH
C-9	LANDSCAPE PLAN, NORTH
C-10	FURNISHING PLANS AT ENTRANCES AND DETAILS
C-11	FRAGMENTED PLANS AT ENTRANCES AND DETAILS
C-12	IRRIGATION PLAN, SOUTH
C-13	IRRIGATION PLAN, NORTH
C-14	UTILITY DETAILS
C-15	SECTION DETAILS
C-16	DEMOLITION PLAN, SOUTH
C-17	DEMOLITION PLAN, NORTH

ARCHITECTURAL

1	1/30TH SCALE, 1ST FLOOR PLANS	(OFFBELL)
2	UNIT 1, 1ST FLOOR PLANS	(OFFBELL)
3	UNIT 2, 1ST FLOOR PLANS	(OFFBELL)
4	UNIT 3, 1ST FLOOR PLANS	(OFFBELL)
5	UNIT 4, 1ST FLOOR PLANS	(OFFBELL)
6	UNIT 5, 1ST FLOOR PLANS	(OFFBELL)
7	UNIT 6, 1ST FLOOR PLANS	(OFFBELL)
8	UNIT 7, 1ST FLOOR PLANS	(OFFBELL)
9	UNIT 8, 1ST FLOOR PLANS	(OFFBELL)
10	UNIT 9, 1ST FLOOR PLANS	(OFFBELL)
11	UNIT 10, 1ST FLOOR PLANS	(OFFBELL)
12	UNIT 11, 1ST FLOOR PLANS	(OFFBELL)
13	UNIT 12, 1ST FLOOR PLANS	(OFFBELL)
14	UNIT 13, 1ST FLOOR PLANS	(OFFBELL)
15	UNIT 14, 1ST FLOOR PLANS	(OFFBELL)
16	UNIT 15, 1ST FLOOR PLANS	(OFFBELL)
17	UNIT 16, 1ST FLOOR PLANS	(OFFBELL)
18	UNIT 17, 1ST FLOOR PLANS	(OFFBELL)
19	UNIT 18, 1ST FLOOR PLANS	(OFFBELL)
20	UNIT 19, 1ST FLOOR PLANS	(OFFBELL)
21	UNIT 20, 1ST FLOOR PLANS	(OFFBELL)
22	UNIT 21, 1ST FLOOR PLANS	(OFFBELL)
23	UNIT 22, 1ST FLOOR PLANS	(OFFBELL)
24	UNIT 23, 1ST FLOOR PLANS	(OFFBELL)
25	UNIT 24, 1ST FLOOR PLANS	(OFFBELL)
26	UNIT 25, 1ST FLOOR PLANS	(OFFBELL)
27	UNIT 26, 1ST FLOOR PLANS	(OFFBELL)
28	UNIT 27, 1ST FLOOR PLANS	(OFFBELL)
29	UNIT 28, 1ST FLOOR PLANS	(OFFBELL)
30	UNIT 29, 1ST FLOOR PLANS	(OFFBELL)
31	UNIT 30, 1ST FLOOR PLANS	(OFFBELL)
32	UNIT 31, 1ST FLOOR PLANS	(OFFBELL)
33	UNIT 32, 1ST FLOOR PLANS	(OFFBELL)
34	UNIT 33, 1ST FLOOR PLANS	(OFFBELL)
35	UNIT 34, 1ST FLOOR PLANS	(OFFBELL)
36	UNIT 35, 1ST FLOOR PLANS	(OFFBELL)
37	UNIT 36, 1ST FLOOR PLANS	(OFFBELL)
38	UNIT 37, 1ST FLOOR PLANS	(OFFBELL)
39	UNIT 38, 1ST FLOOR PLANS	(OFFBELL)
40	UNIT 39, 1ST FLOOR PLANS	(OFFBELL)
41	UNIT 40, 1ST FLOOR PLANS	(OFFBELL)
42	UNIT 41, 1ST FLOOR PLANS	(OFFBELL)
43	UNIT 42, 1ST FLOOR PLANS	(OFFBELL)
44	UNIT 43, 1ST FLOOR PLANS	(OFFBELL)
45	UNIT 44, 1ST FLOOR PLANS	(OFFBELL)
46	UNIT 45, 1ST FLOOR PLANS	(OFFBELL)
47	UNIT 46, 1ST FLOOR PLANS	(OFFBELL)
48	UNIT 47, 1ST FLOOR PLANS	(OFFBELL)
49	UNIT 48, 1ST FLOOR PLANS	(OFFBELL)
50	UNIT 49, 1ST FLOOR PLANS	(OFFBELL)
51	UNIT 50, 1ST FLOOR PLANS	(OFFBELL)
52	UNIT 51, 1ST FLOOR PLANS	(OFFBELL)
53	UNIT 52, 1ST FLOOR PLANS	(OFFBELL)
54	UNIT 53, 1ST FLOOR PLANS	(OFFBELL)
55	UNIT 54, 1ST FLOOR PLANS	(OFFBELL)
56	UNIT 55, 1ST FLOOR PLANS	(OFFBELL)
57	UNIT 56, 1ST FLOOR PLANS	(OFFBELL)
58	UNIT 57, 1ST FLOOR PLANS	(OFFBELL)
59	UNIT 58, 1ST FLOOR PLANS	(OFFBELL)
60	UNIT 59, 1ST FLOOR PLANS	(OFFBELL)
61	UNIT 60, 1ST FLOOR PLANS	(OFFBELL)
62	UNIT 61, 1ST FLOOR PLANS	(OFFBELL)
63	UNIT 62, 1ST FLOOR PLANS	(OFFBELL)
64	UNIT 63, 1ST FLOOR PLANS	(OFFBELL)
65	UNIT 64, 1ST FLOOR PLANS	(OFFBELL)
66	UNIT 65, 1ST FLOOR PLANS	(OFFBELL)
67	UNIT 66, 1ST FLOOR PLANS	(OFFBELL)
68	UNIT 67, 1ST FLOOR PLANS	(OFFBELL)
69	UNIT 68, 1ST FLOOR PLANS	(OFFBELL)
70	UNIT 69, 1ST FLOOR PLANS	(OFFBELL)
71	UNIT 70, 1ST FLOOR PLANS	(OFFBELL)
72	UNIT 71, 1ST FLOOR PLANS	(OFFBELL)
73	UNIT 72, 1ST FLOOR PLANS	(OFFBELL)
74	UNIT 73, 1ST FLOOR PLANS	(OFFBELL)
75	UNIT 74, 1ST FLOOR PLANS	(OFFBELL)
76	UNIT 75, 1ST FLOOR PLANS	(OFFBELL)
77	UNIT 76, 1ST FLOOR PLANS	(OFFBELL)
78	UNIT 77, 1ST FLOOR PLANS	(OFFBELL)
79	UNIT 78, 1ST FLOOR PLANS	(OFFBELL)
80	UNIT 79, 1ST FLOOR PLANS	(OFFBELL)
81	UNIT 80, 1ST FLOOR PLANS	(OFFBELL)
82	UNIT 81, 1ST FLOOR PLANS	(OFFBELL)
83	UNIT 82, 1ST FLOOR PLANS	(OFFBELL)
84	UNIT 83, 1ST FLOOR PLANS	(OFFBELL)
85	UNIT 84, 1ST FLOOR PLANS	(OFFBELL)
86	UNIT 85, 1ST FLOOR PLANS	(OFFBELL)
87	UNIT 86, 1ST FLOOR PLANS	(OFFBELL)
88	UNIT 87, 1ST FLOOR PLANS	(OFFBELL)
89	UNIT 88, 1ST FLOOR PLANS	(OFFBELL)
90	UNIT 89, 1ST FLOOR PLANS	(OFFBELL)
91	UNIT 90, 1ST FLOOR PLANS	(OFFBELL)
92	UNIT 91, 1ST FLOOR PLANS	(OFFBELL)
93	UNIT 92, 1ST FLOOR PLANS	(OFFBELL)
94	UNIT 93, 1ST FLOOR PLANS	(OFFBELL)
95	UNIT 94, 1ST FLOOR PLANS	(OFFBELL)
96	UNIT 95, 1ST FLOOR PLANS	(OFFBELL)
97	UNIT 96, 1ST FLOOR PLANS	(OFFBELL)
98	UNIT 97, 1ST FLOOR PLANS	(OFFBELL)
99	UNIT 98, 1ST FLOOR PLANS	(OFFBELL)
100	UNIT 99, 1ST FLOOR PLANS	(OFFBELL)
101	UNIT 100, 1ST FLOOR PLANS	(OFFBELL)
102	UNIT 101, 1ST FLOOR PLANS	(OFFBELL)
103	UNIT 102, 1ST FLOOR PLANS	(OFFBELL)
104	UNIT 103, 1ST FLOOR PLANS	(OFFBELL)
105	UNIT 104, 1ST FLOOR PLANS	(OFFBELL)
106	UNIT 105, 1ST FLOOR PLANS	(OFFBELL)
107	UNIT 106, 1ST FLOOR PLANS	(OFFBELL)
108	UNIT 107, 1ST FLOOR PLANS	(OFFBELL)
109	UNIT 108, 1ST FLOOR PLANS	(OFFBELL)
110	UNIT 109, 1ST FLOOR PLANS	(OFFBELL)
111	UNIT 110, 1ST FLOOR PLANS	(OFFBELL)
112	UNIT 111, 1ST FLOOR PLANS	(OFFBELL)
113	UNIT 112, 1ST FLOOR PLANS	(OFFBELL)
114	UNIT 113, 1ST FLOOR PLANS	(OFFBELL)
115	UNIT 114, 1ST FLOOR PLANS	(OFFBELL)
116	UNIT 115, 1ST FLOOR PLANS	(OFFBELL)
117	UNIT 116, 1ST FLOOR PLANS	(OFFBELL)
118	UNIT 117, 1ST FLOOR PLANS	(OFFBELL)
119	UNIT 118, 1ST FLOOR PLANS	(OFFBELL)
120	UNIT 119, 1ST FLOOR PLANS	(OFFBELL)
121	UNIT 120, 1ST FLOOR PLANS	(OFFBELL)
122	UNIT 121, 1ST FLOOR PLANS	(OFFBELL)
123	UNIT 122, 1ST FLOOR PLANS	(OFFBELL)
124	UNIT 123, 1ST FLOOR PLANS	(OFFBELL)
125	UNIT 124, 1ST FLOOR PLANS	(OFFBELL)
126	UNIT 125, 1ST FLOOR PLANS	(OFFBELL)
127	UNIT 126, 1ST FLOOR PLANS	(OFFBELL)
128	UNIT 127, 1ST FLOOR PLANS	(OFFBELL)
129	UNIT 128, 1ST FLOOR PLANS	(OFFBELL)
130	UNIT 129, 1ST FLOOR PLANS	(OFFBELL)
131	UNIT 130, 1ST FLOOR PLANS	(OFFBELL)
132	UNIT 131, 1ST FLOOR PLANS	(OFFBELL)
133	UNIT 132, 1ST FLOOR PLANS	(OFFBELL)
134	UNIT 133, 1ST FLOOR PLANS	(OFFBELL)
135	UNIT 134, 1ST FLOOR PLANS	(OFFBELL)
136	UNIT 135, 1ST FLOOR PLANS	(OFFBELL)
137	UNIT 136, 1ST FLOOR PLANS	(OFFBELL)
138	UNIT 137, 1ST FLOOR PLANS	(OFFBELL)
139	UNIT 138, 1ST FLOOR PLANS	(OFFBELL)
140	UNIT 139, 1ST FLOOR PLANS	(OFFBELL)
141	UNIT 140, 1ST FLOOR PLANS	(OFFBELL)
142	UNIT 141, 1ST FLOOR PLANS	(OFFBELL)
143	UNIT 142, 1ST FLOOR PLANS	(OFFBELL)
144	UNIT 143, 1ST FLOOR PLANS	(OFFBELL)
145	UNIT 144, 1ST FLOOR PLANS	(OFFBELL)
146	UNIT 145, 1ST FLOOR PLANS	(OFFBELL)
147	UNIT 146, 1ST FLOOR PLANS	(OFFBELL)
148	UNIT 147, 1ST FLOOR PLANS	(OFFBELL)
149	UNIT 148, 1ST FLOOR PLANS	(OFFBELL)
150	UNIT 149, 1ST FLOOR PLANS	(OFFBELL)
151	UNIT 150, 1ST FLOOR PLANS	(OFFBELL)
152	UNIT 151, 1ST FLOOR PLANS	(OFFBELL)
153	UNIT 152, 1ST FLOOR PLANS	(OFFBELL)
154	UNIT 153, 1ST FLOOR PLANS	(OFFBELL)
155	UNIT 154, 1ST FLOOR PLANS	(OFFBELL)
156	UNIT 155, 1ST FLOOR PLANS	(OFFBELL)
157	UNIT 156, 1ST FLOOR PLANS	(OFFBELL)
158	UNIT 157, 1ST FLOOR PLANS	(OFFBELL)
159	UNIT 158, 1ST FLOOR PLANS	(OFFBELL)
160	UNIT 159, 1ST FLOOR PLANS	(OFFBELL)
161	UNIT 160, 1ST FLOOR PLANS	(OFFBELL)
162	UNIT 161, 1ST FLOOR PLANS	(OFFBELL)
163	UNIT 162, 1ST FLOOR PLANS	(OFFBELL)
164	UNIT 163, 1ST FLOOR PLANS	(OFFBELL)
165	UNIT 164, 1ST FLOOR PLANS	(OFFBELL)
166	UNIT 165, 1ST FLOOR PLANS	(OFFBELL)
167	UNIT 166, 1ST FLOOR PLANS	(OFFBELL)
168	UNIT 167, 1ST FLOOR PLANS	(OFFBELL)
169	UNIT 168, 1ST FLOOR PLANS	(OFFBELL)
170	UNIT 169, 1ST FLOOR PLANS	(OFFBELL)
171	UNIT 170, 1ST FLOOR PLANS	(OFFBELL)
172	UNIT 171, 1ST FLOOR PLANS	(OFFBELL)
173	UNIT 172, 1ST FLOOR PLANS	(OFFBELL)
174	UNIT 173, 1ST FLOOR PLANS	(OFFBELL)
175	UNIT 174, 1ST FLOOR PLANS	(OFFBELL)
176	UNIT 175, 1ST FLOOR PLANS	(OFFBELL)
177	UNIT 176, 1ST FLOOR PLANS	(OFFBELL)
178	UNIT 177, 1ST FLOOR PLANS	(OFFBELL)
179	UNIT 178, 1ST FLOOR PLANS	(OFFBELL)
180	UNIT 179, 1ST FLOOR PLANS	(OFFBELL)
181	UNIT 180, 1ST FLOOR PLANS	(OFFBELL)
182	UNIT 181, 1ST FLOOR PLANS	(OFFBELL)
183	UNIT 182, 1ST FLOOR PLANS	(OFFBELL)
184	UNIT 183, 1ST FLOOR PLANS	(OFFBELL)
185	UNIT 184, 1ST FLOOR PLANS	(OFFBELL)
186	UNIT 185, 1ST FLOOR PLANS	(OFFBELL)
187	UNIT 186, 1ST FLOOR PLANS	(OFFBELL)
188	UNIT 187, 1ST FLOOR PLANS	(OFFBELL)
189	UNIT 188, 1ST FLOOR PLANS	(OFFBELL)
190	UNIT 189, 1ST FLOOR PLANS	(OFFBELL)
191	UNIT 190, 1ST FLOOR PLANS	(OFFBELL)
192	UNIT 191, 1ST FLOOR PLANS	(OFFBELL)
193	UNIT 192, 1ST FLOOR PLANS	(OFFBELL)
194	UNIT 193, 1ST FLOOR PLANS	(OFFBELL)
195	UNIT 194, 1ST FLOOR PLANS	(OFFBELL)
196	UNIT 195, 1ST FLOOR PLANS	(OFFBELL)
197	UNIT 196, 1ST FLOOR PLANS	(OFFBELL)
198	UNIT 197, 1ST FLOOR PLANS	(OFFBELL)
199	UNIT 198, 1ST FLOOR PLANS	(OFFBELL)
200	UNIT 199, 1ST FLOOR PLANS	(OFFBELL)
201	UNIT 200, 1ST FLOOR PLANS	(OFFBELL)
202	UNIT 201, 1ST FLOOR PLANS	(OFFBELL)
203	UNIT 202, 1ST FLOOR PLANS	(OFFBELL)
204	UNIT 203, 1ST FLOOR PLANS	(OFFBELL)
205	UNIT 204, 1ST FLOOR PLANS	(OFFBELL)
206	UNIT 205, 1ST FLOOR PLANS	(OFFBELL)
207	UNIT 206, 1ST FLOOR PLANS	(OFFBELL)
208	UNIT 207, 1ST FLOOR PLANS	(OFFBELL)
209	UNIT 208, 1ST FLOOR PLANS	(OFFBELL)
210	UNIT 209, 1ST FLOOR PLANS	(OFFBELL)
211	UNIT 210, 1ST FLOOR PLANS	(OFFBELL)
212	UNIT 211, 1ST FLOOR PLANS	(OFFBELL)
213	UNIT 212, 1ST FLOOR PLANS	(OFFBELL)
214	UNIT 213, 1ST FLOOR PLANS	(OFFBELL)
215	UNIT 214, 1ST FLOOR PLANS	(OFFBELL)
216	UNIT 215, 1ST FLOOR PLANS	(OFFBELL)
217	UNIT 216, 1ST FLOOR PLANS	(OFFBELL)
218	UNIT 217, 1ST FLOOR PLANS	(OFFBELL)
219	UNIT 218, 1ST FLOOR PLANS	(OFFBELL)
220	UNIT 219, 1ST FLOOR PLANS	(OFFBELL)
221	UNIT 220, 1ST FLOOR PLANS	(OFFBELL)
222	UNIT 221, 1ST FLOOR PLANS	(OFFBELL)
223	UNIT 222, 1ST FLOOR PLANS	(OFFBELL)
224	UNIT 223, 1ST FLOOR PLANS	(OFFBELL)
225	UNIT 224, 1ST FLOOR PLANS	(OFFBELL)
226	UNIT 225, 1ST FLOOR PLANS	(OFFBELL)
227	UNIT 226, 1ST FLOOR PLANS	(OFFBELL)
228	UNIT 227, 1ST FLOOR PLANS	(OFFBELL)
229	UNIT 228, 1ST FLOOR PLANS	(OFFBELL)
230	UNIT 229, 1ST FLOOR PLANS	(OFFBELL)
231	UNIT 230, 1ST FLOOR PLANS	(OFFBELL)
232	UNIT 231, 1ST FLOOR PLANS	(OFFBELL)
233	UNIT 232, 1ST FLOOR PLANS	(OFFBELL)
234	UNIT 233, 1ST FLOOR PLANS	(OFFBELL)
235	UNIT 234, 1ST FLOOR PLANS	(OFFBELL)
236	UNIT 235, 1ST FLOOR PLANS	(OFFBELL)
237	UNIT 236, 1ST FLOOR PLANS	(OFFBELL)
238	UNIT 237, 1ST FLOOR PLANS	(OFFBELL)
239	UNIT 238, 1ST FLOOR PLANS	(OFFBELL)
240	UNIT 239, 1ST FLOOR PLANS	(OFFBELL)
241	UNIT 240, 1ST FLOOR PLANS	(OFFBELL)
242	UNIT 241, 1ST FLOOR PLANS	(OFFBELL)
243	UNIT 242, 1ST FLOOR PLANS	(OFFBELL)
244	UNIT 243, 1ST FLOOR PLANS	(OFFBELL)
245	UNIT 244, 1ST FLOOR PLANS	(OFFBELL)
246	UNIT 245, 1ST FLOOR PLANS	(OFFBELL)
247	UNIT 246, 1ST FLOOR PLANS	(OFFBELL)
248	UNIT 247, 1ST FLOOR PLANS	(OFFBELL)
249	UNIT 248, 1ST FLOOR PLANS	(OFFBELL)
250	UNIT 249, 1ST FLOOR PLANS	(OFFBELL)
251	UNIT 250, 1ST FLOOR PLANS	(OFFBELL)
252	UNIT 251, 1ST FLOOR PLANS	(OFFBELL)
253	UNIT 252, 1ST FLOOR PLANS	(OFFBELL)
254	UNIT 253, 1ST FLOOR PLANS	(OFFBELL)
255	UNIT 254, 1ST FLOOR PLANS	(OFFBELL)
256	UNIT 255, 1ST FLOOR PLANS	(OFFBELL)
257	UNIT 256, 1ST FLOOR PLANS	(OFFBELL)
258	UNIT 257, 1ST FLOOR PLANS	(OFFBELL)
259	UNIT 258, 1ST FLOOR PLANS	(OFFBELL)
260	UNIT 259, 1ST FLOOR PLANS	(OFFBELL)
261	UNIT 260, 1ST FLOOR PLANS	(OFFBELL)
262	UNIT 261, 1ST FLOOR PLANS	(OFFBELL)
263	UNIT 262, 1ST FLOOR PLANS	(OFFBELL)
264	UNIT 263, 1ST FLOOR PLANS	(OFFBELL)
265	UNIT 264, 1ST FLOOR PLANS	(OFFBELL)
266	UNIT 265, 1ST FLOOR PLANS	(OFFBELL)
267	UNIT 266, 1ST FLOOR PLANS	(OFFBELL)
268	UNIT 267, 1ST FLOOR PLANS	(OFFBELL)
269	UNIT 268, 1ST FLOOR PLANS	(OFFBELL)
270	UNIT 269, 1ST FLOOR PLANS	(OFFBELL)
271	UNIT 270, 1ST FLOOR PLANS	(OFFBELL)
272	UNIT 271, 1ST FLOOR PLANS	(OFFBELL)
273	UNIT 272, 1ST FLOOR PLANS	(OFFBELL)
274	UNIT 273, 1ST FLOOR PLANS	(OFFBELL)
275	UNIT 274, 1ST FLOOR PLANS	(OFFBELL)
276	UNIT 275, 1ST FLOOR PLANS	(OFFBELL)
277	UNIT 276, 1ST FLOOR PLANS	(OFFBELL)
278	UNIT 277, 1ST FLOOR PLANS	(OFFBELL)
279	UNIT 278, 1ST FLOOR PLANS	(OFFBELL)
280	UNIT 279, 1ST FLOOR PLANS	(OFFBELL)
281	UNIT 280, 1ST FLOOR PLANS	(OFFBELL)
282	UNIT 281, 1ST FLOOR PLANS	(OFFBELL)
283	UNIT 282, 1ST FLOOR PLANS	(OFFBELL)
284	UNIT 283, 1ST FLOOR PLANS	(OFFBELL)
285	UNIT 284, 1ST FLOOR PLANS	(OFFBELL)
286	UNIT 285, 1ST FLOOR PLANS	(OFFBELL)
287	UNIT 286, 1ST FLOOR PLANS	(OFFBELL)
288	UNIT 287, 1ST FLOOR PLANS	(OFFBELL)
289	UNIT 288, 1ST FLOOR PLANS	(OFFBELL)
290	UNIT 289, 1ST FLOOR PLANS	(OFFBELL)
291	UNIT 290, 1ST FLOOR PLANS	(OFFBELL)
292	UNIT 291, 1ST FLOOR PLANS	(OFFBELL)
293	UNIT 292, 1ST FLOOR PLANS	(OFFBELL)
294	UNIT 293, 1ST FLOOR PLANS	(OFFBELL)
295	UNIT 294, 1ST FLOOR PLANS	(OFFBELL)
296	UNIT 295, 1ST FLOOR PLANS	(OFFBELL)
297	UNIT 296, 1ST FLOOR PLANS	(OFFBELL)
298	UNIT 297, 1ST FLOOR PLANS	(OFFBELL)
299	UNIT 298, 1ST FLOOR PLANS	(OFFBELL)
300	UNIT 299, 1ST FLOOR PLANS	(OFFBELL)
301	UNIT 300, 1ST FLOOR PLANS	(OFFBELL)
302	UNIT 301, 1ST FLOOR PLANS	(OFFBELL)
303	UNIT 302, 1ST FLOOR PLANS	(OFFBELL)
304	UNIT 303, 1ST FLOOR PLANS	(OFFBELL)
305	UNIT 304, 1ST FLOOR PLANS	(OFFBELL)
306	UNIT 305, 1ST FLOOR PLANS	(OFFBELL)
307	UNIT 306, 1ST FLOOR PLANS	(OFFBELL)
308	UNIT 307, 1ST FLOOR PLANS	(OFFBELL)
309	UNIT 308, 1ST FLOOR PLANS	(OFFBELL)
310	UNIT 309, 1ST FLOOR PLANS	(OFFBELL)
311	UNIT 310, 1ST FLOOR PLANS	(OFFBELL)
312	UNIT 311, 1ST FLOOR PLANS	(OFFBELL)
313	UNIT 312, 1ST FLOOR PLANS	(OFFBELL)
314	UNIT 313, 1ST FLOOR PLANS	(OFFBELL)
315	UNIT 314, 1ST FLOOR PLANS	(OFFBELL)
316	UNIT 315, 1ST FLOOR PLANS	(OFFBELL)
317	UNIT 316, 1ST FLOOR PLANS	(OFFBELL)
318	UNIT 317, 1ST FLOOR PLANS	(OFFBELL)
319	UNIT 318, 1ST FLOOR PLANS	(OFFBELL)
320	UNIT 319, 1ST FLOOR PLANS	(OFFBELL)
321	UNIT 320, 1ST FLOOR PLANS	(OFFBELL)
322	UNIT 321, 1ST FLOOR PLANS	(OFFBELL)
323	UNIT 322, 1ST FLOOR PLANS	(OFFBELL)
324	UNIT 323, 1ST FLOOR PLANS	(OFFBELL)
325	UNIT 324, 1ST FLOOR PLANS	(OFFBELL)
326	UNIT 325, 1ST FLOOR PLANS	(OFFBELL)
327	UNIT 326, 1ST FLOOR PLANS	(OFFBELL)
328	UNIT 327, 1ST FLOOR PLANS	(OFFBELL)
329	UNIT 328, 1ST FLOOR PLANS	(OFFBELL)
330	UNIT 329, 1ST FLOOR PLANS	(OFFBELL)
331	UNIT 330, 1ST FLOOR PLANS	(OFFBELL)
332	UNIT 331,	

[illegible]

5-1	UNIT A - FOUNDATION PLAN
5-2	UNIT B - FOUNDATION PLAN
5-3	UNIT C - FOUNDATION PLAN
5-4	UNIT D - FOUNDATION PLAN
5-5	UNIT E - FOUNDATION PLAN
5-6	UNIT F - FOUNDATION PLAN
5-7	UNIT G - FOUNDATION PLAN
5-8	UNIT H - FOUNDATION PLAN
5-9	UNIT I - FOUNDATION PLAN
5-10	UNIT J - FOUNDATION PLAN
5-11	UNIT K - FOUNDATION PLAN
5-12	UNIT L - FOUNDATION PLAN
5-13	UNIT M - FOUNDATION PLAN
5-14	UNIT N - FOUNDATION PLAN
5-15	UNIT O - FOUNDATION PLAN
5-16	UNIT P - FOUNDATION PLAN
5-17	UNIT Q - FOUNDATION PLAN
5-18	UNIT R - FOUNDATION PLAN
5-19	UNIT S - FOUNDATION PLAN
5-20	UNIT T - FOUNDATION PLAN
5-21	UNIT U - FOUNDATION PLAN
5-22	UNIT V - FOUNDATION PLAN
5-23	UNIT W - FOUNDATION PLAN
5-24	UNIT X - FOUNDATION PLAN
5-25	UNIT Y - FOUNDATION PLAN
5-26	UNIT Z - FOUNDATION PLAN
5-27	UNIT AA - FOUNDATION PLAN
5-28	UNIT AB - FOUNDATION PLAN
5-29	UNIT AC - FOUNDATION PLAN
5-30	UNIT AD - FOUNDATION PLAN
5-31	UNIT AE - FOUNDATION PLAN
5-32	UNIT AF - FOUNDATION PLAN
5-33	UNIT AG - FOUNDATION PLAN
5-34	UNIT AH - FOUNDATION PLAN
5-35	UNIT AI - FOUNDATION PLAN
5-36	UNIT AJ - FOUNDATION PLAN
5-37	UNIT AK - FOUNDATION PLAN
5-38	UNIT AL - FOUNDATION PLAN
5-39	UNIT AM - FOUNDATION PLAN
5-40	UNIT AN - FOUNDATION PLAN
5-41	UNIT AO - FOUNDATION PLAN
5-42	UNIT AP - FOUNDATION PLAN
5-43	UNIT AQ - FOUNDATION PLAN
5-44	UNIT AR - FOUNDATION PLAN
5-45	UNIT AS - FOUNDATION PLAN
5-46	UNIT AT - FOUNDATION PLAN
5-47	UNIT AU - FOUNDATION PLAN
5-48	UNIT AV - FOUNDATION PLAN
5-49	UNIT AW - FOUNDATION PLAN
5-50	UNIT AX - FOUNDATION PLAN
5-51	UNIT AY - FOUNDATION PLAN
5-52	UNIT AZ - FOUNDATION PLAN
5-53	UNIT BA - FOUNDATION PLAN
5-54	UNIT BB - FOUNDATION PLAN
5-55	UNIT BC - FOUNDATION PLAN
5-56	UNIT BD - FOUNDATION PLAN
5-57	UNIT BE - FOUNDATION PLAN
5-58	UNIT BF - FOUNDATION PLAN
5-59	UNIT BG - FOUNDATION PLAN
5-60	UNIT BH - FOUNDATION PLAN
5-61	UNIT BI - FOUNDATION PLAN
5-62	UNIT BJ - FOUNDATION PLAN
5-63	UNIT BK - FOUNDATION PLAN
5-64	UNIT BL - FOUNDATION PLAN
5-65	UNIT BM - FOUNDATION PLAN
5-66	UNIT BN - FOUNDATION PLAN
5-67	UNIT BO - FOUNDATION PLAN
5-68	UNIT BP - FOUNDATION PLAN
5-69	UNIT BQ - FOUNDATION PLAN
5-70	UNIT BR - FOUNDATION PLAN
5-71	UNIT BS - FOUNDATION PLAN
5-72	UNIT BT - FOUNDATION PLAN
5-73	UNIT BU - FOUNDATION PLAN
5-74	UNIT BV - FOUNDATION PLAN
5-75	UNIT BW - FOUNDATION PLAN
5-76	UNIT BX - FOUNDATION PLAN
5-77	UNIT BY - FOUNDATION PLAN
5-78	UNIT BZ - FOUNDATION PLAN
5-79	UNIT CA - FOUNDATION PLAN
5-80	UNIT CB - FOUNDATION PLAN
5-81	UNIT CC - FOUNDATION PLAN
5-82	UNIT CD - FOUNDATION PLAN
5-83	UNIT CE - FOUNDATION PLAN
5-84	UNIT CF - FOUNDATION PLAN
5-85	UNIT CG - FOUNDATION PLAN
5-86	UNIT CH - FOUNDATION PLAN
5-87	UNIT CI - FOUNDATION PLAN
5-88	UNIT CJ - FOUNDATION PLAN
5-89	UNIT CK - FOUNDATION PLAN
5-90	UNIT CL - FOUNDATION PLAN
5-91	UNIT CM - FOUNDATION PLAN
5-92	UNIT CN - FOUNDATION PLAN
5-93	UNIT CO - FOUNDATION PLAN
5-94	UNIT CP - FOUNDATION PLAN
5-95	UNIT CQ - FOUNDATION PLAN
5-96	UNIT CR - FOUNDATION PLAN
5-97	UNIT CS - FOUNDATION PLAN
5-98	UNIT CT - FOUNDATION PLAN
5-99	UNIT CU - FOUNDATION PLAN
5-100	UNIT CV - FOUNDATION PLAN
5-101	UNIT CW - FOUNDATION PLAN
5-102	UNIT CX - FOUNDATION PLAN
5-103	UNIT CY - FOUNDATION PLAN
5-104	UNIT CZ - FOUNDATION PLAN
5-105	UNIT DA - FOUNDATION PLAN
5-106	UNIT DB - FOUNDATION PLAN
5-107	UNIT DC - FOUNDATION PLAN
5-108	UNIT DD - FOUNDATION PLAN
5-109	UNIT DE - FOUNDATION PLAN
5-110	UNIT DF - FOUNDATION PLAN
5-111	UNIT DG - FOUNDATION PLAN
5-112	UNIT DH - FOUNDATION PLAN
5-113	UNIT DI - FOUNDATION PLAN
5-114	UNIT DJ - FOUNDATION PLAN
5-115	UNIT DK - FOUNDATION PLAN
5-116	UNIT DL - FOUNDATION PLAN
5-117	UNIT DM - FOUNDATION PLAN
5-118	UNIT DN - FOUNDATION PLAN
5-119	UNIT DO - FOUNDATION PLAN
5-120	UNIT DP - FOUNDATION PLAN
5-121	UNIT DQ - FOUNDATION PLAN
5-122	UNIT DR - FOUNDATION PLAN
5-123	UNIT DS - FOUNDATION PLAN
5-124	UNIT DT - FOUNDATION PLAN
5-125	UNIT DU - FOUNDATION PLAN
5-126	UNIT DV - FOUNDATION PLAN
5-127	UNIT DW - FOUNDATION PLAN
5-128	UNIT DX - FOUNDATION PLAN
5-129	UNIT DY - FOUNDATION PLAN
5-130	UNIT DZ - FOUNDATION PLAN
5-131	UNIT EA - FOUNDATION PLAN
5-132	UNIT EB - FOUNDATION PLAN
5-133	UNIT EC - FOUNDATION PLAN
5-134	UNIT ED - FOUNDATION PLAN
5-135	UNIT EE - FOUNDATION PLAN
5-136	UNIT EF - FOUNDATION PLAN
5-137	UNIT EG - FOUNDATION PLAN
5-138	UNIT EH - FOUNDATION PLAN
5-139	UNIT EI - FOUNDATION PLAN
5-140	UNIT EJ - FOUNDATION PLAN</

[illegible]

ME-1
ME-2
ME-3
ME-4
ME-5
ME-6
ME-7
ME-8

[illegible]

NO. (USED)	ROOM	RVAC PLANS	SECTIONS
H-29	MECHANICAL ROOM	RVAC PLANS	SECTIONS
H-30	MECHANICAL ROOM	RVAC PLANS	SECTIONS
H-31	MECHANICAL ROOM	RVAC PLANS	SECTIONS
H-32	MECHANICAL ROOM	RVAC PLANS	SECTIONS
H-33	MECHANICAL ROOM	RVAC PLANS	SECTIONS
H-34	MECHANICAL ROOM	RVAC PLANS	SECTIONS
H-35	MECHANICAL ROOM	RVAC PLANS	SECTIONS
H-36	MECHANICAL ROOM	RVAC PLANS	SECTIONS
H-37*	FITTING SUBMATECS & DETAILS		
H-38*	FITTING SUBMATECS & DETAILS		
H-39*	FITTING SUBMATECS & DETAILS		
H-40*	FITTING SUBMATECS & DETAILS		
H-41	RVAC SCHEDULES & DETAILS		

EVAL DETAILS	
ME-1	MECHANICAL/ELECTRICAL SCHEDULES
ME-2	MECHANICAL/ELECTRICAL SCHEDULES
ME-3	MECHANICAL/ELECTRICAL SCHEDULES
ME-4	MECHANICAL/ELECTRICAL SCHEDULES
ME-5	MECHANICAL/ELECTRICAL SCHEDULES
ME-6	MECHANICAL/ELECTRICAL SCHEDULES
ME-7	MECHANICAL/ELECTRICAL SCHEDULES
ME-8	MECHANICAL/ELECTRICAL SCHEDULES

[illegible]

LIGHTING/FIRE PRO

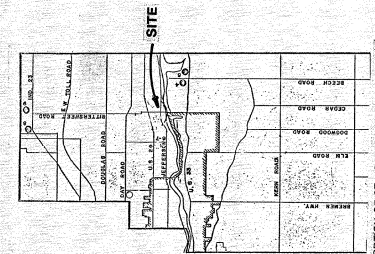
[illegible][illegible]

STAGE LIGHTING

	SL-1	SL-2	SL-3	SL-4	SL-5
STAGE LIGHTING IDENTIFICATION					
STAGE LIGHTING INSTRUMENT					
STAGE LIGHTING DIMMANT					
L.C.A. - STAGE LIGHTING SYSTEM					

SOUND SYSTEM

	SS-1	SS-2	SS-3	SS-4	SS-5
AUTO MIXING FUNCTIONAL DIAGRAM					
LCA #1 AND COMBASTER #1 FUNCTIONAL DIAGRAM					
COMBASTER #2 AND COMBASTER #3 FUNCTIONAL DIAGRAM					
SOUND SYSTEM DETAILS					
SOUND SYSTEM DETAILS					



LOCATION PLAN

BENCHMARKS

- BM #1 CROSS CUT INTO TOP OF CONCRETE CURB AT STATION 100+13.8 AND STATION 100+05.8 *VERTICAL ELEVATION 747.25
- BM #2 NORTHEAST CORNER OF CONCRETE PERMANENT FOR LIGHT STANDARD AT STATION 100+40.8 AND STATION 100+50.8 *VERTICAL ELEVATION 746.75
- BM #3 CROSS CUT INTO CONCRETE WALL AT STATION 100+00.8 AND STATION 100+10.8 *VERTICAL ELEVATION 747.25
- BM #4 CROSS CUT INTO TOP OF CONCRETE CURB AT STATION 111+27.8 AND STATION 100+50.8 *VERTICAL ELEVATION 747.25

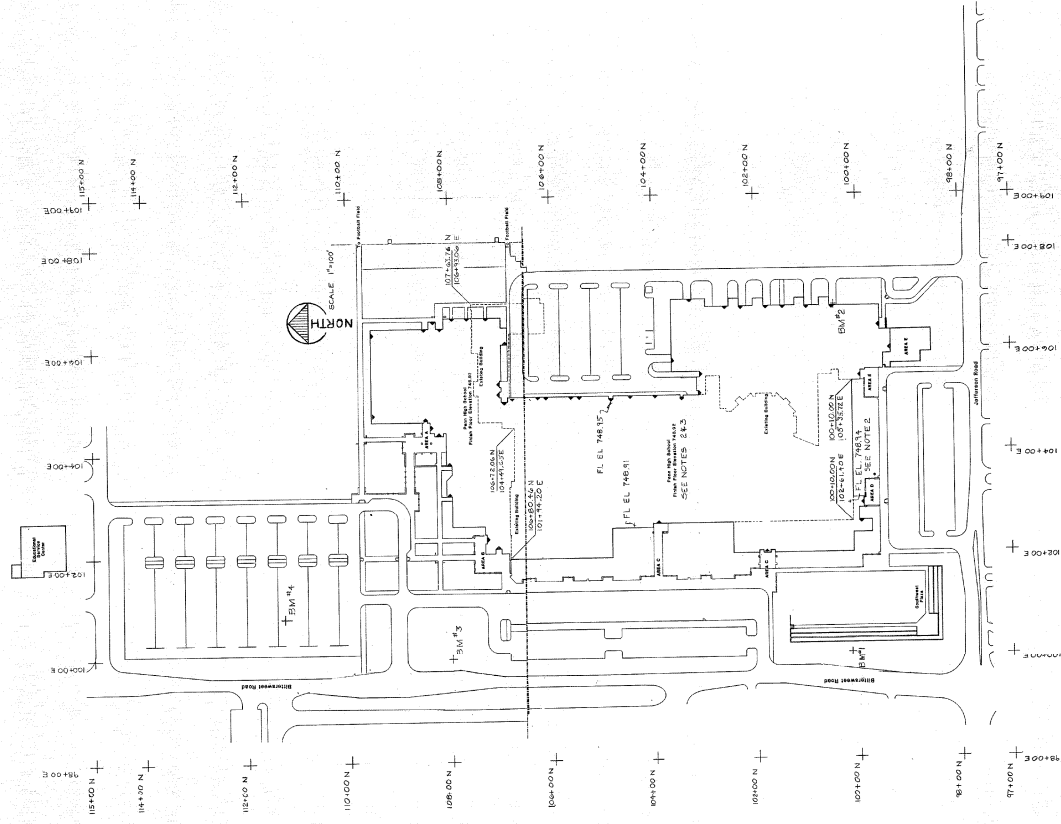
BID ALTERNATES IN PARAGRAPHS

1. DELETE ALL EXISTING CURBS ALONG RTHMOUNT, EXCEPT IN 7 TRAFFIC LANEWAYS ON RTHMOUNT. EXIST. ADJUST CURB AND FINISHING STRUCTURE ELEVATION TO CONFORM.
2. DELETE 42 CAR PARKING LOT LOCATED FROM 102+12.5 TO 104+14.8 EAST, AND FROM 100+00.8 TO 100+10.8 NORTH, AND ASSOCIATED SANITARY MANHOLE. GRADE DIFFERENCE FROM THE CURB AT 94.83 TO EXISTING GRADE AT PROPERTY LINE.
3. DELETE THE CURB AND GUTTER, AND ASSOCIATED SANITARY MANHOLE ADJACENT TO EXISTING RTHMOUNT. CURB AND GUTTER ALONG DECELERATION LANE ARE NOT TO BE DELETED.
4. DELETE TRUCK RECEIVING (14) AS SHOWN ON DRAWINGS.
5. DELETE ALL EXISTING CURBS ALONG RTHMOUNT, EXCEPT IN 7 TRAFFIC LANEWAYS ON RTHMOUNT. EXIST. ADJUST CURB AND FINISHING STRUCTURE ELEVATION TO CONFORM.
6. ADD IMPAVEMENT OF PAVED LOT LOCATED FROM 100+10.8 TO 110+40.8 EAST, AND FROM 100+00.8 TO 100+10.8 NORTH.
7. REMOVE EXISTING CURBS ALONG RTHMOUNT AT 100+10.8 EAST, FROM 100+40.8 TO 100+50.8 NORTH. EXISTENCE WITH 1" OF HOT ASPHALT BEDDING TO EXISTING 100+50.8 NORTH.
8. ADD FREE STANDING CURBS AT 104+10.8 EAST, 109+70.8 NORTH, AND 100+00.8 EAST, 100+10.8 NORTH.
9. DELETE ALL EXISTING CURBS ALONG RTHMOUNT, EXCEPT IN 7 TRAFFIC LANEWAYS ON RTHMOUNT. EXIST. ADJUST CURB AND FINISHING STRUCTURE ELEVATION TO CONFORM.

GENERAL NOTE

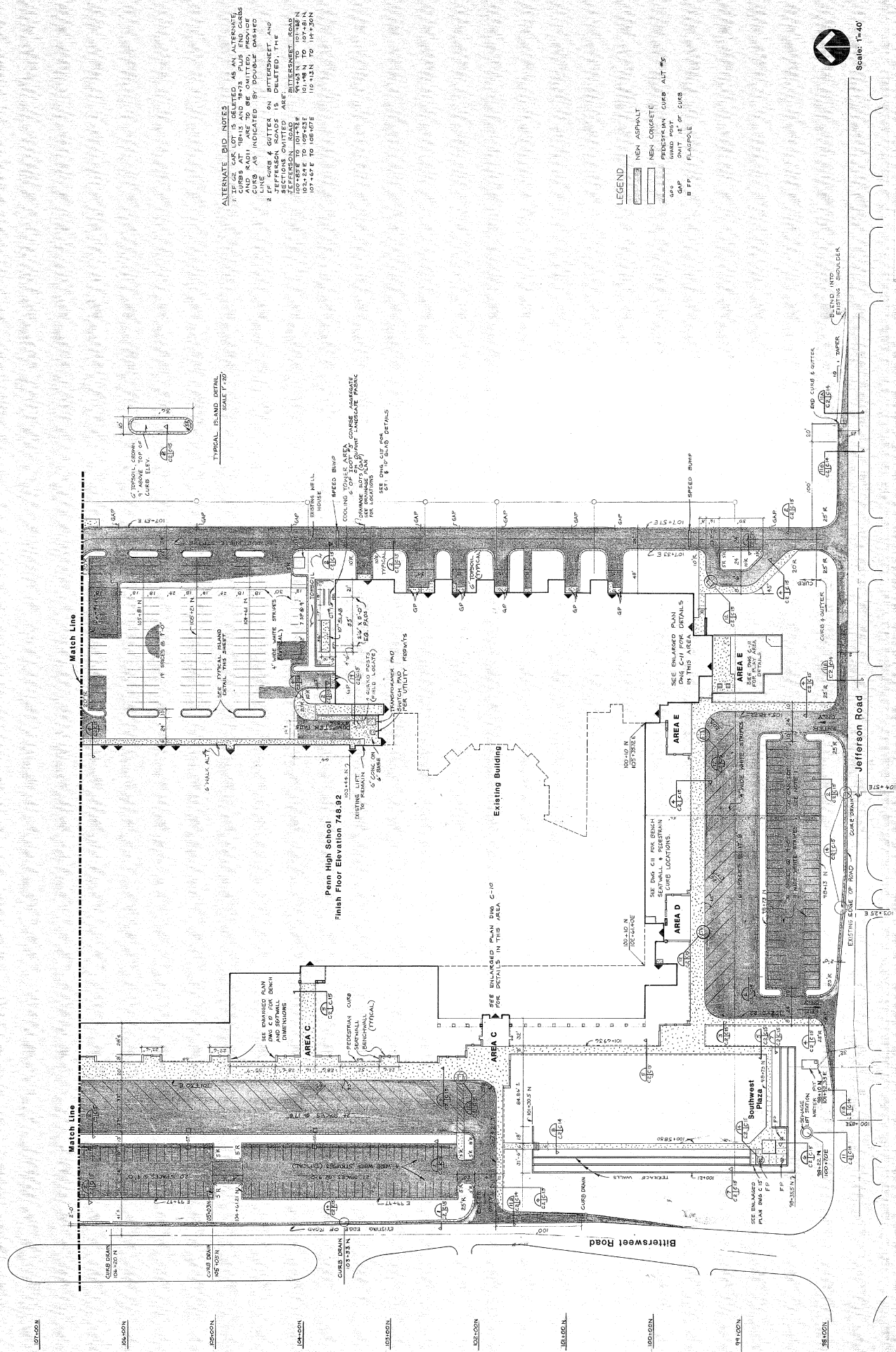
1. EXISTING ELEVATIONS AND NEW MARKS ARE SHOWN ON THE DRAWINGS. THESE POINTS WILL BE REFERRED TO BY THE LOCATION OF THE MARKS. CONTRACTORS SHALL VERIFY THE ELEVATIONS AND MARKS BEFORE BEGINNING CONSTRUCTION. ANY DISCREPANCIES SHALL BE REPORTED TO THE ENGINEER IMMEDIATELY.
2. EXISTING FLOOR ELEVATIONS AT INTERSECTIONS ARE SHOWN ON THE DRAWINGS. BUILDING ELEVATIONS SHALL BE SHOWN ON THE DRAWINGS. BUILDING ELEVATIONS SHALL BE SHOWN ON THE DRAWINGS. BUILDING ELEVATIONS SHALL BE SHOWN ON THE DRAWINGS.
3. CIVIL AND PLUMBING DRAWINGS ARE REFERENCED TO THE CIVIL AND PLUMBING DRAWINGS.
4. SEE DIVISION 2 OF SPECIFICATIONS FOR SOIL INFORMATION.

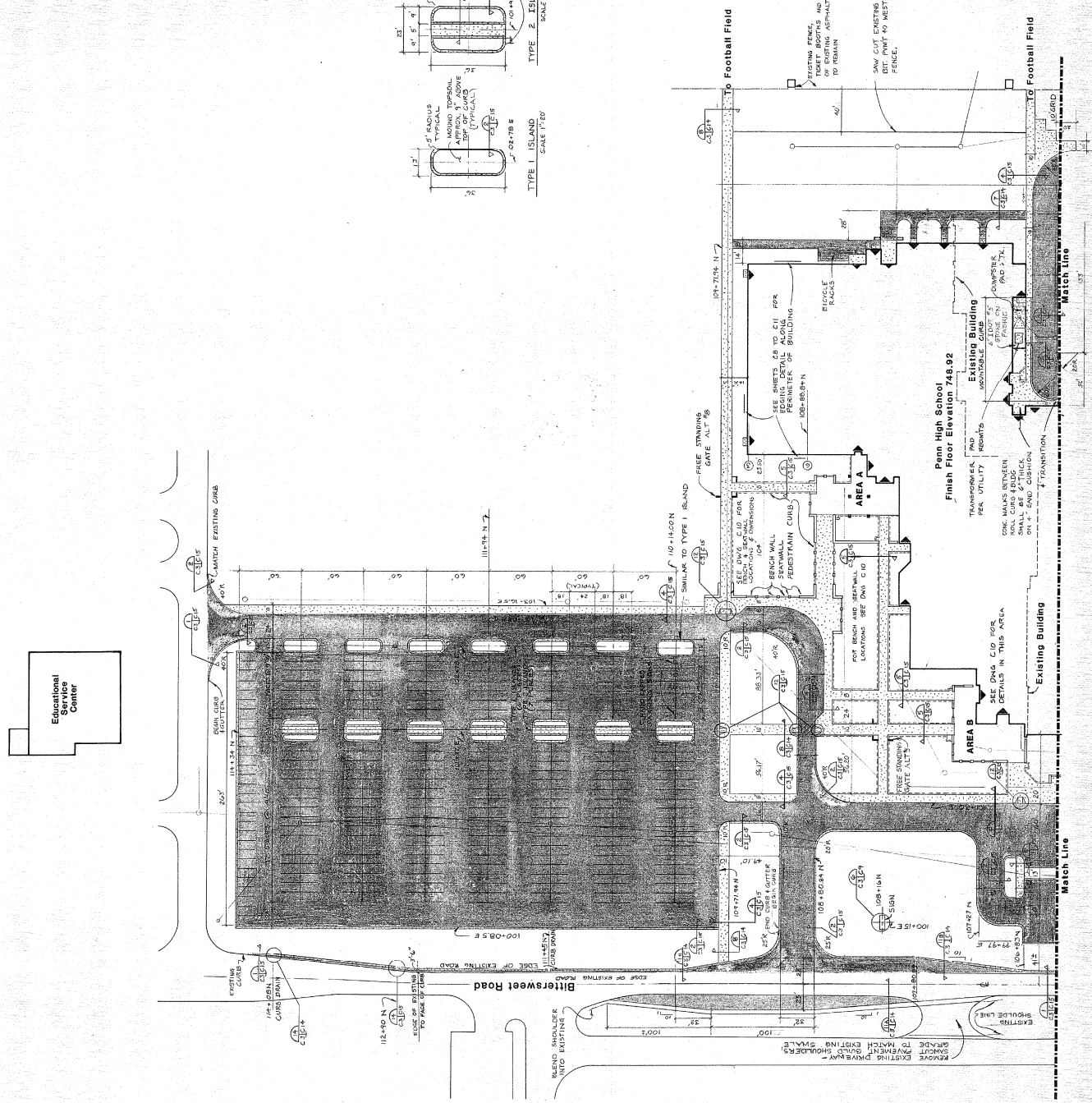
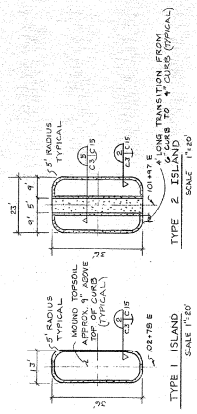
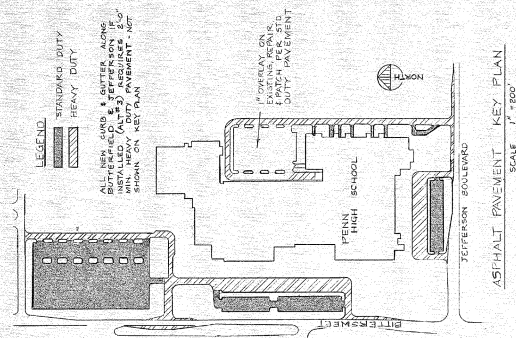
BEFORE YOU DIG CALL
INDIANA UNDERGROUND PLANT PROTECTION
1-800-382-3594



SITE PLAN

SCALE 1"=50'



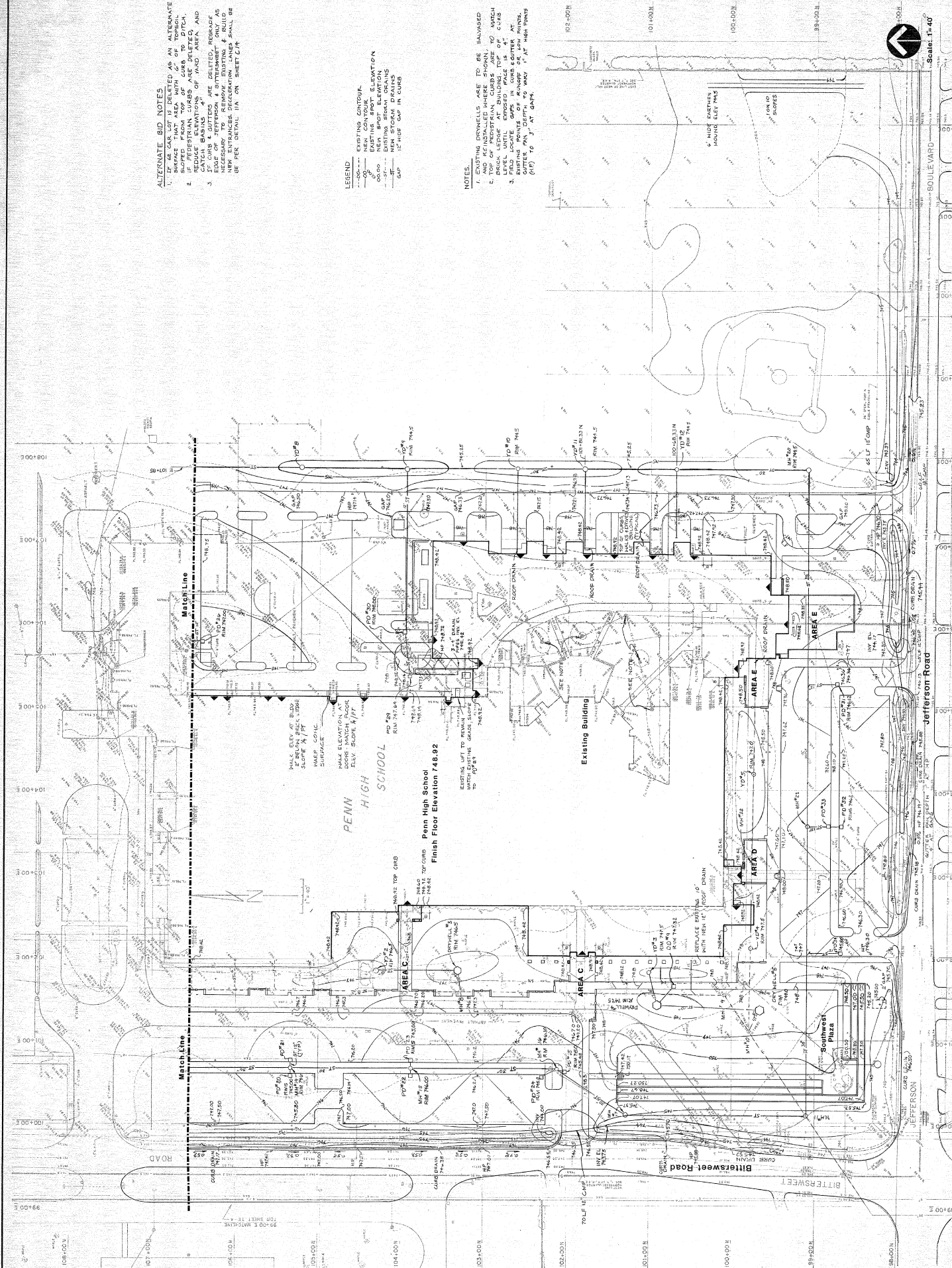


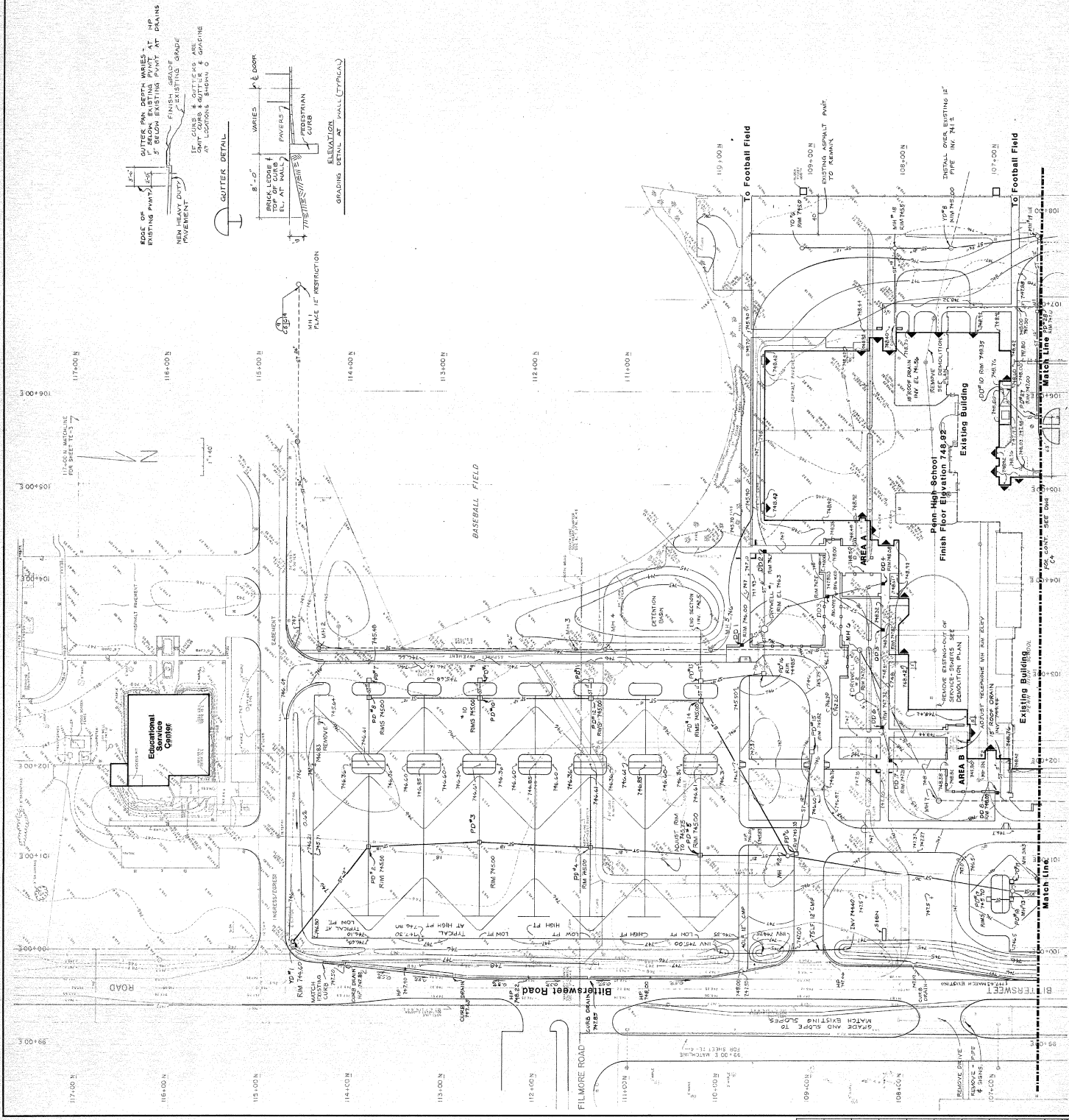
NO.	DESCRIPTION	DATE
1	REVISION	
2	REVISION	
3	REVISION	
4	REVISION	
5	REVISION	
6	REVISION	
7	REVISION	
8	REVISION	
9	REVISION	
10	REVISION	

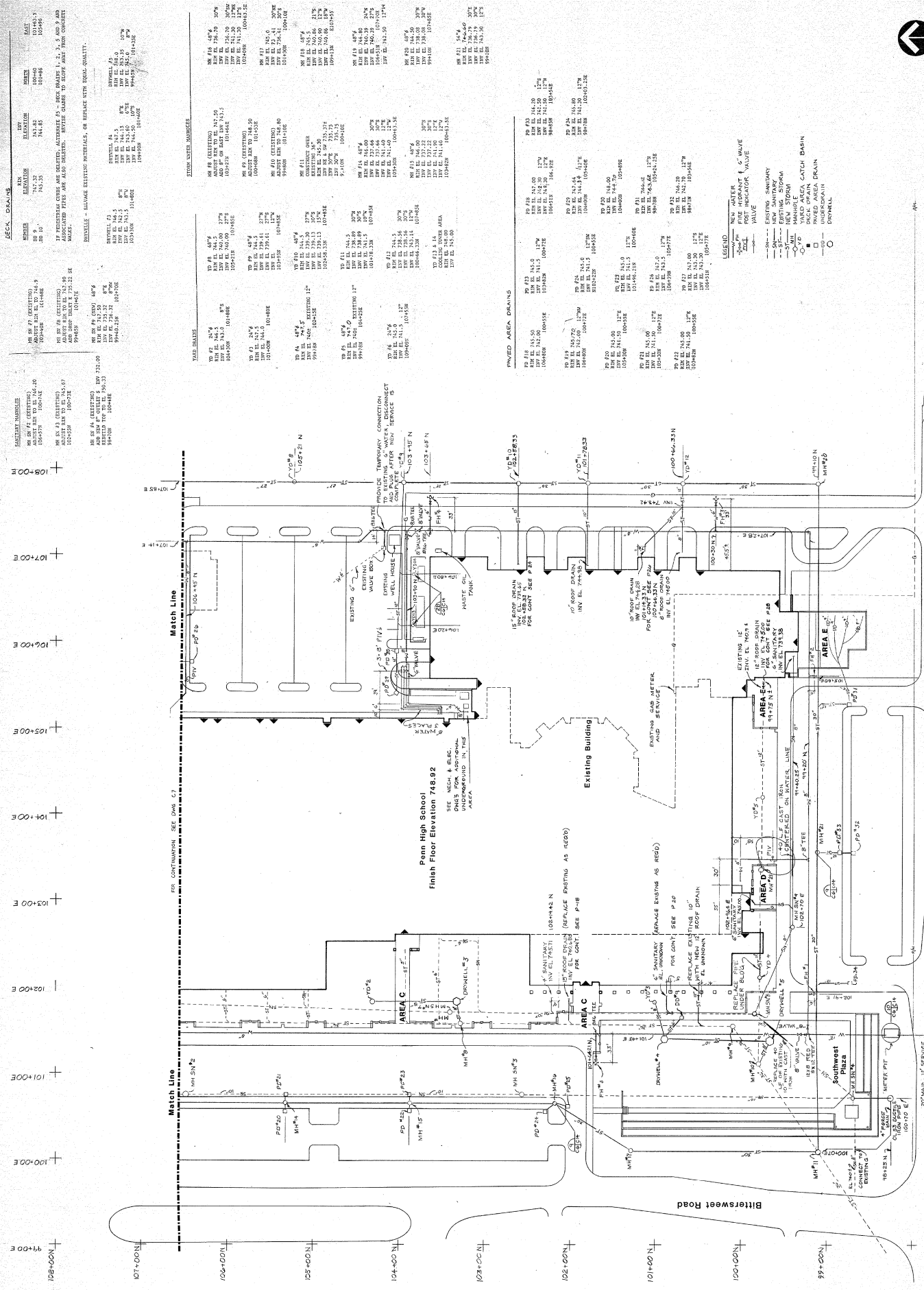
ALTERNATE BID NOTES
 1. EXISTING GRADE TO BE MAINTAINED AS AN INTERMEDIATE GRADE.
 2. SLOPE FROM TOP OF CURB TO DITCH.
 3. REDUCE ELEVATIONS OF ROAD AREA AND
 4. SLOPE GRASSY AREAS TO MATCH EXISTING GRADE.
 5. EXISTING GRADES ARE DELETED, REMOVED
 6. EDGE OF JEFFERSON & INTERSECT ONLY AS
 7. NEW ENTRANCES DISCUSSION LINES SHALL BE
 8. SEE PER DETAIL 11A ON SHEET C/H

LEGEND
 --- EXISTING CONTOUR
 --- NEW CONTOUR
 --- NEW SPOT ELEVATION
 --- EXISTING STREAM DRAIN
 --- NEW STREAM DRAIN
 --- 12" HOB GUT IN CURB

NOTES
 1. EXISTING MANHOLE IS TO BE REMOVED
 2. AND REINSTALLED WHERE SHOWN TO MATCH
 3. TOP OF FLOOR GRADE. CURBS ARE TO MATCH
 4. EXISTING GRADE. EXISTING CURB IS 4"
 5. LEVEL UNTIL EXPOSED PALE IS 4"
 6. FIELD LOCATE GAPS IN CURB & CUTTER AT
 7. CUTTER 1/2" DEPTH TO MATCH 1" AT HIGH POINTS
 8. (1/2" TO 3" AT GAPS)

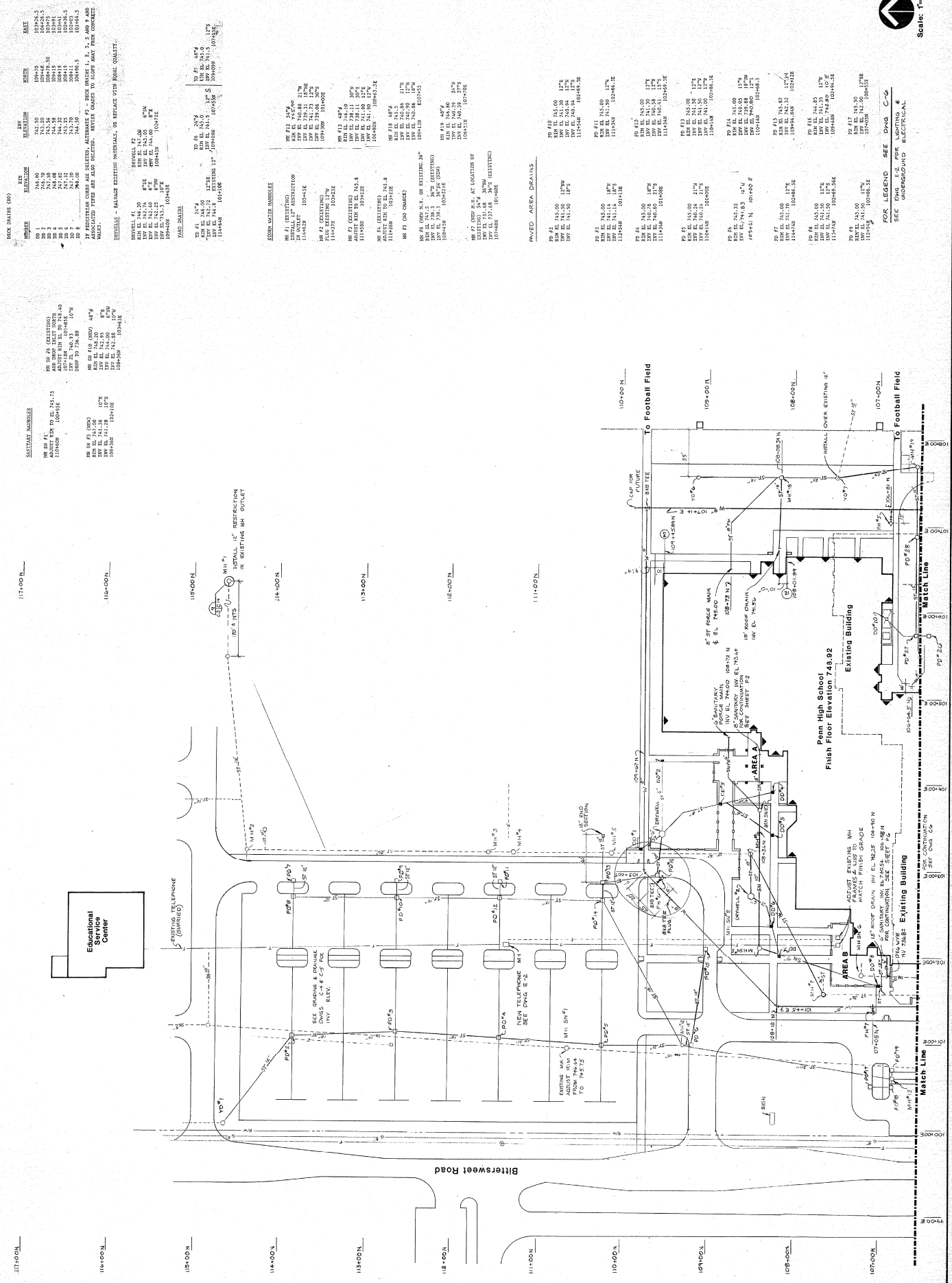








DR. A.D.	TR. A.D.	CK.	APP.	IN CHARGE



DECK DRAINS (DD)

NO.	LOCATION	SIZE	DEPTH	INVERT	NOTE
DD 1	100+00.0	18"	12"	742.50	100+00.0
DD 2	100+00.0	18"	12"	742.50	100+00.0
DD 3	100+00.0	18"	12"	742.50	100+00.0
DD 4	100+00.0	18"	12"	742.50	100+00.0
DD 5	100+00.0	18"	12"	742.50	100+00.0
DD 6	100+00.0	18"	12"	742.50	100+00.0
DD 7	100+00.0	18"	12"	742.50	100+00.0
DD 8	100+00.0	18"	12"	742.50	100+00.0
DD 9	100+00.0	18"	12"	742.50	100+00.0
DD 10	100+00.0	18"	12"	742.50	100+00.0

DECK DRAINS (DD)

NO.	LOCATION	SIZE	DEPTH	INVERT	NOTE
DD 11	100+00.0	18"	12"	742.50	100+00.0
DD 12	100+00.0	18"	12"	742.50	100+00.0
DD 13	100+00.0	18"	12"	742.50	100+00.0
DD 14	100+00.0	18"	12"	742.50	100+00.0
DD 15	100+00.0	18"	12"	742.50	100+00.0
DD 16	100+00.0	18"	12"	742.50	100+00.0
DD 17	100+00.0	18"	12"	742.50	100+00.0
DD 18	100+00.0	18"	12"	742.50	100+00.0
DD 19	100+00.0	18"	12"	742.50	100+00.0
DD 20	100+00.0	18"	12"	742.50	100+00.0

DECK DRAINS (DD)

NO.	LOCATION	SIZE	DEPTH	INVERT	NOTE
DD 21	100+00.0	18"	12"	742.50	100+00.0
DD 22	100+00.0	18"	12"	742.50	100+00.0
DD 23	100+00.0	18"	12"	742.50	100+00.0
DD 24	100+00.0	18"	12"	742.50	100+00.0
DD 25	100+00.0	18"	12"	742.50	100+00.0
DD 26	100+00.0	18"	12"	742.50	100+00.0
DD 27	100+00.0	18"	12"	742.50	100+00.0
DD 28	100+00.0	18"	12"	742.50	100+00.0
DD 29	100+00.0	18"	12"	742.50	100+00.0
DD 30	100+00.0	18"	12"	742.50	100+00.0

DECK DRAINS (DD)

NO.	LOCATION	SIZE	DEPTH	INVERT	NOTE
DD 31	100+00.0	18"	12"	742.50	100+00.0
DD 32	100+00.0	18"	12"	742.50	100+00.0
DD 33	100+00.0	18"	12"	742.50	100+00.0
DD 34	100+00.0	18"	12"	742.50	100+00.0
DD 35	100+00.0	18"	12"	742.50	100+00.0
DD 36	100+00.0	18"	12"	742.50	100+00.0
DD 37	100+00.0	18"	12"	742.50	100+00.0
DD 38	100+00.0	18"	12"	742.50	100+00.0
DD 39	100+00.0	18"	12"	742.50	100+00.0
DD 40	100+00.0	18"	12"	742.50	100+00.0

DECK DRAINS (DD)

NO.	LOCATION	SIZE	DEPTH	INVERT	NOTE
DD 41	100+00.0	18"	12"	742.50	100+00.0
DD 42	100+00.0	18"	12"	742.50	100+00.0
DD 43	100+00.0	18"	12"	742.50	100+00.0
DD 44	100+00.0	18"	12"	742.50	100+00.0
DD 45	100+00.0	18"	12"	742.50	100+00.0
DD 46	100+00.0	18"	12"	742.50	100+00.0
DD 47	100+00.0	18"	12"	742.50	100+00.0
DD 48	100+00.0	18"	12"	742.50	100+00.0
DD 49	100+00.0	18"	12"	742.50	100+00.0
DD 50	100+00.0	18"	12"	742.50	100+00.0

DECK DRAINS (DD)

NO.	LOCATION	SIZE	DEPTH	INVERT	NOTE
DD 51	100+00.0	18"	12"	742.50	100+00.0
DD 52	100+00.0	18"	12"	742.50	100+00.0
DD 53	100+00.0	18"	12"	742.50	100+00.0
DD 54	100+00.0	18"	12"	742.50	100+00.0
DD 55	100+00.0	18"	12"	742.50	100+00.0
DD 56	100+00.0	18"	12"	742.50	100+00.0
DD 57	100+00.0	18"	12"	742.50	100+00.0
DD 58	100+00.0	18"	12"	742.50	100+00.0
DD 59	100+00.0	18"	12"	742.50	100+00.0
DD 60	100+00.0	18"	12"	742.50	100+00.0

DECK DRAINS (DD)

NO.	LOCATION	SIZE	DEPTH	INVERT	NOTE
DD 61	100+00.0	18"	12"	742.50	100+00.0
DD 62	100+00.0	18"	12"	742.50	100+00.0
DD 63	100+00.0	18"	12"	742.50	100+00.0
DD 64	100+00.0	18"	12"	742.50	100+00.0
DD 65	100+00.0	18"	12"	742.50	100+00.0
DD 66	100+00.0	18"	12"	742.50	100+00.0
DD 67	100+00.0	18"	12"	742.50	100+00.0
DD 68	100+00.0	18"	12"	742.50	100+00.0
DD 69	100+00.0	18"	12"	742.50	100+00.0
DD 70	100+00.0	18"	12"	742.50	100+00.0

DECK DRAINS (DD)

NO.	LOCATION	SIZE	DEPTH	INVERT	NOTE
DD 71	100+00.0	18"	12"	742.50	100+00.0
DD 72	100+00.0	18"	12"	742.50	100+00.0
DD 73	100+00.0	18"	12"	742.50	100+00.0
DD 74	100+00.0	18"	12"	742.50	100+00.0
DD 75	100+00.0	18"	12"	742.50	100+00.0
DD 76	100+00.0	18"	12"	742.50	100+00.0
DD 77	100+00.0	18"	12"	742.50	100+00.0
DD 78	100+00.0	18"	12"	742.50	100+00.0
DD 79	100+00.0	18"	12"	742.50	100+00.0
DD 80	100+00.0	18"	12"	742.50	100+00.0

DECK DRAINS (DD)

NO.	LOCATION	SIZE	DEPTH	INVERT	NOTE
DD 81	100+00.0	18"	12"	742.50	100+00.0
DD 82	100+00.0	18"	12"	742.50	100+00.0
DD 83	100+00.0	18"	12"	742.50	100+00.0
DD 84	100+00.0	18"	12"	742.50	100+00.0
DD 85	100+00.0	18"	12"	742.50	100+00.0
DD 86	100+00.0	18"	12"	742.50	100+00.0
DD 87	100+00.0	18"	12"	742.50	100+00.0
DD 88	100+00.0	18"	12"	742.50	100+00.0
DD 89	100+00.0	18"	12"	742.50	100+00.0
DD 90	100+00.0	18"	12"	742.50	100+00.0

DECK DRAINS (DD)

NO.	LOCATION	SIZE	DEPTH	INVERT	NOTE
DD 91	100+00.0	18"	12"	742.50	100+00.0
DD 92	100+00.0	18"	12"	742.50	100+00.0
DD 93	100+00.0	18"	12"	742.50	100+00.0
DD 94	100+00.0	18"	12"	742.50	100+00.0
DD 95	100+00.0	18"	12"	742.50	100+00.0
DD 96	100+00.0	18"	12"	742.50	100+00.0
DD 97	100+00.0	18"	12"	742.50	100+00.0
DD 98	100+00.0	18"	12"	742.50	100+00.0
DD 99	100+00.0	18"	12"	742.50	100+00.0
DD 100	100+00.0	18"	12"	742.50	100+00.0

DECK DRAINS (DD)

NO.	LOCATION	SIZE	DEPTH	INVERT	NOTE
DD 101	100+00.0	18"	12"	742.50	100+00.0
DD 102	100+00.0	18"	12"	742.50	100+00.0
DD 103	100+00.0	18"	12"	742.50	100+00.0
DD 104	100+00.0	18"	12"	742.50	100+00.0
DD 105	100+00.0	18"	12"	742.50	100+00.0
DD 106	100+00.0	18"	12"	742.50	100+00.0
DD 107	100+00.0	18"	12"	742.50	100+00.0
DD 108	100+00.0	18"	12"	742.50	100+00.0
DD 109	100+00.0	18"	12"	742.50	100+00.0
DD 110	100+00.0	18"	12"	742.50	100+00.0

DECK DRAINS (DD)

NO.	LOCATION	SIZE	DEPTH	INVERT	NOTE
DD 111	100+00.0	18"	12"	742.50	100+00.0
DD 112	100+00.0	18"	12"	742.50	100+00.0
DD 113	100+00.0	18"	12"	742.50	100+00.0
DD 114	100+00.0	18"	12"	742.50	100+00.0
DD 115	100+00.0	18"	12"	742.50	100+00.0
DD 116	100+00.0	18"	12"	742.50	100+00.0
DD 117	100+00.0	18"	12"	742.50	100+00.0
DD 118	100+00.0	18"	12"	742.50	100+00.0
DD 119	100+00.0	18"	12"	742.50	100+00.0
DD 120	100+00.0	18"	12"	742.50	100+00.0

DECK DRAINS (DD)

NO.	LOCATION	SIZE	DEPTH	INVERT	NOTE
DD 121	100+00.0	18"	12"	742.50	100+00.0
DD 122	100+00.0	18"	12"	742.50	100+00.0
DD 123	100+00.0	18"	12"	742.50	100+00.0
DD 124	100+00.0	18"	12"	742.50	100+00.0
DD 125	100+00.0	18"	12"	742.50	100+00.0
DD 126	100+00.0	18"	12"	742.50	100+00.0
DD 127	100+00.0	18"	12"	742.50	100+00.0
DD 128	100+00.0	18"	12"	742.50	100+00.0
DD 129	100+00.0	18"	12"	742.50	100+00.0
DD 130	100+00.0	18"	12"	742.50	100+00.0

DECK DRAINS (DD)

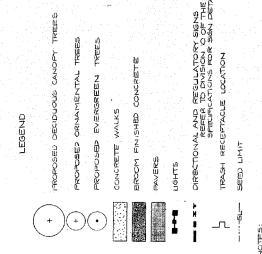
NO.	LOCATION	SIZE	DEPTH	INVERT	NOTE
DD 131	100+00.0	18"	12"	742.50	100+00.0
DD 132	100+00.0	18"	12"	742.50	100+00.0
DD 133	100+00.0	18"	12"	742.50	100+00.0
DD 134	100+00.0	18"	12"	742.50	100+00.0
DD 135	100+00.0	18"	12"	742.50	100+00.0
DD 136	100+00.0	18"	12"	742.50	100+00.0
DD 137	100+00.0	18"	12"	742.50	100+00.0
DD 138	100+00.0	18"	12"	742.50	100+00.0
DD 139	100+00.0	18"	12"	742.50	100+00.0
DD 140	100+00.0	18"	12"	742.50	100+00.0

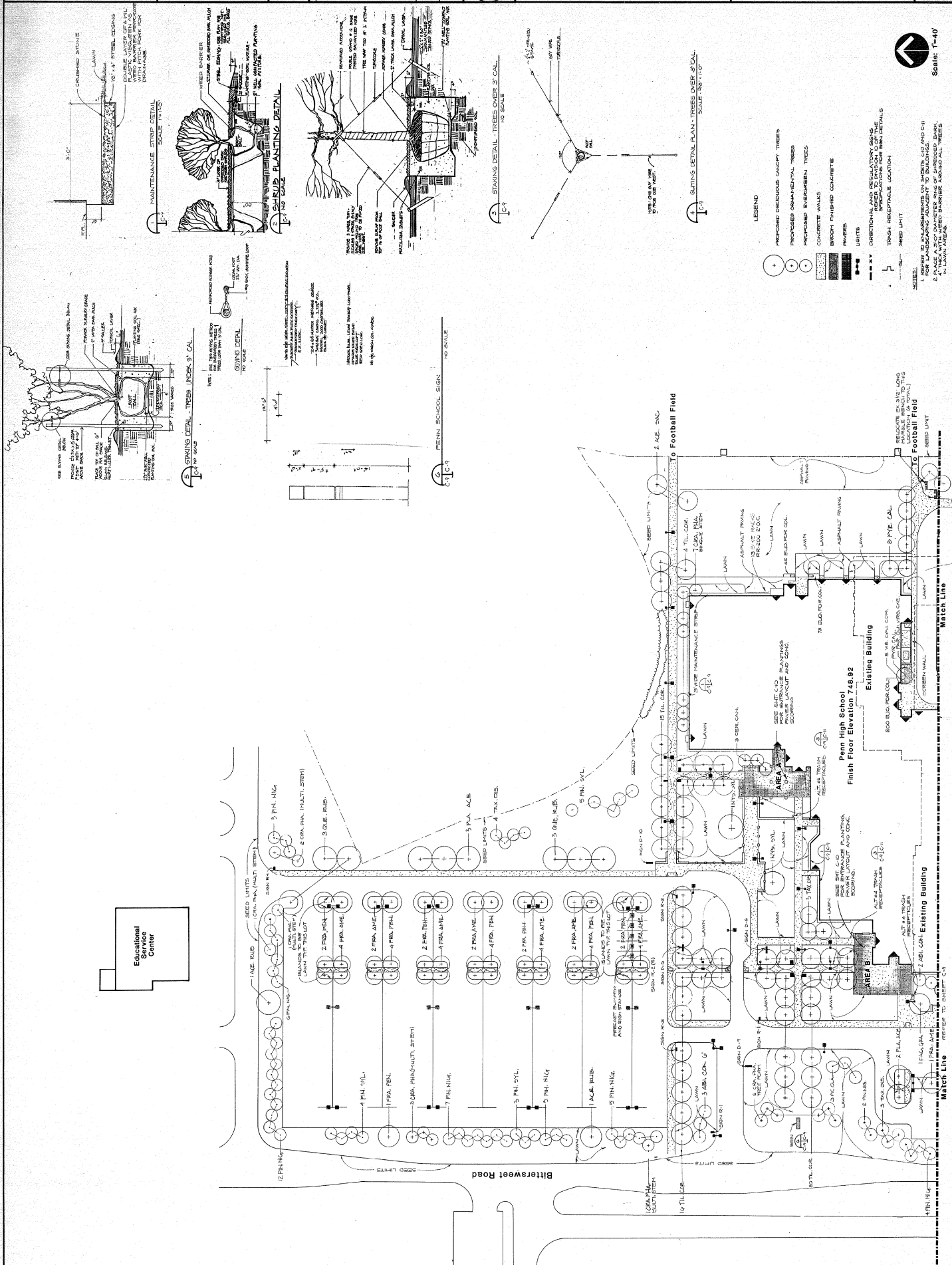
DECK DRAINS (DD)

NO.	LOCATION	SIZE	DEPTH	INVERT	NOTE
DD 141	100+00.0	18"	12"	742.50	100+00.0
DD 142	100+00.0	18"	12"	742.50	100+00.0
DD 143	100+00.0	18"	12"	742.50	100+00.0
DD 144	100+00.0	18"	12"	742.50	100+00.0
DD 145	100+00.0	18"	12"	742.50	100+00.0
DD 146	100+00.0	18"	12"	742.50	100+00.0
DD 147	100+00.0	18"	12"	742.50	100+00.0
DD 148	100+00.0	18"	12"	742.50	100+00.0
DD 149	100+00.0	18"	12"	742.50	100+00.0
DD 150	100+00.0	18"	12"	742.50	100+00.0

DECK DRAINS (DD)

NO.	LOCATION	SIZE	DEPTH	INVERT	NOTE
DD 151	100+00.0	18"	12"	742.50	100+00.0
DD 152	100+00.0	18"	12"	742.50	100+00.0
DD 153	100+00.0	18"	12"	742.50	100+00.0
DD 154	100+00.0	18"	12"	742.50	100+00.0
DD 155	100+00.0	18"	12"	742.50	100+00.0
DD 156	100+00.0	18"	12"	742.50	100+00.0
DD 157	100+00.0	18"	12"	742.50	100+00.0





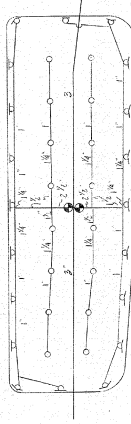
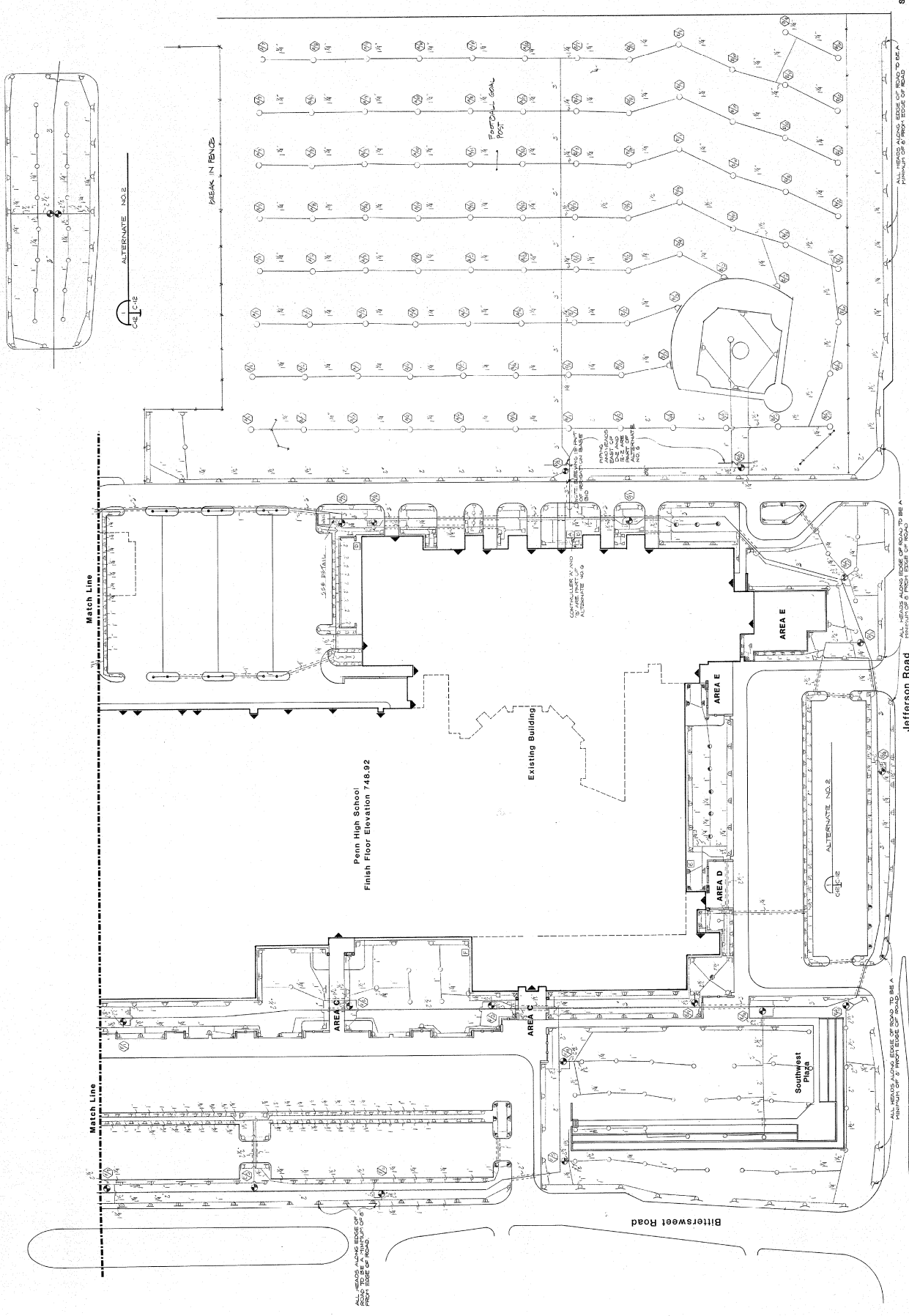




IRRIGATION PLAN
SOUTH

Renovations and Additions to the
Penn Harris-Madison School Corporation
Oscota, Indiana
Penn High School

C12
M0006.03



NO.	DESCRIPTION	DATE	BY	CHK	APP
1	CONSTRUCTION	8-1-82	DAV	OK	
2					
3					
4					
5					
6					
7					
8					
9					
10					



IRRIGATION PLAN

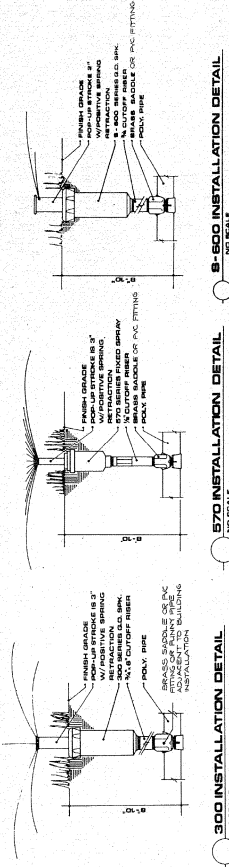
NORTH

Renovations and Additions to the
Penn High School
Penn-Harris-Madison School Corporation
Ocoee, Indiana

C13
M008603



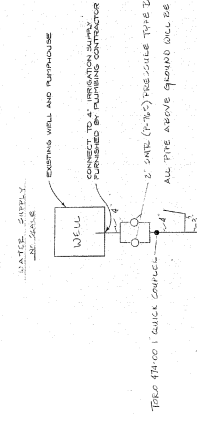
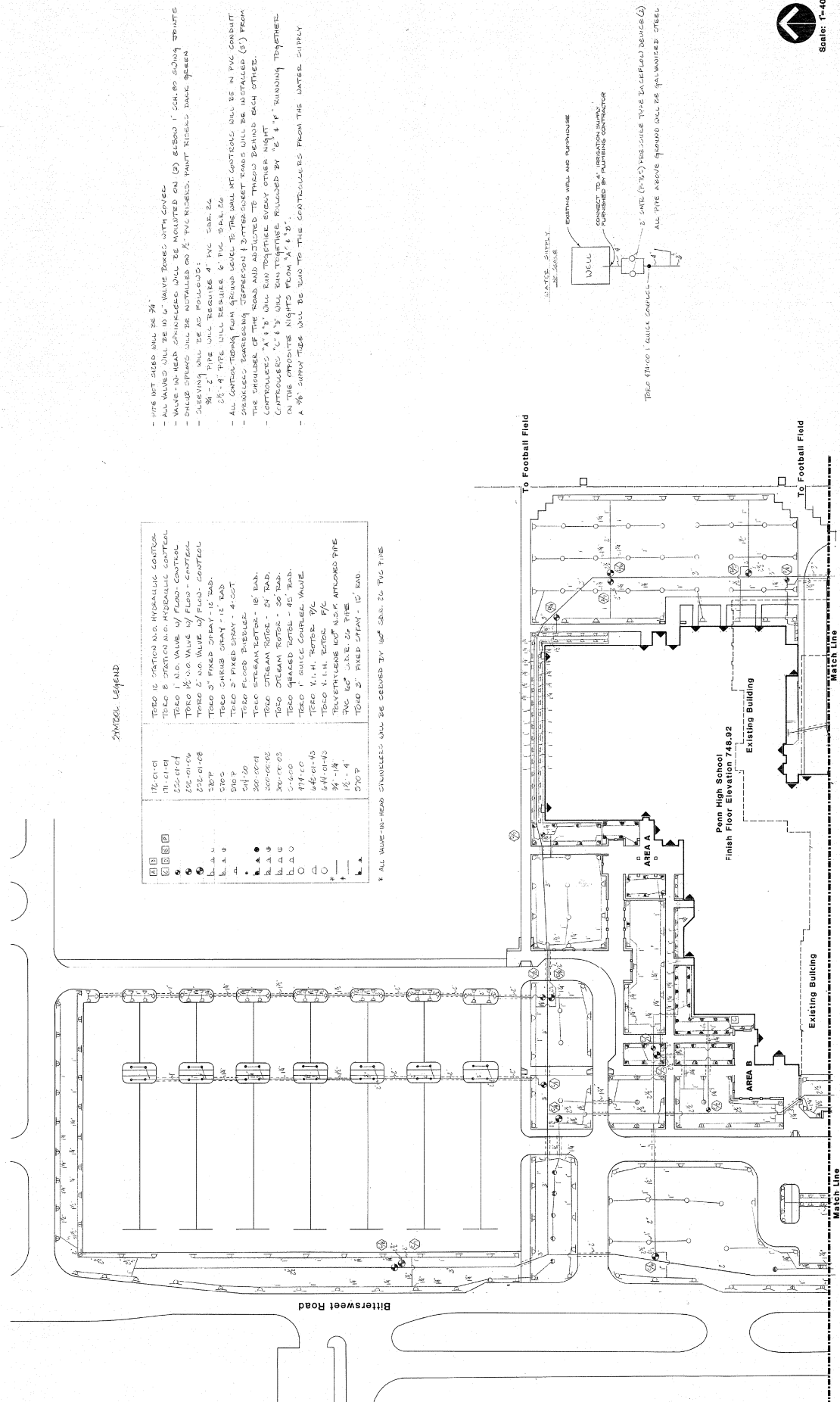
Scale: 1"=40'

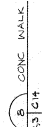
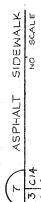
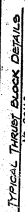
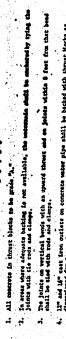
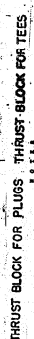
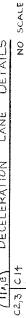
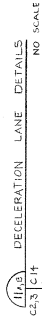
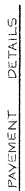
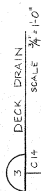
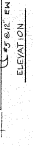
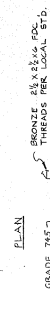
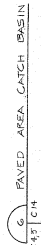
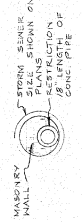
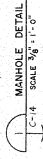


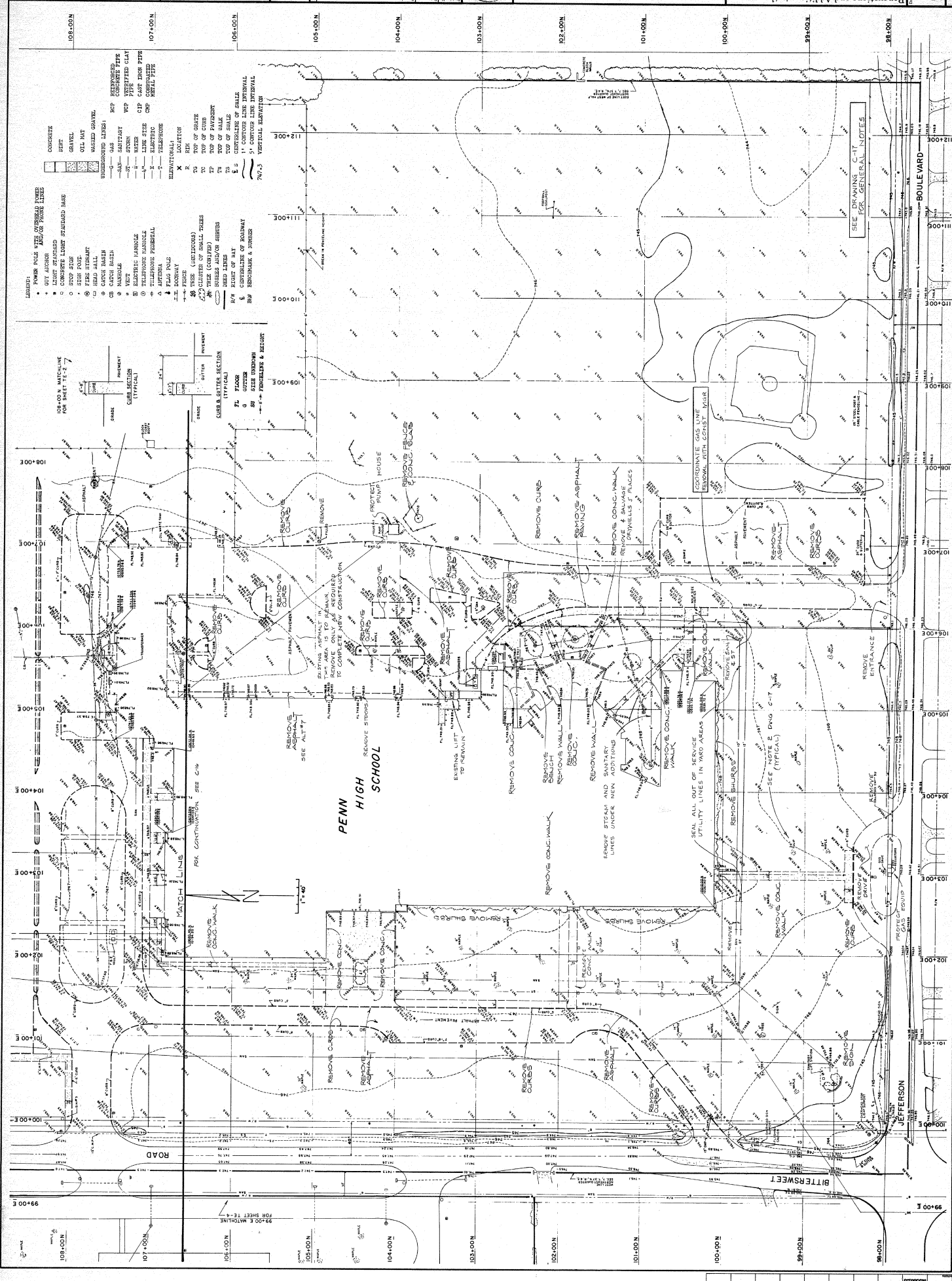
SYMBOL LEGEND

12-01-01	TRIO 12" STATION A.D. HYDRAULIC CONTROL
12-01-02	TRIO 12" STATION A.D. HYDRAULIC CONTROL
12-01-03	TRIO 12" NO. VALVE W/ FLOW - CONTROL
12-01-04	TRIO 12" NO. VALVE W/ FLOW - CONTROL
12-01-05	TRIO 12" NO. VALVE W/ FLOW - CONTROL
12-01-06	TRIO 12" NO. VALVE W/ FLOW - CONTROL
12-01-07	TRIO 12" NO. VALVE W/ FLOW - CONTROL
12-01-08	TRIO 12" NO. VALVE W/ FLOW - CONTROL
12-01-09	TRIO 12" NO. VALVE W/ FLOW - CONTROL
12-01-10	TRIO 12" NO. VALVE W/ FLOW - CONTROL
12-01-11	TRIO 12" NO. VALVE W/ FLOW - CONTROL
12-01-12	TRIO 12" NO. VALVE W/ FLOW - CONTROL
12-01-13	TRIO 12" NO. VALVE W/ FLOW - CONTROL
12-01-14	TRIO 12" NO. VALVE W/ FLOW - CONTROL
12-01-15	TRIO 12" NO. VALVE W/ FLOW - CONTROL
12-01-16	TRIO 12" NO. VALVE W/ FLOW - CONTROL
12-01-17	TRIO 12" NO. VALVE W/ FLOW - CONTROL
12-01-18	TRIO 12" NO. VALVE W/ FLOW - CONTROL
12-01-19	TRIO 12" NO. VALVE W/ FLOW - CONTROL
12-01-20	TRIO 12" NO. VALVE W/ FLOW - CONTROL
12-01-21	TRIO 12" NO. VALVE W/ FLOW - CONTROL
12-01-22	TRIO 12" NO. VALVE W/ FLOW - CONTROL
12-01-23	TRIO 12" NO. VALVE W/ FLOW - CONTROL
12-01-24	TRIO 12" NO. VALVE W/ FLOW - CONTROL
12-01-25	TRIO 12" NO. VALVE W/ FLOW - CONTROL
12-01-26	TRIO 12" NO. VALVE W/ FLOW - CONTROL
12-01-27	TRIO 12" NO. VALVE W/ FLOW - CONTROL
12-01-28	TRIO 12" NO. VALVE W/ FLOW - CONTROL
12-01-29	TRIO 12" NO. VALVE W/ FLOW - CONTROL
12-01-30	TRIO 12" NO. VALVE W/ FLOW - CONTROL
12-01-31	TRIO 12" NO. VALVE W/ FLOW - CONTROL
12-01-32	TRIO 12" NO. VALVE W/ FLOW - CONTROL
12-01-33	TRIO 12" NO. VALVE W/ FLOW - CONTROL
12-01-34	TRIO 12" NO. VALVE W/ FLOW - CONTROL
12-01-35	TRIO 12" NO. VALVE W/ FLOW - CONTROL
12-01-36	TRIO 12" NO. VALVE W/ FLOW - CONTROL
12-01-37	TRIO 12" NO. VALVE W/ FLOW - CONTROL
12-01-38	TRIO 12" NO. VALVE W/ FLOW - CONTROL
12-01-39	TRIO 12" NO. VALVE W/ FLOW - CONTROL
12-01-40	TRIO 12" NO. VALVE W/ FLOW - CONTROL
12-01-41	TRIO 12" NO. VALVE W/ FLOW - CONTROL
12-01-42	TRIO 12" NO. VALVE W/ FLOW - CONTROL
12-01-43	TRIO 12" NO. VALVE W/ FLOW - CONTROL
12-01-44	TRIO 12" NO. VALVE W/ FLOW - CONTROL
12-01-45	TRIO 12" NO. VALVE W/ FLOW - CONTROL
12-01-46	TRIO 12" NO. VALVE W/ FLOW - CONTROL
12-01-47	TRIO 12" NO. VALVE W/ FLOW - CONTROL
12-01-48	TRIO 12" NO. VALVE W/ FLOW - CONTROL
12-01-49	TRIO 12" NO. VALVE W/ FLOW - CONTROL
12-01-50	TRIO 12" NO. VALVE W/ FLOW - CONTROL
12-01-51	TRIO 12" NO. VALVE W/ FLOW - CONTROL
12-01-52	TRIO 12" NO. VALVE W/ FLOW - CONTROL
12-01-53	TRIO 12" NO. VALVE W/ FLOW - CONTROL
12-01-54	TRIO 12" NO. VALVE W/ FLOW - CONTROL
12-01-55	TRIO 12" NO. VALVE W/ FLOW - CONTROL
12-01-56	TRIO 12" NO. VALVE W/ FLOW - CONTROL
12-01-57	TRIO 12" NO. VALVE W/ FLOW - CONTROL
12-01-58	TRIO 12" NO. VALVE W/ FLOW - CONTROL
12-01-59	TRIO 12" NO. VALVE W/ FLOW - CONTROL
12-01-60	TRIO 12" NO. VALVE W/ FLOW - CONTROL
12-01-61	TRIO 12" NO. VALVE W/ FLOW - CONTROL
12-01-62	TRIO 12" NO. VALVE W/ FLOW - CONTROL
12-01-63	TRIO 12" NO. VALVE W/ FLOW - CONTROL
12-01-64	TRIO 12" NO. VALVE W/ FLOW - CONTROL
12-01-65	TRIO 12" NO. VALVE W/ FLOW - CONTROL
12-01-66	TRIO 12" NO. VALVE W/ FLOW - CONTROL
12-01-67	TRIO 12" NO. VALVE W/ FLOW - CONTROL
12-01-68	TRIO 12" NO. VALVE W/ FLOW - CONTROL
12-01-69	TRIO 12" NO. VALVE W/ FLOW - CONTROL
12-01-70	TRIO 12" NO. VALVE W/ FLOW - CONTROL
12-01-71	TRIO 12" NO. VALVE W/ FLOW - CONTROL
12-01-72	TRIO 12" NO. VALVE W/ FLOW - CONTROL
12-01-73	TRIO 12" NO. VALVE W/ FLOW - CONTROL
12-01-74	TRIO 12" NO. VALVE W/ FLOW - CONTROL
12-01-75	TRIO 12" NO. VALVE W/ FLOW - CONTROL
12-01-76	TRIO 12" NO. VALVE W/ FLOW - CONTROL
12-01-77	TRIO 12" NO. VALVE W/ FLOW - CONTROL
12-01-78	TRIO 12" NO. VALVE W/ FLOW - CONTROL
12-01-79	TRIO 12" NO. VALVE W/ FLOW - CONTROL
12-01-80	TRIO 12" NO. VALVE W/ FLOW - CONTROL
12-01-81	TRIO 12" NO. VALVE W/ FLOW - CONTROL
12-01-82	TRIO 12" NO. VALVE W/ FLOW - CONTROL
12-01-83	TRIO 12" NO. VALVE W/ FLOW - CONTROL
12-01-84	TRIO 12" NO. VALVE W/ FLOW - CONTROL
12-01-85	TRIO 12" NO. VALVE W/ FLOW - CONTROL
12-01-86	TRIO 12" NO. VALVE W/ FLOW - CONTROL
12-01-87	TRIO 12" NO. VALVE W/ FLOW - CONTROL
12-01-88	TRIO 12" NO. VALVE W/ FLOW - CONTROL
12-01-89	TRIO 12" NO. VALVE W/ FLOW - CONTROL
12-01-90	TRIO 12" NO. VALVE W/ FLOW - CONTROL
12-01-91	TRIO 12" NO. VALVE W/ FLOW - CONTROL
12-01-92	TRIO 12" NO. VALVE W/ FLOW - CONTROL
12-01-93	TRIO 12" NO. VALVE W/ FLOW - CONTROL
12-01-94	TRIO 12" NO. VALVE W/ FLOW - CONTROL
12-01-95	TRIO 12" NO. VALVE W/ FLOW - CONTROL
12-01-96	TRIO 12" NO. VALVE W/ FLOW - CONTROL
12-01-97	TRIO 12" NO. VALVE W/ FLOW - CONTROL
12-01-98	TRIO 12" NO. VALVE W/ FLOW - CONTROL
12-01-99	TRIO 12" NO. VALVE W/ FLOW - CONTROL
12-01-100	TRIO 12" NO. VALVE W/ FLOW - CONTROL

* ALL VALVE-IN-HEAD SHUTTERS WILL BE DERIVED BY 100' GROUND TO PVC PIPE









FEB 87	GIO & CONSTRUCTION				
UN RVD					
TR RAD					
OK					
APP					
IN CHARGE					

