



**Brownsburg Community School Corporation
2025 Cardinal Elementary School & Delaware Trail Elementary School Central Plant Upgrades**

DATE: December 15, 2025

This Addendum issued prior to bidding, alters, amends, corrects or clarifies the Proposal Documents to the extent stated herein and does hereby become a part of the Proposal Documents, and will become a part of the Contract Documents of the successful bidder.

GENERAL

A. GENERAL (N/A)

1. Question

- a. The project specifications have Eaton and Square D listed for manufacturers for the electrical equipment such as, panelboards, disconnects, motor starters, etc.
May we price with GE/ABB since that is what is existing in the building?

Response: Yes, use of GE/ABB is acceptable.

MECHANICAL

A. SPECIFICATIONS (N/A)

B. DRAWINGS

1. Drawing M320 – Enlarged Plan - Mechanical

- a. Each air-cooled chillers shall be installed on four (4) 18" tall x 96" long load rated roof equipment supports rails as manufactured by the Pate Company, Curb Technologies, or Thybar. Rails shall be installed along the long side of the chiller. Two shall be provided on each side. Equipment support curb manufacturer shall be responsible for design of support system to incorporate roof slope, stiffeners, static deflection, etc. Refer to attached drawings for general intent of submittal. Dimensions indicated on reference drawings are not project specific and will be confirmed with the actual chiller manufacturer. Curbs shall be flashed into the roofing system following roof manufacturer's requirements.

END OF ADDENDUM

4

3

2

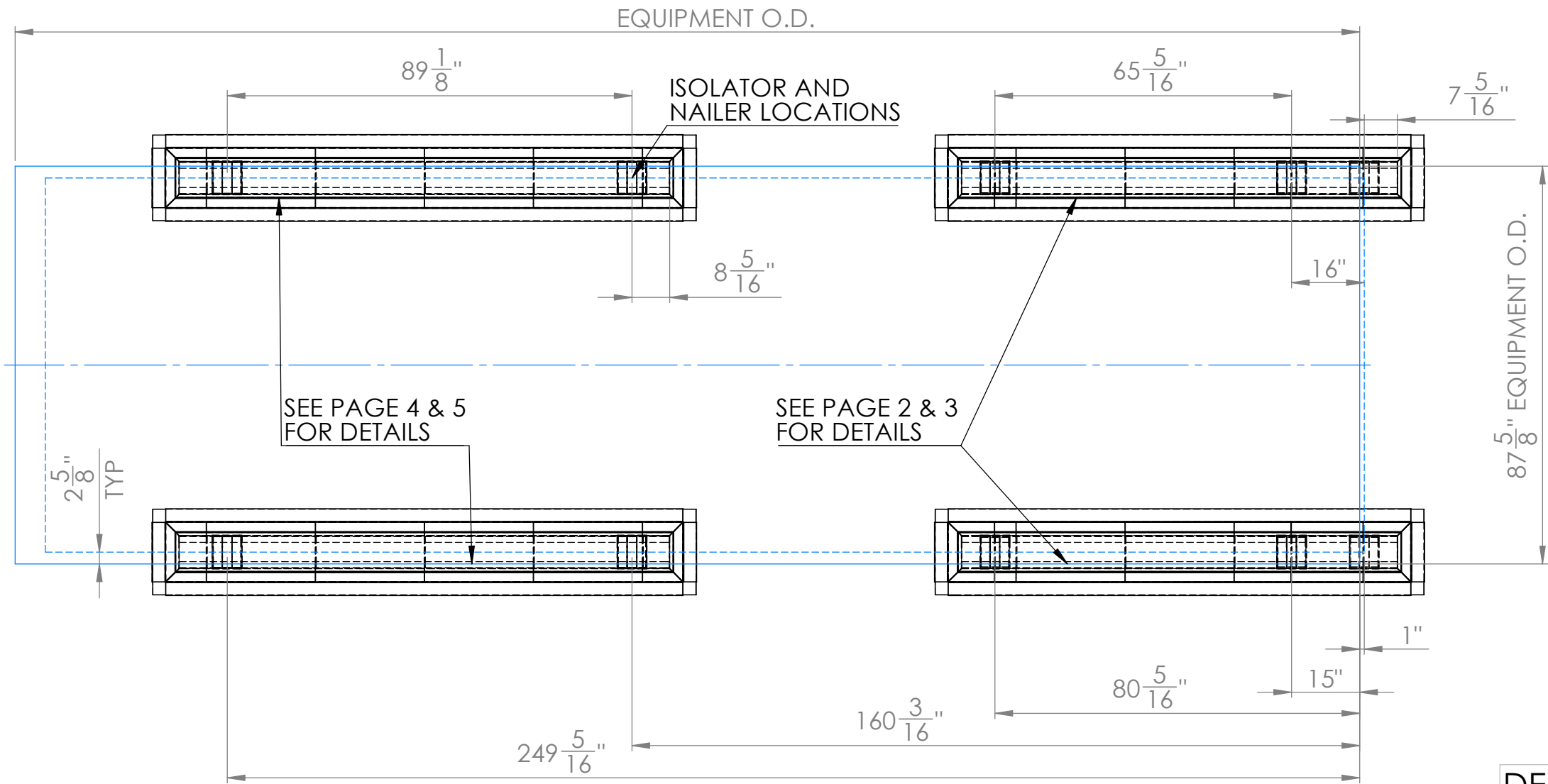
1

B

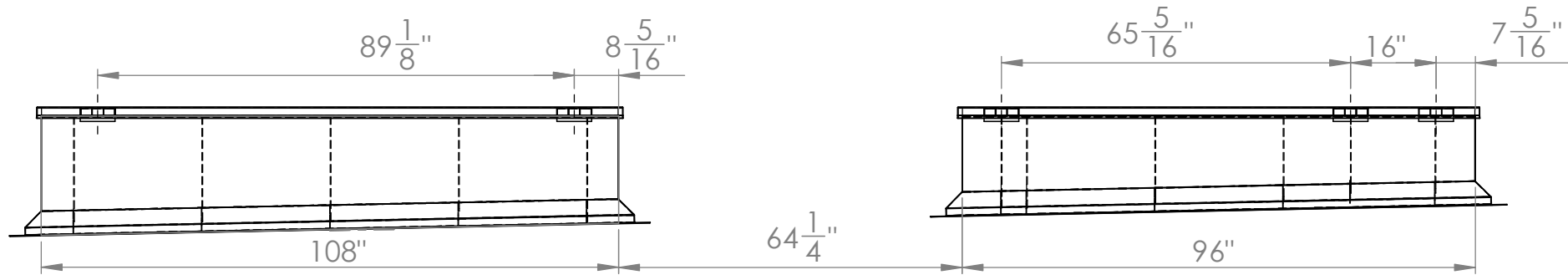
B

A

A



TOP VIEW



FRONT VIEW

NOTE: DIMENSIONS LISTED ON THIS DRAWING ARE NOT PROJECT SPECIFIC AND SHALL BE COORDINATED WITH SUCCESSFUL CHILLER MANUFACTURER'S FOOTPRINT.

REVISIONS	PROPRIETARY AND CONFIDENTIAL			
	THE INFORMATION CONTAINED IN THIS DRAWING IS THE SOLE PROPERTY OF THE PATE COMPANY. ANY REPRODUCTION IN PART OR AS A WHOLE WITHOUT THE WRITTEN PERMISSION OF THE PATE COMPANY IS PROHIBITED.			
	UNLESS OTHERWISE SPECIFIED: DIMENSIONS ARE IN INCHES TOLERANCES: FRACTIONAL ± 1/8 ANGULAR BEND: ± 2 DEG			
	DO NOT SCALE DRAWING			
APPR. FOR FABRICATION				DATE
INITIALS/SIGNED				
NAME				DATE
DRAWN				IB 7/5/2022
CHECKED				LK 7/5/2022

DESIGN STYLE: ES-5

CURB MATERIAL: 14ga Galvanized Steel
WOOD NAILER: 2 x 8 Pressure Treated Wood
REINFORCED TO CONFORM WITH PATE COMPANY
LOAD BEARING FACTOR

NOTES:
ALL METAL PARTS CONTINUOUSLY WELDED



The Pate Company
245 Eisenhower Ln. South, Lombard, IL 60148
phone: 630.705.1920
email: sales@patecurb.com

CUSTOMER NAME:
**MARSHALL BUILDING
SPECIALTIES CO.**

PROJECT NAME:
**BROWNSBURG
COMMUNITY SCHOOL**

QUOTE #
XXX

SIZE DWG. NO. REV
B C-22-0187

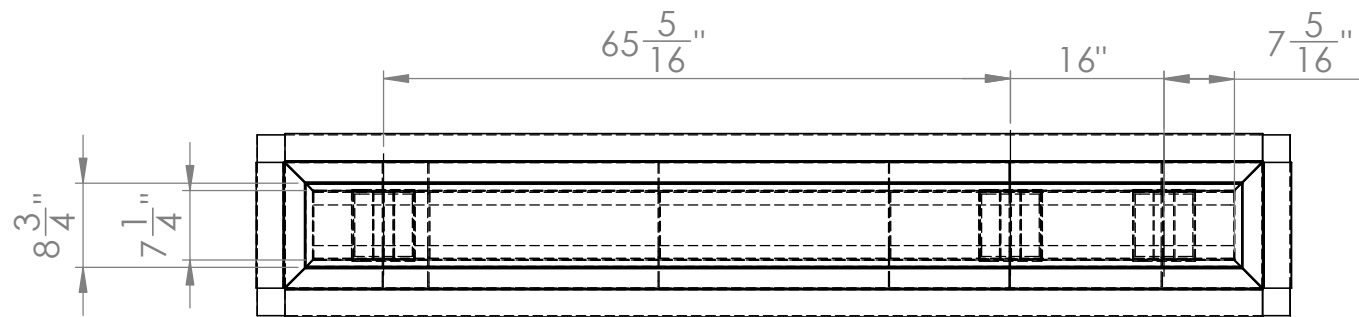
NTS SHEET 1 OF 5

4

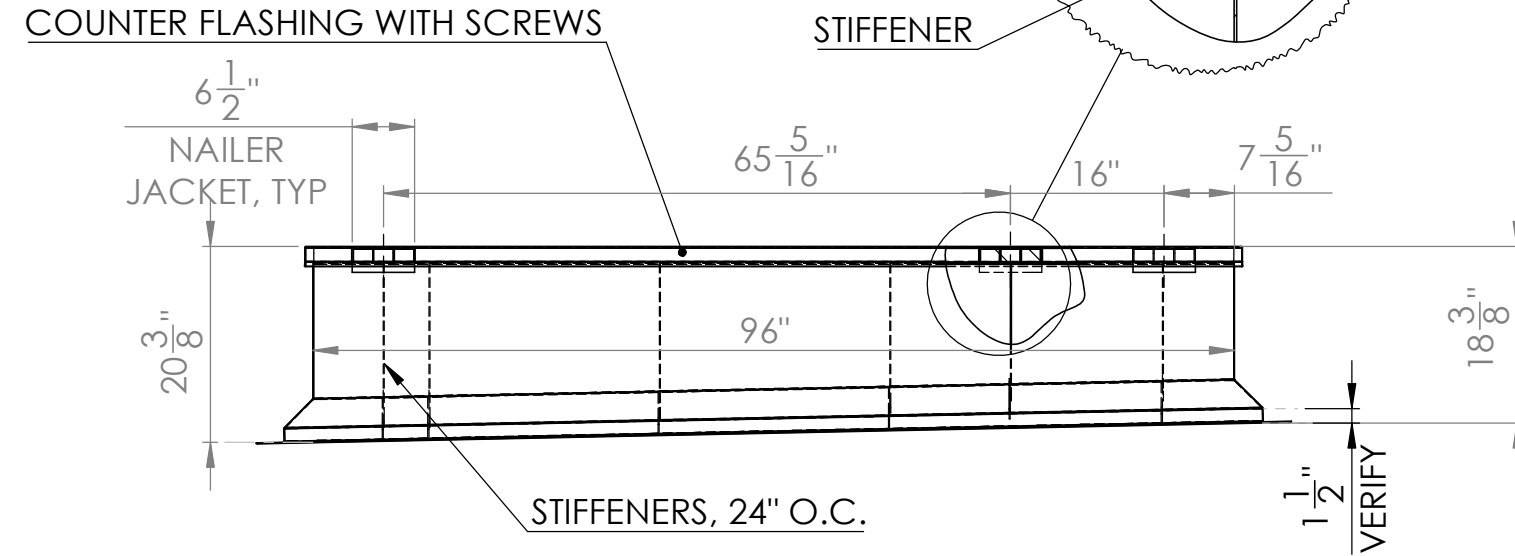
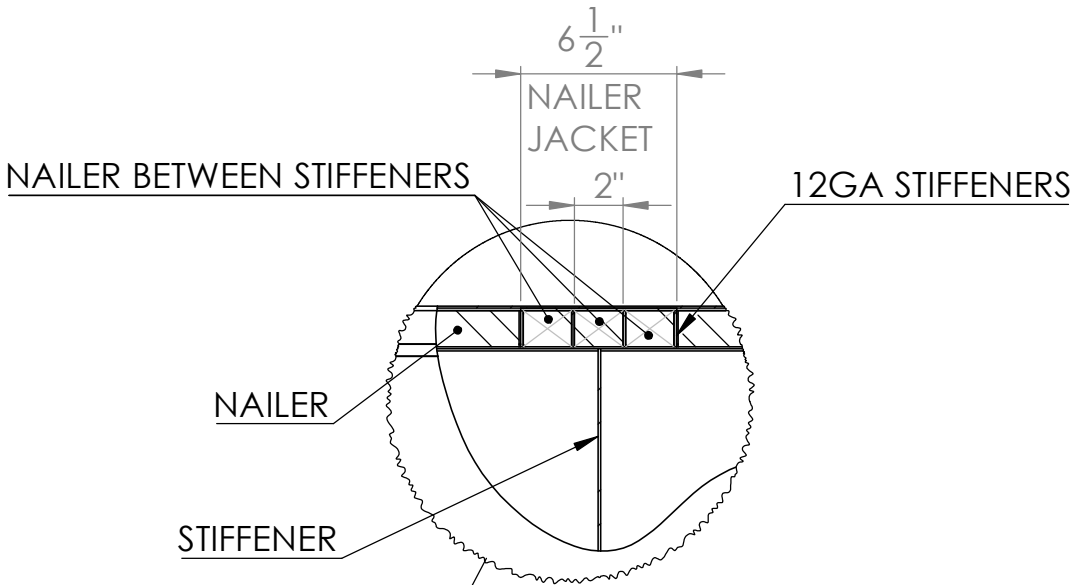
3

2

1

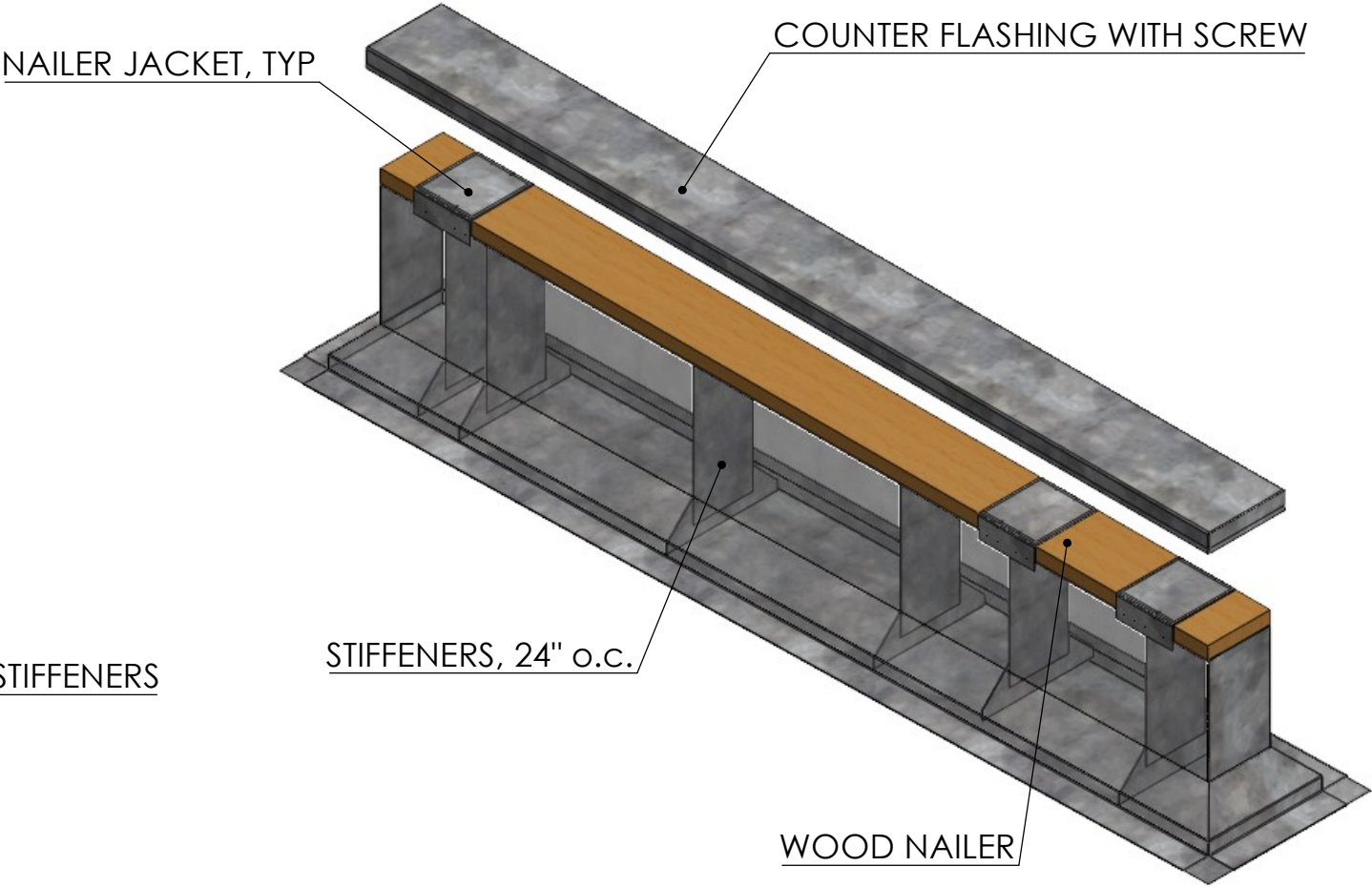


TOP VIEW



FRONT VIEW

NOTE: DIMENSIONS LISTED ON THIS DRAWING ARE NOT PROJECT SPECIFIC AND SHALL BE COORDINATED WITH SUCCESSFUL CHILLER MANUFACTURER'S FOOTPRINT.



ISOMETRIC VIEW

DESIGN STYLE: ES-5

CURB MATERIAL: 14ga Galvanized Steel
WOOD NAILER: 2 x 8 Pressure Treated Wood
REINFORCED TO CONFORM WITH PATE COMPANY
LOAD BEARING FACTOR

NOTES:
ALL METAL PARTS CONTINUOUSLY WELDED



The Pate Company
245 Eisenhower Ln. South, Lombard, IL 60148
phone: 630.705.1920
email: sales@patecurb.com

CUSTOMER NAME:
**MARSHALL BUILDING
SPECIALTIES CO.**

PROJECT NAME:
**BROWNSBURG
COMMUNITY SCHOOL**

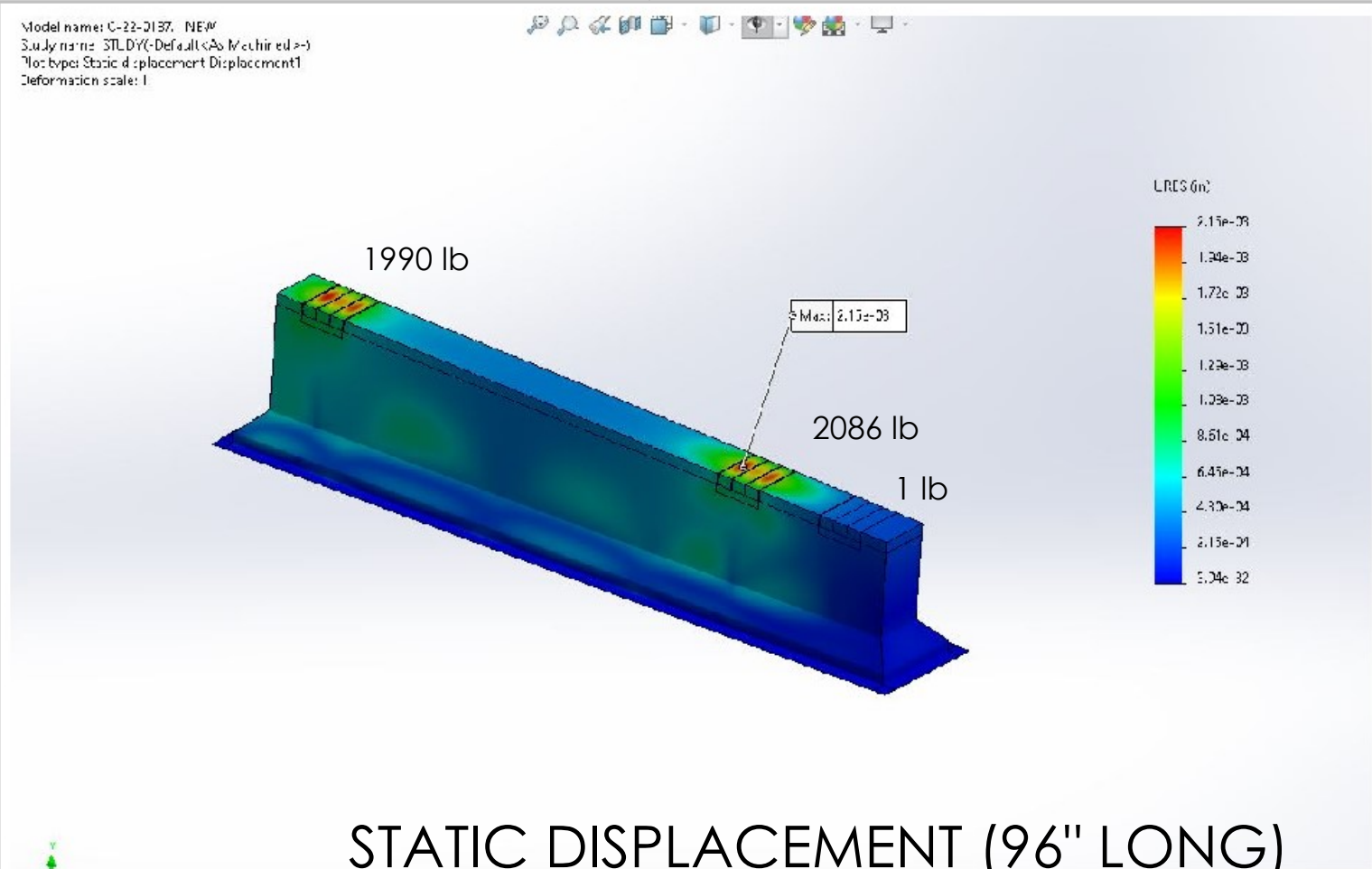
QUOTE #
XXX

SIZE DWG. NO. REV
B C-22-0187

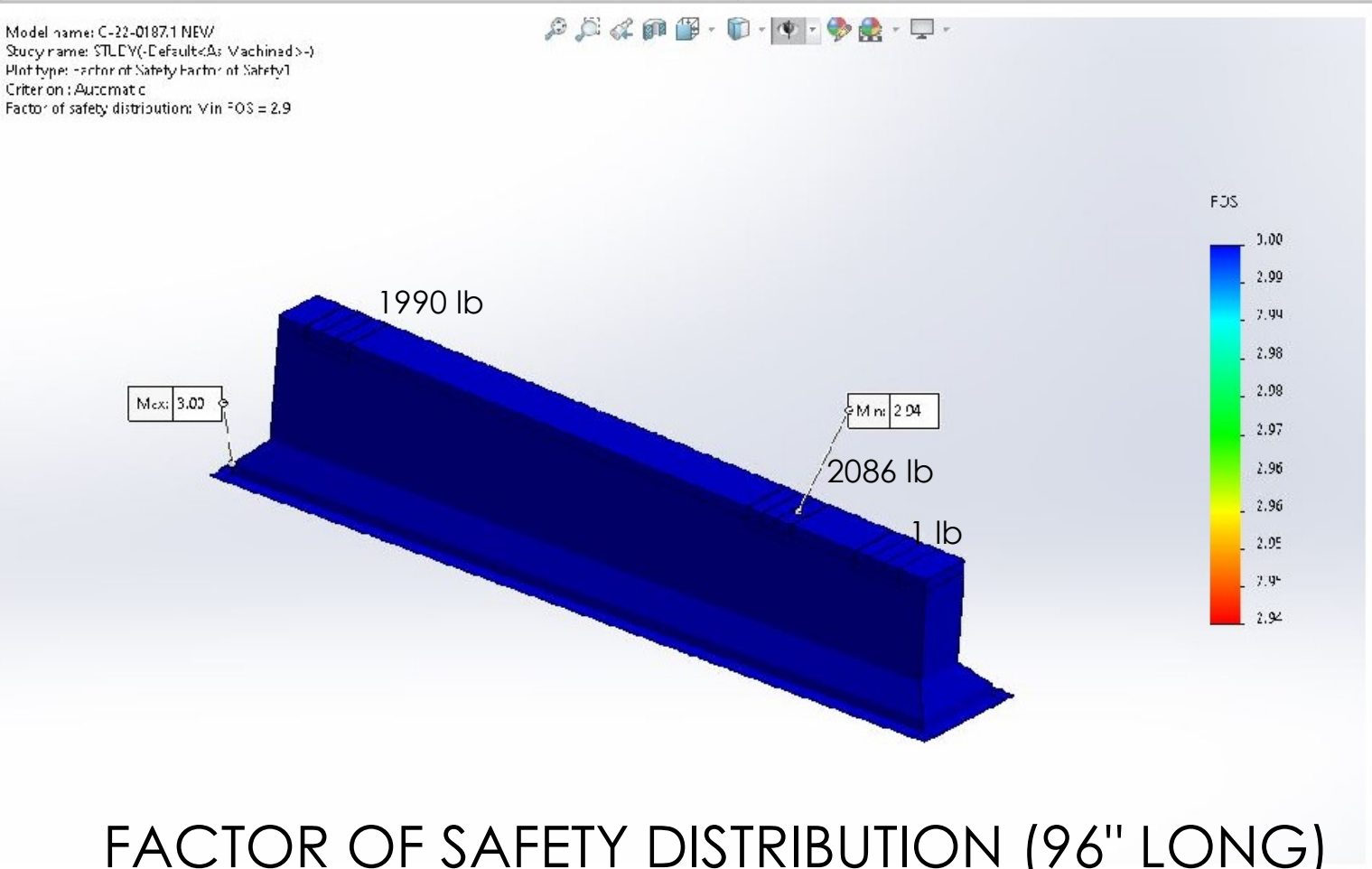
NTS SHEET 2 OF 5

REVISIONS	PROPRIETARY AND CONFIDENTIAL		UNLESS OTHERWISE SPECIFIED:	
	THE INFORMATION CONTAINED IN THIS DRAWING IS THE SOLE PROPERTY OF THE PATE COMPANY. ANY REPRODUCTION IN PART OR AS A WHOLE WITHOUT THE WRITTEN PERMISSION OF THE PATE COMPANY IS PROHIBITED.		DIMENSIONS ARE IN INCHES TOLERANCES: FRACTIONAL ± 1/8 ANGULAR BEND: ± 2 DEG	
			DO NOT SCALE DRAWING	
	INITIALS/SIGNED	DATE	NAME	DATE
			DRAWN IB	7/5/2022
			CHECKED LK	7/5/2022

B



STATIC DISPLACEMENT (96" LONG)



FACTOR OF SAFETY DISTRIBUTION (96" LONG)


A

NOTE: DIMENSIONS AND POINT LOADING LISTED ON THIS DRAWING ARE NOT PROJECT SPECIFIC AND SHALL BE COORDINATED WITH SUCCESSFUL CHILLER MANUFACTURER'S FOOTPRINT.

DESIGN STYLE: ES-5
CURB MATERIAL: 14ga Galvanized Steel
WOOD NAILER: 2 x 8 Pressure Treated Wood
REINFORCED TO CONFORM WITH PATE COMPANY LOAD BEARING FACTOR

NOTES:
ALL METAL PARTS CONTINUOUSLY WELDED

APPR. FOR FABRICATION				
INITIALS/SIGNED				DATE
REVISIONS	PROPRIETARY AND CONFIDENTIAL THE INFORMATION CONTAINED IN THIS DRAWING IS THE SOLE PROPERTY OF THE PATE COMPANY. ANY REPRODUCTION IN PART OR AS A WHOLE WITHOUT THE WRITTEN PERMISSION OF THE PATE COMPANY IS PROHIBITED.	UNLESS OTHERWISE SPECIFIED: DIMENSIONS ARE IN INCHES TOLERANCES: FRACTIONAL±1/8 ANGULAR BEND:±2DEG		
			DO NOT SCALE DRAWING	



The Pate Company
245 Eisenhower Ln. South, Lombard, IL 60148
phone: 630.705.1920
email: sales@patecurb.com

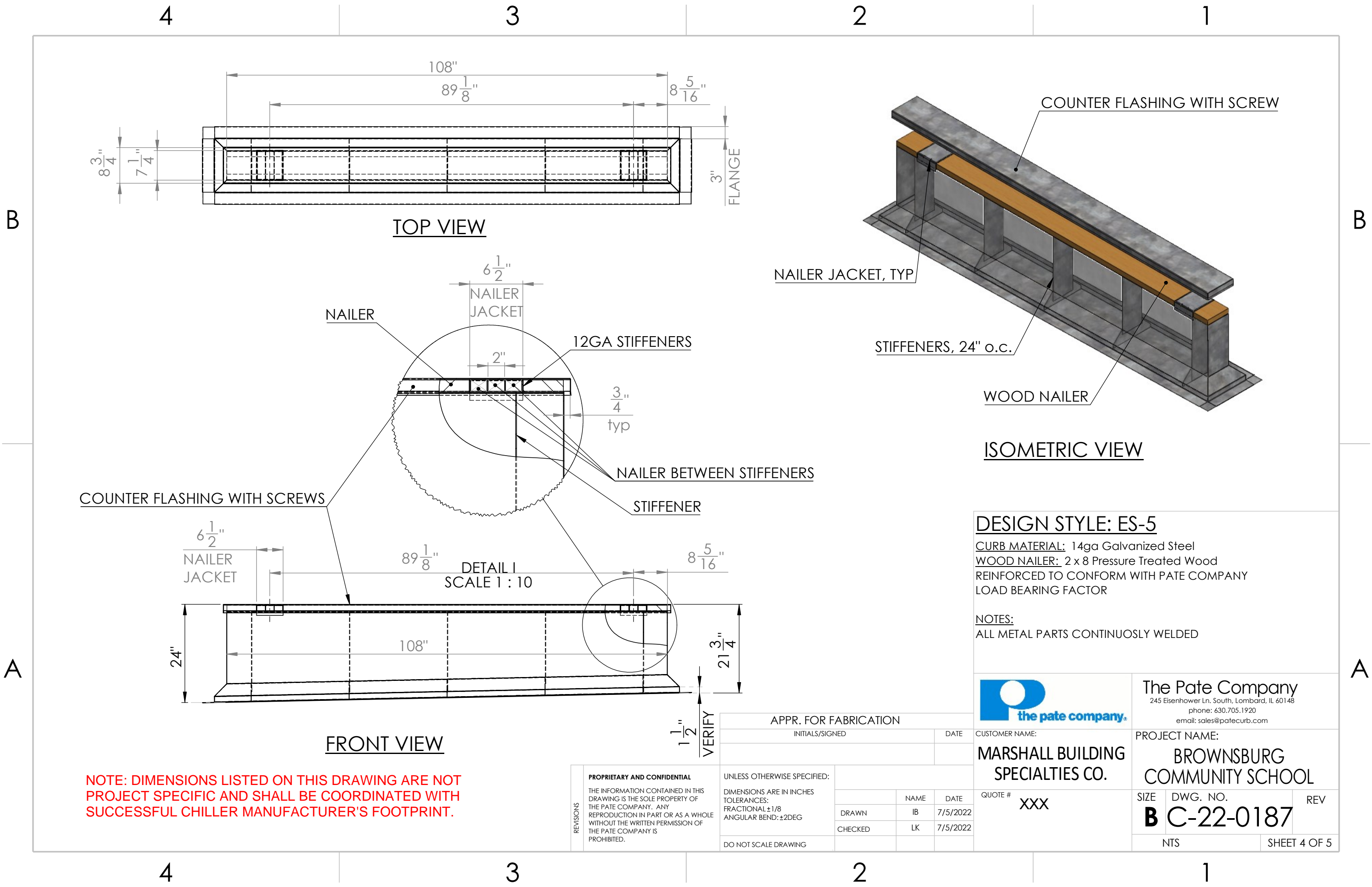
CUSTOMER NAME:
MARSHALL BUILDING SPECIALTIES CO.

QUOTE #
XXX

PROJECT NAME:
BROWNSBURG COMMUNITY SCHOOL

SIZE B	DWG. NO. C-22-0187	REV
NTS		SHEET 3 OF 5

A



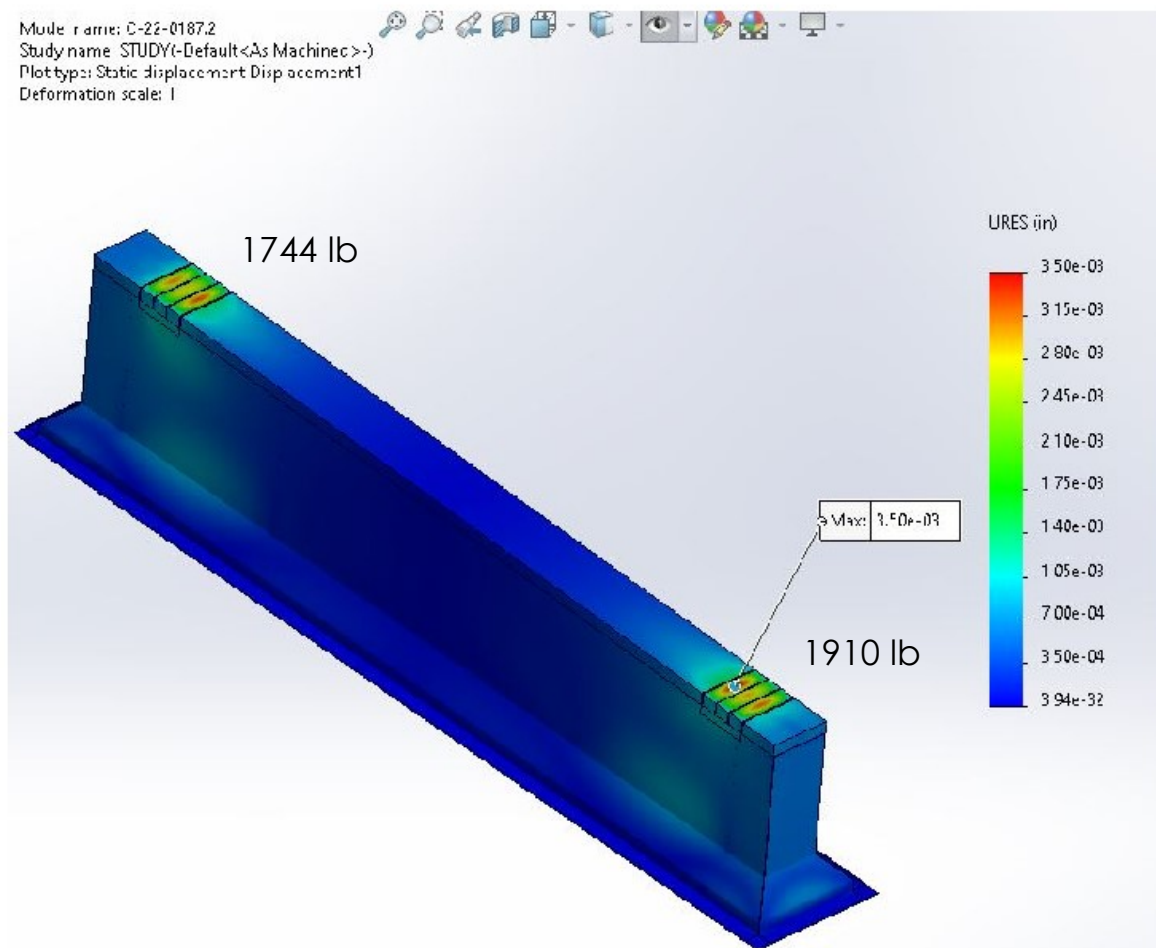
NOTE: DIMENSIONS LISTED ON THIS DRAWING ARE NOT PROJECT SPECIFIC AND SHALL BE COORDINATED WITH SUCCESSFUL CHILLER MANUFACTURER'S FOOTPRINT.

4

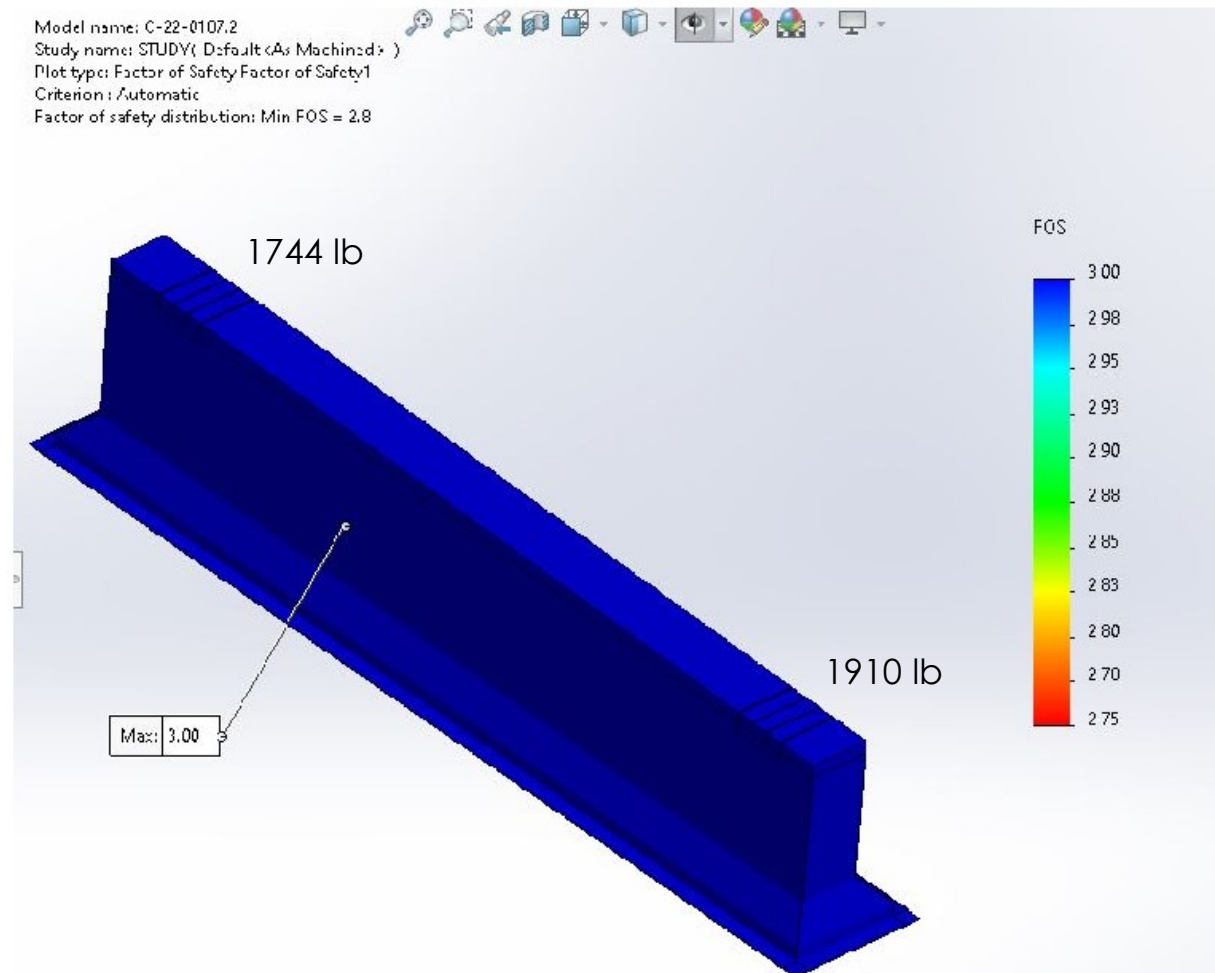
3

2

1



STATIC DISPLACEMENT (108" LONG)



FACTOR OF SAFETY DISTRIBUTION (108" LONG)

DESIGN STYLE: ES-5

CURB MATERIAL: 14ga Galvanized Steel

WOOD NAILER: 2 x 8 Pressure Treated Wood

REINFORCED TO CONFORM WITH PATE COMPANY
LOAD BEARING FACTOR

NOTES:

ALL METAL PARTS CONTINUOUSLY WELDED

The Pate Company
245 Eisenhower Ln. South, Lombard, IL 60148
phone: 630.705.1920
email: sales@patecurb.com

CUSTOMER NAME:

MARSHALL BUILDING
SPECIALTIES CO.

PROJECT NAME:
BROWNSBURG
COMMUNITY SCHOOL

QUOTE #	XXX
---------	-----

SIZE	DWG. NO.	REV
D	0000107	

B C-22-0187

NTS	SHEET 5 OF 5
-----	--------------

NOTE: DIMENSIONS AND POINT LOADING LISTED ON THIS DRAWING ARE NOT PROJECT SPECIFIC AND SHALL BE COORDINATED WITH SUCCESSFUL CHILLER MANUFACTURER'S FOOTPRINT.

		APPR. FOR FABRICATION				the pate company®		phone: 630.705.1920 email: sales@patecurb.com			
		INITIALS/SIGNED			DATE	CUSTOMER NAME:		PROJECT NAME:			
						MARSHALL BUILDING SPECIALTIES CO.		BROWNSBURG COMMUNITY SCHOOL			
REVISIONS	PROPRIETARY AND CONFIDENTIAL THE INFORMATION CONTAINED IN THIS DRAWING IS THE SOLE PROPERTY OF THE PATE COMPANY. ANY REPRODUCTION IN PART OR AS A WHOLE WITHOUT THE WRITTEN PERMISSION OF THE PATE COMPANY IS PROHIBITED.	UNLESS OTHERWISE SPECIFIED: DIMENSIONS ARE IN INCHES TOLERANCES: FRACTIONAL ±1/8 ANGULAR BEND: ±2DEG				QUOTE # XXX		SIZE	DWG. NO.	REV	
			DRAWN	IB	7/5/2022			B	C-22-0187		
			CHECKED	LK	7/5/2022						
		DO NOT SCALE DRAWING						NTS		SHEET 5 OF 5	

4

3

2

1

B

A

B

A