

CONSTRUCTION DOCUMENTS

Prairie Vista Elementary School Corridor Improvements

15400 Brick Road, Granger, Indiana 46530

222145.00

December 12, 2022

OWNER
**Penn - Harris -
Madison School
Corporation**



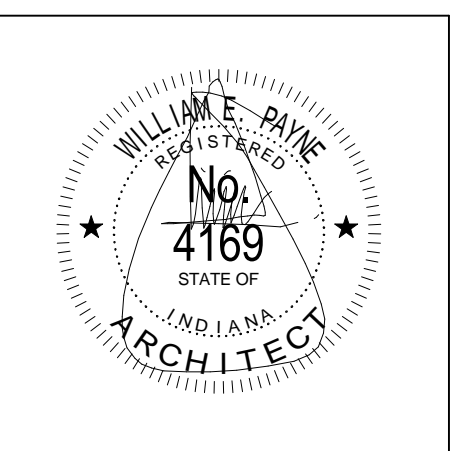
ARCHITECT
**FANNING HOWEY
ASSOCIATES INC.**
317-848-0966



SHEET INDEX

A1.01	UNIT A FLOOR PLAN
A1.02	UNIT B FLOOR PLAN
A-16	(1988 SET) UNIT A REFLECTED CEILING PLAN
A-17	(1988 SET) UNIT B REFLECTED CEILING PLAN

CONSTRUCTION DOCUMENTS



PROJECT NUMBER: 222145.00
PROJECT ISSUE DATE: December 12, 2022

COVER SHEET

GENERAL NOTES

- A. IT IS ANTICIPATED THAT THE VINYL IS TO BE CUT AT CEILING GRID AND NOT REMOVED ABOVE THE CEILING.
- B. IF NECESSARY, IT IS ANTICIPATED THAT THE VINYL IS TO BE CUT AT REVEAL TRIM ADJACENT BETWEEN GWB BULKHEADS AND ADJACENT CORRIDOR WALLS.
- C. REMOVE AND REINSTALL ALL ELECTRICAL WALL MOUNTED ELECTRICAL DEVICES AS REQUIRED TO ACCOMMODATE VINYL WALL COVERING REMOVAL, SKIM COATING (LEVEL 5), AND PAINTING OF CORRIDOR WALLS.
- D. REMOVE AND REINSTALL EXISTING ROOM / CORRIDOR SIGNAGE AS REQUIRED TO ACCOMMODATE VINYL WALL COVERING REMOVAL, SKIM COATING (LEVEL 5), AND PAINTING OF CORRIDOR WALLS.
- E. REMOVE AND REINSTALL EXISTING HARDWARE AS REQUIRED TO ACCOMMODATE VINYL WALL COVERING REMOVAL, SKIM COATING (LEVEL 5), AND PAINTING OF CORRIDOR WALLS.
- F. REMOVE AND REINSTALL FIRE EXTINGUISHER CABINETS AS REQUIRED TO ACCOMMODATE VINYL WALL COVERING REMOVAL, SKIM COATING (LEVEL 5), AND PAINTING OF CORRIDOR WALLS.
- G. REMOVE AND REINSTALL EXISTING THERMOSTATS AS REQUIRED TO ACCOMMODATE VINYL WALL COVERING REMOVAL, SKIM COATING (LEVEL 5), AND PAINTING OF CORRIDOR WALLS.
- H. PHM WILL REMOVE ALL BOOKS ON WOOD SHELVING UNITS PRIOR TO THE START OF VINYL WALL COVERING REMOVAL AT MEDIA CENTER. SEE DEMOLITION NOTE L FOR ADDITIONAL REQUIREMENTS.
- I. PHM WILL REMOVE PICTURES ON WALLS. THE CONTRACTOR SHALL FILL AND REPAIR ANY HOLES PRIOR TO THE WALL COVERING REMOVAL.
- J. EXISTING BULKHEADS DO NOT RECEIVE NEW PAINT.
- K. EXISTING CEILINGS DO NOT RECEIVE NEW PAINT.
- L. EXISTING HOLLOW METAL FRAMES DO NOT RECEIVE NEW PAINT.
- M. REFER TO EXISTING 1988 CEILING PLANS FOR CEILING AND BULKHEAD HEIGHTS.

DEMOLITION NOTES

- A. REMOVE EXISTING VINYL WALL COVERING FROM QUARRY TILE BASE TO BOTTOM OF EXISTING BULKHEAD/CEILING.
- B. REMOVE EXISTING RESILIENT BASE AND VINYL FABRIC WALL COVERING FROM FLOOR TO BOTTOM OF EXISTING BULKHEAD/CEILING.
- C. EXISTING BRICK WALL TO REMAIN.
- D. REMOVE AND REINSTALL EXISTING SINGLE ROW OF TACK STRIP.
- E. REMOVE AND REINSTALL EXISTING DOUBLE ROW OF TACK STRIP.
- F. REMOVE AND REINSTALL EXISTING EXPANSION JOINT COVER.
- G. REMOVE AND REINSTALL EXISTING TACKBOARD.
- H. EXISTING CMU CORRIDOR WALL TO REMAIN.
- J. AT OUTSIDE CORNERS, THE EXISTING VINYL WALL COVERING EXTENDS TO SLOPING CEILING ABOVE (APPROX. 18 A.F.F.) AT BOTH SIDES OF OUTSIDE CORNER.
- K. REMOVE AND REINSTALL EXISTING TACK STRIPS AROUND 3 SIDES OF COILING COUNTER DOOR.
- L. REMOVE AND REINSTALL EXISTING WOOD SHELVING AS REQUIRED TO ACCOMMODATE VINYL WALL COVERING REMOVAL.
- M. THERE IS NO VINYL WALL FABRIC ON EXISTING LOW WALL (ALL SIDES) AROUND MEDIA CENTER.
- N. THERE IS AN OFFSET OF VINYL WALL FABRIC AT REVEAL APPROXIMATELY 2' BELOW CEILING.
- O. REMOVE EXISTING RESILIENT BASE ON CMU WALL (ALL SIDES).
- P. REMOVE EXISTING RESILIENT BASE ON MEDIA CENTER LOW WALL (ALL SIDES).
- Q. REMOVE AND REINSTALL EXISTING MAIN SIGN "PRAIRIE VISTA".

PLAN NOTES

- 1. PROVIDE NEW 4" HIGH RESILIENT BASE AT CORRIDOR WALLS.
- 2. PAINT ALL GWB CORRIDOR WALLS WITH PAINT TYPE #9.211 (EPOXY SEMI-GLOSS).
- 3. PAINT ALL EXISTING CMU CORRIDOR WALLS WITH PAINT TYPE #4.223 (EPOXY SEMI-GLOSS).
- 4. DO NOT PAINT EXISTING BRICK.
- 5. PAINT ALL GWB MEDIA CENTER WALLS, INCLUDING LOW WALLS WITH PAINT TYPE #9.211 (EPOXY SEMI-GLOSS).
- 6. PROVIDE NEW 4" HIGH RESILIENT BASE AT MEDIA CENTER LOW WALL (ALL SIDES).

SCOPE LEGEND

- SCOPE #4A
- SCOPE #4B
- SCOPE #4C
- SCOPE #4D



UNIT A FLOOR PLAN
SCALE: 1/8" = 1'-0"

Prairie Vista Elementary School Corridor Improvements

15400 Brick Road, Granger, Indiana 46530

Penn - Harris - Madison School Corporation



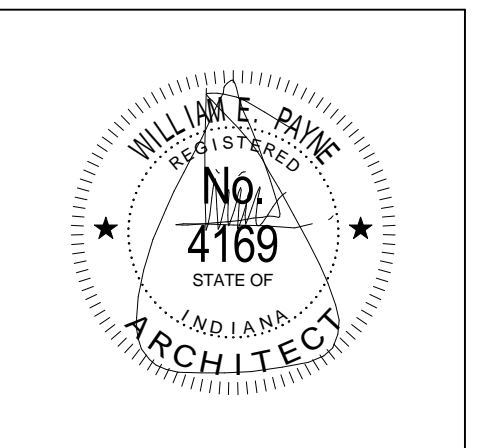
ARCHITECT



317-848-0966

WWW.FHAI.COM

CONSTRUCTION DOCUMENTS



PROJECT MANAGER: MKS
DRAWN BY: RLG
PROJECT NUMBER: 222145.00
PROJECT ISSUE DATE: December 12, 2022

REV. NO.	DESCRIPTION	DATE

UNIT A FLOOR PLAN

A1.01

Prairie Vista Elementary School Corridor Improvements

15400 Brick Road, Granger, Indiana 46530

Penn - Harris - Madison School Corporation

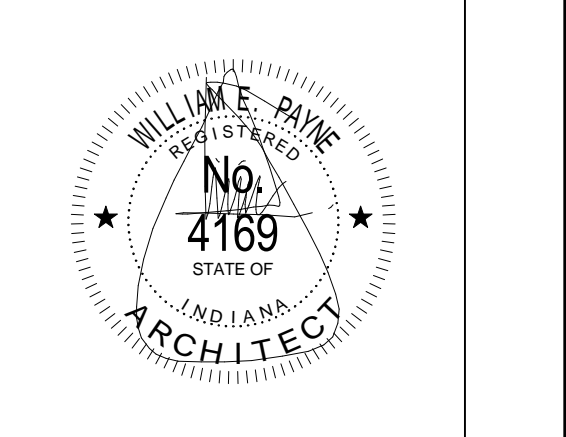


ARCHITECT



317-848-0966 WWW.FHAI.COM

CONSTRUCTION DOCUMENTS

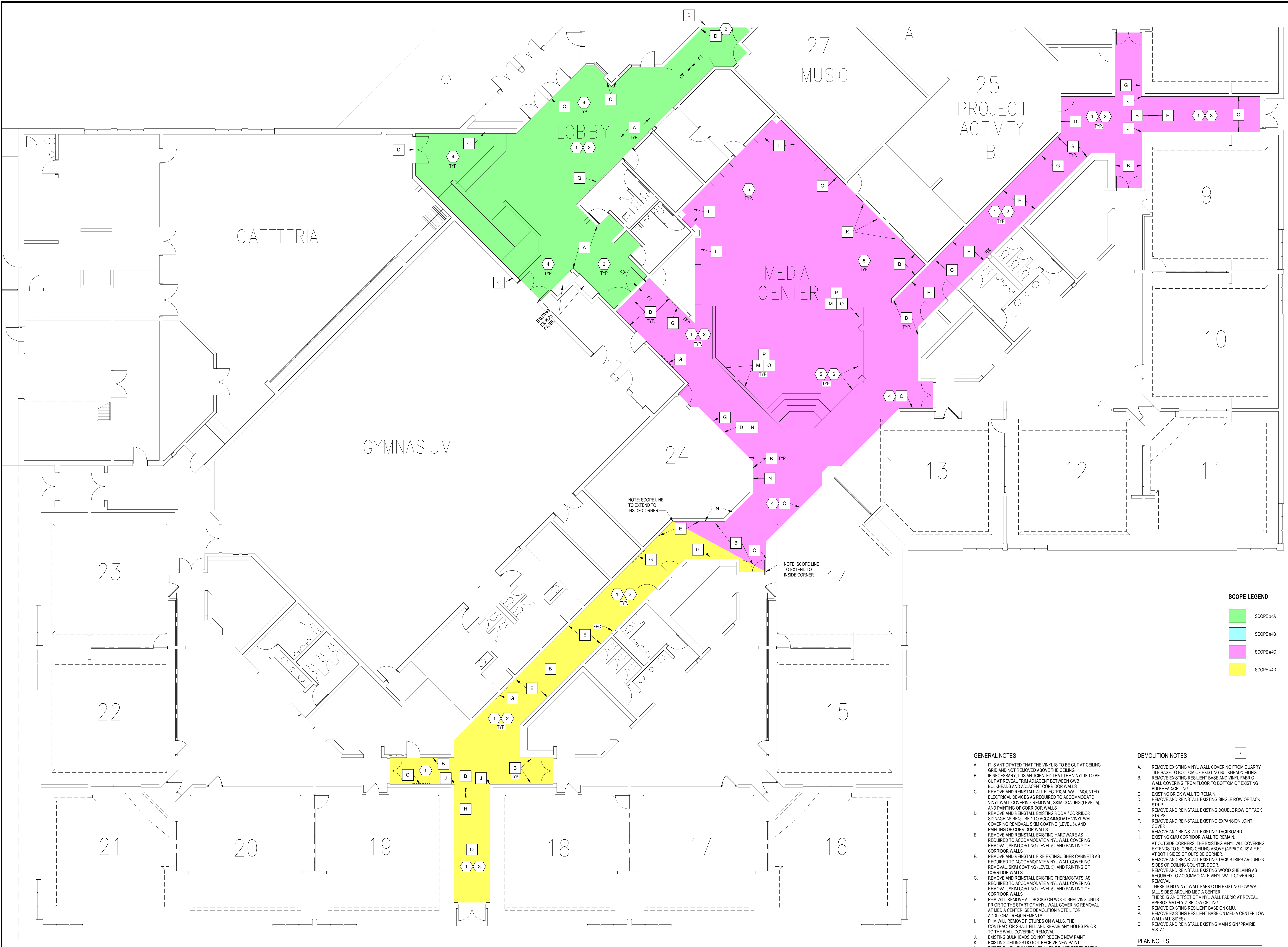


PROJECT MANAGER: MKS
DRAWN BY: RLG
PROJECT NUMBER: 222145.00
PROJECT ISSUE DATE: December 12, 2022

REV. NO.	DESCRIPTION	DATE

UNIT B FLOOR PLAN

A1.02



SCOPE LEGEND

- SCOPE #4A
- SCOPE #4B
- SCOPE #4C
- SCOPE #4D

GENERAL NOTES

- A. IT IS ANTICIPATED THAT THE VINYL IS TO BE CUT AT CEILING GRID AND NOT REMOVED ABOVE THE CEILING. IF NECESSARY, IT IS ANTICIPATED THAT THE VINYL IS TO BE CUT AT REVEAL TRIM ADJACENT BETWEEN GVB BULKHEADS AND ADJACENT CORRIDOR WALLS.
- B. REMOVE AND REINSTALL ALL ELECTRICAL WALL MOUNTED ELECTRICAL DEVICES AS REQUIRED TO ACCOMMODATE VINYL WALL COVERING REMOVAL, SKIM COATING (LEVEL 5), AND PAINTING OF CORRIDOR WALLS.
- C. REMOVE AND REINSTALL EXISTING ROOM / CORRIDOR SIGNAGE AS REQUIRED TO ACCOMMODATE VINYL WALL COVERING REMOVAL, SKIM COATING (LEVEL 5), AND PAINTING OF CORRIDOR WALLS.
- D. REMOVE AND REINSTALL EXISTING THERMOSTATS AS REQUIRED TO ACCOMMODATE VINYL WALL COVERING REMOVAL, SKIM COATING (LEVEL 5), AND PAINTING OF CORRIDOR WALLS.
- E. PHM WILL REMOVE ALL BOOKS ON WOOD SHELVING UNITS PRIOR TO THE START OF VINYL WALL COVERING REMOVAL AT MEDIA CENTER. SEE DEMOLITION NOTE L FOR ADDITIONAL REQUIREMENTS.
- F. PHM WILL REMOVE PICTURES ON WALLS. THE CONTRACTOR SHALL FILL AND REPAIR ANY HOLES PRIOR TO THE WALL COVERING REMOVAL.
- G. EXISTING BULKHEADS DO NOT RECEIVE NEW PAINT.
- H. EXISTING CEILINGS DO NOT RECEIVE NEW PAINT.
- I. EXISTING HOLLOW METAL FRAMES DO NOT RECEIVE NEW PAINT.
- J. REFER TO EXISTING 1988 CEILING PLANS FOR CEILING AND BULKHEAD HEIGHTS.

DEMOLITION NOTES

- A. REMOVE EXISTING VINYL WALL COVERING FROM QUARRY TILE BASE TO BOTTOM OF EXISTING BULKHEAD/CEILING.
- B. REMOVE EXISTING RESILIENT BASE AND VINYL FABRIC WALL COVERING FROM FLOOR TO BOTTOM OF EXISTING BULKHEAD/CEILING.
- C. EXISTING BRICK WALL TO REMAIN.
- D. REMOVE AND REINSTALL EXISTING SINGLE ROW OF TACK STRIPS.
- E. REMOVE AND REINSTALL EXISTING DOUBLE ROW OF TACK STRIPS.
- F. REMOVE AND REINSTALL EXISTING EXPANSION JOINT COVER.
- G. REMOVE AND REINSTALL EXISTING TACKBOARD.
- H. EXISTING CMU CORRIDOR WALL TO REMAIN.
- J. AT OUTSIDE CORNERS, THE EXISTING VINYL WALL COVERING EXTENDS TO SLOPING CEILING ABOVE (APPROX. 18" A.F.F.) AT BOTH SIDES OF OUTSIDE CORNER.
- K. REMOVE AND REINSTALL EXISTING TACK STRIPS AROUND 3 SIDES OF CEILING COUNTER DOOR.
- L. REMOVE AND REINSTALL EXISTING WOOD SHELVING AS REQUIRED TO ACCOMMODATE VINYL WALL COVERING REMOVAL.
- M. THERE IS NO VINYL WALL FABRIC ON EXISTING LOW WALL (ALL SIDES) AROUND MEDIA CENTER.
- N. THERE IS AN OFFSET OF VINYL WALL FABRIC AT REVEAL APPROXIMATELY 2' BELOW CEILING.
- O. REMOVE EXISTING RESILIENT BASE ON CMU.
- P. REMOVE EXISTING RESILIENT BASE ON MEDIA CENTER LOW WALL (ALL SIDES).
- Q. REMOVE AND REINSTALL EXISTING MAIN SIGN "PRAIRIE VISTA".

PLAN NOTES

- 1. PROVIDE NEW 4" HIGH RESILIENT BASE AT CORRIDOR WALLS.
- 2. PAINT ALL GVB CORRIDOR WALLS WITH PAINT TYPE #9.211 (EPOXY SEMI-GLOSS).
- 3. PAINT ALL EXISTING CMU CORRIDOR WALLS WITH PAINT TYPE #4.223 (EPOXY SEMI-GLOSS).
- 4. DO NOT PAINT EXISTING BRICK.
- 5. PAINT ALL GVB MEDIA CENTER WALLS, INCLUDING LOW WALLS WITH PAINT TYPE #9.211 (EPOXY SEMI-GLOSS).
- 6. PROVIDE NEW 4" HIGH RESILIENT BASE AT MEDIA CENTER LOW WALL (ALL SIDES).

UNIT B FLOOR PLAN
SCALE: 1/8" = 1'-0"

I:\Projects\2022\10-02-22\10-02-22_A102.dwg 12/12/2022 10:02:57 AM

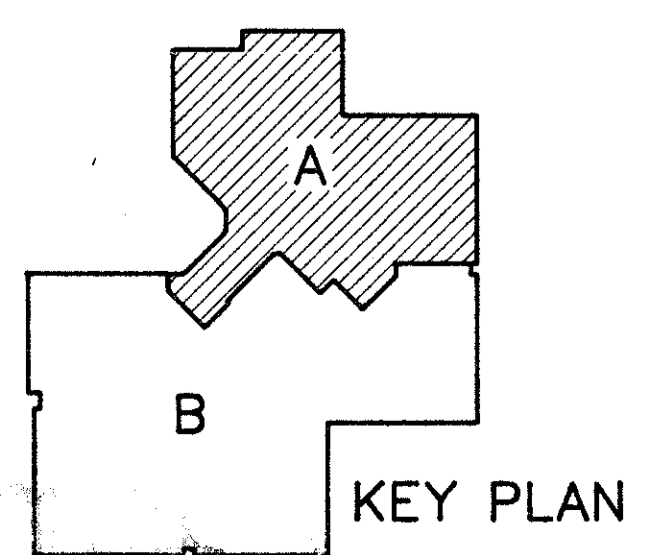
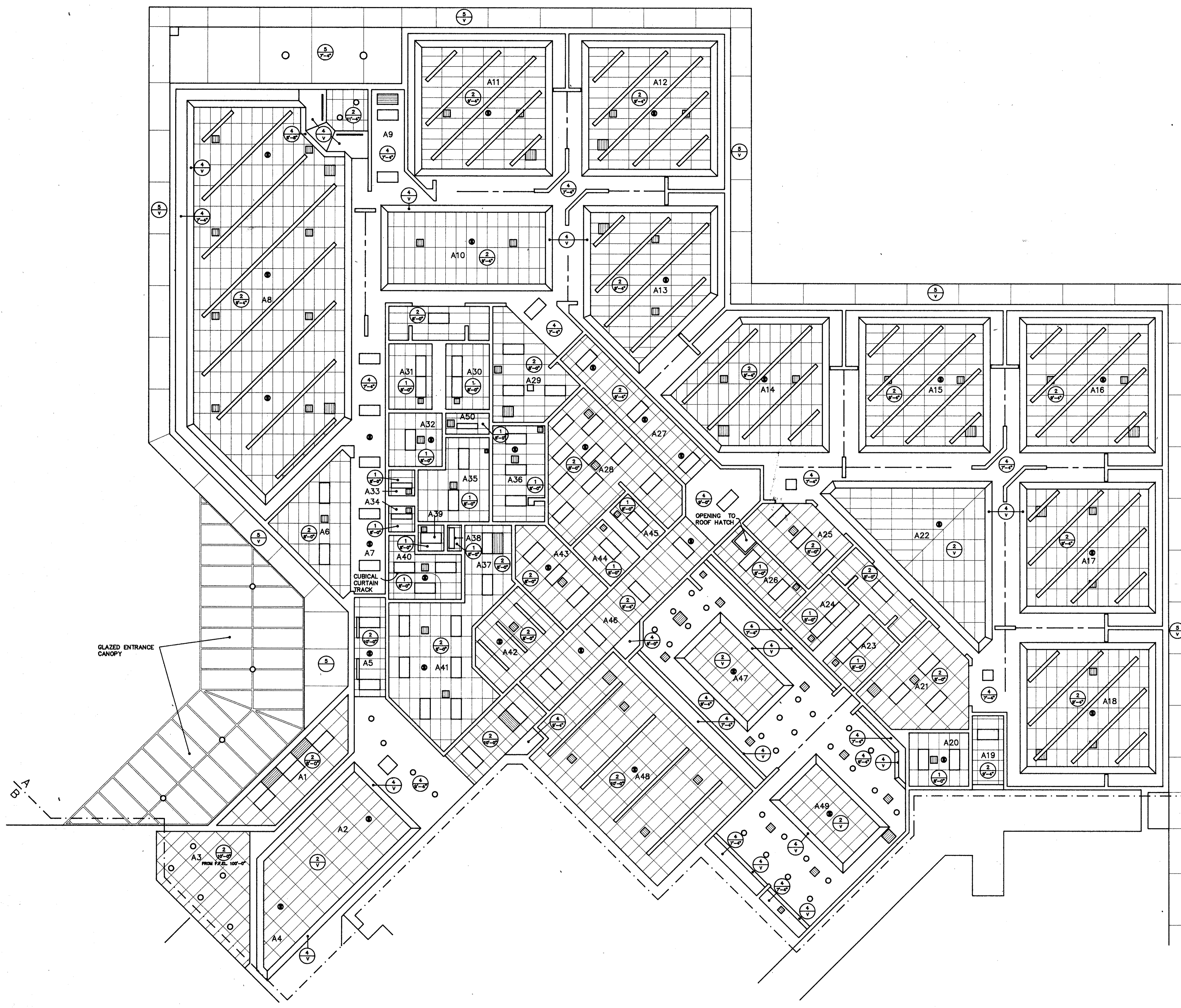
ROOM LEGEND UNIT "A"

ROOM NO.	ROOM NAME	SQ. FT.	CEILING HT.
A1	VESTIBULE	243	8'-0"
A2	ENTRY	485	VARIES
A3	PLATFORM	123	VARIES
A4	RAMP	180	VARIES
A5	CORRIDOR	176	10'-0"
A6	COAT STORAGE	249	8'-0"
A7	CORRIDOR	176	7'-4"
A8	KINDERGARTEN	2815	7'-4" & VARIES
A9	CORRIDOR	120	7'-4"
A10	EXTENDED LEARNING	1038	7'-0" & 9'-4"
A11	CLASSROOM	900	7'-4" & 9'-4"
A12	CLASSROOM	906	7'-4" & 9'-4"
A13	CLASSROOM	905	7'-4" & 9'-4"
A14	CLASSROOM	905	7'-4" & 9'-4"
A15	CLASSROOM	906	7'-4" & 9'-4"
A16	CLASSROOM	900	7'-4" & 9'-4"
A17	CLASSROOM	906	7'-4" & 9'-4"
A18	CLASSROOM	900	7'-4" & 9'-4"
A19	CORRIDOR	90	9'-4"
A20	CONFERENCE	127	8'-0"
A21	COAT STORAGE	309	8'-0"
A22	EXTENDED LEARNING	908	7'-4" & VARIES
A23	GIRLS' TOILET	132	8'-0"
A24	BOYS' TOILET	132	8'-0"
A25	COAT STORAGE	185	8'-0"
A26	JANITOR	126	8'-0"
A27	CORRIDOR	427	9'-4"
A28	TEACHERS' LOUNGE	444	8'-0"
A29	COAT STORAGE	230	8'-0"
A30	GIRLS' TOILET	128	8'-0"
A31	BOYS' TOILET	128	8'-0"
A32	CONFERENCE	67	8'-0"
A33	TOILET	25	8'-0"
A34	TOILET	25	8'-0"
A35	STORAGE	198	8'-0"
A36	WORK ROOM	215	8'-0"
A37	CORRIDOR	150	8'-0"
A38	CLOSET	13	8'-0"
A39	TOILET	25	8'-0"
A40	HEALTH	140	8'-0"
A41	RECEPTION	420	8'-0"
A42	PRINCIPAL	189	8'-0"
A43	CONFERENCE	208	8'-0"
A44	WOMENS' TOILET	88	8'-0"
A45	MENS' TOILET	55	8'-0"
A46	CORRIDOR	960	9'-4"
A47	PROJECT ACTIVITY	966	VARIES
A48	MUSIC	955	10'-0"
A49	PROJECT ACTIVITY	960	VARIES
A50	ELECTRICAL	32	8'-0"

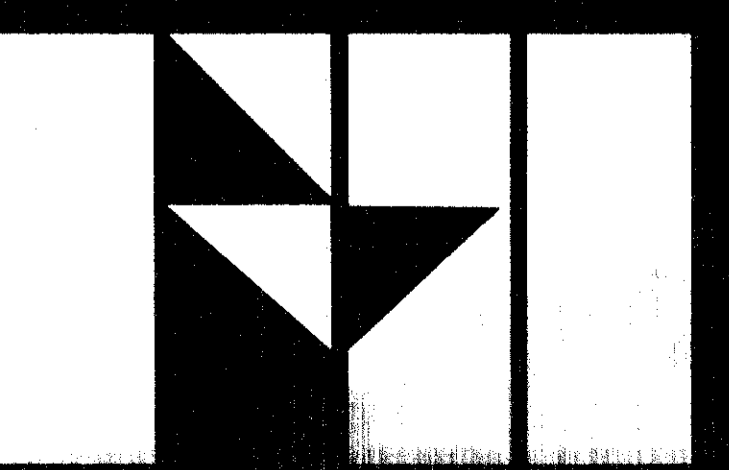
REFLECTED CEILING PLAN LEGEND

- CEILING TYPE
- CEILING HEIGHT (V - varies)
- LIGHT FIXTURES - SEE ELECTRICAL
- LOUVER - SEE MECHANICAL
- SPEAKERS - SEE ELECTRICAL

- ACOUSTICAL CEILING TILE TYPE 1
- ACOUSTICAL CEILING TILE TYPE 2
- ACOUSTICAL CEILING TILE TYPE 3
- GYPSUM WALLBOARD
- PLASTER
- PAINTED EXPOSED STRUCTURE



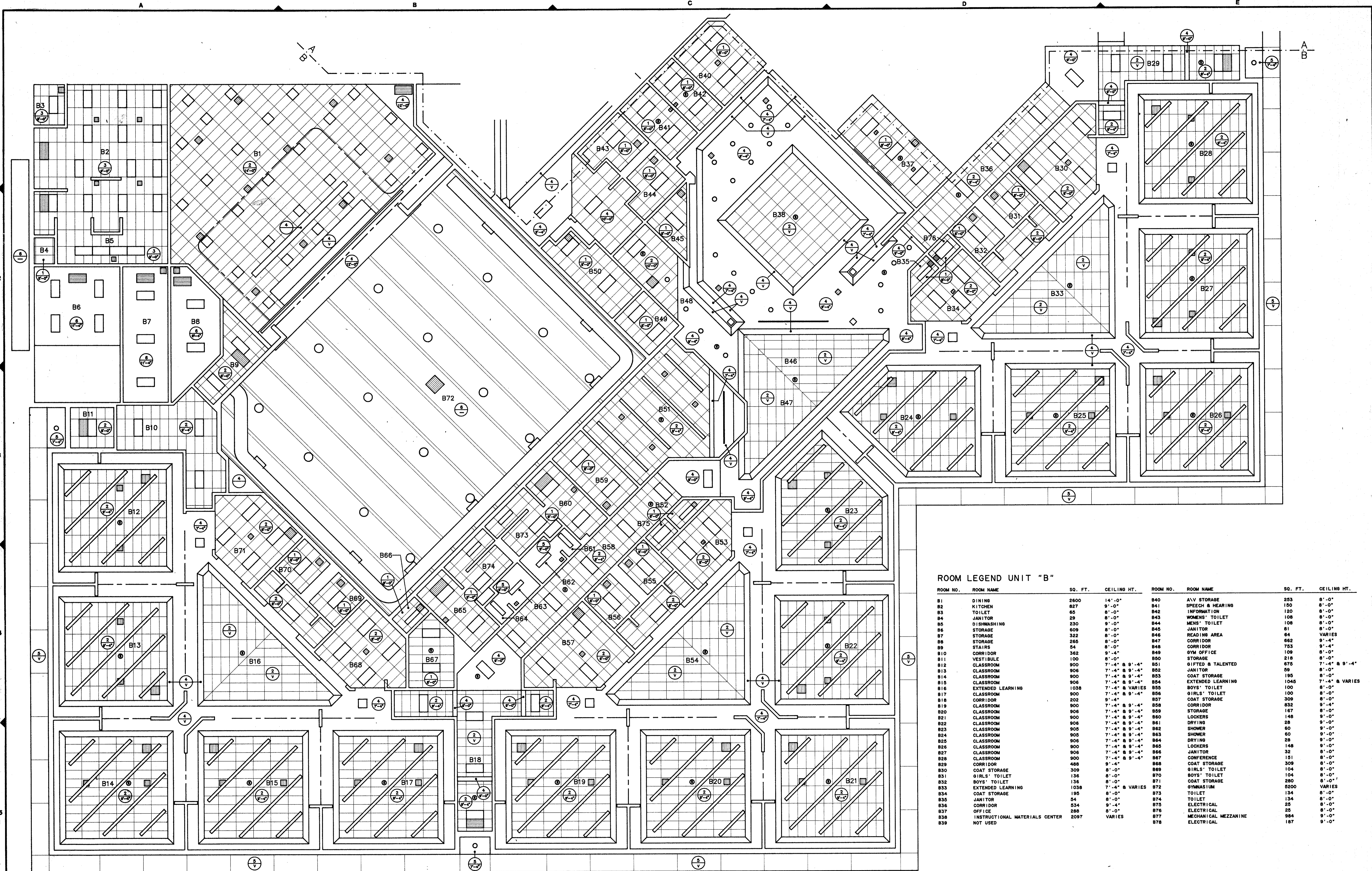
FANNING/HOWEY ASSOCIATES, Inc.
ARCHITECTS / ENGINEERS / CONSULTANTS



CEILING PLAN UNIT "A"
DRAWN BY: RGB COMM. NO.: 8712.00
CHECKED BY: JFS DATE: JAN. 11, 1988
REVISIONS NO. DATE
A-16

COPYRIGHT BY FANNING/HOWEY ASSOCIATES, INC.

A NEW ELEMENTARY SCHOOL
FOR
HARRIS TOWNSHIP
FOR THE
PENN-HARRIS-MADISON SCHOOL CORPORATION
GRANGER, INDIANA



ROOM LEGEND UNIT "B"

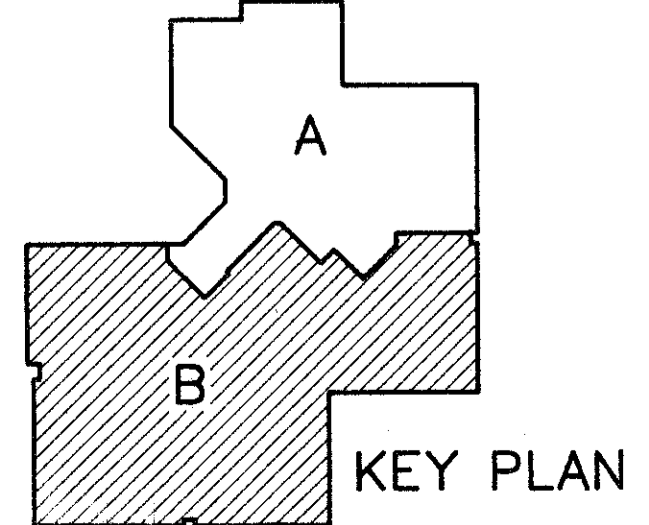
ROOM NO.	ROOM NAME	SQ. FT.	CEILING HT.	ROOM NO.	ROOM NAME	SQ. FT.	CEILING HT.
B1	DINING	2600	14'-0"	B40	AVY STORAGE	253	8'-0"
B2	KITCHEN	827	9'-0"	B41	SPEECH & HEARING	150	8'-0"
B3	TOILET	65	8'-0"	B42	INFORMATION	120	8'-0"
B4	JANITOR	29	8'-0"	B43	WOMENS' TOILET	108	8'-0"
B5	DISHWASHING	230	9'-0"	B44	MENS' TOILET	108	8'-0"
B6	STORAGE	609	8'-0"	B45	JANITOR	61	8'-0"
B7	STORAGE	322	8'-0"	B46	READING AREA	64	VARIES
B8	STORAGE	266	8'-0"	B47	CORRIDOR	662	9'-4"
B9	STAIRS	54	8'-0"	B48	CORRIDOR	753	9'-4"
B10	CORRIDOR	362	9'-4"	B49	GYM OFFICE	109	8'-0"
B11	VESTIBULE	100	8'-0"	B50	STORAGE	218	8'-0"
B12	CLASSROOM	900	7'-4" & 9'-4"	B51	GIFTED & TALENTED	675	7'-4" & 9'-4"
B13	CLASSROOM	906	7'-4" & 9'-4"	B52	JANITOR	58	8'-0"
B14	CLASSROOM	900	7'-4" & 9'-4"	B53	COAT STORAGE	195	8'-0"
B15	CLASSROOM	906	7'-4" & 9'-4"	B54	EXTENDED LEARNING	1045	7'-4" & VARIES
B16	EXTENDED LEARNING	1038	7'-4" & VARIES	B55	BOYS' TOILET	100	8'-0"
B17	CLASSROOM	900	7'-4" & 9'-4"	B56	GIRLS' TOILET	100	8'-0"
B18	CORRIDOR	202	9'-4"	B57	COAT STORAGE	309	8'-0"
B19	CLASSROOM	900	7'-4" & 9'-4"	B58	CORRIDOR	832	9'-4"
B20	CLASSROOM	906	7'-4" & 9'-4"	B59	STORAGE	187	8'-0"
B21	CLASSROOM	900	7'-4" & 9'-4"	B60	LOCKERS	148	9'-0"
B22	CLASSROOM	906	7'-4" & 9'-4"	B61	DRYING	28	9'-0"
B23	CLASSROOM	905	7'-4" & 9'-4"	B62	SHOWER	60	9'-0"
B24	CLASSROOM	905	7'-4" & 9'-4"	B63	SHOWER	60	9'-0"
B25	CLASSROOM	906	7'-4" & 9'-4"	B64	DRYING	28	9'-0"
B26	CLASSROOM	900	7'-4" & 9'-4"	B65	LOCKERS	148	9'-0"
B27	CLASSROOM	906	7'-4" & 9'-4"	B66	JANITOR	32	8'-0"
B28	CLASSROOM	900	7'-4" & 9'-4"	B67	CONFERENCE	151	8'-0"
B29	CORRIDOR	498	9'-4"	B68	COAT STORAGE	309	8'-0"
B30	COAT STORAGE	309	8'-0"	B69	GIRLS' TOILET	104	8'-0"
B31	GIRLS' TOILET	136	8'-0"	B70	BOYS' TOILET	104	8'-0"
B32	BOYS' TOILET	136	8'-0"	B71	COAT STORAGE	281	8'-0"
B33	EXTENDED LEARNING	1038	7'-4" & VARIES	B72	GYMNASIUM	5200	VARIES
B34	COAT STORAGE	195	8'-0"	B73	TOILET	134	8'-0"
B35	JANITOR	54	8'-0"	B74	TOILET	134	8'-0"
B36	CORRIDOR	534	9'-4"	B75	ELECTRICAL	25	8'-0"
B37	OFFICE	288	8'-0"	B76	ELECTRICAL	25	8'-0"
B38	INSTRUCTIONAL MATERIALS CENTER	2097	VARIES	B77	MECHANICAL MEZZANINE	984	9'-0"
B39	NOT USED			B78	ELECTRICAL	187	9'-0"

SEE REFLECTED CEILING PLAN LEGEND ON SHEET A-16

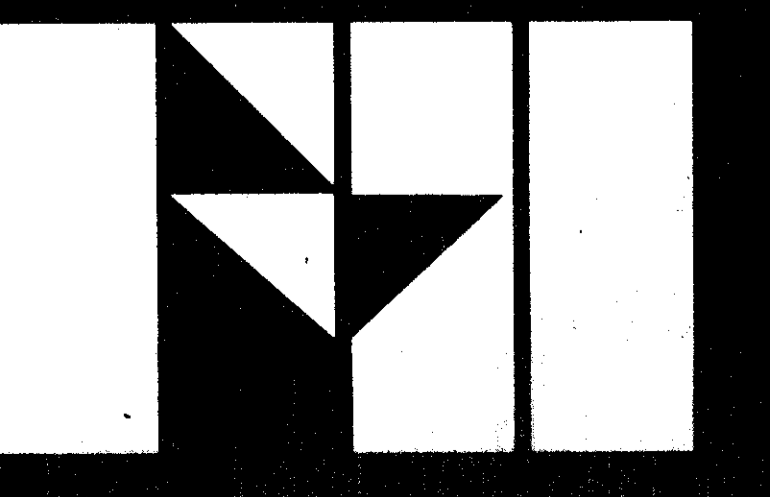
17-23

COPYRIGHT BY FANNING/HOWEY ASSOCIATES, INC.

A NEW ELEMENTARY SCHOOL
FOR
HARRIS TOWNSHIP
FOR THE
PENN-HARRIS-MADISON SCHOOL CORPORATION
GRANGER, INDIANA



FANNING/HOWEY ASSOCIATES, Inc.
ARCHITECTS / ENGINEERS / CONSULTANTS



CEILING PLAN UNIT "B"

DRAWN BY: RGB COMM. NO.: 8712.00
CHECKED BY: JFS DATE: JAN. 11, 1988

REVISIONS NO. DATE

A-17

HARRIS TOWNSHIP
ELEMENTARY SCHOOL