

ADDENDUM NO. 1

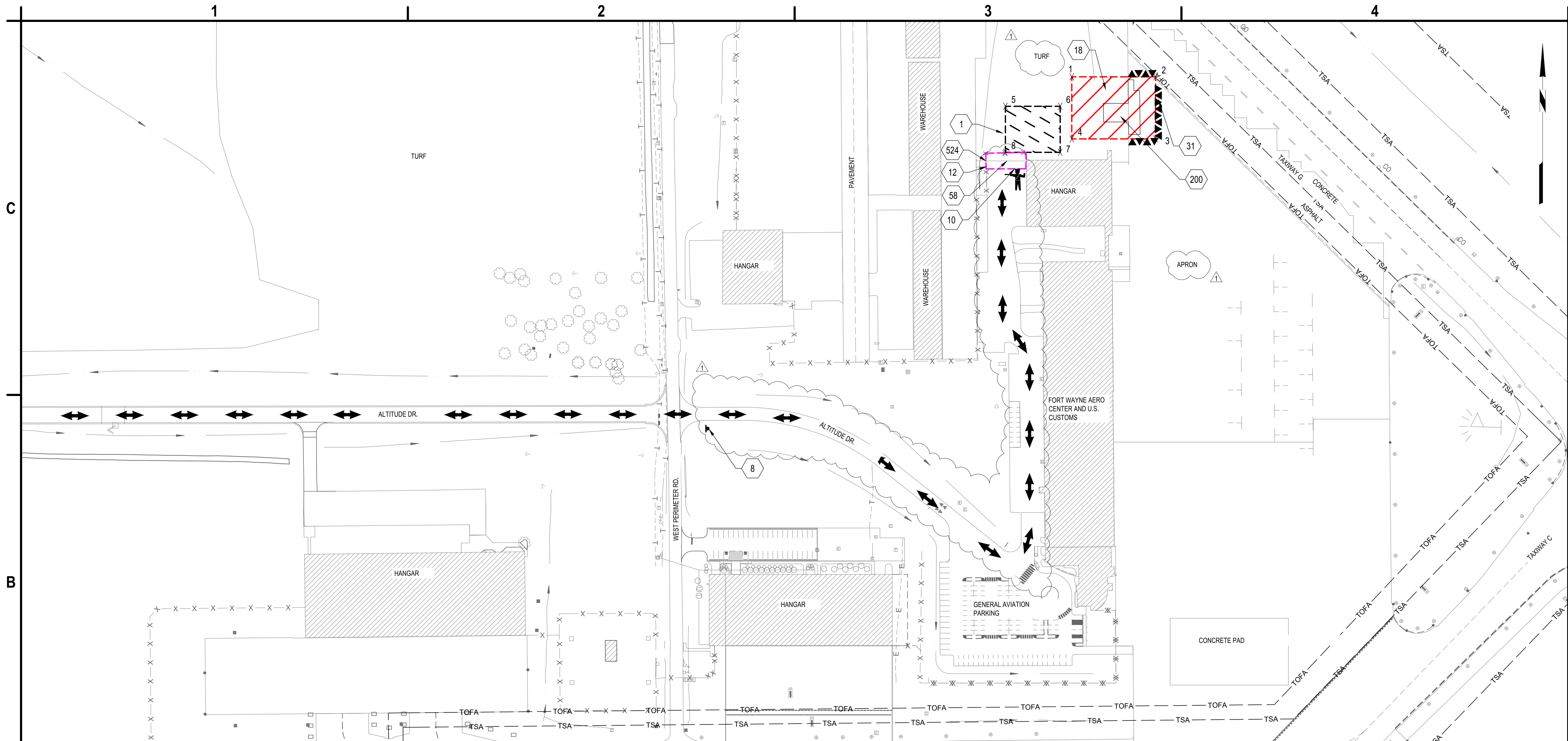
**FORT WAYNE-ALLEN COUNTY AIRPORT AUTHORITY
FORT WAYNE INTERNATIONAL AIRPORT
SELF SERVE FUEL FARM**

In accordance with the FAA General Provisions, Subsection 20-15, Discrepancies and Omissions, the following revisions to the Plans and Specifications shall become a part of the Contract Documents and each bidder shall acknowledge receipt thereof on page ITEMIZED PROPOSAL P-3 of the Proposal Forms.

CONTRACT DRAWINGS:

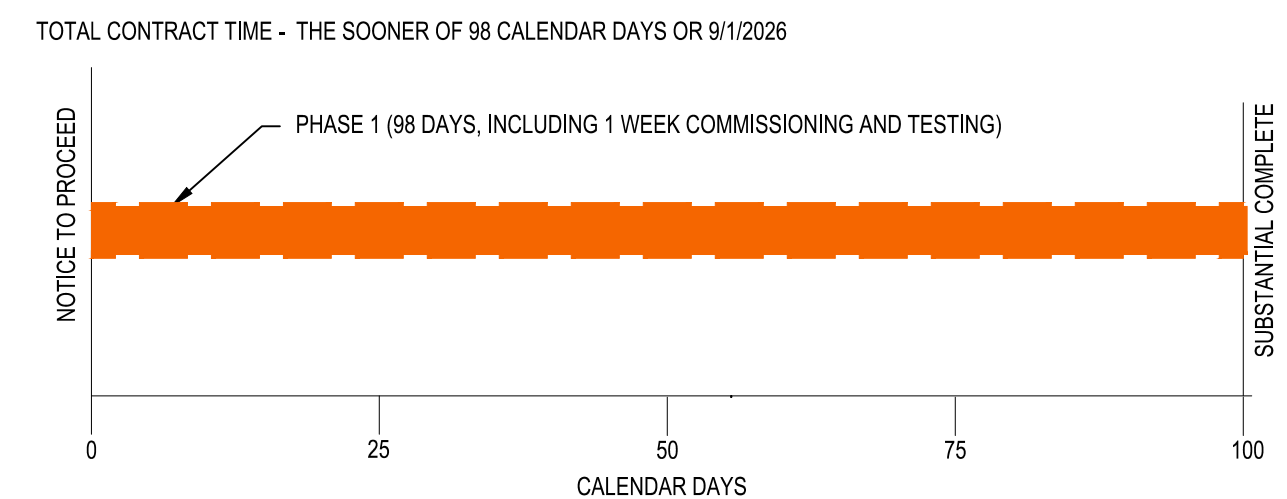
ITEM 1: **REMOVE** in its entirety the following plan sheets and **REPLACE** with the Sheets attached within Attachment A: Sheets GC100, GC101, GC501, CE101, CS101, CS501, CS502, CG101, CG102, CF102.

ATTACHMENT A



B1 CONSTRUCTION SAFETY AND PHASING PLAN - OVERALL
SCALE: 1" = 100'

- ▲▲▲▲▲▲▲▲ BARRICADE LOCATION, SEE DETAIL A1/CG501
- ▨ WORK AREA "A" LIMITS: PHASE 1
- ▨ CONTRACTOR'S STAGING AREA / SPOILS
- ▨ CONTRACTOR PARKING
- ↔ CONSTRUCTION HAUL ROUTE
- ⚓ HAUL ROUTE GATE GUARD
- ▲ CONSTRUCTION TRAFFIC SIGN, SEE DETAIL B3/GC501



- PHASE 1 SUMMARY OF WORK:**
- DEMOLITION OF PAVEMENT
 - INSTALLATION OF NEW FUEL FACILITY INCLUDING ABOVEGROUND STORAGE TANKS, CONCRETE PADS, DRIVE LANES, APRON, AND ALL APPURTENANT EQUIPMENT
 - INSTALLATION AND CONNECTION OF NEW ELECTRICAL AND COMMUNICATION LINES TO FUEL FACILITY
 - INSTALLATION OF COMMUNICATION LINES TO REMOTE GATES
 - INSTALLATION OF STORM DRAINAGE AND CONNECTION TO EXISTING SYSTEM
 - PERMIT AND COMMISSIONING OF NEW FUEL FACILITY
 - 1 - WEEK FACILITY TESTING
 - ANTICIPATED NOTICE TO PROCEED - 5/26/2026
 - FINAL COMPLETION - 9/1/2026

GENERAL PHASING NOTES

1. PRIOR TO CONSTRUCTION, CONTRACTOR AND RPR SHALL VIDEOTAPE / PHOTOGRAPH ALL HAUL ROADS TO BE USED DURING THE PROJECT. THE INFORMATION SHALL BE PROVIDED TO THE OWNER PRIOR TO NTP. ANY DAMAGE TO THE PAVEMENT AS DETERMINED BY THE RPR SHALL BE THE RESPONSIBILITY OF THE CONTRACTOR TO REPAIR, PER RPR. CONTRACTOR SHALL REPAINT HAUL ROAD AT THE COMPLETION OF THE PROJECT, FAA ITEM P-620.
2. HAUL ROUTES, BOULEVARDS, DRIVES, AND AIRFIELD PAVEMENTS SHALL BE KEPT CLEAN BY USE OF A SWEEPER OR BROOM TRUCK CONTINUOUSLY.
4. CONTRACTOR SHALL COORDINATE SCHEDULE, RAMP CLOSURES, AND NOTAMS WITH RPR AND AIRPORT MANAGER PRIOR TO STARTING WORK.
5. CONTRACTOR IS NOT PERMITTED TO CROSS THE AIRPORT'S TAXIWAY OBJECT FREE AREA WITHOUT COORDINATION WITH THE AIRPORT MANAGER AND PROPER TAXIWAY CLOSURES.
6. THE CONTRACTOR SHALL NOT LEAVE THE LIMITS OF WORK AND THE DESIGNATED HAUL ROUTES AS SHOWN ON THE CONTRACT DOCUMENTS UNLESS OTHERWISE AUTHORIZED BY AIRPORT PERSONNEL.
7. ALL AREAS DISTURBED AS A RESULT OF THE CONTRACTOR'S STAGING AND CONSTRUCTION OPERATIONS SHALL BE RESTORED EQUAL TO OR BETTER THAN ORIGINAL CONDITION AT THE CONTRACTOR'S EXPENSE.

1. CONTRACTOR'S STAGING AREA, SEE DETAIL B4/GC501
8. TEMPORARY CONSTRUCTION ACCESS SIGN, ITEM M-100. SEE DETAIL B3/GC501
10. APPROXIMATE LOCATION OF CONTRACTOR'S PERSONNEL PARKING. LOCATION TO BE COORDINATED WITH AIRPORT IN-FIELD. PERSONNEL WILL REQUIRE ESCORT TO AND FROM THE WORK AREA.
12. CONTRACTOR'S ACCESS TO WORK AREAS
18. WORK AREA "A"
31. TEMPORARY LOW PROFILE BARRICADE, SEE DETAIL A1/GC501
58. CONTRACTOR INSTALLED TEMPORARY SWING GATE
200. PROPOSED FUEL FACILITY SEE SHEET CF101
524. ROUTE CONDUIT AND FIBER INTO EXISTING COMM ENCLOSURE AT THE GATE.

A1 LEGEND
SCALE: NOT TO SCALE

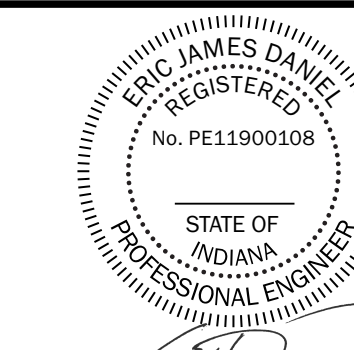
A2 SCHEDULE AND NOTES
SCALE: NOT TO SCALE

A3 SHEET NOTES
SCALE: NOT TO SCALE

A4 KEYED NOTES
SCALE: NOT TO SCALE



C&S Engineers, Inc.
38777 Six Mile Road, Suite 202
Livonia, Michigan 48152
Phone: 734-953-2571
Fax: 734-206-7973
www.cscos.com



Eric James Daniel
DATE: 4/24/2026



**FWA SELF SERVE FUEL FARM
FORT WAYNE-ALLEN COUNTY
AIRPORT AUTHORITY
ALLEN COUNTY, INDIANA**

MARK	DATE	DESCRIPTION
▲	04/24/26	ADDENDUM NO.1
REVISIONS		
PROJECT NO: BL9.001.001		
DATE: APRIL 2026		
DRAWN BY: M. MAHONEY		
DESIGNED BY: E. DANIEL, P.E.		
CHECKED BY: C. CHOBERKA		

**CONSTRUCTION AND
SAFETY PHASING
PLAN - OVERALL**

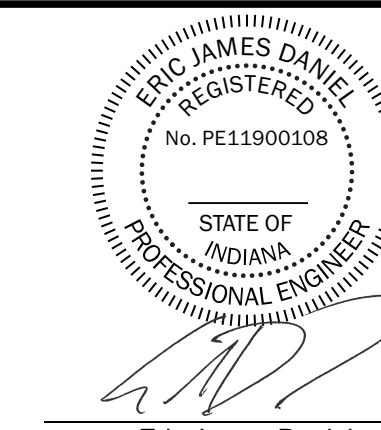
GC100

SHEET NO. 5 OF 28

Apr 24, 2026 - 2:25pm P:\Projects\BL9 - FWA Self Serve Fuel Facility\Design\CAD\Sheet Files\BL9.001.001_GC100.dwg



C&S Engineers, Inc.
 38777 Six Mile Road, Suite 202
 Livonia, Michigan 48152
 Phone: 734-953-2571
 Fax: 734-206-7973
 www.cscos.com



Eric James Daniel
 DATE: 4/24/2026



**FWA SELF SERVE FUEL FARM
 FORT WAYNE-ALLEN COUNTY
 AIRPORT AUTHORITY
 ALLEN COUNTY, INDIANA**

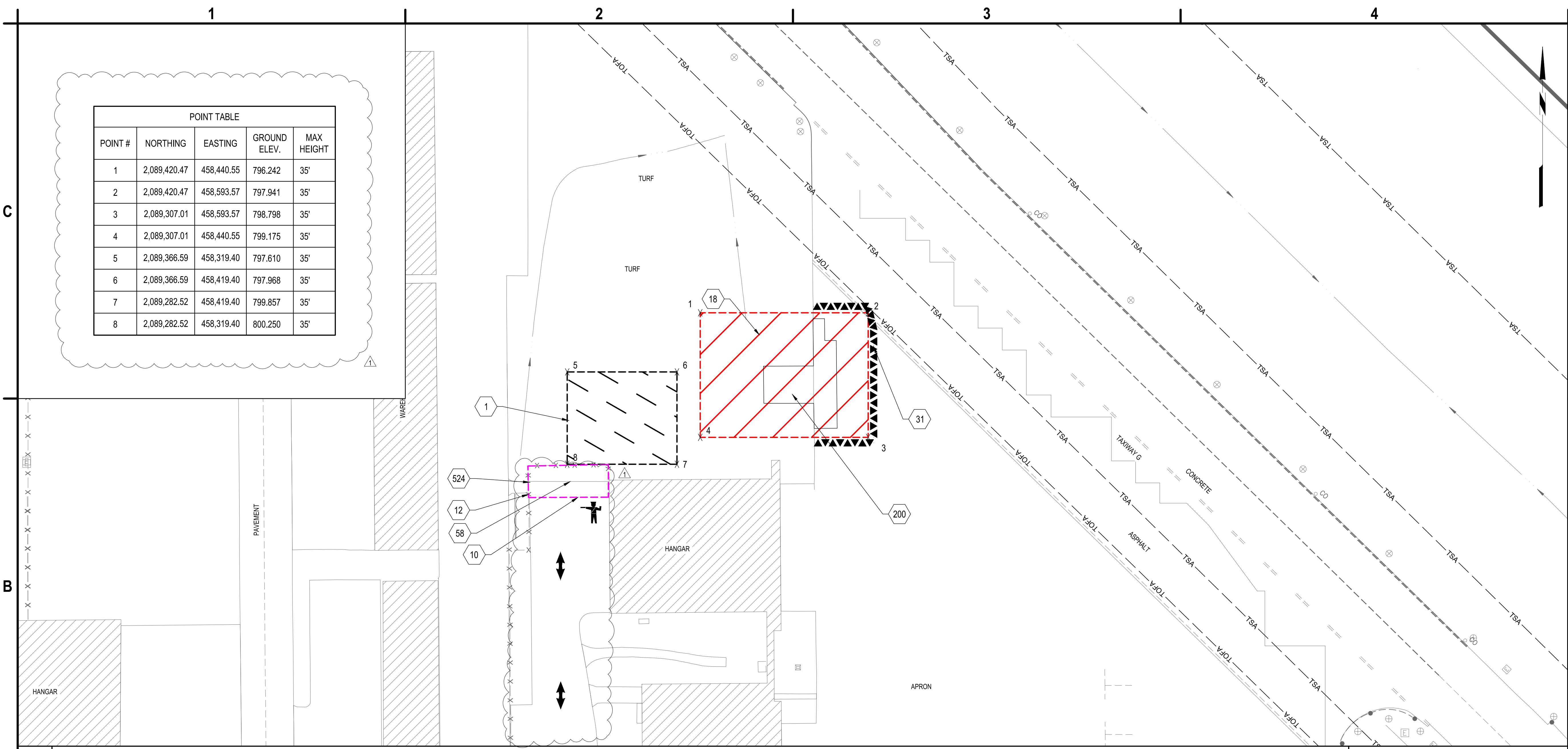
MARK	DATE	DESCRIPTION
	04/24/26	ADDENDUM NO.1
REVISIONS		
		PROJECT NO: BL9.001.001
		DATE: APRIL 2026
		DRAWN BY: M. MAHONEY
		DESIGNED BY: E. DANIEL, P.E.
		CHECKED BY: C. CHOBERKA
CONTRACTOR SHALL VERIFY ALL CONDITIONS ON JOB SITE & NOTIFY THE OWNER OF ANY VARIATIONS FROM DIMENSIONS SHOWN ON THESE DRAWINGS BEFORE PROCEEDING WITH ANY CONSTRUCTION.		

CONSTRUCTION AND SAFETY PHASING PLAN - WORK AREA 1

GC101

SHEET NO. 6 OF 28

Copyright ©



B1 CONSTRUCTION SAFETY AND PHASING PLAN - WORK AREA 1
 SCALE: 1" = 50'

A1 LEGEND	
	BARRICADE LOCATION, SEE DETAIL A1/GC501
	WORK AREA "A" LIMITS: PHASE 1
	CONTRACTOR'S STAGING AREA / SPOILS
	EMPLOYEE PARKING
	CONSTRUCTION HAUL ROUTE
	HAUL ROUTE GATE GUARD
	CONSTRUCTION TRAFFIC SIGN, SEE DETAIL B3/GC501

A2 SHEET NOTES AND POINT TABLE	
GENERAL PHASING NOTES	
1.	PRIOR TO CONSTRUCTION, CONTRACTOR AND RPR SHALL VIDEOTAPE / PHOTOGRAPH ALL HAUL ROADS TO BE USED DURING THE PROJECT. THE INFORMATION SHALL BE PROVIDED TO THE OWNER PRIOR TO NTP. ANY DAMAGE TO THE PAVEMENT AS DETERMINED BY THE RPR SHALL BE THE RESPONSIBILITY OF THE CONTRACTOR TO REPAIR, PER RPR. CONTRACTOR SHALL REPAINT HAUL ROAD AT THE COMPLETION OF THE PROJECT, FAA ITEM P-620.
2.	HAUL ROUTES, BOULEVARDS, DRIVES, AND AIRFIELD PAVEMENTS SHALL BE KEPT CLEAN BY USE OF A SWEEPER OR BROOM TRUCK CONTINUOUSLY.
4.	CONTRACTOR SHALL COORDINATE SCHEDULE, RAMP CLOSURES, AND NOTAMS WITH RPR AND AIRPORT MANAGER PRIOR TO STARTING WORK.
5.	CONTRACTOR IS NOT PERMITTED TO CROSS THE AIRPORTS TAXIWAY OBJECT FREE AREA WITHOUT COORDINATION WITH THE AIRPORT MANAGER AND PROPER TAXIWAY CLOSURES.
6.	PROVIDE FLAGGERS FOR TAXILANE AT ACCESS GATE WHEN CONSTRUCTION TRAFFIC IS ACTIVE WHEN CROSSING THE APRON TO PROJECT LIMITS. THE CONTRACTOR SHALL GIVE WAY TO AIRPORT TRAFFIC AT ALL TIMES DURING THE PROJECT.
7.	THE CONTRACTOR SHALL NOT LEAVE THE LIMITS OF WORK AND THE DESIGNATED HAUL ROUTES AS SHOWN ON THE CONTRACT DOCUMENTS UNLESS OTHERWISE AUTHORIZED BY AIRPORT PERSONNEL.
8.	ALL AREAS DISTURBED AS A RESULT OF THE CONTRACTOR'S STAGING AND CONSTRUCTION OPERATIONS SHALL BE RESTORED EQUAL TO OR BETTER THAN ORIGINAL CONDITION AT THE CONTRACTOR'S EXPENSE.
9.	THE CONTRACTOR SHALL TOPSOIL AND HYDROSEED THE STAGING AREA PER SPECIFICATION T-901 AND T-905, INCIDENTAL TO THE CONTRACT.
10.	MAXIMUM ALLOWABLE HEIGHT IN SPOILS/STAGING AREA SHALL BE 25 FEET.
11.	CONTRACTOR PARKING AREA LOCATION MAY CHANGE DURING CONSTRUCTION AND SHALL BE COORDINATED WITH THE AIRPORT. EMPLOYEES WILL NEED TO BE ESCORTED BY AIRPORT EMPLOYEES THROUGH SECURE AREAS TO THE WORK AREA.

A4 KEYED NOTES	
1.	CONTRACTOR'S STAGING AREA. SEE DETAIL B4/GC501
8.	TEMPORARY CONSTRUCTION ACCESS SIGN, ITEM M-100. SEE DETAIL B3/GC501
10.	APPROXIMATE LOCATION OF CONTRACTOR'S PERSONNEL PARKING. LOCATION TO BE COORDINATED WITH AIRPORT IN-FIELD. PERSONNEL WILL REQUIRE ESCORT TO AND FROM THE WORK AREA.
12.	CONTRACTOR'S ACCESS TO WORK AREAS
18.	WORK AREA "A"
31.	TEMPORARY LOW PROFILE BARRICADE, SEE DETAIL A1/GC501
58.	CONTRACTOR INSTALLED TEMPORARY SWING GATE
524.	ROUTE CONDUIT AND FIBER INTO EXISTING COMM ENCLOSURE AT THE GATE.

POINT TABLE				
POINT #	NORTHING	EASTING	GROUND ELEV.	MAX HEIGHT
1	2,089,420.47	458,440.55	796.242	35'
2	2,089,420.47	458,593.57	797.941	35'
3	2,089,307.01	458,593.57	798.798	35'
4	2,089,307.01	458,440.55	799.175	35'
5	2,089,366.59	458,319.40	797.610	35'
6	2,089,366.59	458,419.40	797.968	35'
7	2,089,282.52	458,419.40	799.857	35'
8	2,089,282.52	458,319.40	800.250	35'

Apr 24, 2026 - 2:25pm
 F:\Projects\BL9 - FWA Self Serve Fuel Facility\Design\CADD\Sheet Files\BL9.001.001_GC101.dwg

Apr 24, 2026, 1:28pm
F:\Projects\BL9-1\FWAA\Drawings\A1\A1-1\Sheet\GC501.dwg

1 2 3 4

C

B

A

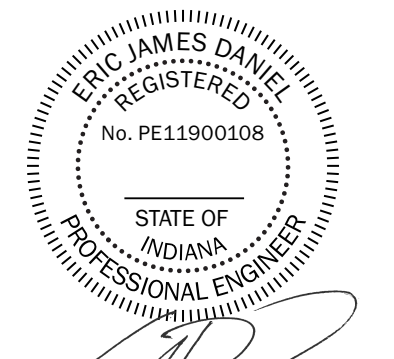
C

B

A



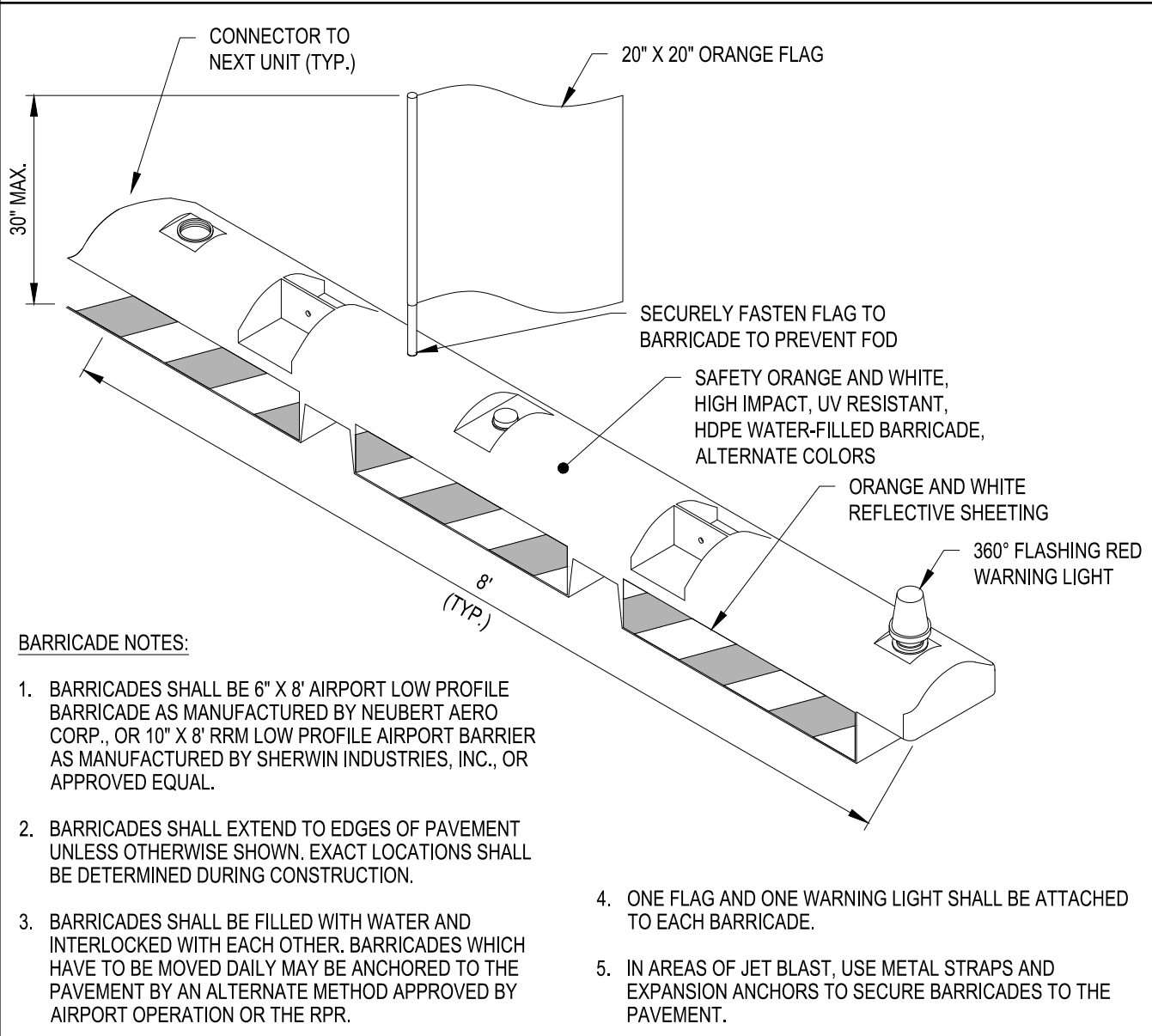
C&S Engineers, Inc.
38777 Six Mile Road, Suite 202
Livonia, Michigan 48152
Phone: 734-953-2571
Fax: 734-206-7973
www.cscos.com



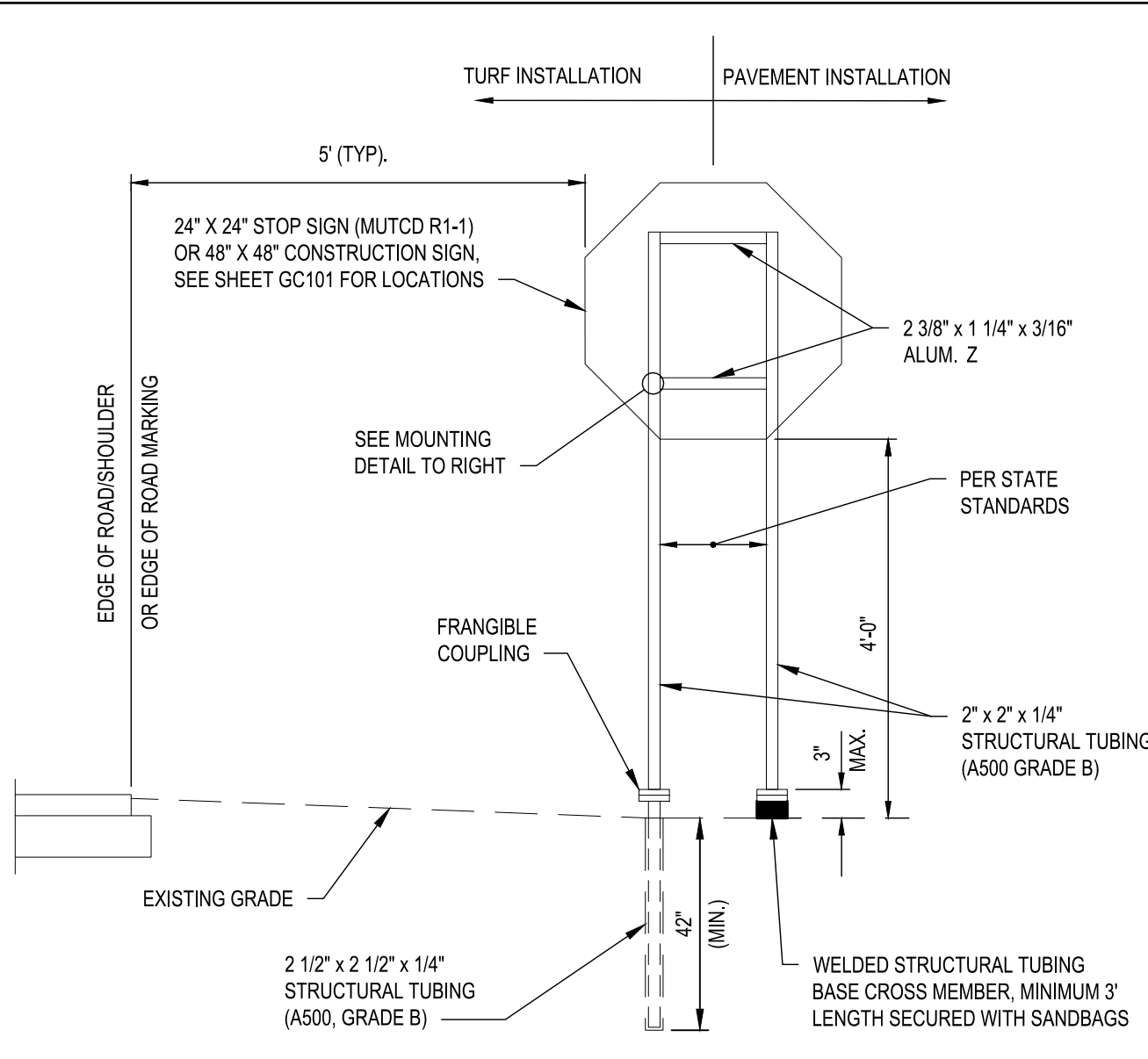
Eric James Daniel
DATE: 4/24/2026



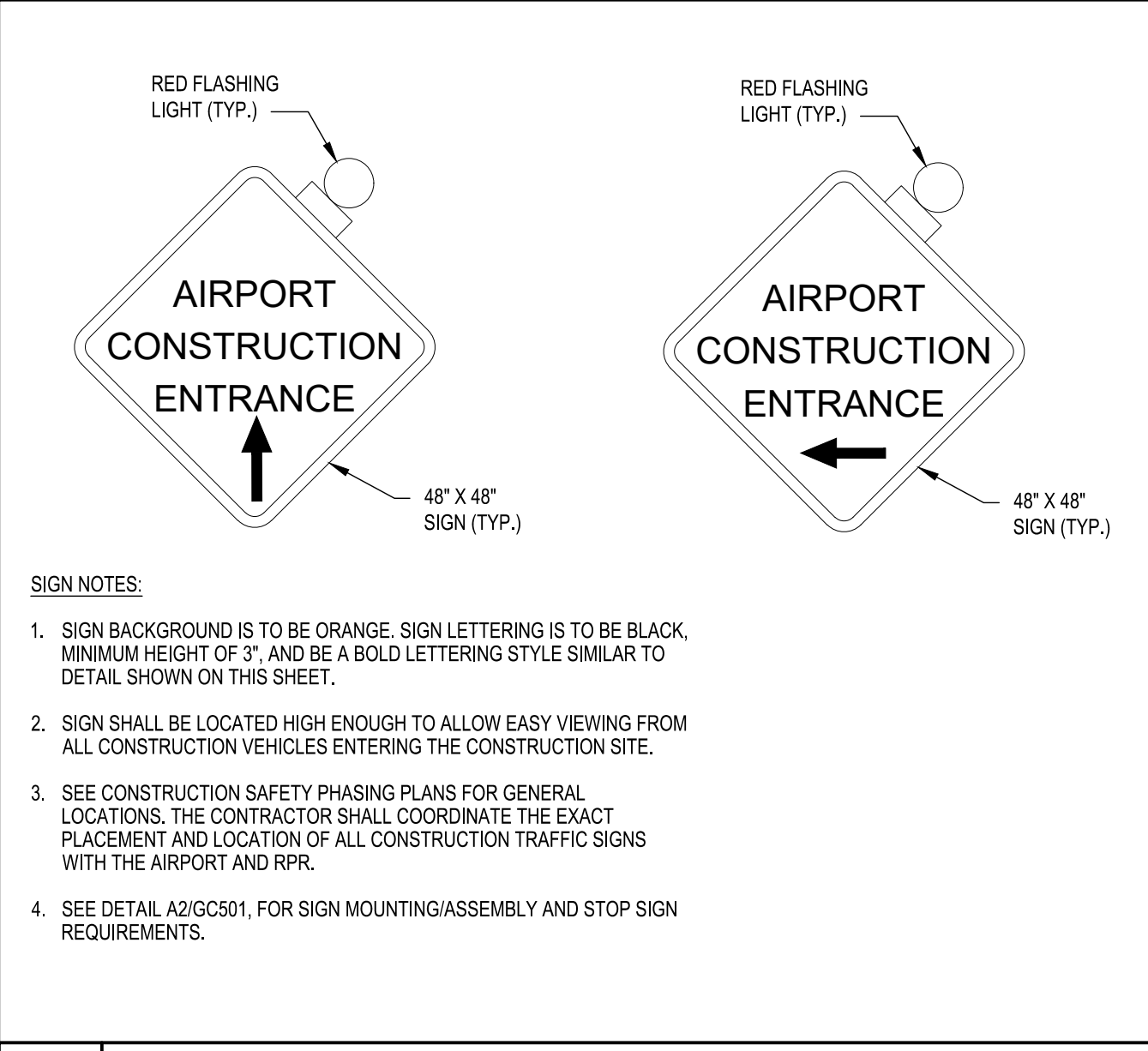
**FWA SELF SERVE FUEL FARM
FORT WAYNE-ALLEN COUNTY
AIRPORT AUTHORITY
ALLEN COUNTY, INDIANA**



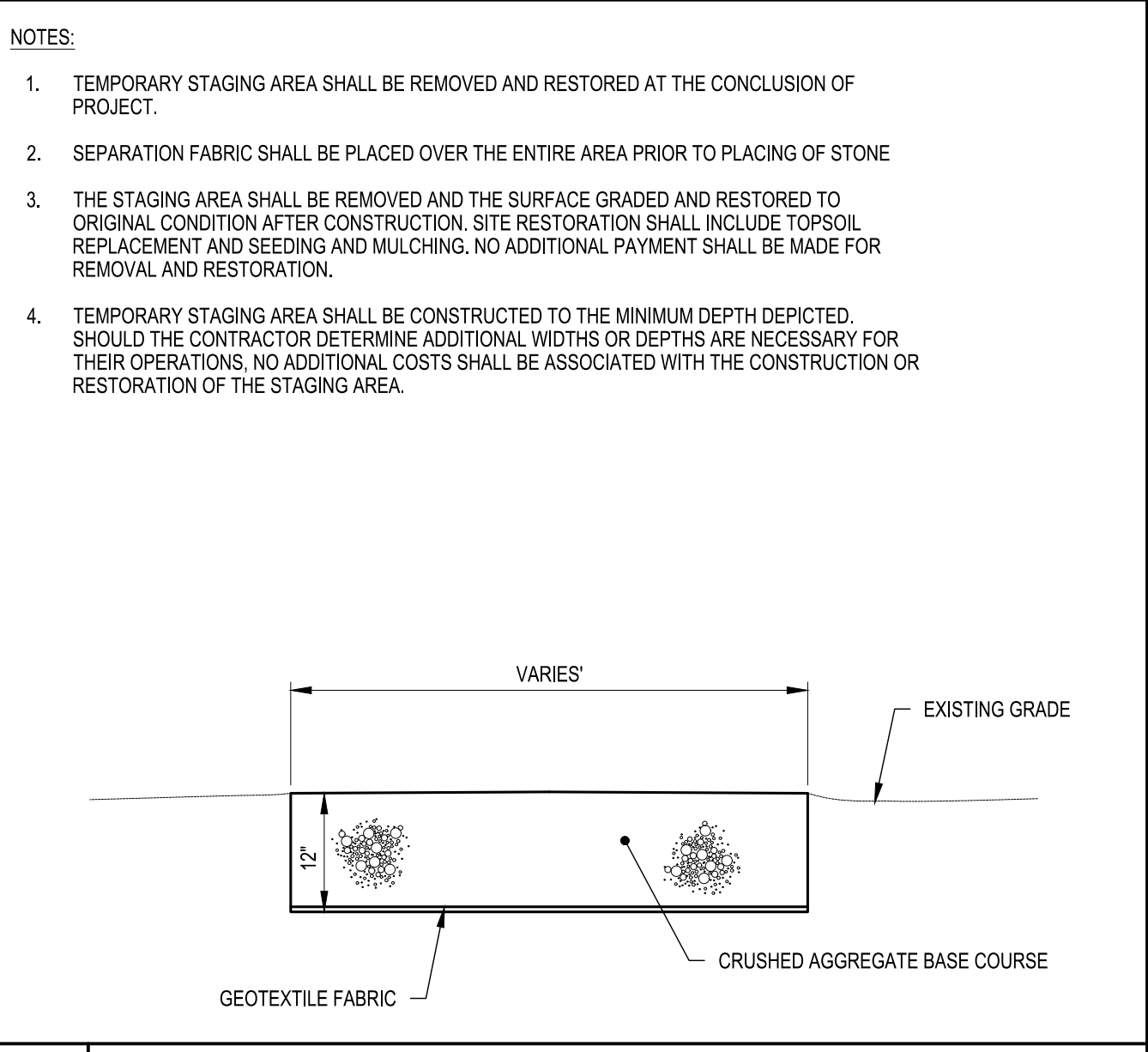
A1 INTERLOCKING AIRFIELD BARRICADE DETAIL
SCALE: NOT TO SCALE



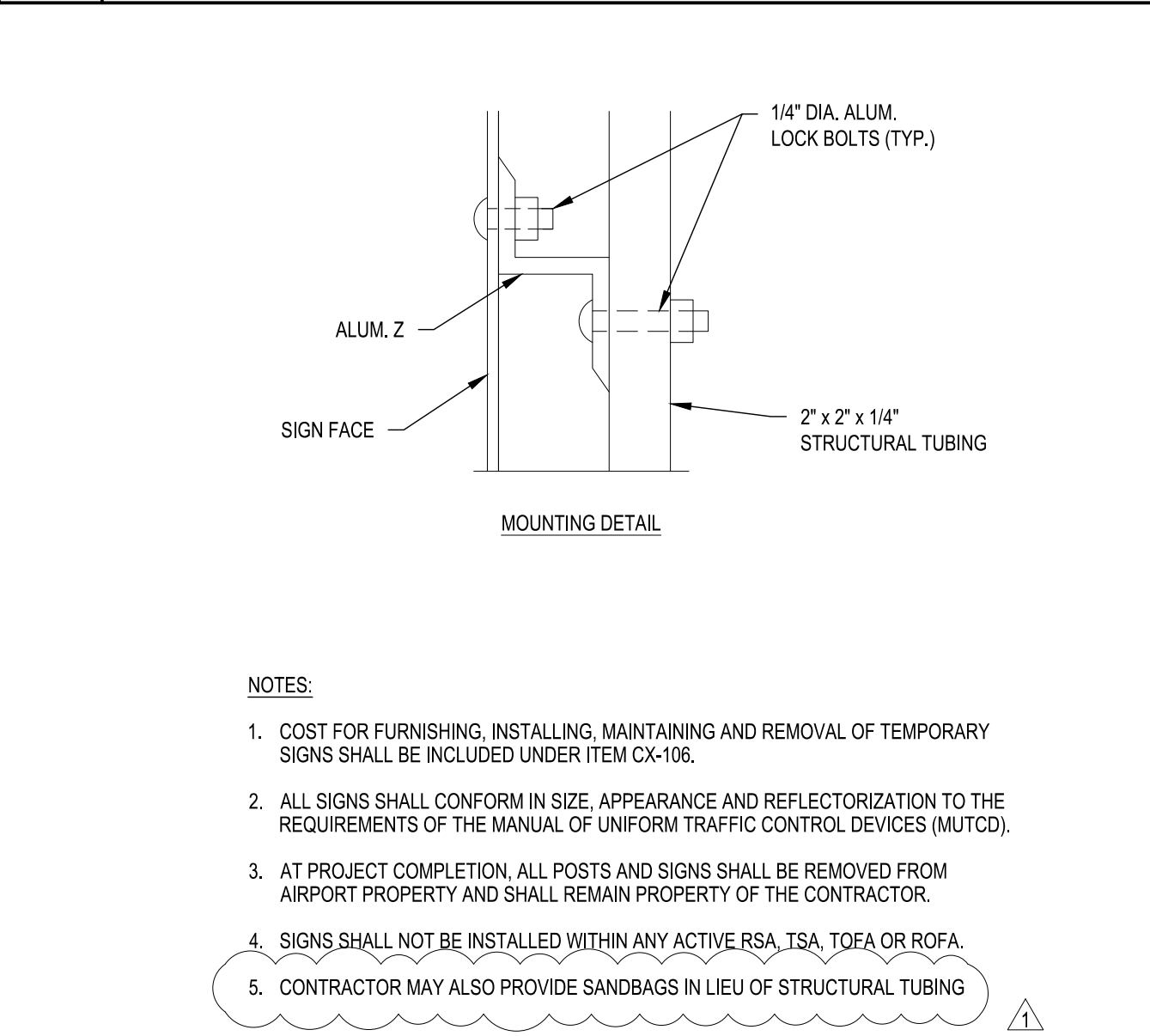
A2 TEMPORARY CONSTRUCTION SIGN ASSEMBLY DETAIL
SCALE: NOT TO SCALE



B3 TEMPORARY CONSTRUCTION SIGN DETAIL
SCALE: NOT TO SCALE



B4 TEMPORARY STAGING AREA
SCALE: NOT TO SCALE



B4 TEMPORARY STAGING AREA
SCALE: NOT TO SCALE

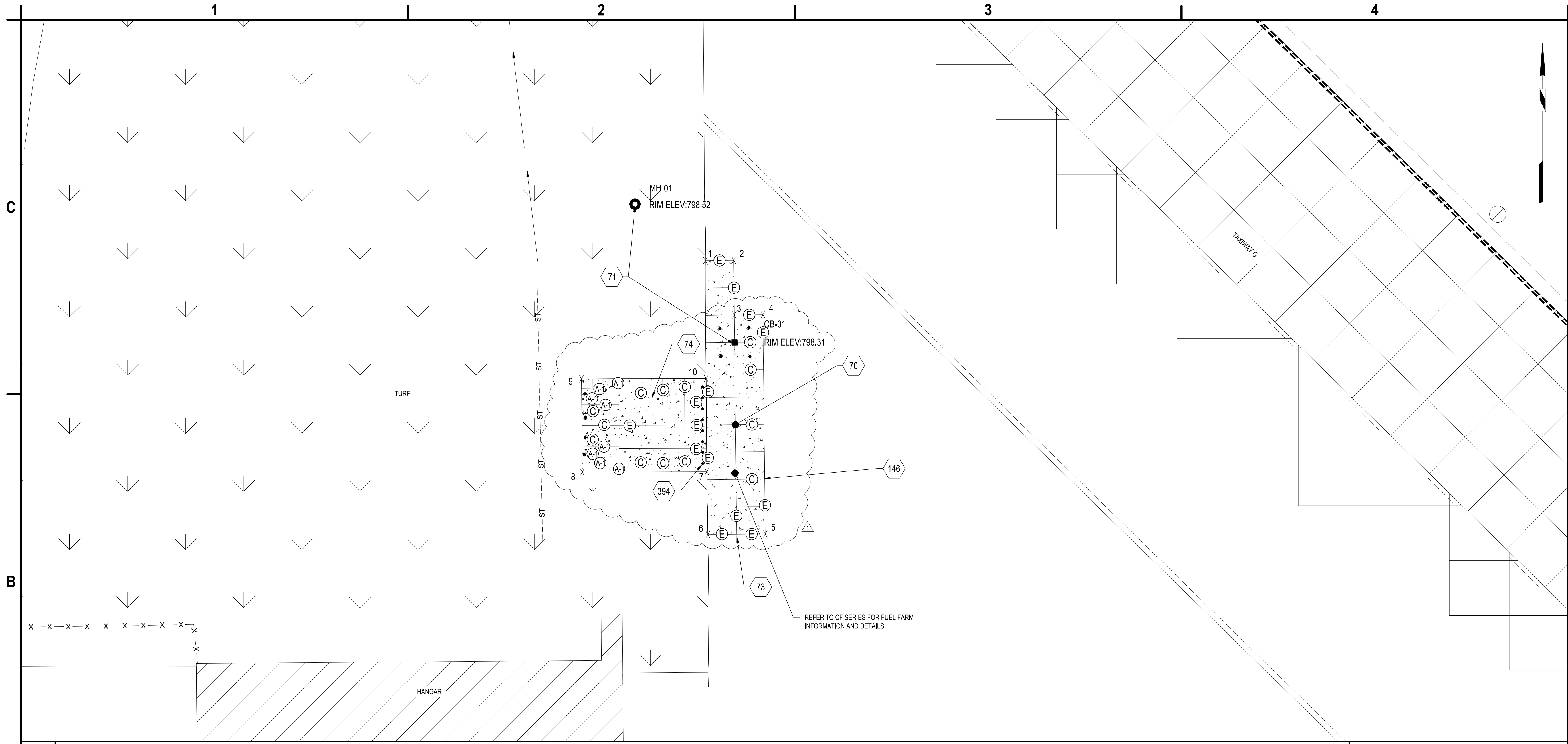
MARK	DATE	DESCRIPTION
	04/24/26	ADDENDUM NO.1

REVISIONS	
PROJECT NO:	BL9.001.001
DATE:	APRIL 2026
DRAWN BY:	M. MAHONEY
DESIGNED BY:	E. DANIEL, P.E.
CHECKED BY:	C. CHOBERKA

CONTRACTOR SHALL VERIFY ALL CONDITIONS ON JOB SITE & NOTIFY THE OWNER OF ANY VARIATIONS FROM DIMENSIONS SHOWN ON THESE DRAWINGS BEFORE PROCEEDING WITH ANY CONSTRUCTION.

CONSTRUCTION SAFETY AND PHASING DETAILS

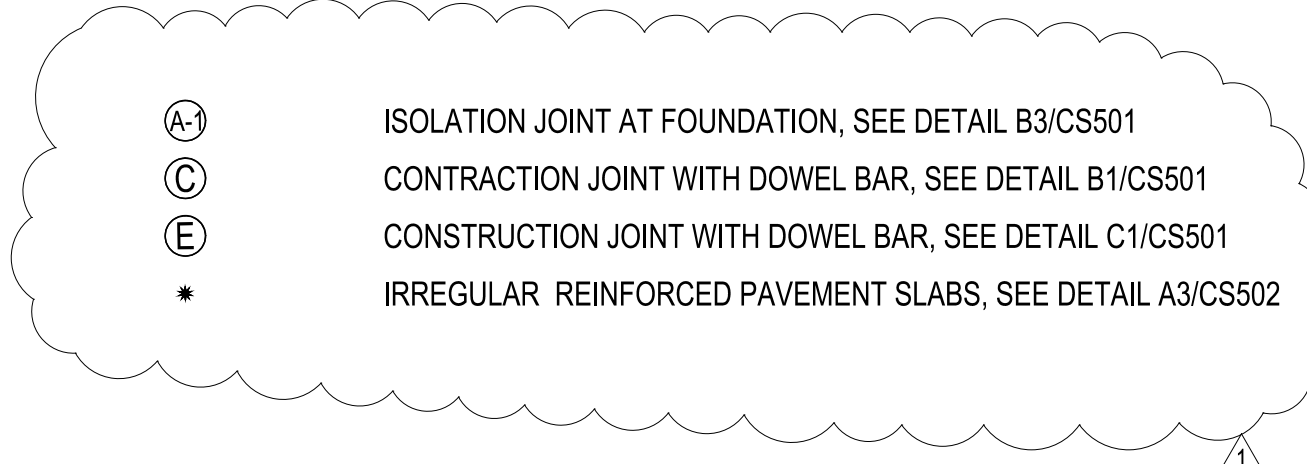
GC501
SHEET NO. 7 OF 28
Copyright ©



B1 GEOMETRY AND PCC JOINT PLAN
SCALE: 1" = 20'

POINT TABLE		
POINT #	NORTHING	EASTING
1	2,089,415.08	458,543.46
2	2,089,415.19	458,553.79
3	2,089,395.19	458,553.98
4	2,089,395.30	458,564.50
5	2,089,315.30	458,565.34
6	2,089,315.08	458,544.36
7	2,089,338.01	458,543.99
8	2,089,337.86	458,498.53
9	2,089,371.86	458,498.23
10	2,089,372.01	458,543.75

- TIE BARS AND DOWELS SHALL BE PROPERLY POSITIONED BY USE OF AN ACCEPTABLE SUPPORT ASSEMBLY.
- SAWED EDGES OF PAVING SHALL BE STRAIGHT, VERTICAL AND SMOOTH.
- JOINTS SHALL BE THOROUGHLY CLEANED BY COMPRESSED WATER OR AIR AND SAND BLASTED PRIOR TO APPLICATION OF THE JOINT SEALANT. CONTRACTOR MUST DEMONSTRATE SAND BLASTING EQUIPMENT IN THE PRESENCE OF THE RPR PRIOR TO APPROVAL PER P-605.
- JOINT FACES SHALL BE DRY PRIOR TO PLACING SEALANT MATERIALS.
- TIE BARS AND DOWELS BARS SHALL BE CENTERED ON THE JOINT, AND PLACED AT MID-SLAB UNLESS OTHERWISE SHOWN.



- NOTES:**
- REFER TO THE EL SERIES FOR ELECTRICAL AND COMMUNICATION PLAN FOR ALL WORK ASSOCIATED WITH SITE LIGHTING, POWER DISTRIBUTION AND CABLING, COMMUNICATIONS AND FIBER OPTIC WORK.
 - REFER TO THE CF SERIES FOR FUEL FARM INFORMATION AND DETAILS.
 - CONTRACTOR TO LINE PROPOSED CONCRETE JOINTS WITH EXISTING JOINT FACES.
 - FINAL LOCATION OF BOLLARDS TO BE COORDINATED WITH AIRPORT IN FIELD.

- PROPOSED CONCRETE PAVEMENT, SEE DETAIL A1/CS502
- PROPOSED DRAINAGE STRUCTURES, REFER TO GRADING AND DRAINAGE PLAN SHEET CG101
- PROPOSED FUEL FACILITY CONCRETE PAD, REFER TO FUEL FACILITY LAYOUT PLAN SHEET CF101
- MEET EXISTING PAVEMENT, SEE DETAIL C1/CS501
- BOLLARD (TYP.). SEE DETAIL C1/CS502.

A1 GEOMETRY POINT TABLE
SCALE: NOT TO SCALE

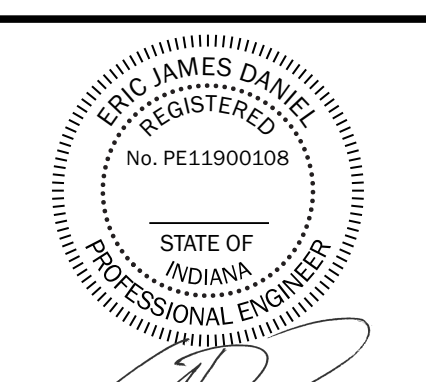
A2 CONCRETE NOTES
SCALE: NOT TO SCALE

A3 NOTES
SCALE: NOT TO SCALE

A4 KEYED NOTES
SCALE: NOT TO SCALE



C&S Engineers, Inc.
38777 Six Mile Road, Suite 202
Livonia, Michigan 48152
Phone: 734-953-2571
Fax: 734-206-7973
www.cscos.com



Eric James Daniel
DATE: 4/24/2026



**FWA SELF SERVE FUEL FARM
FORT WAYNE-ALLEN COUNTY
AIRPORT AUTHORITY
ALLEN COUNTY, INDIANA**

MARK	DATE	DESCRIPTION
△	04/24/26	ADDENDUM NO.1

REVISIONS	
PROJECT NO:	BL9.001.001
DATE:	APRIL 2026
DRAWN BY:	M. MAHONEY
DESIGNED BY:	C. CHOBERKA
CHECKED BY:	E. DANIEL, P.E.

CONTRACTOR SHALL VERIFY ALL CONDITIONS ON JOB SITE & NOTIFY THE OWNER OF ANY VARIATIONS FROM DIMENSIONS SHOWN ON THESE DRAWINGS BEFORE PROCEEDING WITH ANY CONSTRUCTION.

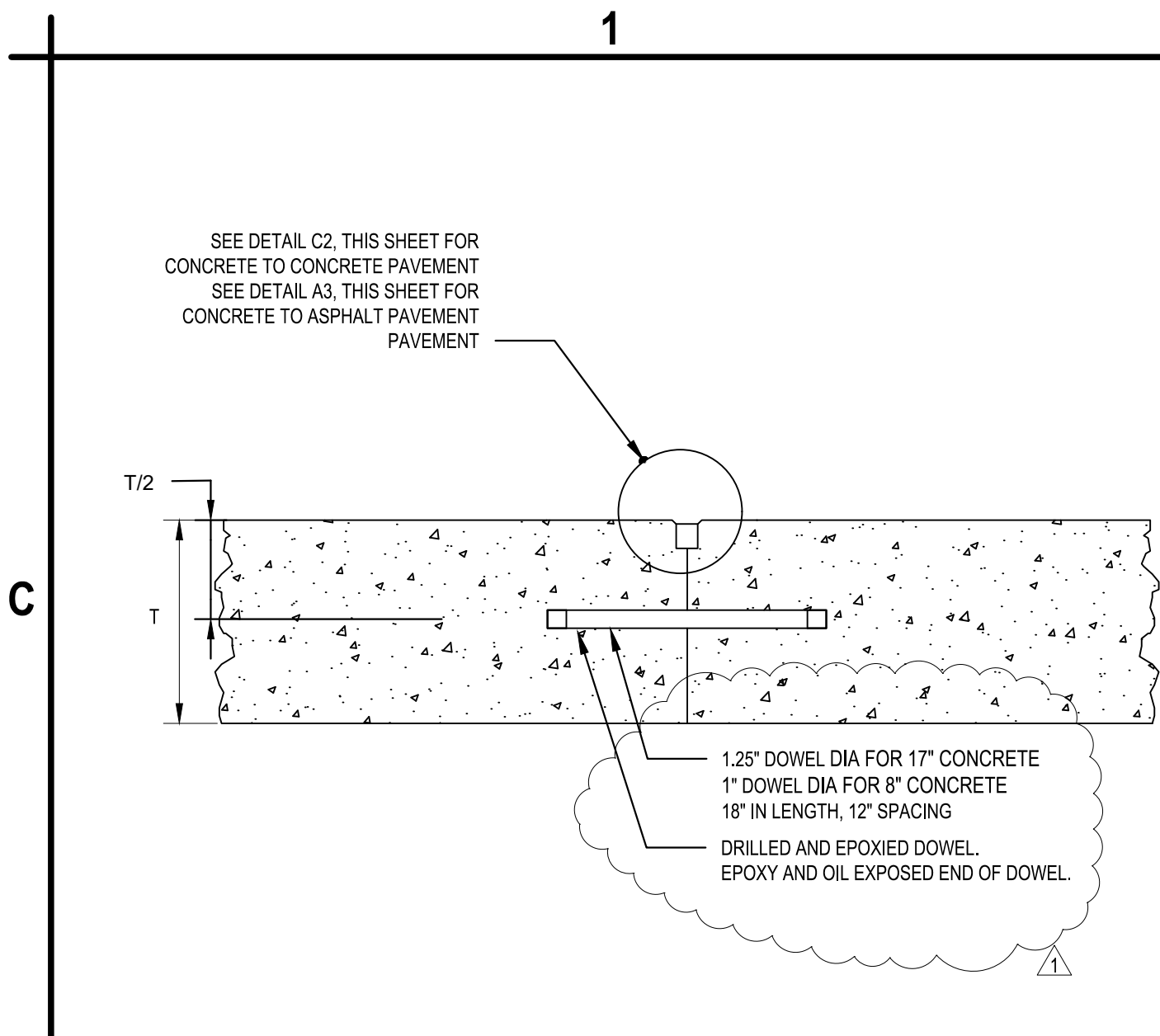
GEOMETRY AND PCC JOINT PLAN

CS101

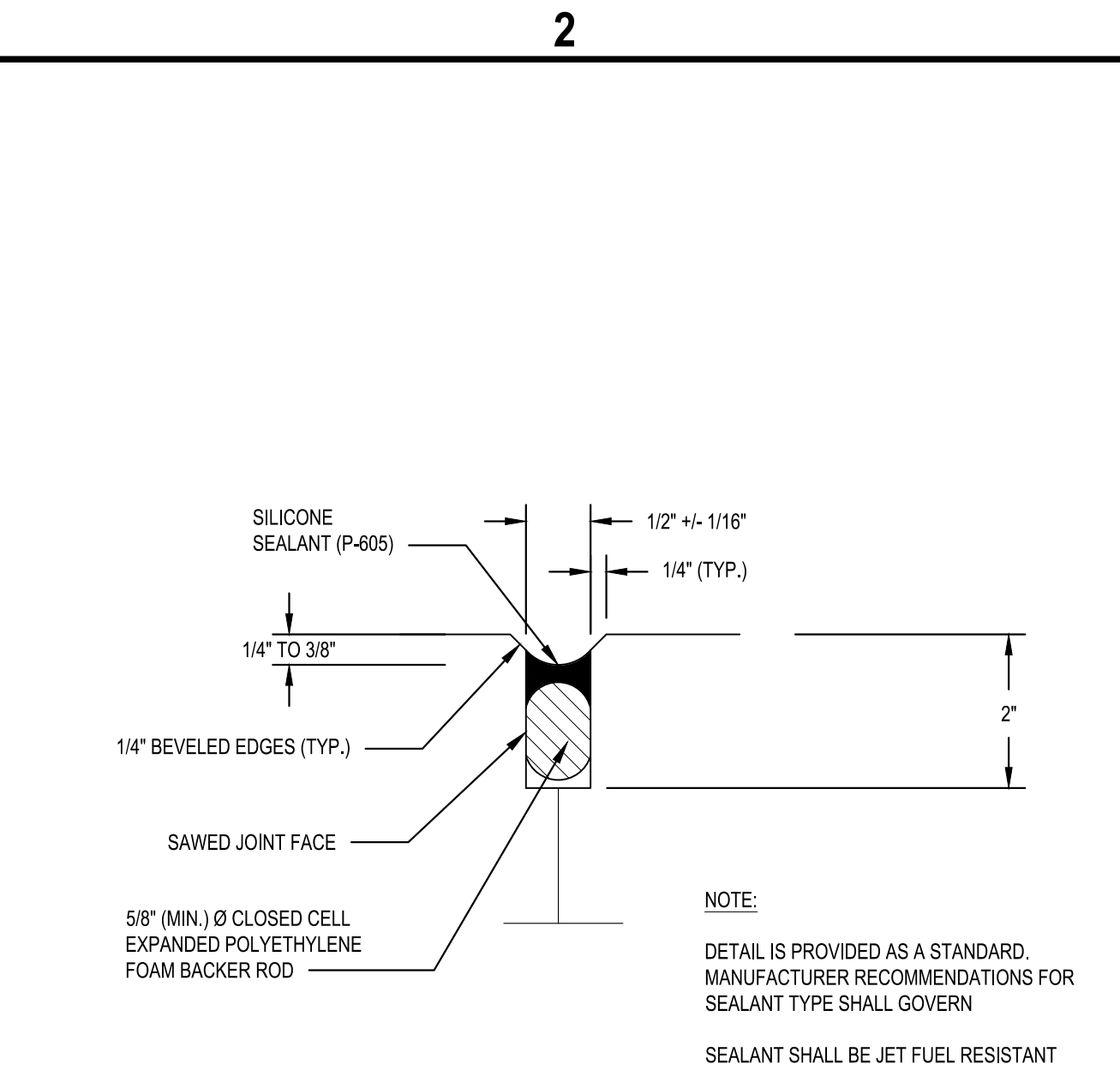
SHEET NO. 11 OF 28

Apr 24, 2026 - 1:28pm P:\Projects\BL9 - FWA Self Serve Fuel Facility\Design\CADD\Sheet Files\BL9\0101_CS101.dwg

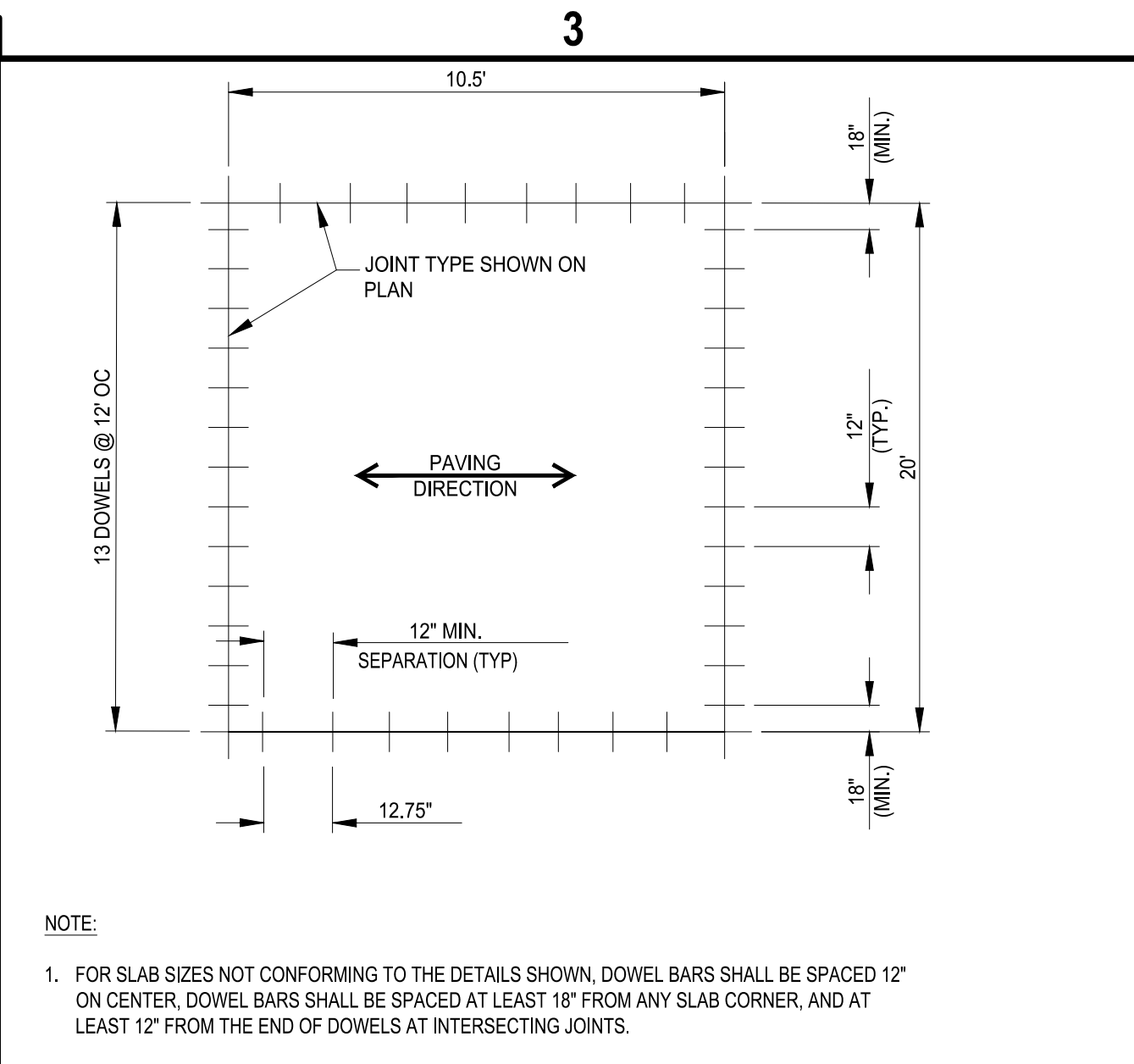
Apr 24, 2026 - 1:28pm
 P:\Projects\BLD - Ft Wayne-Allen County Airport Authority\BLD\001001 - Self Serve Fuel Facility\Design\CADD\Sheet Files\CS501 SITE DETAILS.rvt



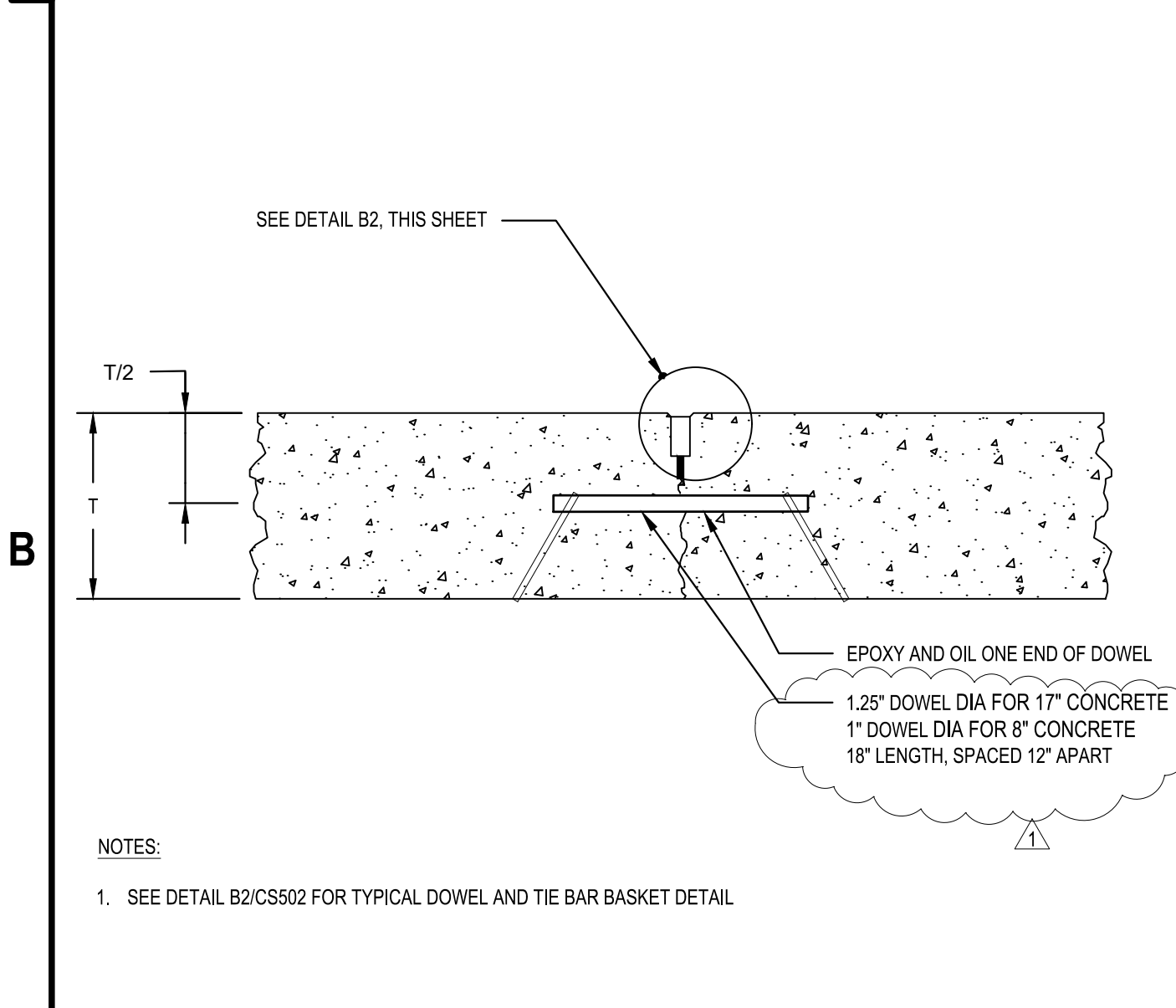
C1 DOWELED CONSTRUCTION JOINT SECTION
SCALE: NOT TO SCALE



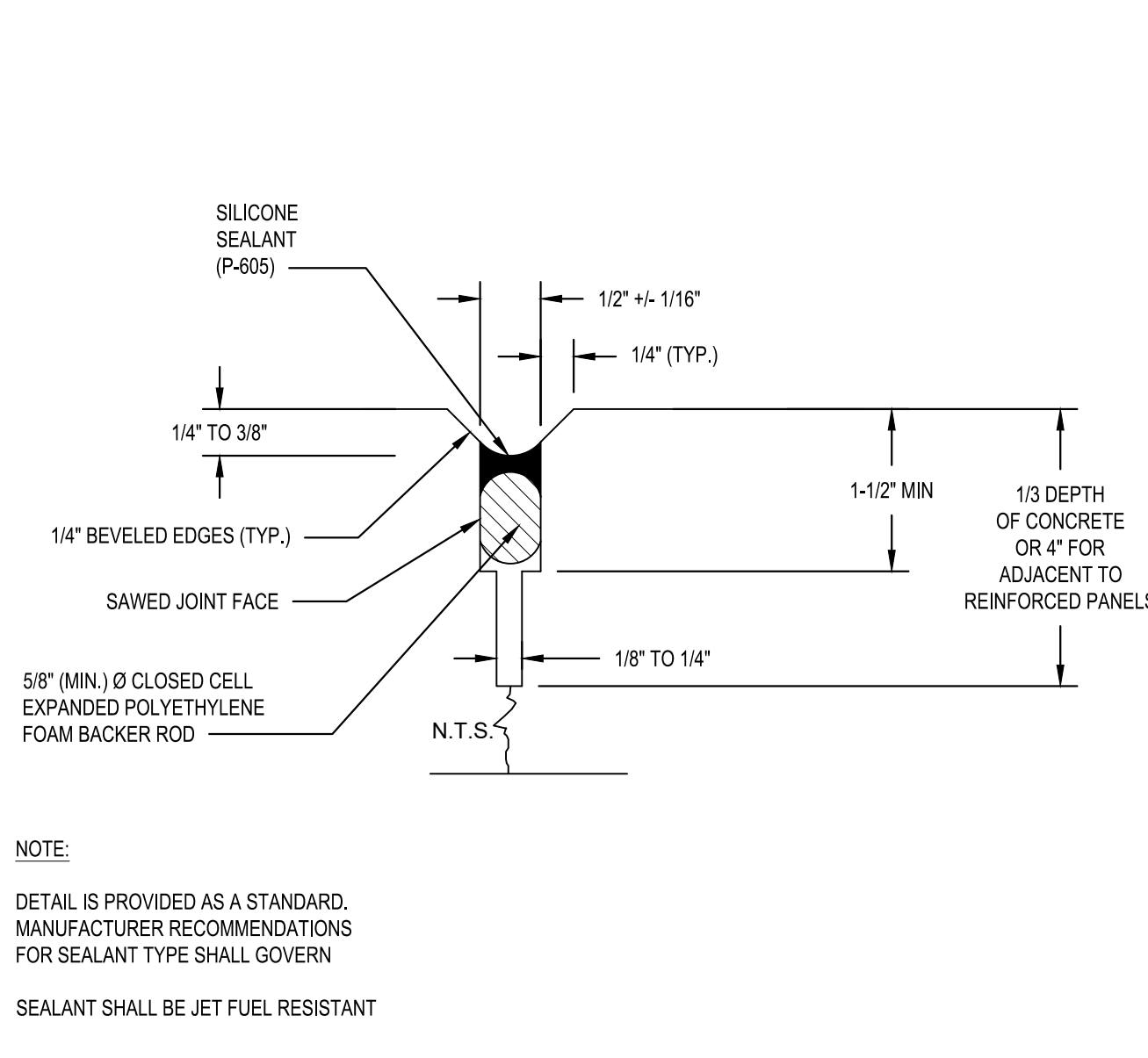
C2 CONSTRUCTION JOINT
SCALE: NOT TO SCALE



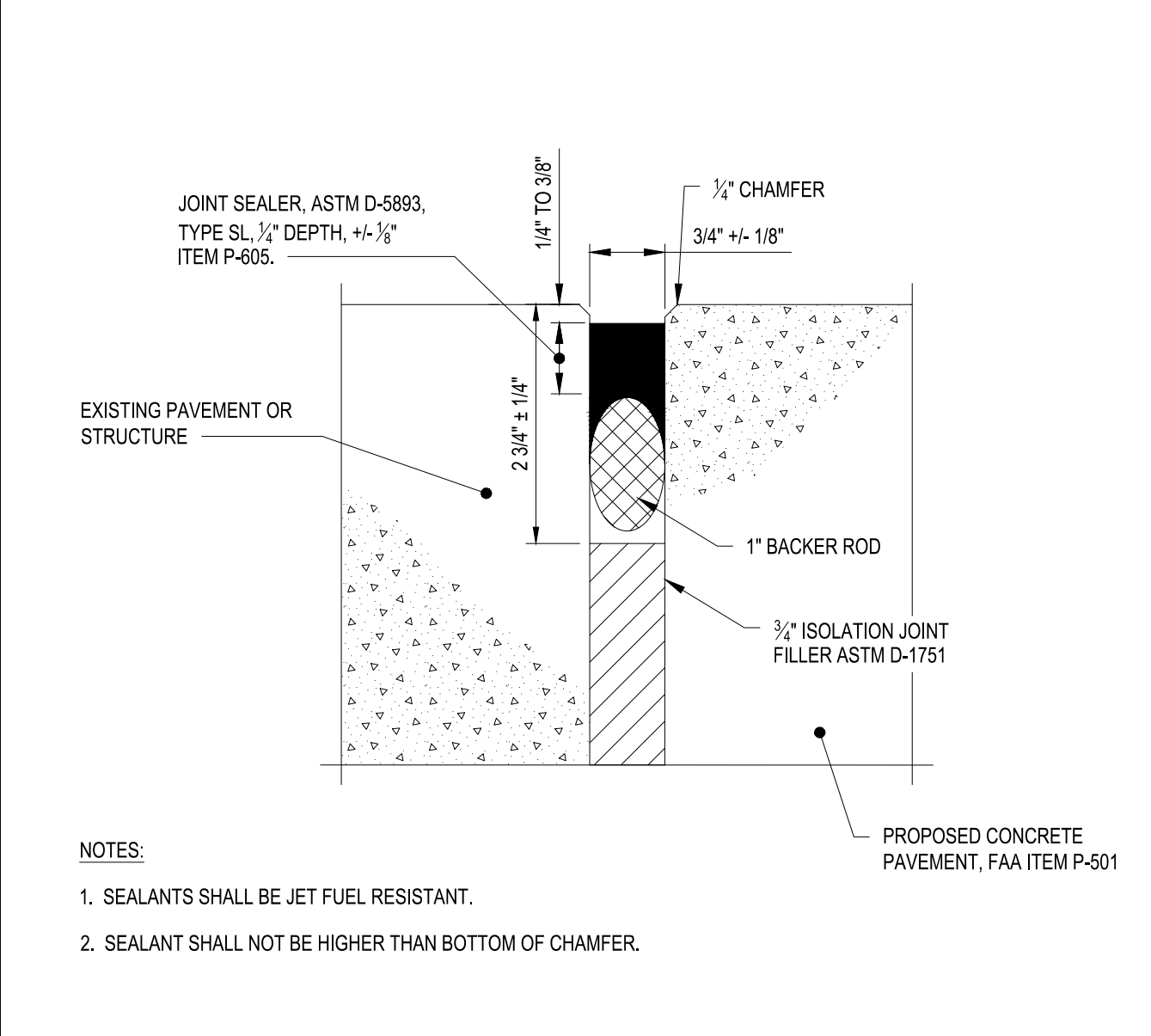
C3 TYP. DOWEL SPACING
SCALE: NOT TO SCALE



B1 DOWELED CONSTRUCTION JOINT SECTION
SCALE: NOT TO SCALE



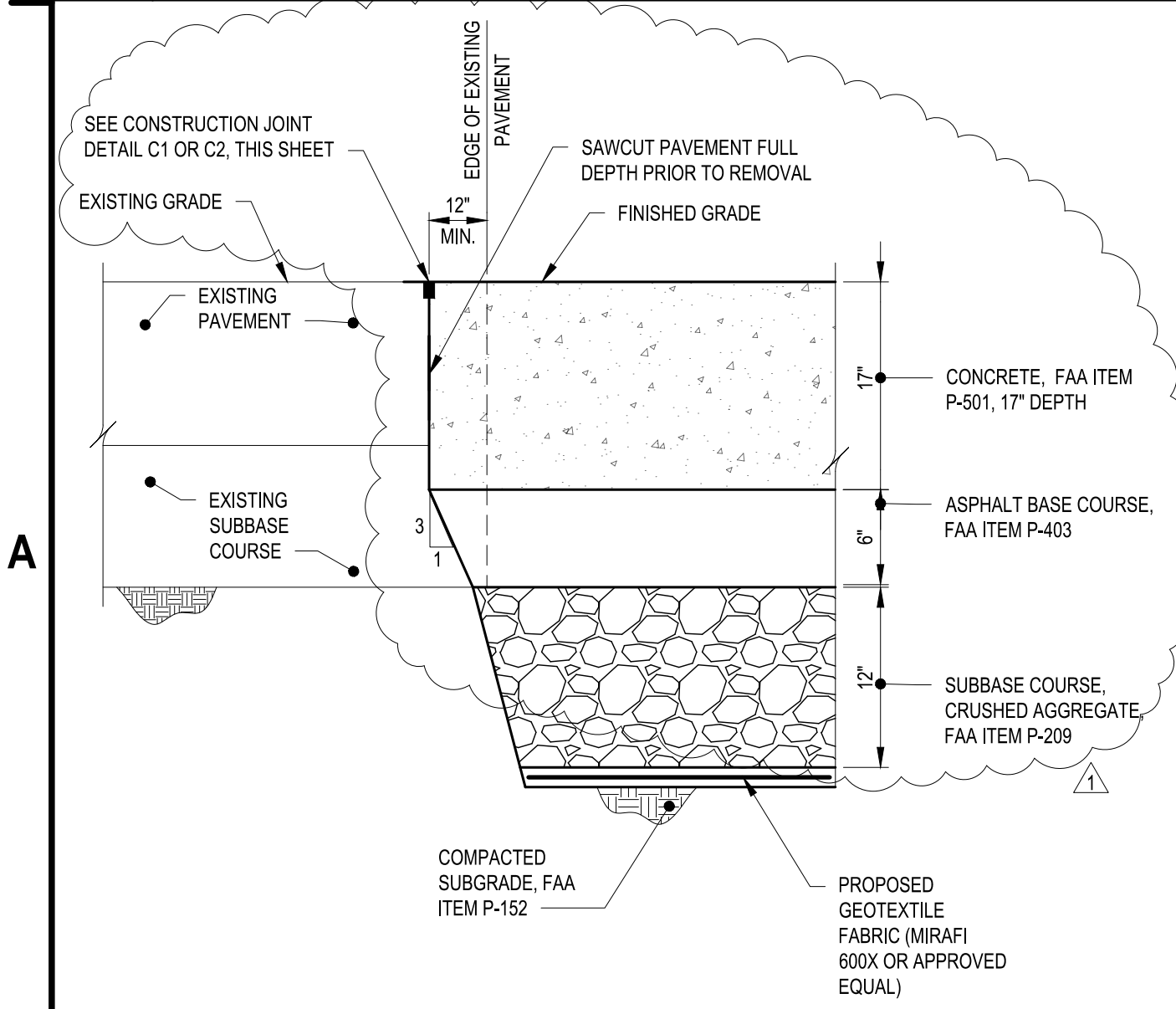
B2 CONSTRUCTION JOINT
SCALE: NOT TO SCALE



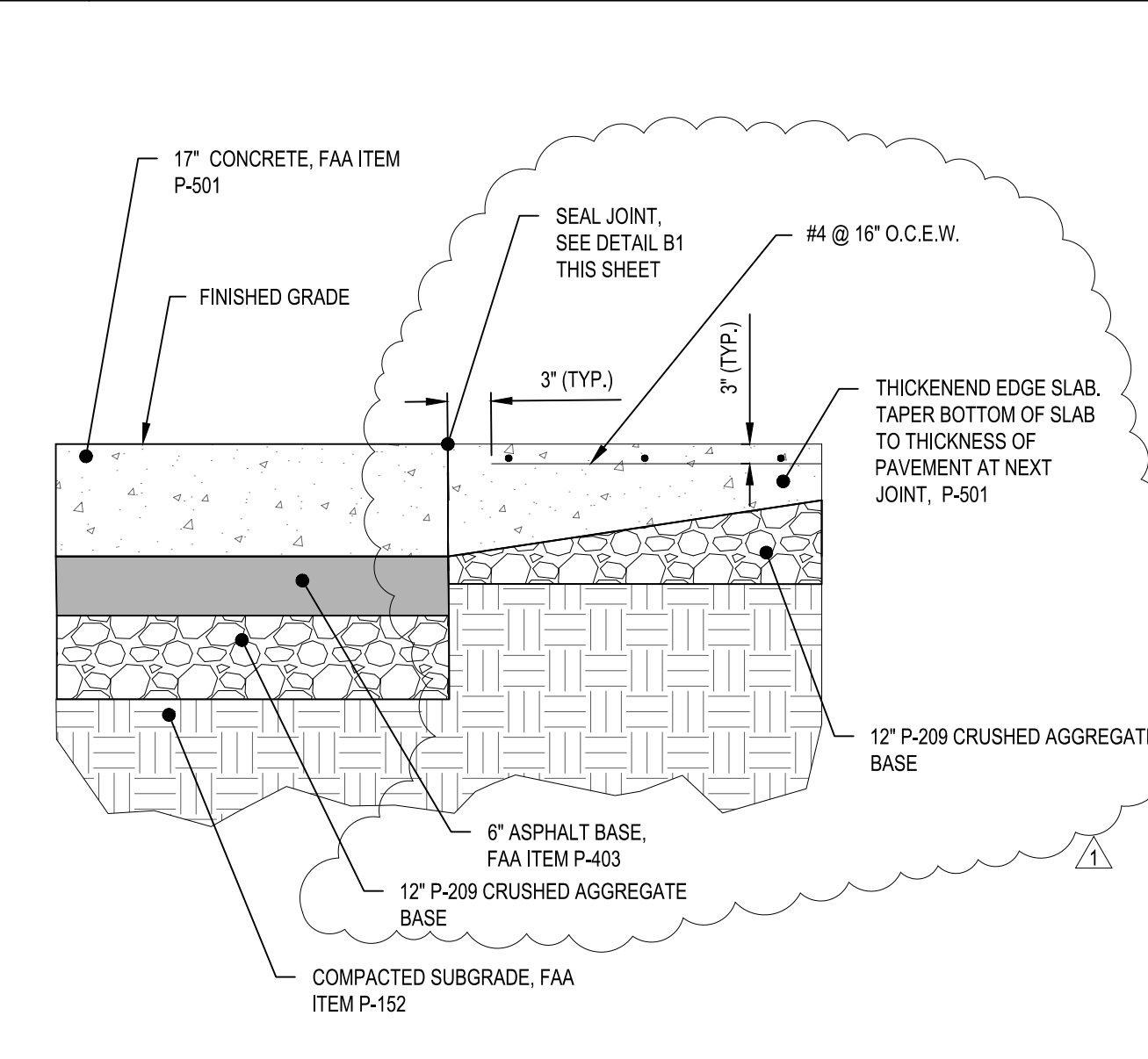
B3 ISOLATION JOINT
SCALE: NOT TO SCALE

- NOTES:**
- DOWELS SHALL BE EPOXY COATED AND COATED WITH A BOND BREAKER PER ITEM P-501.
 - AFTER INSERTION AND GROUTING IN PLACE OF DOWELS ALONG CONSTRUCTION JOINT, FREE END SHALL BE GREASED AS DESCRIBED IN NOTE 3 BELOW.
 - DOWELS SHALL BE LIGHTLY GREASED WITH A THIN COAT OF HIGH MELTING POINT GREASE OR AN APPROVED EQUIVALENT PRIOR TO INSTALLATION ALONG CONTRACTION JOINTS.
 - ALL CONSTRUCTION JOINT DOWELS SHALL BE GANG-DRILLED AND EPOXY GROUTED. INSERTION EQUIPMENT WILL NOT BE PERMITTED.
 - DRILLING METHOD FOR DOWELS SHALL BE CAPABLE OF MAINTAINING DRILL HOLES PARALLEL TO THE CONCRETE SURFACE AND PERPENDICULAR TO THE JOINT DIRECTION. DRILL HOLES SHALL BE ACCURATELY LAID OUT SO THAT THE MAXIMUM DEVIATION DOES NOT EXCEED 3/8" FT HORIZONTALLY. DRILL HOLE DIAMETER TO BE OF SUFFICIENT SIZE TO ACCEPT THE TYPE AND SIZE OF REQUIRED DOWEL.
 - AFTER DRILLING IS COMPLETE AND PRIOR TO THE INSTALLATION OF THE DOWELS, THE DRILLED HOLES SHALL BE THOROUGHLY CLEANED TO REMOVE DRILLING DUST, CONCRETE CHIPS AND ANY OTHER MATERIAL THAT MAY HINDER PROPER BONDING.
 - CONTRACTOR WILL NOT BE PERMITTED TO DIP DOWEL IN EPOXY BEFORE INSERTING DOWEL. EPOXY GROUT SHALL BE INJECTED UNIFORMLY TO FILL THE ENTIRE CIRCUMFERENCE OF THE DRILLED DOWEL HOLE. CONTRACTOR TO INJECT SUFFICIENT AMOUNT OF EPOXY MATERIAL IN THE HOLE SO THAT A SLIGHT AMOUNT WILL BE FORCED OUT WHEN THE DOWEL IS INSERTED AND TAPPED IN PLACE. THE CONTRACTOR IS PERMITTED TO USE SMALL WEDGES TO PROVIDE SUPPORT TO THE DOWELS TO KEEP THEM IN THEIR PROPER LOCATION UNTIL THE EPOXY MATERIAL HARDENS. THE TOLERANCE FOR DOWEL ALIGNMENT IN EITHER THE HORIZONTAL OR VERTICAL PLANE IS 1/4" PER FOOT OF DOWEL BAR.
 - ALL CONSTRUCTION JOINT DOWELS SHALL BE INSTALLED USING AN ENGINEER APPROVED WELDED BASKET ASSEMBLY ANCHORED TO THE CEMENT TREATED BASE COURSE WITH A MINIMUM OF 4 GALVANIZED STRAPS AND NAILS PER ASSEMBLY. THE CONTRACTOR MUST POSITION ANCHOR STRAPS ON ALTERNATING SIDES OF THE BASKET ASSEMBLY.
 - A TRANSVERSE CONSTRUCTION JOINT SHALL BE INSTALLED AT A PLANNED JOINT WHEN PAVING OPERATIONS ARE INTERRUPTED FOR MORE THAN A HALF AN HOUR (30 MINUTES). IF AN INTERRUPTION OCCURS BETWEEN PLANNED JOINTS, THE FRESH CONCRETE SHALL BE REMOVED BACK TO THE PREVIOUSLY PLANNED JOINT. NO MID-SLAB JOINTS WILL BE ALLOWED BETWEEN THE JOINTS SHOWN WITHIN THESE PLANS.
 - EDGES OF CONCRETE SLABS SHALL BE COVERED WITH AN APPROVED CURING MATERIAL AT THE SAME TIME AS THE SURFACE IS CURED. AT FORMED LOCATIONS, SLAB SIDES SHALL BE CURED WHEN FORMS ARE REMOVED, OR THE TRANSFORMERS SHALL REMAIN IN PLACE UNTIL THE CONCRETE HAS CURED.
 - IN THICKENED EDGE AREAS WHERE DOWELS OR REINFORCING STEEL ARE REQUIRED, PROVIDE ADDITIONAL SUPPORT AS APPROVED BY THE ENGINEER TO MAINTAIN THE SAME DEPTH FROM THE SURFACE.
 - CONCRETE IN REINFORCED PANELS SHALL BE PLACED IN ONE COURSE. ALL REINFORCEMENT SHALL BE INSTALLED USING ENGINEER APPROVED H-CHAIRS ANCHORED TO THE CEMENT TREATED BASE COURSE OR AGGREGATE BASE COURSE AT A MAXIMUM OF 3" ON CENTER. THE REINFORCEMENT MUST RETAIN ITS SPECIFIED POSITION DURING THE PLACEMENT OF THE CONCRETE.
 - THE CONTRACTOR WILL NOT BE PERMITTED TO VIBRATE THE REINFORCEMENT DOWN FROM THE TOP AFTER THE CONCRETE IS POURED.
 - SEE THE PCC JOINT LAYOUT PLAN FOR AREAS THAT REQUIRE STEEL REINFORCEMENT STEEL.
 - TIE BARS AND DOWELS SHALL BE PROPERLY POSITIONED BY USE OF AN ACCEPTABLE SUPPORT ASSEMBLY.
 - SAWED EDGES OF PAVING SHALL BE STRAIGHT, VERTICAL AND SMOOTH.
 - JOINTS SHALL BE THOROUGHLY CLEANED BY COMPRESSED WATER OR AIR PRIOR TO APPLICATION OF THE JOINT SEALANT PER P-605 SPEC.
 - JOINT FACES SHALL BE DRY PRIOR TO PLACING SEALANT MATERIALS.
 - DOWEL BARS SHALL BE CENTERED ON THE JOINT AND PLACED AT MID-SLAB UNLESS OTHERWISE SHOWN.

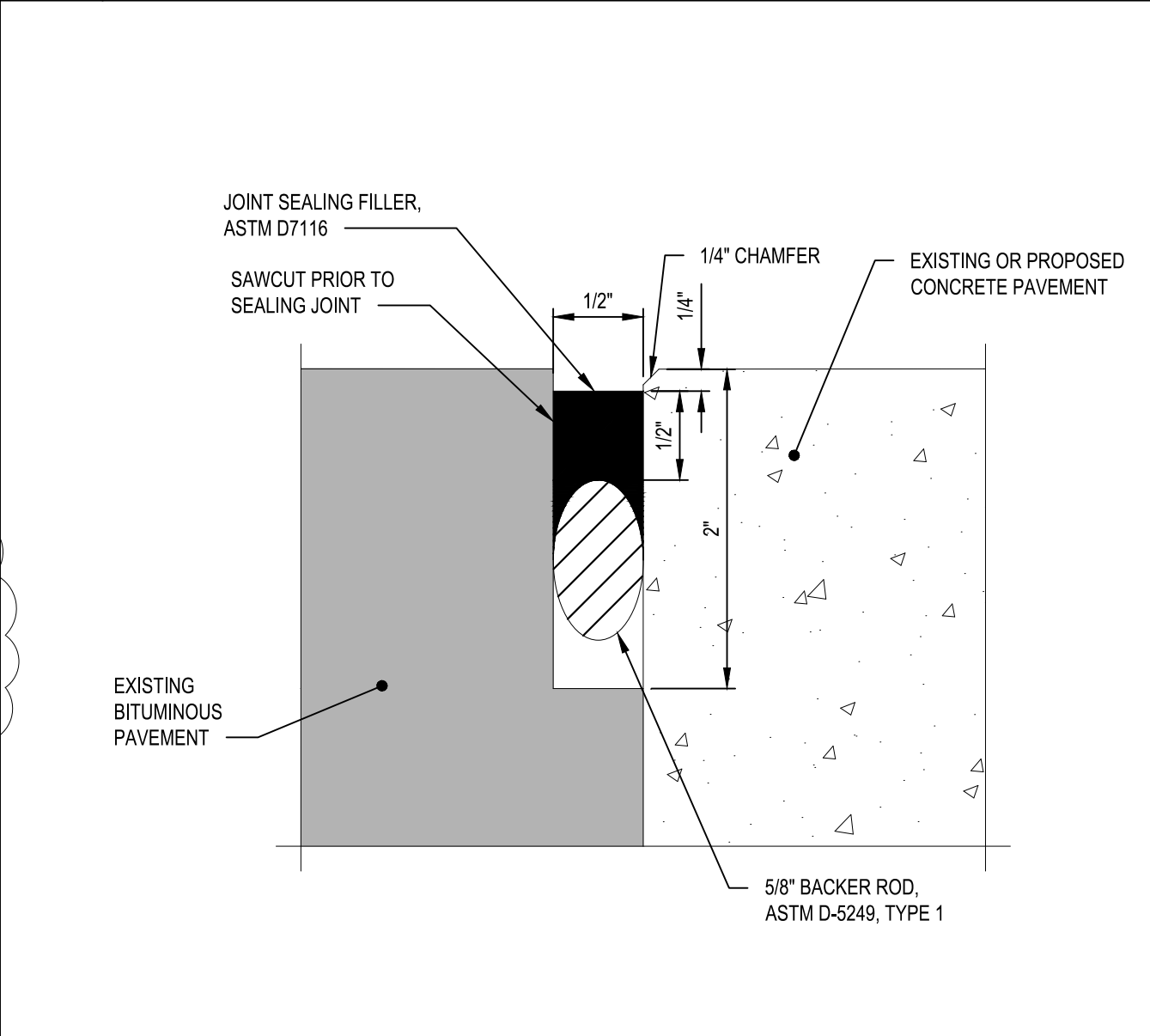
B4 JOINTING NOTES
SCALE: NOT TO SCALE



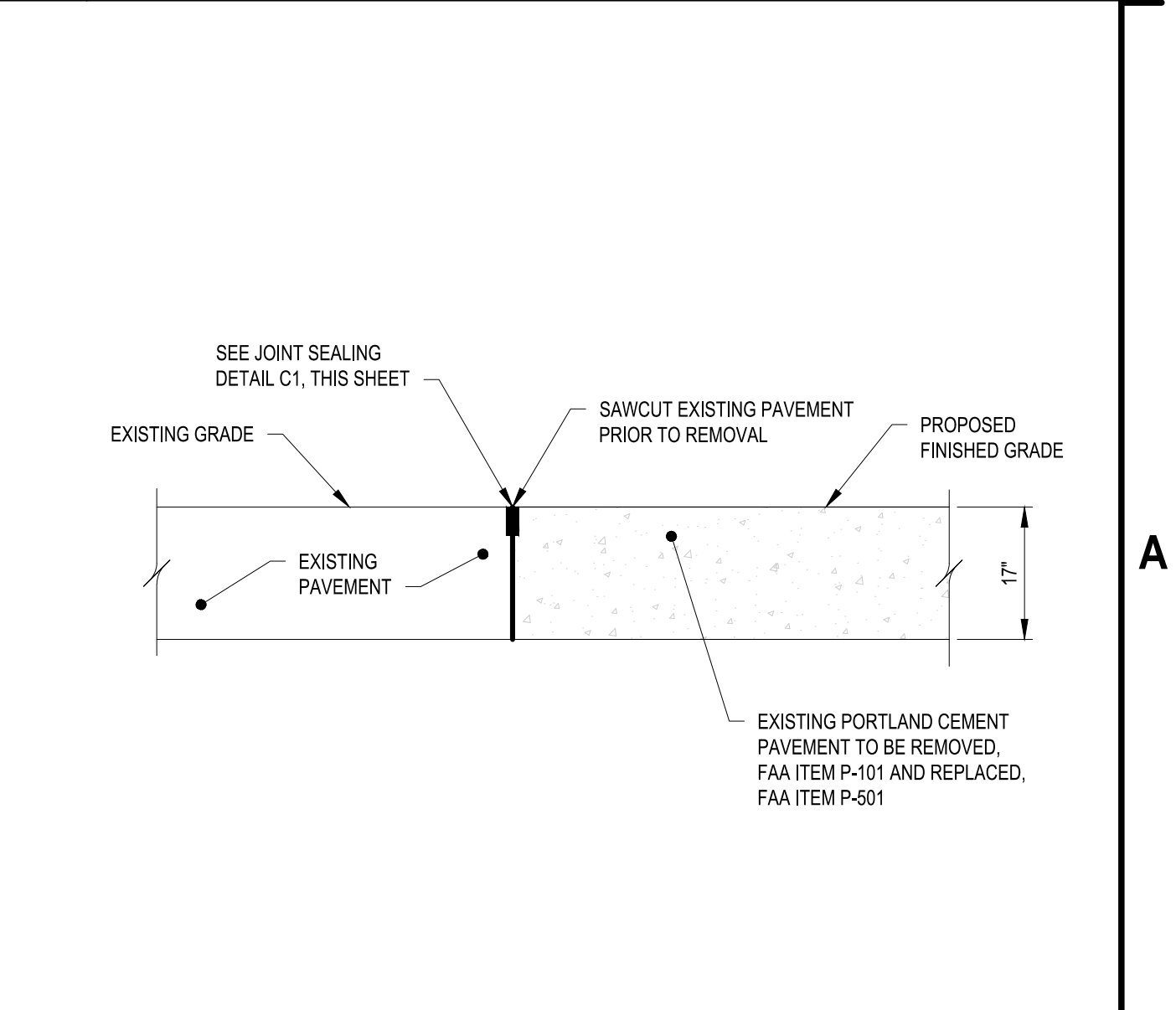
A1 KEYING DETAIL (PROPOSED RECON. TO EXISTING)
SCALE: NOT TO SCALE



A2 APRON PAVEMENT TO CONCRETE TRANSFER PAD KEY
SCALE: NOT TO SCALE



A3 ASPHALT TO CONCRETE JOINT SEALANT DETAIL
SCALE: NOT TO SCALE



A4 KEYING DETAIL
SCALE: NOT TO SCALE

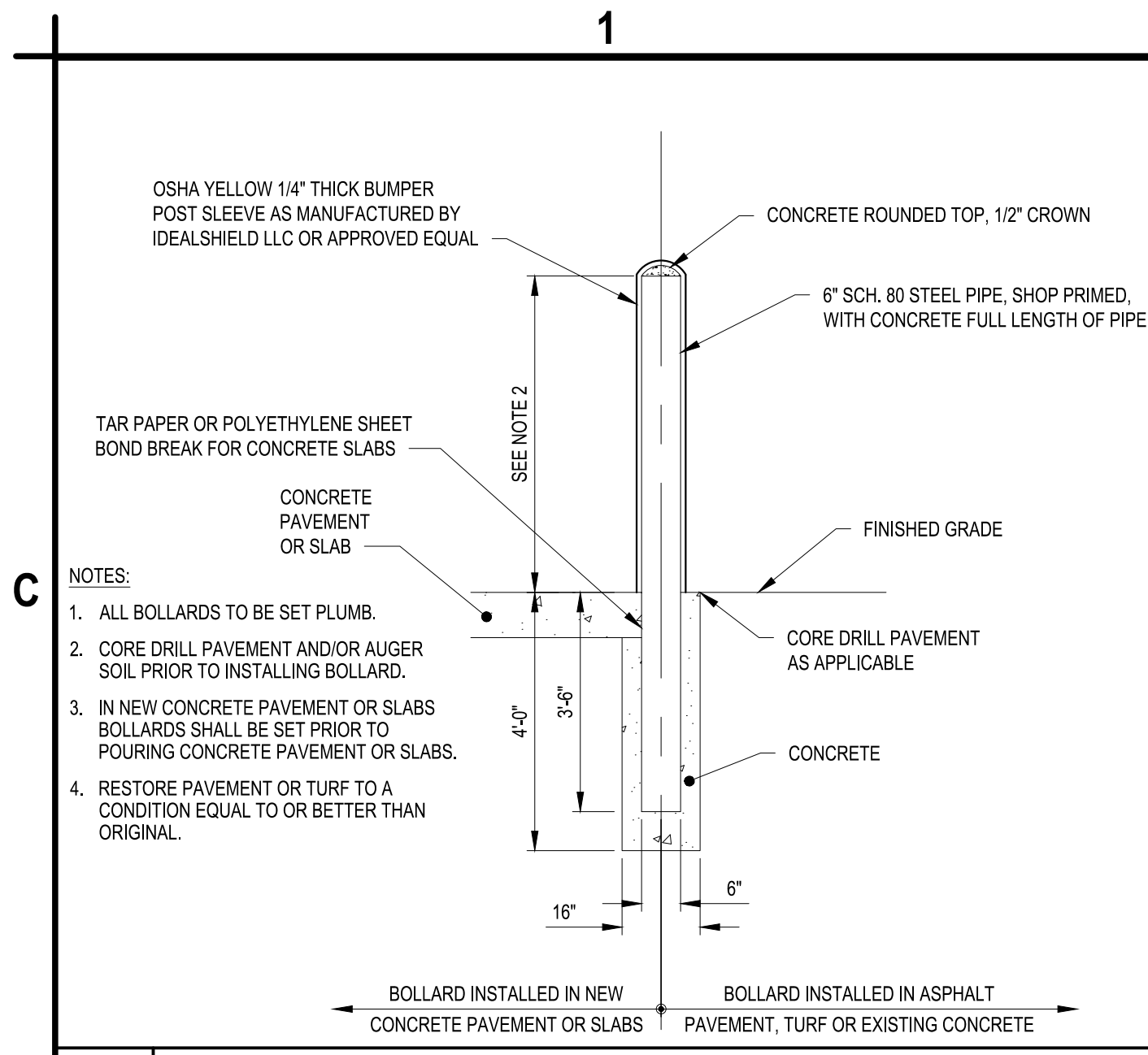
C&S Companies
 C&S Engineers, Inc.
 38777 Six Mile Road, Suite 202
 Livonia, Michigan 48152
 Phone: 734-953-2571
 Fax: 734-206-7973
 www.cscos.com

ERIC JAMES DANIEL
 REGISTERED PROFESSIONAL ENGINEER
 STATE OF INDIANA
 No. PE11900108
 DATE: 4/24/2026

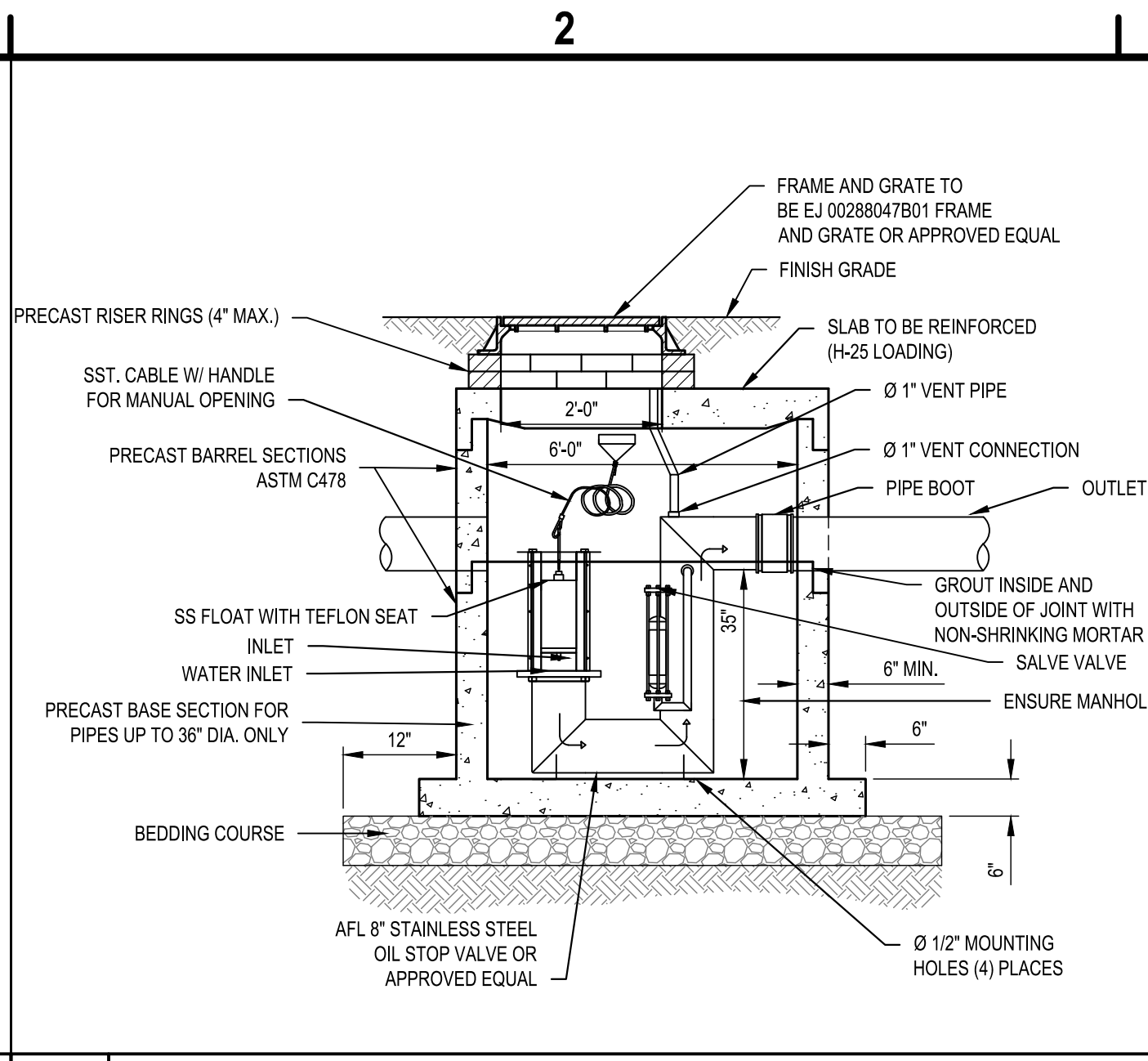
**FWA SELF SERVE FUEL FARM
 FORT WAYNE-ALLEN COUNTY
 AIRPORT AUTHORITY
 ALLEN COUNTY, INDIANA**

MARK	DATE	DESCRIPTION
	04/24/26	ADDENDUM NO. 1
REVISIONS		
PROJECT NO: BL9.001.001		
DATE: APRIL 2026		
DRAWN BY: M. MAHONEY		
DESIGNED BY: C. CHOBERKA		
CHECKED BY: E. DANIEL, P.E.		
CONTRACTOR SHALL VERIFY ALL CONDITIONS ON JOB SITE & NOTIFY THE OWNER OF ANY VARIATIONS FROM DIMENSIONS SHOWN ON THESE DRAWINGS BEFORE PROCEEDING WITH ANY CONSTRUCTION.		
SITE DETAILS		
CS501		
SHEET NO. 12 OF 28		

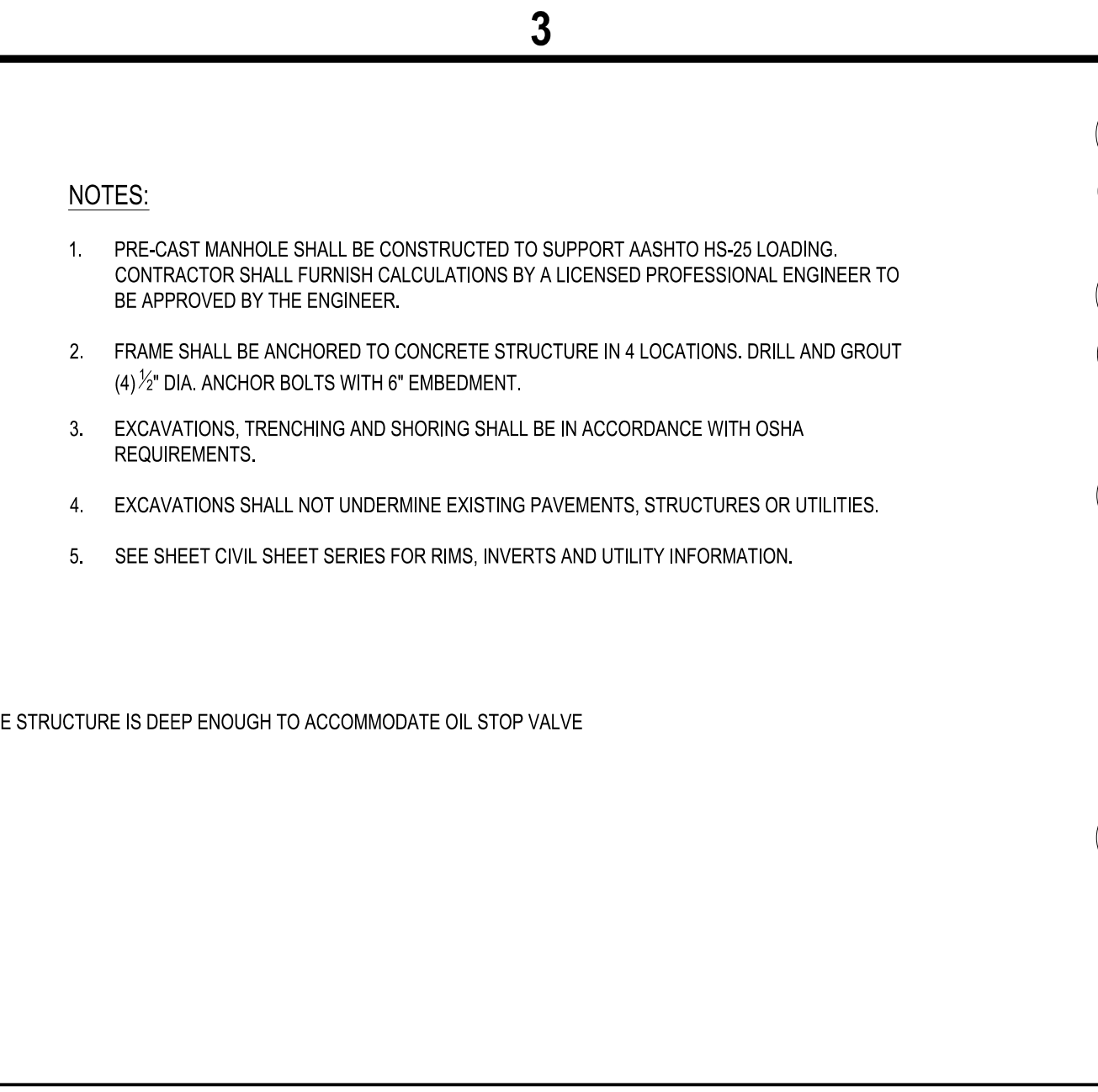
Apr 24, 2026 - 1:28pm
P:\Projects\B15 - Ft Wayne-Allen County Airport Authority\B15\001001 - Self Serve Fuel Facility\Design\CADD\Sheet Files\CS502 SITE DETAILS.dwg



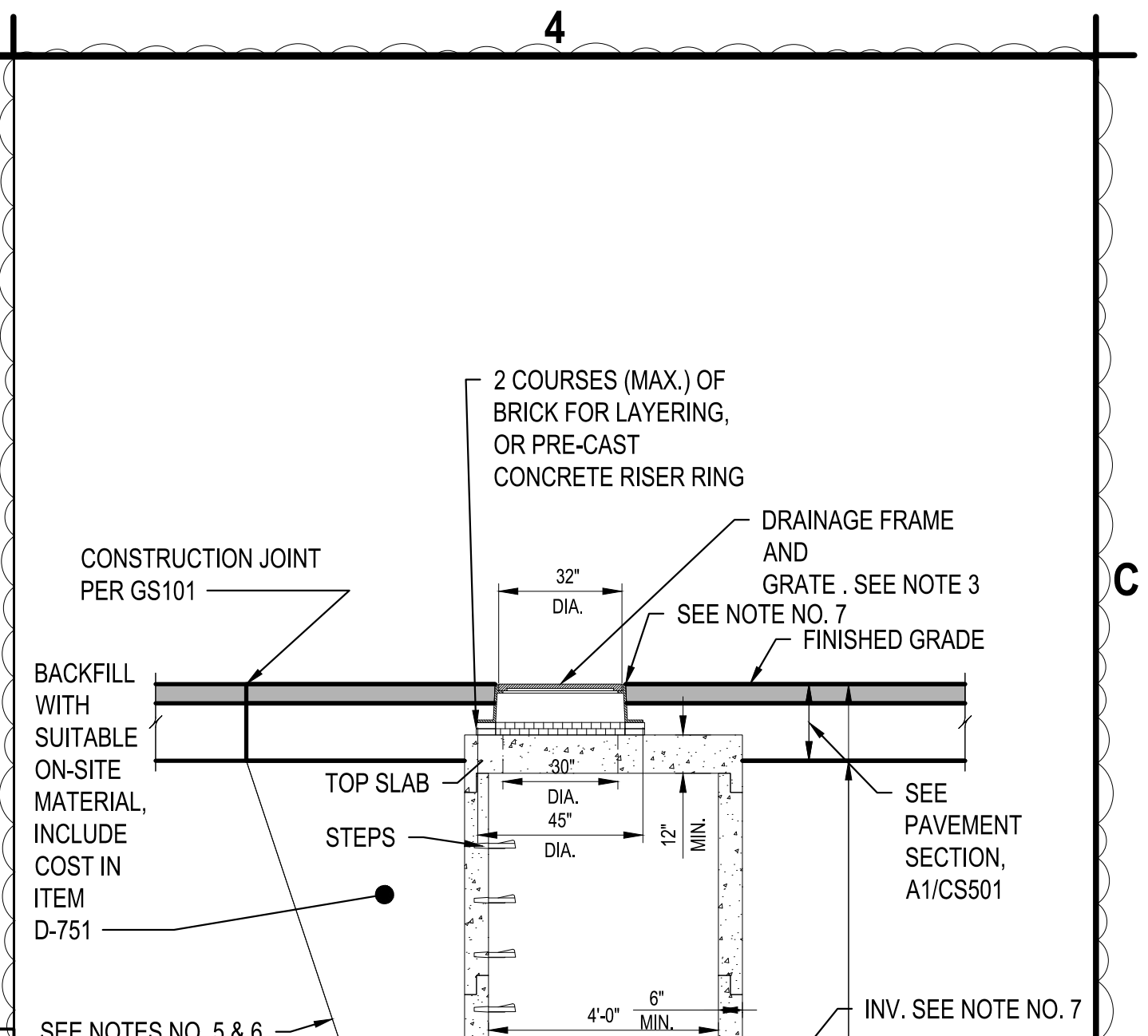
C1 TYPICAL BOLLARD DETAIL
SCALE: NOT TO SCALE



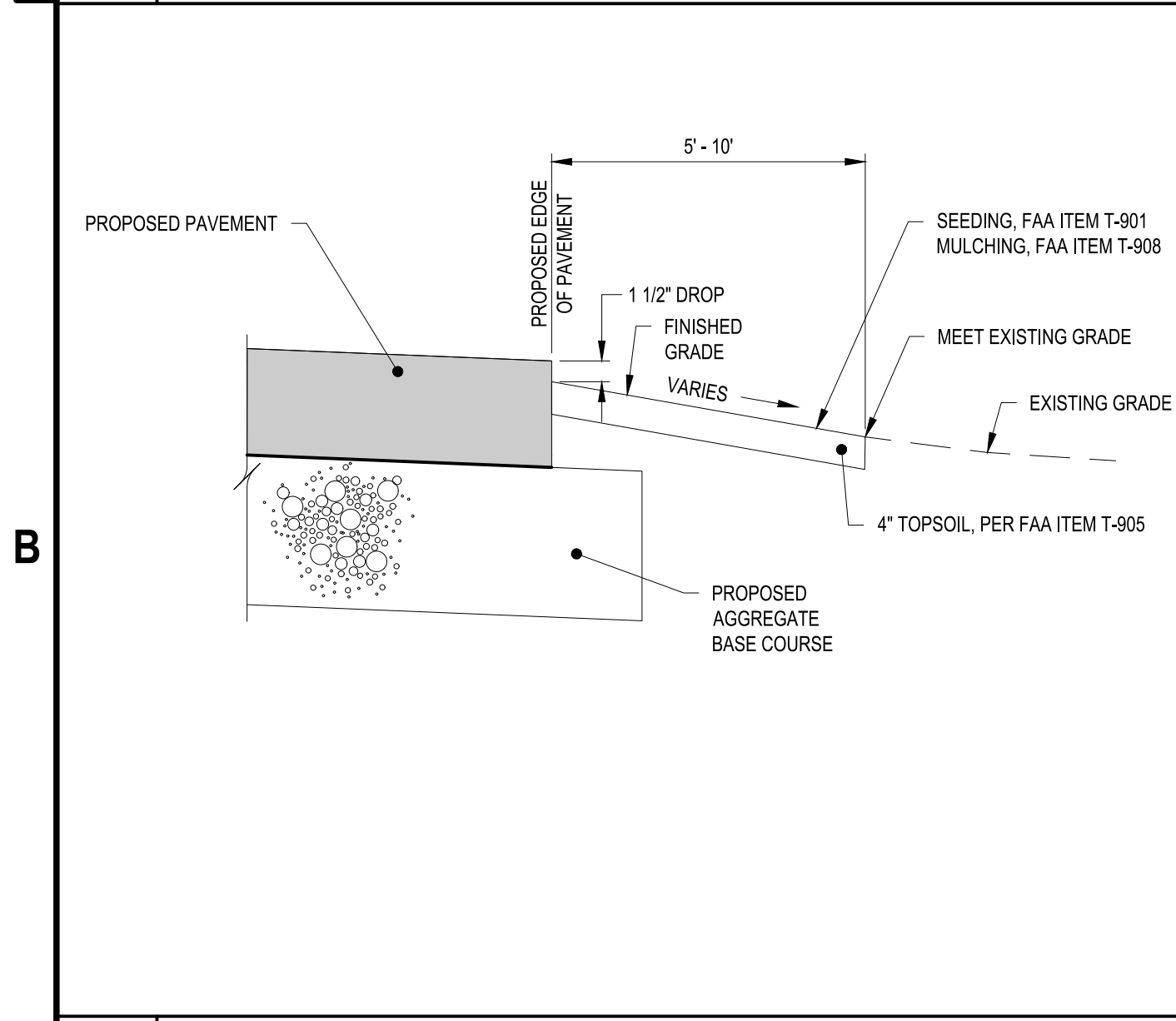
C2 MANHOLE AND OIL STOP VALVE DETAIL
SCALE: NOT TO SCALE



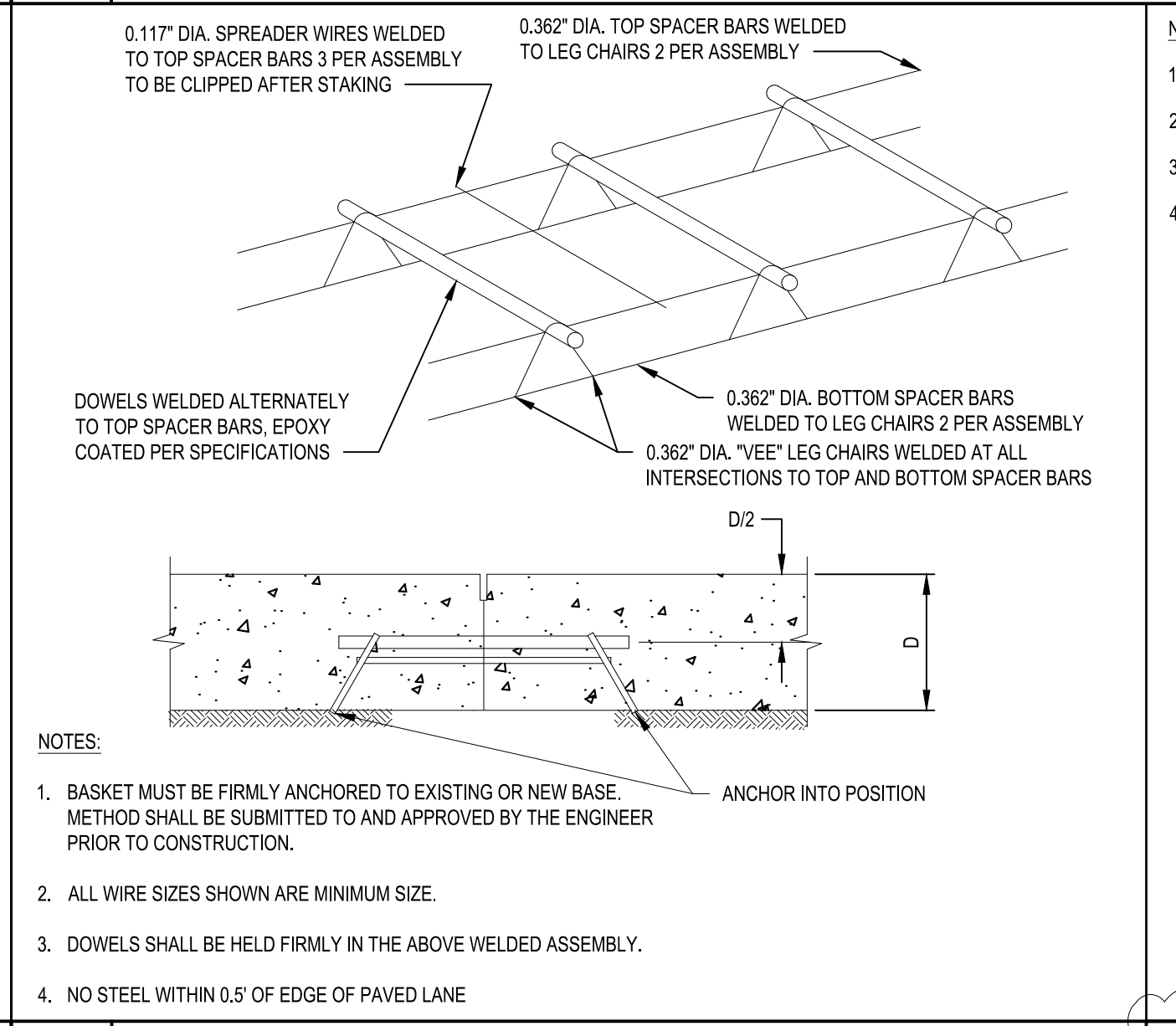
B3 PIPE TRENCHING DETAIL
SCALE: NOT TO SCALE



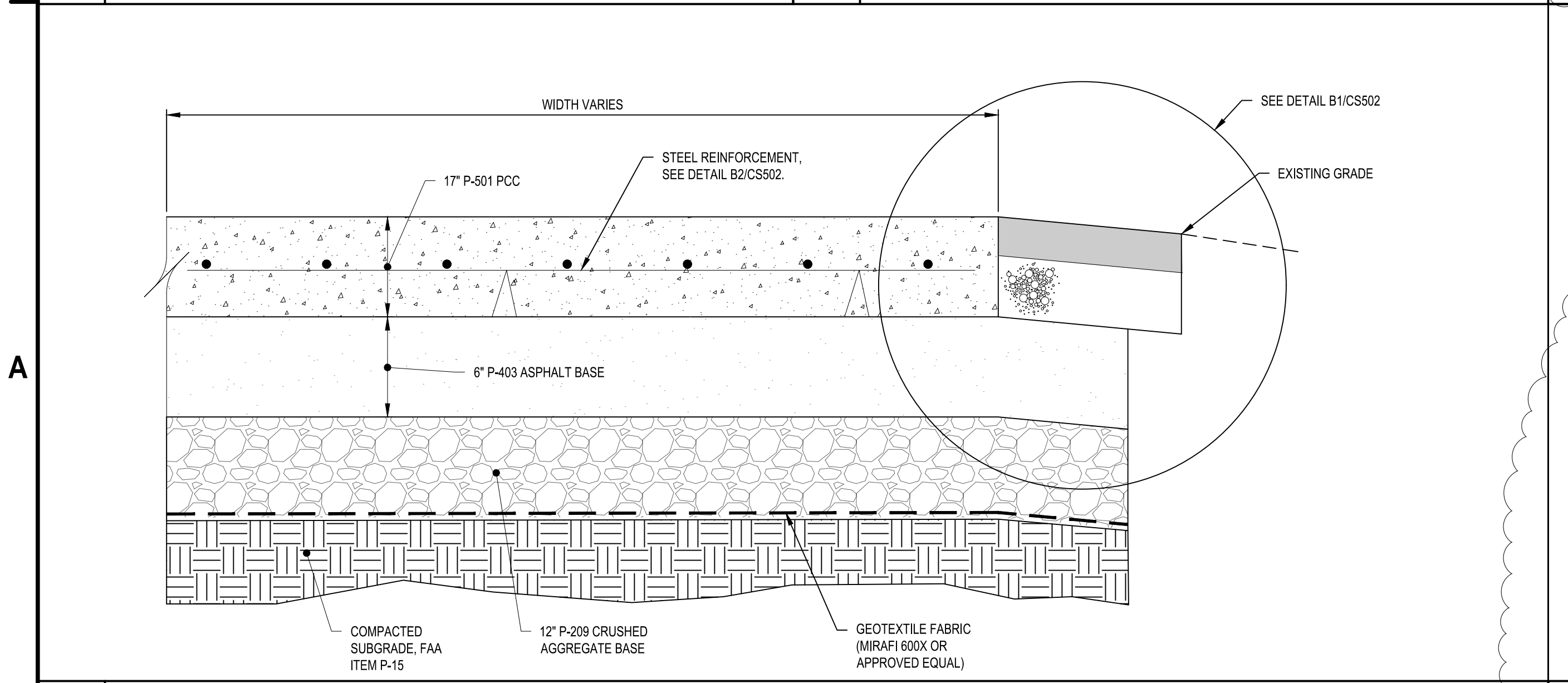
B4 4' DIA PRECAST CONCRETE CATCH BASIN DETAIL
SCALE: NOT TO SCALE



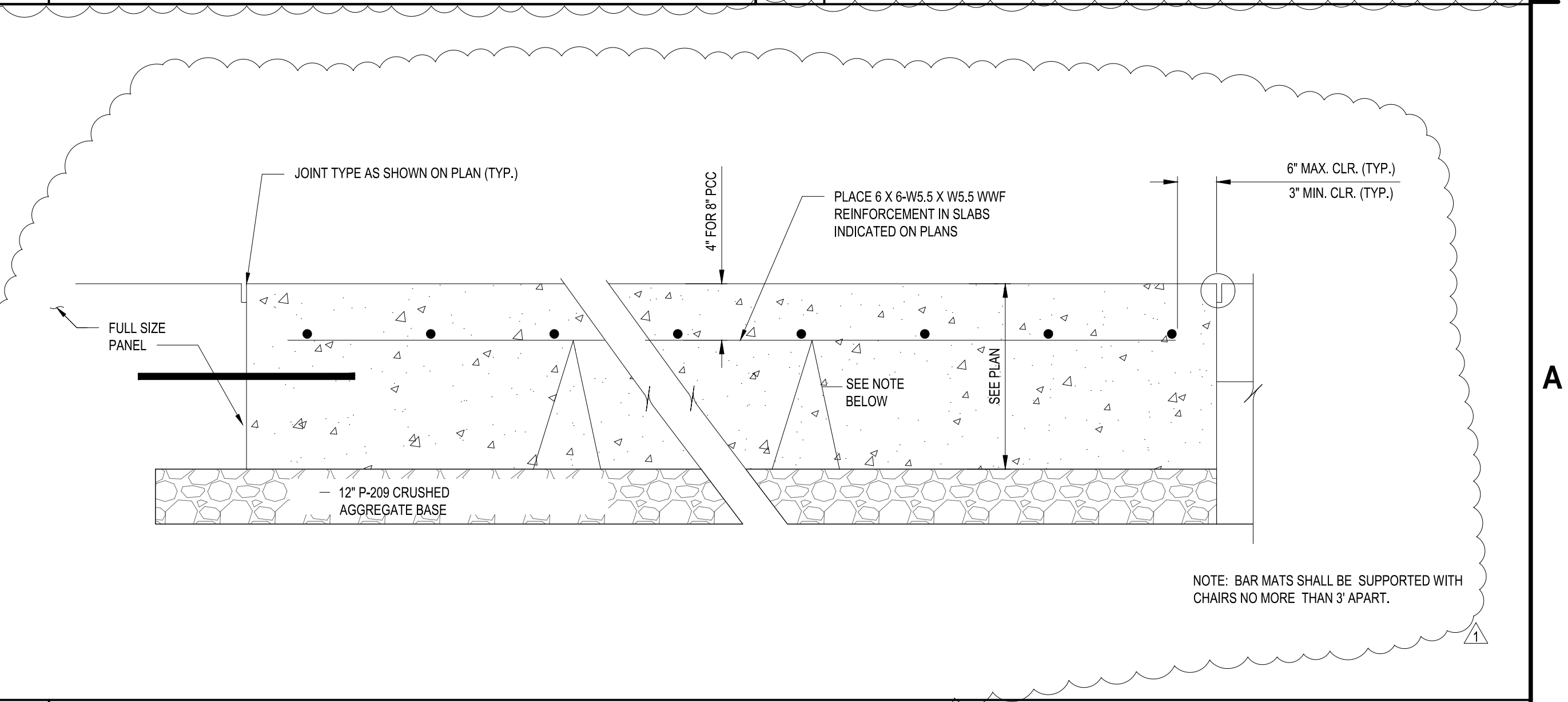
B1 EDGE OF PAVEMENT DETAIL
SCALE: NOT TO SCALE



B2 TYPICAL DOWEL AND TIE BAR BASKET DETAIL
SCALE: NOT TO SCALE



A1 CONCRETE PAVEMENT SECTION
SCALE: NOT TO SCALE



A3 IRREGULAR CONCRETE SLABS REINFORCING
SCALE: NOT TO SCALE

- NOTES:**
- PRE-CAST MANHOLE SHALL BE CONSTRUCTED TO SUPPORT AASHTO HS-25 LOADING. CONTRACTOR SHALL FURNISH CALCULATIONS BY A LICENSED PROFESSIONAL ENGINEER TO BE APPROVED BY THE ENGINEER.
 - FRAME SHALL BE ANCHORED TO CONCRETE STRUCTURE IN 4 LOCATIONS. DRILL AND GROUT (4) 1/2" DIA. ANCHOR BOLTS WITH 6" EMBEDMENT.
 - EXCAVATIONS, TRENCHING AND SHORING SHALL BE IN ACCORDANCE WITH OSHA REQUIREMENTS.
 - EXCAVATIONS SHALL NOT UNDERMINE EXISTING PAVEMENTS, STRUCTURES OR UTILITIES.
 - SEE SHEET CIVIL SHEET SERIES FOR RIMS, INVERTS AND UTILITY INFORMATION.

- NOTES:**
- PRE-CAST MANHOLE/CATCH BASIN SHALL BE CONSTRUCTED TO SUPPORT AASHTO HS-25 LOADING ITEM D-751. ALL PRECAST STRUCTURES SUBMITTED SHALL BE ACCOMPANIED WITH THE DESIGN CALCULATIONS SHOWING THAT THE STRUCTURE MEETS THE INTENDED LOADING. THE DRAWINGS AND CALCULATIONS SHALL BE STAMPED BY A LICENSED PROFESSIONAL ENGINEER IN THE STATE THE PROJECT IS LOCATED.
 - REINFORCING STEEL NOT SHOWN. ALL PRECAST STRUCTURES SHALL INCLUDE STEEL REINFORCEMENT BASED ON THE DESIGN CALCULATIONS.
 - USE 6" HIGH EJ 1207 FRAME AND GRATE, NEENAH R-2556 FRAME WITH TYPE "G" GRATE, OR EQUAL.
 - FRAME SHALL BE ANCHORED TO CONCRETE STRUCTURE IN 4 LOCATIONS. DRILL AND GROUT (4) 1/2" DIA. ANCHOR BOLTS WITH 6" EMBEDMENT.
 - EXCAVATIONS, TRENCHING AND SHORING SHALL BE IN ACCORDANCE WITH OSHA REQUIREMENTS.
 - EXCAVATIONS SHALL NOT UNDERMINE EXISTING PAVEMENTS, STRUCTURES OR UTILITIES.
 - SEE GRADING PLANS FOR NUMBER OF PIPES, SIZES AND ORIENTATION.
 - FOR RIMS AND INVERTS SEE PROFILE ON CG101.
 - PLAIN AND REINFORCED CONCRETE USED IN STRUCTURES SHALL CONFORM TO THE REQUIREMENTS OF ITEM P-610.
 - PRECAST CONCRETE STRUCTURES SHALL CONFORM TO ASTM C478.

C&S COMPANIES
C&S Engineers, Inc.
38777 Six Mile Road, Suite 202
Livonia, Michigan 48152
Phone: 734-953-2571
Fax: 734-206-7973
www.cscos.com

ERIC JAMES DANIEL
REGISTERED PROFESSIONAL ENGINEER
STATE OF INDIANA
No. PE11900108
Eric James Daniel
DATE: 4/24/2026

FORT WAYNE-ALLEN COUNTY
AIRPORT AUTHORITY

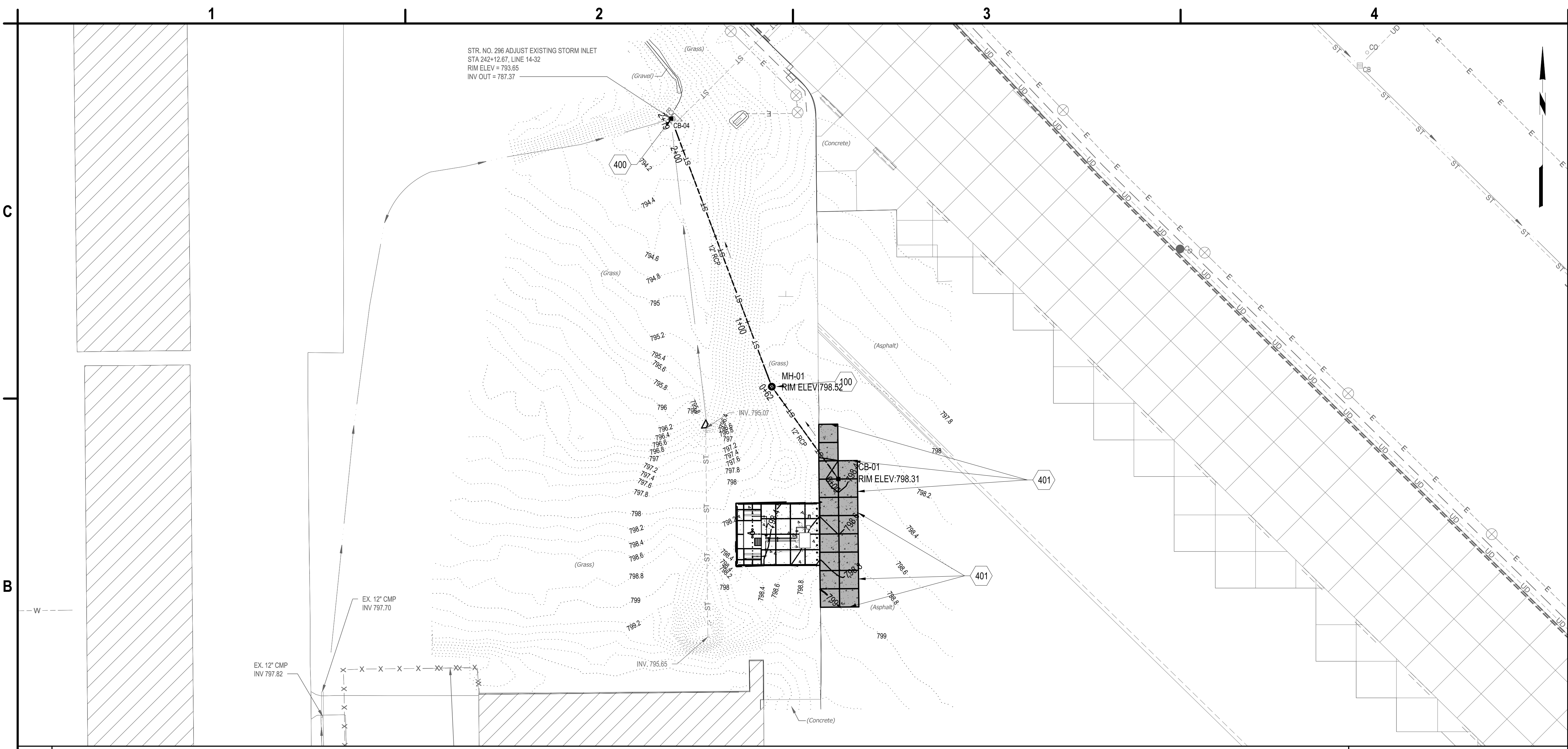
**FWA SELF SERVE FUEL FARM
FORT WAYNE-ALLEN COUNTY
AIRPORT AUTHORITY
ALLEN COUNTY, INDIANA**

MARK	DATE	ADDENDUM NO. 1	DESCRIPTION
	04/24/26		

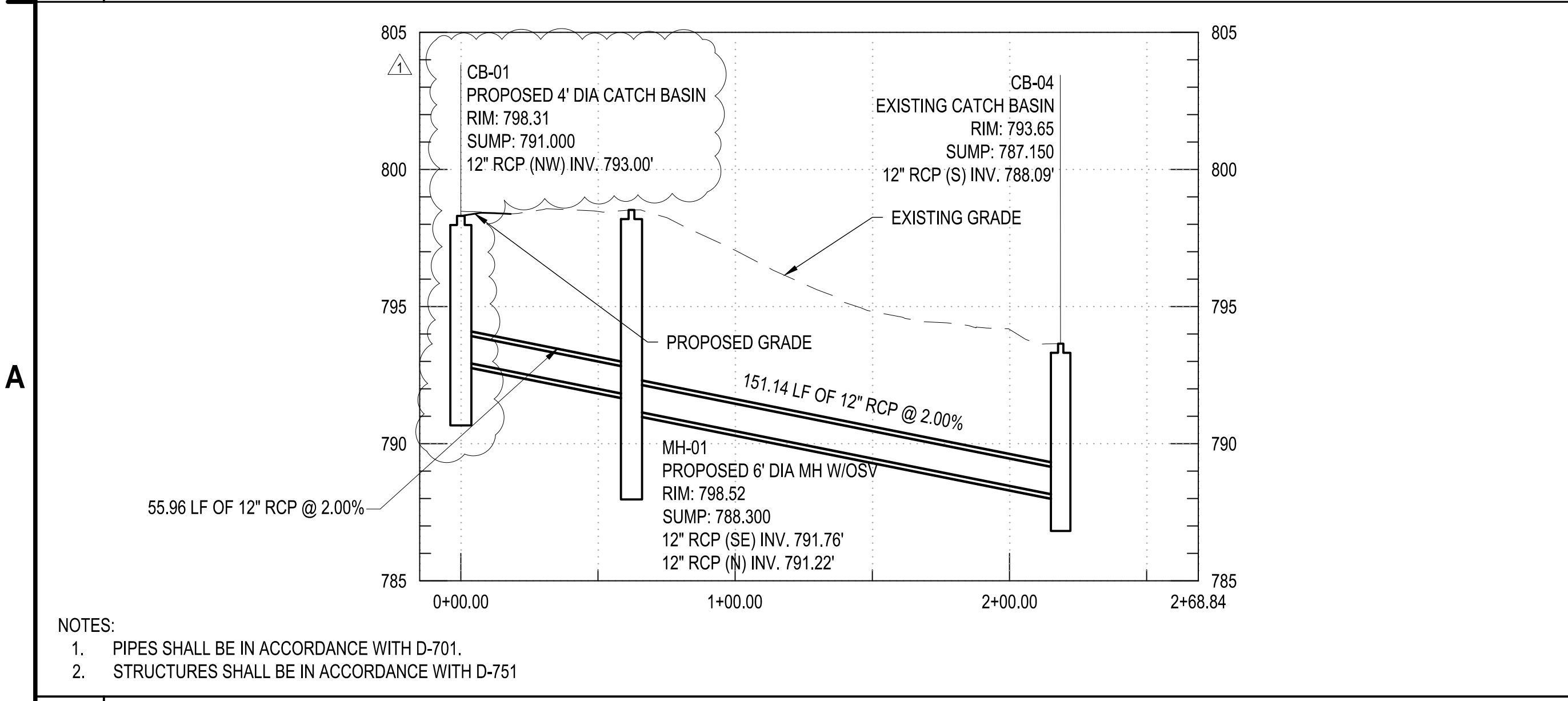
REVISIONS	
PROJECT NO:	BL9.001.001
DATE:	APRIL 2026
DRAWN BY:	M. MAHONEY
DESIGNED BY:	C. CHOBERKA
CHECKED BY:	E. DANIEL, P.E.

CONTRACTOR SHALL VERIFY ALL CONDITIONS ON JOB SITE & NOTIFY THE OWNER OF ANY VARIATIONS FROM DIMENSIONS SHOWN ON THESE DRAWINGS BEFORE PROCEEDING WITH ANY CONSTRUCTION.

SITE DETAILS



B1 DRAINAGE PLAN
 SCALE: 1" = 30'



A1 PROPOSED STORM PROFILE
 SCALE: HORIZ.: 1" = 40', VERT.: 1" = 4'

DRAINAGE NOTES:

- ALL RCP PIPE JOINTS SHALL HAVE TYPE 4G NITRILE GASKETS AND ALL STRUCTURES SHALL HAVE NITRILE PIPE TO STRUCTURE CONNECTIONS.
- CONNECT NEW STORM PIPE TO EXISTING STRUCTURE CB-04.

A3 NOTES
 SCALE: NOT TO SCALE

100. PROPOSED MANHOLE WITH OIL STOP VALVE

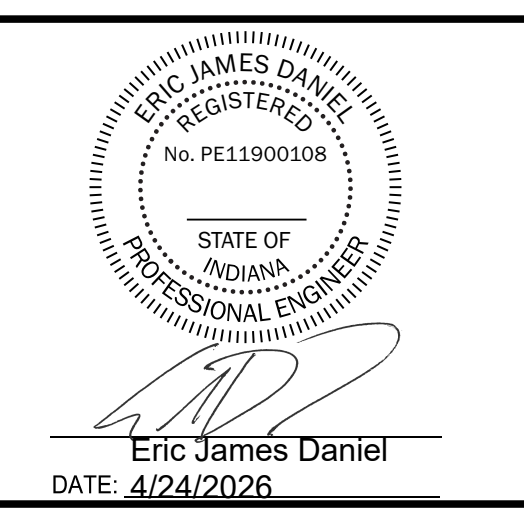
400. CORE DRILL STRUCTURE FOR NEW CONNECTION. PROVIDE WATERTIGHT CONNECTION.

401. MEET EXISTING GRADE

A4 KEYED NOTES
 SCALE: NOT TO SCALE



C&S Engineers, Inc.
 38777 Six Mile Road, Suite 202
 Livonia, Michigan 48152
 Phone: 734-953-2571
 Fax: 734-206-7973
 www.cscos.com

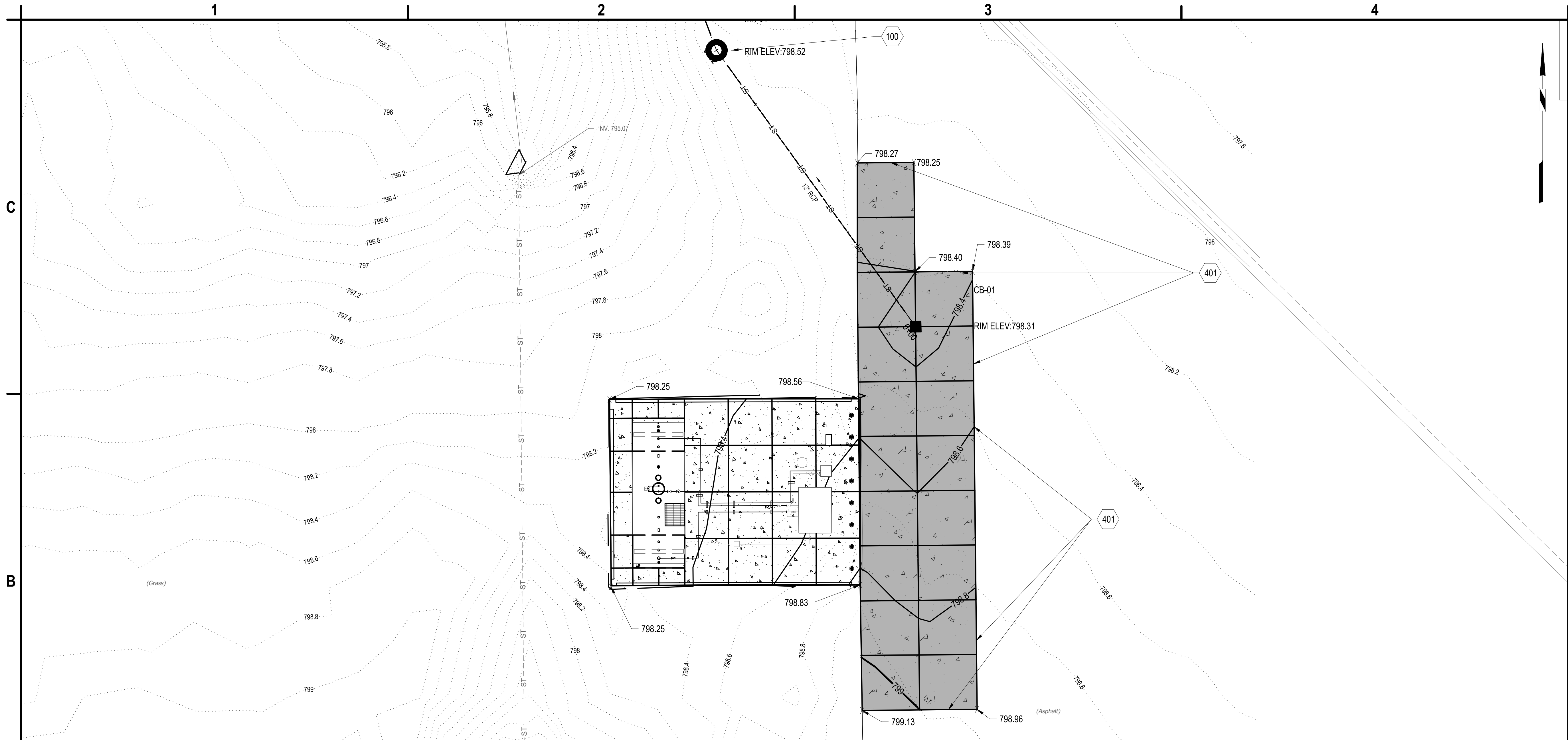


**FWA SELF SERVE FUEL FARM
 FORT WAYNE-ALLEN COUNTY
 AIRPORT AUTHORITY
 ALLEN COUNTY, INDIANA**

MARK	DATE	DESCRIPTION
	04/24/26	ADDENDUM NO.1
REVISIONS		
PROJECT NO: BL9.001.001		
DATE: APRIL 2026		
DRAWN BY: M. MAHONEY		
DESIGNED BY: C. CHOBERKA		
CHECKED BY: E. DANIEL, P.E.		
CONTRACTOR SHALL VERIFY ALL CONDITIONS ON JOB SITE & NOTIFY THE OWNER OF ANY VARIATIONS FROM DIMENSIONS SHOWN ON THESE DRAWINGS BEFORE PROCEEDING WITH ANY CONSTRUCTION.		

DRAINAGE PLAN

Apr 24, 2026 - 1:28pm
 P:\Projects\CG101 - Ft Wayne-Allen County Airport Authority\BL9.001.001 - Self Serve Fuel Facility\Design\CG101\Sheet Files\BL9.001.001_CG101.dwg



B1 GRADING PLAN

SCALE: 1" = 10'



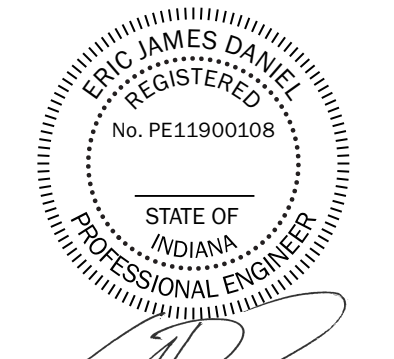
- 100. PROPOSED MANHOLE WITH OIL STOP VALVE
- 401. MEET EXISTING GRADE

A4 KEYED NOTES

SCALE: NOT TO SCALE



C&S Engineers, Inc.
 38777 Six Mile Road, Suite 202
 Livonia, Michigan 48152
 Phone: 734-953-2571
 Fax: 734-206-7973
 www.cscos.com



Eric James Daniel
 DATE: 4/24/2026



**FWA SELF SERVE FUEL FARM
 FORT WAYNE-ALLEN COUNTY
 AIRPORT AUTHORITY
 ALLEN COUNTY, INDIANA**

MARK	DATE	DESCRIPTION
△	04/24/26	ADDENDUM NO.1
REVISIONS		
PROJECT NO: BL9.001.001		
DATE: APRIL 2026		
DRAWN BY: M. MAHONEY		
DESIGNED BY: C. CHOBERKA		
CHECKED BY: E. DANIEL, P.E.		
CONTRACTOR SHALL VERIFY ALL CONDITIONS ON JOB SITE & NOTIFY THE OWNER OF ANY VARIATIONS FROM DIMENSIONS SHOWN ON THESE DRAWINGS BEFORE PROCEEDING WITH ANY CONSTRUCTION.		

GRADING PLAN

CG102

SHEET NO. 15 OF 28

Copyright ©

Apr 24, 2026 - 1:29pm
 P:\Project\CG102 - Fort Wayne-Allen County Airport Authority\BL9.001.001 - Self Serve Fuel Facility\Design\CG102\Sheet Files\BL9.001.001_CG102.dwg

