



**Addendum #5  
Lakeland School Corporation  
Maintenance Building**

**Date:** May 05, 2026  
**Project:** Maintenance Building  
**Project #:** 25082  
**Pages:** 1 of 2  
**Bid Dates:** **THURSDAY, May 14th, 2026 at 11:30 am (prevailing local time)**

**General Note:**

The original Specifications and Drawings dated April 10, 2026 for the project referenced above are amended as noted in this Addendum No. 5. Receipt of this Addendum and any subsequent Addenda must be acknowledged on the Bid Form. Items changed or added by this addendum are to take precedence over the items or descriptions of the work in the project manual and the drawings. Items not mentioned in this addendum are to remain as described in the original plans and specifications.

**Specifications :**

**26 16 00 Panelboards**

Square D / Cutler Hammer (Eaton) are acceptable.

---

**Drawing Set Items:**

**Sheet E1-1 Electrical Plan**

1. See revised electrical plan and electrical riser diagram.
2. Changed Panel P1-1 to 100 amp.
3. Moved some circuits from Panel P0 to P1.
4. Transfer switch will now feed 100 amp panel P1.
5. Generator to be 20 kw, 3 phase 208 volt.

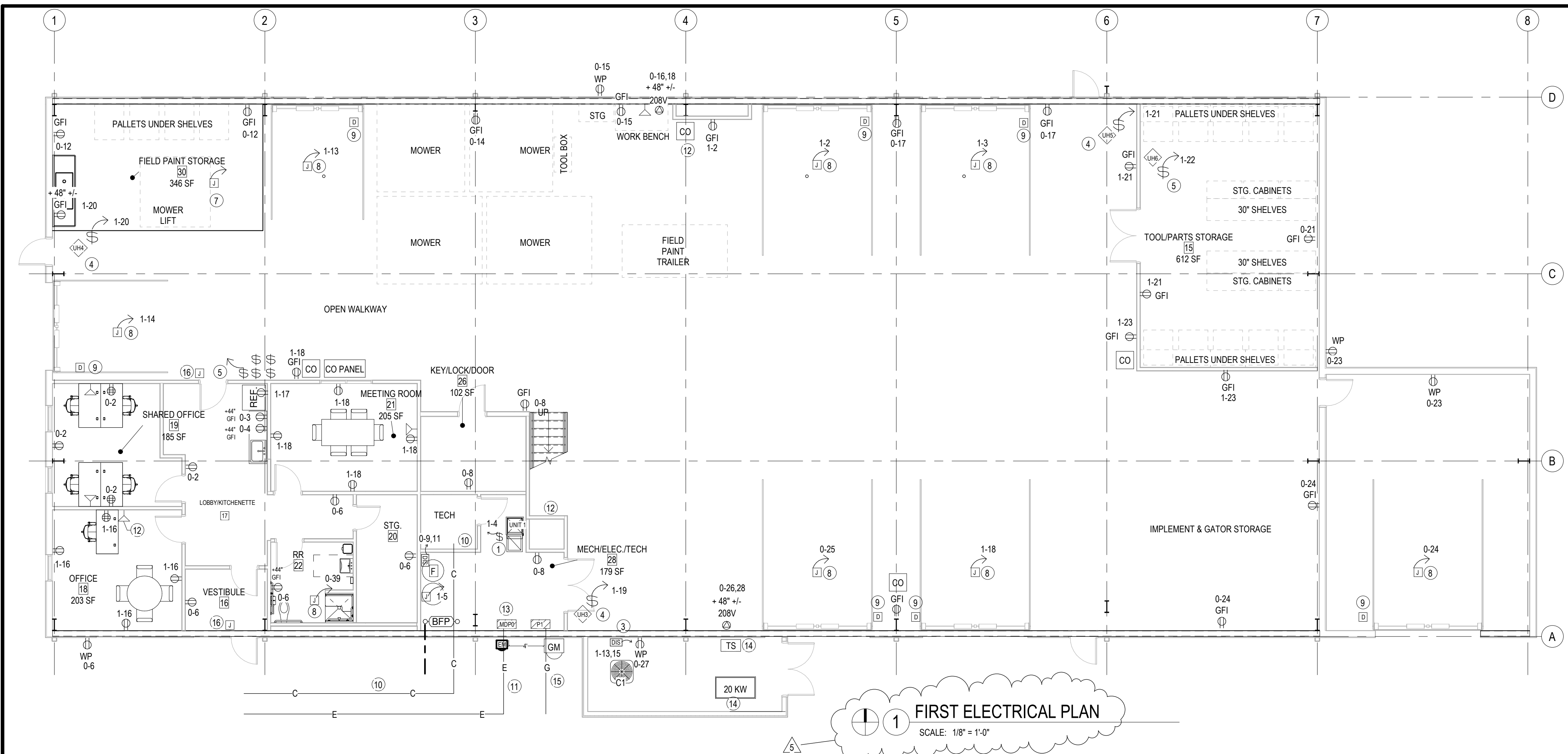
---

**Sheet M1-1 HVAC Plan**

1. All thermostats to be PRO1 IAQ T855iSH Universal WiFi Smart Thermostat.

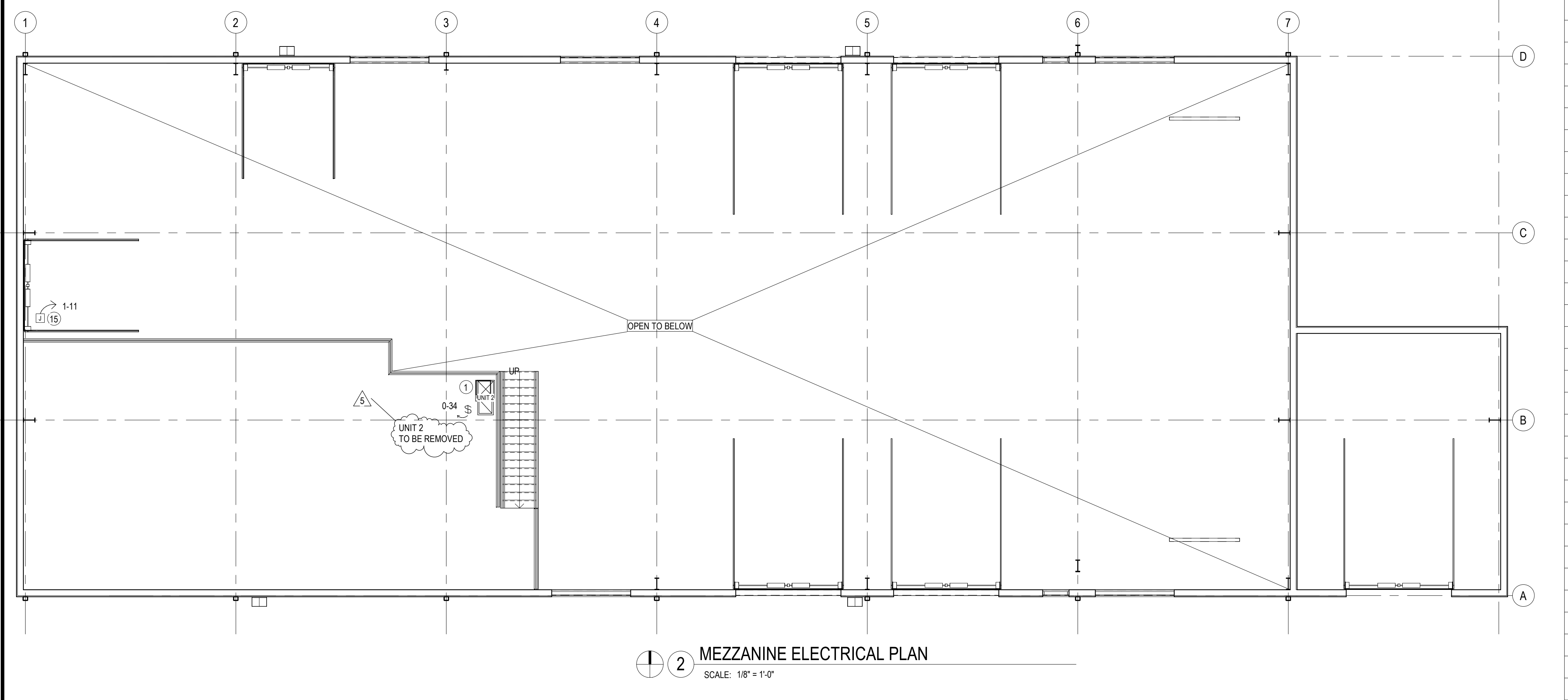
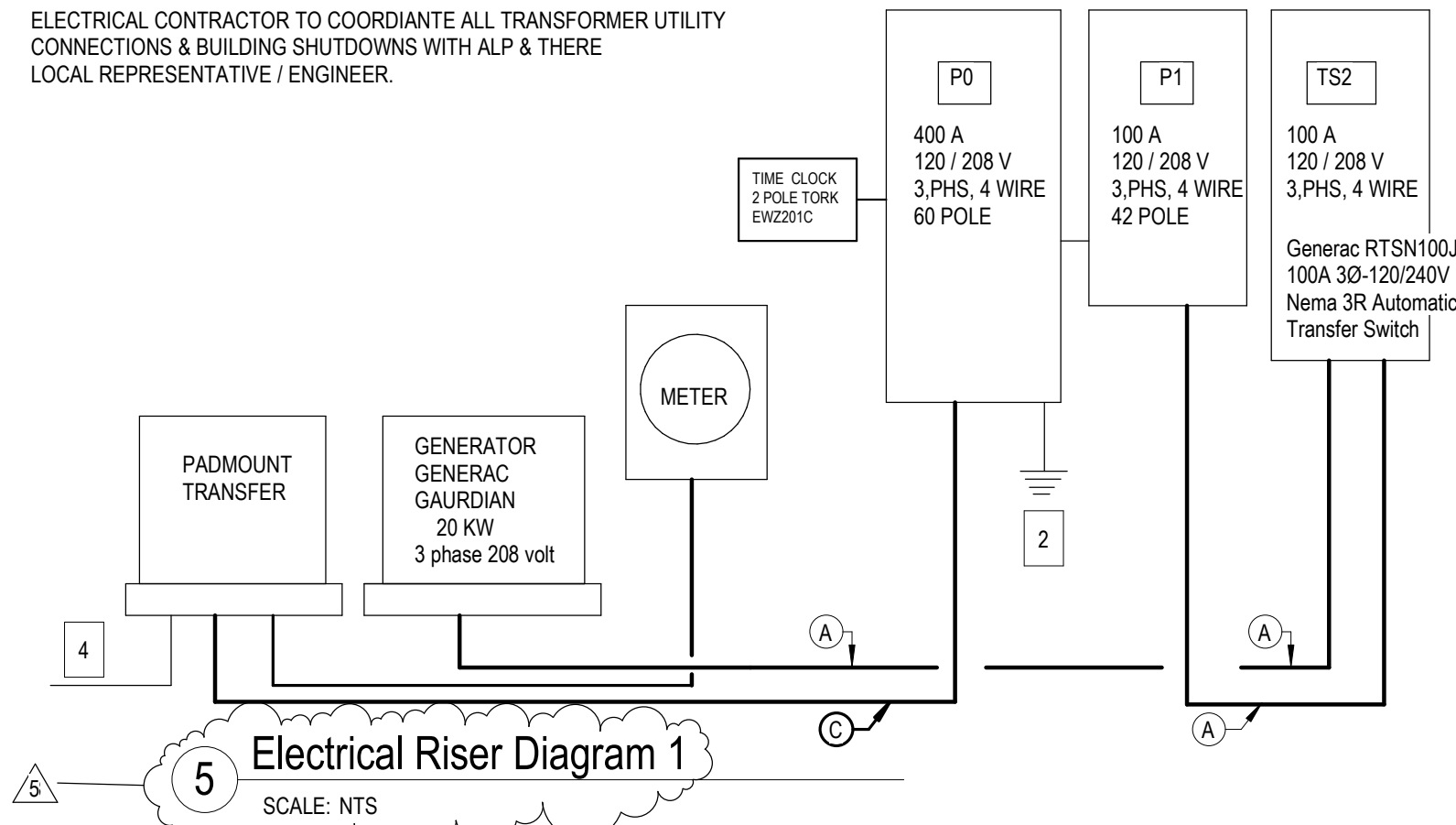
**Attachments:**

1. Sheet E1-1 Electrical Plan



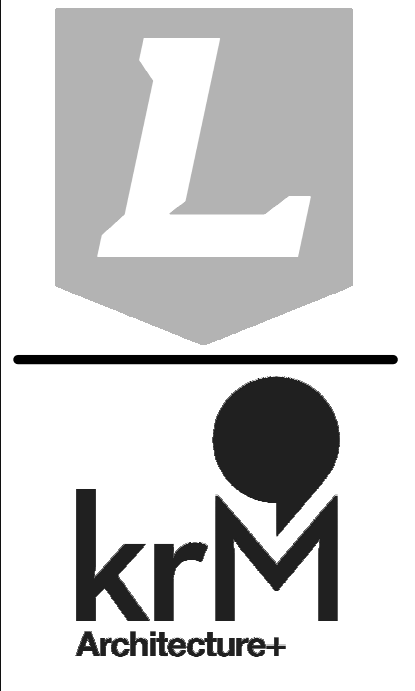
- ### ELECTRICAL NOTES
- ELECTRICAL SWITCH DISCONNECT FOR FURNACE BLOWER MOTOR.
  - ELECTRICAL CONTRACTOR TO INCLUDE IN THE BID PRICE 6, 20 AMP DUPLEX RECEPTACLES. 2 DATA JACK WITH CABLEING AND JACKS. TO BE ADDED DURING ROUGH IN WALK THROUGH. LOCATION DETERMINED BY OWNER.
  - 4 TON HEAT PUMP/CONDENSER DISCONNECT.
  - GAS HEATER DISCONNECT. TOGGLE ON OFF SWITCH.
  - ON/OFF SWITCH FOR EXHAUST FANS EF1. IS ON THE CO PANEL CONTROL BOX.
  - ELECTRIC WATER HEATER DISCONNECT. 6KW.
  - MOWER LIFT ELECTRICAL CONNECTION.
  - MOTORIZED OVER HEAD DOOR ELECTRIC CONNECTION.
  - OVERHEAD DOOR OPEN, CLOSE, STOP BOTTOM.
  - 4" Ø PVC CONDUIT IN FROM SITE FOR COMMUNICATIONS.
  - ELECTRICAL INTO BUILDING. COORDINATE WITH CIVIL ON EXACT LOCATION.
  - LOCATION OF SERVER. DATA CABLING FROM JACKS TO BE RUN INTO THIS ROOM.
  - MAIN DISTRIBUTION PANEL.
  - THE GENERATOR REQUIRES A MINIMUM OF 18" OF CLEARANCE FROM THE BACK TO A STATIONARY WALL. ALSO INCLUDE 3" OF CLEARANCE AT THE FRONT & BOTH ENDS & 60" ABOVE. GENERAC GAURDIAN SERIS 20 KW GENERATOR & 200 AMP TRANSFER SWITCH.
  - 120 VOLT ELECTRICAL CONNECTION FOR SIDEWALL EXHAUST FAN.
  - KEY FAUB LOW VOLTAGE CONNECTION. EACH DEVICE TO HAVE OWN BOX & 3/4" CONDUIT FROM ABOVE CEILING TO THE DEVICE.
  - ELEC. CONTRACTOR TO INSTALL DATA DEVICE BOXES AND CONDUIT TO ABOVE CEILING. ELEC. CONTRACTOR TO PROVIDE ALL PHONE & DATA CAT 5 CABLEING. JACKS AND COVER PLATES. DATA JACK ON EACH END OF THE CABLE. PULL BACK TO THE TECH. RM. PATCH PANELS AND RACKS. ARE BY THE OWNER. TEST ALL CABLES. FINAL CONNECTION TO SERVER RACK PATCH PANEL LOCATION ROOM BY OWNER.

- ### ELECTRICAL RISER NOTES
- SURGE PROTECTION DEVICE
  - GROUND
  - 36" COVER OVER ELECTRICAL LINES.
  - SEE SITE ELECTRICAL PLAN FOR ELECTRICAL SERVICE
  - 4" PVC SPARE CONDUIT
- ### FEEDER SIZES
- (A) (1) SETS, 4 #3 MCM THWN CU. W/ GRD #8 CU. 1 1/2" C 100A  
 (B) (1) SETS, 4 #4/0 MCM THWN CU. W/ GRD #4 CU. 2 1/2" C 225A  
 (C) (1) SETS, 4 #600 MCM THWN CU. W/ GRD #3 CU. 3.5" C 400A  
 (D) (1) SETS, 4 #3/0 MCM THWN CU. W/ GRD #4 CU. 2 1/2" C 200A  
 (E) (2) SETS, 4 #350 MCM THWN CU EACH. W/ GRD #1 CU. 4" C 600A  
 (F) (1) SETS, 4 #8 MCM THWN CU. W/ GRD #10 CU. 1.5" C 40A



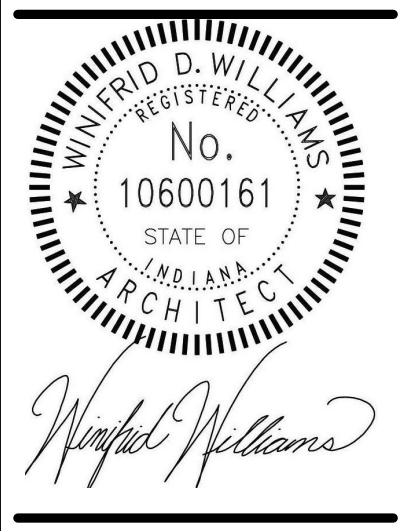
| PANEL # P0  |              |      |      |   |      |      |             |              |                | PANEL # P1  |              |             |      |      |      |      |             |                  |        |    |
|---|--------------|------|------|---|------|------|-------------|--------------|----------------|---|--------------|-------------|------|------|------|------|-------------|------------------|--------|----|
| TOTAL VOLT AMPS 120/208 VOLT 3 PHASE 4 WIRE 400 AMP SURFACE MOUNT 60 POLE MAIN DISCONNECT |              |      |      |   |      |      |             |              |                | TOTAL VOLT AMPS 120/208 VOLT 3 PHASE 4 WIRE 100 AMP SURFACE MOUNT 25.4 KW 42 POLE MAIN DISCONNECT |              |             |      |      |      |      |             |                  |        |    |
| CRCT #  | DESCRIPTION  | CRKT | A    | B | C    | CRKT | DESCRIPTION | CRCT #       |                | CRCT #  | DESCRIPTION  | CRKT        | A    | B    | C    | CRKT | DESCRIPTION | CRCT #           |        |    |
| 1   | SPARE        | 20   |      |   | 1000 | 20   | 1           | RECP.        | 2              | 1   | OHD          | 20          | 1100 |      | 1100 | 20   | 1           | OHD & RECP.      | 2      |    |
| 3   | RECP.        | 20   |      |   | 2000 | 20   | 1           | RECP.        | 4              | 3   | OHD          | 20          | 1100 | 600  |      | 20   | 1           | UNIT 1           | 4      |    |
| 5   | SPARE        | 20   | 1000 |   | 1000 | 20   | 1           | RECP.        | 6              | 5   | BOOSTER TANK | 20          | 1    | 600  | 1000 | 20   | 1           | LIGHTS & EXHAUST | 6      |    |
| 7   | SPARE        | 20   |      |   | 1000 | 20   | 1           | RECP.        | 8              | 7   | NIGHT LIGHTS | 20          | 1100 |      | 1100 | 20   | 1           | LIGHTS           | 8      |    |
| 9   | WATER HEATER | 40   | 3000 |   |      | 20   | 1           | SPARE        | 10             | 9   | LIGHTS       | 20          | 500  | 700  |      | 20   | 1           | LIGHTS EXTERIOR  | 10     |    |
| 11  |              |      |      |   | 3000 | 1100 | 20          | 1            | RECP.          | 12  | 11           | EXHAUST FAN | 20   | 1    | 1200 | 1100 | 20          | 1                | LIGHTS | 12 |
| 13  | SPARE        | 20   |      |   | 1000 | 20   | 1           | RECP.        | 14             | 13  | COND / HP 1  | 50          | 3300 |      | 1100 | 20   | 1           | OHD              | 14     |    |
| 15  | RECP.        | 20   |      |   | 1000 | 1000 | 20          | 1            | 208 VOLT RECP. | 16  | 15           |             | 1    | 3300 | 1000 | 20   | 1           | RECP.            | 16     |    |
| 17  | RECP.        | 20   |      |   | 1000 | 1    | 1           |              | 18             | 17  | RECP.        | 20          | 1    | 1000 | 1100 | 20   | 1           | OHD              | 18     |    |
| 19  | SPARE        | 20   |      |   |      | 20   | 1           | SPARE        | 20             | 19  | UHS & RECP.  | 20          | 1    | 800  | 800  | 20   | 1           | UHS & RECP.      | 20     |    |
| 21  | RECP.        | 20   |      |   | 1000 | 1000 | 20          | 1            | RECP.          | 22  | 21           | UHS         | 20   | 1    | 600  | 600  | 20          | 1                | UHS    | 22 |
| 23  | RECP.        | 20   |      |   | 1000 | 20   | 1           | SPARE        | 24             | 23  | RECP.        | 20          | 1    | 600  |      | 20   | 1           | SPARE            | 24     |    |
| 25  | OHD          | 20   |      |   | 1100 | 1000 | 20          | 1            | 208 VOLT RECP. | 26  | 25           |             |      |      |      |      |             |                  | 26     |    |
| 27  | SPARE        | 20   |      |   | 1300 | 1000 | 20          | 1            |                | 28  | 27           |             |      |      |      |      |             |                  | 28     |    |
| 29  | SPARE        | 50   |      |   |      | 20   | 1           | SPARE        | 30             | 29  |              |             |      |      |      |      |             |                  | 30     |    |
| 31  | SPARE        | 1    |      |   |      | 20   | 1           | SPARE        | 32             | 31  |              |             |      |      |      |      |             |                  | 32     |    |
| 33  | SPARE        | 20   |      |   |      | 20   | 1           | SPARE UNIT 2 | 34             | 33  |              |             |      |      |      |      |             |                  | 34     |    |
| 35  | SPARE        | 20   |      |   |      | 20   | 1           | SPARE        | 36             | 35  |              |             |      |      |      |      |             |                  | 36     |    |
| 37  | SPARE        | 20   |      |   |      | 20   | 1           | SPARE        | 38             | 37  |              |             |      |      |      |      |             |                  | 38     |    |
| 39  | SPARE        | 20   |      |   |      | 20   | 1           | SPARE        | 40             | 39  |              |             |      |      |      |      |             |                  | 40     |    |
| 41  | SPARE        | 20   |      |   |      | 20   | 1           | SPARE        | 42             | 41  |              |             |      |      |      |      |             |                  | 42     |    |
| 43  | SPARE        | 20   |      |   | 1000 | 20   | 1           | FAN          | 44             |   |              |             |      |      |      |      |             |                  |        |    |
| 45  | FAN          | 20   |      |   | 1200 | 20   | 1           | SPARE        | 46             |   |              |             |      |      |      |      |             |                  |        |    |
| 47  | SPARE        | 20   |      |   |      | 20   | 1           | SPARE        | 48             |   |              |             |      |      |      |      |             |                  |        |    |
| 49  | SPARE        | 20   |      |   |      | 20   | 1           | SPARE        | 50             |   |              |             |      |      |      |      |             |                  |        |    |
| 51  | SPARE        | 20   |      |   |      | 100  | 1           | PANEL P1     | 52             |   |              |             |      |      |      |      |             |                  |        |    |
| 53  | SPARE        | 20   |      |   |      | 3    | 1           |              | 54             |   |              |             |      |      |      |      |             |                  |        |    |
| 55  | SPARE        | 20   |      |   |      |      | 1           |              | 56             |   |              |             |      |      |      |      |             |                  |        |    |
| 57  |              |      |      |   |      |      |             |              | 58             |   |              |             |      |      |      |      |             |                  |        |    |
| 59  |              |      |      |   |      |      |             |              | 60             |   |              |             |      |      |      |      |             |                  |        |    |

SHEET PRINTED 5/8/2026 11:35:28 AM



REVISIONS  
 3 4-30-26 Revision 3  
 ADDENDUM 5-9-26

12/17/25  
 LAKELAND SCHOOL CORPORATION  
**25082 - PROJECT B.1 - MAINTENANCE BUILDING**  
 E 075 N. LAGRANGE, IN 46761  
 SCHEMATIC DESIGN - PRICING SET



SCHEMATIC DESIGN - PRICING SET  
 12/17/25  
 kM JOB NO.  
 25082  
 DRAWN BY  
 Author

DRAWING NAME  
**ELECTRICAL PLANS**  
 DRAWING NO.  
**E1-1**