



**STUDIO
VIEW**
ARCHITECTURE

Fortville, IN
(317)517-8999



ADDENDUM NO. 5

JOB NAME: ICI Warehouse Expansion Project

PROJECT NUMBER: 32011091-2026-003

DATE OF ADDENDUM: 5/13/2026

THIS ADDENDUM FORMS A PART OF THE CONTRACT DOCUMENTS AND IS ISSUED IN ACCORDANCE WITH THE INSTRUCTIONS TO BIDDERS. ACKNOWLEDGE RECEIPT OF THIS ADDENDUM BY SIGNING THE ADDENDUM ACKNOWLEDGEMENT SECTION OF YOUR PROPOSAL.

General:

- Existing building painting is an “Alternate”

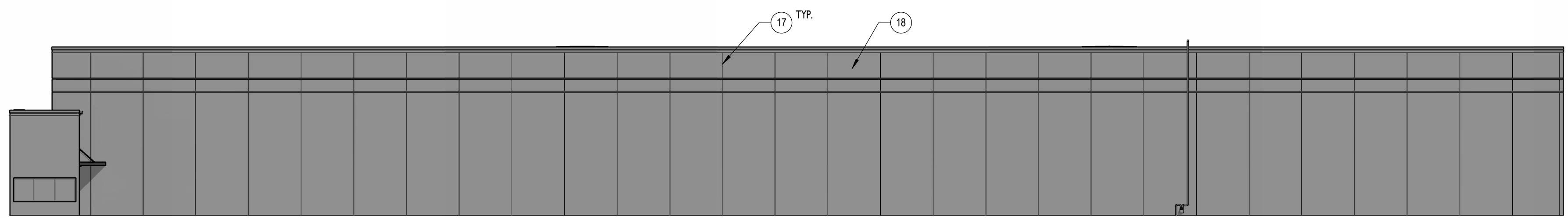
Specifications:

- 099113 – Refer to 3.6.A.1 for exterior paint requirements.

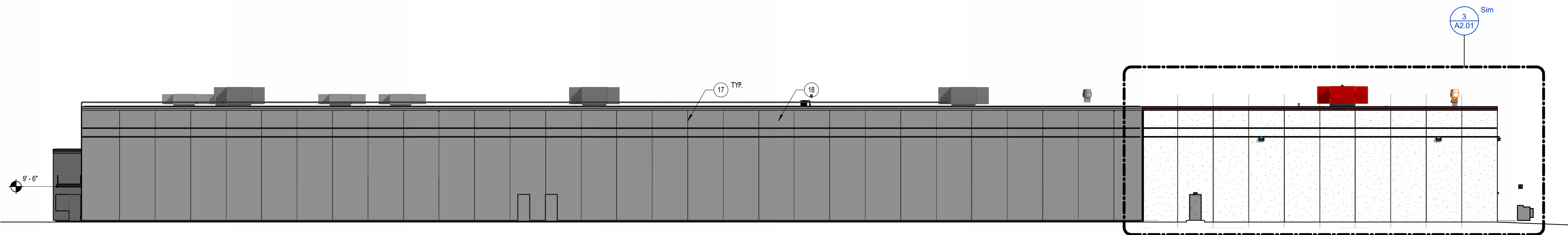
Drawings:

- A200 – OVERALL EXTERIOR ELEVATIONS
 - Revise sheet A200 per attached A200
- A201 – BUILDING ELEVATIONS
 - Revise sheet A201 per attached A201

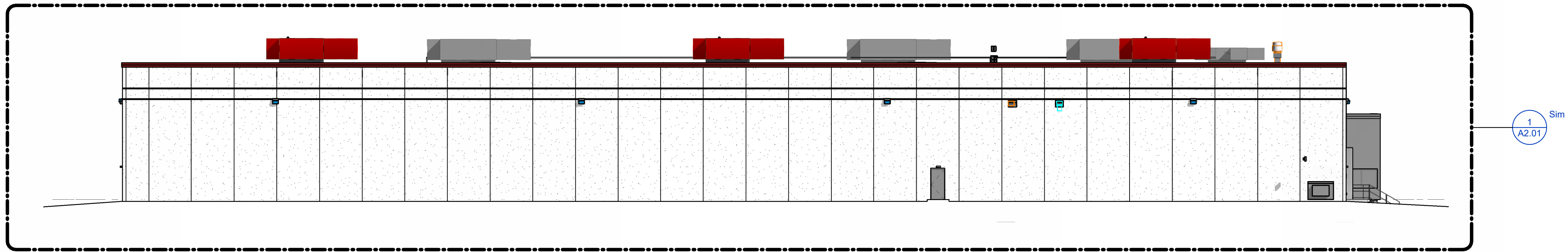
END OF ADDENDUM 5



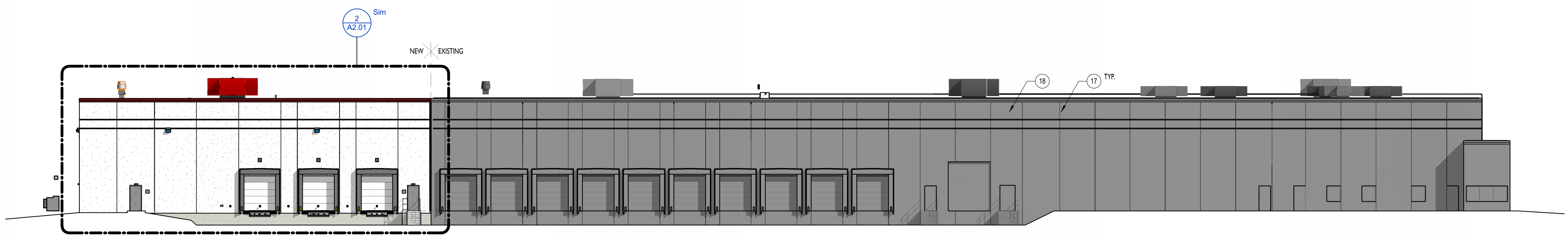
4 OVERALL WEST ELEVATION
 1/16" = 1'-0"
 A2.00



3 OVERALL SOUTH ELEVATION
 1/16" = 1'-0"
 A2.00



2 OVERALL EAST ELEVATION
 1/16" = 1'-0"
 A2.00



1 OVERALL NORTH ELEVATION
 1/16" = 1'-0"
 A2.00

5.4.200 - ELEVATION NOTES

#	Note
1	INSULATED PRECAST PANEL, PRIME AND PAINT FULL EXTERIOR
2	PANEL JOINT, PROVIDE BACKER ROD AND SEALANT FULL HEIGHT
3	PRECAST PANEL HORIZONTAL REveal, SEE TYPICAL DETAIL, PRIME AND PAINT COLOR, RED TO MATCH EXISTING
4	MANUFACTURED METAL ROOF EDGE GRAVELSTOP AND METAL EXTENDER
5	MANUFACTURED HOLLOW METAL DOOR AND FRAME, SEE DOOR SCHEDULE, TO BE PRIMED AND PAINTED, PROVIDE DRIP EDGE AT FRAME HEAD
6	MANUFACTURED EXTERIOR WALL TO WALL EXPANSION JOINT COVER, FULL HEIGHT OF WALL ASSEMBLY
7	MANUFACTURED GRAVEL STOP AND EXTENDER SLIP CONNECTION TO ALLOW FOR MOVEMENT AT EXPANSION JOINT, MANUFACTURER TO PROVIDE ADDITIONAL ANCHORS AND ACCESSORIES AS REQUIRED FOR A FULLY WARRANTED SYSTEM
8	MANUFACTURED SECTION OVERHEAD DOOR, FACTORY PRIMED AND PAINTED, FINISH AS SELECTED BY ARCHITECT FROM MANUFACTURERS FULL RANGE
9	MANUFACTURED DOCK BUMPERS
10	MANUFACTURED DOCK LEVELER LIFT - HYDRAULIC
11	CAST IN PLACE CONCRETE, SEE STRUCTURAL DRAWINGS, PRIMED AND PAINTED WITH HIGH PERFORMANCE PAINT
12	MANUFACTURED SIGNAGE, 8" CAST ALUMINUM LETTERS ON STEEL BACKPLATE, ANCHORED TO PRECAST AS REQUIRED
13	MANUFACTURED SIGNAGE, SIGNAGE TO BE DETERMINED BY OWNER
14	MANUFACTURED SIGNAGE, SIGNAGE TO BE DETERMINED BY OWNER
15	MANUFACTURED DOCK SEAL
16	MANUFACTURED METAL LOUVER, SEE MECHANICAL DRAWINGS
17	ALTERNATE TO BE CHALK EXISTING PRECAST PANEL JOINTS, TYPICAL AT ALL EXISTING PRECAST JOINT LOCATIONS
18	ALTERNATE PRIME AND PAINT EXISTING PRECAST REVEALS, HOLLOW METAL DOORS AND FRAMES



Design Partners:

100% CONSTRUCTION DOCUMENTS
 DEPARTMENT OF CORRECTIONS - PLAINFIELD
 ICI WAREHOUSE EXPANSION

727 MOON RD., PLAINFIELD, IN 46168

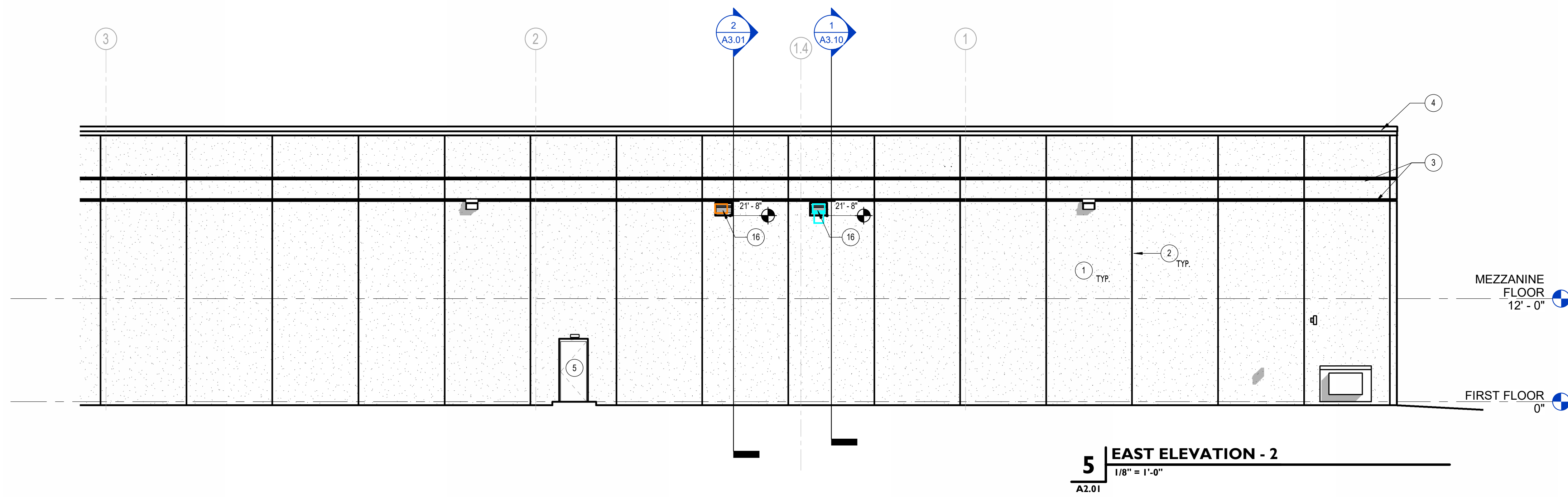
#	Revision	Date
5	Addendum #5	5/13/2026

These Drawings and Specifications, and all copies thereof are and shall remain the property and copyright of the Architect. They shall be used only with respect to this Project and are not to be used on any other Project or Work without prior written permission from the Architect.

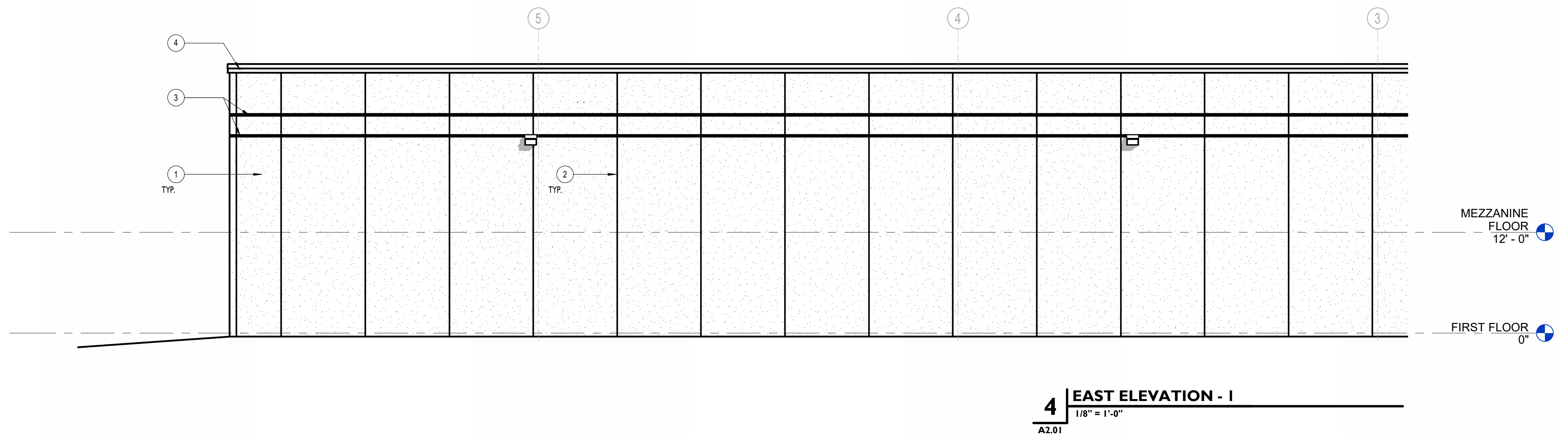
Project #: 32011091-2026-003
 Designed By: Designer
 Drawn By: Author
 Checked By: Checker
 DATE: 5/13/2026 9:58:35 AM

OVERALL EXTERIOR ELEVATIONS

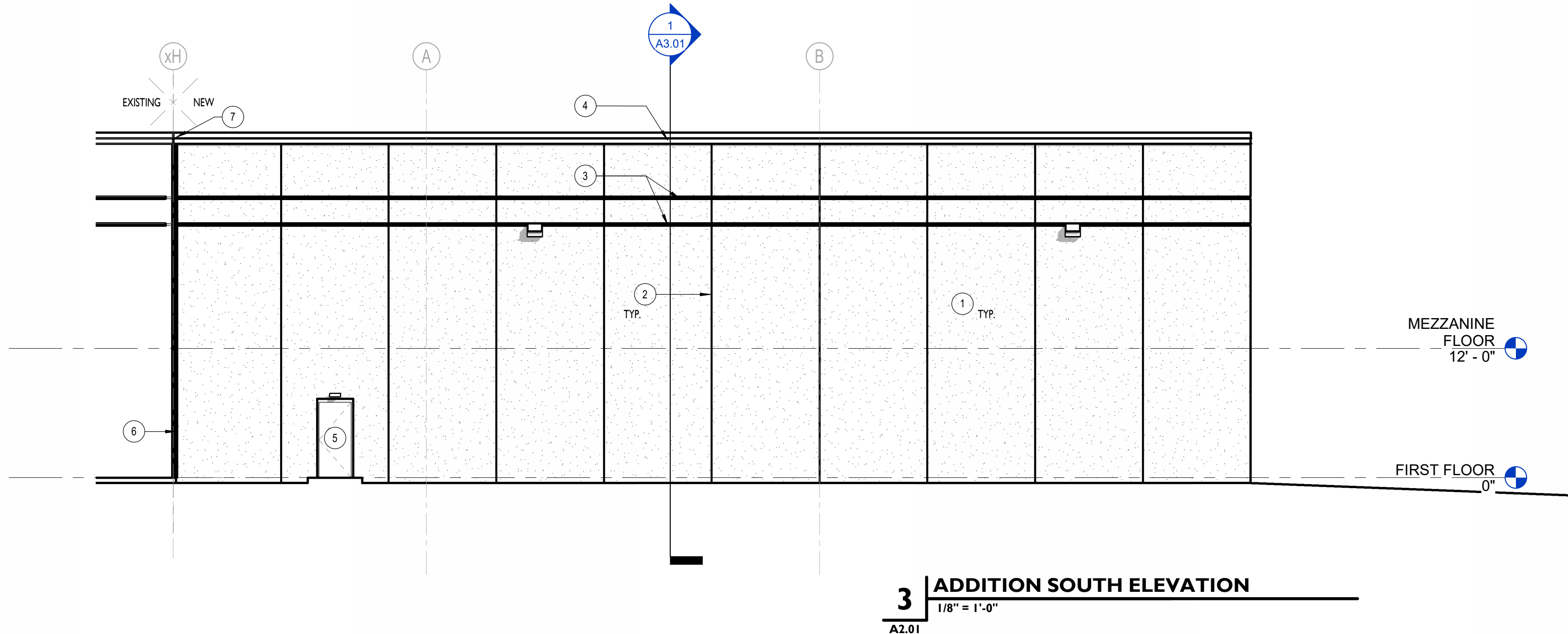
A2.00



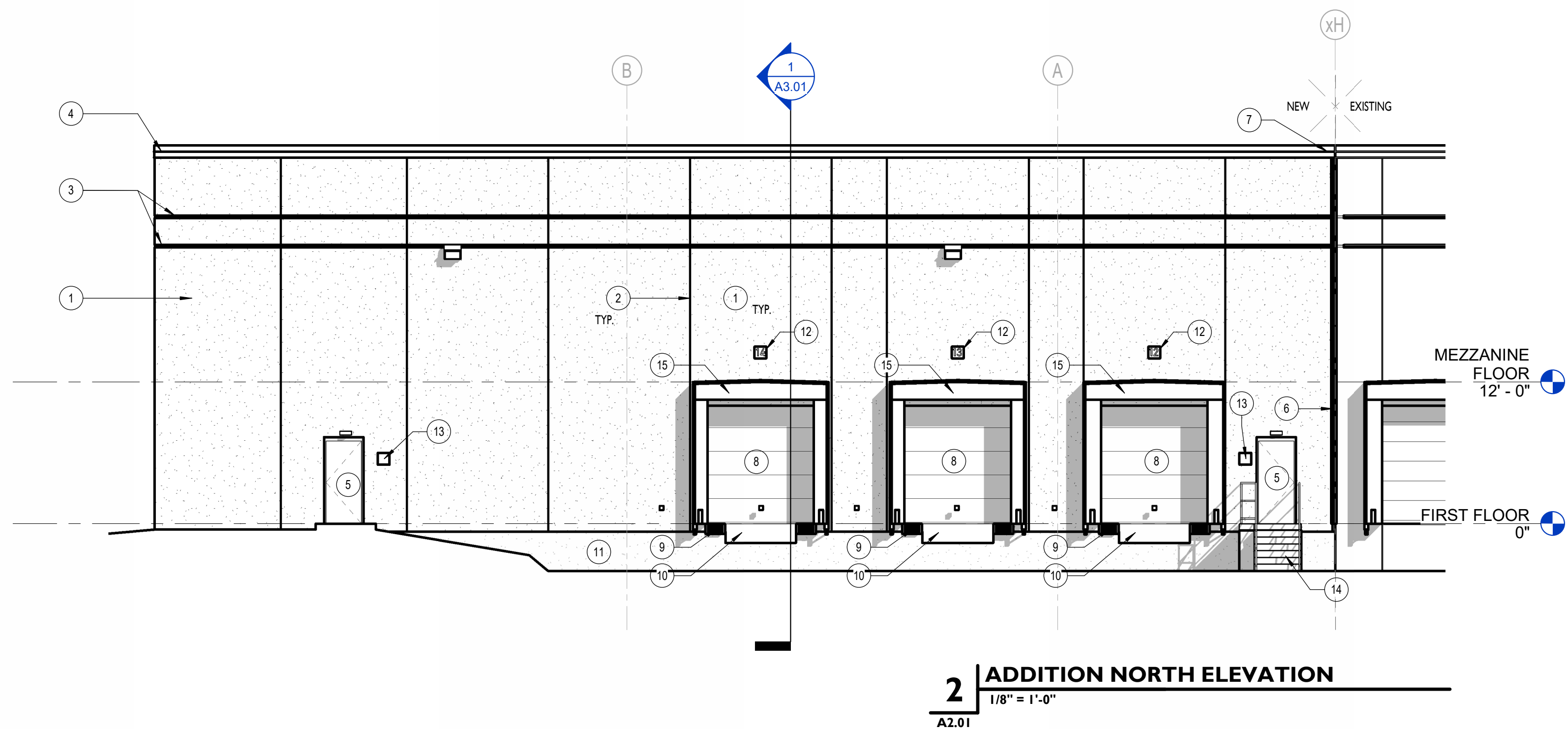
5 EAST ELEVATION - 2
1/8" = 1'-0"
A2.01



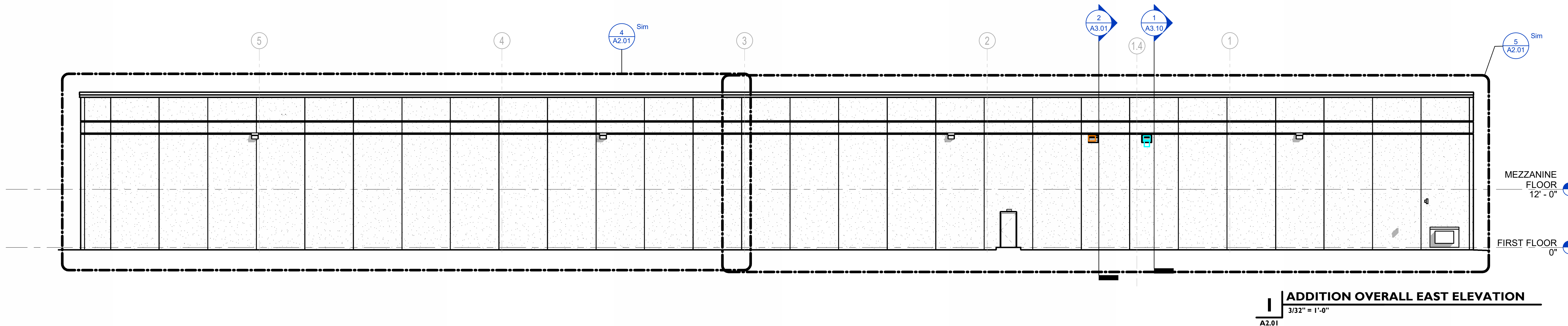
4 EAST ELEVATION - 1
1/8" = 1'-0"
A2.01



3 ADDITION SOUTH ELEVATION
1/8" = 1'-0"
A2.01



2 ADDITION NORTH ELEVATION
1/8" = 1'-0"
A2.01



1 ADDITION OVERALL EAST ELEVATION
3/32" = 1'-0"
A2.01

5.4.200 - ELEVATION NOTES

#	Note
1	INSULATED PRECAST PANEL, PRIME AND PAINT FULL EXTERIOR
2	PANEL JOINT, PROVIDE BACKER ROD AND SEALANT FULL HEIGHT
3	PRECAST PANEL HORIZONTAL REVEAL, SEE TYPICAL DETAIL, PRIME AND PAINT COLOR, RED TO MATCH EXISTING
4	MANUFACTURED METAL ROOF EDGE GRAVELTOP AND METAL EXTENDER
5	MANUFACTURED HOLLOW METAL DOOR AND FRAME, SEE DOOR SCHEDULE, TO BE PRIMED AND PAINTED, PROVIDE DRIP EDGE AT FRAME HEAD
6	MANUFACTURED EXTERIOR WALL TO WALL EXPANSION JOINT COVER, FULL HEIGHT OF WALL ASSEMBLY
7	MANUFACTURED GRAVEL STOP AND EXTENDER SLIP CONNECTION TO ALLOW FOR MOVEMENT AT EXPANSION JOINT, MANUFACTURER TO PROVIDE ADDITIONAL ANCHORS AND ACCESSORIES AS REQUIRED FOR A FULLY WARRANTED SYSTEM
8	MANUFACTURED SECTION OVERHEAD DOOR, FACTORY PRIMED AND PAINTED, FINISH AS SELECTED BY ARCHITECT FROM MANUFACTURERS FULL RANGE
9	MANUFACTURED DOCK BUMPER
10	MANUFACTURED DOCK LEVELER LIFT - HYDRAULIC
11	CAST IN PLACE CONCRETE, SEE STRUCTURAL DRAWINGS, PRIMED AND PAINTED WITH HIGH PERFORMANCE PAINT
12	MANUFACTURED SIGNAGE, 8" CAST ALUMINUM LETTERS ON STEEL BACKPLATE, ANCHORED TO PRECAST AS REQUIRED
13	MANUFACTURED SIGNAGE, SIGNAGE TO BE DETERMINED BY OWNER
14	MANUFACTURED SIGNAGE, SIGNAGE TO BE DETERMINED BY OWNER
15	MANUFACTURED DOCK SEAL
16	MANUFACTURED METAL LOUVER, SEE MECHANICAL DRAWINGS
17	ALTERNATE RE-CALL EXISTING PRECAST PANEL JOINTS, TYPICAL AT ALL EXISTING PRECAST JOINT LOCATIONS
18	ALTERNATE PRIME AND PAINT EXISTING PRECAST REVEALS, HOLLOW METAL DOORS AND FRAMES



Design Partners:

100% CONSTRUCTION DOCUMENTS
DEPARTMENT OF CORRECTIONS - PLAINFIELD
ICI WAREHOUSE EXPANSION

727 MOON RD., PLAINFIELD, IN 46168

#	Revision	Date
5	Addendum #5	5/13/2026

These Drawings and Specifications, and all copies thereof are and shall remain the property and copyright of the Architect. They shall be used only with respect to this Project and are not to be used on any other Project or Work without prior written permission from the Architect.

Project #: 32011091-2026-003
Designed By: Designer
Drawn By: Author
Checked By: Checker
DATE: 5/13/2026 9:58:46 AM

BUILDING ELEVATIONS

A2.01