

# ADDENDUM

ADDENDUM NO: 4

PROJECT: Hamilton Heights High School Phase 2 Projects

PROJECT NO: 2023060

DATE: 03/07/2024

BY: Brent Hite



This Addendum is issued in accordance with the provisions of "The General Conditions of the Contract for Construction," Article 1, "Contract Documents" and becomes a part of the Contract Documents as provided therein. This Addendum includes:

Addendum Pages:

**1-3**

Attached Documents:

-

Attached Drawing Sheets:

**E100, E213, E501, E612**

## **PART 0 - GENERAL INFORMATION**

0.1 NOT USED

A. Not Used

## **PART 1 - BIDDING REQUIREMENTS**

1.1 NOT USED

A. Not Used

## **PART 2 - SPECIFICATIONS**

2.1 NOT USED

A. Not Used

## **PART 3 - DRAWINGS**

### **ELECTRICAL**

#### 3.1 E100 – SITE PLAN – ELECTRICAL

- A. Add Plan Notes for refeeding existing loads
- B. Reissue drawing in its entirety

#### 3.2 E213 – OUTBUILDING FLOOR PLANS – ELECTRICAL

- A. Add Panelboard OL4.
- B. Reissue drawing in its entirety.

#### 3.3 E501 – RISER DIAGRAM – ELECTRICAL

- A. Add Panelboard OL4.
- B. Reissue drawing in its entirety.

#### 3.4 E612 – SCHEDULES – PANELBOARDS

- A. Add Panelboard Schedule OL4.
- B. Reissue drawing in its entirety updating panelboard schedules

## **PART 4 - OTHER ITEMS**

#### 4.1 NOT USED

- A. Not Used

## **PART 5 - QUESTIONS AND ANSWERS**

#### 5.1 Question:

We see that you updated the feed for the football scoreboard panel, but it seems you didn't address the play clocks and sports field boxes we mentioned. Both of those are currently fed out of the football scoreboard panel. Do you still want to separate the play clocks and run them back to the new locker room/concession building?

#### Answer:

Play Clocks, and field boxes were fed from a Panelboard at the Football Scoreboard.

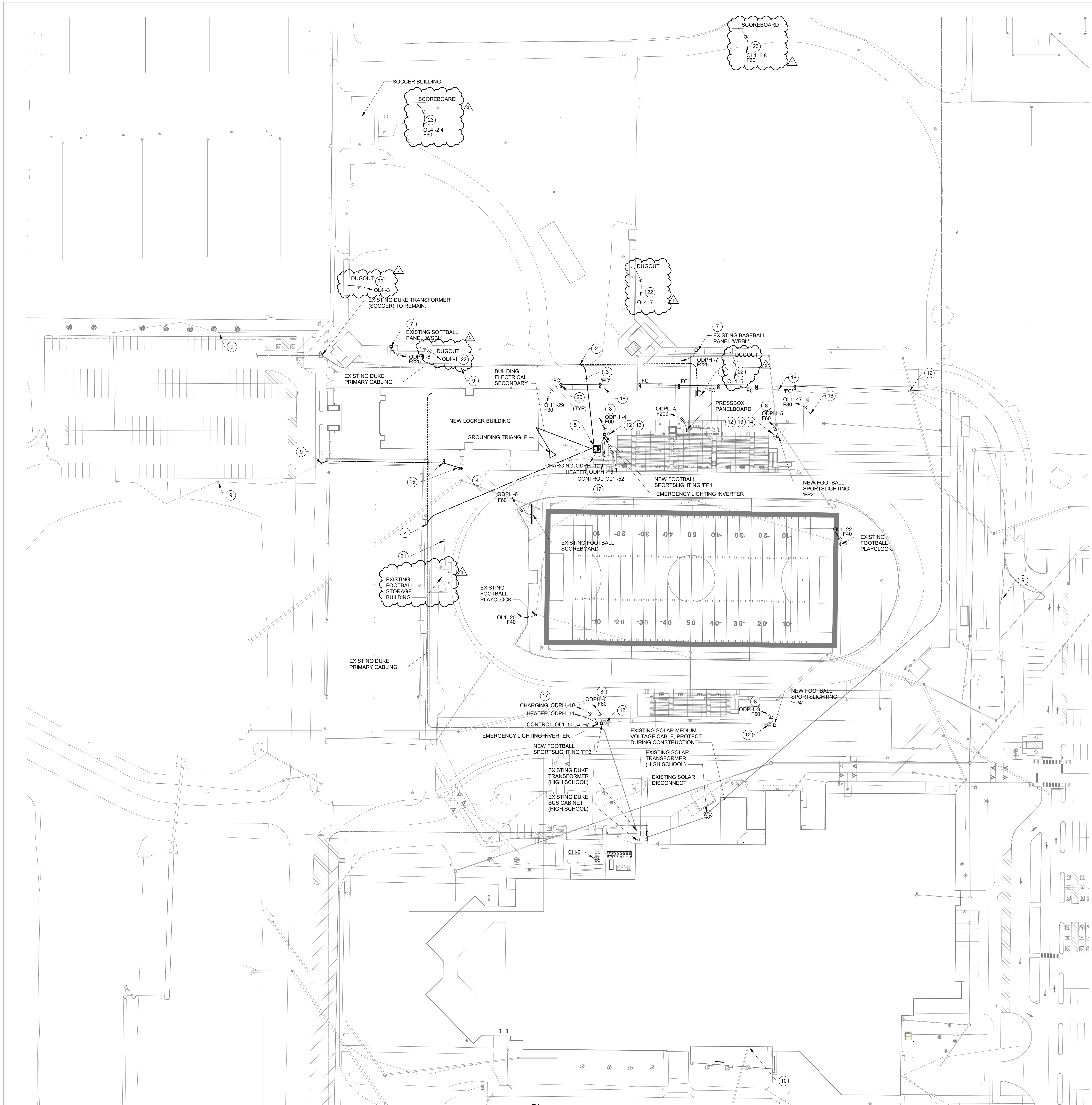
5.2 Question:

We see that you added the tennis courts and storage building to be refed, but the baseball and softball scoreboards, as well as the 120V circuits to the dugouts, remain unaccounted for. They are all currently fed out of the building being demolished. I have attached pictures of the panels and panel schedules for reference.

Answer:

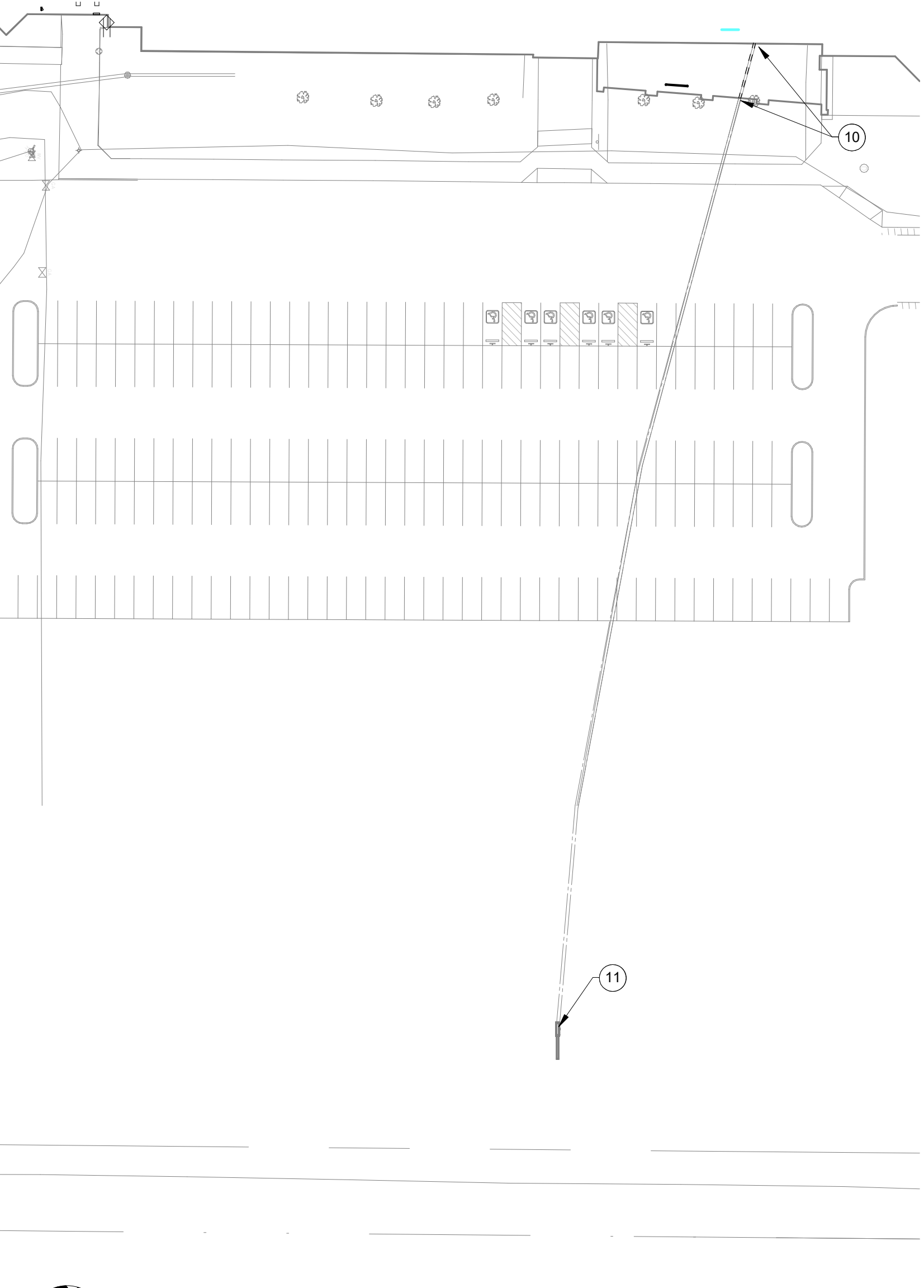
100A 120/208V Panel OL4 was added to accommodate existing circuits. See Addendum #4.

**END ADDENDUM #3**



- RENOVATION LEGEND:**
- WORK TO BE INSTALLED
  - WORK TO REMAIN
- GENERAL NOTES:**
1. SEE E001 FOR GENERAL NOTES.
- PLAN NOTES:**
1. EXISTING TRANSFORMER AND PAD TO BE REMOVED. COORDINATE WITH DUKE ENERGY.
  2. EXISTING ELECTRIC PRIMARY FEEDER TO BE REMOVED FROM EXISTING TRANSFORMER TO THIS POINT. COORDINATE WITH DUKE ENERGY.
  3. PROVIDE NEW 4" PVC CONDUIT FOR UTILITY PRIMARY. CONNECT TO EXISTING CONDUIT AND EXTEND TO NEW UTILITY TRANSFORMER. DUKE ENERGY TO INSTALL PRIMARY CABLING.
  4. PROVIDE NEW 4" PVC CONDUIT FOR UTILITY PRIMARY. EXTEND FROM NEW UTILITY TRANSFORMER AND CONNECT TO EXISTING PRIMARY CONDUIT TO HIGH SCHOOL. DUKE ENERGY TO INSTALL PRIMARY CABLING.
  5. NEW UTILITY TRANSFORMER. SEE DETAILS ON DRAWING E404.
  6. LOCKER BUILDING SERVICE FEEDER. SEE RISER ON DRAWING E501 FOR SIZING.
  7. EXISTING PANELBOARD TO BE REFEED FROM NEW LOCKER BUILDING. REMOVE EXISTING FEEDER CABLE. ABANDON EXISTING CONDUIT BELOW GRADE.
  8. NEW FOOTBALL LIGHTING POLE AND BASE.
  9. EXISTING PARKING LOT LIGHTING TO REMAIN. EXISTING CIRCUIT FROM HIGH SCHOOL BUILDING.
  10. EXISTING CONDUITS FOR POWER TO EXISTING MONUMENT SIGN ARE AFFECTED BY DEMOLITION OF EXISTING EXTERIOR WALL. INTERCEPT CONDUITS AND ROUTE NEW CONDUITS IN NEW EXTERIOR WALL. EXTEND CABLING AS REQUIRED TO EXISTING PANELBOARD.
  11. MONUMENT SIGN.
  12. DEMOLISH EXISTING SPORTSLIGHTING POLE AND BASE.
  13. EXISTING SPEAKER ON POLE TO BE TURNED OVER TO OWNER.
  14. EXISTING BUS ANTENNA ON POLE TO BE TURNED OVER TO OWNER.
  15. PARKING LOT POLE TO BE RELOCATED AND ORIENTATED TO POINT SOUTH. DEMOLISH EXISTING POLE BASE AND PROVIDE NEW POLE BASE. EXTEND CIRCUIT FROM REMAINING PARKING LOT FIXTURES.
  16. PROVIDE CIRCUIT FOR IRRIGATION CONTROL PANEL.
  17. SPORTSLIGHTING EMERGENCY INVERTER. SEE SCHEMATIC ON DRAWING E403. PROVIDE EQUIPMENT PAD.
  18. DEMOLISH EXISTING POLE AND BASE. TURN OVER HEAD TO OWNER. CIRCUIT TO REMAIN TO EXISTING FIXTURES STILL ON CIRCUIT.
  19. EXISTING PARKING LOT LIGHTING TO REMAIN. EXTEND NEW CIRCUIT FROM NEW LIGHTING TO THIS FIXTURE.
  20. SEE POLE BASE DETAIL ON DRAWING E403.
  21. PROVIDE NEW CIRCUITS FROM PANELBOARD 'OL4' TO EXISTING ELECTRIC HANDHOLE FOR EXISTING TENNIS COURT AND STORAGE BUILDING CIRCUITS FED FROM DEMOLISHED LOCKER BUILDING. (7) 120V, 20A/1P CIRCUITS MATCH EXISTING CONDUCTOR SIZES.
  22. INTERCEPT EXISTING CIRCUITS FOR EXISTING DUGOUTS FED FROM DEMOLISHED LOCKER BUILDING TO CIRCUIT INDICATED. FIELD VERIFY LOCATION OF UNDERGROUND CIRCUITS AND PROVIDE HANDHOLE COORDINATE LOCATION OF HANDHOLE WITH OWNER/ENGINEER PRIOR TO ROUGH-IN. MATCH EXISTING CONDUCTOR SIZES.
  23. INTERCEPT EXISTING CIRCUITS FOR EXISTING SCOREBOARD FED FROM DEMOLISHED LOCKER BUILDING TO CIRCUIT INDICATED. FIELD VERIFY LOCATION OF UNDERGROUND CIRCUITS AND PROVIDE HANDHOLE COORDINATE LOCATION OF HANDHOLE WITH OWNER/ENGINEER PRIOR TO ROUGH-IN. MATCH EXISTING CONDUCTOR SIZES.

**SITE PLAN - ELECTRICAL**  
SCALE: 1" = 50'-0"  
NORTH



**SITE PLAN - EAST - ELECTRICAL**  
SCALE: 1" = 50'-0"  
NORTH



**CSO**  
8831 Keystone Crossing, Indianapolis, IN 46240  
317.842.7800 | CSO@csoc.net  
© 2019 CSO Architects, Inc. All Rights Reserved.

**R.E. Dimond and Associates, Inc.**  
Consulting Engineers  
732 North Capitol Avenue  
Phone: (317) 634-6772  
Fax: (317) 638-8725

**HAMILTON HEIGHTS SCHOOL CORPORATION**  
**HAMILTON HEIGHTS HIGH SCHOOL**  
**PHASE 2 PROJECTS**  
25802 IN-19 Site 2, Arcadia, IN 46030

**SCOPE DRAWINGS:**  
These drawings indicate the general scope of the project in terms of architectural design concept, the structural, mechanical and electrical systems.  
The drawings are not necessarily indicative of the work required for the performance and completion of the project.  
On the basis of the general scope indicated on drawings, the trade contractors shall furnish all items required for the proper execution and completion of the work.

**REVISIONS:**

NO.	DESCRIPTION	DATE
1	Addendum #1	2024-02-22
2	Addendum #3	2024-03-04
3	Addendum #4	2024-03-07

ISSUE DATE	DRAWN BY	CHECKED BY
02/08/2024	AJS	AJS

**DRAWING TITLE:**  
**SITE PLAN - ELECTRICAL**

**CERTIFIED BY:**  
AARON J. SCHIPPEL  
No. PE10504720  
STATE OF INDIANA  
02/08/2024

**DRAWING NUMBER:**  
**E100**

**PROJECT NUMBER:**  
**2022060**



Hamilton Heights School Corporation

CSO  
8831 Keystone Crossing, Indianapolis, IN 46240  
317.284.7800 | CSO@csinet.net

RE. Dimond and Associates, Inc.  
Consulting Engineers  
732 North Capital Avenue  
Phone: (317) 634-6872  
Fax: (317) 638-8725

HAMILTON HEIGHTS SCHOOL CORPORATION  
HAMILTON HEIGHTS HIGH SCHOOL  
PHASE 2 PROJECTS  
25802 IN-19 Site 2, Arcadia, IN 46030

SCOPE DRAWINGS:  
These drawings indicate the general scope of the project. The drawings are not intended to be a contract. The drawings are not intended to be a contract. The drawings are not intended to be a contract. The drawings are not intended to be a contract.

REVISIONS:  
3 Addendum #4 2024-03-07

ISSUE DATE DRAWN BY CHECKED BY  
02/08/2024 AJS AJS

DRAWING TITLE:  
OUTBUILDING FLOOR PLANS - POWER

CERTIFIED BY:  
No. PE10504720  
STATE OF INDIANA  
02/08/2024

DRAWING NUMBER  
E213

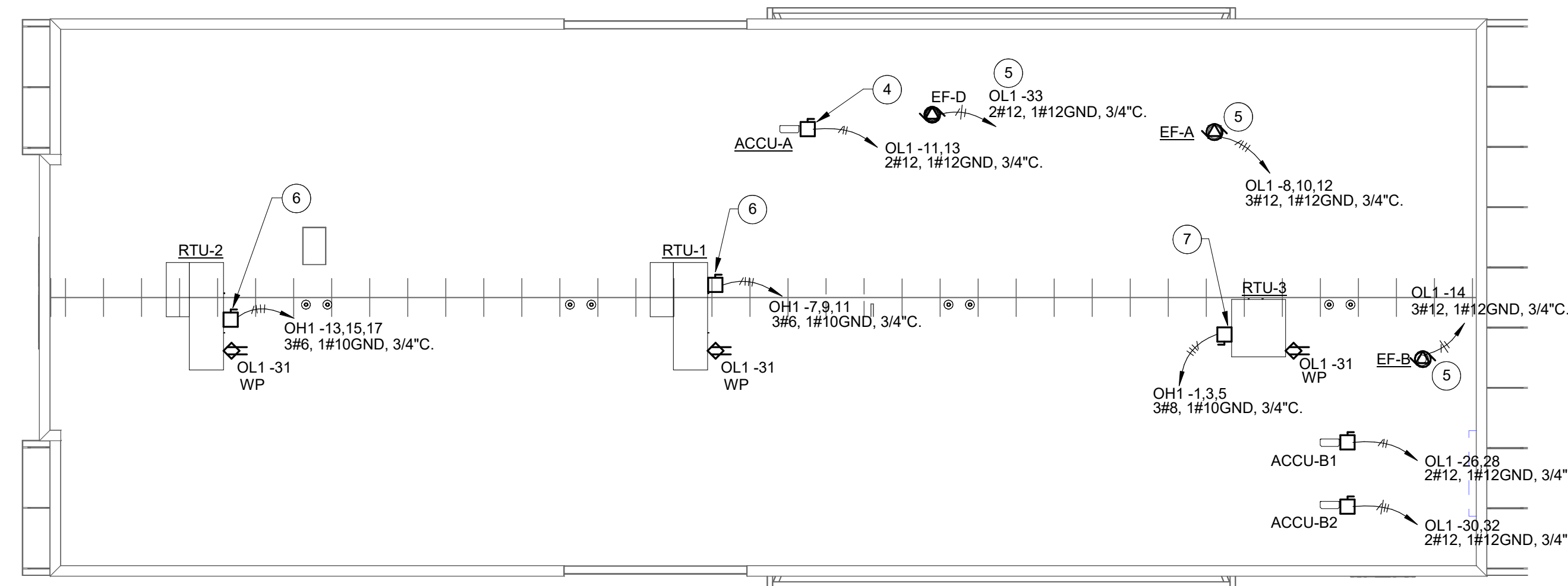
PROJECT NUMBER  
2022060

RENOVATION LEGEND:

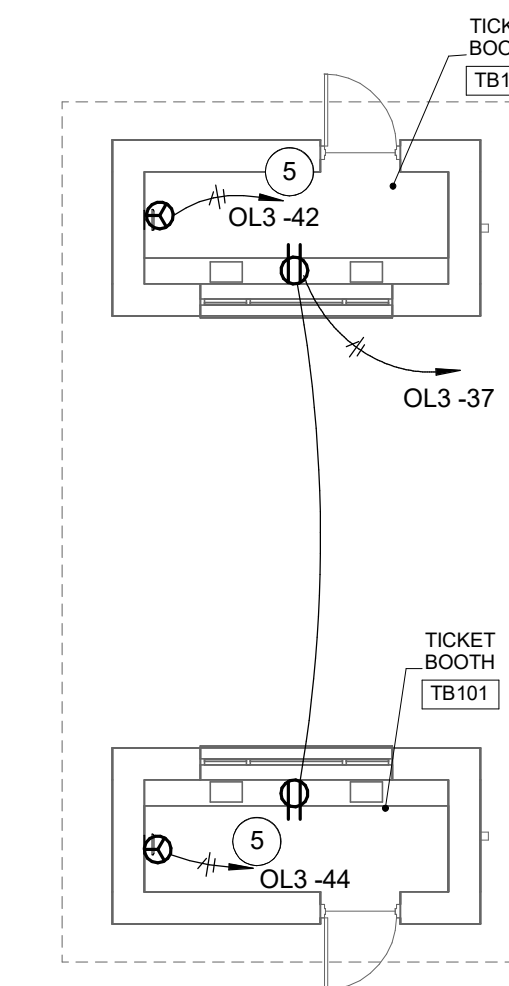
- WORK TO BE INSTALLED
- WORK TO REMAIN

GENERAL NOTES:

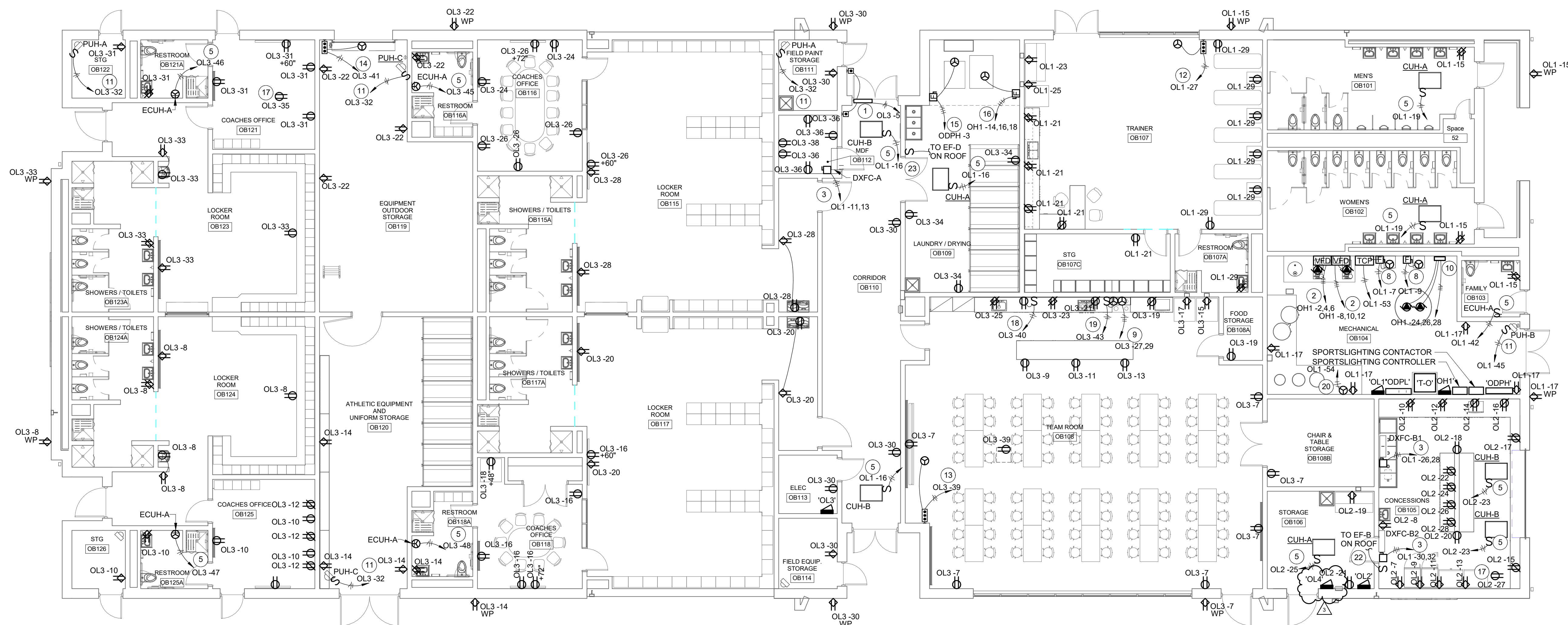
- SEE E001 FOR GENERAL NOTES.
- PROVIDE CONNECTION TO ADA DOOR OPERATOR, (2#12, 1#12GND, 3/4" C.).
- E.C. TO INSTALL VFD FINISHED BY OTHERS.
- PROVIDE A 208V, 30A, 2 POLE FUSED DISCONNECT IN A NEMA 1 ENCLOSURE. FUSE AT 15 AMPS. (2#12, 1#12GND, 3/4" C.).
- PROVIDE A 208V, 30A 2 POLE FUSED DISCONNECT IN A NEMA 3R ENCLOSURE. FUSE AT 15 AMPS. CONNECT TO INDOOR UNIT. (3#12, 1#12GND, 3/4" C.).
- CONNECT TO MANUFACTURERS SUPPLIED DISCONNECT.
- PROVIDE A 480V, 60A, 3 POLE FUSED DISCONNECT IN A NEMA 3R ENCLOSURE. FUSE AT 45 AMPS.
- PROVIDE A 480V, 60A, 3 POLE FUSED DISCONNECT IN A NEMA 1 ENCLOSURE. FUSE AT 20 AMPS.
- PROVIDE A NEMA 14-50R FOR ELECTRIC RANGE, (3#6, 1#10GND, 3/4" C.).
- PROVIDE CIRCUIT TO EJECTOR PUMP CONTROL PANEL. EXTEND TO PUMPS IN EJECTOR PIT. (3#12, 1#15GND, 3/4" C.).
- PROVIDE 120V, 20A TOGGLE SWITCH FOR PROP HEATER. MOUNT ON SIDE OF UNIT.
- PROVIDE CIRCUIT FOR MOTORIZED SHADES. PROVIDE CONDUIT FROM MOTOR TO CONTROL LOCATION FOR CONTROL WIRING.
- PROVIDE CIRCUIT FOR MOTORIZED PROJECTION SCREEN. PROVIDE CONDUIT FROM MOTOR TO CONTROL LOCATION FOR CONTROL WIRING.
- PROVIDE CIRCUIT FOR MOTORIZED OVERHEAD DOOR. PROVIDE CONDUIT FROM MOTOR TO CONTROL LOCATION FOR CONTROL WIRING.
- PROVIDE A 480V, 125A, 3 POLE FUSED DISCONNECT IN A NEMA 1 ENCLOSURE. FUSE AT 125 AMPS.
- PROVIDE A 480V, 30A, 3 POLE FUSED DISCONNECT IN A NEMA 1 ENCLOSURE. FUSE AT 25 AMPS.
- PROVIDE RECEPTACLE IN CABINET FOR CLOCK SYSTEM.
- RECEPTACLE BELOW SINK FOR GARBAGE DISPOSAL. CONTROL WITH SWITCH ABOVE COUNTER.
- PROVIDE CIRCUIT ABOVE RANGE FOR HOOD. PROVIDE SWITCH ABOVE COUNTER.
- PROVIDE CIRCUIT FOR VAV CONTROL TRANSFORMER.
- PROVIDE A 120V, 1PH, 1/4 HORSEPOWER RATED TOGGLE SWITCH. PROVIDE RELAY TO CONNECT FAN TO BAS. COORDINATE WITH TEMPERATURE CONTROL CONTRACTOR.
- PROVIDE A 120V, 1PH, 1/10 HORSEPOWER RATED TOGGLE SWITCH.



OUTBUILDING ROOF PLAN - ELECTRICAL  
SCALE: 1/16" = 1'-0"  
NORTH



TICKET BOOTH PLAN - POWER  
SCALE: 1/8" = 1'-0"  
NORTH



OUTBUILDING FLOOR PLAN - POWER  
SCALE: 1/8" = 1'-0"  
NORTH





Hamilton Heights School Corporation



8831 Keystone Crossing, Indianapolis, IN 46240  
317.847.7800 | CSOinc.net  
© 2019 CSO Architects, Inc. All Rights Reserved



732 North Capital Avenue  
Phone: (317) 634-4672  
Fax: (317) 638-8725

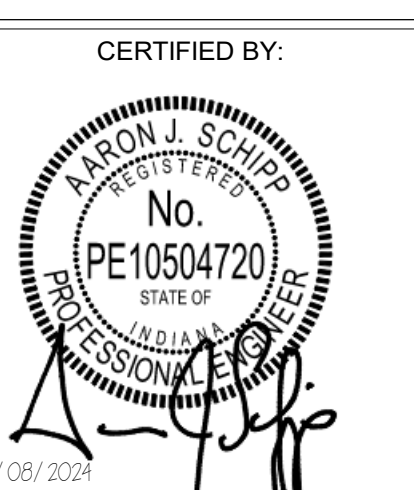
PROJECT:  
HAMILTON HEIGHTS SCHOOL CORPORATION  
HAMILTON HEIGHTS HIGH SCHOOL  
PHASE 2 PROJECTS  
25802 IN-19 Site 2, Arcadia, IN 46030

SCOPE DRAWINGS:  
These drawings indicate the general scope of the project. The drawings are not intended to be used for the design of electrical, mechanical and electrical systems. The drawings are not intended to be used for the design of work required for the performance and completion of the project. On the basis of the general scope indicated on drawings, the contractor shall furnish all items required for the proper execution and completion of the work.

REVISIONS:  
1 Addendum #1 2024-02-22  
2 Addendum #3 2024-03-04  
3 Addendum #4 2024-03-07

ISSUE DATE DRAWN BY CHECKED BY  
02/08/2024 AJS AJS

DRAWING TITLE:  
RISER DIAGRAM - ELECTRICAL



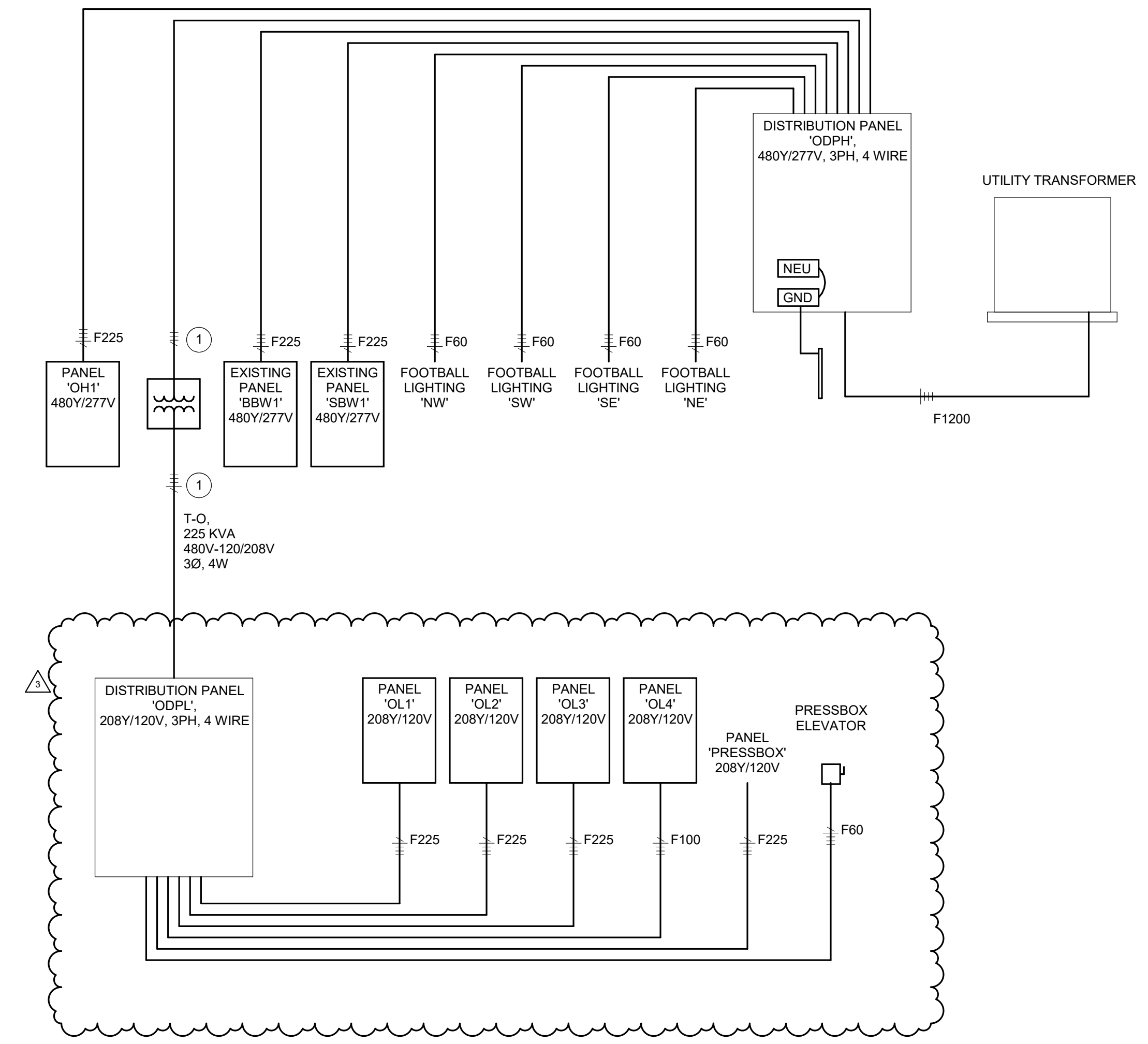
DRAWING NUMBER  
E501

PROJECT NUMBER  
2022060

GENERAL NOTES:

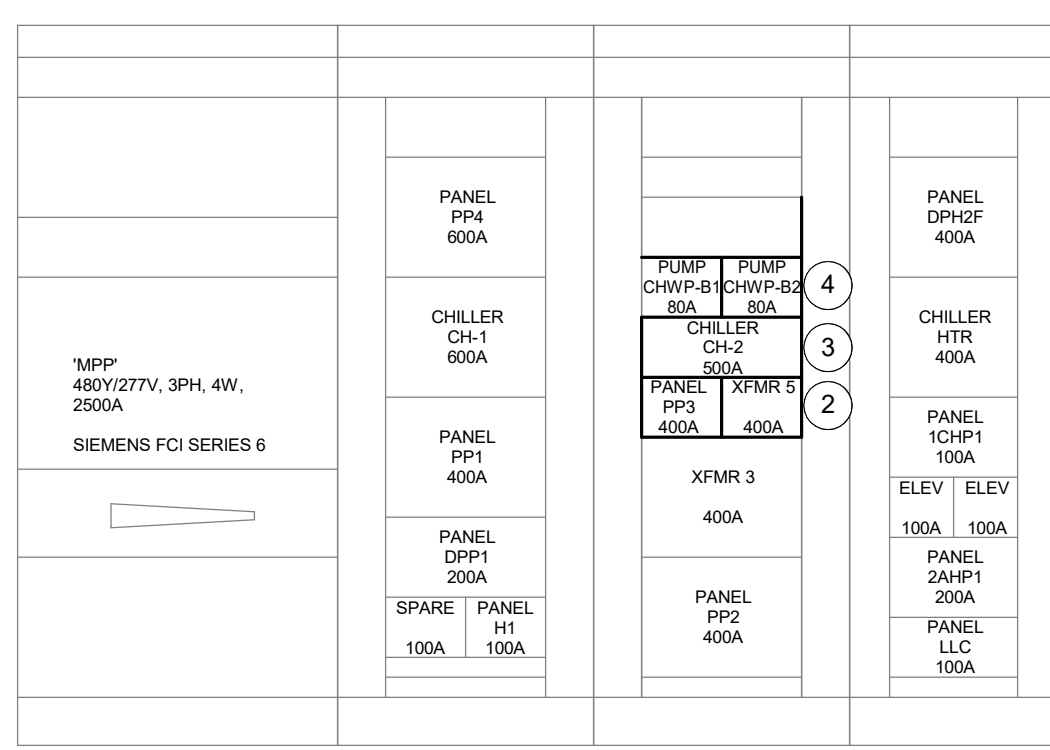
- SEE E001 FOR GENERAL NOTES.
- REFER TO DISTRIBUTION TRANSFORMER GROUNDING DETAIL FOR WIRE SIZES.
- REMOVE (2) 400AF/400AT FUSED SWITCHES AND PROVIDE 400A TWIN BREAKERS IN EXISTING SWITCHBOARD. CONNECT EXISTING LOADS TO NEW BREAKERS.
- PROVIDE A NEW 600AF/500AT CIRCUIT BREAKER IN EXISTING SWITCHBOARD.
- PROVIDE A TWIN 100AF/800AT BREAKERS IN EXISTING SWITCHBOARD.

PLAN NOTES:



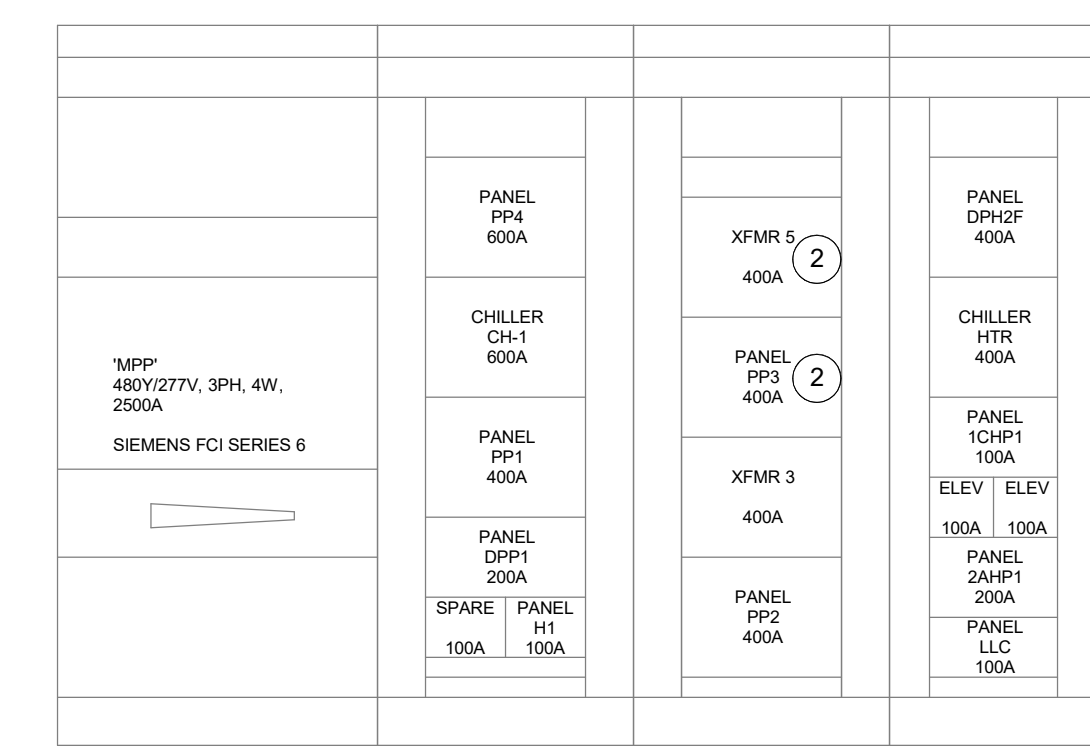
B ELECTRICAL SINGLE-LINE DIAGRAM LOCKER BUILDING

SCALE: NONE



D MPP ELEVATION

SCALE: NONE



C MPP ELEVATION (EXISTING)

SCALE: NONE

FEEDER/BRANCH CIRCUIT DESIGNATION	CONDUCTOR SIZE PER CONDUIT		CONDUIT SIZE AND QUANTITY						
	PHASE & NEUTRAL	EQUIPMENT GROUND	1P, 1N, 1G, 2P, 1G	2P, 1N, 1G, 3P, 1G	3P, 1N, 1G	3P, 2N, 1G	3P, 3N, 1G	3P, 1N, 2G	
F20									
F30									
F40-F50									
F60									
F70-F80									
F90-F100									
F110									
F125									
F150									
F175	4/0	4	1 1/2"	2"	2 1/2"	2 1/2"	3"	2 1/2"	
F200	250	4	2"	2 1/2"	2 1/2"	3"	3"	3"	
F225	300	2	2"	2 1/2"	3"	3"	3"	3"	
F250	350	2	2"	2 1/2"	3"	3"	3 1/2"	3"	
F300	500	2	2 1/2"	3"	3 1/2"	3 1/2"	4"	3 1/2"	
F350	700	1	3"	3 1/2"	4"	5"	5"	5"	
F400	250	1	(2) 2"	(2) 2 1/2"	(2) 2 1/2"	(2) 3"	(2) 3"	(2) 3"	
F450	300	1/0	(2) 2"	(2) 2 1/2"	(2) 3"	(2) 3"	(2) 3"	(2) 3"	
F500	350	1/0	(2) 2"	(2) 2 1/2"	(2) 3"	(2) 3"	(2) 3 1/2"	(2) 3"	
F600	500	2/0	(2) 2 1/2"	(2) 3"	(2) 3 1/2"	(2) 3 1/2"	(2) 4"	(2) 3 1/2"	
F700-800	700	3/0	(2) 3"	(2) 3 1/2"	(2) 4"	(2) 5"	(2) 5"	(2) 5"	
F900	500	4/0	(3) 2 1/2"	(3) 3"	(3) 3 1/2"	(3) 3 1/2"	(3) 4"	(3) 3 1/2"	
F1000	600	4/0	(3) 3"	(3) 3"	(3) 3 1/2"	(3) 4"	(3) 5"	(3) 4"	
F1200	500	250	(4) 2 1/2"	(4) 3"	(4) 3 1/2"	(4) 3 1/2"	(4) 4"	(4) 3 1/2"	
F1600	600	350	(5) 3"	(5) 3"	(5) 3 1/2"	(5) 4"	(5) 5"	(5) 4"	
F2000	600	400	(6) 3"	(6) 3"	(6) 3 1/2"	(6) 4"	(6) 5"	(6) 4"	
F2500	700	600	(7) 3"	(7) 3 1/2"	(7) 4"	(7) 5"	(7) 5"	(7) 5"	
F3000	700	600	(8) 3"	(8) 3 1/2"	(8) 4"	(8) 5"	(8) 5"	(8) 5"	
F4000	750	750	(11) 3"	(11) 3 1/2"	(11) 4"	(11) 5"	(11) 5"	(11) 5"	

NOTES:  
1. CONDUCTOR SIZES ARE BASED UPON 75°C AMPACITY. NO DERATING AND NO ADJUSTMENTS FOR VOLTAGE DROP. ADJUST AS REQUIRED BY EACH FIELD CONDITION IN ORDER TO COMPLY WITH UL AND NEC.

FEEDER/BRANCH CIRCUIT DESIGNATION	CONDUCTOR SIZE PER CONDUIT		CONDUIT SIZE AND QUANTITY						
	PHASE & NEUTRAL	EQUIPMENT GROUND	1P, 1N, 1G, 2P, 1G	2P, 1N, 1G, 3P, 1G	3P, 1N, 1G	3P, 2N, 1G	3P, 3N, 1G	3P, 1N, 2G	
F20	12	12	3/4"	3/4"	3/4"	3/4"	3/4"	3/4"	
F30	10	10	3/4"	3/4"	3/4"	3/4"	3/4"	3/4"	
F40-F50	8	10	3/4"	3/4"	3/4"	1"	1"	3/4"	
F60	6	10	3/4"	3/4"	1"	1"	1"	1"	
F70-F80	4	8	3/4"	1"	1 1/4"	1 1/4"	1 1/4"	1 1/4"	
F90-F100	3	8	1"	1"	1 1/4"	1 1/4"	1 1/2"	1 1/2"	
F110	2	6	1"	1 1/4"	1 1/4"	1 1/2"	1 1/2"	1 1/2"	
F125	1	6	1 1/4"	1 1/4"	1 1/2"	2"	2"	1 1/2"	
F150	1/0	6	1 1/4"	1 1/2"	1 1/2"	2"	2"	2"	
F175	2/0	6	1 1/4"	1 1/2"	2"	2"	2 1/2"	2"	
F200	3/0	6	1 1/2"	2"	2"	2 1/2"	2 1/2"	2"	
F225	4/0	4	1 1/2"	2"	2 1/2"	2 1/2"	3"	2 1/2"	
F250	250	4	2"	2"	2 1/2"	3"	3"	2 1/2"	
F300	350	4	2"	2 1/2"	3"	3"	3 1/2"	3"	
F350	500	3	2 1/2"	3"	3 1/2"	4"	4"	3 1/2"	
F400	3/0	3	(2) 1 1/2"	(2) 2"	(2) 2"	(2) 2 1/2"	(2) 2 1/2"	(2) 2"	
F450	4/0	2	(2) 1 1/2"	(2) 2"	(2) 2 1/2"	(2) 2 1/2"	(2) 3"	(2) 2 1/2"	
F500	250	2	(2) 2"	(2) 2"	(2) 2 1/2"	(2) 3"	(2) 3"	(2) 2 1/2"	
F600	350	1	(2) 2"	(2) 2 1/2"	(2) 3"	(2) 3"	(2) 3 1/2"	(2) 3"	
F700-800	500	1/0	(2) 2 1/2"	(2) 3 1/2"	(2) 3 1/2"	(2) 4"	(2) 4"	(2) 3 1/2"	
F900	350	2/0	(3) 2"	(3) 2 1/2"	(3) 3"	(3) 3"	(3) 3 1/2"	(3) 3"	
F1000	500	2/0	(3) 2 1/2"	(3) 3"	(3) 3 1/2"	(3) 4"	(3) 4"	(3) 3 1/2"	
F1200	350	3/0	(4) 2 1/2"	(4) 2 1/2"	(4) 3"	(4) 3"	(4) 3 1/2"	(4) 3"	
F1600	500	4/0	(5) 2 1/2"	(5) 3"	(5) 3 1/2"	(5) 4"	(5) 4"	(5) 3 1/2"	
F2000	500	250	(6) 2 1/2"	(6) 3 1/2"	(6) 4"	(6) 4"	(6) 4"	(6) 3 1/2"	
F2500	500	350	(7) 3"	(7) 3"	(7) 3 1/2"	(7) 4"	(7) 4"	(7) 3 1/2"	
F3000	500	600	(8) 3"	(8) 3 1/2"	(8) 4"	(8) 4"	(8) 4"	(8) 3 1/2"	
F4000	500	500	(11) 3"	(11) 3"	(11) 3 1/2"	(11) 4"	(11) 4"	(11) 3 1/2"	

NOTES:  
1. CONDUCTOR SIZES ARE BASED UPON 75°C AMPACITY. NO DERATING AND NO ADJUSTMENTS FOR VOLTAGE DROP. ADJUST AS REQUIRED BY EACH FIELD CONDITION IN ORDER TO COMPLY WITH UL AND NEC.

FOOTBALL LOCKER BUILDING

ODPH DISTRIBUTION PANELBOARD SCHEDULE. LOCATION: MECHANICAL, OB104. SCCR (AMPS RMS SYMM): 65,000. SERVICE: 480Y/277V 3Ø 4-Wire+Ground. MAIN: 1200 A. ENCLASURE: NEMA 1. MOUNTING: FLOOR. Includes a detailed schedule table with columns for NO., DESCRIPTION, NOTE, RATING, POLES, PHASE A, PHASE B, PHASE C, and a summary row for TOTAL CONNECTED LOAD (VA): 769816 VA.

ODPL DISTRIBUTION PANELBOARD SCHEDULE. LOCATION: MECHANICAL, OB104. SCCR (AMPS RMS SYMM): 42,000. SERVICE: 208Y/120V 3Ø 4-Wire+Ground. MAIN: 800 A MCB. ENCLASURE: NEMA 1. MOUNTING: FLOOR. Includes a detailed schedule table with columns for NO., DESCRIPTION, NOTE, RATING, POLES, PHASE A, PHASE B, PHASE C, and a summary row for TOTAL CONNECTED LOAD (VA): 185809 VA.

OH1 PANELBOARD SCHEDULE. LOCATION: MECHANICAL, OB104. SCCR (AMPS RMS SYMM): 42,000. SERVICE: 480Y/277V 3Ø 4-Wire+Ground. AMP: 225 A. MAIN: MLO. NEMA: Type 1. MOUNTING: SURFACE. Includes a detailed schedule table with columns for CKT, DESCRIPTION, NOTE, AMP, POLE, A, B, C, POLE, AMP, NOTE, DESCRIPTION, CKT, and a summary row for TOTAL CONNECTED LOAD (VA): 98932 VA.

OL1 PANELBOARD SCHEDULE. LOCATION: MECHANICAL, OB104. SCCR (AMPS RMS SYMM): 22,000. SERVICE: 208Y/120V 3Ø 4-Wire+Ground. AMP: 225 A. MAIN: MLO. NEMA: Type 1. MOUNTING: SURFACE. Includes a detailed schedule table with columns for CKT, DESCRIPTION, NOTE, AMP, POLE, A, B, C, POLE, AMP, NOTE, DESCRIPTION, CKT, and a summary row for TOTAL CONNECTED LOAD (VA): 35223 VA.

OL2 PANELBOARD SCHEDULE. LOCATION: STORAGE, OB106. SCCR (AMPS RMS SYMM): 22,000. SERVICE: 208Y/120V 3Ø 4-Wire+Ground. AMP: 100 A. MAIN: MCB. NEMA: Type 1. MOUNTING: SURFACE. Includes a detailed schedule table with columns for CKT, DESCRIPTION, NOTE, AMP, POLE, A, B, C, POLE, AMP, NOTE, DESCRIPTION, CKT, and a summary row for TOTAL CONNECTED LOAD (VA): 20016 VA.

OL3 PANELBOARD SCHEDULE. LOCATION: ELEC, OB113. SCCR (AMPS RMS SYMM): 22,000. SERVICE: 208Y/120V 3Ø 4-Wire+Ground. AMP: 225 A. MAIN: MLO. NEMA: Type 1. MOUNTING: SURFACE. Includes a detailed schedule table with columns for CKT, DESCRIPTION, NOTE, AMP, POLE, A, B, C, POLE, AMP, NOTE, DESCRIPTION, CKT, and a summary row for TOTAL CONNECTED LOAD (VA): 45040 VA.

OL4 PANELBOARD SCHEDULE. LOCATION: STORAGE, OB106. SCCR (AMPS RMS SYMM): 22,000. SERVICE: 208Y/120V 3Ø 4-Wire+Ground. AMP: 100 A. MAIN: MLO. NEMA: Type 1. MOUNTING: SURFACE. Includes a detailed schedule table with columns for CKT, DESCRIPTION, NOTE, AMP, POLE, A, B, C, POLE, AMP, NOTE, DESCRIPTION, CKT, and a summary row for TOTAL CONNECTED LOAD (VA): 17250 VA.



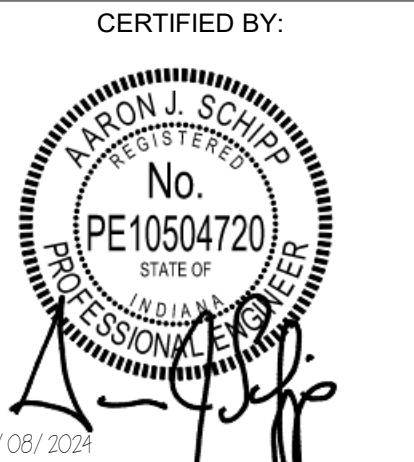
HAMILTON HEIGHTS SCHOOL CORPORATION HAMILTON HEIGHTS HIGH SCHOOL PHASE 2 PROJECTS 25802 IN-19 Site 2, Arcadia, IN 46030

SCOPE DRAWINGS: These drawings indicate the general scope of the project in terms of architectural design content, the arrangement of structural, mechanical and electrical systems.

REVISIONS table with columns for revision number, description, and date.

ISSUE DATE, DRAWN BY, CHECKED BY table.

DRAWING TITLE: SCHEDULES - PANELBOARDS



DRAWING NUMBER: E612

PROJECT NUMBER: 2022060



## **ADDENDUM**

ADDENDUM NO. 04

BID PACKAGE NO. ALL

PROJECT: Hamilton Heights High School – Phase Two Projects

The information contained herein modifies the original Bidding Documents and all prior Addenda as applicable. Requirements of the original Bidding Documents and previous Addenda remain in effect, except as modified by this Addendum.

Bidders must acknowledge receipt of this Addendum on the Bid Form. Failure to acknowledge receipt of this Addendum may subject Bidder to disqualification. This addendum includes:

### **ATTACHMENTS**

1. Final Questions and Clarifications (Not shown on the most recent RFI Log)
2. 01 12 00 – Scopes of Work
  - 2.1 00 42 00b - Contractors Supplemental Bid Form
  - 2.2 01 12 00 - BP02 – Building and Site Concrete
  - 2.3 01 12 00 - BP06 – General Trades
3. N/A

### **PART 1 – GENERAL INFORMATION**

1.1 – Final questions and clarifications

- 1) **Please clarify locations of windows on the (plan) north and (plan) east side of the press box, as it is shown on 2/A2710B.**
  - a. Square windows to be provided, matching the profile of the PTAC units.

### **PART 2 – DIVISIONS 00 & 01**

2.1 – 01 12 00 – Scopes of Work – ADD3

Revisions to scopes of work listed above. Please review if these apply to your specific trade.

2.2 – **PART 3 – DRAWINGS**

3.1 - N/A

**END MEYER NAJEM PORTION ADDENDUM 4**





**THIS MUST BE ATTACHED TO BID FORM 96**

**Hamilton Heights Phase Two Projects**

Date: \_\_\_\_\_

Bidder (Firm): \_\_\_\_\_

Address: \_\_\_\_\_

City/State/ZIP Code: \_\_\_\_\_

Telephone Number: \_\_\_\_\_

Agent of Bidder (if applicable): \_\_\_\_\_

Pursuant to notices given, the undersigned offers to furnish labor and/or material necessary to complete the construction work for:

---

Insert Bid Package Name and Number (also put this on the Bid Envelope Cover)

**NO COMBINATION BIDS WILL BE ACCEPTED**

By submitting this bid, The Bidder acknowledges that The Bidder and all its subcontractors, whatever tier, whose respective contract is equal to or in the excess of \$300,000 shall be qualified by the Indiana Department of Administration at the time of bid submission or is in the process of completing this paperwork with the State of Indiana. Reference Section 00 21 00 Instructions to Bidders, Article 2, Paragraph 2.4.

Bidder acknowledges compliance with Statement above (check box): YES \_\_\_\_\_

By submitting this bid, The Bidder acknowledges their company has instituted and maintains an adequate drug policy that meets the IC 5-16-13 code. Evidence of said policy shall be made available within 24 hours of the bid opening.

Bidder acknowledges compliance with Statement above (check box): YES \_\_\_\_\_

By submitting this bid, The Bidder acknowledges full compliance with the materials and equipment as specified for this project.

Bidder acknowledges compliance with Statement above (check box): YES \_\_\_\_\_

Bidder has included a satisfactory Bid Bond or certified check pursuant to I.C. 36-1-12-4.5, payable to Meyer Najem Construction, LLC. Bid Security shall be in the amount of not less than 5% of the total base bid price. Should a successful Bidder withdraw their Bid, fail to provide the required payment and performance bonds, or execute the contract, the Contractor may then declare the Bid security forfeited as liquidated damages. Bid Bond shall be submitted on AIA Document A310.

Bidder acknowledges compliance with Statement above (check box): YES \_\_\_\_\_

*Bidder has included the cost of a 100% Material Payment and Labor Performance Bond in their Base Bid.*

*Bidder acknowledges compliance with Statement above (check box): YES \_\_\_\_\_*



**BASE BID** for the above-mentioned project - Bids shall be guaranteed for 60 calendar days.

For the sum of \_\_\_\_\_  
(sum in words)  
\_\_\_\_\_ DOLLARS (\$ \_\_\_\_\_)  
(sum in figures)

**ALTERNATE BIDS**

A blank entry or an entry of "No Bid," "N/A," or similar entry on any Alternate will cause the bid to be rejected as non-responsive only if that Alternate is selected and affects the submitted bid category. See specification section 01 23 00 for more detailed descriptions of the alternates.

**MARK "ADD" OR "DEDUCT" FOR EACH ALTERNATIVE**

**Reference Specification Section 01 23 00 – Alternates for a complete description**

**HIGH SCHOOL OFFICE ADDITION**  
**ALTERNATE 1: Building Addition**

Base Bid: No work.

Alternate: Provide all civil, landscape, structural, architectural, mechanical, electrical, plumbing, and technology work associated with east administrative office addition.

Change the Base Bid the sum of \_\_\_\_\_  
(sum in words)  
\_\_\_\_\_ DOLLARS (\$ \_\_\_\_\_) ADD /  
DEDUCT

**ALTERNATE #2: Roofing Membrane**

Base Bid: Fully adhered TPO membrane roof – reference Drawing 1/A121 and Specification 07 54 23.

Alternate: Fully adhered PVC membrane roof – reference Drawing 1/A121 and Specification 07 54 19.

Change the Base Bid the sum of \_\_\_\_\_  
(sum in words)  
\_\_\_\_\_ DOLLARS (\$ \_\_\_\_\_) ADD /  
DEDUCT



**ALTERNATE #3: Cement Stabilization Building Pad**

Base Bid: No work included in base bid.

Alternate: State the costs associated with providing Cement Stabilization of Earthwork for the High School Office Addition Building Pad as indicated on the drawings and specifications and as recommended by the Alt & Witzig Geo-Tech Report. Note the stated Alternate amount will be treated as a Not to Exceed (NTE) Allowance to the awarded contractor's contract. Appropriate paperwork, substantiating costs, shall be provided to Meyer Najem throughout the installation of this scope of work. Failure to do so would void reimbursement for portion of work that is not properly documented.

Change the Base Bid the sum of \_\_\_\_\_  
(sum in words)  
\_\_\_\_\_ DOLLARS (\$ \_\_\_\_\_) ADD / DEDUCT

**AGRICULTURE & OUTBUILDINGS**

(Agriculture Addition Roof 2/A121, Locker Room Building Roof 1/A123OB, Elevator Shaft Roof 2/A123OB, Ticket Booth Roof 3/A123OB)

**ALTERNATE #4: Roof Membrane**

Base Bid: Fully adhered TPO membrane roof – reference Drawing 1/A121 and Specification 07 54 23.

Alternate: Fully adhered PVC membrane roof – reference Drawing 1/A121 and Specification 07 54 19.

Change the Base Bid the sum of \_\_\_\_\_  
(sum in words)  
\_\_\_\_\_ DOLLARS (\$ \_\_\_\_\_) ADD / DEDUCT

**ALTERNATE #5: Cement Stabilization Building Pad**

Base Bid: No work included in base bid.

Alternate: State the costs associated with providing Cement Stabilization of Earthwork for the Agriculture Addition & Outbuildings Building Pads (*Agriculture Addition, Locker Room Building, Elevator Shaft Structure, Ticket Booth Structures*) as indicated on the drawings and specifications and as recommended by the Alt & Witzig Geo-Tech Report. Note the stated Alternate amount will be treated as a Not to Exceed (NTE) Allowance to the awarded contractor's contract. Appropriate paperwork, substantiating costs, shall be provided to Meyer Najem throughout the installation of this scope of work. Failure to do so would void reimbursement for portion of work that is not properly documented.

Change the Base Bid the sum of \_\_\_\_\_  
(sum in words)  
\_\_\_\_\_ DOLLARS (\$ \_\_\_\_\_) ADD / DEDUCT

**ALTERNATE #6: Cement Stabilization Site Pavement Areas**



Base Bid: No work included in base bid.

Alternate: State the costs associated with providing Cement Stabilization of Earthwork for the Agriculture Addition & Outbuildings Site Pavement subgrade – refer to Sheets L101, L102, L103, L104 and L105 as indicated on the drawings and specifications and as recommended by the Alt & Witzig Geo-Tech Report. Note the stated Alternate amount will be treated as a Not to Exceed (NTE) Allowance to the awarded contractor’s contract. Appropriate paperwork, substantiating costs, shall be provided to Meyer Najem throughout the installation of this scope of work. Failure to do so would void reimbursement for portion of work that is not properly documented.

Change the Base Bid the sum of \_\_\_\_\_  
(sum in words)  
\_\_\_\_\_ DOLLARS (\$ \_\_\_\_\_) ADD / DEDUCT

**SITE IMPROVEMENTS**

**ALTERNATE #7: Soccer Field Viewing Mound & Sidewalk**

Base Bid: No work included in base bid.

Alternate: Additional cost to provide soccer viewing berm and concrete pad and walk as incated in L and C series sheets.

Change the Base Bid the sum of \_\_\_\_\_  
(sum in words)  
\_\_\_\_\_ DOLLARS (\$ \_\_\_\_\_) ADD / DEDUCT

**ALTERNATE #8: Soccer Viewing Mound & Sidewalk**

Base Bid: No work included in base bid.

Alternate: State the costs associated with providing Cement Stabilization of Soccer Viewing Mound & Sidewalk subgrade – (refer to L and C series sheets) as recommended by the Alt & Witzig Geo-Tech Report. Note the stated Alternate amount will be treated as a Not to Exceed (NTE) Allowance to the awarded contractor’s contract. Appropriate paperwork, substantiating costs, shall be provided to Meyer Najem throughout the installation of this scope of work. Failure to do so would void reimbursement for portion of work that is not properly documented.

Change the Base Bid the sum of \_\_\_\_\_  
(sum in words)  
\_\_\_\_\_ DOLLARS (\$ \_\_\_\_\_) ADD / DEDUCT

**NEW HIGH SCHOOL CHILLER, PIPING, PUMPS, CONTROLS, ETC.**



**ALTERNATE #9: High School Chiller and Enclosure**

Base Bid: No work included in base bid.

Alternate: State the costs associated with providing new chiller, piping, pumps, controls, etc., and mechanical yard fencing as indicated in drawings.

Change the Base Bid the sum of \_\_\_\_\_  
(sum in words)  
\_\_\_\_\_ DOLLARS (\$ \_\_\_\_\_) ADD / DEDUCT

**ADDENDUM 4 – ADDED ALTERNATE**

**ALTERNATE #10 – (2) Two Year Warranty**

Base Bid: Warranty as listed in the specifications

Alternate: State the cost to be Added to the Base Bid to provide a Two-Year Warranty for all scope within the applicable Bid Packages – inclusive of all Alternates above. This alternate is in lieu of the standard (1) One Year Warranty as described within the Contract Documents.

*Note: Any special or extended warranties listed within specification section greater than one year are still required for the base bid for length indicated in specification section.*

Change the Base Bid the sum of \_\_\_\_\_  
(sum in words)  
\_\_\_\_\_ DOLLARS (\$ \_\_\_\_\_) ADD / DEDUCT

**The undersigned acknowledges receipt of the following Addenda:**

Addenda: Receipt of addenda issued to the contract documents is hereby acknowledged.

Addenda No. \_\_\_\_\_ Dated: \_\_\_\_\_  
Addenda No. \_\_\_\_\_ Dated: \_\_\_\_\_  
Addenda No. \_\_\_\_\_ Dated: \_\_\_\_\_  
Addenda No. \_\_\_\_\_ Dated: \_\_\_\_\_  
Addenda No. \_\_\_\_\_ Dated: \_\_\_\_\_  
Addenda No. \_\_\_\_\_ Dated: \_\_\_\_\_  
Addenda No. \_\_\_\_\_ Dated: \_\_\_\_\_

**UNIT PRICES**

If extra work is necessary as required by the Plans and Specifications, or otherwise, such extra work, at the discretion of the Owner, will be completed according to the written instructions of the Architect and Owner for the following Unit Prices (list N/A if not applicable to your Bid Package) –

NO UNIT PRICES AT THIS TIME

Name of Firm: \_\_\_\_\_

From: \_\_\_\_\_



**BID PACKAGE #02 – BUILDING & SITE CONCRETE**

**Scope Specific Inclusions:**

All work per Specification Sections

00 & 01 Complete	Bidding & General Requirements
Section 03 30 00	Cast-In-Place Concrete— <b>ADD1 – Addendum 3 – Include in scope.</b>
Section 03 30 01	Site Cast-In-Place Concrete
Section 03 35 00	Concrete Surface Treatment - Sealer
Section 03 35 19	Concrete Surface Treatment – Stain
Section 07 92 00	Site Wall Joint Sealants
Section 32 11 33	Granular Base
Section 31 13 16	Concrete Paving

Work Included but not limited to: (Provide all material, labor/installation, and equipment for the following, unless noted otherwise below)

**General**

1. All work/responsibilities as listed in the “General Scope Items - Applies to ALL Bidders” above.
2. Provide all material, labor, equipment, and mobilizations necessary to supply and install the complete Building & Site Concrete scope of work, including all related accessories, as per the documents and the below items, required for this project.
3. Provide all concrete other than as described in the specific exclusions below.
4. Refer to all drawing sheets for abbreviations and symbols, general notes, schedules that pertain to this scope (specifically, the civil, structural, and architectural drawings).
5. Provide all excavation as required for this scope of work (foundations and curbs **and thickened slabs**). – **Addendum 3**
6. Review and abide by all recommendations in the Geotechnical Report provided by Alt & Witzig Engineering, Inc. Refer to Section 00 80 00 Geotechnical Report in the Project Manual.
  - i. Remediation for unsuitable soils will be determined at time of construction. Coordinate with Alt & Witzig recommendations in Geotechnical Reports.
7. Provide backfill for this scope of work. Backfill all curbs, walks, interior and exterior side of foundations, interior and exterior side of curb islands, etc. Include backfilling of any below-grade CMU. Coordinate backfilling activities with the site superintendent.
8. Include haul off/disposal of all spoils created from this scope of work. All excess or unused materials to be hauled off site and disposed of legally.
9. Provide all site dewatering for work within this bid package to not delay the construction schedule.
10. Provide winter conditions if required. Refer the Construction Schedule in the Project Manual.
11. Include labor and equipment to unload and install all reinforcing materials (rebar, wire mesh, fiber, etc.) and accessories. Accessories include but are not limited to: rebar supports, chairs/bricks for setting and rebar accessories, caps, etc., per specification sections.
12. Provide all forming and placement methods (pumping etc.) as required per the contract documents.
13. Provide all layout for this scope of work. Reference Field Engineering spec in the Project Manual.
14. ~~Concrete washout area to be provided by bid package 1. Coordinate service requirements with corresponding contractor.~~ – **Addendum 3**
15. This scope shall be responsible for cleanliness of treads and tires on equipment prior to moving across roadways. Include cleaning of adjacent streets/drives from dirt during the concrete operations.

16. Provide all architectural finishes of concrete including rubbing, smooth forms, colored concrete, or other finishes as defined by the documents.
17. Provide all concrete per the contract documents. Include specified mix designs, expansion joints, control joints, curing materials, hardener/sealers, etc. for a complete installation.
18. Provide and install all stone required or shown under/at concrete locations.
19. Include material and installation of all expansion material which abuts concrete provided by this scope of work.
20. Provide installation of embedded items, provided by others (ex. embeds, sleeves, angles, etc.).

### **Building Concrete**

21. Provide all building concrete including but not limited to: foundations, piers, slabs on grade, elevated slabs, stair pans, walls, thickened slabs, footings, stoops, diamond infills, etc.
  - i. Equipment pads are by others.
22. It is this trade's responsibility to determine if footings need to be formed. No cost adjustments will be provided for forming of footings for any reason.
23. Coordinate with the Fire Protection, Mechanical, Electrical, Plumbing (FMEP) trades installing under-slab MEP.
24. This Bid Package is to provide an anchor bolt survey. ~~BP05 Steel will set the anchor bolt elevations.~~ – **Addendum 3**
25. Include setting of all steel column anchor bolts in concrete at structural steel column locations shown per structural plans. Anchor bolts will be provided by BP05 – Steel.
26. Refer to structural drawings for anchor bolt sizing and quantities.
27. Set all vertical, reinforcing for piers as required.
28. Providing grouting of all base plates.
29. Provide and install all required free-draining granular base for the building slab, per notes on documents.
30. Provide and install vapor barrier under building slab.
31. Provide and install foundation insulation under building slab **and vertically as shown in the drawings.** – **Addendum 3**
32. Provide and install all required control joints and diamonds at columns in slabs on grade, per drawings and details.
33. Provide recessed concrete at locations indicated on the drawings (reference finish plans).
34. Cutting and patching of existing concrete slabs for MEP work is by the MEP trades.
35. Provide touch-up grading of building pad prior to placement of stone subbase.

### **Site Concrete**

36. Provide all site concrete including but not limited to: ramps, walks, curbs, pavement, integral walks and curbs, exterior equipment pads, dumpster pads, ~~truck dock retaining walls etc.~~ – **Addendum 3**
37. Refer to architectural civil, and landscaping drawings for locations and details pertaining to site concrete.
38. Provide and install all required ADA ramps/walks where concrete walks transition to road ways or parking lots. Truncated domes to be provided and installed per the local jurisdiction's requirements.
39. Provide and install all required site concrete paving.
40. Saw cut all control joints at concrete pavement, curbs and sidewalks as required.
41. Layout, set, and fill concrete pipe bollards. Steel bollards provided by BP05.
42. Provide installation and removal of the temporary sidewalks noted on the CM drawings.



**Addendum 2 – 02/28/2024**

---

**Site Concrete**

- 43. It is the responsibility of this bid package to include all of the following site concrete items, as they are shown on the “L” Series Drawings.
  - i. Curbs: C1 – C4
  - ii. Concrete Pavement: P1 – P2
- 44. Ramps: R1-R4, as shown in the site plans, and as detailed on L602
- 45. Contractor to provide assemblies per the site details listed on L600.
- 46. Contractor to include curb shown at existing baseball field, as detailed on 5/L601
- 47. Include retaining walls as detailed on 2/L601
- 48. Contractor to include E5 Internal Cure and E5 Catalyst at all walks and curbs.

**Building Concrete**

- 49. Include elevated benches called out on A251OB with plan note 3.
- 50. Include isolated thickened slab under washer and dryer, as noted by plan note 5 on A251OB.
- 51. Contractor to include E5 Internal Cure and E5 Catalyst at all slabs.

**Addendum 3 – 03/05/2024**

---

**Additional Specification Sections:**

Section 03 35 00	Concrete Surface Treatment — Sealer - Addendum 4
Section 03 35 19	Concrete Surface Treatment — Stain- Addendum 4

- 52. Include a performance and payment bond.
- 53. It is the responsibility of this bid package to provide concrete washout dumpster/ area.
- 54. Contractor to include work shown at the monument sign, along SR 19.
- 55. Provide and install relocated transformer pad.

**Addendum 4 – 03/07/2024**

---

- 56. Sections 03 35 00 and 03 35 19 that were added in Addendum 3, have been re- allocated to bid package 06 – General Trades.

**Work Excluded:**

- 1. Rough Grade of Building Pad
- 2. Concrete Testing
- 3. Asphalt
- 4. Parking Signage
- 5. Curb Stops
- 6. MEP Equipment Pads
- 7. Site Lighting Pole Bases
- 8. Joint Sealants
- 9. MEP Cut and Patch of Existing Concrete
- 10. Equipment pads, light pole foundations, bleacher foundations
- 11. Fence Post Foundations – Will be provided by 01 – Sitework – ADD2
- 12. 4/L601 – to be provided by 01 – Sitework – ADD2

**END OF BID PACKAGE #02 – BUILDING & SITE CONCRETE**

**BID PACKAGE #06 – GENERAL TRADES**

**Scope Specific Inclusions:**

All work per Specification Sections

00 & 01 Complete	Bidding & General Requirements	Section 09 67 00	Fluid-Applied Flooring
Section 03 35 00	Concrete Surface Treatment - Sealer <b>Addendum 3</b> <b>Addendum 4</b>	Section 09 68 13	Tile Carpeting
Section 03 35 19	Concrete Surface Treatment – Stain <b>Addendum 3</b> <b>Addendum 4</b>	Section 09 72 00	Wall Covering
Section 06 10 53	Wood Blocking	Section 09 91 23	Interior Painting
Section 06 16 00	Wood Wall Sheathing	Section 09 96 00	High-Performance Coatings
Section 07 21 00	Thermal Insulation	Section 10 11 00	Visual Display Units
<del>Section 07 21 19</del>	<del>Spray Foam Insulation</del> <b>Addendum 3</b>	Section 10 14 16	Plaques
Section 07 84 13	Penetration Firestopping	Section 10 14 19	Dimensional Letter Signage
Section 07 84 46	Fire-Resistive Joint Systems	Section 10 14 23	Panel Signage
Section 07 92 00	Joint Sealants	Section 10 21 13	Toilet Compartments
Section 07 95 00	Expansion Control	Section 10 26 00	Wall and Door Protection - Corner Guards
Section 08 11 13	Hollow Metal Doors and Frames	Section 10 28 00	Toilet, Bath, and Laundry Accessories
Section 08 14 19	Flush Wood Doors	Section 10 43 13	Defibrillator Cabinets
Section 08 31 13	Access Doors and Frames	Section 10 44 13	Fire Extinguishers and Cabinets
Section 08 33 13	Coiling Counter Doors	Section 10 50 00	High Density Athletic Storage
Section 08 33 23	Overhead Coiling Doors	Section 10 51 13	Metal Lockers
Section 08 41 13	Aluminum-framed Entrances and Storefronts	Section 11 23 00	Laundry Equipment
Section 08 71 00	Door Hardware	Section 11 31 00	Residential Appliances
Section 08 80 00	Glazing	Section 11 52 13	Projection Screens
Section 08 87 00	Glazing Film	Section 12 24 13	Roller Window Shades
Section 08 91 19	Fixed Louvers	Section 12 32 16	Manufactured Plastic-Laminate-Faced Casework
Section 09 30 00	Tiling	Section 12 36 13	Epoxy Resin Tops
<del>Section 09 51 13</del>	<del>Acoustical Panel Ceilings</del> <b>ADD2</b>	Section 12 36 16	Metal Countertops
Section 09 65 13	Resilient Base and Accessories	Section 12 36 63	Solid Surface Countertops
Section 09 66 23	Resinous Matrix Terrazzo Flooring	Section 14 24 00	Hydraulic Elevators

Work Included but not limited to: (Provide all material, labor/installation, and equipment for the following, unless noted otherwise below)

**General**

Addendum 2 – 02/28/2024  
 Addendum 3 – 03/05/2024

1. Include a Payment and Performance Bond in the proposal for this scope of work.
2. All work/responsibilities as listed in the "General Scope Items - Applies to All Bidders" above.
3. This Contractor shall be responsible for including an onsite General Superintendent for supervision and coordination, at all instances where either self-perform or subcontract work that is under this Bid Package's scope of work is present on site. This includes receiving and unloading materials.

#### **Temporary Work**

4. Provide the following. Reference the CM drawings and phasing.
  - i. Provide temporary enclosures at all window locations.
  - ii. Provide temporary enclosures at all bump-out window locations. Reference Detail A on CM-09.
  - iii. Provide leading edge protection of all existing conditions being re-worked (perimeter safety rails at roof, second floor, floor openings, controlled access zones, etc.).
  - iv. Provide temporary toilets/ Port-O-Lets
  - v. Provide all mowing, trimming, weeding, etc. within construction fence areas for the duration of the project.
  - vi. Provide and maintain all dumpsters and recycling containers throughout the entire project **for all trades. – Addendum 3**
  - vii. Provide temporary stairs, guardrails, walkways to accommodate ALL construction activities (activities for all Bid Packages).
  - viii. Provide, maintain and locate fire extinguishers per OSHA.

#### **Selective Demolition**

5. Provide all selective building demolition per the Architectural Demolition drawings and specs.
  - i. Provide all interior demolition as required to accept new work including, but not limited to, walls/partitions, soffits, bulkheads, ceilings, doors & frames, casework, windows, floors, flooring, wall base etc.
  - ii. Demolition by others:
    - i. Site Demolition - BP01 - Sitework
    - ii. Roof Gutters – BO-07 - Roofing
    - iii. Structure Demolition – BP01 - Sitework
  - iii. The MEP trades will make safe, cut, cap, and dispose of all MEP demolition items.
  - iv. The MEP trades are cutting and patching concrete as needed for their MEP work.
  - v. Provide Demolition Plan Note 6 on the Site Demolition Plans.
6. Include all notifications, wrecking/demo permits as required.
7. Coordinate with Meyer Najem and Hamilton Heights Schools for existing utility service disconnects as required.
8. All demolition items/debris to be removed from site unless noted otherwise. Dispose of legally.
9. Coordinate demolition sequence with the Meyer Najem superintendent and other trades as required. (Reference CM drawings for phasing)
10. Means and methods to protect existing conditions to remain from demolition activities as necessary.
11. Provide and manage dumpsters for all demolition debris.
12. Provide means and methods to remove all demolition debris out of building. Include floor protection, continual dust removal and mopping, dust abatement, etc.
13. Refer to the Architectural and Mechanical demolition plans. Provide all interior selective demolition as required for installation of new MEP systems. General Trades contractor to consult with BP-09 **Metal Studs, Drywall, and Ceilings** to ensure a seamless reinstallation of all metal studs, drywall, and ceilings. – **Addendum 3**
14. ~~Contractor to provide all concrete and flooring demolition as required for MEP systems. See "Flooring" section for more information. – Addendum 3~~

#### **Rough Carpentry**

15. Provide all in- wall blocking for interior wall- mounted fixtures, to be installed by this scope of work.

16. Provide all exterior blocking as shown in the drawings. Include in all locations, whether shown or implied, for elements including but not limited to; exterior metal panels, roofing components, MEP items, etc.
17. Include all interior and exterior plywood sheathing as it is shown on the drawings and implied in the specifications.
18. ~~Provide~~ – **Addendum 3**

### **Casework**

19. All fasteners, adhesives, sealants, fillers for materials provided by this scope of work.
20. All out of wall blocking as required for installation of materials provided by this scope of work.
21. Field measuring prior to fabrication.
22. All materials installed by this scope of work are to be installed level and plumb.
23. The scope is responsible for all tack boards that are within or adjacent to casework installations.
24. Provide templates for all work in which coordination between other trades is necessary to incorporate MEP systems, accessories, equipment etc. into the materials provided by this scope of work. Including but not limited to Casework islands, information desks, reception desks and other similar casework fabrications.
25. All cut outs for sinks and faucets where required. Coordinate sizes with plumbing specifications/trade.
26. Include finished sides and back of all casework/millwork where exposed.
27. Reference all specifications, finish plans, finish legends etc. for material finish requirements.
28. Finish Carpentry including but not limited to: wood trim, paneling, casings, molding, chair rail, base, handrails, sills etc.
29. All wood finish carpentry items installed shall be prefinished (stained or painted per finish requirements). Putty and touch up all fastener holes after installation.
30. All casework fabrications including but not limited to: wall & base cabinets, countertops, fixed and operable shelving, open wall cabinets, soffits, mail slots, valances, swing gates, toe kicks, splashes, transaction tops, wall caps, bathroom vanity and below counter guards, coat rods and shelves, etc.
31. Includes in- wall metal countertop supports as shown in the drawings. Please coordinate installation with metal stud and drywall contractor.
32. This scope of work is responsible for glass that is integral to any door, drawer etc. relating to their work.
33. Provide and install all supplemental framing required for installations such as receptions desks and other similar conditions for a complete finished system.
34. Include all hardware as for materials provided by this scope of work including but not limited to hinges, pulls, guides/slides, stops, locks (include all keying and cylinders as specified), grommets, trays, shelves, adjustable shelf supports, hanger rods, hooks (if located on or within casework), clips, bumpers, countertop supports/brackets, standoffs, etc. for a complete installation of materials provided by this scope.
35. Filler pieces and reveals for materials provided by this scope.
36. Include all edge profiles and seaming material for each type of countertop provided by this scope work.
37. Solid surface fabrications including but not limited to: countertops, splashes, worktops, sills, transaction tops, wall cap/tops, etc.
38. Include integral solid surface sinks (plumbing fixtures, connections by plumbing contractor)
39. Include all supports and brackets as required.
40. Include all resinous tops as shown in the drawings.

### **Sprayed Insulation**

41. ~~Provide per the drawings and the specs. Provide protection of adjacent surroundings to prevent overspray. Provide cleaning of overspray and material that falls to the floor.~~ – **Addendum 3**

### **Firestopping**

42. Provide firestopping in new and existing walls per the drawings and specifications. Reference the Life Safety Plan, Floor Plans, Wall Partition Types, and Wall Sections/Detail sheets for details.

43. Provide Firestopping at all top of walls, bottom of walls, and slab edges, if required. Fire Suppression, Mechanical, Electrical, and Plumbing (FMPE) penetrations in new and existing walls will be by the FMPE Bid Packages.
44. Provide fire resistive joint systems equal to the wall rating at all wall head/floor intersections with rated assemblies.

### **Caulking**

45. Provide all caulking per the drawings and specs except as excluded below.
46. Provide caulking of exterior flatwork, concrete to building, expansion joints in concrete, bollard base perimeters, etc.
47. Provide caulking of interior and exterior masonry control joints.
48. Provide caulking where dissimilar materials meet, including but not limited to EIFS, masonry, soffit perimeters, etc. Exterior caulking around window perimeters is by Bid Package 14 Glazing.
49. Provide slab on grade isolation joint detail sealant, if required.
50. Provide caulking of interior perimeters of exterior aluminum entrances and storefront. Exterior perimeter by Bid Package 14 Glazing). Provide caulking of interior **and exterior of storefront.** - **Addendum 3**
51. Provide caulking of plumbing fixtures to walls and floors.
52. Provide caulking of fixed casework and countertops to wall surface.
53. Provide backer rod where required.

### **Doors, Frames, and Hardware**

54. Provide and install all doors, frames, and hardware for the project except as excluded below.
55. Review Section 01 73 30 Electronic Door Hardware Coordination. Provide and install that which is called out in this specification and shown in the drawings. LV wiring to be performed by ~~BP-18~~ **BP-13 - Electrical. Addendum 3**
56. Provide and install door vision kits.
57. Provide and install glass for vision kits as listed below in "Glass and Glazing"
58. Provide fire and smoke ratings of doors, frames, and hardware per the Fire/Smoke Ratings denoted by the Wall types, the Floor Plans, and the Life Safety Plans. The most stringent shall govern.
59. Provide unloading, staging, and installation of the delivered doors and hardware provided by this scope of work.
60. Delivery of materials provided by this scope to the job site shall be in accordance with the Construction Schedule and phasing requirements (reference CM Drawings) as determined by the Site Superintendent or Project Manager. Materials delivered shall be palletized or grouped in logical order for the installation/sorting sequence and all items are to be clearly labeled by opening number.
61. Provide all keys, cylinders, and cores for project. Provide keying requirements as listed in specifications. This includes temporary construction keying/cores for the project.
62. Supplier shall meet in person with owner/architect and contractor to finalize keying requirements prior to the locks and exit devices being ordered and match existing or start a new Restricted and Patented Master Key System for the project. During keying meeting, all hardware functions should be reviewed with the owner/architect/contractor to finalize lock and exit device functions.
63. Contractor to install all access panels, provided by the fire suppression, mechanical/ plumbing, and electrical/ av contractors. ~~Bid package 09~~ - **Addendum 3**

### **Rolling Service Doors/ Overhead Doors**

64. Provide all overhead doors, insulated and non-insulated per the drawings and specifications. Provide any hoisting/lifts required for installation.
65. Provide door and operating equipment with necessary hardware, anchors, inserts, hangers and supports. Follow manufacturer's installation instructions.
66. Provide low voltage wiring up to the line voltage junction box. Line voltage connection will be provided by the Electrical Contractor.
67. Provide operation training and demonstration for the Owner.

**Glass and Glazing**

68. All glass and glazing for the project complete. Includes all exterior and interior glazing for complete project. Including but not limited to the scope listed below.
69. Exterior storefront and curtain wall systems complete. Includes all framing, flashings, pans, sills, glazing, fasteners, spandrel insulation, metal panels contained within aluminum framing, accessories, etc. for a complete glazed system. Reference wall sections and details for additional information.
70. Flashings (jambs, sills of openings provided by this trade), sealing, etc. of all aluminum frame systems- Coordinate with all exterior façade trades for integrated connections between different products.
71. Provide all interior storefront glazing systems. Include all framing, glazing, fasteners etc. for a complete system.
72. All exterior caulking between your scope and dissimilar items and any caulking required to make the building weathertight (associated with, or in contact with, this scope). Include any caulking or sealants that come into contact with your scope of work. Interior finish caulking between your scope and dissimilar materials is by others.
73. Glazing gaskets should be tight fitting and waive free.
74. Glazing within wood, hollow metal doors and frames, including fire rated glass in doors as required for the life safety plan.
75. **Provide and install** all hardware installation for aluminum doors. Coordinate requirements with door hardware supplier. - **Addendum 3**
76. Includes all aluminum trim surrounding all exterior storefront and curtain wall per the details shown for weathertight condition. Color to match curtain wall. Coordinate installation etc. with air barrier application to ensure a weather tight building. Air barrier to be provided and installed by others.
77. Include insulation within aluminum framing systems. Includes mineral wool in misc. voids, **rigid insulation @ spandrel panels**, and when shown against flashing or trim within glazing system provided and installed by this trade. (does not include cavity insulation between masonry and metal stud locations, etc. or any insulation outside of aluminum framing system/perimeter) - **Addendum 3**
78. Include all shims, supporting components, and miscellaneous support angles for installation purposes or as required.
79. Ensure glass provided and installed by this scope of work is free from factory/shop applied stickers and adhesive that are not required to remain post installation.
80. Contractor to provide packing mineral wool insulation/ spray foam insulation at the perimeter of thermal frames.
81. Frames to be finished per 08 41 00. Final frame color selection occurs at submittal phase. Custom color is included in the contract amount.
82. Includes labor for water test after aluminum systems are installed and flashed correctly to check for water penetration per the specifications.
83. It is the responsibility of this bid package to provide and install all fixed louvers as shown or implied in the construction documents. **In the event they are attached to ductwork, it is the responsibility of BP12 Plumbing and HVAC to supply and install louvers in these locations.** **Addendum 3**

**Flooring/ Tiling**

84. Furnish and install all tile, resilient tile flooring, tile carpeting, tile and vinyl base IAW the drawings, specifications room finish plan and schedule. Include all products (tile backer board by others), materials, trim and accessories listed in the specifications for a complete installation.
85. Source all items through an approved manufacturer.
86. Provide and install hydraulic cement underlayment for locations ~~indicated on the plans~~ **needing sloped or leveled.** **Addendum 3**
87. Conduct minor floor preparation to accept new finishes. This includes control joints, minor concrete depressions, and other small impurities in the sub- surface.
88. All floor areas shall be cleaned and swept free of debris prior to installation of flooring.
89. Float floor at material transitions for a smooth finish.

90. All cuts, trims, outlets, and fixtures should be tight and smooth so that cover plates, trims or escutcheons will cover completely.
91. Grout joints shall be free of voids and have a smooth finish. Remove all haze and debris once grouting has been completed. Properly dispose of grout water.
92. Clean and protect ~~IAW~~ in accordance with the specifications. - **Addendum 3**
93. This scope of work incorporates flooring/wall material patterns/directions as required by the contract documents.
94. All products will be warranted ~~IAW~~ in accordance with the specifications. - **Addendum 3**
95. This project is utilizing E5 concrete slab treatment. Additional information can be found at [www.specificationproducts.com](http://www.specificationproducts.com). All warranties and guarantees shall be maintained.
96. Provide and install Terrazzo demolition and patching as required for MEP system modifications. Reference demolition and architectural finish drawings for more details.
97. Contractor to provide and install all resinous flooring as it is indicated in the construction documents.

### **Painting & Wall Covering**

98. Provide all exterior painting, interior painting, and wall coverings for the entire project per the drawings and specifications.
99. Reference general notes on the drawings that refer to this scope of work.
100. Provide prime and finish coats per contract documents.
101. This scope of work shall include a final touch up coat as needed prior to project completion.
102. Provide exterior painting of all unfinished materials including but not limited to:
  - i. Exposed steel (rails, lintels, gates, ladders, bollards, posts, roof screen supports, hollow metal frames and doors, etc.)
  - ii. CMU/Masonry materials scheduled to be painted, etc.
103. Provide interior painting of all unfinished materials including but not limited to:
  - i. Exposed steel (deck, columns, beams, tubes, rails, joists, bollards, gats, posts, etc.).
    - i. Coordinate painting of exposed structure with Construction Manager and other trades prior to painting exposed structure.
  - ii. Gypsum surfaces: walls, ceilings, soffits, bulkheads, etc.
  - iii. Hollow metal doors & frames
  - iv. Masonry materials scheduled to be painted.
104. Do not paint over required labels.
105. ~~Stain or paint all unfinished wood doors.~~ - **Addendum 3**
106. Stain or paint all unfinished finish carpentry. Patch all fastener marks/holes prior to painting.
107. After prime coat has been applied, this scope of work and drywall trade shall review drywall surfaces to determine acceptance. Any inconsistencies shall be addressed prior to final paint.
108. Wallcovering where indicated is the responsibility of this scope of work.
109. Review substrate prior to application of wall covering. Any inconsistencies shall be brought to the attention of the site superintendent and drywall trade prior to installation of wall covering.
110. ~~Provide sealing of Concrete as indicated by contract documents.~~ - **Addendum 3**

### **Specialties**

111. Provide and install the following per the documents. Provide complete with all accessories for a complete installation. Provide in- wall blocking as applicable.
  - i. Visual Display Boards
  - ii. Cast Plaques
  - iii. Dimensional Letters & Signage
  - iv. Panel Signage
  - v. Toilet Partitions & Doors
  - vi. Cubicle Track and Hospital Cubicles
    - i. Provide supports per the documents.
  - vii. Wall Guards
  - viii. FRP Paneling
  - ix. Toilet Accessories
  - x. Shower Seat

- xi. Polycarbonate Plastic Coat Hooks
- xii. Key Cabinet
- xiii. Defibrillator Cabinets
- xiv. Recessed AV Cabinet
- xv. Fire Extinguishers & Cabinets
- xvi. High density athletic storage units – Provide and install components for a complete system.
- xvii. Metal lockers

### **Equipment**

- 112. Provide and install all laundry equipment/ appliances as they are shown in the drawings.
- 113. Include all food service equipment as is shown in the documents.
- 114. All electrical requirements and final connections, relating to food service and laundry equipment are to be coordinated with the electrical bid package.

### **Furnishings**

- 115. Provide the following per the documents. Provide all accessories for a complete installation. Provide field measurements as required.
  - i. Blinds

### **Elevators**

- 116. It is the responsibility of this bid package to provide and install the hydraulic elevator, shown at the new football grandstands.
  - i. Contractor to coordinate with MNC, as well as all corresponding trades to ensure
    - i. All power requirements are met
    - ii. All shaft clearances are correct
    - iii. Pit depths are achieved
    - iv. Sufficient mechanical room/ chase space is provided.

## **Addendum 2 – 02/28/2024**

---

### **Selective Demolition**

- 117. Contractor to include selective demolition per demo notes 2, 4, 5, 6, 7, 9, 11, 12, 14, 17, 18, 20, and 23 in the “AD” Series Drawings.

### **Expansion Joints**

- 118. Furnish and install all structural expansion joints, not included within roofing systems including but not limited to:
  - i. 07 95 00 A and B, called out on A181. Roof expansion joints by BP07.
  - ii. Note 6/A201
  - iii. Note 7/A201
  - iv. Note 12/A201
  - v. Note 10/A211
  - vi. Note 12/A201
  - vii. Note 7/A201
  - viii. Note 6/A201

### **Signage**

- 119. Furnish and install all interior signage per elevation notes 14,17, and 25-29 on A350OB.
- 120. All signage as shown on A960 **with the exception of the digital signage, which will be provided and installed by BO13 – Electrical and Low Voltage - Addendum 3**
- 121. Notes 17, 25, 26, 27, and 28. 29 to be furnished and installed by BP13



**Addendum 3 – 03/05/2024**

---

**Additional Specification Sections:**

Section 02 41 19	Selective Demolition
Section 12 93 02	Netted Backstops

122. Include all new countertops as they are shown in the drawings.

**Addendum 4 – 03/07/2024**

---

123. Sections 03 35 00 and 03 35 19 that were removed in Addendum 3, have been re- allocated to this bid package.

---

**Work Excluded:**

1. Site Demolition
2. MEP selective demolition and disposal
3. Asbestos, hazardous material removal and abatement
4. ~~Exterior perimeter caulking of Storefront-ADD2~~
5. ~~Structure demolition-ADD2~~
6. ~~Pipe and tube railings to be provided and installed by BP-05-Steel-ADD2~~
7. Acoustical caulking at top and bottom of MSDW assemblies

**END OF BID PACKAGE 06 - GENERAL TRADES**