

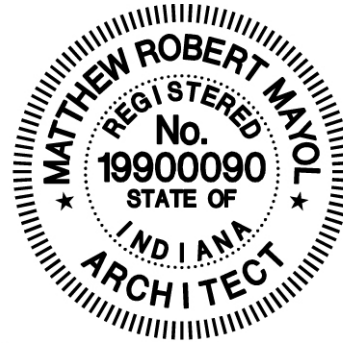
ADDENDUM NO. 2

ALBANY ELEMENTARY
BUILDING ADDITION & RENOVATION PROJECT
700 W. STATE ST.
ALBANY, IN 47320

OMS PROJECT NO. 22063

MARCH 25, 2023

ODLE McGUIRE SHOOK
7222 N. SHADELAND AVE., SUITE 100
INDIANAPOLIS, INDIANA 46250



Matthew R. Mayol

Matthew R. Mayol, IN AR1900090

TO: BIDDERS OF RECORD

This Addendum changes and modifies the Bidding Documents dated February 26, 2024 and will become a part of the Contract Documents.

Acknowledge receipt of this Addendum in the space provided on the Bid Form. Failure to do so may subject the Bidder to disqualification.

This Addendum consists of: Pages ADD.1-1 through ADD.1-7

GENERAL

1. Bidder questions as follows:
 - a. Q: What is the Brand of the Fire Alarm System that is currently installed and what make/model is the Fire alarm Control Panel?
A: E-Solutions is responsible for the Fire Alarm system contact is Aaron Brunsman, Project Manager aaron.brunsmann@e-solutions-inc.com Tel: (317) 400-5187 www.esolutionsinc.com.
 - b. Q: Are there operable windows in the W1? A201 / 5 shows a hinge on (2) of the windows?
A: All windows are fixed.
 - c. Q: Regarding frames W1, W2, W4, and W5: I don't see where W4 or W5 are used. Please confirm no scope at these windows?
A: Disregard W4 and W5.
 - d. Q: The elevation drawings and detail pictures resemble preglazed windows, however, the detail callouts (084100.A1) call for storefront, and there is only a storefront spec (not windows). Please confirm W# elevations are intended to be fixed storefront framing per spec section 084100.
A: Correct Storefront.
 - e. Q: In lieu of all hydronic piping being installed using schedule 40 black steel pipe, with threaded fittings, as per the mechanical piping schedule on plan page M100. Could we use type "L" copper tube with wrought copper solder fittings or copper mechanical press

joint fittings for pipe sizes 2" and under, and use schedule 40 steel pipe with steel grooved fitting similar to "Gruvlok/Victaulic" for piping 2-1/2" and larger?

A: Yes, type "L" Copper tube with wrought copper solder fittings are acceptable for pipe sizes 2" and under. Also, grooved piping on the chilled water lines is acceptable so long as it is not Victaulic. Gruvlok fittings would be acceptable.

f. Q: Phase 1 is to begin in April. Will we be able to start our structural demo of the entire administration area in April? Or, will we need to wait until the end of the school year in late May?

A: Yes, correct, April. The Owner is prepared and ready to move out of the Admin.

g. Q: Should we figure EMT per the specifications, or conduit per the drawings?

A: Use EMT per the specifications. Disregard the Note 17 on E100: about metal clad cable that contradicts the Project Manual.

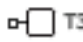
CHANGES TO SPECIFICATIONS:

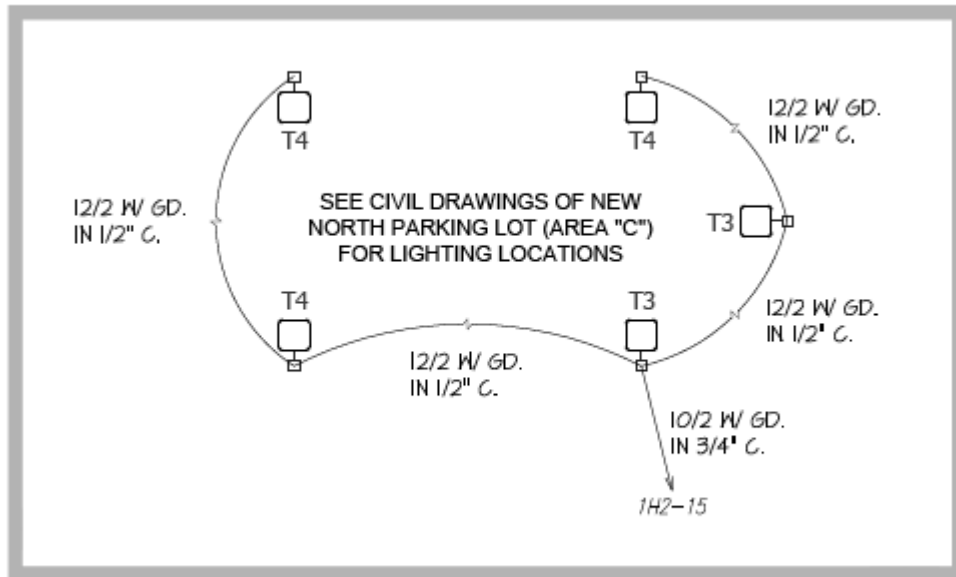
1. None.

CHANGES TO DRAWINGS:

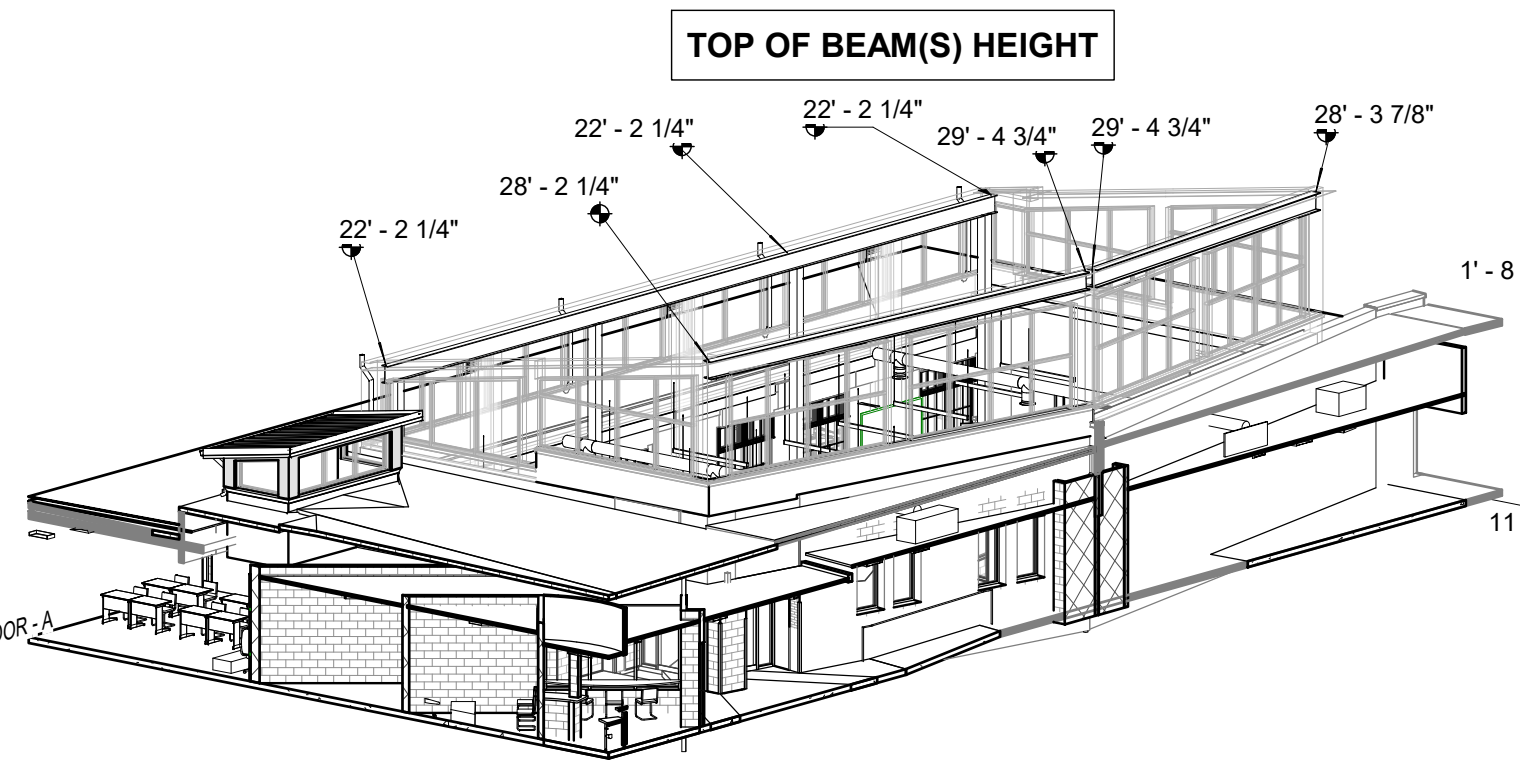
1. Drawing A107 CLERESTORY PLAN & ELEVATIONS
 - A. Revise Details 2, 3, 4, 5, 6, 7, 8 and 9 as follows:
 - a. Delete all references to 074213.A1 Aluminum Composite Panels. The basis of design is to Provide 072423.C3 2" Exterior Insulation and Finish System at the Clerestory exterior walls. The ACM Panels are only provided at the Administration and Main Entry elevations due to cost limitations.
 - b. NOTE: Provide the roof membrane and coverboard below the Clerestory windows at areas receiving new roof. Also, it can be a Contactor's Option or a Voluntary Alternate to install EIFS below the storefront windows in lieu of turning up the roof membrane since either option will be watertight and will be visually acceptable.
2. Drawing A311 WALL SECTIONS
 - A. Detail 4 revise Keynote to 072423.C3 2" Exterior Insulation and Finish System in lieu of 074213.A1 Aluminum Composite Panel.
3. Drawing A501 OPENING SCHEDULES & DETAILS
 - B. Detail S4 Revise Keynote to 072423.C3 2" Exterior Insulation and Finish System in lieu of 074120.A1 2" Insulated Metal Wall Panel.
4. Drawing A502 OPENING DETAILS & ELEVATIONS
 - C. Details H5 & J6 revise Keynote in to 072423.C3 2" Exterior Insulation and Finish System in lieu of 074120.A1 2" Insulated Metal Wall Panel.
5. Drawing E102 ELECTRICAL LIGHTING PLAN AREA C

Please disregard the T3 Fixture and the T4 pole light in the drawing as it belongs to a previously bid New North Parking Lot project and is not included in this project scope of work.

| | | | | | |
|--|------------|---------------------|-------------------------------|-----------------|------------------|
|  T3 | POLE LIGHT | CREE HTA-A-HH-T3 | REFER TO CIVIL LIGHTING PLANS | 19,200 4000K | LED-130W 277V |
|--|------------|---------------------|-------------------------------|-----------------|------------------|



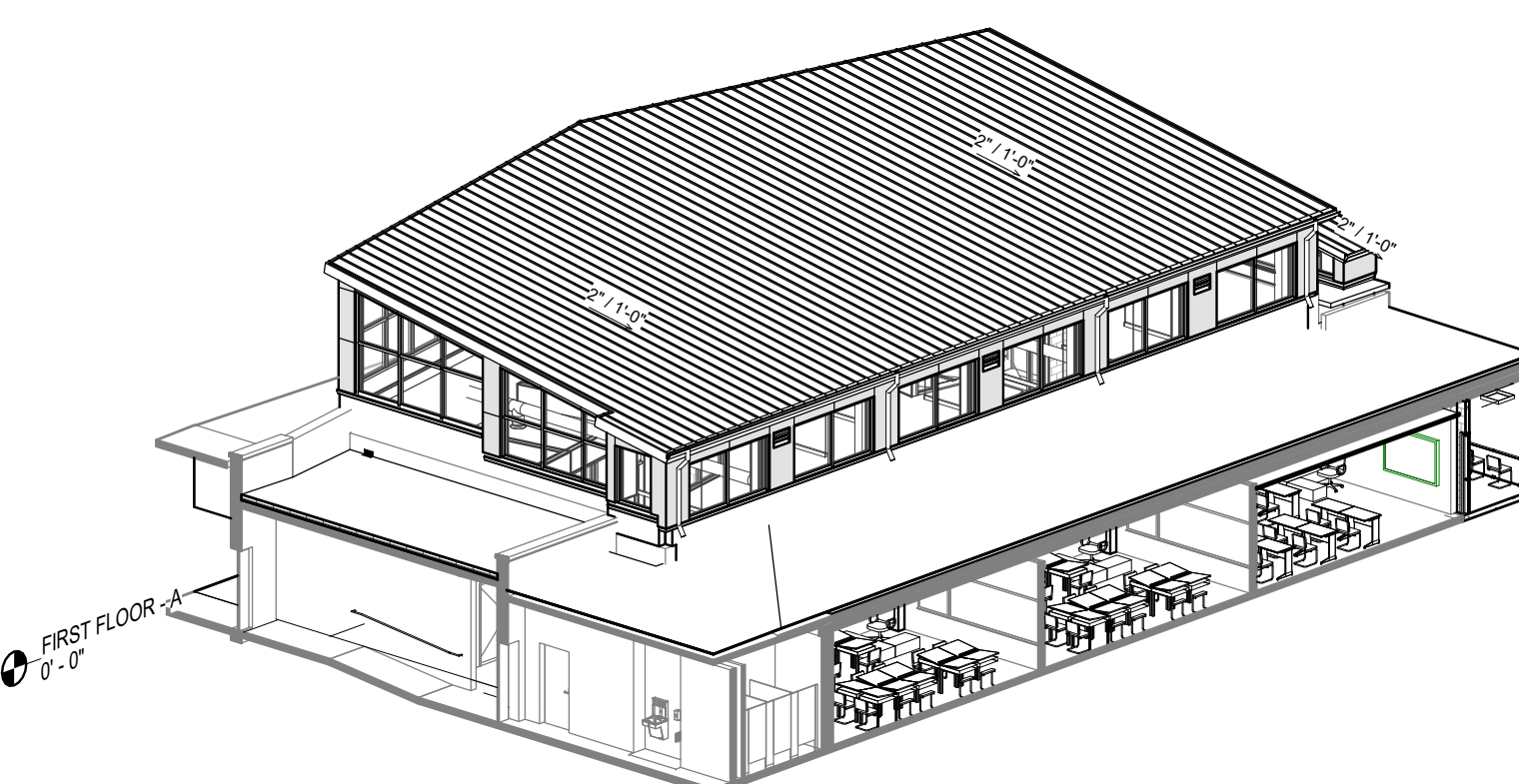
END OF ADDENDUM NO. 2



JOIST BEARING PERSPECTIVE

SCALE:

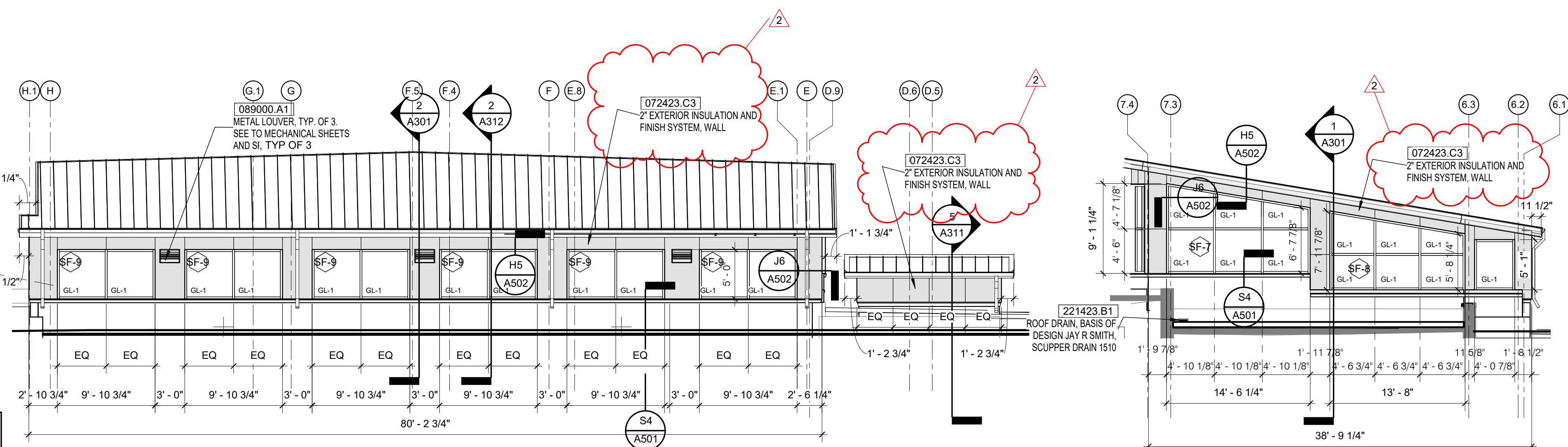
11



NW CLERESTORY PERSPECTIVE

SCALE:

10



CLERESTORY WEST ELEVATION

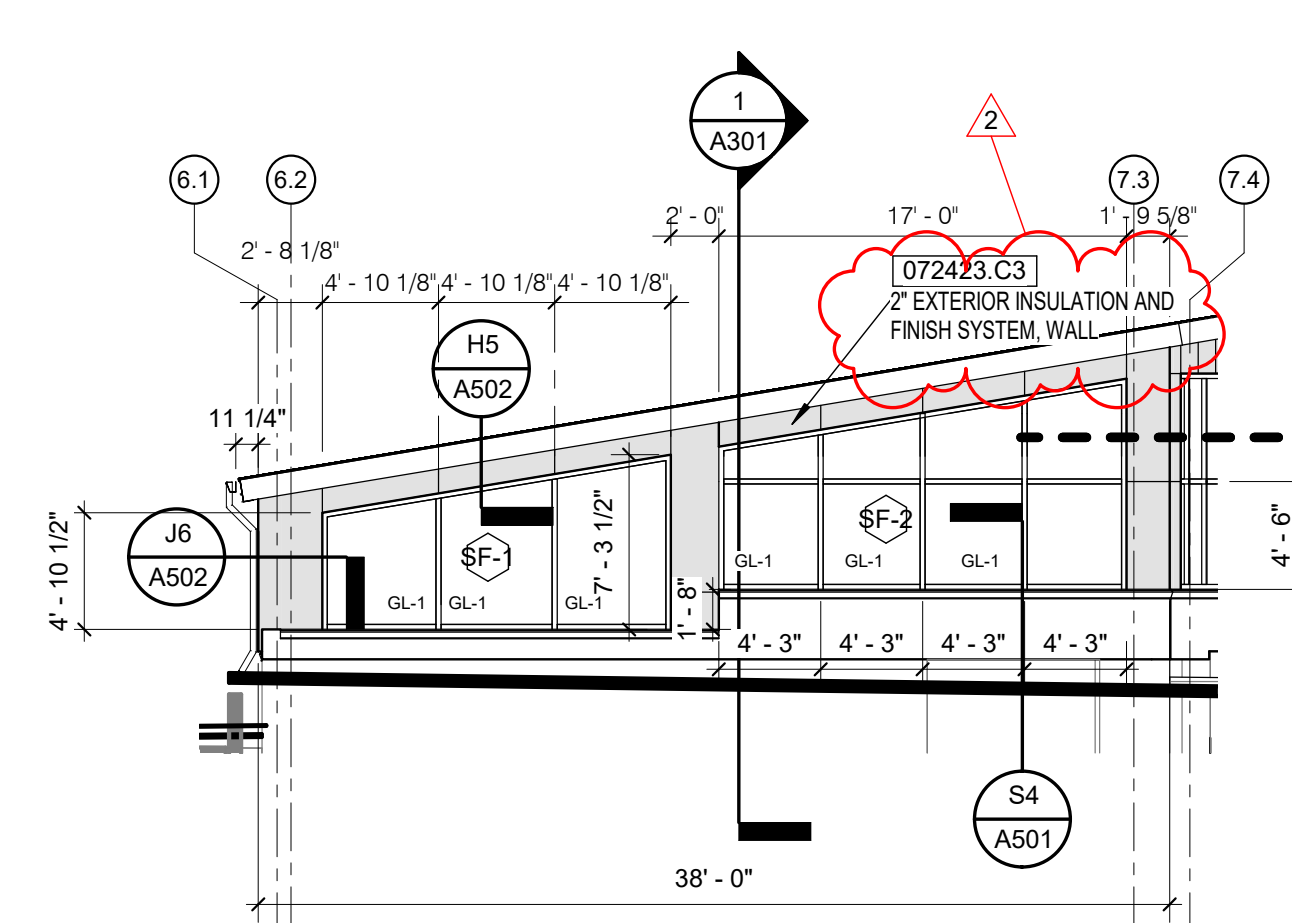
SCALE: 1/8" = 1'-0"

6

CLERESTORY NORTH ELEVATION

SCALE: 1/8" = 1'-0"

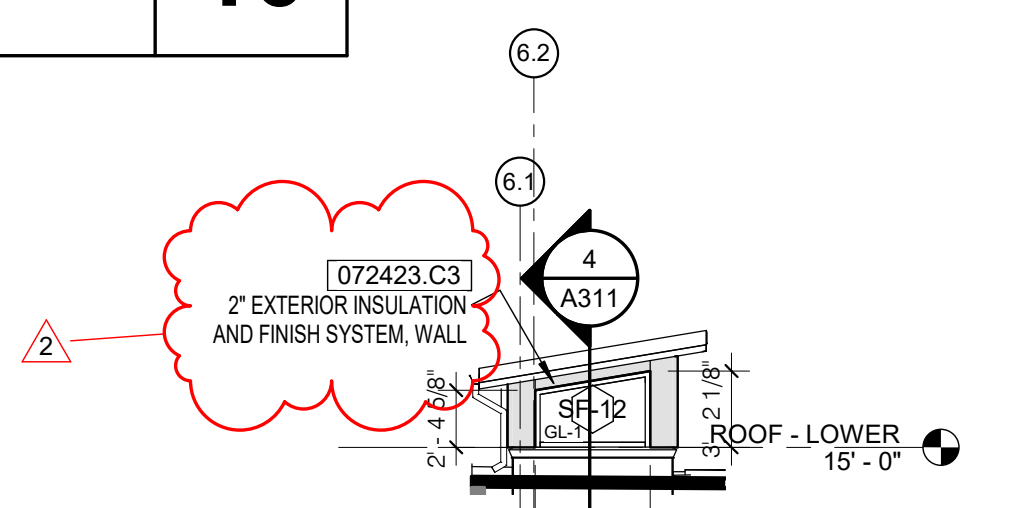
2



CLERESTORY SOUTH ELEVATION

SCALE: 1/8" = 1'-0"

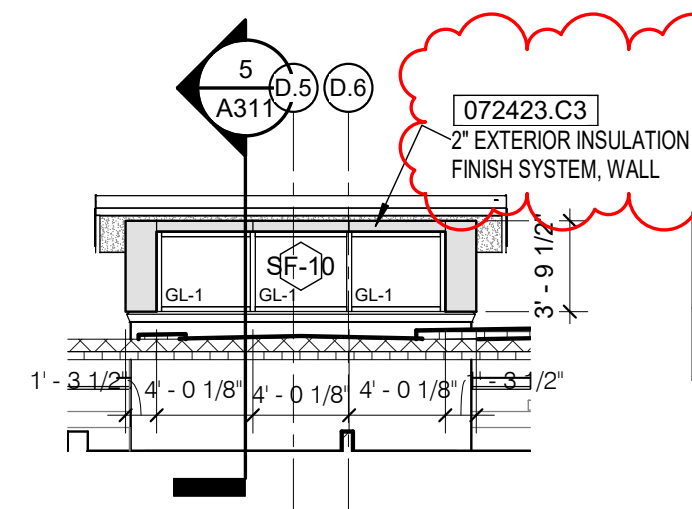
5



LH SOUTH ELEV

SCALE: 1/8" = 1'-0"

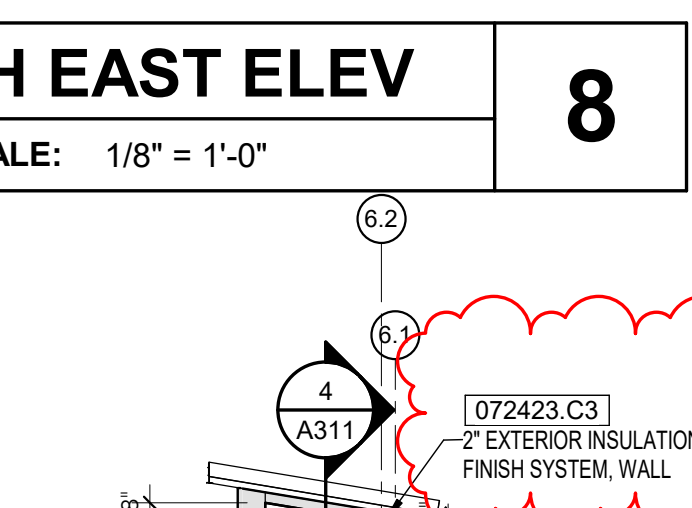
9



CLERESTORY SE ELEVATION

SCALE: 1/8" = 1'-0"

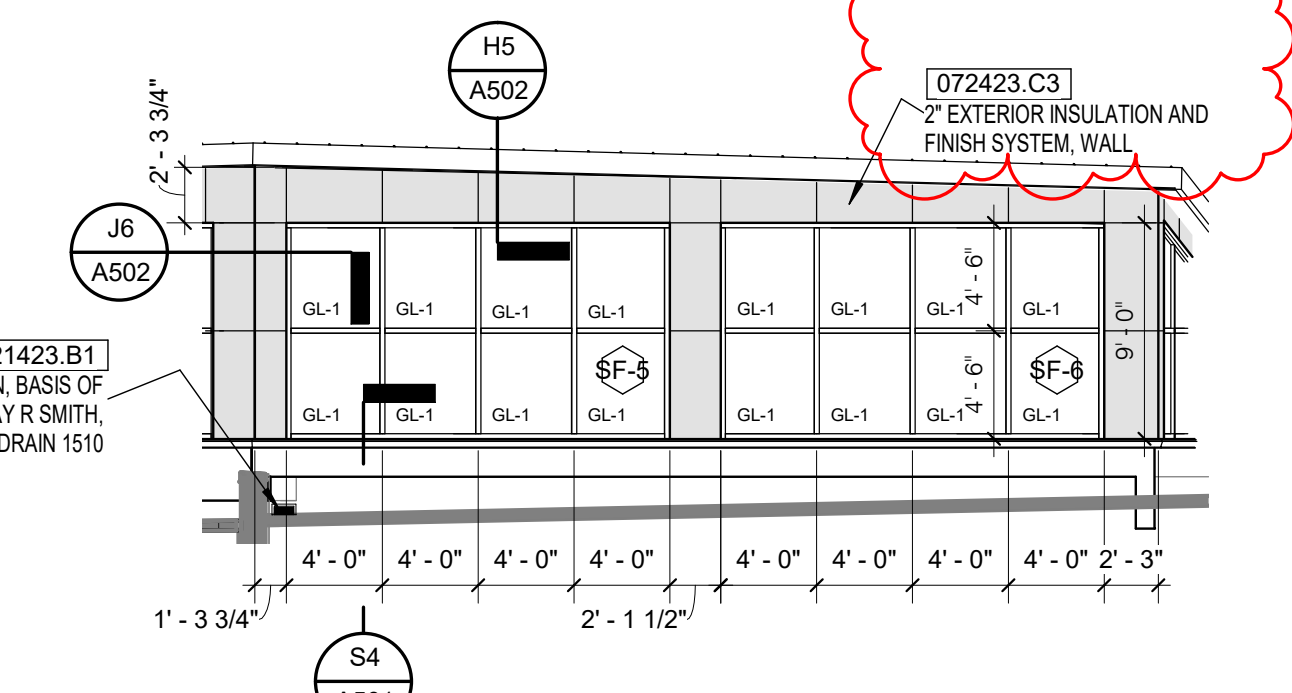
4



LH EAST ELEV

SCALE: 1/8" = 1'-0"

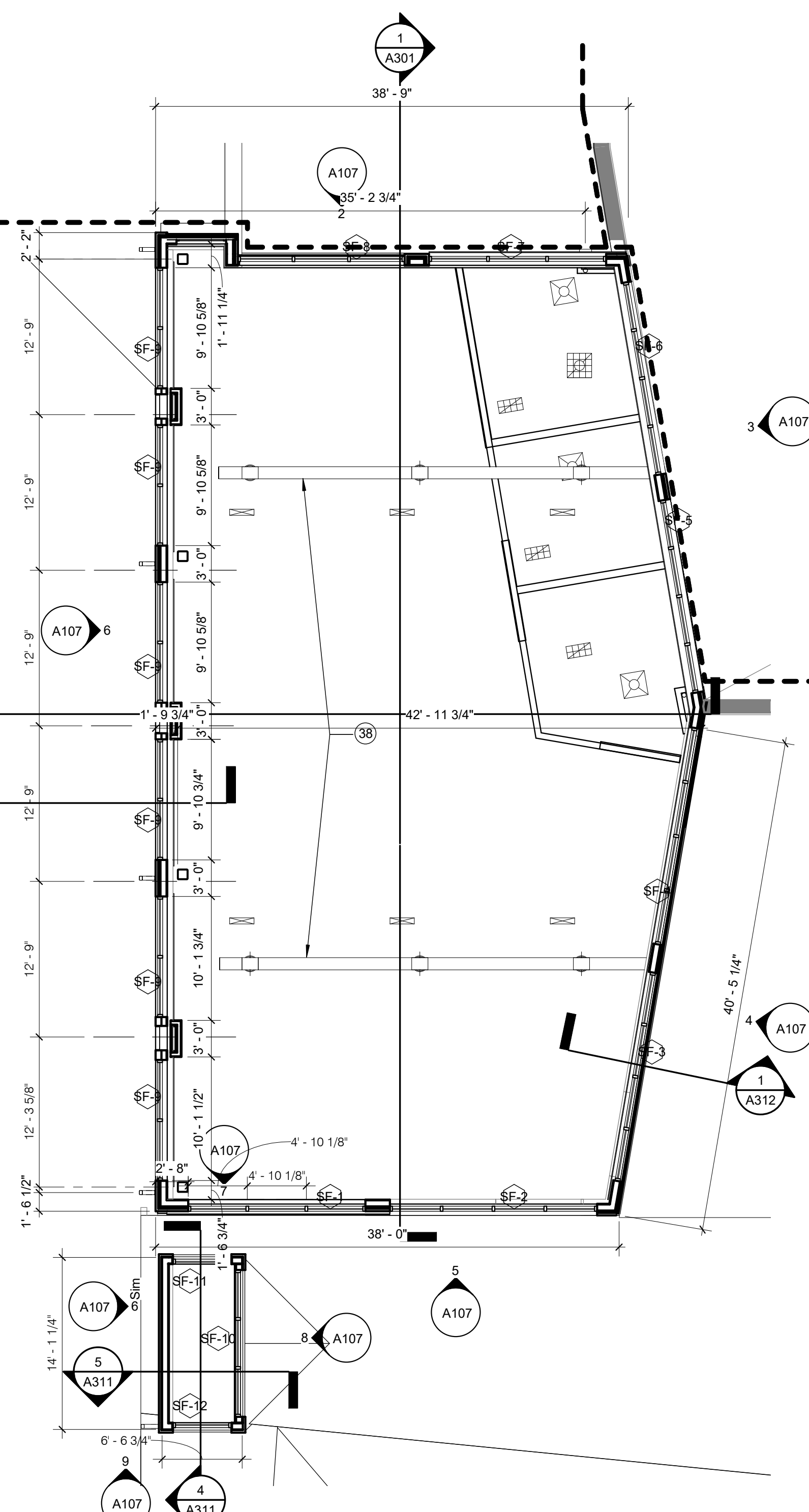
8



CLERESTORY NE ELEVATION

SCALE: 1/8" = 1'-0"

3



MEDIA CLERESTORY PLAN

SCALE: 1/8" = 1'-0"

1

GENERAL KEYNOTING

A DRAWING KEYNOTING SYSTEM IS USED ON THE DRAWINGS FOR MATERIAL REFERENCES AND NOTES. REFER TO THE MATERIAL LISTING ON THE DRAWING FOR THE INFORMATION WHICH RELATES TO EACH KEYNOTE ON THE RESPECTIVE DRAWING.

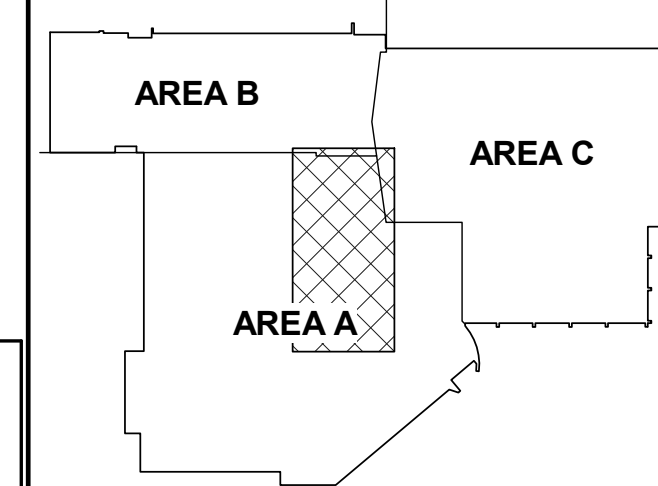
EACH KEYNOTE CONSISTS OF A 6 DIGIT NUMBER FOLLOWED BY A PERIOD AND A LETTER SUFFIX. THE 6 DIGIT NUMBER RELATES TO THE SPECIFICATION SECTION WHICH GENERALLY DESCRIBES THE ITEM THAT IS REFERENCED, AND THE LETTER SUFFIX IDENTIFIES THE SPECIFIC REFERENCE NOTATION USED ON THE DRAWING. THE LETTER SUFFIX DOES NOT RELATE TO ANY CORRESPONDING REFERENCE LETTER IN THE SPECIFICATIONS.

THE ORGANIZATION OF THE KEYNOTING SYSTEM ON THE DRAWINGS, WITH THE KEYNOTE REFERENCE NUMBERS RELATED TO THE SPECIFICATIONS SECTIONS NUMBERING SYSTEMS, SHALL NOT CONTROL THE CONTRACTOR IN DIVIDING THE WORK AMONG SUBCONTRACTORS OR IN THE ESTABLISHING OF THE EXTANT OF THE WORK TO BE PERFORMED BY ANY INSTALLER OR TRADE.

KEYNOTE LEGEND

| | |
|-----------|---|
| 072423.C3 | 2" EXTERIOR INSULATION AND FINISH SYSTEM, WALL |
| 089000.A1 | METAL LOUVER, TYP. OF 3. SEE TO MECHANICAL SHEETS AND SPECS |
| 221423.B1 | ROOF DRAIN, BASIS OF DESIGN JAY R SMITH, SCUPPER DRAIN 1510 |

KEY PLAN



Odle McGuire Shook
ARCHITECTURE INTERIOR DESIGN
LANDSCAPE ARCHITECTURE ENGINEERING
"A history of forward thinking..."
www.omscorp.net

7222 N Shadeland Avenue
Suite 100
Indianapolis, Indiana 46250
317.842.0000
Fax 317.917.0616
oms@omscorp.net

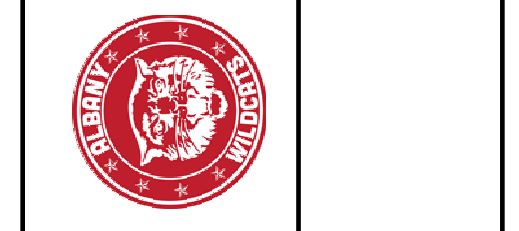
100%
CONSTRUCTION
DOCUMENTS

MATTHEW ROBERT MAYOL
REGISTERED PROFESSIONAL ARCHITECT
STATE OF INDIANA
No. 19900090
Matthew R. Mayol
CERTIFIED

| No. | Description | Date |
|-----|-------------|----------|
| 2 | ADD. 2 | 03/25/24 |

REVISIONS

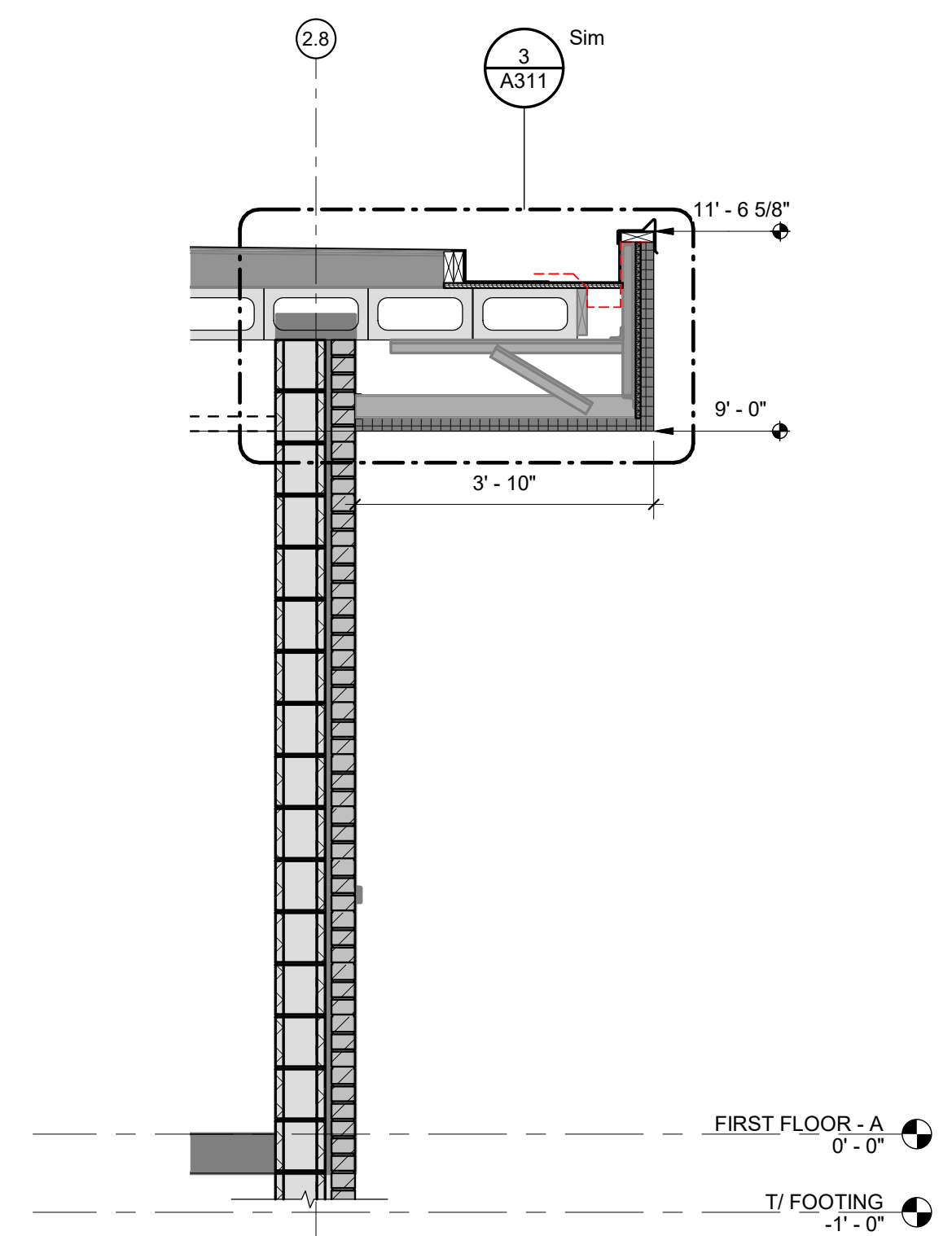
ALBANY ELEMENTARY BUILDING ADDITION & RENOVATIONS
DELAWARE COMMUNITY SCHOOL CORPORATION
700 W STATE STREET, ALBANY, INDIANA 47303



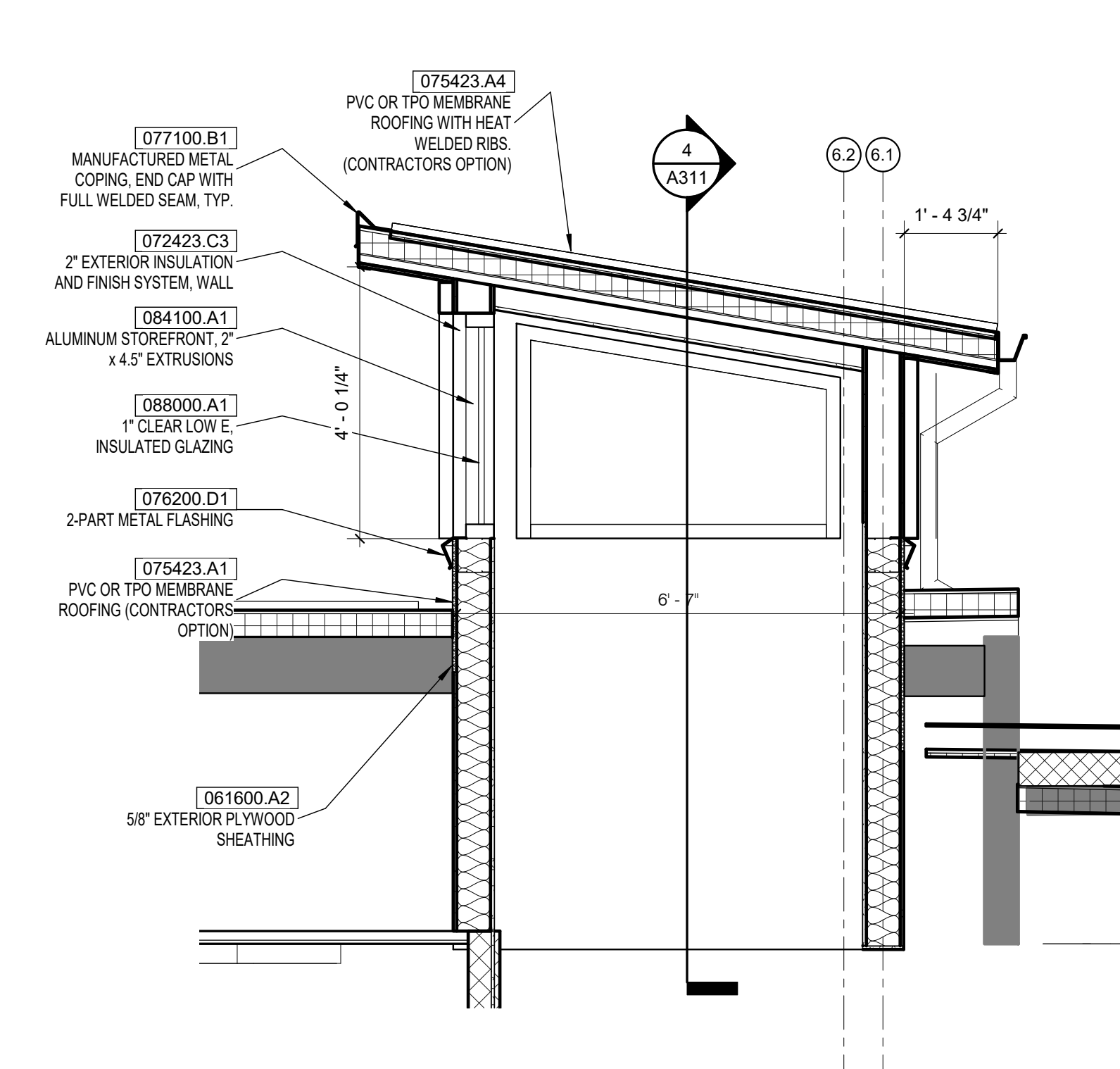
© Copyright 2024
by ODLE MCGUIRE SHOOK
Copyright includes architectural work, building design, plans or drawings, and specifications. Architectural work is the overall form as well as the arrangement and composition of spaces and elements in the design. Reproduction without written permission is prohibited.

Project number 22063
Date FEB. 26, 2024
Drawn by MFD, MPD
Checked by MRM
Designed by MRM

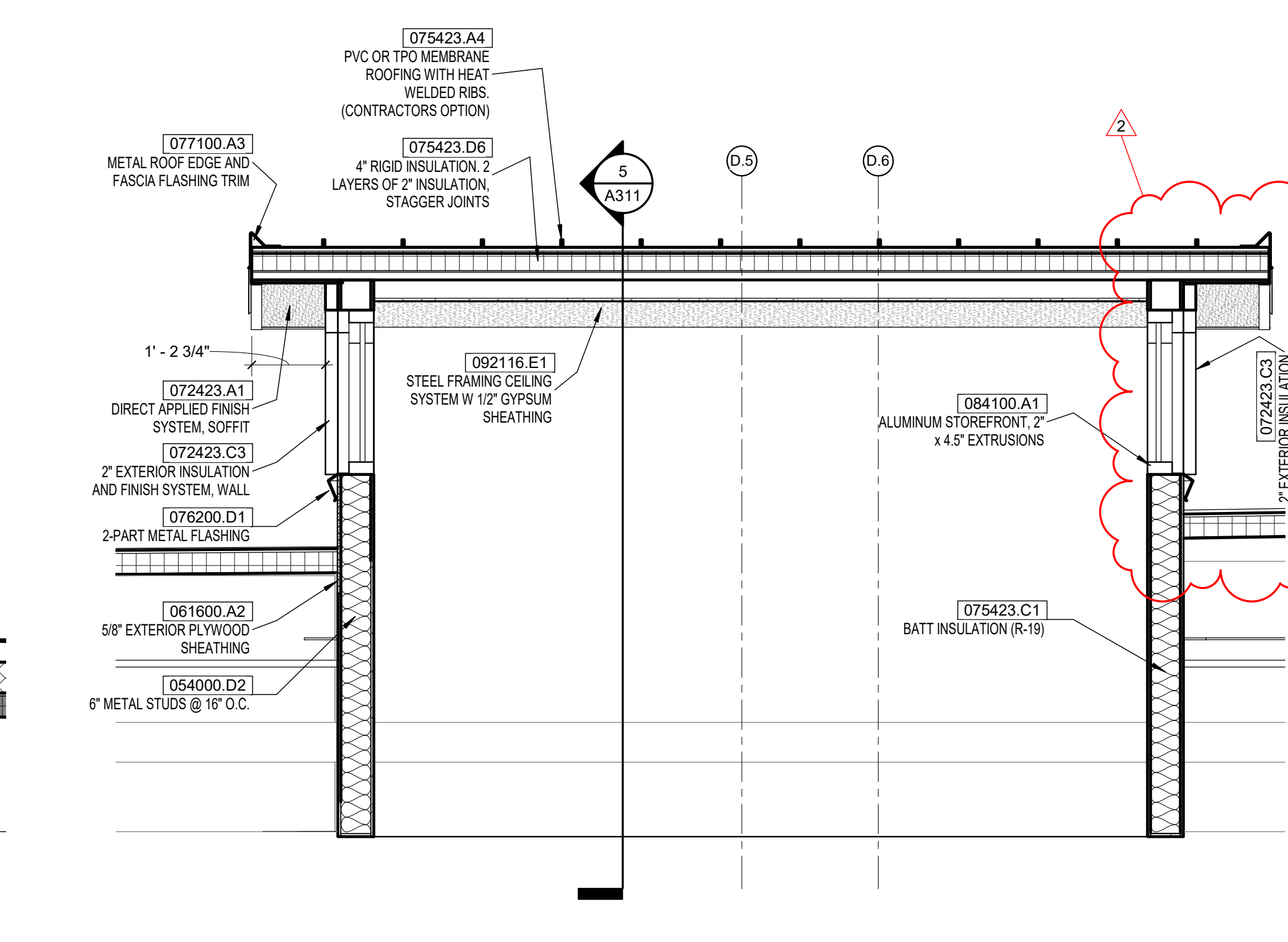
A107
CLERESTORY PLAN AND ELEVATIONS



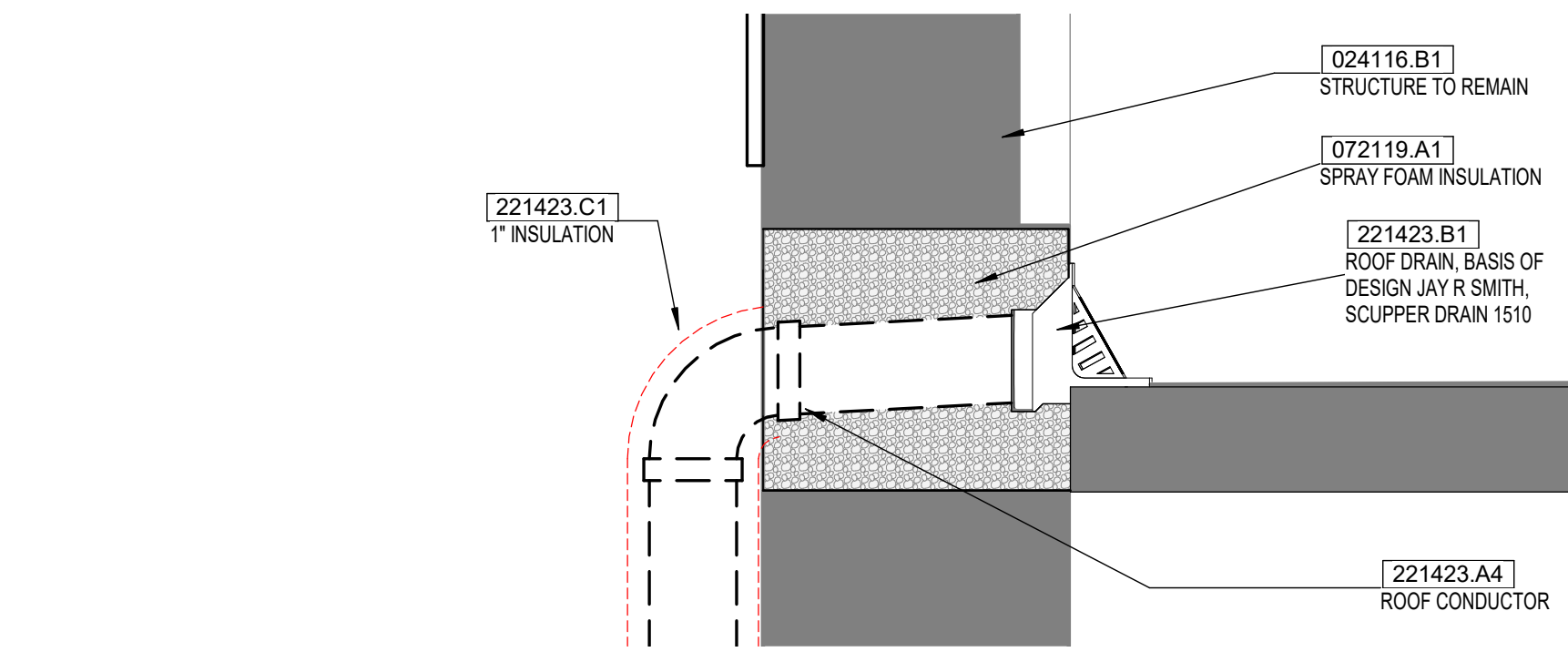
WALL SECTION, TYP.
SCALE: 1/2" = 1'-0"
6



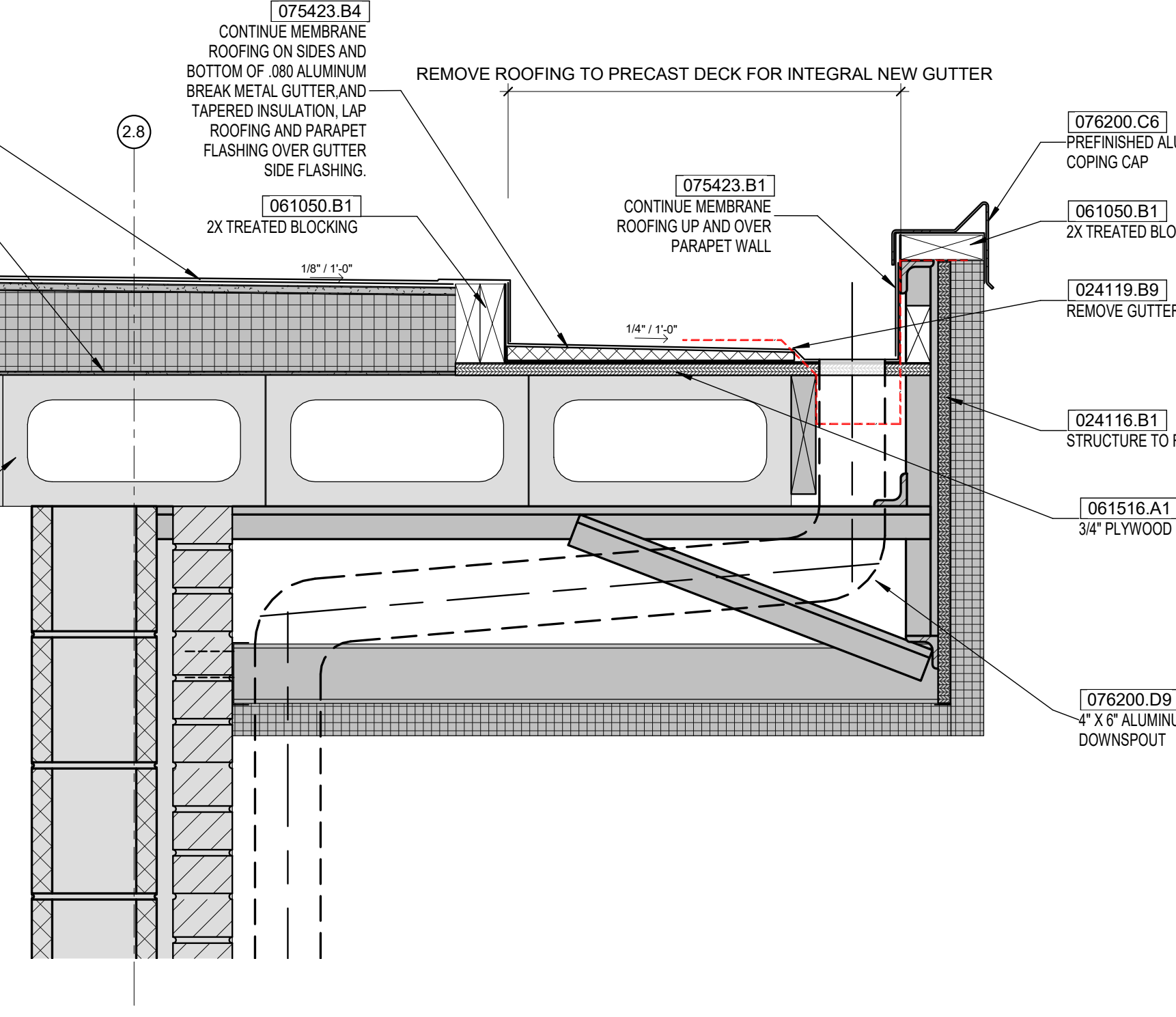
LH SECTION N
SCALE: 1/2" = 1'-0"
5



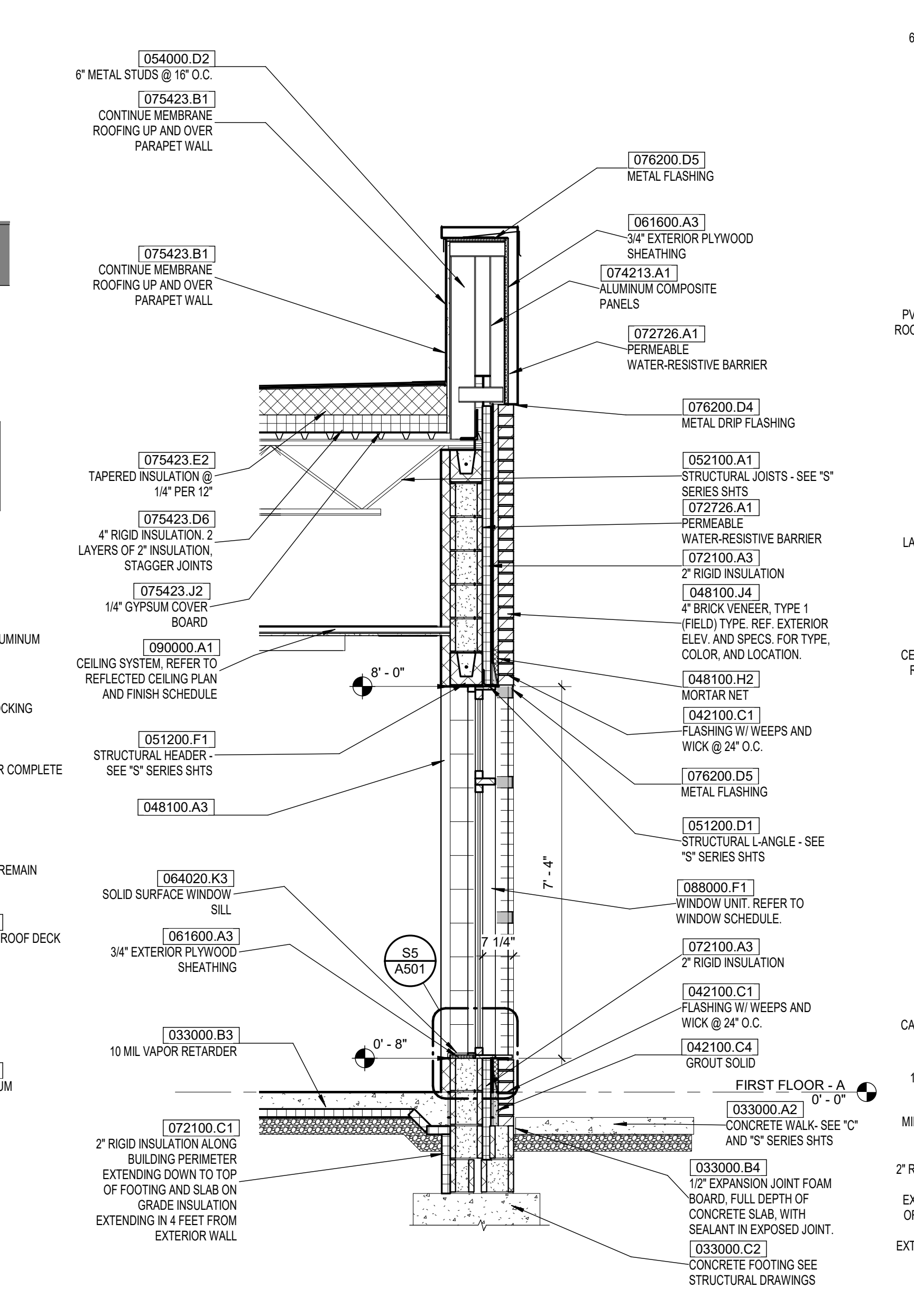
CLERESTORY WINDOW SECTION E
SCALE: 1/2" = 1'-0"
4



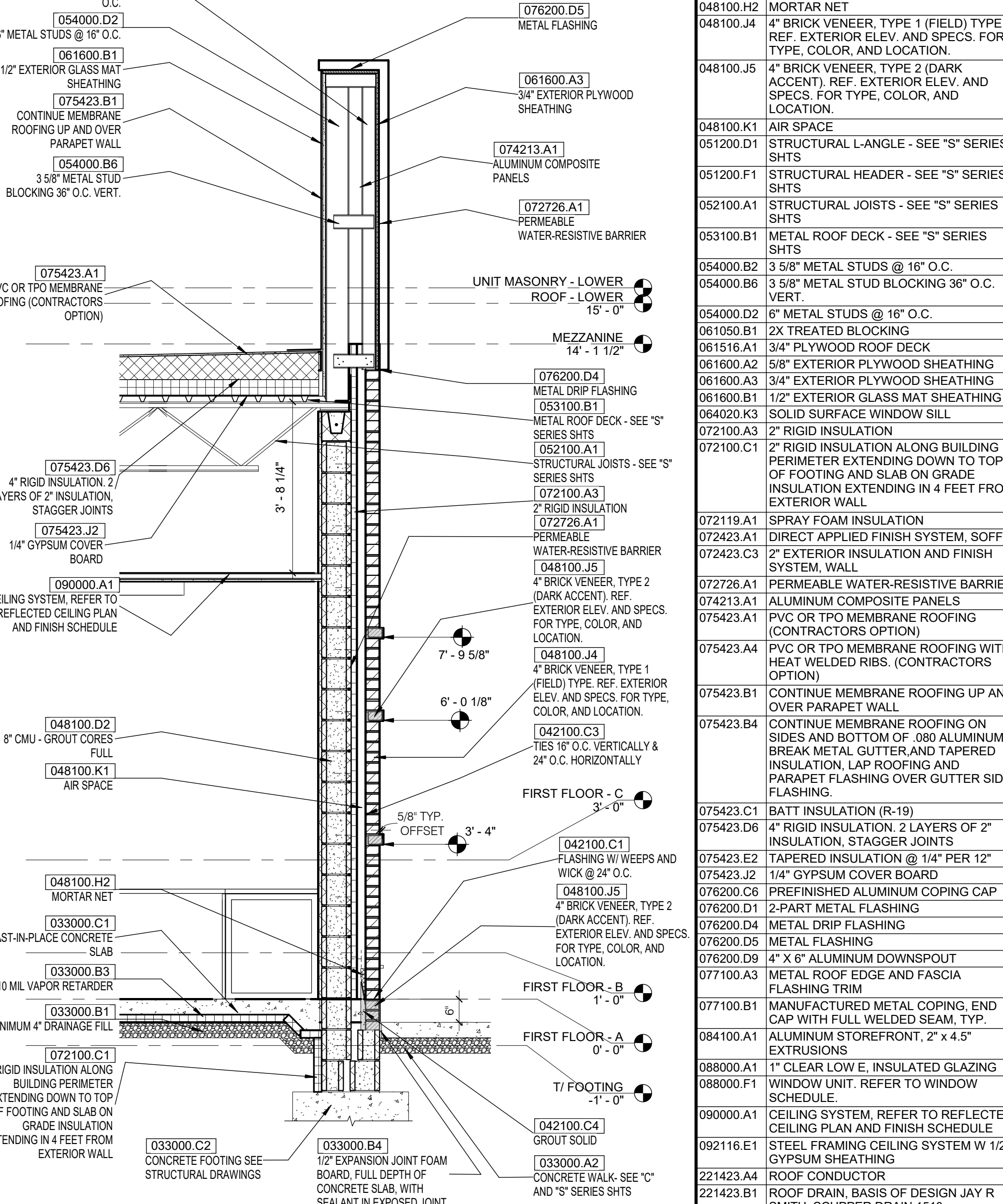
ROOF DRAIN DETAIL
SCALE: 1 1/2" = 1'-0"
7



ROOF EDGE DETAIL
SCALE: 1 1/2" = 1'-0"
3



ADMIN S.E. WINDOW SECTION
SCALE: 1/2" = 1'-0"
2



ADMIN S.E. WALL SECTION
SCALE: 1/2" = 1'-0"
1

GENERAL KEYNOTING

A DRAWING KEYNOTING SYSTEM IS USED ON THE DRAWINGS FOR MATERIAL REFERENCES AND NOTES. REFER TO THE MATERIAL LISTING ON THE DRAWING FOR THE INFORMATION WHICH RELATES TO EACH KEYNOTE ON THE RESPECTIVE DRAWING.

EACH KEYNOTE CONSISTS OF A 6 DIGIT NUMBER FOLLOWED BY A PREFIX AND A LETTER SUFFIX. THE 6 DIGIT NUMBER RELATES TO THE SPECIFICATION SECTION WHICH GENERALLY DESCRIBES THE ITEM THAT IS REFERENCED, AND THE LETTER SUFFIX IDENTIFIES THE SPECIFIC REFERENCE NOTATION USED ON THE DRAWING. THE LETTER SUFFIX DOES NOT RELATE TO ANY CORRESPONDING REFERENCE LETTER IN THE SPECIFICATIONS.

THE ORGANIZATION OF THE KEYNOTING SYSTEM ON THE DRAWINGS, WITH THE KEYNOTE REFERENCE NUMBERS RELATED TO THE SPECIFICATIONS SECTIONS NUMBERING SYSTEMS, SHALL NOT CONTROL THE CONTRACTOR IN DIVIDING THE WORK AMONG SUBCONTRACTORS OR IN THE ESTABLISHING OF THE EXTANT OF THE WORK TO BE PERFORMED BY ANY INSTALLER OR TRADE.

KEYNOTE LEGEND

| | |
|-----------|--|
| 024116.B1 | STRUCTURE TO REMAIN |
| 024116.B3 | EXISTING ROOFING TO REMAIN AS NOTED |
| 024119.B9 | REMOVE GUTTER COMPLETE |
| 033000.A2 | CONCRETE WALK- SEE "C" AND "S" SERIES SHTS |
| 033000.B1 | MINIMUM 4" DRAINAGE FILL |
| 033000.B3 | 10 MIL VAPOR RETARDER |
| 033000.B4 | 1/2" EXPANSION JOINT FOAM BOARD, FULL DEPTH OF CONCRETE SLAB, WITH SEALANT IN EXPOSED JOINT. |
| 033000.C1 | CAST-IN-PLACE CONCRETE SLAB |
| 033000.C2 | CONCRETE FOOTING SEE STRUCTURAL DRAWINGS |
| 042100.C1 | FLASHING W/ WEEPS AND WICK @ 24" O.C. |
| 042100.C3 | TIES 16" O.C. VERTICALLY & 24" O.C. HORIZONTALLY |
| 042100.C4 | GROUT SOLID |
| 048100.A3 | 8" CMU - GROUT CORES FULL |
| 048100.H2 | MORTAR NET |
| 048100.J4 | 4" BRICK VENEER, TYPE 1 (FIELD) TYPE, REF. EXTERIOR ELEV. AND SPECS. FOR TYPE, COLOR, AND LOCATION. |
| 048100.J5 | 4" BRICK VENEER, TYPE 2 (DARK ACCENT), REF. EXTERIOR ELEV. AND SPECS. FOR TYPE, COLOR, AND LOCATION. |
| 048100.K1 | AIR SPACE |
| 051200.D1 | STRUCTURAL L-ANGLE - SEE "S" SERIES SHTS |
| 051200.F1 | STRUCTURAL HEADER - SEE "S" SERIES SHTS |
| 052100.A1 | STRUCTURAL JOISTS - SEE "S" SERIES SHTS |
| 053100.B1 | METAL ROOF DECK - SEE "S" SERIES SHTS |
| 054000.B2 | 3/8" METAL STUDS @ 16" O.C. |
| 054000.B6 | 3/8" METAL STUD BLOCKING 36" O.C. VERT. |
| 054000.D2 | 6" METAL STUDS @ 16" O.C. |
| 061050.B1 | 2X TREATED BLOCKING |
| 061516.A1 | 3/4" PLYWOOD ROOF DECK |
| 061600.A2 | 5/8" EXTERIOR PLYWOOD SHEATHING |
| 061600.A3 | 3/4" EXTERIOR PLYWOOD SHEATHING |
| 061600.B1 | 1/2" EXTERIOR GLASS MAT SHEATHING |
| 064020.K3 | SOLID SURFACE WINDOW SILL |
| 072100.A3 | 2" RIGID INSULATION |
| 072100.C1 | 2" RIGID INSULATION ALONG BUILDING PERIMETER EXTENDING DOWN TO TOP OF FOOTING AND SLAB ON GRADE INSULATION EXTENDING IN 4 FEET FROM EXTERIOR WALL |
| 072119.A1 | SPRAY FOAM INSULATION |
| 072423.A1 | DIRECT APPLIED FINISH SYSTEM, SOFFIT |
| 072423.C3 | 2" EXTERIOR INSULATION AND FINISH SYSTEM, WALL |
| 072726.A1 | PERMEABLE WATER-RESISTIVE BARRIER |
| 072726.A1 | PERMEABLE WATER-RESISTIVE BARRIER |
| 075423.A1 | PVC OR TPO MEMBRANE ROOFING (CONTRACTORS OPTION) |
| 075423.A4 | PVC OR TPO MEMBRANE ROOFING WITH HEAT WELDED RIBS. (CONTRACTORS OPTION) |
| 075423.B1 | CONTINUE MEMBRANE ROOFING UP AND OVER PARAPET WALL |
| 075423.B4 | CONTINUE MEMBRANE ROOFING ON SIDES AND BOTTOM OF 080 ALUMINUM BREAK METAL GUTTER AND TAPERED INSULATION, LAP ROOFING AND PARAPET FLASHING OVER GUTTER SIDE FLASHING. |
| 075423.D6 | 4" RIGID INSULATION, 2 LAYERS OF 2" INSULATION, STAGGER JOINTS |
| 075423.E2 | TAPERED INSULATION @ 1/4" PER 12" |
| 075423.J2 | 1/4" GYPSUM COVER BOARD |
| 077100.A3 | METAL ROOF EDGE AND FASCIA FLASHING TRIM |
| 077100.B1 | MANUFACTURED METAL COPING, END CAP WITH FULL WELDED SEAM, TYP. |
| 084100.A1 | ALUMINUM STOREFRONT, 2" x 4.5" EXTRUSIONS |
| 088000.A1 | 1" CLEAR LOW E, INSULATED GLAZING WINDOW UNIT. REFER TO WINDOW SCHEDULE. |
| 088000.F1 | WINDOW UNIT. REFER TO WINDOW SCHEDULE. |
| 090000.A1 | CEILING SYSTEM, REFER TO REFLECTED CEILING PLAN AND FINISH SCHEDULE |
| 092116.E1 | STEEL FRAMING CEILING SYSTEM W/ 1/2" GYPSUM SHEATHING |
| 221423.A4 | ROOF DRAIN, BASIS OF DESIGN JAY R SMITH, SCUPPER DRAIN 1510 |
| 221423.C1 | 1" INSULATION |

Odle McGuire Shook
ARCHITECTURE INTERIOR DESIGN
LANDSCAPE ARCHITECTURE ENGINEERING
"A history of forward thinking..."
www.omscorp.net

7222 N Shadeland Avenue
Suite 100
Indianapolis, Indiana 46250
317.842.0000
Fax 317.917.0616
oms@omscorp.net

100% CONSTRUCTION DOCUMENTS

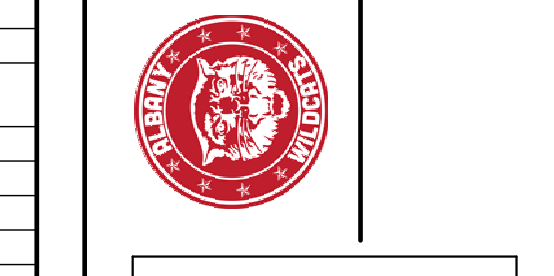
MATTHEW ROBERT MAYO
REGISTERED ARCHITECT
No. 19900090
STATE OF INDIANA

Matthew R. Mayo
CERTIFIED

| No. | Description | Date |
|-----|-------------|----------|
| 2 | ADD 2 | 03/25/24 |

REVISIONS

ALBANY ELEMENTARY BUILDING ADDITION & RENOVATIONS
DELAWARE COMMUNITY SCHOOL CORPORATION
700 W STATE STREET, ALBANY, INDIANA 47303



© Copyright 2024
by ODLE MCGUIRE SHOOK
Copyright includes architectural work, building design, plans or drawings, and specifications. Architectural work is the overall form as well as the arrangement and composition of spaces and elements in the design. Reproduction without written permission is prohibited.

Project number 22063
Date FEB. 26, 2024
Drawn by MFD, MWT
Checked by MRM
Designed by MRM

A311
WALL SECTIONS

WINDOW SCHEDULE

| MARK | WIDTH | HEIGHT | COMMENTS |
|------|-------|--------|----------|
| W1 | 3'-0" | 7'-4" | |
| W2 | 6'-0" | 7'-4" | |

KEYNOTE LEGEND

| | |
|-----------|--|
| 042100.C4 | GROUT SOLID |
| 048100.A1 | CONCRETE MASONRY UNIT, REF ARCH WALL TYPES |
| 048100.A2 | CONCRETE MASONRY BOND BEAM, REF STRUC DOCS AND ARCH WALL TYPES |
| 051200.J1 | STEEL REBAR - SEE "S" SERIES SHTS |
| 054000.G1 | METAL STUDS, SEE WALL SECTIONS AND "S" SHTS. |
| 061600.A3 | 3/4" EXTERIOR PLYWOOD SHEATHING |
| 064020.K3 | SOLID SURFACE WINDOW SILL |
| 072423.C3 | 2" EXTERIOR INSULATION AND FINISH SYSTEM, WALL |
| 072600.A1 | INTERIOR 6 MIL SHEET VAPOR RETARDER BEHIND 5/8" GYPSUM BOARD |
| 075423.C1 | BATT INSULATION (R-19) |
| 079116.A1 | WIPER GASKET |
| 079200.A1 | CONTINUOUS JOINT SEALANT |
| 079200.A3 | CONTINUOUS JOINT SEALANT, BOTH SIDES |
| 084100.A1 | ALUMINUM STOREFRONT, 2" x 4.5" EXTRUSIONS |
| 088000.F1 | WINDOW UNIT, REFER TO WINDOW SCHEDULE. |
| 092116.C1 | 5/8" TYPE "X" GYPSUM BOARD |

DOOR SCHEDULE

| DOOR # | TYPE | DOOR | | | FRAME | | HEAD | JAMB | SILL | FIRE RATING | COMMENTS |
|--------|------|------------|------------|--------|----------|------|------|------|------|-------------|----------|
| | | W. | H. | T. | MATERIAL | TYPE | | | | | |
| A101 | C | (PR) 3'-0" | 7'-0" | 1 1/2" | ALUM/GLS | 1 | ALUM | H3 | J5 | S1 | 2 |
| A102 | C | (PR) 3'-0" | 7'-0" | 1 1/2" | ALUM/GLS | 1 | ALUM | H4 | J5 | | 2 |
| A102B | B | 3'-0" | 7'-0" | 1 3/4" | SCW | 1 | HM | H4 | J5 | | 2 |
| A102C | C | (PR) 3'-0" | 7'-0" | 1 1/2" | ALUM/GLS | 1 | ALUM | H4 | J5 | | 2 |
| A102D | C | 3'-0" | 7'-0" | 1 1/2" | ALUM/GLS | 1 | ALUM | - | - | | 2 |
| A103A | B | 3'-0" | 7'-0" | 1 3/4" | SCW | 1 | HM | H1 | J1 | 20 MIN | 2 |
| A103B | B | 3'-0" | 7'-0" | 1 3/4" | SCW | 1 | HM | H1 | J1 | | 2 |
| A104 | B | 3'-0" | 7'-0" | 1 3/4" | SCW | 1 | HM | H1 | J1 | | |
| A105 | B | 3'-0" | 7'-0" | 1 3/4" | SCW | 1 | HM | H1 | J1 | | |
| A106 | B | 3'-0" | 7'-0" | 1 3/4" | SCW | 1 | HM | H1 | J1 | | |
| A107 | B | 3'-0" | 7'-0" | 1 3/4" | SCW | 1 | HM | H1 | J1 | | |
| A108 | B | 3'-0" | 7'-0" | 1 3/4" | SCW | 1 | HM | H1 | J1 | | |
| A108A | B | (PR) 2'-6" | 7'-0" | 1 1/2" | SCW | - | - | H1 | J1 | | 14 |
| A109 | B | 3'-0" | 7'-0" | 1 3/4" | SCW | 1 | HM | H1 | J1 | 20 MIN | 2 |
| A111 | A | 3'-0" | 7'-0" | 1 3/4" | SCW | 1 | HM | H1 | J1 | | |
| A112 | A | 3'-0" | 7'-0" | 1 3/4" | SCW | 1 | HM | H1 | J1 | | |
| A113 | A | 3'-0" | 7'-0" | 1 3/4" | SCW | 1 | HM | H1 | J1 | | |
| A114 | - | 3'-6" | 7'-0" | - | - | 1 | HM | H1 | J1 | 5 | |
| A115 | B | 3'-0" | 7'-0" | 1 3/4" | SCW | 1 | HM | H1 | J1 | | |
| A116 | A | 3'-0" | 7'-0" | 1 3/4" | SCW | 1 | HM | H1 | J1 | | |
| A117 | A | 3'-0" | 7'-0" | 1 3/4" | SCW | 1 | HM | H7 | J7 | | |
| A119 | A | 3'-0" | 7'-0" | 1 3/4" | SCW | 1 | HM | H1 | J1 | 20 MIN | |
| A120 | A | 3'-0" | 7'-0" | 1 3/4" | SCW | 1 | HM | H1 | J1 | 20 MIN | |
| A121 | A | 3'-0" | 7'-0" | 1 3/4" | SCW | 1 | HM | H1 | J1 | | |
| A123 | B | 3'-6" | 7'-0" | 1 3/4" | SCW | 1 | HM | H1 | J1 | 20 MIN | 2 |
| A123A | A | 3'-6" | 7'-0" | 1 3/4" | SCW | 1 | HM | H1 | J1 | | |
| A123B | B | 3'-6" | 7'-0" | 1 3/4" | SCW | 1 | HM | H1 | J1 | 1, 4, 7 | |
| A125 | A | 3'-6" | 7'-0" | 1 3/4" | SCW | 1 | HM | H1 | J1 | 7 | |
| A126 | B | 3'-6" | 7'-0" | 1 3/4" | SCW | 1 | HM | H1 | J1 | 20 MIN | 2, 7 |
| A126A | B | 3'-6" | 7'-0" | 1 3/4" | SCW | 1 | HM | H1 | J1 | 1, 4, 7 | |
| A126B | A | 3'-6" | 7'-0" | 1 3/4" | SCW | 1 | HM | H1 | J1 | 90 MIN | 7 |
| A126C | B | 3'-6" | 7'-0" | 1 3/4" | SCW | 1 | HM | H1 | J1 | 90 MIN | 7 |
| A129 | A | (PR) 4'-0" | 7'-0" | 1 3/4" | SCW | 1 | HM | H1 | J1 | 90 MIN | 7, 12 |
| A144 | B | 3'-0" | 7'-0" | 1 3/4" | SCW | 1 | HM | H1 | J1 | | |
| A145 | B | 3'-0" | 7'-0" | 1 3/4" | SCW | 1 | HM | H1 | J1 | 20 MIN | 2 |
| A147 | C | 3'-0" | 7'-0" | 1 1/2" | ALUM/GLS | 1 | ALUM | H1 | J3 | 90 MIN | |
| A147A | C | 3'-8 1/2" | 8'-10 1/2" | 1 1/2" | ALUM/GLS | 1 | ALUM | H1 | J3 | | 10 |
| A147B | C | 3'-8 1/2" | 8'-10 1/2" | 1 1/2" | ALUM/GLS | 1 | ALUM | H1 | J3 | | 10 |
| A147C | A | 3'-0" | 7'-0" | 1 3/4" | SCW | 1 | HM | H1 | J1 | | |
| A147D | C | 3'-0" | 7'-0" | 1 1/2" | ALUM/GLS | 1 | ALUM | H1 | J3 | 90 MIN | |
| A148A | A | 3'-0" | 7'-0" | 1 3/4" | SCW | 1 | HM | H1 | J1 | 20 MIN | 2 |
| A148B | A | 3'-0" | 7'-0" | 1 3/4" | SCW | 1 | HM | H1 | J1 | 20 MIN | 2 |
| A149 | A | (PR) 4'-0" | 7'-0" | 1 3/4" | SCW | 1 | HM | H1 | J1 | 90 MIN | 7, 12 |
| A152 | B | 3'-0" | 7'-0" | 1 3/4" | SCW | 1 | HM | H1 | J1 | 20 MIN | |
| A154 | B | 3'-0" | 7'-0" | 1 3/4" | SCW | 1 | HM | H1 | J1 | 20 MIN | |
| B101 | C | (PR) 3'-0" | 7'-0" | 1 3/4" | SCW | 1 | HM | H1 | J1 | 90 MIN | |
| B104A | A | (PR) 4'-0" | 7'-0" | 1 3/4" | SCW | 1 | HM | H1 | J1 | 90 MIN | 7, 12 |
| C104 | A | 3'-0" | 7'-0" | 1 3/4" | SCW | 1 | HM | H1 | J1 | | |
| C104A | A | 3'-0" | 7'-0" | 1 3/4" | SCW | 1 | HM | H1 | J1 | | |
| C105 | B | 3'-0" | 7'-0" | 1 3/4" | SCW | 1 | HM | H1 | J1 | 20 MIN | |
| C106 | A | (PR) 4'-0" | 7'-0" | 1 3/4" | SCW | 2 | HM | H7 | J7 | 90 MIN | 12 |
| C112 | B | 3'-0" | 7'-0" | 1 3/4" | SCW | 1 | HM | H1 | J1 | 20 MIN | |
| C113 | B | 3'-0" | 7'-0" | 1 3/4" | SCW | 1 | HM | H1 | J1 | 20 MIN | |
| C130 | B | 3'-0" | 7'-0" | 1 3/4" | SCW | 1 | HM | H1 | J1 | 20 MIN | |
| C132 | A | 3'-8" | 7'-0" | 1 3/4" | SCW | 1 | HM | H1 | J1 | 2 | |

HARDWARE NOTES

- VERIFY ALL LOCK FUNCTIONS AND KEYING WITH OWNER.
- ALL HARDWARE SETS WITH CLOSERS TO HAVE BALL BEARING HINGES.
- ALL DOORS W/CLOSERS TO HAVE KICKPLATES ON PUSH SIDE OF DOOR. SIZE TO BE 10" HIGH X 2" LESS WIDTH OF DOOR.
- ALL PASSAGE AND LOCKSETS TO BE LEVER TYPE, COMPLYING TO ALL APPLICABLE ADA REQUIREMENTS.
- ALL HARDWARE FINISHES TO BE US26D OR 626 STAIN CHROMIUM PLATED OR APPROVED EQUAL.
- INTERIOR DOOR OPENING FORCE NOT TO EXCEED 5 LBS.
- THRESHOLDS AND FLOORING MATERIAL TRANSITIONS TO COMPLY WITH ALL APPLICABLE ADA REQUIREMENTS.
- VERIFY OWNER EQUIPMENT WIDTHS PRIOR TO DOOR INSTALLATIONS.
- FIRE RATED DOORS TO HAVE CLOSERS AND UL LISTED HARDWARE IF/AS REQ'D. ALL EXTERIOR DOORS SHALL BE INSULATED.
- AIR LEAKAGE FOR EXTERIOR DOORS AND WINDOWS SHALL BE DETERMINED IN ACCORDANCE WITH NFRC 400. AIR LEAKAGE SHALL BE DETERMINED BY A LABORATORY ACCREDITED BY A NATIONALLY RECOGNIZED ACCREDITATION ORGANIZATION LIKE NFRC. AIR LEAKAGE AS LABELED BY THE MANUFACTURER SHALL NOT EXCEED 1.0 CFM/SQFT FOR GLAZED DOORS AND 40 CFM/SQFT FOR ALL OTHER DOOR AND WINDOW PRODUCTS.
- ALL EXISTING DOORS AND FRAMES INDICATED BY (X000) ARE EXISTING TO REMAIN. PAINT HOLLOW METAL DOORS AND FRAMES. CLEAN & RESTORE WOOD DOORS TO LIKE NEW CONDITION AND STAIN. COORDINATE WITH ARCHITECT IF DOOR DAMAGE REQUIRES PAINT, OR STAIN WOULD NOT BE AN ACCEPTABLE FINISH.

MATERIAL ABBREVIATIONS

| | |
|-------|-----------------------|
| ALUM | ALUMINUM |
| EX | EXISTING |
| FL | FLUSH |
| FG | FULL GLASS |
| GLS | GLASS |
| HG | HALF GLASS |
| HCW | HOLLOW CORE WOOD DOOR |
| INSUL | INSULATED |
| MFGR | MANUFACTURER |
| NL | NARROW LIGHT |
| OHC | OVERHEAD COILING DOOR |
| PR | PAIR |
| SCW | SOLID CORE WOOD DOOR |
| STL | STEEL |
| TEMP | TEMPERED |

GLAZING SCHEDULE

PROVIDE 1" CLEAR INSULATED TEMPERED GLAZING A EXT. OPENINGS U.N.O. (088000.A2)

PROVIDE 1/4" CLEAR TEMPERED GLAZING AT INT. OPENINGS U.N.O. (088000.B2)

PROVIDE 1/2" CLEAR TEMPERED GLAZING AT FOCUS ROOMS A147A & A147B (088000.C1)

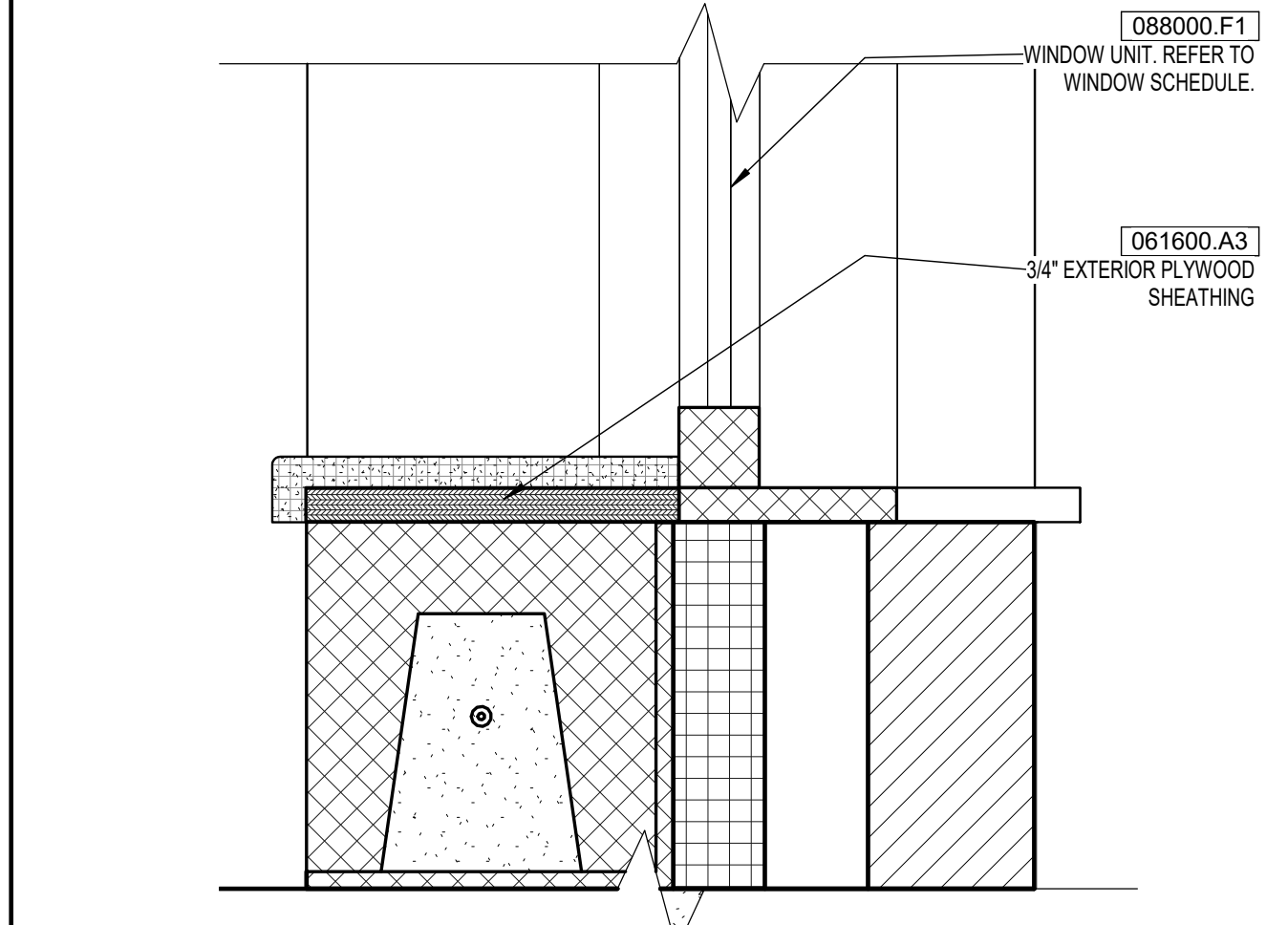
PROVIDE FIRE RATED GLAZING WHERE INDICATED ON PLAN & DOOR SCHED. (088000.D1)

GENERAL KEYNOTING

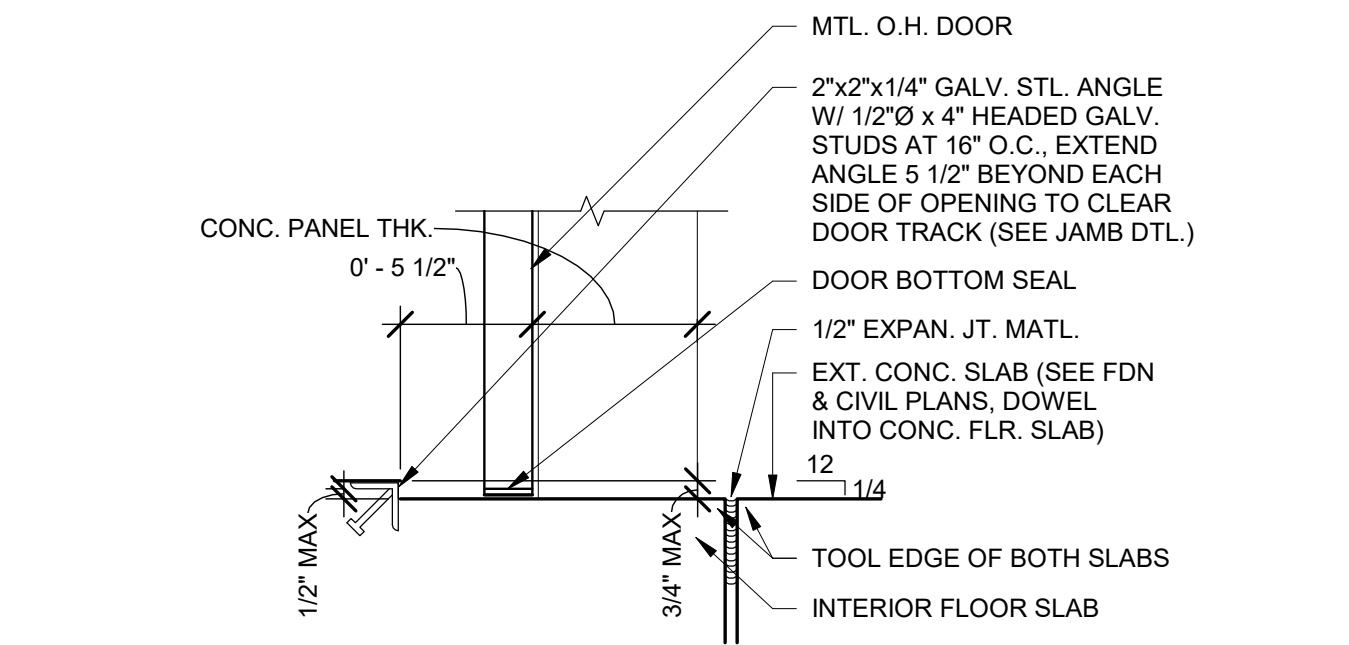
A DRAWING KEYNOTING SYSTEM IS USED ON THE DRAWINGS FOR MATERIAL REFERENCES AND NOTES. REFER TO THE MATERIAL LISTING ON THE DRAWING FOR THE INFORMATION WHICH RELATES TO EACH KEYNOTE ON THE RESPECTIVE DRAWING.

EACH KEYNOTE CONSISTS OF A 6 DIGIT NUMBER FOLLOWED BY A PERIOD AND A LETTER SUFFIX. THE 6 DIGIT NUMBER RELATES TO THE SPECIFICATION SECTION WHICH GENERALLY DESCRIBES THE ITEM THAT IS REFERENCED, AND THE LETTER SUFFIX IDENTIFIES THE SPECIFIC REFERENCE NOTATION USED ON THE DRAWING. THE LETTER SUFFIX DOES NOT RELATE TO ANY CORRESPONDING REFERENCE LETTER IN THE SPECIFICATIONS.

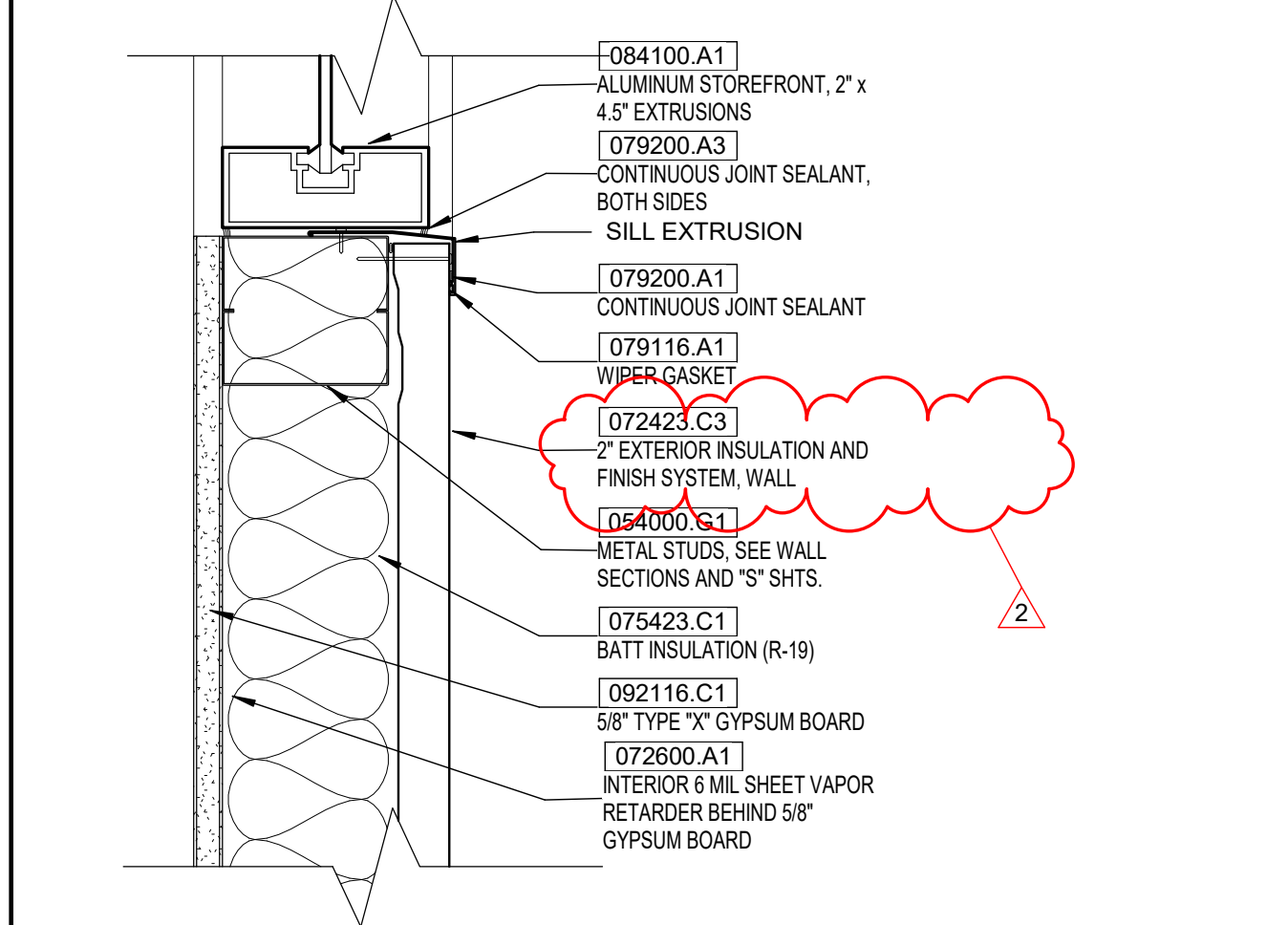
THE ORGANIZATION OF THE KEYNOTING SYSTEM ON THE DRAWINGS, WITH THE KEYNOTE REFERENCE NUMBERS RELATED TO THE SPECIFICATIONS SECTIONS NUMBERING SYSTEMS, SHALL NOT CONTROL THE CONTRACTOR IN DIVIDING THE WORK AMONG SUBCONTRACTORS OR IN THE ESTABLISHING OF THE EXTANT OF THE WORK TO BE PERFORMED BY ANY INSTALLER OR TRADE.



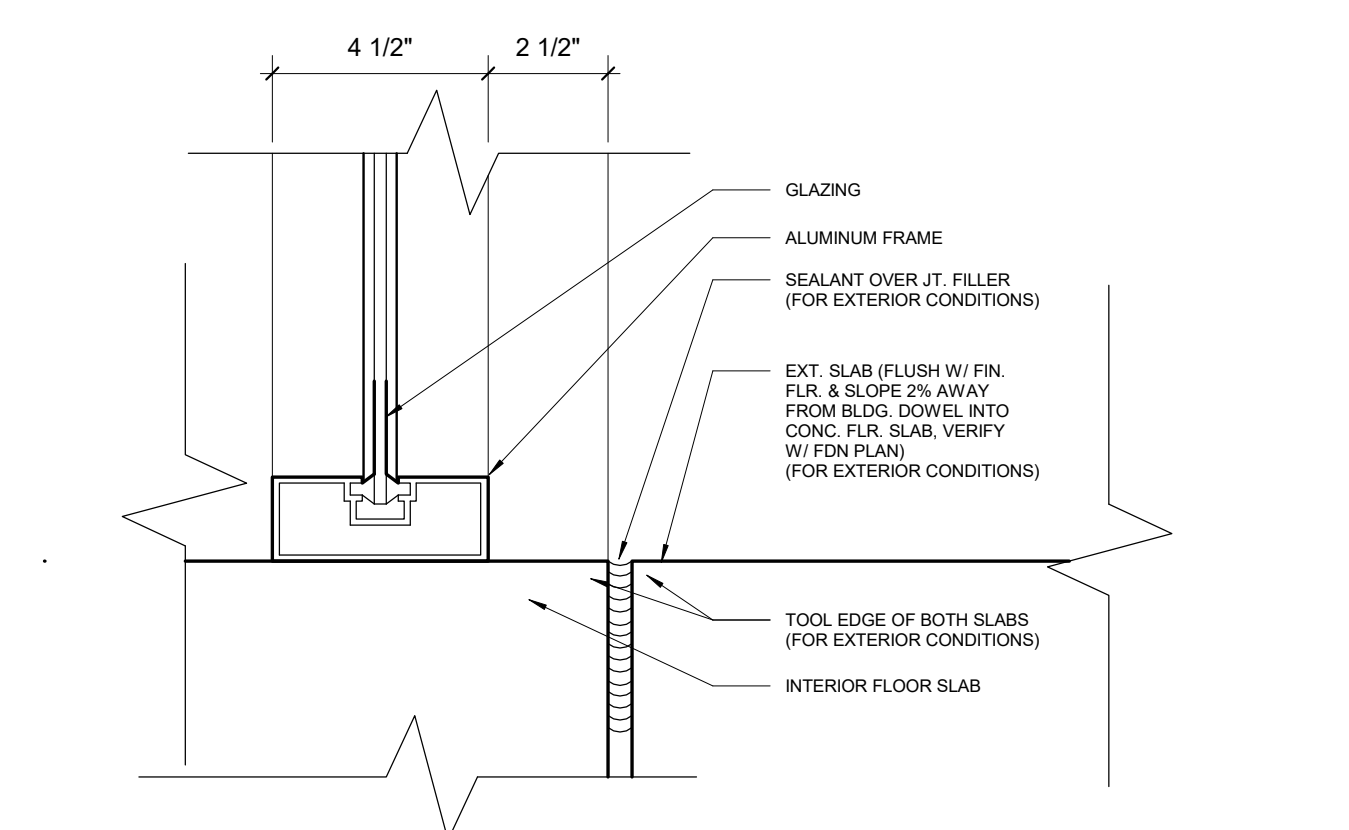
EXTERIOR SILL - CMU **S5**
SCALE: 3" = 1'-0"



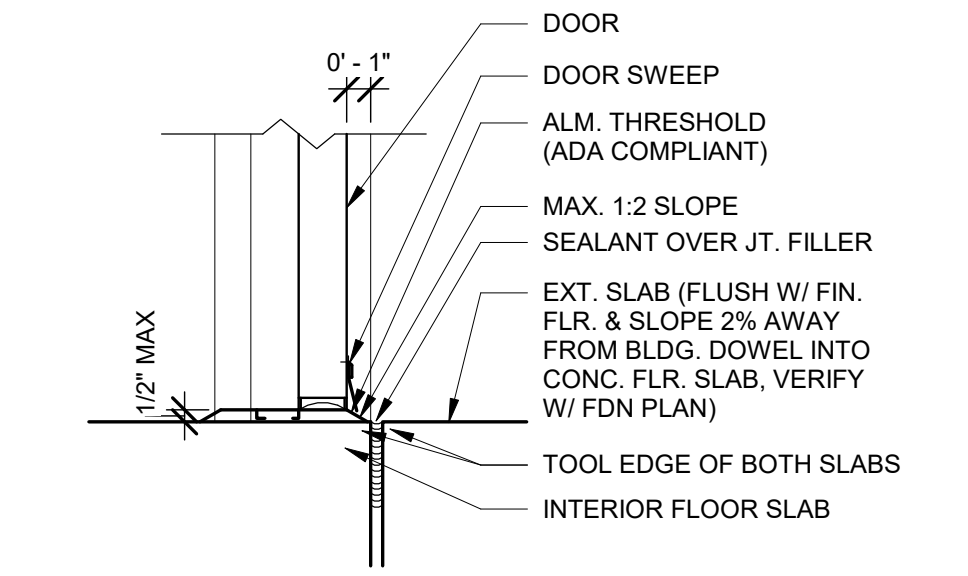
EXT. OH SILL DETAIL **S6**
SCALE: 1 1/2" = 1'-0"



EXT. SILL - SF_MTL STUD **S4**
SCALE: 3" = 1'-0"



EXT. SILL - SF FINISHED FLOOR **S2**
SCALE: 3" = 1'-0"

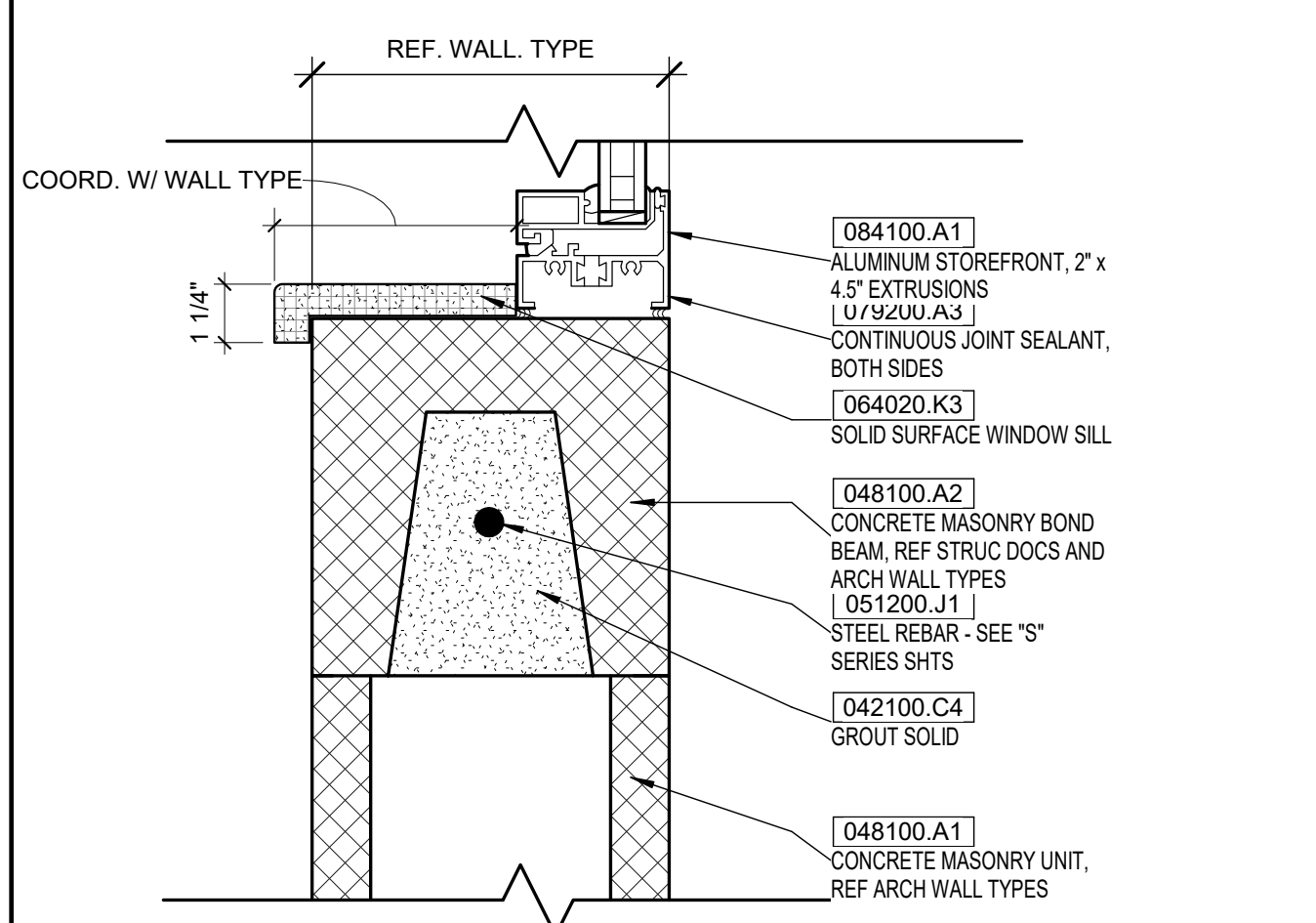


EXT. SILL DETAIL **S1**
SCALE: 1 1/2" = 1'-0"

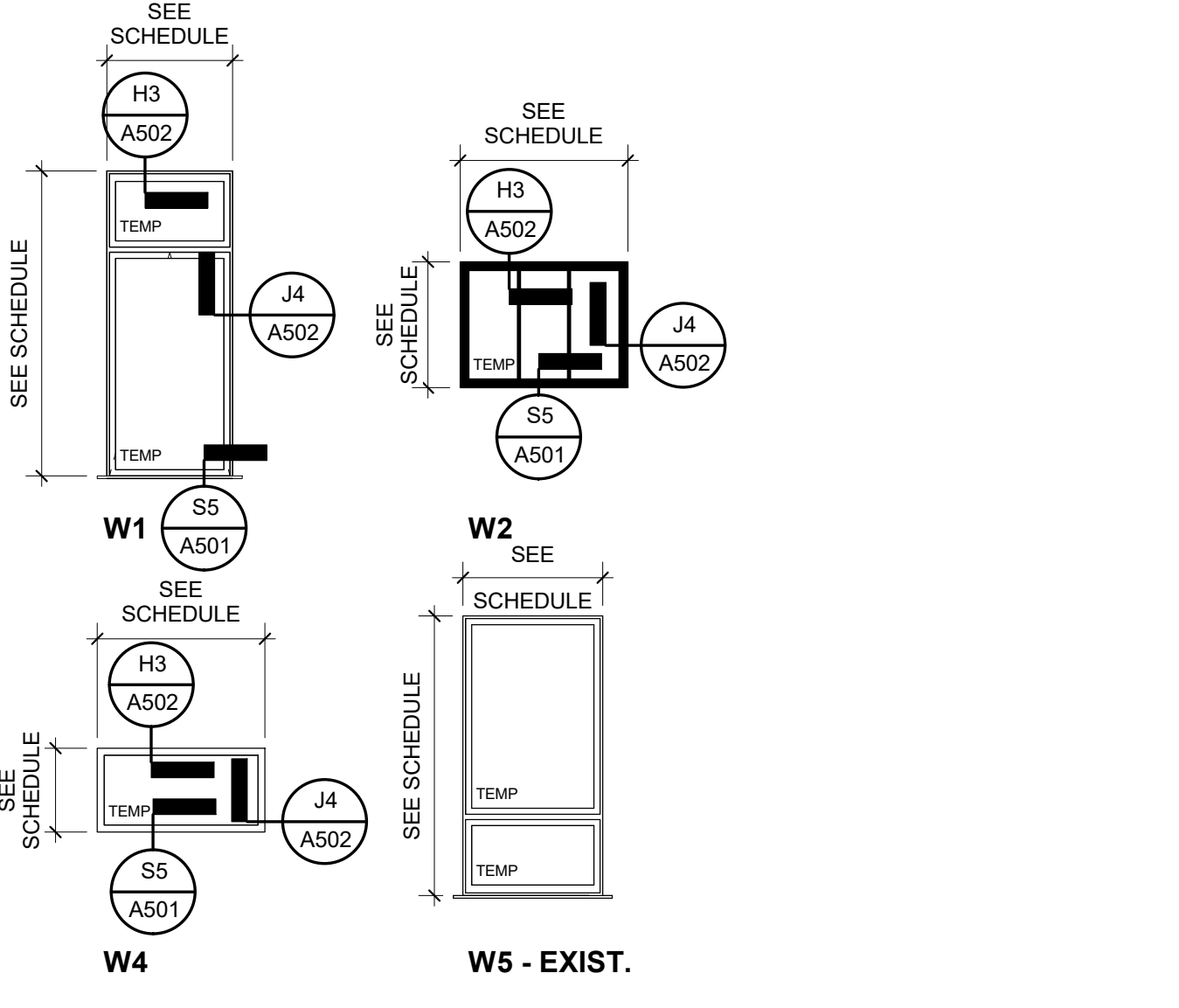
REF. SECTION 087100 DOOR HARDWARE FOR HARDWARE SETS AT EACH OPENING.

REF AI - ARCHITECTURAL INTERIORS DWGS FOR FRAME PAINT COLORS

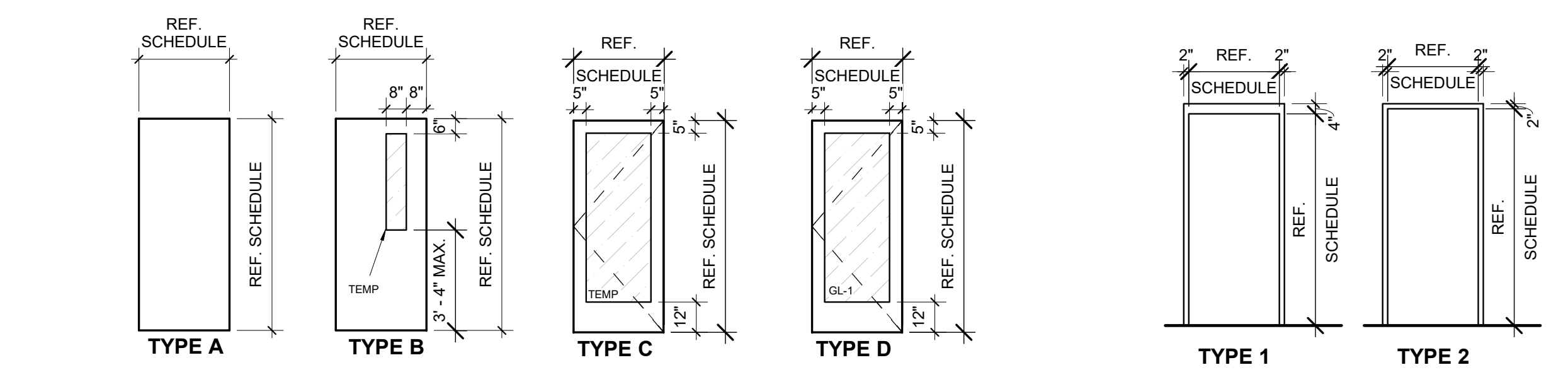
- DOOR SCHEDULE COMMENTS:
- BRING POWER TO DOOR HEADER. DOOR POSITION SWITCH. PREP DOOR(S) FOR ACCESS CONTROL BY OWNERS SECURITY CONSULTANT.
 - NOT USED.
 - HOLD SHUT PUSH BUTTON.
 - CASED OPENING
 - NOT USED.
 - PROVIDE FOUR (4) HINGES
 - NOT USED.
 - NOT USED.
 - SLIDER DOOR ON TRACK
 - PAINT EXST. DOOR & FRAME
 - PREP DOOR(S) FOR HOLD OPEN
 - NOT USED.
 - PAIR OF BI-FOLD DOORS



INTERIOR SILL - CMU SF **S3**
SCALE: 3" = 1'-0"



WINDOW TYPES
SCALE: 1/4" = 1'-0"



DOOR TYPES **FRAME TYPES**
SCALE: 1/4" = 1'-0"

Odle McGuire Shook
ARCHITECTURE INTERIOR DESIGN
LANDSCAPE ARCHITECTURE ENGINEERING
"A history of forward thinking..."
www.omsCorp.net

7222 N Shadeland Avenue
Suite 100
Indianapolis, Indiana 46250
317.842.0000
Fax 317.917.0616
oms@omsCorp.net

100%
CONSTRUCTION
DOCUMENTS

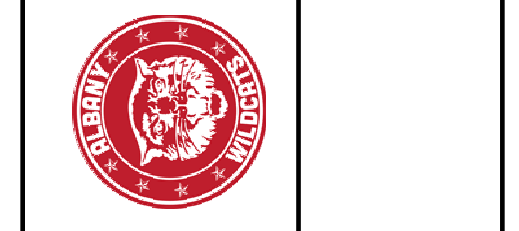
MATTHEW ROBERT MAYOL
No. 19900090
STATE OF INDIANA
ARCHITECT

Matthew R. Mayol
CERTIFIED

| No. | Description | Date |
|-----|-------------|----------|
| 2 | ADD. 2 | 03/25/24 |

REVISIONS

ALBANY ELEMENTARY BUILDING ADDITION & RENOVATIONS
DELAWARE COMMUNITY SCHOOL CORPORATION
 700 W STATE STREET, ALBANY, INDIANA 47303



© Copyright 2024
by ODLE MCGUIRE SHOOK
Copyright includes architectural work, building design, plans or drawings, and specifications. Architectural work is the overall form as well as the arrangement and composition of spaces and elements in the design. Reproduction without written permission is prohibited.

Project number 22063
Date FEB. 26, 2024
Drawn by MFD, MPD
Checked by MRM
Designed by MRM

A501
OPENING SCHEDULES AND DETAILS

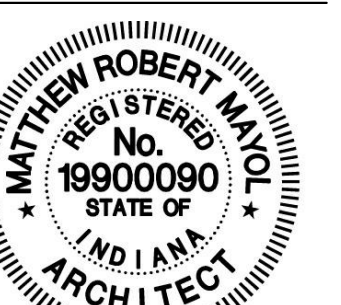


Odle McGuire Shook
ARCHITECTURE INTERIOR DESIGN
LANDSCAPE ARCHITECTURE ENGINEERING
"A history of forward thinking..."

www.omsgrp.net

7222 N Shadeland Avenue
Suite 100
Indianapolis, Indiana 46250
317.842.0000
Fax 317.917.0616
oms@omsgrp.net

100%
CONSTRUCTION
DOCUMENTS



Matthew R. Mayo

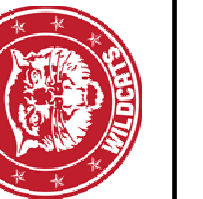
CERTIFIED

| No. | Description | Date |
|-----|-------------|----------|
| 2 | ADD 2 | 03/25/24 |

REVISIONS

ALBANY ELEMENTARY BUILDING ADDITION & RENOVATIONS
DELAWARE COMMUNITY SCHOOL CORPORATION

700 W STATE STREET, ALBANY, INDIANA 47303



© Copyright 2024

by OGLE MCGUIRE SHOOK
Copyright includes architectural work, building design, plans or drawings, and specifications. Architectural work is the overall form as well as the arrangement and composition of spaces and elements in the design. Reproduction without written permission is prohibited.

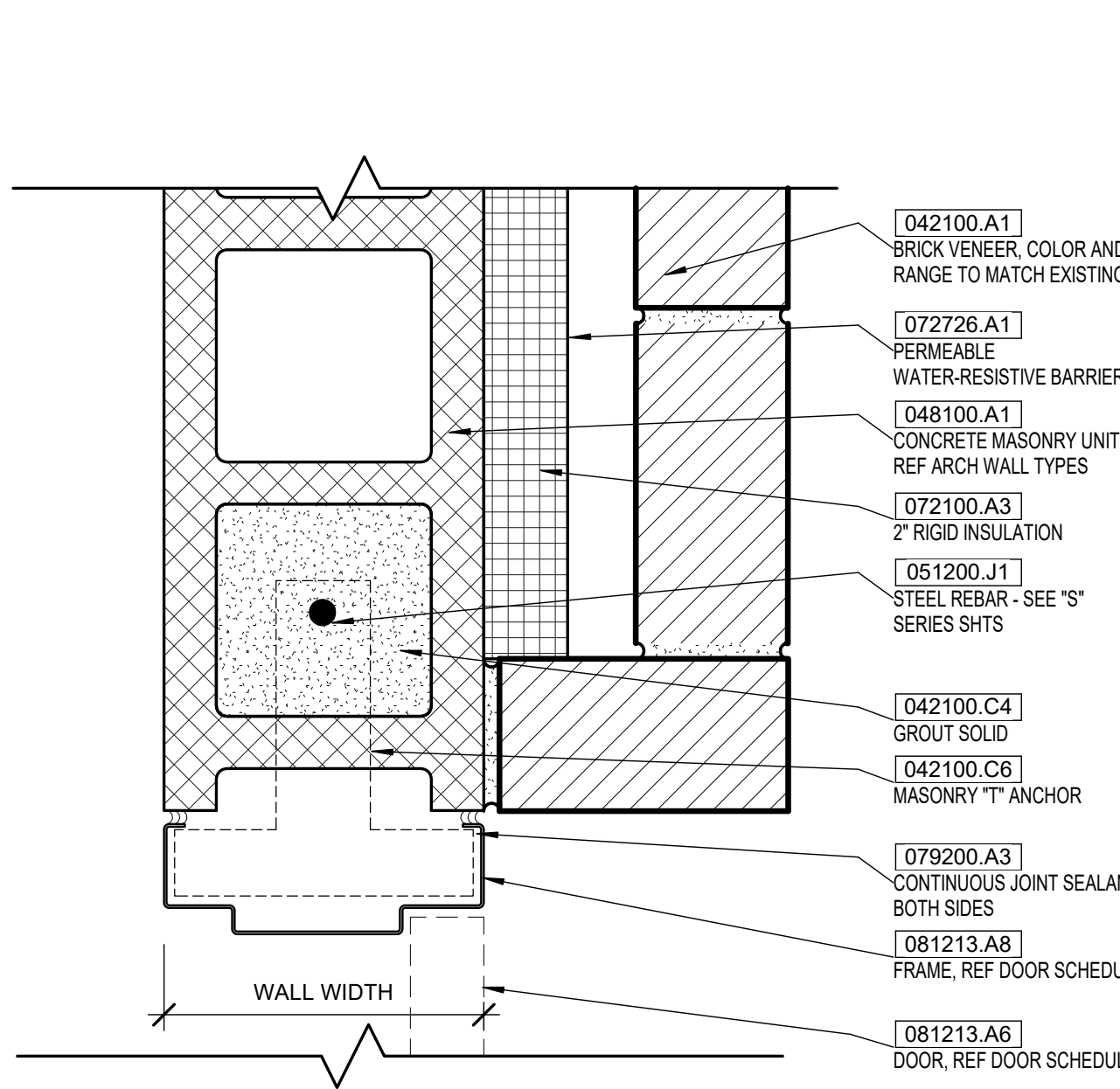
Project number 22063
Date FEB. 26, 2024
Drawn by MFD, MPD
Checked by MRM
Designed by MRM

A502

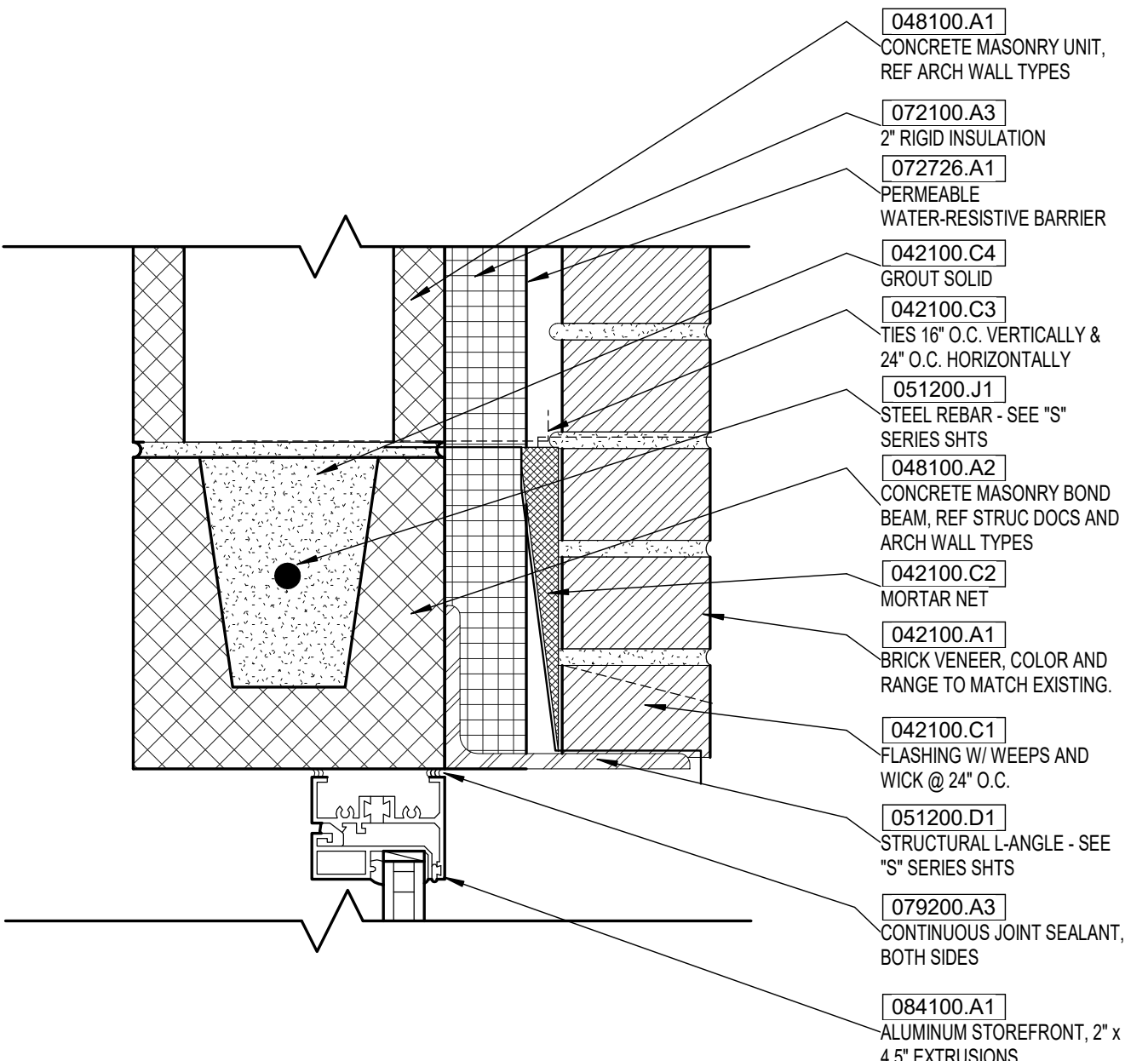
OPENING DETAILS & ELEVATIONS

KEYNOTE LEGEND

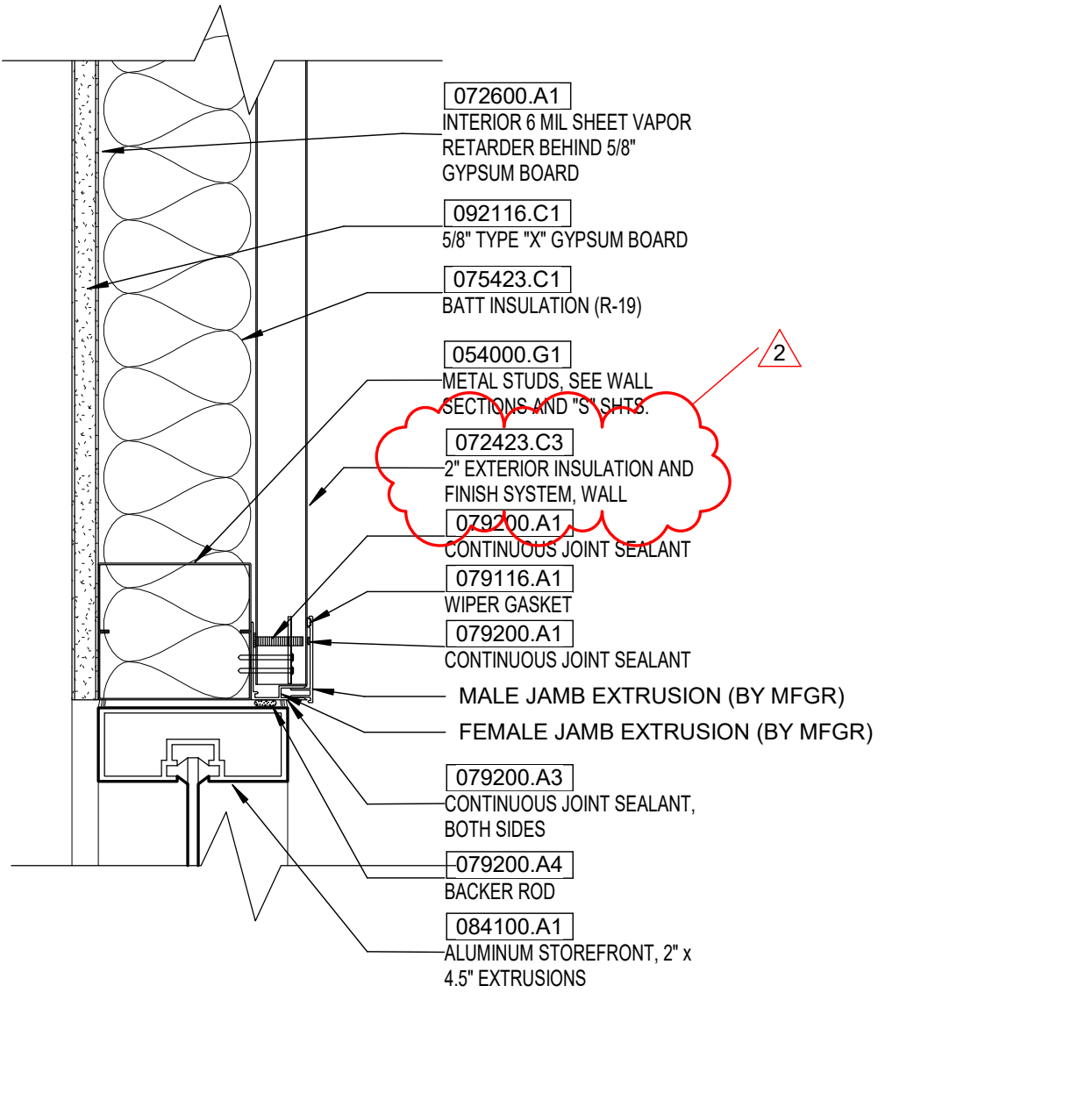
| | |
|-----------|---|
| 042100.A1 | BRICK VENEER, COLOR AND RANGE TO MATCH EXISTING. |
| 042100.C1 | FLASHING W/ WEEPS AND WICK @ 24" O.C. |
| 042100.C2 | MORTAR NET |
| 042100.C3 | TIES 16" O.C. VERTICALLY & 24" O.C. HORIZONTALLY |
| 042100.C4 | GROUT SOLID |
| 042100.C6 | MASONRY "T" ANCHOR |
| 048100.A1 | CONCRETE MASONRY UNIT, REF ARCH WALL TYPES |
| 048100.A2 | CONCRETE MASONRY BOND BEAM, REF STRUC DOCS AND ARCH WALL TYPES |
| 048100.D1 | 8" CMU |
| 048100.D5 | 8" CMU, BULL NOSE AT OPENINGS, TYP. |
| 048100.K1 | AIR SPACE |
| 051200.D1 | STRUCTURAL L-ANGLE - SEE "S" SERIES SHTS |
| 051200.J1 | STEEL REBAR - SEE "S" SERIES SHTS |
| 054000.G1 | METAL STUDS, SEE WALL SECTIONS AND "S" SERIES SHTS |
| 072100.A3 | 2" RIGID INSULATION |
| 072423.C3 | 2" EXTERIOR INSULATION AND FINISH SYSTEM, WALL |
| 072600.A1 | INTERIOR 6 MIL SHEET VAPOR RETARDER BEHIND 5/8" GYPSUM BOARD |
| 072726.A1 | PERMEABLE WATER-RESISTIVE BARRIER |
| 075423.C1 | BATT INSULATION (R-19) |
| 076200.D9 | 4" X 6" ALUMINUM DOWNSPOUT |
| 079116.A1 | WIPER GASKET |
| 079200.A1 | CONTINUOUS JOINT SEALANT |
| 079200.A3 | CONTINUOUS JOINT SEALANT, BOTH SIDES |
| 079200.A4 | BACKER ROD |
| 081213.A6 | DOOR, REF DOOR SCHEDULE |
| 081213.A8 | FRAME, REF DOOR SCHEDULE |
| 084100.A1 | ALUMINUM STOREFRONT, 2' x 4.5' EXTRUSIONS |
| 092116.C1 | 5/8" TYPE "X" GYPSUM BOARD |
| 092116.G3 | SOUND ATTENUATION BLANKETS, REF. TO WALL TYPE. |
| 092116.H9 | SHIM SPACE |
| 092116.N3 | LIGHT GAGE METAL STUD FRAMING, JACK AND KING JAMB STUDS, REFER TO ARCH SHEETS WALL TYPES AND STRUCTURAL LINTEL SCHEDULE |
| 092116.N4 | LIGHT GAGE METAL STUD BOX HEADER, REFER TO ARCH SHEETS WALL TYPES AND STRUCTURAL LINTEL SCHEDULE |
| 092216.A1 | NON-STRUCTURAL METAL FRAMING, REFER TO WALL TYPE FOR SIZE. COORDINATE WITH MANUFACTURER FOR SPAN, GAUGE, AND BRACING, REQUIREMENTS. |



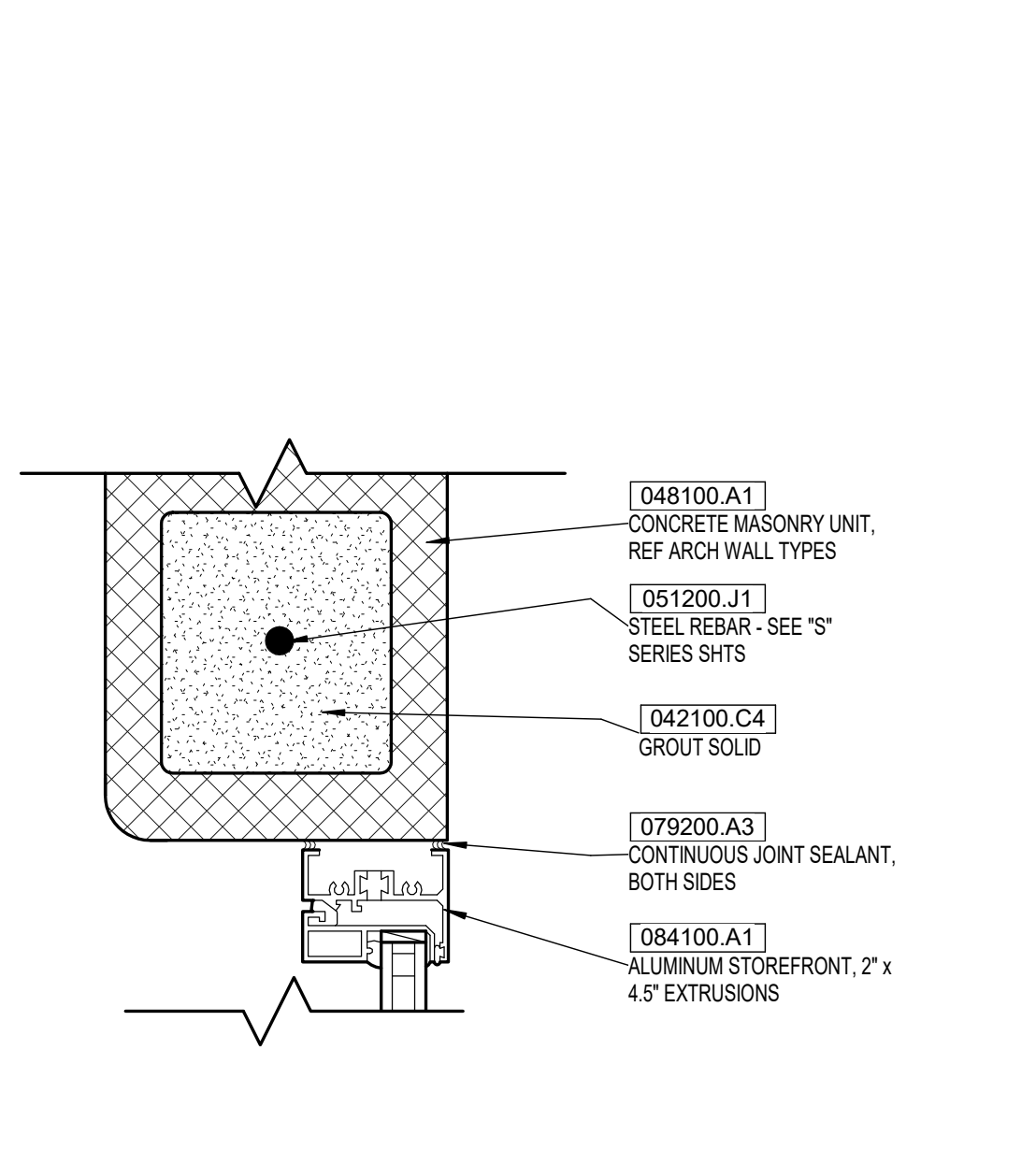
EXTERIOR JAMB - BRICK J2
SCALE: 3" = 1'-0"



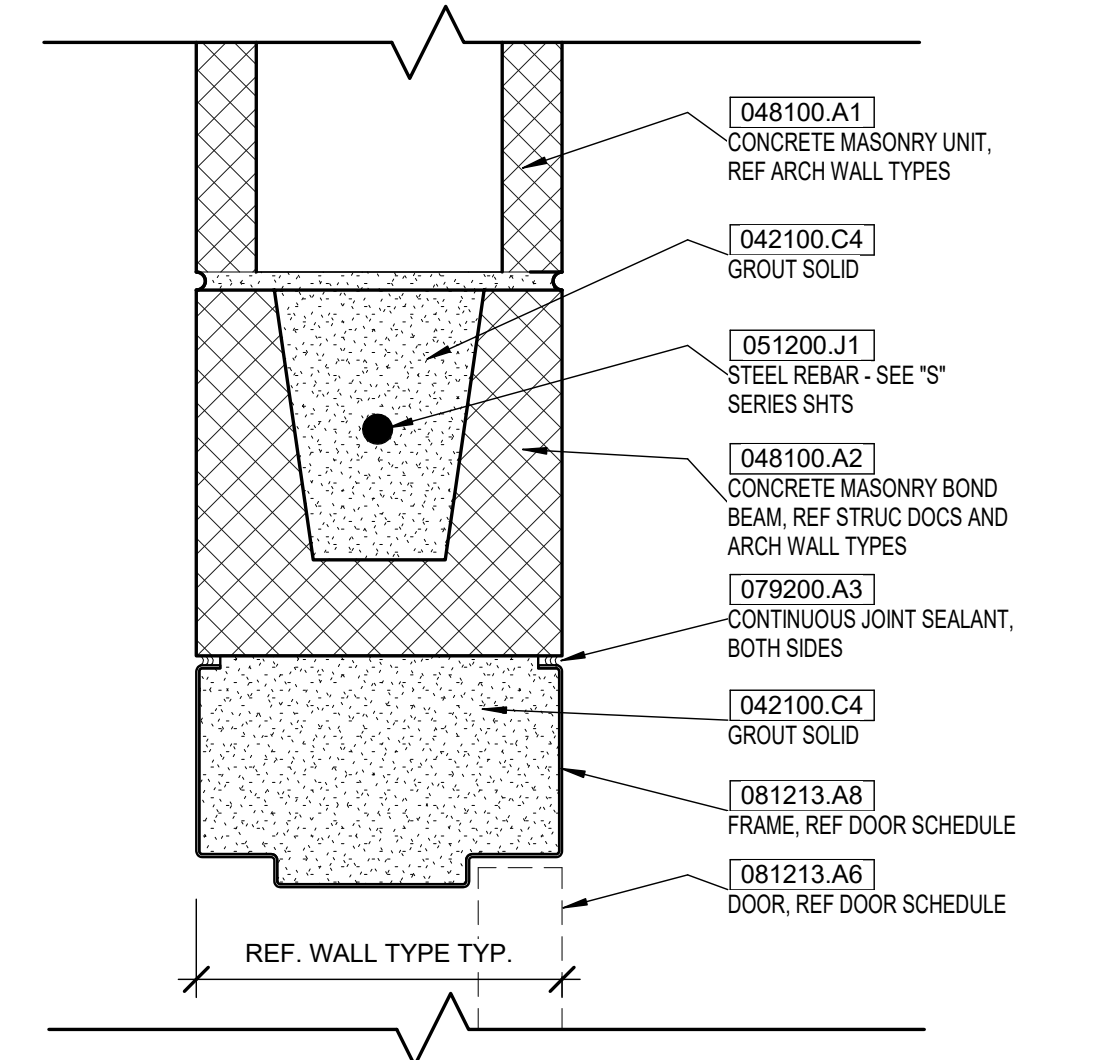
EXTERIOR HEAD - SF_BRICK H3
SCALE: 3" = 1'-0"



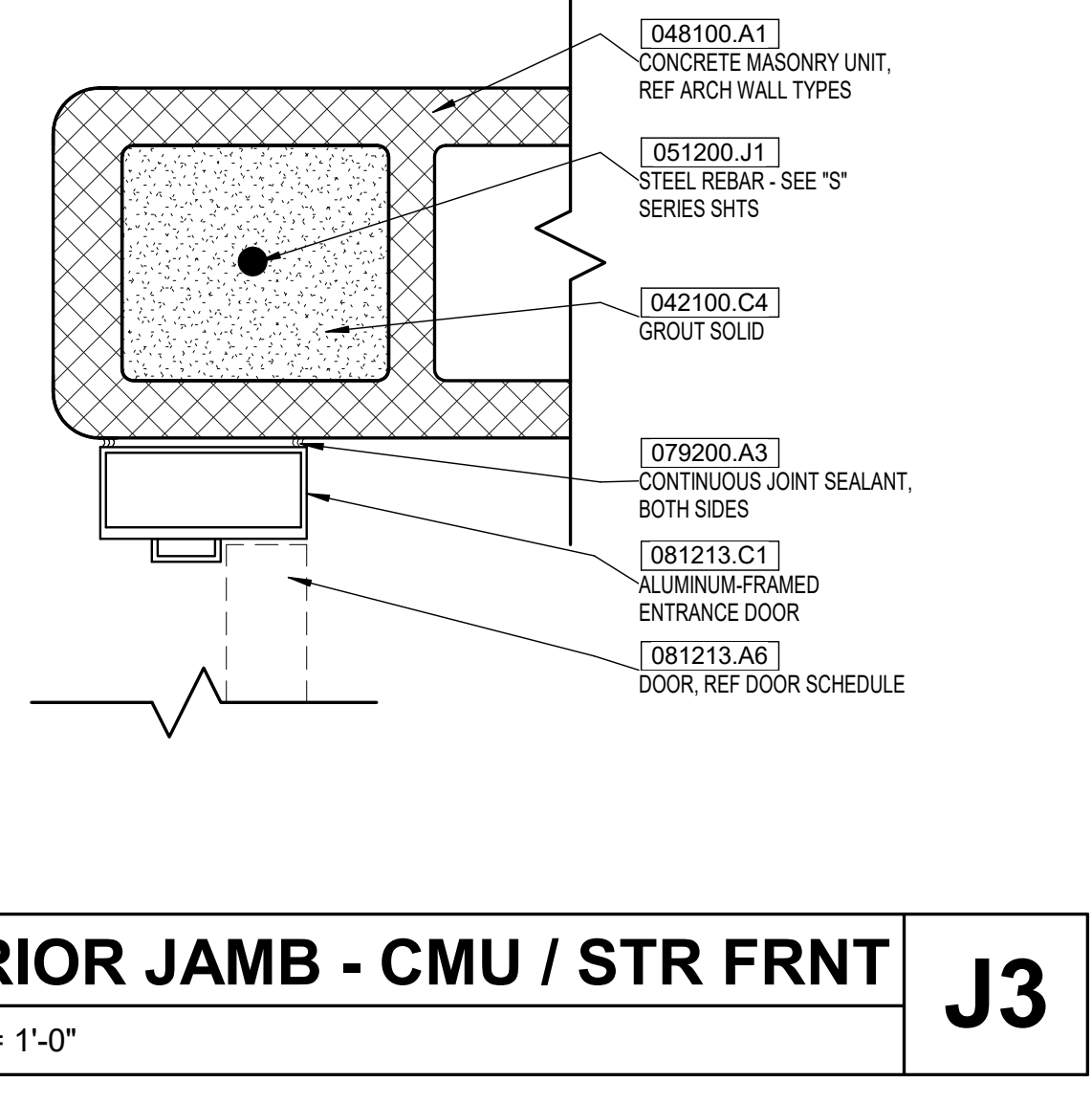
EXT. JAMB - SF_MTL STUD J6
SCALE: 3" = 1'-0"



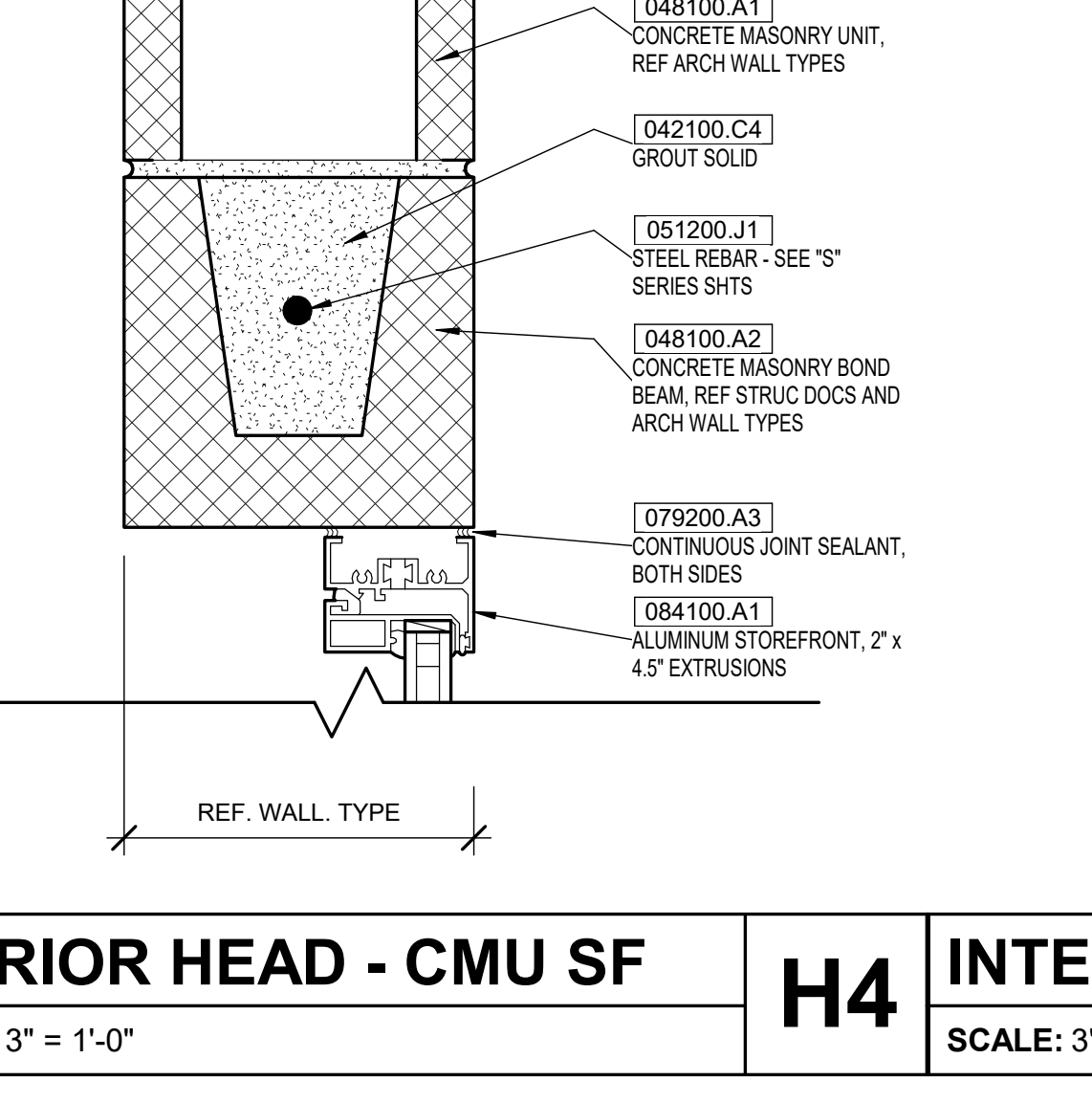
INTERIOR JAMB - WINDOW J8
SCALE: 3" = 1'-0"



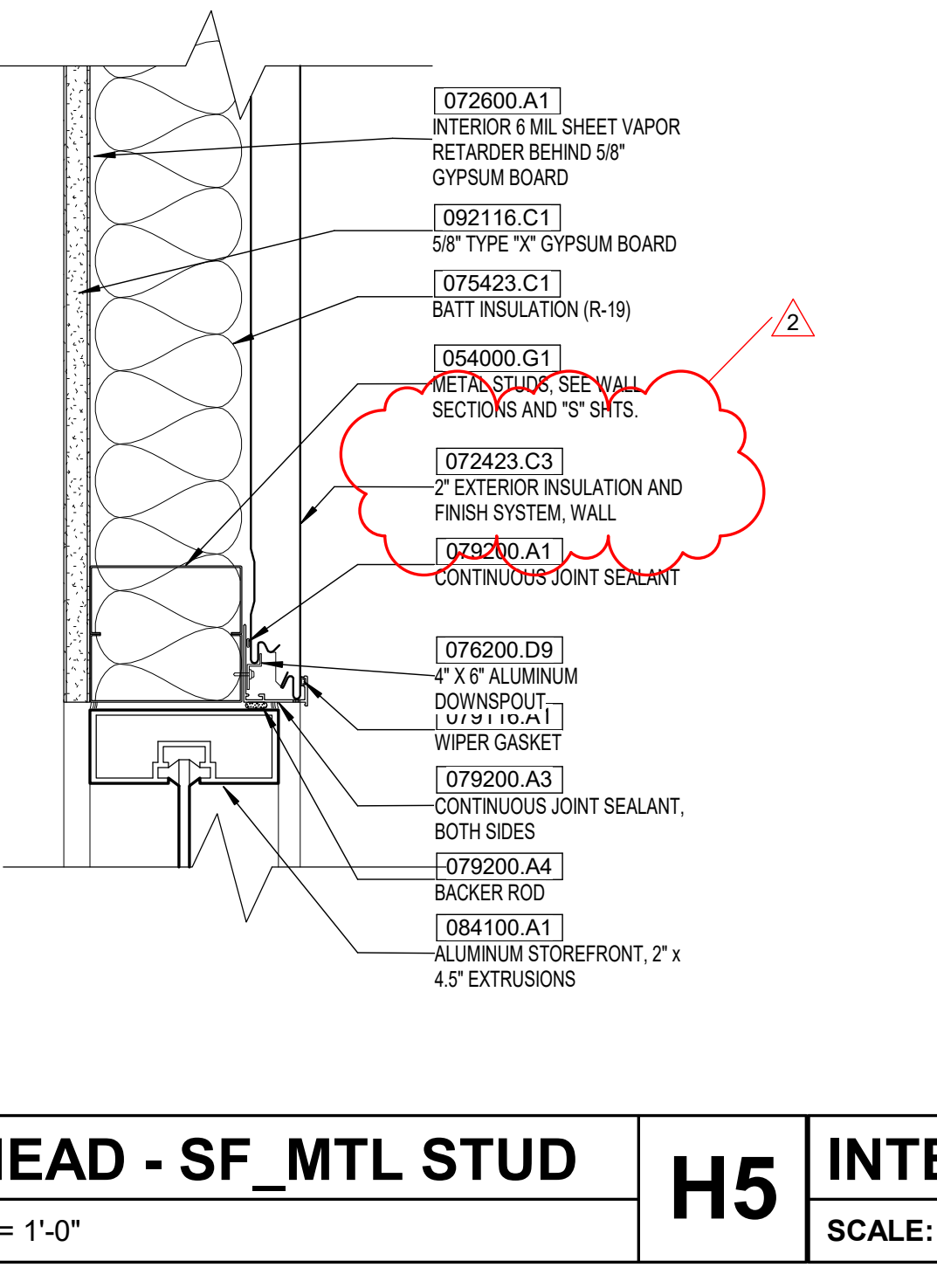
INTERIOR JAMB - CMU J1
SCALE: 3" = 1'-0"



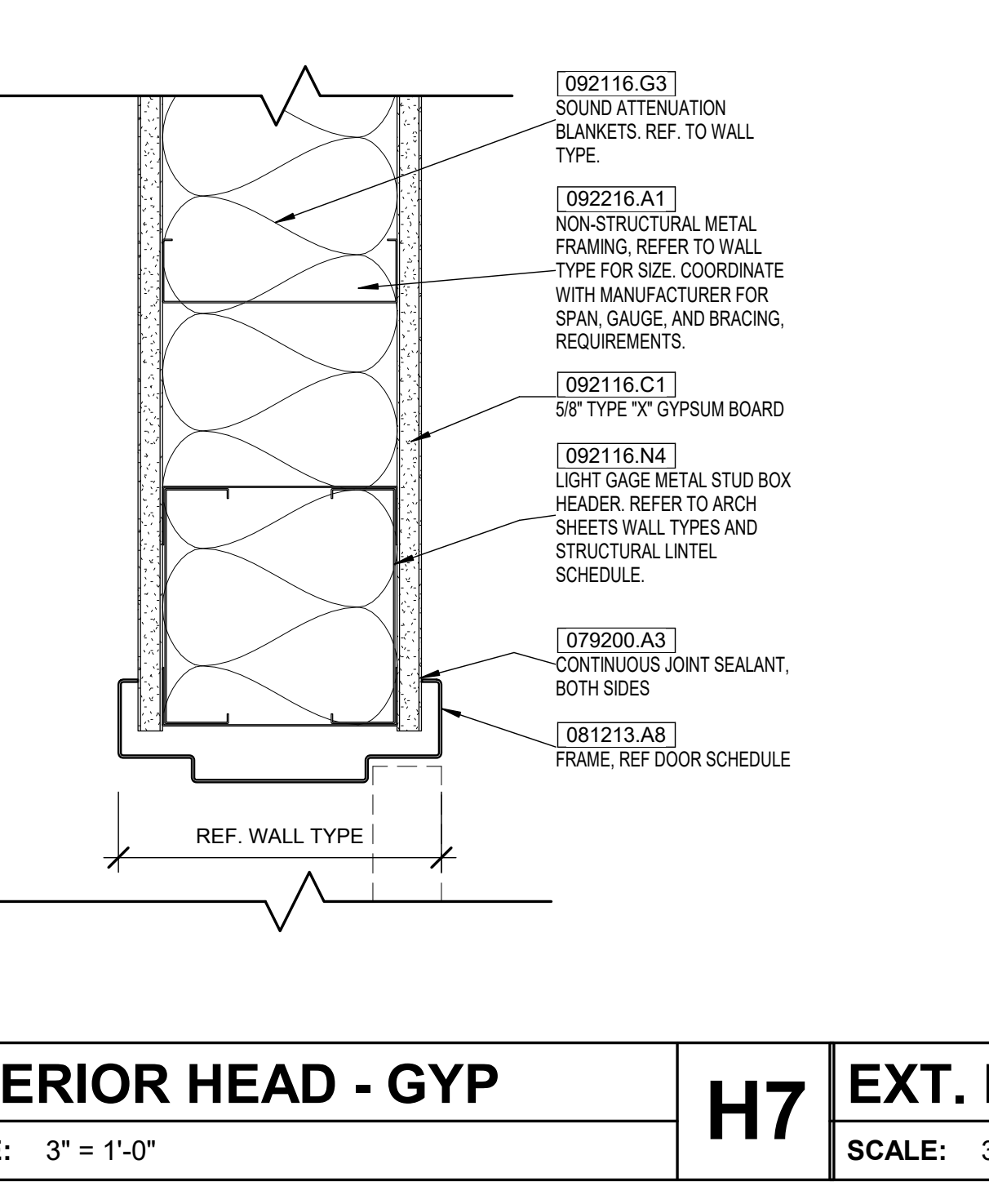
INTERIOR JAMB - CMU / STR FRNT J3
SCALE: 3" = 1'-0"



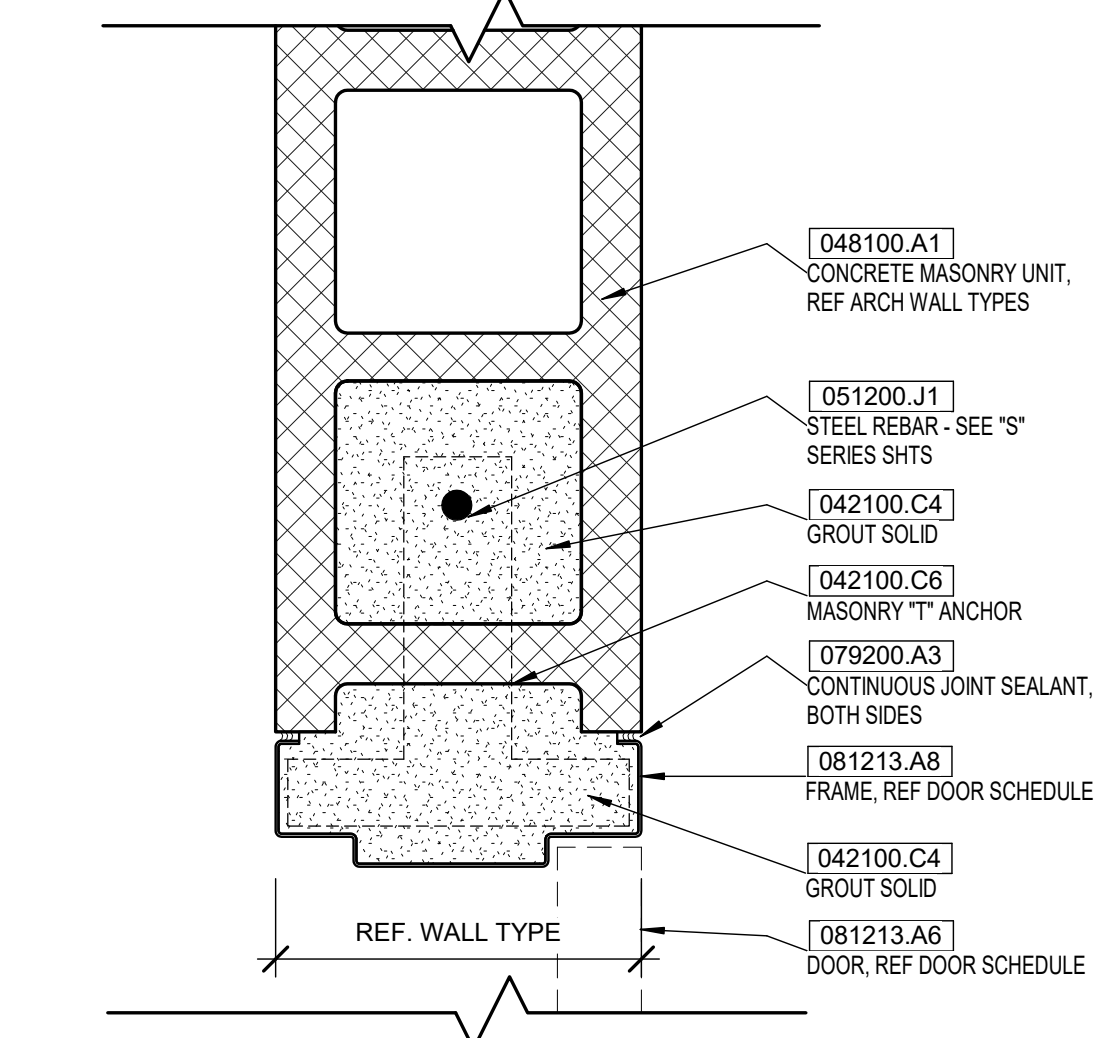
INTERIOR HEAD - CMU SF H4
SCALE: 3" = 1'-0"



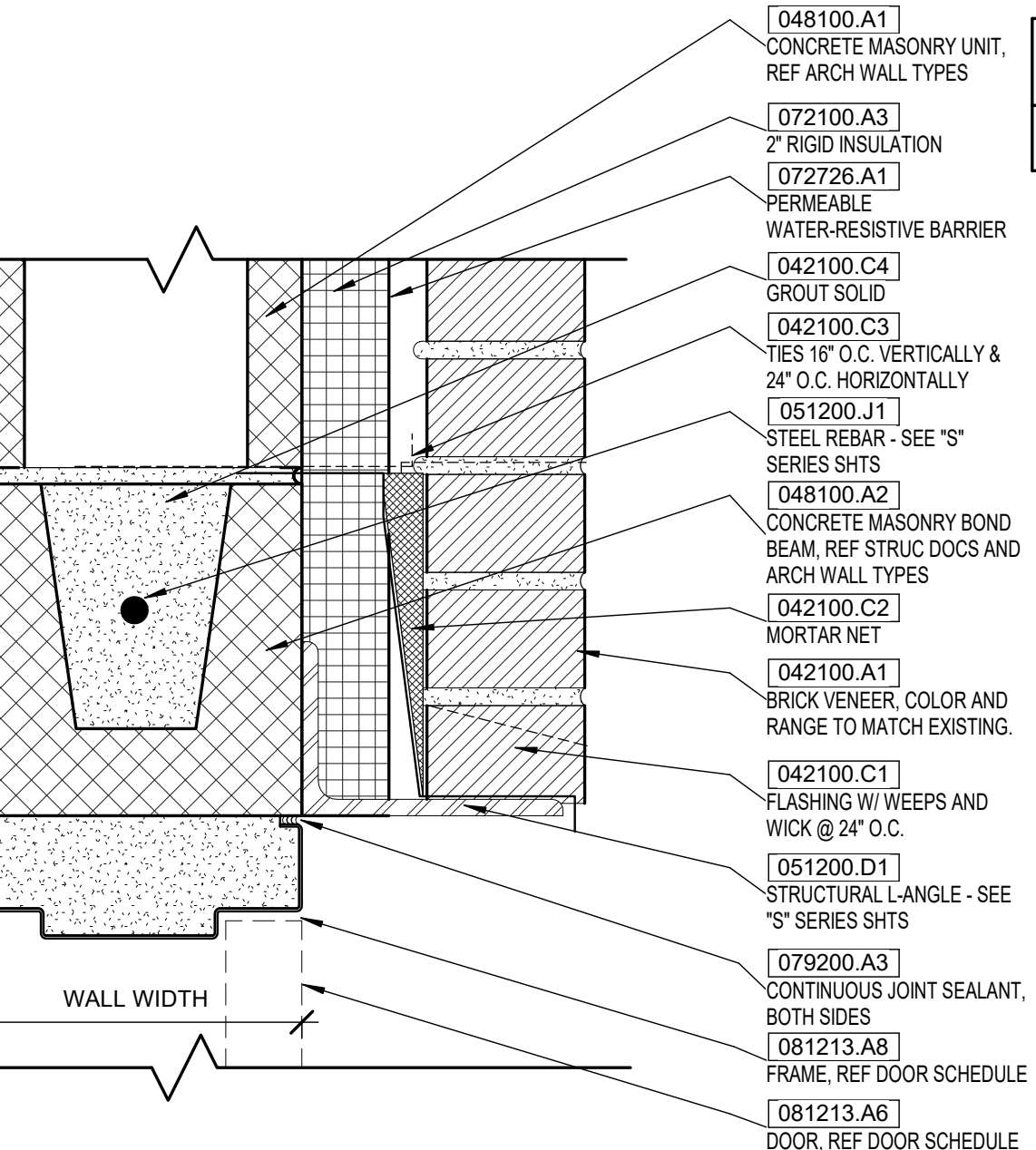
EXT. HEAD - SF_MTL STUD H5
SCALE: 3" = 1'-0"



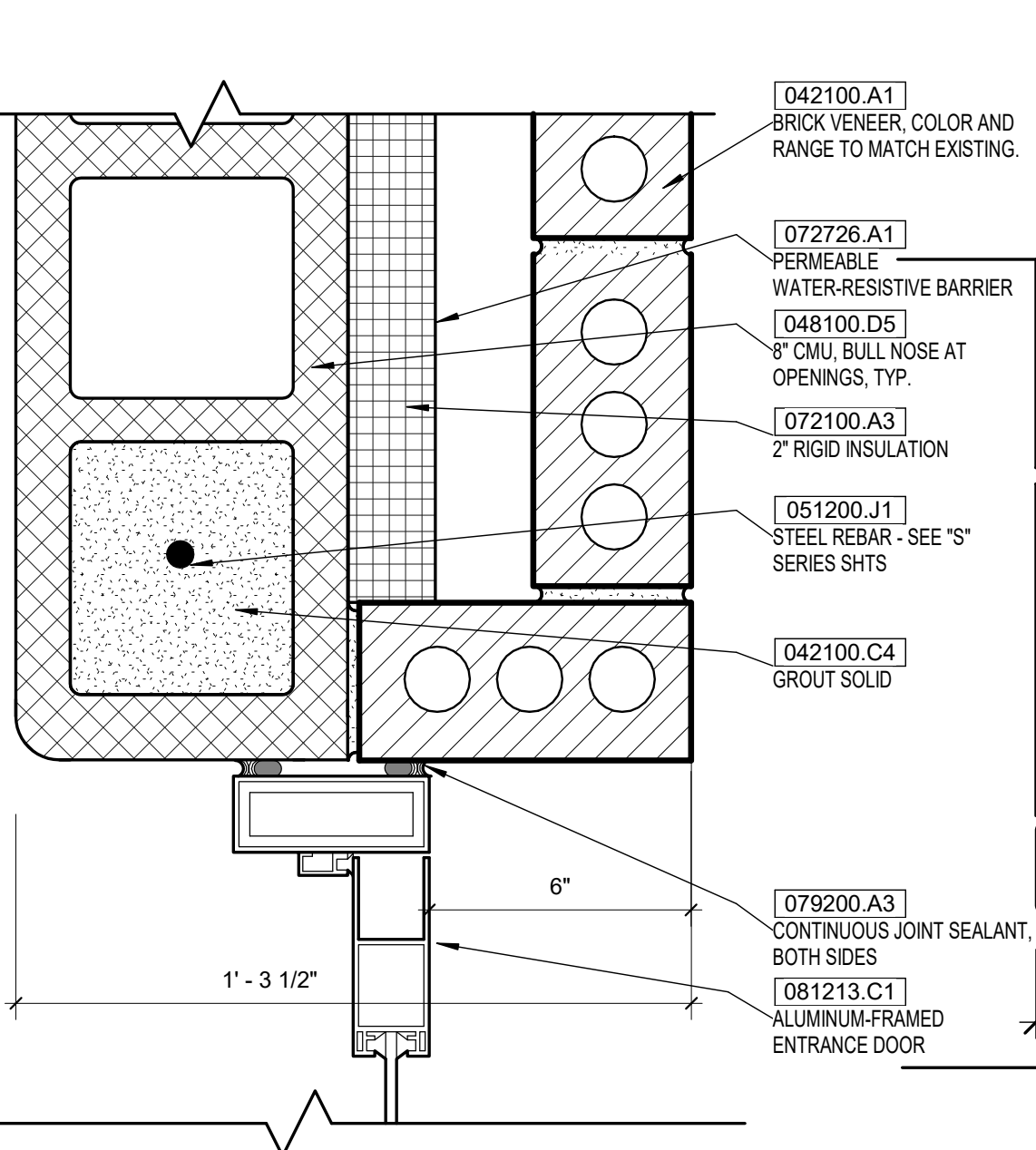
INTERIOR HEAD - GYP H7
SCALE: 3" = 1'-0"



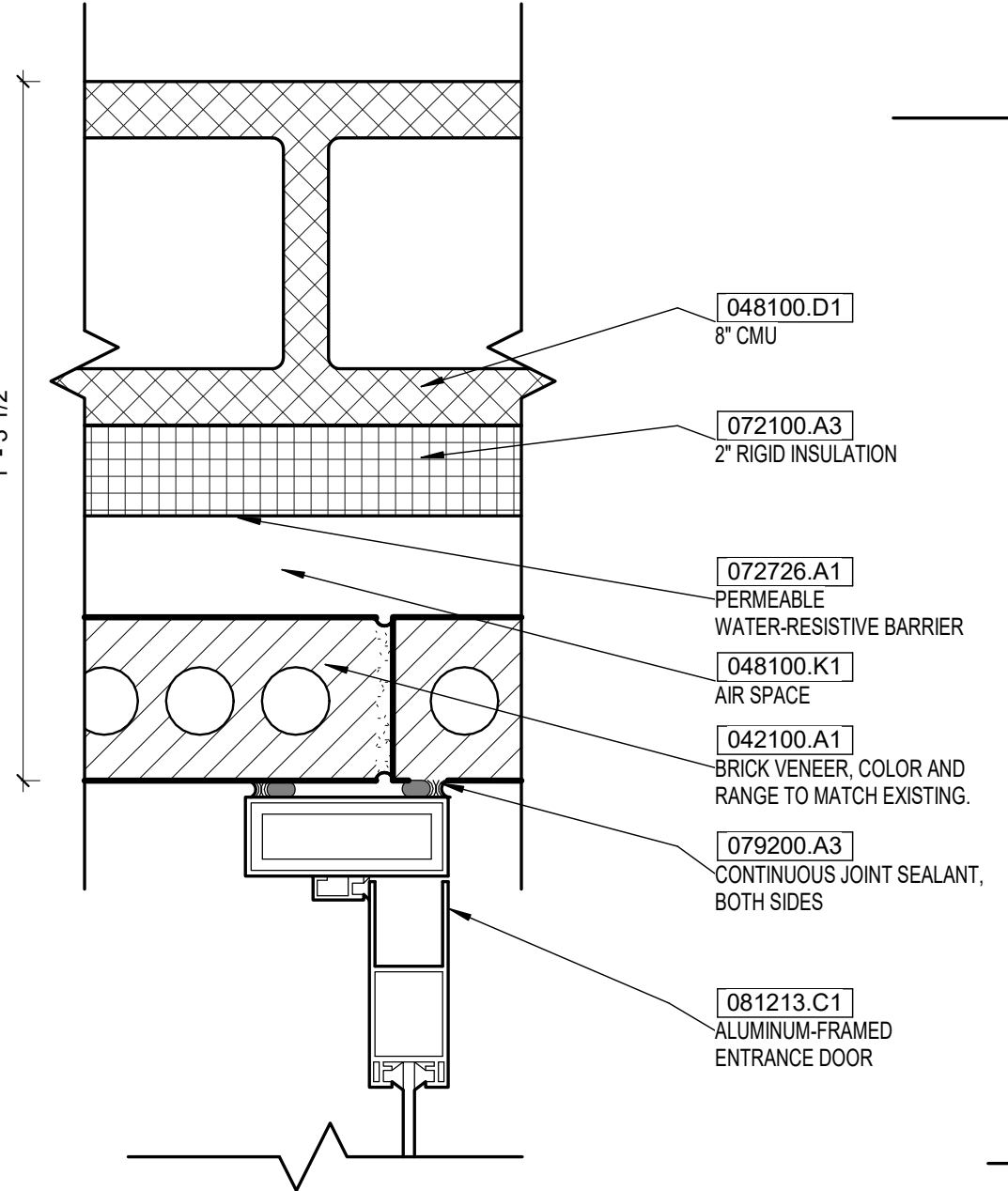
INTERIOR JAMB - CMU J1
SCALE: 3" = 1'-0"



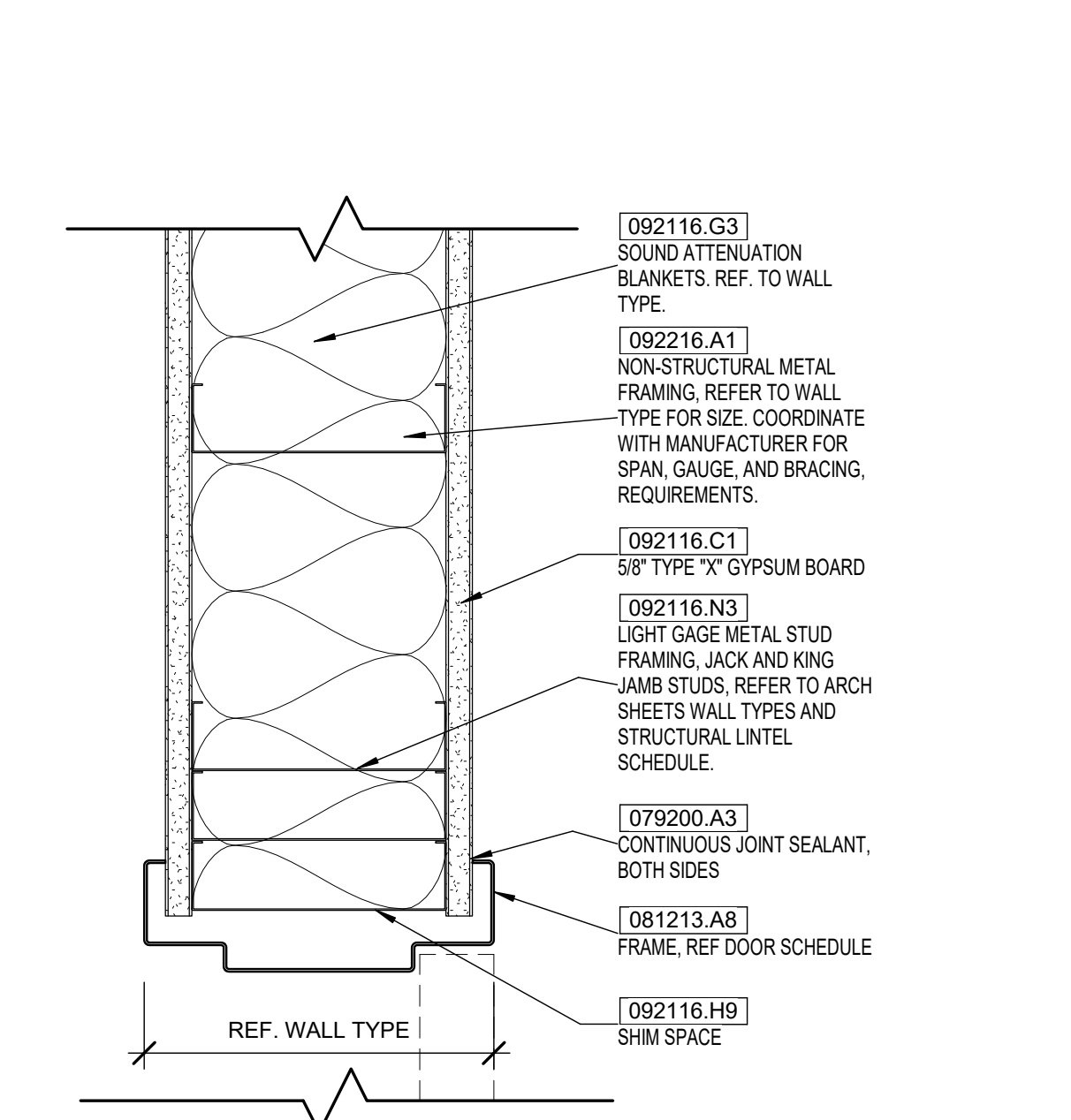
EXTERIOR HEAD - BRICK H2
SCALE: 3" = 1'-0"



EXTERIOR JAMB - SF_BRICK J5
SCALE: 3" = 1'-0"



EXTERIOR JAMB - SF_BRICK J5
SCALE: 3" = 1'-0"



INTERIOR JAMB - GYP J7
SCALE: 3" = 1'-0"