

## Avon Parks – Pickleball Park Addendum 03

DATE: Wednesday, February 25, 2026

PROJECT NAME: **Pickleball Park**

ATTACHMENTS: 012100 Allowance Specification, 047200 Cast Stone Masory, Door Hardware Information, Photos of Existing Gate, Sheet A1.6, Sheet S1-1

---

This Addendum forms part of the Contract Documents for the Project and contains clarifications and revisions to the Contract Documents.

The information contained herein modifies the original Bidding Documents and all prior Addenda as applicable. Requirements of the original Bidding Documents and previous Addenda remain in effect except as modified by this Addendum.

Bidders must acknowledge receipt of all Addendum on the Bid form. Failure to acknowledge receipt of this Addendum may subject Bidder to disqualification.

The extent of this addendum is as follows:

### **PROJECT SCHEDULE REVISIONS:**

**Project Schedule, Substantial Completion and Final Completion to be revised to state:**

- 1) **Substantial Completion of buildings, paving, courts, parking, sidewalks completed by 9/1/2026**
- 2) **Final Completion, seeding and site amenities by 1/1/2027**
- 3) **The Owner intends for the park to be open to patrons in early Fall 2026.**

### **STATEMENT ABOUT LIQUIDATED DAMAGES:**

**The Town of Avon may, at its discretion, consider waiving Liquidated Damages provided the Contractor is actively progressing the Work and making reasonable, continuous efforts toward completion.**

**If the Contractor fails to maintain progress for extended periods, including multiple days or weeks with little or no measurable advancement of the Work, the Town reserves the right to assess Liquidated Damages in accordance with the Contract Documents.**

## **PHONE, EMAIL, PRE-BID QUESTIONS, RESPONSES, AND CLARIFICATIONS**

- 1) **Question:** ABL-LITHONIA LIGHTING RSX1 LED P4 40K R5S MVOLT SPA DDBXD be approved as equal for the parking lot lights?  
**Response:** Yes, as long as the wireless controls and design intent for independent motion and dimming capabilities are provided.
- 2) **Question:** Can the fence line posts be 2.375" thick?  
**Response:** Yes
- 3) **Question:** What is the detail for the asphalt parking area? Would 6" #53 stone, 2.5" 19mm binder, & 1.5" 9.5mm surface be acceptable for the asphalt parking area?  
**Response:** Refer to addendum O2 for specifics
- 4) **Question:** Has the Bid Date been extended?  
**Response:** No
- 5) **Question:** Can the construction schedule be extended?  
**Response:** Refer to " Project Schedule Revisions" at the beginning of the addendum
- 6) **Question:** Can you provide additional information on the relocated gate? Manufacturer/model, specs, electrical/control requirements, etc.  
**Response:** See the attached photos of existing gate. No manufacturer, model or detail is known. No electrical controls are required.
- 7) **Question:** Can ELP VR7-CL-28L-QT- be approved as equal for the building lights?  
**Response:** Yes.
- 8) **Question:** On A6-1/1 – C5.8 Section, you call for the same 4" bullnose that is called for in detail 2. However, in detail 2, it is sitting on top of 8" CMU. In detail 1, it is sitting on top of 1" thin brick. This brick will not support a bullnose of that size. Could you please clarify the size of bullnose you would like used in Detail 1?  
**Response:** On A6-1/1 Provide thin stone support angle. Work with manufacturers to provide size that is compatible with thin stone applications and get shape that is close to drawn
- 9) **Question:** What is the thickness of the stone for the seating shown in sheet A5-1 detail 3?  
**Response:** 3-5/8"
- 10) **Question:** Sheet A6-1 detail 2. Section 2. 05 50 00 Galvanized trim cover. This detail shows the column to be attached to the footer. But S1-1 detail 8. Steel col pair detail. This detail shows the columns, tubes attached to the top of the masonry. Please clarify which detail to be used?  
**Response:** Refer to drawing updates for clarity
- 11) **Question:** Sheet A6-1 Detail 1-Section. 07 46 46: 2x8 Trim Board. Please clarify if the intention is install a 1" x 2" x 8' all around or to install a 1" x 8" x 8'. There is not a 2"x8"x8' Trim.  
**Response:** On Trim Board provide 2"x 8" fiber cement trim board, if manufacturer does not make 2" thick board provide thickest board they provide min. 1" max. 2" is required on wall.

- 12) Question:** Sheet A6-1, Detail 2-Section2 call note: Cast In place Concrete Footing refer to structural but there not detail in the structural. Please provide detail for reinforcement if any.
- Response:** Refer to schedule on sheet S1-1 for required reinforcement.
- 13) Question:** Does this need an AISC inspection?
- Response:** AISC Requirement can be waived but standards will need to comply. No need for third party inspector as add alternate at this time.
- 14) Question:** Per the specs there are very limited color choices in the enamel finishes. Should this be powder painted? Gives many more color options but adds cost to the door.
- Response:** Provide Powder coating in order to better match color and for longevity/protection.
- 15) Question:** Sheet A4-1 : where is the "surface mounted Avon Parks sign" in the elevation notes #10?
- Response:** Contractor to install. Provide 8K allowance for sign. Coordinate owner with new graphics, sign type, etc.
- 16) Question:** Masonry elevation height - is there an exterior elevation called out or are we counting block?
- Response:** See section A5-1 for relative height of bond beam. Still need to coordinate with GLULAM.
- 17) Question:** Detail 5 on A6-1 mentions BC plywood (sanded on one side) for roof sheathing. Is CDX plywood acceptable?
- Response:** CDX is acceptable and preferred for cost.
- 18) Question:** Exterior elevation notes state 2x8 trim board by fiber cement provider. Are 1" thick fiber cement trim boards acceptable?
- Response:** On Trim Board provide 2"x 8" fiber cement trim board, if manufacturer does not make 2" thick board provide thickest board they provide min. 1" max. 2" is required on wall.
- 19) Question:** 6x6 post connections are spec'd as a RGB WUB post bracket. Are ABU66Z brackets acceptable with a 5/8" anchor bolt?
- Response:** Keep as specified. Discuss post bid.
- 20) Question:** Sheet A4-1 elevation Notes Exterior call out number 10 Surface Mounted Avon Parks Sign. Would City provide this Sign?
- Response:** Contractor to install. Provide 8K allowance for sign. Coordinate owner with new graphics, sign type etc.
- 21) Question:** Restroom equipment schedule on A1.1 shows (4) accessories without a CF/CI indication. Are these accessories provided and installed by the owner?
- Response:** All accessories are to be supplied by contractor and installed by contractor
- 22) Question:** What thickness is the bent aluminum trim supposed to be? Detail 3 on A6.1 calls for .080 but detail 2 calls for .125. The exterior material finish schedule calls for .125 as well.
- Response:** .125"
- 23) Question:** Keynote 9 on A4.1 mentions an "enclosed bulletin board". Do you have a spec for this item?

**Response:** <https://outdoordisplaycases.com/collections/outdoor-enclosed-bulletin-boards/products/enclosed-outdoor-bulletin-boards-radius-edge-with-header-lights-multiple-doors>

**24) Question:** Keynote 10 on A4.1 mentions a surface mounted avon parks sign but no sign is shown on the elevations. Is this a sign provided by the owner that we install or will they install?

**Response:** Contractor to install. Provide 8K allowance for sign. Coordinate owner with new graphics, sign type etc.

**25) Question:** Detail 1/A6.1 Cuts through the storage room of this building. It notes an 8" Burnished CMU (CUV-5) for all restroom walls (this area is a storage room).

Detail 1/A1-1 shows C-1 in the storage room which is clear sealer-as a wall finish?

Please confirm which is the intent: All interior CMU walls to be Burnished for the entire building – storage and restrooms. Use standard grey CMU with clear sealer inside the storage room only, and use Burnished CMU on all inside walls of the restrooms. If the intent is #2, please also confirm a standard control joint to be used on the north & south walls to make a clean transition between the two different finishes on the CMU. This would make a visible CJ in the burnished thin veneer on the exterior as well.

**Response:** Standard grey CMU on Storage room, burnished for restroom walls. Include a CJ on exterior. Joint color to match grout color

### **ISSUED SPECIFICATION REVISIONS**

- 1) **Table of Content:**
  - a. **Edit to Add 012100 Allowance Section**
- 2) **012100 Allowance**
  - a. **Added new specifications and included \$35,000 allowance to be included within the bid**
- 3) **047200 Cast Stone Masonry**
  - a. **Added new specifications for Cast Stone Masonry.**

### **ISSUED DRAWING REVISIONS**

- 1) **A1.6**
  - a) **Revised for Clarifications**
- 2) **S1-1**
  - a) **Revised for Clarifications**

**Attachments: 012100 Allowance Specification, 047200 Cast Stone Masory, Door Hardware Information, Photos of Existing Gate, Sheet A1.6, Sheet S1-1**

**END OF ADDENDUM #3**

# Photographs of Existing Gate to be Relocated

No model or manufacturer's information are visible. No details of as built are available.






146959 X-130764 Version 1

HARDWARE GROUP NO. 1

For use on Door #(s):

002, 001

Provide each OPENING with the following:






| QTY |    | DESCRIPTION                             | CATALOG NUMBER                             |  | FINISH | MFR |
|-----|----|---|--|--|--------|-----|
| 1   | EA | CONT. HINGE                             | 224XY EPT                                  |   | 628    | IVE |
| 1   | EA | POWER TRANSFER                          | EPT10                                      |   | 689    | VON |
| 1   | EA | ELEC MORTISE LOCK (W/<br>DBOLT MONITOR) | LV9492HDEU 03B L583-363 RX<br>DM 12/24 VDC |   | 626    | SCH |
| 1   | EA | PERMANENT CORE                          | MATCH OWNER'S SYSTEM                       |   | 626    | BES |
| 1   | EA | OUTSIDE OCCUPIED<br>INDICATOR           | 47804352                                   |  | 626    | SCH |
| 1   | EA | SURFACE CLOSER (W/<br>SPRING STOP & HO) | 4040XP SHCUSH                              |   | 689    | LCN |
| 1   | EA | KICK PLATE                              | 8400 10"H X WIDTH AS REQ'D B-<br>CS        |   | 630    | IVE |
| 1   | EA | WEATHERSTRIPPING                        | 429AA-S                                    |   | AA     | ZER |
| 1   | EA | DOOR SWEEP, BRUSH W/<br>DRIP            | 8198AA                                     |   | AA     | ZER |
| 1   | EA | THRESHOLD, 1/2"                         | 655A                                       |   | A      | ZER |
| 1   | EA | POWER SUPPLY                            | SHARED WITH ADJACENT DOOR                  |  |        | B/O |
| 1   | EA | DOOR CONTACT                            | 679-05HM                                   |  | BLK    | SCE |

ELEC LOCK CONTROLLED BY ACCESS CONTROL SYSTEM SCHEDULE. WHEN UNLOCKED AND VACANT, TURNING THUMBTURN ON INSIDE WILL LOCK OUTSIDE OF DOOR AND CHANGE OUTSIDE INDICATOR TO "OCCUPIED". USING INSIDE LEVER RETRACTS BOTH DEADBOLT AND LATCH FOR ONE MOTION EGRESS, REVERTS INDICATOR BACK TO "VACANT" AND LOCK RETURNS BACK TO SCHEDULED STATUS (LOCKED OR UNLOCKED. EMERGENCY ENTRY VIA KEY.

HARDWARE GROUP NO. 2

For use on Door #(s):  
003

Provide each OPENING with the following:

| QTY |    | DESCRIPTION                             | CATALOG NUMBER                      |   | FINISH | MFR |
|-----|----|---|-------------------------------------|---|--------|-----|
| 1   | EA | CONT. HINGE                             | 224XY EPT                           |  | 628    | IVE |
| 1   | EA | POWER TRANSFER                          | EPT10                               |  | 689    | VON |
| 1   | EA | ELEC LOCK                               | LV9092HDEU 03B RX 12/24 VDC         |  | 626    | SCH |
| 1   | EA | PERMANENT CORE                          | MATCH OWNER'S SYSTEM                |  | 626    | BES |
| 1   | EA | SURFACE CLOSER (W/<br>SPRING STOP & HO) | 4040XP SHCUSH                       |  | 689    | LCN |
| 1   | EA | KICK PLATE                              | 8400 10"H X WIDTH AS REQ'D B-<br>CS |  | 630    | IVE |
| 1   | EA | WEATHERSTRIPPING                        | 429AA-S                             |  | AA     | ZER |
| 1   | EA | DOOR SWEEP, BRUSH W/<br>DRIP            | 8198AA                              |  | AA     | ZER |
| 1   | EA | THRESHOLD, 1/2"                         | 655A                                |  | A      | ZER |
| 1   | EA | CREDENTIAL READER                       | BY ACCESS CONTROL<br>INTEGRATOR     |   |        | B/O |
| 1   | EA | DOOR CONTACT                            | 679-05HM                            |  | BLK    | SCE |
| 1   | EA | POWER SUPPLY                            | PS902 900-4R 120/240 VAC            |  | LGR    | SCE |

DOOR NORMALLY CLOSED AND LOCKED. PRESENTING VALID CREDENTIAL TO READER WILL UNLOCK OUTSIDE LEVER, ALLOWING ACCESS. DOOR REMAINS LOCKED WITH LOSS OF POWER. FREE EGRESS AT ALL TIMES.

SECTION 01 2100 – ALLOWANCES

PART 1 GENERAL

1.1 DESCRIPTION

- A. Include in the contract sum the allowances stated in this Section.
- B. Should the net cost of construction changes be more than the specified amount of the Allowance, the contract sum will be adjusted by Change Order in accordance with the General Conditions. No Work in excess of the Allowance will be permitted except by Change Order. Should the net cost be less than the specified amount of the allowance, the balance will be deducted by Change Order before final payment is made.

1.2 TOTAL FOR ALLOWANCES

- A. The sum of Allowances required by this Contract is Thirty-Five Thousand Dollars (\$35,000).

1.3 ALLOWANCE FOR CONTINGENCIES

- A. Include in the contract sum the amount of Thirty-Five Thousand Dollars (\$35,000) to cover the cost of additional labor and materials for unforeseen conditions, changes in work, extra work, and contingent activities within the scope of the Contract as directed in writing by Written Order or Field Order. The Written Order will include a description of the Work and a method for determining the cost of such Work.
- B. The value of the directed Work under this allowance will be determined by one or more of the methods authorized in the contract documents which will be specified in the Written Order or Field Order.

END OF SECTION

**SECTION 04 72 00  
CAST STONE MASONRY**

**PART 1 GENERAL**

**1.01 SECTION INCLUDES**

- A. Architectural cast stone.
- B. Units required are indicated on drawings as "cast stone".

**1.02 RELATED REQUIREMENTS**

- A. Section 04 05 11 - Masonry Mortaring and Grouting: Mortar for setting cast stone.
- B. Section 04 20 00 - Unit Masonry: Installation of cast stone in conjunction with masonry.
- C. Section 07 92 00 - Joint Sealants: Sealing joints indicated to be left open for sealant.

**1.03 REFERENCE STANDARDS**

- A. ACI CODE-318 - Building Code Requirements for Structural Concrete and Commentary; 2019 (Reapproved 2022).
- B. ASTM A615/A615M - Standard Specification for Deformed and Plain Carbon-Steel Bars for Concrete Reinforcement; 2025.
- C. ASTM A767/A767M - Standard Specification for Zinc-Coated (Galvanized) Steel Bars for Concrete Reinforcement; 2024.
- D. ASTM A884/A884M - Standard Specification for Epoxy-Coated Steel Wire and Welded Wire Reinforcement; 2025.
- E. ASTM A1064/A1064M - Standard Specification for Carbon-Steel Wire and Welded Wire Reinforcement, Plain and Deformed, for Concrete; 2024.
- F. ASTM C33/C33M - Standard Specification for Concrete Aggregates; 2024a.
- G. ASTM C150/C150M - Standard Specification for Portland Cement; 2024.
- H. ASTM C270 - Standard Specification for Mortar for Unit Masonry; 2025a.
- I. ASTM C494/C494M - Standard Specification for Chemical Admixtures for Concrete; 2024.
- J. ASTM C1364 - Standard Specification for Architectural Cast Stone; 2025.

**1.04 SUBMITTALS**

- A. See Section 01 30 00 - Administrative Requirements, for submittal procedures.
- B. Shop Drawings: Include elevations, dimensions, layouts, profiles, cross sections, reinforcement, exposed faces, arrangement of joints, anchoring methods, anchors, and piece numbers.
- C. Mortar Color Selection Samples.
- D. Verification Samples: Pieces of actual cast stone components not less than 6 inches square, illustrating range of color and texture to be anticipated in components furnished for the project.

**1.05 DELIVERY, STORAGE, AND HANDLING**

- A. Deliver cast stone components secured to shipping pallets and protected from damage and discoloration. Protect corners from damage.
- B. Number each piece individually to match shop drawings and schedule.
- C. Store cast stone components and installation materials in accordance with manufacturer's instructions.
- D. Store cast stone components on pallets with nonstaining, waterproof covers. Ventilate under covers to prevent condensation. Prevent contact with dirt.

- E. Protect cast stone components during handling and installation to prevent chipping, cracking, or other damage.
- F. Store mortar materials where contamination can be avoided.
- G. Schedule and coordinate production and delivery of cast stone components with unit masonry work to optimize on-site inventory and to avoid delaying the work.

## **PART 2 PRODUCTS**

### **2.01 MANUFACTURERS**

### **2.02 ARCHITECTURAL CAST STONE**

- A. Cast Stone: Architectural concrete product manufactured to simulate appearance of natural stone, complying with ASTM C1364.
  - 1. Compressive Strength: As specified in ASTM C1364; calculate strength of pieces to be field cut at 80 percent of uncut piece.
  - 2. Freeze-Thaw Resistance: Demonstrated by laboratory testing in accordance with ASTM C1364.
  - 3. Surface Texture: Fine grained texture, with no bugholes, air voids, or other surface blemishes visible from distance of 20 feet.
  - 4. Color: Match CUV-1.
  - 5. Remove cement film from exposed surfaces before packaging for shipment.
- B. Shapes: Provide shapes indicated on drawings.
  - 1. Variation from Any Dimension, Including Bow, Camber, and Twist: Maximum of plus/minus 1/8 inch or length divided by 360, whichever is greater, but not more than 1/4 inch.
  - 2. Unless otherwise indicated on drawings, provide:
    - a. Wash or slope of 1:12 on exterior horizontal surfaces.
    - b. Drips on projecting components, wherever possible.
    - c. Raised fillets at back of sills and at ends to be built in.
- C. Reinforcement: Provide reinforcement as required to withstand handling and structural stresses; comply with ACI CODE-318.

### **2.03 MATERIALS**

- A. Portland Cement: ASTM C150/C150M.
  - 1. For Units: Type I, white or gray as required to match Architect 's sample.
  - 2. For Mortar: Type I or II, except Type III may be used in cold weather.
- B. Coarse Aggregate: ASTM C33/C33M, except for gradation; granite, quartz, or limestone.
- C. Fine Aggregate: ASTM C33/C33M, except for gradation; natural or manufactured sands.
- D. Admixtures: ASTM C494/C494M.
- E. Water: Potable.
- F. Reinforcing Bars: ASTM A615/A615M, Grade 40 (40,000 psi), deformed bars, galvanized.
  - 1. Galvanized in accordance with ASTM A767/A767M, Class I.
- G. Steel Welded Wire Reinforcement: ASTM A1064/A1064M, galvanized or ASTM A884/A884M, epoxy coated.
- H. Embedded Anchors, Dowels, and Inserts: Type 304 stainless steel, of type and size as required for conditions.
- I. Mortar: Portland cement-lime, as specified in Section 04 05 11 ; do not use masonry cement.
- J. Cleaner: General-purpose cleaner designed for removing mortar and grout stains, efflorescence, and other construction stains from new masonry surfaces without discoloring or

damaging masonry surfaces; approved for intended use by cast stone manufacturer and by cleaner manufacturer for use on cast stone and adjacent masonry materials.

### **PART 3 EXECUTION**

#### **3.01 INSTALLATION**

- A. Install cast stone components in conjunction with masonry, complying with requirements of Section 04 20 00.
- B. Mechanically anchor cast stone units indicated; set remainder in mortar.
- C. Setting:
  - 1. Drench cast stone components with clear, running water immediately before installation.
  - 2. Set units in a full bed of mortar unless otherwise indicated.
  - 3. Fill vertical joints with mortar.
  - 4. Fill dowel holes and anchor slots completely with mortar or non-shrink grout.

#### **3.02 TOLERANCES**

- A. Joints: Make all joints 3/8 inch, except as otherwise detailed.
  - 1. Rake mortar joints 3/4 inch for pointing.
  - 2. Remove excess mortar from face of stone before pointing joints.
  - 3. Point joints with mortar in layers 3/8 inch thick and tool to a slight concave profile.
  - 4. Leave the following joints open for sealant:
    - a. Head joints in top courses, including copings, parapets, cornices, sills, and steps.
    - b. Joints in projecting units.
    - c. Joints between rigidly anchored units, including soffits, panels, and column covers.
    - d. Joints below lugged sills and stair treads.
    - e. Joints below ledge and relieving angles.
    - f. Joints labeled "expansion joint".

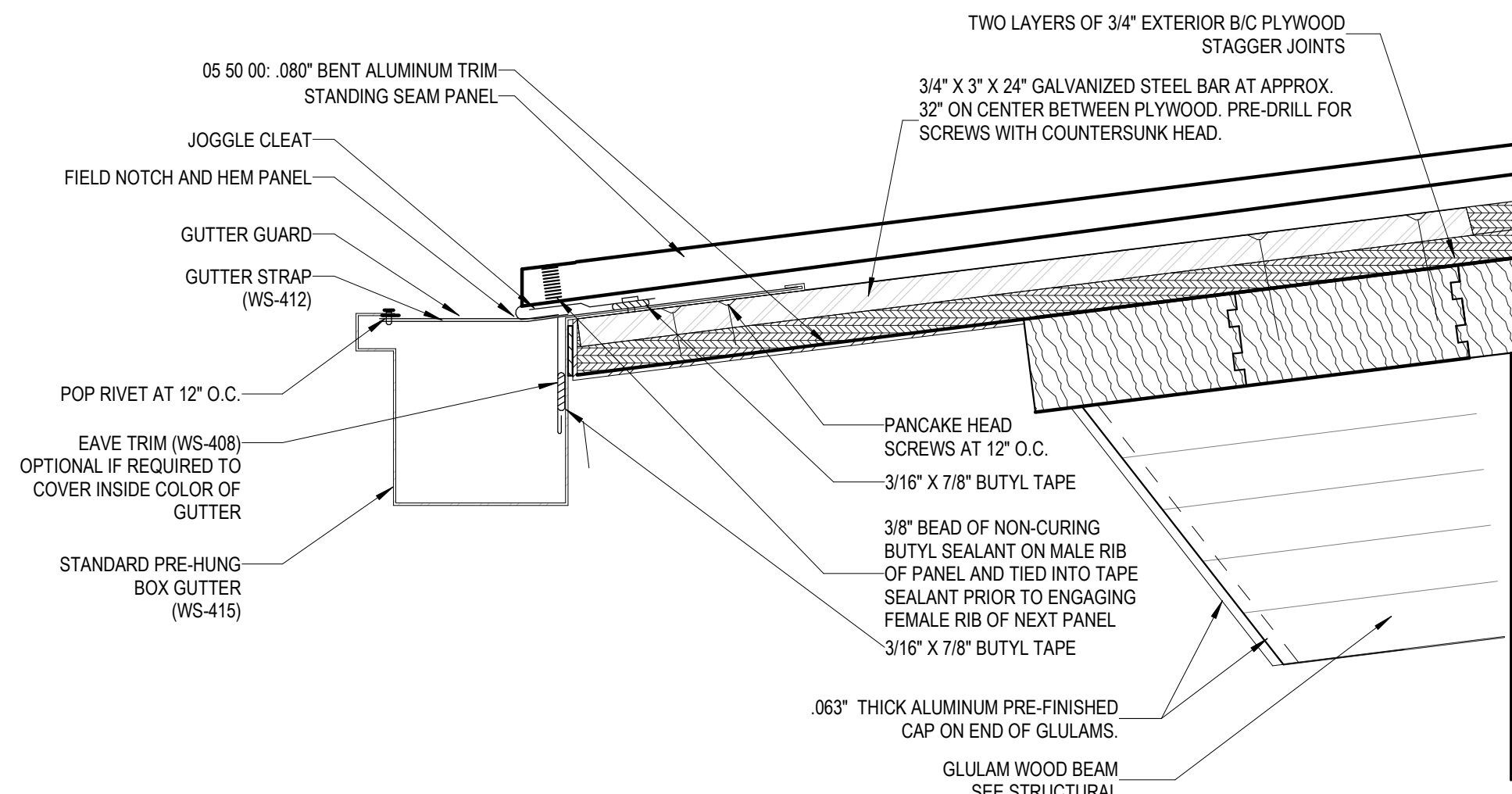
#### **3.03 REPAIR**

- A. Repair chips and other surface damage noticeable when viewed in direct daylight at 20 feet.
- B. Repair with matching touch-up material provided by the manufacturer and in accordance with manufacturer's instructions.
- C. Repair methods and results subject to Architect 's approval.

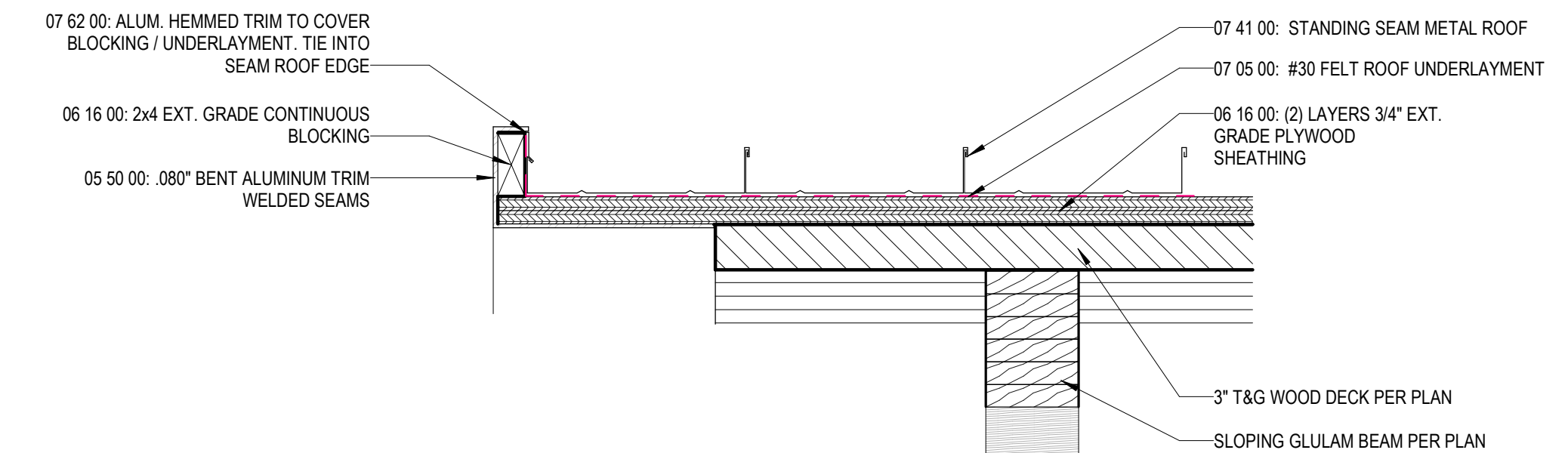
#### **3.04 CLEANING**

- A. Clean completed exposed cast stone after mortar is thoroughly set and cured.
  - 1. Wet surfaces with water before applying cleaner.
  - 2. Apply cleaner to cast stone in accordance with manufacturer's instructions.
  - 3. Remove cleaner promptly by rinsing thoroughly with clear water.
  - 4. Do not use acidic cleaners.

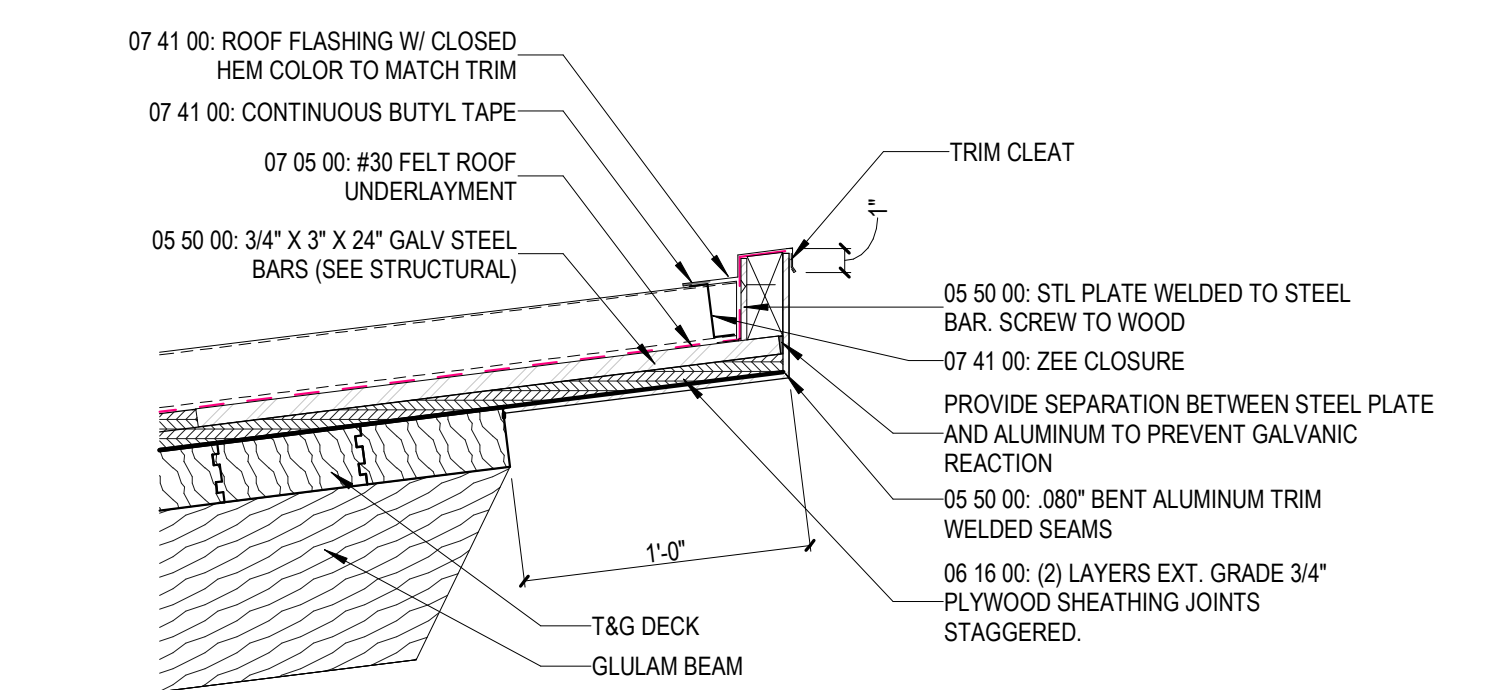
**END OF SECTION**



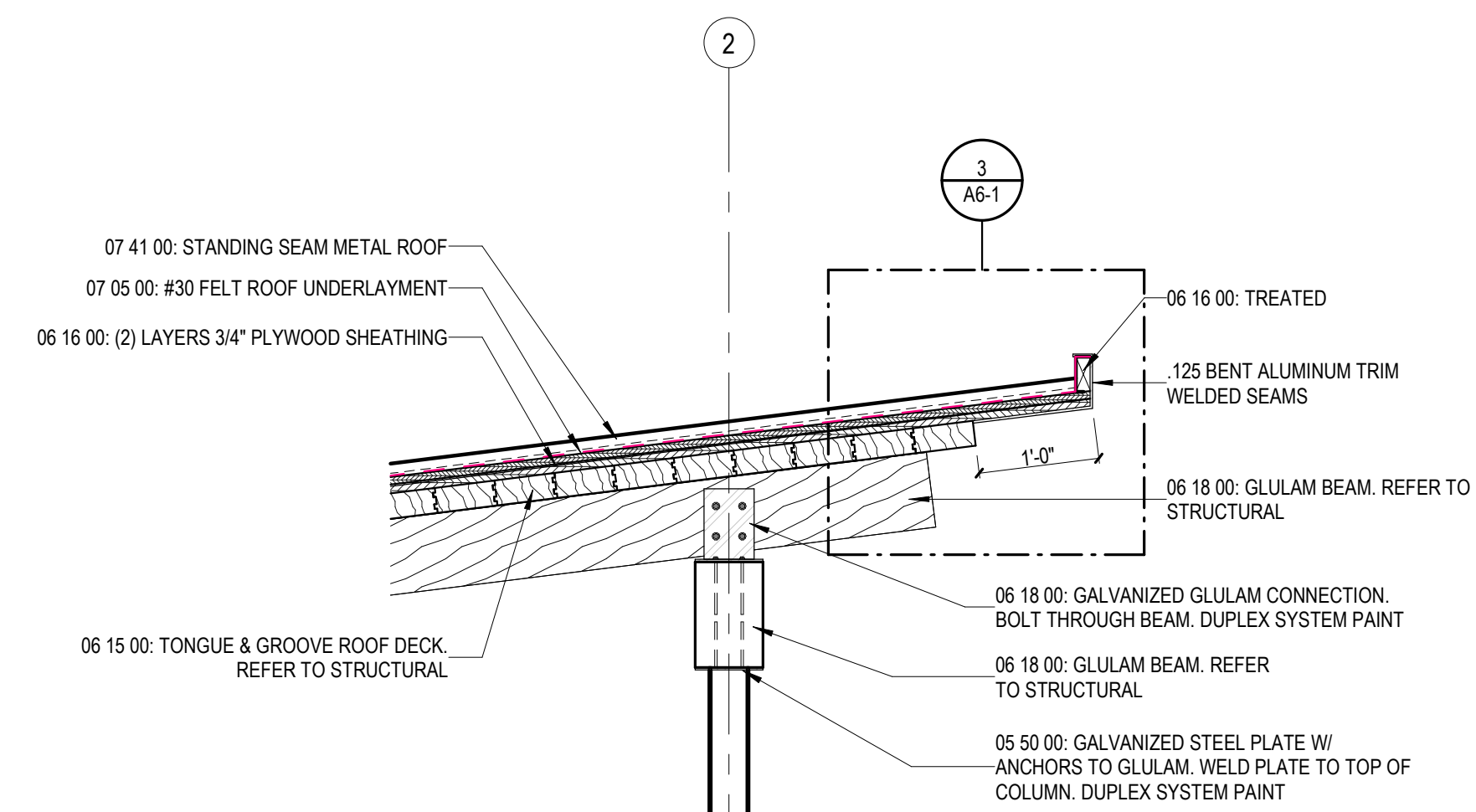
5 C5.8 SECTION - Callout 1  
SCALE: 3" = 1'-0"



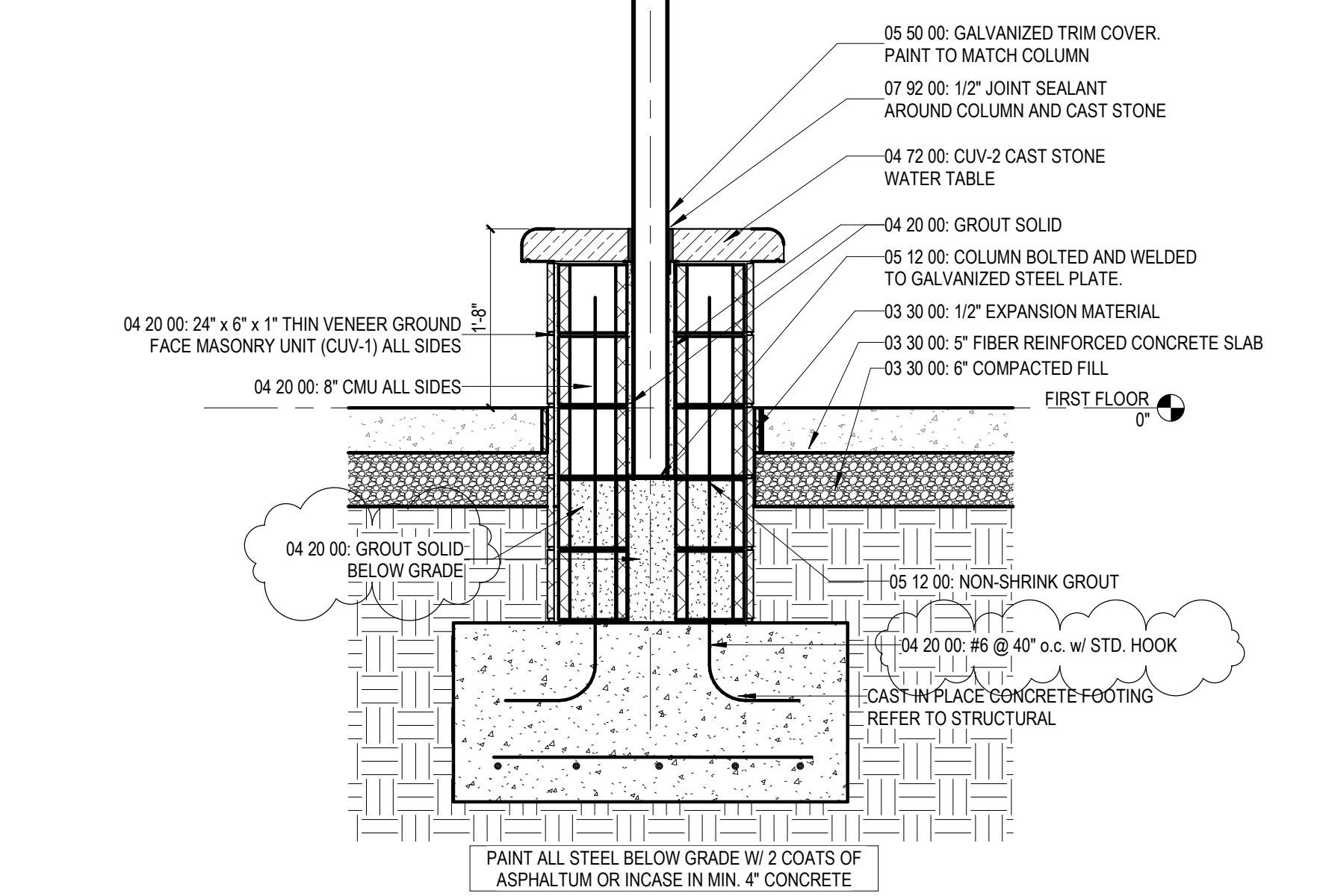
4 ROOF RAKE DETAIL  
SCALE: 1 1/2" = 1'-0"



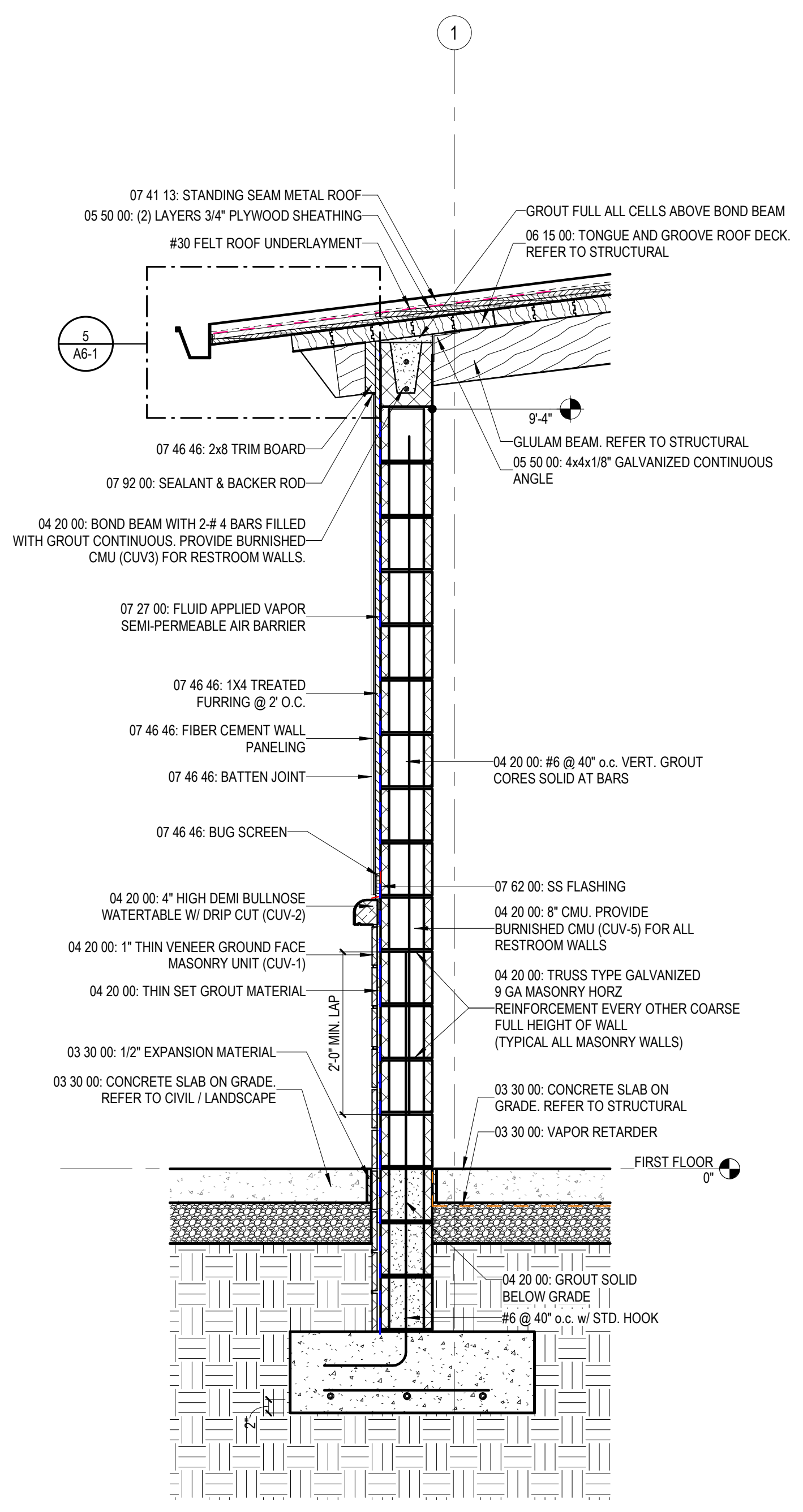
3 OVERHANG SECTION - Callout 1  
SCALE: 1 1/2" = 1'-0"



2 OVERHANG SECTION  
SCALE: 3/4" = 1'-0"



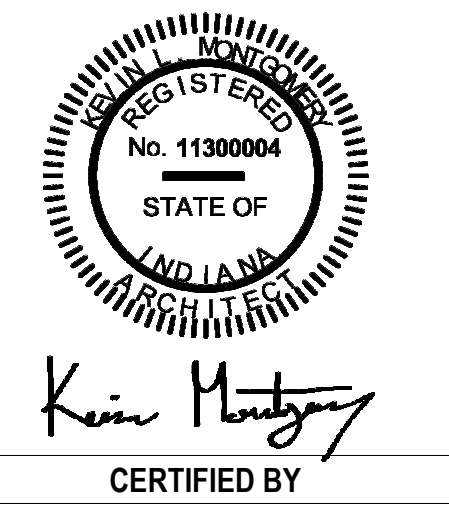
2 OVERHANG SECTION  
SCALE: 3/4" = 1'-0"



1 C5.8 SECTION  
SCALE: 3/4" = 1'-0"

1892 Pickleball Park

174 S. Avon Ave.  
Avon, IN 46123



CERTIFIED BY

| ISSUANCE INDEX |            |  |
|----------------|------------|--|
| DATE:          | 01.28.2026 |  |
| PROJECT PHASE: | BIDDING    |  |

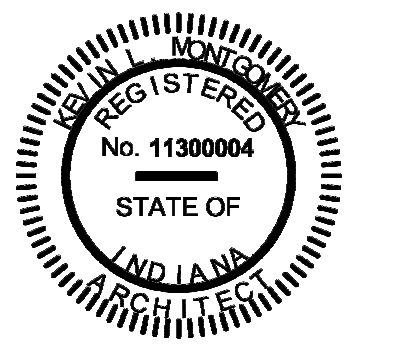
| REVISION SCHEDULE |             |        |
|-------------------|-------------|--------|
| NO.               | DESCRIPTION | DATE   |
| 1                 | ADD 2       | 022526 |
|                   |             |        |
|                   |             |        |
|                   |             |        |
|                   |             |        |

Project Number 25022

DRAWN BY Author  
AUTHOR  
DRAWING NAME  
WALL SECTIONS & DETAILS  
DRAWING NO.  
A6-1

1892 Pickleball Park

174 S. Avon Ave.  
Avon, IN 46123



Kevin Montague  
CERTIFIED BY

ISSUANCE INDEX

|                |            |
|----------------|------------|
| DATE:          | 01.28.2026 |
| PROJECT PHASE: | BIDDING    |

REVISION SCHEDULE

| NO. | DESCRIPTION | DATE   |
|-----|-------------|--------|
| 1   | ADD 2       | 022526 |
|     |             |        |
|     |             |        |
|     |             |        |
|     |             |        |

Project Number 25022

DRAWN BY  
Author

DRAWING NAME  
FOUNDATION & FRAMING  
PLAN

DRAWING NO.  
S1-1

PLAN NOTES - STRUCTURAL PLANS

- THICKENED SLAB. REFER TO TYPICAL DETAIL.
- 1/2" THICK GALVANIZED STEEL PLATE. 7" WIDE TO MATCH WIDTH OF GULUM BEAM. LENGTH TO BE 26". PROVIDE ANCHORS TO GULUM. WELD PLATE TO COLUMNS BELOW. DUPLEX SYSTEM PAINT PLATE. SEE DETAIL 8/S4-1.
- GULUM BEAM LOAD BEAR ONTO CMU. REFER TO DETAIL 5/S1-1. INCLUDING STEEL ANCHOR SHOE FOR BEAM TO BLOCK.
- 3/4" X 3" X 24" STEEL BAR WITH PRE-DRILLED HOLES FOR EDGE REINFORCEMENT. SPACE AT APPROX 32" ON CENTER. SEE DETAIL 6/A6-1.
- FILL ALL CMU CELLS FULL OF GROUT WITHIN 48" OF THE CORNER FOR WOOD BEAM BEARING. INSTALL A #4 BAR VERTICAL FULL HEIGHT IN GROUTED CELLS.
- FILL BLOCK CELLS AT 32" ON CENTER AND INSTALL A #4 BAR VERTICALLY FULL HEIGHT OF WALL.
- GALVANIZED STEEL RAFTER TO WALL ASSEMBLY SEE DETAIL 7/S1-1.

WALL FOOTING SCHEDULE

| FTG MARK | FOOTING SIZE |       | FOOTING REINFORCING |                       |
|----------|--------------|-------|---------------------|-----------------------|
|          | WIDTH        | DEPTH | LONGITUDINAL        | TRANSVERSE            |
| WF1      | 2'-0"        | 1'-0" | (3) #4 CONTINUOUS   | #4 x 2'-0" @ 24" O.C. |
| WF2      | 3'-8"        | 1'-8" | (4) #5 CONTINUOUS   | #4 x 2'-6" @ 24" O.C. |

1. CENTER FOOTINGS BENEATH WALL. U.N.O.

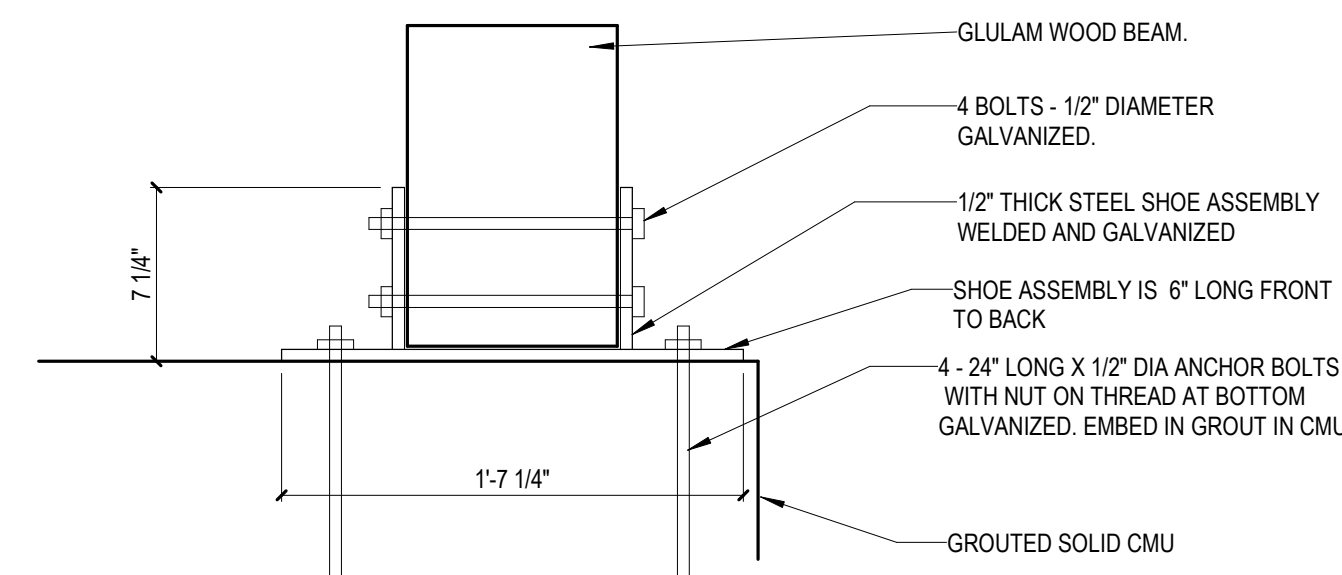
PLAN / LEGEND:

5' CONCRETE SLAB ON GRADE W/ 6x6 - 1.4 x 1.4 WWF AND "E5 INTERNAL CURE" ADMIXTURE AT 4 OZ./CWT OVER 15 MIL CLASS A VAPOR BARRIER OVER 6" COMPACTED CRUSHED STONE (NUMBER 53 CRUSHED STONE OR EQUIV.). PROVIDE E5 PROTECT SEALANT SPRAYED BETWEEN 300-500 SF/GAL.

T/C DENOTES TOP OF CONCRETE  
C.J. DENOTES SLAB ON GRADE CONTROL/CONTRACTION JOINT

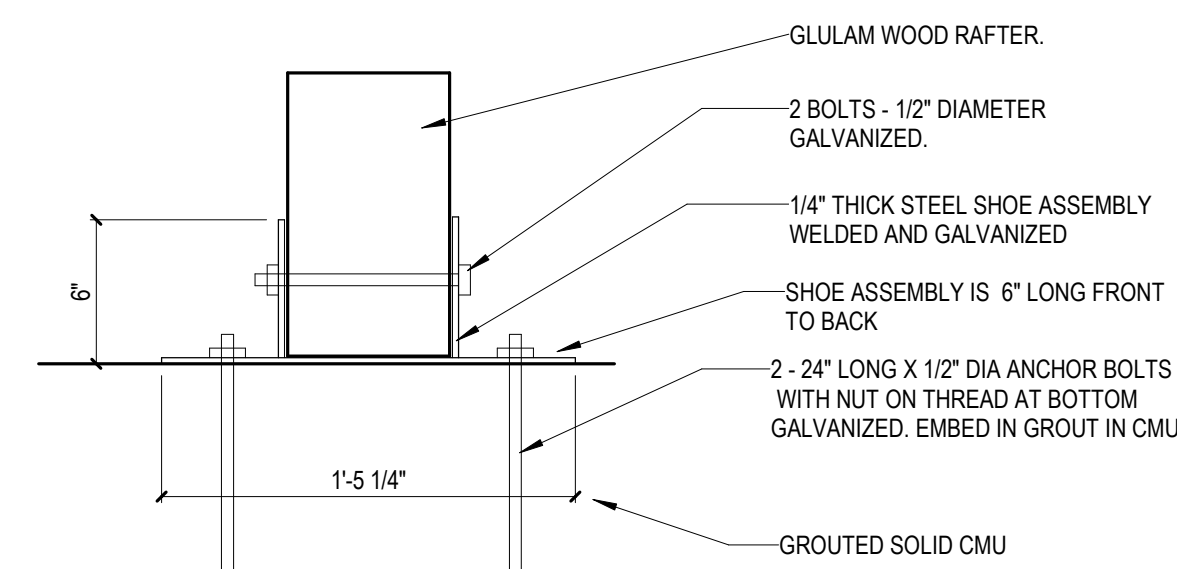
DENOTES WALL FOOTING MARK & TOP OF FOOTING ELEVATION (SEE WALL FOOTING SCHEDULE)

3" TONGUE AND GROOVE ROOF DECKING. SIMPLE SPAN LAYOUT. PREFINISH PRIOR TO INSTALL WITH A SPAR URETHANE.



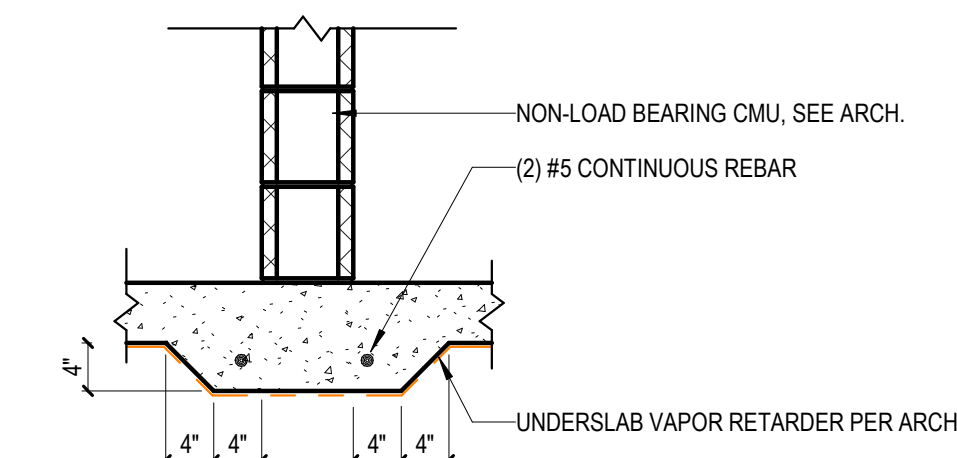
2 BEAM TO CMU DETAIL

SCALE: 1 1/2" = 1'-0"



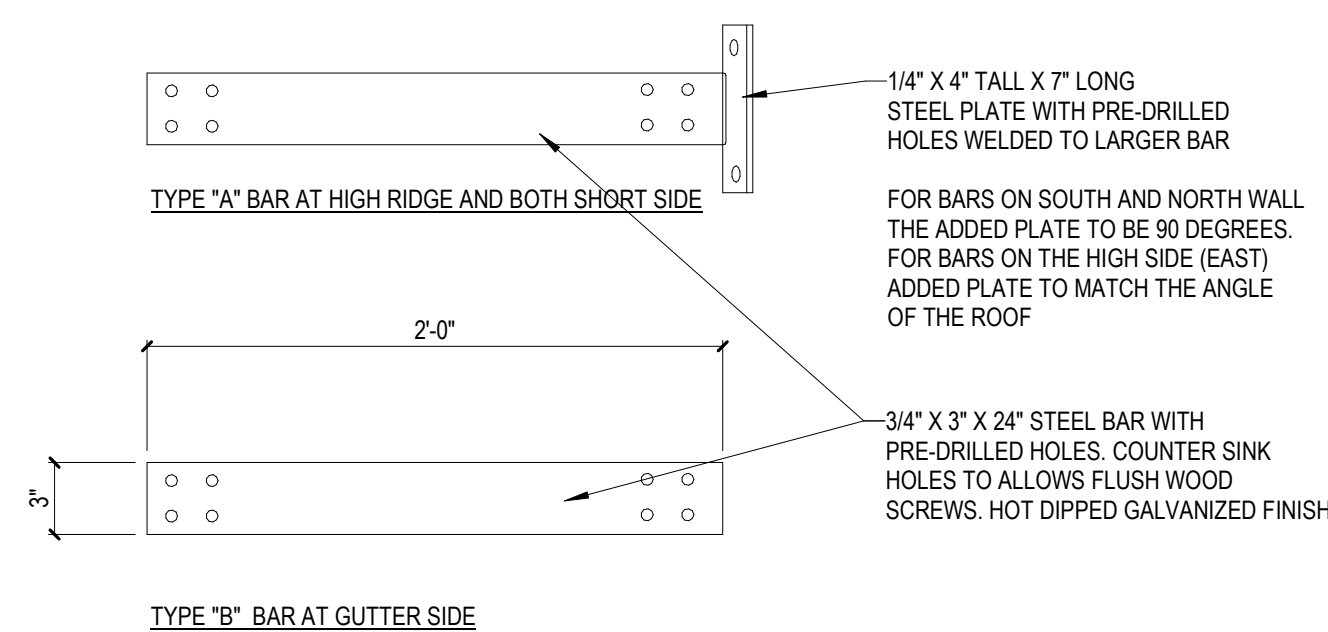
5 RAFTER TO CMU DETAIL

SCALE: 1 1/2" = 1'-0"



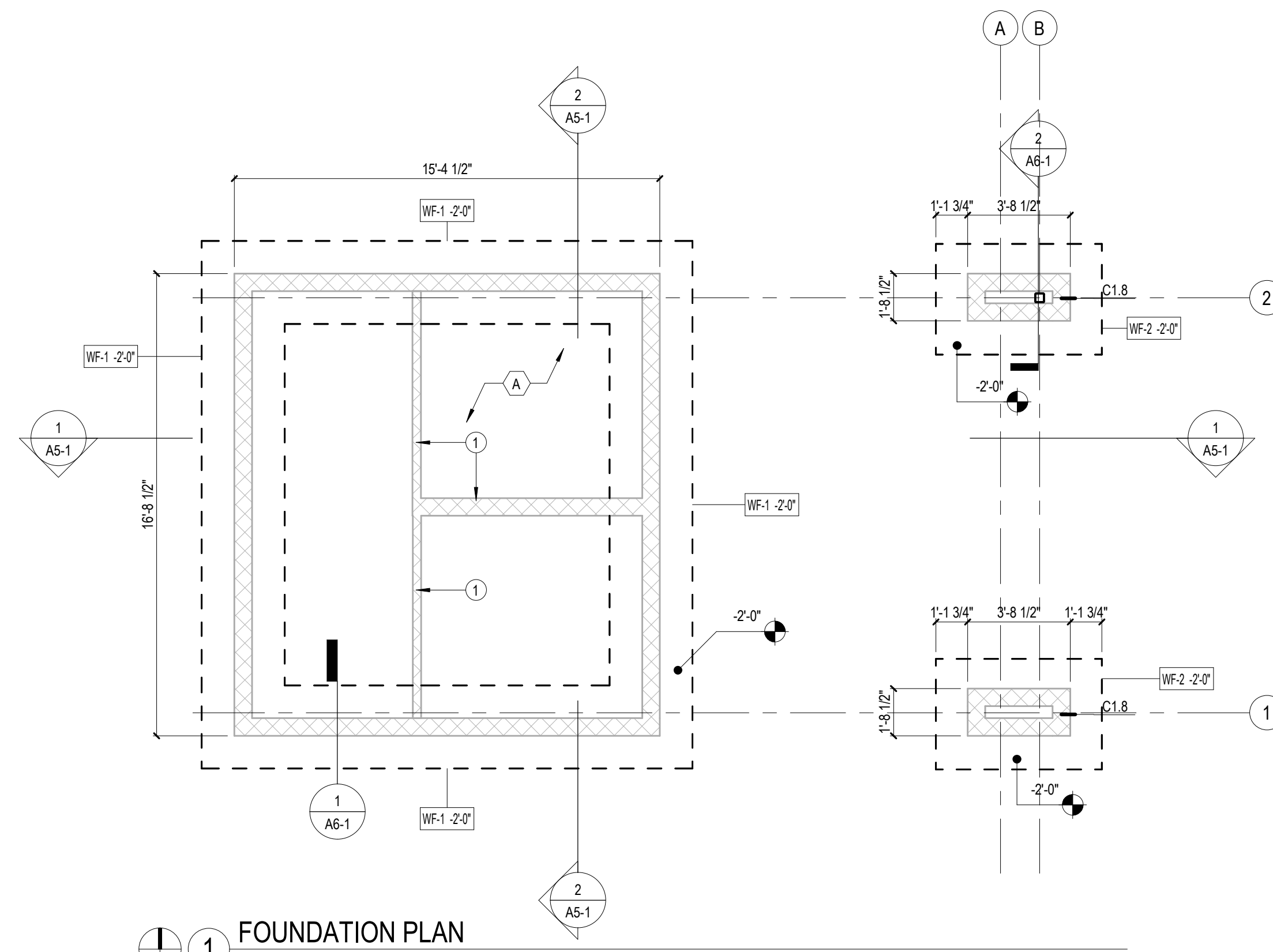
3 THICKENED SLAB TYP.

SCALE: 3/4" = 1'-0"



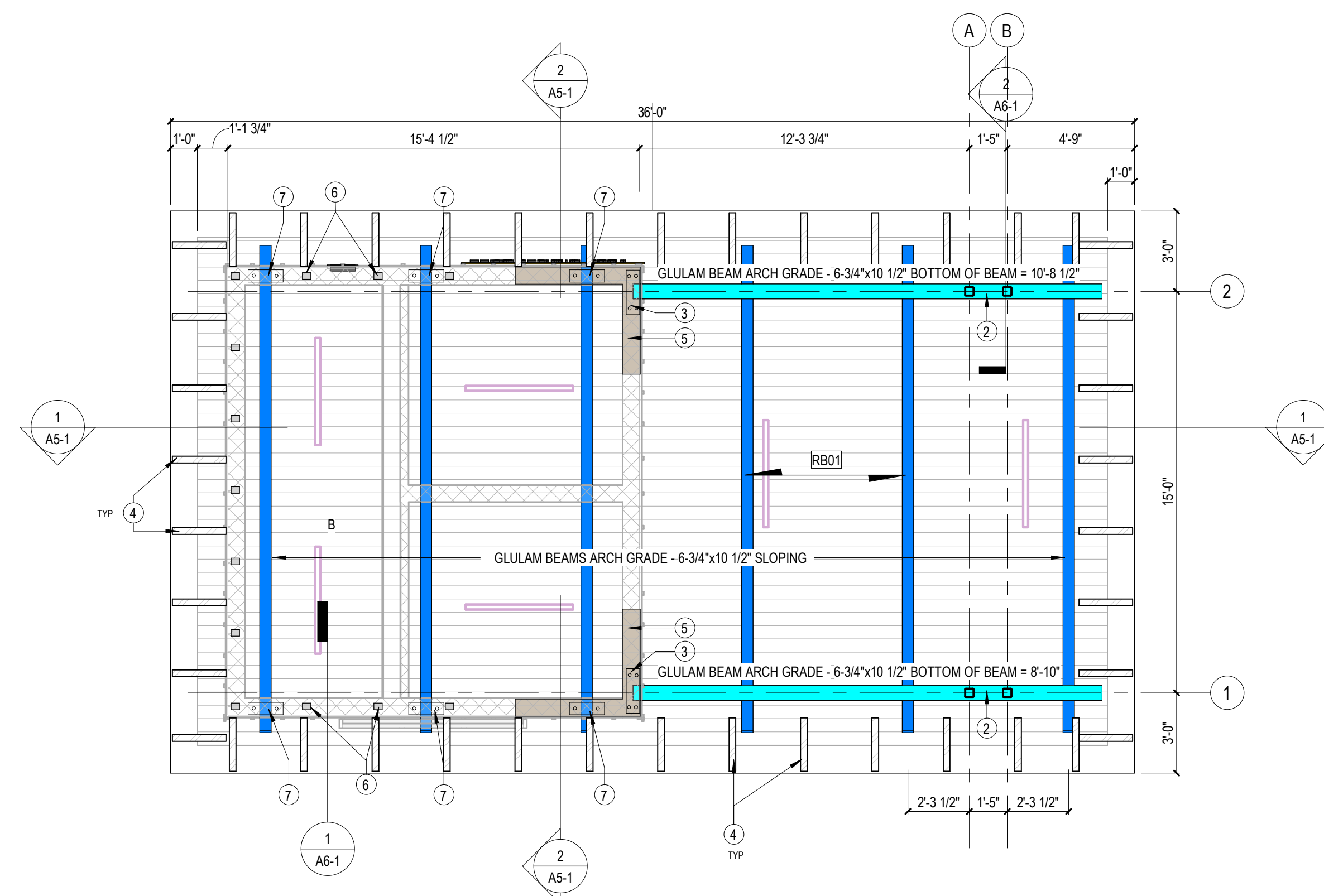
8 STEEL ROOF BAR DETAIL

SCALE: 1 1/2" = 1'-0"



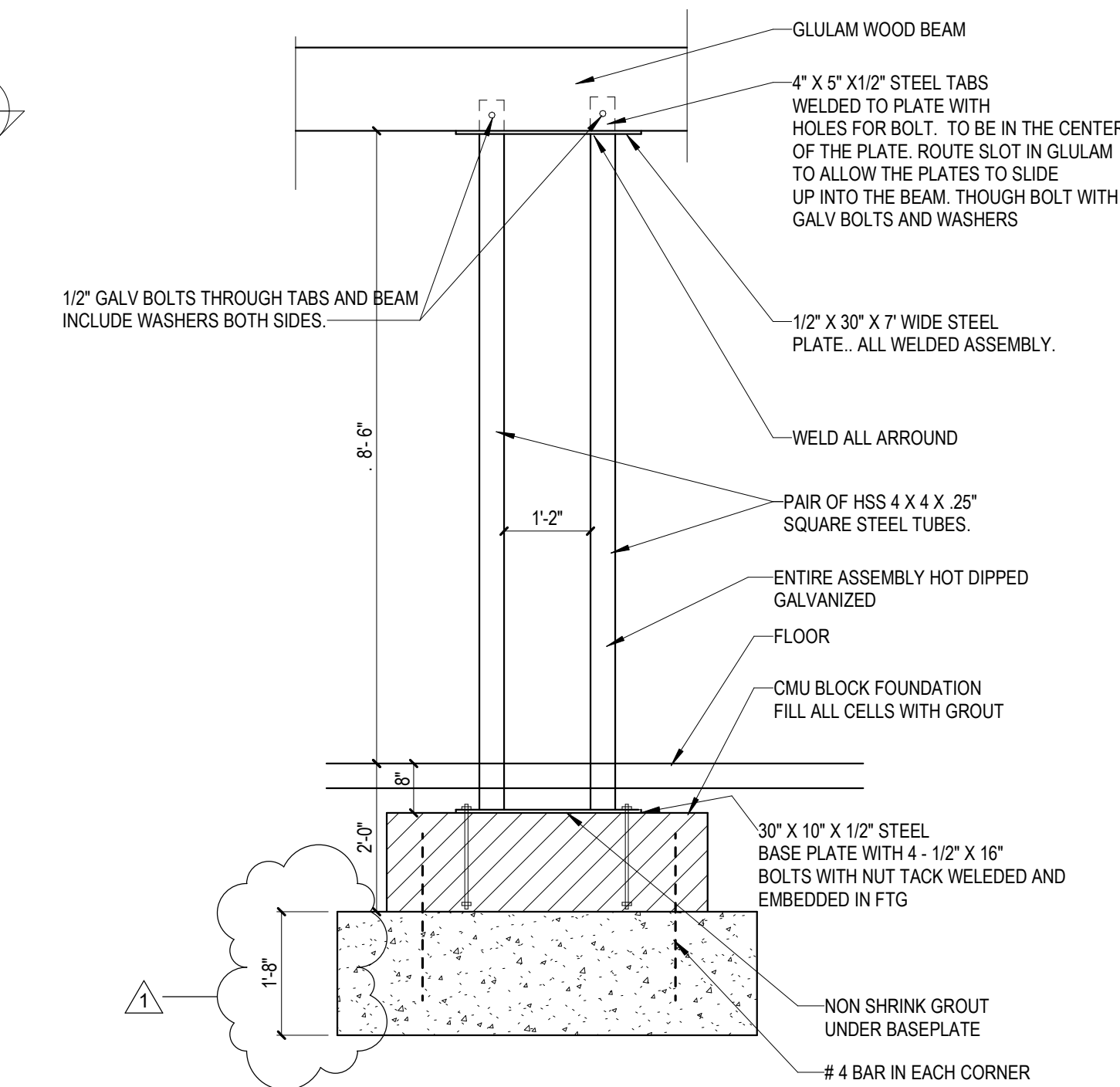
1 FOUNDATION PLAN

SCALE: 1/4" = 1'-0"



4 ROOF FRAMING PLAN

SCALE: 1/4" = 1'-0"



7 STEEL COL PAIR DETAIL

SCALE: 1/2" = 1'-0"