

ADDENDUM NO. 1

Southmont High School Tennis Court Improvements

Southmont Schools
Crawfordsville, Indiana

Project No. 225087.00

Index of Contents

Addendum No. 1, 2 items, 1 page
Revised Drawing Sheet: E1.0
Pre-Bid Meeting Agenda
Pre-Bid Sign-in Sheet

March 30, 2026

I hereby certify that this Addendum was prepared by me or under my direct supervision and that I am a duly registered Architect/Engineer under the Laws of the State of Indiana.

FANNING/HOWEY ASSOCIATES, INC.
ARCHITECTS/ENGINEERS/CONSULTANTS



Paul A. Miller, License No. AR10800161
Expiration Date: 12/31/2027

TO: ALL BIDDERS OF RECORD

ADDENDUM NO. 1 to Drawings and Project Manual, dated February 27, 2026, for Southmont Schools, 6401 US 231 S., Crawfordsville, Indiana 47933; as prepared by Fanning/Howey Associates, Inc., Indianapolis, Indiana. This Addendum shall hereby be and become a part of the Contract Documents the same as if originally bound thereto.

The following clarifications, amendments, additions, revisions, changes, and modifications change the original Contract Documents only in the amount and to the extent hereinafter specified in this Addendum.

Each bidder shall acknowledge receipt of this Addendum in his proposal or bid.

NOTE: Bidders are responsible for becoming familiar with every item of this Addendum. (This includes miscellaneous items at the very end of this Addendum.)

RE: ALL BIDDERS

ITEM NO. 1. PROJECT MANUAL, SECTION 25 05 43 – UNDERGROUND DUCTS AND RACEWAYS FOR ELECTRICAL SYSTEMS

A. Change 3.1, D., as follows:

“D. Underground Ducts Crossing Driveways and Roadways: RNC, NEMA Type EPC-40-PVC, encased in reinforced concrete.”

ITEM NO. 2. REVISED DRAWING SHEET:

A. Drawing Sheet: E1.0 has been revised, dated 3/30/26, and is included with and hereby made a part of this Addendum. These Drawings supersede the original documents.

END OF ADDENDUM

PREBID CONFERENCE AGENDA

Southmont Schools
Crawfordsville, IN

Date: March 26, 2026

Re: Southmont High School – Tennis Court Improvements
Project Number: 225087.00

Present: Please Sign-In

1. Advertisement to Bidders: Per the information contained in the Advertisement to Bidders in the Project Manual, bids will be received until 2:00 p.m. on Tuesday, **April 7, 2026**, at the Southmont Schools Central Office, 64011 US 231 S, Crawfordsville, Indiana, 47933. Bids received after this time will not be accepted. Bids will be opened and publicly read aloud immediately after the specified closing time. Bids may be held for 60 days.
2. Obtaining Bid Documents: Bid Documents are available as indicated in the Advertisement to Bidders at Eastern Engineering's website (distribution.easternengineering.com).
3. Instructions to Bidders: Per the information contained in the Project Manual, bids shall be executed on the Bid Proposal Form provided. Other information to be included with the bid form is outlined in the Instructions to Bidders. Each bidder is required to bid every item called for on the bid form, including alternates, if applicable, and allowances.
 - a. Base Bid:
Single Lump Sum Bid.
 - b. Alternates:

Alternate No. 1:	Tennis Shade Structure
Alternate No. 2:	Post-tensioned concrete
Alternate No. 3:	Black PVC Fencing
 - c. Allowances (Contingency):

Amounts to be included in Contract Sum	
Allowance No. 1	\$50,000
4. Bonds: See the Instructions to Bidders and the Advertisement to Bidders for the requirements of bid securities and bonds required. Performance and Payment Bonds are for 100% of the bid.
5. Request for Approval of Product Substitution: Written request for approval must be received by A/E at least ten days prior to the date for receipt of Bids. Substitution request form included in the Project Manual (00 26 00.01).

6. Available Project Information:
 - a. Existing Construction Documents from original construction.
 - i. 1967 original construction and 2004 Addition
 - b. School Year Calendars for 2025-26 and 2026-27.
 - c. Revit File or CAD Files.

7. Identification of Submission of Bid Proposal: Per the Instructions to Bidders, the Bid Proposal shall be submitted in an envelope identified with the name of the project, name of the bidder, base bid package, and the date and closing time of bids. Photocopies of the bid form are acceptable.
 - a. Review "Bidder Reminder List" to be completed & included in Bid Package (00 41 16 - 6)

8. General Conditions of the Contract for Construction: Refer to Document 00 72 00 in the Project Manual
 - a. General Conditions of the Contract for Construction (AIA A201-2017)

9. Certificate of Insurance: Refer to Exhibit A to the Contract 00 52 01.

10. Criminal History Information: Refer to Document 00 73 60 in Project Manual.
 - a. Southmont's Background Check Requirements.

11. Time of Commencement and Completion of Project: A Notice to Proceed will be issued after reviewing bids with the Southmont Leadership for the start of Shop Drawings. The School Board will be asked to award a Contract at an upcoming School Board Meeting. A Notice to Proceed for the entire project will be issued upon board approval and a Preconstruction Conference will be scheduled. The final completion of Work scheduled as follows:

Interior Improvements:	
Construction Work can begin:	Contract Finalized
Final Completion:	August 31, 2026

12. Permits, Fees, and Notices: The "Certificate of Plan Approval" from the Department of Homeland Security will not be required for this project. All other permits, fees, and notices and cost are the responsibility of the Contractor as indicated in the Summary.

13. Temporary Facilities and Controls: Information on temporary facilities and controls are listed in Section 01 50 00 of the Project Manual.
 - a. Temporary water and power, the Owner to make available.

Prebid Agenda
Southmont HS – Tennis Court Improvements
Page 3

- b. Temporary toilets by Contractor.
14. Addenda:
- a. Addendum No. 1 – anticipated to be issued Monday, March 30.
Addendum No. 2 – do not anticipate a second addendum.
15. Progress Cleaning: Refer to Project Manual (01 74 13) for responsibility of the Contractor.
16. Questions and Clarifications: Per the instructions in the Project Manual, questions should be emailed to the appropriate contact person at Fanning Howey and followed up with a telephone call. Contacts and telephone numbers are listed in the Instruction to Bidders. Questions requiring clarifications or revisions will be addressed in an addendum. Any questions can be directed in writing to Mike Schipp at mschipp@fhai.com, phone number (317) 407-7229.
17. Site Access: Any access to be the sites shall be coordinated with Owner's Representative:
Michael Nehring, Chief Operations Officer
michael.nehring@southmont.k12.in.us
(765) 866-0203 ext, 807
Note: School Hours: 8:00 am to 3:00 pm daily.
18. Current Events:
- a. Bidding Environment?
 - b. Procurement of Materials?
 - c. Bid Date/Completion Date(s)?
 - d. Interest from Subcontractors?
19. Review of Project Scope:
- a. Work by others at site
 - b. Tour
20. Discussion Items and Questions:

Michael K. Schipp, AIA, CDT LEED AP BD+C
Project Manager / Principal

Tennis Courts

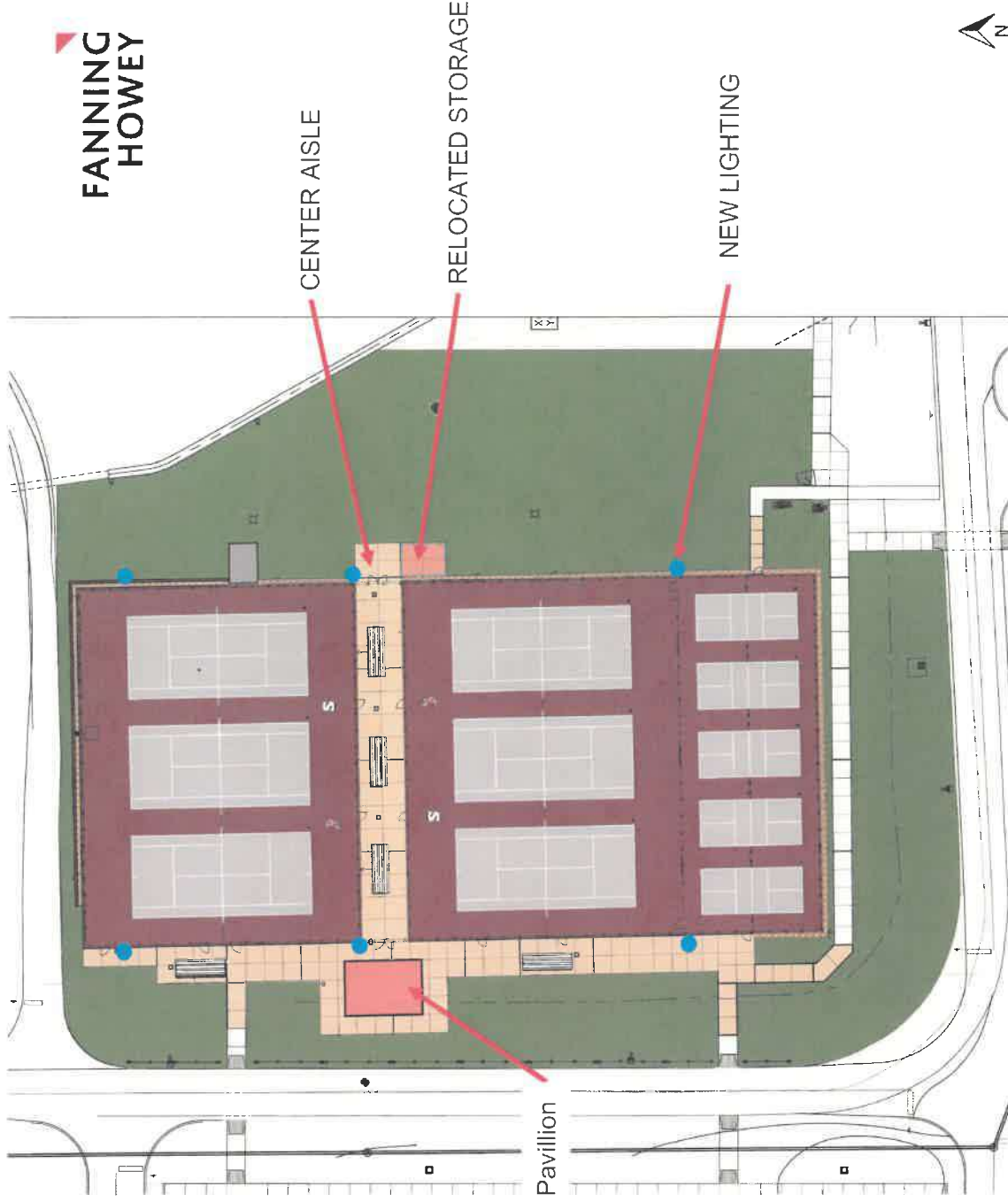
Site Plan



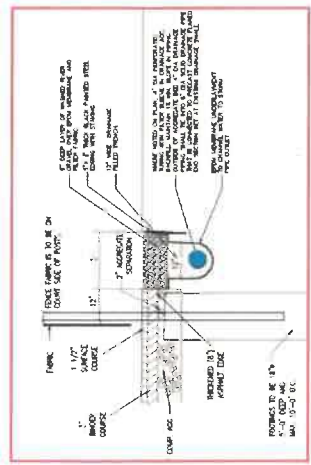
Tennis Courts

Tennis Court Features:

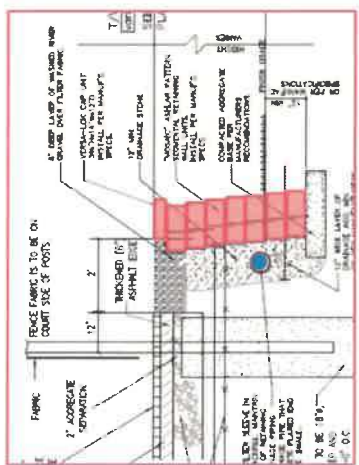
- Pathways/Connectivity
- Center Aisle
- 6 Tennis Courts
 - Logos
 - Power
- 5 Pickle Ball Courts
 - Southside
- Seating Areas
- All Courts Lighted
 - LED Fixtures
- Relocated Storage
- Reduced Surface Area
 - 12' Between Courts
- Tennis Pavillion (Alternate)
 - Lighted/Power
- Post Tension Concrete (Alternate)



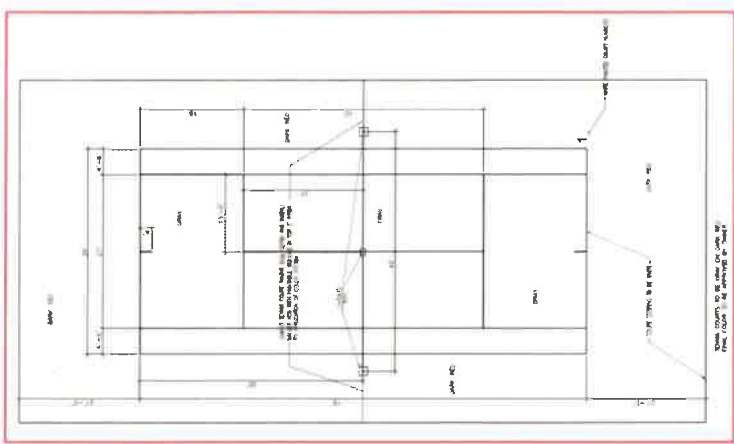
Outdoor Tennis Features:



Drainage



Retaining Wall



Tennis Pavillion

Project Name:

Southmont High School:
Tennis Court Improvements

Project No.

225087.00

Meeting Date

March 26, 2026

ATTENDANCE SIGN-IN SHEET

Please print clearly. Your name and title will be recorded in the meeting report.

PRESENT	NAME	TITLE	COMPANY	PHONE	E-MAIL
	GREGG STARK	ESTIMATOR	BOYLE CONSTRUCTION	317-269-0543	BIDS@BCM1.US
	Brian Keim	ESTIMATOR	Price Excavating	765-362-8895	david.price@excavating
	Kevin Christman	SALES	Astroturf-Laybold	415-640-6412	@gmail.com
	CRAIG CUSTER	President	Custer Electric, Inc	765-777-6093	Kevin.Christman@Astroturf.com
	Nick Golden	Estimator	Baumgardner Asphalt	317-318-4000	ccuster@baumgardnerasphalt.com
	Robert Toombs	President	TL Kincaid Contracting	765-409-5004	ngolden@baumgardnerasphalt.com Robert@TKKincaidContracting.com

PRESENT	NAME	TITLE	COMPANY	PHONE	E-MAIL
	Eric Amstutz	PM	Brand Electric	765-426-6890	EricAmstutz@BrandElectric.com
	Shawn Schaubert	PM	Hannig Construction	812-235-6218	sschauber@hannigconstruction.com
	Michael Bennett	Estimator	Milestone Contractors	765-772-7500	Michael.Bennett@MilestoneL.com
	Roy McDowell	Estimator	Powers and Sons	317-775-8506	roy.mcdowell@powersandsons.com

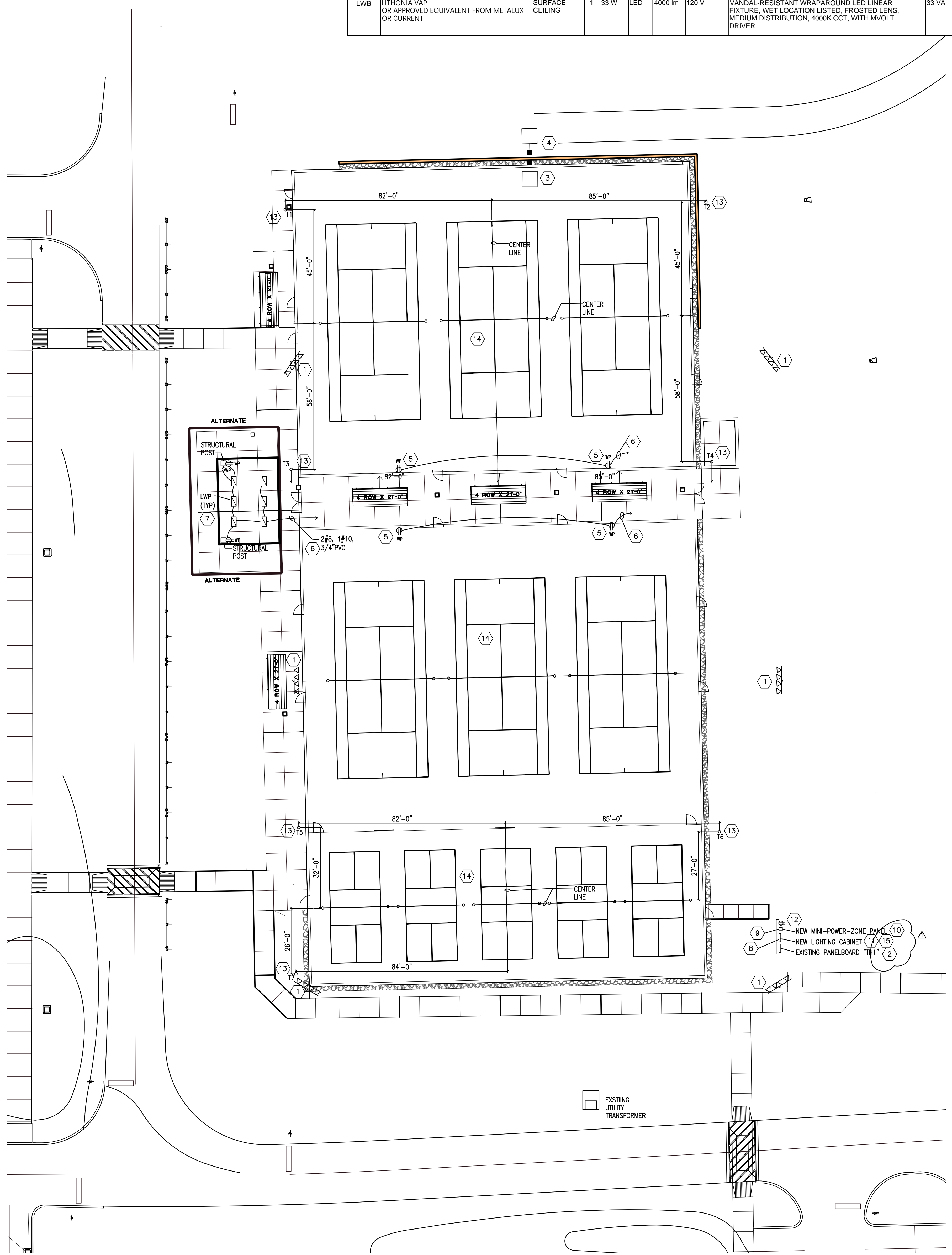
SOUTHMONT JR/SR HIGH SCHOOL TENNIS IMPROVEMENTS

6460 US-231 CRAWFORDSVILLE, IN SOUTH MONTGOMERY SCHOOL CORPORATION

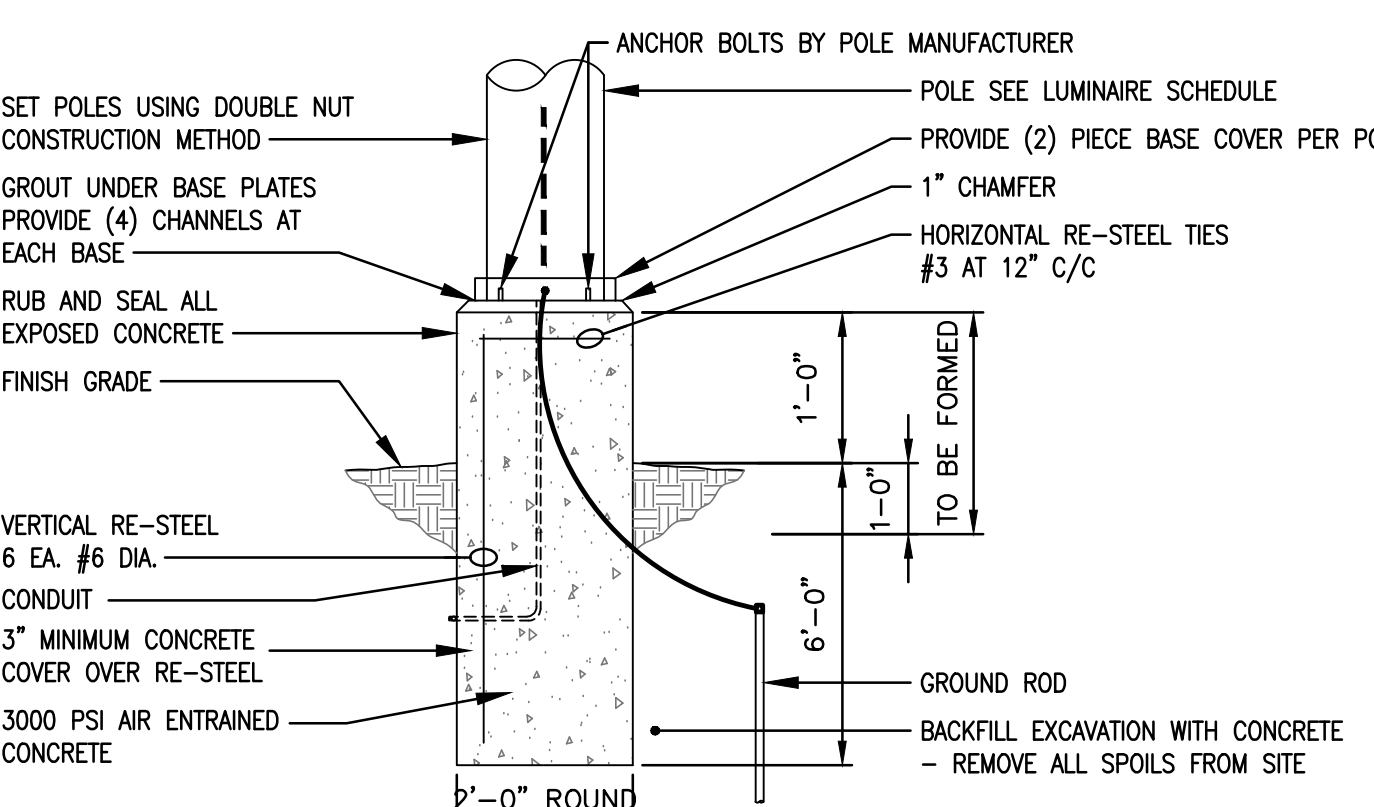
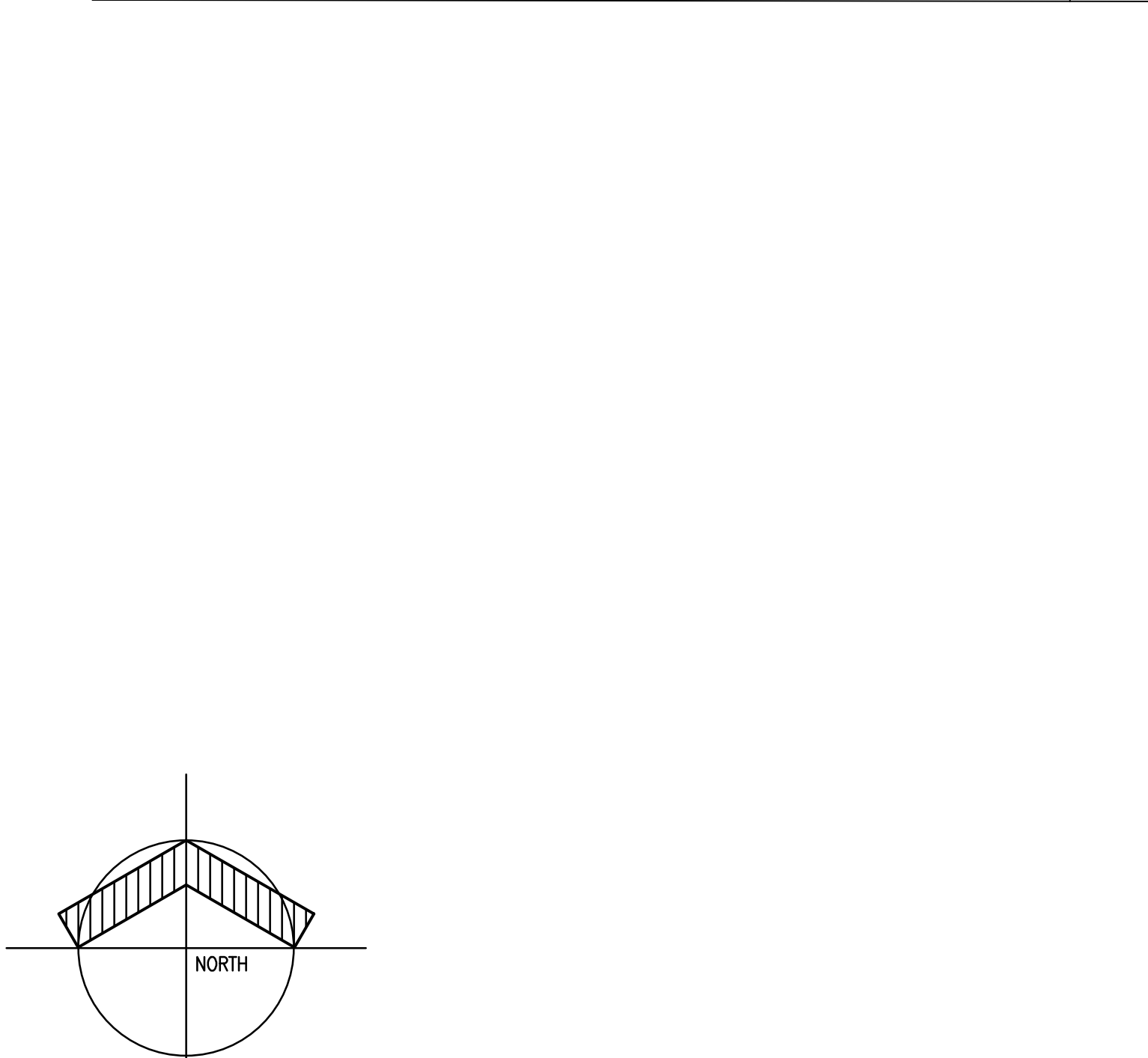
LUMINAIRE SCHEDULE						
PLAN TYPE	MANUFACTURER/CATALOG	MOUNTING SURFACE	NO. LAMPS	WATTS	LUMENS	APPLIED VOLTAGE
LWB	LITHONIA VAP OR APPROVED EQUIVALENT FROM METALUX OR CURRENT	Ceiling	1	33 W	4000 lm	120 V
						VANDAL-RESISTANT WRAPAROUND LED LINEAR FIXTURE, WET LOCATION LISTED, FROSTED LENS, MEDIUM DISTRIBUTION, 4000K CCT, WITH MVOLT DRIVER.
						VA LOAD: 33 VA

SITE ELECTRICAL KEYNOTES

- EXISTING TENNIS COURT LIGHT FIXTURES, POLE, STEP-DOWN TRANSFORMER, RECEPTACLE AND BASE AT THIS LOCATION IS TO BE DISCONNECTED AND REMOVED. REMOVE ALL CONDUIT AND WIRING BACK TO PANELBOARD "TH1".
- EXISTING PANELBOARD "TH1" AT THIS LOCATION IS TO REMAIN IN PLACE.
- EXISTING SITE LIGHTING POLE AT THIS LOCATION IS TO BE RELOCATED, REFER TO NOTE 4, FOR ADDITIONAL REQUIREMENTS.
- NEW LOCATION OF EXISTING SITE LIGHTING POLE, EXTEND EXISTING CONDUIT AND WIRING TO NEW LOCATION, ROTATE FIXTURE HEAD TO THE NORTH.
- PROVIDE A WEATHERPROOF, 20A DUPLEX GROUND FAULT RECEPTACLE WITH WEATHERPROOF WHILE IN-USE COVER, DEVICE AND BOX TO BE BLACK IN COLOR, MOUNT TO NEAREST FENCE POST, COORDINATE WITH SITE DRAWINGS.
- WIRE TO A 20AMP, 1-POLE CIRCUIT BREAKER IN NEW MINI-POWER ZONE PANEL - WIRE WITH 3/4" PVC.
- UNDER THE ALTERNATE BID, MOUNT LIGHT FIXTURES TO STRUCTURAL BEAM RUNNING NORTH AND SOUTH ALONG UNDERSIDE OF ROOF. COORDINATE EXACT LOCATION OF FIXTURES IN THE FIELD.
- DISCONNECT AND REMOVE EXISTING RELAYS AT THIS LOCATION.
- DISCONNECT AND REMOVE EXISTING 1.5KVA STEP-DOWN TRANSFORMER AT THIS LOCATION.
- PROVIDE A NEW 9KVA, 18 CIRCUIT BREAKER, 480 DELTA-208Y/120V, 3-PHASE MINI POWER -ZONE PANEL/ TRANSFORMER, FEED FROM EXISTING PANELBOARD "TH1" USING CIRCUITS "26, 28, 30", WITH A 15AMP, 3-POLE CIRCUIT BREAKER, MOUNT TO EXISTING STEEL CHANNEL SUPPORTS AT THIS LOCATION.
- PROVIDE A NEW MUSCO LIGHTING CABINET AT THIS LOCATION, MOUNT TO EXISTING STEEL CHANNEL SUPPORTS, WIRE CONDUCTORS SERVING THE NEW SPORTS LIGHTING TO CONTACTORS IN THE LIGHTING CABINET, WIRE EACH CONTACTOR TO A 30AMP, 1-POLE CIRCUIT BREAKER IN EXISTING PANELBOARD "TH1", THE 120V, 1-PHASE POWER FOR THIS CABINET IS TO COME FROM A DEDICATED 120V, 1-POLE CIRCUIT BREAKER IN THE NEW MINI-POWER ZONE PANEL/TRANSFORMER.
- WIRE EXISTING DUPLEX RECEPTACLE AT THIS LOCATION TO A 20AMP, 1-POLE CIRCUIT BREAKER IN THE NEW MINI-POWER ZONE PANEL/TRANSFORMER.
- NEW SPORTS LIGHTING POLE AT THIS LOCATION, WIRE TO THE NEW MUSCO LIGHTING CABINET WITH 2#8, 1#10, 1#12 PVC.
- DO NOT RUN ANY ELECTRICAL CONDUITS UNDER THE PLAYING SURFACE.
- PROVIDE TWO MUSCO PLAYER-ACTIVATED CONTROLLER PUSH BUTTONS ADJACENT TO THE MUSCO LIGHTING CABINET, ALSO PROVIDE A STROBE TO INDICATE THE TIME SET IN EACH CONTROLLER IS ABOUT TO EXPIRE, ONE PUSH BUTTON TO CONTROL THE FOUR TENNIS COURT LIGHT POLES AND ONE PUSH BUTTON TO CONTROL THE TWO PICKLEBALL LIGHT POLES.



ELECTRICAL SYMBOLS		
SYMBOL	DESCRIPTION	MOUNTING HEIGHT TO BOTTOM
[Symbol]	CONDUIT CONCEALED ABOVE CEILING OR IN WALL	
[Symbol]	CONDUIT CONCEALED IN OR BELOW FLOOR, OR UNDER GROUND	
[Symbol]	30 AMP, 125 VOLT, NEMA 5-20R DUPLEX RECEPTACLE WITH COMMON COVER PLATE MOUNTED VERTICALLY -4" TO BOTTOM (LETTERS) IN FRONT INDICATES LOAD TYPE, SEE BELOW, SINGLE LINE INDICATES HORIZONTAL MOUNTING, DOUBLE LINE INDICATE QUAD, DARK CENTER INDICATES ABOVE COUNTER TOP MOUNTING 1/4" NEMA 5-30R, UNO CIRCUIT NUMBER (e.g. -1AL1-1) ADJACENT TO THE SYMBOL ON PLANS INDICATES PANELBOARD/CIRCUIT NUMBER SERVING RECEPTACLE, UNO	
[Symbol]	RECEPTACLE WITH 30 AMP SINGLE POLE SWITCH IN 2 GANG BOX AND COMMON COVER PLATE	
[Symbol]	CASEWORK, COORDINATE WITH ARCHITECTURAL COPY MACHINE	
[Symbol]	COFFEE MAKER	
[Symbol]	RED RECEPTACLE AND STAINLESS COVER PLATE, CONNECT TO BACKUP POWER	
[Symbol]	GROUND FAULT CIRCUIT INTERRUPTING TYPE	
[Symbol]	ISOLATED GROUND	
[Symbol]	MONITOR - 60" AFF	
[Symbol]	MICROWAVE	
[Symbol]	REFRIGERATOR - 48" AFF	
[Symbol]	TWIST LOCK	
[Symbol]	TAMPER RESISTANT	
[Symbol]	DUPLEX RECEPTACLE WITH (2) USB PORTS	
[Symbol]	UNDER COUNTER REFRIGERATOR	
[Symbol]	VENDING MACHINE, FEED FROM 30 mA GFCI BREAKER IN PANELBOARD	
[Symbol]	WALL MOUNTED VIDEO PROJECTOR, 96" AFF UNO	
[Symbol]	WATERBOARD	
[Symbol]	ELECTRIC WATER COOLER, FEED FROM 5 mA GFCI BREAKER IN PANELBOARD	
[Symbol]	WASH/DISINFECTANT VATORY, CONNECT TO NEAREST THROUGH FEED GFCI RECEPTACLE	
[Symbol]	WASHING MACHINE, FEED FROM 30 mA GFCI BREAKER IN PANELBOARD	
[Symbol]	WEATHER RESISTANT GFCI WITH IN-USE TYPE WEATHERPROOF COVER, HINGED AT TOP	
[Symbol]	EXPLOSION PROOF	
[Symbol]	SURFACE CIRCUIT BREAKER PANELBOARD	
[Symbol]	UTILITY METER	
[Symbol]	UTILITY POLE	
[Symbol]	WATERPROOF SWITCH, 120V, 20A, FLUSH UNO	44"
[Symbol]	SURFACE MOUNTED LUMINAIRE, APPROXIMATE SIZE INDICATED	CLG
[Symbol]	ARM MOUNTED AREA LUMINAIRE	



NOTE:
 PROVIDE 5/8" x 8'-0" GROUND ROD AT EACH POLE (TOP AT 2'-0" BELOW GRADE) AND CONNECT TO POLE WITH 1/8" AWG SOLID CU CONDUCTOR IN 1/2" PVC CONDUIT.
 TACK WELD ALL ANCHOR BOLT NUTS IN PLACE WHEN POLES ARE SET AND PLUMB. REPAIR FINISH WITH GALCON PAINT.

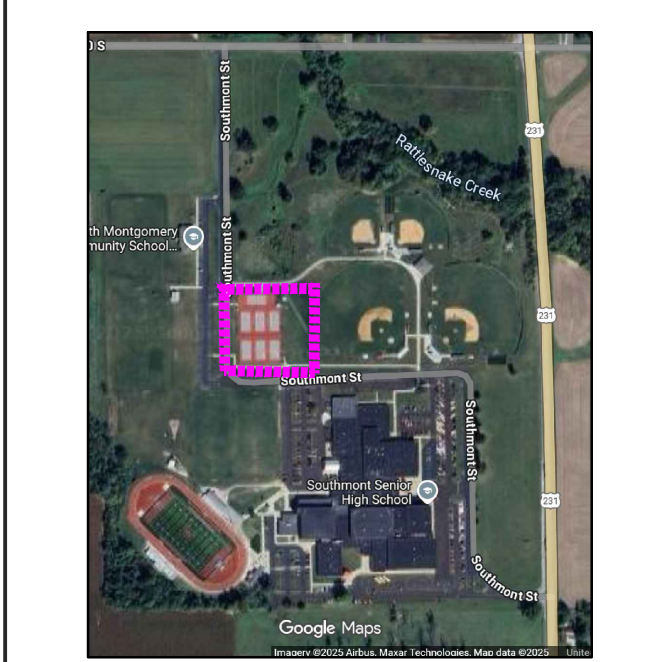
ELECTRICAL SITE PLAN SCALE: 1" = 20'-0"

1 LIGHTING POLE FOUNDATION DETAIL (16'-8" TO 30'-0" LONG) NO SCALE

ARCHITECT

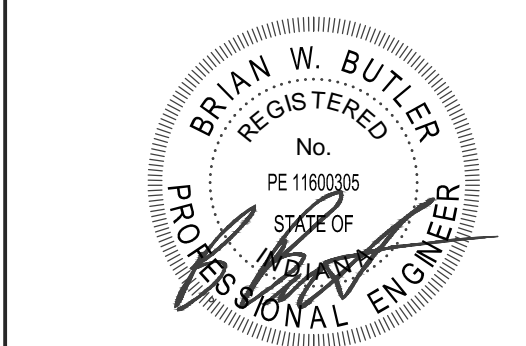


317-848-0966 WWW.FHAI.COM



KEY PLAN

FINAL CONSTRUCTION PLANS



PROJECT MANAGER: MS
DRAWN BY: JB
PROJECT NUMBER: 22097.00
PROJECT CONSTRUCTION ISSUE DATE: 03-27-2024

REV. NO.	DESCRIPTION	DATE
1	ADDENDUM NO. 1	03.30.2024

ELECTRICAL SITE PLAN

E1.0