



SACS

SOUTHWEST ALLEN COUNTY SCHOOLS

Addendum

ADDENDUM NO: 4

PROJECT: **2026 PLAYGROUND IMPROVEMENT PROJECT AT HAVERHILL, ABOITE, AND COVINGTON ELEMENTARY SCHOOLS**

CONTEXT PROJECT NO: 25-1943

DATE: 03/31/2026

BY: Liz Mooney

This Addendum is issued in accordance with the provisions of “The General Conditions of the Contract for Construction,” Article 1, “Contract Documents” and becomes a part of the Contract Documents as provided therein. This Addendum includes:

PART 1 – BIDDING AND CONTRACT REQUIREMENTS

- A. **REPLACE** ‘Bid Form B’ with the enclosed version that omits individual school responses. The Owner desires General Trades + Installation pricing for all three (3) schools as a Combination Bid. Select scenarios and alternates apply. See the enclosed Bid Form.
- B. The Owner received nine (9) incredibly strong responses to their playground and surfacing product inquiry, then embarked on an exhaustive analysis process to compare and contrast each proposal. Factors of play experience, play value, aesthetics, response times, references, warranty terms, price, and lead time were all factored into consideration.

Based upon feedback from building leaders and district administrators, the General Trades + Installation bids shall **INCORPORATE** the following Playground Equipment and Playground Turf products. All products shall be installed by manufacturer-certified installers to protect warranty provisions to the Owner.

Playground Equipment: **Landscape Structures, Inc.**

Playground Turf: **ForeverLawn, Inc.** (Scenario 1)

Playground Turf: **CSSS, LLC** (Scenario 2)

PART 2 – SPECIFICATIONS

- A. UNUSED

Addenda

PART 3 – DRAWINGS

- A. **UPDATE** Sheet L101 – Haverhill Elementary Playground to show perimeter fence as future.
- B. **UPDATE** Sheet L102 – Haverhill Elementary Playground to show corrected length of header pipe.
- C. **UPDATE** Sheet L101 – Covington Elementary Playground to adjust concrete perimeter around the group spinner.

PART 4 – QUESTIONS & ANSWERS

- A. UNUSED

END OF ADDENDUM 4

To: Metropolitan School District of Southwest Allen County
4824 Homestead Road
Fort Wayne, IN 46814

From (Bidder): _____

Address: _____

Telephone No.: _____

Date of Bid Preparation: **7th day of April, 2026.**

The undersigned, having become familiar with all conditions of the project sites, and having examined and become fully cognizant of the Project Manual and all associated Drawings and Addenda, hereby agrees to furnish all labor, materials, equipment, fixtures and incidentals required for the construction of the Project in conformance with the intent of the Construction Documents.

This specific Bid Form is related solely to providing INSTALLATION OF PLAY EQUIPMENT + INSTALLATION OF PLAY TURF + GENERAL TRADES components of the project. The Owner has reviewed playground and turf products submitted on March 24, 2026 and identified preferred partners. Official notification is made via Addendum #4 and listed on the Bid Form below.

Pursuant to these requirements, the undersigned submits the following Bids/Proposals, which include all applicable taxes, overhead and profit. Multiple combinations Bids/Proposals are under consideration. Analysis of Bids/Proposals will be conducted by district administrators and building leaders in concert with their design consultant. Their decision(s) shall be considered final and binding, and Respondents agree by submission of a Bid/Proposal to these stipulations.

(remainder of this sheet intentionally blank)

COMBO PROPOSAL – ALL INSTALLATION + GENERAL TRADES SCOPE, provide all Installation + General Trades scope for all three (3) facilities in a single, combined response. For the Playground Turf portion of the work, the Bidder shall assume features previously identified as alternate enhancements, including but not limited to play mounds, funserts, and EPDM half sphere orbs, will be part of the combo pricing for installation and general trades pricing.. For the Playground Equipment, installation and general trades pricing shall include all base bid scope. See individual alternate equipment enhancements A & B below. Price shall be lump sum.

Scenario 1: All General Trades + Installation, assumes using **Landscape Structures** as the selected play equipment partner and **ForeverLawn, Inc** as the selected play turf partner.

_____ Dollars (\$_____.)

Scenario 2: All General Trades + Installation, assumes using **Landscape Structures** as the selected play equipment partner and **CSSS, LLC** as the selected play turf partner.

_____ Dollars (\$_____.)

ALTERNATE BID A, Provide the differential cost for installation and general trades related to delivering a 20'x20' Rectangular Hip Shelter, as manufactured by RCP Shelters. Price shall be lump sum for a single quantity. The Owner reserves the right to request multiple quantities.

_____ Dollars (\$_____.)

ALTERNATE BID B, Provide the differential cost for installation and general trades related to delivering a "We-Go-Swing," as manufactured by LSI, at Haverhill Elementary only. Price shall be lump sum.

_____ Dollars (\$_____.)

Bidders shall attach to this Bid Form the following documents:

- A fully executed Form 96, including the Non-Collusion Affidavit
- Appropriate Bid Security, as described in the Notice to Bidders

UNIT PRICING

The Owner anticipates adding miscellaneous scope to the extent budget permits, via Unit Prices listed below. Include price per unit of measurement for materials or services potentially adjusted in the Contract Sum by appropriate modification. Unit prices shall include all necessary material, plus cost for delivery, installation, insurance, overhead, and profit.

- A. Unit Price A – Add additional **Concrete Pedestrian Sidewalk** at 4" thickness. Include excavation, base preparation, and required materials and labor to expand pedestrian pavements. Assume areas affected will be no less than 1,000 square foot or greater in scope enhancement.

_____ per square foot

Time of Completion:

Presuming a Notice to Proceed is issued no later than April 17, 2026; the undersigned affirms that all work of this contract shall be substantially complete as follows:

<u>Haverhill Elementary</u>	by September 4, 2026	--or--	_____
<u>Aboite Elementary</u>	by September 18, 2026	--or--	_____
<u>Covington Elementary</u>	by October 2, 2026	--or--	_____

Staging may begin on May 20, 2026. Mobilization of equipment and any construction activities that could disrupt daily use of the site shall occur on or immediately after May 28, 2026.

Time is of the essence. Should a Respondent be capable of achieving more aggressive substantial completion commitment for one or more facility, please write-in that date in the blank(s) provided above. Schedule is a major determining factor of evaluation.

Allowance:

Bidder acknowledges by submission of this Bid that **Allowance No. 1** is included within their Base Bid.

Addenda:

Receipt of Addenda issued to the Drawings and Project Manual is hereby acknowledged:

Addenda Nos.: _____

Supervisory Assignments:

Please indicate below the names of individual(s) responsible for Project Supervision:

(remainder of this sheet intentionally blank)

Individuals and Sole Proprietors complete below:

IN TESTIMONY WHEREOF, the Bidder (an Individual) has hereunto set his hand this **7th day of April, 2026.**

Signature of the Individual Bidder: _____

Firms and Partnerships complete below:

IN TESTIMONY WHEREOF, the Bidder (a firm or partnership) has hereunto set their hands **7th day of April, 2026.**

Name of firm or partnership: _____

By: _____

By: _____

Subscribed and Sworn to before me by
this **7th day of April, 2026.**

My commission expires: _____

Corporations complete below:

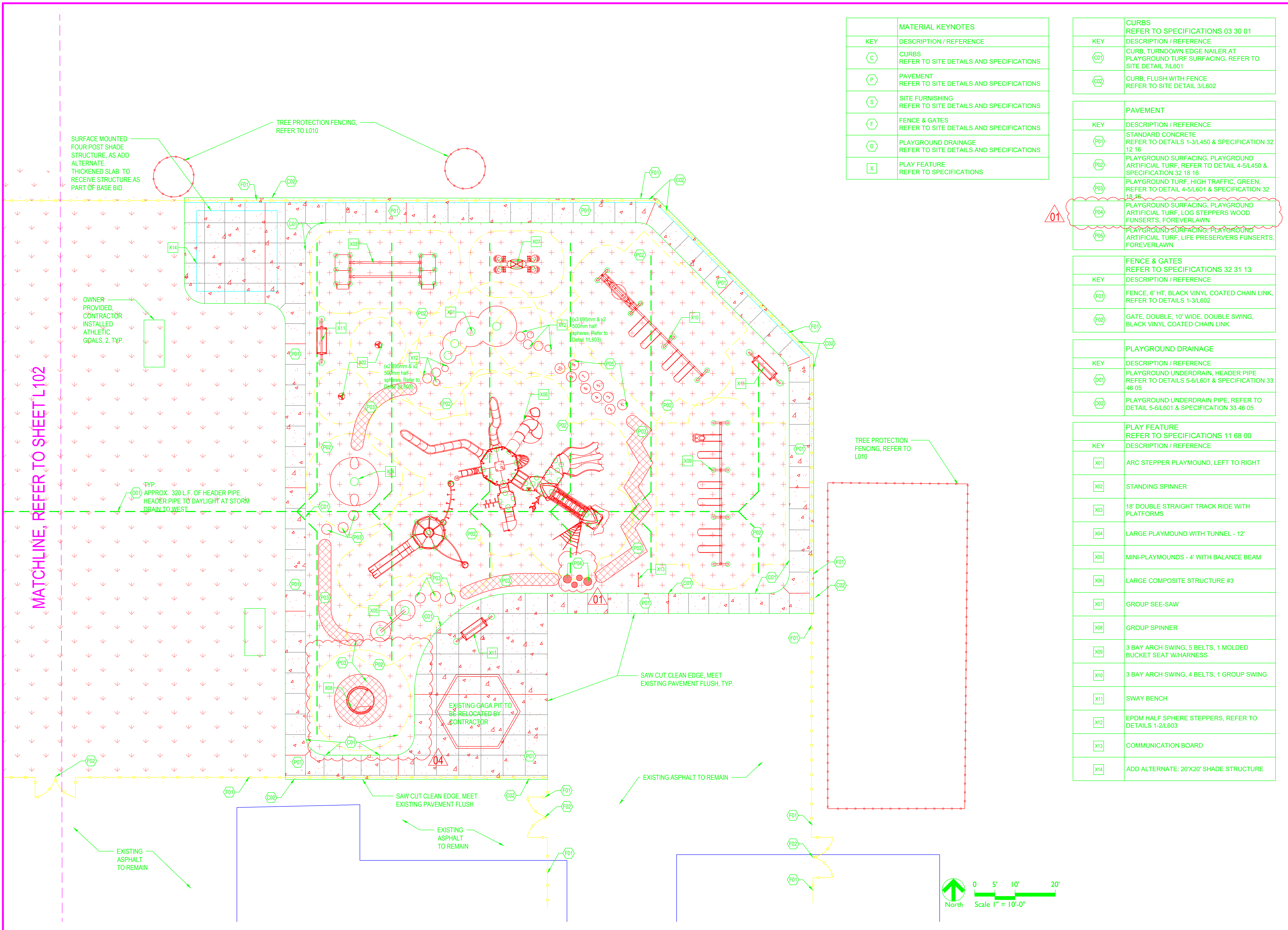
IN TESTIMONY WHEREOF, the Bidder (a Corporation) has caused this proposal to be signed by its President and Secretary, and affixed its Corporate Seal, this **7th day of April, 2026.**

Name of corporation: _____

President: _____

Secretary: _____

END OF SECTION



MATERIAL KEYNOTES	
KEY	DESCRIPTION / REFERENCE
C	CURBS REFER TO SITE DETAILS AND SPECIFICATIONS
P	PAVEMENT REFER TO SITE DETAILS AND SPECIFICATIONS
S	SITE FURNISHING REFER TO SITE DETAILS AND SPECIFICATIONS
F	FENCE & GATES REFER TO SITE DETAILS AND SPECIFICATIONS
D	PLAYGROUND DRAINAGE REFER TO SITE DETAILS AND SPECIFICATIONS
X	PLAY FEATURE REFER TO SPECIFICATIONS

CURBS	
KEY	DESCRIPTION / REFERENCE
C01	CURB, TURNDOWN EDGE NAILER AT PLAYGROUND TURF SURFACING, REFER TO SITE DETAIL 7/L601
C02	CURB, FLUSH WITH FENCE REFER TO SITE DETAIL 3/L602

PAVEMENT	
KEY	DESCRIPTION / REFERENCE
P01	STANDARD CONCRETE REFER TO DETAILS 1-3/L450 & SPECIFICATION 32 12 16
P02	PLAYGROUND SURFACING, PLAYGROUND ARTIFICIAL TURF, REFER TO DETAIL 4-5/L450 & SPECIFICATION 32 18 16
P03	PLAYGROUND TURF, HIGH TRAFFIC, GREEN, REFER TO DETAIL 4-5/L601 & SPECIFICATION 32 18 16
P04	PLAYGROUND SURFACING, PLAYGROUND ARTIFICIAL TURF, LOG STEPPERS WOOD FUNSERTS, FOREVERLAWN
P05	PLAYGROUND SURFACING, PLAYGROUND ARTIFICIAL TURF, LIFE PRESERVERS FUNSERTS, FOREVERLAWN

FENCE & GATES	
KEY	DESCRIPTION / REFERENCE
F01	FENCE, 6' HT, BLACK VINYL COATED CHAIN LINK, REFER TO DETAILS 1-3/L602
F02	GATE, DOUBLE, 10' WIDE, DOUBLE SWING, BLACK VINYL COATED CHAIN LINK

PLAYGROUND DRAINAGE	
KEY	DESCRIPTION / REFERENCE
D01	PLAYGROUND UNDERDRAIN, HEADER PIPE REFER TO DETAILS 5-6/L601 & SPECIFICATION 33 46 05
D02	PLAYGROUND UNDERDRAIN PIPE, REFER TO DETAIL 5-6/L601 & SPECIFICATION 33 46 05

PLAY FEATURE	
KEY	DESCRIPTION / REFERENCE
X01	ARC STEPPER PLAYGROUND, LEFT TO RIGHT
X02	STANDING SPINNER
X03	18' DOUBLE STRAIGHT TRACK RIDE WITH PLATFORMS
X04	LARGE PLAYGROUND WITH TUNNEL - 12'
X05	MINI-PLAYGROUNDS - 4' WITH BALANCE BEAM
X06	LARGE COMPOSITE STRUCTURE #3
X07	GROUP SEE-SAW
X08	GROUP SPINNER
X09	3 BAY ARCH SWING, 5 BELTS, 1 MOLDED BUCKET SEAT W/HARNES
X10	3 BAY ARCH SWING, 4 BELTS, 1 GROUP SWING
X11	SWAY BENCH
X12	EPDM HALF SPHERE STEPPERS, REFER TO DETAILS 1-2/L603
X13	COMMUNICATION BOARD
X14	ADD ALTERNATE: 20'X20' SHADE STRUCTURE



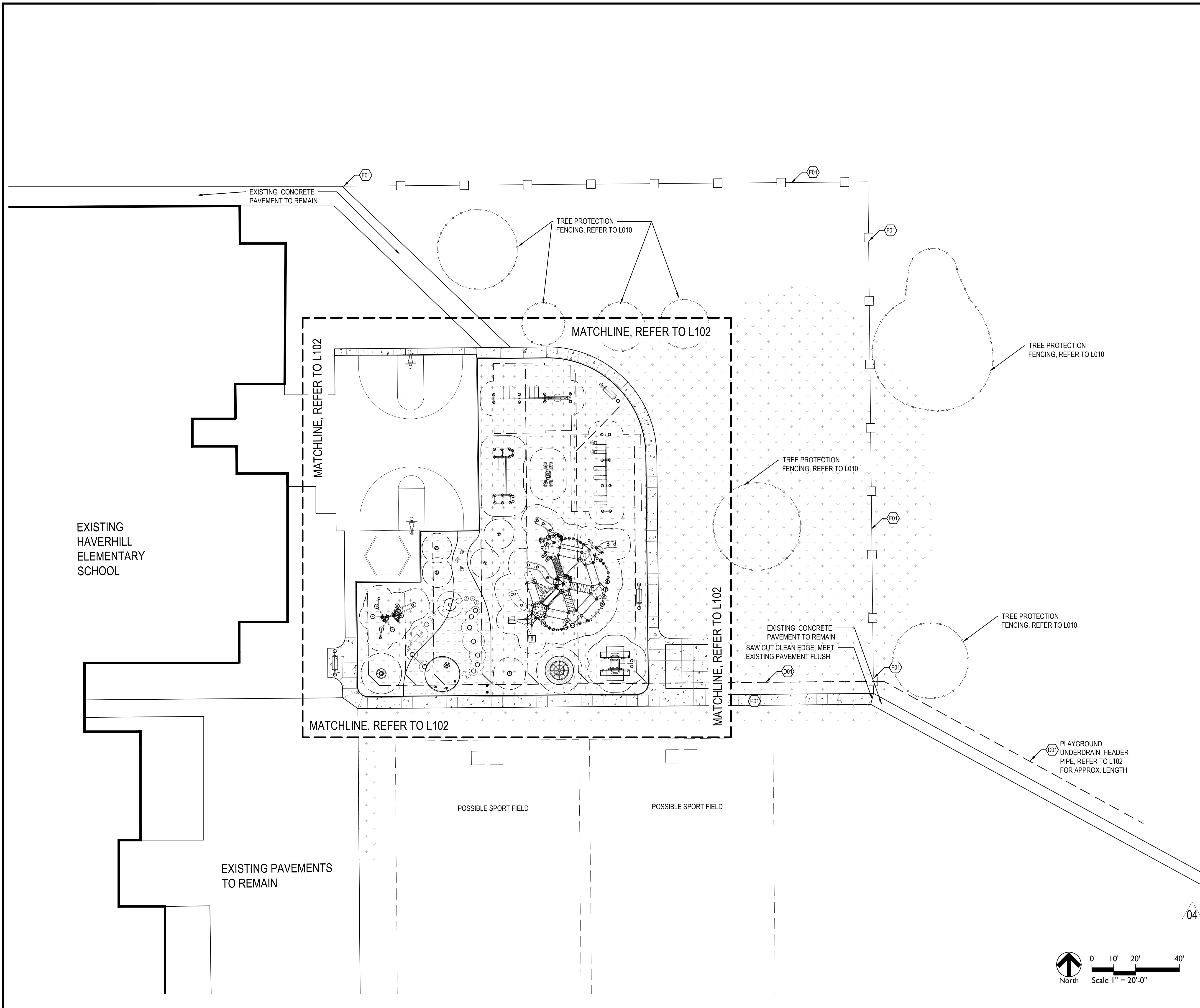
CONSTRUCTION DOCUMENTS
COVINGTON ELEMENTARY SCHOOL
 2430 W Hamilton Rd S. Fort Wayne, IN 46814
 MATERIALS AND NOTES PLAN

Revision	Date	Description
01	03/09/2026	ADDENDUM 1

Date: 2025/02/26
 Project No: 25-1943
 Drawn by: DLF | SG
 Checked by: LM

These Drawings and Specifications, and all copies thereof are and shall remain the property and copyright of the Landscape Architect. They shall not be used on any other Project or Work without prior written permission from the Landscape Architect.

Sheet No:
L101



MATERIAL KEYNOTES	
KEY	DESCRIPTION / REFERENCE
C	CURBS REFER TO SITE DETAILS AND SPECIFICATIONS
P	PAVEMENT REFER TO SITE DETAILS AND SPECIFICATIONS
S	SITE FURNISHING REFER TO SITE DETAILS AND SPECIFICATIONS
F	FENCE & GATES REFER TO SITE DETAILS AND SPECIFICATIONS
D	PLAYGROUND DRAINAGE
X	PLAY FEATURE REFER TO SPECIFICATIONS

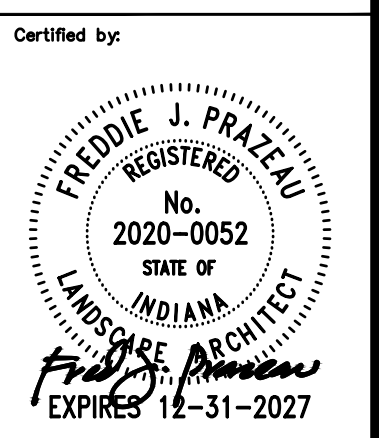
CURBS REFER TO SPECIFICATIONS 03 30 01	
KEY	DESCRIPTION / REFERENCE
C01	CURB, TURNDOWN EDGE NAILER CURB AT PLAYGROUND TURF SURFACING, REFER TO SITE DETAIL 6/L601
C02	CURB, POST NAILER AT EXISTING CONCRETE, REFER TO SITE DETAIL 7/L601
C03	CURB, POST NAILER AT EXISTING ASPHALT, REFER TO SITE DETAIL 7-8/L601

PAVEMENT	
KEY	DESCRIPTION / REFERENCE
P01	STANDARD CONCRETE, REFER TO DETAILS 1-3/L601 & SPECIFICATION 32 13 16
P02	PLAYGROUND TURF, GREEN, REFER TO DETAIL 4-5/L601 & SPECIFICATION 32 18 16
P03	PLAYGROUND TURF, BLUE, REFER TO DETAIL 4-5/L601 & SPECIFICATION 32 18 16
P04	PLAYGROUND TURF, YELLOW FISH FUNSERTS, FOREVERLAWN, REFER TO DETAIL 4-5/L601 & SPECIFICATION 32 18 16
P05	PLAYGROUND TURF, LIFE PRESERVERS FUNSERTS, FOREVERLAWN, REFER TO DETAIL 4-5/L601 & SPECIFICATION 32 18 16
P06	PLAYGROUND TURF, HIGH TRAFFIC, GREEN, REFER TO DETAIL 4-5/L601 & SPECIFICATION 32 18 16

PLAY FEATURE REFER TO SPECIFICATIONS 11 68 00	
KEY	DESCRIPTION / REFERENCE
X01	ZIGZAG STEPPER "S" PLAYGROUND
X02	SEATED SPINNER, 5-12 YEAR OLDS
X03	GROUP BOUNCER
X04	MINI-PLAYGROUNDS - 4' WITH BALANCE BEAM
X05	GROUP SPINNER
X06	LARGE COMPOSITE STRUCTURE #2
X07	18' DOUBLE STRAIGHT TRACK RIDE WITH PLATFORMS
X08	GROUP SEE-SAW
X09	STANDING SPINNER
X10	3 BAY ARCH SWING, 4 BELTS, 2 MOLDED BUCKET SEATS W/ HARNESS
X11	ADD ALTERNATE: ACCESSIBLE GROUP SWING
X12	3 BAY ARCH SWING, 4 BELTS, 1 GROUP SWING
X13	SWAY BENCH
X14	LARGE PLAYGROUND WITH TUNNEL - 12'
X15	MEDIUM PLAYGROUND WITH SLIDE - 8'
X16	SEATED SPINNER, 2-5 YEAR OLDS
X17	MUSICAL INSTRUMENT, TYPE 1
X18	MUSICAL INSTRUMENT, TYPE 2
X19	SMALL COMPOSITE STRUCTURE WITH SLIDE, 2-5 YEAR OLDS
X20	COMMUNICATION BOARD
X21	ADD ALTERNATE: 20'x20' SHADE STRUCTURE

FENCES & GATES REFER TO SPECIFICATIONS 32 31 13	
KEY	DESCRIPTION / REFERENCE
F01	FUTURE FENCE, 4' HT. BLACK VINYL COATED CHAIN LINK

PLAYGROUND DRAINAGE REFER TO SPECIFICATIONS 33 46 05	
KEY	DESCRIPTION / REFERENCE
D00	PLAYGROUND UNDERDRAIN, HEADER PIPE REFER TO DETAILS 5-6/L601
D01	PLAYGROUND UNDERDRAIN PIPE, REFER TO DETAIL 5-6/L601



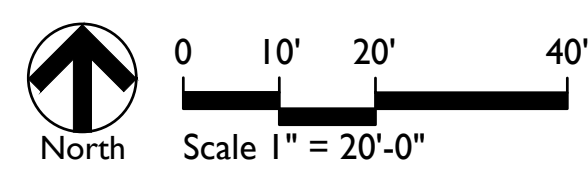
CONSTRUCTION DOCUMENTS
HAVERHILL ELEMENTARY SCHOOL
 4725 Weatherside Run, Fort Wayne, IN 46804
 MATERIALS AND NOTES PLAN

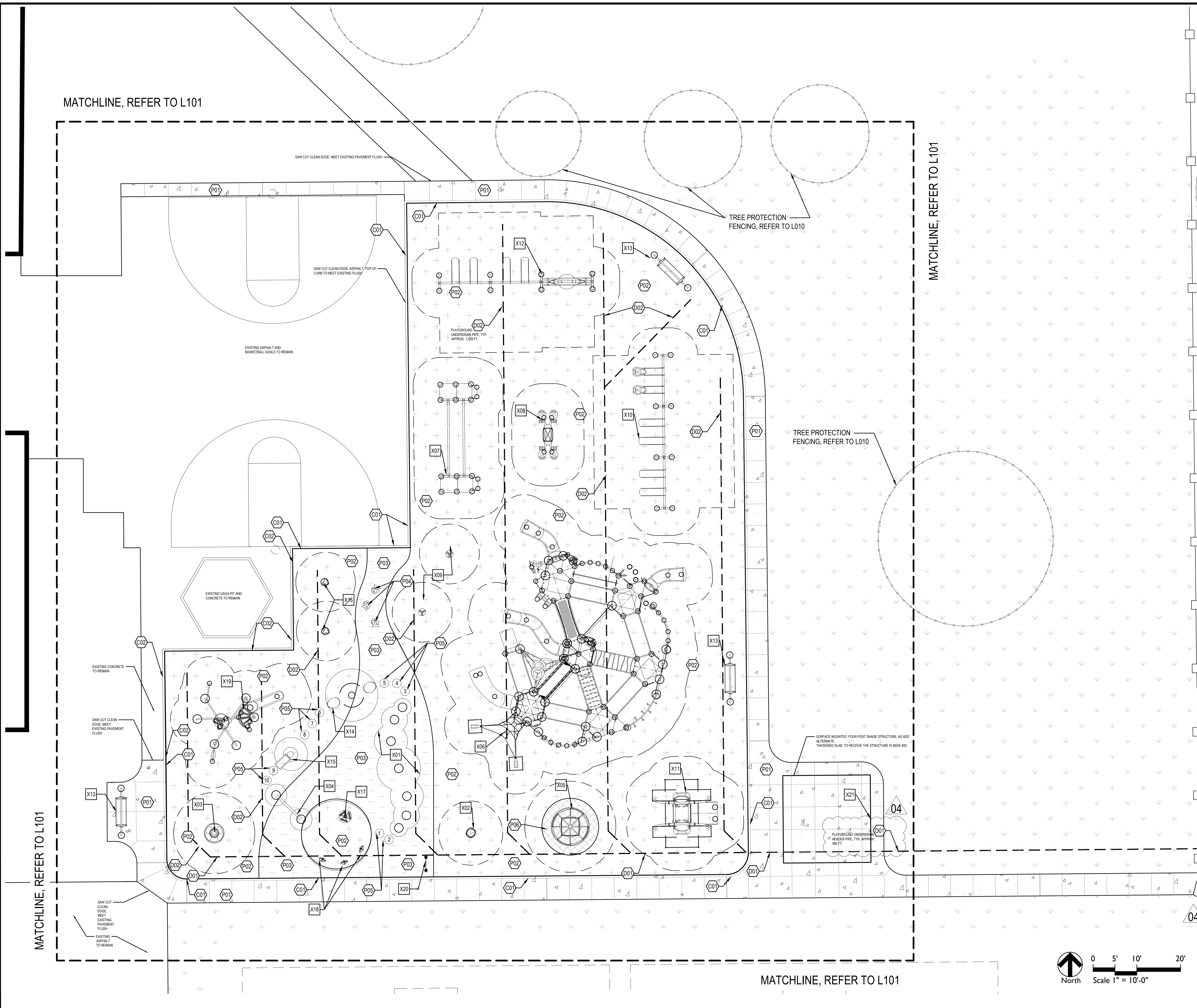
Revision	Date	Description
01	03/09/2026	Addendum 1
02	03/13/2026	Addendum 2
03	03/19/2026	Addendum 3
04	03/31/2026	Addendum 4

Date: 2026/02/26
 Project No: 25-1943
 Drawn by: DLF | SG
 Checked by: LM

These Drawings and Specifications, and all copies thereof are and shall remain the property and copyright of the Landscape Architect. They shall be used only with respect to this Project and are not to be used on any other Project or Work without prior written permission from the Landscape Architect.

Sheet No:
L101





MATERIAL KEYNOTES	
KEY	DESCRIPTION / REFERENCE
C	CURBS REFER TO SITE DETAILS AND SPECIFICATIONS
P	PAVEMENT REFER TO SITE DETAILS AND SPECIFICATIONS
S	SITE FURNISHING REFER TO SITE DETAILS AND SPECIFICATIONS
F	FENCE & GATES REFER TO SITE DETAILS AND SPECIFICATIONS
D	PLAYGROUND DRAINAGE
X	PLAY FEATURE REFER TO SPECIFICATIONS

CURBS REFER TO SPECIFICATIONS 03 30 01	
KEY	DESCRIPTION / REFERENCE
C01	CURB, TURNDOWN EDGE NAILER CURB AT PLAYGROUND TURF SURFACING, REFER TO SITE DETAIL 6L601
C02	CURB, POST NAILER AT EXISTING CONCRETE, REFER TO SITE DETAIL 7L601
C03	CURB, POST NAILER AT EXISTING ASPHALT, REFER TO SITE DETAIL 7-8L601

PAVEMENT	
KEY	DESCRIPTION / REFERENCE
P01	STANDARD CONCRETE, REFER TO DETAILS 1-3L601 & SPECIFICATION 32 13 16
P02	PLAYGROUND TURF, GREEN, REFER TO DETAIL 4-5L601 & SPECIFICATION 32 18 16
P03	PLAYGROUND TURF, BLUE, REFER TO DETAIL 4-5L601 & SPECIFICATION 32 18 16
P04	PLAYGROUND TURF, YELLOW FISH FUNSETTS, FOREVERLAWN, REFER TO DETAIL 4-5L601 & SPECIFICATION 32 18 16
P05	PLAYGROUND TURF, LIFE PRESERVERS FUNSETTS, FOREVERLAWN, REFER TO DETAIL 4-5L601 & SPECIFICATION 32 18 16
P06	PLAYGROUND TURF, HIGH TRAFFIC, GREEN, REFER TO DETAIL 4-5L601 & SPECIFICATION 32 18 16

PLAY FEATURE REFER TO SPECIFICATIONS 11 68 00	
KEY	DESCRIPTION / REFERENCE
X01	ZIGZAG STEPPER "S" PLAYGROUND
X02	SEATED SPINNER, 5-12 YEAR OLDS
X03	GROUP BOUNCER
X04	MINI-PLAYMONDS - 4' WITH BALANCE BEAM
X05	GROUP SPINNER
X06	LARGE COMPOSITE STRUCTURE #2
X07	18' DOUBLE STRAIGHT TRACK RIDE WITH PLATFORMS
X08	GROUP SEE-SAW
X09	STANDING SPINNER
X10	3 BAY ARCH SWING, 4 BELTS, 2 MOLDED BUCKET SEATS W/ HARNESS
X11	ADD ALTERNATE: ACCESSIBLE GROUP SWING
X12	3 BAY ARCH SWING, 4 BELTS, 1 GROUP SWING
X13	SWAY BENCH
X14	LARGE PLAYMOND WITH TUNNEL - 12'
X15	MEDIUM PLAYMOND WITH SLIDE - 8'
X16	SEATED SPINNER, 2-5 YEAR OLDS
X17	MUSICAL INSTRUMENT, TYPE 1
X18	MUSICAL INSTRUMENT, TYPE 2
X19	SMALL COMPOSITE STRUCTURE WITH SLIDE, 2-5 YEAR OLDS
X20	COMMUNICATION BOARD
X21	ADD ALTERNATE: 20'x20' SHADE STRUCTURE

FENCES & GATES REFER TO SPECIFICATIONS 32 31 13	
KEY	DESCRIPTION / REFERENCE
F01	FUTURE FENCE, 4' HT. BLACK VINYL COATED CHAIN LINK

PLAYGROUND DRAINAGE REFER TO SPECIFICATIONS 33 46 05	
KEY	DESCRIPTION / REFERENCE
D01	PLAYGROUND UNDERDRAIN, HEADER PIPE REFER TO DETAILS 5-6L601
D02	PLAYGROUND UNDERDRAIN PIPE, REFER TO DETAIL 5-6L601



5825 Lawton Loop E. Dr. | Indianapolis, IN 46216
317-485-6900 | www.context-design.com

Certified by:



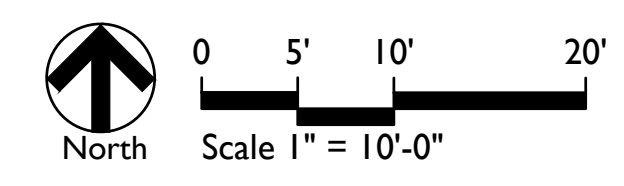
CONSTRUCTION DOCUMENTS
HAVERHILL ELEMENTARY SCHOOL
4725 Weatherside Run, Fort Wayne, IN 46804
MATERIALS AND NOTES PLAN
PLAYGROUND ENLARGEMENT

Revision	Date	Description
01	03/09/2026	Addendum 1
02	03/13/2026	Addendum 2
03	03/19/2026	Addendum 3
04	03/31/2026	Addendum 4

Date: 2026/02/26
Project No: 25-1943
Drawn by: DLF | SG
Checked by: LM

These Drawings and Specifications, and all copies thereof are and shall remain the property and copyright of the Landscape Architect. They shall be used only with respect to the Project and are not to be used on any other Project or Work without prior written permission from the Landscape Architect.

Sheet No:
L102



MATCHLINE, REFER TO L101

MATCHLINE, REFER TO L101

MATCHLINE, REFER TO L101

MATCHLINE, REFER TO L101