

ADDENDUM NO. 2

Prairie Vista Elementary School – Interior Improvements

Penn-Harris-Madison School Corporation  
Mishawaka, Indiana

Project No. 225036.00

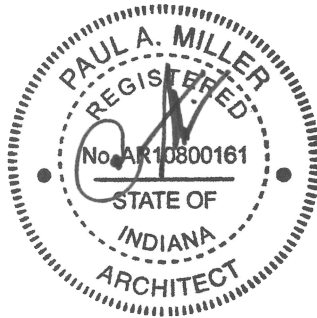
Index of Contents

Addendum No. 2, 2 items, 1 page  
Revised Drawing Sheets: A1.01, A1.02, and A5.02

April 7, 2025

I hereby certify that this Addendum was prepared by me or under my direct supervision and that I am a duly registered Architect/Engineer under the Laws of the State of Indiana.

FANNING/HOWEY ASSOCIATES, INC.  
ARCHITECTS/ENGINEERS/CONSULTANTS



Paul A. Miller, License No. AR10800161  
Expiration Date: 12/31/2027

TO: ALL BIDDERS OF RECORD

ADDENDUM NO. 2 to Drawings and Project Manual, dated March 16, 2026, for Penn-Harris-Madison School Corporation, 55900 Bittersweet Road, Mishawaka, Indiana 46545; as prepared by Fanning/Howey Associates, Inc., Indianapolis, Indiana.

This Addendum shall hereby be and become a part of the Contract Documents the same as if originally bound thereto.

The following clarifications, amendments, additions, revisions, changes, and modifications change the original Contract Documents only in the amount and to the extent hereinafter specified in this Addendum.

Each bidder shall acknowledge receipt of this Addendum in his proposal or bid.

NOTE: Bidders are responsible for becoming familiar with every item of this Addendum. (This includes miscellaneous items at the very end of this Addendum.)

RE: ALL BIDDERS

ITEM NO. 1. PROJECT MANUAL, SECTION 06 41 16 – PLASTIC-LAMINATE-FACED ARCHITECTURAL CABINETS

A. Add 2.5, P., as follows:

“P. Boot Tray: Polypropelene or similar synthetic material in size required to fit into bottom of coat storage units. Integral vertical sides extending above bottom of tray 1 – 3 inches.”

ITEM NO. 2. REVISED DRAWING SHEETS:

A. Drawing Sheets: A1.01, A1.02, and A5.02 have been revised, dated 4/7/25, and are included with and hereby made a part of this Addendum. These Drawings supersede the original documents.

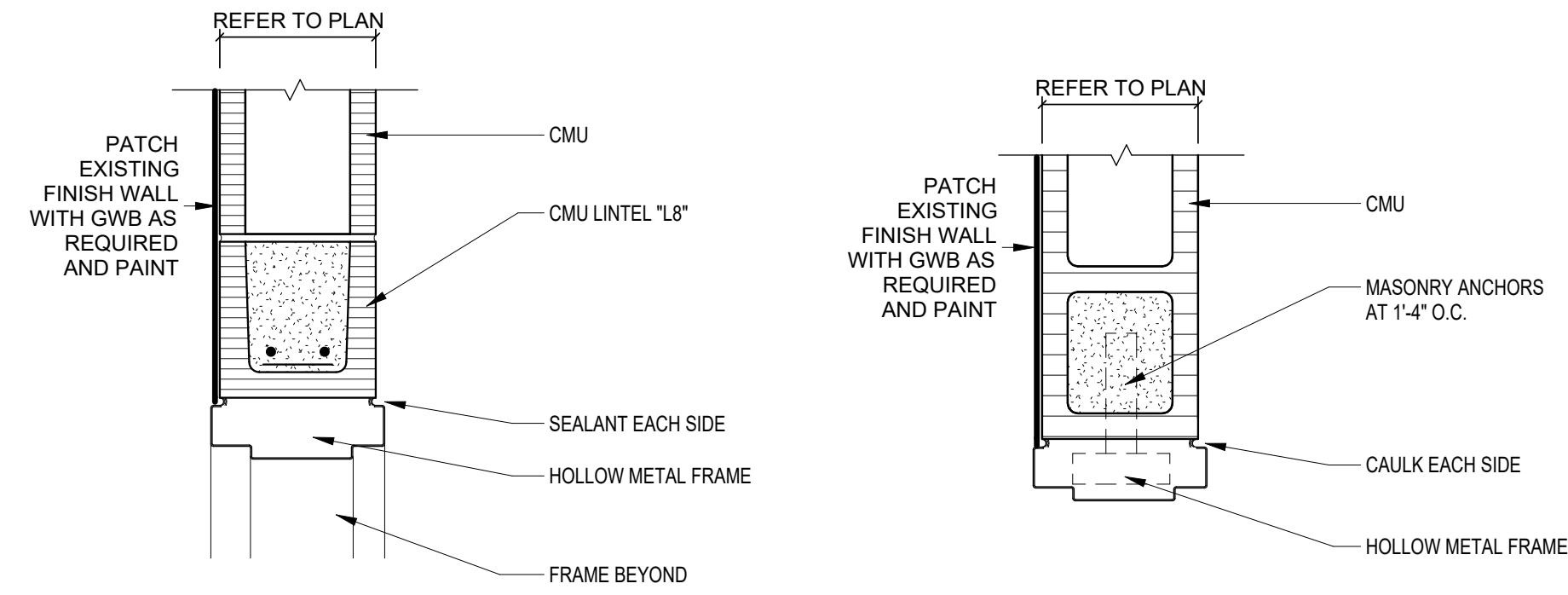
END OF ADDENDUM





DOOR MARK	DOOR AND FRAME SCHEDULE										DOOR MARK		
	DOORS		FRAME					HARDWARE				REMARKS	
	DOOR SIZE (WxH)	DOOR TYPE	FRAME MATERIAL	FRAME ELEVATION	JAMB DEPTH	HEAD	JAMB	SILL	FIRE RATING	SET NO.			KEYSIDE ROOM
A54	3'-0" x 7'-2"	F WD	HM	F1	9 3/4"	1-A5.02	2-A5.02	-	60 M	1	A54		A54

FINISH FACES TO ALIGN WITH EXISTING FINISH FACE

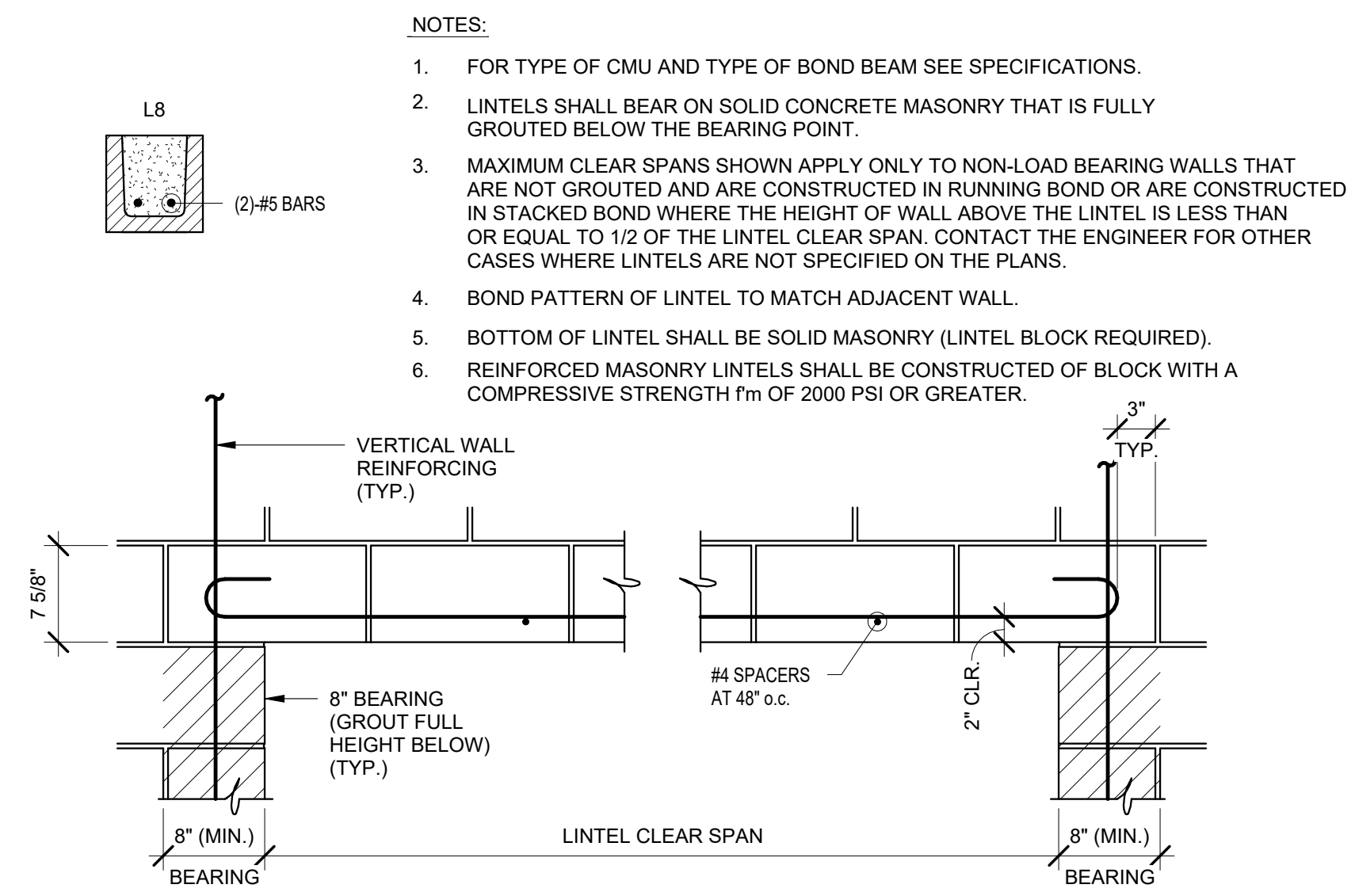


**1 HEAD**  
SCALE: 1 1/2" = 1'-0"

**2 JAMB**  
SCALE: 1 1/2" = 1'-0"

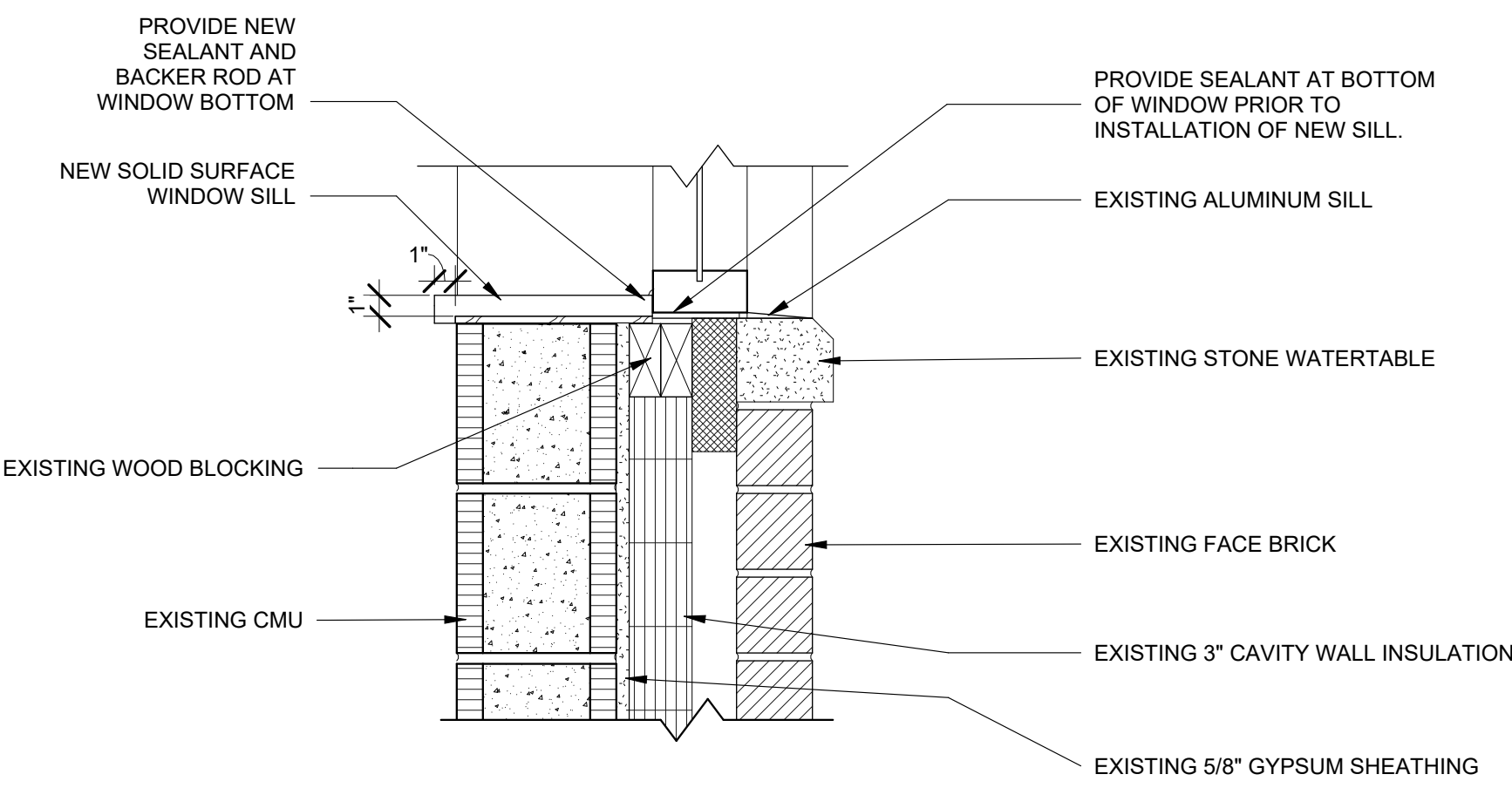
**Door Hardware** (set number #1)

Qty	Description	Catalog Number	Finish	Mr
3 Ea	Hinge	5881HW Size, Qty, NRP as required (see Specs)	652	lve
1 Ea	Privacy Lock	L9040 03ALL583-363 OS-OCC	626	Sch
1 Ea	W/Outside Indicator Permanent Core	Marshall Best Security, 7-Pin, Small Format Interchangeable Core	626	Mar
1 Ea	Surface Closer	4040XP Rng	689	LCN
1 Ea	Kick Plate	8400 10" X 1 1/2" LDW B-CS	630	lve
1 Ea	Mop Plate	8400 4" X 1" LDW B-CS	630	lve
1 Ea	Wall Stop	WS406407CVX	630	lve
1 Ea	Silencer	Sr64	630	lve

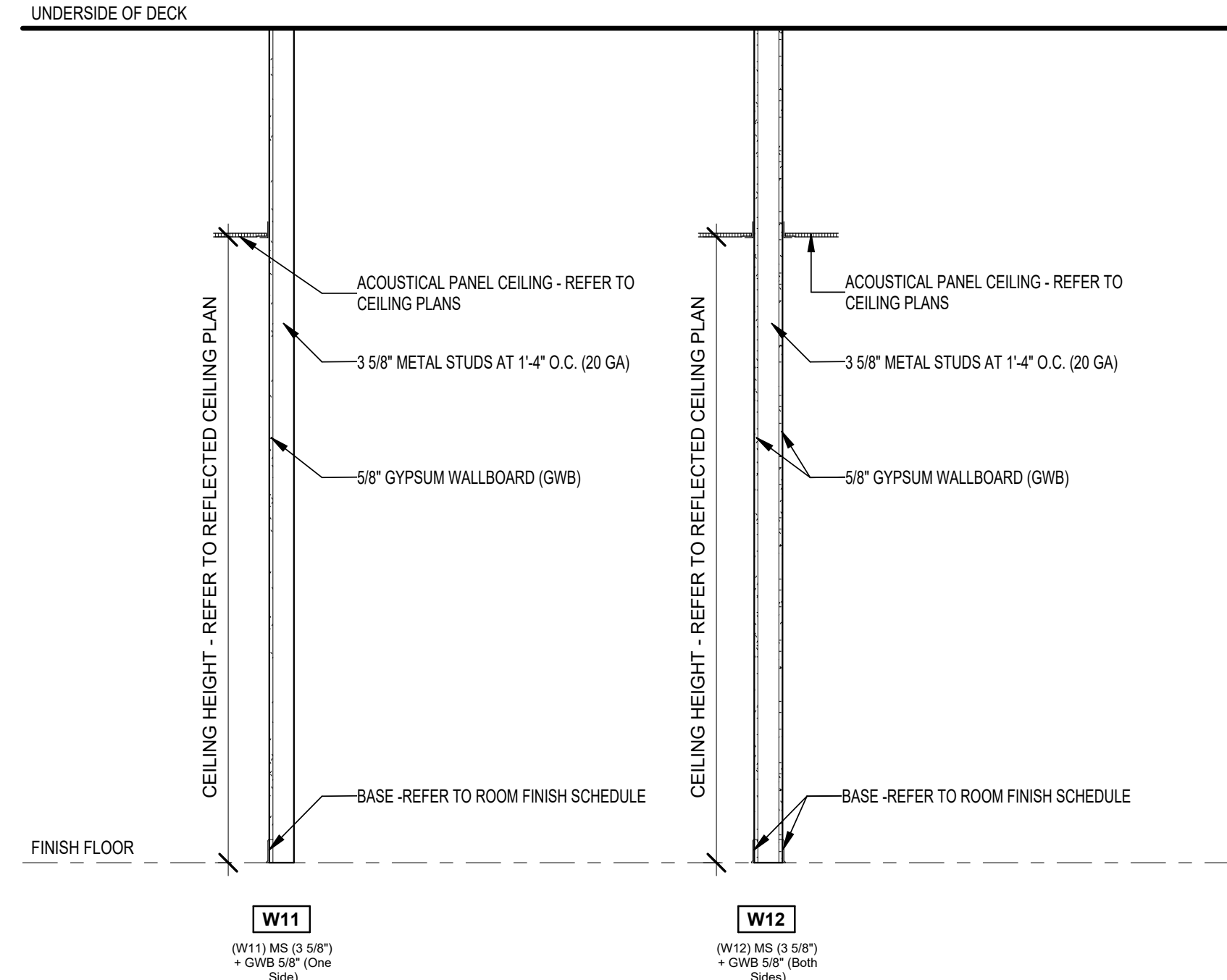


SHORT SPAN REINFORCED MASONRY LINTELS (MAXIMUM CLEAR SPAN 7'-4")

**TYPICAL REINFORCED MASONRY LINTEL**



**3 SOLID SURFACE WINDOW SILL**  
SCALE: 1 1/2" = 1'-0"



**4 WALL TYPES**  
SCALE: 1/2" = 1'-0"

**GYPSON WALLBOARD SCHEDULE**

LOCATION	TYPE	MOISTURE/MOLD-RESISTANT GYPSON BOARD (MWRB)	ABUSE RESISTANT AND MOISTURE/MOLD-RESISTANT GYPSON BOARD (ARB) TO 6'0" AFF	MOISTURE/MOLD-RESISTANT GYPSON BOARD ABOVE 6'0" AFF	GLASS/WATER RESISTANT TILE BACKING BOARD BEHIND AREAS TO RECEIVE TILE (WET WALLS)	ACoustically ENHANCED GYPSON BOARD (AEBG)
CLASSROOMS, LABS, COLLABORATION, AND OTHER STUDENT OCCUPIED SPACES		●				
STUDENT RESTROOMS (EXCEPT WET WALLS)		●				●
SHOWERS AND PLUMBING FIXTURE WALLS IN RESTROOMS (WET WALLS)					●	
CAFETERIA / DINING, AUDITORIUM, MULTIPURPOSE, MEDIA CENTER						●
STAFF OFFICES, STAFF HALLWAYS, WORKROOMS, RECEPTION AND WAITING AREAS, CLINIC AND COUNSELING		●				
STAFF AND SINGLE STALL RESTROOMS (EXCEPT WET WALLS THAT RECEIVE TILE)		●				●
LOBBIES, COMMONS, VESTIBULES, CORRIDORS, STAIRWELLS AND HALLWAYS						●
MECHANICAL, ELECTRICAL, DATA, CUSTODIAL AND STORAGE ROOMS		●				
BULKHEADS AND CEILINGS		●				

- NOTES:  
 1. WET WALLS: WALLS WITH PLUMBING FIXTURES MOUNTED ON THEM AND WALLS IN SHOWER OR SIMILAR AREAS THAT WILL BE INTERMITTENTLY WET.  
 2. REFER TO INTERIOR DRAWINGS FOR LOCATIONS DIRECTED TO RECEIVE TILE.  
 3. THIS IS A MASTER LIST AND ALL APPLICATIONS MAY NOT BE REQUIRED.

**LIST OF FINISHES** REFER TO FINISH DRAWINGS

**FLOOR MATERIALS**

MATERIAL ABBREVIATION	MANUFACTURER/STYLE	COLOR SELECTION
CART-1 (FIELD)	PATCRAFT: "SEE IT TO BELIEVE IT"	ALAKAZA 00412

• ALL SPECIFIED MANUFACTURERS MUST HAVE A MINIMUM EDGE WEIGHT OF 20 oz./yd.  
 • ALL CARPET BACKING TO HAVE A MOISTURE RESISTANT BARRIER.  
 • INSTALLATION METHOD TO BE 1/4 TURN.  
 • SUBMIT INSTALLATION DRAWINGS INDICATING LAYOUT OF CARPET TILE PRIOR TO INSTALLATION FOR APPROVAL.

**ENTRANCE CARPET TILE**

MATERIAL ABBREVIATION	MATERIAL/MANUFACTURER	COLOR SELECTION
ECT-1	PATCRAFT "WALK RIGHT IN IT"	EBONY 00595

**LUXURY VINYL TILE**

MATERIAL ABBREVIATION	MATERIAL/MANUFACTURER	COLOR SELECTION
LVT-1	PATCRAFT / SHAPE STUDY / PLANAR	LIGHT PLANAR 00115

• SIZE: 24" X 24"  
 • BRICK INSTALL  
 • MATCHES: 2025 CAFETERIA FLOORING

**LIST OF FINISHES**

SCALE: 1/4" = 1'-0"

**BASE MATERIALS** REFER TO A8 ARCH. DWG. SHEETS

MATERIAL ABBREVIATION	MATERIAL/MANUFACTURER	COLOR SELECTION
DRF-1	REFER TO SPECIFICATIONS	TBD

NOTE: AT LOCATIONS WHERE QUARRY TILE BASE WAS REMOVED, THE RESILIENT BASE WILL HAVE TO BE 6" H TO CONCEAL OLD ADHESIVES.

**RESILIENT BASE** COVE BASE

MATERIAL ABBREVIATION	MATERIAL/MANUFACTURER	COLOR SELECTION
RB-1	JOHNSONITE/TARKETT	63 BURNT UMBER

**CEILING FINISHES**

MATERIAL ABBREVIATION	MATERIAL/MANUFACTURER	SIZE/COLOR PROFILE
ACT-1 (CLASSROOM)	REFER TO SPECIFICATIONS	2'X2', WHITE, SQUARE EDGE
ACT-2 (CORRIDOR)	REFER TO SPECIFICATIONS	2'X2', WHITE, SQUARE EDGE
ACT-3 (RESTROOMS)	REFER TO SPECIFICATIONS	2'X2', WHITE, SQUARE EDGE

**WALL FINISHES** REFER TO A8 ARCH. DWG. SHEETS

MATERIAL ABBREVIATION	MATERIAL/MANUFACTURER	COLOR SELECTION
P-1 (FIELD)	SHERWIN WILLIAMS	SW7029 AGREEABLE GREY
P-2 (ACCENT 1 - MAUVE)	SHERWIN WILLIAMS	SW8170 ACIER
P-3 (ACCENT 2 - GREEN)	SHERWIN WILLIAMS	SW8467 KENDAL GREEN
P-4 (ACCENT 3 - PLUM)	SHERWIN WILLIAMS	SW8025 SOCIALIZE
P-5 (ACCENT 4 - BLUE)	SHERWIN WILLIAMS	SW9062 BLUEBIRD FEATHER
P-6 (ACCENT 5 - SCHOOL RED)	SHERWIN WILLIAMS	SW8608 RAVE RED
P-7 (ACCENT 6 - SCHOOL BLACK)	SHERWIN WILLIAMS	SW8258 TRICORN BLACK
P-8 (CEILING - WHITE)	SHERWIN WILLIAMS	SW7757 HIGHLY REFLECTIVE WHITE
P-9 (DOOR FRAMES)	SHERWIN WILLIAMS	SW7674 PEPPERCORN

**CERAMIC WALL TILE**

MATERIAL ABBREVIATION	MATERIAL/MANUFACTURER	COLOR SELECTION
CWT-1	DAL TILE "COLOR WHEEL"	TBD (3x6)

**MISCELLANEOUS FINISHES** REFER TO A8 ARCH. DWG. SHEETS

**INTERIOR WOOD DOORS/ INTERIOR WOOD TRIM**

- STAIN ALL WOOD DOORS, WOOD TRIM, ETC. TO MATCH PLASTIC LAMINATE, PL-1.
- WOOD SPECIES TO BE PLAIN SLICED WHITE MAPLE.
- PROVIDE WOOD STAIN SAMPLES FOR VERIFICATION.

**GROUT**

MATERIAL ABBREVIATION	MATERIAL/MANUFACTURER	COLOR SELECTION
GT-1 (CWT-1)	LATICRETE MAPEI TEC HYDROMENT	ARCHITECT TO SELECT FROM MANUFACTURER'S FULL RANGE OF STANDARD AND DESIGNER COLORS

**RESILIENT MOLDING ACCESSORIES**

MATERIAL ABBREVIATION	MATERIAL/MANUFACTURER	COLOR SELECTION
RMA-1	JOHNSONITE	63 BURNT UMBER

**PRAIRIE VISTA ELEMENTARY SCHOOL: INTERIOR IMPROVEMENTS**

15400 BRICK ROAD, GRANGER, IN 46630

**PENN-HARRIS-MADISON SCHOOL CORPORATION**

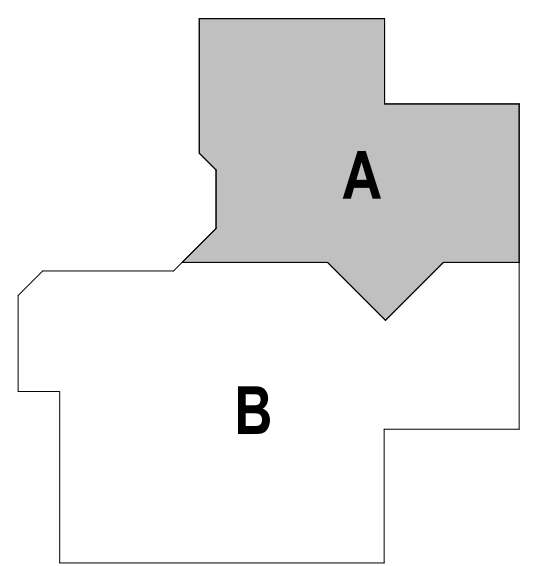


ARCHITECT



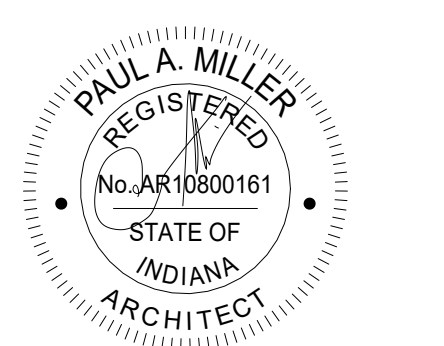
317-848-0966

WWW.FHAI.COM



**KEY PLAN**

CONSTRUCTION DOCUMENTS



PROJECT MANAGER: MKS  
 DRAWN BY: MKH  
 PROJECT NUMBER: 225036.00  
 PROJECT ISSUE DATE: March 16, 2026

REV. NO.	DESCRIPTION	DATE
2	ADDENDUM #2	4-7-26

DETAILS

**A5.02**