



Addendum No. 5
April 14, 2026

The following additions, clarifications and revisions have been made to the Contract Documents:

REVISIONS:

1. Revisions To Trade Package Manual
 - a. Section 00 24 13 Bid Packages:
 - 1) Delete grouting of base plates from Bid Package 01 – General Trades.
 - b. Section 00 41 00b – Bid Form 2 of 3
 - 1) Replace Bid Form 2 of 3 with attached Bid Form
2. Fanning/Howey Associates Addendum No. 5 dated April 14, 2026
 - a. Narrative
 - b. Revised Drawing Sheets

SECTION 00 41 00b - Bid Form 2 of 3
SUPPLEMENTAL BID FORM to FORM 96:

1. BID FORM

1.1 DESCRIPTION

- A. This form shall be used as a supplement to Indiana State Form 96 (2013), and shall be included by all bidders, within their sealed bid envelopes.
- B. The following documents shall be included with each Bidders Proposal to qualify as a responsible bid.
 - 1. FORM 96 (rev. 2013)
 - 2. Supplemental Bid Form to FORM 96 (BID FORM 2 OF 3)
 - 3. Section IV Contractor's Non-Collusion Affidavit
 - 4. 5% Bid Bond

1.2 BID INFORMATION

- A. **Bidding Subcontractor:** _____.
- B. **Project Name:** Nathaniel Jones Early Learning Center – Addition and Renovation
- C. **Project Location:** 7839 New Augusta Rd., Indianapolis, IN 46268
- D. **Owner:** MSD of Pike Township Schools
- E. **Architect:** Fanning Howey Associates Inc.
- F. **Architect Project Number:** 225036.00
- G. **Construction Manager:** CORE Construction
- H. **Construction Manager Project Number:** 25-10-913

1.3 SINGLE BID PACKAGE BID

- A. The undersigned Bidder, having carefully examined the Procurement and Contracting Requirements, Conditions of the Contract, Drawings, Specifications, and all subsequent Addenda, as prepared by Architect and the Architect's consultants, having visited the site, and being familiar with all conditions and requirements of the Work, hereby agrees to furnish all material, labor, equipment, and services for the following bid package **(check only the applicable bid package)**, including all scheduled allowances, necessary to complete the construction of above-named Project, according to the requirements of the Procurement and Contracting Documents, for the stipulated sum of:

- Bid Package 01 – GENERAL TRADES**
- Bid Package 03 – ASPHALT PAVING**
- Bid Package 04 – LANDSCAPING**
- Bid Package 09 – ARCHITECTURAL CASEWORK**
- Bid Package 11 – ALUMINUM STOREFRONT & GLAZING**
- Bid Package 12 – METAL STUDS, DRYWALL & CEILINGS**
- Bid Package 13 – SOFT FLOORING**
- Bid Package 14 – HARD FLOORING**
- Bid Package 15 – PAINTING**
- Bid Package 17 – FOOD SERVICE EQUIPMENT**
- Bid Package 19 – FIRE PROTECTION**

Dollars (\$ _____)

(WRITTEN) (NUMBERS)

1.4 COMBINED/MULTIPLE BID PACKAGES BID

- A. The undersigned Bidder, having carefully examined the Procurement and Contracting Requirements, Conditions of the Contract, Drawings, Specifications, and all subsequent Addenda, as prepared by Architect and the Architect's consultants, having visited the site, and being familiar with all conditions and requirements of the Work, hereby agrees to furnish all material, labor, equipment, and services for the following bid packages **(note applicable bid packages)**, including all scheduled allowances, necessary to complete the construction of above-named Project, according to the requirements of the Procurement and Contracting Documents, for the stipulated sum of:

- B. Bid Packages Included in Combination Bid: / / / /
INDICATE BID PACKAGE NUMBERS ABOVE

Dollars (\$ _____)

(WRITTEN) (NUMBERS)

1.5 BID GUARANTEE

- A. The undersigned Bidder agrees to execute a contract for this Work in the above amount and to furnish surety as specified within **10** days after a written Notice of Award, if offered within **60** days after receipt of bids, and on failure to do so agrees to forfeit to Owner the attached cash, cashier's check, certified check, U.S. money order, or bid bond, as liquidated damages for such failure, in the following amount constituting five percent (5%) of the Base Bid amount above.

- B. In the event Owner does not offer a Notice of Award within the time limits stated above, Owner will return to the undersigned the cash, cashier's check, certified check, U.S. money order, or bid bond.

1.6 TIME OF COMPLETION

- A. The undersigned Bidder proposes and agrees hereby to complete the Work of the Contract Documents as shown in the schedule Section 00 31 13 – Project Schedule.

1.7 ACKNOWLEDGEMENT OF ADDENDA

- A. The undersigned Bidder acknowledges receipt of and use of the following Addenda in the preparation of this Bid:
 - 1. Addendum No. 1, dated _____.
 - 2. Addendum No. 2, dated _____.
 - 3. Addendum No. 3, dated _____.
 - 4. Addendum No. 4, dated _____.
 - 5. Addendum No. 5, dated _____.
 - 6. Addendum No. 6, dated _____.
 - 7. Addendum No. 7, dated _____.

- B. Note all addenda issued. If addendum number is not applicable or was not issued for the project write "NA" or leave that line blank

1.8 ACKNOWLEDGEMENT OF SECTION 00 24 13.13 - BID PACKAGES

- A. The undersigned Bidder acknowledges receipt of and use of the following:
 - 1. "SECTION 00 24 13 – BID PACKAGES in the preparation of this Bid:

- B. Acknowledgement:
 - 1. Date of Acknowledgement: _____

 - 2. Signature: _____



1.9 ALTERNATES

A. Refer to Section 01 23 00 - 23 PROJECT SPECIFIC ALTERNATES for additional information.

B. Alternate BP 13-01 – Provide Moisture Resistant/Water-Proof Flooring Adhesive at Soft Flooring
_____ Dollars (\$ _____)

C. Alternate BP 14-01 – Provide Moisture Mitigation Measures for Tile Floors
_____ Dollars (\$ _____)

1.10 UNIT PRICES (N/A)

1.11 CONTRACTOR'S LICENSE

A. The undersigned further states that it is a duly licensed contractor for the type of work proposed, and that all fees, permits, etc., pursuant to submitting this proposal have been paid in full.

1.12 SUBMISSION OF BID

A. Respectfully submitted this ____ day of _____, 2026.

B. Submitted By: _____
(Name of Bidding Firm or Corporation)

C. Signature: _____
(Handwritten/Digital Signature)

D. Signed By: _____
(Type or Print Name)

E. Title: _____
(Owner/Partner/President/Vice President)

F. Street Address: _____

G. City, State, Zip: _____

H. Email: _____

I. Phone: _____

END OF SECTION 00 41 00b

ADDENDUM NO. 5

Nathaniel Jones Early Learning Center Addition and Expansion

MSD of Pike Township
Indianapolis, Indiana

Project No. 223216.00

Index of Contents

Addendum No. 5, 4 Items, 2 pages
Revised Drawing Sheets: A-201, A-202, and A-601

Date: April 14, 2026

I hereby certify that this Addendum was prepared by me or under my direct supervision and that I am a duly registered Architect/Engineer under the Laws of the State of Indiana.

FANNING/HOWEY ASSOCIATES, INC.
ARCHITECTS/ENGINEERS/CONSULTANTS



Paul A. Miller, License No. AR10800161
Expiration Date: 12/31/2027

TO: ALL BIDDERS OF RECORD

ADDENDUM NO. 5 to Drawings and Project Manual, dated March 13, 2026, for MSD of Pike Township, 3950 W. 56th Street, Indianapolis, Indiana 46278; as prepared by Fanning/Howey Associates, Inc., Indianapolis, Indiana. This Addendum shall hereby be and become a part of the Contract Documents the same as if originally bound thereto.

The following clarifications, amendments, additions, revisions, changes, and modifications change the original Contract Documents only in the amount and to the extent hereinafter specified in this Addendum.

Each bidder shall acknowledge receipt of this Addendum in his proposal or bid.

NOTE: Bidders are responsible for becoming familiar with every item of this Addendum. (This includes miscellaneous items at the very end of this Addendum.)

RE: ALL BIDDERS

ITEM NO. 1. PROJECT MANUAL, SECTION 09 21 16.00 – GYPSUM BOARD ASSEMBLIES

A. Delete 2.2, C., in its entirety.

ITEM NO. 2. PROJECT MANUAL, SECTION 11 40 00 – FOOD SERVICE EQUIPMENT

A. Kitchen Equipment Division, Item #24: Replace subparagraph c., as follows:

“c. Provide (1) single locking drawer with stainless steel pan with Component Hardware Group #P63-1012 drawer pulls as shown.”

B. Kitchen Equipment Division: Replace Item #43.1 as follows:

ITEM #43.1	DISH MACHINE VENT RISER
MFGR:	Allied Air, Master Air, or Pre-Approved Equal
MODEL:	Custom
QUANTITY:	Two (2)

Provide and set in place two (2) only vent risers per plan. Vent risers constructed per Fabrication Section 2.04. Refer to equipment plan, elevations and sections for size and configuration. To include:

- a. Provide 14-gauge stainless steel vent cowl risers from dish machine to 2” above finished ceiling. Provide vent cowl riser with #3 finish.
- b. Provide all necessary closure louvers and trim strips for complete installation.

ITEM NO. 3. ACCEPTABLE MANUFACTURERS

The following manufacturers are to be considered acceptable manufacturers (suppliers and fabricators) for the Sections of the Specifications listed. Listed manufacturers are required to bid on products equal in type and design, size, function, and quality to that originally specified. Final decision as to equality of products specified versus those proposed shall be made by the Architect.

Section 07 42 13.23 – Metal Composite Material Wall Panels
- TFC Canopy, Garrett, Indiana (Series 2000)

Section 07 95 13.13 – Interior Expansion Joint Cover Assemblies
- Erie Metal Specialties, Inc., Akron, New York

Section 09 84 33 – Sound-Absorbing Wall Units
- Specialty Products & Insulation, Lake Bluff, Illinois

Section 11 40 00 – Food Service Equipment
- Titan (Item #16, 24, 25, 37, 39, 40, 44, 47, and 48)

ITEM NO. 4. REVISED DRAWING SHEETS

- A. Drawing Sheets: A-201, A-202, and A-601 have been revised, dated 4/14/26, and are included with and hereby made a part of this Addendum. These Drawings supersede the original documents.

END OF ADDENDUM

NATHANIEL JONES EARLY LEARNING CENTER ADDITION & EXPANSION

7839 NEW AUGUSTA RD.
INDIANAPOLIS, IN 46268

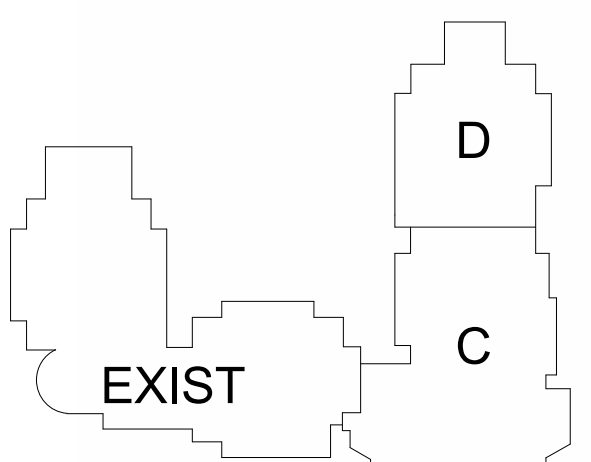
MSD OF PIKE TOWNSHIP



ARCHITECT

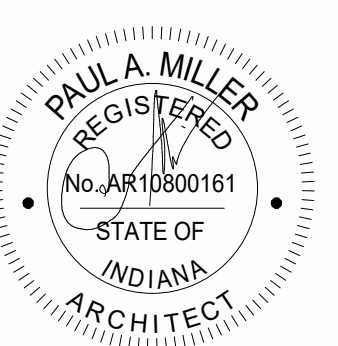


317-848-0966 WWW.FHAI.COM
390 E NEW YORK ST, SUITE 300, INDIANAPOLIS, IN 46204



KEY PLAN

BID DOCUMENTS

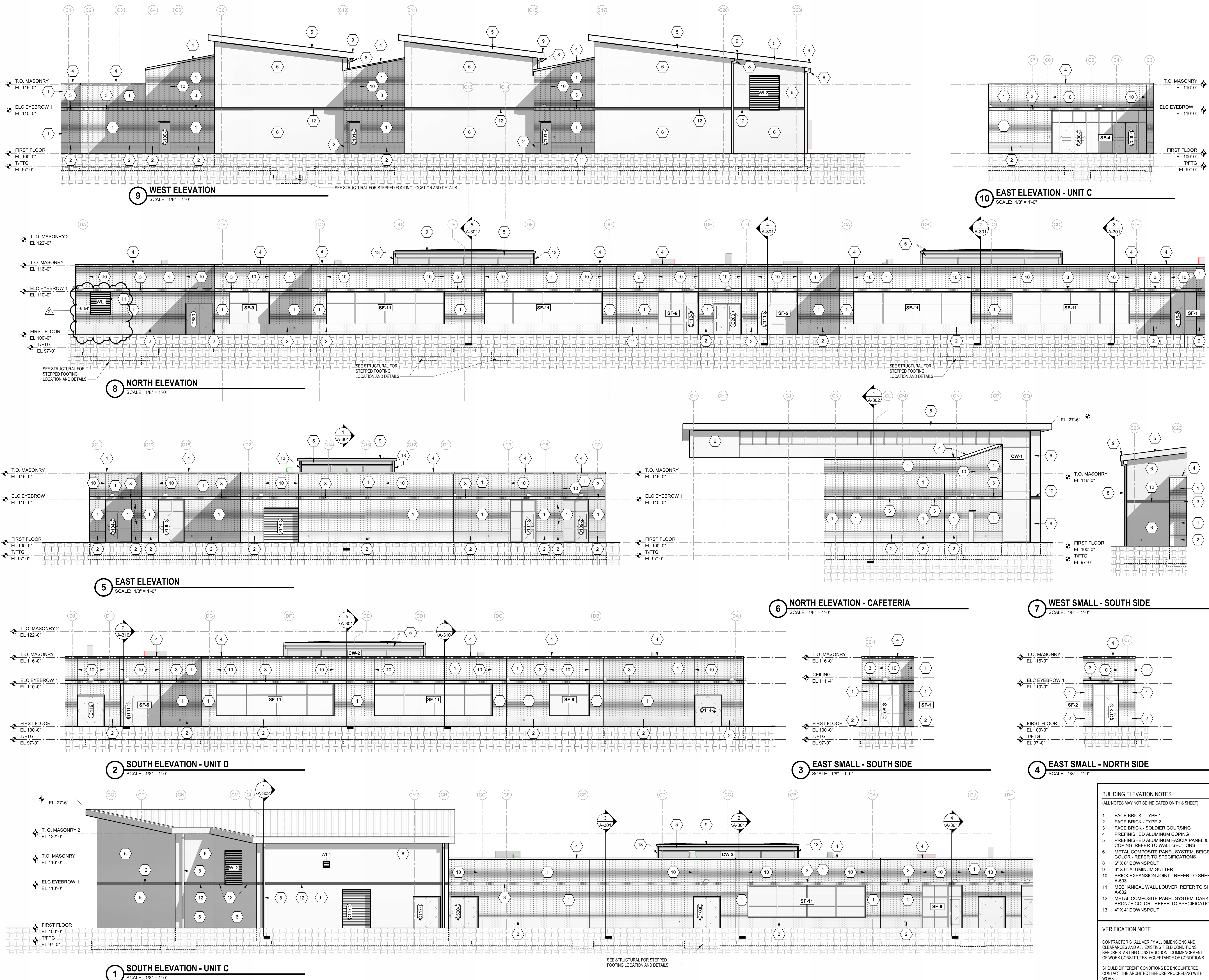


PROJECT MANAGER: PW
DRAWN BY: HA
PROJECT NUMBER: 223216.00
PROJECT ISSUE DATE: 03-13-2025

REV. NO.	DESCRIPTION	DATE
1	ADDENDUM 2	03/26/2025
2	ADDENDUM 5	04/14/2025

BUILDING ELEVATIONS

A-201



NATHANIEL JONES EARLY LEARNING CENTER ADDITION & EXPANSION

7839 NEW AUGUSTA RD.
INDIANAPOLIS, IN 46268

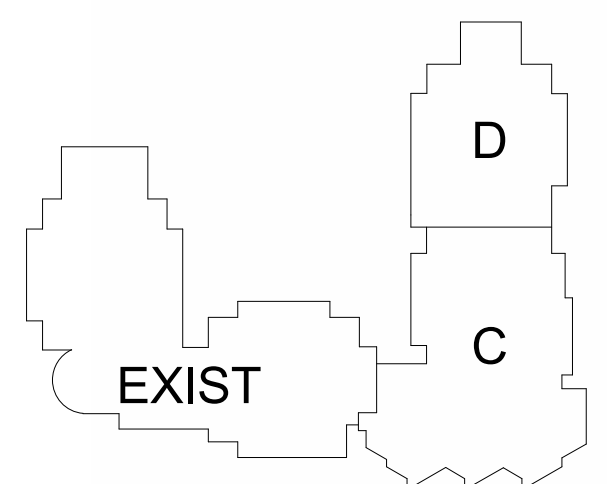
MSD OF PIKE TOWNSHIP



ARCHITECT

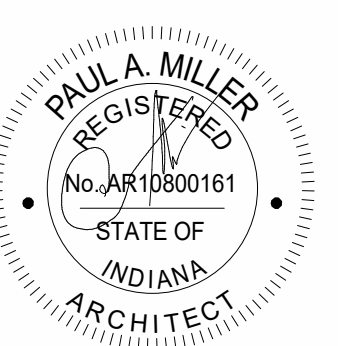


317-848-0966 WWW.FHAI.COM
350 E NEW YORK ST, SUITE 300, INDIANAPOLIS, IN 46204



KEY PLAN

BID DOCUMENTS

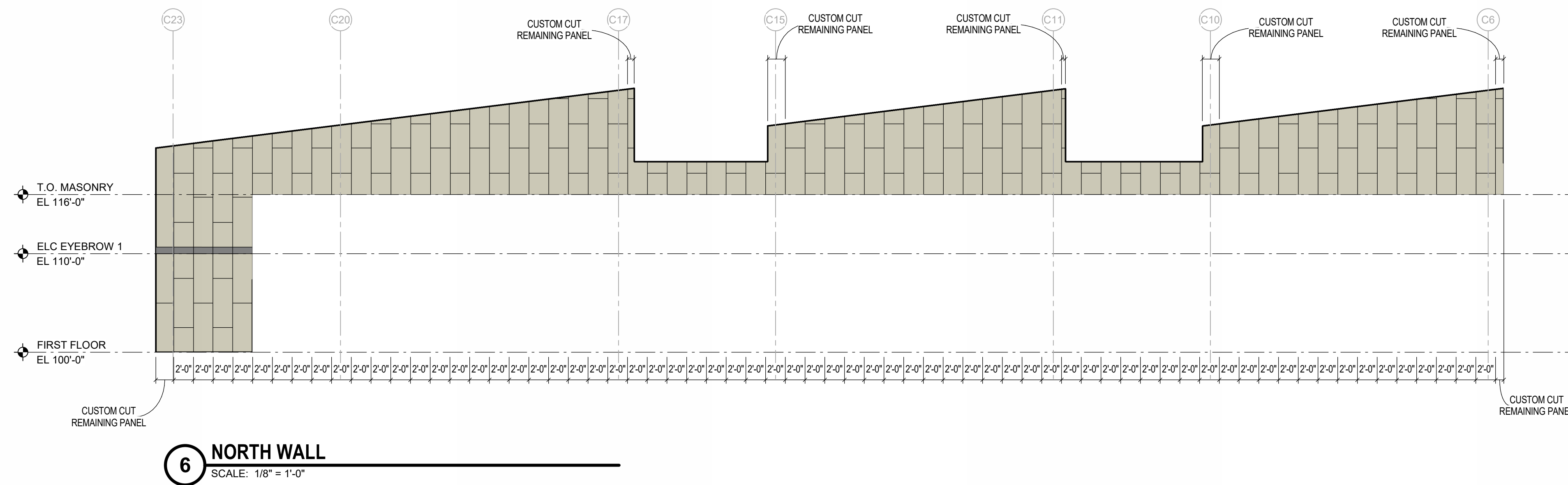


PROJECT MANAGER: PW
DRAWN BY: Author
PROJECT NUMBER: 223216.00
PROJECT ISSUE DATE: 03-13-2025

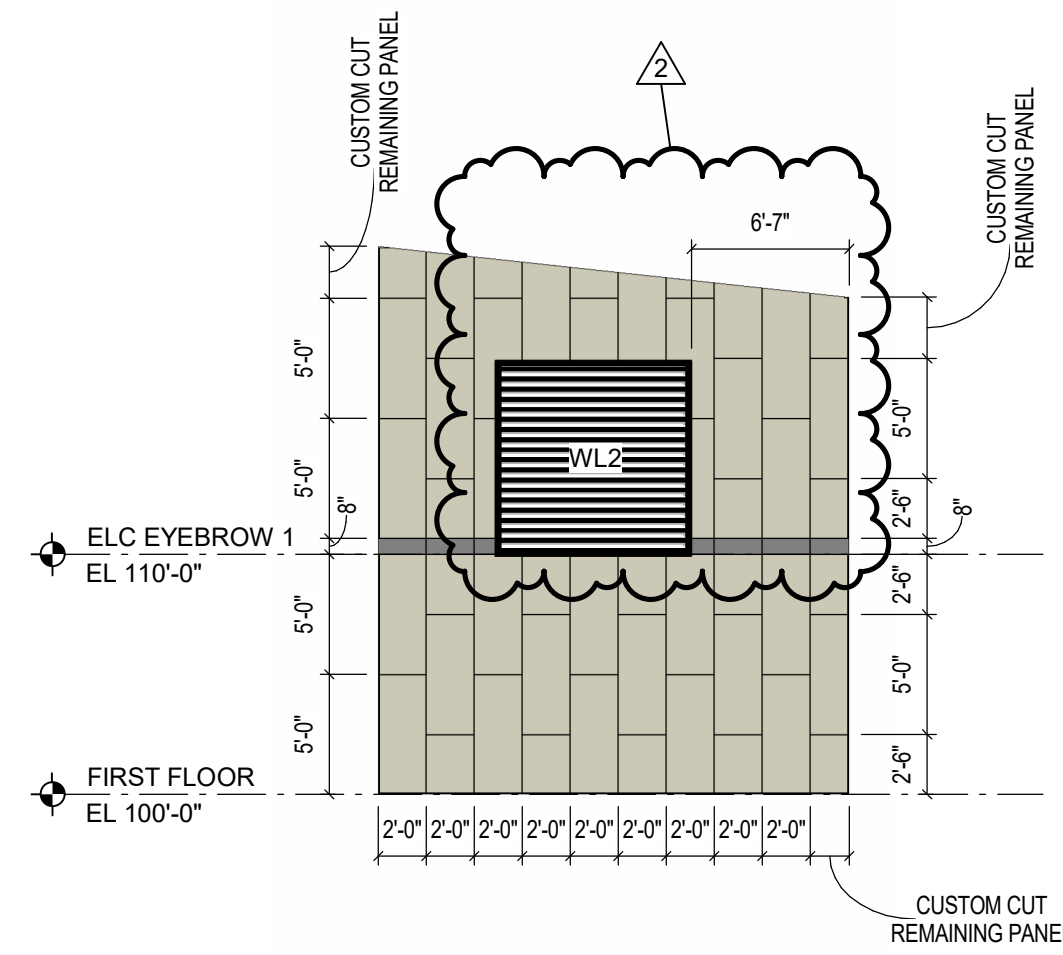
REV. NO.	DESCRIPTION	DATE
1	ADDENDUM 2	03/26/2025
2	ADDENDUM 5	04/14/2025

METAL PANEL WALL ELEVATIONS

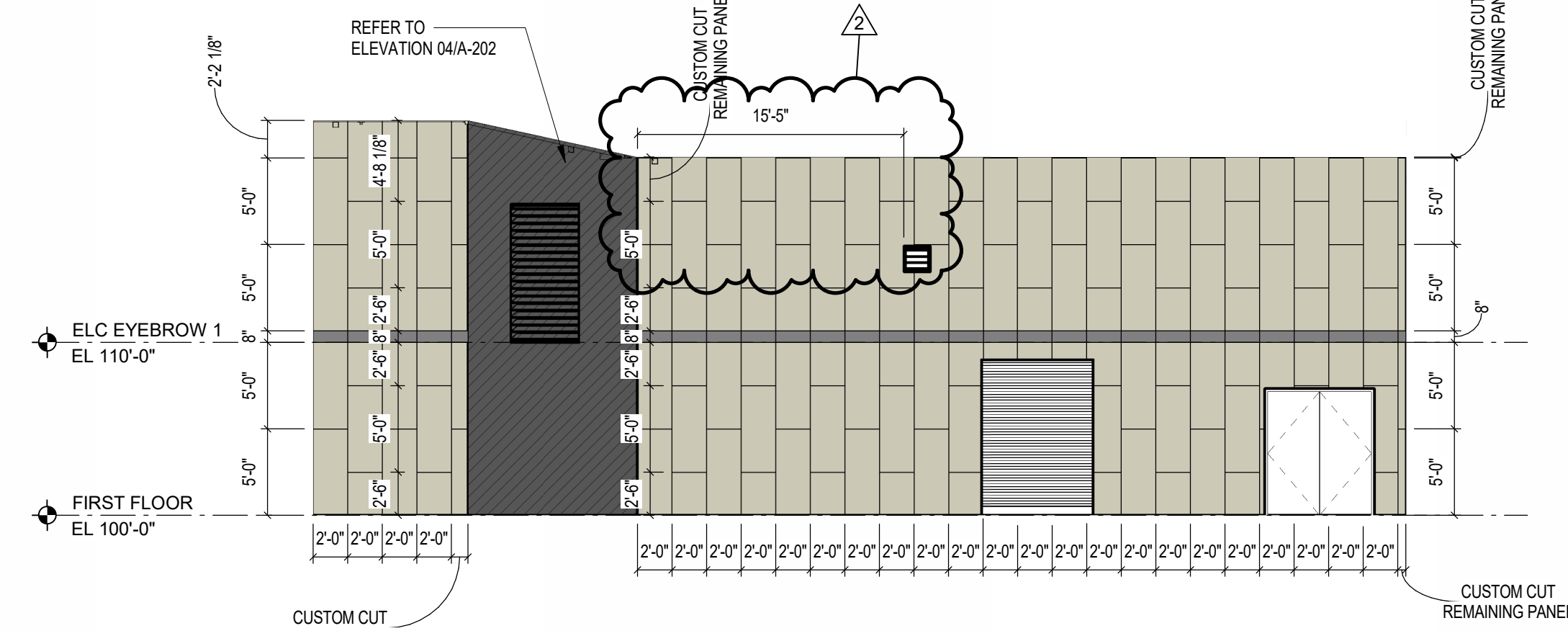
A-202



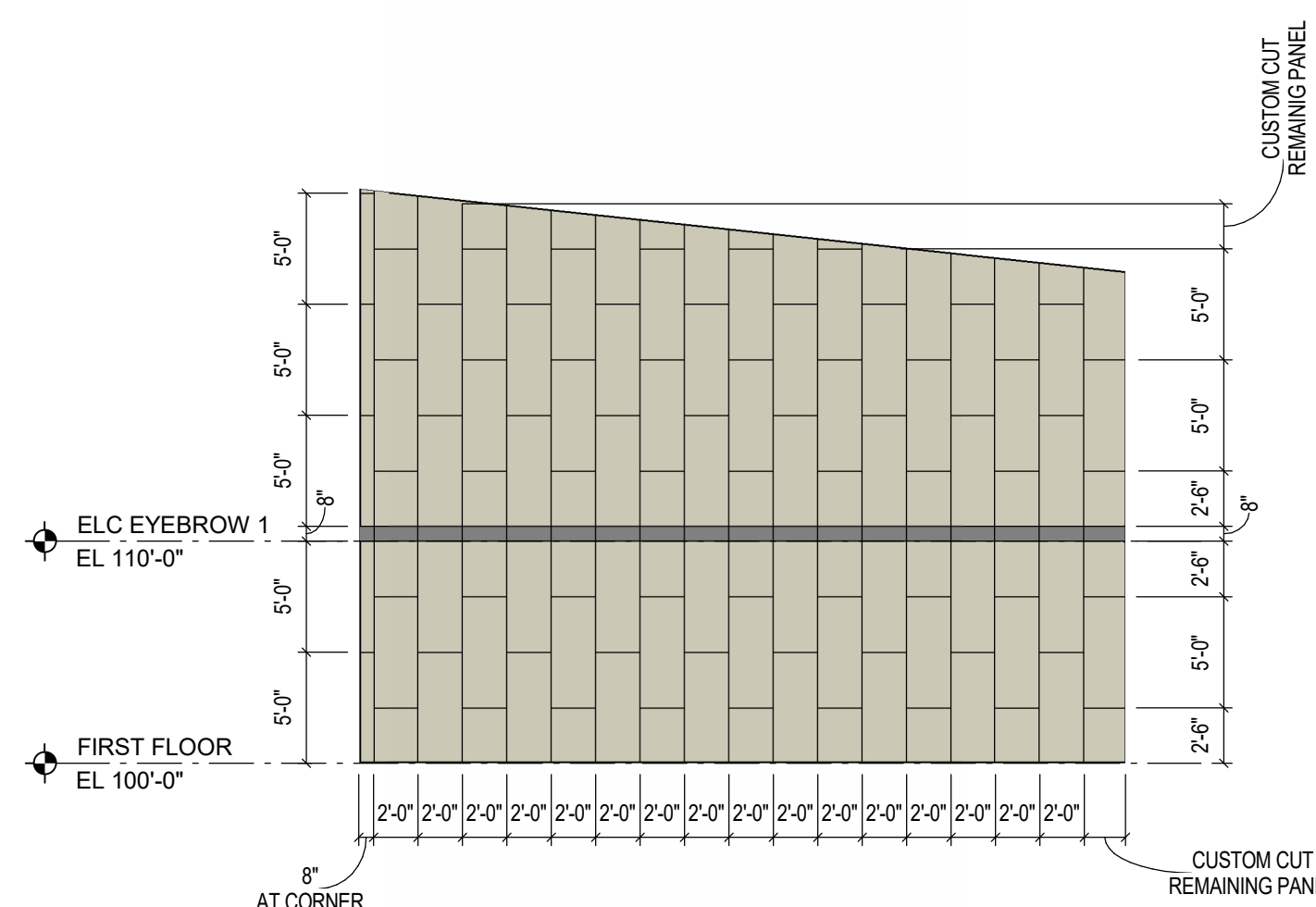
6 NORTH WALL
SCALE: 1/8" = 1'-0"



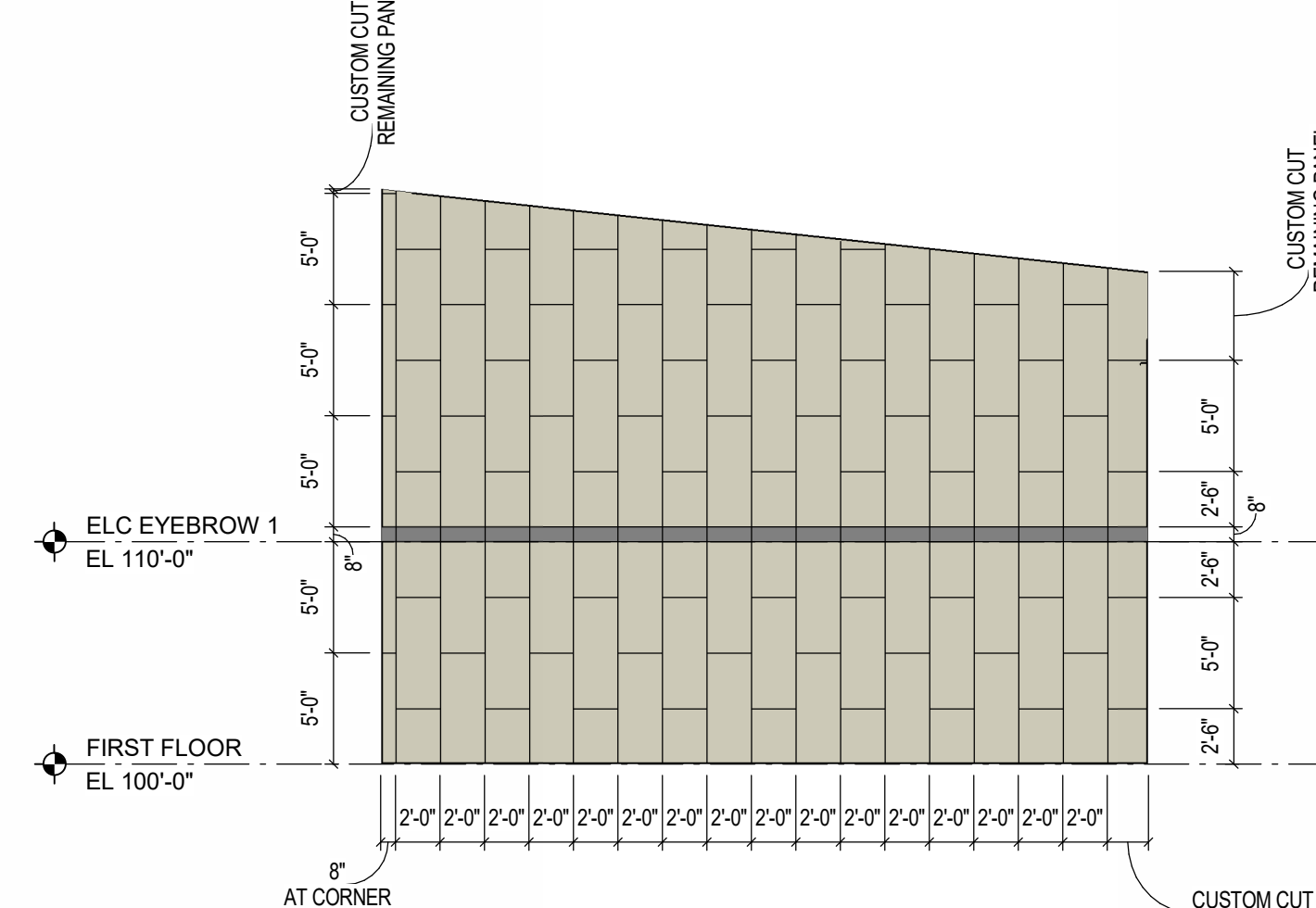
4 WEST WALL - FOUR
SCALE: 1/8" = 1'-0"



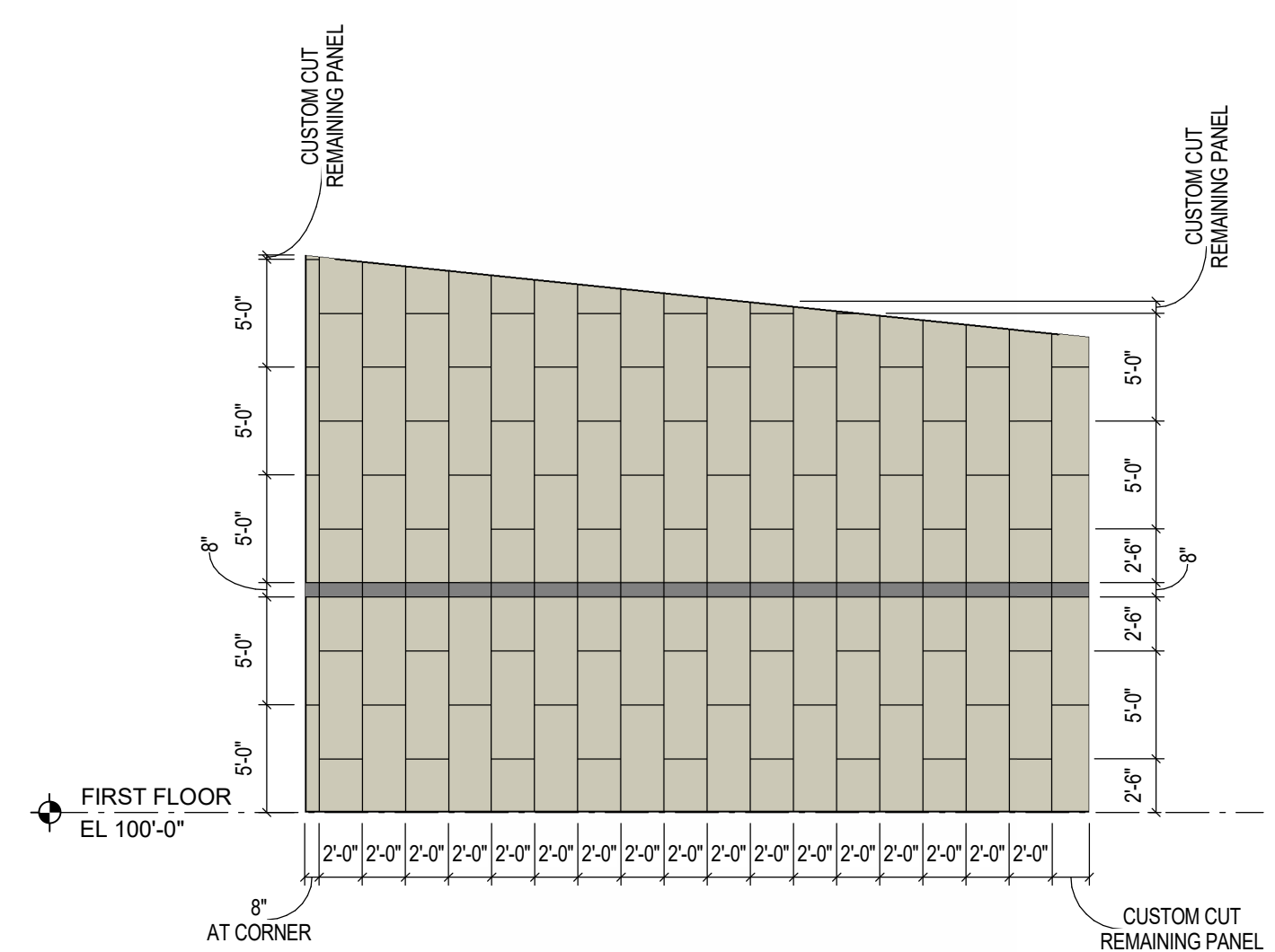
5 SOUTH WALL
SCALE: 1/8" = 1'-0"



1 WEST WALL - ONE
SCALE: 1/8" = 1'-0"



2 WEST WALL - TWO
SCALE: 1/8" = 1'-0"



3 WEST WALL - THREE
SCALE: 1/8" = 1'-0"

DOOR MARK	DOOR AND FRAME SCHEDULE - NEW										FIRE RATING	HARDWARE			STC RATING	REMARKS	DOOR MARK
	DOORS		FRAME					SET NO.	KEYSIDE ROOM	EXT							
	DOOR SIZE (WxH)	DOOR TYPE	FRAME MATERIAL	FRAME ELEVATION	JAMB DEPTH	HEAD	DETAILS					JAMB	SILL				
C100-1	3'-0" x 7'-2"	FQ2 WD	HM	F3	8 3/8"	H1	J1	11.0	EXT							C100-1	
C100-2	3'-0" x 7'-2"	F FAL	AL	A1	5 3/4"	4/A-604 SIM	2/A-604 SIM	4B/A-531								C100-2	
C100A	PR 3'-0" x 7'-0"	F WD	HM	F2	8 3/8"	H1	J1	12.0	EXT							C100A	
C100B	PR 3'-0" x 7'-0"	F WD	HM	F2	8 3/8"	H1	J1	12.0	EXT							C100B	
C100C	PR 3'-0" x 7'-0"	F WD	HM	F2	8 3/8"	H1	J1	12.0	EXT							C100C	
C100D	PR 3'-0" x 7'-0"	F WD	HM	F2	8 3/8"	H1	J1	12.0	EXT							C100D	
C101-1	3'-0" x 7'-2"	FQ2 WD	HM	F3	8 3/8"	H1	J1	11.0	EXT							C101-1	
C101-2	3'-0" x 7'-2"	FQ2 WD	HM	F3	8 3/8"	H1	J1	11.0	EXT							C101-2	
C101-3	3'-0" x 7'-2"	F FAL	AL	A1	5 3/4"	4/A-604 SIM	2/A-604 SIM	4B/A-531								C101-3	
C101-4	3'-0" x 7'-2"	F FAL	AL	A1	5 3/4"	4/A-604 SIM	2/A-604 SIM	4B/A-531								C101-4	
C102	3'-0" x 7'-0"	F WD	HM	F1	8 3/8"	H1	J1	22.0	C500							C102	
C103	3'-0" x 7'-0"	N WD	HM	F1	8 3/8"	H1	J1	20.0	C500							C103	
C103A	3'-0" x 7'-0"	F WD	HM	F1	8 3/8"	H1	J1	13.0	C103							C103A	
C103B	3'-0" x 7'-0"	F WD	HM	F1	8 3/8"	H1	J1	23.0	C103							C103B	
C103C	3'-0" x 7'-0"	F WD	HM	F1	8 3/8"	H1	J1	21.0	C103							C103C	
C103D	3'-0" x 7'-0"	FQ2 WD	HM	F1	8 3/8"	H1	J1	16.0	C103							C103D	
C103E	PR 3'-0" x 7'-2"	F FAL	AL	A2	5 3/4"	4/A-604 SIM	2/A-604 SIM	4B/A-531								C103E	
C104	3'-0" x 7'-0"	F WD	HM	F1	8 3/8"	H1	J1	15.0	C500							C104	
C105	3'-0" x 7'-0"	F WD	HM	F1	8 3/8"	H1	J1	25.0	C540							C105	
C106	3'-0" x 7'-0"	F WD	HM	F1	8 3/8"	H1	J1	25.0	C540							C106	
C107	PR 3'-0" x 7'-0"	F WD	HM	F2	8 3/8"	H1	J1	18.0	C550							C107	
C108-1	3'-0" x 7'-0"	FQ2 WD	HM	F3	8 3/8"	H1	J1	13.0	C550							C108-1	
C108-2	3'-0" x 7'-2"	FGAL2	AL	SEE PLAN	4 1/2"	4/A-604	2/A-604	4B/A-531								C108-2	
C108-3	2'-0" x 7'-0"	F WD	HM	F1	5 3/4"	H1	J1	13.0	C108							C108-3	
C108A	3'-0" x 7'-0"	F WD	HM	F1	5 3/4"	H1	J1	14.0	C108							C108A	
C108-1	3'-0" x 7'-0"	F WD	HM	F1	5 3/4"	H1	J1	24.0	C108							C108-1	
C108-2	3'-0" x 7'-0"	F WD	HM	F1	5 3/4"	H1	J1	24.0	C110							C108-2	
C108-1	3'-0" x 7'-0"	FQ3 WD	HM	F3	8 3/8"	H1	J1	13.0	C108							C108-1	
C110-2	3'-0" x 7'-2"	FGAL2	AL	SEE PLAN	4 1/2"	4/A-604	2/A-604	4B/A-531								C110-2	
C110A	3'-0" x 7'-0"	F WD	HM	F1	5 3/4"	H1	J1	14.0	C110							C110A	
C111-1	3'-0" x 7'-0"	FQ3 WD	HM	F3	8 3/8"	H1	J1	13.0	C550							C111-1	
C111-2	3'-0" x 7'-2"	FGAL2	AL	SEE PLAN	4 1/2"	4/A-604	2/A-604	4B/A-531								C111-2	
C111A	3'-0" x 7'-0"	F WD	HM	F1	5 3/4"	H1	J1	14.0	C111							C111A	
C112-1	3'-0" x 7'-0"	F WD	HM	F1	5 3/4"	H1	J1	24.0	C111							C112-1	
C112-2	3'-0" x 7'-0"	F WD	HM	F1	5 3/4"	H1	J1	24.0	C113							C112-2	
C113-1	3'-0" x 7'-0"	FQ3 WD	HM	F3	8 3/8"	H1	J1	11.1	C550							C113-1	
C113-2	3'-0" x 7'-2"	FGAL2	AL	SEE PLAN	4 1/2"	4/A-604	2/A-604	4B/A-531								C113-2	
C113-3	2'-0" x 7'-0"	F WD	HM	F1	5 3/4"	H1	J1	13.0	C113							C113-3	
C113A	3'-0" x 7'-0"	F WD	HM	F1	5 3/4"	H1	J1	14.0	C113							C113A	
C114-1	3'-0" x 7'-0"	FQ3 WD	HM	F3	8 3/8"	H1	J1	11.1	C550							C114-1	
C114-2	3'-0" x 7'-2"	FGAL2	AL	SEE PLAN	4 1/2"	4/A-604	2/A-604	4B/A-531								C114-2	
C114-3	2'-0" x 7'-0"	F WD	HM	F1	5 3/4"	H1	J1	13.0	C114							C114-3	
C114A	3'-0" x 7'-0"	F WD	HM	F1	5 3/4"	H1	J1	18.0	C114							C114A	
C115-1	3'-0" x 7'-0"	F WD	HM	F1	5 3/4"	H1	J1	24.0	C114							C115-1	
C115-2	3'-0" x 7'-0"	F WD	HM	F1	5 3/4"	H1	J1	24.0	C116							C115-2	
C116-1	3'-0" x 7'-0"	FQ3 WD	HM	F3	8 3/8"	H1	J1	13.0	C550							C116-1	
C116-2	3'-0" x 7'-2"	FGAL2	AL	SEE PLAN	4 1/2"	4/A-604	2/A-604	4B/A-531								C116-2	
C116A	3'-0" x 7'-0"	F WD	HM	F1	5 3/4"	H1	J1	14.0	C116							C116A	
C117-1	PR 3'-0" x 7'-2"	F FAL	AL	A2	5 3/4"	2/A-603	3/A-603	2E/A-531								C117-1	
C117-2	6'-6" x 9'-0"	OHCD	STL	-	2"	7/A-603	8/A-603	1/A-603								C117-2	
C117-3	3'-0" x 7'-0"	N WD	HM	F1	8 3/8"	H1	J1	26.0	C117							C117-3	
C118	3'-0" x 7'-0"	F WD	HM	F1	8 3/8"	H1	J1	14.2	C580							C118	
C119	PR 3'-0" x 7'-2"	F FAL	AL	A2	4 1/2"	4/A-604 SIM	2/A-604 SIM	4B/A-531								C119	
C200	PR 3'-0" x 7'-2"	FGAL2	AL	A2	5 3/4"	4/A-604 SIM	2/A-604 SIM	4B/A-531								C200	
C500-1	PR 3'-0" x 7'-2"	FGAL2	AL	A2	4 1/2"	3/A-604	2/A-604	2A 4B/A-531								C500-1	
C500-2	PR 3'-0" x 7'-2"	FGAL2	AL	A2	4 1/2"	3/A-604	2/A-604	2A 4B/A-531								C500-2	
C500-3	PR 3'-0" x 7'-2"	F FAL	AL	A2	5 3/4"	4/A-604 SIM	2/A-604 SIM	4B/A-531								C500-3	
C540	PR 3'-0" x 7'-0"	F WD	HM	F2	8 3/8"	H1	J1	8.0	C540							C540	
C580	PR 3'-0" x 7'-0"	FQ2 WD	HM	F2	8 3/8"	H1	J1	10.0	C200							C580	
D101-1	3'-0" x 7'-0"	FQ3 WD	HM	F3	8 3/8"	H1	J1	13.0	D550							D101-1	
D101-2	3'-0" x 7'-2"	FGAL2	AL	SEE PLAN	4 1/2"	4/A-604	2/A-604	4B/A-531								D101-2	
D101A	3'-0" x 7'-0"	F WD	HM	F1	5 3/4"	H1	J1	14.0	D101							D101A	
D102-1	3'-0" x 7'-0"	F WD	HM	F1	5 3/4"	H1	J1	24.0	D101							D102-1	
D102-2	3'-0" x 7'-0"	F WD	HM	F1	5 3/4"	H1	J1	24.0	D103							D102-2	
D103-1	3'-0" x 7'-0"	FQ2 WD	HM	F3	8 3/8"	H1	J1	11.1	D550							D103-1	
D103-2	3'-0" x 7'-2"	FGAL2	AL	SEE PLAN	4 1/2"	4/A-604	2/A-604	4B/A-531								D103-2	
D103-3	2'-0" x 7'-0"	F WD	HM	F1	5 3/4"	H1	J1	13.0	D103							D103-3	
D103A	3'-0" x 7'-0"	F WD	HM	F1	5 3/4"	H1	J1	14.0	D103							D103A	
D104-1	3'-0" x 7'-0"	FQ3 WD	HM	F3	8 3/8"	H1	J1	11.1	D550							D104-1	
D104-2	3'-0" x 7'-2"	FGAL2	AL	SEE PLAN	4 1/2"	4/A-604	2/A-604	4B/A-531								D104-2	
D104-3	2'-0" x 7'-0"	F WD	HM	F1	5 3/4"	H1	J1	13.0	D104							D104-3	
D104A	3'-0" x 7'-0"	F WD	HM	F1	5 3/4"	H1	J1	14.0	D104							D104A	
D105-1	3'-0" x 7'-0"	F WD	HM	F1	8 3/8"	H1	J1	24.0	D104							D105-1	
D105-2	3'-0" x 7'-0"	F WD	HM	F1	8 3/8"	H1	J1	24.0	D106							D105-2	
D106-1	3'-0" x 7'-0"	FQ3 WD	HM	F3	8 3/8"	H1	J1	13.0	D550							D106-1	
D106-2	3'-0" x 7'-2"	FGAL2	AL	SEE PLAN	4 1/2"	4/A-604	2/A-604	4B/A-531								D106-2	
D106A	3'-0" x 7'-0"	F WD	HM	F1	5 3/4"	H1	J1	14.0	D106							D106A	
D107-1	3'-0" x 7'-0"	FQ3 WD	HM	F3	8 3/8"	H1	J1	13.0	D550							D107-1	
D107-2	3'-0" x 7'-2"	FGAL2	AL	SEE PLAN	4 1/2"	4/A-604	2/A-604	4B/A-531								D107-2	
D107A	3'-0" x 7'-0"	F WD	HM	F1	5 3/4"	H1	J1	14.0	D107							D107A	
D108-1	3'-0" x 7'-0"	F WD	HM	F1	5 3/4"	H1	J1	24.0	D107							D108-1	
D108-2	3'-0" x 7'-0"	F WD	HM	F1	5 3/4"	H1	J1	24.0	D109							D108-2	
D109-1	3'-0" x 7'-0"	FQ3 WD	HM	F3	8 3/8"	H1	J1	11.1	D550							D109-1	
D109-2	3'-0" x 7'-2"	FGAL2	AL	SEE PLAN	4 1/2"	4/A-604	2/A-604	4B/A-531								D109-2	
D109-3	2'-0" x 7'-0"	F WD	HM	F1	5 3/4"	H1	J1	13.0	D109							D109-3	
D109A	3'-0" x 7'-0"	F WD	HM	F1	5 3/4"	H1	J1	14.0	D109							D109A	
D110-1	3'-0" x 7'-0"	FQ3 WD	HM	F3	8 3/8"	H1	J1	11.1	D550							D110-1	
D110-2	3'-0" x 7'-2"	FGAL2	AL	SEE PLAN	4 1/2"	4/A-604	2/A-604	4B/A-531								D110-2	
D110-3	2'-0" x 7'-0"	F WD	HM	F1	5 3/4"	H1	J1	13.0	D110							D110-3	
D110A	3'-0" x 7'-0"	F WD	HM	F1	5 3/4"	H1	J1	14.0	D110							D110A	
D111-1	3'-0" x 7'-0"	F WD	HM	F1	8 3/8"	H1	J1	24.0	D110							D111-1	
D111-2	3'-0" x 7'-0"	F WD	HM	F1	8 3/8"	H1	J1	24.0	D112							D111-2	
D112-1	3'-0" x 7'-0"	FQ3 WD	HM	F3	8 3/8"	H1	J1	13.0	D550							D112-1	
D112-2	3'-0" x 7'-2"	FGAL2	AL	SEE PLAN	4 1/2"	4/A-604	2/A-604	4B/A-531								D112-2	
D112A	3'-0" x 7'-0"	F WD	HM	F1	5 3/4"	H1	J1	14.0	D112							D112A	
D113	3'-0" x 7'-0"	F WD	HM	F1	8 3/8"	H1	J1	9.0	D113							D113	
D113A	3'-0" x 7'-0"	F WD	HM	F1	8 3/8"	H1	J1	10.1	D113							D113A	
D114-1	3'-0" x 7'-0"	F WD	HM	F1	8 3/8"	H1	J1	14.1	D580							D114-1	
D114-2	PR 3'-0" x 7'-2"	F FAL	AL	A2	4 1/2"	4/A-604 SIM	2/A-604 SIM	4									