



ADDENDUM NO. 4
August 12, 2022

PROJECT: LTCP Projects 7 & 8: Northside Interceptor Sewer
OWNER: City of Huntington
ENGINEER: Lochmueller Group
Project No. 120-3003-02W

Acknowledgement of Receipt of Addendum No. 4

Send this page immediately to:
(No Cover Sheet Required)

Anthony Goodnight
Lochmueller Group

Email (Preferred):

agoodnight@lochgroup.com

Phone No.:

260-519-2823

From:

(Insert Company Name)

Signature

Date

Note:

**You must also acknowledge receipt of all addenda on the
Bid Proposal Form**



ADDENDUM NO. 4
August 12, 2022

PROJECT: LTCP Projects 7 & 8: Northside Interceptor Sewer

OWNER: City of Huntington

ENGINEER: Lochmueller Group
Project No. 120-3003-02W

THE FOLLOWING CHANGES, ADDITIONS AND CLARIFICATIONS ARE HEREBY MADE PART OF THE CONTRACT DOCUMENTS FOR THE ABOVE REFERENCED PROJECT AND SHALL BE TAKEN INTO ACCOUNT IN THE PREPARATION OF ALL PROPOSALS AND THE EXECUTION OF ALL WORK. WORK SHALL CONFORM TO THE REQUIREMENTS OF THE ORIGINAL CONTRACT DOCUMENTS AND ADDENDA WHEREVER THEY APPLY.

RECEIPT OF THIS ADDENDUM MUST BE ACKNOWLEDGED ON THE BID FORM

CLARIFICATIONS/RESPONSES TO CONTRACTOR QUESTIONS

CONTRACT INFORMATION AND PLANS

This addendum is being e-mailed to you, no hard copy will be mailed. It is imperative that you email the acknowledgement to Lochmueller Group, Inc. upon receipt of this document to acknowledge that it has been received. It is also important to acknowledge receipt of this Addendum on the bid form.



DATE: August 12, 2022

FROM: Lochmueller Group
7223 Engle Road, Suite 105
Fort Wayne, IN 46804

TO: Prospective Bidders

RE: **ADDENDUM No. 4** to the Bidding Documents for
Huntington, Indiana
LTCP Projects 7 & 8: Northside Interceptor Sewer
Lochmueller Group Project No. 120-3003-02W



This Addendum forms a part of the Contract Documents and modifies the original Bidding Documents as noted below. Please acknowledge receipt of the Addendum in the space provided in the Bid Form. Failure to do so may subject the Bidder to disqualification.

This **Addendum No. 4** consists of seventy-five (75) pages, including attachments.

PROJECT MANUAL:

1. Section 00 31 14 (BID FORM)
REPLACE with Section 00 31 14, Rev. 4 (**Attachment A**). Note that select quantities have been updated, one item name has been revised, and one new pay item has been added.
2. Davis Bacon Wage Determination
REPLACE the placeholder sheet in the project manual with the current wage determination (**Attachment A**).

PLAN SHEETS:

1. Sheets SP5, SP6, U12, U13, and T9 – T11
REPLACE with revised plan sheets dated 8/11/2022 (**Attachment B**).

ATTACHMENTS:

1. Attachment A: Revised Project Manual Documents
2. Attachment B: Revised Plan Sheets

END OF ADDENDUM NO. 4

ATTACHMENT A: REVISED PROJECT MANUAL DOCUMENTS

SECTION 00 31 14

BID FORM FOR CONSTRUCTION CONTRACT

The terms used in this Bid with initial capital letters have the meanings stated in the Instructions to Bidders, the General Conditions, and the Supplementary Conditions.

ARTICLE 1—OWNER AND BIDDER

- 1.01 This Bid is submitted to: **CITY OF HUNTINGTON, 300 Cherry Street, Huntington, IN 46750**
- 1.02 The undersigned Bidder proposes and agrees, if this Bid is accepted, to enter into an Agreement with Owner in the form included in the Bidding Documents to perform all Work as specified or indicated in the Bidding Documents for the prices and within the times indicated in this Bid and in accordance with the other terms and conditions of the Bidding Documents.

ARTICLE 2—ATTACHMENTS TO THIS BID

- 2.01 The following documents are submitted with and made a condition of this Bid:
- A. Required Bid security;
 - B. List of Proposed Subcontractors;
 - C. List of Proposed Suppliers;
 - D. Evidence of authority to do business in the state of the Project; or a written covenant to obtain such authority within the time for acceptance of Bids;
 - E. Contractor's license number as evidence of Bidder's State Contractor's License or a covenant by Bidder to obtain said license within the time for acceptance of Bids;
 - F. Required Bidder Qualification Statement with supporting data; and
 - G. Indiana Iran Investment Certification
 - H. E-Verify Certification
 - I. Form OEE-1 Certification of Non-segregated Facilities
 - J. Form OEE-2 Notice to Labor Unions or Other Organizations of Workers Nondiscrimination in Employment
 - K. Bidders List/Good Faith Effort Worksheet
 - L. Indiana State Form No. 96
 - M. Non-Collusion Affidavit
 - N. Financial Statement for Bidders
 - O. Attachment J – Certification from Contractor Related to American Iron and Steel Clause
 - P. Indiana Department of Administration Contractor Pre-Qualification Certification

ARTICLE 3—BASIS OF BID—LUMP SUM BID AND UNIT PRICES**3.01 Unit Price Bids**

A. The Base Bid shall be based on providing Large Diameter Pipe as Centrifugally Cast Fiberglass-Reinforced Polymer Mortar Pipe (CCFRPM).

B. Bidder will perform the following Work at the indicated unit prices:

Item No.	Specification	Description	Unit	Estimated Quantity	Bid Unit Price	Bid Amount
1	105	CONSTRUCTION ENGINEERING	LS	1		
2	110	MOBILIZATION AND DEMOBILIZATION	LS	1		
3	201	CLEARING RIGHT OF WAY	LS	1		
4	202	CURB, CONCRETE, REMOVE	LFT	11,053		
5	202	SIDEWALK CONCRETE, REMOVE	SYD	6,914		
6	202	SIGN, REMOVE	EACH	139		
7	202	MANHOLE OR INLET, REMOVE	EACH	84		
8	202	PIPE, REMOVE, WATER	LFT	3,625		
9	202	PIPE, REMOVE, SANITARY	LFT	7,734		
10	202	FIRE HYDRANT ASSEMBLY, REMOVE	EACH	5		
11	203	EXCAVATION, COMMON	CYD	18,010		
12	205	NO. 2 STONE	TON	2,270		
13	207	SUBGRADE TREATMENT, TYPE II	SYS	6,320		
14	301	COMPACTED AGGREGATE NO. 53	CYD	7,864		
15	302	SUBBASE FOR PCCP	CYD	1,057		
16	303	COMPACTED AGGREGATE NO. 53	TON	2,750		
17	304	HMA PATCHING, TYPE B	TON	15		
18	306	MILLING, ASPHALT, 1 1/2 IN.	SYD	2,006		
19	402	HMA SURFACE, TYPE B	TON	1,730		
20	402	HMA INTERMEDIATE, TYPE B	TON	2,142		
21	402	HMA BASE, TYPE B	TON	3,245		
22	401	JOINT ADHESIVE, SURFACE	LFT	20,011		
23	401	JOINT ADHESIVE, INTERMEDIATE	LFT	20,011		
24	401	LIQUID ASPHALT SEALANT	LFT	20,011		
25	406	ASPHALT FOR TACK COAT	TON	15		
26	502	PCCP, 10 IN.	SYD	4,227		
27	502	PCCP, 4 IN.	SYD	3,075		
28	503	D-1 CONTRACTION JOINT	LFT	2,552		
29	603	FENCE, GATE, CHAIN LINK, RESET	LFT	5		
30	603	FENCE, CHAIN LINK, RESET	LFT	110		
31	604	SIDEWALK, CONCRETE	SYD	2,748		
32	604	CURB RAMP, CONCRETE	SYD	970		
33	604	DETECTABLE WARNING SURFACES	SYD	142		
34	605	CURB, CONCRETE	LFT	837		
35	605	CURB, CONCRETE, MODIFIED	LFT	84		

36	605	CURB AND GUTTER, CONCRETE	LFT	8,282		
37	605	CURB AND GUTTER, CONCRETE, MODIFIED	LFT	1,451		
38	610	HMA FOR APPROACHES, TYPE B	TON	1,645		
39	610	PCCP FOR APPROACHES, 6 IN.	SYD	601		
40	610	PCCP FOR APPROACHES, 9 IN.	SYD	694		
41	621	MULCHED SEEDING R	SYD	16,310		
42	621	SODDING, NURSERY	SYD	7,210		
43	621	ARTICULATED CONCRETE BLOCK ON GEOTEXTILE FABRIC	SYD	54		
44	622	PLANT, DECIDUOUS TREE, SINGLE STEM, 1.25 TO 2 IN.	EACH	46		
45	622	PLANT, DECIDUOUS TREE, SINGLE STEM, OVER 2 IN. TO 2.5 IN.	EACH	41		
46	720	CASTING, ADJUST TO GRADE (MANHOLES AND INLETS)	EACH	27		
47	720	CASTING, WATER VALVE, ADJUST TO GRADE	EACH	11		
48	720	CATCH BASIN, MODIFIED	EACH	28		
49	716	PIPE INSTALLATION, TRENCHLESS, 60 IN.	LFT	166		
50	716	PIPE INSTALLATION, TRENCHLESS, 6 IN.	LFT	166		
51	801	MAINTAINING TRAFFIC	LS	1		
52	802	SIGN POST, SQUARE TYPE 1 REINFORCED ANCHOR BASE	LFT	755		
53	802	SIGN, SHEET, WITH LEGEND, 0.080 IN.	SFT	410		
54	802	SIGN, SHEET, WITH LEGEND, 0.100 IN.	SFT	235		
55	802	SIGN, SHEET, WITH LEGEND, 0.125 IN.	SFT	92		
56	808	TRANSVERSE MARKING, THERMOPLASTIC, CROSSWALK LINE, WHITE, 8 IN.	LFT	2,132		
57	808	LINE, THERMOPLASTIC, SOLID, WHITE, 4 IN.	LFT	4,331		
58	808	LINE, THERMOPLASTIC, SOLID, YELLOW, 4 IN.	LFT	1,398		
59	808	TRANSVERSE MARKING, THERMOPLASTIC, STOP LINE, WHITE, 24 IN.	LFT	393		
60	808	PAVEMENT MESSAGE MARKING, THERMOPLASTIC LANE INDICATION ARROW	EACH	5		

61	808	PAVEMENT MESSAGE MARKING, THERMOPLASTIC ONLY	EACH	3		
62	808	PAVEMENT MESSAGE MARKING, THERMOPLASTIC R X R	EACH	1		
63	01 02 50	CSO 003 REHABILITATION	LS	1		
64	01 02 50	CSO 009 REHABILITATION	LS	1		
65	01 02 50	CSO 010 REHABILITATION	LS	1		
66	01 02 50	CSO 011 REHABILITATION	LS	1		
67	01 02 50	CSO 014 REHABILITATION	LS	1		
68	01 02 50	CSO 015 REHABILITATION	LS	1		
69	01 02 50	CSO 016 REHABILITATION	LS	1		
70	01 02 50	BRICK PAVERS (REMOVE, PROTECT, RESET)	SYD	3,207		
71	01 02 50	LIMESTONE CURB (REMOVE, PROTECT, RESET)	LFT	520		
72	01 02 50	RAILROAD – TRACK MONITORING PLAN PREPARATION	LS	1		
73	01 02 50	RAILROAD – TRACK MONITORING	LS	1		
74	01 02 50	RAILROAD – FRAC PLAN	LS	1		
75	01 02 50	RAILROAD – SHORING PLAN PREPARATION	LS	1		
76	01 02 50	RAILROAD – MONITOR AND OBSERVER	ALLOWANCE	1	\$275,000	
77	01 02 50	DEWATERING FOR CONTAMINATED GROUNDWATER	LS	1		
78	01 02 50	6" METER PIT	EACH	1		
79	01 02 50	BRICKS IN PIPE AT WWTP, REMOVE	LS	1		
80	01 20 00	SCADA	ALLOWANCE	1	\$46,450	
81	01 50 00	TEMPORARY FACILITIES AND CONTROLS	MONTHS	24		
82	26 04 00	FIBER OPTIC TERMINATION AT THE WWTP ADMIN BUILDING	LS	1		
83	26 04 00	FIBER OPTIC TERMINATION FROM WWTP TO THE CABLE VAULT, "CV-9"	LS	1		
84	26 04 00	CSO 003 ELECTRICAL AND FIBER OPTIC	LS	1		
85	26 04 00	CSO 009 ELECTRICAL AND FIBER OPTIC	LS	1		
86	26 04 00	CSO 010 ELECTRICAL AND FIBER OPTIC	LS	1		
87	26 04 00	CSO 011 ELECTRICAL AND FIBER OPTIC	LS	1		
88	26 04 00	CSO 013 ELECTRICAL AND FIBER OPTIC	LS	1		

89	26 04 00	CSO 014 ELECTRICAL AND FIBER OPTIC	LS	1		
90	26 04 00	CSO 015 ELECTRICAL AND FIBER OPTIC	LS	1		
91	26 04 00	CSO 016 ELECTRICAL	LS	1		
92	31 23 18	ROCK REMOVAL	CYS	17,500		
93	31 25 00	EROSION CONTROL	LS	1		
94	33 01 20	TELEVISION INSPECTION OF PROPOSED PIPE	LFT	11,961		
95	33 01 30	CURED-IN-PLACE PIPE LINING, 12"	LFT	74		
96	33 01 30	CURED-IN-PLACE PIPE LINING, 36"	LFT	22		
97	33 01 30	CURED-IN-PLACE PIPE LINING, 42"	LFT	2,028		
98	33 01 30	CURED-IN-PLACE PIPE LINING, 32"x 48" BRICK SEWER	LFT	620		
99	33 01 31	MANHOLE REHABILITATION	VLF	230		
100	33 05 61	MANHOLE, C4	EACH	16		
101	33 05 61	MANHOLE, J10	EACH	3		
102	33 05 61	MANHOLE, J4	EACH	13		
103	33 05 61	MANHOLE, K4	EACH	14		
104	33 05 61	MANHOLE, L4	EACH	15		
105	33 05 61	MANHOLE, N4	EACH	12		
106	33 05 61	CUSTOM STRUCTURE (STR. 114)	EACH	1		
107	33 05 61	INLET, J10	EACH	23		
108	33 05 61	CONFLICT STRUCTURE (STR No. 138)	EACH	1		
109	33 14 13	12" LINE STOP (UNDISTRIBUTED)	EACH	2		
110	33 14 13	6" LINE STOP (UNDISTRIBUTED)	EACH	6		
111	33 14 13	4" LINE STOP (UNDISTRIBUTED)	EACH	2		
112	33 14 13	WATER MAIN, EXISTING, 4 IN. PIPE CUT & CAP	EACH	3		
113	33 14 13	WATER MAIN, EXISTING, 6 IN. PIPE CUT & CAP	EACH	15		
114	33 14 13	WATER MAIN, EXISTING, 12 IN. PIPE CUT & CAP	EACH	2		
115	33 14 13	3/4" WATER SERVICE CONNECTIONS - LONG (WITH METER)	EACH	29		
116	33 14 13	3/4" WATER SERVICE CONNECTIONS - SHORT (WITH METER)	EACH	31		
117	33 14 13	WATER SERVICE REPAIR (UNDISTRIBUTED)	EACH	10		
118	33 14 13	WATER MAIN, CONNECTION TO EXISTING	EACH	11		
119	33 14 13	WATER MAIN, DUCTILE IRON, 4 IN.	LFT	13		

120	33 14 13	WATER MAIN, DUCTILE IRON, 4 IN. 90° BEND	EACH	1		
121	33 14 13	WATER MAIN, DUCTILE IRON, 6 IN.	LFT	2,346		
122	33 14 13	WATER MAIN, PVC, C900, 6 IN.	LFT	1,335		
123	33 14 13	TRACER WIRE, #10 GAUGE	LFT	1,500		
124	33 14 13	WATER MAIN, DUCTILE IRON, 6 IN. X 4 IN. REDUCER	EACH	3		
125	33 14 13	WATER MAIN, DUCTILE IRON, 6 IN. 11.25° BEND	EACH	3		
126	33 14 13	WATER MAIN, DUCTILE IRON, 6 IN. 22.5° BEND	EACH	3		
127	33 14 13	WATER MAIN, DUCTILE IRON, 6 IN. 45° BEND	EACH	40		
128	33 14 13	WATER MAIN, DUCTILE IRON, 6 IN. 90° BEND	EACH	8		
129	33 14 13	WATER MAIN, DUCTILE IRON, 6 IN. X 6 IN. TEE	EACH	6		
130	33 14 13	WATER MAIN, DUCTILE IRON, 12 IN.	LFT	607		
131	33 14 13	WATER MAIN, DUCTILE IRON, 12 IN. X 6 IN. REDUCER	EACH	2		
132	33 14 13	WATER MAIN, DUCTILE IRON, 12 IN, 22.5° BEND	EACH	1		
133	33 14 13	WATER MAIN, DUCTILE IRON, 12 IN, 45° BEND	EACH	5		
134	33 14 13	WATER MAIN, DUCTILE IRON, 12 IN, 90° BEND	EACH	2		
135	33 14 13	WATER MAIN, DUCTILE IRON, 12 IN. X 6 IN. TEE	EACH	1		
136	33 14 13	WATER MAIN, DUCTILE IRON, 12 IN. X 12 IN. TEE	EACH	2		
137	33 14 19	WATER MAIN, DUCTILE IRON, GATE VALVE 6 IN.	EACH	11		
138	33 14 19	WATER MAIN, DUCTILE IRON, GATE VALVE 12 IN.	EACH	1		
139	33 14 19	WATER MAIN, TAPPING SLEEVE WITH VALVE, 4. IN	EACH	1		
140	33 14 19	WATER MAIN, TAPPING SLEEVE WITH VALVE, 8. IN	EACH	2		
141	33 14 19	WATER MAIN, TAPPING SLEEVE WITH VALVE, 12. IN	EACH	4		
142	33 14 19	WATER MAIN, TAPPING SLEEVE WITH VALVE, 6. IN	EACH	12		
143	33 14 19	HYDRANT ASSEMBLY WITH VALVE	EACH	9		
144	33 42 00	PIPE, TYPE 2, CIRCULAR, 12 IN.	LFT	1,322		

145	33 42 00	PIPE, TYPE 2, CIRCULAR, 18 IN.	LFT	200		
146	33 42 00	PIPE, TYPE 2, CIRCULAR, 24 IN.	LFT	403		
147	33 42 00	PIPE, TYPE 2, CIRCULAR, 12 IN. (C900)	LFT	336		
148	33 42 00	PIPE, TYPE 2, CIRCULAR, 18 IN. (C905)	LFT	157		
149	33 42 00	PIPE, TYPE 2, CIRCULAR, 24 IN. (C905)	LFT	357		
150	33 31 11	OUTSIDE DROP PIPE	EACH	21		
151	33 31 11	SEWER SERVICE LATERAL ADJUSTMENT (UNDISTRIBUTED)	EACH	10		
152	33 31 11	SANITARY SERVICE LATERAL CONNECTION	EACH	85		
153	33 31 11	PIPE, SANITARY SEWER, 8 IN.	LFT	1,621		
154	33 31 11	PIPE, SANITARY SEWER, 18 IN.	LFT	9		
155	33 31 11	PIPE, SANITARY SEWER, 21 IN.	LFT	9		
156	33 31 11	PIPE, SANITARY SEWER, 24 IN.	LFT	22		
157	33 31 11	PIPE, SANITARY SEWER, 30 IN.	LFT	255		
158	33 31 11	PIPE, SANITARY SEWER, 48 IN.	LFT	83		
159	33 31 11	PIPE, SANITARY SEWER, 16 IN. (C905)	LFT	15		
160	33 31 11	PIPE, SANITARY SEWER, 18 IN. (C905)	LFT	21		
161	33 31 11	PIPE, SANITARY SEWER, 30 IN. (C905)	LFT	37		
162	33 31 11	PIPE, SANITARY SEWER, CCFRPM, 60 IN.	LFT	166		
163	33 31 11	ANTI-FLOTATION GEO-GRID	LFT	1,550		
164	33 31 11	PIPE, SANITARY SEWER, 36 IN.	LFT	1,993		
165	33 31 11	PIPE, SANITARY SEWER, 42 IN.	LFT	52		
166	33 31 11	PIPE, SANITARY SEWER, 48 IN.	LFT	3,452		
167	33 31 11	PIPE, SANITARY SEWER, 66 IN.	LFT	2,119		
168	33 31 11	PIPE, SANITARY SEWER, 72 IN.	LFT	2,543		
169	33 05 61	9' x 9' MANHOLE, TYPE 4 CASTING	EA	4		
Total of All Unit Price Bid Items for the Base Bid				\$		
And in words:						

C. Bidder acknowledges that:

- Each Bid Unit Price includes an amount considered by Bidder to be adequate to cover Contractor's overhead and profit for each separately identified item, and

2. Estimated quantities are not guaranteed and are solely for the purpose of comparison of Bids, and final payment for all Unit Price Work will be based on actual quantities, determined as provided in the Contract Documents.

ARTICLE 4—MANDATORY ALTERNATE #1

- 4.01 **Mandatory Alternate #1:** This alternate includes the replacement of 36”-72” CCFRPM Pipe with 36”-72” High Density Profile Wall Polyethylene Pipe (HDPE)

Mandatory Alternate #1: 36”-72” High Density Profile Wall Polyethylene Pipe (HDPE)					Bid Amount
Total of All Unit Price Bid Items for the Base Bid (CCFRPM)					\$
Deduct for Base Bid Line Items 164-168					\$
Item No.	Description	Unit	Estimated Quantity	Bid Unit Price	
164	PIPE, SAN.SEWER, 36 IN.	LFT	1,993		\$
165	PIPE, SAN.SEWER, HDPE, 42 IN.	LFT	52		\$
166	PIPE, SAN.SEWER, HDPE, 48 IN.	LFT	3,452		\$
167	PIPE, SAN.SEWER, HDPE, 66 IN.	LFT	2,119		\$
168	PIPE, SAN.SEWER, HDPE, 72 IN.	LFT	2,543		\$
Total of All Unit Price Bid Items for Alternate #1 (HDPE)					\$
And in words:					

ARTICLE 5—MANDATORY ALTERNATE #2

- 5.01 **Mandatory Alternate #2:** This alternate includes the replacement of 36”-72” CCFRPM Pipe with 36”-72” Steel Reinforced Polyethylene Pipe (SRPE)

Mandatory Alternate #2: Steel Reinforced Polyethylene Pipe (SRPE)					Bid Amount
Total of All Unit Price Bid Items for the Base Bid (CCFRPM)					\$
Deduct for Base Bid Line Items 164-168					\$
Item No.	Description	Unit	Estimated Quantity	Bid Unit Price	
164	PIPE, SAN.SEWER, 36 IN.	LFT	1,993		
165	PIPE, SAN.SEWER, SRPE, 42 IN.	LFT	52		
166	PIPE, SAN.SEWER, SRPE, 48 IN.	LFT	3,452		
167	PIPE, SAN.SEWER, SRPE, 66 IN.	LFT	2,119		
168	PIPE, SAN.SEWER, SRPE, 72 IN.	LFT	2,543		
Total of All Unit Price Bid Items for Alternate #2 (SRPE)					\$
And in words:					

ARTICLE 6—TIME OF COMPLETION

- 6.01 Bidder agrees that the Work will be substantially complete and will be completed and ready for final payment in accordance with Paragraph 15.06 of the General Conditions on or before the dates or within the number of calendar days indicated in the Agreement.
- 6.02 Bidder accepts the provisions of the Agreement as to liquidated damages.

ARTICLE 7—BIDDER’S ACKNOWLEDGEMENTS: ACCEPTANCE PERIOD, INSTRUCTIONS, AND RECEIPT OF ADDENDA7.01 *Bid Acceptance Period*

- A. This Bid will remain subject to acceptance for 90 days after the Bid opening, or for such longer period of time that Bidder may agree to in writing upon request of Owner.

7.02 *Instructions to Bidders*

- A. Bidder accepts all of the terms and conditions of the Instructions to Bidders, including without limitation those dealing with the disposition of Bid security.

7.03 *Receipt of Addenda*

- A. Bidder hereby acknowledges receipt of the following Addenda: **[Add rows as needed. Bidder is to complete table.]**

Addendum Number	Addendum Date

ARTICLE 8—BIDDER’S REPRESENTATIONS AND CERTIFICATIONS8.01 *Bidder’s Representations*

- A. In submitting this Bid, Bidder represents the following:
1. Bidder has examined and carefully studied the Bidding Documents, including Addenda.
 2. Bidder has visited the Site, conducted a thorough visual examination of the Site and adjacent areas, and become familiar with the general, local, and Site conditions that may affect cost, progress, and performance of the Work.
 3. Bidder is familiar with all Laws and Regulations that may affect cost, progress, and performance of the Work.
 4. Bidder has carefully studied the reports of explorations and tests of subsurface conditions at or adjacent to the Site and the drawings of physical conditions relating to existing surface or subsurface structures at the Site that have been identified in the Supplementary Conditions, with respect to the Technical Data in such reports and drawings.
 5. Bidder has carefully studied the reports and drawings relating to Hazardous Environmental Conditions, if any, at or adjacent to the Site that have been identified in the Supplementary Conditions, with respect to Technical Data in such reports and drawings.

6. Bidder has considered the information known to Bidder itself; information commonly known to contractors doing business in the locality of the Site; information and observations obtained from visits to the Site; the Bidding Documents; and the Technical Data identified in the Supplementary Conditions or by definition, with respect to the effect of such information, observations, and Technical Data on (a) the cost, progress, and performance of the Work; (b) the means, methods, techniques, sequences, and procedures of construction to be employed by Bidder, if selected as Contractor; and (c) Bidder's (Contractor's) safety precautions and programs.
7. Based on the information and observations referred to in the preceding paragraph, Bidder agrees that no further examinations, investigations, explorations, tests, studies, or data are necessary for the performance of the Work at the Contract Price, within the Contract Times, and in accordance with the other terms and conditions of the Contract.
8. Bidder is aware of the general nature of work to be performed by Owner and others at the Site that relates to the Work as indicated in the Bidding Documents.
9. Bidder has given Engineer written notice of all conflicts, errors, ambiguities, or discrepancies that Bidder has discovered in the Bidding Documents, and of discrepancies between Site conditions and the Contract Documents, and the written resolution thereof by Engineer is acceptable to Contractor.
10. The Bidding Documents are generally sufficient to indicate and convey understanding of all terms and conditions for performance and furnishing of the Work.
11. The submission of this Bid constitutes an incontrovertible representation by Bidder that without exception the Bid and all prices in the Bid are premised upon performing and furnishing the Work required by the Bidding Documents.

8.02 *Bidder's Certifications*

A. The Bidder certifies the following:

1. This Bid is genuine and not made in the interest of or on behalf of any undisclosed individual or entity and is not submitted in conformity with any collusive agreement or rules of any group, association, organization, or corporation.
2. Bidder has not directly or indirectly induced or solicited any other Bidder to submit a false or sham Bid.
3. Bidder has not solicited or induced any individual or entity to refrain from bidding.
4. Bidder has not engaged in corrupt, fraudulent, collusive, or coercive practices in competing for the Contract. For the purposes of this Paragraph 8.02.A:
 - a. Corrupt practice means the offering, giving, receiving, or soliciting of anything of value likely to influence the action of a public official in the bidding process.
 - b. Fraudulent practice means an intentional misrepresentation of facts made (a) to influence the bidding process to the detriment of Owner, (b) to establish bid prices at artificial non-competitive levels, or (c) to deprive Owner of the benefits of free and open competition.
 - c. Collusive practice means a scheme or arrangement between two or more Bidders, with or without the knowledge of Owner, a purpose of which is to establish bid prices at artificial, non-competitive levels.
 - d. Coercive practice means harming or threatening to harm, directly or indirectly, persons or their property to influence their participation in the bidding process or affect the execution of the Contract.

BIDDER hereby submits this Bid as set forth above:

Bidder:

(typed or printed name of organization)

By:

(individual's signature)

Name:

(typed or printed)

Title:

(typed or printed)

Date:

(typed or printed)

If Bidder is a corporation, a partnership, or a joint venture, attach evidence of authority to sign.

Attest:

(individual's signature)

Name:

(typed or printed)

Title:

(typed or printed)

Date:

(typed or printed)

Address for giving notices:

Bidder's Contact:

Name:

(typed or printed)

Title:

(typed or printed)

Phone:

Email:

Address:

Bidder's Contractor License No.: (if applicable)

DAVIS BACON WAGE DETERMINATION

"General Decision Number: IN20220006 08/12/2022

Superseded General Decision Number: IN20210006

State: Indiana

Construction Types: Heavy and Highway

Counties: Adams, Allen, Bartholomew, Benton, Blackford, Boone, Brown, Carroll, Cass, Clark, Clay, Clinton, Crawford, Daviess, Dearborn, Decatur, DeKalb, Delaware, Dubois, Elkhart, Fayette, Floyd, Fountain, Franklin, Fulton, Gibson, Grant, Greene, Hamilton, Hancock, Harrison, Hendricks, Henry, Howard, Huntington, Jackson, Jasper, Jay, Jefferson, Jennings, Johnson, Knox, Kosciusko, Lagrange, Lawrence, Madison, Marion, Marshall, Martin, Miami, Monroe, Montgomery, Morgan, Newton, Noble, Ohio, Orange, Owen, Parke, Perry, Pike, Posey, Pulaski, Putnam, Randolph, Ripley, Rush, Scott, Shelby, Spencer, Starke, Steuben, Sullivan, Switzerland, Tippecanoe, Tipton, Union, Vanderburgh, Vermillion, Vigo, Wabash, Warren, Warrick, Washington, Wayne, Wells, White and Whitley Counties in Indiana.

* EXCEPT LAKE, LAPORTE, PORTER AND ST. JOSEPH COUNTIES HEAVY AND HIGHWAY CONSTRUCTION PROJECTS

Note: Contracts subject to the Davis-Bacon Act are generally required to pay at least the applicable minimum wage rate required under Executive Order 14026 or Executive Order 13658. Please note that these Executive Orders apply to covered contracts entered into by the federal government that are subject to the Davis-Bacon Act itself, but do not apply to contracts subject only to the Davis-Bacon Related Acts, including those set forth at 29 CFR 5.1(a)(2)-(60).

If the contract is entered into on or after January 30, 2022, or the contract is renewed or extended (e.g., an option is exercised) on or after January 30, 2022:	<ul style="list-style-type: none"> . Executive Order 14026 generally applies to the contract. . The contractor must pay all covered workers at least \$15.00 per hour (or the applicable wage rate listed on this wage determination, if it is higher) for all hours spent performing on the contract in 2022.
If the contract was awarded on or between January 1, 2015 and January 29, 2022, and the contract is not renewed or extended on or after January 30, 2022:	<ul style="list-style-type: none"> . Executive Order 13658 generally applies to the contract. . The contractor must pay all covered workers at least \$11.25 per hour (or the applicable wage rate listed on this wage determination, if it is higher) for all hours spent performing on that contract in 2022.

The applicable Executive Order minimum wage rate will be adjusted annually. If this contract is covered by one of the

Executive Orders and a classification considered necessary for performance of work on the contract does not appear on this wage determination, the contractor must still submit a conformance request.

Additional information on contractor requirements and worker protections under the Executive Orders is available at <https://www.dol.gov/agencies/whd/government-contracts>.

Modification Number	Publication Date
0	01/07/2022
1	02/04/2022
2	02/18/2022
3	02/25/2022
4	03/04/2022
5	04/01/2022
6	04/15/2022
7	04/22/2022
8	04/29/2022
9	05/06/2022
10	05/13/2022
11	05/27/2022
12	06/03/2022
13	06/10/2022
14	06/17/2022
15	07/01/2022
16	07/08/2022
17	07/15/2022
18	07/29/2022
19	08/05/2022
20	08/12/2022

ASBE0008-004 03/01/2022

DEARBORN, FAYETTE, FRANKLIN, OHIO, RIPLEY SWITZERLAND AND UNION COUNTIES

	Rates	Fringes
Asbestos Workers/Insulator (Includes application of all insulating materials, protective coverings, coatings & finishings to all types of mechanical systems).....	\$ 32.33	20.19
HAZARDOUS MATERIAL HANDLER (Includes preparation, wettings, stripping, removal, scrapping, vacuuming, bagging & disposing of all insulation materials, whether they contain asbestos or not, from mechanical systems).....	\$ 25.00	13.70

ASBE0017-008 06/01/2022

NEWTON COUNTY:

	Rates	Fringes
ASBESTOS WORKER/HEAT & FROST INSULATOR.....	\$ 52.80	32.30
HAZARDOUS MATERIAL HANDLER		

(INCLUDES PREPARATION,
WETTING, STRIPPING REMOVAL
SCRAPPING, VACUUMING, BAGGING
AND DISPOSAL OF ALL
INSULATION MATERIALS, WHETHER
THEY CONTAIN ASBESTOS OR NOT,
FROM MECHAINCAL SYSTEMS).....\$ 38.85 24.60

ASBE0018-005 06/01/2021

BROWN, BARTHOLOMEW, BENTON, BOONE, CARROLL, CASS, CLAY,
CLINTON, DECATUR, DELAWARE, ELKHART. FOUNTAIN, FULTON, GREENE,
HAMILTON, HANCOCK, HENDRICKS, HENRY, HOWARD, JASPER, JOHNSON,
KOSCIUSKO, LAGRANGE, MARSHALL, MADISON, MARION, MONROE,
MONTGOMERY, MORGAN, OWEN, PARKE, PULASKI, PUTNAM, RUSH, SHELBY,
STARKE, TIPPECANOE, TIPTON, VERMILLION, VIGO, WARREN and WHITE
Counties

Rates Fringes

ASBESTOS WORKER/HEAT & FROST
INSULATOR (includes
application of all insulating
materials, protective
coverings, coatings and
finishings to all types of
mechanical systems).....\$ 33.90 21.38

HAZARDOUS MATERIAL HANDLER
(includes preparation,
wettings, stripping, removal,
scrapping, vacuuming, bagging
& disposing of all
insulation materials, whether
they contain asbestos or not,
from mechanical systems).....\$ 23.00 14.40

ASBE0037-004 04/02/2021

DAVIESS, DUBOIS, GIBSON, KNOX, MARTIN, PIKE, POSEY, SPENCER,
SULLIVAN, VANDERBURGH AND WARRICK COUNTIES

Rates Fringes

ASBESTOS WORKER/HEAT & FROST
INSULATOR (includes
application of all insulating
materials protective
coverings, coatings an
finishes to all types of
mechanical systems. Also the
application of firestopping,
material openings and
penetrations in walls,
floors, ceilings, curtain
walls and all lead abatement.)...\$ 32.00 21.89

HAZARDOUS MATERIAL HANDLER
(Includes preparation,
wetting, stripping, removal,
scrapping, vacuuming, bagging
and disposing of all
insulation materials, whether
they contain asbestos or not,
from mechanical systems).....\$ 23.00 14.40

ASBE0041-002 07/01/2021

ADAMS, ALLEN, BLACKFORD, DE KALB, GRANT, HUNTINGTON, JAY,
MIAMI, NOBLE, STEUBEN, WABASH, WELLS AND WHITLEY COUNTIES:

	Rates	Fringes
ASBESTOS WORKER/HEAT & FROST INSULATOR (includes application of all insulating materials, protective coverings, coatings and finishings to all types of mechanical systems).....	\$ 30.05	21.49
HAZARDOUS MATERIAL HANDLER (includes preparation, wetings, stripping, removal, scrapping, vaccuming, bagging & disposing of all insulation materials, whether they contain asbestos or not, from mechanical systems).....	\$ 23.00	14.40

ASBE0051-003 03/01/2022

CLARK, CRAWFORD. FLOYD, HARRISON, JACKSON, JEFFERSON, JENNINGS,
LAWRENCE, ORANGE, PERRY, SCOTT, and WASHINGTON Counties

	Rates	Fringes
ASBESTOS WORKER/HEAT & FROST INSULATOR (Includes application of all insulating materials, protective coverings, coatings and finishings to all types of mechanical systems).....	\$ 27.10	18.38
HAZARDOUS MATERIAL HANDLER (includes preparation, wetings, stripping, removal, scrapping, vaccuming, bagging & disposing of all insulation materials, whether they contain asbestos or not, from mechanical systems).....	\$ 19.80	13.30

ASBE0079-002 07/01/2017

RANDOLPH AND WAYNE COUNTIES

	Rates	Fringes
ASBESTOS WORKER/HEAT & FROST INSULATOR (Includes application of all insulating materials, protective coverings, coatings & finishings to all types of mechanical systems).....	\$ 22.25	8.89
HAZARDOUS MATERIAL HANDLER (Includes preparation, wetting, stripping, removal,		

scrapping, vacuuming, bagging
& disposing of all insulation
materials, whether they
contain asbestos or not, from
mechanical systems)).....\$ 25.00 13.70

BRIN0003-001 06/01/2021

INDIANAPOLIS

BOONE, HANCOCK, HENDRICKS, JOHNSON, MARION, MONTGOMERY, MORGAN
and SHELBY COUNTIES

	Rates	Fringes
--	-------	---------

Bricklayer, Stone Mason, Pointer, Caulking.....	\$ 33.59	15.89
TERRAZZO FINISHER.....	\$ 20.74	11.98
TERRAZZO WORKER/SETTER.....	\$ 33.36	15.74
Tile & Marble Finisher.....	\$ 21.69	11.99
Tile, Marble Setter.....	\$ 32.61	15.73

BRIN0004-004 06/01/2021

FORT WAYNE

ADAMS, ALLEN, DEKALB, HUNTINGTON, NOBLE, STEUBEN, WELLS AND
WHITLEY COUNTIES:

	Rates	Fringes
--	-------	---------

BRICKLAYER (STONE MASON, MARBLE MASONS, POINTER, CLEANER, AND CAULKER).....	\$ 31.50	18.96
Terrazzo Grinder Finisher.....	\$ 28.00	14.84
Terrazzo Worker Mechanic.....	\$ 32.37	18.76
Tile Setter & Marble Mason Mechanic.....	\$ 28.00	16.36
Tile, Marble & Terrazzo Finisher.....	\$ 25.00	13.78

BRIN0004-005 06/01/2020

CRAWFORD, DUBOIS, PERRY, POSEY, SPENCER, VANDERBURGH, and
WARRICK Counties

	Rates	Fringes
--	-------	---------

BRICKLAYER.....	\$ 30.00	14.71
TILE FINISHER.....	\$ 20.31	12.00
TILE SETTER.....	\$ 27.19	13.85

BRIN0004-009 06/01/2021

BARTHOLOMEW, BROWN, DEARBORN, DECATUR, JENNINGS, MONROE, OHIO,
OWENS, RIPLEY and SWITZERLAND COUNTIES

	Rates	Fringes
--	-------	---------

Bricklayer, Stonemason.....	\$ 30.53	15.95
TERRAZZO FINISHER.....	\$ 21.69	11.99
TERRAZZO WORKER/SETTER.....	\$ 33.36	15.74
Tile & Marble Finisher.....	\$ 21.69	11.99

Tile, Marble Setter.....	\$ 32.61	15.73
--------------------------	----------	-------

BRIN0004-010 06/01/2021

CLARK, FLOYD, and HARRISON Counties

Rates	Fringes
-------	---------

BRICKLAYER

BRICKLAYERS, STONEMASONS

AND CEMENT MASONS.....	\$ 29.57	15.10
------------------------	----------	-------

BRIN0004-015 06/01/2021

TERRE HAUTE

CLAY, DAVIESS, GIBSON, GREENE, KNOX, MARTIN, PARKE, PIKE,
PUTNAM, SULLIVAN, VERMILLION and VIGO COUNTIES

Rates	Fringes
-------	---------

BRICKLAYER

BRICKLAYERS, STONE MASONS
and POINTER/
CLEANER/CAULKER.....

	\$ 33.59	15.97
--	----------	-------

CEMENT MASON (Greene and Sullivan Counties).....	\$ 27.78	11.02
---	----------	-------

CEMENT MASON (REMAINING COUNTIES).....	\$ 33.59	15.97
---	----------	-------

TERRAZO FINISHER.....	\$ 20.74	11.98
-----------------------	----------	-------

TERRAZO WORKER.....	\$ 33.36	15.74
---------------------	----------	-------

TILE LAYER, MARBLE MASON, MOSAIC WORKER.....	\$ 32.61	15.73
---	----------	-------

BRIN0004-016 06/01/2021

MUNCIE

BLACKFORD, DELAWARE, FAYETTE, FRANKLIN, HAMILTON, HENRY, JAY,
MADISON, RANDOLPH, RUSH, TIPTON, UNION and WAYNE COUNTIES

Rates	Fringes
-------	---------

Bricklayer, Stonemason,

Pointer, Caulker & Cleaner.....	\$ 31.75	18.07
---------------------------------	----------	-------

TERRAZO FINISHER.....	\$ 20.74	11.98
-----------------------	----------	-------

TERRAZO WORKER/SETTER.....	\$ 33.36	15.74
----------------------------	----------	-------

Tile & Marble Finisher.....	\$ 20.74	11.98
-----------------------------	----------	-------

Tile & Marble Setter; Mosaic Worker.....	\$ 32.61	15.73
---	----------	-------

BRIN0006-001 06/01/2021

JASPER, NEWTON & STARKE COUNTIES

Rates	Fringes
-------	---------

BRICKLAYER (Including

Stonemason, and Pointer,

Caulker & Cleaner).....	\$ 38.85	27.17
-------------------------	----------	-------

Tile, Marble & Terrazzo Worker...	\$ 37.05	21.64
-----------------------------------	----------	-------

BRIN0011-001 06/01/2021

LAFAYETTE

BENTON, CARROLL, CLINTON, FOUNTAIN, TIPPECANOE, WARREN and
WHITE COUNTIES

	Rates	Fringes
Bricklayer, Stonemason, Pointer, Caulker & Cleaner.....	\$ 30.75	18.97
TERRAZZO FINISHER.....	\$ 21.69	11.99
TERRAZZO WORKER/SETTER.....	\$ 33.36	15.74
Tile & Marble Finisher.....	\$ 21.69	11.99
Tile & Marble Setter; Mosaic Worker.....	\$ 32.61	15.73

BRIN0018-002 06/01/2021

CASS, ELKHART, FULTON, GRANT, HOWARD, KOSCUISKO, LAGRANGE,
MARSHALL, MIAMI, PULASKI, WABASH

	Rates	Fringes
Bricklayer, Caulker, Cleaner, Pointer.....	\$ 31.11	18.40

CARP0002-023 04/01/2022

DEARBORN, JACKSON, JENNINGS, OHIO, RIPLEY AND SWITZERLAND
COUNTIES

	Rates	Fringes
CARPENTER.....	\$ 26.95	26.11

CARP0133-001 04/01/2021

BOONE, CLAY, FOUNTAIN, MONROE, MONTGOMERY, MORGAN, OWEN,
PARKE, PUTNAM, VERMILLION AND VIGO COUNTIES

	Rates	Fringes
CARPENTER.....	\$ 28.71	23.36

CARP0133-003 04/01/2021

HAMILTON, HANCOCK, HENDRICKS, JOHNSON (Townships of Clark, Camp
Atterbury north of Hospital Road, Pleasant, White River), and
MARION Counties

	Rates	Fringes
CARPENTER.....	\$ 29.82	23.36

CARP0175-004 04/01/2021

CLARK, FLOYD, HARRISON, JEFFERSON, SCOTT AND WASHINGTON COUNTIES

	Rates	Fringes
CARPENTER.....	\$ 25.82	25.59

CARP0215-002 04/01/2022

BENTON, CARROLL, CLINTON, PULASKI, TIPPECANOE, WARREN AND WHITE COUNTIES

	Rates	Fringes
CARPENTER.....	\$ 30.53	23.04

CARP0224-011 04/01/2021

CRAWFORD, DUBOIS, PERRY, PIKE, POSEY, SPENCER, VANDERBURGH AND WARRICK COUNTIES:

	Rates	Fringes
CARPENTER.....	\$ 25.89	25.52

CARP0224-012 04/01/2021

DAVIESS, GIBSON, GREENE, KNOX, LAWRENCE, MARTIN, ORANGE AND SULLIVAN COUNTIES:

	Rates	Fringes
CARPENTER.....	\$ 26.24	25.57

CARP0232-003 04/01/2022

ALLEN, DEKALB, LAGRANGE, NOBLE, STEUBEN and WHITLEY COUNTIES

	Rates	Fringes
CARPENTER.....	\$ 29.14	23.87

CARP0301-001 04/01/2022

BARTHOLOMEW, BROWN, (Camp Atterbury south of Hospital Road), DECATUR, FRANKLIN, JOHNSON (Townships of Blue River, Franklin, Hensley, Needham, Nineveh, Union) , RUSH AND SHELBY COUNTIES

	Rates	Fringes
CARPENTER.....	\$ 29.26	23.87

CARP0413-003 04/01/2022

ADAMS, CASS, ELKHART, FULTON, GRANT, HOWARD, HUNTINGTON, KOSCIUSKO, MARSHALL, MIAMI, TIPTON, WABASH AND WELLS COUNTIES:

	Rates	Fringes
CARPENTER.....	\$ 29.46	23.70

CARP0999-001 06/01/2017

JASPER, NEWTON, AND STARKE COUNTIES

	Rates	Fringes
CARPENTER.....	\$ 37.56	26.42

CARP1016-001 04/01/2022BLACKFORD, DELAWARE, FAYETTE, HENRY, JAY, MADISON, RANDOLPH,
UNION AND WAYNE COUNTIES

	Rates	Fringes
CARPENTER.....	\$ 29.56	24.01

CARP1076-004 04/01/2016HAMILTON and MARION Counties, and the following Townships in
JOHNSON County: Camp Atterbury (North of Hospital Rd.), Clark,
Pleasant, and White River

	Rates	Fringes
MILLWRIGHT.....	\$ 26.81	19.28

CARP1076-005 06/01/2017

JASPER, NEWTON, PULASKI, and STARKE Counties

	Rates	Fringes
MILLWRIGHT.....	\$ 37.66	26.42

CARP1076-006 06/01/2018BARTHOLOMEW, BLACKFORD, BOONE, BROWN, CLAY, DECATUR, DELAWARE,
FAYETTE, FOUNTAIN, FRANKLIN, HAMILTON, HANCOCK, HENDRICKS,
HENRY, JAY, JOHNSON, MADISON, MARION, MONROE, MONTGOMERY,
MORGAN, OWEN, PARKE, PUTNAM, RANDOLPH, RUSH, SHELBY, UNION,
VERMILLION, VIGO, AND WAYNE COUNTIES

	Rates	Fringes
MILLWRIGHT.....	\$ 28.18	22.39

CARP1080-001 04/01/2021GIBSON, GREENE, POSEY, SULLIVAN, VANDERBURGH and WARRICK
COUNTIES

	Rates	Fringes
MILLWRIGHT ZONE 1 POSEY, VANDERBURGH and WARRICK COUNTIES.....	\$ 30.92	24.83
ZONE 2 GIBSON, GREENE AND SULLIVAN COUNTIES.....	\$ 29.64	25.77

ELEC0016-003 04/01/2022CRAWFORD, DAVIESS, DUBOIS, GIBSON, LAWRENCE, MARTIN, ORANGE,
PERRY, PIKE, POSEY, SPENCER, VANDERBURGH, WARRICK

	Rates	Fringes
ELECTRICIAN.....	\$ 40.88	18.62

ELEC0016-006 08/31/2020		

CRAWFORD, DAVIESS, DUBOIS, GIBSON, LAWRENCE, MARTIN, ORANGE,
PERRY, PIKE, POSEY, SPENCER, VANDERBURGH, WARRICK

	Rates	Fringes
ELECTRICIAN (Communication Technician Only).....	\$ 29.15	15.40

ELEC0071-006 01/02/2019		

DEARBORN, OHIO, and SWITZERLAND COUNTIES

	Rates	Fringes
Line Construction:		
Equipment Operator.....	\$ 33.62	13.46
Groundman.....	\$ 24.17	11.38
Lineman & Cable Splicers....	\$ 38.27	14.48

ELEC0153-003 06/01/2021		

ELKHART, KOSCIUSKO and MARSHALL COUNTIES

	Rates	Fringes
Communication Technician.....	\$ 26.50	18.33
ELECTRICIAN.....	\$ 36.50	25.98

Includes the installation, operation, inspection, modification, maintenance and repair of systems used for the transmission and reception of signals of any nature, for any purpose, including but not limited to , sound and voice transmission/transference systems, communication systems that transmit or receive information and /or control systems, television and video systems, micro-processor controlled fire alarm systems, and security systems and the performance of any task directly related to such installation or service. The scope of work shall exclude the installation of electrical power wiring and the installation of conduit raceways exceeding fifteen (15) feet in length.

ELEC0212-002 11/30/2021

DEARBORN, OHIO, and SWITZERLAND COUNTIES

	Rates	Fringes
ELECTRICIAN (Communication Technician Only).....	\$ 25.95	12.27

ELEC0212-009 06/07/2022		

DEARBORN, OHIO, and SWITZERLAND COUNTIES

Rates	Fringes
-------	---------

ELECTRICIAN.....\$ 33.29 20.05

ELEC0305-003 05/01/2022

ADAMS, ALLEN, DE KALB, HUNTINGTON, LAGRANGE, NOBLE, STEUBEN,
WELLS, and WHITLEY COUNTIES

Rates Fringes

ELECTRICIAN.....\$ 35.71 10.14+26.14%

ELEC0305-004 08/31/2020

ADAMS, ALLEN, DE KALB, HUNTINGTON, LAGRANGE, NOBLE, STEUBEN,
WELLS, and WHITLEY COUNTIES

Rates Fringes

ELECTRICIAN (Communication
Technician Only).....\$ 29.25 16.85

ELEC0369-005 05/31/2021

CLARK, FLOYD, HARRISON, JACKSON, JEFFERSON, SCOTT, and
WASHINGTON Counties

Rates Fringes

ELECTRICIAN.....\$ 33.85 18.72

ELEC0481-003 03/31/2022

BARTHOLOMEW, BOONE, DECATUR, HAMILTON, HANCOCK, HENDRICKS,
JENNINGS, JOHNSON, MADISON, MARION, MONTGOMERY, MORGAN, PUTNAM,
RIPLEY, RUSH AND SHELBY COUNTIES

Rates Fringes

ELECTRICIAN.....\$ 38.20 25.56

ELEC0481-004 01/01/2021

BARTHOLOMEW, BOONE, DECATUR, HAMILTON, HANCOCK, HENDRICKS,
JENNINGS, JOHNSON, MADISON, MARION, MONTGOMERY, MORGAN, PUTNAM,
RIPLEY, RUSH AND SHELBY COUNTIES

Rates Fringes

ELECTRICIAN (Communication
Technician Only).....\$ 30.64 17.22

ELEC0531-002 05/31/2021

JASPER, PULASKI, and STARKE COUNTIES

Rates Fringes

ELECTRICIAN.....\$ 41.50 28.26

ELEC0531-003 05/28/2018

JASPER, PULASKI, and STARKE COUNTIES

	Rates	Fringes
ELECTRICIAN (Communication Technician Only).....	\$ 27.64	13.23

ELEC0538-005 01/01/2022

FOUNTAIN, VERMILLION, and WARREN Counties

	Rates	Fringes
ELECTRICIAN.....	\$ 37.80	22.66

ELEC0538-009 09/01/2018

FOUNTAIN, VERMILLION, and WARREN Counties

	Rates	Fringes
ELECTRICIAN (Communication Technician Only).....	\$ 32.82	16.28

ELEC0668-001 06/01/2019

BENTON, CARROLL, CASS, FULTON, TIPPECANOE and WHITE COUNTIES

	Rates	Fringes
ELECTRICIAN (Communication Technician Only).....	\$ 28.90	14.53

ELEC0668-002 01/01/2022

BENTON, CARROLL, CASS, FULTON, TIPPECANOE and WHITE COUNTIES

	Rates	Fringes
ELECTRICIAN.....	\$ 36.17	21.40

FOOTNOTE: a. PAID HOLIDAYS: New Years Day, Memorial Day, July 4th, Labor Day, Veterans Day Thanksgiving Day and Christmas Day

ELEC0697-003 08/31/2021

NEWTON COUNTY

	Rates	Fringes
ELECTRICIAN (Communication Technician Only).....	\$ 35.75	28.77

ELEC0697-006 06/01/2022

NEWTON COUNTY

	Rates	Fringes
ELECTRICIAN.....	\$ 45.25	30.13

ELEC0702-003 12/30/2019

DUBOIS, GIBSON, PERRY, PIKE, POSEY, SPENCER AND VANDERBURGH
COUNTIES

	Rates	Fringes
Line Construction:		
GROUNDMAN, Class A.....	\$ 28.58	29% + 7.75
GROUNDMAN-EQUIPMENT OPERATOR (All other equipment).....	\$ 36.35	29% + 7.75
HEAVY-EQUIPMENT OPERATOR (All crawler type equipment D-4 and larger)...	\$ 41.49	29% + 7.75
LINEMAN.....	\$ 50.63	29% + 7.75

ELEC0725-007 06/01/2021

BROWN, CLAY, GREENE, KNOX, MONROE, OWEN, PARKE, SULLIVAN AND
VIGO COUNTIES

	Rates	Fringes
Communication Technician.....	\$ 29.56	15.96

Includes the installation, operation, inspection,
maintenance, repair and service of radio, television,
recording, voice sound and vision production and
reproduction apparatus, equipment and appliances used for
domestic, commercial, education, entertainment and private
telephone systems.

ELEC0725-014 10/01/2021

BROWN, CLAY, GREENE, KNOX, MONROW, OWEN, PARKE, SULLIVAN AND
VIGO COUNTIES

	Rates	Fringes
ELECTRICIAN.....	\$ 39.00	21.01

ELEC0855-002 06/01/2018

BLACKFORD, DELAWARE, FAYETTE, FRANKLIN, HENRY, JAY, RANDOLPH,
UNION and WAYNE Counties

	Rates	Fringes
ELECTRICIAN (Communication Technician Only).....	\$ 27.64	14.15

ELEC0855-004 06/01/2021

BLACKFORD, DELAWARE, FAYETTE, FRANKLIN, HENRY, JAY, RANDOLPH,
UNION and WAYNE Counties

	Rates	Fringes
ELECTRICIAN.....	\$ 33.57	19.03

 ELEC0873-001 06/01/2021

CLINTON, GRANT, HOWARD, MIAMI, TIPTON, AND WABASH COUNTIES

	Rates	Fringes
ELECTRICIAN (Communication Technician Only).....	\$ 30.08	17.23

ELEC0873-002 03/01/2022

CLINTON, GRANT, HOWARD, MIAMI, TIPTON AND WABASH COUNTIES:

	Rates	Fringes
ELECTRICIAN.....	\$ 36.59	20.12

ELEC1393-001 12/02/2020

REMAINING COUNTIES

	Rates	Fringes
Line Construction:		
EQUIPMENT OPERATOR 1:		
Diggers, 5th wheel type		
trucks, crawler type, D-4		
and smaller, bucket trucks		
and live boom type line		
trucks.....	\$ 32.91	29%+6.75
EQUIPMENT OPERATOR 3		
(Backhoes over 1/2 yard		
bucket capacity, cranes		
rated at 15 ton or more		
capacity) 95% J.L. rate.....	\$ 39.19	29%+6.75
GROUNDMAN TRUCK DRIVER.....	\$ 26.14	29%+6.75
GROUNDMAN.....	\$ 25.04	29%+6.75
LINEMAN.....	\$ 41.61	29%+6.75

ENGI0103-003 04/01/2021

INCLUDING UNDERGROUND AND UTILITY CONSTRUCTION

ADAMS, ALLEN, BENTON, BLACKFORD, CARROLL, CASS, CLINTON, DEKALB, DELAWARE, FAYETTE, GRANT, HAMILTON, HANCOCK, HENRY, HOWARD, HUNTINGTON, JAY, JOHNSON, MADISON, MARION, MIAMI, RANDOLPH, RUSH, SHELBY, STEUBEN, TIPPECANOE, TIPTON, UNION, WABASH, WAYNE, WELLS, WHITE AND WHITLEY COUNTIES

	Rates	Fringes
Power equipment operators:		
GROUP 1.....	\$ 37.75	20.21
GROUP 2.....	\$ 36.03	20.21
GROUP 3.....	\$ 35.11	20.21
GROUP 4.....	\$ 33.61	20.21

POWER EQUIPMENT OPERATOR CLASSIFICATIONS

GROUP 1: Air compressors in manifold with throttle valve;
 Asphalt plant engineer; Auto grade or similar type machine;
 Auto patrol; Backhoe or farm-type tractor, 45 hp and over;
 Ballast regulator (RR); Bituminous mixer; Bituminous paver;

Bituminous plant engineer; Bulldozer; Caisson drilling machine; Cherry picker, 15 ton or over; Chip spreader; Concrete mixer 21 cu. ft. or over; Core drilling machine; Crane or derrick with any attachment (including clamshell, dragline, shovel, backhoe, etc.); Dredge engineer; Dredge operator; Drilling machine on which the drill is an integral part; Earth mover, rubber-tired (paddle wheel, 616, 631, TS-24 or similar type); Earth mover, rubber-tired, tandem (\$0.50 per hour additional for each bowl); Elevating grader; Fork lift, 10 ton or over; P.C.C. formless paver post driver; Highlift shovel, 1 1/2 cu. yd. or over; Hoist, 2 drums and over; Helicopter, crew; Hydraulic boom truck; keystone, skimmer scoop; Loader, self-propelled (belt, chain, wheel); Locomotive operator; Mechanic; Mucking machine; Panel board concrete plant, central mix type; Paver, Hetherington; Pile driver, skid or crawler; Road paving mixer; Rock breaking plant; Rock crushing plant, portable; Roller (asphalt, waterbound macadam, bituminous macadam, brick surface); Roller with dozer blade; Root rake, tractor-mounted; Self-propelled widener; Stump remover, tractor-mounted; Surface heater and planer; Tandem push tractor (\$0.50 per hour additional); Tractor, boom; Winch or hoe head; Tractor, push; Tractor with scoop; Tractor-mounted spreader; Tree mover; Trench machine, over 24"; Tug boat operator; Well drilling machine; Winch truck with A-frame

GROUP 2: Air compressor with throttle valve or clever brooks-type combination; Backfiller; Backhoe on farm-type tractor, under 45 hp; Bull float; Cherry picker under 15 ton; Chip spreader, self-propelled; Concrete pump; Concrete mesh depressor, independently operated; Concrete spreader, power-driven; End loader under 1 1/2 cu. yd.; Excavating loader, portable; Finishing machine and bull float; Gunite machine; Head greaser; Mesh or steel placer; Multiple tamping machine (RR); P.C.C. concrete belt placer; Pull grader, power control; Refrigerating machine, freezing operation; Ross carrier; Sheepfoot roller (self-propelled); Tamper (multiple vibrating, asphalt, waterbound macadam, bituminous macadam, brick surface); Trench machine, 24" and under; Tube float; Welder

GROUP 3: Assistant plant engineer; Base paver (Jersey or similar type machine); Concrete finishing machine; Concrete mixer, less than 21 cu. ft.; Curb machine; Farm tractor, including farm tractor with all attachments except backhoe and including high lift end loaders of 1 cu. yd. capacity or less; Fire tender on boiler; Hoist, 1 drum; Operator, 5 pieces of minor equipment; Paving breaker; Power broom, self-propelled; Roller, earth and sub-base material; Slurry seal machine; Spike machine (RR); Tamper (multiple vibrating, earth and sub-base material); Throttle valve and fire tender combination on horizontal or upright boiler; Tractaire with drill; Tractor, 50 h.p. or over; Well point system; Widener, APSCO or similar type

GROUP 4: Air compressor; Assistant to engineer, oiler; Automatic dry batch plant; Bituminous distributor; Bituminous patching tamper; Belt spreader; Broom and belt machine; Chair cart, self-propelled; Coleman-type screen; Conveyor, portable; Digger post hole, power-driven; Fork lift, under 10 ton; Form grader; Form tamper, motor-driven; Generator; Hetherington driver; Hydra seeder; Operator, 1 through 4 pieces of minor equipment; Outboard or inboard motor boat; Power curing spraying machine; Power saw,

concrete, power-driven; Pug mill; Pull broom, power-type; Seaman tiller; Straw blower or brush mulcher; Striping machine paint, motor-driven; Sub grader; Tractaire, tractor, below 50 h.p.; Truck crane oiler, driver; Spreader; Water pump; Welding machine, 2 of 300 amps or over

 ENGI0150-009 04/01/2022

HEAVY, HIGHWAY AND RAILROAD CONSTRUCTION

ELKHART, FULTON, JASPER, KOSCIUSKO, LAGRANGE, MARSHALL, NEWTON, NOBLE, PULASKI, and STARKE COUNTIES

	Rates	Fringes
POWER EQUIPMENT OPERATOR		
GROUP 1.....	\$ 32.85	32.30
GROUP 2.....	\$ 31.25	32.30
GROUP 3.....	\$ 29.95	32.30
GROUP 4.....	\$ 28.55	32.30
GROUP 5.....	\$ 24.30	30.85

POWER EQUIPMENT OPERATOR CLASSIFICATIONS

GROUP 1: Air compressors in manifold with throttle valve; Asphalt plant engineer; Auto grade or similar type machine; Auto patrol; Automatic Sub-Grade; Backhoe or farm type tractor, 45 hp and over; Ballast regulator (RR); Barrier Wall Machine; Batch Plants (Concrete & Asphalt); Bituminous mixer; Bituminous paver; Bituminous plant engineer; Boring Machine; Bulldozer; Caisson drilling machine; Cherry picker, 15 ton or over; Chip spreader; Concrete mixer, 21 cu. ft. or over; Concrete Belt Placer; Concrete Paver; Concrete Pump (Truck Mounted); Concrete Saw (track mounted); Concrete Spreader (power driven); Core drilling machine; Crane or derrick with any attachment (including clamshell, dragline, shovel, backhoe, etc.); Curb Machine; Gutter Machine; Dredge engineer; Dredge operator; Drilling machine on which the drill is an integral part; Earthmover, rubber-tired (paddle wheel, 616, 631, TS-24 or similar type); Earthmover, rubber-tired, tandem (.50 per hr. additional for each bowl); Elevating Grader; Forklift (10 ton or over); P.C.C. Formless Paver; Gradall; Gravel Processing Plant (portable); Operator of Guard Rail Post Driver; Highlift Shovel 1-1/2 cu.yd. or over) Frame; Hoist (2 drum & over); Helicopter crew; Hydraulic boom truck; Hydraulic Excavator; Loaded-Self propelled (belt chain wheel); Laser Screed; Locomotive operator; Mechanic; Mucking machine; P.C.C. Concrete Belt Placer; Panel board concrete plant (central mix type); Paver (Hetherington); Pavement Breaker; Pile driver, skid or crawler; Road paving mixer; Rock breaking plant; Rock crushing plant (portable); Roller (asphalt, waterbound macadam, bituminous macadam, brick surface); Roller with dozer blade; Road Widener; Root rake (tractor-mounted); Roto Mill Grinder; Self-propelled widener; Stump remover; Surface heater and planer; Tandem push tractor (\$0.50 per hour additional); Tractor, boom; Winch or hoe head; Tractor (push); Tractor with scoop; Tractor-mounted spreader; Tree mover; Trench machine, over 24"; Tug boat operator; Well drilling machine; Widener (Apsco or similar type); Winch truck with A-frame

GROUP 2: Air compressor with throttle valve or Clever Brooks type combination; Backfiller; Farm type tractor (under 45 H.P.); Cherry picker under 15 ton; Chip spreader (self-propelled); Concrete pump (trailer type); Concrete mesh depressor, independently operated; End loader under 1 1/2 cu. yd.; Excavating loader (portable); Finishing machine and bull float; Guniting machine; Hydraulic Power unit; Head greaser; Mesh or steel placer; Multiple tamping backhoe on machine (RR); Bull float (bidwell Machine); Refrigerating machine-operation; Ross Carrier; Sheepfoot roller (self-propelled); Tamper-Multiple Vibrating (Asphalt, Waterbound, Macadam, Bituminous Macadam, Brick Surface); Trench machine (24" and under); Tube float; Water Pull/Wagon; Welder

GROUP 3: Plant engineer; Base paver (Jersey or similar type machine); Concrete finishing machine; Concrete mixer, less than 21 cu. ft.; Curb machine; Farm tractor, including farm tractor with all attachments except backhoe and including high lift end loaders of 1 cu. yd. capacity or less; Fireman, on boiler; Hoist, 1 drum; Operator, 3-5 pieces of minor equipment; Paving breaker; Power broom, self-propelled; Roller, earth and sub-base material; Power Saw-Concrete (Power Driven); Slurry seal machine; Spike machine (RR); Sub-surface Material Distributor; Tamper (multiple vibrating, earth and sub-base material); Throttle valve; Throttle Valve and fireman combination on horizontal or upright boiler; Tractaire with drill; Well Point

GROUP 4: Air compressor; Assistant to engineer, oiler; Bituminous patching tamper; Belt spreader; Broom and belt machine; Chair cart, self-propelled; Coleman-type screen; Conveyor, portable; Deck-hand Digger post hole, power-driven; Forklift, under 10 ton; Form grader; Form tamper, motor-driven; Generator; Hetherington driver; Hydra seeder; Mechanic heater; Operator, 2 pieces of minor equipment; Outboard or inboard motor boat; Power curing spraying machine; Pug mill; Pull broom, power type; Seaman tiller; Skid steer loader over 3/4 cu. yd.; Straw blower or brush mulcher; Striping machine paint, motor-driven; Sub-grader; Tractaire; Tractor, below 50 h.p.; Truck crane oiler; Spreader; Water pump

GROUP 5: Skid steer loader under 3/4 cu. yds

 ENGI0150-039 06/01/2021

UNDERGROUND & UTILITY CONSTRUCTION:

JASPER, NEWTON, PULASKI AND STARKE COUNTIES:

	Rates	Fringes
POWER EQUIPMENT OPERATOR		
GROUP 1.....	\$ 42.00	39.68
GROUP 2.....	\$ 41.20	39.68
GROUP 3.....	\$ 36.90	39.68
GROUP 4.....	\$ 34.70	39.68
GROUP 5.....	\$ 29.25	39.68

POWER EQUIPMENT OPERATOR CLASSIFICATIONS

GROUP 1: Asphalt plants (construction), Asphalt plant (permanent), Auto Patrol (Maintainer), Automatic Dry

Batch Plant, Automated Concrete Placer, Automated Sub-Grader, Automated Slip Form Paver, Automated Finish Machine, Combination Backhoe Front, End Loader Machine (1/2 cu. yd.), Backhoe bucket or over or with attachments), Combination backhoe 1 cu yd, Backhoe bucket or over or with attachments, Ballast Regulator (RR), Belt Loader (stationary), Boring Machine (road), Bulldozer, Concrete Mixer (27 cu. ft. or over), Concrete Pump (truck mounted), Concrete Breaker (truck mounted and self-propelled), Core Drilling Machine, Cranes and Backhoes (all attachments), Cranes, Hammerhead, Cretor Crane, Crushers (concrete, rock, recycling, etc.), Derricks, Derricks (traveling), Dredge Operator, Formless Curb and Gutter Machine (36 inches and over), Formless Curb and Gutter Machine under 36 inches, Gradall and Machines (of a like nature), Guardrail Post Driver (truck mounted), Lead Greaser, Helicopter, Highlift Shovel (3 yd. and over), Hoist (1 drum), Hoist (2, and 3 drums), Hydraulic Power Units (grouting, piledriving and extracting) Hydro or water blaster (self-propelled), Locomotive Operators, Mechanic, Welder, Mucking Machine, Panelboard Concrete Plant (central mix type), Paver (Hetherington), Pile Driver (Skid or Crawler), Road Paving Mixer, Rock Drill Crawler or Skid Rig, Rock Drill (truck Mounted), Ross Carrier, Roto Mill Grinder (36" and over), Roto mill grinder (less than 36"), Throttle Valve and Compressor or Clever Brooks Type Combination, Throttle Valve and Fireman Combination or Horizontal or Upright Boiler, Tournapull or similar type equipment, Tractor (boom), Tractor Drawn Belt Loader with attached Pusher (requires two engineers), Trench Machine, Tug Boat Operator, Wheel Excavator, Winch Tractor with "a" frame, Scoops, Turnapull or similar types machine used in Tandem (add \$1.00 to class 1 hourly rate for each machine attached there to).

GROUP 2: Combination Backhoe Front End Loader Machine with less than 1/2 cu. yd., Backhoe Bucket or with attachments, Bituminous Mixer, Bituminous Paver, Bridge Deck Finisher, Concrete Mixer (less than 27 cu. ft.), Compressor and throttle valve, Compressor (common receiver 3), Greaser, Highlift Shovels (under 3 cu. yds.), Jersey Spreader or Base Paver, Pavement Bump Grinder (self-propelled), Roller (Asphalt, waterbound, Macadam, Bituminous Macadam, Brick Surface, Sheepfoot Roller (self-propelled with blade), Surface Heater and Planer, Tamper (multiple vibrating, asphalt waterbound macadam, bituminous macadam, brick surface), Tractor (push), Tractor with scoop, Widener, Apsco or similar type.

GROUP 3: Back Filler, Bituminous Distributor, Broom and Belt Machine, Bull Float, Compressor (common receiver 2), Concrete cutter wheel type (rockwell), Concrete Finishing Machine, Concrete Spreader (power driven), Digger, Post Hole (power driven), Finishing Machine and Bull Float, Forklift, Form Grader, Form Tamper (motor driven), Hydraulic (boom truck) when used for hauling materials, Laser screed, Multiple Tamping Machine, Paving Breaker, Roller (earth and subbase material), Roller sheepfoot (self-propelled), Sub-grader, Tamper, Multiple Vibrating (earth and subbase material), Tractaire with Drill, Tractor (with all drawn attachments except backhoe and including Highlift, Endloader of 1 cu. yd. capacity and less.

GROUP 4: Air Compressors, Conveyor (all), Fireman on Boiler, Generator, Grout Machine, Power curing Spraying Machine

(self-propelled), Broom (self-propelled), Seaman Tiller, Skid steer loaders, Spike Machine (RR), Stripping Machine (paint, self-propelled), Throttle Valve, Welding Machine, Well Points System.

GROUP 5: Deck Hand, Hetherington Driver, Mechanical Heater (1 to 5), Outboard or Inboard Motor Boat, Oiler, Power Saw (Concrete Power Driven), Water Pump, Grasscutter.

ENGI0181-014 04/01/2022

HEAVY AND HIGHWAY CONSTRUCTION:

BARTHOLOMEW, BROWN, CLARK, CRAWFORD, DEARBORN, DECATUR, DUBOIS, FLOYD, FRANKLIN, GIBSON, HARRISON, JACKSON, JEFFERSON, JENNINGS, LAWRENCE, MARTIN, OHIO, ORANGE, PERRY, PIKE, POSEY, RIPLEY, SCOTT, SPENCER, SWITZERLAND, VANDERBURGH, WARRICK, and WASHINGTON COUNTIES

	Rates	Fringes
Power equipment operators:		
GROUP A.....	\$ 39.50	18.56
GROUP B.....	\$ 36.85	18.56
GROUP C.....	\$ 34.72	18.56

POWER EQUIPMENT OPERATOR CLASSIFICATIONS

GROUP A: Air compressor in manifold with throttle valve; Asphalt plant engineer; Auto grade or similar type machine; Bituminous mixer; Bituminous paver; Bituminous plant engineer; Bulldozer; Caisson drilling machine; Cherry picker, all; Ballast regulator (RR); Chip spreader, self-propelled; Cold grinder or similar type equipment; Concrete mixer, 21 cu. ft. or over; Concrete pump, truck-mounted; Core drilling machine; Crane or derrick with any attachment (including clamshell, dragline, shovel, backhoe, etc.); Dredge operator; Drilling machine on which the drill is an integral part; Earth mover, rubber-tired, tandem 0.50 per hour additional; Elevating grader; Endloader, Hi- lift shovel; P.C.C. formless paver; Gradall; Gravel processing plant, portable; Guardrail post driver operator; Head greaser; Hi-lift shovel, endloader; Hoist (2 drums and over); Helicopter crew; Hydraulic boom truck, Keystone, Skimmer Scoop; Loader, self-propelled (belt, chain wheel); Locomotive operator; Mechanic; Mucking machine; Multi-bank drill operator; Panel board concrete plant, central mix type; Paver, Hetherington; Pile driver, skid or crawler; Road paving mixer; Rock breaking plant; Rock crushing plant, portable; Roller (asphalt, waterbound, macadam, bituminous macadam, brick surface); Roller, with dozer blade; Root rake, tractor-mounted; Stump remover, tractor- mounted; Surface heater and planer; Tandem push tractor, \$0.50 per hour additional; Tractor, boom winch or hoe head; Tractor, push; Tractor with scoop; Tractor-mounted spreader; Tree mover; Trench machine, over 24"; Tug boat operator; Welder; Well drilling machine; Self-propelled widener.

GROUP B: Air compressor with throttle valve or clever brooks-type combination; Backfiller, base paver, Jersey or similar type machine; Bull float; Concrete finishing machine; Concrete mesh depressor, independently operated;

Concrete spreader, power- driven; Dredge engineer;
 Excavator loader, portable; Fire tender on boiler;
 Forklift, regardless of ton; Hoists, 1 drum; Mesh or steel
 placer; Minor equipment operator, 5 pieces; Multiple
 tamping machine (RR); P.C.C. concrete placer; Paving
 breaker; Power broom, self-propelled;
 Pull grader, power-controlled; Refrigerating machine,
 freezing operation; Roller, earth and sub- base material;
 Ross carrier (Straddle buggy); Sheepfoot roller,
 self-propelled without blade; Tamper, multiple\vibrating
 (asphalt, waterbound macadam, bituminous macadam, brick
 surface); Tamper, multiple vibrating (earth and sub-base
 material); Trench machine, 24"" and under; Tube float; Well
 point system; Widener, Apsco or similar type; Winch truck
 with A-frame.

GROUP C: Air compressor, oiler; Automatic dry batch plant;
 Bituminous distributor; Bituminous patching tamper; Belt
 spreader; Broom and belt machine; Brush burner; Chair cart,
 self- propelled; Coleman-type screen; Cold grinder oiler;
 Concrete mixer, less than 21 cu. ft.; Conveyor, portable;
 Curb machine; Deckhand; Digger (post hole, power-driven);
 Farm tractor, including farm tractor with all attachments
 (except backhoe, Hi- lift endloaders); Form grader; Form
 tamper, motor-driven; Generator; Guniting machine;
 Hetherington driver; Hydra seeder; Mechanical heater; Minor
 equipment operator, 1 through 4 pieces; Curing spraying
 machine; Power saw, concrete (power-driven); Pug mill pull
 broom, power type; Seaman tiller; Slurry seal machine;
 Spike machine; Straw blower or brush mulcher; Stripping
 machine (paint, motor-driven); Sub grader; Throttle valve;
 Tractaire with drill; Truck crane and multi-drill oiler,
 driver; Spreader; Water pump.

 ENGI0181-015 04/01/2022

SEWER WATERLINE & UTILITY CONSTRUCTION:

BARTHOLOMEW, BROWN, CLARK, CRAWFORD, DEARBORN, DECATUR, DUBOIS,
 FLOYD, FRANKLIN, GIBSON, HARRISON, JACKSON, JEFFERSON,
 JENNINGS, LAWRENCE, MARTIN, OHIO, ORANGE, PERRY, PIKE, POSEY,
 RIPLEY, SCOTT, SPENCER, SWITZERLAND, VANDERBURGH, WARRICK, and
 WASHINGTON COUNTIES

	Rates	Fringes
Power equipment operators:		
GROUP A.....	\$ 39.50	19.28
GROUP B.....	\$ 36.85	19.28

SEWER WATERLINE & UTILITY CONSTRUCTION

GROUP A: A-frame winch truck; Air compressor 900 cu. ft. and
 over; Air tugger; Autograde (CMI); Auto patrol; Backhoe;
 Ballast regulator (RR); Batch plant (electrical control
 concrete); Bending machine (pipe); Bituminous plant
 (engineer); Bituminous plant; Bituminous mixer travel
 plant; Bituminous paver; Bituminous roller; Buck hoist;
 Bulldozer; Cableway; Chicago boom; Clamshell; Concrete
 mixer, 21 cu. ft. or over; Concrete paver, concrete pump,
 crete; Crane; Craneman; Crusher plant; Derrick; Derrick
 boat; Dinky; Dope pots (pipeline); Dragline; Dredge
 operator; Dredge engineer; Drill operator; Elevator grader;

Elevator; Ford hoe, or similar type equipment; Forklift; Formless paver; Gantry crane; Gradall; Graderman; Hopto; Hough loader or similar type; Hydro crane; Motor crane; Mucking machine; Multiple tamping machine (RR); Overhead crane; Pile driver; Pulls; Push dozer; Push boats; Roller (sheep foot); Ross Carrier; Scoop; Shovel; Side boom; Swing crane; Trench machine; Welder (heavy duty; Truck-mounted concrete pump; Truck-mounted drill; Well point; Whirleys.

GROUP B: Air compressor, up to 900 cu. ft.; Brakeman; Bull float; Concrete mixer, over 10S and under 21S; Concrete spreader or puddler; Deck engine; Electric vibrator compactor (earth or rock); Finishing machine; Fireman; Greaser, on grease facilities servicing heavy equipment; Material pump; Motor boats; Portable loader; Post hole digger; Power broom; Rock roller; Roller, wobble wheel (earth and rock); Spike machine (RR); Seaman tiller; Spreader rock; Sub grader; Tamping machine; Welding machine; Widener, Apsco or similar type; Bituminous distributor; Cement gun; Concrete saw; Conveyor; Deckhand oiler; Earth roller; Form grader; Generator; Guard rail driver; Heater; JLG lifts; Oiler; Paving joint machine; Power traffic signal; Scissor lift; Steam Jenny; Truck crane oiler; Vibrator; Water pump.

 ENGI0841-011 04/01/2020

HEAVY, HIGHWAY AND UTILITY CONSTRUCTION

BOONE, CLAY, DAVIESS, FOUNTAIN, GREENE, HENDRICKS, KNOX, MONROE, MONTGOMERY, MORGAN OWEN, PARKE, PUTNAM, SULLIVAN, VERMILLIAN, VIGO, and WARREN COUNTIES

	Rates	Fringes
Power equipment operators:		
GROUP 1.....	\$ 33.75	23.00+a
GROUP 2.....	\$ 27.50	23.00+a

POWER EQUIPMENT OPERATOR CLASSIFICATIONS

GROUP 1: Air Compressor Over 600 CU FT, Air Compressors (2), Compressors hooked in Manifold, Asphalt Plant Engineer, Auto Grade and/or C.M.I. or similar type Machine, Auto Patrol, Motor Patrol, Power Blade, Aspco Paver, Asphalt Planer, Asphalt Rollers, Asphalt Paver Operator, Concrete or Asphalt Milling Machine, Self Propelled Widener, Backhoe and/or Pavement Breaker Attachment, Self Propelled Pavement Breaker, Ballast Regulator (R.R), Bituminous Mixer, Bituminous Paver, Bituminous Plant Engineer, Bulk Cement Plant Engineer, Bulldozer, One Drum Hoist with Tower or Boom, Cableways, Tower Machines, Back Filler, Boom Tractor, Boom or Winch Truck, Winch or Hydraulic Boom Truck, Boring Machine, Bolier Operator, Brush Mulcher, Bull Float, Finishing Machine, Power Cranes, Overhead Cranes, Truck cranes, Piledriver, Skid or Crawler, Guard Rail Post Driver, Tower Cranes, Hydro Crane, Cherry Picker, Draglines, Derricks, Shovels, Clam, Gradalls, Two Drum Machine, Concrete or Asphalt Curb Machine, Self Propelled, Concrete Mixers with Skid, Tournamixer, Concrete Pump (Truck or Skid Mounted), Concrete Plant Engineer, Soil Cement Machine, Formless Paver, Concrete Spreader, Span Saw (and similar types), Chip Spreader, Mesh Placer, Dredging

Equipment or Dredge Engineer or Dredge Operator, Tug Boat Operator, Marine Scoops, Ditching Machine with Dual Attachment, Standard or Dinkey Locomotives, Drilling Machine, including Well Testing, Caissons, Shaft or any similar type Drilling Machine (Well Point Systems), 4 Point Life System (Power Lift or similar type), Mud Cat, Mucking Machine, Sull-Air, Mechanics, Welder, Head Equipment Greaser, Tournapull, Tractor Operating Scoops, Push Tractors, Large Rollers on Earth, Loaders (Track or Rubber Mounted), or similar type Machine, Lull, Tornadoizer, Scoopmobiles, Elevating Machines, Power Broom (Self Propelled), Power Sub Grader, Hydra Ax, Farm Tractor with Attachments, Soil Stabilizer (Seaman Tiller, Bo mag, Rago Gator and similar types of equipment), Tree Mover, Stump Remover, Root Rake, Hydra Seeder, Straw Blower, Refrigerating Machine, Freezing Operator, Chair Cart-Self Propelled, Helicopter Crew (3), Ross Carrier or Straddle Buggy or similar Machine, Rock Crusher Plant, Gravel Processing Machine, Pipe Cleaning Machine, Pipe Wrapping Machine, Pipe Bending Machine, Pug Mill, Concrete Bump Grinder Machine, Power Curing Spray Machine, Forklift (except when used for landscaping), Snooper Truck Operator.

GROUP 2: Air Compressor 600 cu. ft. and under, Air Tugger, Air Valves, Assistant Concrete Plant Engineer, Assistant Asphalt Plant Engineer, Asphalt Plant Fireman, Bulk Cement Plant Equipment Greaser, Concrete Mixers without Skips, Curbing Machine, Concrete Saw (Self Propelled), Conveyors, Cement Blimps, Ditching Machine under 6", Distributor Operator On trucks, Deck Hands, Elevators when used for hoisting material, Engine Tenders, Fork Lift (when used for landscaping), Farm Tractor, Fireman, Fireman on Paint or Dope Pots, Form Tamper, Form Grader, Flex Plane, Generators (two to four), or Welding Machines or Water Pumps, within 400 feet, Gunite Machine, Machine Mounted Post Hole Digger, Mude Jack, One Drum Machines without Tower or Boom, One Water Pump, One Welding Machine, Outboard or Inboard Motor Boat, Pull Broom (Power Type, Siphons and Pulsometer, Switchman, Striping and or Painting Machine (motor driven), Slurry Seal Machine, Track Jack, Temporary Heat, Throttle Valve, Tube Float, Tractaire, Wagon Drill, Multiple Tamping Machine (R.R.), Spike Machine (R.R.), Mechanical Heaters, Brush Burner, Vacuum Truck (Super Sucker and similar types).

FOOTNOTES:

A. Employees operating booms from 149Ft. to 199 Ft. including jib, shall receive an additional seventy-five Cents (.75) per hour above the rate. Employees operating booms over 199 Ft. including jib, shall receive an additional one dollar and twenty-five cents (\$1.25) per hour above the regular rate.

B. Employees operating scoops, pulls, or tractors hooked in tandem shall receive an additional one dollar (\$1.00) per hour above the regular rate.

C. Employees operating scoops, pulls, or tractors pulling any other hauling unit in tandem shall receive an additional one dollar (\$1.00) per hour above the regular rate.

D. Underground work - Employees working in tunnels, shafts, etc. shall be paid a thirty percent (30%) premium above the

wage rate.

IRON0022-001 06/01/2021

BARTHOLOMEW, BENTON, BOONE, BROWN, CARROLL, CASS, CLAY, CLINTON, DAVIESS (REMAINDER OF COUNTY), DECATUR (W 3/4), DELAWARE (REMAINDER OF COUNTY), FAYETTE (W 1/3), FOUNTAIN, FRANKLIN (NW TIP), FULTON (REMAINDER OF COUNTY), GRANT (REMAINDER OF COUNTY), GREENE, HAMILTON, HANCOCK, HENDRICKS, HENRY, HOWARD, JACKSON, JASPER (SOUTHEASTERN 1/2), JENNINGS (NORTHWEST 2/3), JOHNSON, KNOX (REMAINDER OF COUNTY), LAWRENCE, MADISON, MARION, MARTIN (NW 2/3), MIAMI (REMAINDER OF COUNTY), MONROE, MONTGOMERY, MORGAN, NEWTON (SOUTHERN 1/2), OWEN, PARKE, PULASKI (REMAINDER OF COUNTY), PUTNAM, RANDOLPH (SW TIP), RUSH (REMAINDER OF COUNTY), SHELBY, SULLIVAN, TIPPECANOE, TIPTON, VERMILLION, VIGO, WAYNE, WARREN AND WHITE COUNTIES:

	Rates	Fringes
IRONWORKER.....	\$ 33.90	24.70

The following holidays shall be observed: New Year's Day, Memorial Day, Independence Day, Labor Day, Thanksgiving Day and the day after Thanksgiving and Christmas Day. Any holiday which occurs on a Sunday shall be observed the following Monday, unless the legal observance of these holidays is changed by law.

IRON0044-010 06/01/2022

DEARBORN, DECATUR (REMAINDER OF COUNTY), FAYETTE (REMAINDER OF COUNTY), FRANKLIN (REMAINDER OF COUNTY), JEFFERSON (REMAINDER OF COUNTY), JENNINGS (REMAINDER OF COUNTY), OHIO, RIPLEY, RUSH (SOUTHEASTERN TIP), SWITZERLAND, AND UNION (SOUTHERN 1/3)

	Rates	Fringes
Ironworkers:		
FENCE ERECTORS.....	\$ 30.28	22.30
ORNAMENTAL.....	\$ 31.87	22.30
STRUCTURAL, MACHINERY		
MOVERS, RIGGERS.....	\$ 31.87	22.30

IRON0070-002 06/01/2022

CLARK, CRAWFORD, FLOYD, HARRISON, JACKSON (SOUTHERN 3/4); JEFFERSON (EXCLUDING NORTHEASTERN TIP); JENNINGS (SOUTHERN 3/4), LAWRENCE (SOUTHERN 2/3), MARTIN (SOUTHEASTERN 2/3), ORANGE, PERRY (EASTERN 3/4); SCOTT AND WASHINGTON COUNTIES:

	Rates	Fringes
IRONWORKER.....	\$ 31.79	24.62

IRON0070-016 06/01/2022

DEARBORN, DECATUR (REMAINDER OF COUNTY), FAYETTE (SE CORNER), FRANKLIN (S 3/4), OHIO, RIPLEY (REM. OF COUNTY), SWITZERLAND (REMAINDER OF COUNTY) and JENNINGS (NE TIP) COUNTIES

	Rates	Fringes
IRONWORKER (Reinforcing).....	\$ 31.79	24.62

IRON0103-001 04/01/2021		

DAVIESS (S 1/2), DUBOIS, GIBSON, KNOX (S 1/2), MARTIN (SW 1/3),
PERRY (W 1/4), PIKE, POSEY, SPENCER, VANDERBURGH, AND WARRICK

	Rates	Fringes
IRONWORKER.....	\$ 30.00	25.66

* IRON0147-004 06/01/2022		

ADAMS, ALLEN, BLACKFORD, DEKALB, DELAWARE (NORTHEAST THIRD OF
COUNTY), FULTON (EASTERN PART), GRANT (EXCLUDING SOUTHWEST
PORTION), HUNTINGTON, JAY, MIAMI (NORTHEAST HALF), NOBLE
(EXCLUDING NORTHEAST TIP), STEUBEN, WABASH, WELLS, and WHITLEY
COUNTIES

	Rates	Fringes
IRONWORKER.....	\$ 31.20	25.12

IRON0290-004 06/01/2022		

FAYETTE (NE 1/4), RANDOLPH (S. PART OF COUNTY EXCLUDING
WINCHESTER BUT INCLUDING UNION CITY) UNION (NORTHERN 2/3) AND
WAYNE (REMAINDER OF COUNTY) COUNTIES

	Rates	Fringes
Ironworkers:.....	\$ 31.59	24.40

IRON0292-005 06/01/2022		

ELKHART, FULTON (North 2/3), KOSCIUSKO (Remainder of County),
LAGRANGE (West 1/3), MARSHALL, MIAMI (Northwestern Tip), NOBLE
(Northwestern Tip), PULASKI (Northeast Half), and STARKE
COUNTIES

	Rates	Fringes
IRONWORKER.....	\$ 33.62	24.25

IRON0395-002 06/01/2022		

JASPER (NORTHERN 1/2), NEWTON (NORTHERN 1/2), PULASKI
(NORTHWESTERN TIP) COUNTIES

	Rates	Fringes
IRONWORKER		
IRONWORKERS.....	\$ 43.00	37.24
SHEETER.....	\$ 41.75	34.54

LABO0041-003 04/01/2022		

HEAVY & HIGHWAY CONSTRUCTION

NEWTON COUNTY

	Rates	Fringes
LABORERS		
Group 1.....	\$ 31.74	23.63
Group 2.....	\$ 32.04	23.63
Group 3.....	\$ 32.74	23.63

LABORERS CLASSIFICATIONS (HEAVY AND HIGHWAY)

GROUP 1: Construction Laborer, Carpenter Tender, Fence Erector, Grade Checker, Guard Rail Erector, Continuous Steel Rod or Mat Installer, Wire Mesh Layer, Joint Man (Mortar, Mastic, and all other types), Lighting Installer (Permanent or Temporary), Lineman for Automatic Grade Maker on Paving Machines, Mortar Man, Multi-Plant Erector, Rip-rap Installer (all Products and Materials), Road Marking and Delineation Laborer, Setting and Placing of all Precast Concrete Products, Sing Installation including supporting structure, Spraying of all Epoxy, Curing Compound, or Like Material, Flagperson, Air Tool, Power Tool Operator, Asphalt Raker Man, Batch Truck Dumper, Bridge Hand Rail Erector, Handler (bulk or bag cement), Chain Saw Man, Concrete Puddler, Concrete Rubber, Concrete Saw Operator, Core Drill Operator, Eye Level, Hand Blade Operator Hydro Seeder Man, Motor Driven Georgia Buggy Operator, Power Driven Compactor or Taper Operator, Power Saw Operator, Pump Crete Assembly Man, Sreed Man or Screw Man on Asphalt Paver, Regar Installer, Sandblaster Man, Sealer Applicator for Asphalt (toxic), Setting and Placing pre-stressed on Pre-cast Concrete Structural Members, Side Rail Setters (for Sidewalk, Side Ditches, Radii, and Pavement), Spreader Box Tender (manua or power driven), Straw Blower Man, Subsurface Drain and Culvert Pipe Layer, Concrete Conveyor, Horizontal Boring and Jackman and Sheetman, Pipe Greade Man, Winch and Windless Operator Conduit Installer, Sod Layer

GROUP 2: Cutting Torch Burner, Laser Beam Aligner, Manhole Erector, Sewer Pipe Layer, Water Line Installer, Temporary or Permanent Welders (electric or Oxy Acetylene)

GROUP 3: Air Track and Wagon Drillman, Dynamite and Powder Man, Concrete Barrier Rail Form Setter, Concrete Saw Joint Control Cutting

LAB00041-005 04/01/2022

UTILITY CONSTRUCTION

JASPER & NEWTON COUNTIES

	Rates	Fringes
Laborers:		
GROUP 1.....	\$ 31.74	23.63
GROUP 2.....	\$ 32.04	23.63
GROUP 3.....	\$ 32.74	23.63

LABORERS CLASSIFICATIONS (UTILITY CONSTRUCTION)

GROUP 1: Construction laborer; Fence erector; Flagger; Grade checker; Guard rail erector; Wire mesh layer; Joint man (mortar, mastic and all other types); Lighting installer (permanent or temporary); Lineman for automatic grade maker on paving machines; Mortar man; Multi-plate erector; Rip-rap installer (all products and materials); Road marking and delineation laborer; Setting and placing of all precast concrete products; Sign installation including supporting structure; Spraying of all epoxy, curing compound, or like material; sod layer; Air tool, power tool, and power equipment operator; Asphalt lute man; Asphalt raker man; Batch truck dumper; Bridge handrail erector; Handler (bulk or bag cement); Chain saw man; concrete puddler; concrete rubber; Concrete saw operator; Core drill operator, eye level; Hand blade operator; Hydro seeder man; Motor-driven Georgia buggy operator; Power-driven compactor or tamper operator; Power saw operator; Pumpcrete assembly man; Screed man or screw man on asphalt paver; Rebar installer; Sandblaster man; Sealer applicator for asphalt (toxic); Setting and placing prestressed or precast concrete structural members; Side rail setter (for sidewalks, side ditches, radii, and pavements); Spreader box tender (manual or power-driven); Straw blower man; Subsurface drain and culvert pipe layer; Transverse and longitudinal hand bull float man; Concrete conveyor assembly man; Horizontal boring and jacking man; Jackman and sheetman; Pipe grade man; Winch and windlass operator

GROUP 2: Cutting torch burner; Laser beam aligner; Manhole erector; Sewer pipe layer; Water line installer, temporary or permanent; Welder (electric or oxy-acetylene) in connection with waterline and sewer work, Hod Carrier (tending bricklayers); TVing and associated grouting of utility lines

GROUP 3: Air track and wagon drillman; Concrete barrier rail form setter; Dynamite and powder man; General leadman; Concrete Saw Joint Control cutting

LAB00041-006 04/01/2022

HEAVY & HIGHWAY CONSTRUCTION

JASPER & STARKE COUNTIES

	Rates	Fringes
LABORERS		
Group 1.....	\$ 28.97	23.63
Group 2.....	\$ 29.27	23.63
Group 3.....	\$ 29.97	23.63

LABORERS CLASSIFICATIONS (HEAVY AND HIGHWAY)

GROUP 1: Construction Laborer, Carpenter Tender, Fence Erector, Grade Checker, Guard Rail Erector, Continuous Steel Rod or Mat Installer, Wire Mesh Layer, Joint Man (Mortar, Mastic, and all other types), Lighting Installer (Permanent or Temporary), Lineman for Automatic Grade Maker on Paving Machines, Mortar Man, Multi-Plant Erector, Rip-rap Installer (all Products and Materials), Road Marking and Delineation Laborer, Setting and Placing of all Precast Concrete Products, Sing Installation including

supporting structure, Spraying of all Epoxy, Curing Compound, or Like Material, Flagperson, Air Tool, Power Tool Operator, Asphalt Raker Man, Batch Truck Dumper, Bridge Hand Rail Erector, Handler (bulk or bag cement), Chain Saw Man, Concrete Puddler, Concrete Rubber, Concrete Saw Operator, Core Drill Operator, Eye Level, Hand Blade Operator Hydro Seeder Man, Motor Driven Georgia Buggy Operator, Power Driven Compactor or Taper Operator, Power Saw Operator, Pump Crete Assembly Man, Sreed Man or Screw Man on Asphalt Paver, Regar Installer, Sandblaster Man, Sealer Applicator for Asphalt (toxic), Setting and Placing pre-stressed on Pre-cast Concrete Structural Members, Side Rail Setters (for Sidewalk, Side Ditches, Radii, and Pavement), Spreader Box Tender (manua or power driven), Straw Blower Man, Subsureface Drain and Culvert Pipe Layer, Concrete Conveyor, Horizontal Boring and Jackman and Sheetman, Pipe Greade Man, Winch and Windless Operator Conduit Installer, Sod Layer

GROUP 2: Cutting Torch Burner, Laser Beam Aligner, Manhole Erector, Sewer Pipe Layer, Water Line Installer, Temporary or Permanent Welders (electric or Oxy Acetylene)

GROUP 3: Air Track and Wagon Drillman, Dynamite and Powder Man, Concrete Barrier Rail Form Setter, Concrete Saw Joint Control Cutting

LAB00081-003 04/01/2022

UTILITY CONSTRUCTION

STARKE COUNTY

	Rates	Fringes
Laborers:		
GROUP 1.....	\$ 28.97	23.63
GROUP 2.....	\$ 29.27	23.63
GROUP 3.....	\$ 29.97	23.63

LABORERS CLASSIFICATIONS (UTILITY CONSTRUCTION)

GROUP 1: Construction laborer; Fence erector; Flagger; Grade checker; Guard rail erector; Wire mesh layer; Joint man (mortar, mastic and all other types); Lighting installer (permanent or temporary); Lineman for automatic grade maker on paving machines; Mortar man; Multi-plate erector; Rip-rap installer (all products and materials); Road marking and delineation laborer; Setting and placing of all precast concrete products; Sign installation including supporting structure; Spraying of all epoxy, curing compound, or like material; sod layer; Air tool, power tool, and power equipment operator; Asphalt lute man; Asphalt raker man; Batch truck dumper; Bridge handrail erector; Handler (bulk or bag cement); Chain saw man; concrete puddler; concrete rubber; Concrete saw operator; Core drill operator, eye level; Hand blade operator; Hydro seeder man; Motor-driven Georgia buggy operator; Power-driven compactor or tamper operator; Power saw operator; Pumpcrete assembly man; Screed man or screw man on asphalt paver; Rebar installer; Sandblaster man; Sealer applicator for asphalt (toxic); Setting and placing prestressed or precast concrete structural memebbers; Side rail setter (for sidewalks, side ditches, radii, and

pavements); Spreader box tender (manual or power-driven); Straw blower man; Subsurface drain and culvert pipe layer; Transverse and longitudinal hand bull float man; Concrete conveyor assembly man; Horizontal boring and jacking man; Jackman and sheetman; Pipe grade man; Winch and windlass operator

GROUP 2: Cutting torch burner; Laser beam aligner; Manhole erector; Sewer pipe layer; Water line installer, temporary or permanent; Welder (electric or oxy-acetylene) in connection with waterline and sewer work, Hod Carrier (tending bricklayers); TVing and associated grouting of utility lines

GROUP 3: Air track and wagon drillman; Concrete barrier rail form setter; Dynamite and powder man; General leadman; Concrete Saw Joint Control cutting

LAB00120-003 04/01/2022

UTILITY CONSTRUCTION

MARION & SHELBY COUNTIES

	Rates	Fringes
Laborers:		
GROUP 1.....	\$ 27.40	17.22
GROUP 2.....	\$ 27.90	17.22
GROUP 3.....	\$ 28.40	17.22

LABORERS CLASSIFICATIONS (UTILITY CONSTRUCTION)

GROUP 1: Construction laborer; Fence erector; Flagger; Grade checker; Guard rail erector; Wire mesh layer; Joint man (mortar, mastic and all other types); Lighting installer (permanent or temporary); Lineman for automatic grade maker on paving machines; Mortar man; Multi-plate erector; Rip-rap installer (all products and materials); Road marking and delineation laborer; Setting and placing of all precast concrete products; Sign installation including supporting structure; Spraying of all epoxy, curing compound, or like material; sod layer; Air tool, power tool, and power equipment operator; Asphalt lute man; Asphalt raker man; Batch truck dumper; Bridge handrail erector; Handler (bulk or bag cement); Chain saw man; concrete puddler; concrete rubber; Concrete saw operator; Core drill operator, eye level; Hand blade operator; Hydro seeder man; Motor-driven Georgia buggy operator; Power-driven compactor or tamper operator; Power saw operator; Pumpcrete assembly man; Screed man or screw man on asphalt paver; Rebar installer; Sandblaster man; Sealer applicator for asphalt (toxic); Setting and placing prestressed or precast concrete structural members; Side rail setter (for sidewalks, side ditches, radii, and pavements); Spreader box tender (manual or power-driven); Straw blower man; Subsurface drain and culvert pipe layer; Transverse and longitudinal hand bull float man; Concrete conveyor assembly man; Horizontal boring and jacking man; Jackman and sheetman; Pipe grade man; Winch and windlass operator

GROUP 2: Cutting torch burner; Laser beam aligner; Manhole erector; Sewer pipe layer; Water line installer, temporary

or permanent; Welder (electric or oxy-acetylene) in connection with waterline and sewer work, Hod Carrier (tending bricklayers); TVing and associated grouting of utility lines

GROUP 3: Air track and wagon drillman; Concrete barrier rail form setter; Dynamite and powder man; General leadman; Concrete Saw Joint Control cutting

LAB00204-003 04/01/2022

UTILITY CONSTRUCTION

CLAY, FOUNTAIN, GREENE, HENDRICKS, OWEN, PARKE, PUTNAM, SULLIVAN, VERMILLION, VIGO, & WARREN COUNTIES

	Rates	Fringes
Laborers:		
GROUP 1.....	\$ 27.40	17.22
GROUP 2.....	\$ 27.90	17.22
GROUP 3.....	\$ 28.40	17.22

LABORERS CLASSIFICATIONS (UTILITY CONSTRUCTION)

GROUP 1: Construction laborer; Fence erector; Flagger; Grade checker; Guard rail erector; Wire mesh layer; Joint man (mortar, mastic and all other types); Lighting installer (permanent or temporary); Lineman for automatic grade maker on paving machines; Mortar man; Multi-plate erector; Rip-rap installer (all products and materials); Road marking and delineation laborer; Setting and placing of all precast concrete products; Sign installation including supporting structure; Spraying of all epoxy, curing compound, or like material; sod layer; Air tool, power tool, and power equipment operator; Asphalt lute man; Asphalt raker man; Batch truck dumper; Bridge handrail erector; Handler (bulk or bag cement); Chain saw man; concrete puddler; concrete rubber; Concrete saw operator; Core drill operator, eye level; Hand blade operator; Hydro seeder man; Motor-driven Georgia buggy operator; Power-driven compactor or tamper operator; Power saw operator; Pumpcrete assembly man; Screed man or screw man on asphalt paver; Rebar installer; Sandblaster man; Sealer applicator for asphalt (toxic); Setting and placing prestressed or precast concrete structural members; Side rail setter (for sidewalks, side ditches, radii, and pavements); Spreader box tender (manual or power-driven); Straw blower man; Subsurface drain and culvert pipe layer; Transverse and longitudinal hand bull float man; Concrete conveyor assembly man; Horizontal boring and jacking man; Jackman and sheetman; Pipe grade man; Winch and windlass operator

GROUP 2: Cutting torch burner; Laser beam aligner; Manhole erector; Sewer pipe layer; Water line installer, temporary or permanent; Welder (electric or oxy-acetylene) in connection with waterline and sewer work, Hod Carrier (tending bricklayers); TVing and associated grouting of utility lines

GROUP 3: Air track and wagon drillman; Concrete barrier rail form setter; Dynamite and powder man; General leadman;

Concrete Saw Joint Control cutting

LAB00213-003 04/01/2022

UTILITY CONSTRUCTION

ADAMS, ALLEN, DEKALB, HUNTINGTON, NOBLE, STEUBEN, WABASH,
WELLS, & WHITLEY COUNTIES

	Rates	Fringes
Laborers:		
GROUP 1.....	\$ 27.40	17.22
GROUP 2.....	\$ 27.90	17.22
GROUP 3.....	\$ 28.40	17.22

LABORERS CLASSIFICATIONS (UTILITY CONSTRUCTION)

GROUP 1: Construction laborer; Fence erector; Flagger; Grade checker; Guard rail erector; Wire mesh layer; Joint man (mortar, mastic and all other types); Lighting installer (permanent or temporary); Lineman for automatic grade maker on paving machines; Mortar man; Multi-plate erector; Rip-rap installer (all products and materials); Road marking and delineation laborer; Setting and placing of all precast concrete products; Sign installation including supporting structure; Spraying of all epoxy, curing compound, or like material; sod layer; Air tool, power tool, and power equipment operator; Asphalt lute man; Asphalt raker man; Batch truck dumper; Bridge handrail erector; Handler (bulk or bag cement); Chain saw man; concrete puddler; concrete rubber; Concrete saw operator; Core drill operator, eye level; Hand blade operator; Hydro seeder man; Motor-driven Georgia buggy operator; Power-driven compactor or tamper operator; Power saw operator; Pumpcrete assembly man; Screed man or screw man on asphalt paver; Rebar installer; Sandblaster man; Sealer applicator for asphalt (toxic); Setting and placing prestressed or precast concrete structural members; Side rail setter (for sidewalks, side ditches, radii, and pavements); Spreader box tender (manual or power-driven); Straw blower man; Subsurface drain and culvert pipe layer; Transverse and longitudinal hand bull float man; Concrete conveyor assembly man; Horizontal boring and jacking man; Jackman and sheetman; Pipe grade man; Winch and windlass operator

GROUP 2: Cutting torch burner; Laser beam aligner; Manhole erector; Sewer pipe layer; Water line installer, temporary or permanent; Welder (electric or oxy-acetylene) in connection with waterline and sewer work, Hod Carrier (tending bricklayers); TVing and associated grouting of utility lines

GROUP 3: Air track and wagon drillman; Concrete barrier rail form setter; Dynamite and powder man; General leadman; Concrete Saw Joint Control cutting

LAB00274-005 04/01/2022

UTILITY CONSTRUCTION

BENTON, BOONE, CARROLL, CASS, CLINTON, FULTON, HOWARD, MIAMI,
MONTGOMERY, PULASKI, TIPPECANOE, TIPTON, and WHITE COUNTIES

	Rates	Fringes
Laborers:		
GROUP 1.....	\$ 27.40	17.22
GROUP 2.....	\$ 27.90	17.22
GROUP 3.....	\$ 28.40	17.22

LABORERS CLASSIFICATIONS (UTILITY CONSTRUCTION)

GROUP 1: Construction laborer; Fence erector; Flagger; Grade checker; Guard rail erector; Wire mesh layer; Joint man (mortar, mastic and all other types); Lighting installer (permanent or temporary); Lineman for automatic grade maker on paving machines; Mortar man; Multi-plate erector; Rip-rap installer (all products and materials); Road marking and delineation laborer; Setting and placing of all precast concrete products; Sign installation including supporting structure; Spraying of all epoxy, curing compound, or like material; sod layer; Air tool, power tool, and power equipment operator; Asphalt lute man; Asphalt raker man; Batch truck dumper; Bridge handrail erector; Handler (bulk or bag cement); Chain saw man; concrete puddler; concrete rubber; Concrete saw operator; Core drill operator, eye level; Hand blade operator; Hydro seeder man; Motor-driven Georgia buggy operator; Power-driven compactor or tamper operator; Power saw operator; Pumpcrete assembly man; Screed man or screw man on asphalt paver; Rebar installer; Sandblaster man; Sealer applicator for asphalt (toxic); Setting and placing prestressed or precast concrete structural members; Side rail setter (for sidewalks, side ditches, radii, and pavements); Spreader box tender (manual or power-driven); Straw blower man; Subsurface drain and culvert pipe layer; Transverse and longitudinal hand bull float man; Concrete conveyor assembly man; Horizontal boring and jacking man; Jackman and sheetman; Pipe grade man; Winch and windlass operator

GROUP 2: Cutting torch burner; Laser beam aligner; Manhole erector; Sewer pipe layer; Water line installer, temporary or permanent; Welder (electric or oxy-acetylene) in connection with waterline and sewer work, Hod Carrier (tending bricklayers); TVing and associated grouting of utility lines

GROUP 3: Air track and wagon drillman; Concrete barrier rail form setter; Dynamite and powder man; General leadman; Concrete Saw Joint Control cutting

LAB00561-015 04/01/2022

UTILITY CONSTRUCTION

DAVIESS, DUBOIS, GIBSON, KNOX, PIKE, POSEY, SPENCER,
VANDERBURGH, & WARRICK COUNTIES

	Rates	Fringes
Laborers:		

GROUP 1.....	\$ 27.40	17.22
GROUP 2.....	\$ 27.90	17.22
GROUP 3.....	\$ 28.40	17.22

LABORERS CLASSIFICATIONS (UTILITY CONSTRUCTION)

GROUP 1: Construction laborer; Fence erector; Flagger; Grade checker; Guard rail erector; Wire mesh layer; Joint man (mortar, mastic and all other types); Lighting installer (permanent or temporary); Lineman for automatic grade maker on paving machines; Mortar man; Multi-plate erector; Rip-rap installer (all products and materials); Road marking and delineation laborer; Setting and placing of all precast concrete products; Sign installation including supporting structure; Spraying of all epoxy, curing compound, or like material; sod layer; Air tool, power tool, and power equipment operator; Asphalt lute man; Asphalt raker man; Batch truck dumper; Bridge handrail erector; Handler (bulk or bag cement); Chain saw man; concrete puddler; concrete rubber; Concrete saw operator; Core drill operator, eye level; Hand blade operator; Hydro seeder man; Motor-driven Georgia buggy operator; Power-driven compactor or tamper operator; Power saw operator; Pumpcrete assembly man; Screed man or screw man on asphalt paver; Rebar installer; Sandblaster man; Sealer applicator for asphalt (toxic); Setting and placing prestressed or precast concrete structural members; Side rail setter (for sidewalks, side ditches, radii, and pavements); Spreader box tender (manual or power-driven); Straw blower man; Subsurface drain and culvert pipe layer; Transverse and longitudinal hand bull float man; Concrete conveyor assembly man; Horizontal boring and jacking man; Jackman and sheetman; Pipe grade man; Winch and windlass operator

GROUP 2: Cutting torch burner; Laser beam aligner; Manhole erector; Sewer pipe layer; Water line installer, temporary or permanent; Welder (electric or oxy-acetylene) in connection with waterline and sewer work, Hod Carrier (tending bricklayers); TVing and associated grouting of utility lines

GROUP 3: Air track and wagon drillman; Concrete barrier rail form setter; Dynamite and powder man; General leadman; Concrete Saw Joint Control cutting

LAB00645-005 04/01/2022

UTILITY CONSTRUCTION

ELKHART COUNTY

	Rates	Fringes
Laborers:		
GROUP 1.....	\$ 27.40	17.22
GROUP 2.....	\$ 27.90	17.22
GROUP 3.....	\$ 28.40	17.22

LABORERS CLASSIFICATIONS (UTILITY CONSTRUCTION)

GROUP 1: Construction laborer; Fence erector; Flagger; Grade checker; Guard rail erector; Wire mesh layer; Joint man (mortar, mastic and all other types); Lighting installer

(permanent or temporary); Lineman for automatic grade maker on paving machines; Mortar man; Multi-plate erector; Rip-rap installer (all products and materials); Road marking and delineation laborer; Setting and placing of all precast concrete products; Sign installation including supporting structure; Spraying of all epoxy, curing compound, or like material; sod layer; Air tool, power tool, and power equipment operator; Asphalt lute man; Asphalt raker man; Batch truck dumper; Bridge handrail erector; Handler (bulk or bag cement); Chain saw man; concrete puddler; concrete rubber; Concrete saw operator; Core drill operator, eye level; Hand blade operator; Hydro seeder man; Motor-driven Georgia buggy operator; Power-driven compactor or tamper operator; Power saw operator; Pumpcrete assembly man; Screed man or screw man on asphalt paver; Rebar installer; Sandblaster man; Sealer applicator for asphalt (toxic); Setting and placing prestressed or precast concrete structural members; Side rail setter (for sidewalks, side ditches, radii, and pavements); Spreader box tender (manual or power-driven); Straw blower man; Subsurface drain and culvert pipe layer; Transverse and longitudinal hand bull float man; Concrete conveyor assembly man; Horizontal boring and jacking man; Jackman and sheetman; Pipe grade man; Winch and windlass operator

GROUP 2: Cutting torch burner; Laser beam aligner; Manhole erector; Sewer pipe layer; Water line installer, temporary or permanent; Welder (electric or oxy-acetylene) in connection with waterline and sewer work, Hod Carrier (tending bricklayers); Tying and associated grouting of utility lines

GROUP 3: Air track and wagon drillman; Concrete barrier rail form setter; Dynamite and powder man; General leadman; Concrete Saw Joint Control cutting

LAB00645-006 04/01/2022

UTILITY CONSTRUCTION

KOSCIUSKO, LAGRANGE, & MARSHALL COUNTIES

	Rates	Fringes
Laborers:		
GROUP 1.....	\$ 27.40	17.22
GROUP 2.....	\$ 27.90	17.22
GROUP 3.....	\$ 28.40	17.22

LABORERS CLASSIFICATIONS (UTILITY CONSTRUCTION)

GROUP 1: Construction laborer; Fence erector; Flagger; Grade checker; Guard rail erector; Wire mesh layer; Joint man (mortar, mastic and all other types); Lighting installer (permanent or temporary); Lineman for automatic grade maker on paving machines; Mortar man; Multi-plate erector; Rip-rap installer (all products and materials); Road marking and delineation laborer; Setting and placing of all precast concrete products; Sign installation including supporting structure; Spraying of all epoxy, curing compound, or like material; sod layer; Air tool, power tool, and power equipment operator; Asphalt lute man; Asphalt raker man; Batch truck dumper; Bridge handrail

erector; Handler (bulk or bag cement); Chain saw man; concrete puddler; concrete rubber; Concrete saw operator; Core drill operator, eye level; Hand blade operator; Hydro seeder man; Motor-driven Georgia buggy operator; Power-driven compactor or tamper operator; Power saw operator; Pumpcrete assembly man; Screed man or screw man on asphalt paver; Rebar installer; Sandblaster man; Sealer applicator for asphalt (toxic); Setting and placing prestressed or precast concrete structural members; Side rail setter (for sidewalks, side ditches, radii, and pavements); Spreader box tender (manual or power-driven); Straw blower man; Subsurface drain and culvert pipe layer; Transverse and longitudinal hand bull float man; Concrete conveyor assembly man; Horizontal boring and jacking man; Jackman and sheetman; Pipe grade man; Winch and windlass operator

GROUP 2: Cutting torch burner; Laser beam aligner; Manhole erector; Sewer pipe layer; Water line installer, temporary or permanent; Welder (electric or oxy-acetylene) in connection with waterline and sewer work, Hod Carrier (tending bricklayers); Tying and associated grouting of utility lines

GROUP 3: Air track and wagon drillman; Concrete barrier rail form setter; Dynamite and powder man; General leadman; Concrete Saw Joint Control cutting

LAB00741-007 04/01/2022

UTILITY CONSTRUCTION

BARTHOLOMEW, BROWN, DEARBORN, DECATUR, FRANKLIN, JACKSON, JENNINGS, JOHNSON, LAWRENCE, MARTIN, MONROE, MORGAN, OHIO, ORANGE & RIPLEY COUNTIES

	Rates	Fringes
Laborers:		
GROUP 1.....	\$ 27.40	17.22
GROUP 2.....	\$ 27.90	17.22
GROUP 3.....	\$ 28.40	17.22

LABORERS CLASSIFICATIONS (UTILITY CONSTRUCTION)

GROUP 1: Construction laborer; Fence erector; Flagger; Grade checker; Guard rail erector; Wire mesh layer; Joint man (mortar, mastic and all other types); Lighting installer (permanent or temporary); Lineman for automatic grade maker on paving machines; Mortar man; Multi-plate erector; Rip-rap installer (all products and materials); Road marking and delineation laborer; Setting and placing of all precast concrete products; Sign installation including supporting structure; Spraying of all epoxy, curing compound, or like material; sod layer; Air tool, power tool, and power equipment operator; Asphalt lute man; Asphalt raker man; Batch truck dumper; Bridge handrail erector; Handler (bulk or bag cement); Chain saw man; concrete puddler; concrete rubber; Concrete saw operator; Core drill operator, eye level; Hand blade operator; Hydro seeder man; Motor-driven Georgia buggy operator; Power-driven compactor or tamper operator; Power saw operator; Pumpcrete assembly man; Screed man or screw man

on asphalt paver; Rebar installer; Sandblaster man; Sealer applicator for asphalt (toxic); Setting and placing prestressed or precast concrete structural members; Side rail setter (for sidewalks, side ditches, radii, and pavements); Spreader box tender (manual or power-driven); Straw blower man; Subsurface drain and culvert pipe layer; Transverse and longitudinal hand bull float man; Concrete conveyor assembly man; Horizontal boring and jacking man; Jackman and sheetman; Pipe grade man; Winch and windlass operator

GROUP 2: Cutting torch burner; Laser beam aligner; Manhole erector; Sewer pipe layer; Water line installer, temporary or permanent; Welder (electric or oxy-acetylene) in connection with waterline and sewer work, Hod Carrier (tending bricklayers); Tying and associated grouting of utility lines

GROUP 3: Air track and wagon drillman; Concrete barrier rail form setter; Dynamite and powder man; General leadman; Concrete Saw Joint Control cutting

LAB00795-004 04/01/2022

UTILITY CONSTRUCTION

CLARK, CRAWFORD, FLOYD, HARRISON, JEFFERSON, PERRY, SCOTT, SWITZERLAND, & WASHINGTON COUNTIES

	Rates	Fringes
Laborers:		
GROUP 1.....	\$ 27.40	17.22
GROUP 2.....	\$ 27.90	17.22
GROUP 3.....	\$ 28.40	17.22

LABORERS CLASSIFICATIONS (UTILITY CONSTRUCTION)

GROUP 1: Construction laborer; Fence erector; Flagger; Grade checker; Guard rail erector; Wire mesh layer; Joint man (mortar, mastic and all other types); Lighting installer (permanent or temporary); Lineman for automatic grade maker on paving machines; Mortar man; Multi-plate erector; Rip-rap installer (all products and materials); Road marking and delineation laborer; Setting and placing of all precast concrete products; Sign installation including supporting structure; Spraying of all epoxy, curing compound, or like material; sod layer; Air tool, power tool, and power equipment operator; Asphalt lute man; Asphalt raker man; Batch truck dumper; Bridge handrail erector; Handler (bulk or bag cement); Chain saw man; concrete puddler; concrete rubber; Concrete saw operator; Core drill operator, eye level; Hand blade operator; Hydro seeder man; Motor-driven Georgia buggy operator; Power-driven compactor or tamper operator; Power saw operator; Pumpcrete assembly man; Screed man or screw man on asphalt paver; Rebar installer; Sandblaster man; Sealer applicator for asphalt (toxic); Setting and placing prestressed or precast concrete structural members; Side rail setter (for sidewalks, side ditches, radii, and pavements); Spreader box tender (manual or power-driven); Straw blower man; Subsurface drain and culvert pipe layer; Transverse and longitudinal hand bull float man; Concrete

conveyor assembly man; Horizontal boring and jacking man; Jackman and sheetman; Pipe grade man; Winch and windlass operator

GROUP 2: Cutting torch burner; Laser beam aligner; Manhole erector; Sewer pipe layer; Water line installer, temporary or permanent; Welder (electric or oxy-acetylene) in connection with waterline and sewer work, Hod Carrier (tending bricklayers); TVing and associated grouting of utility lines

GROUP 3: Air track and wagon drillman; Concrete barrier rail form setter; Dynamite and powder man; General leadman; Concrete Saw Joint Control cutting

LAB00999-001 04/01/2020

HEAVY AND HIGHWAY CONSTRUCTION

ALL COUNTIES EXCEPT: Jasper, Newton, & Starke

	Rates	Fringes
Laborers:		
GROUP 1.....	\$ 25.10	16.17
GROUP 2.....	\$ 25.40	16.17
GROUP 3.....	\$ 26.10	16.17

LABORERS CLASSIFICATIONS

GROUP 1: Building and Construction Laborers; Scaffold Builders (other than for Plasterers); Mechanic Tenders; Window Washers and cleaners; Waterboys and Toolhousemen; Roofers Tenders; Railroad Workers; Masonry Wall Washers (interior and exterior); Cement Finisher Tenders; Carpenter Tenders; All Portable Water pumps with discharge up to (3) inches; Plaster Tenders; Mason Tenders; Flag & Signal Person.

GROUP 2: Waterproofing; Handling of Creosot Lumber or like treated material (excluding railroad material); Asphalt Rakers and Lutemen; Kettlemen; Air Tool Operators and all Pneumatic Tool Operators; Air and Electric Vibrators and Chipping Hammer Operators; Earth Compactors Jackmen and Sheetmen working Ditches deeper than (6) ft.in depth; Laborers working in ditches (6) ft.in depth or deeper; Assembly of Unicrete Pump; Tile Layers (sewer or field) and Sewer Pipe Layer (metallic or non-metallic); Motor driven Wheelbarrows and Concrete Buggies; Hyster Operators; Pump Crete Assemblers; Core Drill Operators; Cement, Lime or Silica Clay Handlers (bulk or bag); Handling of Toxic Materials damaging to clothing; Pneumatic Spikers; Deck Engine and Winch Operators; Water Main and Cable Ducking (metallic and non-metallic); Screed Man or Screw Operator on Asphalt Paver; Chain and Demolition Saw Operators; Concrete Conveyor Assemblers.

GROUP 3: Water Blast Machine Operator; Mortar Mixers; Welders (Acetylene or electric); Cutting Torch or Burner; Cement Nozzle. Laborers; Cement Gun Operator; Scaffold Builders when Working for Plasterers. Dynamite Men; Drillers - Air Track or Wagon Drilling for explosives Hazardous and Toxic material handler, asbestos removal or handler.

LAB01112-003 04/01/2022

UTILITY CONSTRUCTION

BLACKFORD, DELAWARE, FAYETTE, GRANT, HAMILTON, HANCOCK, HENRY,
JAY, MADISON, RANDOLPH, RUSH, UNION & WAYNE COUNTIES

	Rates	Fringes
Laborers:		
GROUP 1.....	\$ 27.40	17.22
GROUP 2.....	\$ 27.90	17.22
GROUP 3.....	\$ 28.40	17.22

LABORERS CLASSIFICATIONS (UTILITY CONSTRUCTION)

GROUP 1: Construction laborer; Fence erector; Flagger; Grade checker; Guard rail erector; Wire mesh layer; Joint man (mortar, mastic and all other types); Lighting installer (permanent or temporary); Lineman for automatic grade maker on paving machines; Mortar man; Multi-plate erector; Rip-rap installer (all products and materials); Road marking and delineation laborer; Setting and placing of all precast concrete products; Sign installation including supporting structure; Spraying of all epoxy, curing compound, or like material; sod layer; Air tool, power tool, and power equipment operator; Asphalt lute man; Asphalt raker man; Batch truck dumper; Bridge handrail erector; Handler (bulk or bag cement); Chain saw man; concrete puddler; concrete rubber; Concrete saw operator; Core drill operator, eye level; Hand blade operator; Hydro seeder man; Motor-driven Georgia buggy operator; Power-driven compactor or tamper operator; Power saw operator; Pumpcrete assembly man; Screed man or screw man on asphalt paver; Rebar installer; Sandblaster man; Sealer applicator for asphalt (toxic); Setting and placing prestressed or precast concrete structural members; Side rail setter (for sidewalks, side ditches, radii, and pavements); Spreader box tender (manual or power-driven); Straw blower man; Subsurface drain and culvert pipe layer; Transverse and longitudinal hand bull float man; Concrete conveyor assembly man; Horizontal boring and jacking man; Jackman and sheetman; Pipe grade man; Winch and windlass operator

GROUP 2: Cutting torch burner; Laser beam aligner; Manhole erector; Sewer pipe layer; Water line installer, temporary or permanent; Welder (electric or oxy-acetylene) in connection with waterline and sewer work, Hod Carrier (tending bricklayers); TVing and associated grouting of utility lines

GROUP 3: Air track and wagon drillman; Concrete barrier rail form setter; Dynamite and powder man; General leadman; Concrete Saw Joint Control cutting

PAIN0012-006 05/01/2020

COMMERCIAL AND INDUSTRIAL

DEARBORN, OHIO, RIPLEY AND SWITZERLAND COUNTIES:

	Rates	Fringes
--	-------	---------

PAINTER

Bridges, Lead Abatement.....	\$ 26.30	11.35
Brush & Roller,		
Paperhanger, Drywall Taping..	\$ 25.30	11.35
Sandblasting, Waterblasting..	\$ 26.05	11.35
Spray.....	\$ 25.80	11.35

 * PAIN0027-005 06/01/2022

NEWTON COUNTY, West of Highway #41

	Rates	Fringes
--	-------	---------

GLAZIER.....	\$ 48.75	41.32
--------------	----------	-------

 PAIN0047-005 06/01/2022

BARTHOLOMEW, BOONE, BROWN, DECATUR, HAMILTON, HANCOCK,
 HENDRICKS, JACKSON, JENNINGS, JOHNSON, LAWRENCE, MARION,
 MARTIN, MONROE, MORGAN, ORANGE, AND SHELBY COUNTIES

	Rates	Fringes
--	-------	---------

PAINTER

BRIDGE WORK		
Concrete/Masonry Bridges...	\$ 26.44	13.30
Steel Bridges.....	\$ 30.50	14.50
NON-BRIDGE WORK		
Brush, Roller.....	\$ 28.10	15.81
Spray and Sand-Blasting....	\$ 29.10	15.81

 PAIN0080-001 06/01/2022

BENTON, CARROLL, CASS, CLINTON, FOUNTAIN, MONTGOMERY TIPPECANOE
 AND WARREN COUNTIES

	Rates	Fringes
--	-------	---------

PAINTER

Brush and Roller.....	\$ 27.13	17.43
Spray and Sandblasting.....	\$ 27.18	17.43

 PAIN0091-007 06/01/2022

ELKHART, FULTON, KOSCIUSKO AND MARSHALL COUNTIES

	Rates	Fringes
--	-------	---------

PAINTER

Brush & Roller, Drywall		
Taping & Finishing,		
Vinyl/Paper Hanging.....	\$ 28.75	17.00
Spray.....	\$ 29.25	17.00

 PAIN0118-005 06/01/2022

CLARK, CRAWFORD, FLOYD, HARRISON JEFFERSON, SCOTT AND
 WASHINGTON COUNTIES

	Rates	Fringes
--	-------	---------

Painters:

Heavy Construction		
Brush, Roller &		
Paperhanger.....	\$ 22.20	14.07
Spray, Sandblast &		
Waterblast.....	\$ 23.45	13.19
Highway Construction &		
Railroad Bridges		
Brush, Roller &		
Paperhanger.....	\$ 29.81	14.58
Spray, Sandblast &		
Waterblast.....	\$ 30.81	14.58

PAIN0156-001 04/01/2020

DAVISS, DUBOIS, GIBZSON, KNOX, PERRY, PIKE, POSSEY, SPENCER,
VANDERBURGH, AND WARRICK COUNTIES

Rates Fringes

Painters:

BRUSH & ROLLER OF MASTICS,		
CREOSOTES, KEWINCH KOATE,		
& COAL TAR EPOXY.....	\$ 28.60	17.53
BRUSH & ROLLER.....	\$ 27.60	17.53
DRYWALL FINISHERS.....	\$ 27.85	17.53
SPRAY of MASTICS		
CREOSOTES, KWINCH KOATE,		
COAL TAR EPOXY.....	\$ 29.60	17.53
SPRAY, SANDBLAST, POWER		
TOOLS, WATERBLAST & STEAM		
CLEANING.....	\$ 28.60	17.53

FOOTNOTE A:

All Structures over 40? \$0.75/ hour above base wage
All Structures over 75? \$1.50/ hour above base wage
All Structures over 100? \$2.50/ hour above base wage

PAIN0197-001 06/01/2022

CLAY, GREENE, OWEN, PARKE, PUTNAM, SULLIVAN, VERMILLION AND
VIGO COUNTIES:

Rates Fringes

Painters:

Brush & Roller.....	\$ 28.50	13.70
Sandblasting.....	\$ 30.50	13.70
Spray & Pot Man.....	\$ 29.00	13.70

FOOTNOTE A: \$1.00 premium for work on structures over 40 ft.
above floor/ground level
\$2.00 premium for work on structures over 100 ft
above floor/ground level

PAIN0387-004 11/01/2021

DEARBORN, FRANKLIN, OHIO, RIPLEY, and SWITZERLAND COUNTIES

Rates Fringes

GLAZIER.....\$ 27.93 16.82

PAIN0460-004 06/01/2022

JASPER, NEWTON, PULASKI, STARKE AND WHITE COUNTIES

Rates Fringes

Painters:

Brush & Roller
Building.....\$ 37.10 27.68
Brush and Roller
Heavy and Highway.....\$ 37.10 27.68
Drywall Taping & Finishing..\$ 37.98 27.68

PAIN0469-002 06/01/2022

ADAMS, ALLEN, DEKALB, GRANT, HUNTINGTON, LAGRANGE, NOBLE,
STEUBEN, WABASH, WELLS, and WHITLEY COUNTIES

Rates Fringes

Painters:

Brush, Roller,
Paperhanger, & Drywall
Finishing.....\$ 23.77 14.74
Lead Abatement.....\$ 27.66 14.30
Spray & Sandblast Pot
Tenders and Ground
Personnel.....\$ 24.86 14.30
Spray, Sandblast, Power
Tools, Waterblast, & Steam
Cleaning.....\$ 24.86 14.30

PAIN0669-001 05/01/2022

BLACKFORD, DELAWARE, FAYETTE, FRANKLIN, HENRY, HOWARD, JAY,
MADISON, MIAMI, RANDOLPH, RUSH, TIPTON, UNION and WAYNE COUNTIES

Rates Fringes

Painters:

Brush; Roller;
Paperhanging; Drywall
Finishers.....\$ 22.70 15.29
Spray/Waterblasting;
Sandblasting.....\$ 23.70 15.29

PAIN1165-014 07/01/2021

CLARK, CRAWFORD, DAVIESS, DUBOIS, FLOYD, GIBSON, HARRISION,
JEFFERSON, KNOX, MARTIN, ORANGE, PERRY, PIKE, POSEY, SCOTT,
SPENCER, VANDERBURGH, WARRICK AND WASHINGTON

Rates Fringes

GLAZIER.....\$ 30.45 17.25

PAIN1165-017 07/01/2021

ADAMS, ALLEN, BLACKFORD, DE KALB, GRANT, HUNTINGTON, JAY,

NOBLE, STEUBEN, WABASH, WELLS AND WHITLEY COUNTIES

	Rates	Fringes
GLAZIER.....	\$ 27.42	15.55

PAIN1165-018 07/01/2021		

JASPER and NEWTON (East of Highway #41) COUNTIES

	Rates	Fringes
GLAZIER.....	\$ 38.18	25.53

PAIN1165-019 07/01/2021		

ELKHART, FULTON, KOSCIUSKO, LAGRANGE, MARSHALL, PULASKI, and STARKE COUNTY

	Rates	Fringes
GLAZIER.....	\$ 29.81	17.68

PAIN1165-022 01/01/2021		

BARTHOLOMEW, BENTON, BOONE, BROWN, CARROLL, CASS, CLAY, CLINTON, DECATUR, DELEWARE, FAYETTE, FOUNTAIN, GREENE, HAMILTON, HANCOCK, HENDRICKS, HENRY, HOWARD, JACKSON, JENNINGS, JOHNSON, LAWRENCE, MADISON, MARION, MIAMI, MONROE, MONTGOMERY, MORGAN, OWEN, PARKE, PUTNAM, RANDOLPH, RUSH, SHELBY, SULLIVAN, TIPPECANOE, TIPTON, UNION, VIGO, VERMILLION, WARREN, WAYNE, and WHITE COUNTIES

	Rates	Fringes
GLAZIER.....	\$ 29.61	17.42

PLAS0075-001 06/01/2017		

CLAY, OWEN, PARKE, PUTNAM, VERMILLION AND VIGO COUNTIES:

	Rates	Fringes
CEMENT MASON/CONCRETE FINISHER...	\$ 25.75	13.50

PLAS0075-002 06/01/2017		

GREENE and SULLIVAN COUNTIES

	Rates	Fringes
CEMENT MASON/CONCRETE FINISHER...	\$ 28.50	13.50

PLAS0101-001 06/01/2018		

ELKHART, FULTON AND MARSHALL COUNTIES; PULASKI COUNTY (SOUTHERN 1/2):

	Rates	Fringes
CEMENT MASON/CONCRETE FINISHER...	\$ 31.50	14.30

 PLAS0101-008 06/01/2014

ADAMS, ALLEN, DEKALB, HUNTINGTON, KOSCIUSKO, LAGRANGE, NOBLE,
 STEUBEN, WELLS AND WHITLEY COUNTIES

	Rates	Fringes
CEMENT MASON/CONCRETE FINISHER...	\$ 23.38	11.94
PLASTERER.....	\$ 25.69	11.75

PLAS0438-003 06/01/2018

PULASKI (NOTHERN 2/3), JASPER (N. EASTERN PORTION OF WEST TO
 BUT NOT INCLUDING WHEATFIELD), ALL OF STARKE COUNTY

	Rates	Fringes
CEMENT MASON/CONCRETE FINISHER...	\$ 36.01	25.40

PLAS0692-002 06/01/2016

AREA #46

BARTHOLOMEW, BOONE, BROWN, CLARK, CLAY, CRAWFORD, DAVIESS,
 DUBOIS, GIBSON, HENDRICKS, JACKSON, JEFFERSON, JENNINGS,
 JOHNSON, KNOX, LAWRENCE, MARION, MARTIN, MONROE, MORGAN,
 ORANGE, OWEN, PARKE, PERRY, PIKE, POSEY, PUTNAM, SCOTT, SHELBY,
 SPENCER, VANDERBURGH, VERMILLION, VIGO and WARRICK COUNTIES

	Rates	Fringes
PLASTERER.....	\$ 25.04	13.23

PLAS0692-008 05/01/2017

BARTHOLOMEW, BROWN, CLARK, DEARBORN, FLOYD, JACKSON, JEFFERSON,
 JENNINGS, LAWRENCE, OHIO, ORANGE, RIPLEY, SCOTT, SHELBY,
 SWITZERLAND, and WASHINGTON Counties

	Rates	Fringes
CEMENT MASON/CONCRETE FINISHER AREA #821.....	\$ 24.18	13.49

PLAS0692-009 04/01/2020

AREA #83

BLACKFORD, DELAWARE, GRANT, HAMILTON (Northern Part), HANCOCK
 (Northern Part), JAY, MADISON, TIPTON, and WABASH COUNTIES

	Rates	Fringes
CEMENT MASON/CONCRETE FINISHER...	\$ 26.00	15.54
PLASTERER.....	\$ 25.49	11.95

PLAS0692-011 04/01/2020

AREA #83

DECATUR, FAYETTE, FRANKLIN, HENRY, RANDOLPH, RUSH, UNION and WAYNE COUNTIES

	Rates	Fringes
CEMENT MASON/CONCRETE FINISHER...	\$ 26.00	15.54
PLASTERER.....	\$ 25.49	11.95

PLAS0692-015 06/01/2016

AREA #121

BENTON, CARROLL, CASS, CLINTON, FOUNTAIN, HOWARD, MIAMI, MONTGOMERY, TIPPECANOE, WARREN, WHITE and VERMILLION (Northern Part) COUNTIES

	Rates	Fringes
CEMENT MASON/CONCRETE FINISHER...	\$ 26.10	17.30
PLASTERER.....	\$ 27.71	16.40

PLAS0692-018 06/01/2017

AREA #165

NEWTON COUNTIES

	Rates	Fringes
CEMENT MASON/CONCRETE FINISHER...	\$ 38.88	23.73

PLAS0692-022 06/01/2017

Southward on Rt. No. 49 to the JASPER, BENTON and WHITE County lines, including the City Limits of Wheatfield, Rensselaer and Remington, Indiana. To the West, the boundary of NEWTON County

	Rates	Fringes
CEMENT MASON/CONCRETE FINISHER		
AREA #406.....	\$ 33.35	19.09

PLAS0692-023 06/01/2018

AREA #532

BOONE, HAMILTON (SOUTH HALF OF COUNTY NORTH TO NEW ROUTE INDIANA #32 INCLUDING NOBLESVILLE); HANCOCK COUNTY (SOUTHERN AND WESTERN PART OF HANCOCK COUNTY, NORTH TO BUT NOT INCLUDING FORTVILLE); HENDRICKS, JOHNSON, MARION and MORGAN COUNTIES

	Rates	Fringes
CEMENT MASON/CONCRETE FINISHER...	\$ 26.45	18.11
Slip Form Shift Work.....	\$ 27.45	18.11
Swinging/Suspended Scaffold.	\$ 26.70	18.11

PLAS0692-027 04/01/2020

AREA #566

CRAWFORD, DAVIESS, DUBOIS, GIBSON, HARRISON, KNOX, MARTIN,
PERRY, PIKE, POSEY, SPENCER, VANDERBURGH and WARRICK COUNTIES

	Rates	Fringes
CEMENT MASON/CONCRETE FINISHER...	\$ 28.30	18.31

PLUM0136-003 04/01/2022

BROWN, DAVIESS, DUBOIS, GIBSON, JACKSON, LAWRENCE, MARTIN,
MONROE, ORANGE, OWEN, PERRY, PIKE, POSEY, SPENCER, VANDERBURGH,
WARRICK, and WASHINGTON Counties

	Rates	Fringes
Plumbers and Pipefitters.....	\$ 40.07	19.11

PLUM0157-002 07/01/2022

BENTON, CARROLL, CLINTON, FOUNTAIN, MONTGOMERY, TIPPECANOE,
WARREN AND WHITE COUNTIES:

	Rates	Fringes
Plumbers and Pipefitters.....	\$ 39.73	20.85

PLUM0166-001 06/01/2022

ADAMS, ALLEN, BLACKFORD, DE KALB, GRANT, HUNTINGTON, NOBLE,
STEUBEN, WABASH, WELLS, and WHITLEY COUNTIES

	Rates	Fringes
Plumber and Steamfitter.....	\$ 39.26	17.81

PLUM0166-002 06/01/2022

ELKHART, KOSCIUSKO, and LAGRANGE COUNTIES

	Rates	Fringes
PLUMBER.....	\$ 39.26	17.81

PLUM0172-001 06/01/2022

JASPER (S of the N. Side of the City of Rensselaer), MARSHALL,
PULASKI and STARKE COUNTIES

	Rates	Fringes
Plumber, Pipefitter, Steamfitter.....	\$ 38.54	21.79

PLUM0210-003 09/01/2020

JASPER (to the City of Rensselaer) and NEWTON COUNTIES

	Rates	Fringes
--	-------	---------

PLUMBER.....\$ 42.07 25.16

PLUM0392-006 06/01/2018

DEARBORN, OHIO, RIPLEY, AND SWITZERLAND COUNTIES

Rates Fringes

Plumbers and Pipefitters.....\$ 32.01 19.67

PLUM0440-002 06/04/2022

BARTHOLOMEW, BOONE, HAMILTON, HANCOCK, HENDRICKS, HOWARD,
JOHNSON AND MARION COUNTIES; MIAMI COUNTY (SOUTH OF A STRAIGHT
LINE WHERE ROUTE 218 ENTERS W. BOUNDARY); MORGAN, SHELBY and
TIPTON COUNTIES

Rates Fringes

Plumbers and Pipefitters.....\$ 41.57 18.99

PLUM0440-004 06/01/2018

FAYETTE, FRANKLIN, HENRY, RANDOLPH, RUSH, UNION and WAYNE
COUNTIES

Rates Fringes

Plumber and Steamfitter.....\$ 37.67 16.79

PLUM0502-001 08/01/2016

CLARK, FLOYD AND HARRISON COUNTIES

Rates Fringes

PLUMBER/PIPEFITTER.....\$ 32.00 20.13

PLUM0597-004 06/01/2018

JASPER (Excluding the city limits of Rensselaer), AND NEWTON
(Entire County)

Rates Fringes

PIPEFITTER.....\$ 48.50 31.12

ROOF0023-004 06/01/2021

ADAMS, ALLEN, DEKALB, ELKHART, FULTON, HUNTINGTON, KOSCIUSKO,
LAGRANGE, MARSHALL, MIAMI, NOBLE, PULASKI, STARKE, STEUBEN,
WABASH, WELLS, and WHITLEY COUNTIES

Rates Fringes

ROOFER

COMPOSITION.....\$ 30.50 19.03

SLATE & TILE.....\$ 32.00 19.03

ROOF0026-002 06/01/2021

JASPER AND NEWTON COUNTIES

	Rates	Fringes
ROOFER.....	\$ 39.59	22.07

ROOF0042-002 08/01/2021		

DEARBORN, OHIO and RIPLEY COUNTIES

	Rates	Fringes
ROOFER.....	\$ 28.85	17.05

ROOF0075-001 05/01/2021		

FAYETTE, RANDOLPH, UNION, and WAYNE Counties

	Rates	Fringes
ROOFER		
Composition.....	\$ 24.38	20.09
Slate & Tile.....	\$ 24.60	20.09

ROOF0075-002 05/01/2021		

CLINTON COUNTY

	Rates	Fringes
ROOFER		
Composition.....	\$ 24.38	20.09
Slate & Tile.....	\$ 24.60	20.09

ROOF0106-006 04/01/2021		

CRAWFORD, DAVIESS, DUBOIS, GIBSON KNOX, MARTIN, ORANGE PERRY,
PIKE, POSEY, SPENCER, VANDERBURGH AND WARRICK

	Rates	Fringes
ROOFER		
COMPOSITION.....	\$ 31.00	18.43
SLATE & TILE.....	\$ 30.80	16.52

ROOF0119-002 09/01/2021		

BARTHOLOMEW, BLACKFORD, BOONE, BROWN, DECATUR, DELAWARE,
FRANKLIN, GRANT, HAMILTON, HANCOCK, HENDRICKS, HENRY, HOWARD,
JACKSON, JAY, JENNINGS, JOHNSON, LAWRENCE, MADISON, MARION,
MONROE, MONTGOMERY, MORGAN, PUTNAM, RUSH, SHELBY, and TIPTON
Counties

	Rates	Fringes
ROOFER.....	\$ 27.80	11.75

ROOF0147-002 04/01/2018		

CLARK, FLOYD, HARRISON JEFFERSON, SCOTT, SWITZERLAND, and
WASHINGTON Counties

	Rates	Fringes
ROOFER.....	\$ 24.43	10.20

ROOF0150-002 07/01/2022		

CLAY, GREENE, OWEN, PARKE, SULLIVAN, VERMILLION AND VIGO
COUNTIES

	Rates	Fringes
ROOFER.....	\$ 28.75	17.55

SHEE0020-003 07/01/2021		

	Rates	Fringes
Sheet metal worker (HVAC Duct Work).....	\$ 32.71	25.82

SHEE0020-010 07/01/2021		

BARTHOLOMEW, BOONE, BROWN, DECATUR, DELAWARE, FAYETTE,
FRANKLIN, HAMILTON, HANCOCK, HENDRICKS, HENRY, JACKSON,
JENNINGS, JOHNSON, LAWRENCE, MADISON, MARION, MONROE,
MONTGOMERY, MORGAN, ORANGE, RIPLEY, RUSH, SHELBY, TIPTON, UNION
AND WASHINGTON COUNTIES

	Rates	Fringes
SHEET METAL WORKER.....	\$ 37.46	23.83

SHEE0020-011 07/01/2020		

CLINTON COUNTY

	Rates	Fringes
SHEET METAL WORKER.....	\$ 33.31	25.51

SHEE0020-024 07/01/2020		

CLAY, GREENE, MARTIN, OWEN, PARKE, PUTNAM, SULLIVAN,
VERMILLION, and VIGO COUNTIES

	Rates	Fringes
Sheet metal worker.....	\$ 35.71	21.95

TEAM0135-003 04/01/2021		

REMAINING COUNTIES

	Rates	Fringes
TRUCK DRIVER		
GROUP 1.....	\$ 31.16	17.27
GROUP 2.....	\$ 31.21	17.27
GROUP 3.....	\$ 31.26	17.27
GROUP 4.....	\$ 31.31	17.27
GROUP 5.....	\$ 31.36	17.27
GROUP 6.....	\$ 31.26	17.27

GROUP 7.....	\$ 31.46	17.27
GROUP 8.....	\$ 31.46	17.27
GROUP 9.....	\$ 31.56	17.27
GROUP10.....	\$ 31.01	17.27
GROUP11.....	\$ 31.56	17.27
GROUP12.....	\$ 31.66	17.27

TRUCK DRIVER CLASSIFICATIONS

GROUP 1: Single/batches axle straight trucks; Batch trucks, wet or dry 3 (34E) axle or less; Single axle Grease and maintenance truck

GROUP 2: Single axle fuel and water trucks

GROUP 3: Single axle ""dog-legs"", and tandem truck or dog-legs; Winch trucks or A-frames when used for transportation purposes; Drivers on batch trucks, wet or dry over 3 (34E) batches and tandem axle grease and maintenance truck

GROUP 4: Tandem axle fuel trucks; tandem axle water trucks; butuminous distributors (two-man)

GROUP 5: Tandem trucks over 15 tons payload; Single axle semi trucks; Farm tractors hauling material; Mixer trucks (all types); Trucks pulling tilt-top trailer single axle; Single axle low- boys; Truck-mounted pavement breakers

GROUP 6: Tandem trucks or ""dog-legs""; Semi-water Truck; Sprinkler Truck; Heavy equipment-type water wagons, 5,000 gallons and under; butuminous distributors (one-man)

GROUP 7: Tri-axle trucks; Tandem axle semi trucks; Equipment when not self-loaded or pusher loaded, such as Koehring or similar dumpsters, track trucks, Euclid bottom dump and hug bottom dump, tournatrailers, tournarockers, Acey wagons or for similar equipment (12 cu yds or less); Mobile mixer truck; Tandem Axle trucks pulling tilt-top trailer; Tandem - Axle lowboy; Tri- Axle batch Truck; Tri-Axle grease and maintenance truck

GROUP 8: Tandem-tandem semi trucks; Truck mechanics and welders; Heavy equipment-type water wagon over 5,000 gallons; Tri-Axle Trucks pulling tilt-top trailer; Low-boys, tandem-tandem axle

GROUP 9: Low-boys, tandem tri-axle; Acey wagons up to and including 3 buckets; Equipment when not self-loaded or pusher loaded, such as koehring or similar dumpsters, Track Trucks, Euclid bottom dump and hug bottom dump, Tournatrailers, Tournarockers, Acey wagons or for similar equipment (over 12 cu yds.)

GROUP 10: Pick-up trucks

GROUP 11: Helpers; Greasers; Tire men; Batch board tenders; Warehouseman

GROUP 12: Acey wagon (over 3 buckets); Quad Axle Trucks; Articulating Dump

WELDERS - Receive rate prescribed for craft performing operation to which welding is incidental.

=====

Note: Executive Order (EO) 13706, Establishing Paid Sick Leave for Federal Contractors applies to all contracts subject to the Davis-Bacon Act for which the contract is awarded (and any solicitation was issued) on or after January 1, 2017. If this contract is covered by the EO, the contractor must provide employees with 1 hour of paid sick leave for every 30 hours they work, up to 56 hours of paid sick leave each year. Employees must be permitted to use paid sick leave for their own illness, injury or other health-related needs, including preventive care; to assist a family member (or person who is like family to the employee) who is ill, injured, or has other health-related needs, including preventive care; or for reasons resulting from, or to assist a family member (or person who is like family to the employee) who is a victim of, domestic violence, sexual assault, or stalking. Additional information on contractor requirements and worker protections under the EO is available at <https://www.dol.gov/agencies/whd/government-contracts>.

Unlisted classifications needed for work not included within the scope of the classifications listed may be added after award only as provided in the labor standards contract clauses (29CFR 5.5 (a) (1) (ii)).

The body of each wage determination lists the classification and wage rates that have been found to be prevailing for the cited type(s) of construction in the area covered by the wage determination. The classifications are listed in alphabetical order of ""identifiers"" that indicate whether the particular rate is a union rate (current union negotiated rate for local), a survey rate (weighted average rate) or a union average rate (weighted union average rate).

Union Rate Identifiers

A four letter classification abbreviation identifier enclosed in dotted lines beginning with characters other than ""SU"" or ""UAVG"" denotes that the union classification and rate were prevailing for that classification in the survey. Example: PLUM0198-005 07/01/2014. PLUM is an abbreviation identifier of the union which prevailed in the survey for this classification, which in this example would be Plumbers. 0198 indicates the local union number or district council number where applicable, i.e., Plumbers Local 0198. The next number, 005 in the example, is an internal number used in processing the wage determination. 07/01/2014 is the effective date of the most current negotiated rate, which in this example is July 1, 2014.

Union prevailing wage rates are updated to reflect all rate changes in the collective bargaining agreement (CBA) governing this classification and rate.

Survey Rate Identifiers

Classifications listed under the ""SU"" identifier indicate that no one rate prevailed for this classification in the survey and the published rate is derived by computing a weighted average

rate based on all the rates reported in the survey for that classification. As this weighted average rate includes all rates reported in the survey, it may include both union and non-union rates. Example: SULA2012-007 5/13/2014. SU indicates the rates are survey rates based on a weighted average calculation of rates and are not majority rates. LA indicates the State of Louisiana. 2012 is the year of survey on which these classifications and rates are based. The next number, 007 in the example, is an internal number used in producing the wage determination. 5/13/2014 indicates the survey completion date for the classifications and rates under that identifier.

Survey wage rates are not updated and remain in effect until a new survey is conducted.

Union Average Rate Identifiers

Classification(s) listed under the UAVG identifier indicate that no single majority rate prevailed for those classifications; however, 100% of the data reported for the classifications was union data. EXAMPLE: UAVG-OH-0010 08/29/2014. UAVG indicates that the rate is a weighted union average rate. OH indicates the state. The next number, 0010 in the example, is an internal number used in producing the wage determination. 08/29/2014 indicates the survey completion date for the classifications and rates under that identifier.

A UAVG rate will be updated once a year, usually in January of each year, to reflect a weighted average of the current negotiated/CBA rate of the union locals from which the rate is based.

WAGE DETERMINATION APPEALS PROCESS

1.) Has there been an initial decision in the matter? This can be:

- * an existing published wage determination
- * a survey underlying a wage determination
- * a Wage and Hour Division letter setting forth a position on a wage determination matter
- * a conformance (additional classification and rate) ruling

On survey related matters, initial contact, including requests for summaries of surveys, should be with the Wage and Hour National Office because National Office has responsibility for the Davis-Bacon survey program. If the response from this initial contact is not satisfactory, then the process described in 2.) and 3.) should be followed.

With regard to any other matter not yet ripe for the formal process described here, initial contact should be with the Branch of Construction Wage Determinations. Write to:

Branch of Construction Wage Determinations
Wage and Hour Division
U.S. Department of Labor
200 Constitution Avenue, N.W.
Washington, DC 20210

2.) If the answer to the question in 1.) is yes, then an

interested party (those affected by the action) can request review and reconsideration from the Wage and Hour Administrator (See 29 CFR Part 1.8 and 29 CFR Part 7). Write to:

Wage and Hour Administrator
U.S. Department of Labor
200 Constitution Avenue, N.W.
Washington, DC 20210

The request should be accompanied by a full statement of the interested party's position and by any information (wage payment data, project description, area practice material, etc.) that the requestor considers relevant to the issue.

3.) If the decision of the Administrator is not favorable, an interested party may appeal directly to the Administrative Review Board (formerly the Wage Appeals Board). Write to:

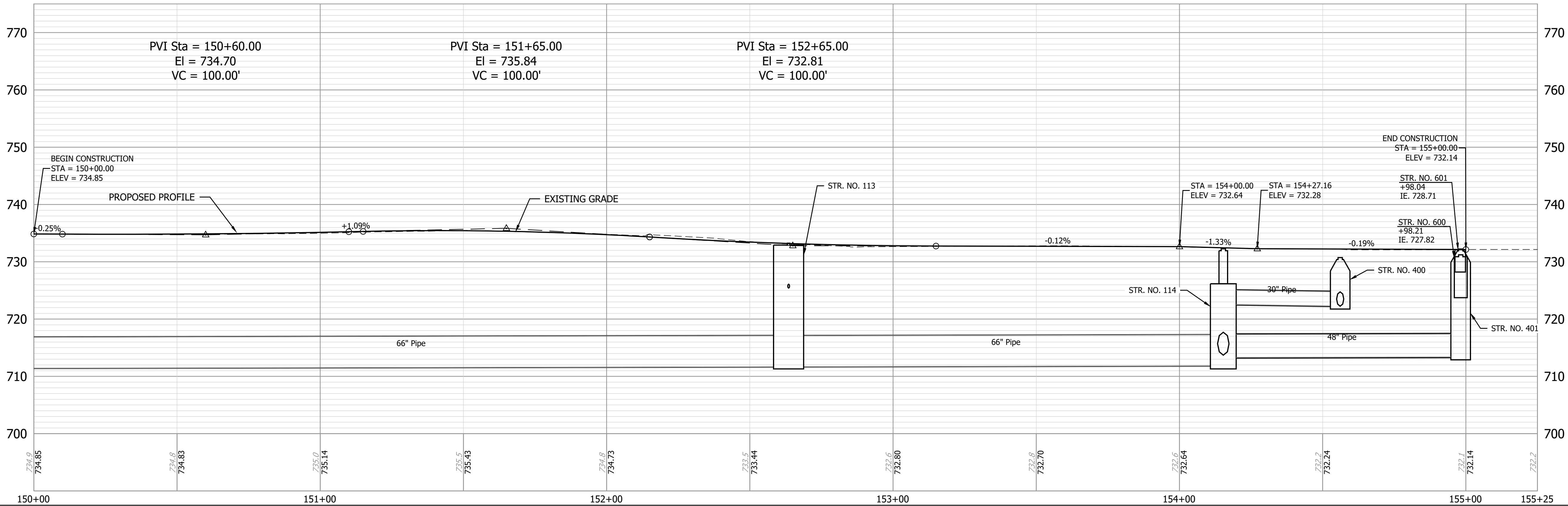
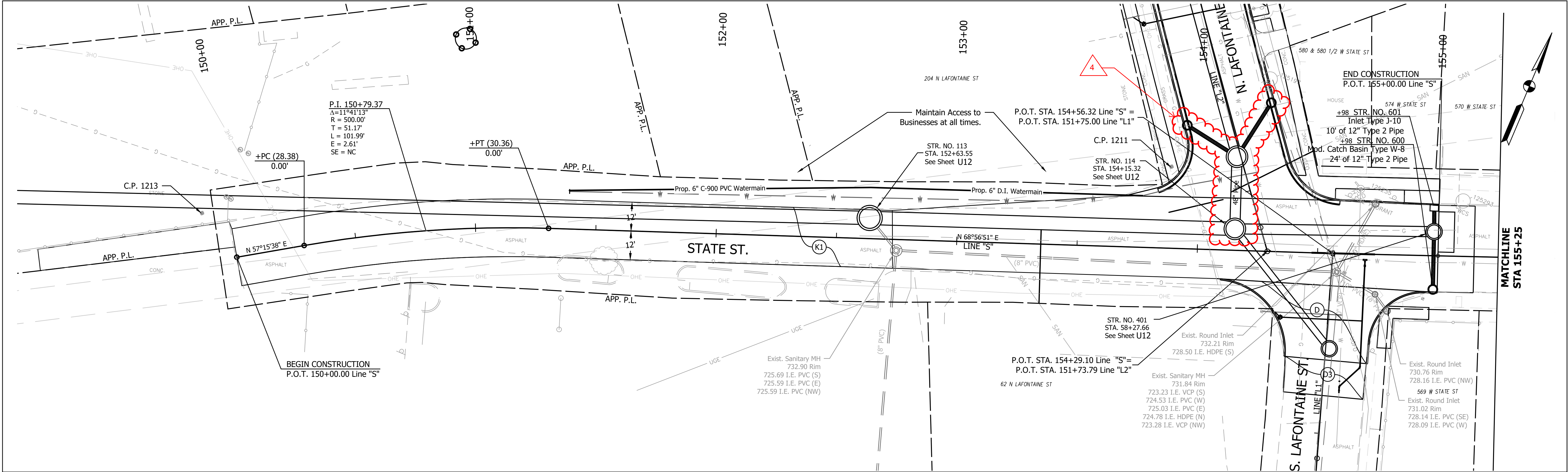
Administrative Review Board
U.S. Department of Labor
200 Constitution Avenue, N.W.
Washington, DC 20210

4.) All decisions by the Administrative Review Board are final.

=====

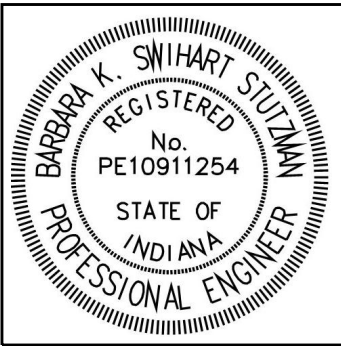
END OF GENERAL DECISIO"

ATTACHMENT B: REVISED PLAN SHEETS



REVISIONS		
DATE	REVISION	BY
08/11/22	Addendum	BSS

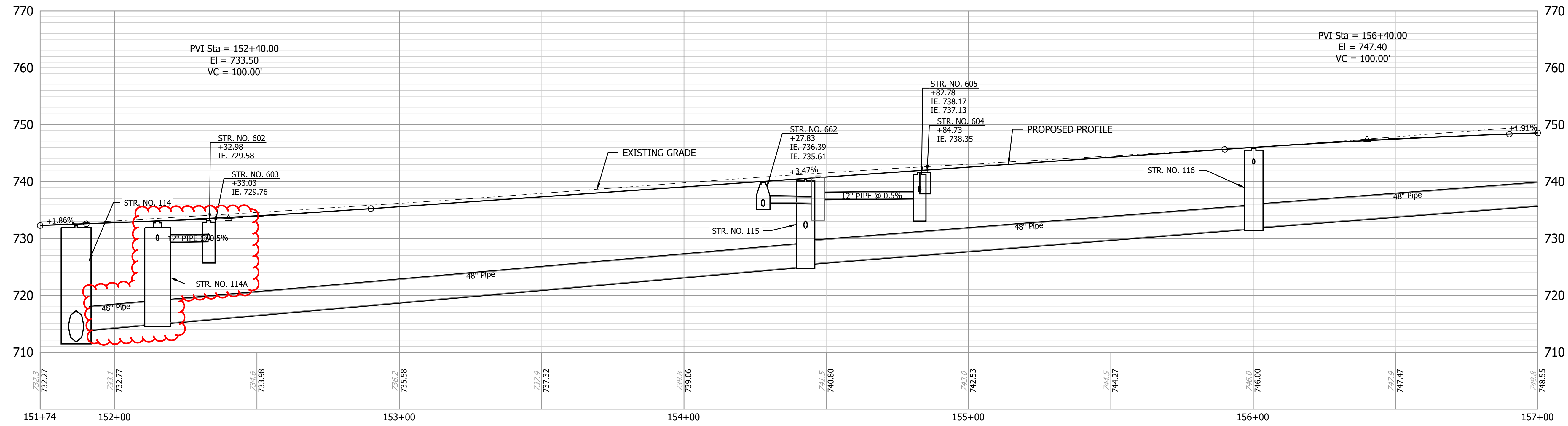
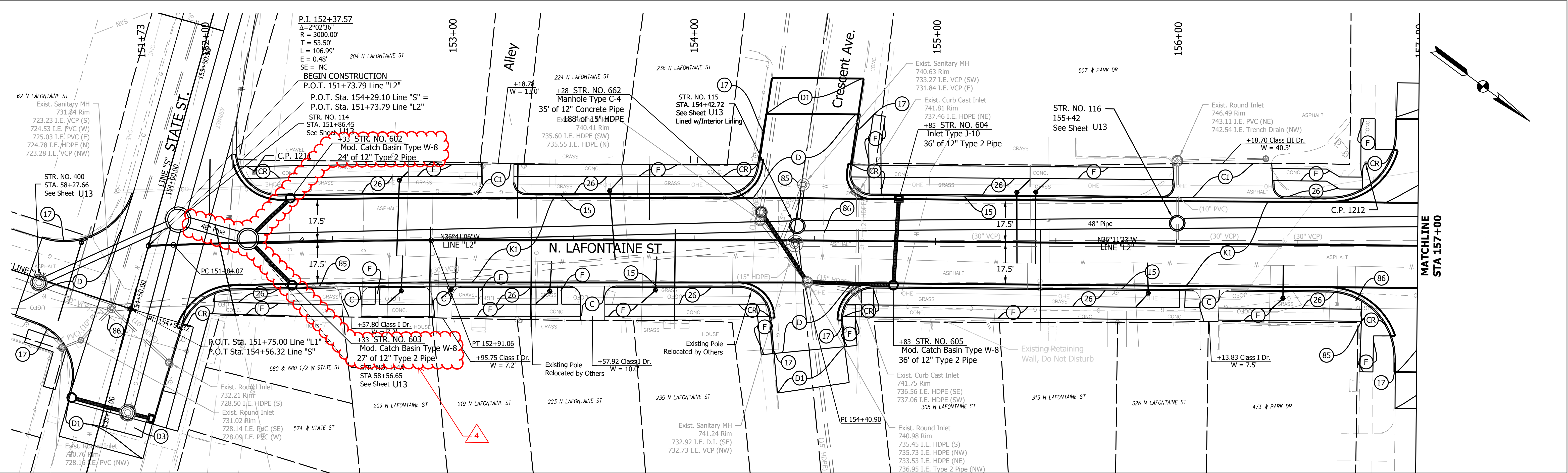
- (D) HMA for Approaches, Type B, consisting of:
165 lb/sys HMA Surface, Type B, on
275 lb/sys HMA Intermediate, Type B, on
6\"/>
- (D1) Milling, Asphalt, 1 1/2 IN.
1.5 IN. HMA Surface, Type B
- (K1) 1.5 IN. HMA Surface, Type B on
2 IN. HMA Intermediate, Type B on
3 IN. HMA Base, Type B on
12 IN. Compacted Aggregate No. 53
- (D3) HMA Patching, Type B



RECOMMENDED FOR APPROVAL <i>Barbie Swihart Stutzman</i> 08/11/2022 BARBIE SWIHART STUTZMAN DATE	
DESIGNED: MMT	DRAWN: MMT
CHECKED: BSS	CHECKED: BSS

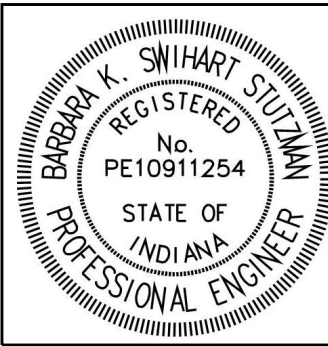
CITY OF HUNTINGTON LTCP PROJECTS 7 & 8: NORTHSIDE INTERCEPTOR SEWER	
PLAN & PROFILE LINE "S"	

SCALE H: 1" = 20' - V: 1" = 10'	
CONSULTANT PROJECT NUMBER 120-3003-02W	
SHEET SP5	



- (C1) PCCP for Approaches, 9 in. on Subgrade Treatment Type II (6 in. Coarse Aggregate No. 53)
- (D) HMA for Approaches, Type B, consisting of:
 - 165 lb/sys HMA Surface, Type B, on
 - 275 lb/sys HMA Intermediate, Type B, on
 - 6" Compacted Aggregate, No. 53, on
 - Subgrade Treatment Type II (6 in. Coarse Aggregate No. 53)
- (K1) 1.5 IN. HMA Surface, Type B on 2 IN. HMA Intermediate, Type B on 3 IN. HMA Base, Type B on 12 IN. Compacted Aggregate No. 53
- (D3) HMA Patching, Type B
- (85) Casting, Adjust to Grade
- (D1) Milling, Asphalt, 1 1/2 IN. 1.5 IN. HMA Surface, Type B

REVISIONS		
DATE	REVISION	BY
08/11/22	Addendum 4	BSS

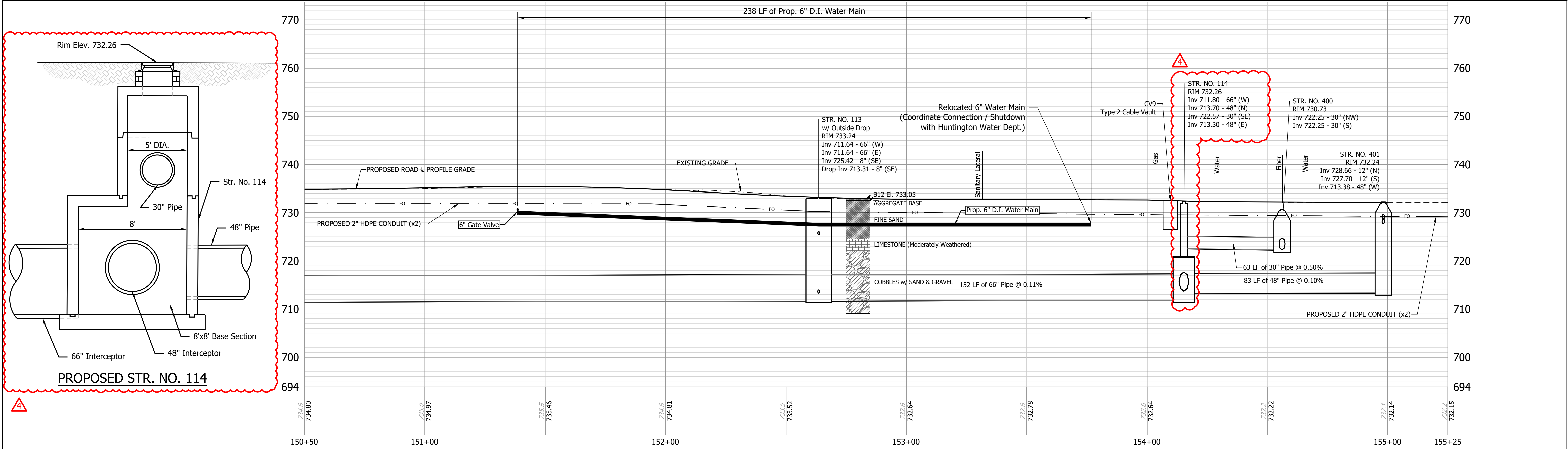
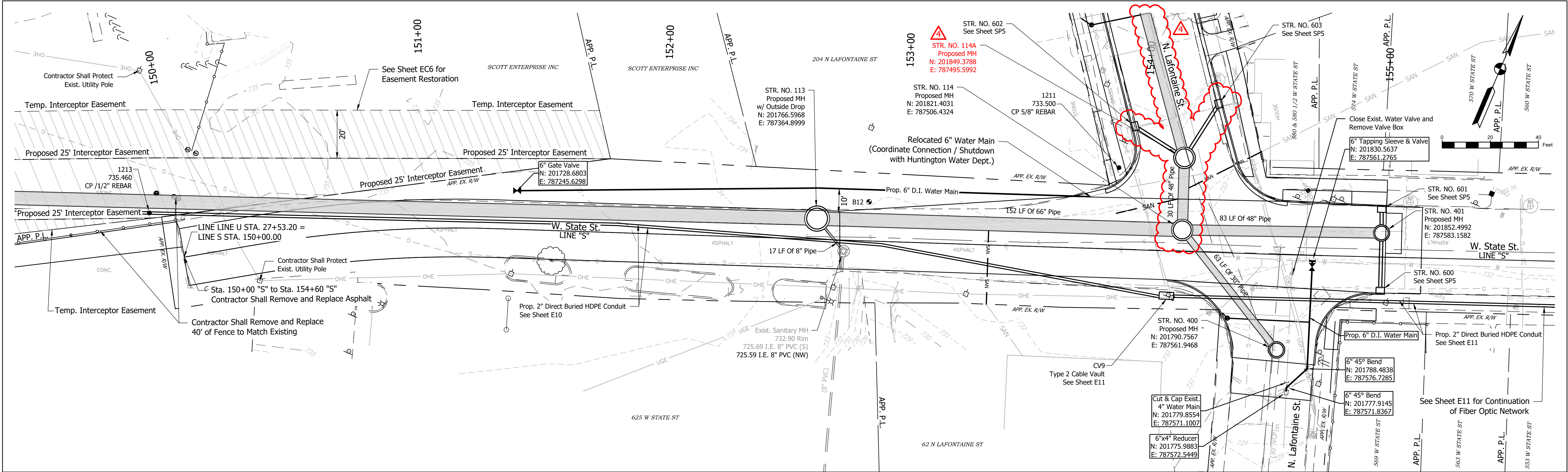


RECOMMENDED FOR APPROVAL	Barbie Swihart Stutzman	08/11/2022
DESIGNED:	MMT	DRAWN: MMT
CHECKED:	BSS	CHECKED: BSS


CITY OF HUNTINGTON
LTCP PROJECTS 7 & 8: NORTHSIDE INTERCEPTOR SEWER
PLAN & PROFILE
LINE "L2"

SCALE
H: 1" = 20' - V: 1" = 10'
CONSULTANT PROJECT NUMBER
120-3003-02W
SHEET
SP6

Date: Aug 11, 2022 5:22pm User: Numpy_TheIsky
File: X:\Production\Files\2020\120-3003\PR-02\CAD\Interceptor Project\Plans\Plan & Profile - Line L.dwg



REVISIONS		
DATE	REVISION	BY
08/11/22	Addendum No.	TNM

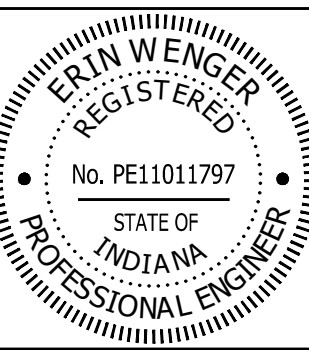


Know what's below.
Call before you dig.


- B# Soil Boring
- S# Rock Sounding
- SAN — Prop. Sanitary Service
- W — Prop. Water Service with Meter



LOCHMUELLER GROUP
7223 Engle Road, Suite 105
Fort Wayne, Indiana 46819
PHONE: 260.494.1901



ERIN WENGER
REGISTERED
No. PE11011797
STATE OF INDIANA
PROFESSIONAL ENGINEER

RECOMMENDED FOR APPROVAL  07/01/22
Erin Wenger, P.E., CFM DATE

DESIGNED: DEW DRAWN: TNM

CHECKED: EW CHECKED: MJC

CITY OF HUNTINGTON
LTCP PROJECTS 7 & 8: NORTHSIDE INTERCEPTOR SEWER

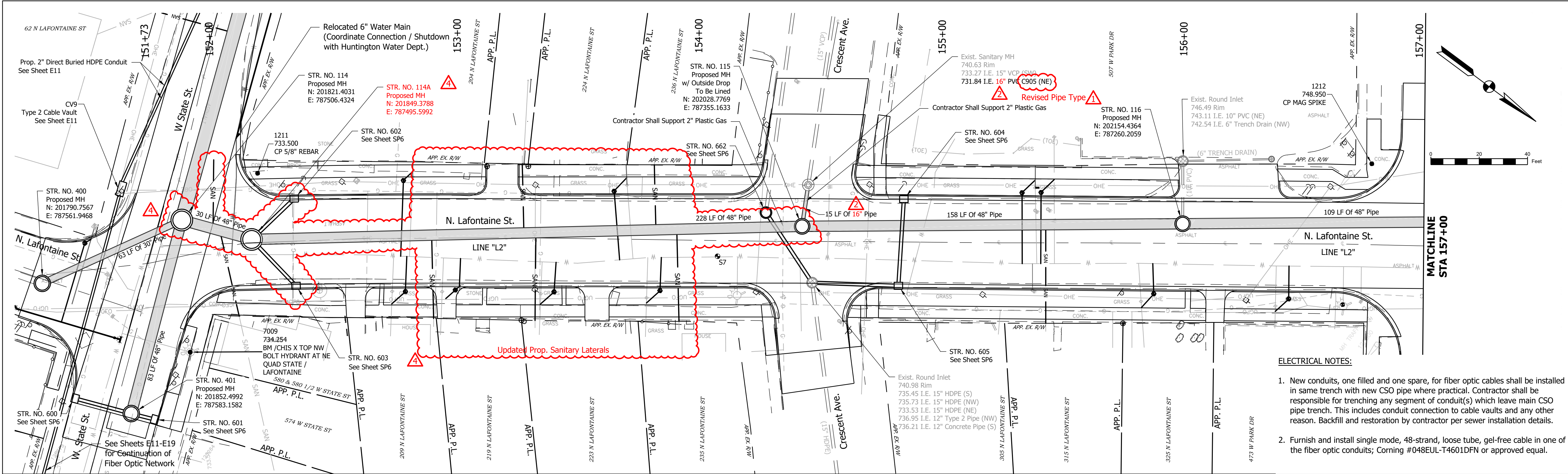
UTILITY PLAN & PROFILE
LINE "S"

SCALE
H: 1" = 20' - V: 1" = 10'

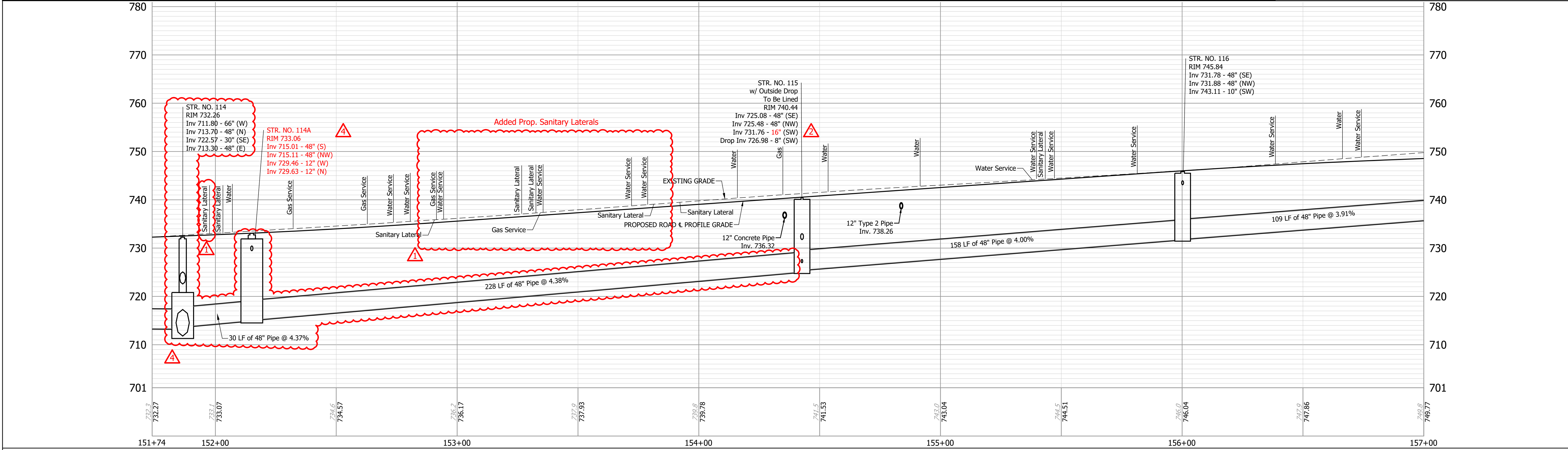
CONSULTANT PROJECT NUMBER
120-3003-02W

SHEET
U12

Date: Aug 12, 2022 10:23am User Name: TNM
File: X:\Production\Files\2020\120-3003\PR-02\CAD\Interceptor Project\Plans\Line S R88.dwg



- ELECTRICAL NOTES:**
- New conduits, one filled and one spare, for fiber optic cables shall be installed in same trench with new CSO pipe where practical. Contractor shall be responsible for trenching any segment of conduit(s) which leave main CSO pipe trench. This includes conduit connection to cable vaults and any other reason. Backfill and restoration by contractor per sewer installation details.
 - Furnish and install single mode, 48-strand, loose tube, gel-free cable in one of the fiber optic conduits; Corning #048EUL-T4601DFN or approved equal.



REVISIONS		
DATE	REVISION	BY
07/27/22	Addendum No. 1	TNM
08/05/22	Addendum No. 2	TNM
08/11/22	Addendum No. 3	TNM

811
Know what's below.
Call before you dig.

● B# Soil Boring
● S# Rock Sounding
— SAN — Prop. Sanitary Service
— W — Prop. Water Service with Meter

LOCHMUELLER GROUP
7223 Engle Road, Suite 105
Fort Wayne, Indiana 46819
PHONE: 260.494.1901

ERIN WENGER
REGISTERED
No. PE11011797
STATE OF INDIANA
PROFESSIONAL ENGINEER

RECOMMENDED FOR APPROVAL
Erin Wenger 07/01/22
Erin Wenger, P.E., CFM DATE

DESIGNED: DEW DRAWN: TNM
CHECKED: EW CHECKED: MJC

CITY OF HUNTINGTON
LTCP PROJECTS 7 & 8: NORTHSIDE INTERCEPTOR SEWER

UTILITY PLAN & PROFILE
LINE "L2"

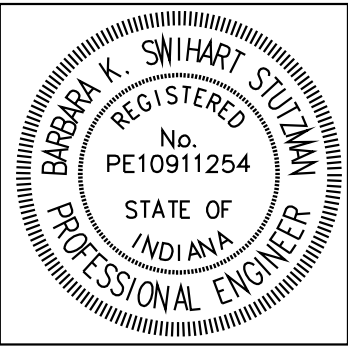
SCALE
H: 1" = 20' - V: 1" = 10'
CONSULTANT PROJECT NUMBER
120-3003-02W
SHEET
U13

Date: Aug 12, 2022 11:25am User Name: TNM
File: X:\Production\Files\120-3003\PR-02\CAD\Interceptor Project\Plans\Line L P&P.dwg

Date: Aug 12, 2022, 11:38am User Name: TThink
File: X:\Production\Files\2020\120-3003\PRJ-02\CAD\Interceptor Project\Plans\Tables\Str. Structure Data Table.dwg

STRUCTURE DATA																														
STRUCTURE NUMBER	LOCATION				PIPE TYPE	MANHOLE, INLET, CATCH BASIN, OR SPECIALTY STRUCTURE AND TYPE	LENGTH	SKEW	FLOW LINE			SERVICE LIFE	SITE DESIGNATION	pH	BACKFILL METHOD	STRUCTURE BACKFILL		REVTMENT RIPRAP	CONCRETE, CLASS A, FOR STR.	VIDEO INSPECTION	PIPE END SECTION	GRATED BOX END SECTION			SAFETY METAL END SECTION			RIM	REMARKS	
	STATION	LEFT	CROSS	RIGHT					COVER	UP STREAM	DOWN STREAM					TYPE	CYS					TYPE	SLOPE	EA.	TYPE	SLOPE	EA.			
																														IN.
	Line "WWTP"																													
99	10+60.79			X																								719.49		
100	11+26.14			X	72	2	9'x9' w/Type 4 Casting	65			708.36	708.29	75		7	1	2	234.5			65								718.50	
	Line "H"																													
101	150+06.60	X			72	2	9'x9' w/Type 4 Casting	97			708.46	708.36	75		7	1	2	459.3			97								718.53	
102	154+66.96	X			72	2	Manhole N-4	461			707.85	707.56	75		7	1	2	1856.4			461								717.94	
103	159+66.93	X			72	2	Manhole N-4	500			708.17	707.85	75		7	1	2	2249.6			500								720.63	
104	164+66.73	X			72	2	Manhole N-4	500			708.49	708.17	75		7	1	2	2856.6			500								722.36	
	Line "LR"																													
105	10+61.90	X			72	2	Manhole N-4	264			708.66	708.49	75		7	1	2	1723.8			264								723.55	
106	13+94.34	X			72	2	Manhole N-4	332			708.87	708.66	75		7	1	2	2144.3			332								722.54	
	Line "RR"																													
107	10+35.37	X			72	2	9'x9' w/Type 4 Casting	324			709.08	708.87	75		7	1	2	639.9			324								718.00	
	Line "U"																													
108	10+48.93	X			66	2	9'x9' w/Type 4 Casting	166			709.65	709.48	75		7	1	2	1415.1			166								724.81	Use Hobas Pipe
109	13+10.00	X			66	2	Manhole N-4	261			709.92	709.65	75		7	1	2	3748.6			261								727.33	
110	17+64.57	X			66	2	Manhole N-4	455			710.38	709.92	75		7	1	2	3565.3			455								727.68	
111	21+63.80	X			66	2	Manhole N-4	399			710.78	710.38	75		7	1	2	4432.5			399								732.83	Use A-Lok Seals
112	25+90.00	X			66	2	Manhole N-4	426			711.21	710.78	75		7	1	2	5351.2			426								735.05	
	Line "S"																													
113	152+63.55		X		66	2	Manhole N-4	426			711.64	711.21	75		7	1	2	1681.2			426								733.24	Use A-Lok Seals
600	154+98.00		X		12	2	Catch Basin, Type W-8	24			727.82	727.70	75		7	1	2	2.8											731.22	
601	154+98.00	X			12	2	Inlet, Type J-10	10			728.71	728.66	75		7	1	2	0.6											732.11	
400	154+56.12		X		30	2	Manhole J-4	63			722.25	722.57	75		7	1	2	158.6											730.73	
401	154+98.19		X		48	2	Manhole L-4	83			713.38	713.30	75		7	1	2	341.1											732.24	
	Line "L2"																													
114	151+86.45	X			66	2	Custom w/Type 4 Casting	152			711.80	711.64	75		7	1	2	571.2			152								732.26	
114A	152+15.04	X			48	2	Manhole L-4	30			715.01	713.70	75		7	1	2	130.8			30								733.06	To be Lined
602	152+33.00	X			12	2	Catch Basin, Type W-8	24			729.58	729.46	75		7	1	2	7.4											733.16	
603	152+33.00			X	12	2	Catch Basin, Type W-8	27			729.76	729.63	75		7	1	2	8.2											733.16	
662	154+28.00	X			12	2	Manhole C-4	35			736.39	736.21	75		7	1	2	6.4											739.79	
115	154+42.72		X		48	2	Manhole L-4	228			725.08	715.11	75		7	1	2	989.9			228								740.44	To be Lined
604	154+85.00	X			12	2	Inlet, Type J-10	36			738.35	738.17	75		7	1	2	4.8											741.65	
605	154+83.00			X	12	2	Catch Basin, Type W-8	36			737.13	736.95	75		7	1	2	7.2											741.57	
116	156+00.00		X		48	2	Manhole L-4	158			731.78	725.48	75		7	1	2	770.5			158								745.84	
117	157+08.74	X			48	2	Manhole L-4	109			736.12	731.88	75		7	1	2	464.6			109								748.52	To be Lined
608	157+58.00			X	12	2	Inlet, Type J-10	36			746.14	745.96	75		7	1	2	5.3											749.54	
609	157+58.00	X			12	2	Catch Basin, Type W-8	50			745.36	745.11	75		7	1	2	9.2											749.53	
118	160+33.43	X			48	2	Manhole N-4	325			737.45	737.12	75		7	1	2	5401.5			325								759.15	Use A-Lok Seals
403	160+78.76	X			30	2	Manhole J-4	36			752.18	752.34	75		7	1	2	12.7											760.91	
610	161+79.00	X			12	2	Catch Basin, Type W-8	19			756.73	756.63	75		7	1	2	3.6											760.43	
611	161+79.00			X	12	2	Catch Basin, Type W-8	16			756.97	756.89	75		7	1	2	2.8											760.50	To be Lined
	Line "T1"																													
402	150+96.19	X			30	2	Manhole J-4	11			750.14	750.04	75		7	1	2	63.2											759.56	
612	151+57.00			X	12	2	Inlet, Type J-10	63			756.07	755.75	75		7	1	2	9.8											759.76	
404	155+09.04	X			8	2	Manhole C-4	413			764.00	751.61	75		7	1	2	255.7			413								771.79	
613	155+42.00	X			12	2	Catch Basin, Type W-8	17			769.84	769.75	75		7	1	2	1.5											773.08	To be Lined

REVISIONS		
DATE	REVISION	BY
08/11/22	Addendum No. 4	DEW



RECOMMENDED FOR APPROVAL	<i>Barbie Swihart Stutzman</i>	07/01/22
	BARBIE SWIHART STUTZMAN	DATE
DESIGNED: JRM	DRAWN: JRM	
CHECKED: BSS	CHECKED: BSS	

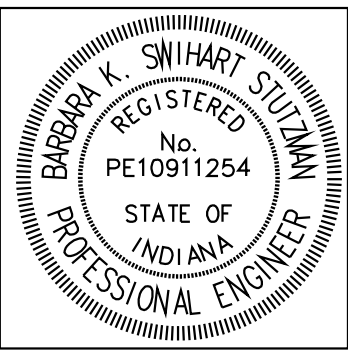
CITY OF HUNTINGTON
LTCP PROJECTS 7 & 8: NORTHSIDE INTERCEPTOR SEWER
STRUCTURE DATA TABLES
SHEET 1 OF 4

SCALE
H: 1" = N/A - V: N/A
CONSULTANT PROJECT NUMBER
120-3003-02W
SHEET
T9

Date: Aug 12, 2022, 11:39am User Name: TThink
File: X:\Production\Files\2020\120-3003\PRJ-02\CAD\Interceptor Project Plans\Tables\Shr. Structure Data Table.dwg

STRUCTURE DATA																																	
STRUCTURE NUMBER	LOCATION				PIPE TYPE	MANHOLE, INLET, CATCH BASIN, OR SPECIALTY STRUCTURE AND TYPE	LENGTH	SKEW	FLOW LINE			SERVICE LIFE	SITE DESIGNATION	pH	BACKFILL METHOD	STRUCTURE BACKFILL		REVETMENT RIPRAP	CONCRETE, CLASS A, FOR STR.	VIDEO INSPECTION	PIPE END SECTION	GRATED BOX END SECTION			SAFETY METAL END SECTION			RIM	REMARKS				
	STATION	LEFT	CROSS	RIGHT					IN.	FT	ELEV.					ELEV.	YR					TYPE	CYS	TONS	CYS	LFT	EA.			TYPE	SLOPE	EA.	TYPE
	Line "T1"						LFT																										
406	155+58.97		X		30	2				763.74	763.70	75		7	1	2	235.7											773.38					
119	155+58.98			X	48	2				737.92	737.45	75		7	1	2	4904.7			465								771.92	Use A-Lok Seals				
405	155+59.13	X			30	2				757.89	757.81	75		7	1	2	4.7											772.30					
407	155+63.12		X		21	2				764.44	764.43	75		7	1	2	8.7											773.53					
614	155+67.00	X			12	2				769.82	769.78	75		7	1	2	0.7											773.10					
615	158+57.00			X	12	2				764.34	764.12	75		7	1	2	7.6											767.74					
408	158+62.71	X			8	2				760.57	759.36	75		7	1	2	78.3			304								768.20					
616	158+94.00	X			12	2				766.68	766.64	75		7	1	2	1.0											770.02					
120	159+00.53		X		48	2				738.27	737.92	75		7	1	2	4744.9			341								768.05	Use A-Lok Seals				
409	159+00.60	X			30	2				754.29	754.21	75		7	1	2	30.8											768.47					
410	159+01.09			X	30	2				761.41	761.37	75		7	1	2	53.0											770.18	To be Lined				
411	159+13.59		X		18	2				762.34	762.31	75		7	1	2	17.8											771.06	To be Lined				
617	159+20.00	X			12	2				766.65	766.55	75		7	1	2	2.9											769.97	To be Lined				
618	162+04.00			X	12	2				760.47	760.20	75		7	1	2	9.7											763.87					
412	162+09.40	X			8	2				757.00	755.76	75		7	1	2	304.9			309								764.65					
619	162+41.00	X			12	2				763.37	763.28	75		7	1	2	2.6											765.83	To be Lined				
121	162+57.91			X	48	2				738.62	738.27	75		7	1	2	4131.2			357								764.26	Use A-Lok Seals				
413	162+57.96		X		30	2				752.47	752.38	75		7	1	2	21.8											764.77					
414	162+58.10		X		30	2				757.98	757.94	75		7	1	2	22.3											766.89					
415	162+64.74		X		24	2				758.49	758.48	75		7	1	2	10.9											767.15					
620	162+65.60	X			12	2				763.23	763.19	75		7	1	2	1.3											766.44					
621	164+12.00			X	12	2				758.99	758.40	75		7	1	2	22.3											763.23					
622	165+31.00			X	12	2				758.40	758.03	75		7	1	2	19.7											761.79					
416	165+51.85	X			8	2				755.12	753.94	75		7	1	2	235.0			294								762.91					
623	165+88.50	X			12	2				761.26	761.12	75		7	1	2	3.8											764.45	To be Lined				
123	166+02.99			X	48	2				751.93	751.91	75		7	1	2	46.8			15								762.17	Use A-Lok Seals				
124	166+02.99		X		48	2				738.99	738.95	75		7	1	2	135.9			13								763.59					
122	166+02.99			X	48	2				738.95	738.62	75		7	1	2	3444.4			345								762.93	Use A-Lok Seals				
624	166+16.00	X			12	2				760.13	760.00	75		7	1	2	5.4											764.40					
625	169+04.00			X	12	2				754.95	754.67	75		7	1	2	12.7											758.34					
417	169+04.43	X			8	2				750.75	749.54	75		7	1	2	320.8			301								758.75					
626	169+38.00	X			12	2				756.98	756.89	75		7	1	2	2.4											760.18	To be Lined				
125	169+53.73		X		48	2				739.34	738.99	75		7	1	2	3067.8			351								759.58					
418	169+53.64	X			30	2				751.08	751.05	75		7	1	2	42.1											760.55					
419	169+59.57	X			24	2				751.59	751.58	75		7	1	2	11.5											760.79					
627	169+63.00	X			12	2				757.00	756.95	75		7	1	2	3.9											760.25					
628	171+67.00			X	12	2				750.96	750.55	75		7	1	2	18.1											754.36					
629	172+49.00			X	12	2				750.55	750.23	75		7	1	2	30.1											755.30					
630	172+87.50	X			12	2				755.26	755.16	75		7	1	2	2.7											758.46	To be Lined				
126	173+06.06		X		48	2				739.69	739.34	75		7	1	2	2494.5			352								757.63					
420	173+05.91	X			30	2				748.24	748.22	75		7	1	2	50.6											758.81					
421	173+09.63	X			18	2				749.15	749.14	75		7	1	2	9.9											759.13					
631	173+13.40	X			12	2				755.29	755.25	75		7	1	2	3.5											758.50					

REVISIONS		
DATE	REVISION	BY
08/11/22	Addendum No. 4	DEW



RECOMMENDED FOR APPROVAL		07/01/22	
Barbie Swihart Stutzman		DATE	
BARBIE SWIHART STUTZMAN			
DESIGNED: JRM	DRAWN: JRM		
CHECKED: BSS	CHECKED: BSS		

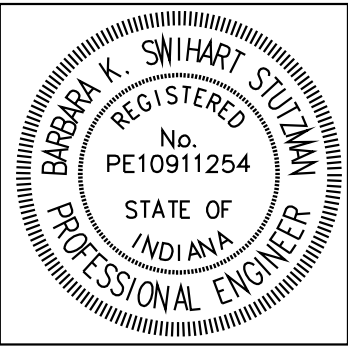
CITY OF HUNTINGTON	
LTCP PROJECTS 7 & 8: NORTHSIDE INTERCEPTOR SEWER	
STRUCTURE DATA TABLES	
SHEET 2 OF 4	

SCALE
H: 1" = N/A - V: N/A
CONSULTANT PROJECT NUMBER
120-3003-02W
SHEET
T10

Date: Aug 12, 2022, 11:39am User Name: TThink
File: X:\Production\Files\2020\120-3003\PRJ-02\CAD\Interceptor Project\Plans\Tables\Shr. Structure Data Table.dwg

STRUCTURE DATA																																		
STRUCTURE NUMBER	LOCATION				SIZE	PIPE TYPE	MANHOLE, INLET, CATCH BASIN, OR SPECIALTY STRUCTURE AND TYPE	LENGTH	SKEW	FLOW LINE			SERVICE LIFE	SITE DESIGNATION	pH	BACKFILL METHOD	STRUCTURE BACKFILL		REVETMENT RIPRAP	CONCRETE, CLASS A, FOR STR.	VIDEO INSPECTION	PIPE END SECTION	GRATED BOX END SECTION			SAFETY METAL END SECTION			RIM	REMARKS				
	STATION	LEFT	CROSS	RIGHT						COVER	UP STREAM	DOWN STREAM					TYPE	CYS					TONS	CYS	LFT	EA.	TYPE	SLOPE			EA.	TYPE	SLOPE	EA.
	Line "T1"																																	
632	174+61.00			X	12	2	Inlet, Type J-10	139			752.64	751.94	75		7	1	2	29.5											756.04					
633	176+00.00			X	12	2	Catch Basin, Type W-8	30			751.94	751.79	75		7	1	2	10.5											756.59					
127	176+04.81		X		48	2	Manhole L-4	299			739.98	739.69	75		7	1	2	1908.6			299								757.43					
634	176+37.00	X			12	2	Catch Basin, Type W-8	14			754.60	754.52	75		7	1	2	7.8											758.38					
665	176+49.41		X		30	2	Manhole J-4	15			749.67	749.52	75		7	1	2	15.0			15								758.71	Need Boots or A-Lok				
128	176+49.50	X			48	2	Manhole L-4	49			740.03	739.98	75		7	1	2	322.3			49								758.22					
129	176+49.59		X		42	2	Manhole K-4	52			741.32	744.03	75		7	1	2	200.6			52								756.28					
	Line "T2"																																	
635	176+83.00	X			12	2	Inlet, Type J-10	24			754.30	754.17	75		7	1	2	7.67											758.67	To be Lined				
636	176+86.00			X	12	2	Inlet, Type J-10	38			754.49	754.30	75		7	1	2	10.80											757.89	To be Lined				
637	178+92.00			X	12	2	Catch Basin, Type W-8	21			756.85	756.74	75		7	1	2	3.15											760.24	To be Lined				
638	178+92.00	X			12	2	Catch Basin, Type W-8	7			756.99	756.95	75		7	1	2	1.00											760.38					
130	178+92.00		X		36	2	Manhole K-4	240			741.31	740.83	75		7	1	2	1285.58			240								760.52					
639	180+00.00	X			12	2	Catch Basin, Type W-8	22			758.85	758.74	75		7	1	2	2.42											762.28					
131	180+02.70		X		36	2	Manhole K-4	111			741.53	741.31	75		7	1	2	662.77			111								762.02					
640	180+31.50	X			12	2	Inlet, Type J-10	31			759.03	758.85	75		7	1	2	5.26											762.46	To be Lined				
132	181+24.36		X		36	2	Manhole K-4	122			741.77	741.53	75		7	1	2	745.38			122								761.67					
643	181+98.00		X		18	2	Manhole C-4	200			749.15	748.08	75		7	1	2	301.88											761.05					
641	181+98.00	X			12	2	Inlet, Type J-10	14			757.38	757.31	75		7	1	2	2.65											760.77	To be Lined				
642	181+98.00			X	12	2	Inlet, Type J-10	15			757.52	757.44	75		7	1	2	2.72											760.91					
644	183+97.00			X	12	2	Inlet, Type J-10	21			755.89	755.78	75		7	1	2	3.49											759.28	To be Lined				
645	183+97.00	X			12	2	Inlet, Type J-10	7			756.03	755.99	75		7	1	2	1.23											759.42					
646	183+97.00		X		18	2	Manhole C-4	89			748.08	747.72	75		7	1	2	129.32											759.57					
647	184+86.50		X		18	2	Manhole C-4	68			747.72	747.38	75		7	1	2	87.81											758.48	To be Lined				
133	184+87.42	X			36	2	Manhole K-4	362			742.49	741.77	75		7	1	2	1888.91			362								758.30					
648	185+53.00		X		24	2	Manhole C-4	121			746.88	746.40	75		7	1	2	283.01											758.09	To be Lined				
134	185+53.57	X			36	2	Manhole K-4	66			742.62	742.49	75		7	1	2	288.47			66								758.09					
649	185+71.00	X			12	2	Inlet, Type J-10	22			754.50	754.39	75		7	1	2	3.40											757.90					
650	185+75.60			X	12	2	Inlet, Type J-10	23			754.39	754.26	75		7	1	2	4.50											757.88	To be Lined				
651	186+74.00		X		24	2	Manhole C-4	202			746.40	745.59	75		7	1	2	294.99											757.39	To be Lined				
652	186+80.00	X			12	2	Catch Basin, Type W-8	24			750.10	749.98	75		7	1	2	6.71											757.25					
135	186+87.74		X		36	2	Manhole K-4	134			742.89	742.62	75		7	1	2	574.74			134								757.20					
653	187+14.60	X			12	2	Inlet, Type J-10	35			750.28	750.10	75		7	1	2	1.59											757.14					
654	188+75.75		X		24	2	Manhole C-4	34			745.59	745.45	75		7	1	2	22.24											756.23	To be Lined				
655	189+06.24			X	24	2	Mod. Manhole J-10	80			745.45	745.13	75		7	1	2	114.02											755.81					
656	189+86.30			X	24	2	Mod. Manhole J-10	282			745.13	744.01	75		7	1	2	613.23											755.33					
657	189+86.50	X			12	2	Inlet, Type J-10	28			752.06	751.92	75		7	1	2	4.99											755.46					
136	190+07.59		X		36	2	Manhole K-4	320			743.53	742.89	75		7	1	2	1088.72			320								755.41					
659	192+67.80	X			12	2	Inlet, Type J-10	28			750.40	749.74	75		7	1	2	5.17											753.75					
658	192+68.47			X	24	2	Mod. Manhole J-10	41			750.40	750.26	75		7	1	2	13.48											753.66					
137	192+91.95	X			36	2	Manhole K-4	284			744.10	743.53	75		7	1	2	731.82			284								753.67					
660	193+06.45		X				Manhole K-4				741.74		75		7	1	2	0.00											753.85					

REVISIONS		
DATE	REVISION	BY
08/11/22	Addendum No. 4	DEW



RECOMMENDED FOR APPROVAL		<i>Barbie Swihart Stutzman</i>		07/01/22	
		BARBIE SWIHART STUTZMAN		DATE	
DESIGNED: JRM		DRAWN: JRM			
CHECKED: BSS		CHECKED: BSS			

CITY OF HUNTINGTON	
LTCP PROJECTS 7 & 8: NORTHSIDE INTERCEPTOR SEWER	
STRUCTURE DATA TABLES	
SHEET 3 OF 4	

SCALE	
H: 1" = N/A - V: N/A	
CONSULTANT PROJECT NUMBER	
120-3003-02W	
SHEET	
T11	